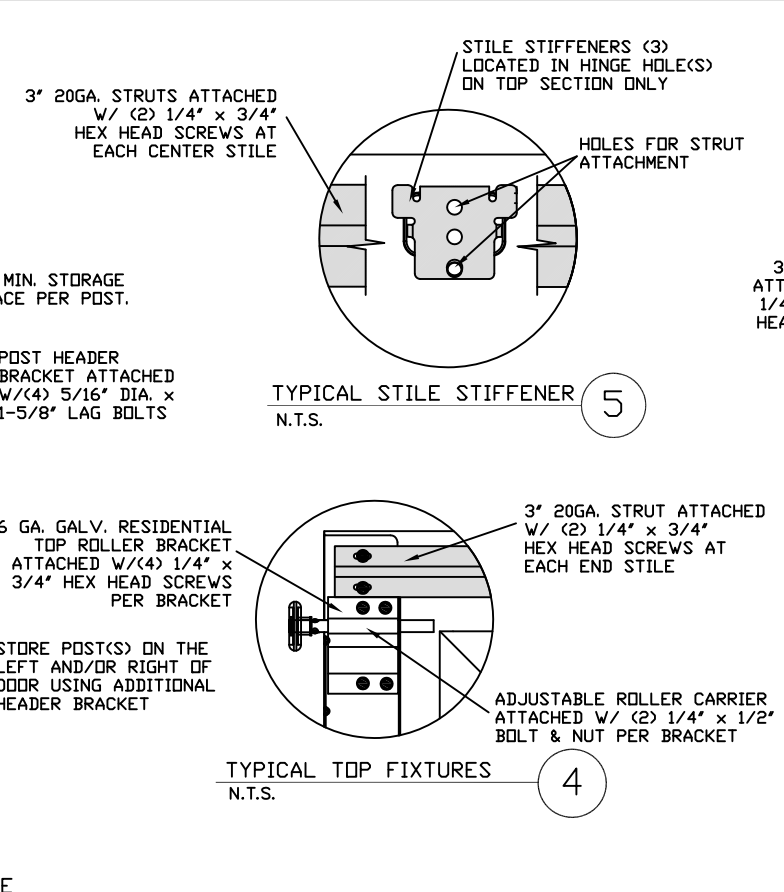
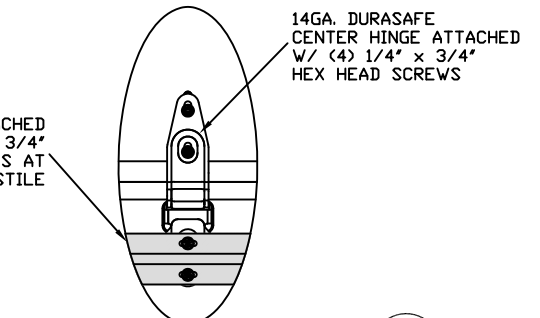


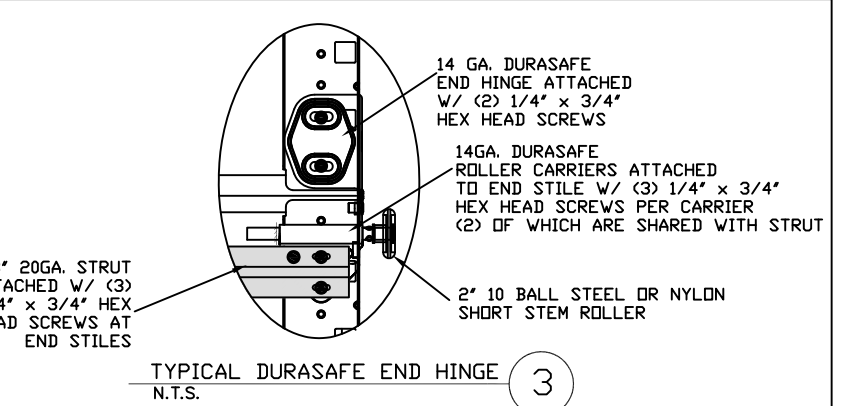
INSIDE ELEVATION
N.T.S.



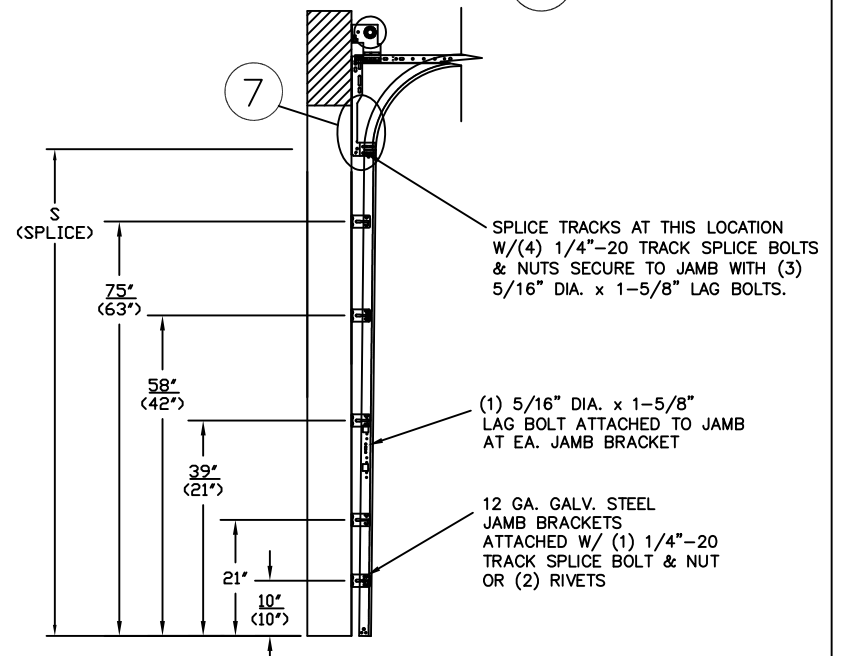
TYPICAL TOP FIXTURES
N.T.S.



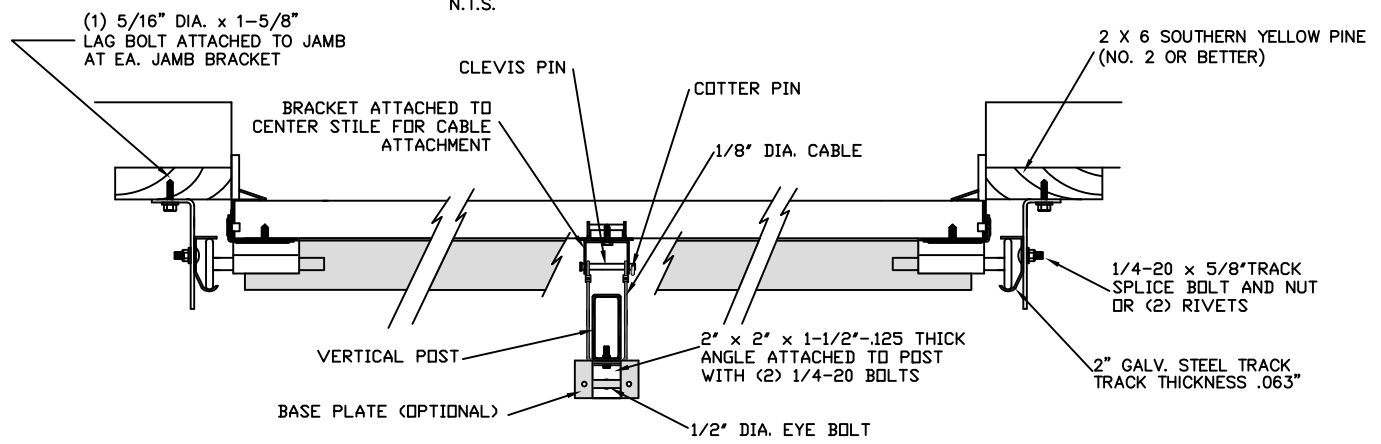
TYPICAL DURASAFE CENTER HINGE
N.T.S.



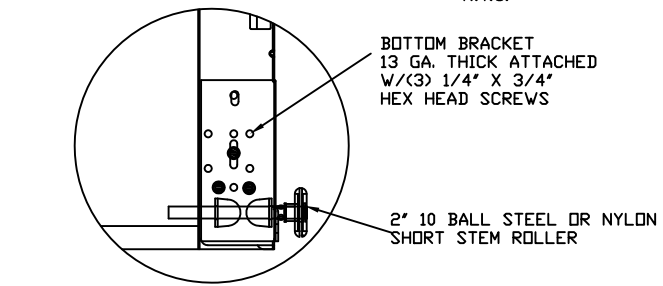
TYPICAL DURASAFE END HINGE
N.T.S.



TRACK CONFIGURATION FOR (7') AND 8' TALL DOORS
N.T.S.



TRACK MOUNTING DETAIL
N.T.S.



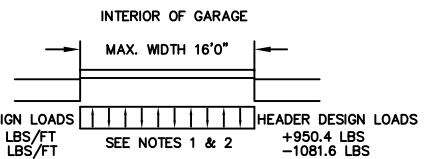
TYPICAL BOTTOM BRACKET
N.T.S.

THE METHOD OF TESTING WAS IN SUBSTANTIAL CONFORMANCE WITH THE PROCEDURE DESCRIBED IN ASTM E330 AND DASMA 108. THE PRESSURES SHOWN ON THE DRAWINGS WERE CALCULATED USING ASCE 7-98/02/05 WITH THE FOLLOWING PARAMETERS (5 FEET OF DOOR WIDTH IN THE END ZONE, ROOF AT ANY SLOPE, AND I=1.0):

WIND SPEED (MPH)	140	127	120	115	110
EXPOSURE LEVEL	B	C	C	D	D
MEAN ROOF HEIGHT	30'	15'	25'	15'	25'

SPECIFICATIONS AND NOTES

- THE HEADER RECEIVES MAXIMUM DESIGN LOADS OF: +950.4 LBS & -1081.6 LBS AT THE TOP OF EACH POST.
- EACH VERTICAL JAMBS RECEIVES MAXIMUM DESIGN LOADS OF: +118.8 LBS/FT & -135.2 LBS/FT
- DOORS AND HARDWARE WILL BE DESIGNED, MANUFACTURED AND INSTALLED WITH STANDARDS AS SET FORTH BY DASMA.
- DOOR SECTIONS SHALL BE 25 GA. MIN. (.019\") EXTERIOR, AND 27 GA. MIN. (.014\") INTERIOR ROLLED FORMED LIGHT COMMERCIAL QUALITY
- SUPPORTING STRUCTURAL ELEMENTS SHALL BE DESIGNED BY A REGISTERED PROFESSIONAL ENGINEER FOR WIND LOADS INDICATED ON THIS DRAWING IN ADDITION TO OTHER LOADINGS.



REV	DESCRIPTION OF REVISIONS	DATE	BY
B	REVISED NOTE 6	12.15.08	CBT
C	ADDED CABLE TO POST	11/07/11	DRC
D	VENTS, WIND SPEED TABLE, TRACK CONFIGURATIONS	4/26/12	RLR

MAX SIZE
16' x 8'

DESIGN LOADS
+29.7 PSF
-33.8 PSF

TEST LOADS
(1.5 x DESIGN LOADS)
+44.5 PSF
-50.6 PSF

Amarr
165 CARRIAGE COURT WINSTON-SALEM, N.C. 27105

MODEL #3000 CLASSICA

SIZE	DRAWN BY	BHG	DATE	03/13/06	DRAWING NUMBER	IRC-3316-140-45
B	CHECKED BY	DLJ	DATE	03/13/06		

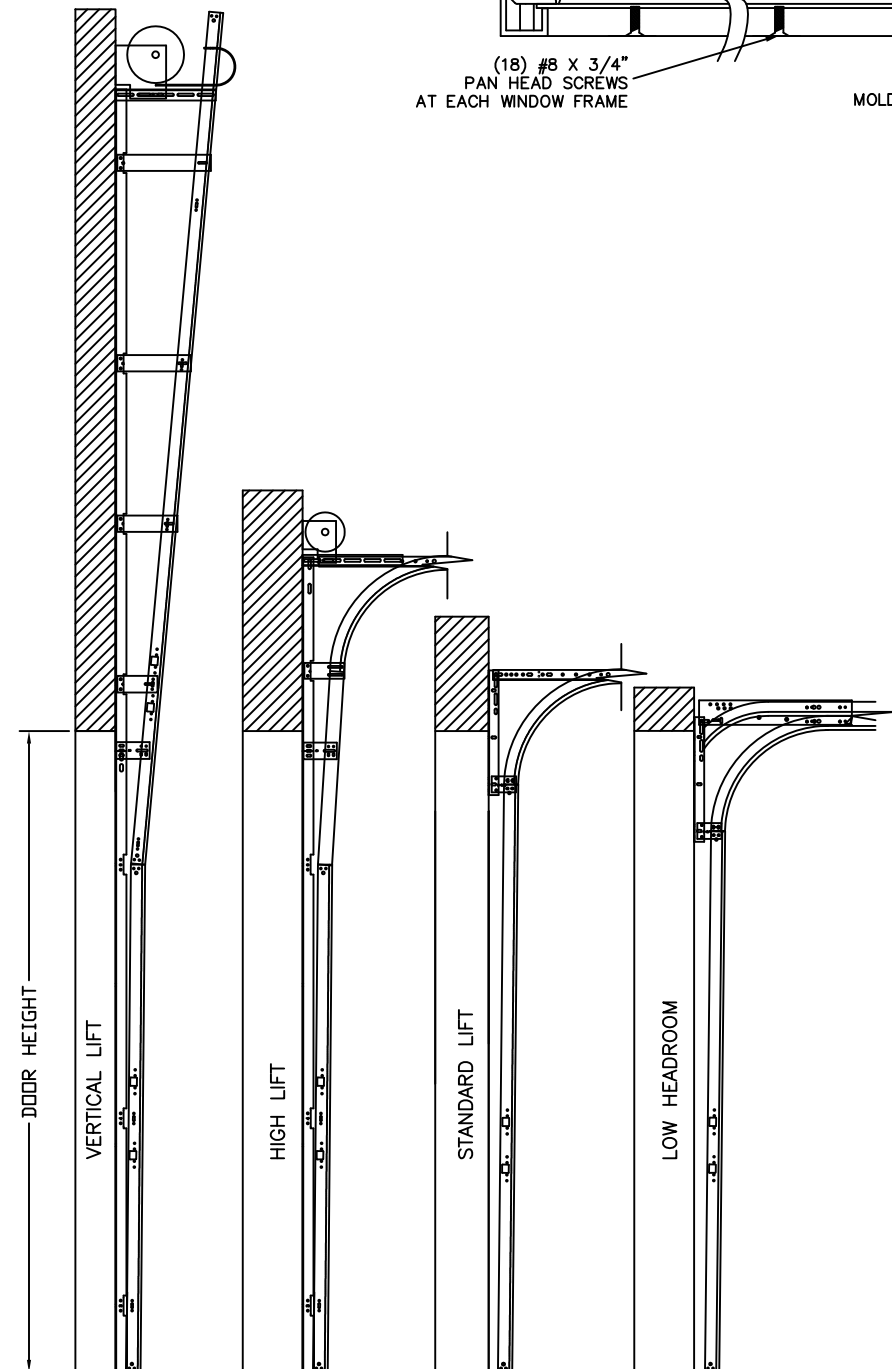
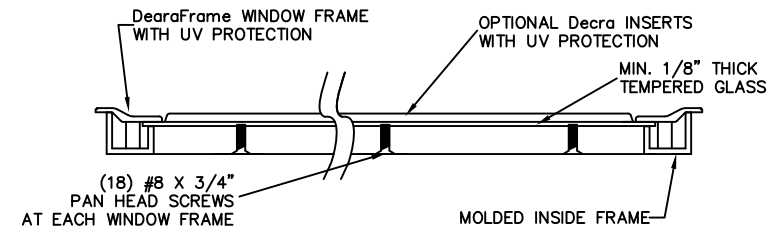
ENGINEER: THOMAS L. SHELMERDINE P.E. LIC. No. 0048579 SHEET 1 OF 3

WOOD JAMB & HEADER ATTACHMENT TO STRUCTURE

SEE NOTE 1

GLAZING OPTION CROSS SECTION

GLAZING NOT AVAILABLE IN WIND-BORNE DEBRIS REGION
GLAZING MEETS ASTM E1300-04.



AVAILABLE TRACK CONFIGURATIONS

N.T.S.

2 X 6 VERTICAL JAMB & HEADER ATTACHMENT TO WOOD FRAME STRUCTURE
5/16" X 3" LAG SCREWS STARTING 6" FROM ENDS THEN 24" O.C. (1 1/2" EMBEDMENT)

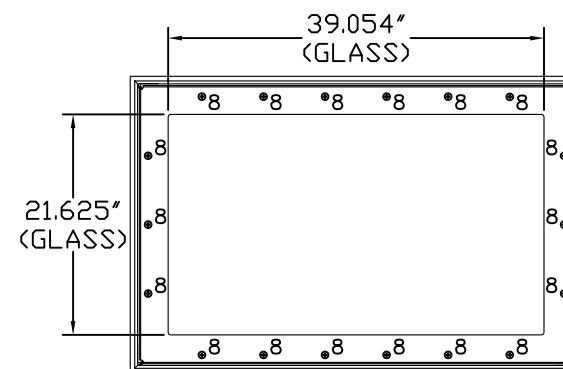
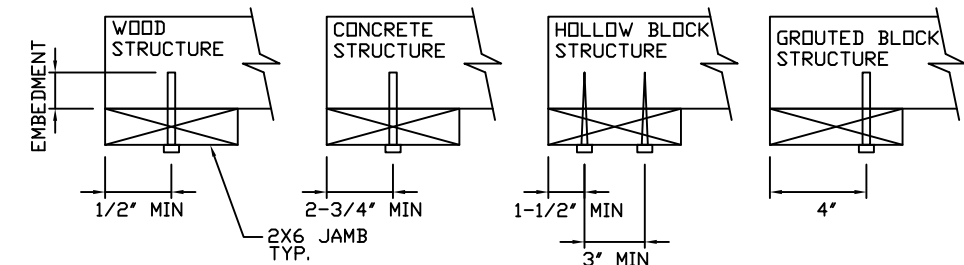
2 X 6 VERTICAL JAMB & HEADER ATTACHMENT TO 2,000 PSI CONCRETE
HILTI KWIK BOLT 3/8" X 4" STARTING 6" FROM ENDS THEN 24" O.C. (2 1/2" EMBEDMENT)
HILTI SLEEVE ANCHOR 3/8" X 2-3/4" STARTING 6" FROM ENDS THEN 24" O.C. (1 1/4" EMBEDMENT)
ITW/RAMSET REDHEAD (TRU-BOLT) 3/8" X 4" STARTING 6" FROM ENDS THEN 24" O.C. (2 1/2" EMBEDMENT)

2 X 6 VERTICAL JAMB & HEADER ATTACHMENT TO HOLLOW C-90 BLOCK *SEE NOTE 2*
SIMPSON 1/4" X 3" TITEN SCREWS STARTING 6" FROM ENDS, USE PAIRS OF FASTENERS (3" APART) AT 24" O.C. (1 1/2" EMBEDMENT)
HILTI 1/4" X 2-3/4" KWIK-CON II+ SCREWS STARTING 6" FROM ENDS, USE PAIRS OF FASTENERS (3" APART) AT 24" O.C. (1 1/4" EMBEDMENT)

2 X 6 VERTICAL JAMB & HEADER ATTACHMENT TO GROUTED C-90 BLOCK (2000 PSI GROUT)
HILTI SLEEVE ANCHOR 3/8" X 2-3/4" STARTING 6" FROM ENDS THEN 24" O.C. (1 1/4" EMBEDMENT)

NOTES

1. REFER TO DETAIL (6) FOR ADDITIONAL FASTENERS AT HEADER
2. OPTION NOT AVAILABLE FOR HEADER ATTACHMENT
3. LAGS AND BOLTS CAN BE COUNTERSUNK TO PROVIDE A FLUSH MOUNTING SURFACE
4. PREPARATION OF WOOD JAMBS BY OTHERS



GLAZING FASTENER DETAIL
N.T.S.

REV	DESCRIPTION OF REVISIONS	DATE	BY
B	REVISED NOTE 6	12.15.08	CBT
C	ADDED CABLE TO POST	11/07/11	DRC
D	VENTS, WIND SPEED TABLE, TRACK CONFIGURATIONS	4/26/12	RLR

MAX SIZE
16' x 8'

DESIGN LOADS
+29.7 PSF
-33.8 PSF

TEST LOADS
(1.5 x DESIGN LOADS)
+44.5 PSF
-50.6 PSF

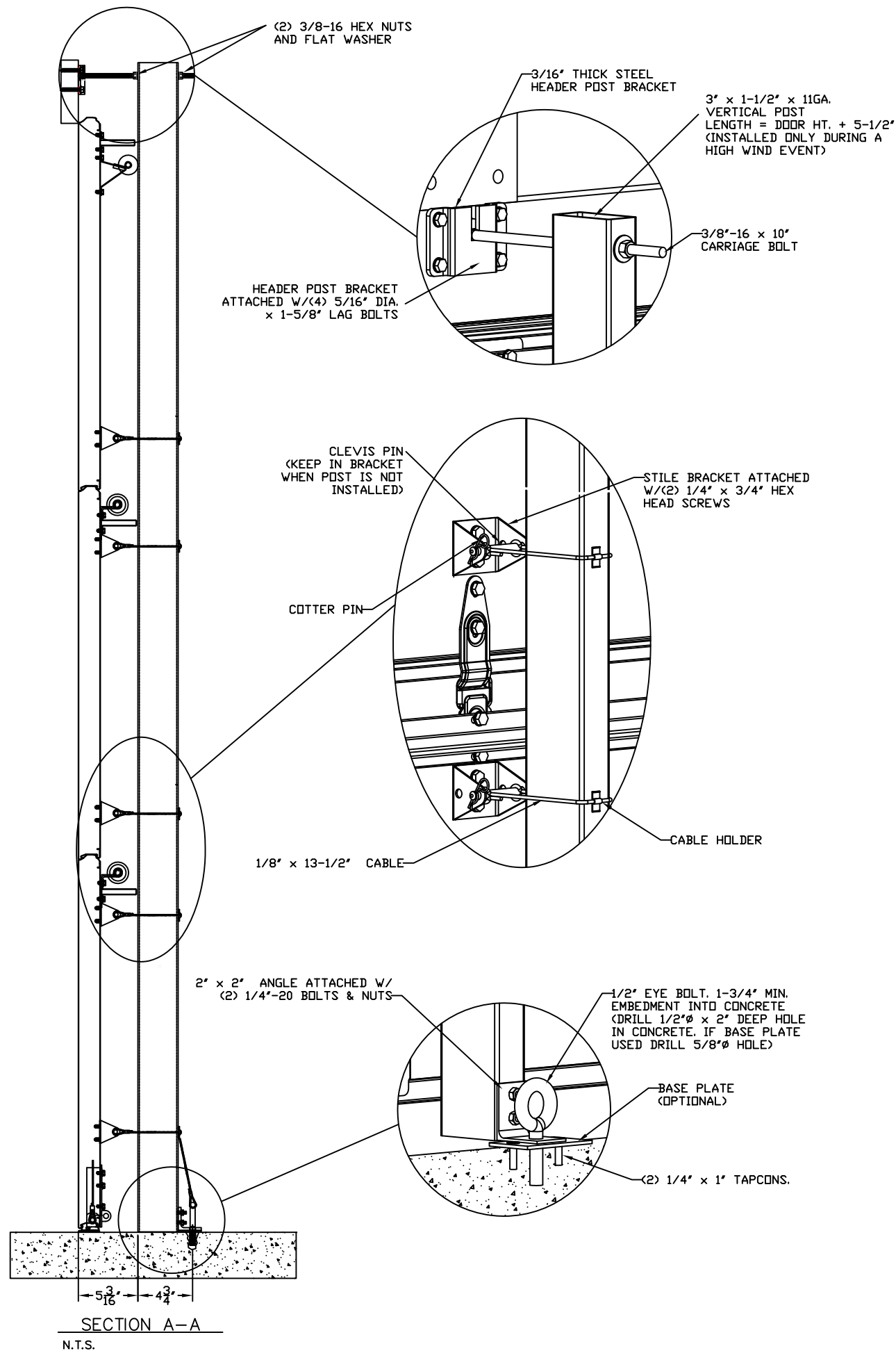


Amarr

165 CARRIAGE COURT WINSTON-SALEM, N.C. 27105

MODEL #3000 CLASSICA

SIZE	DRAWN BY	BHG	DATE	03/13/06	DRAWING NUMBER
B	CHECKED BY	DLJ	DATE	03/13/06	IRC-3316-140-45
ENGINEER: THOMAS L. SHELMERDINE P.E. LIC. No. 0048579					SHEET 2 OF 3



REV	DESCRIPTION OF REVISIONS	DATE	BY
B	REVISED NOTE 6	12.15.08	CBT
C	ADDED CABLE TO POST	11/07/11	DRC
D	VENTS, WIND SPEED TABLE, TRACK CONFIGURATIONS	4/26/12	RLR

MAX SIZE
16' x 8'

DESIGN LOADS
+29.7 PSF
-33.8 PSF

TEST LOADS
(1.5 x DESIGN LOADS)
+44.5 PSF
-50.6 PSF



Amarr

165 CARRIAGE COURT WINSTON-SALEM, N.C. 27105

MODEL #3000 CLASSICA

SIZE	DRAWN BY	BHG	DATE	03/13/06	DRAWING NUMBER
B	CHECKED BY	DLJ	DATE	03/13/06	IRC-3316-140-45
ENGINEER: THOMAS L. SHELMERDINE P.E. LIC. No. 0048579					SHEET 3 OF 3