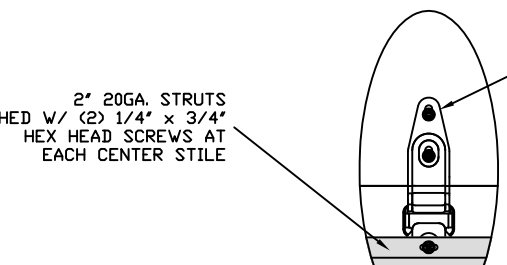
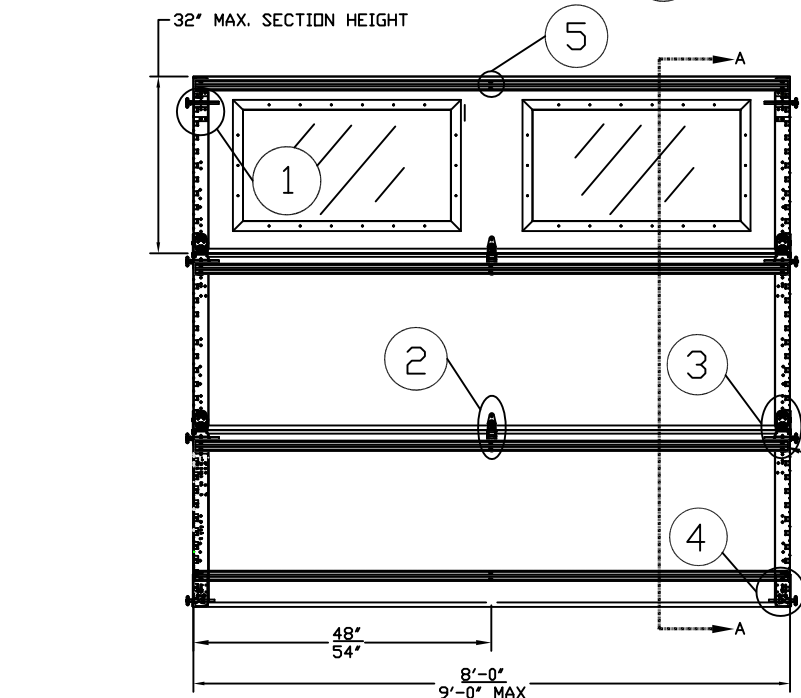


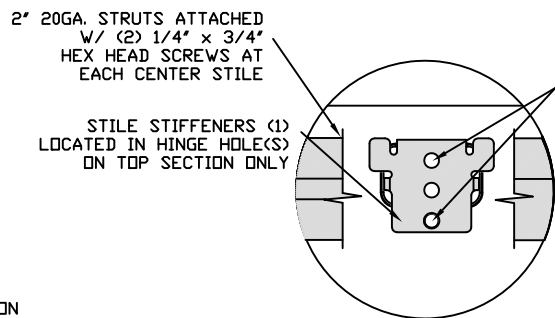
TYPICAL TOP FIXTURES  
N.T.S.



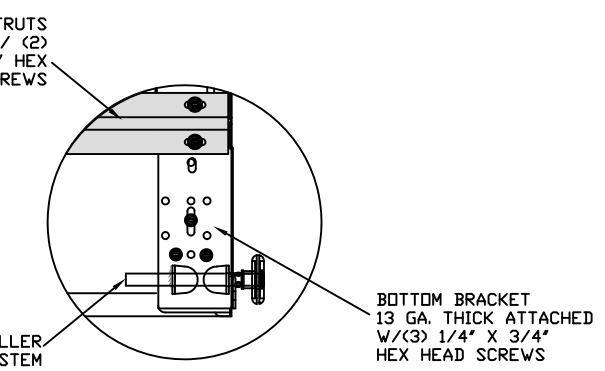
TYPICAL DURASAFE CENTER HINGE  
N.T.S.



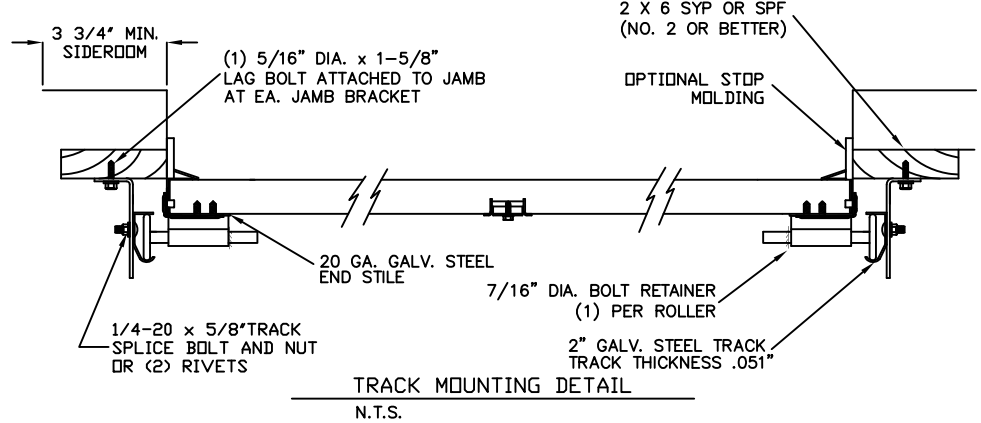
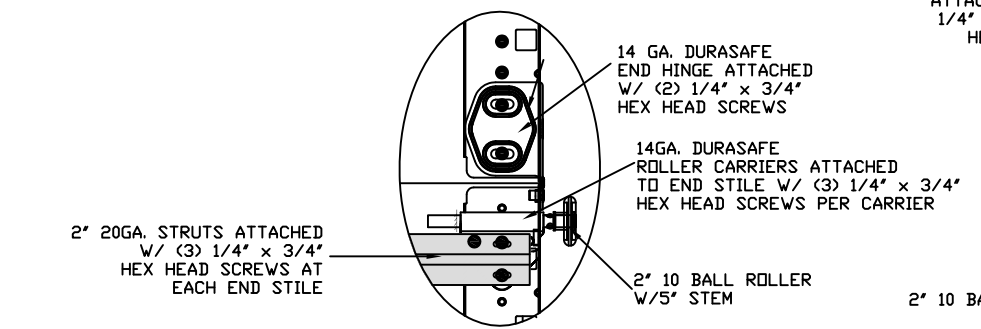
INSIDE ELEVATION  
N.T.S.



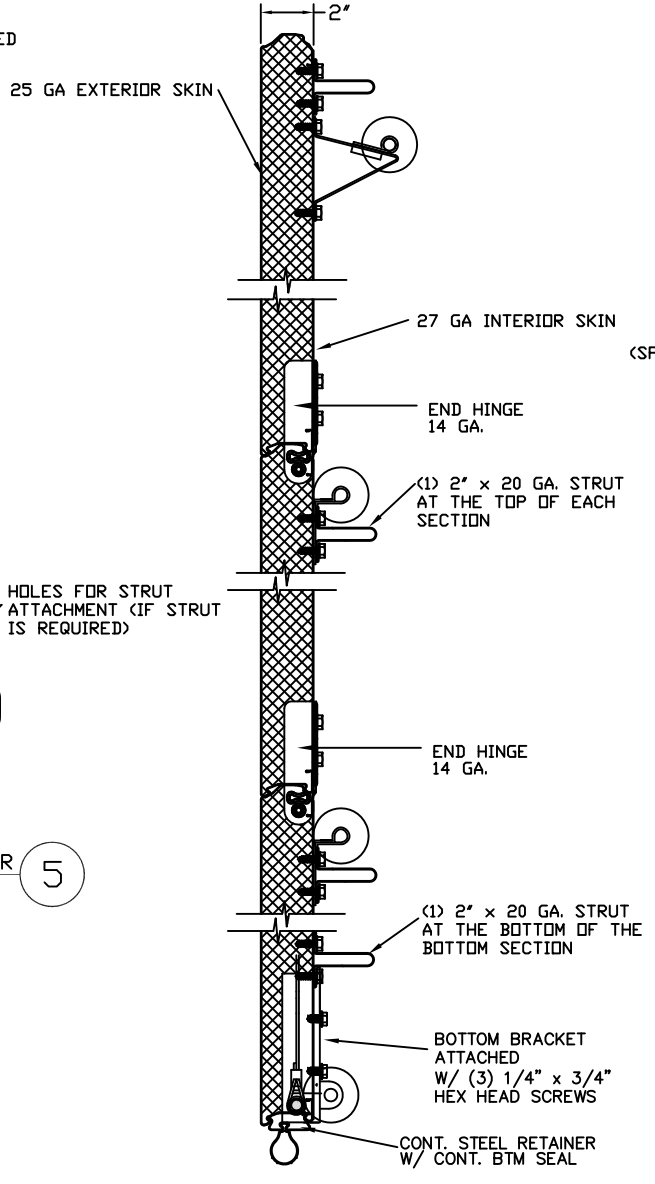
DURASAFE END HINGE  
N.T.S.



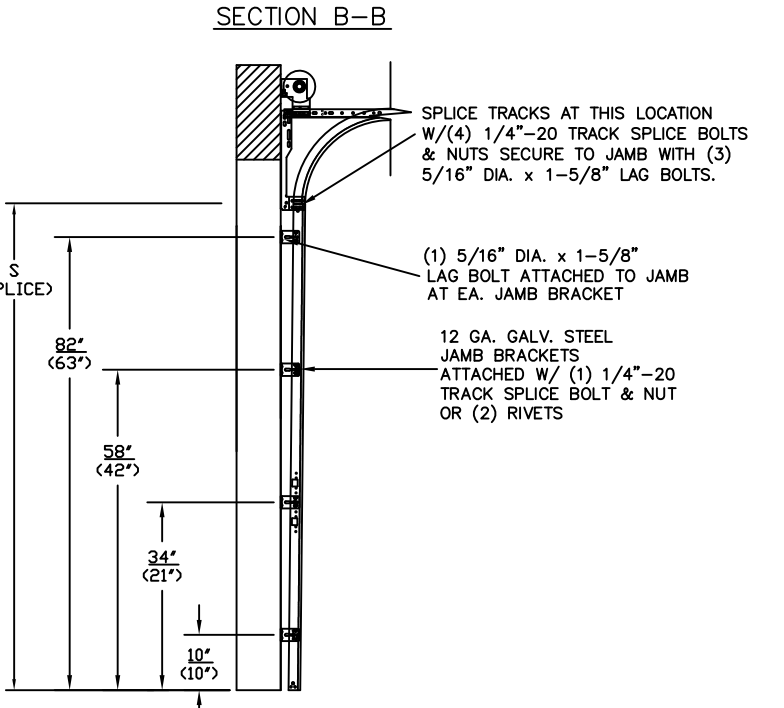
TYPICAL BOTTOM BRACKET  
N.T.S.



TRACK MOUNTING DETAIL  
N.T.S.

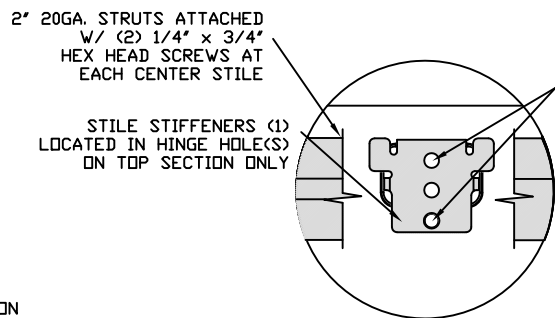


SECTION A-A (SIDE VIEW)  
N.T.S.



TRACK CONFIGURATION FOR (7') AND 8' TALL DOORS  
N.T.S.

ALL TRACK ATTACHMENTS +/- 2\"/>



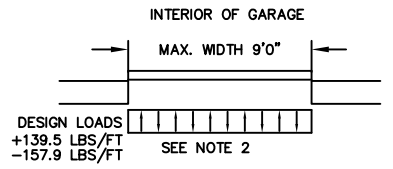
TYPICAL STILE STIFFENER  
N.T.S.

THE METHOD OF TESTING WAS IN SUBSTANTIAL CONFORMANCE WITH THE PROCEDURE DESCRIBED IN ASTM E330 AND DASMA 108. THE PRESSURES SHOWN ON THE DRAWINGS WERE CALCULATED USING ASCE 7-98/02/05 WITH THE FOLLOWING PARAMETERS (5 FEET OF DOOR WIDTH IN THE END ZONE, ROOF AT ANY SLOPE, AND I=1.0):

WIND SPEED (MPH)	137	124	118	113	108
EXPOSURE LEVEL	B	C	C	D	D
MEAN ROOF HEIGHT	30'	15'	25'	15'	25'

SPECIFICATIONS AND NOTES

- ALL THE LOAD FROM THE DOOR IS TRANSFERRED TO THE VERTICAL TRACK, FROM THE TRACK THE LOAD IS TRANSFERRED TO THE VERTICAL JAMBS. THE HORIZONTAL JAMB OR HEADER RECEIVES NO PORTION OF THE LOAD TRANSFERRED FROM THE DOOR.
- EACH VERTICAL JAMBS RECEIVES MAXIMUM DESIGN LOADS OF: +139.5 LBS/FT & -157.9 LBS/FT
- DOORS AND HARDWARE WILL BE DESIGNED, MANUFACTURED AND INSTALLED WITH STANDARDS AS SET FORTH BY DASMA.
- DOOR SECTIONS SHALL BE 25 GA. EXTERIOR MIN. (.019\"), AND 27 GA. INTERIOR MIN (.014) ROLLED FORMED LIGHT COMMERCIAL QUALITY
- SUPPORTING STRUCTURAL ELEMENTS SHALL BE DESIGNED BY A REGISTERED PROFESSIONAL ENGINEER FOR WIND LOADS INDICATED ON THIS DRAWING IN ADDITION TO OTHER LOADINGS.



REV	DESCRIPTION OF REVISIONS	DATE	BY
A	REVISED NOTE 6	12/15/08	CBT
B	VENTS, WIND SPEED TABLE, TRACK CONFIGURATIONS	4/25/12	RLR

MAX SIZE  
9' x 8'  
DESIGN LOADS  
+31.0 PSF  
-35.1 PSF  
TEST LOADS  
(1.5 x DESIGN LOADS)  
+46.5 PSF  
-52.6 PSF



**Amarr**

165 CARRIAGE COURT WINSTON-SALEM, N.C. 27105

**MODEL #3000 CLASSICA**

SIZE	DRAWN BY	BHG	DATE	02/02/06	DRAWING NUMBER
B	CHECKED BY	DLJ	DATE	02/02/06	IRC-3309-140-11

# WOOD JAMB ATTACHMENT TO STRUCTURE

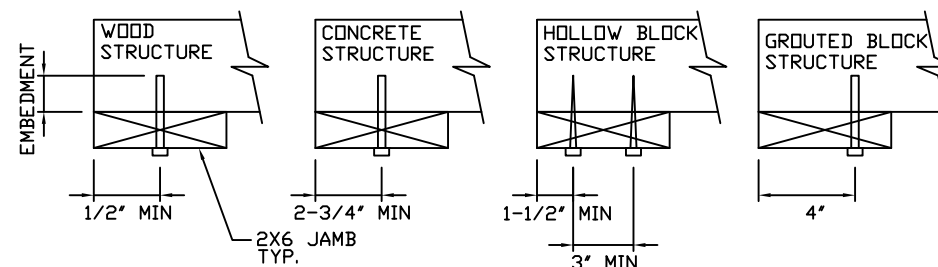
TABLE 1

Section Width (ft)	Max. Section Height (in)	Center Stile Location (Measured from Left Edge)	Max Design Loads Allowed	
			Positive (PSF)	Negative (PSF)
8' 0	28	48.000	39.6	44.9
9' 0	28	54.000	35.2	39.9
8' 0	32	48.000	34.7	39.2
9' 0	32	54.000	31.0	35.1

**2 X 6 VERTICAL JAMB ATTACHMENT TO WOOD FRAME STRUCTURE**  
 5/16" X 3" LAG SCREWS STARTING 6" FROM ENDS THEN 24" O.C. (1 1/2" EMBEDMENT)  
**2 X 6 VERTICAL JAMB ATTACHMENT TO 2,000 PSI CONCRETE**  
 HILTI KWIK BOLT 3/8" X 4" STARTING 6" FROM ENDS THEN 24" O.C. (2 1/2" EMBEDMENT)  
 HILTI SLEEVE ANCHOR 3/8" X 2-3/4" STARTING 6" FROM ENDS THEN 24" O.C. (1 1/4" EMBEDMENT)  
 ITW/RAMSET REDHEAD (TRU-BOLT) 3/8" X 4" STARTING 6" FROM ENDS THEN 24" O.C. (2 1/2" EMBEDMENT)  
**2 X 6 VERTICAL JAMB ATTACHMENT TO HOLLOW C-90 BLOCK**  
 SIMPSON 1/4" X 3" TITEN SCREWS STARTING 6" FROM ENDS, USE PAIRS OF FASTENERS (3" APART) AT 24" O.C. (1 1/2" EMBEDMENT)  
 HILTI 1/4" X 2-3/4" KWIK-CON II+ SCREWS STARTING 6" FROM ENDS, USE PAIRS OF FASTENERS (3" APART) AT 24" O.C. (1 1/4" EMBEDMENT)

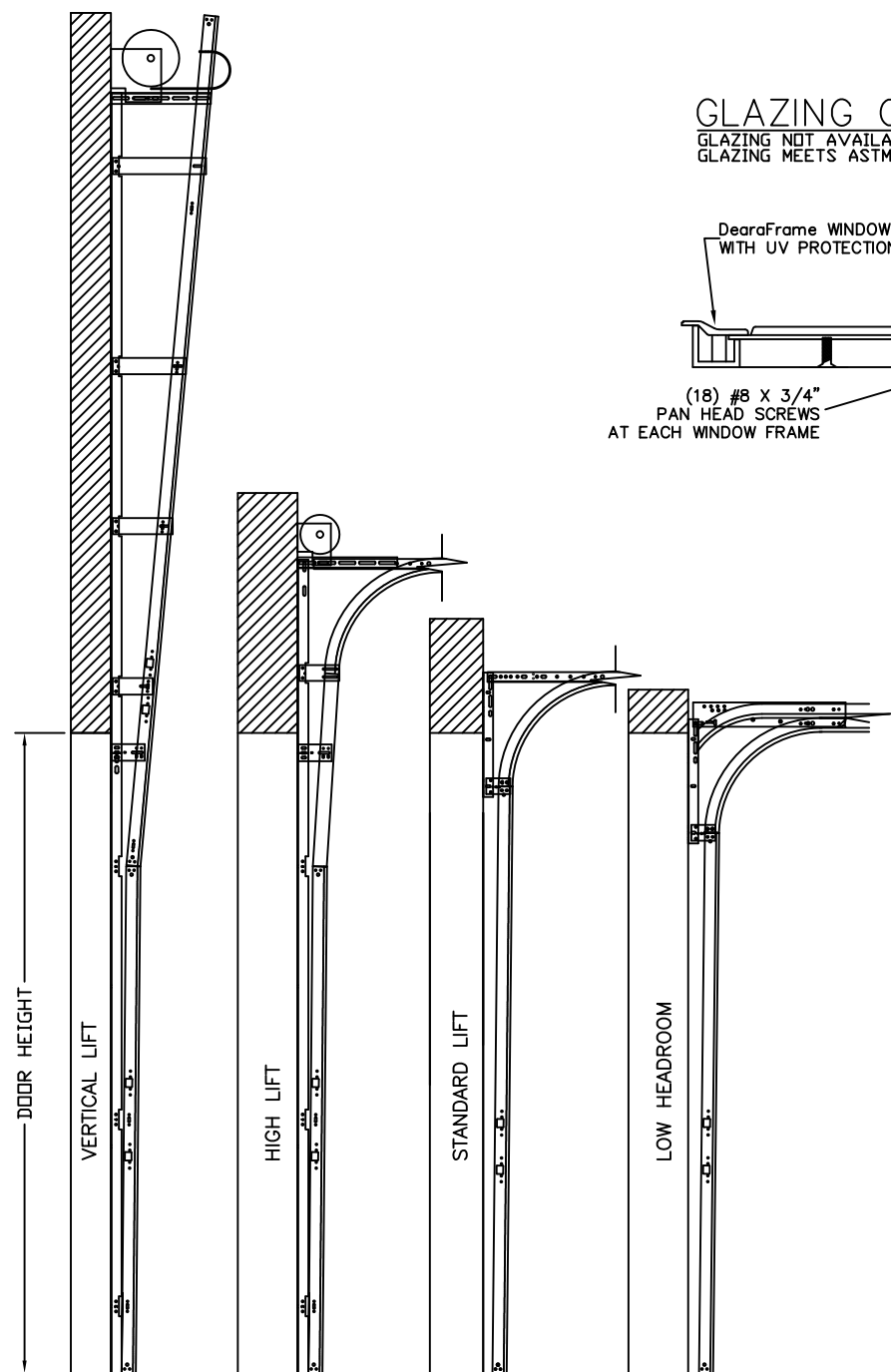
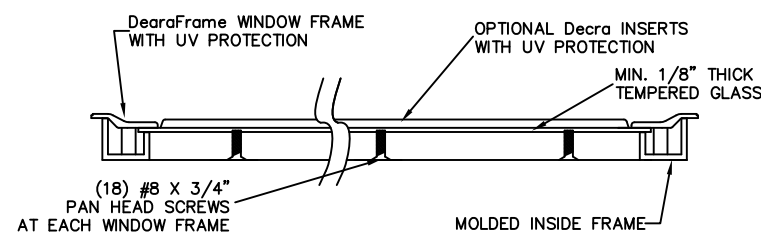
**2 X 6 VERTICAL JAMB ATTACHMENT TO GROUTED C-90 BLOCK (2000 PSI GROUT)**  
 HILTI SLEEVE ANCHOR 3/8" X 2-3/4" STARTING 6" FROM ENDS THEN 24" O.C. (1 1/4" EMBEDMENT) (OR, USE FASTENERS FOR HOLLOW C-90 BLOCK)

\*LAGS AND BOLTS CAN BE COUNTERSUNK TO PROVIDE A FLUSH MOUNTING SURFACE.  
 \*PREPARATION OF WOOD JAMBS BY OTHERS

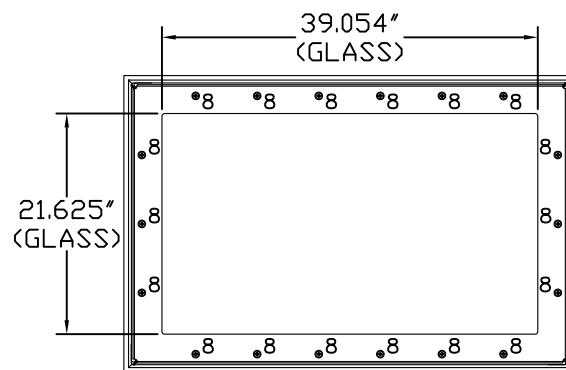


## GLAZING OPTION CROSS SECTION

GLAZING NOT AVAILABLE IN WIND-BORNE DEBRIS REGION  
 GLAZING MEETS ASTM E1300-04.



AVAILABLE TRACK CONFIGURATIONS  
 N.T.S.



GLAZING FASTENER DETAIL  
 N.T.S.

REV	DESCRIPTION OF REVISIONS	DATE	BY
A	REVISED NOTE 6	12/15/08	CBT
B	VENTS, WIND SPEED TABLE, TRACK CONFIGURATIONS	4/25/12	RLR

MAX SIZE  
 9' x 8'  
 DESIGN LOADS  
 +31.0 PSF  
 -35.1 PSF  
 TEST LOADS  
 (1.5 x DESIGN LOADS)  
 +46.5 PSF  
 -52.6 PSF



**Amarr**

165 CARRIAGE COURT WINSTON-SALEM, N.C. 27105

## MODEL #3000 CLASSICA

SIZE	DRAWN BY	BHG	DATE	02/02/06	DRAWING NUMBER
B	CHECKED BY	DLJ	DATE	02/02/06	IRC-3309-140-11

ENGINEER: THOMAS L. SHELMERDINE P.E. LIC. No. 0048579 SHEET 2 OF 2