

THE METHOD OF TESTING WAS IN SUBSTANTIAL CONFORMANCE WITH THE PROCEDURES DESCRIBED IN ANSI/DASMA 108. THE PRESSURES SHOWN ON THE DRAWINGS WERE CALCULATED USING ASCE 7-98/02/05 WITH THE FOLLOWING PARAMETERS (5 FEET OF DOOR WIDTH IN END ZONE, ROOF SLOPE 10° OR LESS, I=1.0):

WIND SPEED (MPH)	126	114	109	104	99
EXPOSURE LEVEL	B	C	C	D	D
MEAN ROOF HEIGHT	30'	15'	25'	15'	25'

REV	DESCRIPTION OF REVISIONS	DATE	BY

MAX SIZE  
18'2" x 24'

DESIGN LOADS  
+21.6 PSF  
-24.5 PSF

TEST LOADS  
+32.4 PSF  
-36.8 PSF

Thomas L. Shelmerdine, PE (TX PE #85829)  
Structural Solutions, PA (TX Firm #F-004065)

TX

5921-G W. Friendly Ave., Greensboro, NC 27410

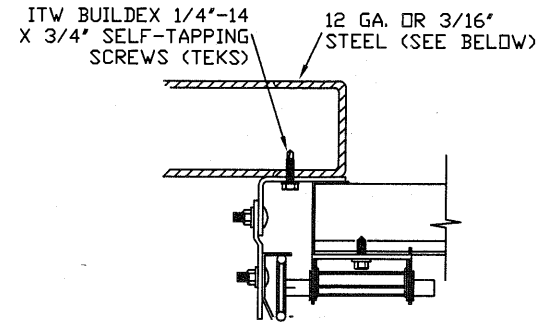
165 CARRIAGE COURT WINSTON-SALEM, NC. 27105 WWW.AMARR.COM

MODEL 2700 (27 GA)  
MODEL 2720 (20 GA)

SIZE	DRAWN BY	RLR	DATE	07/18/13	DRAWING NUMBER
B	CHECKED BY		DATE		IBC-2718-120-15

SHEET 1 OF 3

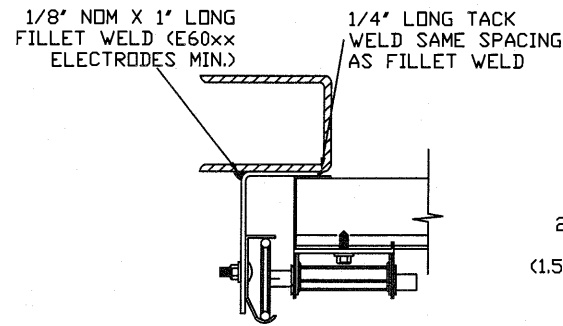
## TRACK CONNECTION DIRECTLY TO STRUCTURE OPTIONS



CLIP STYLE REVERSE ANGLE MOUNT SHOWN  
BRACKET, CONTINUOUS AND TAPERED ANGLE  
MOUNT AVAILABLE

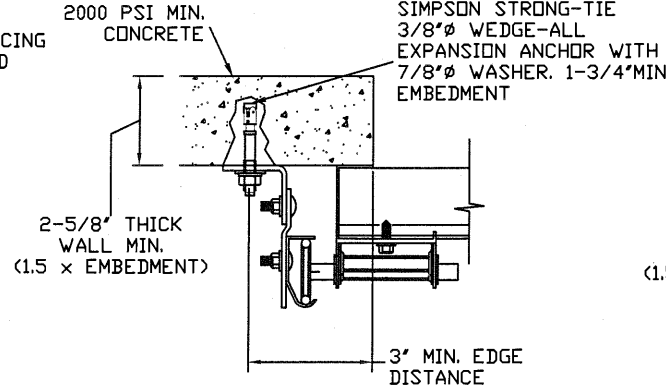
**12 GA. STEEL FRAMING**  
232 LBS./SCREW ALLOWABLE LOAD - 3'  
FROM ENDS AND 12" O.C.  
REFER TO NOTES: 1, 2 AND 5

**3/16" STEEL FRAMING**  
569 LBS./SCREW ALLOWABLE LOAD - 6'  
FROM ENDS AND 24" O.C.  
REFER TO NOTES: 1, 2 AND 5



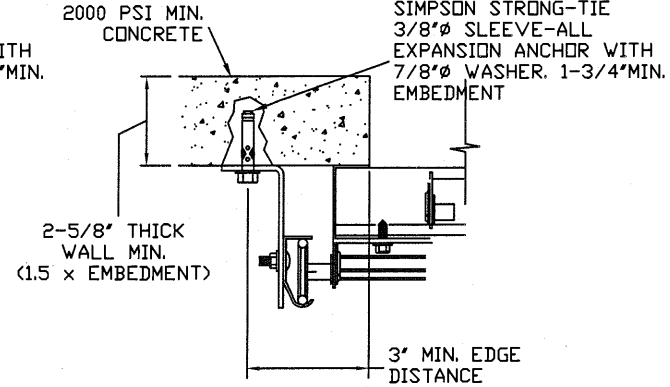
REVERSE ANGLE MOUNT SHOWN  
BRACKET, CONTINUOUS AND  
TAPERED ANGLE MOUNT AVAILABLE

**STEEL FRAMING 12GA OR BETTER**  
1590 LBS./IN. ALLOWABLE LOAD -  
6" FROM ENDS AND 24" O.C.  
REFER TO NOTES: 1, 2, 5, 6, 7, 8  
AND 9



CLIP STYLE CONTINUOUS ANGLE MOUNT SHOWN  
BRACKET, REVERSE AND TAPERED ANGLE MOUNT  
AVAILABLE

**2000 PSI CONCRETE OR GREATER**  
351 LBS./EXPANSION ANCHOR ALLOWABLE LOAD -  
6" FROM ENDS AND 18" O.C.  
REFER TO NOTES: 1, 2, 3, 4 AND 5

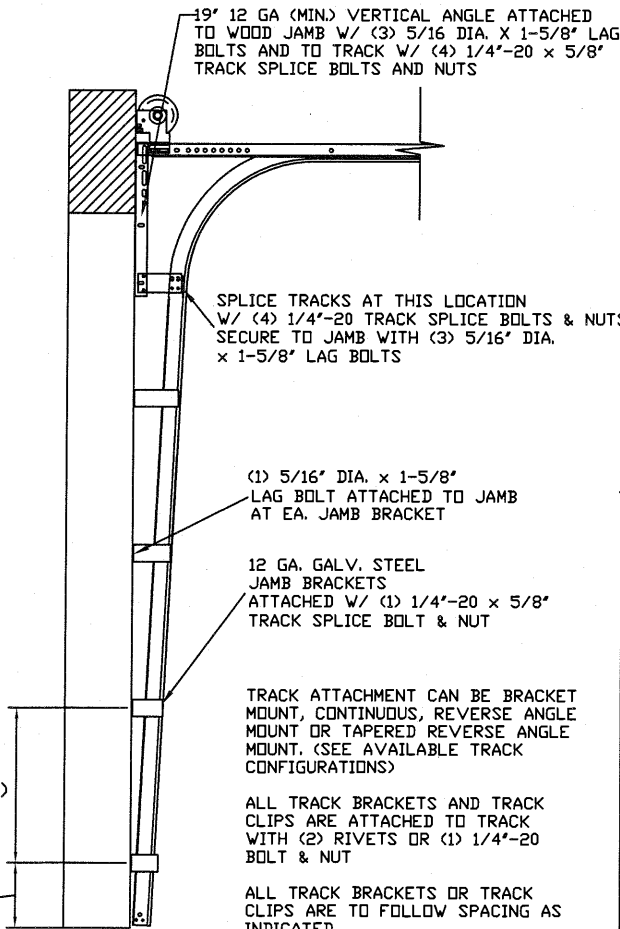


CONTINUOUS ANGLE MOUNT SHOWN  
BRACKET, CONTINUOUS AND TAPERED ANGLE  
MOUNT AVAILABLE

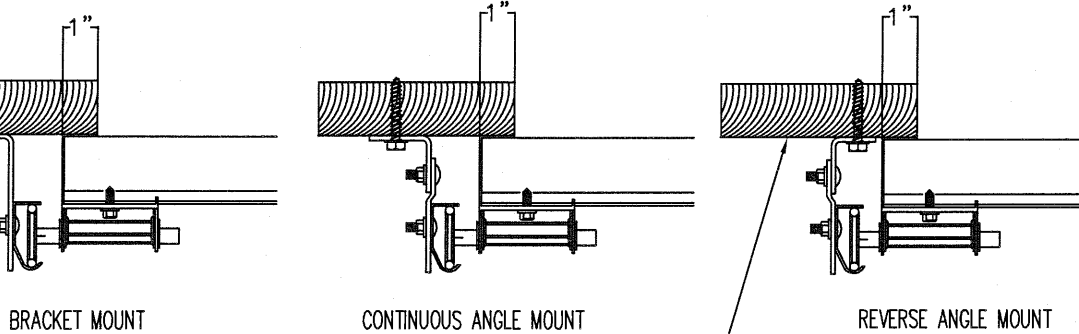
**2000 PSI CONCRETE OR GREATER**  
336 LBS./EXPANSION ANCHOR ALLOWABLE  
LOAD - 6" FROM ENDS AND 18" O.C.  
REFER TO NOTES: 1, 2, 3, 4 AND 5

## TRACK CONNECTION TO WOOD JAMB OPTIONS

FOR LAG SCREWS & BRACKET SPACING SEE TABLE 1



5/16" x 1 5/8"  
LAG SCREW (1)  
PER JAMB BRACKET  
(1-1/2" EMBEDMENT  
MINIMUM) (TYP.)



2x6 WOOD JAMB SYP  
(NO.2) OR BETTER (TYP.)

TABLE 1

DOOR HEIGHT	TRACK ATTACHMENT											SPLICE S
	A	B	C	D	E	F	G	H	I	J	K	
7'	10"	34"	58"									76"
8'	10"	34"	58"									88"
9'	10"	34"	58"	82"								100"
10'	10"	34"	58"	82"								112"
11'	10"	34"	58"	82"	106"							124"
12'	10"	34"	58"	82"	106"							136"
13'	10"	34"	58"	82"	106"	130"						148"
14'	10"	34"	58"	82"	106"	130"						160"
15'	10"	34"	58"	82"	106"	130"	154"					172"
16'	10"	34"	58"	82"	106"	130"	154"					184"
17'	10"	34"	58"	82"	106"	130"	154"	178"				196"
18'	10"	34"	58"	82"	106"	130"	154"	178"				208"
19'	10"	34"	58"	82"	106"	130"	154"	178"	202"			220"
20'	10"	34"	58"	82"	106"	130"	154"	178"	202"			232"
21'	10"	34"	58"	82"	106"	130"	154"	178"	202"	226"		244"
22'	10"	34"	58"	82"	106"	130"	154"	178"	202"	226"		256"
23'	10"	34"	58"	82"	106"	130"	154"	178"	202"	226"	250"	268"
24'	10"	34"	58"	82"	106"	130"	154"	178"	202"	226"	250"	280"

**NOTES:**

- ANCHORS TO BE EVENLY SPACED BETWEEN THE HEADER AND FLOOR.
- FIRST (BOTTOM) ANCHOR STARTING AT NO MORE THAN HALF OF THE MAXIMUM ON-CENTER DISTANCE. HIGHEST ANCHOR INSTALLED AT LEAST AS HIGH AS THE DOOR OPENING.
- MIN. EDGE DISTANCE OF 3" REQUIRED.
- USE WASHERS PROVIDED BY THE ANCHOR MANUFACTURER.
- SUPPORTING STRUCTURAL ELEMENTS SHALL BE DESIGNED BY A REGISTERED PROFESSIONAL ENGINEER FOR WIND LOADS IN ADDITION TO OTHER LOADS.
- MOST GARAGE DOOR TRACK IS GALVANIZED STEEL. USE ALL NECESSARY PRECAUTIONS WHEN WELDING GALVANIZED STEEL.
- ALL WELDS SHOULD BE PERFORMED BY A CERTIFIED WELDER OR INSPECTED BY A CERTIFIED WELDING INSPECTOR TO VERIFY THE INTEGRITY OF THE WELD.
- FILLET WELDS TO HAVE A STRAIGHT OR CONVEX FACE SURFACE.
- TACK WELD TOE OF ANGLE AT SAME SPACING TO PREVENT ROTATION OF TRACK ANGLE.

TRACK CONFIGURATION FOR 6' UP TO 24' TALL DOORS  
\*SPLICE LOCATION FOR STANDARD LIFT. WILL VARY FOR  
OTHER LIFT APPLICATIONS. ALL TRACK ATTACHMENT  
LOCATIONS MAY ALLOW +/-2" WHEN USING SYP NO.2  
GRADE LUMBER OR BETTER ONLY.

REV	DESCRIPTION OF REVISIONS	DATE	BY

MAX SIZE  
18'2" x 24'

DESIGN LOADS  
+21.6 PSF  
-24.5 PSF

TEST LOADS  
+32.4 PSF  
-36.8 PSF

Thomas L. Shelmerdine, PE (TX PE #85829)  
Structural Solutions, PA (TX Firm #004063)

TX

5921-G W. Friendly Ave., Greensboro, NC 27410

165 CARRIAGE COURT WINSTON-SALEM, NC. 27105 WWW.AMARR.COM

**MODEL 2700 (27 GA)**  
**MODEL 2720 (20 GA)**

SIZE	DRAWN BY	RLR	DATE	07/18/13	DRAWING NUMBER
B	CHECKED BY		DATE		IBC-2718-120-15

SHEET 2 OF 3

# WOOD JAMB ATTACHMENT TO STRUCTURE (OPTIONAL)

**2 X 6 VERTICAL JAMB ATTACHMENT TO WOOD FRAME STRUCTURE**  
 5/16" X 3" LAG SCREWS STARTING 6" FROM ENDS THEN 24" O.C. (1 1/2" EMBEDMENT)

**2 X 6 VERTICAL JAMB ATTACHMENT TO 2,000 PSI CONCRETE**  
 HILTI KWIK BOLT 3/8" X 4" STARTING 6" FROM ENDS THEN 24" O.C. (2 1/2" EMBEDMENT)  
 HILTI SLEEVE ANCHOR 3/8" X 2-3/4" STARTING 6" FROM ENDS THEN 22" O.C. (1 1/4" EMBEDMENT)  
 ITW/RAMSET REDHEAD (TRU-BOLT) 3/8" X 4" STARTING 6" FROM ENDS THEN 24" O.C. (2 1/2" EMBEDMENT)

**2 X 6 VERTICAL JAMB ATTACHMENT TO HOLLOW C-90 BLOCK**  
 SIMPSON 1/4" X 3" TITEN SCREWS STARTING 6" FROM ENDS, USE PAIRS OF FASTENERS  
 (3" APART) AT 16" O.C. (1 1/2" EMBEDMENT)  
 HILTI 1/4" X 2-3/4" KWIK-CON II+ SCREWS STARTING 6" FROM ENDS, USE PAIRS OF FASTENERS  
 (3" APART) AT 16" O.C. (1 1/4" EMBEDMENT)

**2 X 6 VERTICAL JAMB ATTACHMENT TO GROUTED C-90 BLOCK (2000 PSI GROUT)**  
 HILTI SLEEVE ANCHOR 3/8" X 2-3/4" STARTING 6" FROM ENDS THEN 24" O.C. (1 1/4" EMBEDMENT)  
 (OR, USE FASTENERS FOR HOLLOW C-90 BLOCK)

\*LAGS AND BOLTS CAN BE COUNTERSUNK TO PROVIDE A FLUSH MOUNTING SURFACE.  
 \*PREPARATION OF WOOD JAMBS BY OTHERS

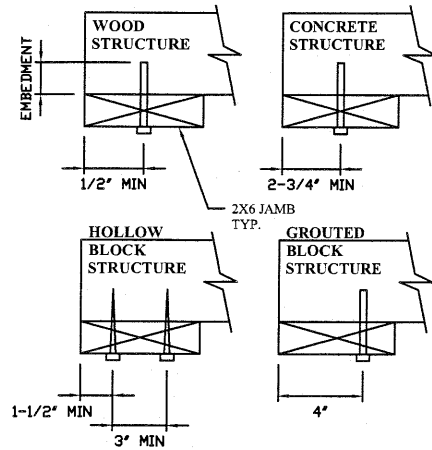
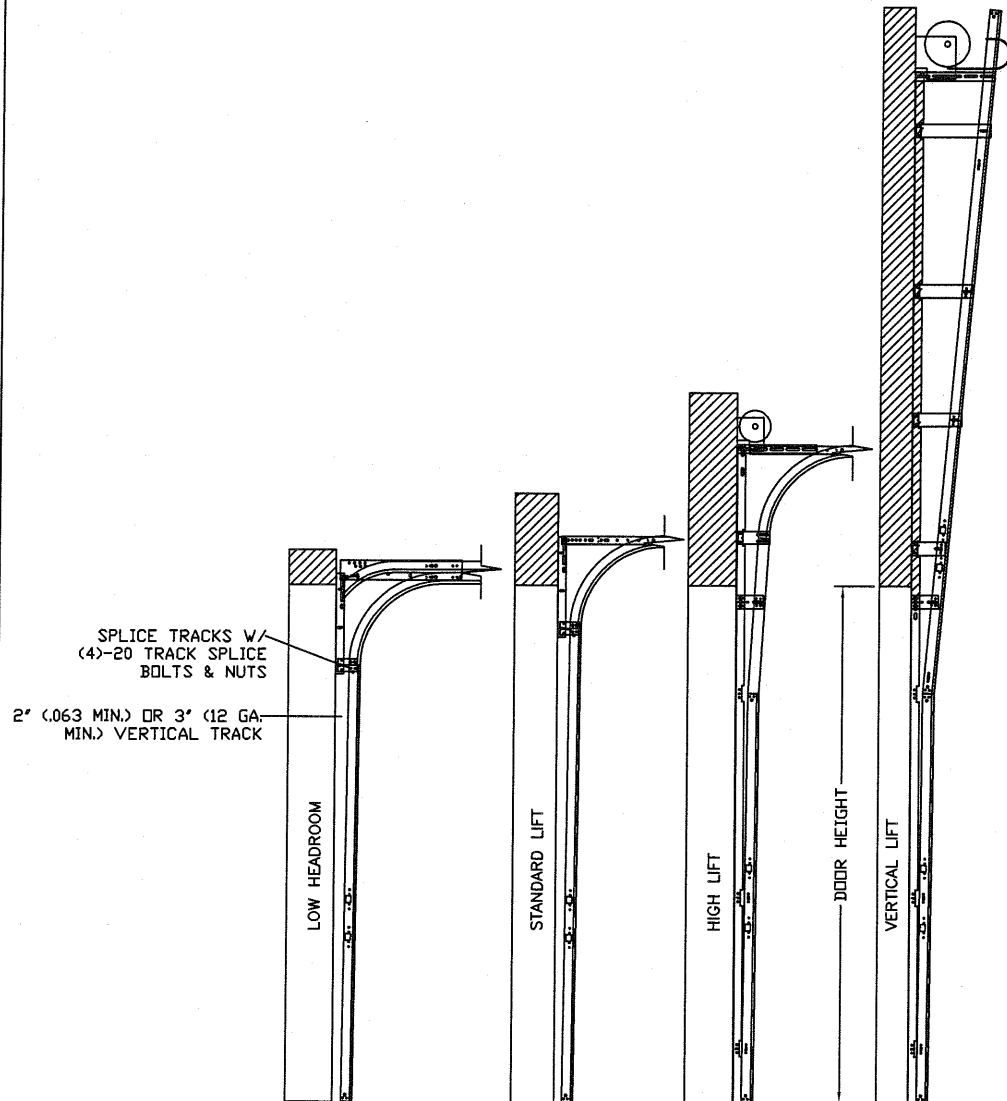


TABLE 2

Section Width		Center Stile Locations (Measured from Left Edge)				Max Design Loads Allowed	
(ft)	(in)	1st (in)	2nd (in)	3rd (in)	4th (in)	Positive (PSF)	Negative (PSF)
17'	0	39	81	123	165	22.5	25.5
17'	2	40	82	124	166	22.5	25.5
17'	4	41	83	125	167	22.5	25.5
17'	6	42	84	126	168	22.4	25.4
17'	8	43	85	127	169	22.2	25.1
17'	10	44	86	128	170	21.9	24.9
18'	0	43.5	86.5	129.5	172.5	21.8	24.7
18'	2	44.5	87.5	130.5	173.5	21.6	24.5

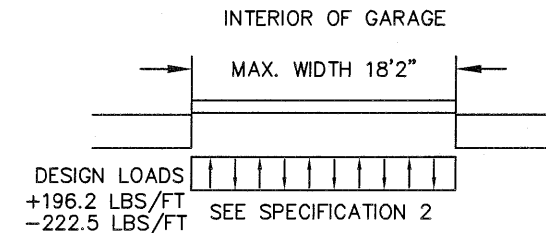
FOR DOOR SIZES LESS THAN 17'0 CONTACT ENGINEERING



AVAILABLE TRACK CONFIGURATIONS  
 N.T.S.

### SPECIFICATIONS

1. ALL THE LOAD FROM THE DOOR IS TRANSFERRED TO THE VERTICAL TRACK, FROM THE TRACK THE LOAD IS TRANSFERRED TO THE VERTICAL JAMBS. THE HORIZONTAL JAMB OR HEADER RECEIVES NO PORTION OF THE LOAD TRANSFERRED FROM THE DOOR
2. EACH VERTICAL JAMBS RECEIVES MAXIMUM DESIGN LOADS OF:  
 +196.2 LBS/FT & -222.5 LBS/FT
3. DOOR AND HARDWARE WILL BE DESIGNED, MANUFACTURED AND INSTALLED WITH STANDARDS AS SET FORTH BY DASMA.
4. DOOR SECTIONS SHALL BE 27 GA. (.0151) MIN. EXTERIOR SKIN ROLLFORMED, W/BAKED ON POLYESTER FINISH
5. DOORS UP TO 24'0" HIGH USE (2) 3' STRUTS PER INTERMEDIATE AND TOP SECTION AND (3) ON THE BOTTOM SECTION
6. SUPPORTING STRUCTURAL ELEMENTS SHALL BE DESIGNED BY A REGISTERED PROFESSIONAL ENGINEER FOR WIND LOADS INDICATED ON THIS DRAWING IN ADDITION TO OTHER LOADINGS.



REV	DESCRIPTION OF REVISIONS	DATE	BY

MAX SIZE  
18'2" x 24'

DESIGN LOADS  
+21.6 PSF  
-24.5 PSF

TEST LOADS  
+32.4 PSF  
-36.8 PSF

Thomas L. Shelmerdine, PE (TX PE #85829)  
 Structural Solutions, PA (TX Firm #F-004063)

STATE OF TEXAS  
 THOMAS L. SHELMERDINE  
 85829  
 LICENSED PROFESSIONAL ENGINEER  
 TX

5921-G W. Friendly Ave., Greensboro, NC 27410

**Amarr**

165 CARRIAGE COURT WINSTON-SALEM, N.C. 27105 WWW.AMARR.COM

MODEL 2700 (27 GA)  
 MODEL 2720 (20 GA)

SIZE	DRAWN BY	RLR	DATE	07/18/13	DRAWING NUMBER
B	CHECKED BY		DATE		IBC-2718-120-15

SHEET 3 OF 3