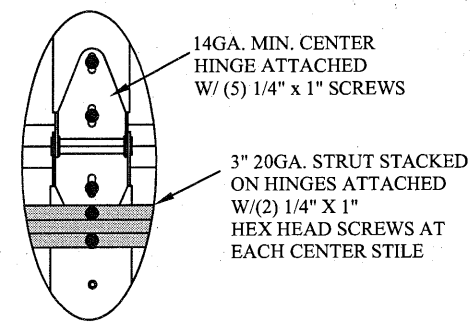
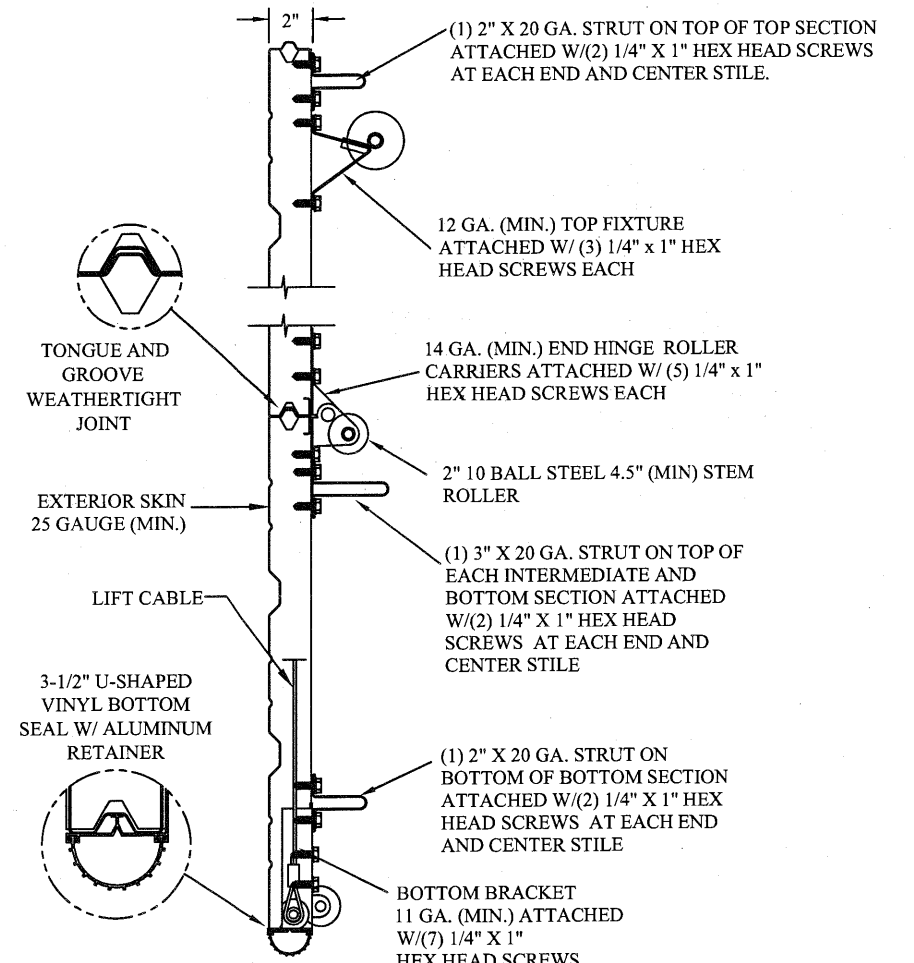


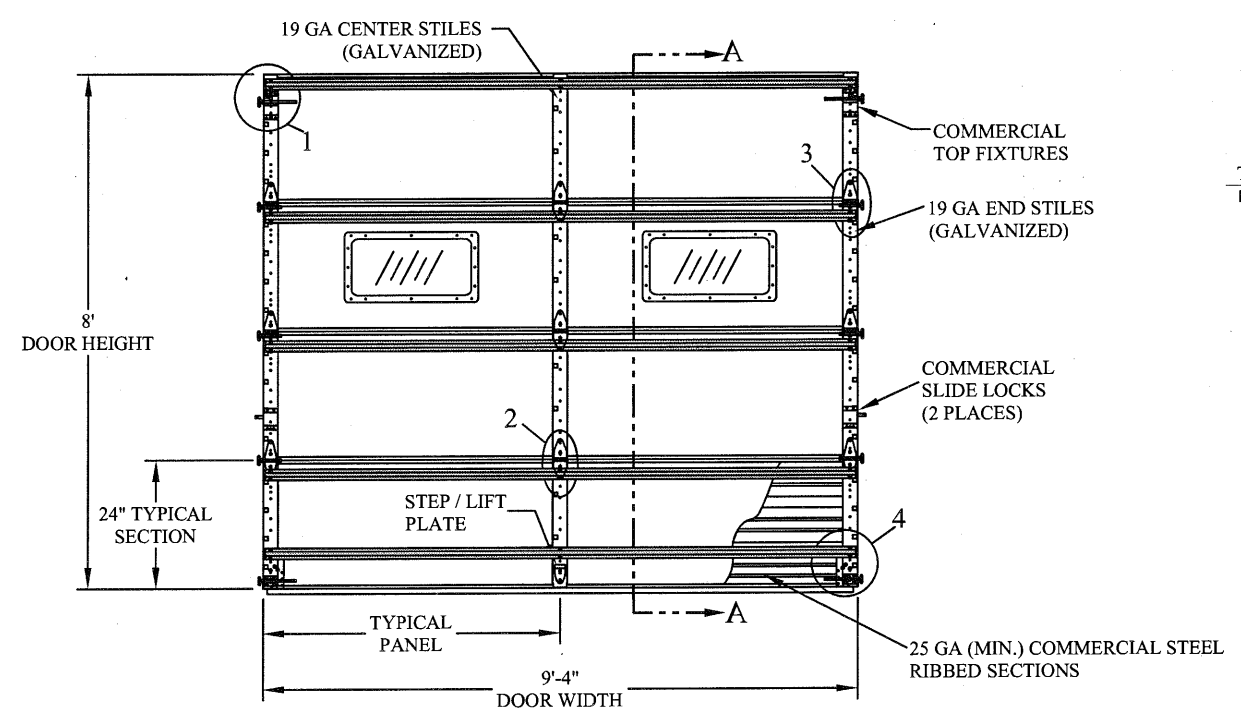
TYPICAL TOP FIXTURES
N.T.S. 1



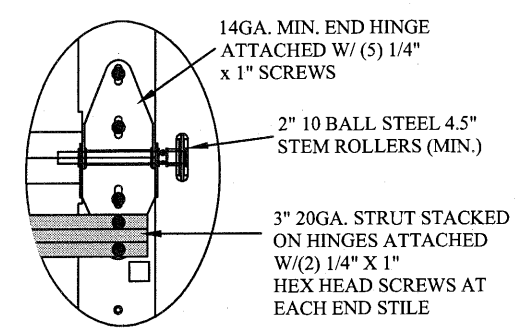
TYPICAL CENTER HINGE
N.T.S. 2



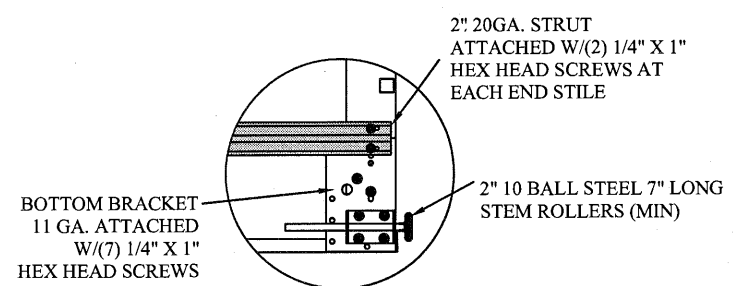
SECTION A-A (SIDE VIEW)
N.T.S.



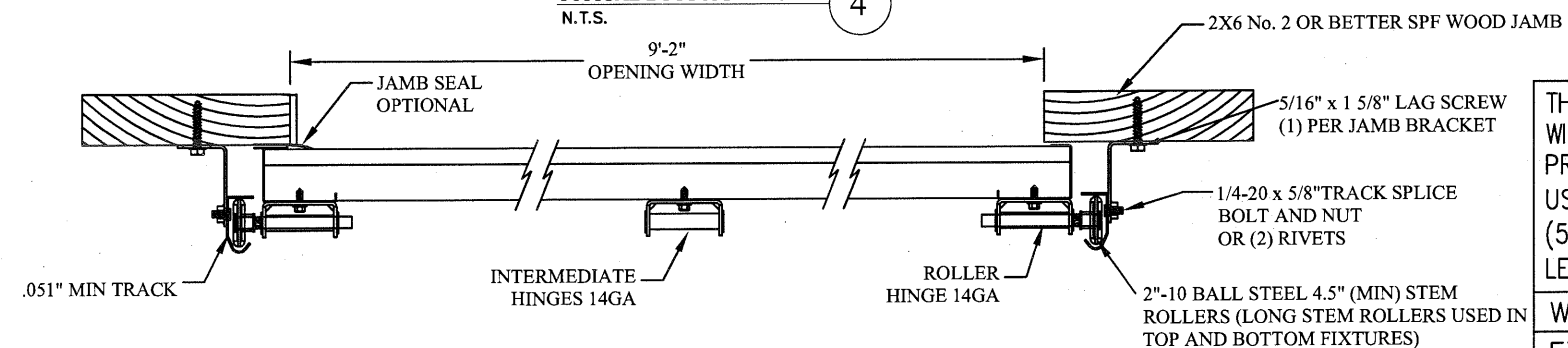
DOOR INTERIOR ELEVATION
N.T.S.



TYPICAL END HINGE
N.T.S. 3



TYPICAL BOTTOM BRACKET
N.T.S. 4



2\"/>

THE METHOD OF TESTING WAS IN SUBSTANTIAL CONFORMANCE WITH THE PROCEDURES DESCRIBED IN DASMA 108. THE PRESSURES SHOWN ON THE DRAWINGS WERE CALCULATED USING ASCE 7-98/02/05 WITH THE FOLLOWING PARAMETERS (5 FEET OF DOOR WIDTH IN END ZONE, ROOF SLOPE 10' OR LESS, AND I=1.0):

WIND SPEED (MPH)	130	118	112	107	103
EXPOSURE LEVEL	B	C	C	D	D
MEAN ROOF HEIGHT	30'	15'	25'	15'	25'

REV	DESCRIPTION OF REVISIONS	DATE	BY

MAX SIZE
9'4 x 24'

DESIGN LOADS
+24.2 PSF
-28.4 PSF

TEST LOADS
+36.3 PSF
-42.6 PSF

Thomas L. Shelmerdine, PE (TX PE #85829)
Structural Solutions, PA (TX Firm #F-004063)

TX

5921-G W. Friendly Ave., Greensboro, NC 27410

Amarr
ENTREMATIC

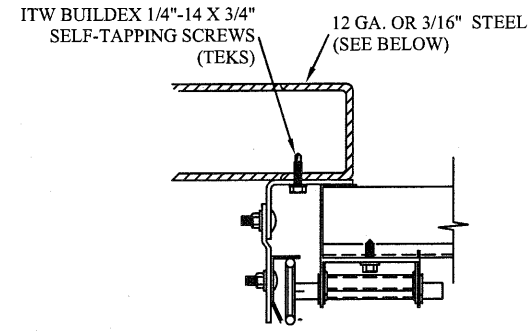
MODEL 2500 AMARR 2502, 2512
MODEL 2400 AMARR 2402, 2412, 2422
MODEL 2000 AMARR 2002, 2012, 2022

SIZE	DRAWN BY	RLR	DATE	8/2/17	DRAWING NUMBER
B	CHECKED BY	RLR	DATE	8/2/17	BC-2509-130-15-R

ENTREMATIC
165 CARRIAGE COURT WINSTON-SALEM, N.C. 27105

SHEET 1 OF 4

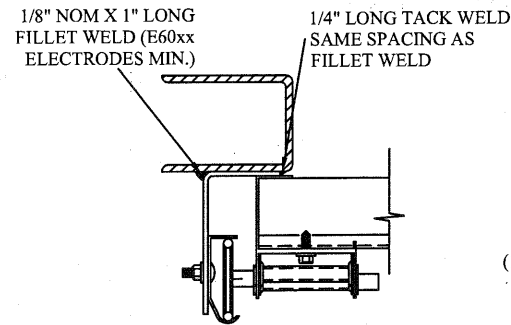
TRACK CONNECTION DIRECTLY TO STRUCTURE OPTIONS



CLIP STYLE REVERSE ANGLE MOUNT SHOWN
BRACKET, CONTINUOUS AND TAPERED ANGLE
MOUNT AVAILABLE

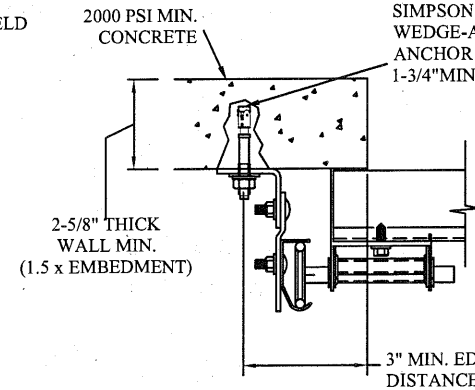
12 GA. STEEL FRAMING
232 LBS./SCREW ALLOWABLE LOAD - 6" FROM ENDS
AND 24" O.C.
REFER TO NOTES: 1, 2 AND 5

3/16" STEEL FRAMING
569 LBS./SCREW ALLOWABLE LOAD - 6" FROM ENDS
AND 24" O.C.
REFER TO NOTES: 1, 2 AND 5



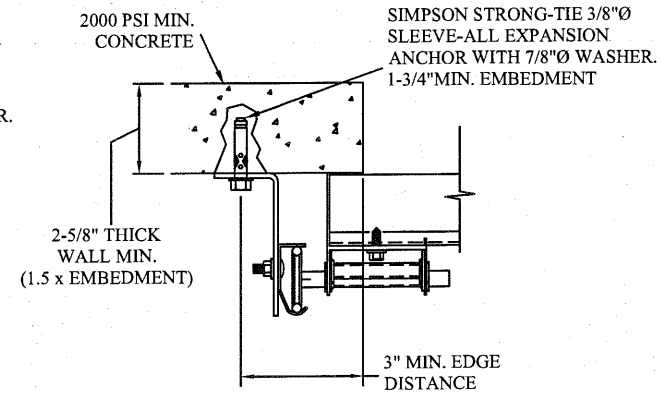
REVERSE ANGLE MOUNT SHOWN
BRACKET, CONTINUOUS AND TAPERED
ANGLE MOUNT AVAILABLE

STEEL FRAMING 12GA OR BETTER
1590 LBS./IN. ALLOWABLE LOAD - 6"
FROM ENDS AND 24" O.C.
REFER TO NOTES: 1, 2, 5, 6, 7, 8 AND 9



CLIP STYLE CONTINUOUS ANGLE MOUNT SHOWN
BRACKET, REVERSE AND TAPERED ANGLE MOUNT
AVAILABLE

2000 PSI CONCRETE OR GREATER
351 LBS./EXPANSION ANCHOR ALLOWABLE LOAD - 6"
FROM ENDS AND 24" O.C.
REFER TO NOTES: 1, 2, 3, 4 AND 5



CONTINUOUS ANGLE MOUNT SHOWN
BRACKET, CONTINUOUS AND TAPERED ANGLE
MOUNT AVAILABLE

2000 PSI CONCRETE OR GREATER
336 LBS./EXPANSION ANCHOR ALLOWABLE LOAD - 6"
FROM ENDS AND 24" O.C.
REFER TO NOTES: 1, 2, 3, 4 AND 5

SPECIFICATIONS AND NOTES

- ALL THE LOAD FROM THE DOOR IS TRANSFERRED TO THE VERTICAL TRACK, FROM THE TRACK THE LOAD IS TRANSFERRED TO THE VERTICAL JAMBS. THE HORIZONTAL JAMB OR HEADER RECEIVES NO PORTION OF THE LOAD TRANSFERRED FROM THE DOOR.
- EACH VERTICAL JAMBS RECEIVES MAXIMUM DESIGN LOADS OF: +112.9 LBS/FT AND -132.5 LBS/FT
- DOOR AND HARDWARE WILL BE DESIGNED, MANUFACTURED AND INSTALLED WITH STANDARDS AS SET FORTH BY DASMA.
- DOOR SECTIONS SHALL BE 25 GA. (.018) MIN. EXTERIOR SKIN ROLLED FORMED, GALVANIZATION W/ BAKED ON POLYESTER FINISH
- DOORS UP TO 24' HIGH USE (1) 2" 20GA STRUT ON TOP SECTION, (1) 3" 20GA STRUT ON THE TOP OF EACH INTERMEDIATE AND BOTTOM SECTION, AND (1) 2" 20GA STRUT ON BOTTOM OF BOTTOM SECTION.
- SUPPORTING STRUCTURAL ELEMENTS SHALL BE DESIGNED BY A REGISTERED PROFESSIONAL ENGINEER FOR WIND LOADS INDICATED ON THIS DRAWING IN ADDITION TO OTHER LOADINGS.

WOOD JAMB ATTACHMENT TO STRUCTURE (OPTIONAL)

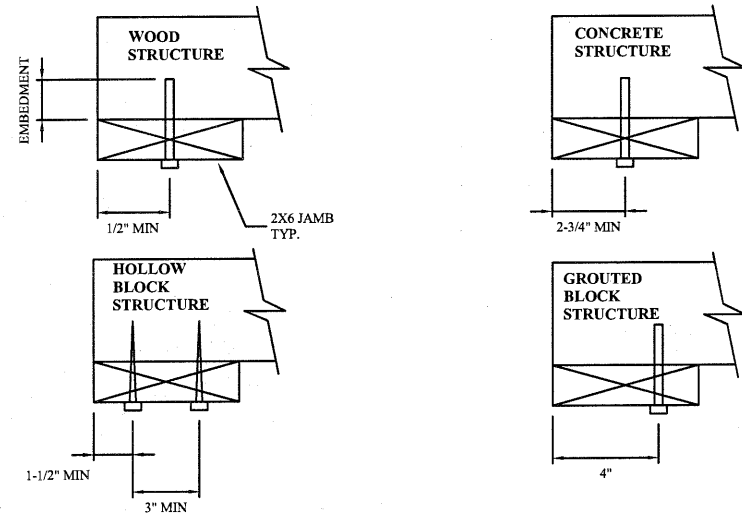
2 X 6 VERTICAL JAMB ATTACHMENT TO WOOD FRAME STRUCTURE
5/16" X 3" LAG SCREWS STARTING 6" FROM ENDS THEN 24" O.C. (1 1/2" EMBEDMENT)

2 X 6 VERTICAL JAMB ATTACHMENT TO 2,000 PSI CONCRETE
HILTI KWIK BOLT 3/8" X 4" STARTING 6" FROM ENDS THEN 24" O.C. (2 1/2" EMBEDMENT)
HILTI SLEEVE ANCHOR 3/8" X 2-3/4" STARTING 6" FROM ENDS THEN 24" O.C. (1 1/4" EMBEDMENT)
ITW/RAMSET REDHEAD (TRU-BOLT) 3/8" X 4" STARTING 6" FROM ENDS THEN 24" O.C. (2 1/2" EMBEDMENT)

2 X 6 VERTICAL JAMB ATTACHMENT TO HOLLOW C-90 BLOCK
SIMPSON 1/4" X 3" TITEN SCREWS STARTING 6" FROM ENDS, USE PAIRS OF FASTENERS (3" APART) AT 24" O.C. (1 1/2" EMBEDMENT)
HILTI 1/4" X 2-3/4" KWIK-CON II- SCREWS STARTING 6" FROM ENDS, USE PAIRS OF FASTENERS (3" APART) AT 24" O.C. (1 1/4" EMBEDMENT)

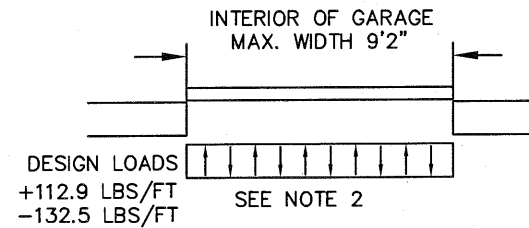
2 X 6 VERTICAL JAMB ATTACHMENT TO GROUTED C-90 BLOCK (2000 PSI GROUT)
HILTI SLEEVE ANCHOR 3/8" X 2-3/4" STARTING 6" FROM ENDS THEN 24" O.C. (1 1/4" EMBEDMENT)
(OR, USE FASTENERS FOR HOLLOW C-90 BLOCK)

*LAGS AND BOLTS CAN BE COUNTERSUNK TO PROVIDE A FLUSH MOUNTING SURFACE.
*PREPARATION OF WOOD JAMBS BY OTHERS



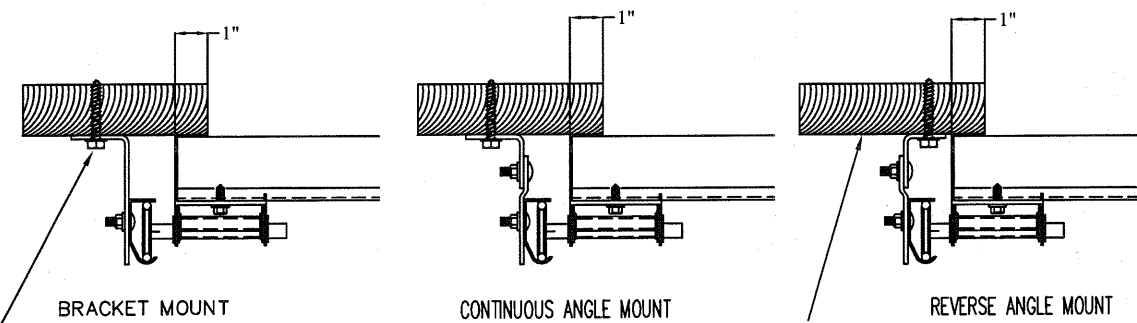
NOTES:

- ANCHORS TO BE EVENLY SPACED BETWEEN THE HEADER AND FLOOR.
- FIRST (BOTTOM) ANCHOR STARTING AT NO MORE THAN HALF OF THE MAXIMUM ON-CENTER DISTANCE. HIGHEST ANCHOR INSTALLED AT LEAST AS HIGH AS THE DOOR OPENING.
- MIN. EDGE DISTANCE OF 3" REQUIRED.
- USE WASHERS PROVIDED BY THE ANCHOR MANUFACTURER.
- SUPPORTING STRUCTURAL ELEMENTS SHALL BE DESIGNED BY A REGISTERED PROFESSIONAL ENGINEER FOR WIND LOADS IN ADDITION TO OTHER LOADS.
- MOST GARAGE DOOR TRACK IS GALVANIZED STEEL. USE ALL NECESSARY PRECAUTIONS WHEN WELDING GALVANIZED STEEL.
- ALL WELDS SHOULD BE PERFORMED BY A CERTIFIED WELDER OR INSPECTED BY A CERTIFIED WELDING INSPECTOR TO VERIFY THE INTEGRITY OF THE WELD.
- FILLET WELDS TO HAVE A STRAIGHT OR CONVEX FACE SURFACE.
- TACK WELD TOE OF ANGLE AT SAME SPACING TO PREVENT ROTATION OF TRACK ANGLE.



TRACK CONNECTION TO WOOD JAMB OPTIONS

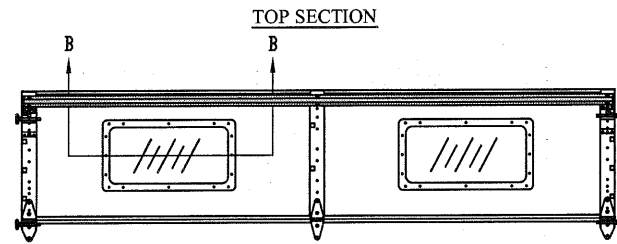
FOR LAG SCREWS & BRACKET SPACING SEE PAGE 4 FOR TRACK CONFIGURATION DETAIL



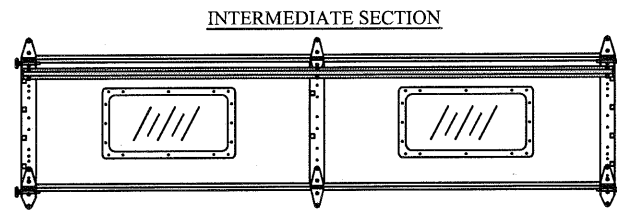
5/16" x 1 5/8" LAG SCREW (1) PER
JAMB BRACKET (1-1/2" EMBEDMENT
MINIMUM) (TYP.)

2x6 WOOD JAMB SYP
(NO.2) OR BETTER (TYP.)

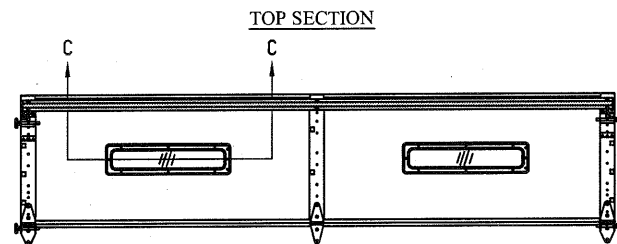
REV	DESCRIPTION OF REVISIONS	DATE	BY
	MAX SIZE 9'4" x 24'		
	DESIGN LOADS +24.2 PSF -28.4 PSF		
	TEST LOADS +36.3 PSF -42.6 PSF		
	Amarr ENTRE/MATIC		
	MODEL 2500 AMARR 2502, 2512 MODEL 2400 AMARR 2402, 2412, 2422 MODEL 2000 AMARR 2002, 2012, 2022		
	SIZE B	DRAWN BY RLR	DATE 8/2/17
	CHECKED BY RLR	DATE 8/2/17	DRAWING NUMBER IBC-2509-130-15-R
	ENTRE/MATIC 165 CARRIAGE COURT WINSTON-SALEM, N.C. 27105		
	SHEET 2 OF 4		



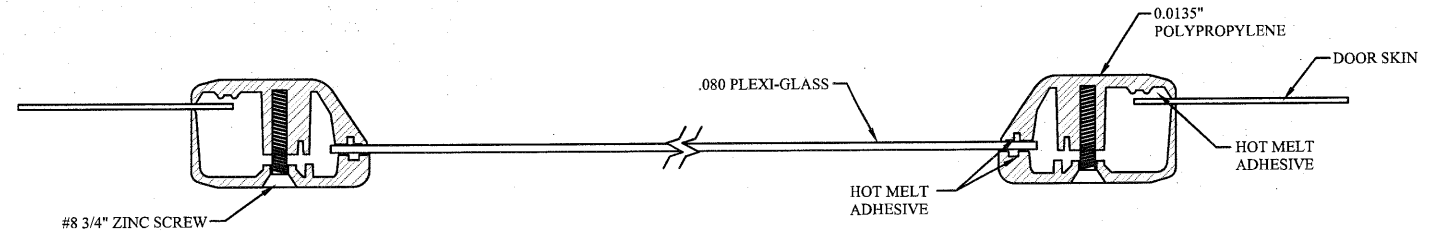
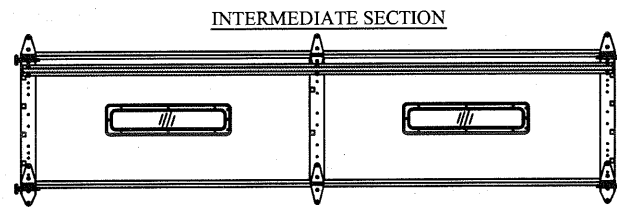
OPTIONAL GLAZED SECTION W/ 24" X 12" WINDOWS AND STRUT LAYOUT
N.T.S.



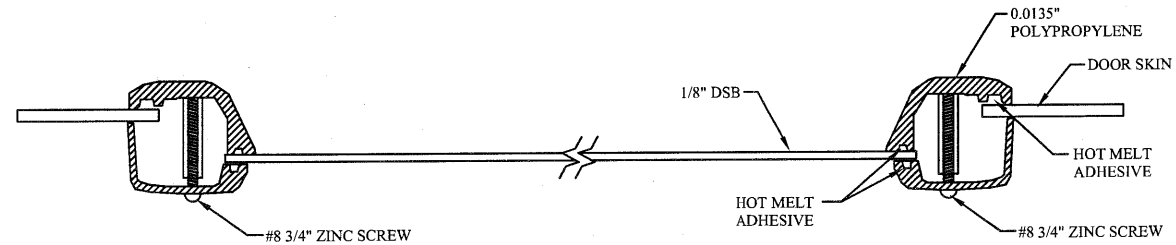
OPTIONAL GLAZED SECTION W/ 24" X 6" WINDOWS AND STRUT LAYOUT
N.T.S.



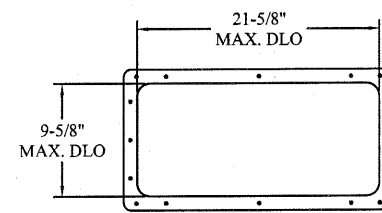
OPTIONAL GLAZED SECTION W/ 24" X 6" WINDOWS AND STRUT LAYOUT
N.T.S.



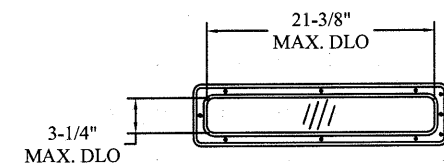
SECTION B-B 24" X 12" WINDOW DETAIL W/ .080 PLEXI-GLASS
N.T.S.



SECTION C-C 24" X 6" WINDOW DETAIL W/ 1/8 DSB GLASS
N.T.S. (ALSO AVAILABLE WITH .080" PLEXI-GLASS)



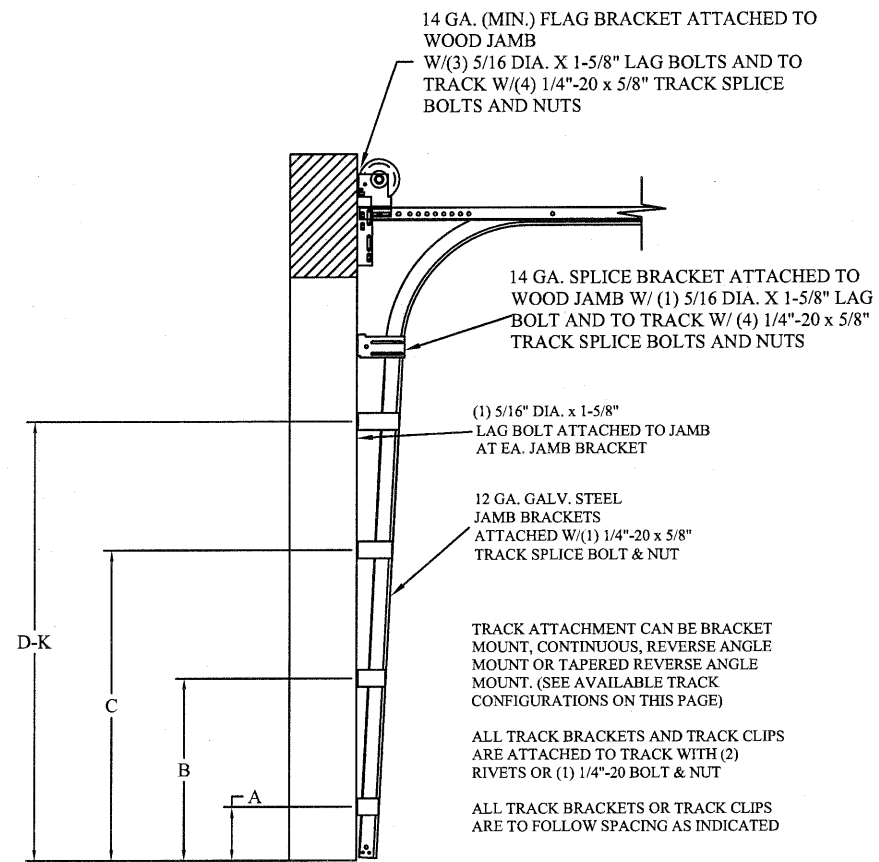
24" X 12" DAY LIGHT OPENING AND FASTENER DETAIL
N.T.S.



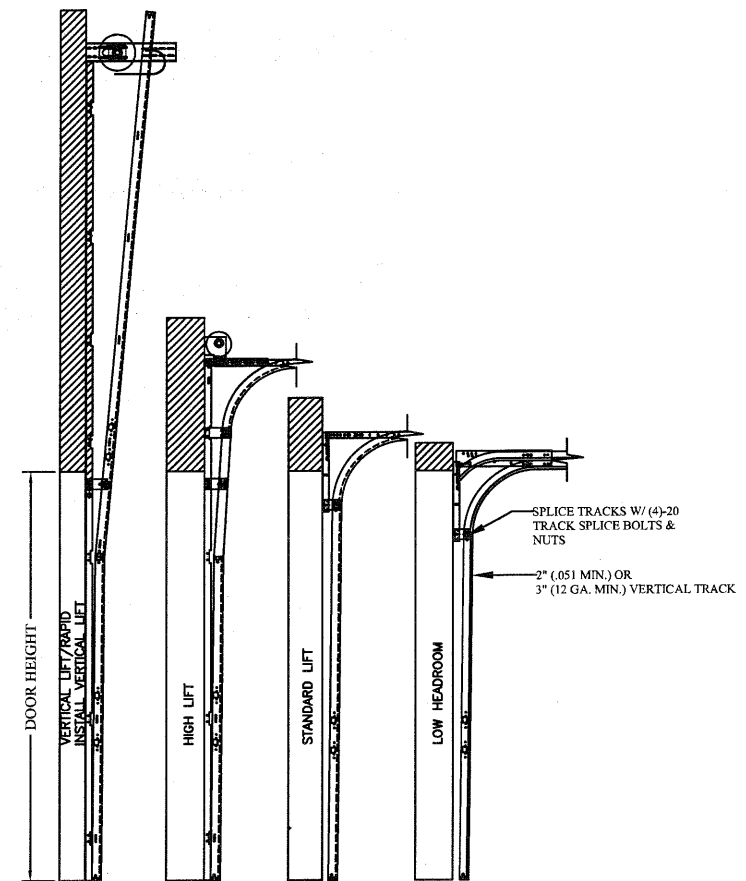
24" X 6" DAY LIGHT OPENING AND FASTENER DETAIL
N.T.S.

REV	DESCRIPTION OF REVISIONS	DATE	BY
	MAX SIZE 9'4" x 24' DESIGN LOADS +24.2 PSF -28.4 PSF TEST LOADS +36.3 PSF -42.6 PSF		
	Thomas L. Shelmerdine, PE (TX #85829) Structural Solutions, PA (TX Firm #F-004063)		
	MODEL 2500 AMARR 2502, 2512 MODEL 2400 AMARR 2402, 2412, 2422 MODEL 2000 AMARR 2002, 2012, 2022		
	SIZE DRAWN BY RLR DATE 8/2/17 B CHECKED BY RLR DATE 8/2/17		
	ENTREMATIC 165 CARRIAGE COURT WINSTON-SALEM, N.C. 27105		
			DRAWING NUMBER BC-2509-130-15-R SHEET 3 OF 4

5921-G W. Friendly Ave., Greensboro, NC 27410



TRACK CONFIGURATION FOR UP TO 24' TALL DOORS
SEE TABLE 2



AVAILABLE TRACK CONFIGURATIONS
N.T.S.

TABLE 1

Section	Center Stile	Max Design Loads Allowed	
		Positive (PSF)	Negative (PSF)
Width (ft)	1st (in)		
6' 0	36"	37.4	43.9
6' 2	37"	36.4	42.7
6' 4	38"	35.4	41.6
6' 6	39"	34.5	40.5
6' 8	40"	33.6	39.5
6' 10	41"	32.8	38.5
7' 0	42"	32.0	37.6
7' 2	43"	31.3	36.7
7' 4	44"	30.6	35.9
7' 6	45"	29.9	35.1
7' 8	46"	29.3	34.3
7' 10	47"	28.7	33.6
8' 0	48"	28.1	32.9
8' 2	49"	27.5	32.2
8' 4	50"	27.0	31.6
8' 6	51"	26.4	30.9
8' 8	52"	25.9	30.3
8' 10	53"	25.4	29.9
9' 0	54"	24.9	29.3
9' 2	55"	24.5	28.8
9' 4	56"	24.2	28.4

TABLE 2

DOOR HEIGHT	TRACK ATTACHMENT											TYPICAL SPLICE
	A	B	C	D	E	F	G	H	I	J	K	
7' 0"	10"	34"	58"									76"
7' 6"	10"	34"	58"									82"
8' 0"	10"	34"	58"									88"
8' 6"	10"	34"	58"	82"								94"
9' 0"	10"	34"	58"	82"								100"
9' 6"	10"	34"	58"	82"								106"
10' 0"	10"	34"	58"	82"								112"
11' 0"	10"	34"	58"	82"	106"							124"
12' 0"	10"	34"	58"	82"	106"							136"
13' 0"	10"	34"	58"	82"	106"	130"						148"
14' 0"	10"	34"	58"	82"	106"	130"						160"
15' 0"	10"	34"	58"	82"	106"	130"	154"					172"
16' 0"	10"	34"	58"	82"	106"	130"	154"					184"
17' 0"	10"	34"	58"	82"	106"	130"	154"	178"				196"
18' 0"	10"	34"	58"	82"	106"	130"	154"	178"				208"
19' 0"	10"	34"	58"	82"	106"	130"	154"	178"	202"			220"
20' 0"	10"	34"	58"	82"	106"	130"	154"	178"	202"			232"
21' 0"	10"	34"	58"	82"	106"	130"	154"	178"	202"	226"		244"
22' 0"	10"	34"	58"	82"	106"	130"	154"	178"	202"	226"		256"
23' 0"	10"	34"	58"	82"	106"	130"	154"	178"	202"	226"	250"	268"
24' 0"	10"	34"	58"	82"	106"	130"	154"	178"	202"	226"	250"	280"

ALL TRACK ATTACHMENTS +/- 2" ALLOWED USING SYP OR SPF NO.2 OR BETTER ONLY.
AMARR MODEL 2500 ONLY AVAILABLE UP TO 14'

REV	DESCRIPTION OF REVISIONS	DATE	BY

MAX SIZE
9'4 x 24'

DESIGN LOADS
+24.2 PSF
-28.4 PSF

TEST LOADS
+36.3 PSF
-42.6 PSF

TX

Thomas L. Shelmerdine, PE (TX PE #85829)
Structural Solutions, PA (TX Firm #F-004063)

5921-G W. Friendly Ave., Greensboro, NC 27410

MODEL 2500 AMARR 2502, 2512
MODEL 2400 AMARR 2402, 2412, 2422
MODEL 2000 AMARR 2002, 2012, 2022

SIZE	DRAWN BY	RLR	DATE	8/2/17	DRAWING NUMBER
B	CHECKED BY	RLR	DATE	8/2/17	BC-2509-130-15-R

ENTREMATIC
165 CARRIAGE COURT WINSTON-SALEM, N.C. 27105

SHEET 4 OF 4