

THE METHOD OF TESTING WAS IN SUBSTANTIAL CONFORMANCE WITH THE PROCEDURES DESCRIBED IN DASMA 108. THE PRESSURES SHOWN ON THE DRAWINGS WERE CALCULATED USING ASCE 7-98/02/05 WITH THE FOLLOWING PARAMETERS (5 FEET OF DOOR WIDTH IN END ZONE, ROOF SLOPE 10° OR LESS, AND I=1.0):

WIND SPEED (MPH)	136	123	117	112	107
EXPOSURE LEVEL	B	C	C	D	D
MEAN ROOF HEIGHT	30'	15'	25'	15'	25'

REV	DESCRIPTION OF REVISIONS	DATE	BY

MAX SIZE 18'2" x 14'

DESIGN LOADS +25.1 PSF -28.4 PSF

TEST LOADS +37.7 PSF -42.6 PSF

Thomas L. Shelmerdine, PE (TX PE #85829) Structural Solutions, PA (TX Firm #1-004063)

STATE OF TEXAS  
THOMAS L. SHELMERDINE  
85829  
LICENSED PROFESSIONAL ENGINEER  
TX

5921-G W. Friendly Ave., Greensboro, NC 27410

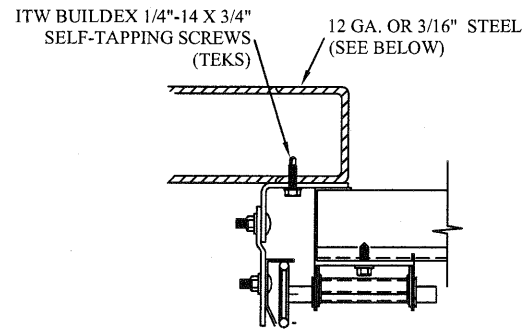
**ENTRE//MATIC**  
165 CARRIAGE COURT WINSTON-SALEM, N.C. 27105

**AMARR MODEL #1380**

SIZE	DRAWN BY	RLR	DATE	12/08/14	DRAWING NUMBER
B	CHECKED BY	RLR	DATE	12/08/14	IBC-1818-136-26

SHEET 1 OF 4

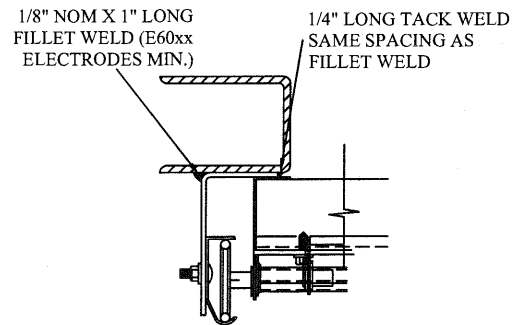
# TRACK CONNECTION DIRECTLY TO STRUCTURE OPTIONS



CLIP STYLE REVERSE ANGLE MOUNT SHOWN  
BRACKET, CONTINUOUS AND TAPERED ANGLE  
MOUNT AVAILABLE

**12 GA. STEEL FRAMING**  
232 LBS./SCREW ALLOWABLE LOAD - 6" FROM ENDS  
AND 12" O.C.  
REFER TO NOTES: 1, 2 AND 5

**3/16" STEEL FRAMING**  
569 LBS./SCREW ALLOWABLE LOAD - 6" FROM ENDS  
AND 24" O.C.  
REFER TO NOTES: 1, 2 AND 5

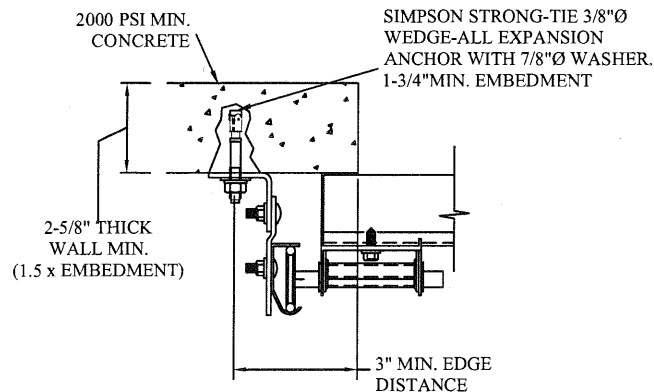


REVERSE ANGLE MOUNT SHOWN  
BRACKET, CONTINUOUS AND TAPERED  
ANGLE MOUNT AVAILABLE

**STEEL FRAMING 12GA OR BETTER**  
1590 LBS./IN. ALLOWABLE LOAD - 6"  
FROM ENDS AND 24" O.C.  
REFER TO NOTES: 1, 2, 5, 6, 7, 8 AND 9

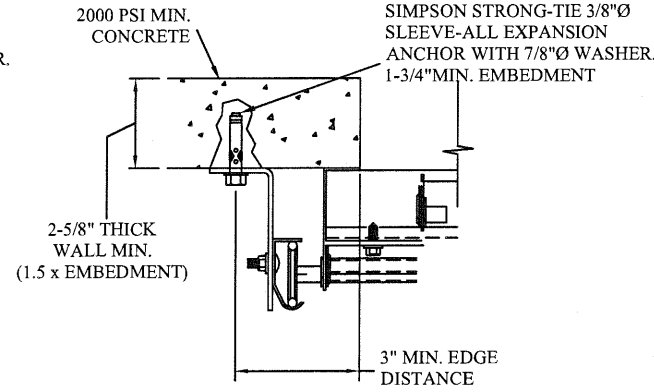
- NOTES:**
1. ANCHORS TO BE EVENLY SPACED BETWEEN THE HEADER AND FLOOR.
  2. FIRST (BOTTOM) ANCHOR STARTING AT NO MORE THAN HALF OF THE MAXIMUM ON-CENTER DISTANCE. HIGHEST ANCHOR INSTALLED AT LEAST AS HIGH AS THE DOOR OPENING.
  3. MIN. EDGE DISTANCE OF 3" REQUIRED.
  4. USE WASHERS PROVIDED BY THE ANCHOR MANUFACTURER.
  5. SUPPORTING STRUCTURAL ELEMENTS SHALL BE DESIGNED BY A REGISTERED PROFESSIONAL ENGINEER FOR WIND LOADS IN ADDITION TO OTHER LOADS.
  6. MOST GARAGE DOOR TRACK IS GALVANIZED STEEL. USE ALL NECESSARY PRECAUTIONS WHEN WELDING GALVANIZED STEEL.
  7. ALL WELDS SHOULD BE PERFORMED BY A CERTIFIED WELDER OR INSPECTED BY A CERTIFIED WELDING INSPECTOR TO VERIFY THE INTEGRITY OF THE WELD.
  8. FILLET WELDS TO HAVE A STRAIGHT OR CONVEX FACE SURFACE.
  9. TACK WELD TOE OF ANGLE AT SAME SPACING TO PREVENT ROTATION OF TRACK ANGLE.

# WOOD JAMB ATTACHMENT TO STRUCTURE (OPTIONAL)



CLIP STYLE CONTINUOUS ANGLE MOUNT SHOWN  
BRACKET, REVERSE AND TAPERED ANGLE MOUNT  
AVAILABLE

**2000 PSI CONCRETE OR GREATER**  
351 LBS./EXPANSION ANCHOR ALLOWABLE LOAD - 6"  
FROM ENDS AND 18" O.C.  
REFER TO NOTES: 1, 2, 3, 4 AND 5



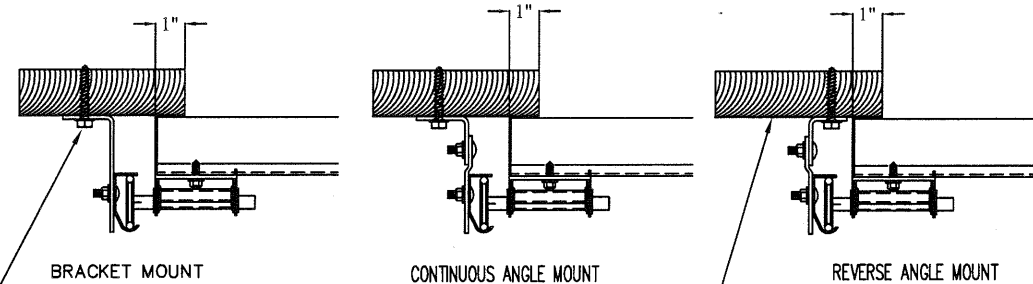
CONTINUOUS ANGLE MOUNT SHOWN  
BRACKET, CONTINUOUS AND TAPERED ANGLE  
MOUNT AVAILABLE

**2000 PSI CONCRETE OR GREATER**  
336 LBS./EXPANSION ANCHOR ALLOWABLE LOAD - 6"  
FROM ENDS AND 16" O.C.  
REFER TO NOTES: 1, 2, 3, 4 AND 5

- 2 X 6 VERTICAL JAMB ATTACHMENT TO WOOD FRAME STRUCTURE**  
5/16" X 3" LAG SCREWS STARTING 6" FROM ENDS  
THEN 20" O.C. (1 1/2" EMBEDMENT)
- 2 X 6 VERTICAL JAMB ATTACHMENT TO 2,000 PSI CONCRETE**  
HILTI KWIK BOLT 3/8" X 4" STARTING 6" FROM ENDS  
THEN 24" O.C. (2 1/2" EMBEDMENT)  
HILTI SLEEVE ANCHOR 3/8" X 2-3/4" STARTING 6" FROM ENDS  
THEN 18" O.C. (1 1/4" EMBEDMENT)  
ITW/RAMSET REDHEAD (TRU-BOLT) 3/8" X 4" STARTING 6" FROM ENDS  
THEN 24" O.C. (2 1/2" EMBEDMENT)
- 2 X 6 VERTICAL JAMB ATTACHMENT TO HOLLOW C-90 BLOCK**  
SIMPSON 1/4" X 3" TITEN SCREWS STARTING 6" FROM ENDS,  
USE PAIRS OF FASTENERS (3" APART)  
AT 8" O.C. (1 1/2" EMBEDMENT)  
HILTI 1/4" X 2-3/4" KWIK-CON II+ SCREWS STARTING 6" FROM ENDS,  
USE PAIRS OF FASTENERS (3" APART) AT 8" O.C. (1 1/4" EMBEDMENT)
- 2 X 6 VERTICAL JAMB ATTACHMENT TO GROUTED C-90 BLOCK (2000 PSI GROUT)**  
HILTI SLEEVE ANCHOR 3/8" X 2-3/4" STARTING 6" FROM ENDS  
THEN 22" O.C. (1 1/4" EMBEDMENT)  
(OR, USE FASTENERS FOR HOLLOW C-90 BLOCK)
- \*LAGS AND BOLTS CAN BE COUNTERSUNK TO PROVIDE A FLUSH MOUNTING SURFACE.  
\*PREPARATION OF WOOD JAMBS BY OTHERS

# TRACK CONNECTION TO WOOD JAMB OPTIONS

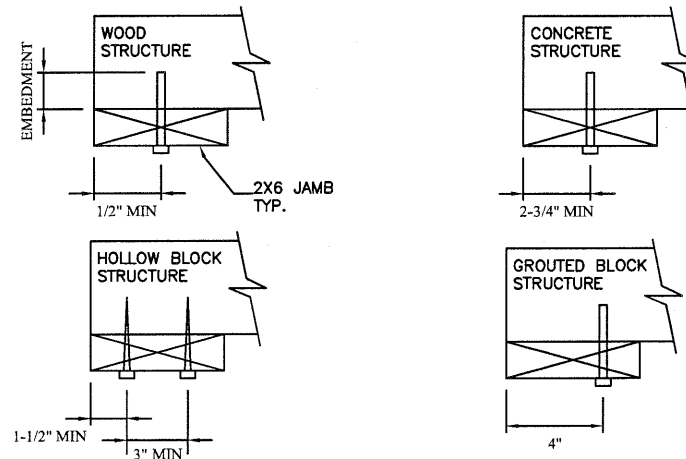
FOR LAG SCREWS & BRACKET SPACING SEE TRACK CONFIGURATION DETAIL



BRACKET MOUNT  
5/16" x 1 5/8" LAG SCREW (1) PER  
JAMB BRACKET (1-1/2" EMBEDMENT  
MINIMUM) (TYP.)

CONTINUOUS ANGLE MOUNT  
2x6 WOOD JAMB SYP OR SPF  
(NO.2) OR BETTER (TYP.)

REVERSE ANGLE MOUNT



REV	DESCRIPTION OF REVISIONS	DATE	BY

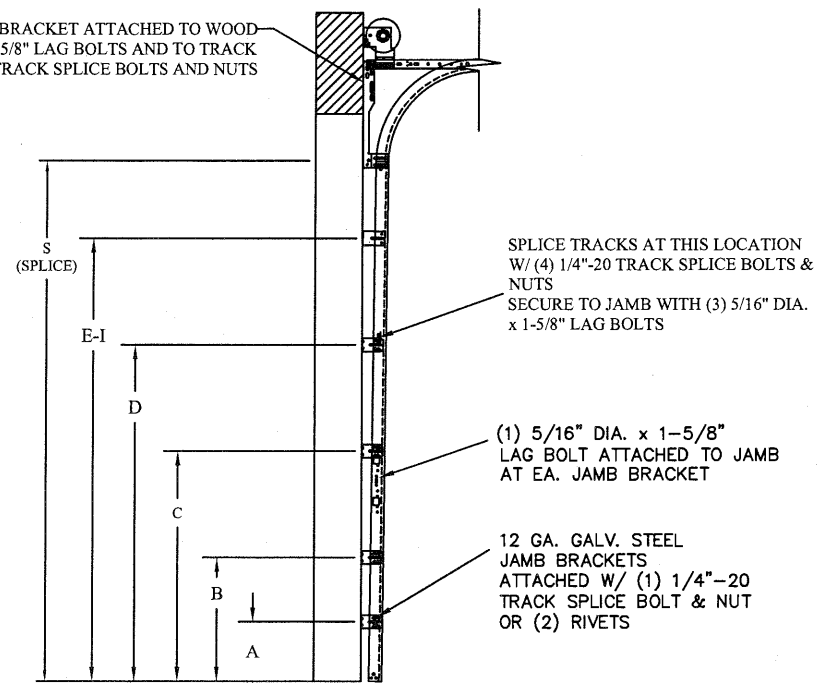
  

MAX SIZE 18'2 x 14'		DESIGN LOADS +25.1 PSF -28.4 PSF
TEST LOADS +37.7 PSF -42.6 PSF		TX

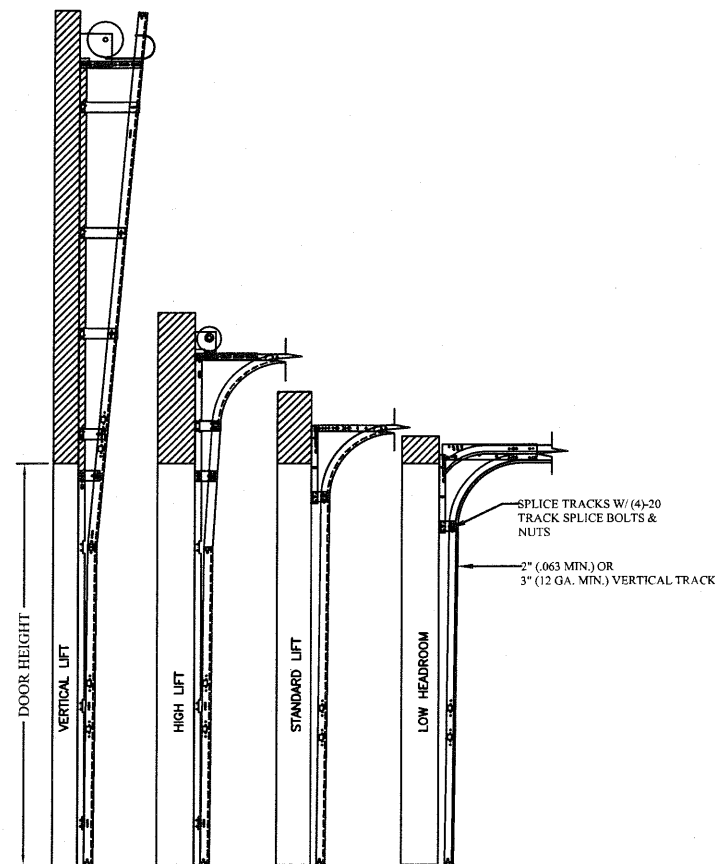
**ENTRE/MATIC**  
165 CARRIAGE COURT WINSTON-SALEM, N.C. 27105

<b>AMARR MODEL #1380</b>			
SIZE	DRAWN BY	DATE	
B	RLR	12/08/14	
	CHECKED BY	DATE	
	RLR	12/08/14	IBC-1818-136-26
			SHEET 2 OF 4

14 GA. FLAG BRACKET ATTACHED TO WOOD JAMB W/ (3) 5/16 DIA. X 1-5/8" LAG BOLTS AND TO TRACK W/ (4) 1/4"-20 X 5/8" TRACK SPLICE BOLTS AND NUTS



TRACK CONFIGURATION FOR 8' TALL DOORS  
N.T.S.  
SEE TABLE 2 FOR TRACK ATTACHMENT SPACING



AVAILABLE TRACK CONFIGURATIONS  
N.T.S.

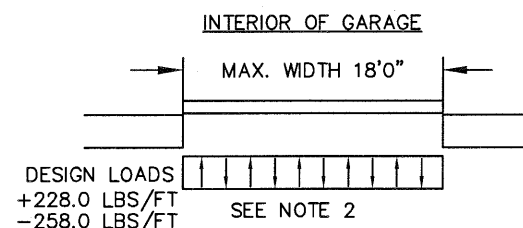
TABLE 1

Section Width (ft)	Center Stile Locations (Measured from Left Edge)			Max Design Loads Allowed	
	1st (in)	2nd (in)	3rd (in)	Positive (PSF)	Negative (PSF)
16' 4"	52.168	98.000	143.834	27.7	31.4
16' 6"	51.340	99.000	146.660	27.4	31.1
16' 8"	52.200	100.000	147.800	27.2	30.8
16' 10"	53.200	101.000	148.800	26.9	30.4
17' 0"	54.200	102.000	149.800	26.6	30.1
17' 2"	55.2	103.0	150.8	26.4	29.9
17' 4"	56.200	104.000	151.800	26.1	29.6
17' 6"	57.200	105.000	152.800	25.9	29.3
17' 8"	55.800	106.000	156.200	25.6	29.0
17' 10"	56.250	107.000	157.750	25.4	28.7
18' 0"	57.800	108.000	158.200	25.2	28.5
18' 2"	57.3	109.0	160.7	25.1	28.4

TABLE 2

DOOR HEIGHT	TRACK ATTACHMENT									TYPICAL SPLICE
	A	B	C	D	E	F	G	H	I	
7' 0"	10.0"	21"	39"	57"						76"
7' 6"	10.0"	21"	39"	57"	75"					82"
8' 0"	10.0"	21"	39"	57"	75"					88"
9' 0"	10.0"	21"	39"	57"	75"	93"				100"
9' 6"	10.0"	21"	39"	57"	75"	93"				106"
10' 0"	10.0"	21"	39"	57"	75"	93"				112"
11' 0"	10.0"	21"	39"	57"	75"	93"	111"			124"
12' 0"	10.0"	21"	39"	57"	75"	93"	111"	129"		136"
13' 0"	10.0"	21"	39"	57"	75"	93"	111"	129"		148"
14' 0"	10.0"	21"	39"	57"	75"	93"	111"	129"	147"	160"

ALL TRACK ATTACHMENT SPACING +/-1.5" ALLOWED WITH SPF OR SYP NO. 2 OR BETTER ONLY



SPECIFICATIONS AND NOTES

1. ALL THE LOAD FROM THE DOOR IS TRANSFERRED TO THE VERTICAL TRACK, FROM THE TRACK THE LOAD IS TRANSFERRED TO THE VERTICAL JAMBS. THE HORIZONTAL JAMB OR HEADER RECEIVES NO PORTION OF THE LOAD TRANSFERRED FROM THE DOOR.
2. EACH VERTICAL JAMBS RECEIVES MAXIMUM DESIGN LOADS OF: +228.0 LBS/FT & -258.0 LBS/FT
3. DOOR AND HARDWARE WILL BE DESIGNED, MANUFACTURED AND INSTALLED WITH STANDARDS AS SET FORTH BY DASMA.
4. DOOR SECTIONS SHALL BE 27 GA. (.015) MIN. EXTERIOR SKIN ROLLED FORMED, W/ BAKED ON POLYESTER FINISH
5. DOORS UP TO 14'0" HIGH HAVE (1) 5.5" 18GA R-TRUSS PER SECTION AND (1) 3" 20GA STRUT ON THE BOTTOM SECTION
6. SUPPORTING STRUCTURAL ELEMENTS SHALL BE DESIGNED BY A REGISTERED PROFESSIONAL ENGINEER FOR WIND LOADS INDICATED ON THIS DRAWING IN ADDITION TO OTHER LOADINGS.

DESCRIPTION OF REVISIONS		DATE	BY
MAX SIZE 18'2 x 14'			
DESIGN LOADS +25.1 PSF -28.4 PSF			
TEST LOADS +37.7 PSF -42.6 PSF			

THOMAS L. SHELMERDINE  
85829  
LICENSED PROFESSIONAL ENGINEER  
TX

Thomas L. Shelmerdine, PE (TX PE #85829) Structural Solutions, PA (TX Firm #F-004063)

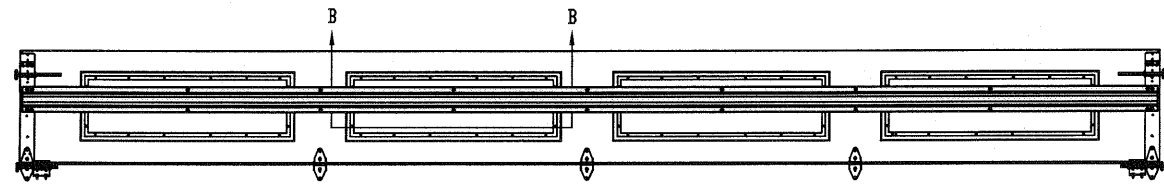
5921-G W. Friendly Ave., Greensboro, NC 27410

**ENTRE//MATIC**  
165 CARRIAGE COURT WINSTON-SALEM, N.C. 27105

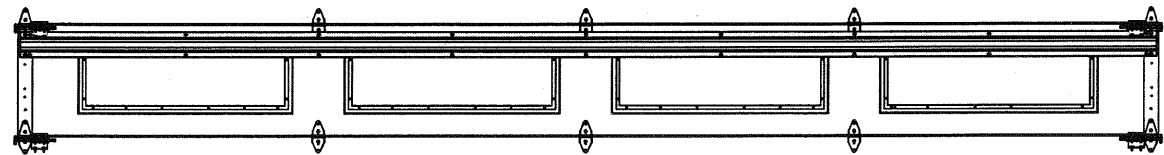
**AMARR MODEL #1380**

SIZE	DRAWN BY	RLR	DATE	12/08/14	DRAWING NUMBER
B	CHECKED BY	RLR	DATE	12/08/14	IBC-1818-136-26

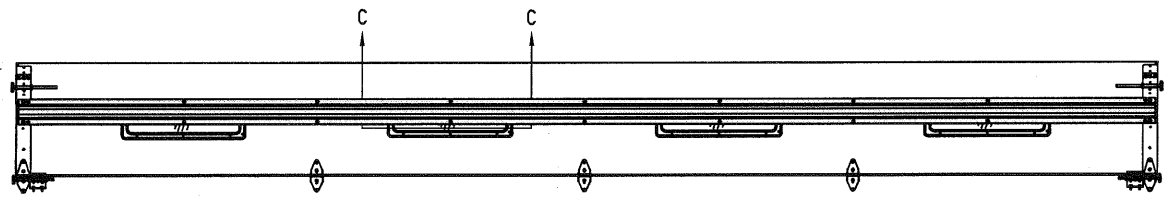
SHEET 3 OF 4



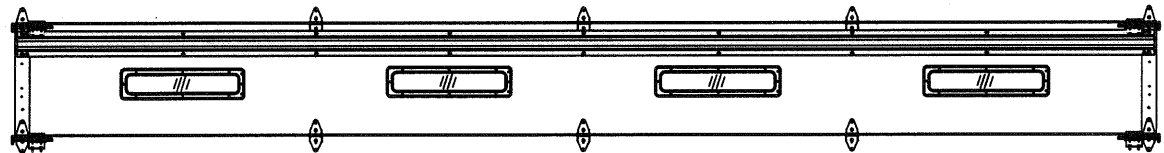
OPTIONAL GLAZED TOP SECTION W/ LONG PANEL WINDOWS AND STRUT LAYOUT  
N.T.S.



OPTIONAL GLAZED INTERMEDIATE SECTION W/ LONG PANEL WINDOWS AND STRUT LAYOUT  
N.T.S.

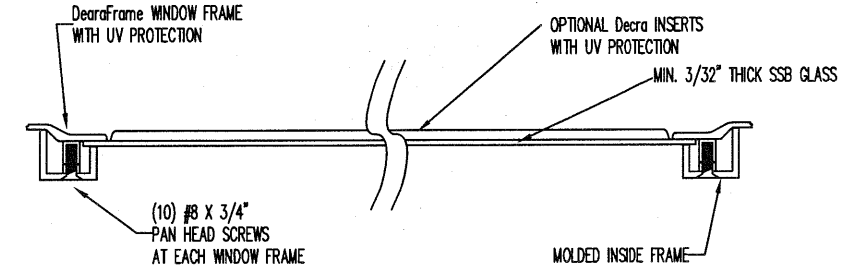


OPTIONAL GLAZED TOP SECTION W/ 24" X 6" WINDOWS AND STRUT LAYOUT  
N.T.S.

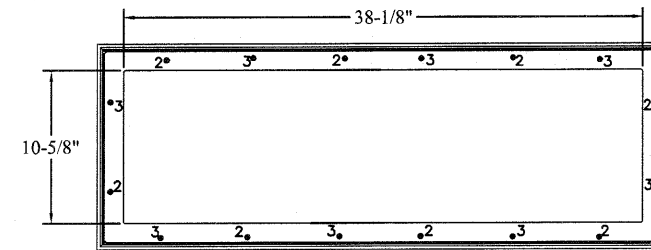


OPTIONAL GLAZED INTERMEDIATE SECTION W/ 24" X 6" WINDOWS AND STRUT LAYOUT  
N.T.S.

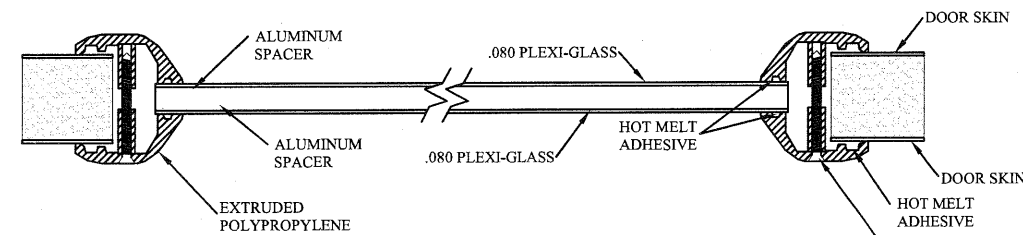
GLAZING NOT AVAILABLE IN WIND-BORNE DEBRIS REGION  
LONG PANEL GLAZING MEETS ASTM E1300-04



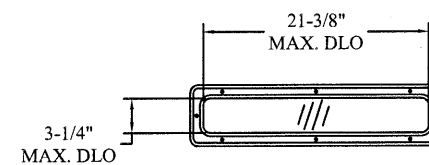
SECTION B-B RESIDENTIAL LONG PANEL WINDOW DETAIL  
N.T.S.



LONG PANEL GLAZING FASTENER DETAIL  
N.T.S.



SECTION C-C 24" X 6" WINDOW DETAIL W/ .080 PLEXI-GLASS  
N.T.S.



24" X 6" DAY LIGHT OPENING AND FASTENER DETAIL  
N.T.S.

REV	DESCRIPTION OF REVISIONS	DATE	BY
	MAX SIZE 18'2" x 14'		
	DESIGN LOADS +25.1 PSF -28.4 PSF		
	TEST LOADS +37.7 PSF -42.6 PSF		

Thomas L. Shelmerdine, PE (TX PE #85829)  
 Structural Solutions, PA (TX Firm #F-004063)

5921-G W. Friendly Ave., Greensboro, NC 27410

**ENTRE//MATIC**

165 CARRIAGE COURT WINSTON-SALEM, N.C. 27105

**AMARR MODEL #1380**

SIZE	DRAWN BY	RLR	DATE	12/08/14	DRAWING NUMBER
B	CHECKED BY	RLR	DATE	12/08/14	IBC-1818-136-26

SHEET 4 OF 4