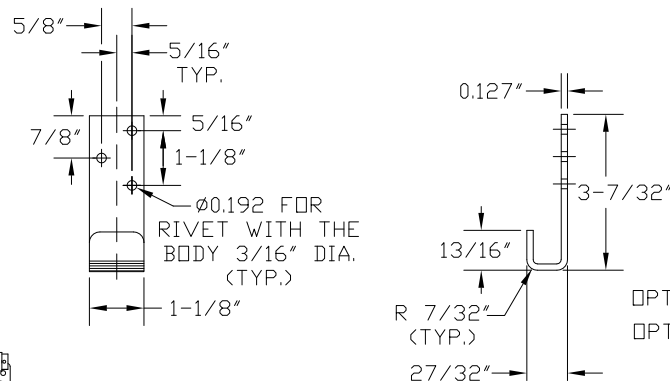
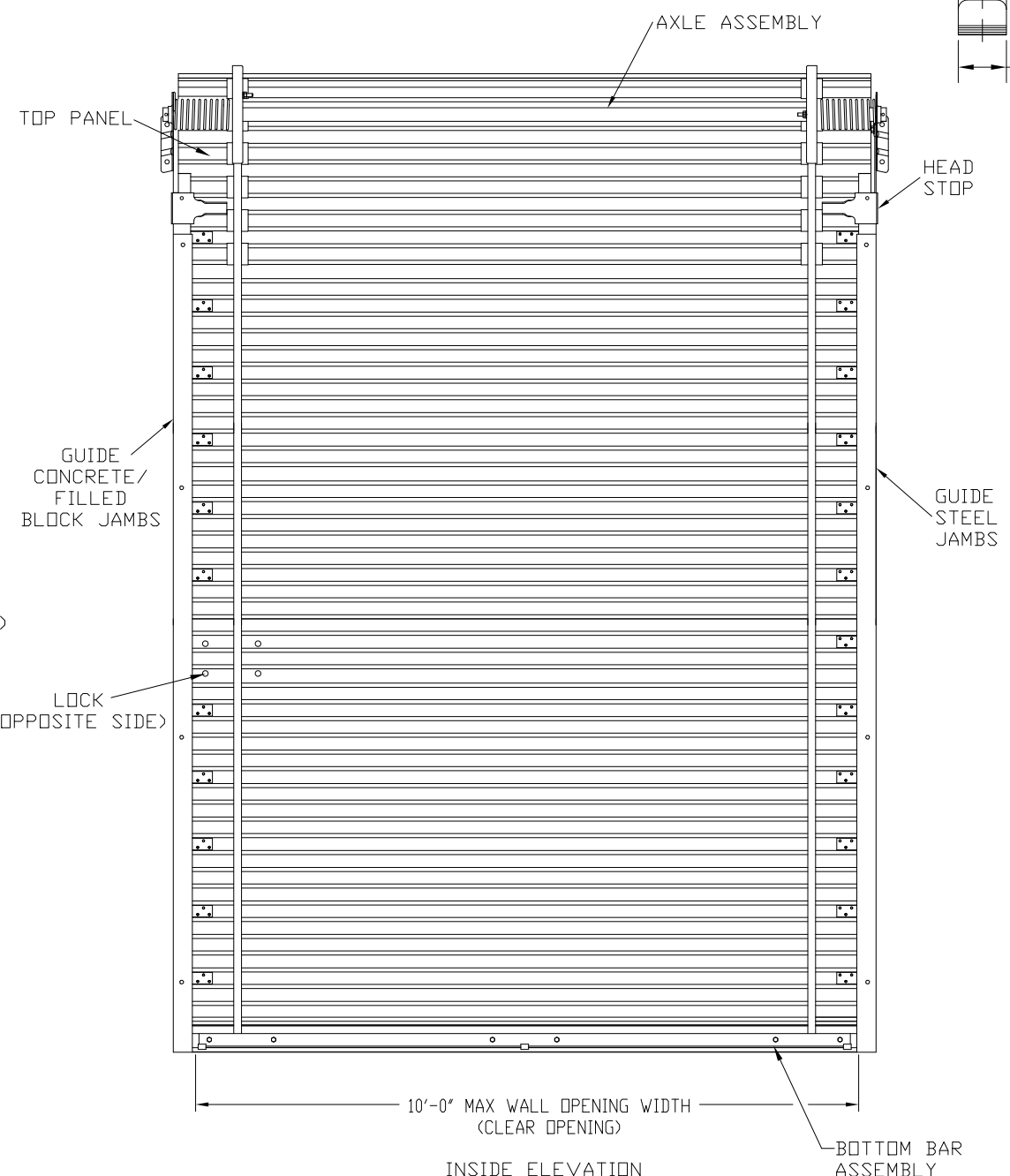
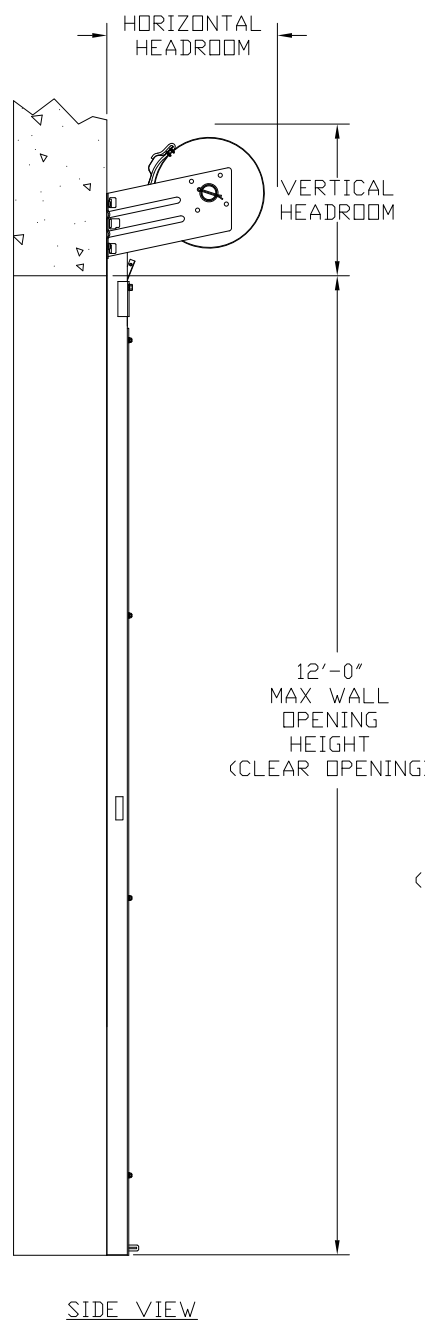


REVISIONS

REV	DESCRIPTION	DATE	APPROVAL
-	RELEASE PER DRN		
1	CERTIFICATION UPDATE	6-6-06	H.B.
2	CERTIFICATION UPDATE	8-19-08	B.A.
3	REMOVED CODE REFERENCE IN NOTE	2-21-12	B.A.
4	MODIFIED FOR TDI	12-19-13	B.A.
5	NOTE ADD: IRC/IBC 2018 COMPLIANCE	8-3-22	B.D.A.

MINIMUM HEADROOM DIMENSIONS

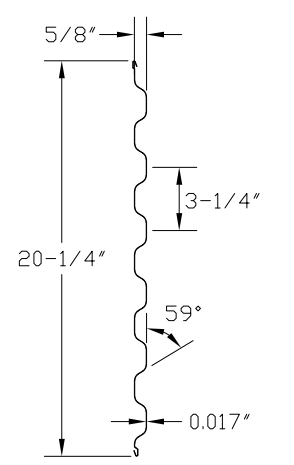
OPENING HEIGHT	THRU 7'-4"	OVER 7'-4" THRU 8'-8"	OVER 8'-8" THRU 10'-0"
VERTICAL HEADROOM	15-1/2"	16"	18"
HORIZONTAL HEADROOM	17-1/2"	18"	19"



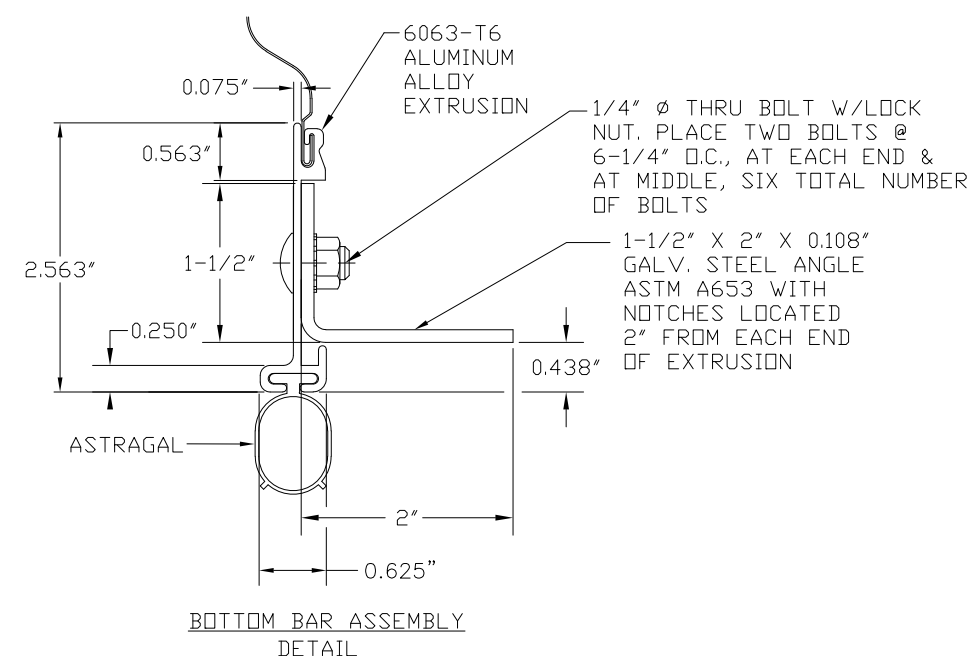
EACH WINDLOCK IS ATTACHED TO CURTAIN WITH THREE STEEL RIVETS WITH THE BODY 3/16" DIA.

OPTION 1: THE WINDLOCK SHOWN WAS TESTED.
OPTION 2: THE SAME WINDLOCK WITH A GUSSET MAY ALSO BE USED.

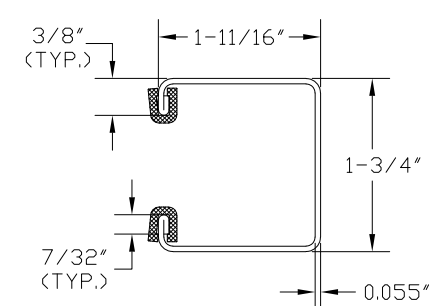
ASTM A653 GALVANIZED CS TYPE B
WINDLOCK DETAIL



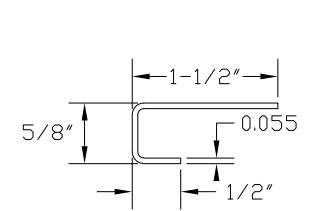
ASTM A653 GRADE 80 WITH FULL COAT OF PRIMER AND BAKED POLYESTER FINISH COAT
TYPICAL PANEL (26 GA.) DETAIL



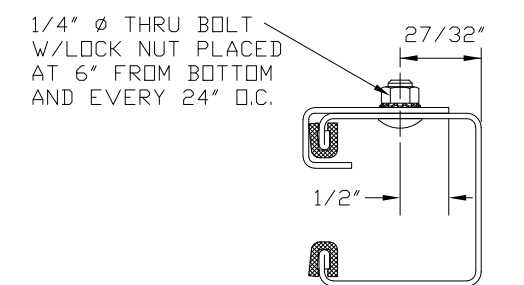
BOTTOM BAR ASSEMBLY DETAIL



ASTM A653 GALVANIZED CS TYPE B
GUIDE DETAIL



ASTM A653 GALVANIZED CS TYPE B
WINDBAR DETAIL



GUIDE-WINDBAR ASSEMBLY

JOHN E. SCATES, P.E.
2560 King Arthur Blvd, Ste 124-54
Lewisville, TX 75056

FL PE 51737
TX PE 56308/F-2203

PRINTED COPIES OF THIS DOCUMENT ARE NOT CONSIDERED SIGNED AND SEALED AND THE SIGNATURE MUST BE VERIFIED ON ANY ELECTRONIC COPIES.

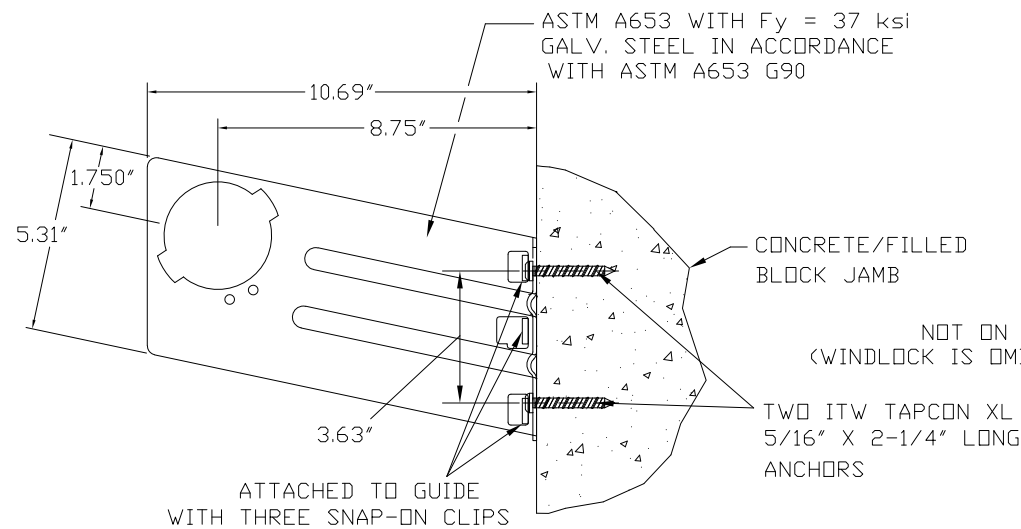
THESE CONFIDENTIAL DOCUMENTS SUBMITTED BY DBCI CONTAIN INFORMATION OF A PROPRIETARY NATURE AND MAY NOT BE REPRODUCED OR USED TO MANUFACTURE ANYTHING IN PART OR IN WHOLE FOR ANY PURPOSE OTHER THAN THAT WHICH IS NECESSARY FOR PREPARATION OF BIDS OR ENGINEERING WITHOUT THE EXPRESS PERMISSION OF DBCI WHICH MAY RECALL DOCUMENTS AT ANY TIME.

PART NUMBER: N/A	
MATERIAL: N/A	
APPLIED FINISH: N/A	
UNIT OF MEASURE: N/A	
APPROVALS	DATE:
DRAWN H.B.	10/15/05
CHECKED H.B.	10/18/05
APPROVED	

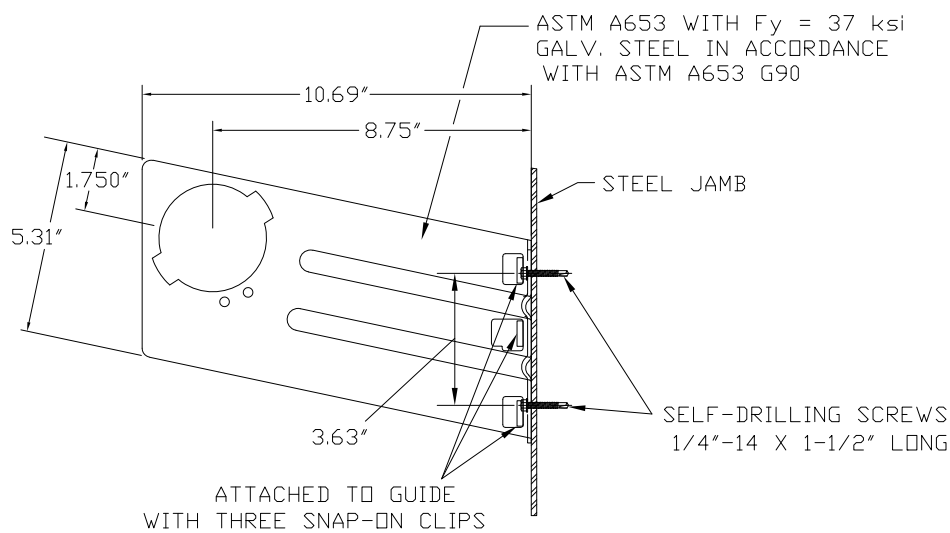
DOORS & BUILDING COMPONENTS
DOUGLASVILLE, GA CHANDLER, AZ HOUSTON, TX
©2000 DBCI ALL RIGHTS RESERVED

26 GA. WIND LOAD MAX. SIZE 10'-0" x 12'-0"
SERIES 690 DOOR ASSEMBLY

SIZE B	DRAWING NUMBER -300-130-0001.01	REV. 5
SCALE: NONE	SHEET 1	OF 2



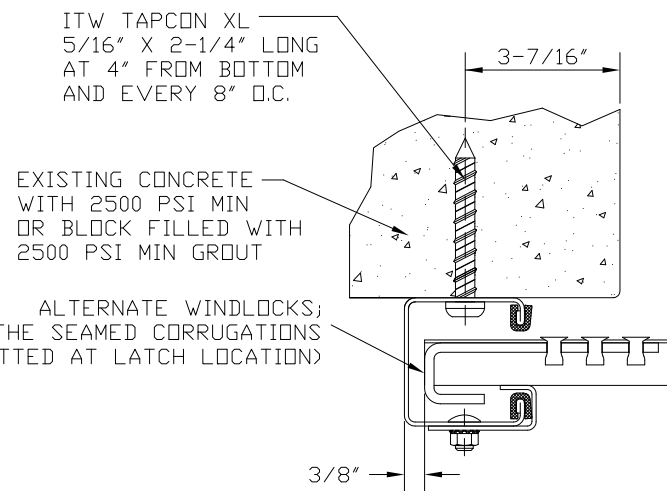
DOOR MOUNTING BRACKET TO MASONRY DETAIL



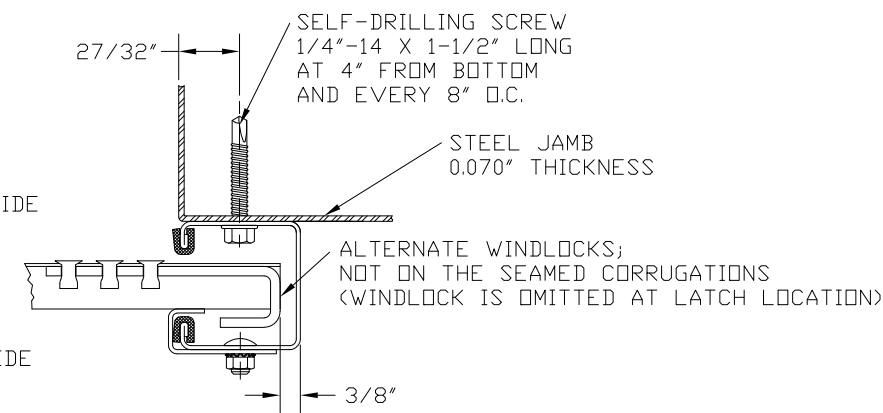
DOOR MOUNTING BRACKET TO STEEL DETAIL

GENERAL NOTES:

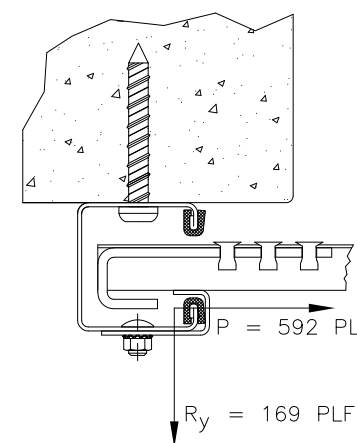
1. THIS DOOR EVALUATED IN ACCORDANCE WITH TEST METHODS ASTM E330-02 AND ANSI/DASMA 108.
2. THIS PRODUCT EVALUATION IS GENERIC. IT DOES NOT INCLUDE INFORMATION PREPARED FOR A SPECIFIC SITE.
3. IT IS THE RESPONSIBILITY OF OTHER, TO VERIFY THE STRUCTURAL CAPACITY OF THE SUBSTRATE (JAMB) TO RESIST THE LOADS IMPOSED BY THE ROLL-UP DOOR.
4. ALL DOOR JAMBS (MASONRY OR STEEL) MUST BE DESIGNED TO RESIST THE FORCES IN SUPERIMPOSED LOAD DIAGRAM.
5. THE DOOR ASSEMBLY SHALL BE INSTALLED IN ACCORDANCE WITH THE MANUFACTURERS INSTALLATION INSTRUCTIONS.
6. COMPLIES WITH IBC/IRC 2018.
7. PROFESSIONAL ENGINEER'S SEAL PROVIDED ONLY FOR VERIFICATION OF WINDLOAD CONSTRUCTION DETAIL



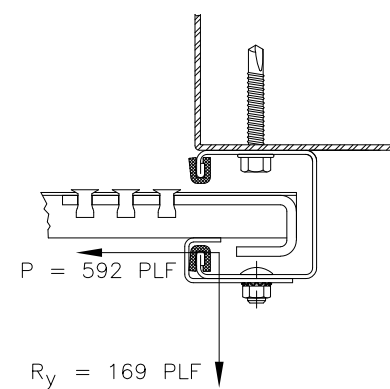
FOR MASONRY JAMBS:
CURTAIN WIDTH=OPENING WIDTH+7 3/4"
CONCRETE/FILLED BLOCK JAMBS
LH GUIDE MOUNT SHOWN



FOR STEEL JAMBS:
CURTAIN WIDTH=OPENING WIDTH+3"
STEEL JAMBS
RH GUIDE MOUNT SHOWN



CONCRETE/FILLED BLOCK JAMBS
LH GUIDE MOUNT SHOWN



STEEL JAMBS
RH GUIDE MOUNT SHOWN

SUPERIMPOSED LOAD DIAGRAM

DOOR SCHEDULE	
DOOR WIDTH	DESIGN PRESSURE (PSF)
</= 4'-0"	+64.2
	-75.0
5'-0"	+55.0
	-64.2
6'-0"	+46.2
	-53.9
7'-0"	+39.8
	-46.5
8'-0"	+34.9
	-40.8
9'-0"	+31.2
	-36.4
10'-0"	+28.2
	-32.9

JOHN E. SCATES, P.E.
2560 King Arthur Blvd, Ste 124-54
Lewisville, TX 75056

FL PE 51737
TX PE 56308/F-2203

PRINTED COPIES OF THIS DOCUMENT ARE NOT
CONSIDERED SIGNED AND SEALED AND THE
SIGNATURE MUST BE VERIFIED ON ANY
ELECTRONIC COPIES.

THESE CONFIDENTIAL DOCUMENTS SUBMITTED BY DBCI CONTAIN INFORMATION OF A PROPRIETARY NATURE AND MAY NOT BE REPRODUCED OR USED TO MANUFACTURE ANYTHING IN PART OR IN WHOLE FOR ANY PURPOSE OTHER THAN THAT WHICH IS NECESSARY FOR PREPARATION OF BIDS OR ENGINEERING WITHOUT THE EXPRESS PERMISSION OF DBCI WHICH MAY RECALL DOCUMENTS AT ANY TIME.

PART NUMBER: N/A	
MATERIAL: N/A	
APPLIED FINISH: N/A	
UNIT OF MEASURE: N/A	
APPROVALS	DATE:
DRAWN H.B.	10/15/05
CHECKED H.B.	10/18/05
APPROVED	



DOORS & BUILDING COMPONENTS
DOUGLASVILLE, GA CHANDLER, AZ HOUSTON, TX
©2000 DBCI ALL RIGHTS RESERVED

26 GA. WIND LOAD MAX. SIZE 10'-0" x 12'-0"

SERIES 690 DOOR ASSEMBLY

SIZE B	DRAWING NUMBER -300-130-0001.01	REV. 5
-----------	------------------------------------	-----------

SCALE: NONE SHEET 2 OF 2