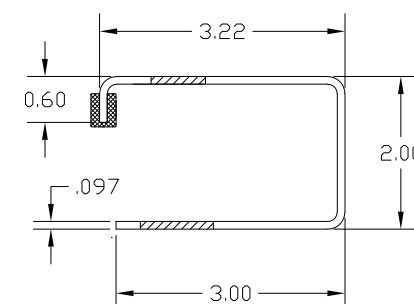


REVISIONS

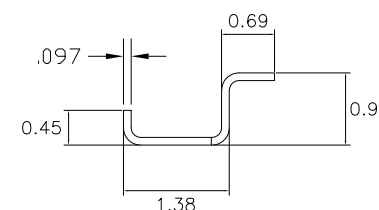
REV	DESCRIPTION	DATE	APPROVAL
-	RELEASE PER DRN		
1	MODIFIED FOR TDI	1-31-14	B.A.
2	NOTE ADD IBC/IRC 2018 COMPLIANCE	8-3-22	B.D.A.

MINIMUM HEADROOM DIMENSIONS

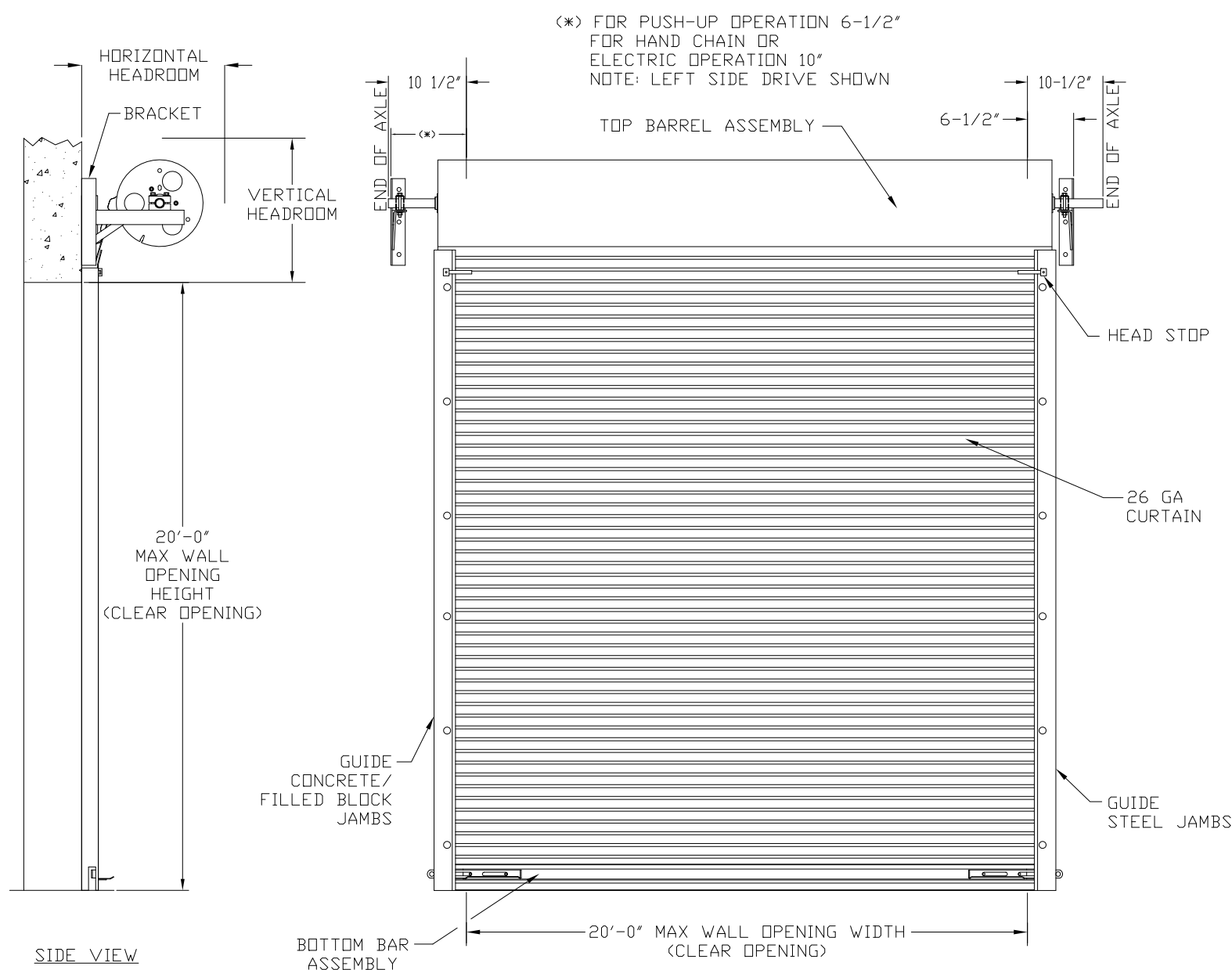
OPENING HEIGHT	THRU 8'-0"	OVER 8'-0" THRU 10'-0"	OVER 10'-0" THRU 14'-0"	OVER 14'-0" THRU 16'-0"	OVER 16'-0" THRU 18'-0"	OVER 18'-0" THRU 20'-0"
VERTICAL HEADROOM	18"	20"	21"	22"	23"	24"
HORIZONTAL HEADROOM	19"	21"	22"	23"	24"	25"



ASTM A653 GALVANIZED CS TYPE B GUIDE DETAIL

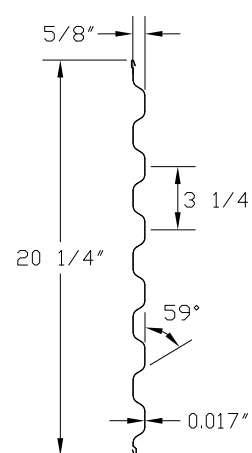


ASTM A653 GALVANIZED CS TYPE B WINDBAR DETAIL



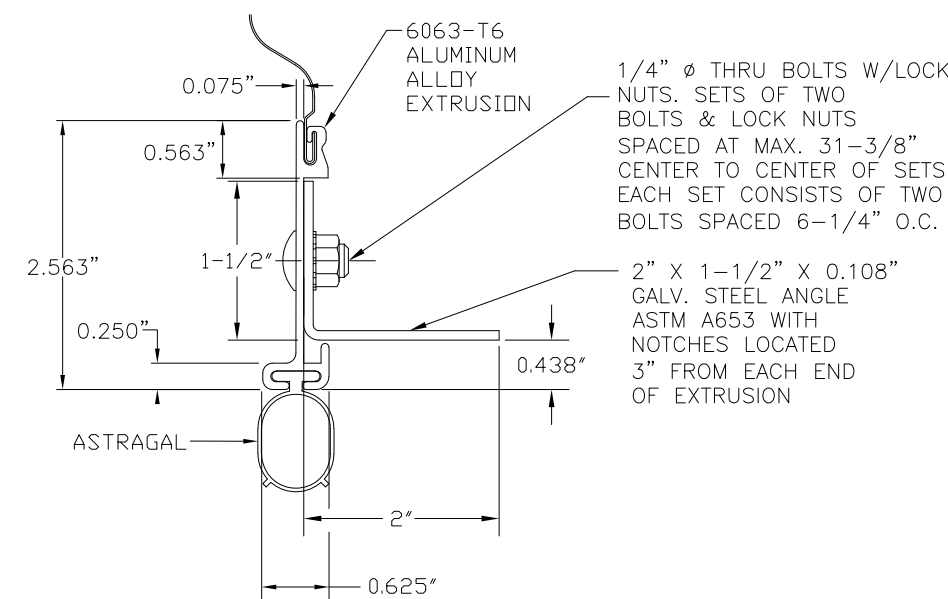
SIDE VIEW

INSIDE ELEVATION

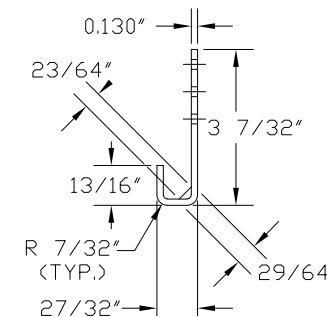
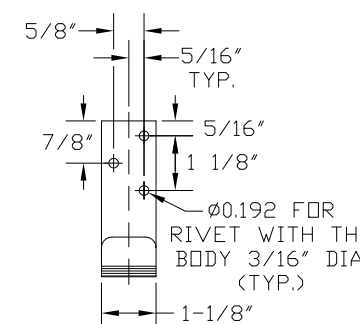


ASTM A653 GRADE 80 WITH FULL COAT OF PRIMER AND BAKED POLYESTER FINISH COAT

TYPICAL PANEL (26 GA.) DETAIL

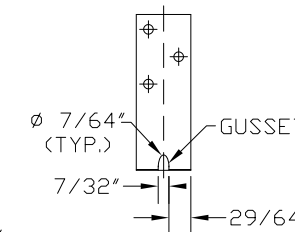


BOTTOM BAR ASSEMBLY DETAIL



ASTM A653 GALVANIZED CS TYPE B

WINDLOCK DETAIL



EACH WINDLOCK IS ATTACHED TO CURTAIN WITH THREE STEEL RIVETS WITH THE BODY 3/16" DIA.

JOHN E. SCATES, P.E.
2560 King Arthur Blvd, Ste 124-54
Lewisville, TX 75056

FL PE 51737
TX PE 56308/F-2203

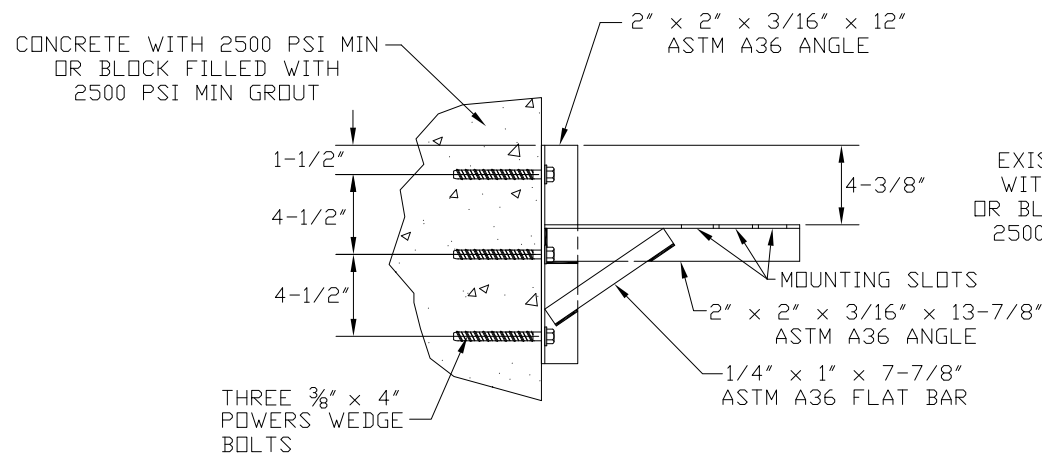
PRINTED COPIES OF THIS DOCUMENT ARE NOT CONSIDERED SIGNED AND SEALED AND THE SIGNATURE MUST BE VERIFIED ON ANY ELECTRONIC COPIES.

THESE CONFIDENTIAL DOCUMENTS SUBMITTED BY DBCI CONTAIN INFORMATION OF A PROPRIETARY NATURE AND MAY NOT BE REPRODUCED OR USED TO MANUFACTURE ANYTHING IN PART OR IN WHOLE FOR ANY PURPOSE OTHER THAN THAT WHICH IS NECESSARY FOR PREPARATION OF BIDS OR ENGINEERING WITHOUT THE EXPRESS PERMISSION OF DBCI WHICH MAY RECALL DOCUMENTS AT ANY TIME.

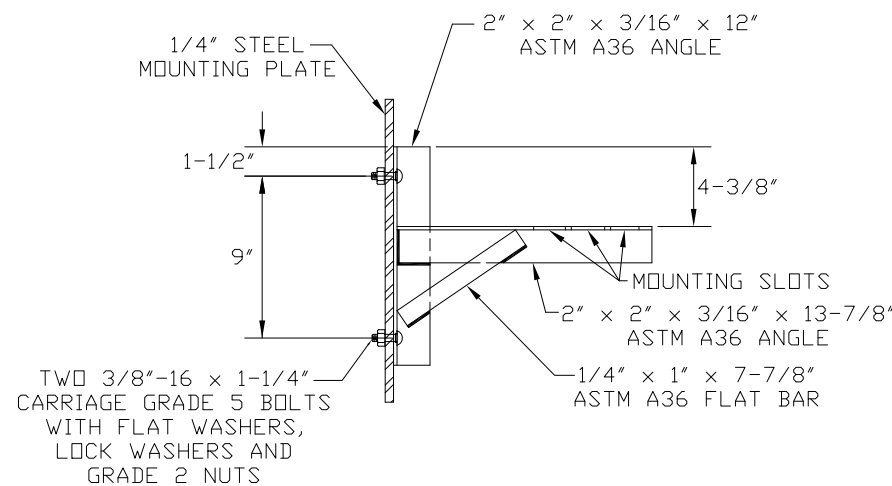
PART NUMBER: N/A	
MATERIAL: N/A	
APPLIED FINISH: N/A	
UNIT OF MEASURE: N/A	
APPROVALS	DATE:
DRAWN BRAY ALLEN	11/14/08
CHECKED BRAY ALLEN	11/14/08
APPROVED	

DBCI DOORS & BUILDING COMPONENTS
DOUGLASVILLE, GA CHANDLER, AZ HOUSTON, TX
©2000 DBCI ALL RIGHTS RESERVED

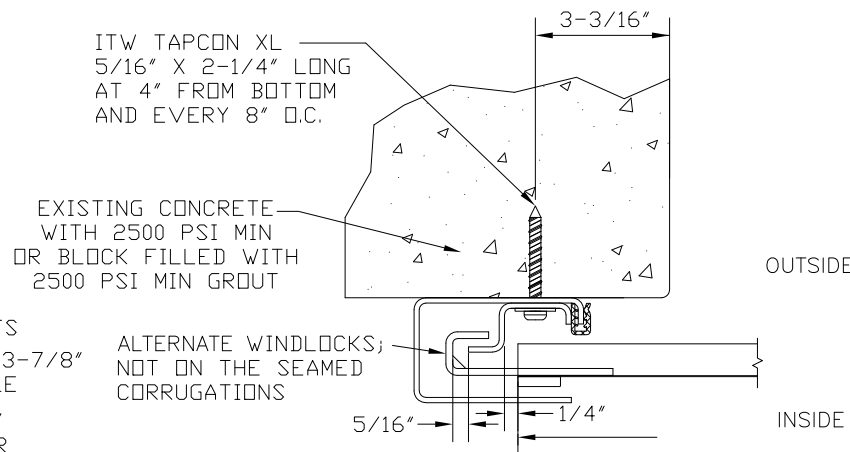
26 GA. WIND LOAD, MAX. SIZE 20'-0" x 20'-0"	
SERIES 5000 DOOR ASSEMBLY	
SIZE B	DRAWING NUMBER -5000-08-0001
SCALE: NONE	SHEET 1 OF 2



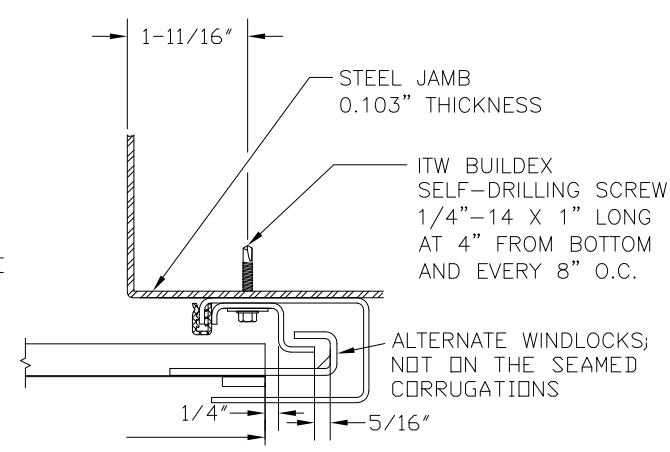
DOOR MOUNTING BRACKET TO MASONRY DETAIL



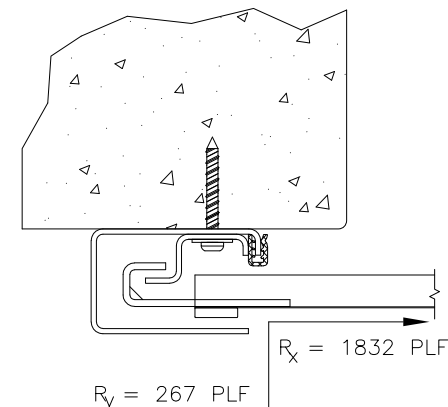
DOOR MOUNTING BRACKET TO STEEL DETAIL



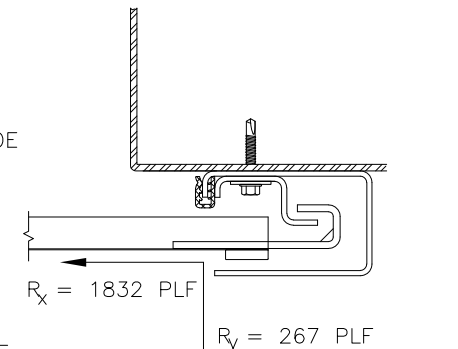
FOR MASONRY JAMBS:
CURTAIN WIDTH=OPENING WIDTH+7"
CONCRETE/FILLED BLOCK JAMBS
LH GUIDE MOUNT SHOWN



FOR STEEL JAMBS:
CURTAIN WIDTH=OPENING WIDTH+4"
STEEL JAMBS
RH GUIDE MOUNT SHOWN



CONCRETE/FILLED BLOCK JAMBS
LH GUIDE MOUNT SHOWN



STEEL JAMBS
RH GUIDE MOUNT SHOWN

SUPERIMPOSED LOAD DIAGRAM

DOOR SCHEDULE

DOOR WIDTH	DESIGN PRESSURE (PSF)
</= 10'-0"	+43.7
	-50.0
11'-0"	+39.9
	-45.7
12'-0"	+36.8
	-42.1
13'-0"	+34.1
	-39.0
14'-0"	+31.7
	-36.3
15'-0"	+29.7
	-34.0
16'-0"	+28.0
	-32.0
17'-0"	+25.4
	-29.1
18'-0"	+23.2
	-26.6
19'-0"	+21.3
	-24.4
20'-0"	+19.7
	-22.6

GENERAL NOTES:

1. THIS DOOR EVALUATED IN ACCORDANCE WITH TEST METHODS ASTM E330-02 AND ANSI/DASMA 108.
2. THIS PRODUCT EVALUATION IS GENERIC. IT DOES NOT INCLUDE INFORMATION PREPARED FOR A SPECIFIC SITE.
3. IT IS THE RESPONSIBILITY OF OTHER, TO VERIFY THE STRUCTURAL CAPACITY OF THE SUBSTRATE (JAMB) TO RESIST THE LOADS IMPOSED BY THE ROLL-UP DOOR.
4. ALL DOOR JAMBS (MASONRY OR STEEL) MUST BE DESIGNED TO RESIST THE FORCES IN SUPERIMPOSED LOAD DIAGRAM.
5. THE DOOR ASSEMBLY SHALL BE INSTALLED IN ACCORDANCE WITH THE MANUFACTURERS INSTALLATION INSTRUCTIONS.
6. COMPLIES WITH IBC/IRC 2018.
7. PROFESSIONAL ENGINEER'S SEAL PROVIDED ONLY FOR VERIFICATION OF WINDLOAD CONSTRUCTION DETAIL.

JOHN E. SCATES, P.E.
2560 King Arthur Blvd, Ste 124-54
Lewisville, TX 75056

FL PE 51737
TX PE 56308/F-2203

PRINTED COPIES OF THIS DOCUMENT ARE NOT
CONSIDERED SIGNED AND SEALED AND THE
SIGNATURE MUST BE VERIFIED ON ANY
ELECTRONIC COPIES.

THESE CONFIDENTIAL DOCUMENTS SUBMITTED BY DBCI CONTAIN INFORMATION OF A PROPRIETARY NATURE AND MAY NOT BE REPRODUCED OR USED TO MANUFACTURE ANYTHING IN PART OR IN WHOLE FOR ANY PURPOSE OTHER THAN THAT WHICH IS NECESSARY FOR PREPARATION OF BIDS OR ENGINEERING WITHOUT THE EXPRESS PERMISSION OF DBCI WHICH MAY RECALL DOCUMENTS AT ANY TIME.

PART NUMBER: N/A	
MATERIAL: N/A	
APPLIED FINISH: N/A	
UNIT OF MEASURE: N/A	
APPROVALS	DATE:
DRAWN BRAY ALLEN	11/14/08
CHECKED BRAY ALLEN	11/14/08
APPROVED	

DBCI DOORS & BUILDING COMPONENTS
DOUGLASVILLE, GA CHANDLER, AZ HOUSTON, TX
©2000 DBCI ALL RIGHTS RESERVED

26 GA. WIND LOAD, MAX. SIZE 20'-0" x 20'-0"

SERIES 5000 DOOR ASSEMBLY

SIZE B	DRAWING NUMBER -5000-08-0001	REV. 2
SCALE: NONE	SHEET 2	OF 2