

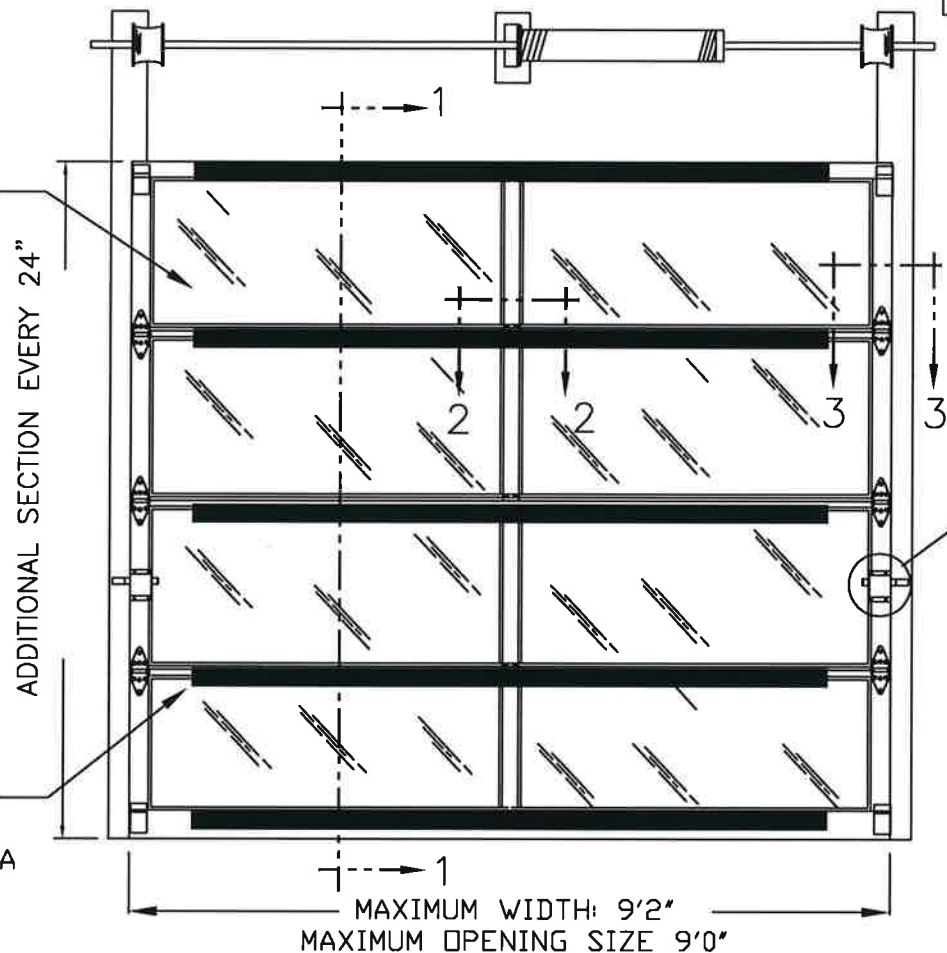
BRAND	MODEL
CLOPAY	904, 904U, AX, AXU
IDEAL	C4AL, C4ALU

THIS PRODUCT COMPLIES WITH THE 2018 IBC/IRC.

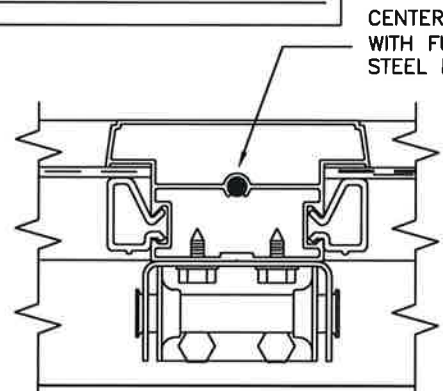
SHEET:
1 OF 2

REVISIONS					DESCRIPTION
REV. NO.	ZONE:	DATE:	ECN NO.	APPVD:	
00		10/22		JDW	INITIAL RELEASE

DSB LITES OR BETTER, ANNEALED OR TEMPERED. INSULATED GLAZING SHALL CONSIST OF 2 ANNEALED OR TEMPERED DSB LITES. MAX DLO 47.625" X 19.5".

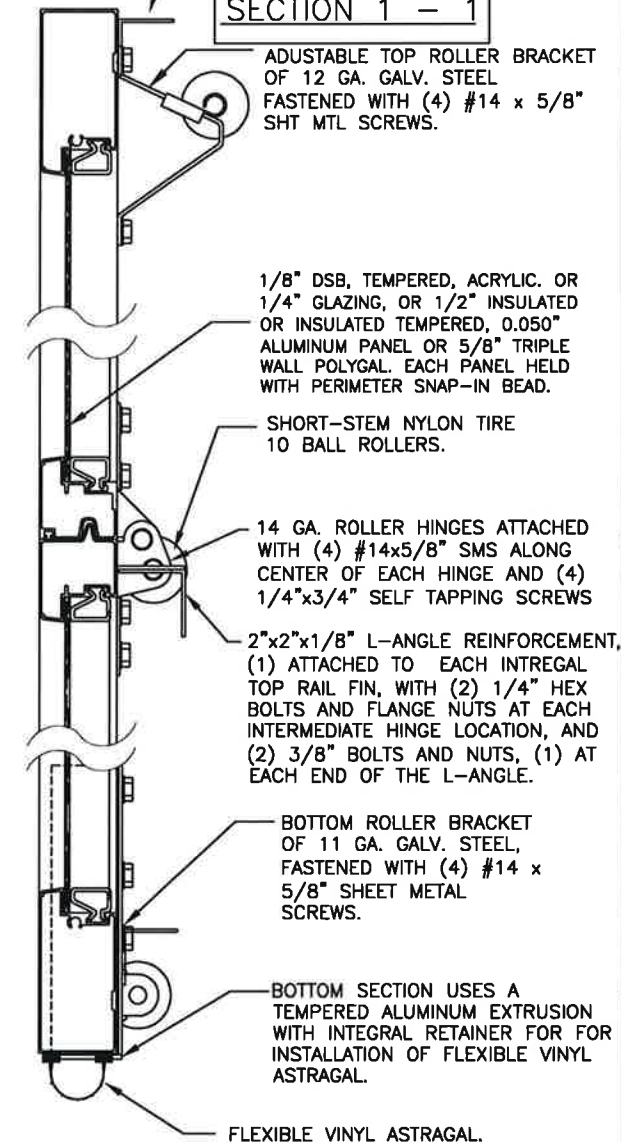


SECTION 2 - 2



CENTER STILES FASTENED TO RAILS WITH FULL LENGTH 1/4" DIA. THREADED STEEL RODS AND FLANGE NUTS.

SECTION 1 - 1



ADJUSTABLE TOP ROLLER BRACKET OF 12 GA. GALV. STEEL FASTENED WITH (4) #14 x 5/8" SHT MTL SCREWS.

1/8" DSB, TEMPERED, ACRYLIC, OR 1/4" GLAZING, OR 1/2" INSULATED OR INSULATED TEMPERED, 0.050" ALUMINUM PANEL OR 5/8" TRIPLE WALL POLYGL. EACH PANEL HELD WITH PERIMETER SNAP-IN BEAD.

SHORT-STEM NYLON TIRE 10 BALL ROLLERS.

14 GA. ROLLER HINGES ATTACHED WITH (4) #14x5/8" SMS ALONG CENTER OF EACH HINGE AND (4) 1/4"x3/4" SELF TAPPING SCREWS

REINFORCEMENT:
2"x2"x1/8" L-ANGLE ALUMINUM 6063-T5

2"x2"x1/8" L-ANGLE REINFORCEMENT, (1) ATTACHED TO EACH INTEGRAL TOP RAIL FIN, WITH (2) 1/4" HEX BOLTS AND FLANGE NUTS AT EACH INTERMEDIATE HINGE LOCATION, AND (2) 3/8" BOLTS AND NUTS, (1) AT EACH END OF THE L-ANGLE.

BOTTOM ROLLER BRACKET OF 11 GA. GALV. STEEL, FASTENED WITH (4) #14 x 5/8" SHEET METAL SCREWS.

BOTTOM SECTION USES A TEMPERED ALUMINUM EXTRUSION WITH INTEGRAL RETAINER FOR FOR INSTALLATION OF FLEXIBLE VINYL ASTRAGAL.

FLEXIBLE VINYL ASTRAGAL.

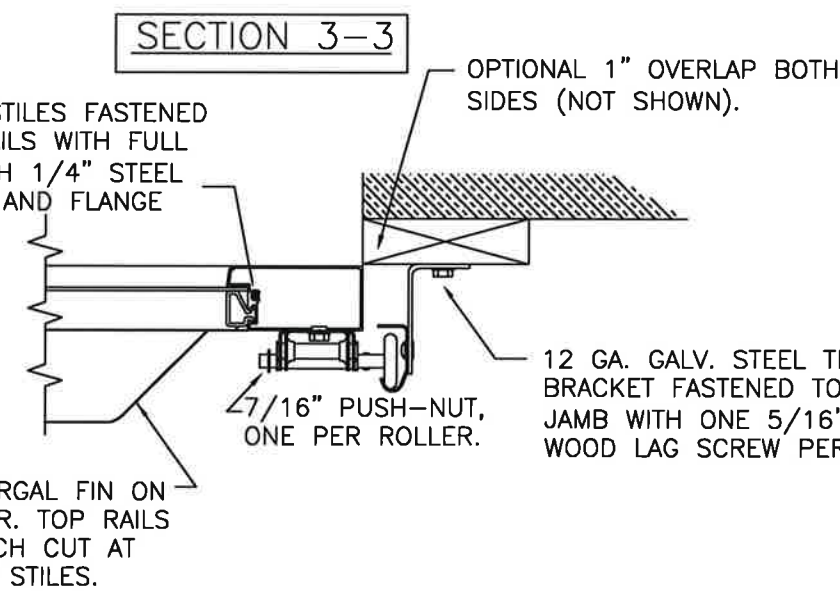
DESIGN LOADS: +40.0, -44.0 PSF
TEST LOADS: +60.0, -66.0 PSF

CENTER HINGES ATTACHED TO INTERM. BOTTOM RAIL WITH (2) #14x5/8" SMS AND TO FIN ON INTERM. TOP RAIL WITH (2) 1/4"-20x1" HEX HEAD MACHINE SCREWS AND NUTS.

SECTIONS PER DOOR HEIGHT	
UP TO 6'0"	3
FROM 6'1" TO 8'0"	4
FROM 8'1" TO 10'0"	5
FROM 10'1" TO 12'0"	6
FROM 12'1" TO 14'0"	7
FROM 14'1" TO 16'0"	8
FROM 16'1" TO 18'0"	9
FROM 18'1" TO 20'0"	10

DOORS UP TO 4'8" SHALL HAVE (1) PANEL; DOORS 4'9" TO 9'2" SHALL HAVE AT LEAST (2) PANELS PER SECTION.

MODEL 904 (6063-T5 ALUMINUM):
TOP RAIL MIN THK 0.075"
STD END STILE MIN THICK 0.075"
STD BTM RAIL MIN THK 0.075"
CENTER STILE PMIN THK 0.075"
INTER. TOP RAIL MIN THK 0.062" W/ 0.100" FIN
INTER. BOTTOM RAIL MIN THK 0.062"

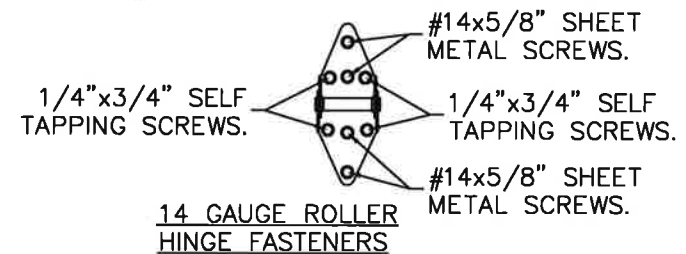


END STILES FASTENED TO RAILS WITH FULL LENGTH 1/4" STEEL RODS AND FLANGE NUTS.

OPTIONAL 1" OVERLAP BOTH SIDES (NOT SHOWN).

12 GA. GALV. STEEL TRACK BRACKET FASTENED TO WOOD JAMB WITH ONE 5/16"x1-5/8" WOOD LAG SCREW PER BRACKET.

INTERGAL FIN ON INTER. TOP RAILS NOTCH CUT AT END STILES.



1/4"x3/4" SELF TAPPING SCREWS.

#14x5/8" SHEET METAL SCREWS.

1/4"x3/4" SELF TAPPING SCREWS.

#14x5/8" SHEET METAL SCREWS.

14 GAUGE ROLLER HINGE FASTENERS



DESIGN ENGINEER:
MARK WESTERFIELD, P.E.
FLORIDA P.E. #48495, NC P.E. #23832, TEXAS P.E. #91513

Clopay CORPORATION	8585 Duke Boulevard Mason, OH 45040 USA Tel. No. 513-770-4800 Fax No. 513-770-4853	CLOPAY WINDLOAD RATING W6
DESCRIPTION: M/N 904 9' WIDE +40/-44 PSF		
DRAWN BY: JDW	DATE: 10/10/22	SCALE:
CHECKED BY:	DATE:	SHEET 1 OF 2
DWG. NO.: 105824	VERSION: TDI	

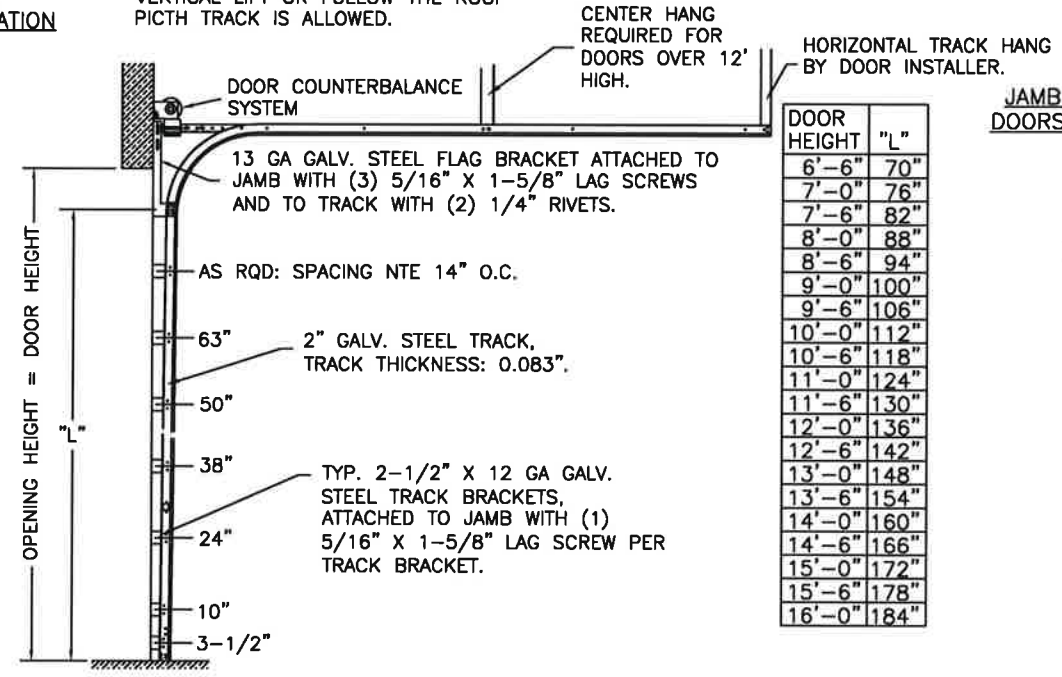
BRAND	MODEL
CLOPAY	904, 904U, AX, AXU
IDEAL	C4AL, C4ALU

SHEET:
2 OF 2

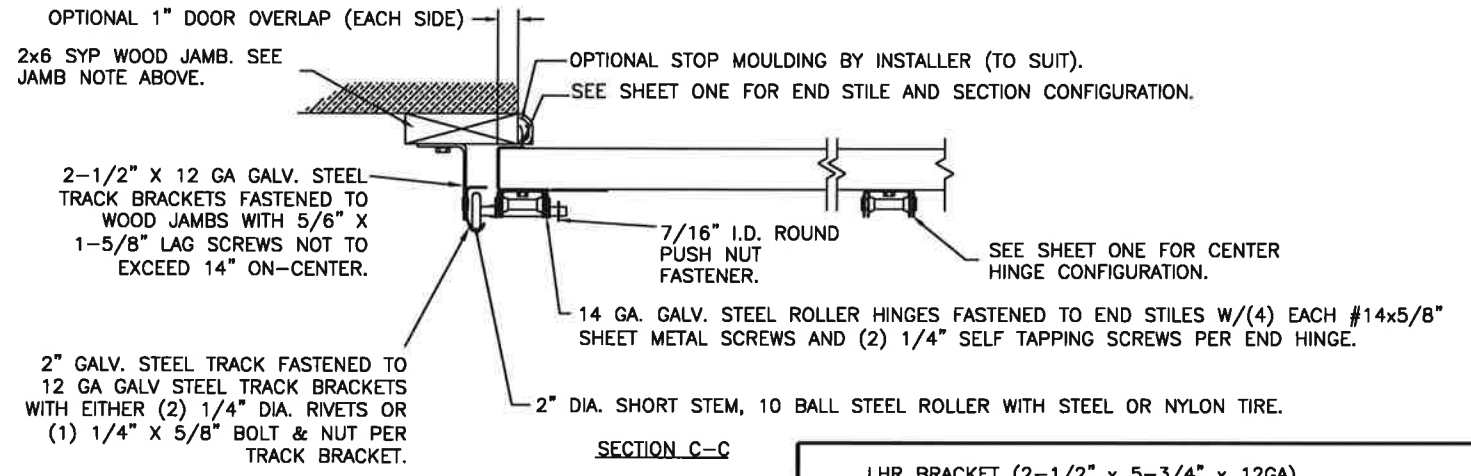
REVISIONS					
REV. NO.	ZONE	DATE	ECN NO.	APPVD.	DESCRIPTION
---	---	---	---	---	SEE PAGE 1 FOR REVISION DETAILS

NOTE: HORIZONTAL TRACK CONFIGURATION ABOVE THE DOOR OPENING DOES NOT AFFECT THE WIND LOAD RATING OF THIS DOOR. STANDARD LIFT, LOW HEADROOM, HIGH LIFT, VERTICAL LIFT OR FOLLOW THE ROOF PITCH TRACK IS ALLOWED.

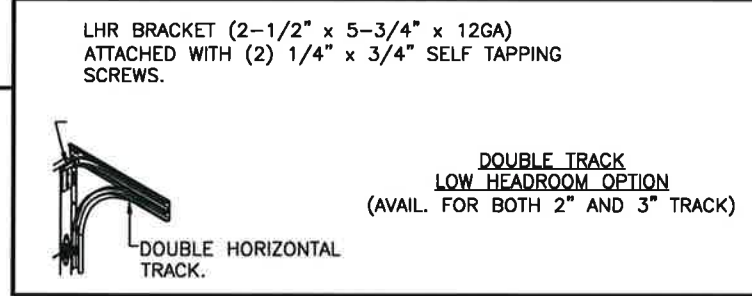
2" TRACK CONFIGURATION



JAMB CONFIGURATION DOORS WITH 2" TRACK.

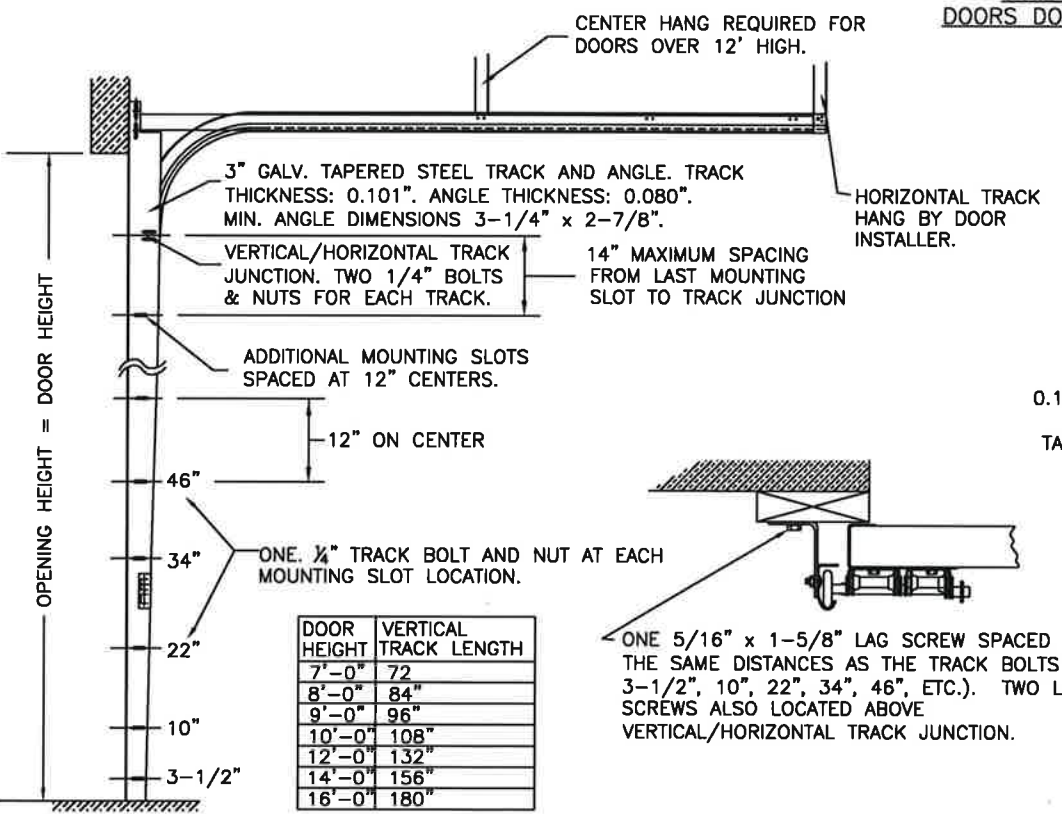


SECTION C-C

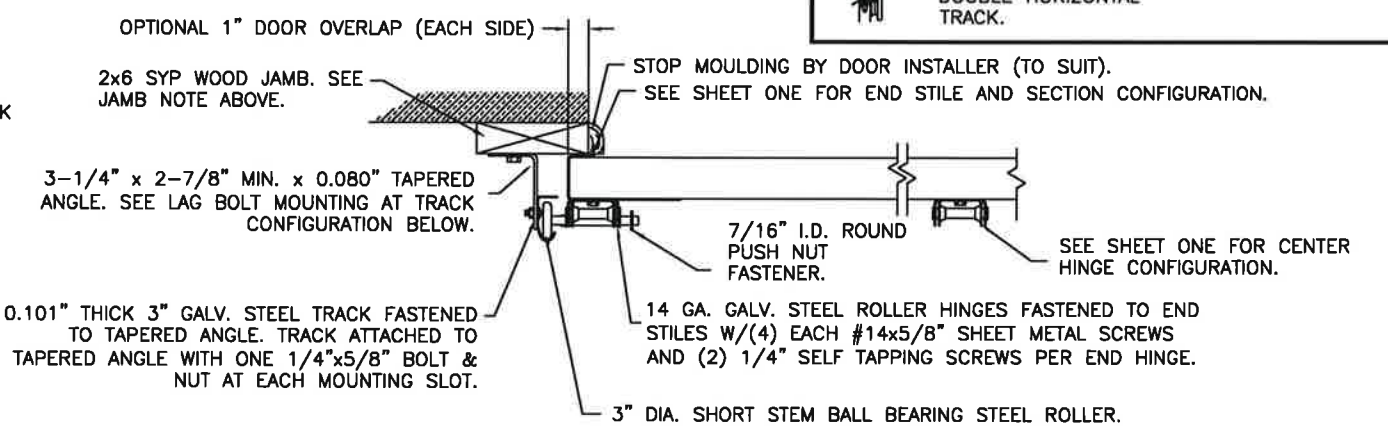


3" TRACK CONFIGURATION

NOTE: HORIZONTAL TRACK CONFIGURATION ABOVE THE DOOR OPENING DOES NOT AFFECT THE WIND LOAD RATING OF THIS DOOR.



JAMB CONFIGURATION DOORS WITH 3" TRACK.



SECTION C-C

DESIGN LOADS: +40.0, -44.0 PSF
TEST LOADS: +60.0, -66.0 PSF



DESIGN ENGINEER:
MARK WESTERFIELD, P.E.
FLORIDA P.E. #48495, NC P.E. #23832, TEXAS P.E. #91513

Clopay Corporation	8585 Duke Boulevard Mason, OH 45040 USA Tel. No. 513-770-4800 Fax No. 513-770-4853	CLOPAY WINDLOAD RATING W6
DESCRIPTION: M/N 904 9' WIDE +40/-44 PSF		
DRAWN BY: JDW	DATE: 10/10/22	SCALE:
CHECKED BY:	DATE:	SHEET 2 OF 2
DWG. NO.: 105824	VERSION: TDI	DWG. SIZE: B