

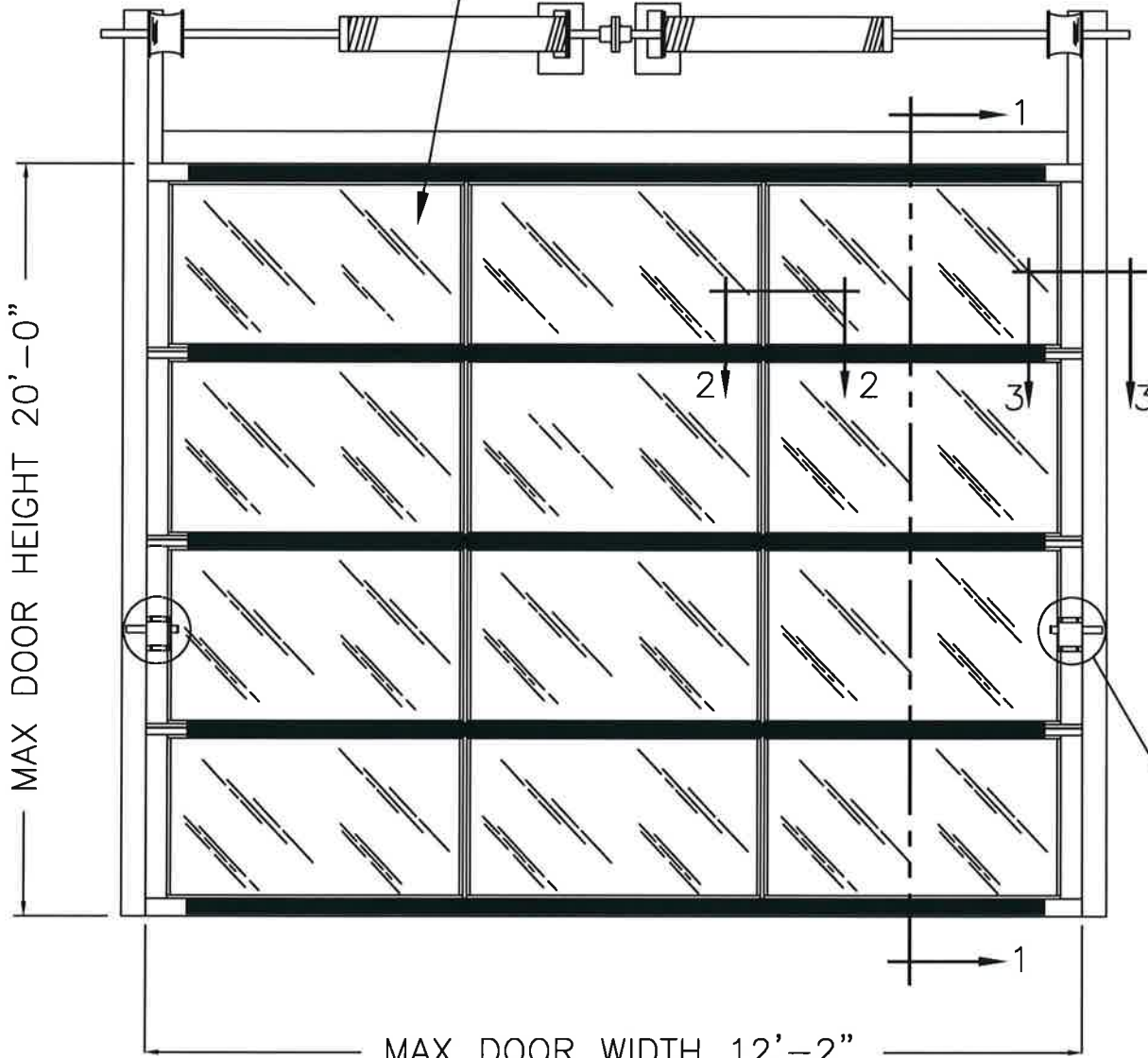
| BRAND | MODEL |
|--------|--------------------|
| CLOPAY | 904, 904U, AX, AXU |
| IDEAL | C4AL, C4ALU |

DSB LITES OR BETTER, ANNEALED OR TEMPERED. INSULATED GLAZING SHALL CONSIST OF 2 ANNEALED OR TEMPERED DSB LITES. MAX DLO 42.75" X 25.825".

MADE FROM 6063-T5 ALUMINUM.

| REVISIONS | | | | | |
|-----------|-------|--------|---------|--------|-------------------------|
| REV. NO. | ZONE: | DATE: | ECN NO. | APPVD: | DESCRIPTION |
| 00 | - | 4/7/22 | - | JDW | RELEASED FOR PRODUCTION |

THIS PRODUCT COMPLIES WITH THE 2018 IBC/IRC.



MAX DOOR HEIGHT 20'-0"

MAX DOOR WIDTH 12'-2"

TWO POINT LOCKING

SEE PAGE 2 FOR DIFFERENT JAMB CONFIGURATIONS

END STILES FASTENED TO RAILS WITH FULL LENGTH 5/16" STEEL RODS AND FLANGE NUTS.

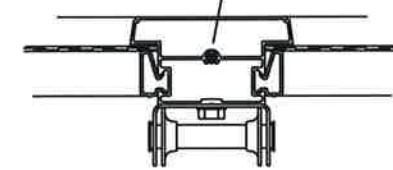
JAMB CONFIGURATION

12 GA. GALV. STEEL TRACK BRACKET FASTENED TO WOOD JAMB WITH ONE 5/16"x1-5/8" WOOD LAG SCREW PER BRACKET.

SECTION 3-3

CENTER STILES FASTENED TO RAILS WITH FULL LENGTH 5/16" STEEL RODS AND FLANGE NUTS.

SECTION 2 - 2



14 GAUGE CENTER HINGES

#14x5/8" SHEET METAL SCREWS.

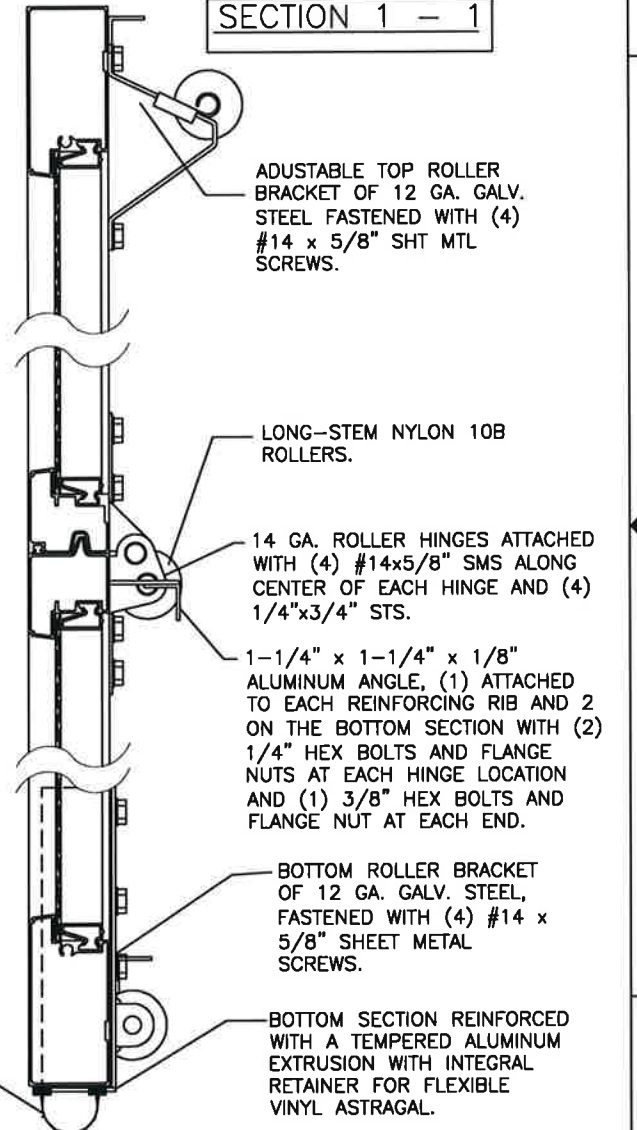
1/4"x3/4" SELF TAPPING SCREWS.

14 GA. END HINGES

14 GA. (MIN.) INTERMEDIATE HINGE

1-1/4" x 1-1/4" x 1/8" ALUMINUM ANGLE ON TOP SECTION AND BOTTOM OF BOTTOM SECTION ATTACHED WITH (1) 1/4"x3/4" SELF-TAPPING SCREW PER STILE LOCATION.

SECTION 1 - 1



ADJUSTABLE TOP ROLLER BRACKET OF 12 GA. GALV. STEEL FASTENED WITH (4) #14 x 5/8" SHT MTL SCREWS.

LONG-STEM NYLON 10B ROLLERS.

14 GA. ROLLER HINGES ATTACHED WITH (4) #14x5/8" SMS ALONG CENTER OF EACH HINGE AND (4) 1/4"x3/4" STS.

1-1/4" x 1-1/4" x 1/8" ALUMINUM ANGLE, (1) ATTACHED TO EACH REINFORCING RIB AND 2 ON THE BOTTOM SECTION WITH (2) 1/4" HEX BOLTS AND FLANGE NUTS AT EACH HINGE LOCATION AND (1) 3/8" HEX BOLTS AND FLANGE NUT AT EACH END.

BOTTOM ROLLER BRACKET OF 12 GA. GALV. STEEL, FASTENED WITH (4) #14 x 5/8" SHEET METAL SCREWS.

BOTTOM SECTION REINFORCED WITH A TEMPERED ALUMINUM EXTRUSION WITH INTEGRAL RETAINER FOR FLEXIBLE VINYL ASTRAGAL.

FLEXIBLE VINYL ASTRAGAL.

DESIGN PRESSURE: +32.0, -32.0 PSF
TEST PRESSURE: +48.0, -48.0 PSF

Handwritten signature and date: 4/21/22



DESIGN ENGINEER:
MARK WESTERFIELD, P.E.
FLORIDA P.E. #48495
NC P.E. #23832, TEXAS P.E. #91513

MANUFACTURING PRODUCT CODE
C-AL2-1F499

NOTICE:
Confidential/Proprietary information of CLOPAY CORPORATION is contained herein and may not be disclosed, used, duplicated, made available, or distributed without its prior consent. Failure to observe this notice may result in liability for any damages and losses resulting therefrom.

Third Angle Projection

Unless Stated Otherwise TOLERANCES are
.0 = ±.031
.00 = ±.015
.000 = ±.005
.0000 = ±.001
Degrees = ±1/2'

Unless Stated Otherwise DIMENSIONS ARE IN INCHES.



8585 Duke Boulevard
Mason, OH 45040 USA
Tel. No. 513-770-4800
Fax No. 513-770-4853

PART NO.: -
CLOPAY WINDLOAD RATING
W5

| | | | |
|--|---------------|--------------|--------|
| DESCRIPTION: M/N 904 12' WIDE DES. +32/-32 PSF | | | |
| DRAWN BY: J. WHEELER | DATE: 4/7/22 | SCALE: NTS | DWG. B |
| CHECKED BY: SH | DATE: CHKD_DT | SHEET 1 OF 2 | SIZE B |
| DWG. NO.: 105622 | | REV. NO. 00 | |

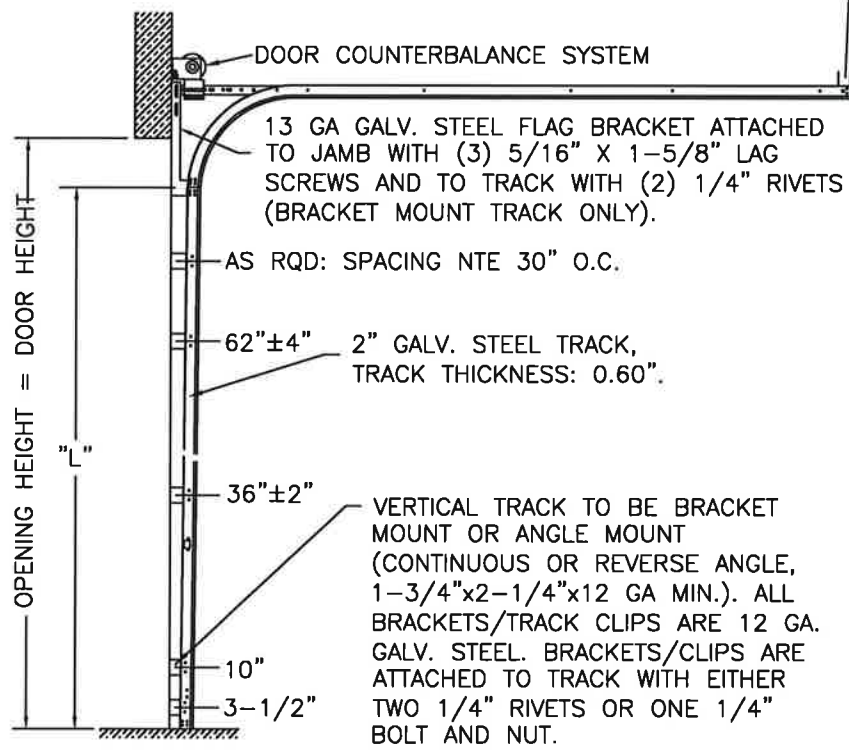
4

3

2

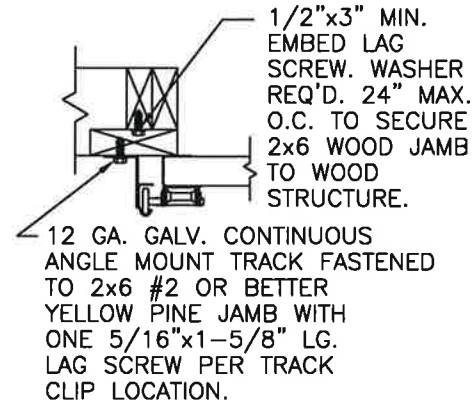
1

2" TRACK CONFIGURATION.



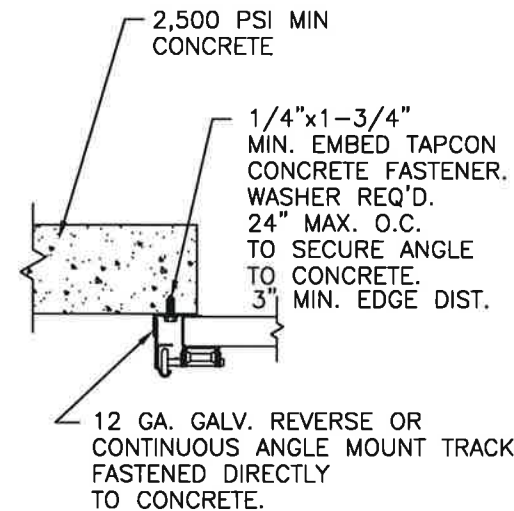
HORIZONTAL TRACK SUPPORT BY DOOR INSTALLER (TO SUIT).

WOOD JAMBS



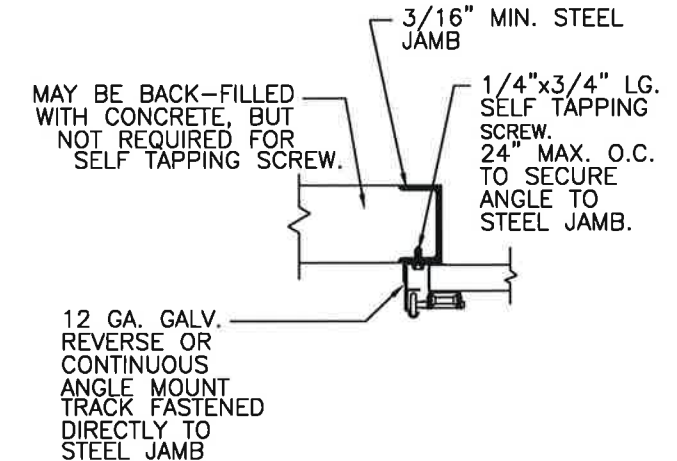
SECTION 3-3

CONCRETE JAMBS



SECTION 3-3

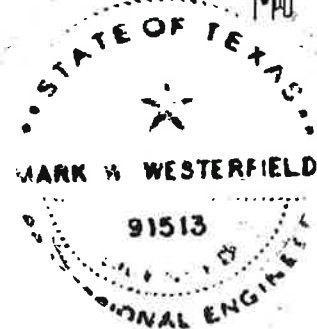
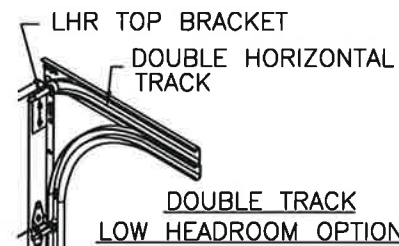
STEEL JAMBS



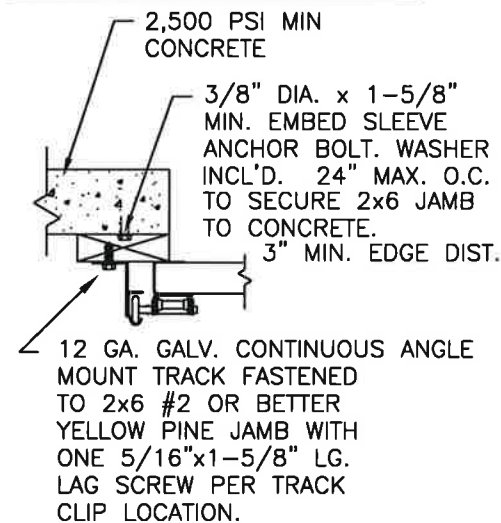
SECTION 3-3

| DOOR HEIGHT | "L" |
|-------------|------|
| 6'-6" | 70" |
| 7'-0" | 76" |
| 7'-6" | 82" |
| 8'-0" | 88" |
| 8'-6" | 94" |
| 9'-0" | 100" |
| 9'-6" | 106" |
| 10'-0" | 112" |
| 10'-6" | 118" |
| 11'-0" | 124" |
| 11'-6" | 130" |
| 12'-0" | 136" |
| 12'-6" | 142" |
| 13'-0" | 148" |
| 13'-6" | 154" |
| 14'-0" | 160" |
| 14'-6" | 166" |
| 15'-0" | 172" |
| 15'-6" | 178" |
| 16'-0" | 184" |
| 16'-6" | 190" |
| 17'-0" | 196" |
| 17'-6" | 202" |
| 18'-0" | 208" |
| 18'-6" | 214" |
| 19'-0" | 220" |
| 19'-6" | 226" |
| 20'-0" | 232" |

NOTE DOUBLE TRACK HEADROOM, HI-LIFT TRACK, FOLLOW-THE-ROOF TRACK, AND VERTICAL LIFT TRACK ARE AVAILABLE OPTIONS. TRACK CONFIGURATION ABOVE THE DOOR OPENING DOES NOT AFFECT THE WIND LOAD RATING.

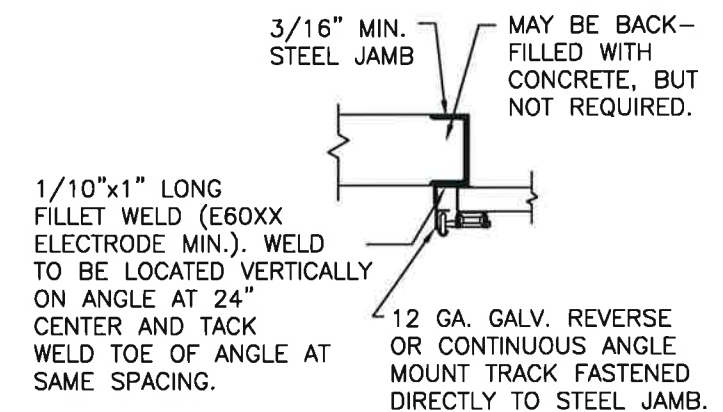


WOOD JAMB ON CONCRETE



SECTION 3-3

STEEL JAMBS



SECTION 3-3

NOTICE: Confidential/Proprietary information of CLOPAY CORPORATION is contained herein and may not be disclosed, used, duplicated, made available, or distributed without its prior consent. Failure to observe this notice may result in liability for any damages and losses resulting therefrom.

Unless Stated Otherwise TOLERANCES are .0 = ±.031 .00 = ±.015 .000 = ±.005 .0000 = ±.001 Degrees = ±1/2'

Third Angle Projection

Unless Stated Otherwise DIMENSIONS ARE IN INCHES.



8585 Duke Boulevard Mason, OH 45040 USA Tel. No. 513-770-4800 Fax No. 513-770-4853

PART NO.: -

CLOPAY WINDLOAD RATING W5

DESCRIPTION: M/N 904 12' WIDE DES. +32/-32 PSF

DRAWN BY: J. WHEELER DATE: 4/7/22 SCALE: NTS DWG. B

CHECKED BY: SH DATE: CHKD_DT SHEET 2 OF 2 SIZE B

DWG. NO.: 105622 REV. NO. 00

DESIGN ENGINEER: MARK WESTERFIELD, P.E. FLORIDA P.E. #48495 NC P.E. #23832, TEXAS P.E. #91513

4

3

2

1