

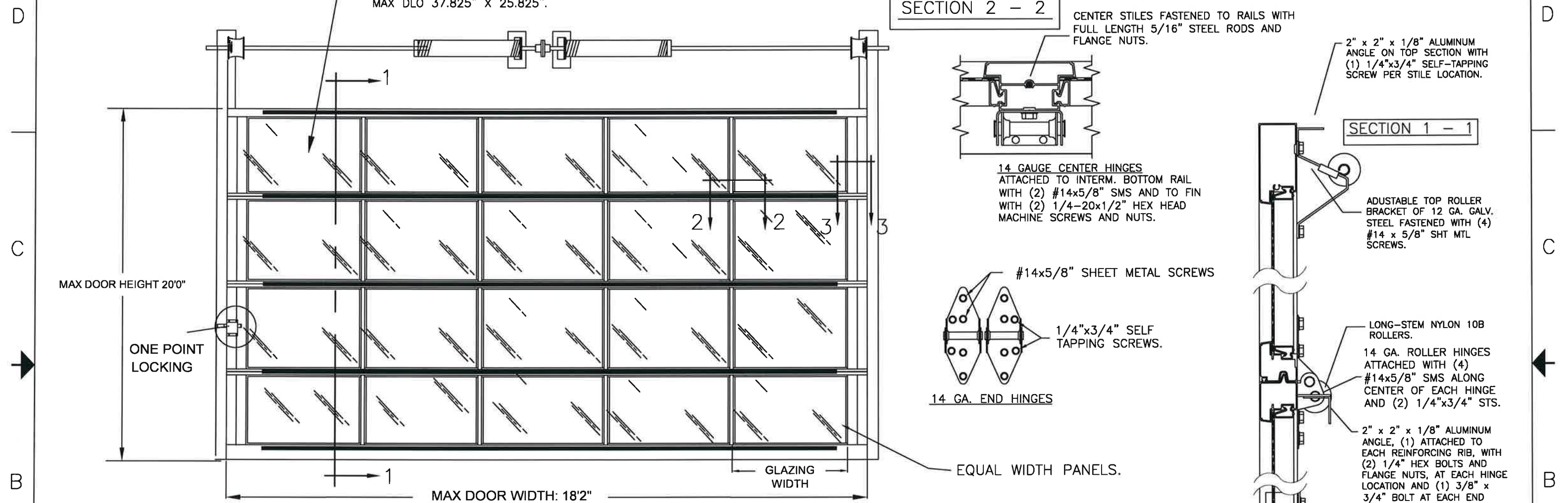
BRAND	MODEL
CLOPAY	904, 904U, AX, AXU
IDEAL	C4AL, C4ALU

THIS PRODUCT COMPLIES WITH THE 2018 IBC/IRC.

REVISIONS					
REV. NO.	ZONE	DATE	ECN NO.	APPVD	DESCRIPTION
00	-	4/7/22	-	JDW	RELEASED FOR PRODUCTION

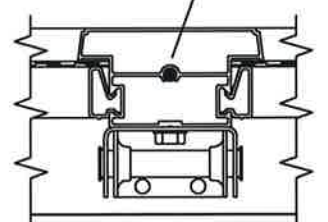
MADE FROM 6063-T5 ALUMINUM.

DSB LITES OR BETTER, ANNEALED OR TEMPERED.
INSULATED GLAZING SHALL CONSIST OF 2
ANNEALED OR TEMPERED DSB LITES.
MAX DLO 37.825" X 25.825".

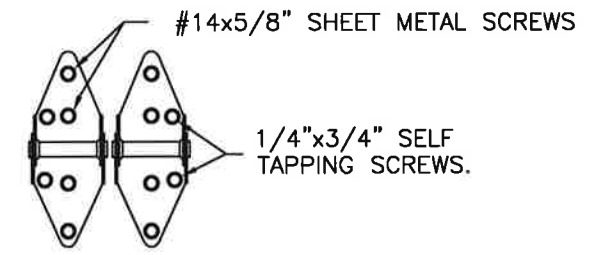


SECTION 2 - 2

CENTER STILES FASTENED TO RAILS WITH FULL LENGTH 5/16" STEEL RODS AND FLANGE NUTS.



14 GAUGE CENTER HINGES ATTACHED TO INTERM. BOTTOM RAIL WITH (2) #14x5/8" SMS AND TO FIN WITH (2) 1/4-20x1/2" HEX HEAD MACHINE SCREWS AND NUTS.

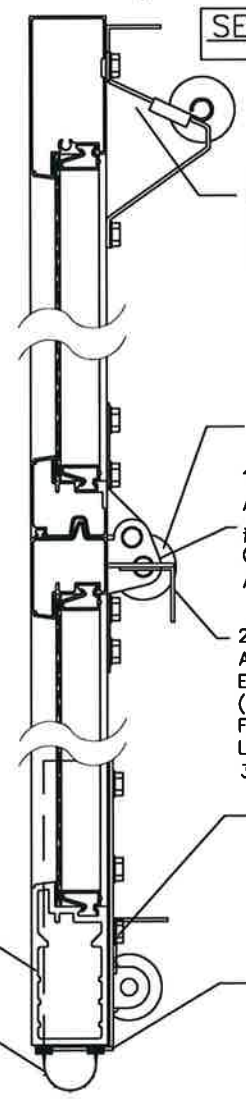


14 GA. END HINGES

EQUAL WIDTH PANELS.

SECTION 1 - 1

2" x 2" x 1/8" ALUMINUM ANGLE ON TOP SECTION WITH (1) 1/4"x3/4" SELF-TAPPING SCREW PER STILE LOCATION.



ADJUSTABLE TOP ROLLER BRACKET OF 12 GA. GALV. STEEL FASTENED WITH (4) #14 x 5/8" SHT MTL SCREWS.

LONG-STEM NYLON 10B ROLLERS.
14 GA. ROLLER HINGES ATTACHED WITH (4) #14x5/8" SMS ALONG CENTER OF EACH HINGE AND (2) 1/4"x3/4" STS.

2" x 2" x 1/8" ALUMINUM ANGLE, (1) ATTACHED TO EACH REINFORCING RIB, WITH (2) 1/4" HEX BOLTS AND FLANGE NUTS, AT EACH HINGE LOCATION AND (1) 3/8" x 3/4" BOLT AT EACH END

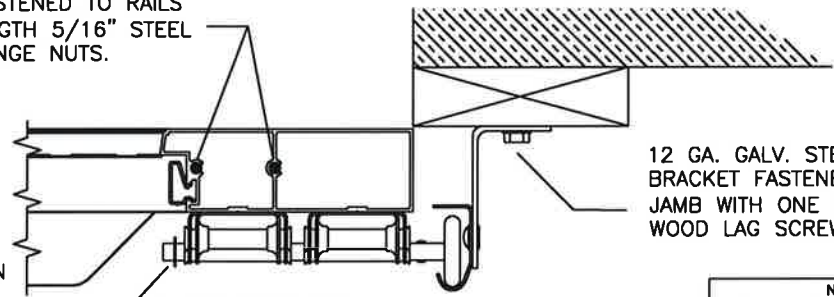
BOTTOM ROLLER BRACKET OF 12 GA. GALV. STEEL, FASTENED WITH (4) #14 x 5/8" SHEET METAL SCREWS.

BOTTOM SECTION REINFORCED WITH A TEMPERED ALUMINUM EXTRUSION WITH INTEGRAL RETAINER FOR FLEXIBLE VINYL ASTRAGAL.

SECTION 3-3

SEE PAGE 2 FOR DIFFERENT JAMB CONFIGURATIONS

END STILES FASTENED TO RAILS WITH FULL LENGTH 5/16" STEEL RODS AND FLANGE NUTS.



12 GA. GALV. STEEL TRACK BRACKET FASTENED TO WOOD JAMB WITH ONE 5/16"x1-5/8" WOOD LAG SCREW PER BRACKET.

REINFORCING FIN ON INTER. TOP RAILS ANGLE CUT AT END STILES.

7/16" PUSH-NUT, ONE PER ROLLER.

DESIGN PRESSURE: +25.0, -25.0 PSF
TEST PRESSURE: +37.5.0, -37.5 PSF

Mark Westerfield 4/21/22

 DESIGN ENGINEER:
 MARK WESTERFIELD, P.E.
 FLORIDA P.E. #48495
 NC P.E. #23832, TEXAS P.E. #91513

MANUFACTURING PRODUCT CODE
C-AL2-1F499

NOTICE: Confidential/Proprietary information of CLOPAY CORPORATION is contained herein and may not be disclosed, used, duplicated, made available, or distributed without its prior consent. Failure to observe this notice may result in liability for any damages and losses resulting therefrom.

Unless Stated Otherwise
TOLERANCES are
 .0 = ±.031
 .00 = ±.015
 .000 = ±.005
 .0000 = ±.001
 Degrees = ±1/2'

Third Angle Projection

Unless Stated Otherwise
 DIMENSIONS ARE IN INCHES.

Clopay CORPORATION
 8585 Duke Boulevard
 Mason, OH 45040 USA
 Tel. No. 513-770-4800
 Fax No. 513-770-4853

PART NO.: -
 CLOPAY WINDLOAD RATING
W4

DESCRIPTION: M/N 904 18' WIDE DES. +25/-25 PSF
 DRAWN BY: J. WHEELER DATE: 4/7/22 SCALE: NTS DWG. SIZE **B**
 CHECKED BY: SH DATE: CHKD_DT SHEET 1 OF 2
 DWG. NO.: 105619 REV. NO. 00

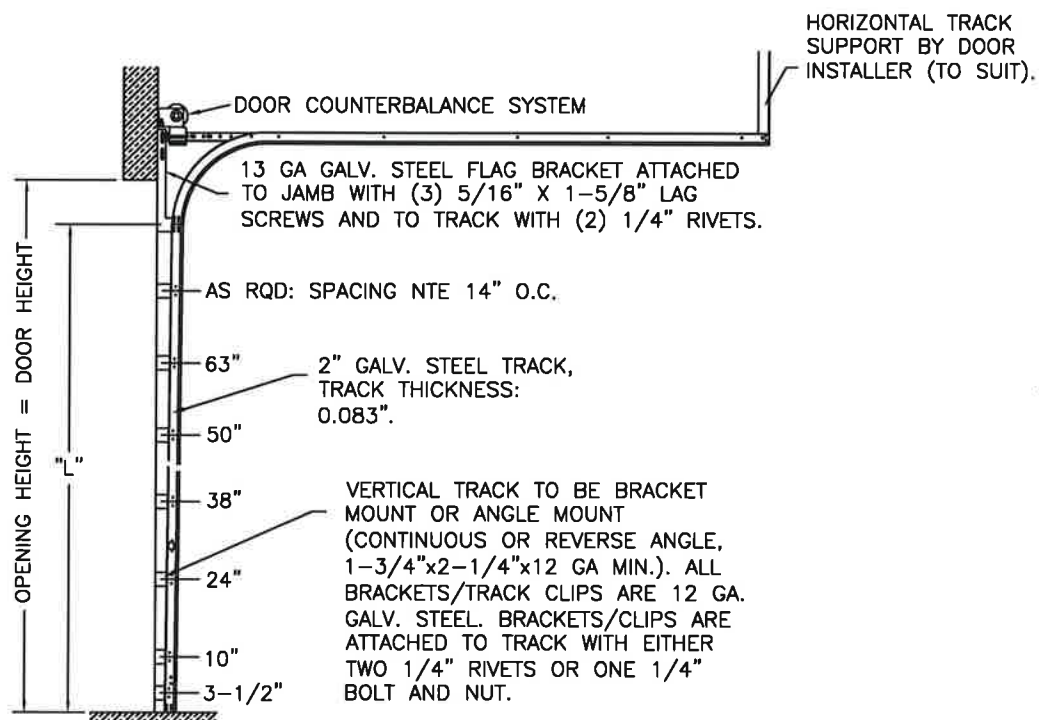
4

3

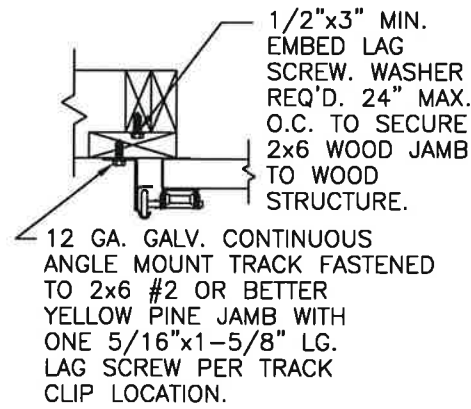
2

1

2" TRACK CONFIGURATION.

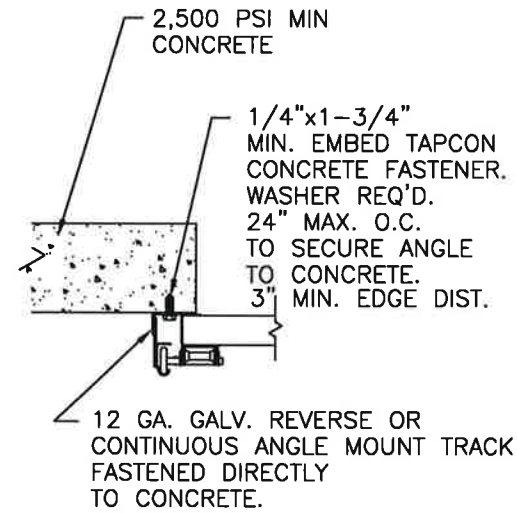


WOOD JAMBS



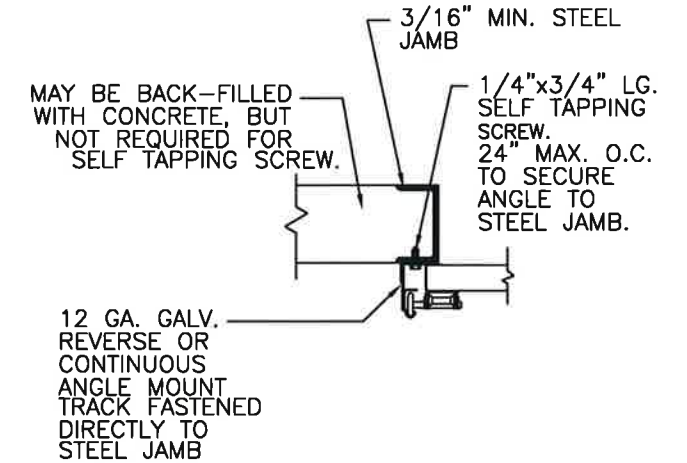
SECTION 3-3

CONCRETE JAMBS



SECTION 3-3

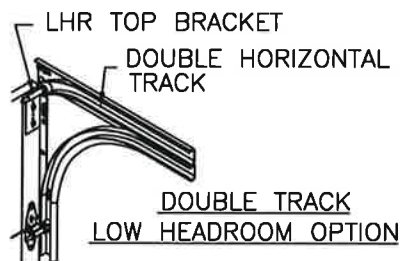
STEEL JAMBS



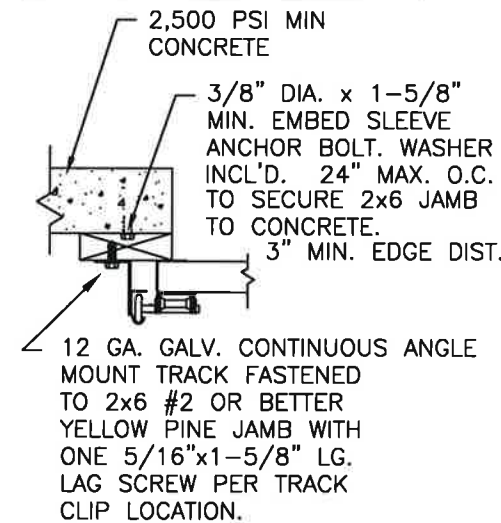
SECTION 3-3

NOTE DOUBLE TRACK HEADROOM, HI-LIFT TRACK, FOLLOW-THE-ROOF TRACK, AND VERTICAL LIFT TRACK ARE AVAILABLE OPTIONS. TRACK CONFIGURATION ABOVE THE DOOR OPENING DOES NOT AFFECT THE WIND LOAD RATING.

DOOR HEIGHT	"L"
6'-6"	70"
7'-0"	76"
7'-6"	82"
8'-0"	88"
8'-6"	94"
9'-0"	100"
9'-6"	106"
10'-0"	112"
10'-6"	118"
11'-0"	124"
11'-6"	130"
12'-0"	136"
12'-6"	142"
13'-0"	148"
13'-6"	154"
14'-0"	160"
14'-6"	166"
15'-0"	172"
15'-6"	178"
16'-0"	184"
16'-6"	190"
17'-0"	196"
17'-6"	202"
18'-0"	208"
18'-6"	214"
19'-0"	220"
19'-6"	226"
20'-0"	232"

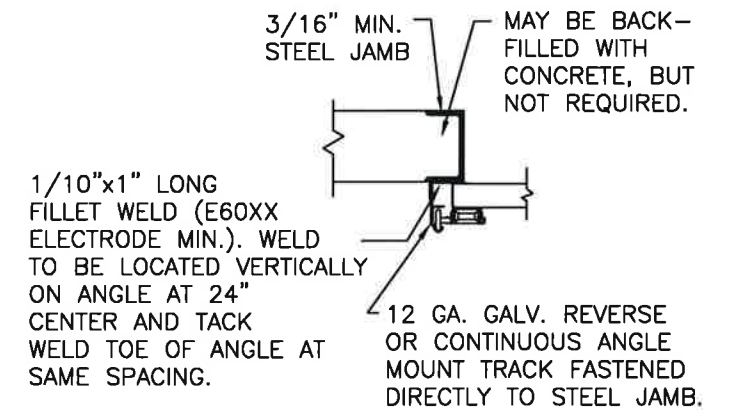


WOOD JAMB ON CONCRETE



SECTION 3-3

STEEL JAMBS



SECTION 3-3

DESIGN ENGINEER:
 MARK WESTERFIELD, P.E.
 FLORIDA P.E. #48495
 NC P.E. #23832, TEXAS P.E. #91513

Mark Westerfield
 4/21/22



NOTICE:
 Confidential/Proprietary information of CLOPAY CORPORATION is contained herein and may not be disclosed, used, duplicated, made available, or distributed without its prior consent. Failure to observe this notice may result in liability for any damages and losses resulting therefrom.



Unless Stated Otherwise TOLERANCES are
 .0 = ±.031
 .00 = ±.015
 .000 = ±.005
 .0000 = ±.001
 Degrees = ±1/2"

Unless Stated Otherwise DIMENSIONS ARE IN INCHES.

Clopay CORPORATION
 8585 Duke Boulevard
 Mason, OH 45040 USA
 Tel. No. 513-770-4800
 Fax No. 513-770-4853

PART NO.: -
 CLOPAY WINDLOAD RATING
W4

DESCRIPTION: M/N 904 18' WIDE DES.		+25/-25 PSF	
DRAWN BY: J.WHEELER	DATE: 4/7/22	SCALE: NTS	DWG. B
CHECKED BY: SH	DATE: CHKD_DT	SHEET 2 OF 2	SIZE
DWG. NO.: 105619	REV. NO. 00		

4

3

2

1