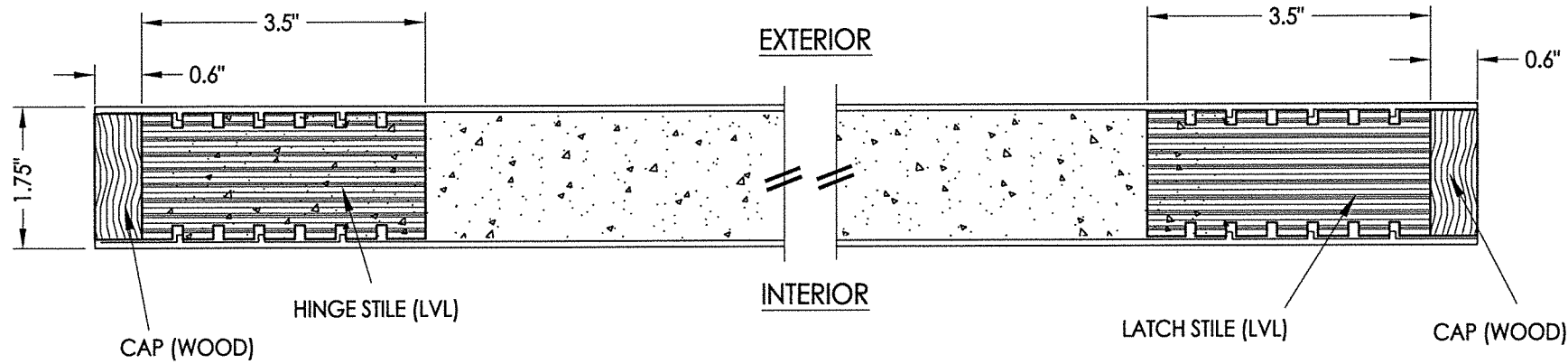
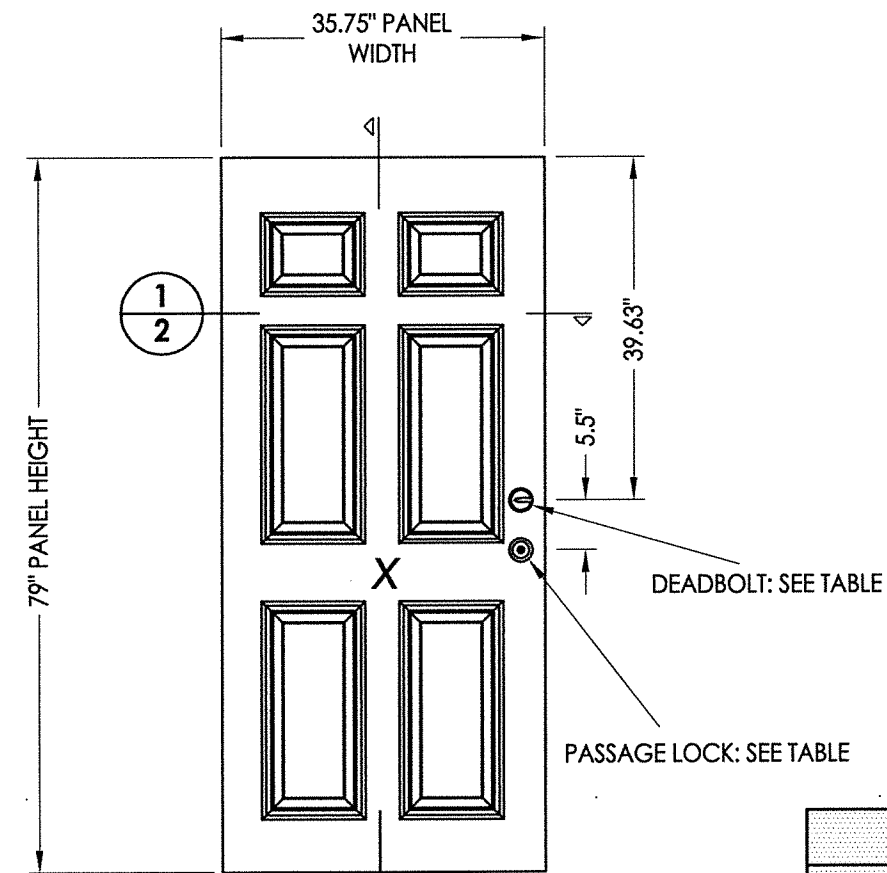


R:\Clients\Sunrise Windows\B - Texas Dept of Ins\TDI - XXX Fiberglass Door - Opaque, Impact (Tru-Grain Composite)\Drawings\TX-4801.dwg, 2

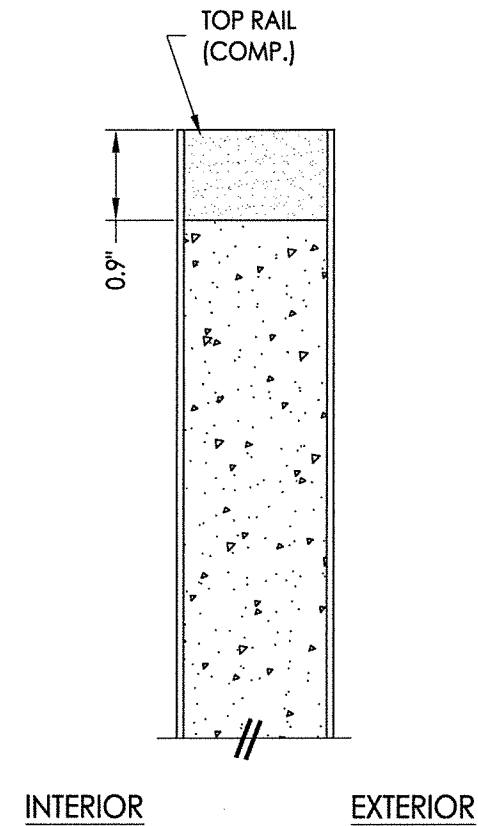


1
2 HORIZONTAL CROSS SECTION

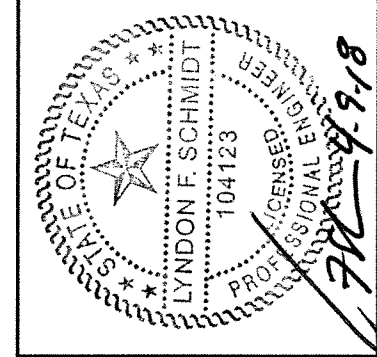


40 **DOOR PANEL**
Taylor Door
w/ Mastergrain Fiberglass skins

| HARDWARE TABLE | | |
|----------------|-------------|--------------------------------|
| MANUFACTURER | MODEL | |
| KWIKSET | Knob: | KWIKSET SIGNATURE SERIES |
| | DEADBOLT: | KWIKSET SIGNATURE SERIES (980) |
| SCHLAGE | Knob/Lever: | "F" SERIES |
| | DEADBOLT: | B60/62 |



2
2 VERTICAL CROSS SECTION



Documents Prepared By:
Lyndon F. Schmidt, P.E.
TEXAS P.E. #104123

RW BUILDING CONSULTANTS, INC.
P.O. Box 230 Valrico FL 33595
Phone No.: 813.659.9197

CERTIFICATE OF REGISTRATION # F-11852

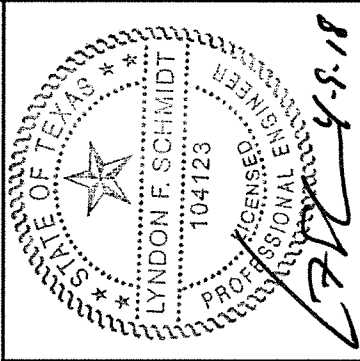
| | |
|-------------------|----------------------------|
| PRODUCT: | SUNRISE FIBERGLASS DOOR |
| PART OR ASSEMBLY: | DOOR PANEL DETAILS |

| NO. | DATE | BY | REVISIONS |
|-----|------|----|-----------|
| | | | |
| | | | |
| | | | |

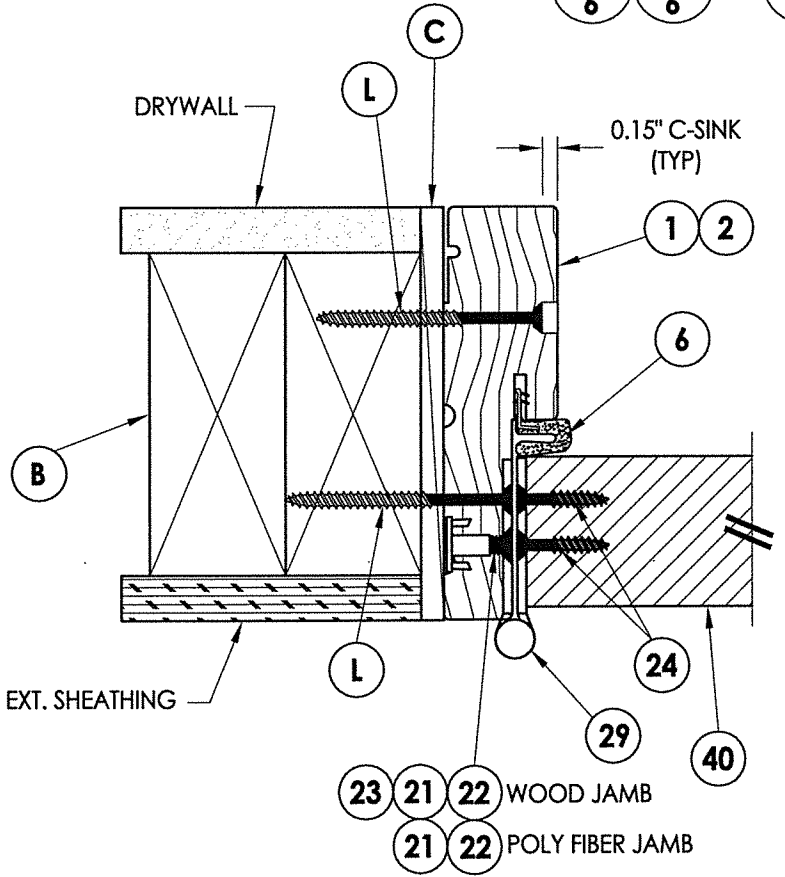
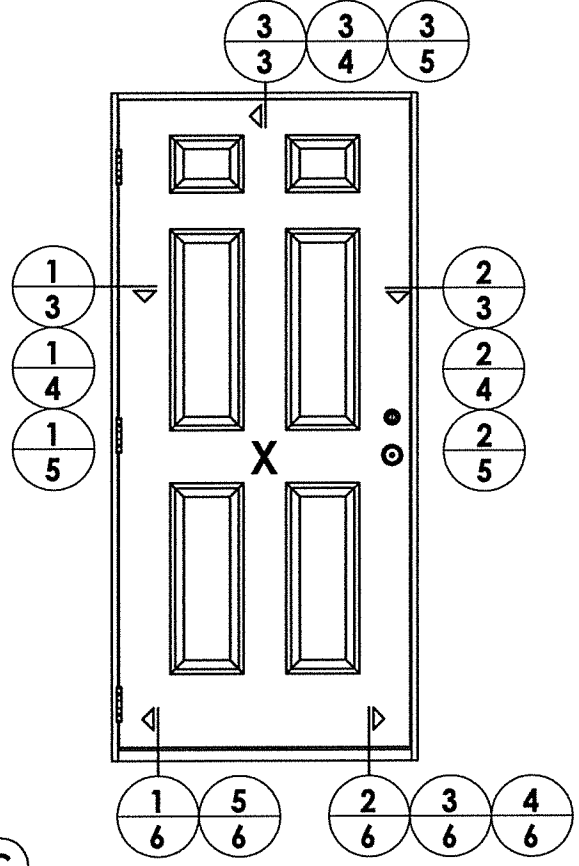
| | |
|--------------|---------|
| DATE: | 3/28/18 |
| SCALE: | N.T.S. |
| DWG. BY: | JK |
| CHK. BY: | LFS |
| DRAWING NO.: | TX-4801 |
| SHEET | 2 OF 8 |

© 2018 R.W. BUILDING CONSULTANTS INC.

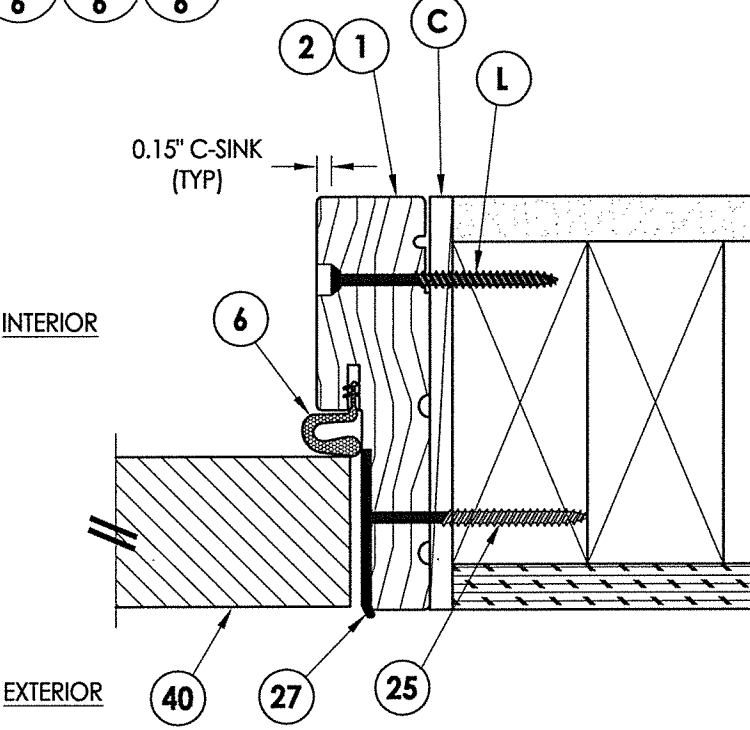
FIBERGLASS DOOR SKIN: MIN. 0.075" THK.
CORE MATERIAL: POLYURETHANE FOAM (1.9 PCF MIN.)



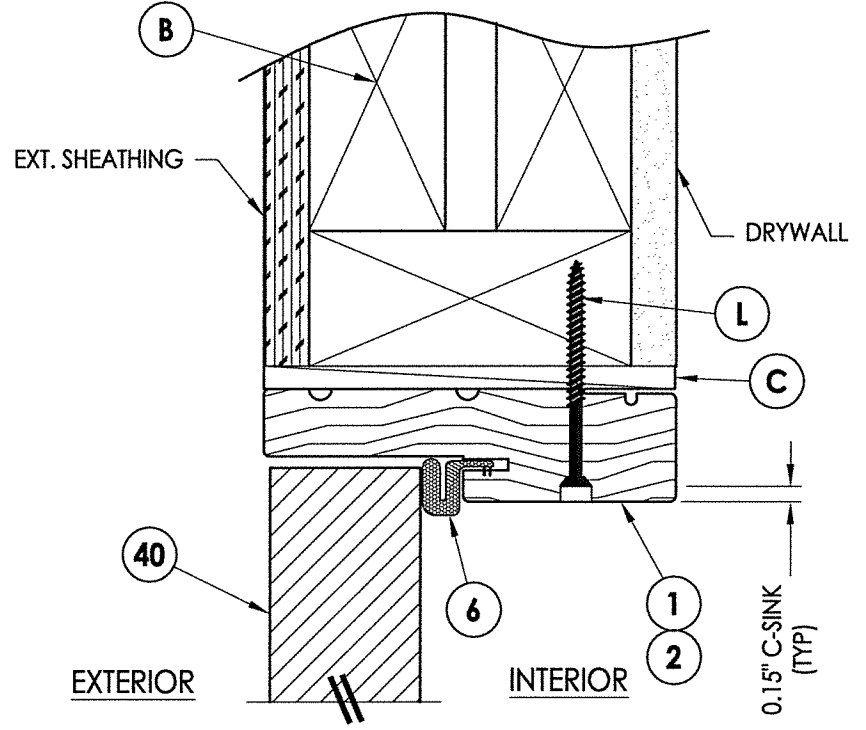
Documents Prepared By: Lyndon F. Schmidt, P.E.
 TEXAS P.E. #104123
 R.W. BUILDING CONSULTANTS, INC.
 P.O. Box 230 Valrico FL, 33595
 Phone No.: 813.659.9197
 CERTIFICATE OF REGISTRATION # F-11852



1 HORIZONTAL CROSS SECTION
3 Outswing shown (Inswing similar)

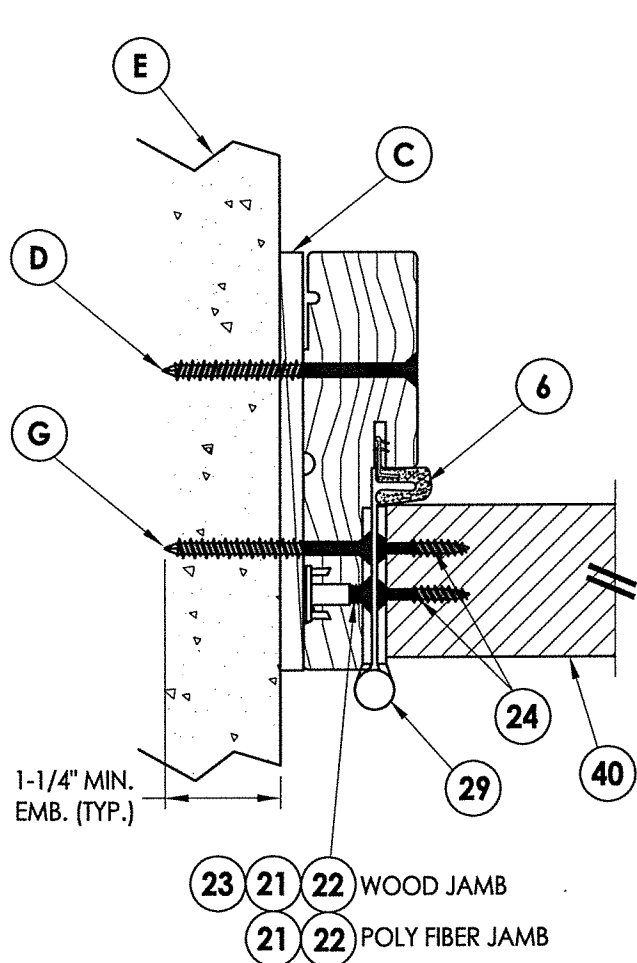


2 HORIZONTAL CROSS SECTION
3 Outswing shown (Inswing similar)



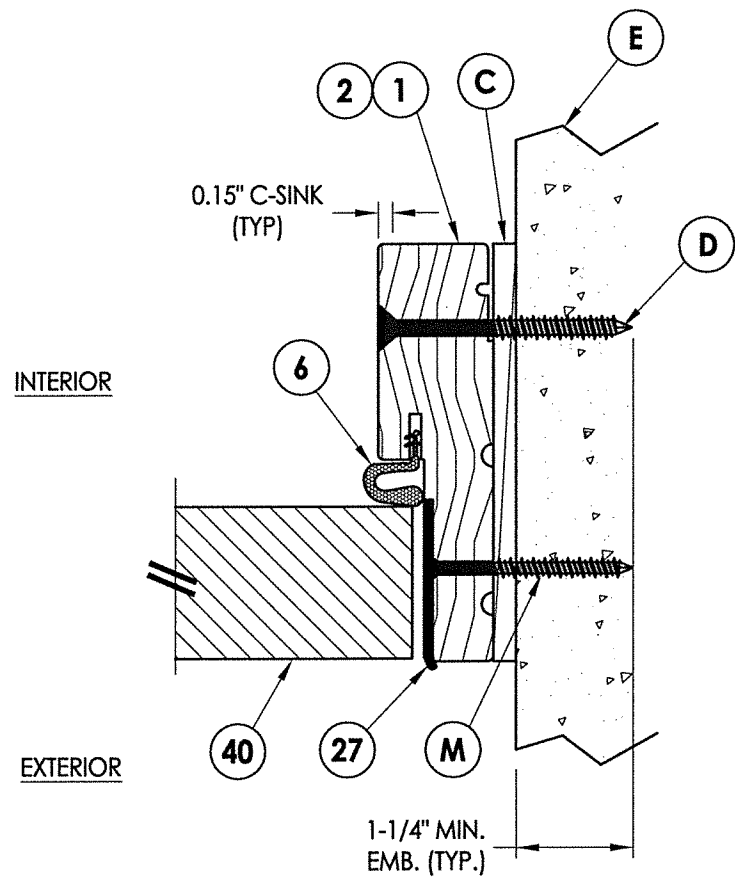
3 VERTICAL CROSS SECTION
3 Outswing shown (Inswing similar)

| | | | |
|-------------------|---|----|---|
| PRODUCT: | SUNRISE FIBERGLASS DOOR | | |
| PART OR ASSEMBLY: | HORIZONTAL & VERTICAL CROSS SECTIONS (2X FRAME) | | |
| NO. | DATE | BY | |
| | | | |
| | | | |
| | | | |
| | | | |
| DATE: | 3/28/18 | | |
| SCALE: | N.T.S. | | |
| DWG. BY: | JK | | |
| CHK. BY: | LFS | | |
| DRAWING NO.: | TX-4801 | | |
| SHEET | 3 | OF | 8 |

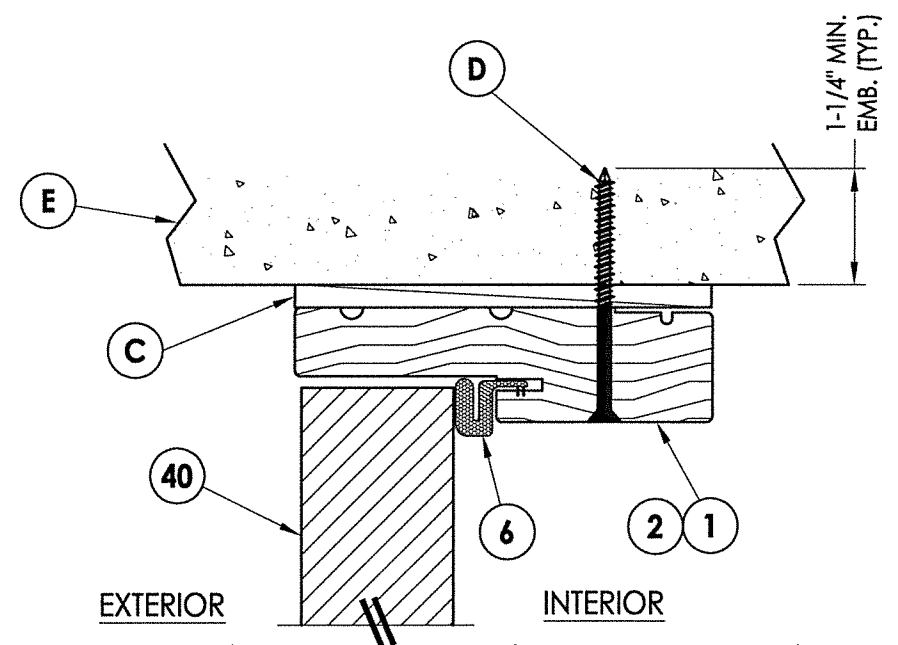


23 21 22 WOOD JAMB
 21 22 POLY FIBER JAMB

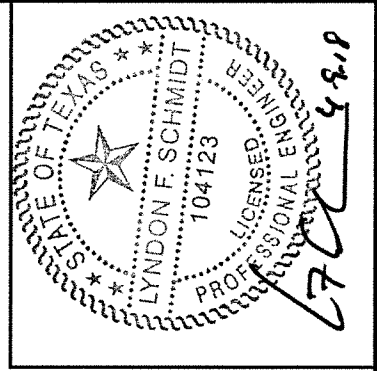
1 HORIZONTAL CROSS SECTION
5 Shown Direct to Masonry
 Outswing shown (Inswing similar)



2 HORIZONTAL CROSS SECTION
5 Shown Direct to Masonry
 Outswing shown (Inswing similar)

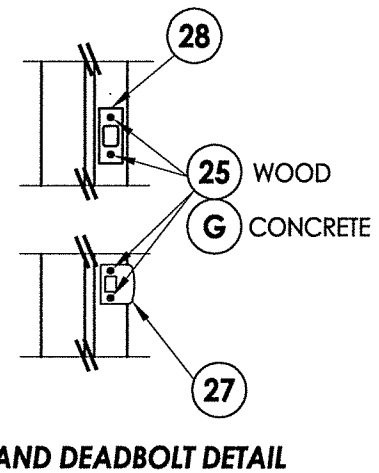
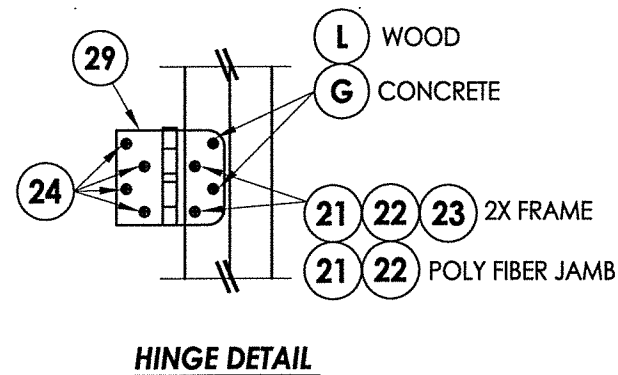
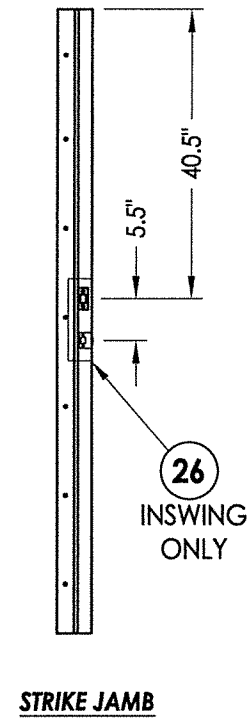
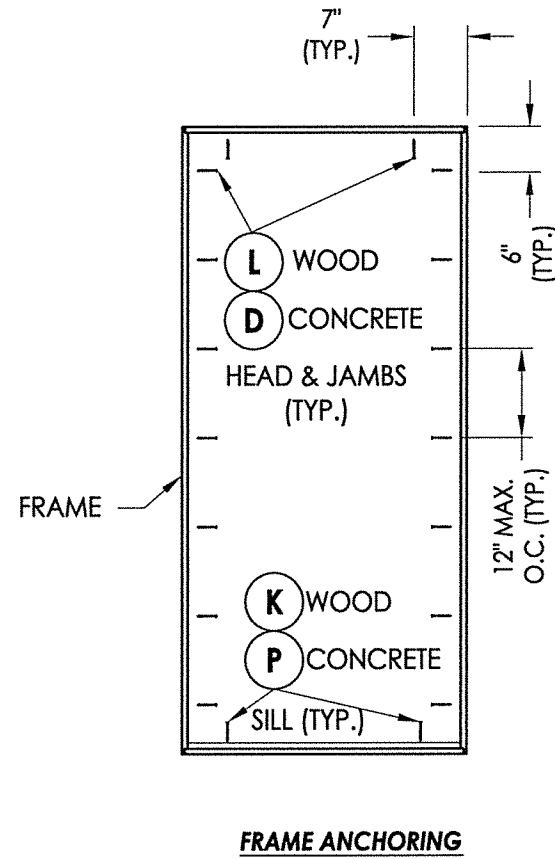
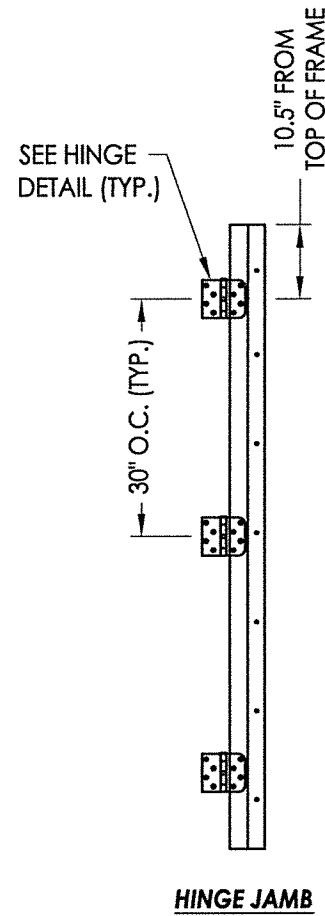


3 VERTICAL CROSS SECTION
5 Shown Direct to Masonry
 Outswing shown (Inswing similar)



Documents Prepared By: Lyndon F. Schmidt, P.E.
 TEXAS P.E. #104123
RW BUILDING CONSULTANTS, INC.
 P.O. Box 230 Valrico FL 33595
 Phone No.: 813.659.9197
 CERTIFICATE OF REGISTRATION # F-11852

| | |
|--|-----------|
| PRODUCT: SUNRISE FIBERGLASS DOOR | |
| PART OR ASSEMBLY: HORIZONTAL & VERTICAL CROSS SECTIONS (DIRECT TO MASONRY) | |
| NO. | DATE |
| BY | REVISIONS |
| DATE: 3/28/18 | |
| SCALE: N.T.S. | |
| DWG. BY: JK | |
| CHK. BY: LFS | |
| DRAWING NO.: TX-4801 | |
| SHEET 5 OF 8 | |



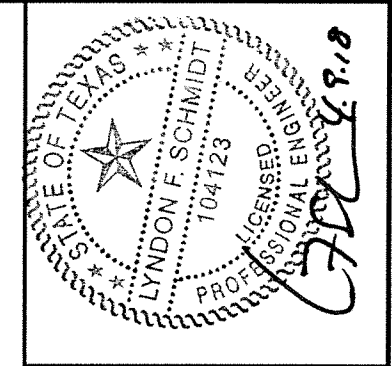
CONCRETE ANCHOR NOTES:

1. Concrete anchor locations at the corners may be adjusted to maintain the min. edge distance to mortar joints.
2. Concrete anchor locations noted as "MAX. ON CENTER" must be adjusted to maintain the min. edge distance to mortar joints, additional concrete anchors may be required to ensure the "MAX. ON CENTER" dimension are not exceeded.
3. Concrete anchor table:

| ANCHOR TYPE | ANCHOR SIZE | MIN. EMBEDMENT | MIN. CLEARANCE TO MASONRY EDGE | MIN. CLEARANCE TO ADJACENT ANCHOR |
|----------------|-------------|----------------|--------------------------------|-----------------------------------|
| ITW TAPCON® | 1/4" | 1-1/4" | 2" | 4" |
| ELCO ULTRACON® | 1/4" | 1-1/4" | 1" | 4" |
| ITW TAPCON® | 3/16" | 1-1/4" | 3" | 1-1/2" |

WOOD SCREW INSTALLATION NOTES:

1. Maintain a minimum 5/8" edge distance, 1" end distance, & 1" o.c. spacing of wood screws to prevent the splitting of wood.



Documents Prepared By: Lyndon F. Schmidt, P.E.
TEXAS P.E. #104123

RW BUILDING CONSULTANTS, INC.
P.O. Box 230 Valrico FL, 33595
Phone No.: 813.659.9197

CERTIFICATE OF REGISTRATION # F-11852

PRODUCT: SUNRISE FIBERGLASS DOOR

PART OR ASSEMBLY: FRAME ANCHORING (X)

| NO. | DATE | BY | REVISIONS |
|-----|------|----|-----------|
| | | | |
| | | | |
| | | | |
| | | | |

DATE: 3/28/18

SCALE: N.T.S.

DWG. BY: JK

CHK. BY: LFS

DRAWING NO.:

TX-4801

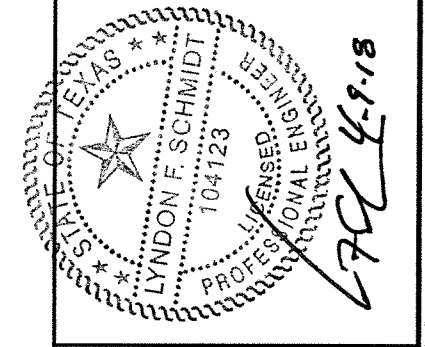
SHEET 7 OF 8

BILL OF MATERIALS

| ITEM # | DESCRIPTION | MATERIAL |
|--------|--|----------|
| A | 1X BUCK (SG >= 0.42) | WOOD |
| B | 2X STUD (SG >= 0.42) | WOOD |
| C | 1/4" MAX. SHIM SPACE | - |
| D | 1/4" PFH ELCO OR ITW CONCRETE SCREW (1.375" MIN. EMBEDMENT) | STEEL |
| E | MASONRY - 3,000 PSI MIN. CONCRETE CONFORMING TO ACI 301 OR HOLLOW BLOCK CONFORMING TO ASTM C90 | CONCRETE |
| G | 3/16" ITW CONCRETE SCREW (1-1/4" MIN. EMBEDMENT) | STEEL |
| K | #10 PFH WOOD SCREW (1.5" MIN. EMBEDMENT) | STEEL |
| L | #10 X 2-1/2" PFH WOOD SCREW (1.15" MIN. EMBEDMENT) | STEEL |
| P | 1/4" PFH ELCO OR ITW CONCRETE SCREW (1-3/4" MIN. EMBEDMENT) | STEEL |
| X | 2X REINFORCEMENT (SG >= 0.55) | WOOD |
| 1 | JAMB (FINGER JOINT PINE w/ VINYL WRAP) | WOOD |
| 2 | JAMB (POLY FIBER) | COMP. |
| 6 | WEATHERSTRIP (MEDIUM REACH) | FOAM |
| 7 | WEATHERSTRIP (LONG REACH) | FOAM |
| 10 | SWEEP | VINYL |
| 21 | #10-24 X 5/8" M.S. w/ 1/2" STAFAST INSERT P/N D102413 | STEEL |
| 22 | #10-24 X 5/8" M.S. w/ 3/8" STAFAST PRONG TEE NUT | STEEL |
| 23 | #10 x 3/4" PFH WOOD SCREW | STEEL |
| 24 | #10 x 1" PFH WOOD SCREW | STEEL |

BILL OF MATERIALS

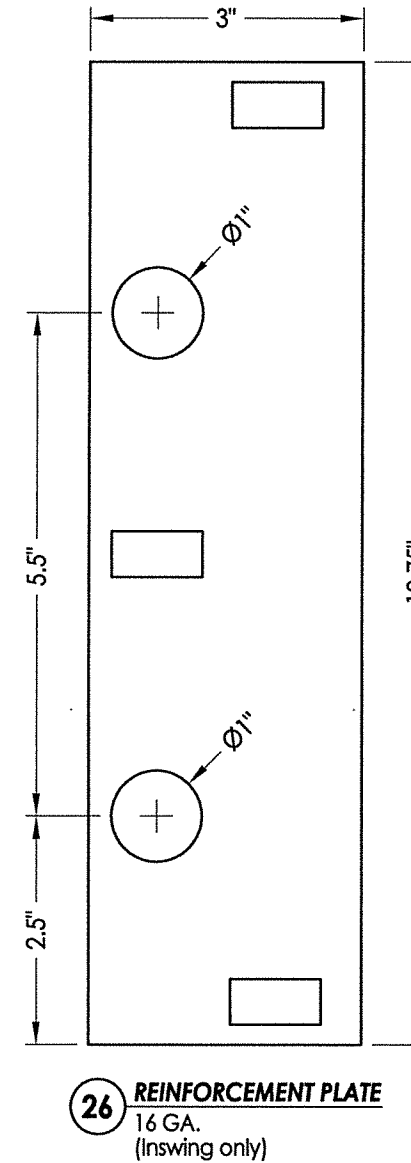
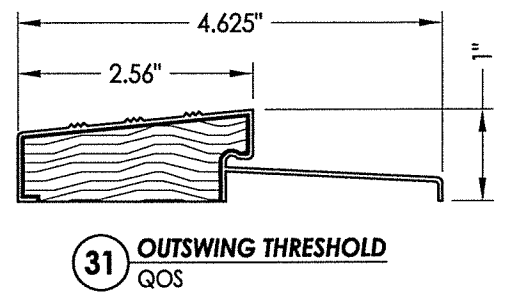
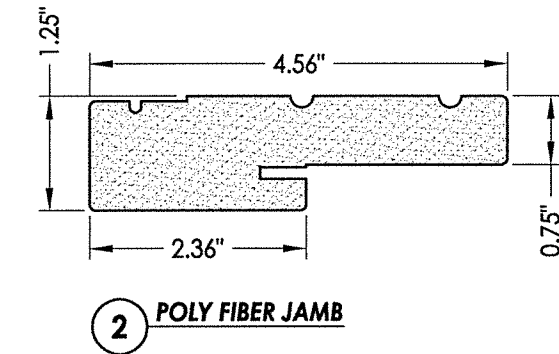
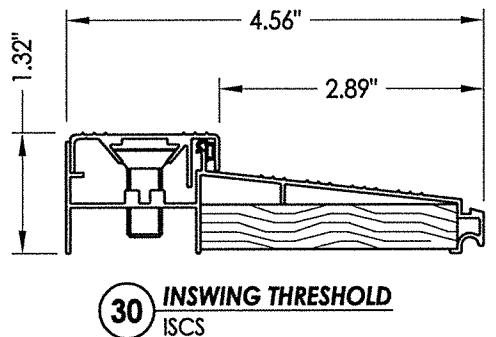
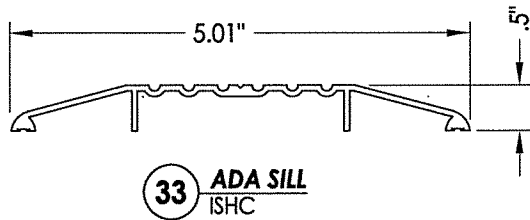
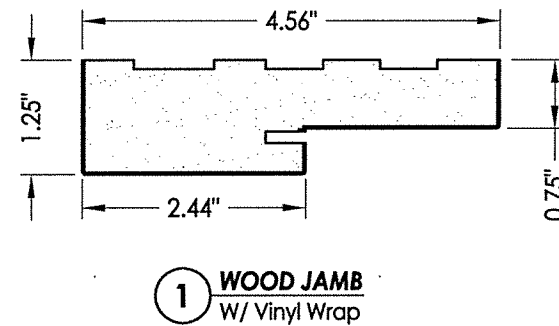
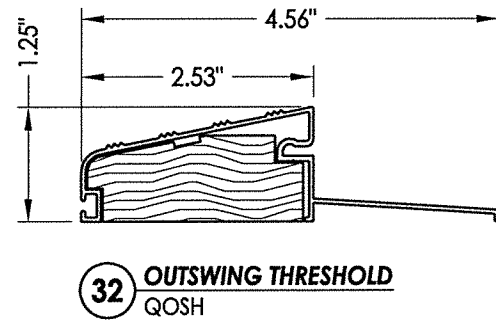
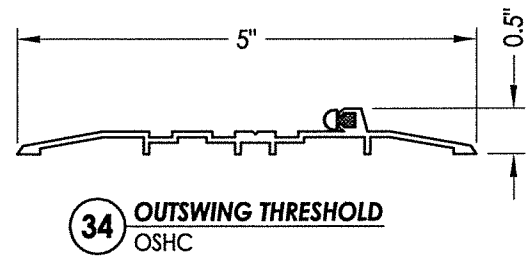
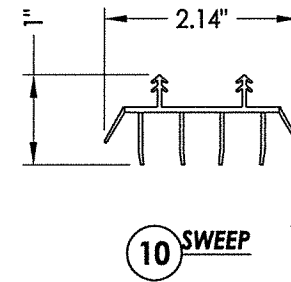
| ITEM # | DESCRIPTION | MATERIAL |
|--------|----------------------------|-----------|
| 25 | #8 x 2-1/2" PFH WOOD SCREW | STEEL |
| 26 | REINFORCEMENT PLATE | STEEL |
| 27 | LATCH STRIKE PLATE | STEEL |
| 28 | DEADBOLT STRIKE PLATE | STEEL |
| 29 | 4" X 4" HINGE | STEEL |
| 30 | INSWING THRESHOLD | ALUM/COMP |
| 31 | OUTSWING THRESHOLD | ALUM/COMP |
| 32 | OUTSWING THRESHOLD | ALUM/COMP |
| 33 | ADA THRESHOLD | ALUM |
| 34 | ADA BUMP THRESHOLD | ALUM |
| 40 | DOOR PANEL | - |



Documents Prepared By: Lyndon F. Schmidt, P.E.
TEXAS P.E. #104123

RW BUILDING CONSULTANTS, INC.
P.O. Box 230 Valrico FL 33595
Phone No.: 813.659.9197

CERTIFICATE OF REGISTRATION # F-11852



PRODUCT: SUNRISE FIBERGLASS DOOR

PART OR ASSEMBLY: BILL OF MATERIALS AND COMPONENTS

| NO. | DATE | BY | REVISIONS |
|-----|------|----|-----------|
| | | | |
| | | | |
| | | | |
| | | | |

DATE: 3/28/18

SCALE: N.T.S.

DWG. BY: JK

CHK. BY: LFS

DRAWING NO.: TX-4801

SHEET 8 OF 8