

REVISIONS			
REV	DESCRIPTION	DATE	APPROVED
A	REVISED PER NEW REQUIREMENTS	02/17/2020	R.L.

NOTES:

1. THE PRODUCT SHOWN HEREIN IS DESIGNED AND MANUFACTURED TO COMPLY WITH REQUIREMENTS OF THE 2018 IBC AND 2018 IRC.
2. WOOD FRAMING AND MASONRY OPENING TO BE DESIGNED AND ANCHORED TO PROPERLY TRANSFER ALL LOADS TO STRUCTURE. FRAMING AND MASONRY OPENING IS THE RESPONSIBILITY OF THE ARCHITECT OR ENGINEER OF RECORD.
3. 1X BUCK OVER MASONRY/CONCRETE IS OPTIONAL.
4. WHERE SHIM OR BUCK THICKNESS IS LESS THAN 1-1/2" UNITS MUST BE ANCHORED THROUGH THE FRAME IN ACCORDANCE WITH MANUFACTURER'S PUBLISHED INSTALLATION INSTRUCTIONS. ANCHORS SHALL BE SECURELY FASTENED DIRECTLY INTO MASONRY, CONCRETE OR OTHER STRUCTURAL SUBSTRATE MATERIAL.
5. WHERE WOOD BUCK THICKNESS IS 1-1/2" OR GREATER, BUCK SHALL BE SECURELY FASTENED TO MASONRY, CONCRETE OR OTHER STRUCTURAL SUBSTRATE. UNITS MAY BE ANCHORED THROUGH FRAME TO SECURED WOOD BUCK IN ACCORDANCE WITH MANUFACTURER'S PUBLISHED INSTALLATION INSTRUCTIONS.
6. WHERE 1X BUCK IS NOT USED DISSIMILAR MATERIALS MUST BE SEPARATED WITH APPROVED COATING OR MEMBRANE. SELECTION OF COATING OR MEMBRANE IS THE RESPONSIBILITY OF THE ARCHITECT OR ENGINEER OF RECORD.
7. BUCKS SHALL EXTEND BEYOND UNIT FRAME INTERIOR FACE SO THAT FULL FRAME SUPPORT IS PROVIDED.
8. SHIM AS REQUIRED AT EACH ANCHOR LOCATION WITH LOAD BEARING SHIM. SHIM WHERE SPACE OF 1/16" OR GREATER OCCURS. MAXIMUM ALLOWABLE SHIM STACK TO BE 1/4".
9. SHIMS SHALL BE LOCATED, APPLIED AND MADE FROM MATERIALS AND THICKNESS CAPABLE OF SUSTAINING APPLICABLE LOADS.
10. WIND LOAD DURATION FACTOR Cd=1.6 WAS USED FOR WOOD ANCHOR CALCULATIONS.
11. FRAME MATERIAL: ALUMINUM 6063-T5, 6063-T5 AND 6005A-T5.
12. UNITS MUST BE GLAZED PER ASTM E1300, SEE SHEET 3 FOR GLASS DETAILS.
13. APPROVED IMPACT PROTECTIVE SYSTEM IS NOT REQUIRED FOR THIS PRODUCT IN WIND BORNE DEBRIS REGIONS.
14. FOR ANCHORING THROUGH FRAME INTO WOOD FRAMING OR 2X BUCK USE #14 WOOD SCREWS WITH SUFFICIENT LENGTH TO ACHIEVE A 1 7/16" MINIMUM EMBEDMENT INTO SUBSTRATE. LOCATE ANCHORS AS SHOWN IN ELEVATIONS AND INSTALLATION DETAILS.

15. FOR ANCHORING THROUGH FRAME INTO MASONRY/CONCRETE USE 1/4" ELCO CRETE-FLEX WITH SUFFICIENT LENGTH TO ACHIEVE A 1 1/4" MINIMUM EMBEDMENT INTO SUBSTRATE WITH 1 3/4" MINIMUM EDGE DISTANCE. LOCATE ANCHORS AS SHOWN IN ELEVATIONS AND INSTALLATION DETAILS.
16. FOR ANCHORING THROUGH FRAME INTO METAL STRUCTURE USE #14 SMS OR SELF DRILLING SCREWS WITH SUFFICIENT LENGTH TO ACHIEVE 3 THREADS MINIMUM BEYOND STRUCTURE INTERIOR WALL. LOCATE ANCHORS AS SHOWN IN ELEVATIONS AND INSTALLATION DETAILS.
17. ALL FASTENERS TO BE CORROSION RESISTANT.
18. INSTALLATION ANCHORS SHALL BE INSTALLED IN ACCORDANCE WITH ANCHOR MANUFACTURER'S INSTALLATION INSTRUCTIONS AND ANCHORS SHALL NOT BE USED IN SUBSTRATES WITH STRENGTHS LESS THAN THE MINIMUM STRENGTH SPECIFIED BELOW:
  - A. WOOD: MINIMUM SPECIFIC GRAVITY OF G=0.42
  - B. CONCRETE: MINIMUM COMPRESSIVE STRENGTH OF 3,000 PSI.
  - C. MASONRY: GROUT/FILLED BLOCK PER ASTM C90 WITH Fm=2,000PSI MINIMUM.
  - D. METAL STRUCTURE: STEEL 18GA (.048") FY=33KSI/FU=52KSI OR ALUMINUM 6063-T5 FU=30KSI .125" THICK MINIMUM

TABLE OF CONTENTS	
SHEET NO.	DESCRIPTION
1	NOTES
2	ELEVATIONS
3	ANCHORING LAYOUT
4 - 5	CROSS SECTIONS
6 - 7	INSTALLATION DETAILS
8	WEEP DETAILS
9	COMPONENTS

**SOLAR INNOVATIONS, INC.**  
31 ROBERTS RD.  
PINE GROVE, PA 17963

SI 33350 G3 IMPACT FGW 3.5' X 9.5' PANEL  
LITE RAIL OUT-FOLD ALUMINUM  
NOTES

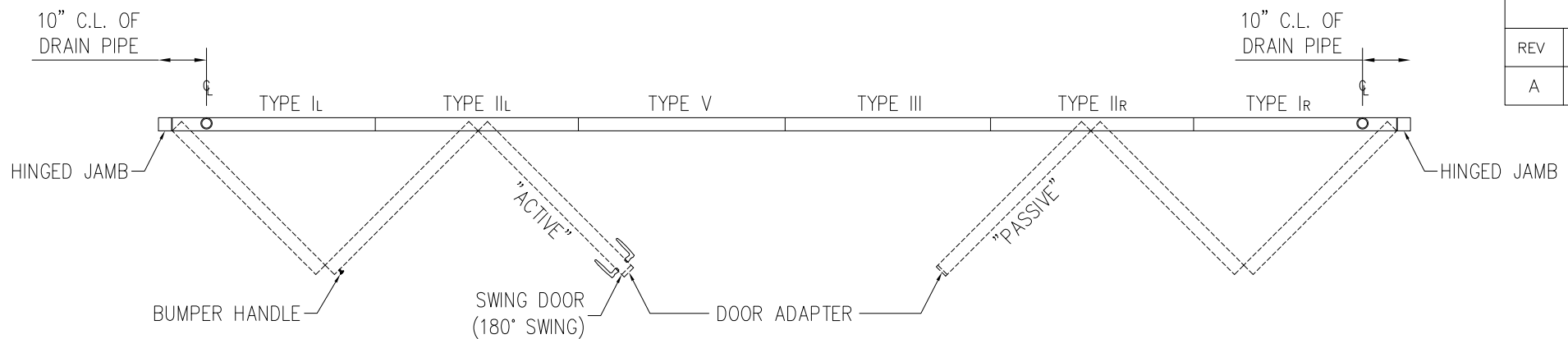
DRAWN: N.G.	DWG NO. 08-02650	REV A
SCALE NTS	DATE 03/19/15	SHEET 1 OF 9

L. ROBERTO LOMAS P.E.  
1432 WOODFORD RD LEWISVILLE, NC 27023  
434-688-0609 rllomas@rlomaspe.com

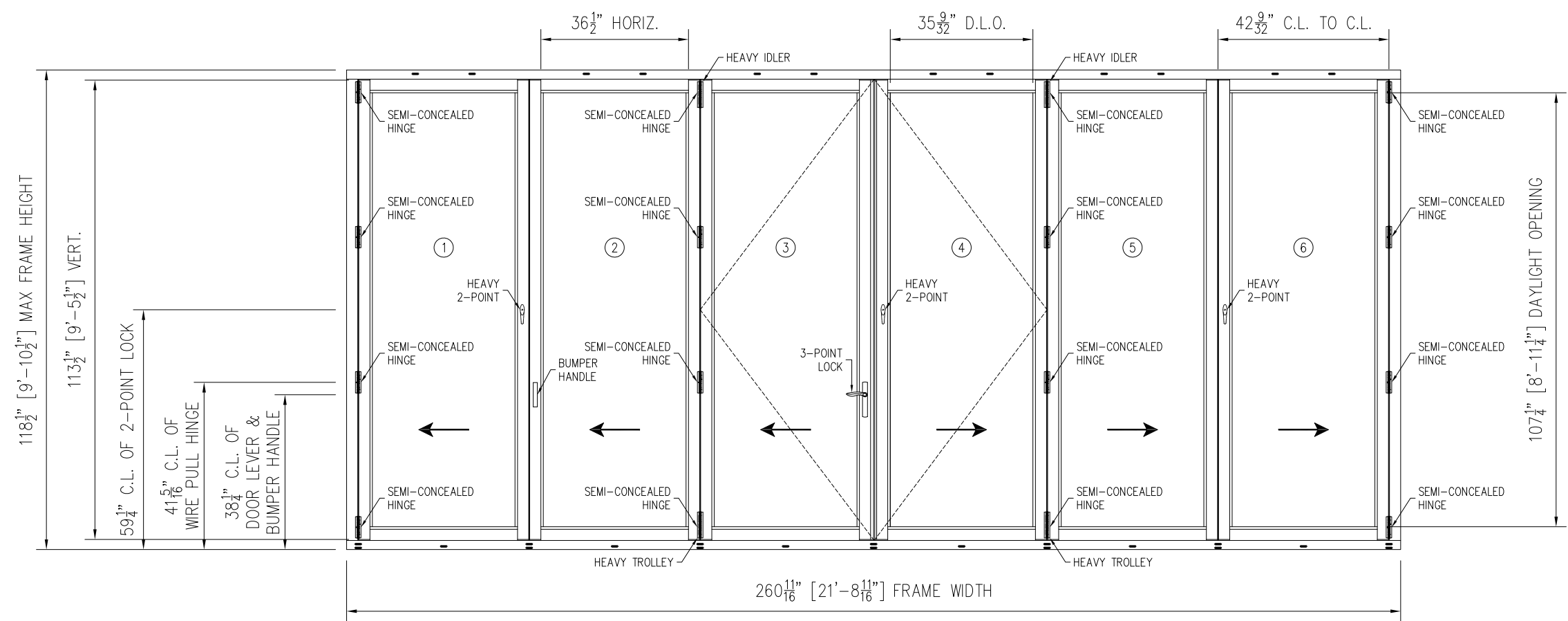
SIGNED: 04/27/2021



Luis R. Lomas P.E.  
TX No.: 101889



REVISIONS			
REV	DESCRIPTION	DATE	APPROVED
A	REVISED PER NEW REQUIREMENTS	02/17/2020	R.L.



**SI 33350 G3 IMPACT FGW 3.5X9.5 PANEL LITE RAIL OUT-FOLD ALUMINUM**  
EXTERIOR VIEW

DESIGN PRESSURE RATING	IMPACT RATING
<b>±50.0PSF</b>	<b>LARGE AND SMALL MISSILE IMPACT</b>

MISSILE LEVEL D, WIND ZONE 4  
MULTIPLE PANELS CONFIGURATIONS ARE APPROVED AS LONG AS INDIVIDUAL  
PANEL SIZE DOES NOT EXCEED 42 9/32" WIDTH AND 113 1/2" HEIGHT

HARDWARE SCHEDULE
A. SEMI-CONCEALED HINGE BY SOLAR INNOVATIONS
B 2 POINT HANDLE & LOCK MS000487-XX BY SOLAR INNOVATIONS
C 3 POINT HANDLE & LOCK BY SOLAR INNOVATIONS
D SURFACE MOUNT HINGE BY SOLAR INNOVATIONS

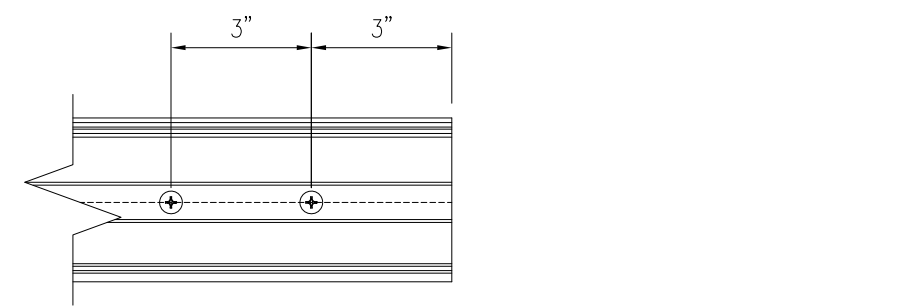
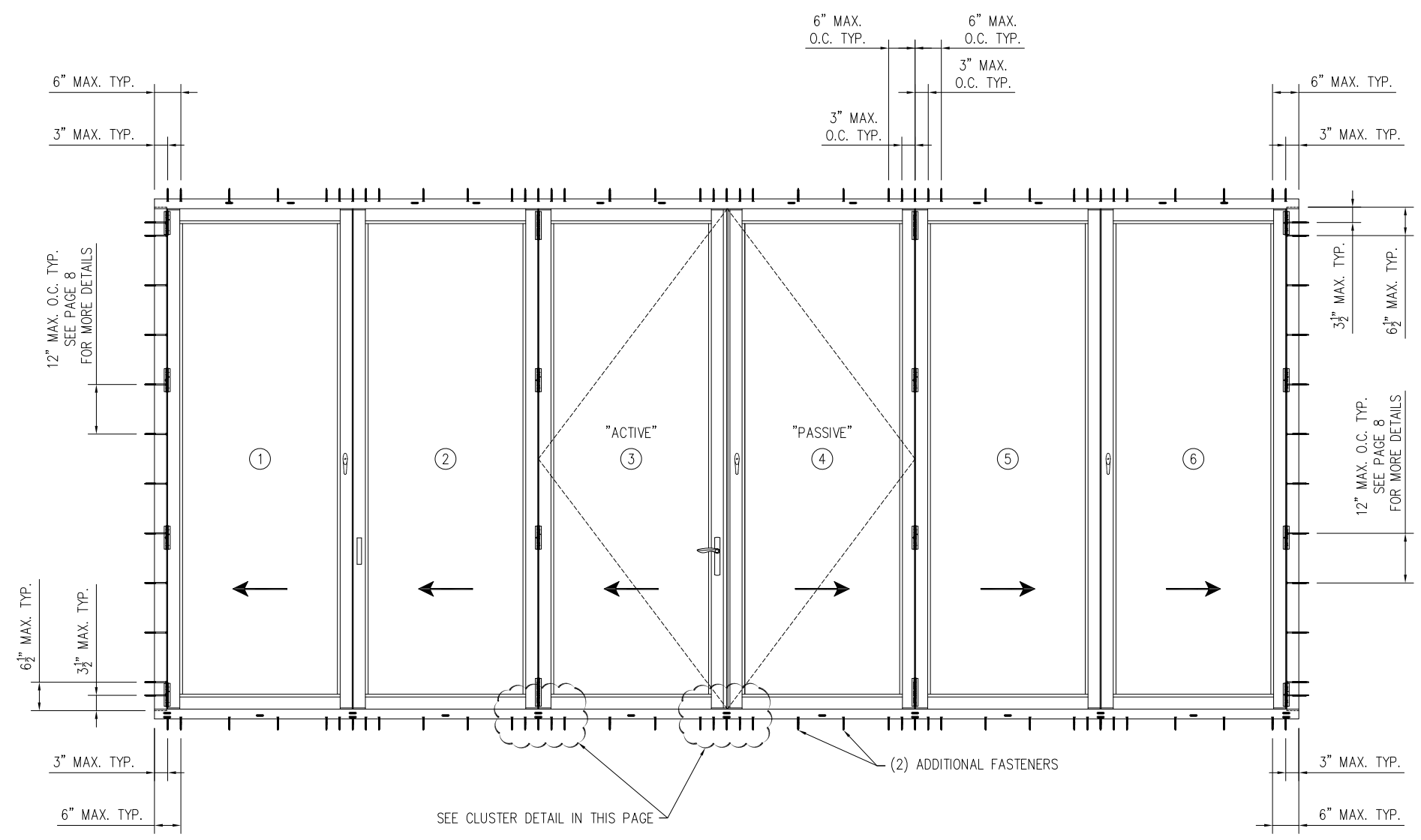
<b>SOLAR INNOVATIONS, INC.</b> 31 ROBERTS RD. PINE GROVE, PA 17963		
SI 33350 G3 IMPACT FGW 3.5' X 9.5' PANEL LITE RAIL OUT-FOLD ALUMINUM ELEVATIONS		
DRAWN: N.G.	DWG NO. 08-02650	REV A
SCALE NTS	DATE 03/19/15	SHEET 2 OF 9
L. ROBERTO LOMAS P.E. 1432 WOODFORD RD LEWISVILLE, NC 27023 434-688-0609 rllomas@lrlomaspe.com		

SIGNED: 04/27/2021

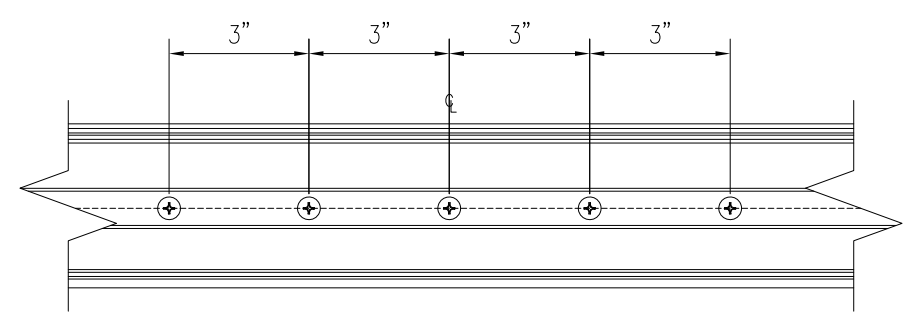


Luis R. Lomas P.E.  
TX No.: 101889

REVISIONS			
REV	DESCRIPTION	DATE	APPROVED
A	REVISED PER NEW REQUIREMENTS	02/17/2020	R.L.

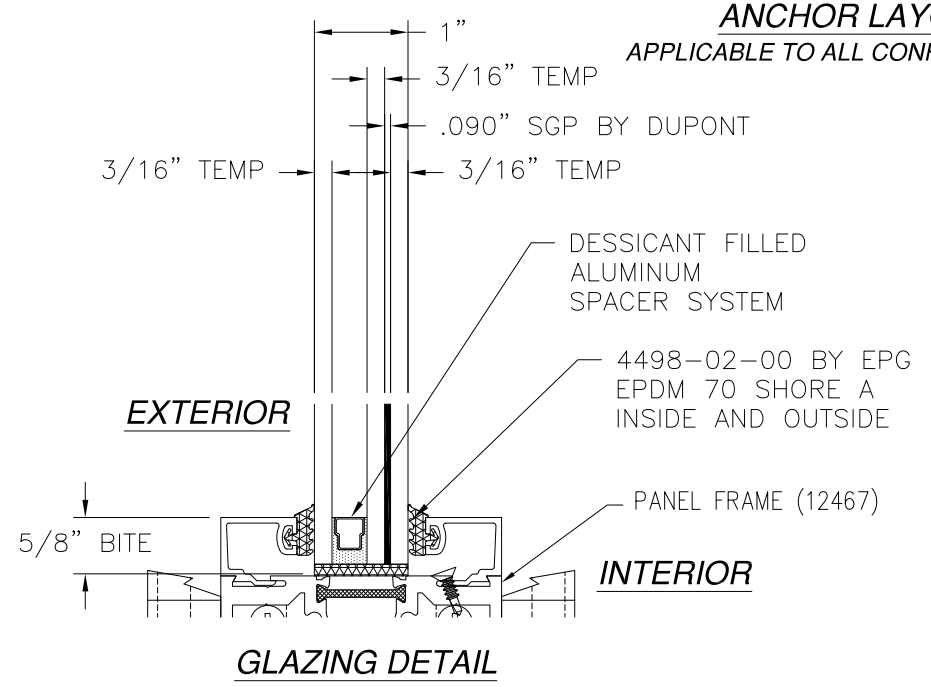


SILL AND HEAD  
END DETAIL



SILL AND HEAD  
CLUSTER DETAIL

**ANCHOR LAYOUT**  
APPLICABLE TO ALL CONFIGURATIONS.



**GLAZING DETAIL**

SIGNED: 04/27/2021

**SOLAR INNOVATIONS, INC.**  
31 ROBERTS RD.  
PINE GROVE, PA 17963

SI 33350 G3 IMPACT FGW 3.5' X 9.5' PANEL  
LITE RAIL OUT-FOLD ALUMINUM  
ANCHORING LAYOUT AND GLAZING DETAIL

DRAWN: N.G.	DWG NO. 08-02650	REV A
SCALE NTS	DATE 03/19/15	SHEET 3 OF 9

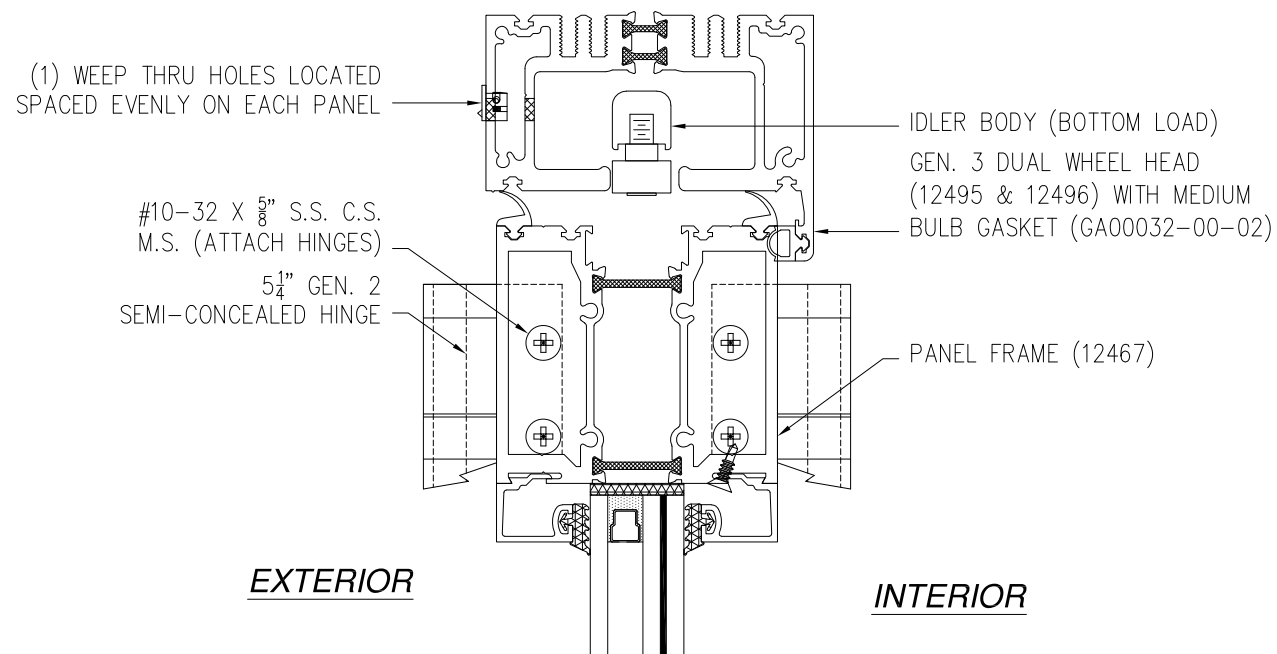
L. ROBERTO LOMAS P.E.  
1432 WOODFORD RD LEWISVILLE, NC 27023  
434-688-0609 rllomas@lrlomaspe.com



Luis R. Lomas P.E.  
TX No.: 101889

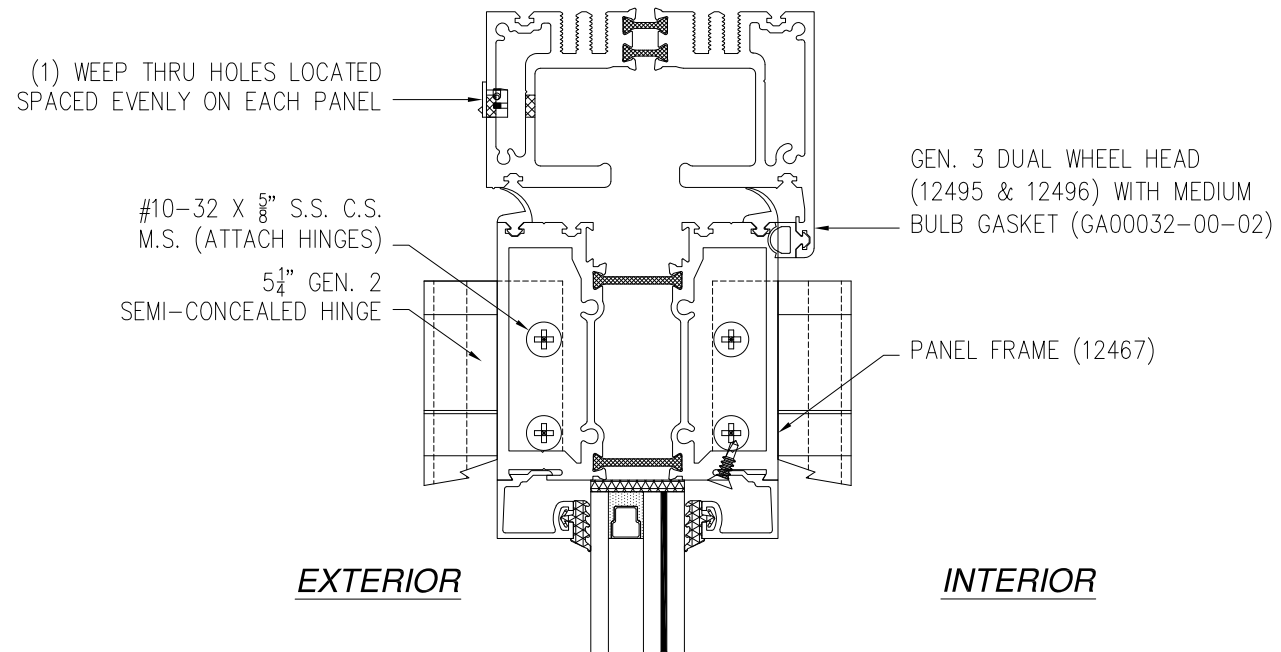
**FOR ILLUSTRATION PURPOSES ONLY  
FOR INSTALLATION DETAILS REFER TO SHEETS 6 - 7**

REVISIONS			
REV	DESCRIPTION	DATE	APPROVED
A	REVISED PER NEW REQUIREMENTS	02/17/2020	R.L.



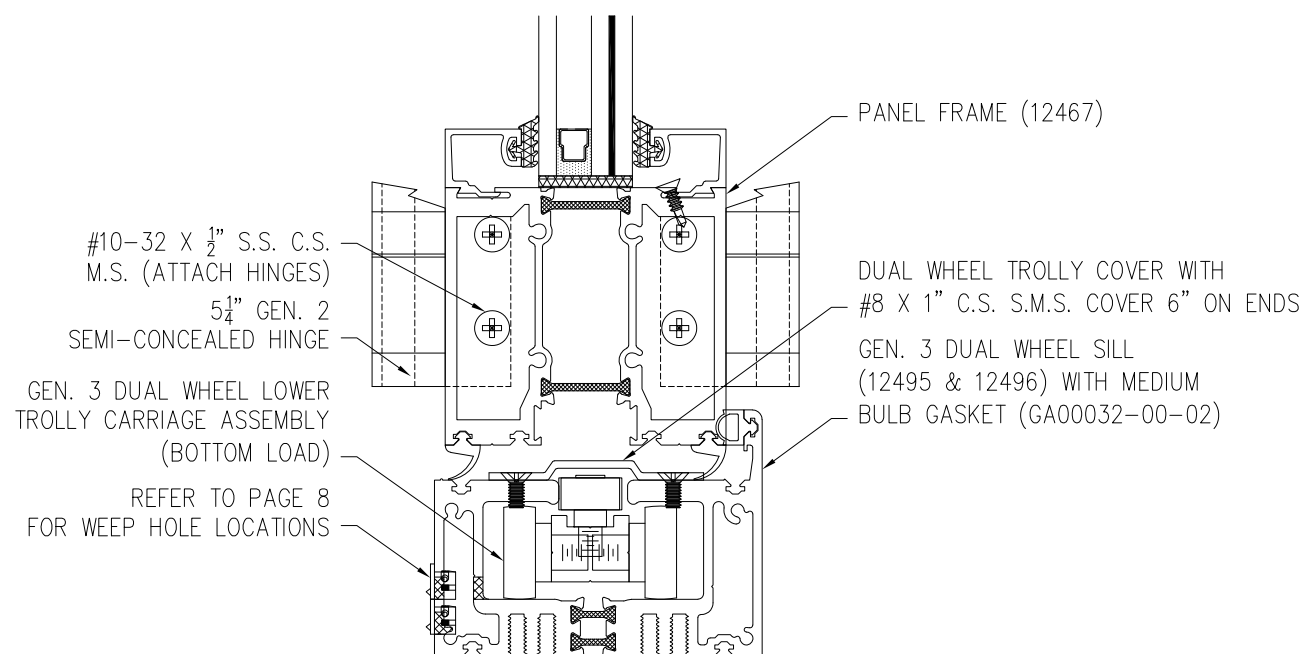
**EXTERIOR**

**INTERIOR**

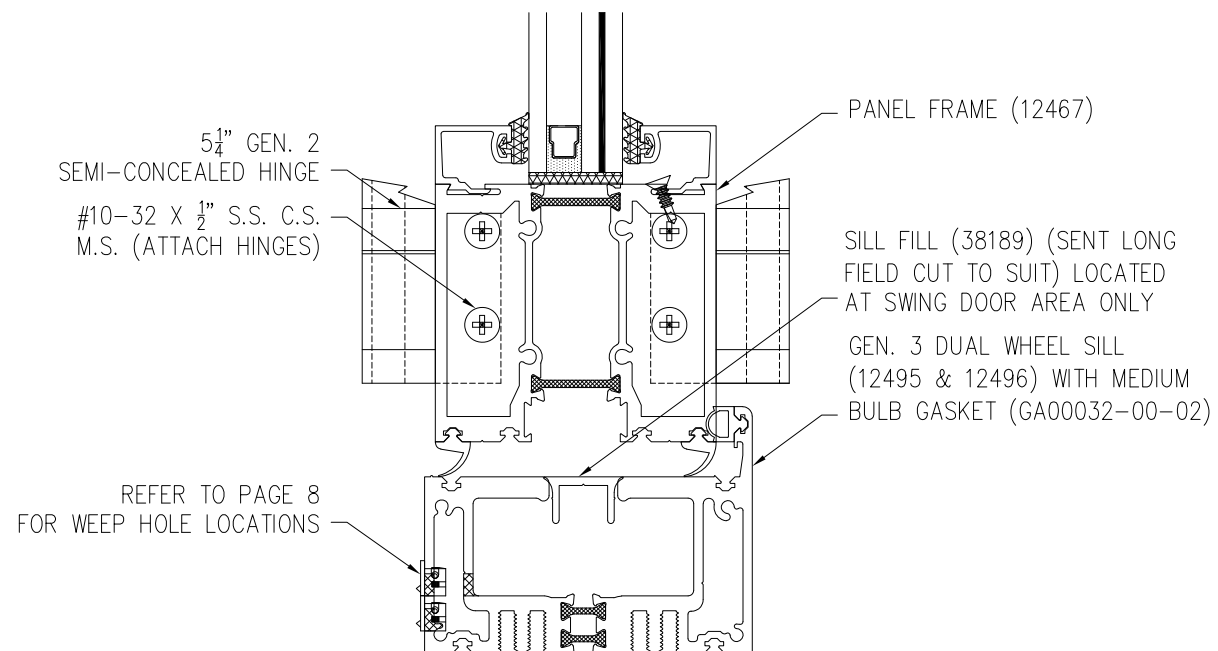


**EXTERIOR**

**INTERIOR**



**VERTICAL CROSS SECTION  
BOTTOM LOAD SILL**



**VERTICAL CROSS SECTION  
STANDARD**

**SOLAR INNOVATIONS, INC.**  
31 ROBERTS RD.  
PINE GROVE, PA 17963

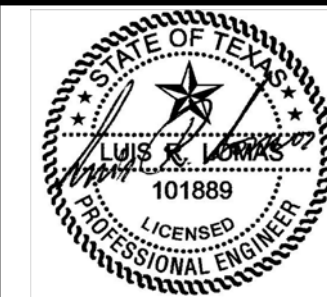
---

SI 33350 G3 IMPACT FGW 3.5' X 9.5' PANEL  
LITE RAIL OUT-FOLD ALUMINUM  
CROSS SECTIONS

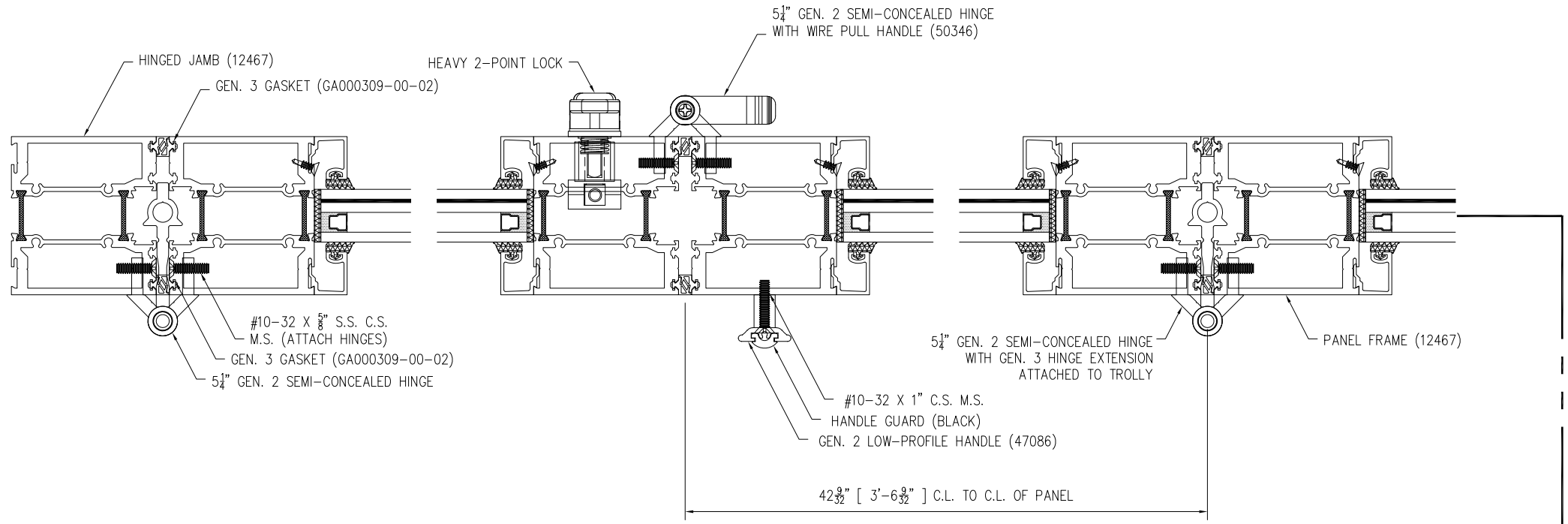
DRAWN: N.G.	DWG NO. 08-02650	REV A
SCALE NTS	DATE 03/19/15	SHEET 4 OF 9

L. ROBERTO LOMAS P.E.  
1432 WOODFORD RD LEWISVILLE, NC 27023  
434-688-0609 rllomas@rlomaspe.com

SIGNED: 04/27/2021

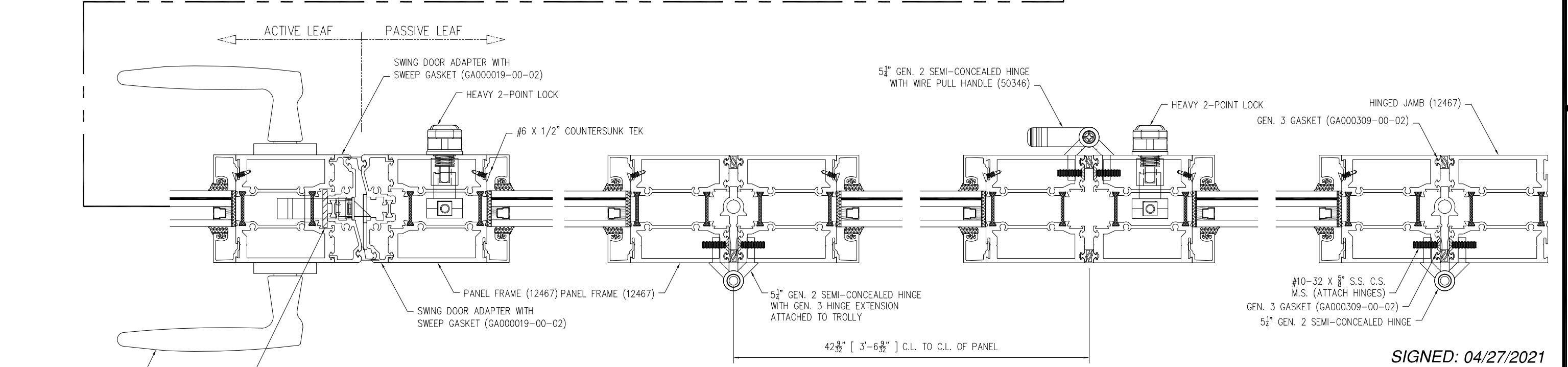


Luis R. Lomas P.E.  
TX No.: 101889



**FOR ILLUSTRATION PURPOSES ONLY  
FOR INSTALLATION DETAILS  
REFER TO SHEETS 6 - 7**

REVISIONS			
REV	DESCRIPTION	DATE	APPROVED
A	REVISED PER NEW REQUIREMENTS	02/17/2020	R.L.



"TORONTO" SWING DOOR LEVER  
1/8" X 1 1/16" ALUMINUM SHIM ATTACHED WITH #8 X 1 1/2" COUNTERSUNK S.M.S.

**HORIZONTAL CROSS SECTION**

SIGNED: 04/27/2021

**SOLAR INNOVATIONS, INC.**  
31 ROBERTS RD.  
PINE GROVE, PA 17963

SI 33350 G3 IMPACT FGW 3.5' X 9.5' PANEL  
LITE RAIL OUT-FOLD ALUMINUM  
CROSS SECTIONS

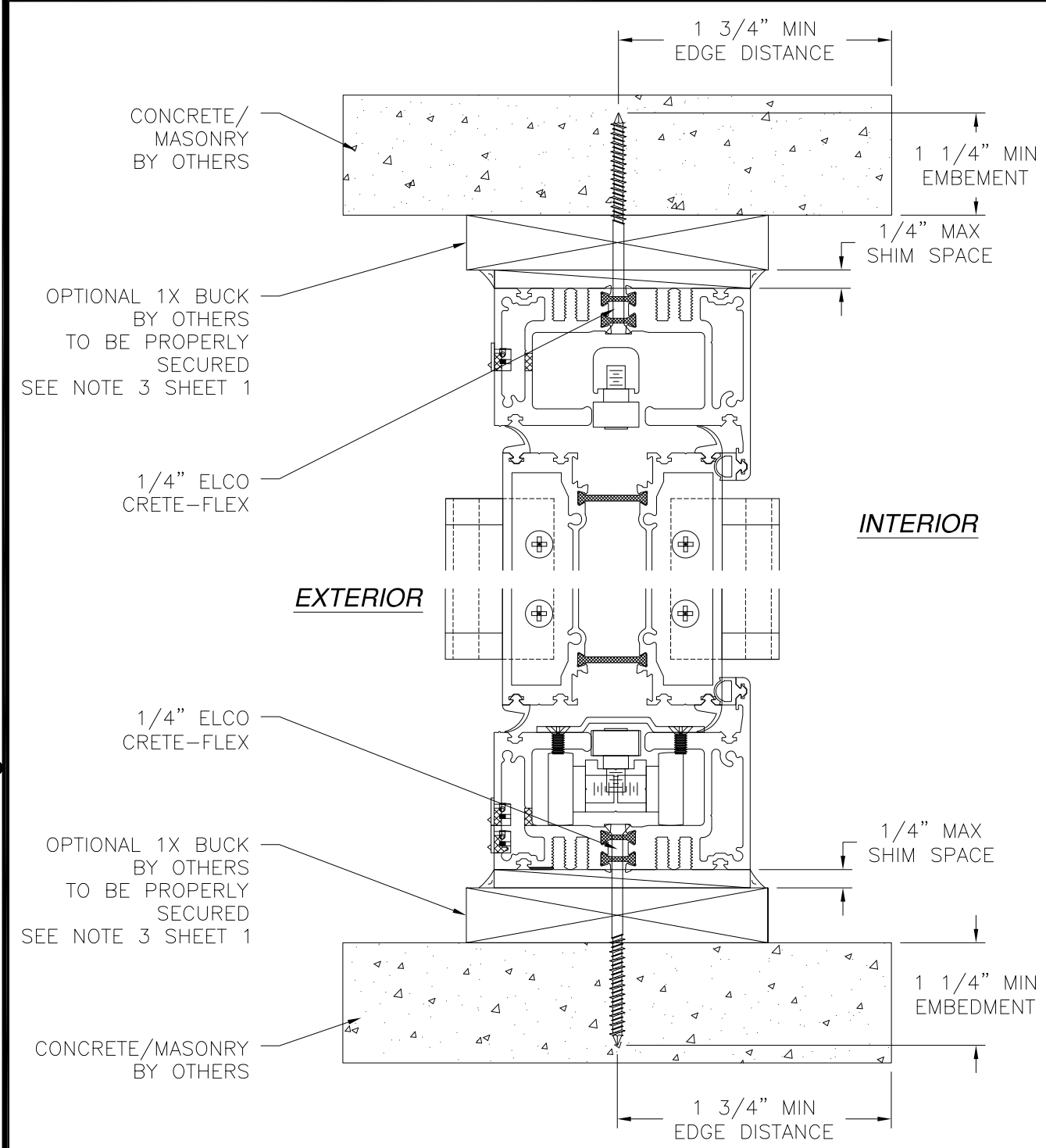
DRAWN: N.G.	DWG NO. 08-02650	REV A
SCALE NTS	DATE 03/19/15	SHEET 5 OF 9

L. ROBERTO LOMAS P.E.  
1432 WOODFORD RD LEWISVILLE, NC 27023  
434-688-0609 rllomas@rlomaspe.com

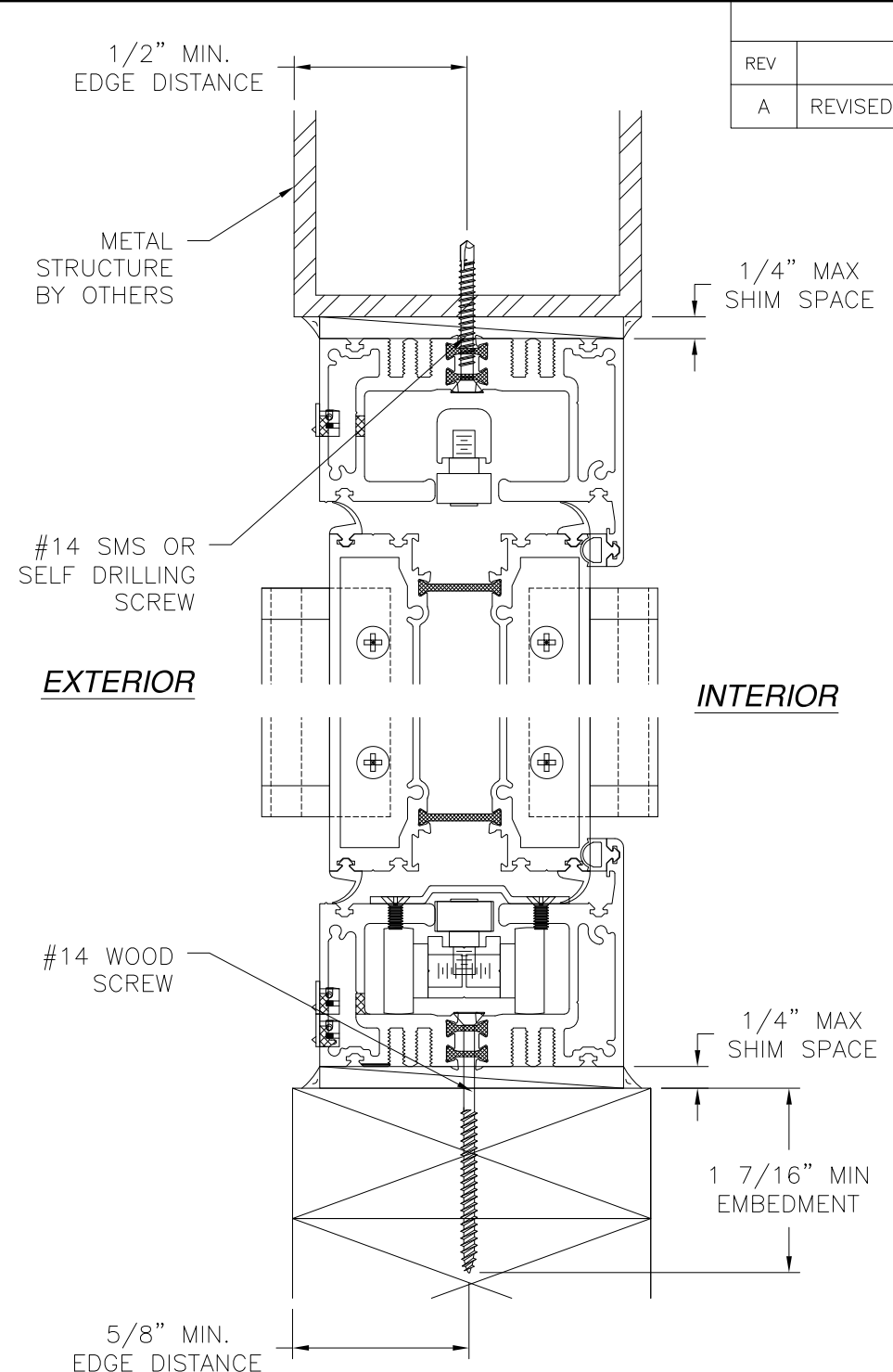


Luis R. Lomas P.E.  
TX No.: 101889

REVISIONS			
REV	DESCRIPTION	DATE	APPROVED
A	REVISED PER NEW REQUIREMENTS	02/17/2020	R.L.



**VERTICAL CROSS SECTION**  
CONCRETE/MASONRY INSTALLATION



**VERTICAL CROSS SECTION**  
WOOD FRAMING OR 2X BUCK  
OR METAL STRUCTURE INSTALLATION

**NOTES:**  
1. INTERIOR AND EXTERIOR FINISHES, BY OTHERS, NOT SHOWN FOR CLARITY.  
2. PERIMETER AND JOINT SEALANT BY OTHERS TO BE DESIGNED IN ACCORDANCE WITH ASTM E2112

**SOLAR INNOVATIONS, INC.**  
31 ROBERTS RD.  
PINE GROVE, PA 17963

SI 33350 G3 IMPACT FGW 3.5' X 9.5' PANEL  
LITE RAIL OUT-FOLD ALUMINUM  
INSTALLATION DETAILS

DRAWN: N.G.	DWG NO. 08-02650	REV A
SCALE NTS	DATE 03/19/15	SHEET 6 OF 9

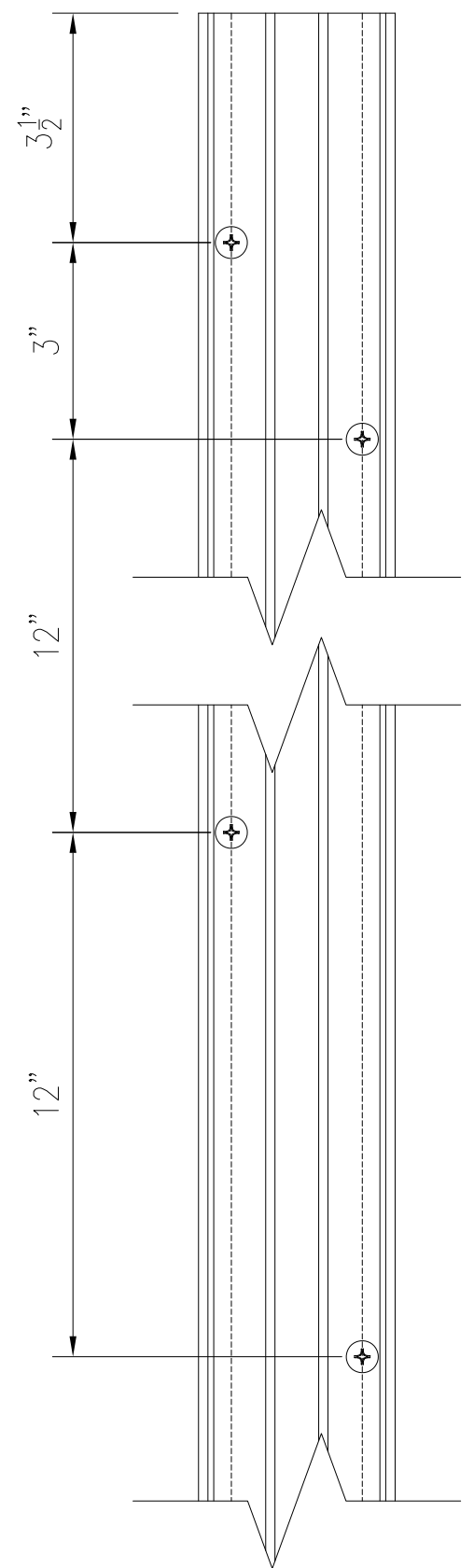
L. ROBERTO LOMAS P.E.  
1432 WOODFORD RD LEWISVILLE, NC 27023  
434-688-0609 rllomas@rlomaspe.com

SIGNED: 04/27/2021

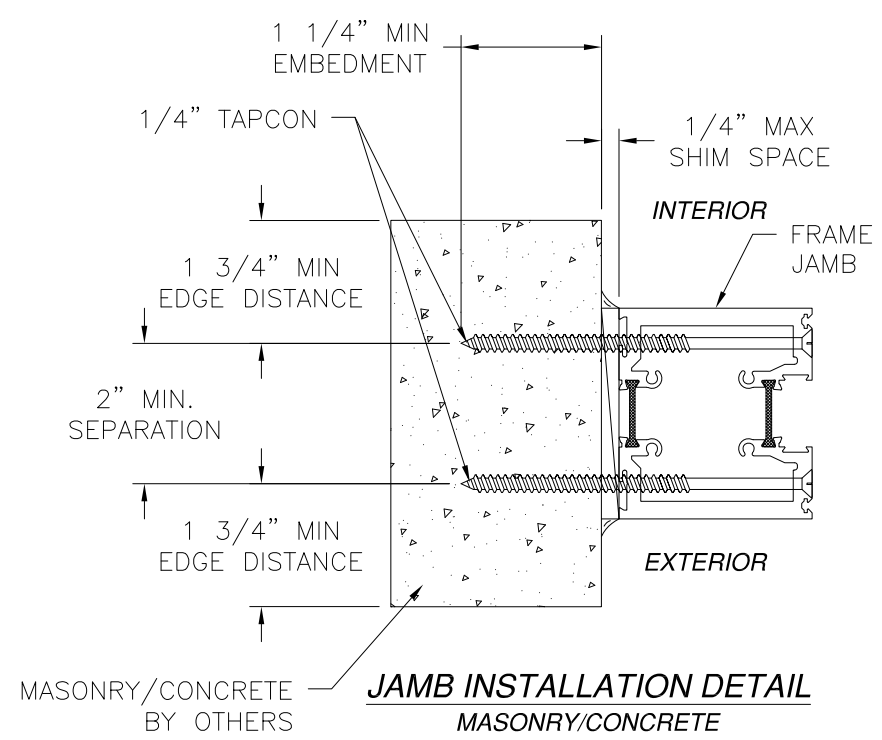


Luis R. Lomas P.E.  
TX No.: 101889

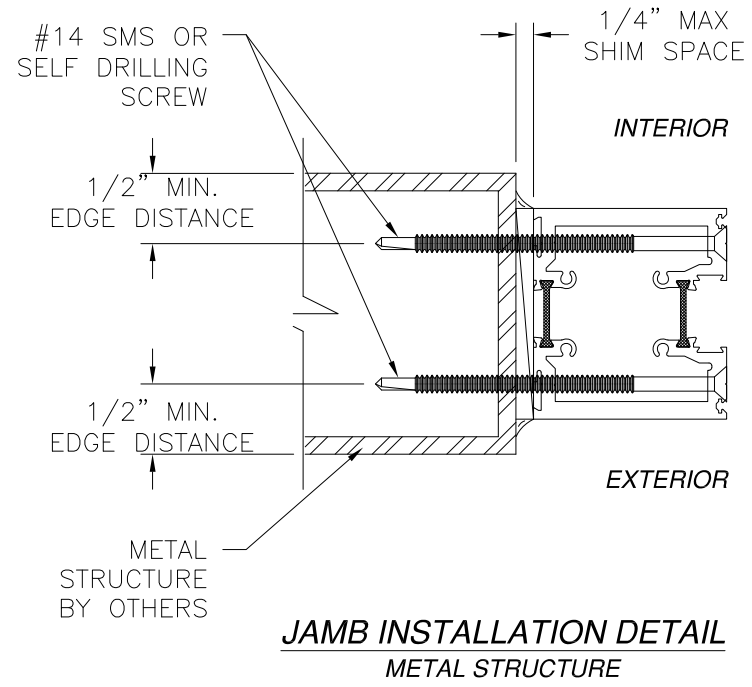
REVISIONS			
REV	DESCRIPTION	DATE	APPROVED
A	REVISED PER NEW REQUIREMENTS	02/17/2020	R.L.



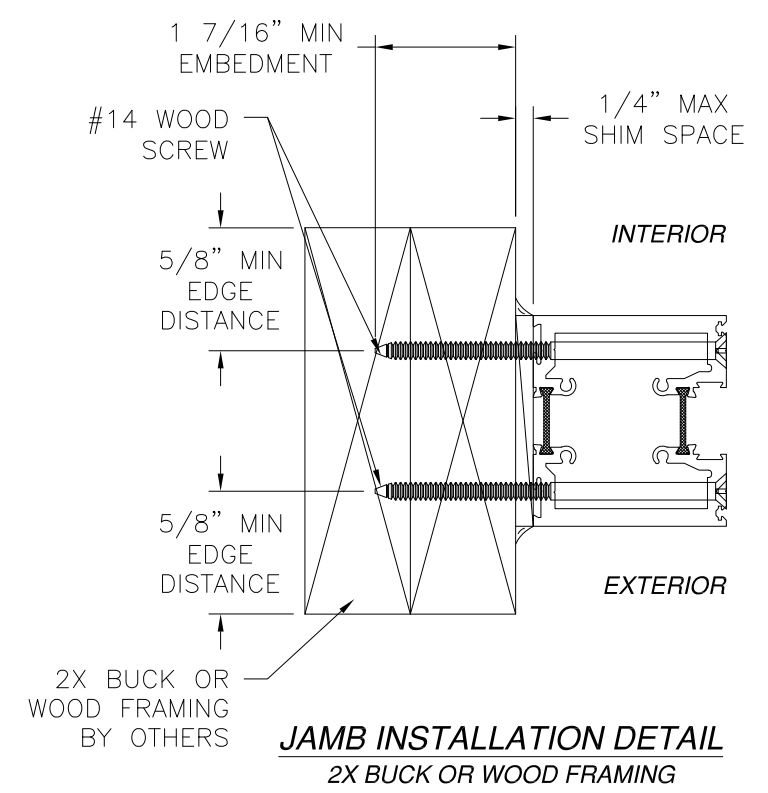
**JAMB ANCHOR LOCATIONS  
DETAIL**



**JAMB INSTALLATION DETAIL  
MASONRY/CONCRETE**



**JAMB INSTALLATION DETAIL  
METAL STRUCTURE**



**JAMB INSTALLATION DETAIL  
2X BUCK OR WOOD FRAMING**

- NOTES:**
1. INTERIOR AND EXTERIOR FINISHES, BY OTHERS, NOT SHOWN FOR CLARITY.
  2. PERIMETER AND JOINT SEALANT BY OTHERS TO BE DESIGNED IN ACCORDANCE WITH ASTM E2112

SIGNED: 04/27/2021

**SOLAR INNOVATIONS, INC.**  
31 ROBERTS RD.  
PINE GROVE, PA 17963

SI 33350 G3 IMPACT FGW 3.5' X 9.5' PANEL  
LITE RAIL OUT-FOLD ALUMINUM  
INSTALLATION DETAILS

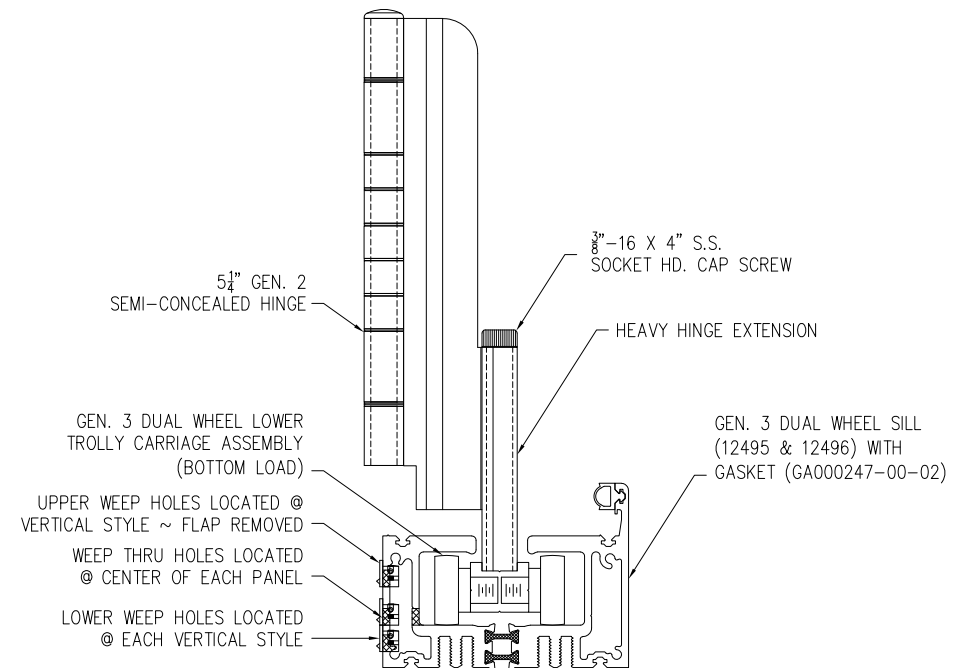
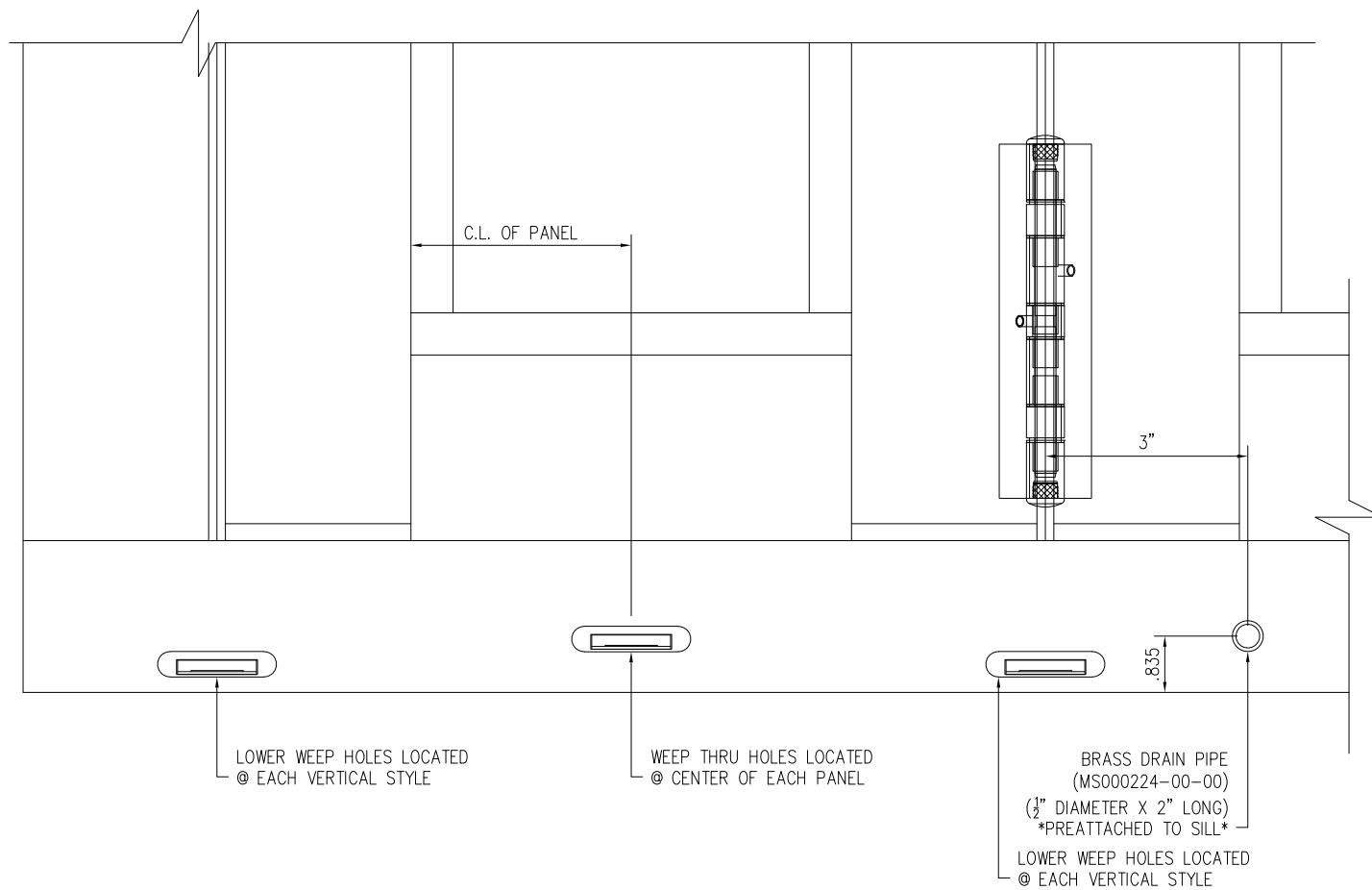
DRAWN: N.G.	DWG NO. 08-02650	REV A
SCALE NTS	DATE 03/19/15	SHEET 7 OF 9

L. ROBERTO LOMAS P.E.  
1432 WOODFORD RD LEWISVILLE, NC 27023  
434-688-0609 rllomas@rlomaspe.com



Luis R. Lomas P.E.  
TX No.: 101889

REVISIONS			
REV	DESCRIPTION	DATE	APPROVED
A	REVISED PER NEW REQUIREMENTS	02/17/2020	R.L.



WEEP HOLES DETAILS

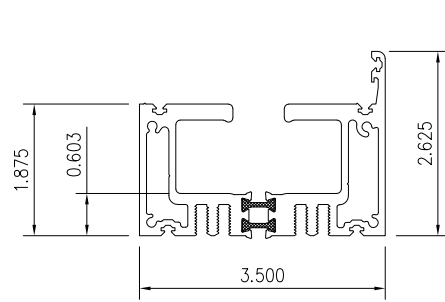
SIGNED: 04/27/2021

<b>SOLAR INNOVATIONS, INC.</b> 31 ROBERTS RD. PINE GROVE, PA 17963		
SI 33350 G3 IMPACT FGW 3.5' X 9.5' PANEL LITE RAIL OUT-FOLD ALUMINUM WEEP HOLES DETAILS		
DRAWN: N.G.	DWG NO. 08-02650	REV A
SCALE NTS	DATE 03/19/15	SHEET 8 OF 9
L. ROBERTO LOMAS P.E. 1432 WOODFORD RD LEWISVILLE, NC 27023 434-688-0609 rllomas@lrlomaspe.com		

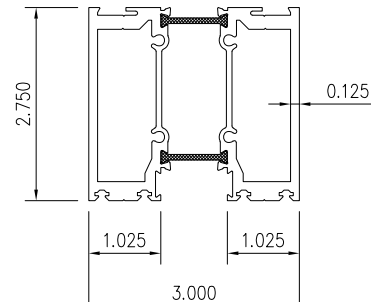


Luis R. Lomas P.E.  
TX No.: 101889

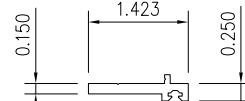




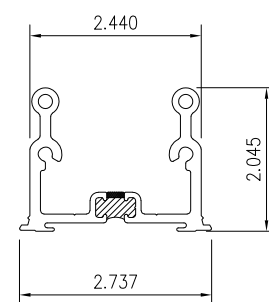
1 DUAL WHEEL  
HEAD / SILL



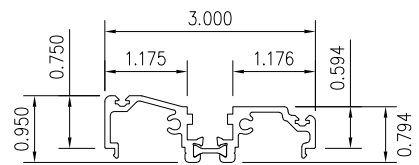
2 FRAME



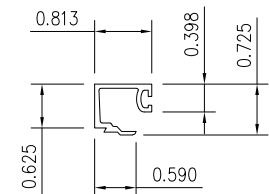
3 FRAME  
CAP



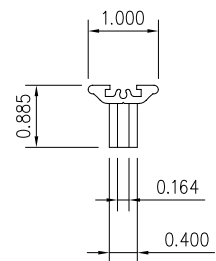
4 FRAME  
LUG



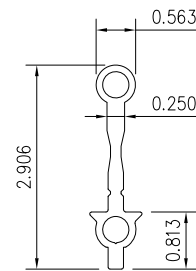
5 3rd GENERATION  
DOOR ADAPTOR



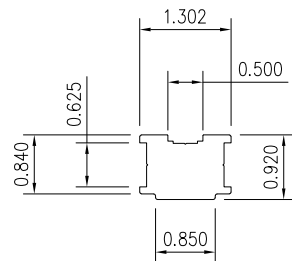
6 1/4" GLASS  
STOP



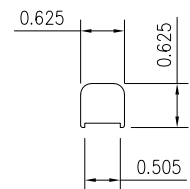
7 2nd GENERATION  
HANDLE



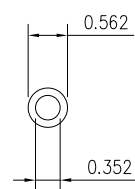
8 HINGE  
EXTENSION



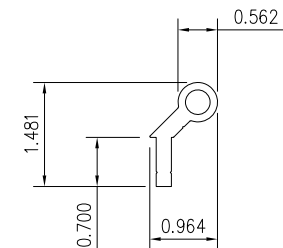
9 TROLLEY  
BODY



10 IDLER  
BODY



11 HINGE  
BARREL



12 5 1/4" SEMI-  
CONCEALED HINGE

REVISIONS			
REV	DESCRIPTION	DATE	APPROVED
A	REVISED PER NEW REQUIREMENTS	02/17/2020	R.L.

SIGNED: 04/27/2021

SOLAR INNOVATIONS, INC.  
31 ROBERTS RD.  
PINE GROVE, PA 17963

SI 33350 G3 IMPACT FGW 3.5' X 9.5' PANEL  
LITE RAIL OUT-FOLD ALUMINUM  
COMPONENTS

DRAWN: N.G.	DWG NO. 08-02650	REV A
SCALE NTS	DATE 03/19/15	SHEET 9 OF 9

L. ROBERTO LOMAS P.E.  
1432 WOODFORD RD LEWISVILLE, NC 27023  
434-688-0609 rllomas@rlomaspe.com



Luis R. Lomas P.E.  
TX No.: 101889