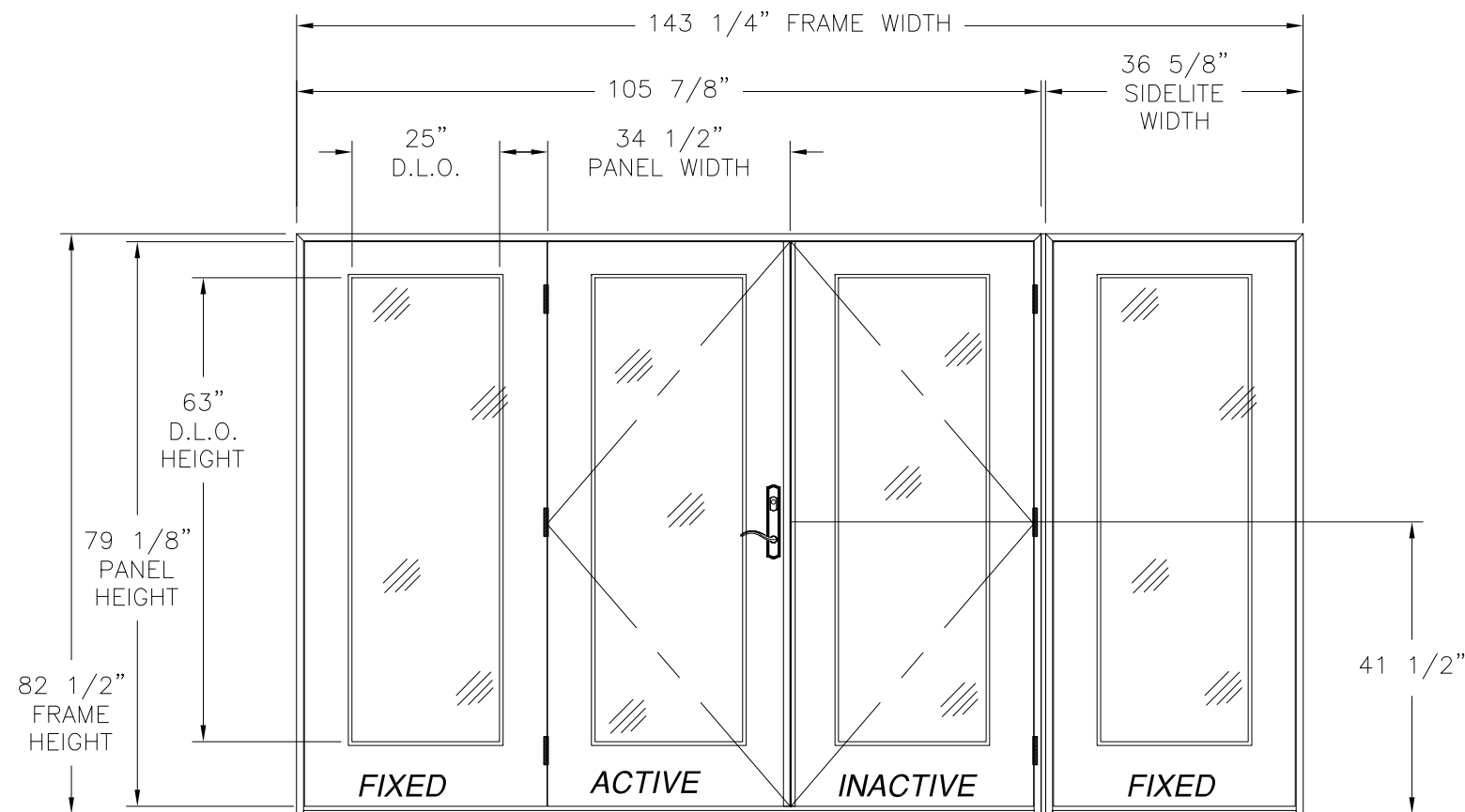


REVISIONS			
REV	DESCRIPTION	DATE	APPROVED
A	UPDATED HARDWARE	10/17/18	R.L.
B	REVISED PER NEW REQUIREMENTS	12/10/19	R.L.



**IN-SWING ENTRANCE  
DOUBLE DOOR W/ SIDELITES  
EXTERIOR VIEW**

DESIGN PRESSURE RATING	IMPACT RATING
±60.0PSF	NONE

OXX/O CONFIGURATION SHOWN, CONFIGURATIONS LISTED IN NOTE 9 ARE APPROVED AS LONG AS INDIVIDUAL PANEL AREA DOES NOT EXCEED 18.95 FT<sup>2</sup>

**NOTES:**

1. THE PRODUCT SHOWN HEREIN IS DESIGNED AND MANUFACTURED TO COMPLY WITH REQUIREMENTS OF THE 2006 IBC, 2006 IRC WITH STATE OF TEXAS MODIFICATIONS AND WITH THE 2015 IBC, 2015 IRC, 2018 IBC AND 2018 IRC.
2. WOOD FRAMING AND MASONRY OPENING TO BE DESIGNED AND ANCHORED TO PROPERLY TRANSFER ALL LOADS TO STRUCTURE. FRAMING AND MASONRY OPENING IS THE RESPONSIBILITY OF THE ARCHITECT OR ENGINEER OF RECORD.
3. 1X BUCK OVER MASONRY/CONCRETE IS OPTIONAL. WHERE 1X BUCK IS NOT USED DISSIMILAR MATERIALS MUST BE SEPARATED WITH APPROVED COATING OR MEMBRANE. SELECTION OF COATING OR MEMBRANE IS THE RESPONSIBILITY OF THE ARCHITECT OR ENGINEER OF RECORD.
4. UNITS MUST BE GLAZED PER ASTM E1300-04/09, SEE SHEET 5 FOR GLASS OPTIONS.
5. APPROVED IMPACT PROTECTIVE SYSTEM IS REQUIRED FOR THIS PRODUCT IN WIND BORNE DEBRIS REGIONS.
6. FRAME JAMB AND HEAD MATERIAL: CO-EXTRUDED PVC FOAM 1 1/2" THICK.
7. FRAME SILL MATERIAL: CO-EXTRUDED PVC FOAM 2" THICK WITH ALUMINUM CLADDING .063" THICK.
8. DOOR PANEL AND SIDELITE MATERIAL: .075" THICK FIBERGLASS SKIN WITH PVC FOAM TOP AND BOTTOM RAILS, AND PVC FOAM VERTICAL STILES WITH PINE REINFORCEMENTS AND POLYURETHANE FOAM CORE.
9. APPROVED CONFIGURATIONS: O, X, OX, XO, XX, OXO, XXO, OXX, OXXO, O/X, XX/O, OXX/O AND O/XX/O SEE SHEET 2.
10. HINGES LOCATED AT 8", 39 3/4" AND 71 1/2" FROM BOTTOM OF PANEL

TABLE OF CONTENTS	
SHEET NO.	DESCRIPTION
1	ELEVATION AND NOTES
2	ADDITIONAL CONFIGURATIONS AND HARDWARE
3 - 4	ANCHORING LAYOUTS
5 - 8	INSTALLATION DETAILS
9	COMPONENTS

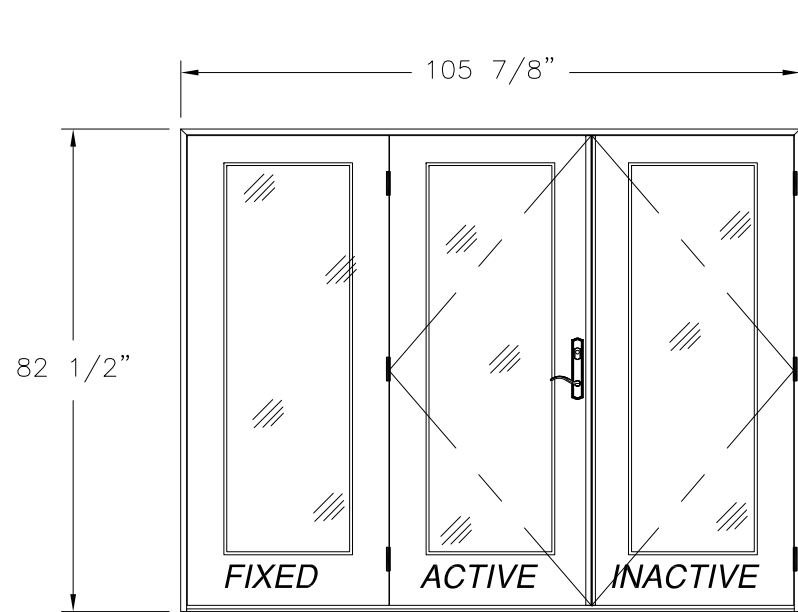
<b>NAN YA PLASTICS CORP. USA</b> 8989 NORTH LOOP EAST HOUSTON, TX 77029		
<b>IN-SWING ENTRANCE DOOR W/ &amp; W/O SIDELITES OXXO ELEVATION AND NOTES</b>		
DRAWN: L.M.P.	DWG NO. 08-01537	REV B
SCALE NTS	DATE 04/16/12	SHEET 1 OF 9
L. ROBERTO LOMAS P.E. 1432 WOODFORD RD LEWISVILLE, NC 27023 434-688-0609 rllomas@rlomaspe.com		

**SIGNED: 01/15/2020**

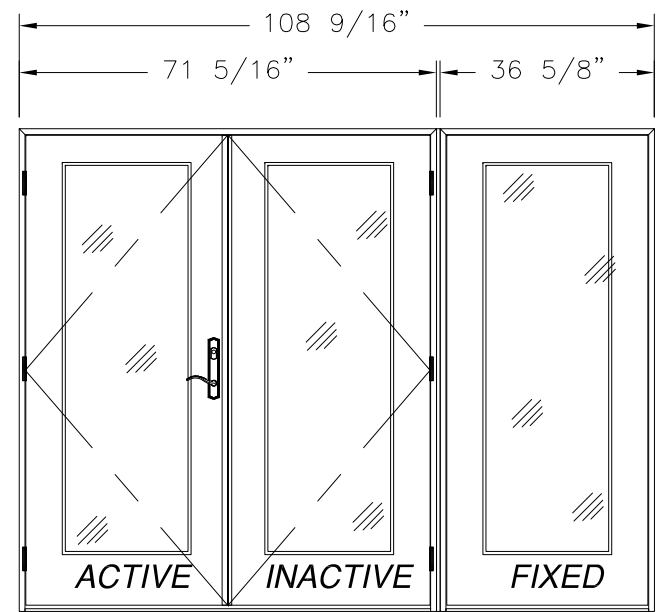


Luis R. Lomas P.E.  
TX No.: 101889

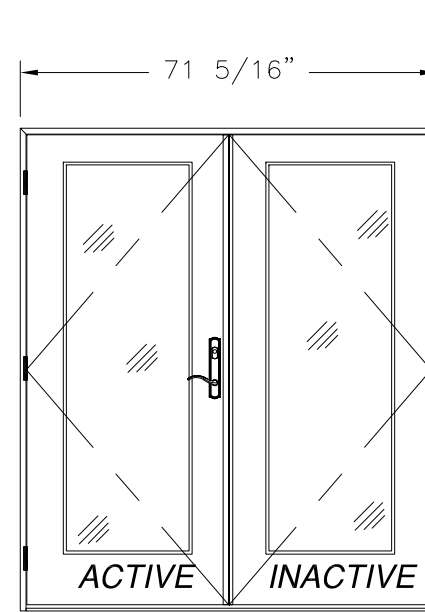
REVISIONS			
REV	DESCRIPTION	DATE	APPROVED
A	UPDATED HARDWARE	10/17/18	R.L.
B	REVISED PER NEW REQUIREMENTS	12/10/19	R.L.



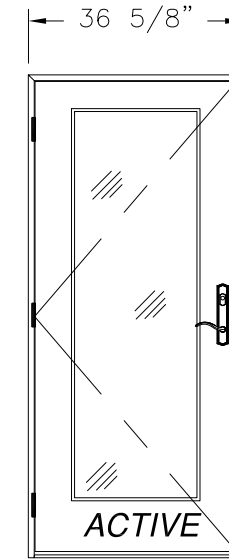
**DOUBLE W/SIDELITE**  
EXTERIOR VIEW



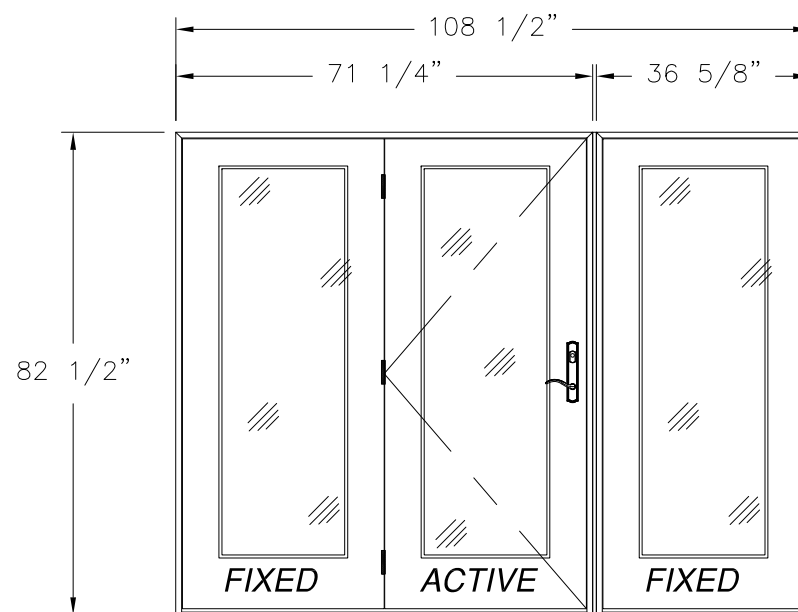
**DOUBLE W/SIDELITE (MULL)**  
EXTERIOR VIEW



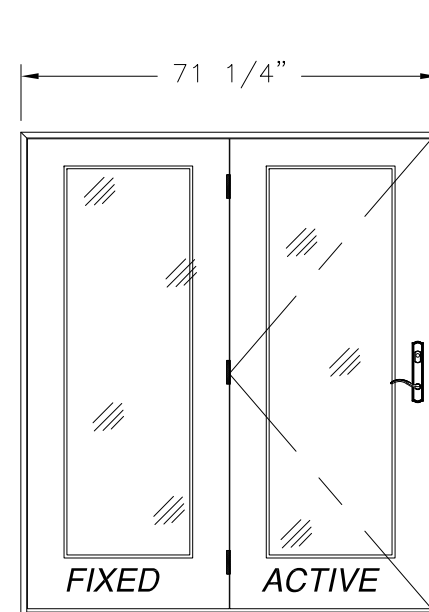
**DOUBLE**  
EXTERIOR VIEW



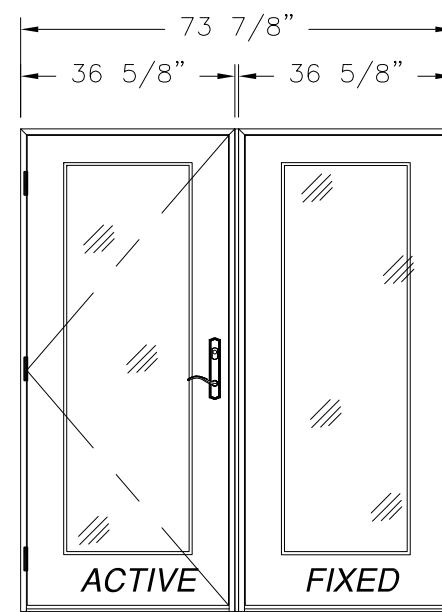
**SINGLE**  
EXTERIOR VIEW



**SINGLE W/SIDELITE (MULL)**  
EXTERIOR VIEW



**SINGLE W/SIDELITE**  
EXTERIOR VIEW



**SINGLE W/SIDELITE (MULL)**  
EXTERIOR VIEW

SIGNED: 01/15/2020

NOTE:  
ALL APPROVED CONFIGURATIONS ARE SHOWN AS LEFT HAND ACTIVE, RIGHT HAND ACTIVE IS ALSO APPROVED.

**HARDWARE SCHEDULE**

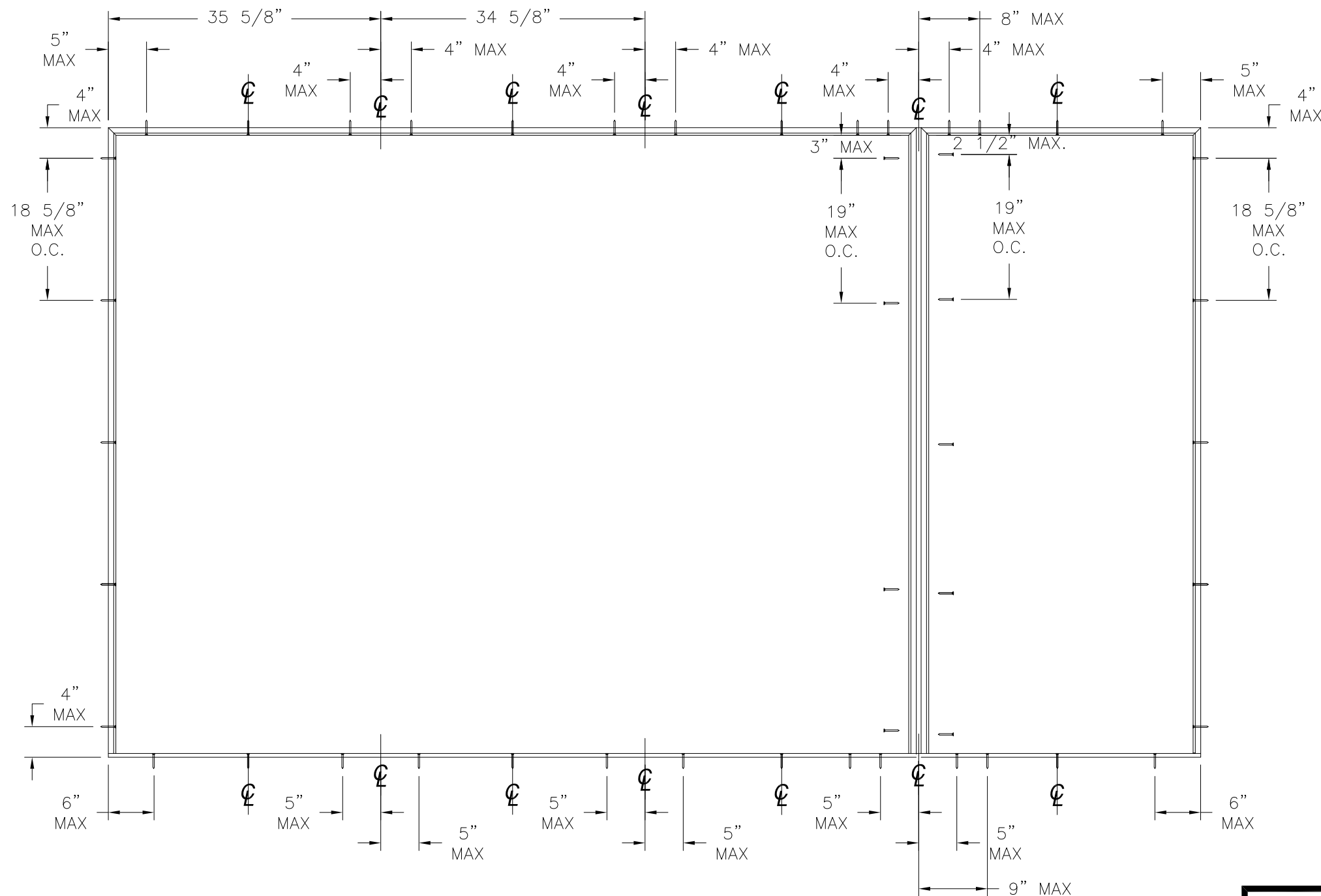
A.	1 POINT LOCK BY NINGBO MICOTA (ACTIVE PANEL)
C.	(3) 4" X 4" BUTT HINGES BY NINGBO MICOTA (ACTIVE AND INACTIVE)
D.	ALUMINUM & PVC FOAM ASTRAGAL BY NAN YA PLASTICS
E.	ALUMINUM & PVC FOAM MULLION BY NAN YA PLASTICS

<p>NAN YA PLASTICS CORP. USA 8989 NORTH LOOP EAST HOUSTON, TX 77029</p>		
<p>IN-SWING ENTRANCE DOOR W/ &amp; W/O SIDELITES ADDITIONAL CONFIGURATIONS AND HARDWARE</p>		
<p>DRAWN: L.M.P.</p>	<p>DWG NO. 08-01537</p>	<p>REV B</p>
<p>SCALE NTS</p>	<p>DATE 04/16/12</p>	<p>SHEET 2 OF 9</p>
<p>L. ROBERTO LOMAS P.E. 1432 WOODFORD RD LEWISVILLE, NC 27023 434-688-0609 rllomas@rlomaspe.com</p>		



Luis R. Lomas P.E.  
TX No.: 101889

REVISIONS			
REV	DESCRIPTION	DATE	APPROVED
A	UPDATED HARDWARE	10/17/18	R.L.
B	REVISED PER NEW REQUIREMENTS	12/10/19	R.L.



ANCHORING NOTES:

- 1) SHIM AS REQUIRED AT EACH INSTALLATION ANCHOR WITH LOAD BEARING SHIM. SHIM WHERE SPACE OF 1/16" OR GREATER OCCURS. MAXIMUM ALLOWABLE SHIM STACK TO BE 1/4".
- 2) FOR ANCHORING INTO MASONRY/CONCRETE USE 3/16" TAPCON OF SUFFICIENT LENGTH TO ACHIEVE A 1 1/4" MINIMUM EMBEDMENT INTO SUBSTRATE. LOCATE ANCHORS AS SHOWN IN ANCHORING LAYOUT AND INSTALLATION DETAILS.
- 3) FOR ANCHORING INTO 2X BUCK OR WOOD FRAMING USE #10 WOOD SCREW OF SUFFICIENT LENGTH TO ACHIEVE A 1 3/8" MINIMUM EMBEDMENT INTO SUBSTRATE. LOCATE ANCHORS AS SHOWN IN ANCHORING LAYOUT AND INSTALLATION DETAILS.
- 4) ALL FASTENERS TO BE CORROSION RESISTANT.
- 5) INSTALLATION ANCHORS SHALL BE INSTALLED IN ACCORDANCE WITH ANCHOR MANUFACTURER'S INSTALLATION INSTRUCTIONS, AND ANCHORS SHALL NOT BE USED IN SUBSTRATES WITH STRENGTHS LESS THAN THE MINIMUM STRENGTH SPECIFIED BELOW:  
 A. WOOD – MINIMUM SPECIFIC GRAVITY OF G=0.42  
 B. CONCRETE – MINIMUM COMPRESSIVE STRENGTH OF 3,200 PSI.  
 C. MASONRY – GROUT FILLED BLOCK PER ASTM C90 WITH Fm=2,000PSI MINIMUM.

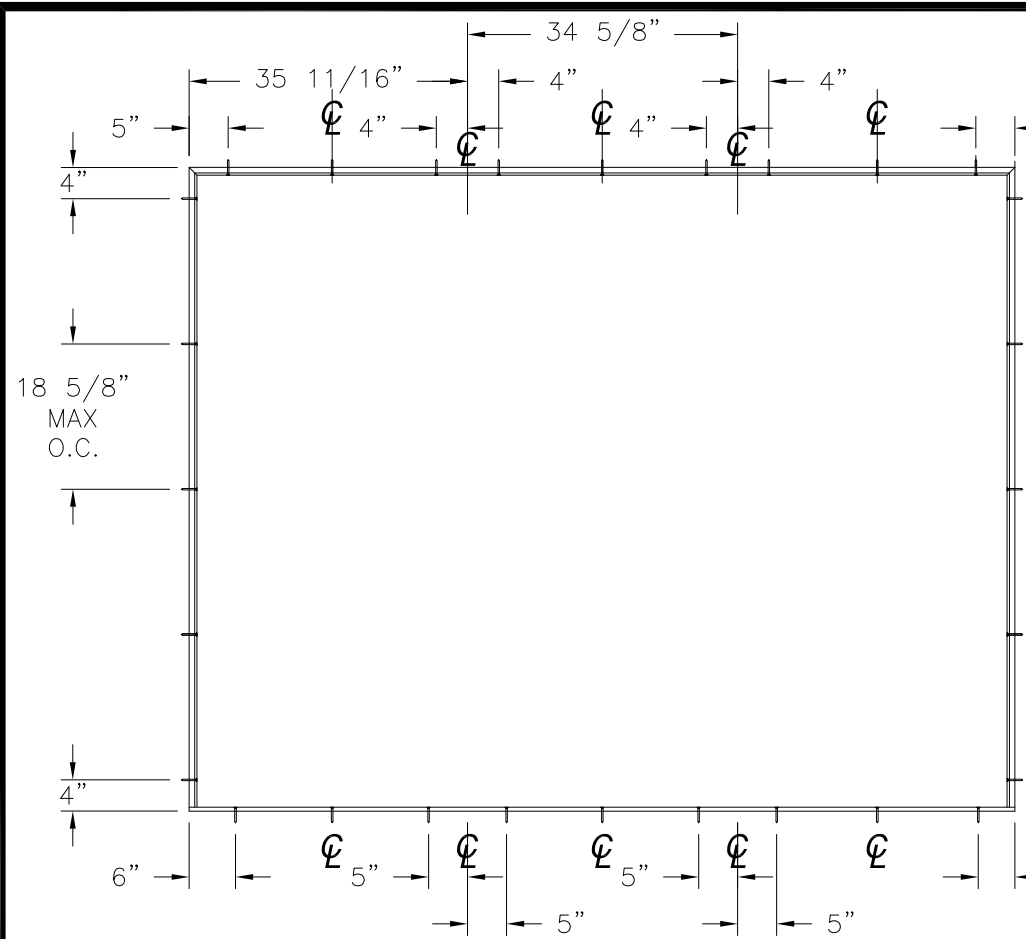
ANCHORING LAYOUT

SIGNED: 01/15/2020

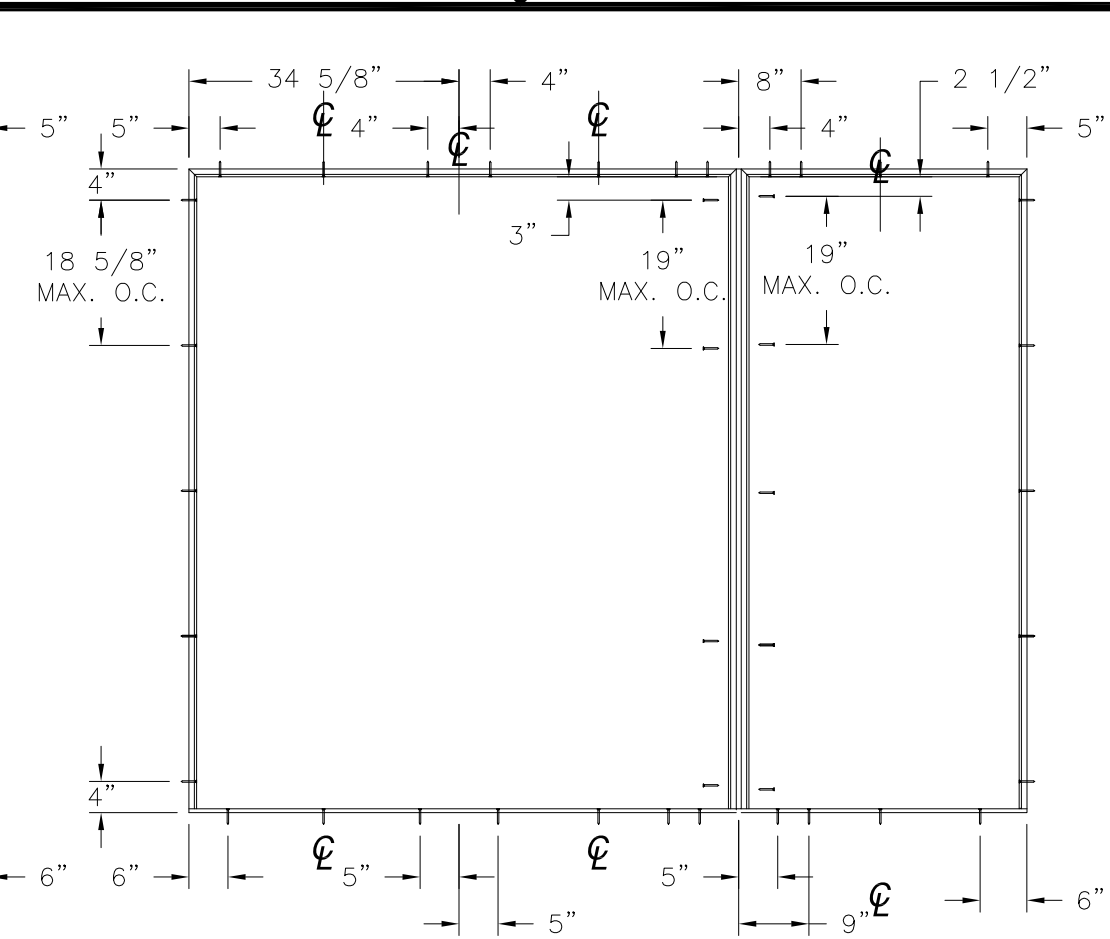
NAN YA PLASTICS CORP. USA 8989 NORTH LOOP EAST HOUSTON, TX 77029		
IN-SWING ENTRANCE DOOR W/ & W/O SIDELITES ANCHORING LAYOUTS		
DRAWN: L.M.P.	DWG NO. 08-01537	REV B
SCALE NTS	DATE 04/16/12	SHEET 3 OF 9
L. ROBERTO LOMAS P.E. 1432 WOODFORD RD LEWISVILLE, NC 27023 434-688-0609 rllomas@rlomaspe.com		



Luis R. Lomas P.E.  
 TX No.: 101889

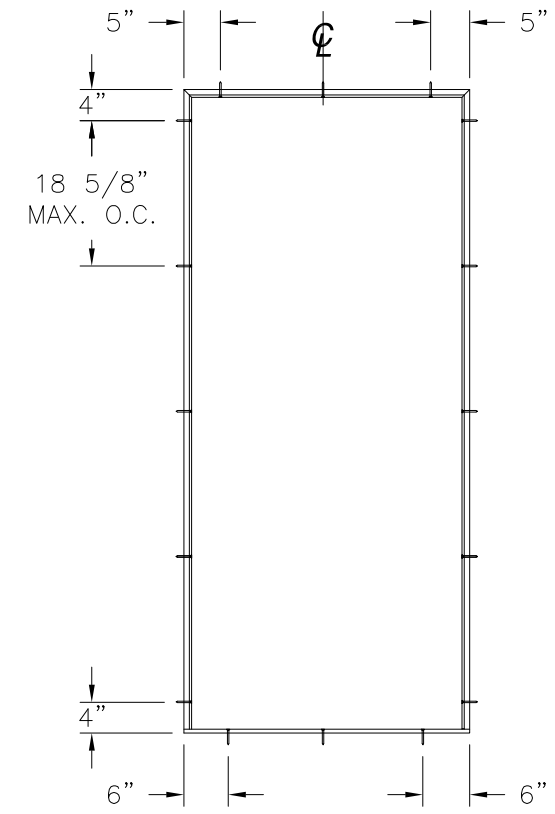


**ANCHORING LAYOUT FOR OXO, XXO AND OXX**

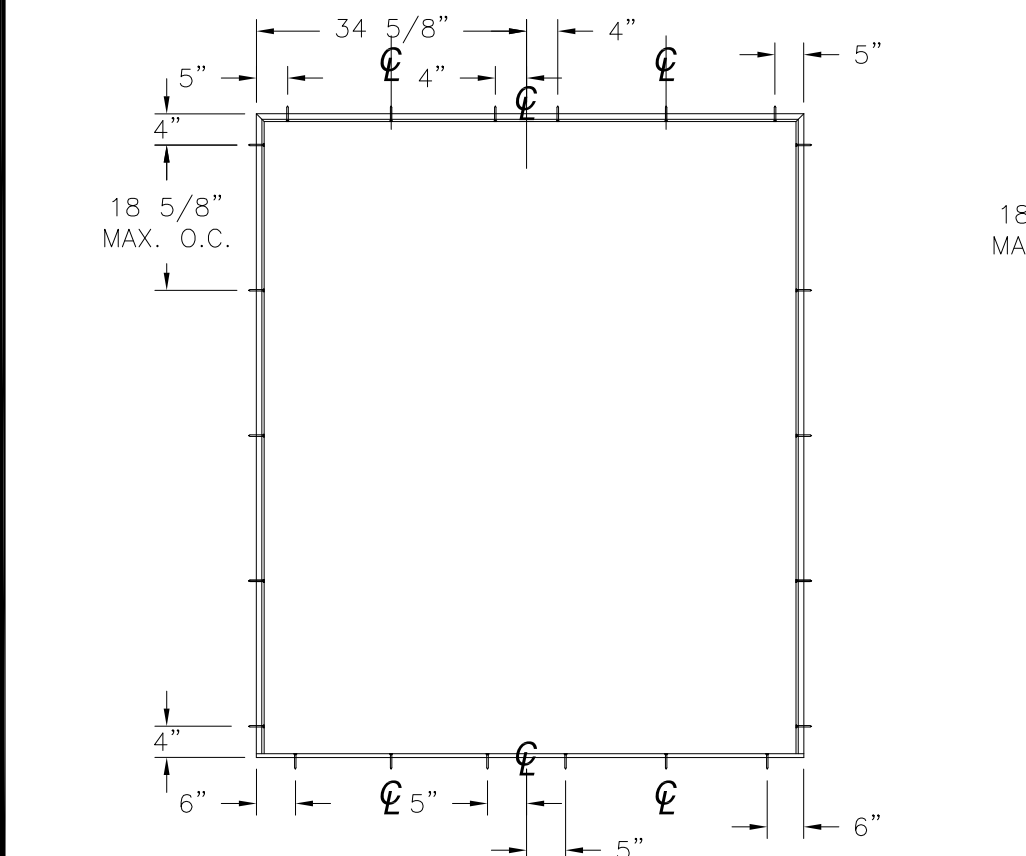


**ANCHORING LAYOUT FOR OXO, XXO AND OXX (MULL)**

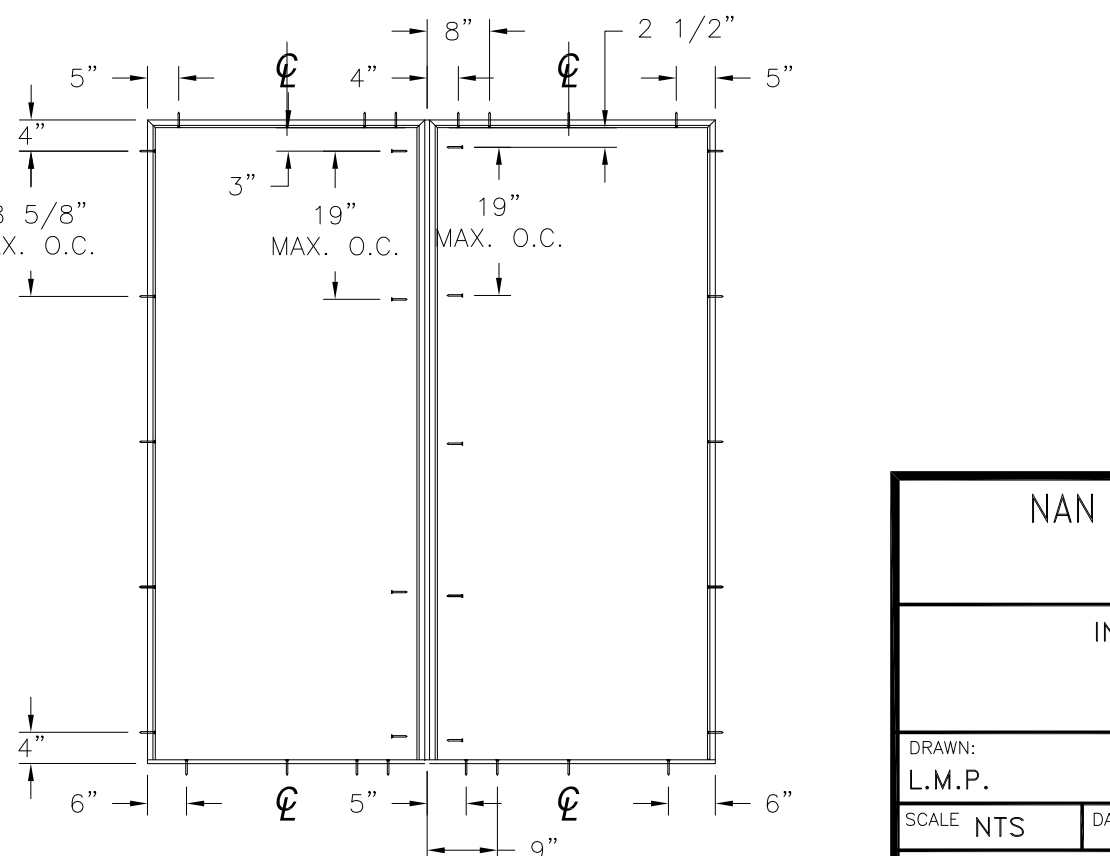
REVISIONS			
REV	DESCRIPTION	DATE	APPROVED
A	UPDATED HARDWARE	10/17/18	R.L.
B	REVISED PER NEW REQUIREMENTS	12/10/19	R.L.



**ANCHORING LAYOUT FOR X**



**ANCHORING LAYOUT FOR XX, OX AND XO**



**ANCHORING LAYOUT FOR OX AND XO (MULL)**

NAN YA PLASTICS CORP. USA  
 8989 NORTH LOOP EAST  
 HOUSTON, TX 77029

IN-SWING ENTRANCE DOOR  
 W/ & W/O SIDELITES  
 ANCHORING LAYOUTS

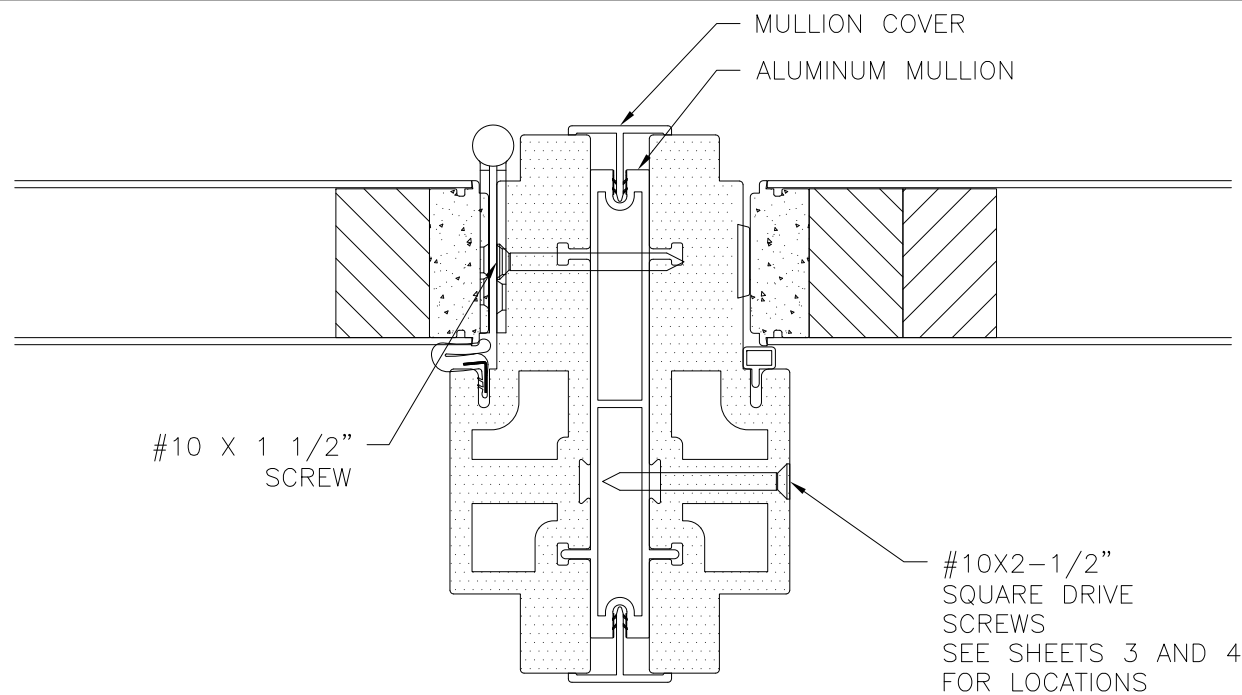
DRAWN: L.M.P.	DWG NO. 08-01537	REV B
SCALE NTS	DATE 04/16/12	SHEET 4 OF 9

L. ROBERTO LOMAS P.E.  
 1432 WOODFORD RD LEWISVILLE, NC 27023  
 434-688-0609 rllomas@rlomaspe.com

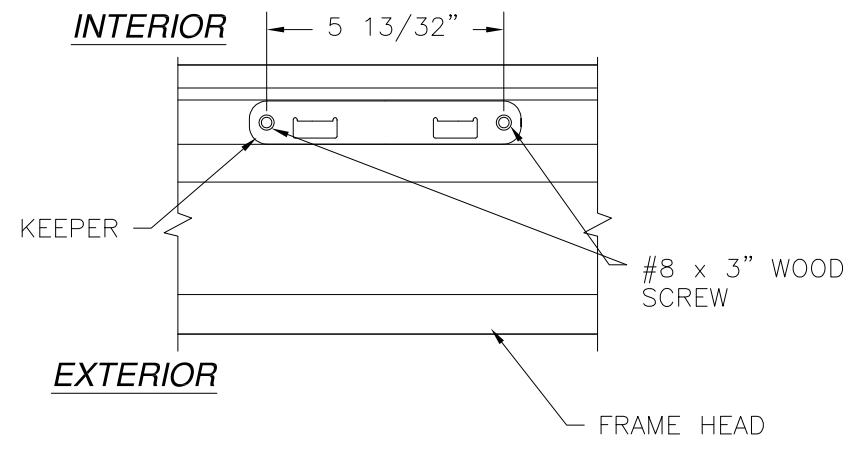
SIGNED: 01/15/2020



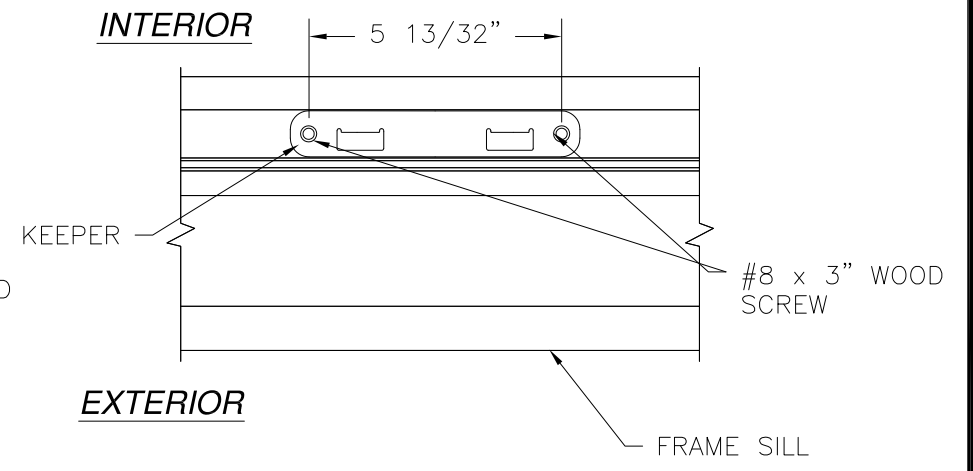
Luis R. Lomas P.E.  
 TX No.: 101889



**MULLION DETAIL**

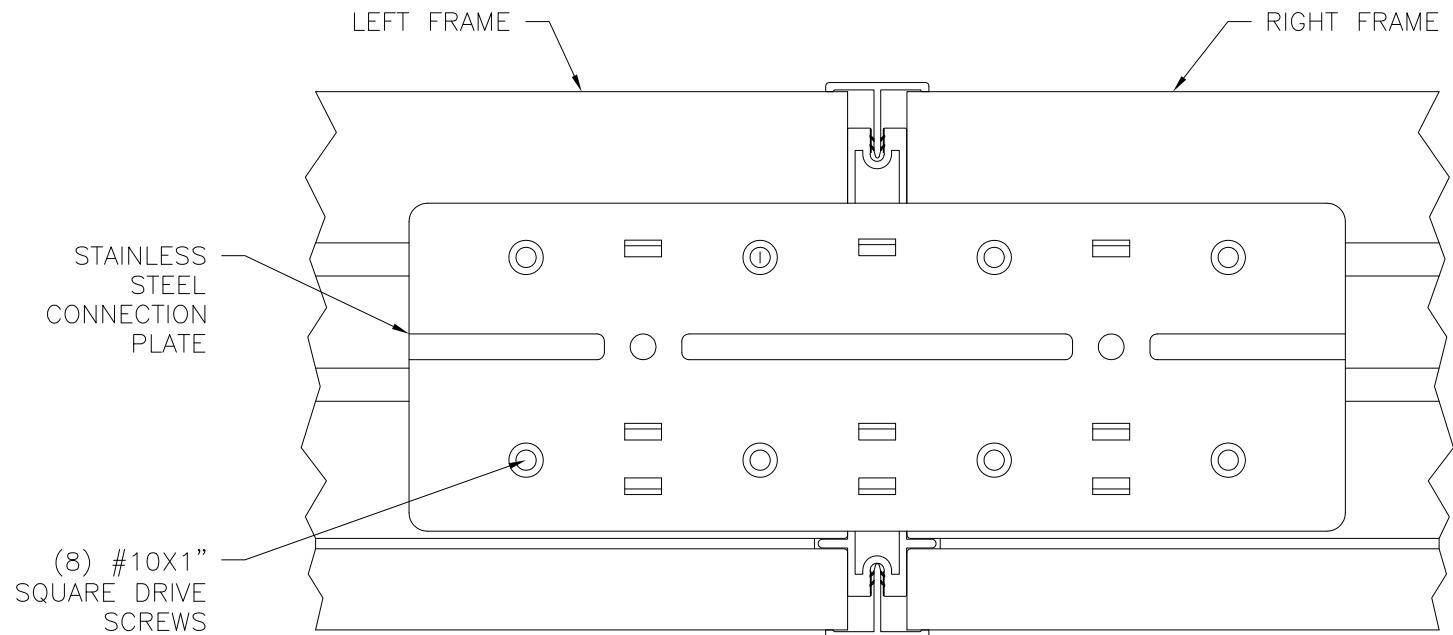


**HEAD KEEPER DETAIL**

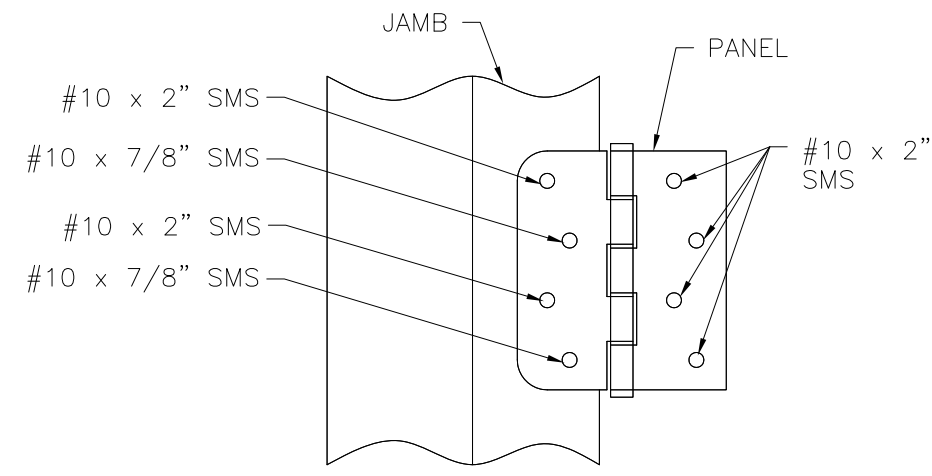


**SILL KEEPER DETAIL**

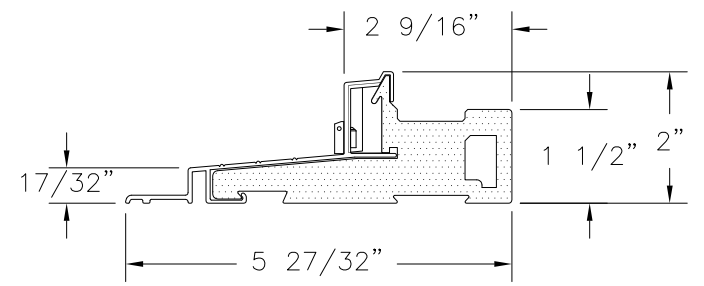
REVISIONS			
REV	DESCRIPTION	DATE	APPROVED
A	UPDATED HARDWARE	10/17/18	R.L.
B	REVISED PER NEW REQUIREMENTS	12/10/19	R.L.



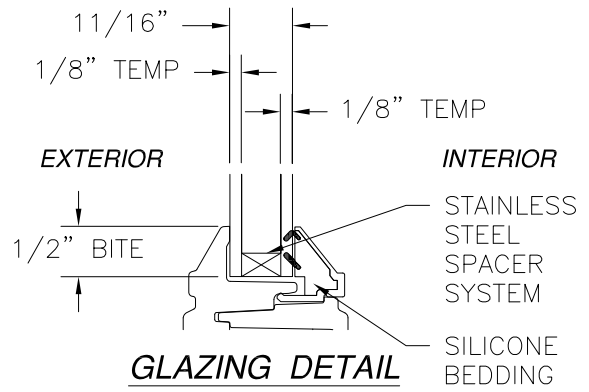
**FRAME CONNECTION DETAIL**



**HINGE INSTALLATION DETAIL**



**DOOR SILL**



**GLAZING DETAIL**

SIGNED: 01/15/2020

NAN YA PLASTICS CORP. USA  
 8989 NORTH LOOP EAST  
 HOUSTON, TX 77029

IN-SWING ENTRANCE DOOR  
 W/ & W/O SIDELITES  
 INSTALLATION DETAILS

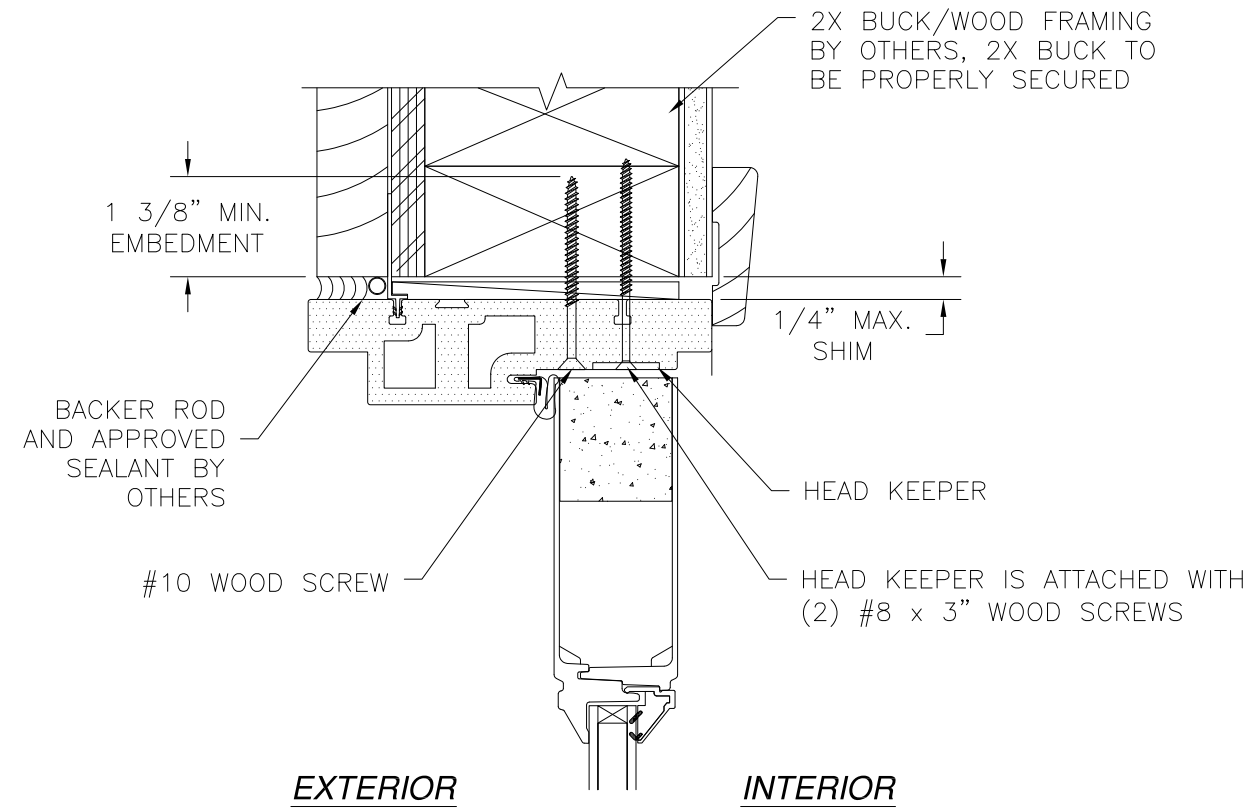
DRAWN: L.M.P.	DWG NO. 08-01537	REV B
SCALE NTS	DATE 04/16/12	SHEET 5 OF 9

L. ROBERTO LOMAS P.E.  
 1432 WOODFORD RD LEWISVILLE, NC 27023  
 434-688-0609 rllomas@rlomaspe.com

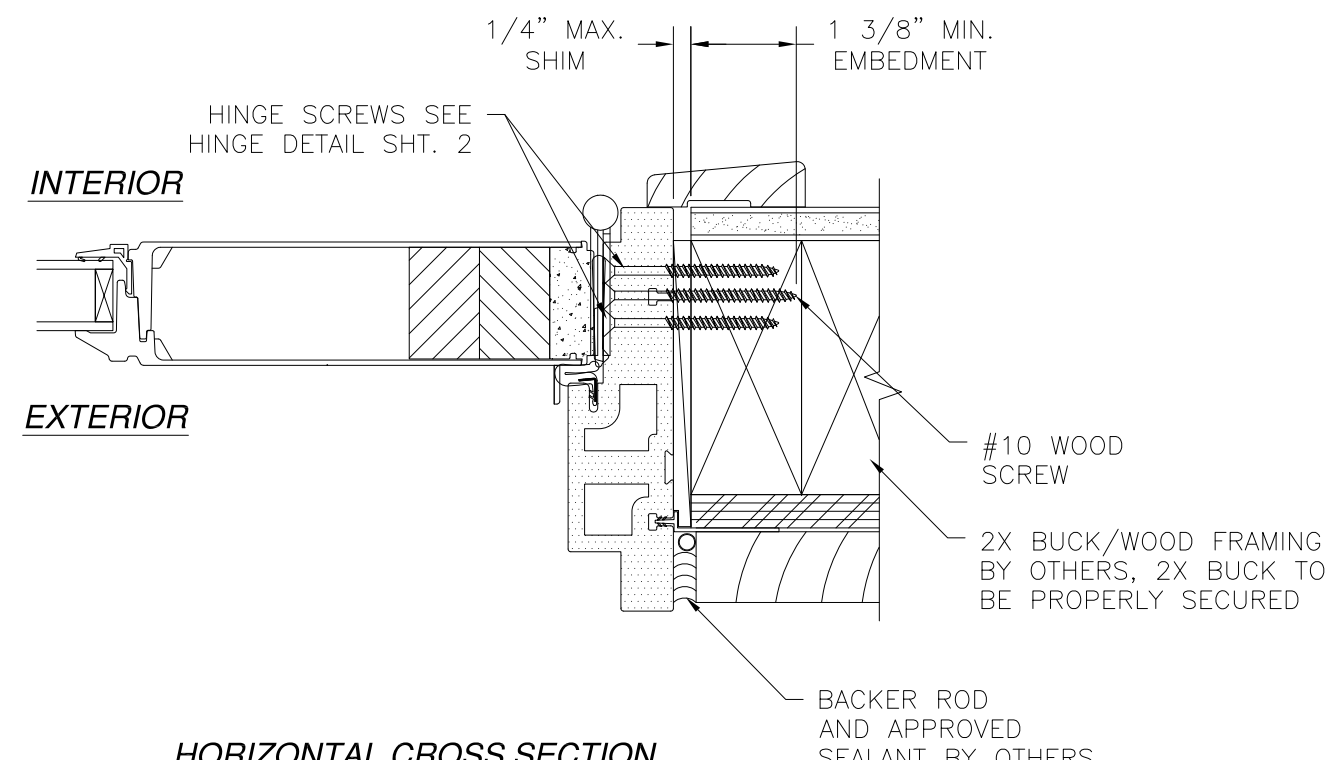


Luis R. Lomas P.E.  
 TX No.: 101889

REVISIONS			
REV	DESCRIPTION	DATE	APPROVED
A	UPDATED HARDWARE	10/17/18	R.L.
B	REVISED PER NEW REQUIREMENTS	12/10/19	R.L.

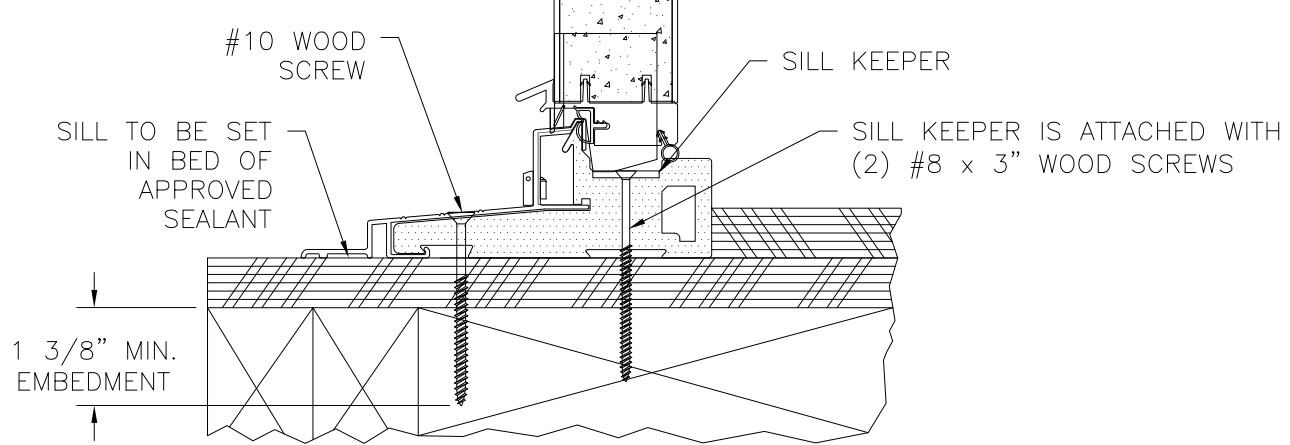


**EXTERIOR**                      **INTERIOR**



**INTERIOR**  
**EXTERIOR**

**HORIZONTAL CROSS SECTION  
HINGE JAMB DETAIL  
2X BUCK/WOOD FRAMING INSTALLATION**



**VERTICAL CROSS SECTION  
DOOR SHOWN, SIDELITE SIMILAR  
2X BUCK/WOOD FRAMING INSTALLATION**

- NOTES:**  
 1. INTERIOR AND EXTERIOR FINISHES, BY OTHERS, NOT SHOWN FOR CLARITY.  
 2. PERIMETER AND JOINT SEALANT BY OTHERS TO BE DESIGNED IN ACCORDANCE WITH ASTM E2112

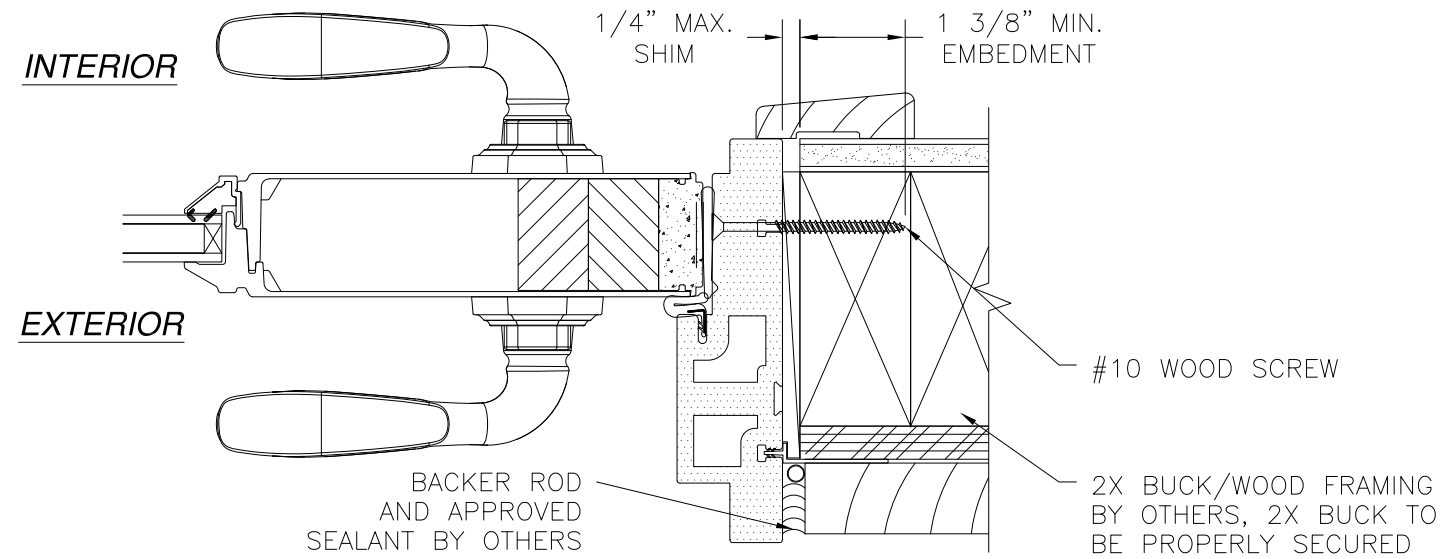
**SIGNED: 01/15/2020**

<b>NAN YA PLASTICS CORP. USA</b> 8989 NORTH LOOP EAST HOUSTON, TX 77029		
IN-SWING ENTRANCE DOOR W/ & W/O SIDELITES INSTALLATION DETAILS		
DRAWN: L.M.P.	DWG NO. 08-01537	REV B
SCALE NTS	DATE 04/16/12	SHEET 6 OF 9
L. ROBERTO LOMAS P.E. 1432 WOODFORD RD LEWISVILLE, NC 27023 434-688-0609 rllomas@rlomaspe.com		

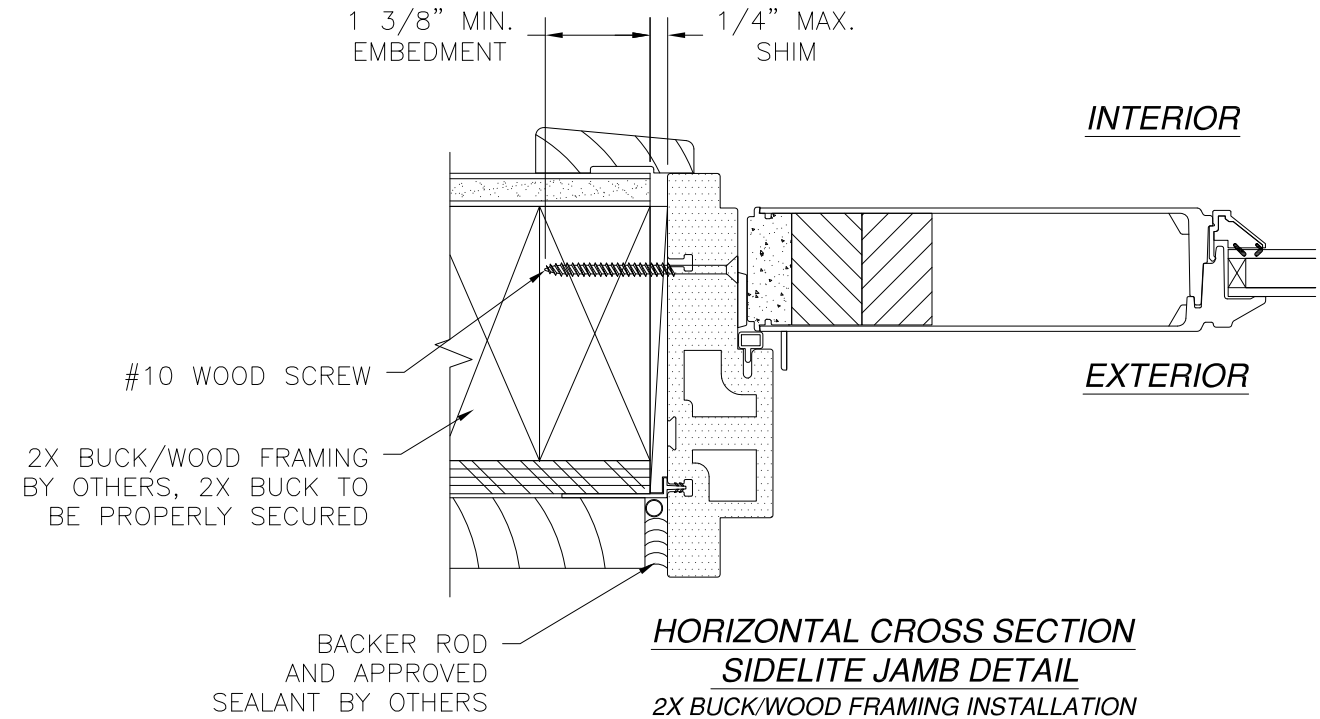


Luis R. Lomas P.E.  
TX No.: 101889

REVISIONS			
REV	DESCRIPTION	DATE	APPROVED
A	UPDATED HARDWARE	10/17/18	R.L.
B	REVISED PER NEW REQUIREMENTS	12/10/19	R.L.



**HORIZONTAL CROSS SECTION  
STRIKE JAMB DETAIL**  
2X BUCK/WOOD FRAMING INSTALLATION



**HORIZONTAL CROSS SECTION  
SIDELITE JAMB DETAIL**  
2X BUCK/WOOD FRAMING INSTALLATION

NOTES:  
 1. INTERIOR AND EXTERIOR FINISHES, BY OTHERS, NOT SHOWN FOR CLARITY.  
 2. PERIMETER AND JOINT SEALANT BY OTHERS TO BE DESIGNED IN ACCORDANCE WITH ASTM E2112

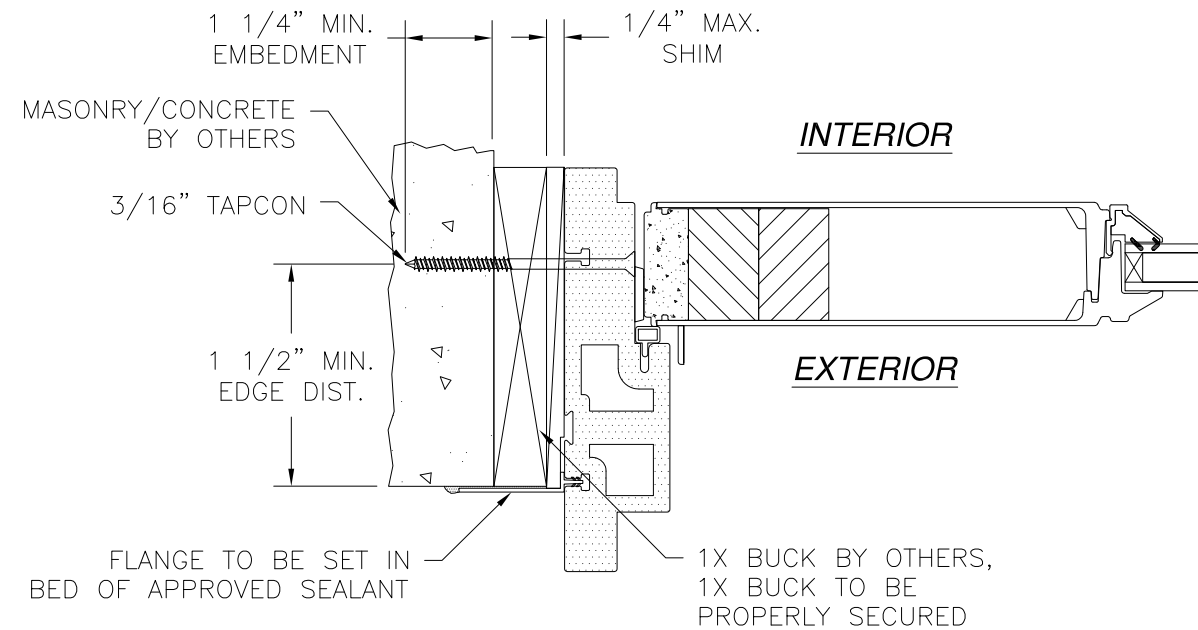
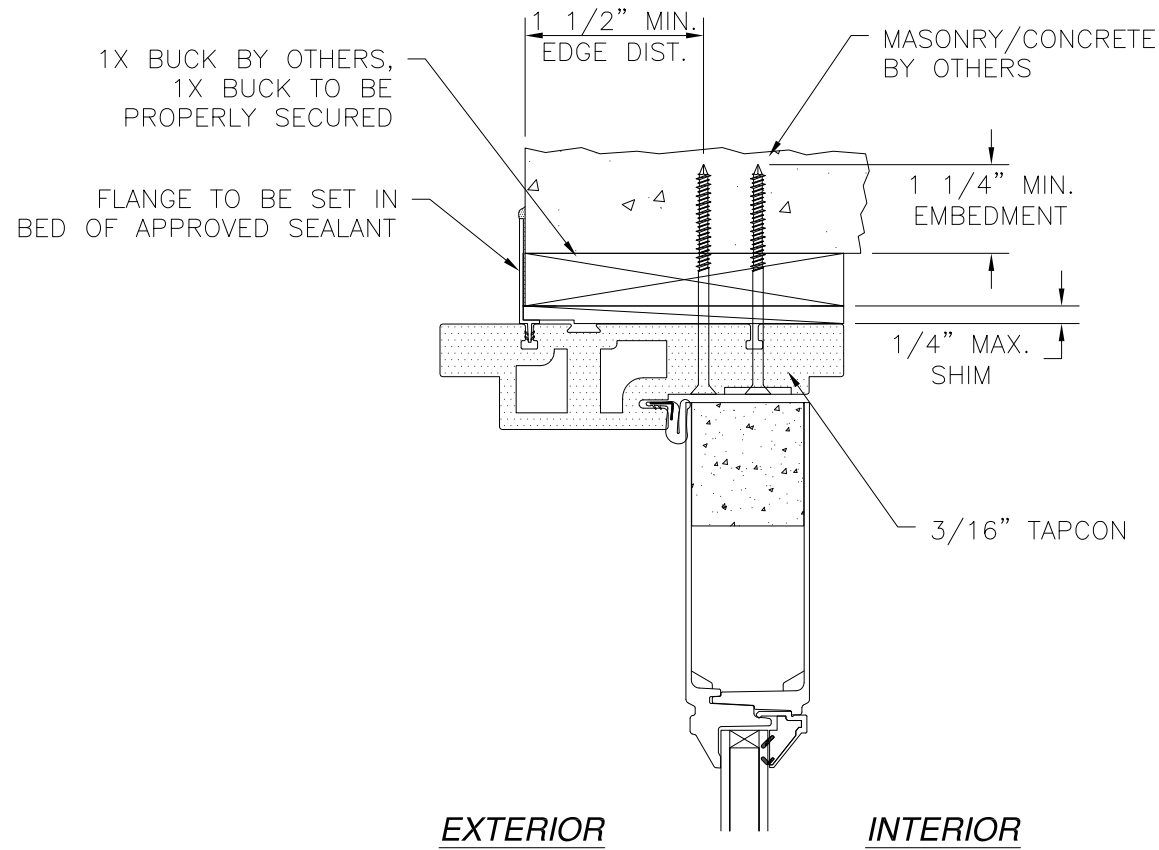
SIGNED: 01/15/2020

NAN YA PLASTICS CORP. USA 8989 NORTH LOOP EAST HOUSTON, TX 77029		
IN-SWING ENTRANCE DOOR W/ & W/O SIDELITES INSTALLATION DETAILS		
DRAWN: L.M.P.	DWG NO. 08-01537	REV B
SCALE NTS	DATE 04/16/12	SHEET 7 OF 9
L. ROBERTO LOMAS P.E. 1432 WOODFORD RD LEWISVILLE, NC 27023 434-688-0609 rllomas@rlomaspe.com		



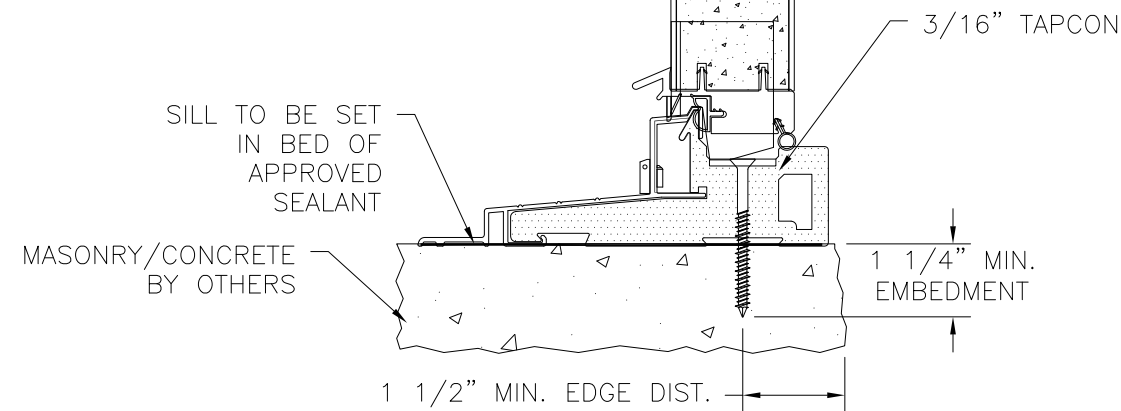
Luis R. Lomas P.E.  
 TX No.: 101889

REVISIONS			
REV	DESCRIPTION	DATE	APPROVED
A	UPDATED HARDWARE	10/17/18	R.L.
B	REVISED PER NEW REQUIREMENTS	12/10/19	R.L.



**MASONRY/CONCRETE INSTALLATION**  
DOOR JAMB SHOWN, SIDELITE JAMB SIMILAR

- NOTES:**
1. INTERIOR AND EXTERIOR FINISHES, BY OTHERS, NOT SHOWN FOR CLARITY.
  2. PERIMETER AND JOINT SEALANT BY OTHERS TO BE DESIGNED IN ACCORDANCE WITH ASTM E2112



**MASONRY/CONCRETE INSTALLATION**  
DOOR SHOWN SIDELITE SIMILAR

SIGNED: 01/15/2020

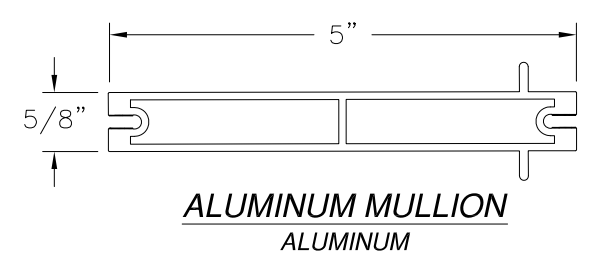
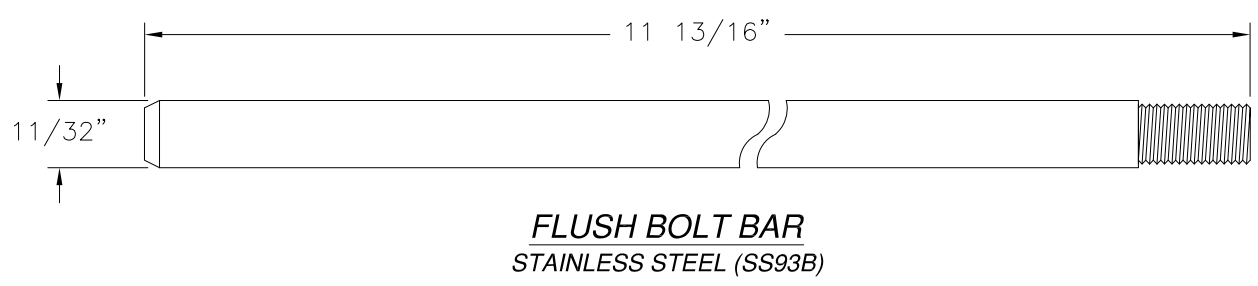
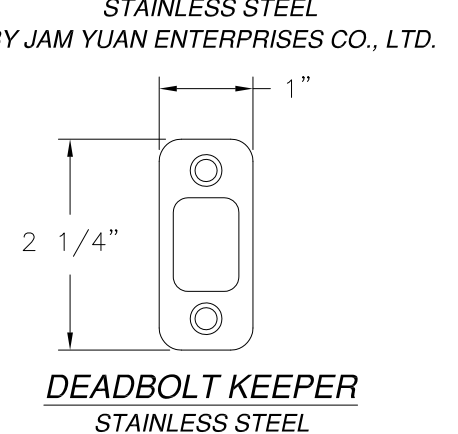
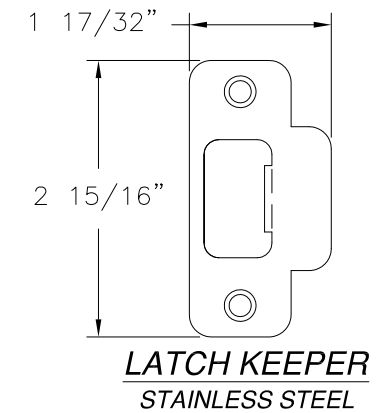
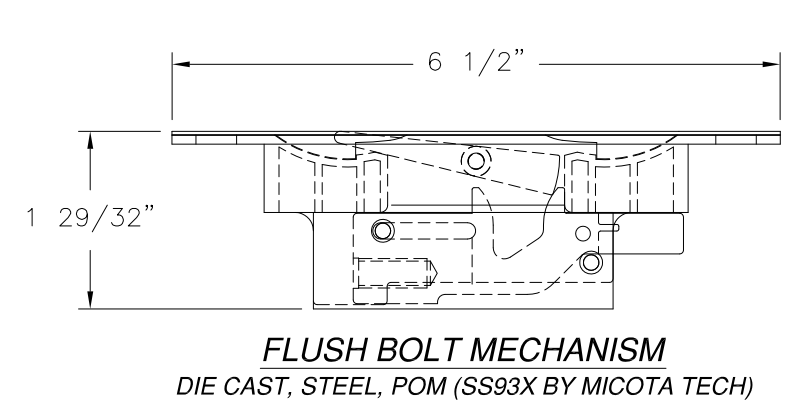
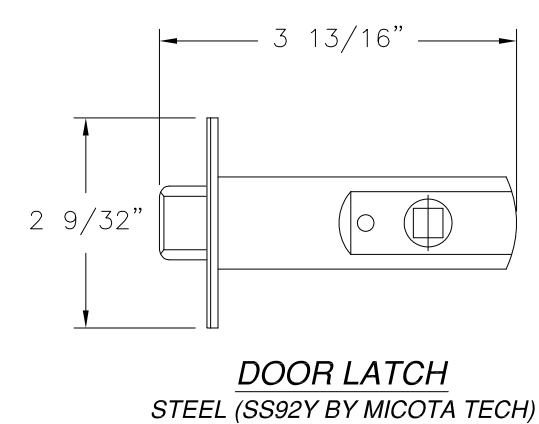
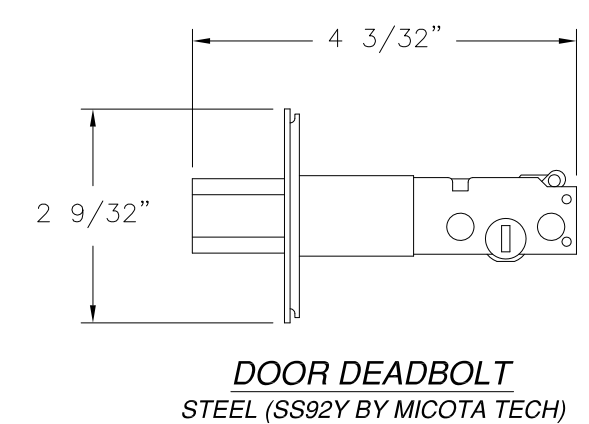
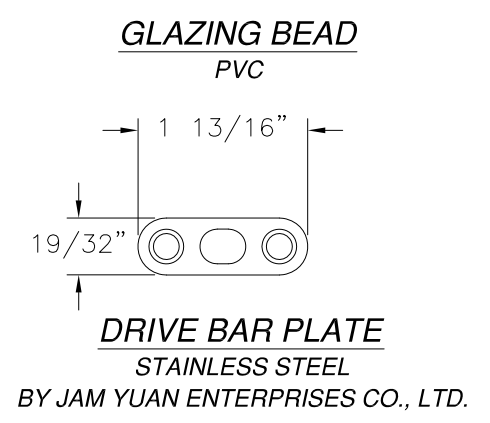
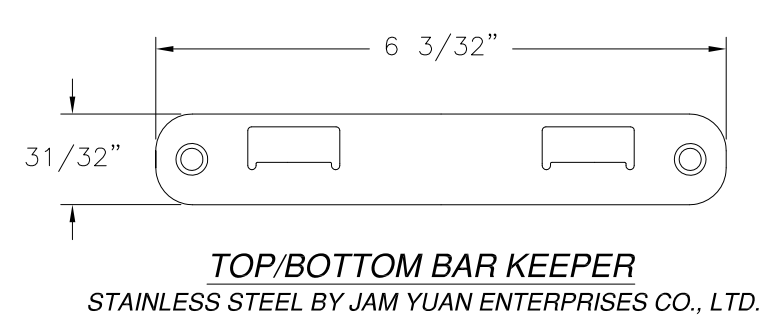
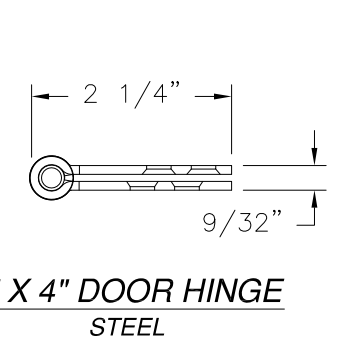
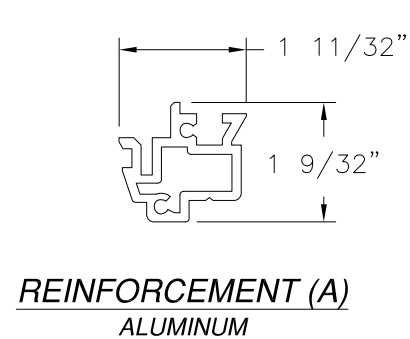
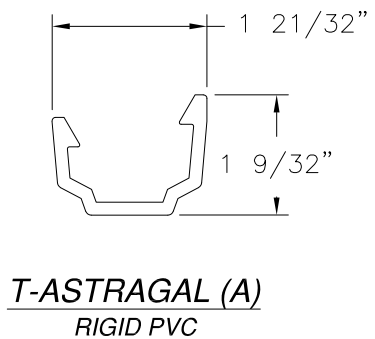
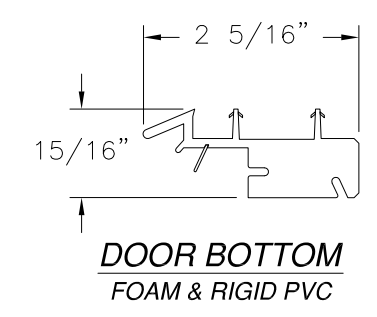
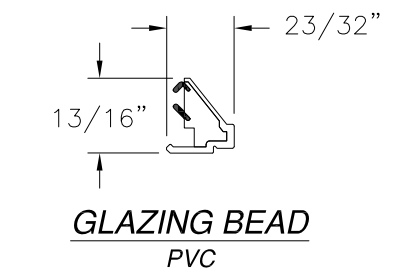
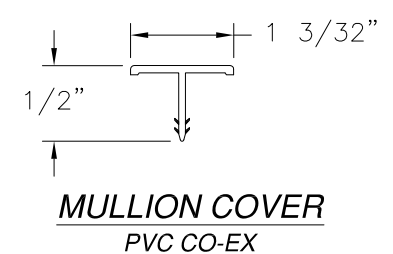
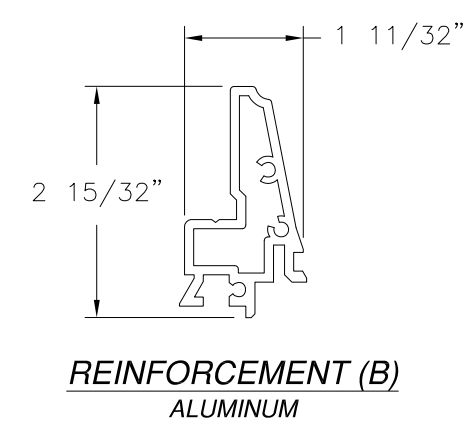
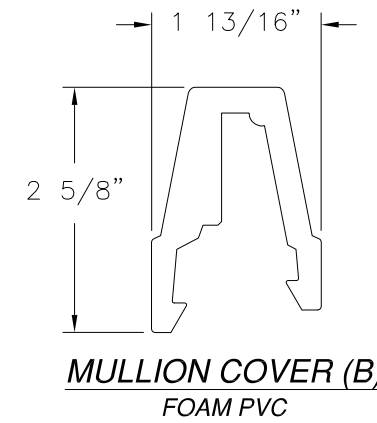
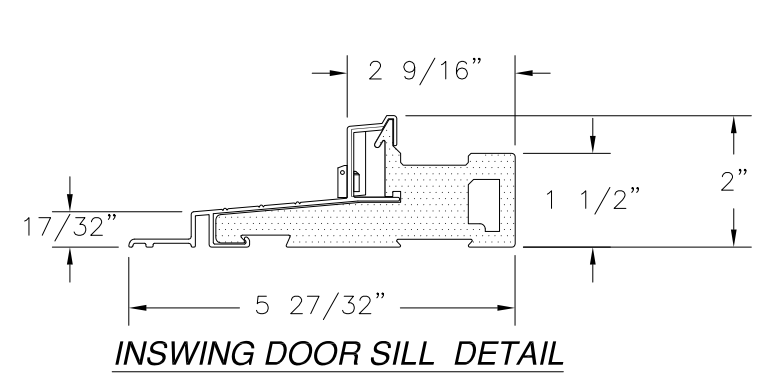
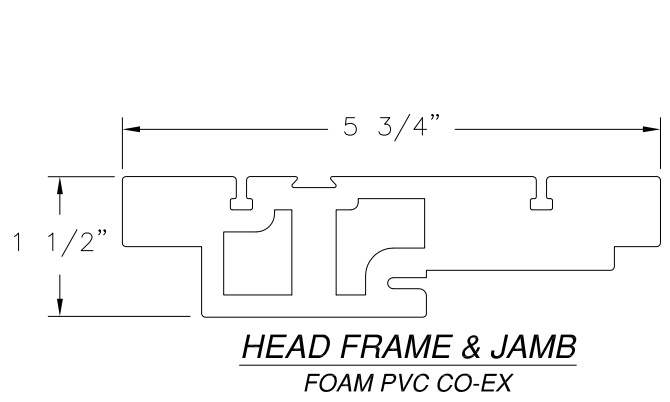
<p>NAN YA PLASTICS CORP. USA 8989 NORTH LOOP EAST HOUSTON, TX 77029</p>		
<p>IN-SWING ENTRANCE DOOR W/ &amp; W/O SIDELITES INSTALLATION DETAILS</p>		
<p>DRAWN: L.M.P.</p>	<p>DWG NO. 08-01537</p>	<p>REV B</p>
<p>SCALE NTS</p>	<p>DATE 04/16/12</p>	<p>SHEET 8 OF 9</p>
<p>L. ROBERTO LOMAS P.E. 1432 WOODFORD RD LEWISVILLE, NC 27023 434-688-0609 rllomas@rlomaspe.com</p>		



Luis R. Lomas P.E.  
TX No.: 101889



REVISIONS			
REV	DESCRIPTION	DATE	APPROVED
A	UPDATED HARDWARE	10/17/18	R.L.
B	REVISED PER NEW REQUIREMENTS	12/10/19	R.L.



NAN YA PLASTICS CORP. USA  
8989 NORTH LOOP EAST  
HOUSTON, TX 77029

IN-SWING ENTRANCE DOOR  
W/ & W/O SIDELITES  
COMPONENTS

DRAWN: L.M.P.	DWG NO. 08-01537	REV B
SCALE NTS	DATE 04/16/12	SHEET 9 OF 9

L. ROBERTO LOMAS P.E.  
1432 WOODFORD RD LEWISVILLE, NC 27023  
434-688-0609 rllomas@rlomaspe.com



Luis R. Lomas P.E.  
TX No.: 101889

SIGNED: 01/15/2020