

SIMPSON DOOR COMPANY

GLAZED & OPAQUE I.S. EXTERIOR WOOD DOORS WITH SIDELIGHTS

INSTALLATION ANCHORAGE DETAILS

PROJECT: #419-1112

SIMPSON DOOR COMPANY
 400 W. SIMPSON AVENUE
 McCLEARY, WASHINGTON 98557
 TITLE: GLAZED & OPAQUE WOOD DOORS WITH SIDELIGHTS
 GENERAL AND INSTALLATION NOTES
 DRAWN BY: TJH
 DATE: 05/31/12
 SCALE: N.T.S.
 DRAWING NO: SIMP2062
 SHEET: 1 OF 9
 PREPARED BY:

PTC PRODUCT DESIGN GROUP, LLC
 PO BOX 520775
 LONGWOOD, FLORIDA 32752
 A CERTIFICATE OF
 REGISTRATION: F-37470
 Phone: 321.690.1788
 Fax: 321.690.1789
 Email: info@ptc-corp.com

Robert J. Amoroso
 TX P.E. No. 80817

REV	DESCRIPTION	DATE	BY
A	UPDATE FOR RE-EVALUATION	10/26/21	RJA

REV	DESCRIPTION	DATE	BY
A	UPDATE FOR RE-EVALUATION	10/26/21	RJA

DRAWN BY: TJH
 DATE: 05/31/12
 SCALE: N.T.S.
 DRAWING NO: SIMP2062
 SHEET: 1 OF 9

GENERAL NOTES:

1. THE PRODUCT SHOWN HEREIN IS DESIGNED TO COMPLY WITH THE 2018 INTERNATIONAL BUILDING CODE AND 2018 INTERNATIONAL RESIDENTIAL CODE AT THE DESIGN PRESSURES STATED HEREIN.
2. THE PRODUCT DETAILS CONTAINED HEREIN ARE BASED UPON SIGNED AND SEALED TEST REPORT(S) NO. CCLI-10-162 AND ASSOCIATED LABORATORY DRAWINGS.
3. ADEQUACY OF THE EXISTING STRUCTURAL CONCRETE / MASONRY AND 2X FRAMING AS A MAIN WIND FORCE RESISTING SYSTEM CAPABLE OF WITHSTANDING AND TRANSFERRING APPLIED PRODUCT LOADS TO THE STRUCTURE IS THE RESPONSIBILITY OF THE ARCHITECT OR ENGINEER OF RECORD.
4. 1X AND 2X BUCKS (WHEN USED) SHALL BE DESIGNED AND ANCHORED TO PROPERLY TRANSFER ALL LOADS TO THE STRUCTURE. BUCK DESIGN AND INSTALLATION IS THE RESPONSIBILITY OF THE ARCHITECT OR ENGINEER OF RECORD.
5. THE INSTALLATION DETAILS DESCRIBED HEREIN ARE GENERIC AND MAY NOT REFLECT ACTUAL CONDITIONS FOR A SPECIFIC SITE. IF SITE CONDITIONS CAUSE INSTALLATION TO DEVIATE FROM THE REQUIREMENTS DETAILED HEREIN, SITE SPECIFIC DOCUMENTS SHALL BE PREPARED FOR USE WITH THIS DOCUMENT.
6. THESE DOOR ASSEMBLIES DO NOT SATISFY THE TEXAS DEPARTMENT OF INSURANCE'S CRITERIA FOR PROTECTION FROM WINDBORNE DEBRIS. THESE DOOR ASSEMBLIES WILL NEED TO BE PROTECTED WITH AN IMPACT PROTECTIVE SYSTEM WHEN INSTALLED IN AREAS WHERE WINDBORNE DEBRIS PROTECTION IS REQUIRED.
7. MATERIALS AND COMPONENTS:
 - 7.1. DOOR FRAME:
 - 7.1.1. HEAD AND JAMBS: PINE
 - 7.1.2. SILL: OAK OR MAHOGANY
 - 7.2. PANEL CORE MATERIAL: WESTERN HEMLOCK OR DOUGLAS FIR
 - 7.3. PANEL FACE VENEER: VARIABLE
 - 7.4. HINGES: 4 X 4 BUTT
 - 7.5. LATCH & DEADBOLT: KWIKSET SERIES 740 LOCKSET W/KWIKSET SERIES 980 DEADBOLT.
 - 7.6. LATCH & DEADBOLT: SCHLAGE F SERIES HANDLE SET W/SCHLAGE B60 DEADBOLT.
 - 7.7. MULTIT-POINT LOCKING HARDWARE: W & F MULTI-POINT TRIENNIIUM 3000 SERIES.
 - 7.8. MULTIT-POINT LOCKING HARDWARE: HOPPE N.A. MULTI-POINT LOCK-SET HLS9000
 - 7.9. MULL POST: ENDURA FAT BOY WOOD MULL.
 - 7.10. THRESHOLD: ENDURA PRODUCTS ALUMINUM INSWING ADJUSTABLE #ZAI5625.
 - 7.11. THRESHOLD: YOUNG MFG. ALUMINUM/OAK INSWING.
 - 7.12. THRESHOLD: ALUMINUM INSWING ADA SILL

8. APPROVED CORNER CONSTRUCTION

- 8.1. WOOD DOWEL SERIES
- 8.2. MORTISE AND TENON SERIES

9. GLASS MEETS THE REQUIREMENTS OF ASTM E1300-04e1
GLASS CHARTS. SEE SHEET 6 FOR GLAZING DETAILS. QUALIFIED GLAZING INCLUDES:

- 9.1. 1/8" TEMPERED GLASS
- 9.2. 3/4" O.V. INSULATING GLASS CONSISTING OF 1/8" TEMPERED GLASS x 1/2" AIR SPACE x 1/8" TEMPERED GLASS

10. DESIGNATIONS "X" AND "O" STAND FOR THE FOLLOWING (AS APPLICABLE):

- 10.1. X: OPERABLE PANEL
- 10.2. O: FIXED PANEL

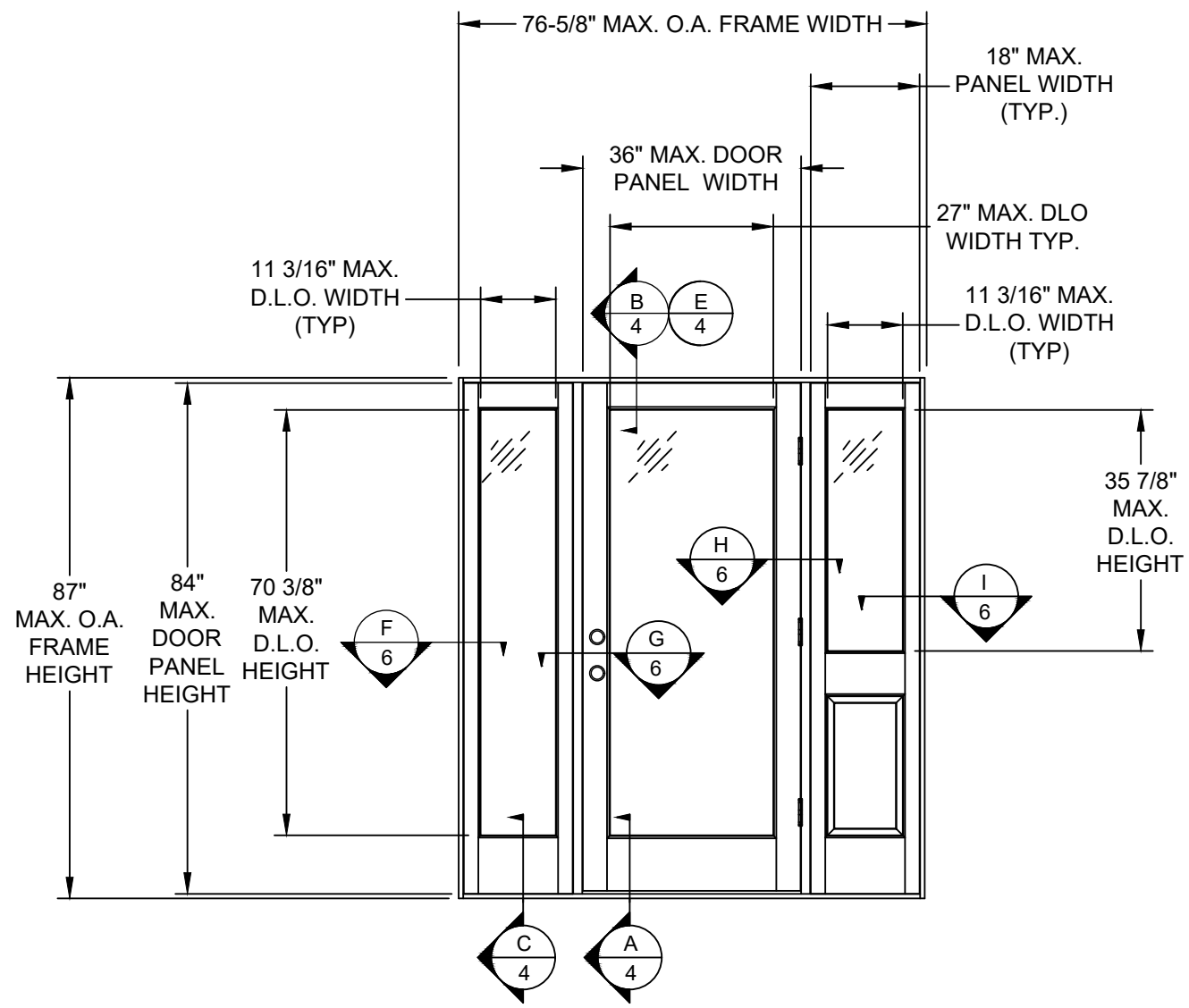
INSTALLATION NOTES:

1. ONE (1) INSTALLATION ANCHOR IS REQUIRED AT EACH ANCHOR LOCATION SHOWN.
2. THE NUMBER OF INSTALLATION ANCHORS DEPICTED IS THE MINIMUM NUMBER OF ANCHORS TO BE USED FOR PRODUCT INSTALLATION. IN ADDITION TO THE INSTALLATION ANCHORS SHOWN, TWO (2) INSTALLATION ANCHORS ARE REQUIRED IN EACH HINGE. LOCATE HINGE ANCHORS IN THE TOP HOLE OF EACH HINGE LEAF INTO THE HINGE JAMB. ANCHORS ARE TO MATCH TYPE AND EMBEDMENT OF THOSE SHOWN HEREIN FOR RESPECTIVE SUBSTRATE.
3. SHIM AS REQUIRED AT EACH INSTALLATION ANCHOR WITH LOAD BEARING SHIM(S). MAXIMUM ALLOWABLE SHIM SIZE IS 1/4 INCH. SHIM WHERE SPACE OF 1/16 INCH OR GREATER OCCURS. SHIM(S) SHALL BE CONSTRUCTED OF HIGH DENSITY PLASTIC OR BETTER.
4. FOR INSTALLATION INTO WOOD FRAMING, USE #10 WOOD SCREWS OF SUFFICIENT LENGTH TO ACHIEVE 1 1/2 INCH MINIMUM EMBEDMENT.
5. FOR INSTALLATION THROUGH 1X BUCK TO CONCRETE / MASONRY, OR DIRECTLY INTO CONCRETE / MASONRY, USE 3/16 INCH ITW ADVANCED THREADFORM TECHNOLOGY TAPCONS OR EQUAL OF SUFFICIENT LENGTH TO ACHIEVE 1 INCH MINIMUM EMBEDMENT FOR CMU BLOCK AND 1 1/2 INCH MINIMUM EMBEDMENT FOR CONCRETE.
6. MINIMUM EMBEDMENT AND EDGE DISTANCE EXCLUDE WALL FINISHES (INCLUDING BUT NOT LIMITED TO STUCCO, FOAM, BRICK VENEER AND SIDING).
7. FOR CONCRETE BLOCK, DO NOT INSTALL INSTALLATION ANCHORS INTO MORTAR JOINTS. EDGE DISTANCE IS MEASURED FROM FREE EDGE OF BLOCK OR EDGE OF MORTAR JOINT INTO FACE SHELL OF BLOCK.
8. INSTALLATION ANCHOR CAPACITIES FOR PRODUCTS HEREIN ARE BASED ON SUBSTRATE MATERIALS WITH THE FOLLOWING PROPERTIES:
 - A. WOOD - MINIMUM SPECIFIC GRAVITY OF 0.42.
 - B. CONCRETE - MINIMUM COMPRESSIVE STRENGTH OF 2000 PSI.
 - C. MASONRY - STRENGTH CONFORMANCE TO ASTM C-90.

TABLE OF CONTENTS	
SHEET	SHEET DESCRIPTION
1	GENERAL NOTES,INSTALLATION NOTES & D.P. CHART
2	ELEVATION AND ANCHOR LAYOUT
3	ANCHOR LAYOUT
4	VERTICAL SECTIONS & GLAZING DETAIL
5	HORIZONTAL SECTIONS
6	HORIZONTAL SECTIONS AND GLAZING DETAILS
7	MULLION END ANCHORS AND WOOD PANEL DETAIL
8	BILL OF MATERIALS AND COMPONENTS
9	TYPICAL APPROVED PANEL CONFIGURATIONS

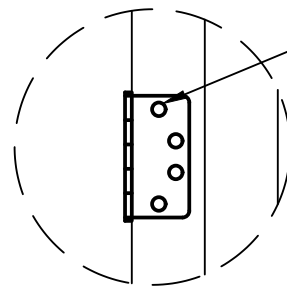
DESIGN PRESSURE RATING (PSF)		
MAX. SIZE OF DOORS	WHERE WATER INFILTRATION REQUIREMENT IS NOT NEEDED	
6'4-5/8" X 7'2-1/2"	STANDARD LOCKS	3-POINT HARDWARE
OXO, OX, XO	±50.0 PSF	±50.0 PSF

DESIGN PRESSURE RATING (PSF)		
MAX. SIZE OF DOORS	WHERE WATER INFILTRATION REQUIREMENT IS NOT NEEDED	
3'-2" X 7'2-1/2"	STANDARD LOCKS	3-POINT HARDWARE
X	±50.0 PSF	±50.0 PSF



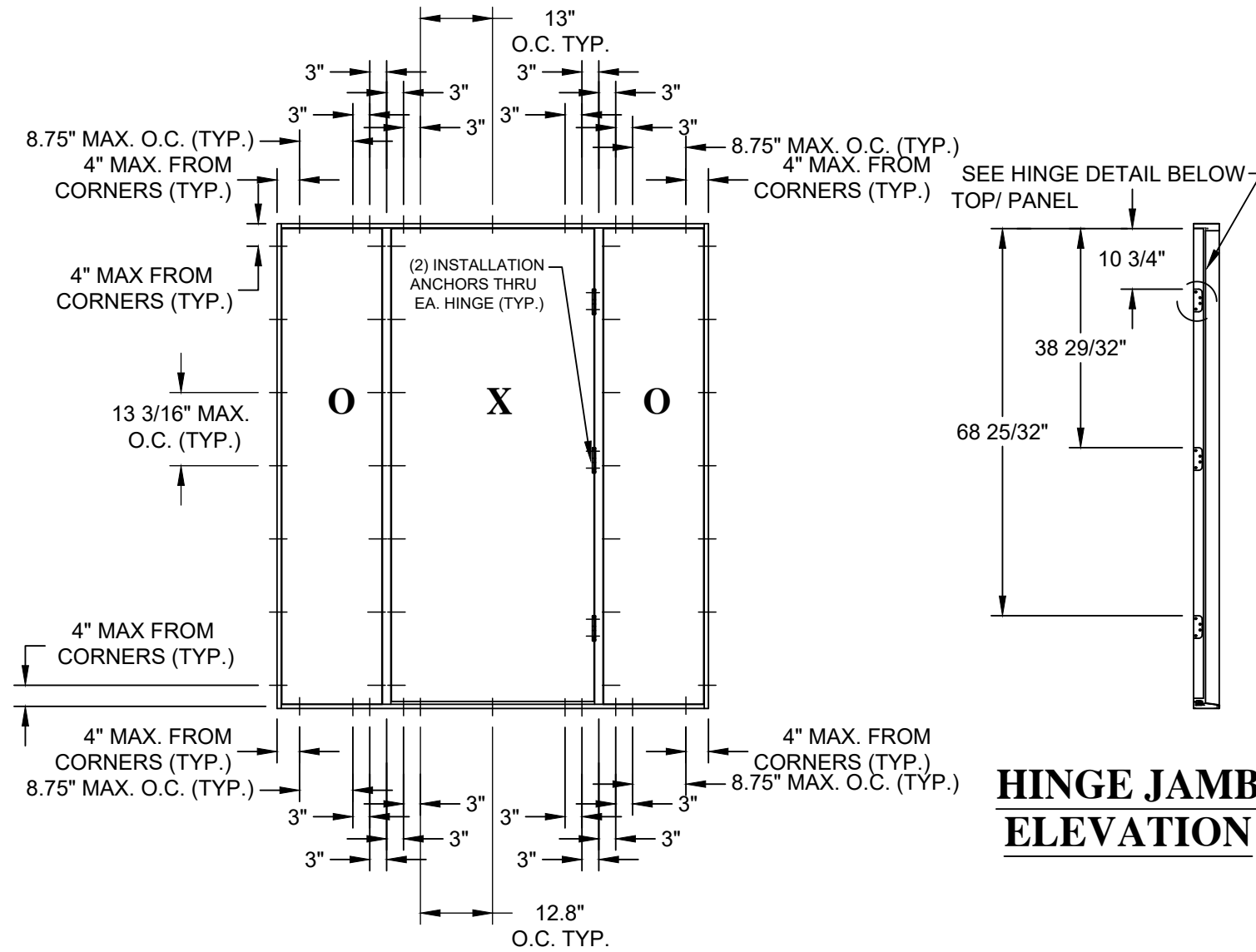
ELEVATION
 INTERIOR VIEW
 (SHOWN W/ OPTIONAL
 STANDARD HARDWARE)

MAXIMUM DLO FOR FULLY GLAZED DOOR PANEL IS 27" X 70-3/8" AS SHOWN ABOVE. MAXIMUM DLO FOR FULLY GLAZED SIDELITE PANEL IS 11-3/16" X 70-3/8" AS SHOWN ABOVE. DLO OF PARTIALLY GLAZED SIDELITE PANEL SHOWN ABOVE IS VARIABLE AND CANNOT EXCEED THAT OF FULLY GLAZED SIDELITE PANEL.



INSTALLATION ANCHOR
 (SEE INSTALLATION NOTE 2, SHEET 1)

HINGE DETAIL



ANCHOR LAYOUT
50.0 D.P.
 INTERIOR VIEW
 (SEE INSTALLATION NOTE 2)

SEE HINGE DETAIL BELOW
 TOP/ PANEL

**HINGE JAMB
 ELEVATION**

PROJECT: #419-1112

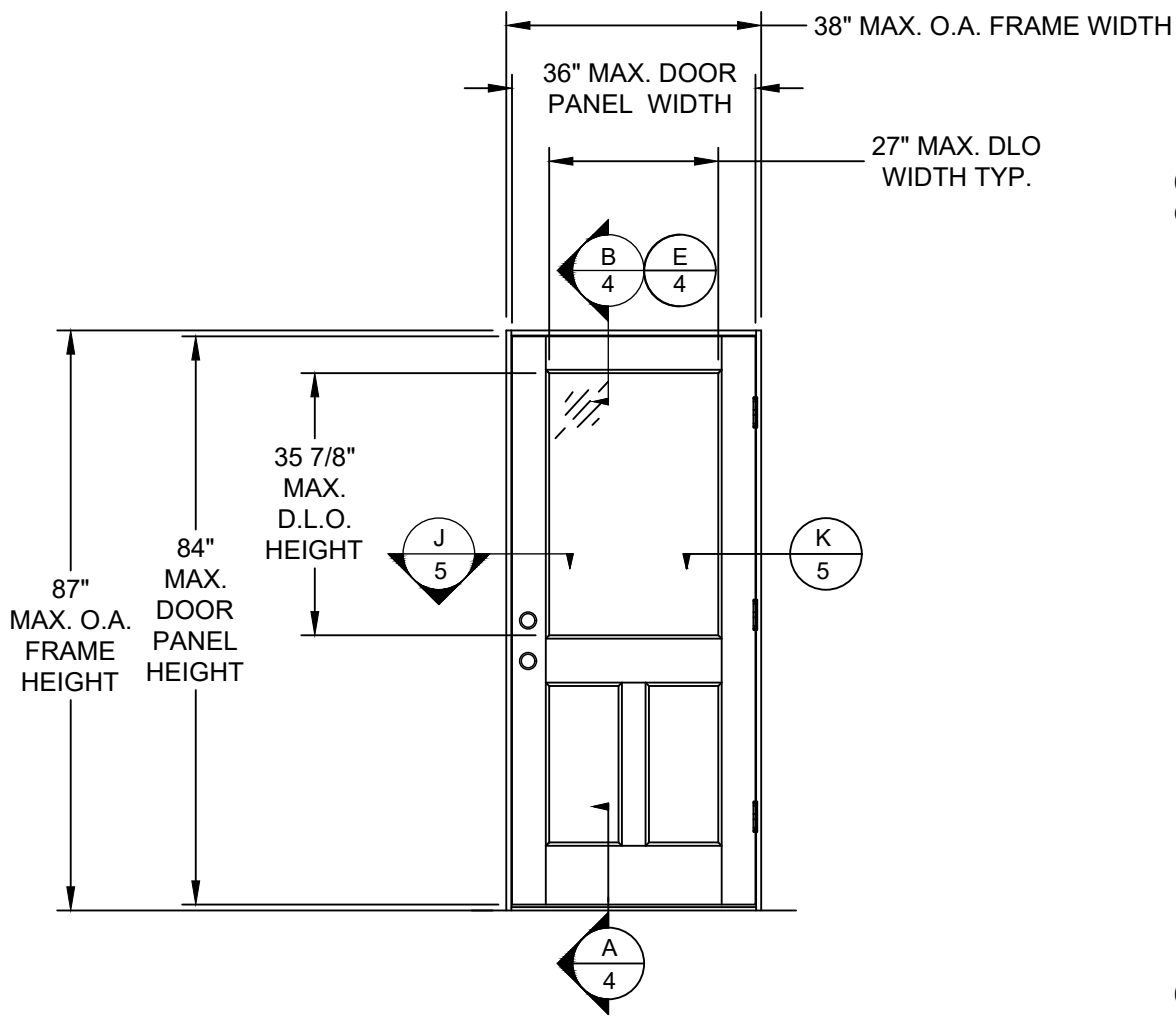
SIMPSON DOOR COMPANY
 400 W. SIMPSON AVENUE
 MCCLEARY, WASHINGTON 98557

TITLE: GLAZED. & OPAQUE WOOD DOORS WITH SIDELIGHTS
 ELEVATION & ANCHOR LAYOUT

DATE:	05/31/12
DRAWING NO.:	SIMP2062
DRAWN BY:	TJH
SCALE:	N.T.S.
REV:	A
SHEET:	2 OF 9

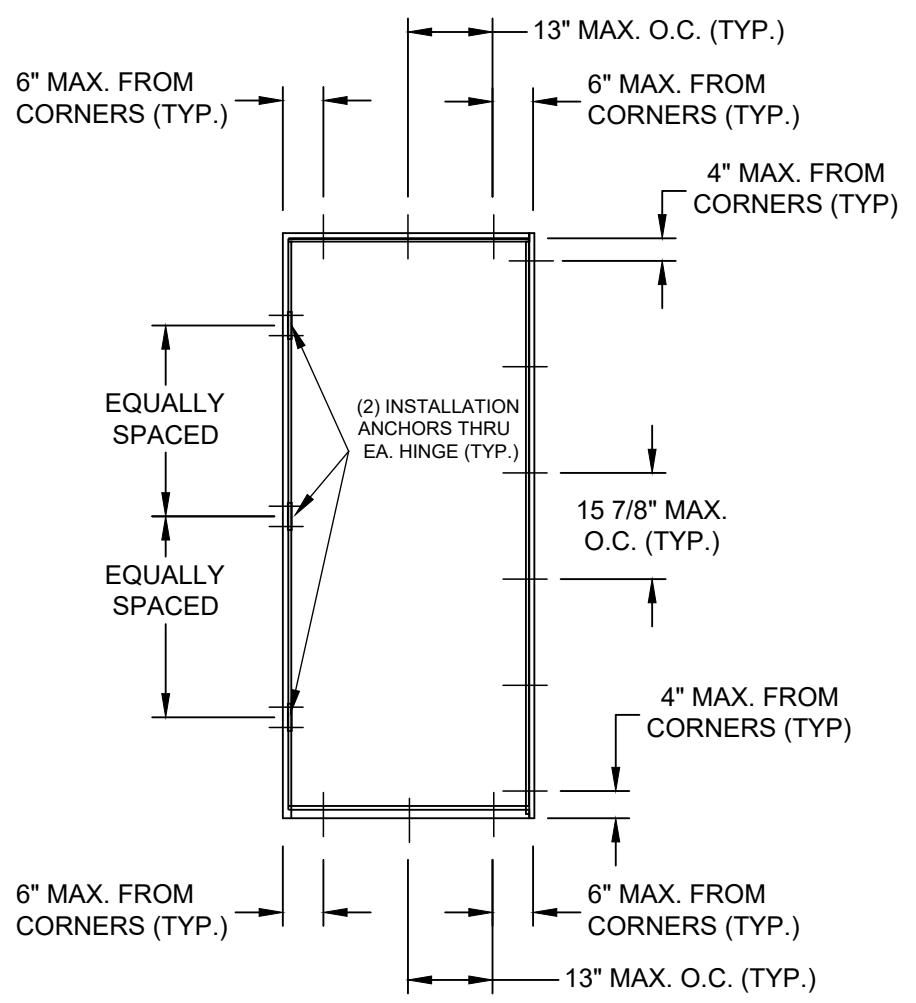
Robert J. Amoruso
 TX P.E. No. 80817

REV	DESCRIPTION	DATE	BY
A	UPDATE FOR RE-EVALUATION	10/26/21	RJA

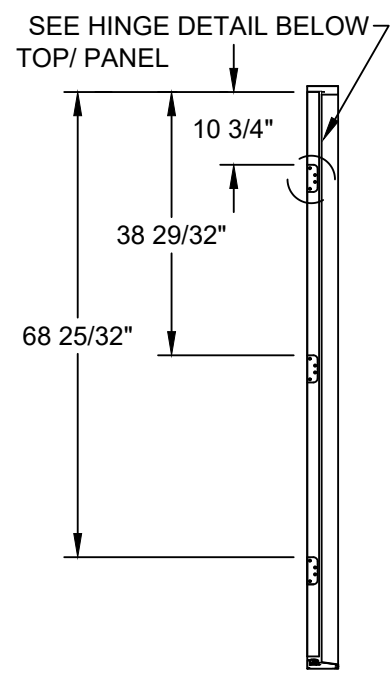


ELEVATION
 INTERIOR VIEW
 (SHOWN W/ OPTIONAL
 STANDARD HARDWARE)

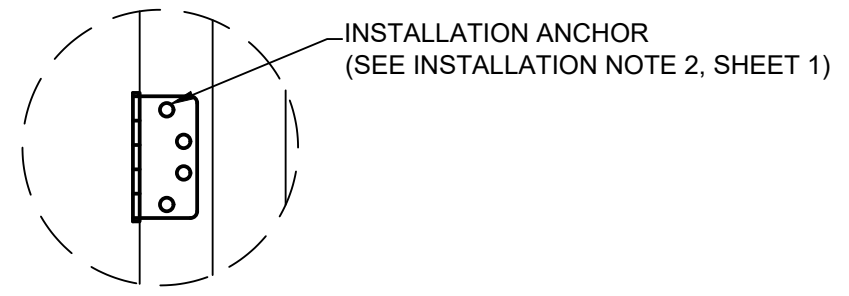
SHOWN ABOVE IS A PARTIALLY GLAZED PANEL AT 27" X 35-7/8". MAXIMUM DLO FOR FULLY GLAZED DOOR PANEL IS 27" X 70-3/8".



ANCHOR LAYOUT
50.0 PSF
 INTERIOR VIEW
 (SEE INSTALLATION NOTE 2)



**HINGE JAMB
 ELEVATION**



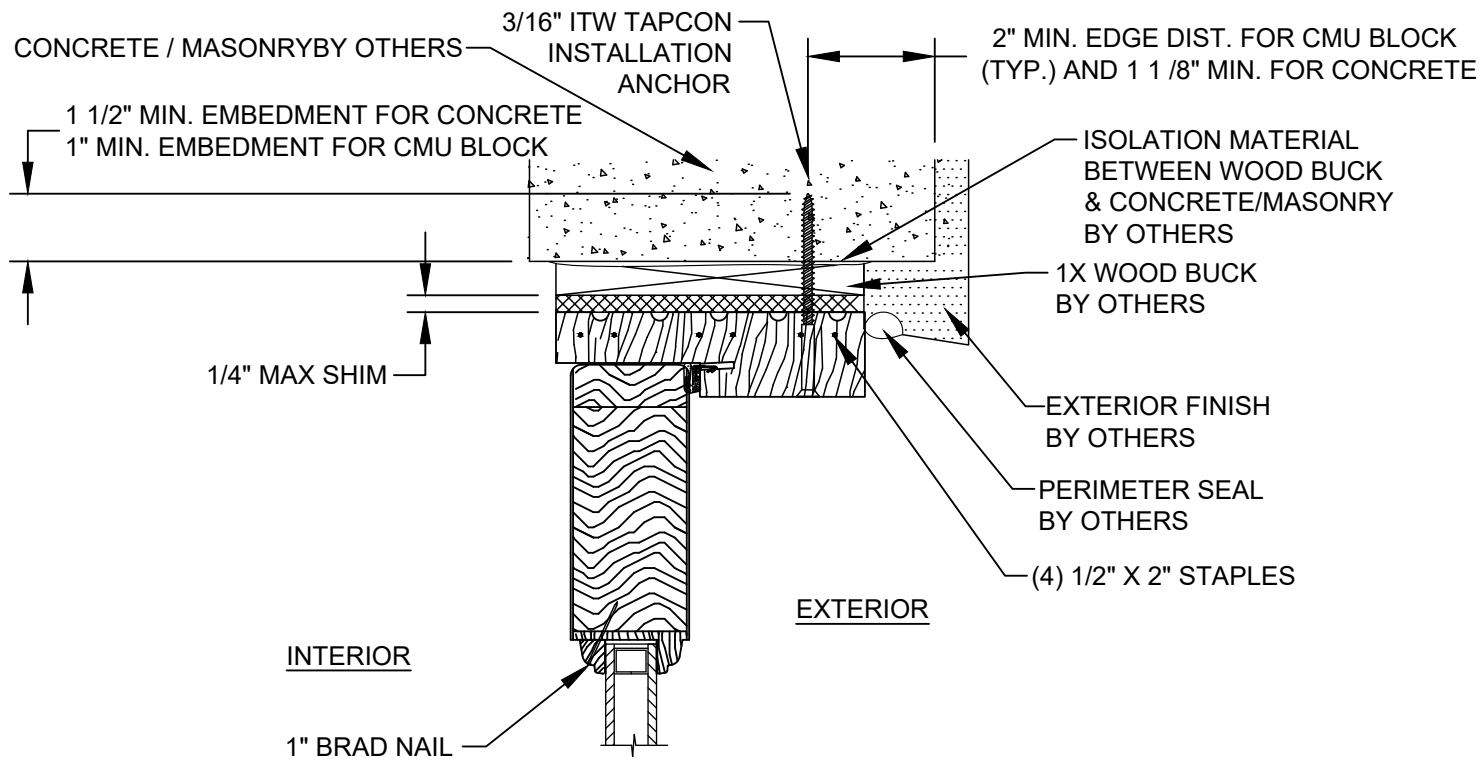
HINGE DETAIL

PROJECT: #419-1112

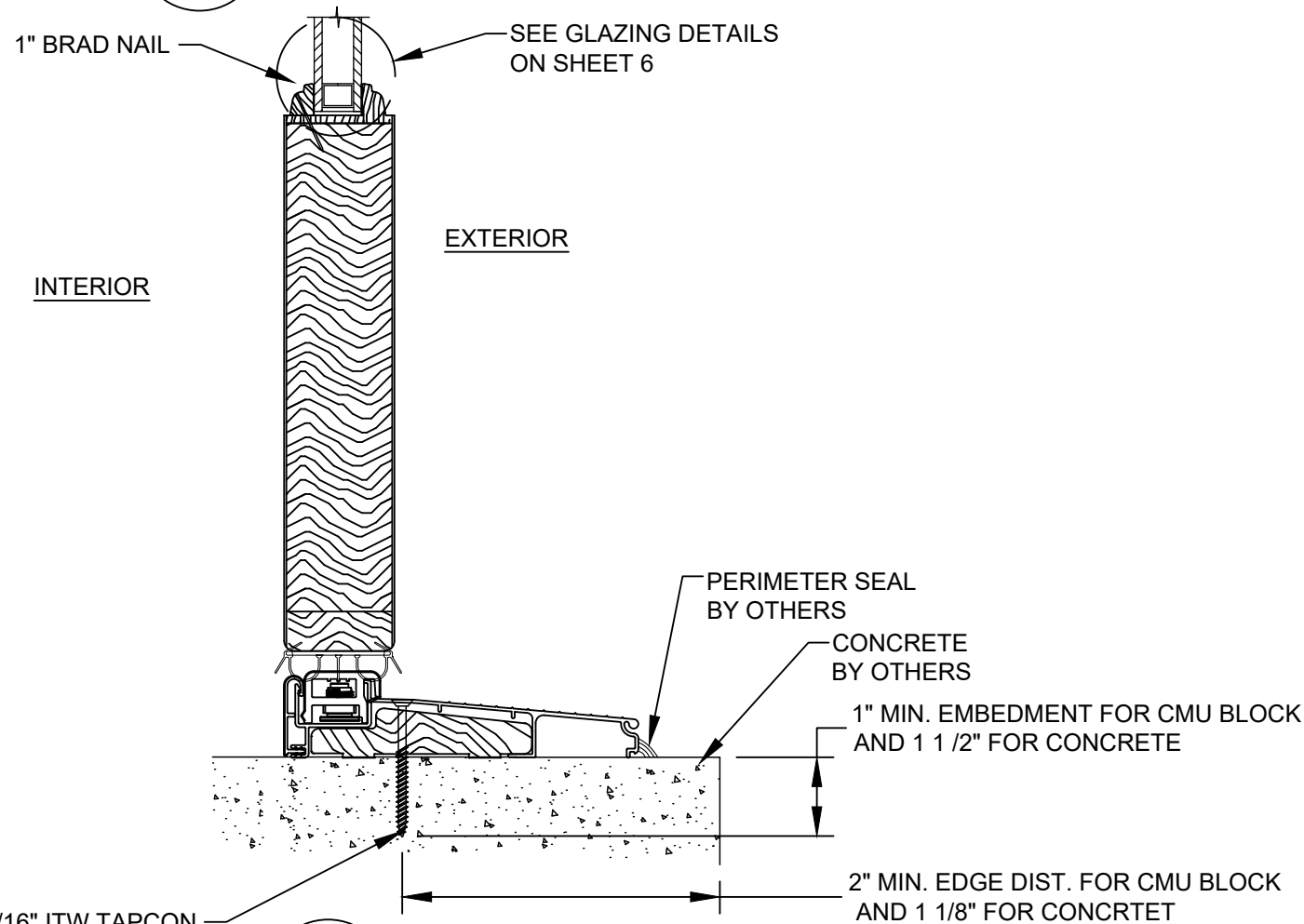
		10/26/21	RJA	BY
				DATE
A	UPDATE FOR RE-EVALUATION			DESCRIPTION
REV				

SIMPSON DOOR COMPANY		DATE:	05/31/12
400 W. SIMPSON AVENUE		DRAWING NO.:	SIMP2062
McCLEARY, WASHINGTON 98557		SCALE:	N.T.S.
TITLE: GLAZED. & OPAQUE WOOD DOORS WITH SIDELIGHTS		DRAWN BY:	TJH
ELEVATION & ANCHOR LAYOUT		REV:	A
PREPARED BY:		SHEET:	3 OF 9
PTC PRODUCT DESIGN GROUP, LLC		Phone: 321.690.1788 PO BOX 520775 LONGWOOD, FLORIDA 32752 TX CERTIFICATE OF REGISTRATION NO. F-18749 Email: info@ptc-corp.com	

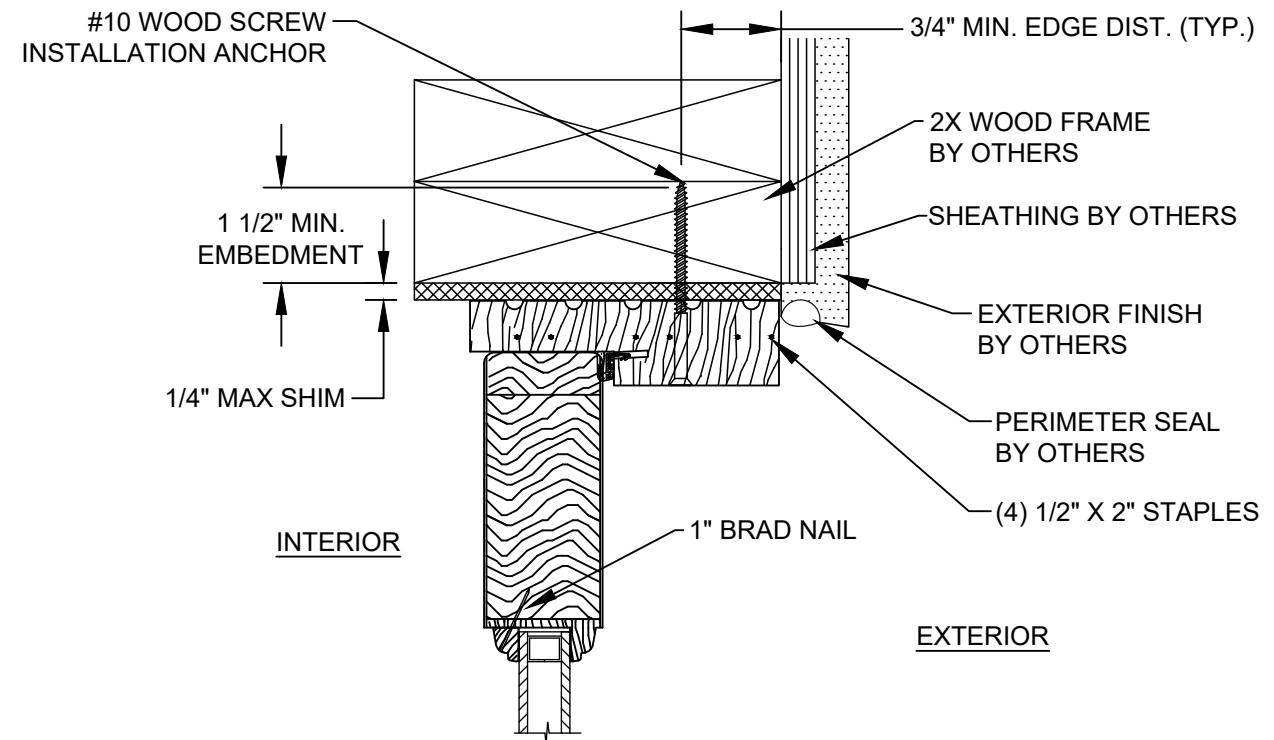
Robert J. Amoruso
 TX P.E. No. 80817



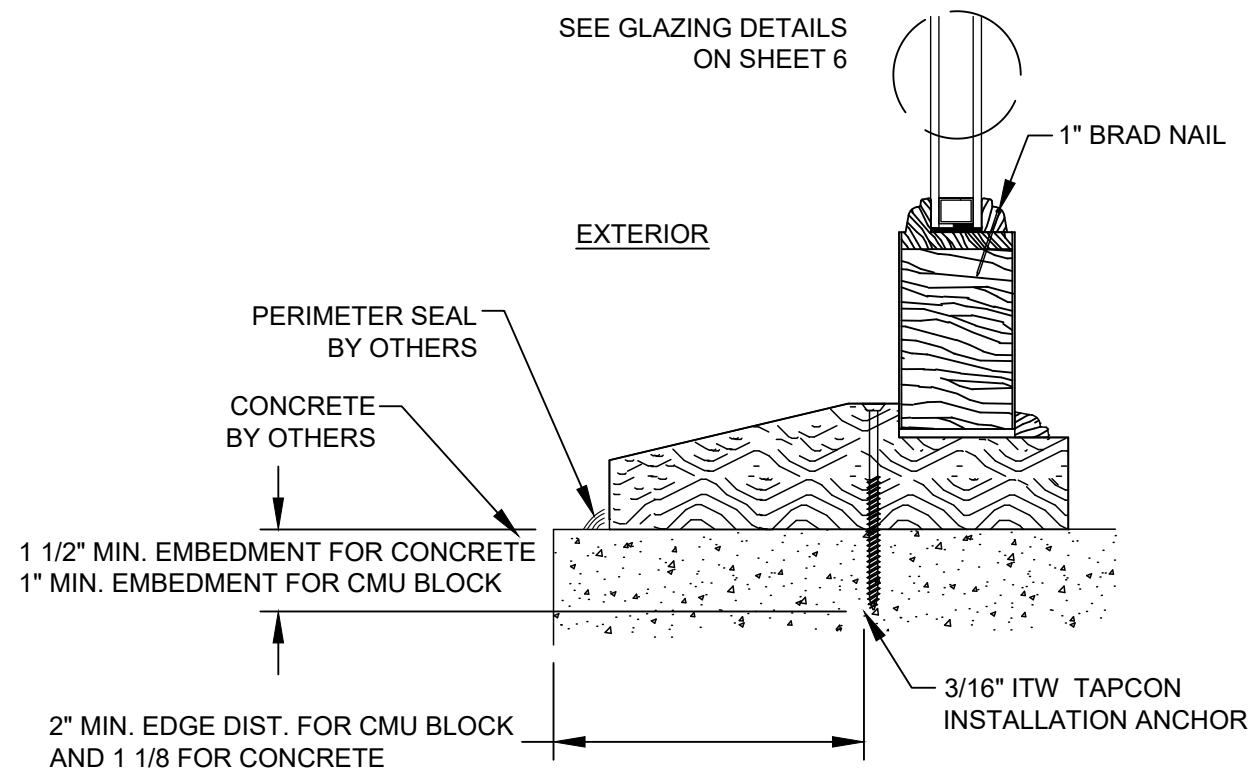
B VERTICAL SECTION
CONCRETE / MASONRY SUBSTRATE



A VERTICAL SECTION
CONCRETE SUBSTRATE



E VERTICAL SECTION
WOOD SUBSTRATE



C VERTICAL SECTION
SIDELIGHT
CONCRETE SUBSTRATE

PROJECT: #419-1112

SIMPSON DOOR COMPANY
400 W. SIMPSON AVENUE
MCCLEARY, WASHINGTON 98557

TITLE: GLAZED & OPAQUE WOOD DOORS WITH SIDELIGHTS
VERTICAL SECTIONS & GLAZING DETAIL

DRAWN BY: TJH DATE: 05/31/12

SCALE: N.T.S. DRAWING NO: SIMP2062

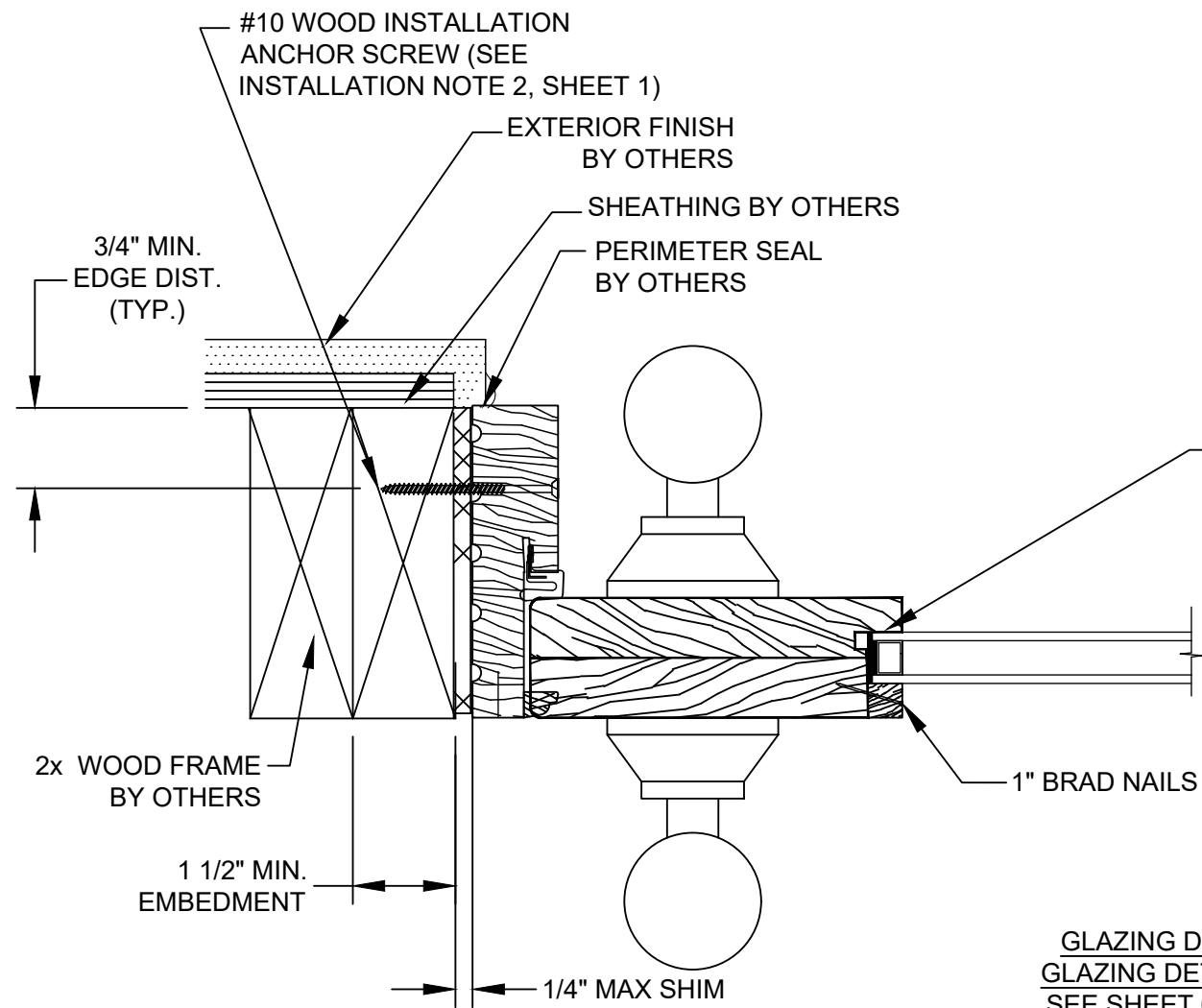
REV: A SHEET: 4 OF 9

DESCRIPTION: UPDATE FOR RE-EVALUATION

DATE: 10/26/21

BY: RJA

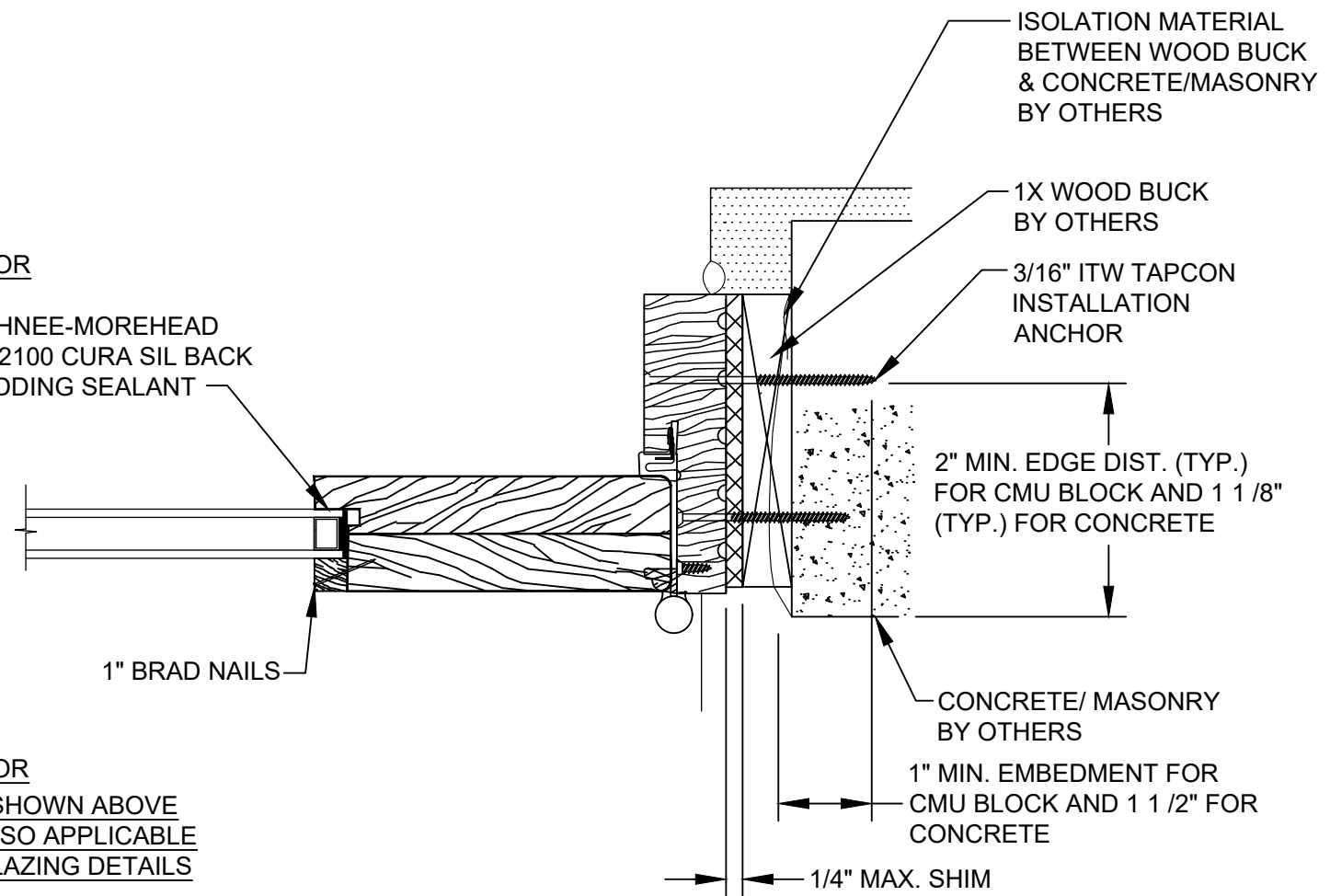
Robert J. Amoruso
TX P.E. No. 80817



EXTERIOR

INTERIOR

GLAZING DETAIL 2 SHOWN ABOVE
GLAZING DETAIL 1 ALSO APPLICABLE
SEE SHEET 6 FOR GLAZING DETAILS



J **HORIZONTAL SECTION**
WOOD SUBSTRATE
SINGLE DOOR

K **HORIZONTAL SECTION**
CONCRETE / MASONRY SUBSTRATE
SINGLE DOOR

PROJECT: #419-1112

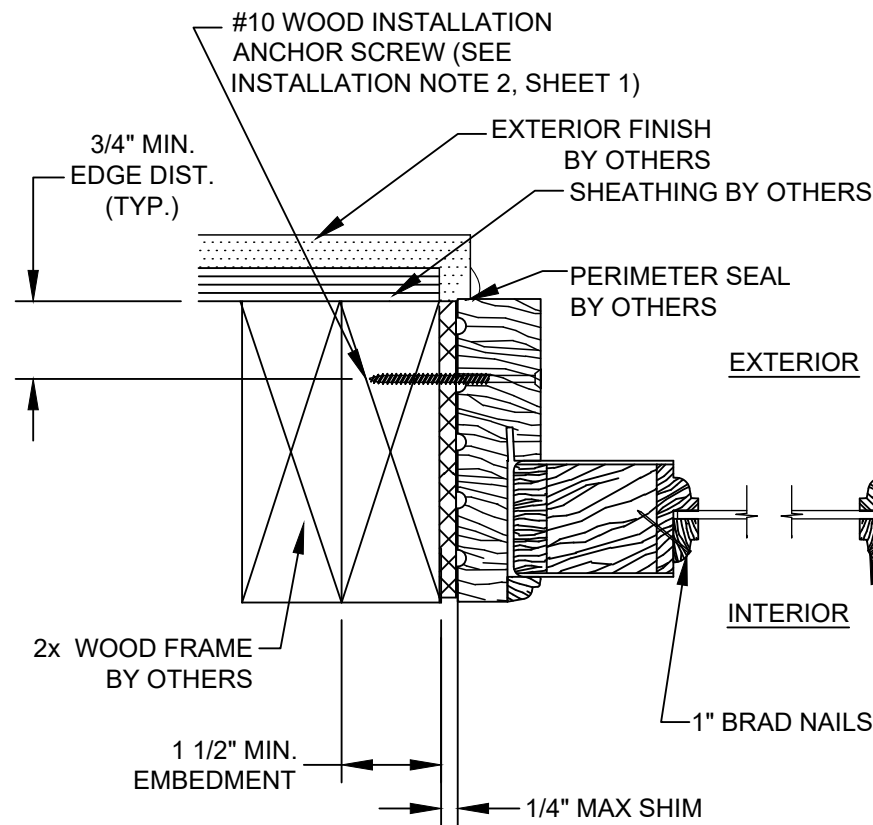
SIMPSON DOOR COMPANY
400 W. SIMPSON AVENUE
MCCLEARY, WASHINGTON 98557

TITLE: GLAZED. & OPAQUE WOOD DOORS WITH SIDELIGHTS
HORIZONTAL SECTIONS

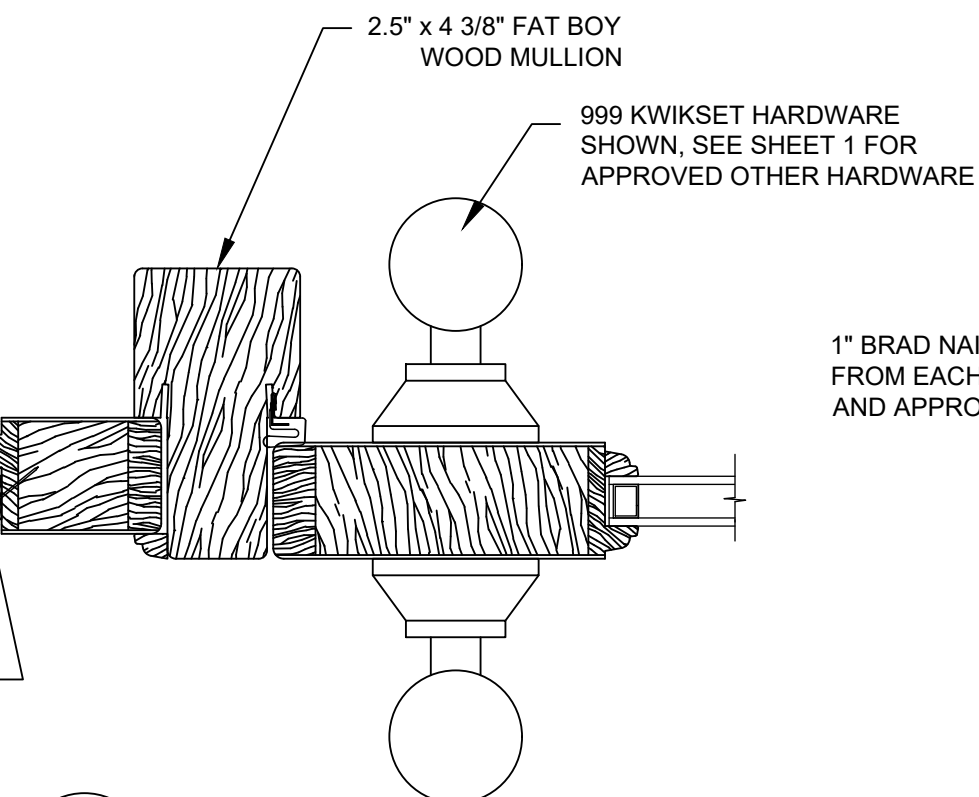
DRAWN BY:	TJH
DATE:	05/31/12
SCALE:	N.T.S.
DRAWING NO.:	SIMP2062
REV:	A
SHEET:	5 OF 9

Robert J. Amoruso
TX P.E. No. 80817

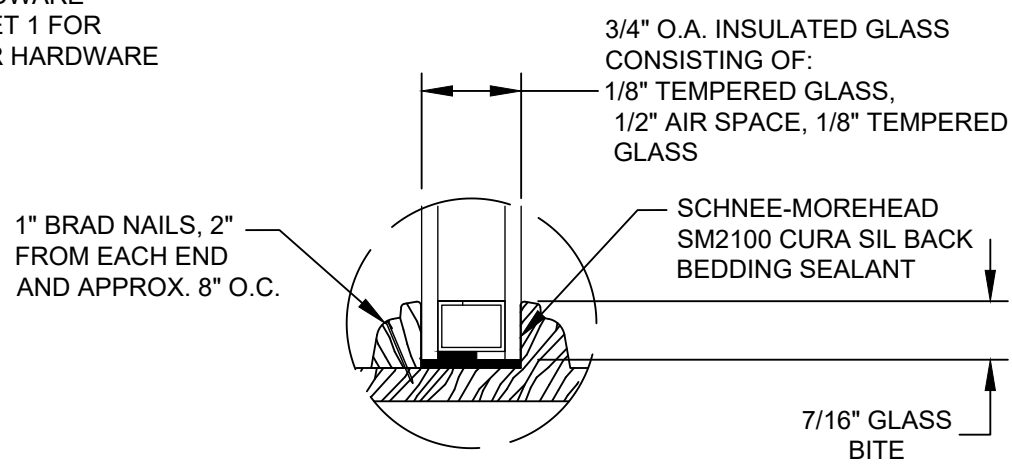
REV	DESCRIPTION	DATE	BY
A	UPDATE FOR RE-EVALUATION	10/26/21	RIA



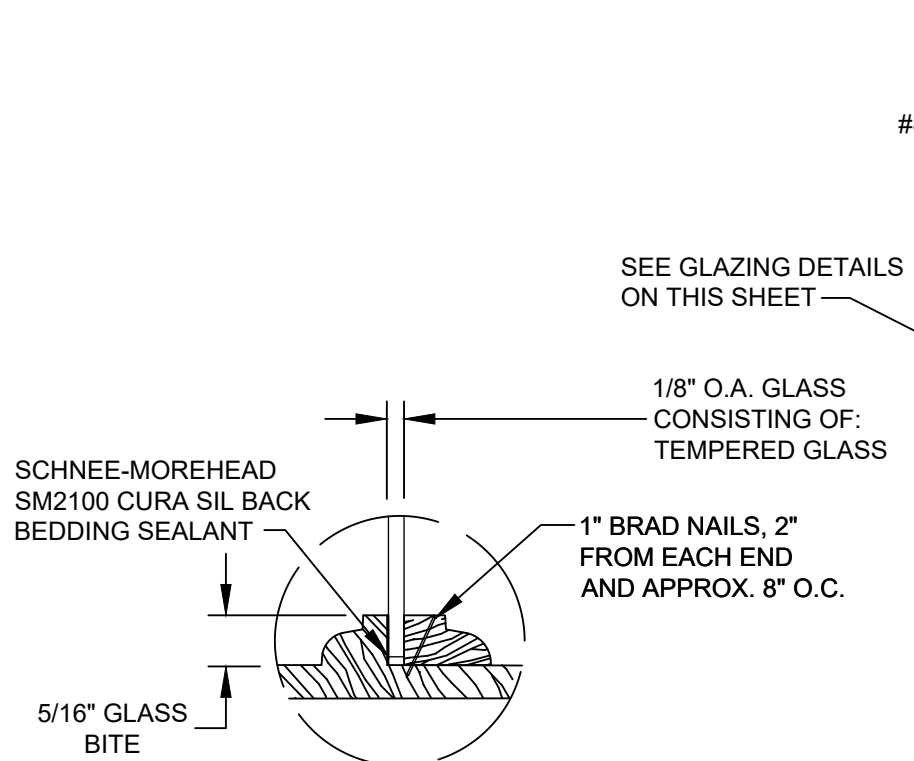
F HORIZONTAL SECTION
WOOD SUBSTRATE



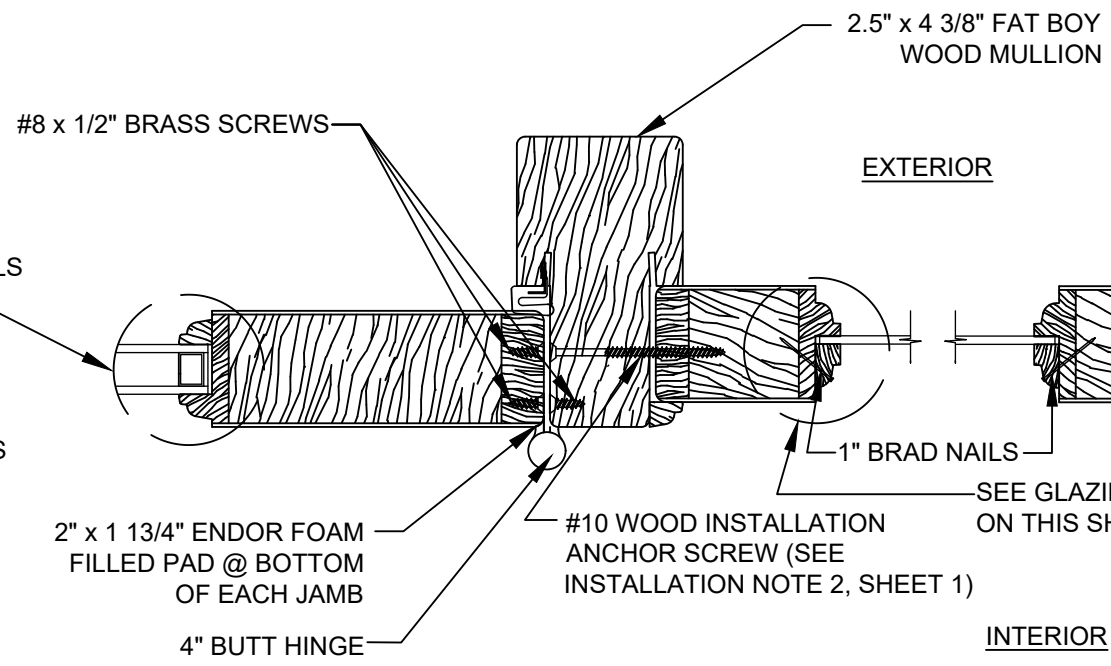
G HORIZONTAL SECTION
FAT BOY MULLION ASSEMBLY



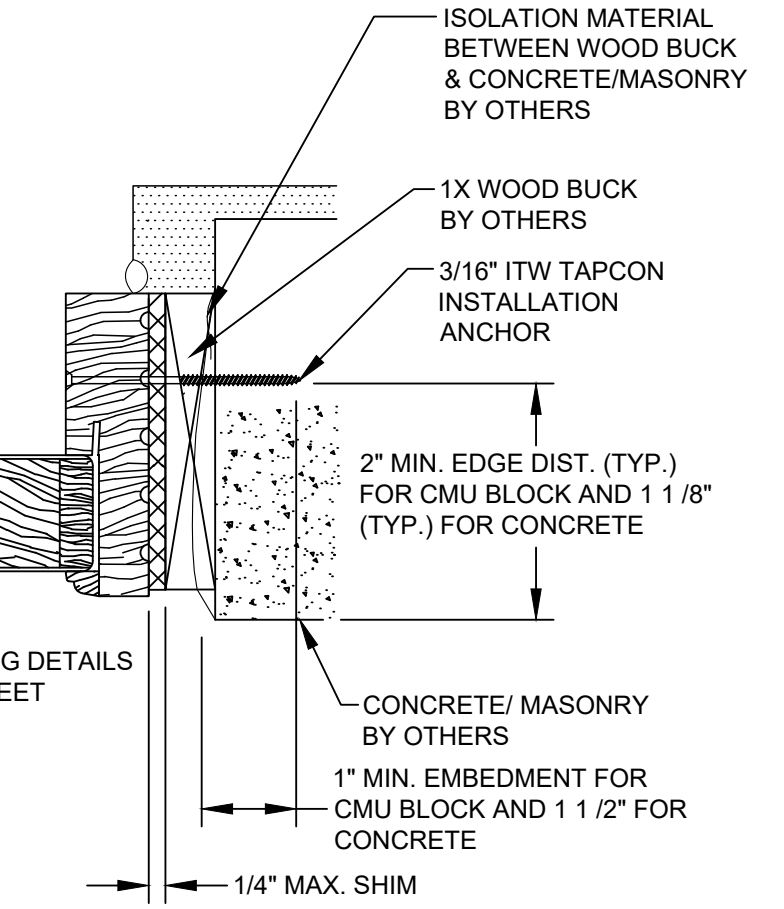
GLAZING DETAIL 2



GLAZING DETAIL 1



H HORIZONTAL SECTION
MULLION AND HINGE



I HORIZONTAL SECTION
CONCRETE / MASONRY SUBSTRATE

PROJECT: #419-1112

REV	DESCRIPTION	DATE	BY
A	UPDATE FOR RE-EVALUATION	10/26/21	RJA

SIMPSON DOOR COMPANY
400 W. SIMPSON AVENUE
MCCLEARY, WASHINGTON 98557

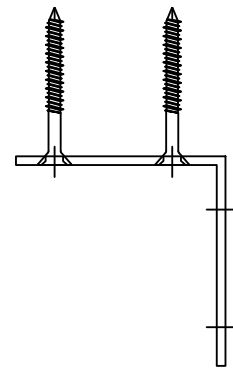
TITLE: GLAZED, & OPAQUE WOOD DOORS WITH SIDELIGHTS
HORIZONTAL SECTIONS & GLAZING DETAILS

PREPARED BY: T.J.H.
SCALE: N.T.S.
REV: A

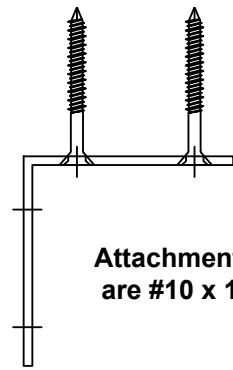
DATE: 05/31/12
DRAWING NO: SIMP2062
SHEET: 6 OF 9

PTC PRODUCT DESIGN GROUP, LLC
PO BOX 520775
LONGWOOD, FLORIDA 32752
TX CERTIFICATE OF REGISTRATION: F-18749
Phone: 321.690.1788
Fax: 321.690.1789
Email: info@pdc-corp.com

Robert J. Amoruso
TX P.E. No. 80817



Attachment of Clip Angles to Concrete
Substrate are 1/4" x 2" Flat Head ITW Tapcon

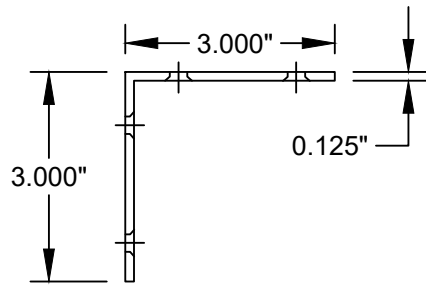


Attachment of Clip Angles to Wood
Substrate are #10 x 2" Flat Head SMS

Attachment of Clip angles to Mullion
are #10 x 1-1/4" Flat Head SMS

Note: Notch the top and bottom of the mullion to receive the mullion clips. This will allow the frame members to sit flush against the mullion

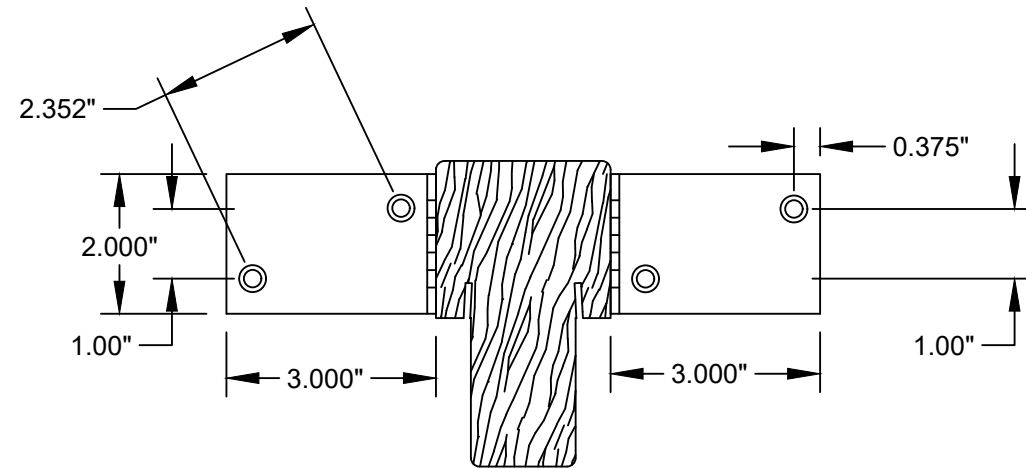
MULLION ANCHOR DETAIL



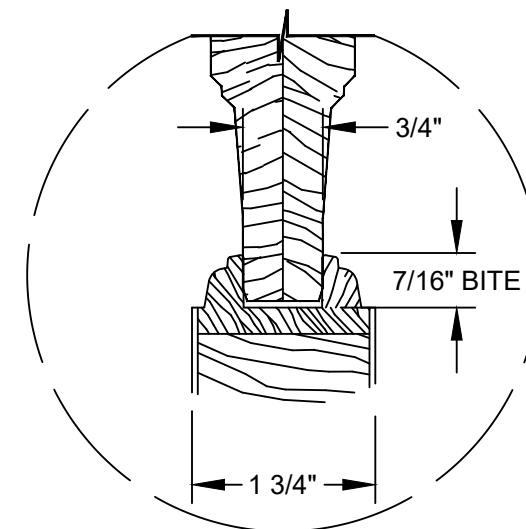
13 ANGLE BRACKET

INSTALLATION NOTES:

- FOR CLIP ATTACHMENT TO WOOD SUBSTRATES USE FOUR (4) #10 X 2" LONG OR LONGER WOOD SCREWS PER CLIP LEG INTO THE INSTALLATION BUCKING OR FRAME WITH A MINIMUM OF 1 1/2" EMBEDMENT INTO SUBSTRATE AND MAINTAINING AT LEAST 3/4" MINIMUM EDGE DISTANCE IS REQUIRED BASED ON THE ANALYSIS USED TO GENERATE THIS DETAIL.
- FOR CLIP ATTACHMENT TO CMU BLOCK OR CONCRETE SUBSTRATES USE A TOTAL OF (4) FOUR 3/16" DIAMETER MASONRY ANCHOR TWO (2) PER EACH CLIP LEG INTO THE INSTALLATION BUCKING OR FRAME WITH A MINIMUM OF 1" EMBEDMENT INTO SUBSTRATE FOR CMU BLOCK AND 1 1/2" EMBEDMENT FOR CONCRETE, MAINTAINING AT LEAST 2" MINIMUM EDGE DISTANCE FOR CMU AND 1 1/8" FOR CONCRETE. EACH CLIP ANCHOR HOLE SPACING MUST BE LOCATED AT LEAST 2 1/4" SPACING BETWEEN ANCHORS.
- FOR CLIP ATTACHMENT TO MULLION END, USE FOUR (4) #10 X 1 1/4" WOOD SCREWS TWO (2) PER EACH CLIP LEG.



MULLION POST



WOOD PANEL DETAIL

RAISED WOOD PANEL
(DOOR LEAF ONLY)

PROJECT: #419-1112

SIMPSON DOOR COMPANY
400 W. SIMPSON AVENUE
MCCLEARY, WASHINGTON 98557

TITLE: GLAZED & OPAQUE WOOD DOORS WITH SIDELIGHTS
MULLION END ANCHOR DETAILS

DRAWN BY: TJH

DATE: 05/31/12

SCALE: N.T.S.

REV: A

DRAWING NO: SIMP2062

SHEET: 7 OF 9

Robert J. Amoruso
TX P.E. No. 80817

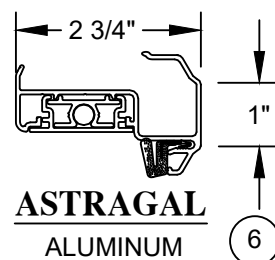
PTC PRODUCT DESIGN GROUP, LLC
PO BOX 520775
LONGWOOD, FLORIDA 32752
TX CERTIFICATE OF
REGISTRATION NO. F-18740
Phone: 321.690.1788
Fax: 321.690.1789
Email: info@ptc-corp.com

BY: RJA

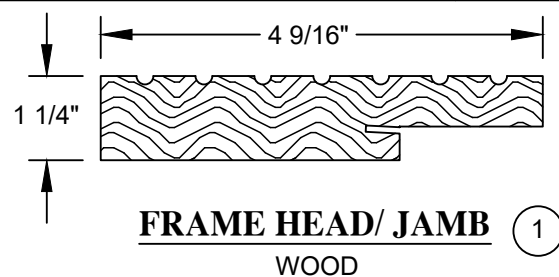
DATE: 10/26/21

DESCRIPTION: UPDATE FOR RE-EVALUATION

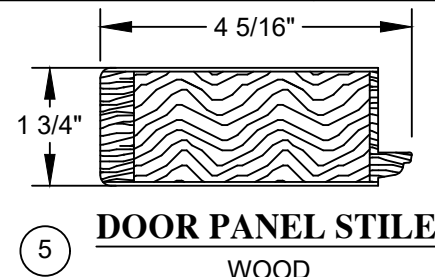
REV: A



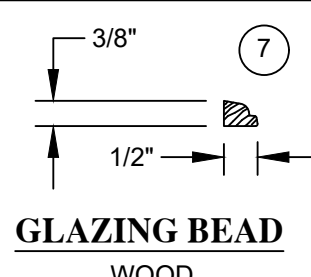
ASTRAGAL
ALUMINUM (6)



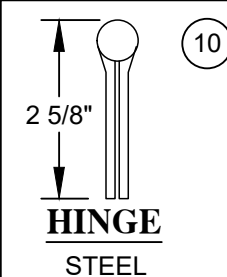
FRAME HEAD/ JAMB
WOOD (1)



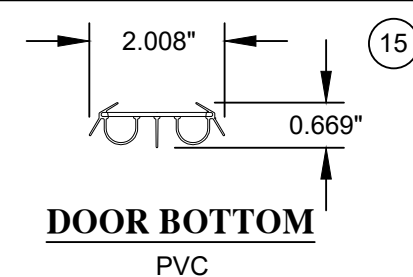
DOOR PANEL STILE
WOOD (5)



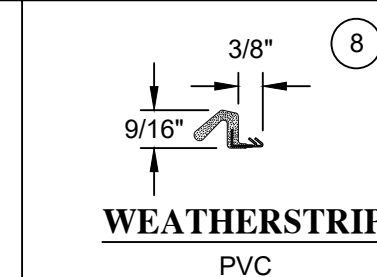
GLAZING BEAD
WOOD (7)



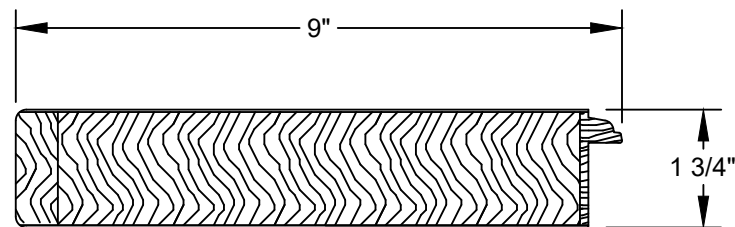
HINGE
STEEL (10)



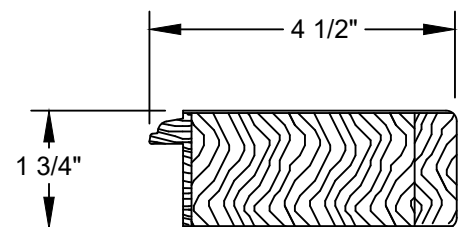
DOOR BOTTOM
PVC (15)



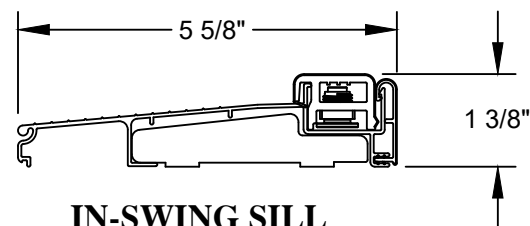
WEATHERSTRIP
PVC (8)



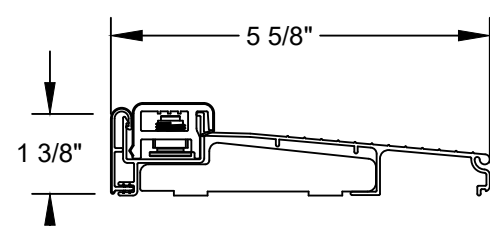
DOOR PANEL SILL
WOOD (4)



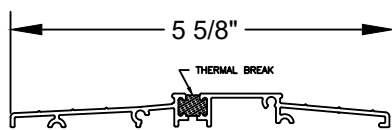
DOOR PANEL HEAD
WOOD (3)



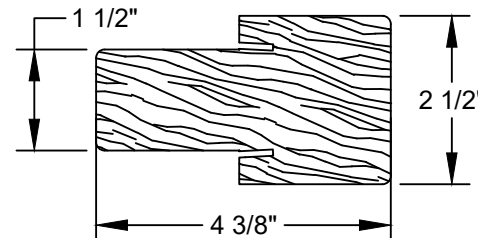
IN-SWING SILL
ALUMINUM 0.053" TYP.
WALL THICKNESS (2)



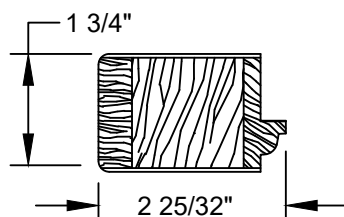
20 Young Mfg Sill - Inswing
Aluminum/Oak



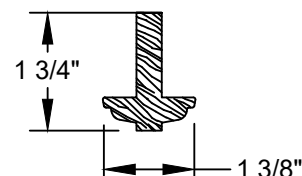
IN-SWING SILL -ADA (19)



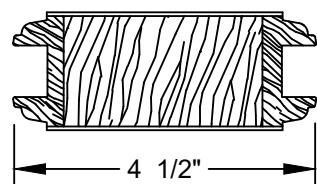
7 Fat Boy Mull
Wood



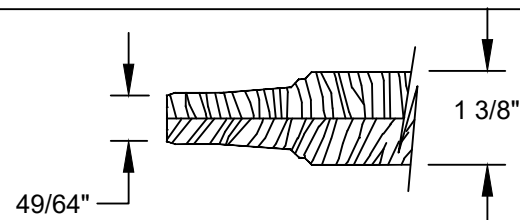
29 Fixed Stile
Wood



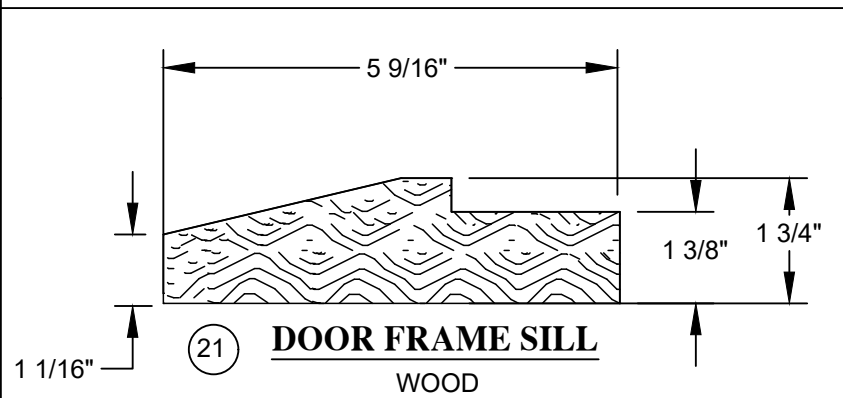
11 IG TDL Bar
Wood



10 Door Mutt
Wood



12 DOOR PANEL
Wood



21 DOOR FRAME SILL
WOOD

ITEM	DESCRIPTION	PART #	MATERIAL	MANUFACTURER
1	FRAME HEAD & JAMB		PINE	SIMPSON DOOR
2	FRAME SILL	ZA15625	6063-T6 ALUMINUM	ENDURA
3	DOOR PANEL HEAD		WESTERN HEMLOCK *	SIMPSON DOOR
4	DOOR PANEL SILL		WESTERN HEMLOCK *	SIMPSON DOOR
5	DOOR PANEL STILE		WESTERN HEMLOCK *	SIMPSON DOOR
6	ASTRAGAL		ALUMINUM	ENDURA ULTIMATE
7	GLAZING BEAD		WESTERN HEMLOCK *	SIMPSON DOOR
8	WEATHERSTRIPPING	QEBD 650	PVC	SCHLEGAL
9	NOT USED			
10	4" BUTT HINGES		STEEL	
11	STANDARD LOCKSET		STEEL	KWIKSET/SCHLAGE
12	LOCK SET MULTIPOINT		STEEL	W&F
13	3" X 3" X 2" ANGLE	-----	ALUMINUM	PURCHASE
14	1/8" TEMPERED GLASS		GLASS	PURCHASE
15	BOTTOM RAIL SWEEP		PVC	ENDURA
16	#10 x 2 1/4" WOOD SCREW		STEEL	
17	3/4" O.A. INSULATED GLASS CONSISTING OF: 1/8" TEMPERED GLASS, 1/2" AIR SPACE, 1/8" TEMPERED GLASS		GLASS	PURCHASE
19	FRAME SILL I.S. ADA		WOOD	ENDURA
20	FRAME SILL I.S.		ALUMINUM/OAK	YOUNG MANF.
21	FRAME SILL WOOD		OAK OR MAHOGANY	SIMPSON

* DOUGLAS FIR MAY BE USED IN LIEU OF WESTERN HEMLOCK.

PROJECT: #419-1112

SIMPSON DOOR COMPANY
400 W. SIMPSON AVENUE
McCLEARY, WASHINGTON 98557

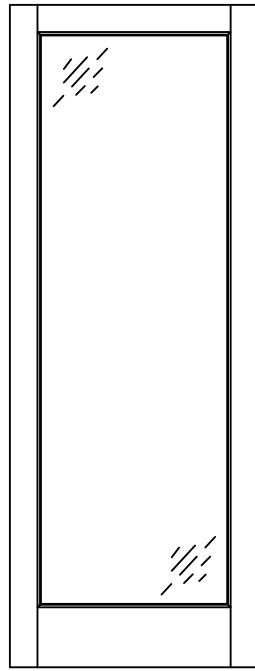
TITLE: GLAZED & OPAQUE WOOD DOORS WITH SIDELIGHTS
BILL OF MATERIALS AND GLAZING DETAILS

PREPARED BY: [Signature]
DRAWN BY: TJH
DATE: 05/31/12
SCALE: N.T.S.
DRAWING NO: SIMP2062
SHEET: 8 OF 9
REV: A

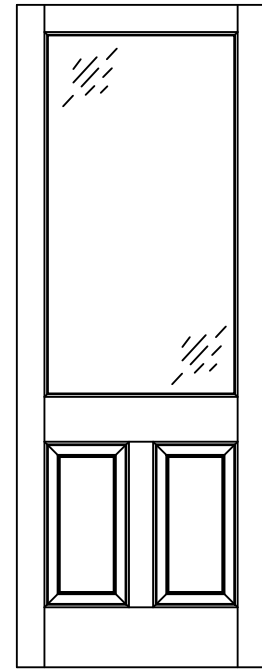
Robert J. Amoruso
TX P.E. No. 80817

PTC PRODUCT DESIGN GROUP, LLC
PO BOX 520775
LONGWOOD, FLORIDA 32752
Phone: 321.690.1788
Fax: 321.690.1789
TX CERTIFICATE OF REGISTRATION: F-181749
Email: info@ptc-corp.com

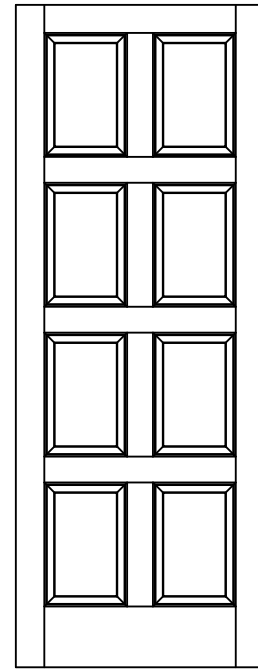
DATE: 10/26/21
DESCRIPTION: UPDATE FOR RE-EVALUATION
BY: RJA
REV: A



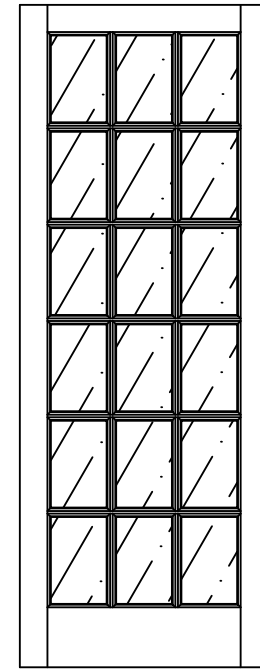
7001
1501
7711



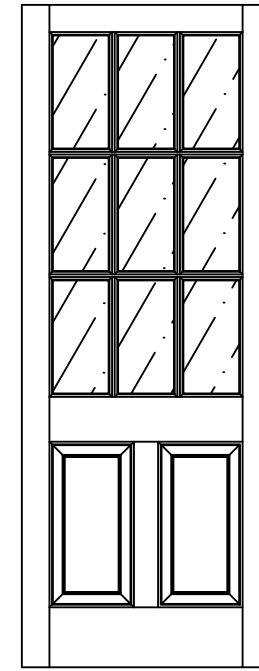
144
7044



2010

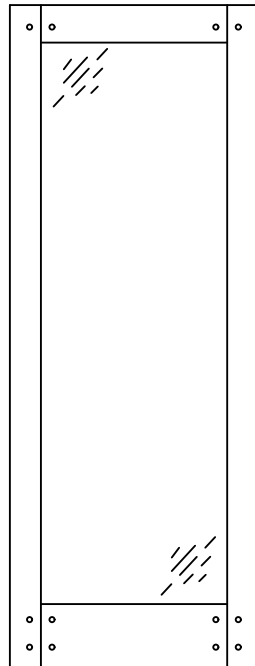


7018
1518

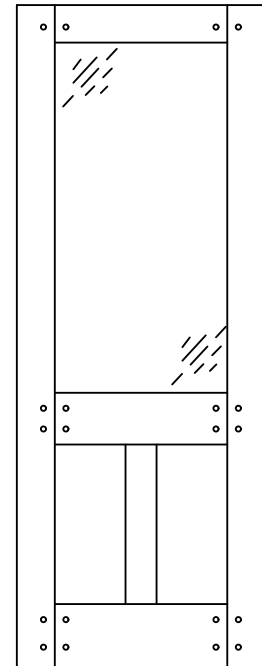


944
7944

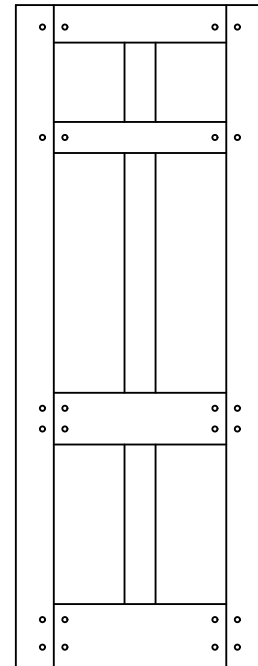
TYPICAL APPROVED PANEL CONFIGURATIONS



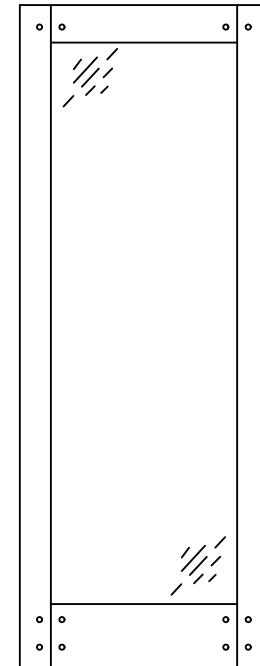
77001



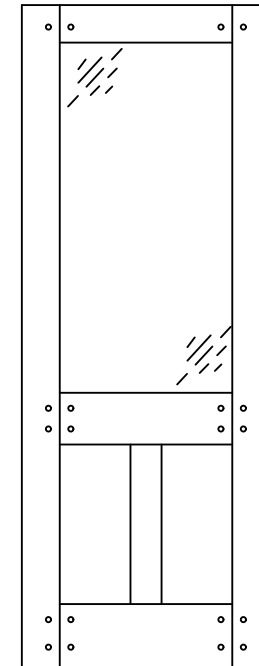
77044



77130



77018
SDL only



77944
SDL only

PROJECT: #419-1112

SIMPSON DOOR COMPANY
400 W. SIMPSON AVENUE
MCCLARY, WASHINGTON 98557

TITLE: GLAZED, & OPAQUE WOOD DOORS WITH SIDELIGHTS
TYPICAL PANEL CONFIGURATIONS

DRAWN BY:	TJH	DATE:	05/31/12
SCALE:	N.T.S.	DRAWING NO.:	SIMP2062
REV:	A	SHEET:	9 OF 9

PTC PRODUCT DESIGN GROUP, LLC
PO BOX 520775
LONGWOOD, FLORIDA 32752
TX CERTIFICATE OF
REGISTRATION NO. F-18740
Phone: 321.690.1788
Fax: 321.690.1789
Email: info@ptc-corp.com

Robert J. Amoruso
TX P.E. No. 80817

REV	DESCRIPTION	DATE	BY
A	UPDATE FOR RE-EVALUATION	10/26/21	RIA