

450-HD-FV FULL VIEW DOOR
EXTERIOR VIEW

DESIGN PRESSURE RATING	IMPACT RATING
±50PSF	LARGE AND SMALL MISSILE IMPACT

MISSILE LEVEL D, WIND ZONE 4 AND HVHZ

TABLE OF CONTENTS	
SHEET NO.	DESCRIPTION
1	ELEVATION, ANCHORING LAYOUT AND NOTES
2 - 4	INSTALLATION DETAILS
5	COMPONENTS

REVISIONS			
REV	DESCRIPTION	DATE	APPROVED
A	ADDED GLASS SEPARATION	07/08/12	R.L.

- NOTES:
- 1) THE PRODUCT SHOWN HEREIN IS DESIGNED AND MANUFACTURED TO COMPLY WITH REQUIREMENTS OF THE 2006 INTERNATIONAL BUILDING CODE AND 2006 INTERNATIONAL RESIDENTIAL CODE WITH TEXAS STATE MODIFICATIONS.
 - 2) WOOD FRAMING OR BUCK OPENING TO BE DESIGNED AND ANCHORED TO PROPERLY TRANSFER ALL LOADS TO STRUCTURE. FRAMING AND MASONRY OPENING IS THE RESPONSIBILITY OF THE ARCHITECT OR ENGINEER OF RECORD.
 - 3) ALLOWABLE STRESS INCREASE OF 1/3 WAS NOT USED IN THE DESIGN OF THE PRODUCT SHOWN HEREIN. WIND LOAD DURATION FACTOR Cd=1.6 WAS USED FOR WOOD ANCHOR CALCULATIONS.
 - 4) FRAME AND DOOR MATERIAL: EXTRUDED ALUMINUM 6063-T5.
 - 5) SCREEN MATERIAL: .035" STAINLESS STEEL WITH 12 x 12 STRANDS PER SQUARE INCH AND .048" OPEN SPACE BETWEEN STRANDS WITH NATURAL FINISH OR PAINTED.
 - 6) APPROVED IMPACT PROTECTIVE SYSTEM IS NOT REQUIRED FOR THIS PRODUCT IN WIND BORNE DEBRIS REGIONS.
 - 7) SHIM AS REQUIRED AT EACH INSTALLATION ANCHOR WITH LOAD BEARING SHIM. SHIM WHERE SPACE OF 1/16" OR GREATER OCCURS. MAXIMUM ALLOWABLE SHIM STACK TO BE 1/4".
 - 8) FOR ANCHORING INTO WOOD FRAMING OR 2X BUCK USE #8 WOOD SCREW WITH SUFFICIENT LENGTH TO ACHIEVE A 1 1/2" MINIMUM EMBEDMENT INTO SUBSTRATE. LOCATE ANCHORS AS SHOWN IN ELEVATIONS AND INSTALLATION DETAILS.
 - 9) FOR ANCHORING INTO METAL STRUCTURE USE #8 SELF DRILLING SCREW WITH SUFFICIENT LENGTH TO ACHIEVE 3-THREADS MINIMUM BEYOND SUBSTRATE. LOCATE ANCHORS AS SHOWN IN ELEVATIONS AND INSTALLATION DETAILS.
 - 10) ALL FASTENERS TO BE CORROSION RESISTANT.
 - 11) INSTALLATION ANCHORS SHALL BE INSTALLED IN ACCORDANCE WITH ANCHOR MANUFACTURER'S INSTALLATION INSTRUCTIONS, AND ANCHORS SHALL NOT BE USED IN SUBSTRATES WITH STRENGTHS LESS THAN THE MINIMUM STRENGTH SPECIFIED BELOW:
A. WOOD: MINIMUM SPECIFIC GRAVITY OF G=0.42
B. METAL STRUCTURE: STEEL 18GA., 33KSI MINIMUM OR 6063-T5 ALUMINUM 1/8" THICK MINIMUM.
 - 12) SIX HINGES ARE LOCATED 12" FROM THE TOP AND 12" MAXIMUM O.C. THEREAFTER.
 - 13) DEADBOLTS ARE LOCATED INSIDE OF DOOR AT 13", 42" AND 72" FROM HEAD.

TAPCO INCORPORATED
1815 McCULLOUGH BLVD.
TUPELO, MS 38801

450-HD-FV FULL VIEW DOOR
38" x 87" IMPACT
ELEVATION, ANCHORING LAYOUT AND NOTES

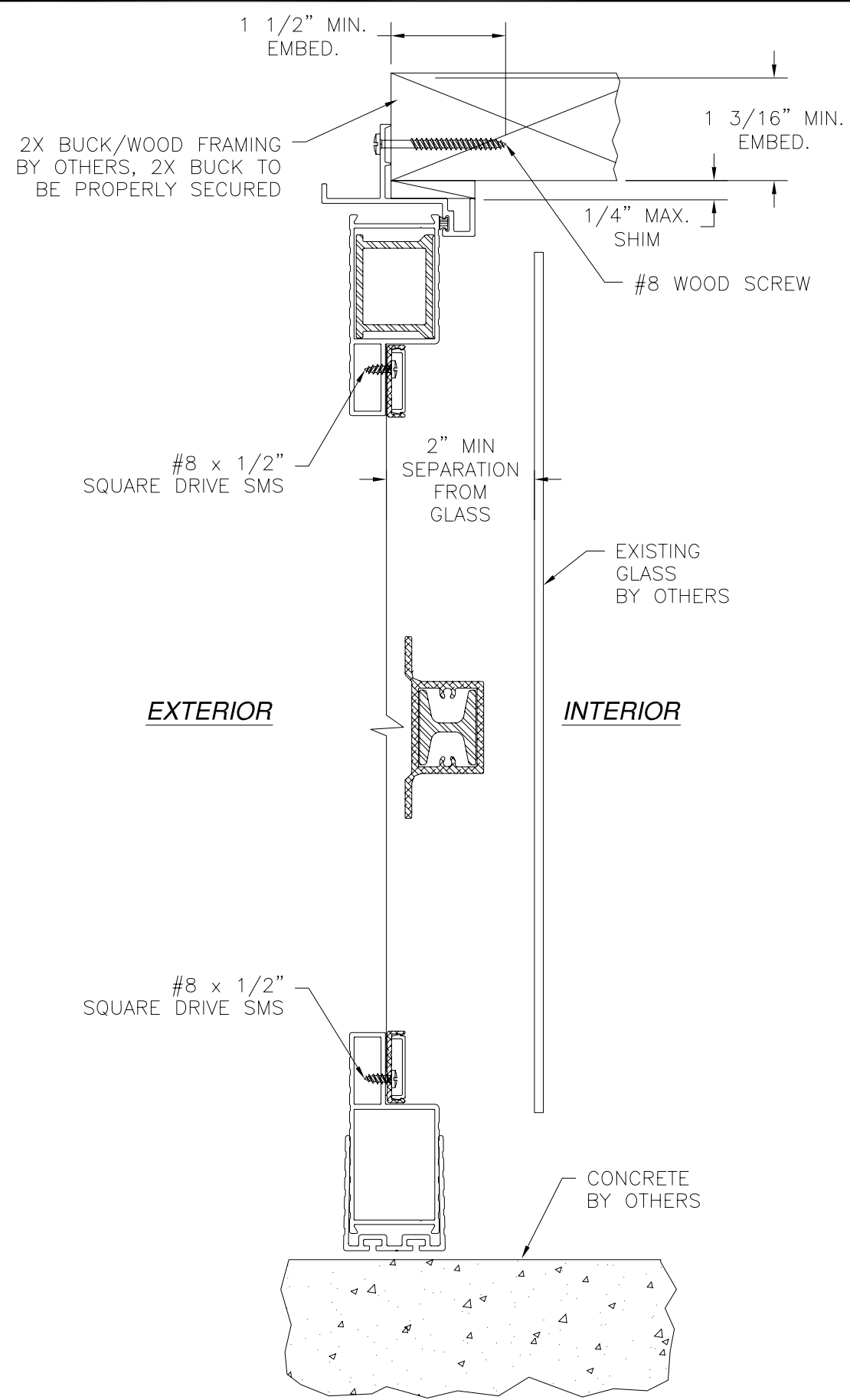
DRAWN: V.L.	DWG NO. 08-01374	REV A
SCALE NTS	DATE 10/19/11	SHEET 1 OF 4

SIGNED: 07/09/2012

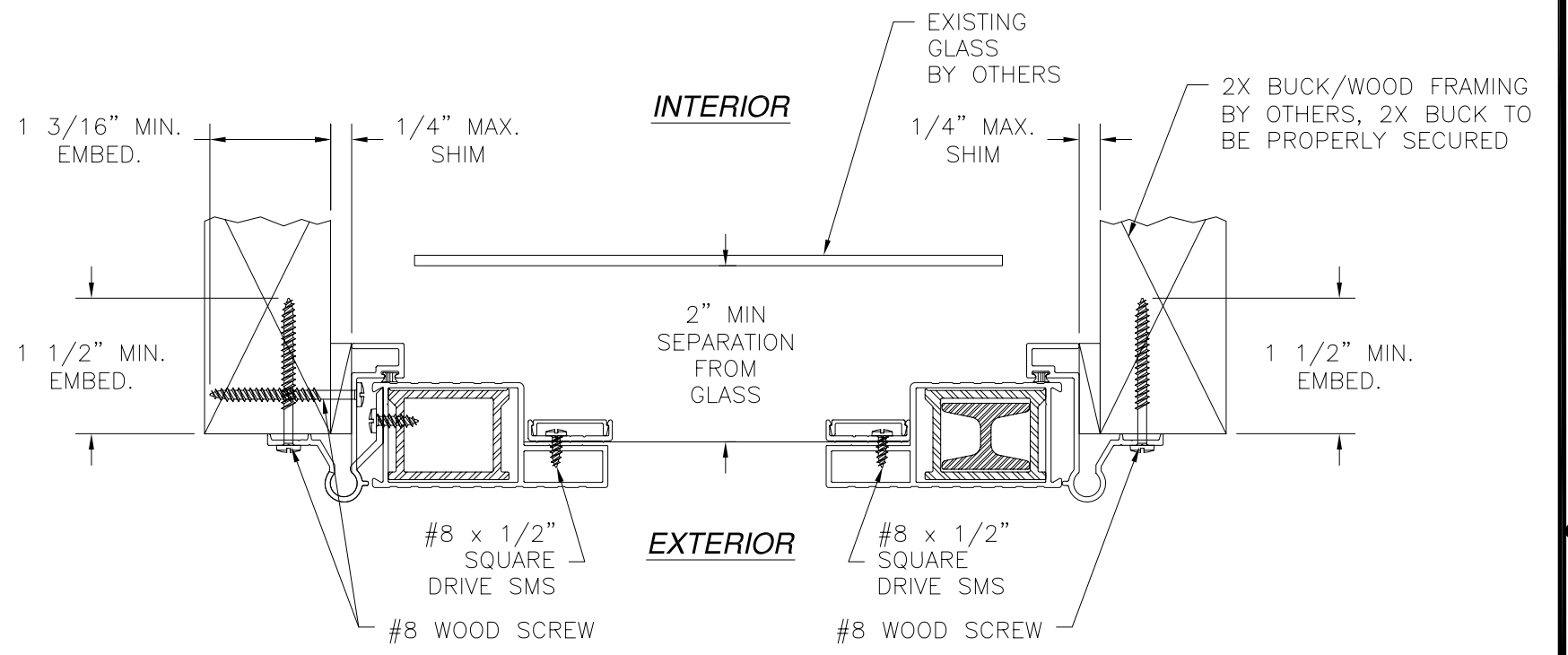


Luis R. Lomas P.E.
Texas No. 101889

REVISIONS			
REV	DESCRIPTION	DATE	APPROVED
A	ADDED GLASS SEPARATION	07/08/12	R.L.



VERTICAL CROSS SECTION
2X BUCK/WOOD FRAMING INSTALLATION DETAIL



HORIZONTAL CROSS SECTION
2X BUCK/WOOD FRAMING INSTALLATION DETAIL

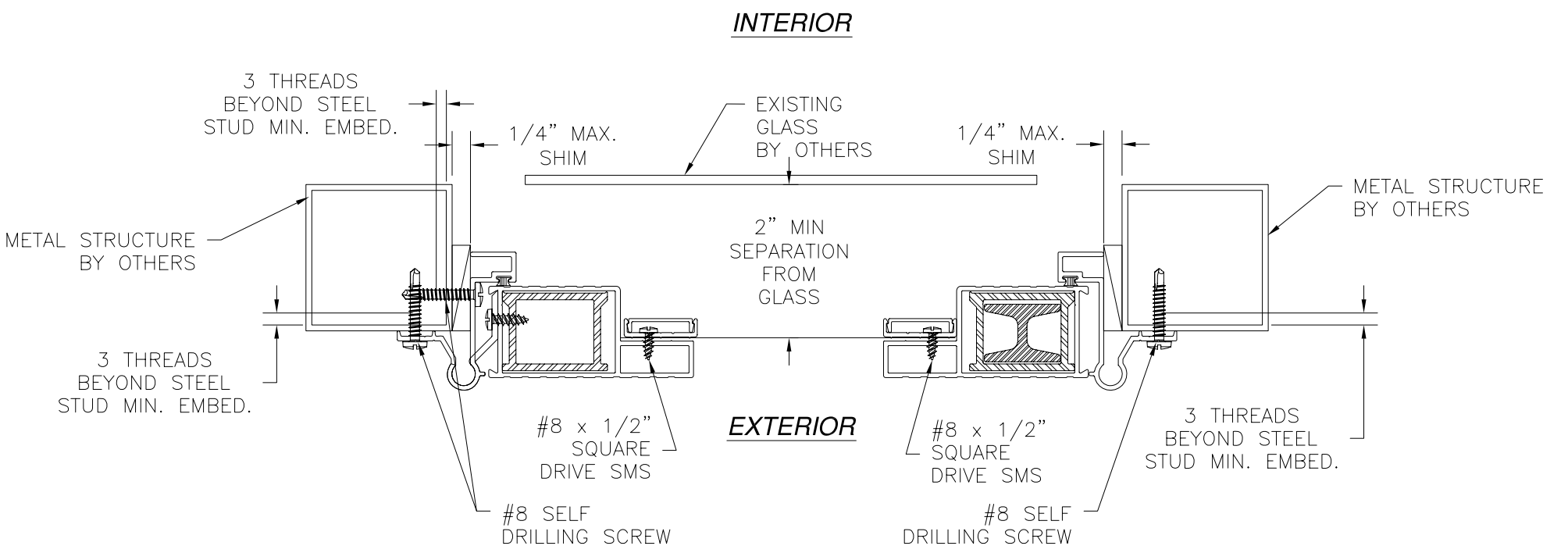
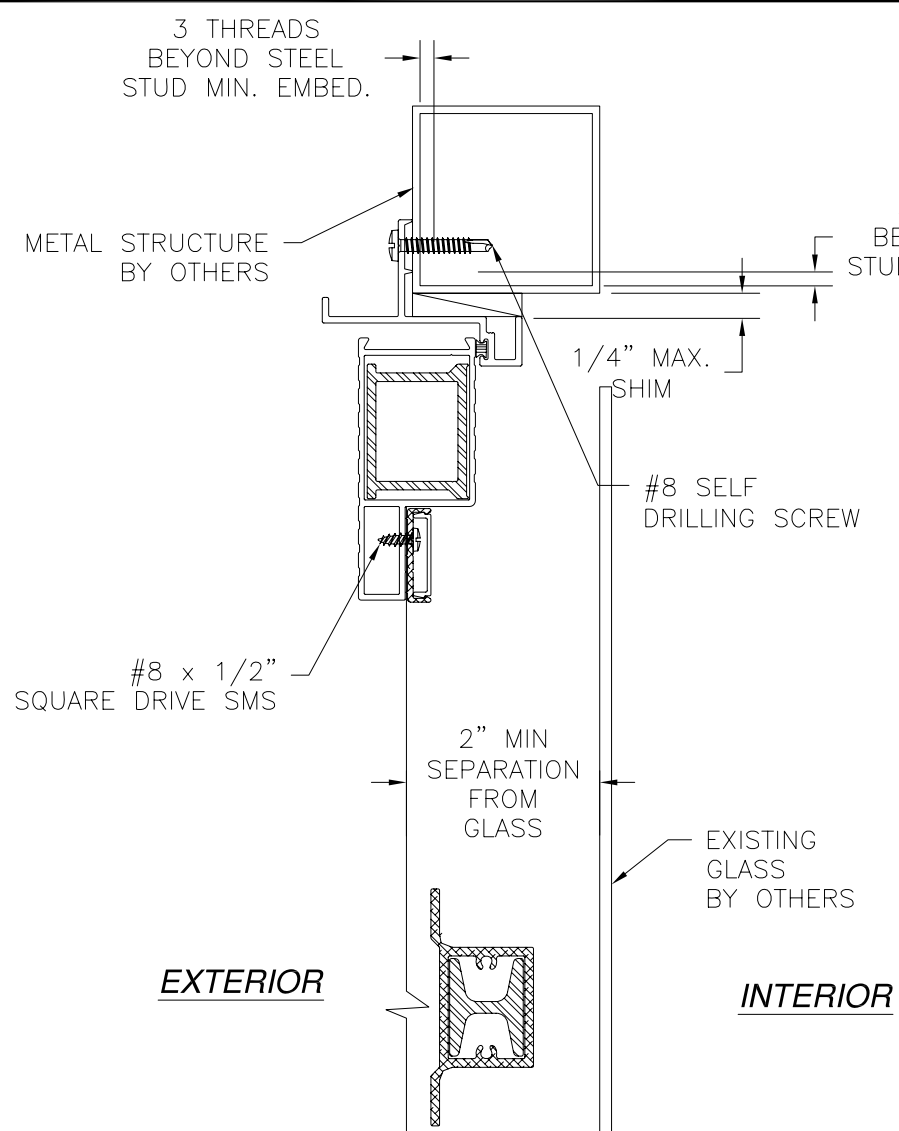
TAPCO INCORPORATED
1815 McCULLOUGH BLVD.
TUPELO, MS 38801

450-HD-FV FULL VIEW DOOR
38" x 87" IMPACT
INSTALLATION DETAILS

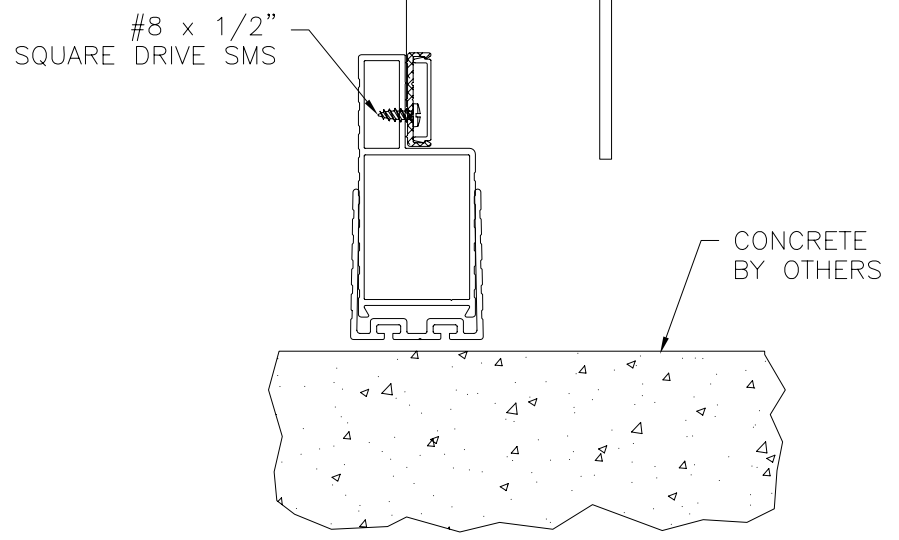
DRAWN: V.L.	DWG NO. 08-01374	REV A
SCALE NTS	DATE 10/19/11	SHEET 2 OF 4

Luis R. Lomas P.E.
Texas No. 101889

REVISIONS			
REV	DESCRIPTION	DATE	APPROVED
A	ADDED GLASS SEPARATION	07/08/12	R.L.



HORIZONTAL CROSS SECTION
ALUMINUM FRAMING INSTALLATION DETAIL



VERTICAL CROSS SECTION
ALUMINUM FRAMING INSTALLATION DETAIL

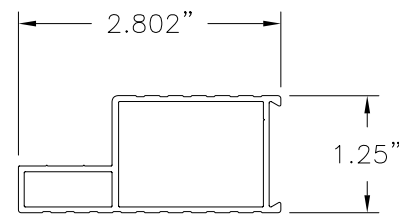
TAPCO INCORPORATED
1815 McCULLOUGH BLVD.
TUPELO, MS 38801

450-HD-FV FULL VIEW DOOR
38" x 87" IMPACT
INSTALLATION DETAILS

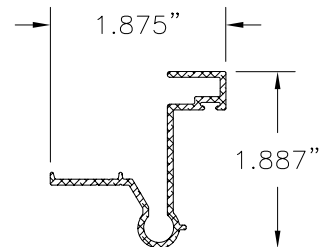
DRAWN: V.L.	DWG NO. 08-01374	REV A
SCALE NTS	DATE 10/19/11	SHEET 3 OF 4

Luis R. Lomas P.E.
Texas No. 101889

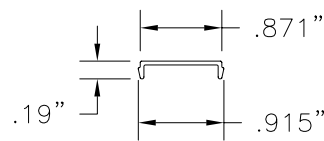
REVISIONS			
REV	DESCRIPTION	DATE	APPROVED
A	ADDED GLASS SEPARATION	07/08/12	R.L.



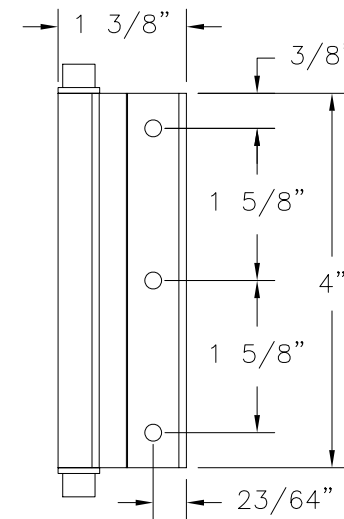
DOOR FRAME (AF-3101)
ALUMINUM 6063-T5 .070" THICK



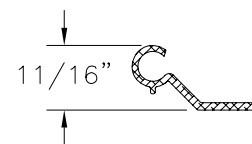
HINGE RAIL (AF-2833)
ALUMINUM 6063-T5 .062" THICK



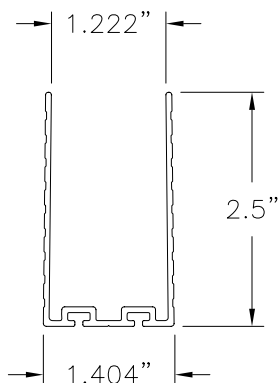
FLAT BAR COVER (V-7247)
EXTRUDED RIGID PVC .040" THICK



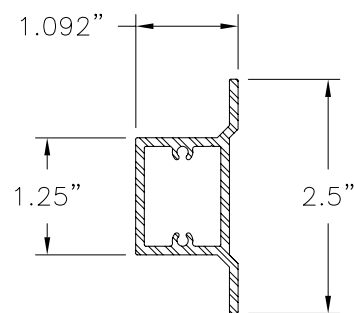
SPRING LOADED HINGE ASSEMBLY
HINGE AMP-SD-061 ALUMINUM 6063-T5 .062" THICK FROM
PROFILE EXTRUSIONS
PINS AND BUSHINGS FROM MERCHANTS FASTENERS
SPRING 1803-3 FROM SOUTHERN PRECISION SPRINGS



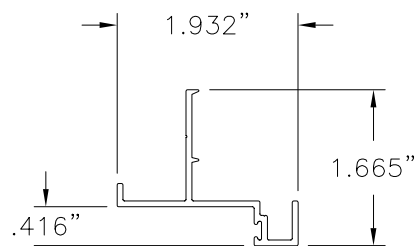
I-BEAM (AF-2598)
ALUMINUM 6063-T5 .125" THICK



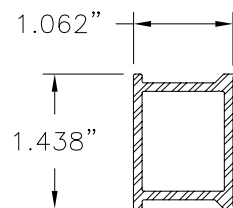
EXPANDER (AF-2838)
ALUMINUM 6063-T5 .066" THICK



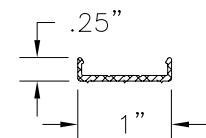
#900 MULL BAR (AF-2694)
ALUMINUM 6063-T5 .092" THICK



HEADER Z-BAR (AF-2834)
ALUMINUM 6063-T5 .062" THICK



INSERT FILLER (AF-3104)
ALUMINUM 6063-T5 .092" THICK



FLAT BAR U-CHANNEL (AC-2719)
ALUMINUM 6063-T5 .060" THICK

HARDWARE SCHEDULE	
A.	4" SPRING LOADED HINGE ASSEMBLY BY TAPCO
B.	#1850 HARDWARE KIT W/DEADBOLT BY WARTIAN
C.	#643 WRIGHT DEADBOLT KIT BY WRIGHT.

TAPCO INCORPORATED
1815 McCULLOUGH BLVD.
TUPELO, MS 38801

450-HD-FV FULL VIEW DOOR
38" x 87" IMPACT
COMPONENTS

DRAWN: V.L.	DWG NO. 08-01374	REV A
SCALE NTS	DATE 10/19/11	SHEET 4 OF 4



Luis R. Lomas P.E.
Texas No. 101889