

COMPLIANCE STATEMENT:
 1. THESE PRODUCTS HAVE BEEN TESTED TO PROTOCOLS TAS 201, 202 & 203-94, ASTM PROTOCOLS E283-04(12), E330-14 AND E331-00(09), AND COMPLY WITH THE 2018 IBC & IRC.

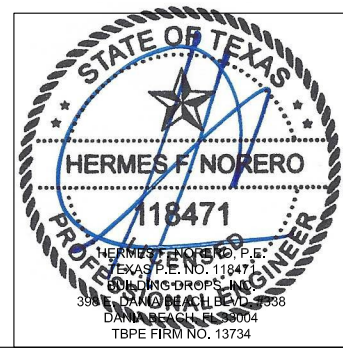
- NOTES:**
1. INTERIOR VIEWS ARE SHOWN FOR ALL ELEVATIONS
 2. SEE TABLE 1 ON SHEET 2 FOR HARDWARE APPLICATIONS AND LIMITATIONS
 3. SEE SHEETS 3 & 14 FOR HINGE REQUIREMENTS AND OPTIONS
 4. SEE SHEET 4 FOR ANCHORING TYPES AND LIMITATIONS. SEE SHEETS 3, 5 AND 6 FOR SILL INSTALLATION DETAILS & CAULKING.
 5. SEE SHEET 5 TABLES 3.1 AND 3.2 FOR WATER RATED THRESHOLD AND WEATHERSTRIPPING INSTALLATION AND LIMITATIONS
 6. SEE SHEET 6 TABLES 4.1 AND 4.2 FOR NON WATER RATED THRESHOLD AND WEATHERSTRIPPING INSTALLATION AND LIMITATIONS
 7. ALL CONFIGURATIONS MEET LARGE AND SMALL MISSILE IMPACT REQUIREMENTS - LARGE MISSILE IMPACT AT (50 F/S)

BEND RADIUS		SCHLAGE LOCK COMPANY, LLC 11819 N. PENNSYLVANIA STREET CARMEL, IN 46032			
THIRD ANGLE PROJECTION		TITLE: STEELCRAFT H SERIES SINGLE FLUSH OUTSWING COMMERCIAL STEEL DOORS WITH AND WITHOUT PANIC EXIT DEVICES			
DRAWN YMF	DATE 05/20/07	FLUSH OUTSWING DOORS AND HARDWARE CONFIGURATIONS COMMERCIAL DOOR OPENING SINGLE FLUSH DOORS.			
CHECKED		SIZE	FLAT	DWG NO. IRFS07-T	REV B 1-9-20
APPROVED		SCALE:	NTS	AUTOCAD	SHEET 1 of 14
ENG. APPVL JPD	10/11/07				

Door Configuration	Maximum Design Pressure, PSF		Maximum Door Opening Size, in.		Locking Hardware Description				Comments
	Positive	Negative	Width	Height	Hardware Family	Model/Series	Strike Models	Brand	
1	75	75	48	96	Mortise Lock	L/LV9400, AD-MD, CO-MD	10-072	Schlage	Functions with deadbolt, 3/4" min. throw latch & 1" min. throw deadbolt
	75	75	48	96	Mortise Lock	LE-MD, LEB-MD	10-072	Schlage	
	75	75	48	96	Mortise Lock	MA	ANSI	Falcon	
2	55	55	48	96	Cylindrical Lock	AL	10-025	Schlage	1/2" min. throw latch
3	65	65	48	96	Cylindrical Lock	D, ND, NDE, NDEB, AD-CY, CO-CY	10-025	Schlage	1/2" min. throw latch
	65	65	48	96		ALX	ANSI		
4	75	75	48	96	Cylindrical Lock	D, ND, NDE, NDEB, AD-CY, CO-CY	10-025	Schlage	3/4" min. throw latch
	75	75	48	96		ALX	ANSI		3/4" min. throw latch
	75	75	48	96		T	ANSI	Falcon	
5	70	70	48	96	Surface Vertical Rod Exit Device	98/9927 & 98/9927-F	299F/499F Top, 304L Bottom	Von Duprin	
	70	70	48	96	Surface Vertical Rod Exit Device	F-25-V & 25-V	3788 Top, 2130 Bottom	Falcon	
6	70	70	48	96	Concealed Vertical Rod Exit Device	98/9947-F & HH98/9947	338 Top, 385A or 304L Bottom	Von Duprin	HH98/9947 device has a 2-3/4" backset
	70	70	48	96	Concealed Vertical Rod Exit Device	F-25-C	4188 Top, 2130 Bottom	Falcon	
7	70	70	48	96	Three-Point Latching Device	98/9957 & 98/9957-F	299F/499F Top/Middle, 304L Bottom	Von Duprin	
8	70	70	48	96	Rim Exit Device	98/99 & 98/99-F	299F/499F	Von Duprin	
	70	70	48	96	Rim Exit Device	88-F	268	Von Duprin	
9	75/100 SEE NOTE 2.	75/100 SEE NOTE 2.	48	96	Rim Exit Device	XP98/99 & XP98/99-F	909/954	Von Duprin	
10	70	70	48	96	Mortise Exit Device	98/9975 & 98/9975-F	575	Von Duprin	
	70	70	48	96	Mortise Exit Device	8875 & 8875-F	575	Von Duprin	
	70	70	48	96	Mortise Exit Device	F-25-M & 25-M	1279	Falcon	
11	55	55	48	96	Exit Alarm Lock	2670 GUARD-X	267	Von Duprin	
12	60	60	48	96	Cyl. Deadlock	B600/700/800	10-055	Schlage	1" min. throw deadbolt (12-631)
13	70	55	48	96	Rim Exit Device	F-25-R & 25-R	299F/499F	Falcon	
14	60	60	48	96	Mortise Lock	L/LV9000, AD-MS, CO-MS, LE-MS, LEB-MS, LE-MB, LEB-MB	10-072	Schlage	Functions without deadbolt, 3/4" min. throw latch
15	75	75	36	84	Mortise Lock	L/LV9000, AD-MS, CO-MS, LE-MS, LEB-MS, LE-MB, LEB-MB	10-072	Schlage	Functions without deadbolt, 3/4" min. throw latch
	75	75	36	84	Mortise Lock	MA	ANSI	Falcon	
16	75	75	36	84	Cylindrical Lock	D, ND, NDE, NDEB, AD-CY, CO-CY	10-025	Schlage	1/2" throw latch

TABLE 1.

- NOTES:**
- SEE SHEETS 8, 9 & 10 FOR LOCKING HARDWARE.
 - DOOR CONFIGURATION 9 IS RATED FOR MAXIMUM DESIGN PRESSURE UP TO ±75 PSF WITH ZERO INT'L THRESHOLD 11A OR FOR DOOR OPENINGS UP TO 3'-0"X7'-0" WITH NGP THRESHOLD 11B AND ±50 PSF FOR DOOR OPENINGS UP TO 4'-0"X8'-0" WITH NGP THRESHOLD 11B WHEN WATER IN FILTRATION REQUIREMENT IS NEEDED. SEE SHEET 5.
 - DOOR CONFIGURATION 9 IS RATED FOR A MAXIMUM DESIGN PRESSURE UP TO ±75 PSF WITH ZERO INT'L THRESHOLD OPTIONS AND UP TO ±100 PSF WITH THE NGP THRESHOLD OPTIONS WHEN WATER INFILTRATION REQUIREMENT IS NOT NEEDED. SEE SHEET 6
 - SCHLAGE AL-SERIES CYLINDRICAL LOCK, DOOR CONFIGURATION 2, IS LIMITED TO ±55 PSF MAXIMUM DESIGN PRESSURE



BEND RADIUS		SCHLAGE LOCK COMPANY, LLC 11819 N. PENNSYLVANIA STREET CARMEL, IN 46032			
 THIRD ANGLE PROJECTION		TITLE: STEELCRAFT H SERIES SINGLE FLUSH OUTSWING COMMERCIAL STEEL DOORS WITH AND WITHOUT PANIC EXIT DEVICES FLUSH OUTSWING DOORS AND HARDWARE CONFIGURATIONS COMMERCIAL DOOR OPENING SINGLE FLUSH DOORS.			
DRAWN YMF	DATE 05/20/07	SIZE	FLAT	DWG NO. IRFS07-T	REV B 1-9-20
CHECKED		SCALE: NTS	AUTOCAD	SHEET	2 of 14
APPROVED					
ENG. APPVL JPD	10/11/07				

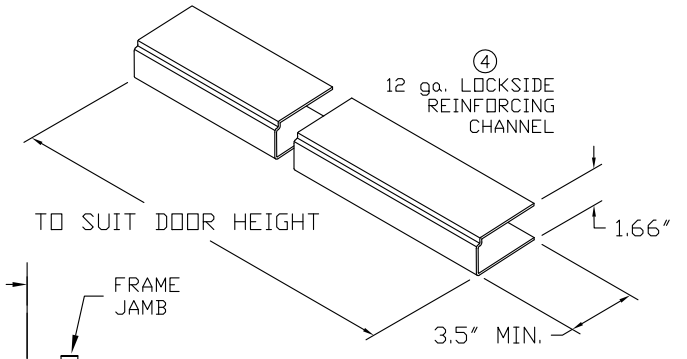
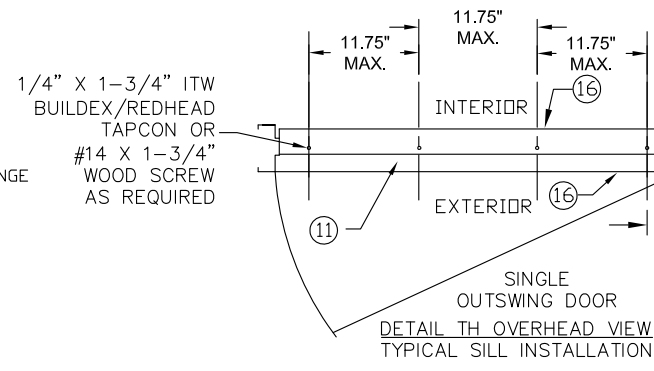
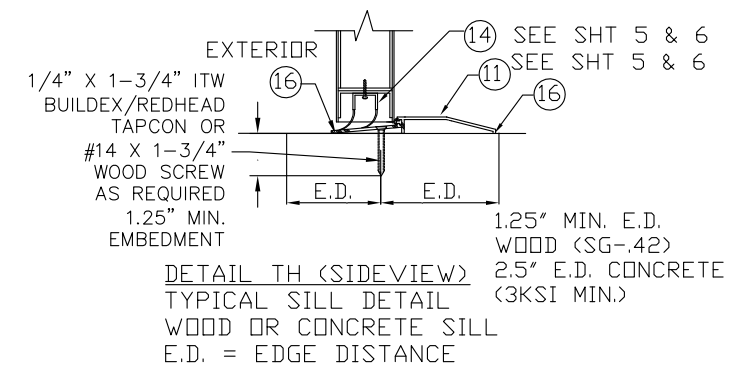
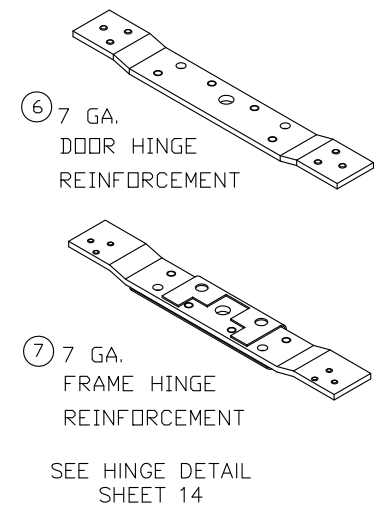
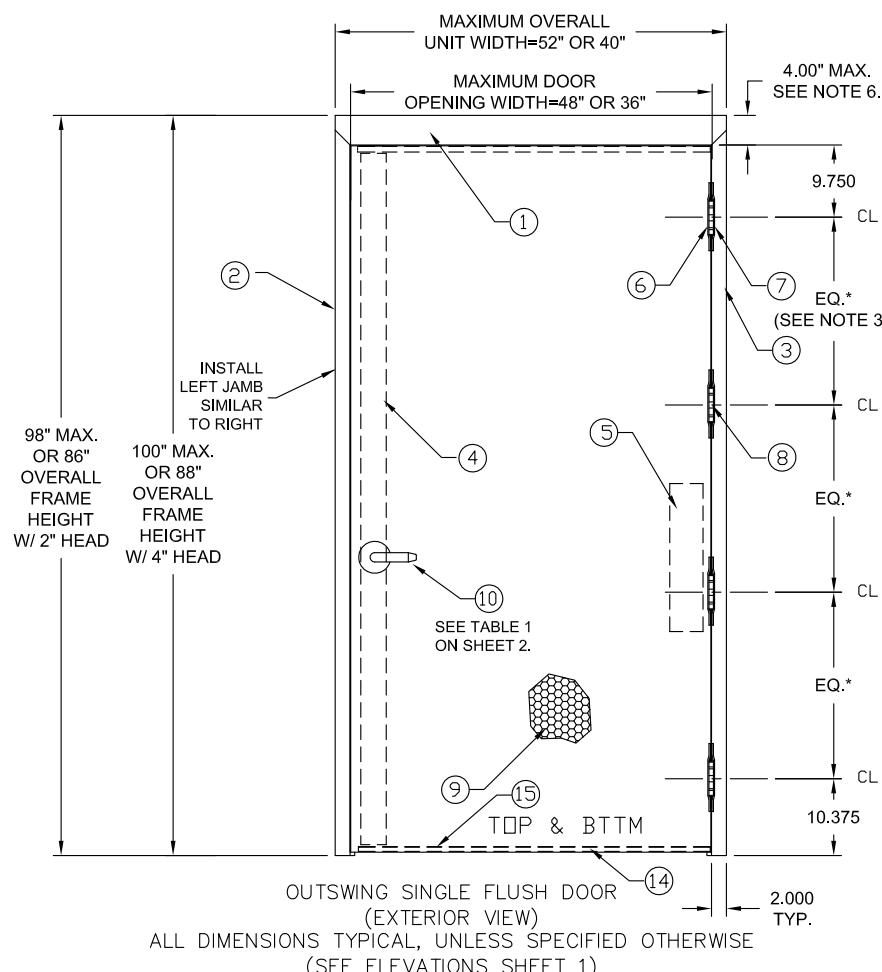
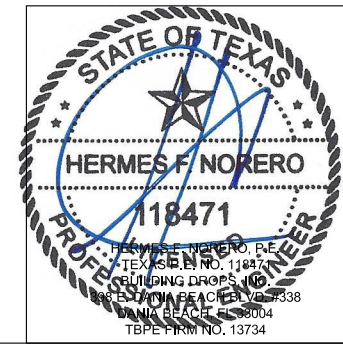


TABLE 2.

QTY	DESCRIPTION	MATERIAL	SIZE
1	HEAD SEE SHT 7 ASTM A366	.053" MIN. STL	MAX. 52"
2	STRIKE JAMB SEE SHT. 7 ASTM A366	.053" MIN. STL	MAX. 100"
3	HINGE JAMB SEE SHT 7 ASTM A366	.053" MIN. STL	MAX. 100"
4	LOCK SIDE REINFORCEMENT CHANNEL	.093" MIN. STL	3.5 X 93.44 MAX
5	HINGE SIDE PANIC REINFORCEMENT	.067" MIN. STL	MAX. 20"
6	HINGE REINFORCEMENT DOOR ASTM A621	.167" MIN. STL.	1.23" X 9.19" MIN.
7	HINGE REINFORCEMENT FRAME ASTM A621	.167" MIN. STL.	1.5" X 9.187" MIN.
8	4.5" X 4.5" BUTT HINGES OPTIONAL CONTINUOUS HINGE	.134" MIN. STL. .075" MIN. STL/.110 ALUM	(8) #12-24 MS PER HINGE MAX. 95"
9	CORE MATERIAL (SHT. 13): D) HONEYCOMB C) STEEL STIFFENED A/F) POLYSTYRENE B/F) POLYURETHANE/POLYISOCYANURATE E) MINERAL BOARD TEMPERATURE RISE CORE		
10	LOCKING HARDWARE - SEE SHEET 2, TABLE 1 THRESHOLD SILL W/BUMPER GASKET		
11	11A) 566 ZERO SEE SHT. 5 WATER RATED & 6 NON-WATER 11B) 950 NGP SEE SHT. 5 WATER RATED & 6 NON-WATER 11C) 65 ZERO SEE SHT. 6 NON-WATER RATED 11D) 568 ZERO SEE SHT. 6 NON-WATER RATED	.125" ALUM. 6063 T5 .078" ALUM. 6063 T5 .125" ALUM. 6063 T5 .125" ALUM. 6063 T5	5.0"X0.5"X48"MAX. 6.0"X0.5"X48"MAX.
12	NOTE 2. JAMB ANCHOR ASTM A924	SEE SHEET 4	
13	SEE SHEET 7 13A) PS074 DOOR SEAL STEELCRAFT 13B)188S, 13C)117S, 13D)8144S, 13E)8150S DOOR SEAL ZERO	TPE SILICONE	MAX. 20'
14	1 FAS-SEAL DOOR SWEEP SEE SHEETS 5 & 6	TPE	MAX. 48"
15	2 END CHANNEL ASTM A924 (14 GA - INVERTED)	.067" MIN. STEEL	.69" X 1.66" X 48" MAX.
16	AS NEEDED CAULK - BUTYL RUBBER OR SILICONE	SEE SHEETS 5 & 6	
17	1 DOOR SLAB (16 OR 14 GA)	SEE SHEET 7	4' X 8' MAX.
18	1 18A) 188S DOOR SEAL BY ZERO INT'L 18B) PS074 DOOR SEAL BY STEELCRAFT	SILICONE SEE SHEET 5 TPE SEE SHEET 5	MAX. 20'
19	2 202N DOOR SEAL BY NGP	TPE SEE SHEET 5	MAX. 96"
20	1 20A) 139 DOOR SWEEP BY ZERO INT'L 20B) 328 DOOR SWEEP BY ZERO INT'L 20C) 200N DOOR SWEEP BY NGP	SEE SHEET 5	MAX. 48"
21	3 21A) 475 ADJUSTABLE SEAL BY ZERO INT'L 1 21B) 170N ADJUSTABLE SEAL BY NGP	TPE SEE SHEET 5	MAX. 96"
22	1 22A) 142 RAIN DRIP BY ZERO INT'L 22B) 11 RAIN DRIP BY ZERO INT'L 22C) 16A RAIN DRIP BY NGP	SEE SHEET 5	MAX. 52"
23	1 TOP CAP GALV. A60 ASTM A924	.020" MIN. STL	0.5" X 1.76" X 48" MAX.
24	1 IVES 698/U698 DOOR VIEWER	BRASS	

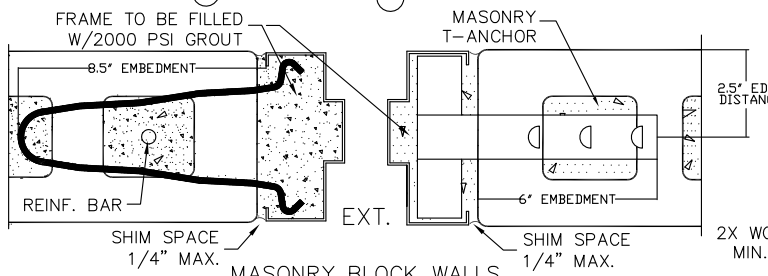
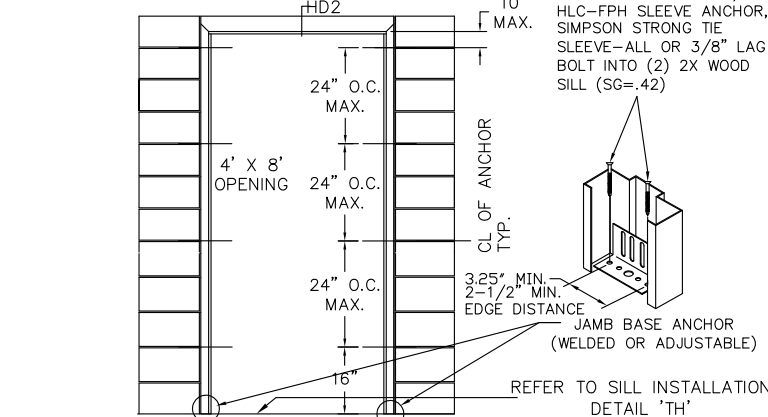
NOTES:

- ANCHOR REQUIREMENTS:
SEE SHEET 4 FOR APPROVED ANCHORS AND INSTALLATION.
- HINGE REQUIREMENTS: 4.5" STD WT. MIN.
FOR DOOR OPENING UP TO 90" HIGH - MIN (3) HINGES
FOR DOOR OPENING OVER 90" - 96" HIGH - MIN (4) HINGES
STD LOCATIONS: 9.75" FROM RABBET IN HEAD TO CL OF TOP HINGE
10.38" FROM FLOOR TO CL OF BOTTOM HINGE, EQUALLY SPACED
IN BETWEEN. HINGE LOCATIONS MAY VARY, MAX SPACING DO NOT EXCEED 35.5" FOR 3 HINGES.
SEE SHEET 14 FOR APPROVED CONTINUOUS HINGE MODELS
- SEE SHEETS 1, 2 & 3 FOR AVAILABLE STANDARD OPENING SIZES AND SPECIFICATIONS.
- HARDWARE INSTALLATION AS PER MANUFACTURER'S INSTRUCTIONS.
- 4" FACE FRAME HEAD IS AVAILABLE. SEE SHEET 4
- APPLY CAULK TO FULL LENGTH OF SILL AND ENTIRE PERIMETER OF FRAME. SEE SHEETS 5 & 6
- WEATHERSTRIPPING:
- WHEN WATER INFILTRATION IS REQUIRED INSTALL PER SHEET 5. (ZERO INTL 566 VS NGP 950)
- WHEN WATER INFILTRATION IS NOT REQUIRED - INSTALL PER SHEET 6. (ZERO INTL 566, 65 & 568 VS NGP 950)
- SEE SHEET 11 FOR HORIZONTAL CROSS SECTION A-A, SEE SHEET 12 FOR VERTICAL CROSS SECTION B-B.
- TYPICAL SILL INSTALLATION SHALL BE ANCHORED PER OVERHEAD AND SIDEVIEW VIEW TH DETAILS ON THIS SHEET.
- ELECTRICAL INSTALLATION AND FIRE RATINGS ARE UNDER SEPARATE APPROVAL AND MUST BE REVIEWED BY CORRESPONDING AUTHORITY.
- OPTIONAL POWER TRANSFERS, MONITORING SWITCHES, SUPPLEMENTAL MAGNETIC LOCKS MAY BE USED AS ALLOWED BY CODE AND IT DOES NOT EFFECT THE MECHANICAL PROPERTIES OF EXIT DEVICE OR LOCK AND/OR INHIBIT EGRESS; TO BE REVIEWED BY THE BUILDING OFFICIAL.

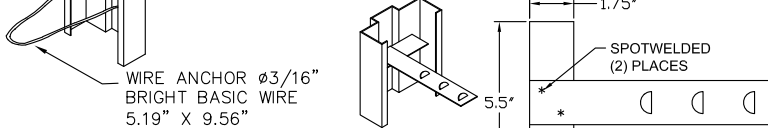


BEND RADIUS		SCHLAGE LOCK COMPANY, LLC 11819 N. PENNSYLVANIA STRET CARMEL, IN 46032			
THIRD ANGLE PROJECTION		TITLE: STEELCRAFT H SERIES SINGLE FLUSH OUTSWING COMMERCIAL STEEL DOORS WITH AND WITHOUT PANIC EXIT DEVICES			
DRAWN YMF	DATE 05/20/07	H-SERIES FLUSH SINGLE DOORS (OUTSWING)			
CHECKED		SIZE	FLAT	DWG NO.	REV
APPROVED				IRFS07-T	B 1-9-20
ENG. APPVL JPD	10/11/07	SCALE:	NTS	AUTOCAD	SHEET 3 of 14

A WIRE OR T MASONRY ANCHOR INTO GROUT FILLED FRAME AND BLOCK WALL

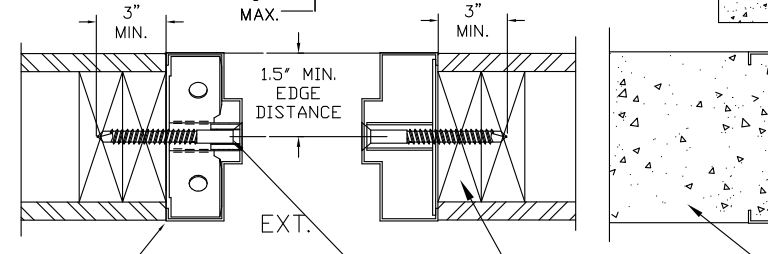
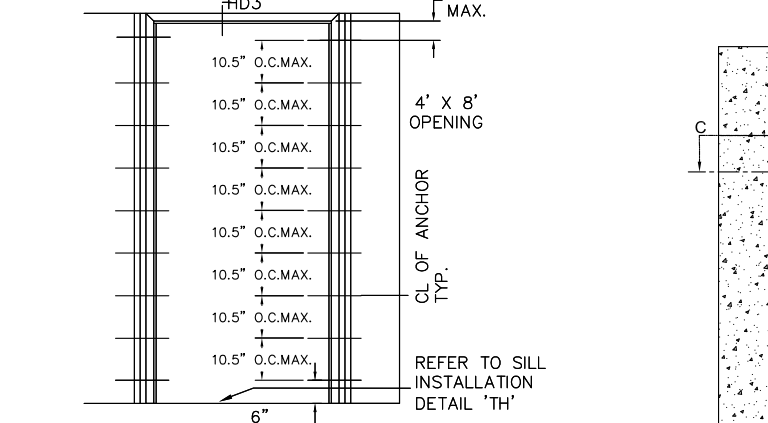


FRAME TO BE FILLED W/2000 PSI GROUT
6.5" EMBEDMENT
REINF. BAR
SHIM SPACE 1/4" MAX.
MASONRY T-ANCHOR
2.5" EDGE DISTANCE
EXT.
6" EMBEDMENT
SHIM SPACE 1/4" MAX.
2X WOOD BUCK MIN. SG=0.42

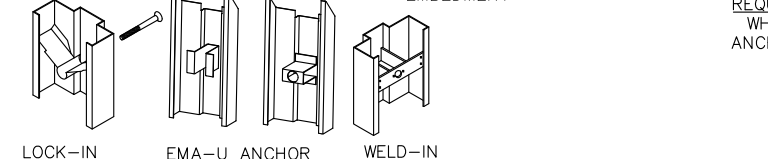


MASONRY BLOCK WALLS CMU (C-90) 2000PSI GOUT FILLED ACI530.1
WIRE ANCHOR #3/16" BRIGHT BASIC WIRE 5.19" X 9.56"
WIRE MASONRY ANCHOR Fultim MIN.=58 KSI Fy MIN.=36 KSI

E EXISTING MASONRY ANCHOR (EMA) WITH LAG BOLT INTO WOOD STUD WALL

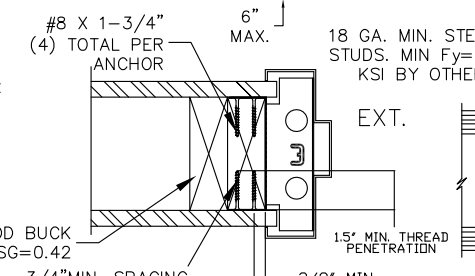
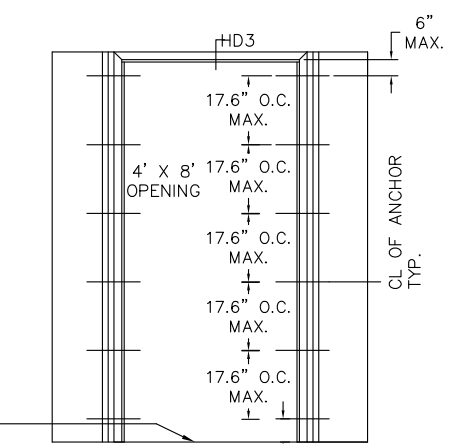


SHIM SPACE 1/4" MAX. TYP.
WOOD STUD WALLS SEE NOTE 1.
LAG SCREW 3/8" DIA. W/3" MIN. EMBEDMENT
EXT.
3" MIN.
1.5" MIN. EDGE DISTANCE
3" MIN.
2X WOOD BUCK MIN. SG=0.42

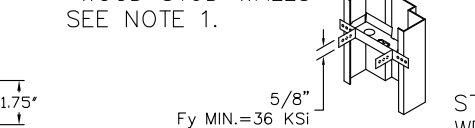


LOCK-IN EMA-U ANCHOR WELD-IN

B WOOD STUD ANCHOR

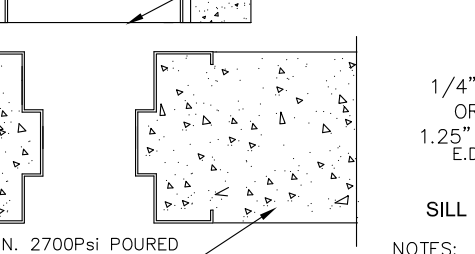
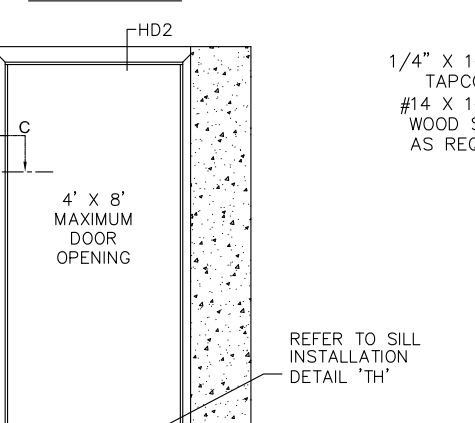


#8 X 1-3/4" (4) TOTAL PER ANCHOR
18 GA. MIN. STEEL STUDS. MIN Fy=33 KSI BY OTHERS
EXT.
3/8" MIN. THREAD PENETRATION
3/8" MIN. EDGE DIST.

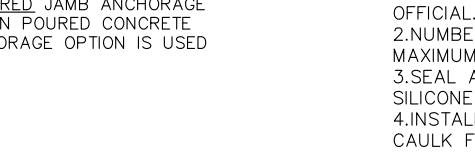


*WOOD STUD WALLS SEE NOTE 1.
WOOD STUD OR UNIVERSAL ANCHOR (LOCK-IN OR WELD-IN)
Fy MIN.=36 KSI

F POURED CONCRETE TILT UP WALL

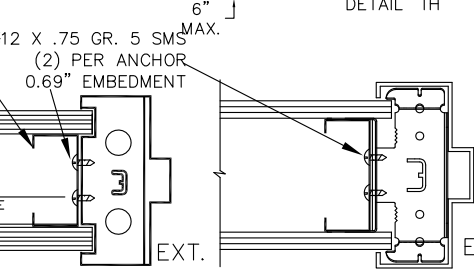
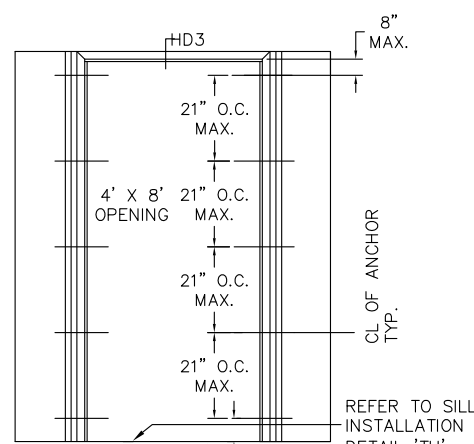


MIN. 2700PSI POURED CONCRETE WALL
CROSS-SECTION C-C
POURED CONCRETE WALL
SEE ANCHOR DETAIL A FOR REQUIRED JAMB ANCHORAGE WHEN POURED CONCRETE ANCHORAGE OPTION IS USED



LOCK-IN EMA-U ANCHOR WELD-IN

C STEEL STUD ANCHOR

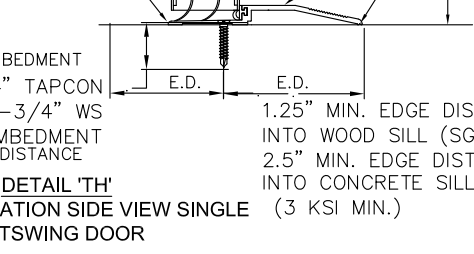
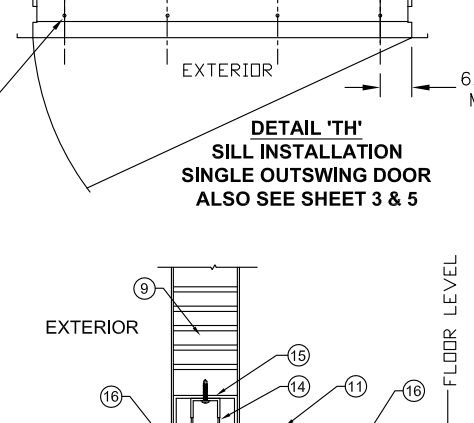


#12 X .75 GR. 5 SMS (2) PER ANCHOR 0.69" EMBEDMENT
18 GA. MIN. STEEL STUDS. MIN Fy=33 KSI BY OTHERS
EXT.
3/8" MIN. EDGE DIST.

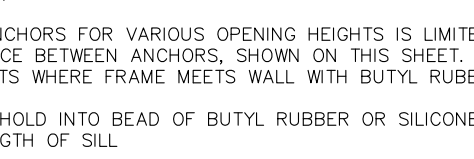


*STEEL STUD WALLS SEE NOTE 1.
STEEL STUD ANCHOR WELD-IN OR LOCK-IN
Fy MIN.=36 KSI
UNIVERSAL ANCHOR WELD-IN OR LOCK-IN

D EXISTING MASONRY ANCHOR (EMA) INTO CONCRETE WALL OR CMU

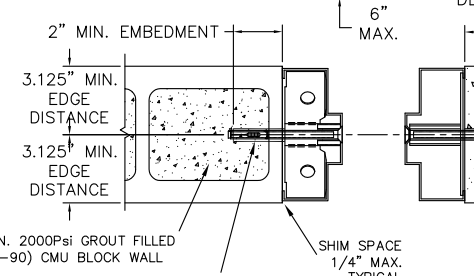
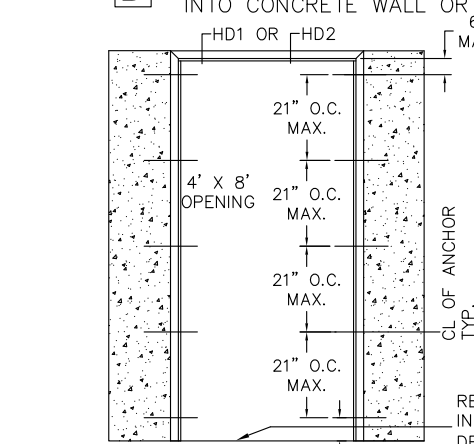


2" MIN. EMBEDMENT
3.125" MIN. EDGE DISTANCE
3.125" MIN. EDGE DISTANCE
MIN. 2000PSI GROUT FILLED (C-90) CMU BLOCK WALL
SHIM SPACE 1/4" MAX. TYPICAL
MIN. 3000PSI CONCRETE
#0.375" WITH 2" MIN. EMBEDMENT POWERS POWER BOLT, POWERS LOK BOLT AS, HILTI HLC-FPH SLEEVE ANCHOR, OR SIMPSON STRONG TIE SLEEVE ALL IN CONCRETE

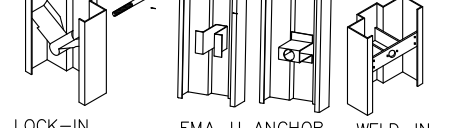


LOCK-IN EMA-U ANCHOR WELD-IN

D EXISTING MASONRY ANCHOR (EMA) INTO CONCRETE WALL OR CMU

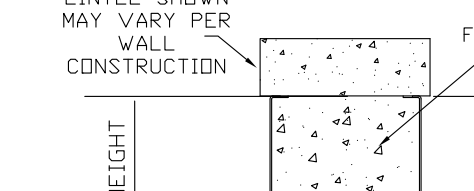


2" MIN. EMBEDMENT
3.125" MIN. EDGE DISTANCE
3.125" MIN. EDGE DISTANCE
MIN. 2000PSI GROUT FILLED (C-90) CMU BLOCK WALL
SHIM SPACE 1/4" MAX. TYPICAL
MIN. 3000PSI CONCRETE
#0.375" WITH 2" MIN. EMBEDMENT POWERS POWER BOLT, POWERS LOK BOLT AS, HILTI HLC-FPH SLEEVE ANCHOR, OR SIMPSON STRONG TIE SLEEVE ALL IN CONCRETE

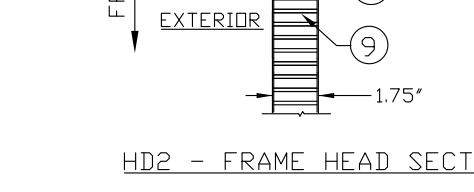


LOCK-IN EMA-U ANCHOR WELD-IN

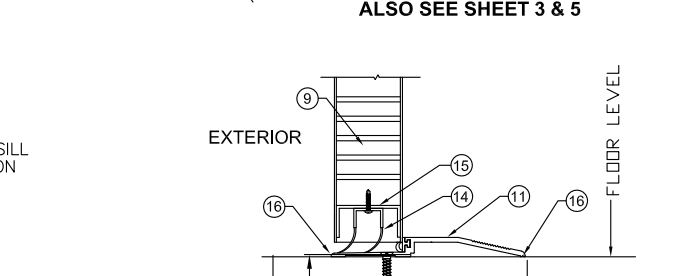
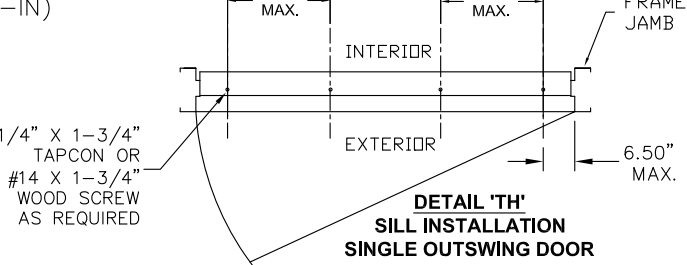
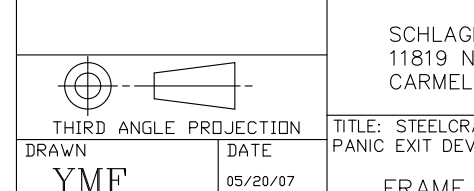
HD1 - FRAME HEAD SECTION



HD2 - FRAME HEAD SECTION

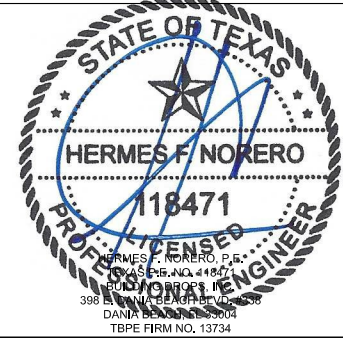
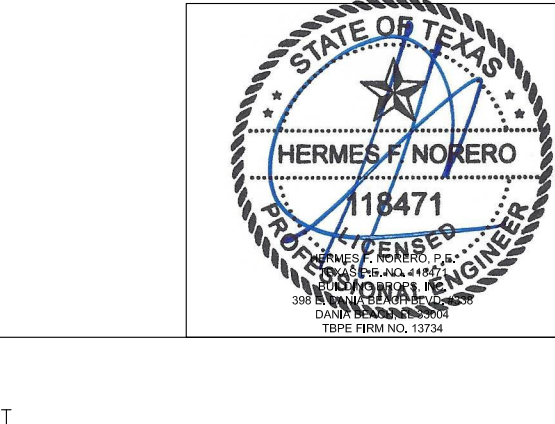
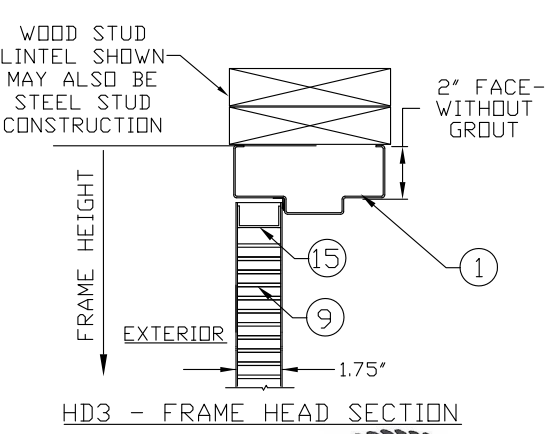
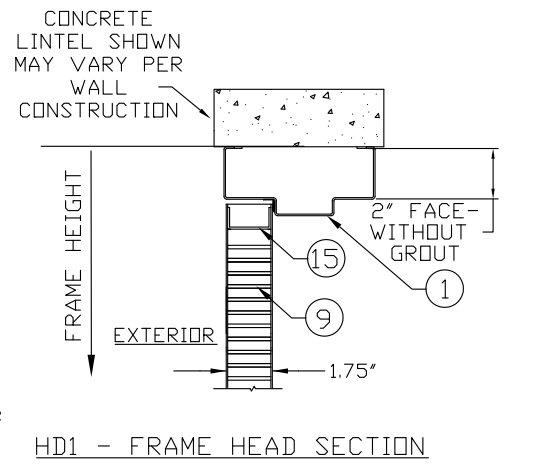


HD3 - FRAME HEAD SECTION



1/4" X 1-3/4" TAPCON OR #14 X 1-3/4" WOOD SCREW AS REQUIRED
DETAIL 'TH' SILL INSTALLATION SINGLE OUTSWING DOOR ALSO SEE SHEET 3 & 5
EXT. INTERIOR
FRAME JAMB
6.50" MAX.
FLOOR LEVEL
9 15 14 11 16
EMBEDMENT 1/4" X 1-3/4" TAPCON OR #14 X 1-3/4" WS
1.25" MIN. EMBEDMENT INTO WOOD SILL (SG-.42)
E.D.=EDGE DISTANCE
2.5" MIN. EMBEDMENT INTO CONCRETE SILL (3 KSI MIN.)

NOTES:
1.(*)WOOD OR (*)STEEL STRUCTURAL MEMBERS OF WOOD AND STEEL-STUD WALLS MUST BE DESIGNED TO CARRY AT LEAST 312 #/FT. LOAD FOR ASSEMBLIES RATED @75 PSF, AND 416#/FT. FOR ASSEMBLIES RATED @100 PSF, WHICH SHOULD BE VERIFIED BY THE APPROPRIATE OFFICIAL.
2.NUMBER OF ANCHORS FOR VARIOUS OPENING HEIGHTS IS LIMITED BY MAXIMUM DISTANCE BETWEEN ANCHORS, SHOWN ON THIS SHEET.
3.SEALE ALL JOINTS WHERE FRAME MEETS WALL WITH BUTYL RUBBER OR SILICONE CAULK
4.INSTALL THRESHOLD INTO BEAD OF BUTYL RUBBER OR SILICONE CAULK FULL LENGTH OF SILL



BEND RADIUS	SCHLAGE LOCK COMPANY, LLC 11819 N. PENNSYLVANIA STREET CARMEL, IN 46032			
THIRD ANGLE PROJECTION	TITLE: STEELCRAFT H SERIES SINGLE FLUSH OUTSWING COMMERCIAL STEEL DOORS WITH AND WITHOUT PANIC EXIT DEVICES			
DRAWN YMF	DATE 05/20/07	FRAME ANCHOR DETAILS & INSTALLATION CONDITIONS.		
CHECKED		SIZE FLAT	DWG NO. IRFS07-T	REV B 1-9-20
APPROVED		SCALE: NTS	AUTOCAD	SHEET 4 of 14
ENG. APPVL JPD	10/11/07			

TABLE 3.1 WATER RATED PERIMETER SEAL HARDWARE - ZERO INT'L THRESHOLD 566

ITEM NUMBER	MODEL No./ DESCRIPTION	MFG.
11A	566 THRESHOLD	ZERO INT'L
14	FAS-SEAL SWEEP	STEELCRAFT
15	END CHANNEL	STEELCRAFT
18A	188S DOOR SEAL	ZERO INT'L
20A	139 DOOR SWEEP	ZERO INT'L
20B	328 DOOR SWEEP	ZERO INT'L
21A	475 ADJUSTABLE SEAL	ZERO INT'L
22A	142 RAIN DRIP	ZERO INT'L
22B	11 RAIN DRIP	ZERO INT'L
23	DOOR TOP CAP	STEELCRAFT

ZERO INT'L 566 THRESHOLD GASKETING SYSTEM REQUIREMENTS FOR WATER INFILTRATION - MAXIMUM DESIGN PRESSURE RATING 75PSF - MAXIMUM DOOR SIZE 4'-0" X 8'-0" (SEE ELEVATIONS SHEET 1)

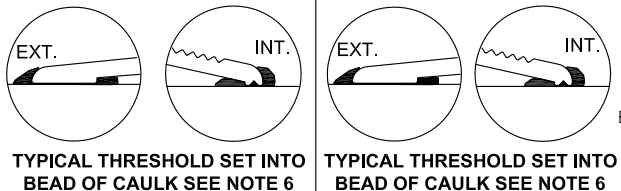
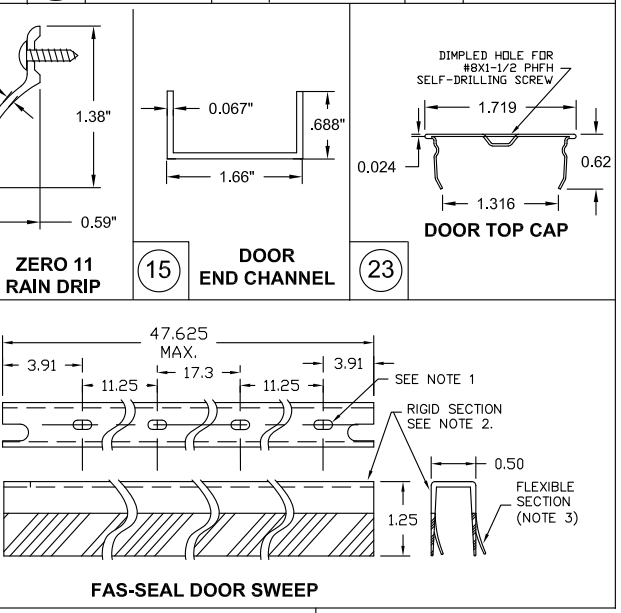
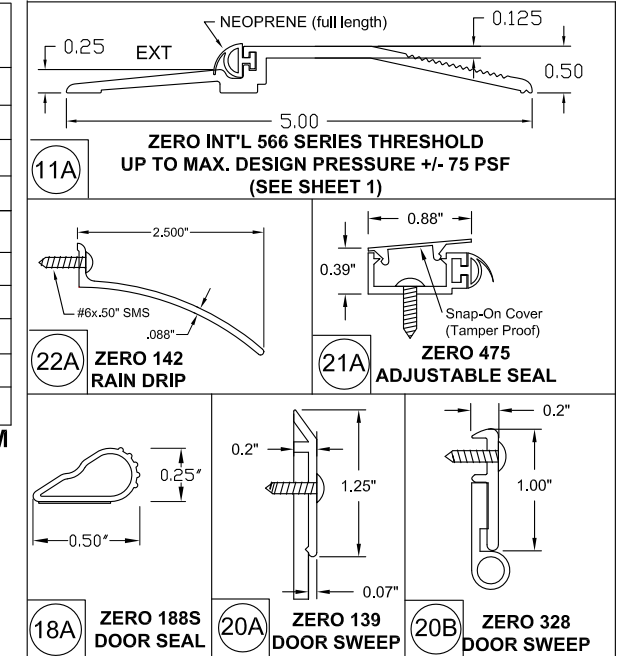
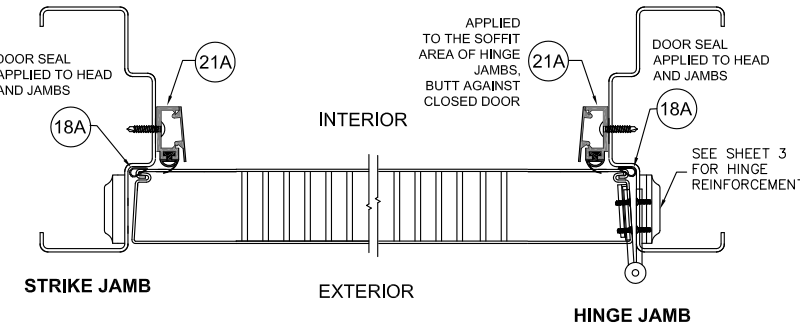
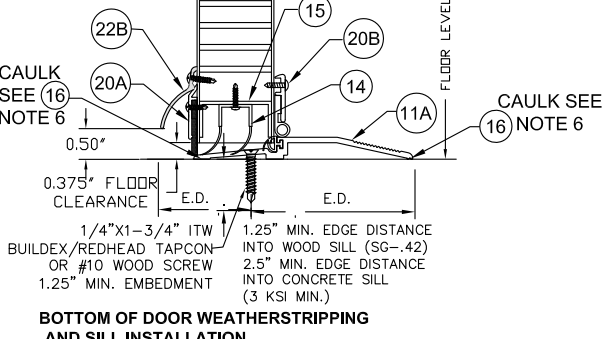
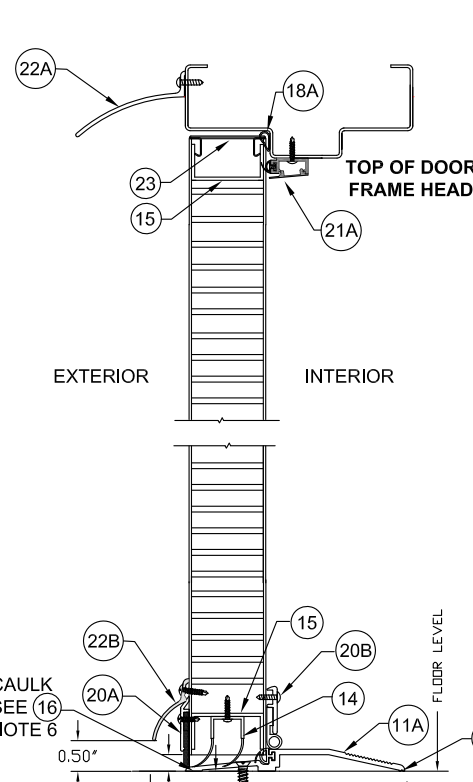
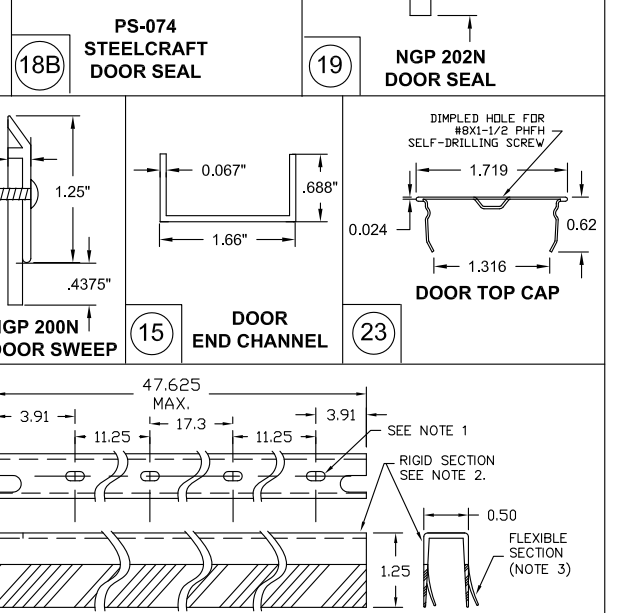
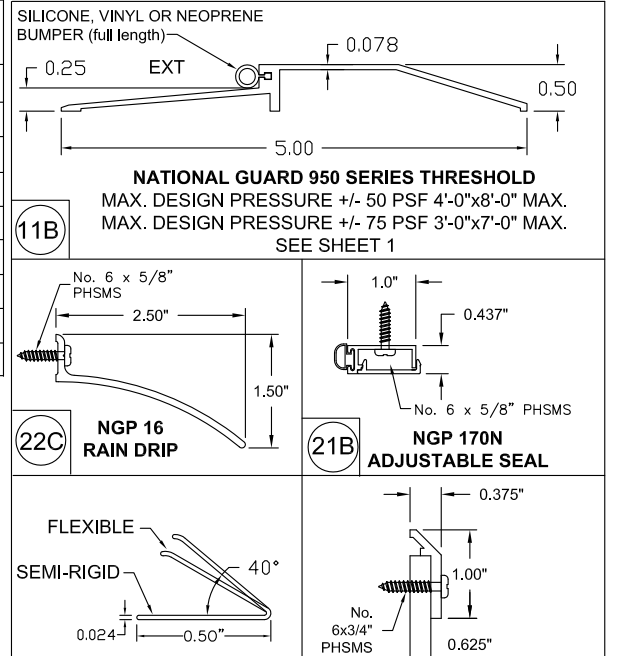
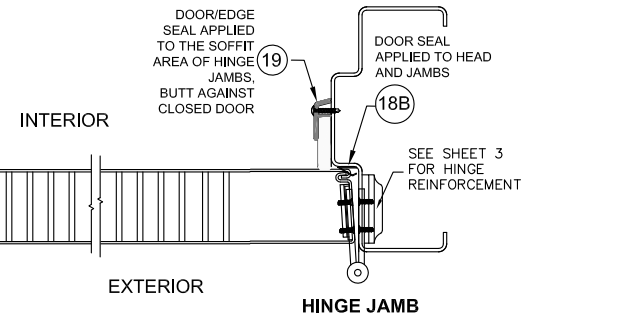
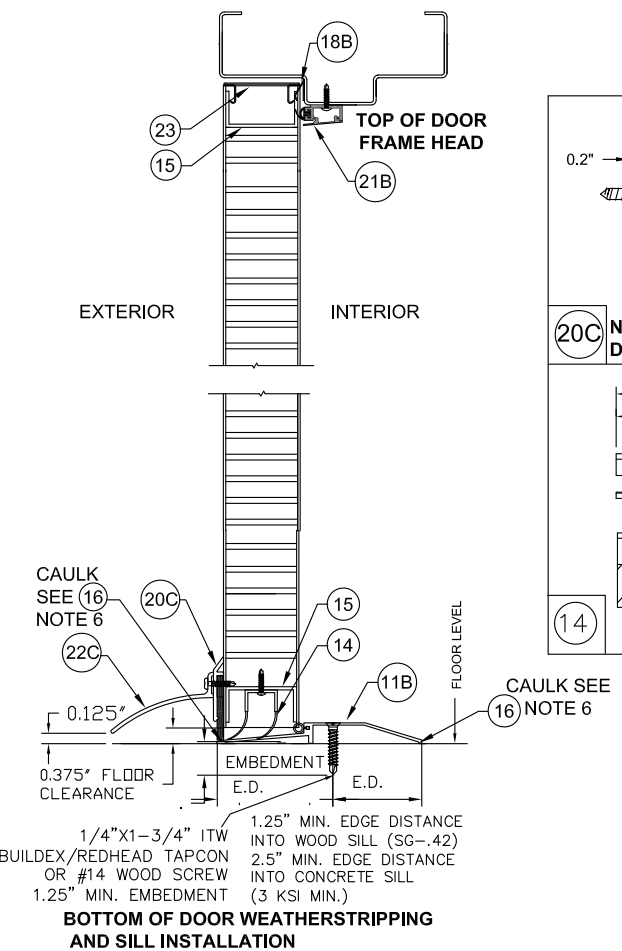


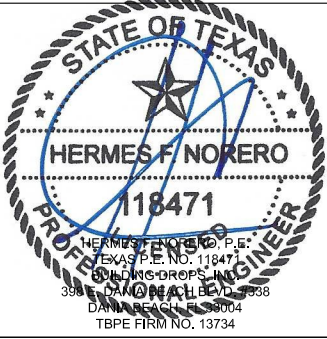
TABLE 3.2 WATER RATED PERIMETER SEAL HARDWARE - NGP THRESHOLD 950

ITEM NUMBER	MODEL No./ DESCRIPTION	MFG.
11B	950 THRESHOLD	NGP
14	FAS-SEAL SWEEP	STEELCRAFT
15	END CHANNEL	STEELCRAFT
18B	PS074 DOOR SEAL	STEELCRAFT
19	202N DOOR SEAL	NGP
20C	200N DOOR SWEEP	NGP
21B	170N ADJUSTABLE SEAL	NGP
22C	16A RAIN DRIP	NGP
23	DOOR TOP CAP	STEELCRAFT

NGP 950 THRESHOLD GASKETING SYSTEM REQUIREMENTS FOR WATER INFILTRATION - MAXIMUM DESIGN PRESSURE RATING 75PSF FOR MAXIMUM DOOR SIZE OF 3'-0" X 7'-0" MAXIMUM DESIGN PRESSURE 50 PSF FOR MAXIMUM DOOR SIZE OF 4'-0" X 8'-0" (SEE ELEVATIONS SHEET 1)



- NOTES:**
1. SLOT LOCATIONS MAY VARY WITH DIFFERENT DOOR WIDTH.
 2. DOOR SWEEP RIGID SECTION IS MADE OF PRO-FAX #PD-199 POLYPROPYLENE HOMOPOLYMER.
 3. DOOR SWEEP FLEXIBLE SECTION IS MADE OF SANTOPRENE #101-73
 4. FAS-SEAL DOOR SWEEP (14), AND THRESHOLD (11A OR 11B) ARE REQUIRED FOR ALL INSTALLATIONS.
 5. SEAL ALL JOINTS WHERE FRAME MEETS WALL WITH BUTYL RUBBER OR SILICONE CAULK
 6. INSTALL THRESHOLD INTO BEAD OF BUTYL RUBBER OR SILICONE CAULK FULL LENGTH OF SILL



BEND RADIUS		SCHLAGE LOCK COMPANY, LLC 11819 N. PENNSYLVANIA STREET CARMEL, IN 46032	
THIRD ANGLE PROJECTION	DATE	TITLE: STEELCRAFT H SERIES SINGLE FLUSH OUTSWING COMMERCIAL STEEL DOORS WITH AND WITHOUT PANIC EXIT DEVICES	
DRAWN YMF	05/20/07	SINGLE FLUSH DOOR PERIMETER SEAL HARDWARE APPROVED WHERE WATER INFILTRATION IS REQUIRED	
CHECKED		SIZE	REV
APPROVED		FLAT	B 1-9-20
ENG. APPVL JPD	10/11/07	DWG NO. IRFS07-T	SHEET 5 of 14
		SCALE: NTS	AUTOCAD

TABLE 4.1 NON WATER RATED PERIMETER SEAL HARDWARE - ZERO INT'L THRESHOLDS

ITEM NUMBER	MODEL No./ DESCRIPTION	MFG.
11	11A 566 THRESHOLD	ZERO INT'L
	11C 65 THRESHOLD	ZERO INT'L
	11D 568 THRESHOLD	ZERO INT'L
13	13A PS074 DOOR SEAL	STEELCRAFT
	13B 188S DOOR SEAL	ZERO INT'L
	13C 117S DOOR SEAL	ZERO INT'L
	13D 8144S DOOR SEAL	ZERO INT'L
14	FAS-SEAL SWEEP	STEELCRAFT
15	END CHANNEL	STEELCRAFT

ZERO INT'L 566 AND 568 THRESHOLD GASKETING SYSTEM REQUIREMENTS WHEN WATER INFILTRATION IS NOT REQUIRED
MAXIMUM DESIGN PRESSURE RATING 75 PSF -
ZERO INT'L 65 THRESHOLD GASKETING SYSTEM REQUIREMENTS WHEN WATER INFILTRATION IS NOT REQUIRED
MAXIMUM DESIGN PRESSURE RATING 70 PSF
MAXIMUM DOOR SIZE 4'-0" X 8'-0"
(SEE ELEVATIONS SHEET 1)

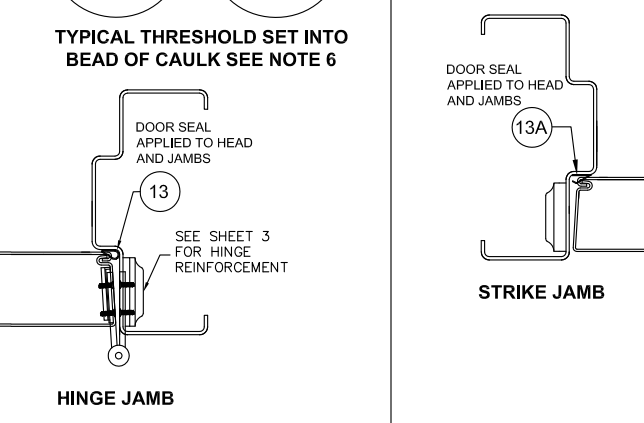
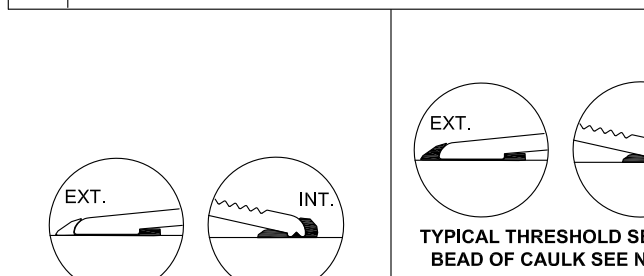
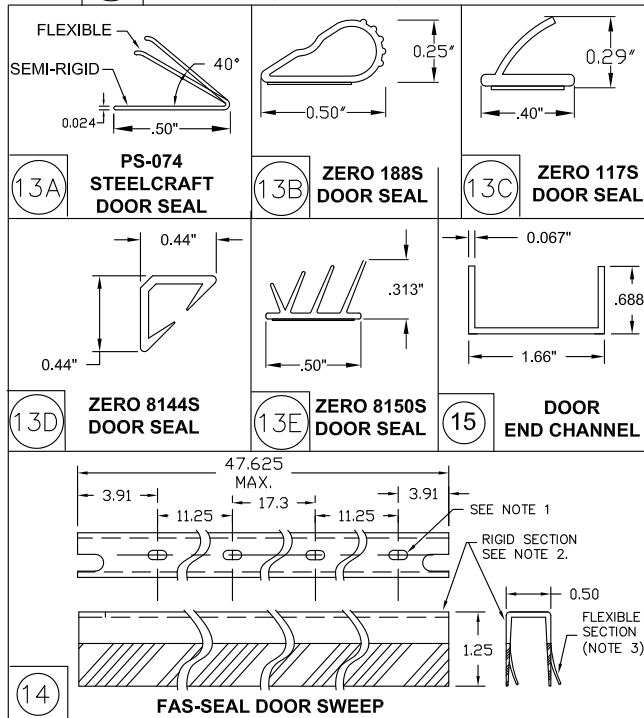
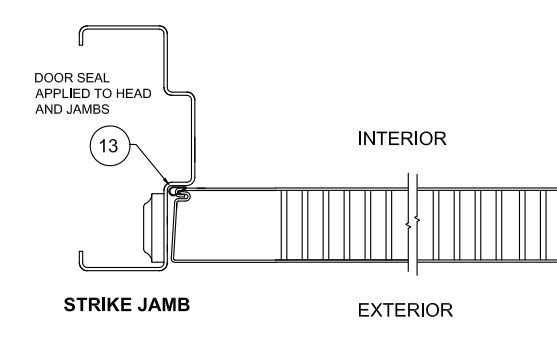
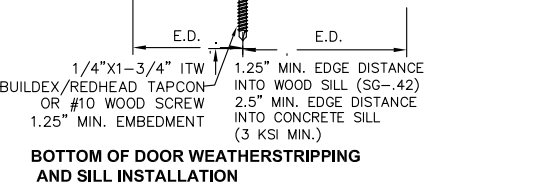
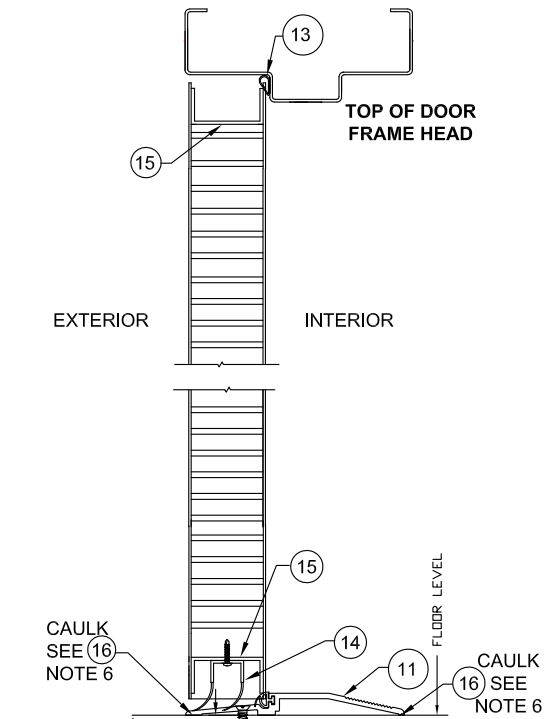
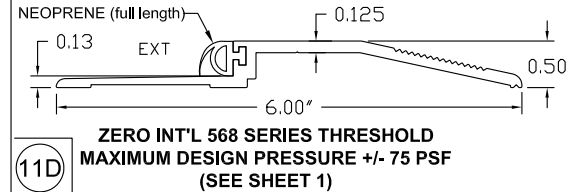
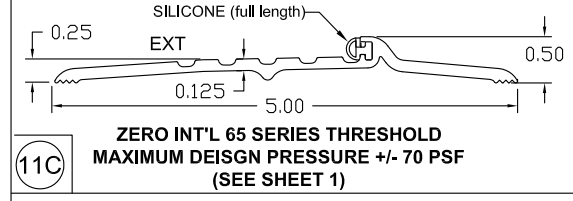
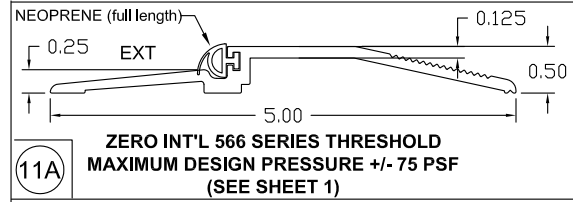
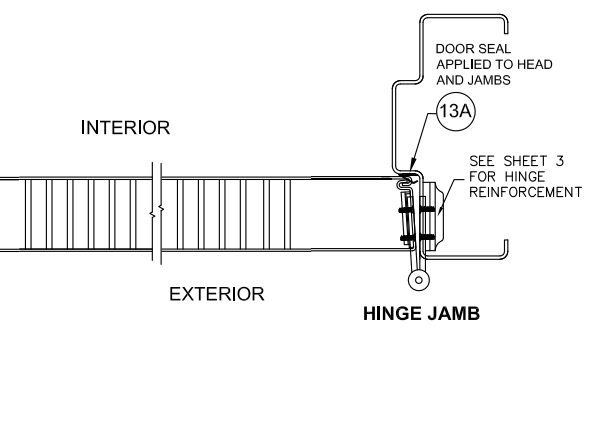
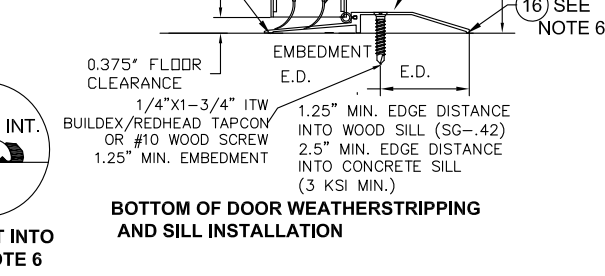
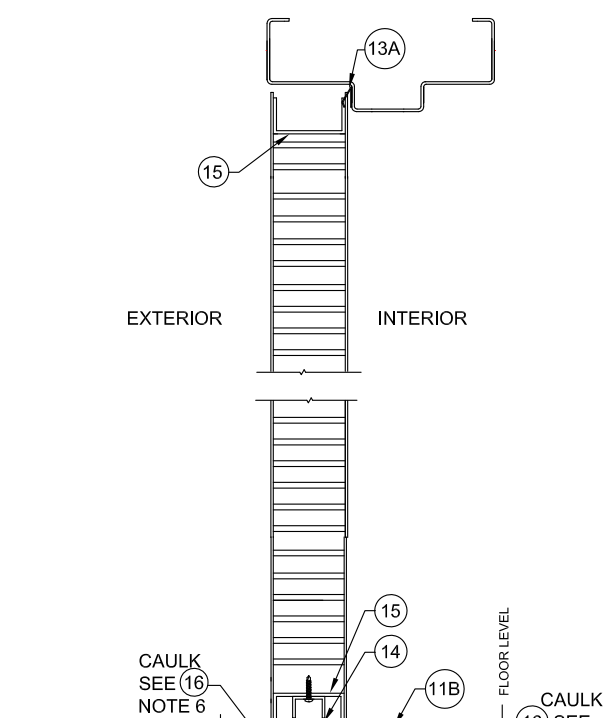
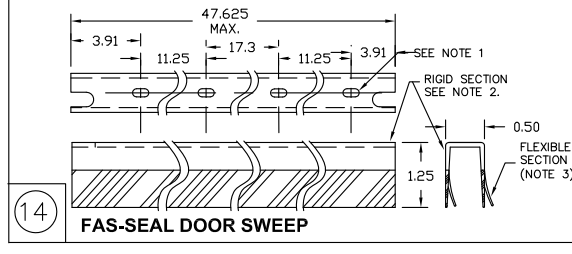
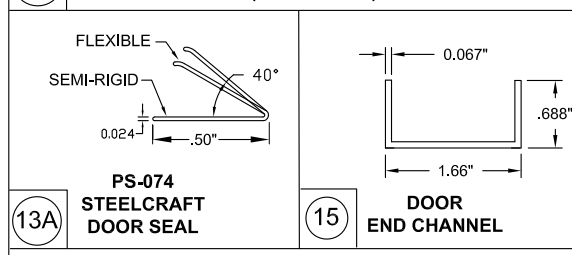
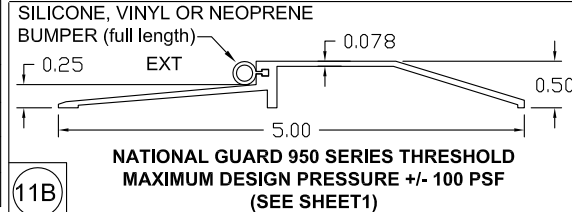


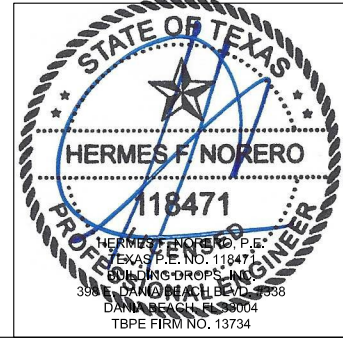
TABLE 4.2 NON WATER RATED PERIMETER SEAL HARDWARE - NGP THRESHOLD 950

ITEM NUMBER	MODEL No./ DESCRIPTION	MFG.
11B	950 THRESHOLD	NGP
13A	PS074 DOOR SEAL	STEELCRAFT
14	FAS-SEAL SWEEP	STEELCRAFT
15	END CHANNEL	STEELCRAFT

NGP 950 THRESHOLD GASKETING SYSTEM REQUIREMENTS WHEN WATER INFILTRATION IS NOT REQUIRED -
MAXIMUM DESIGN PRESSURE 100 PSF FOR
MAXIMUM DOOR SIZE OF 4'-0" X 8'-0"
(SEE ELEVATIONS SHEET 1)



- NOTES:**
1. SLOT LOCATIONS MAY VARY WITH DIFFERENT DOOR WIDTH.
 2. DOOR SWEEP RIGID SECTION IS MADE OF PRO-FAX #PD-199 POLYPROPYLENE HOMOPOLYMER.
 3. DOOR SWEEP FLEXIBLE SECTION IS MADE OF SANTOPRENE #101-73
 4. FAS-SEAL DOOR SWEEP (14), DOOR SEAL (13A, 13B, 13C, 13D, 13E) AND THRESHOLD (11A, 11B, 11C, 11D) AS APPLICABLE, ARE REQUIRED FOR ALL INSTALLATIONS.
 5. SEAL ALL JOINTS WHERE FRAME MEETS WALL WITH BUTYL RUBBER OR SILICONE CAULK
 6. INSTALL THRESHOLD INTO BEAD OF BUTYL RUBBER OR SILICONE CAULK FULL LENGTH OF SILL



BEND RADIUS		SCHLAGE LOCK COMPANY, LLC 11819 N. PENNSYLVANIA STREET CARMEL, IN 46032	
THIRD ANGLE PROJECTION		TITLE: STEELCRAFT H SERIES SINGLE FLUSH OUTSWING COMMERCIAL STEEL DOORS WITH AND WITHOUT PANIC EXIT DEVICES	
DRAWN YMF	DATE 05/20/07	SINGLE FLUSH DOOR PERIMETER SEAL HARDWARE APPROVED WHERE WATER INFILTRATION IS NOT REQUIRED	
APPROVED		SIZE FLAT	DWG NO. IRFS07-T
ENG. APPVL JPD	10/11/07	SCALE: NTS	REV B 1-9-20
		AUTOCAD	SHEET 6 of 14

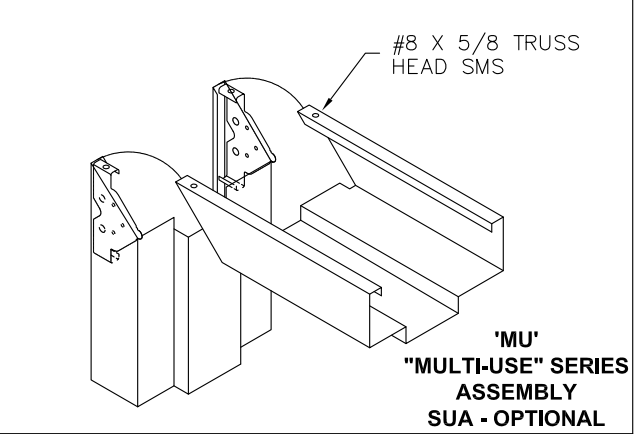
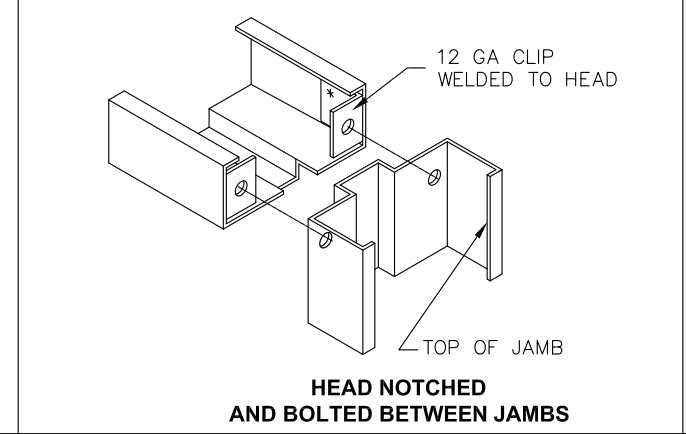
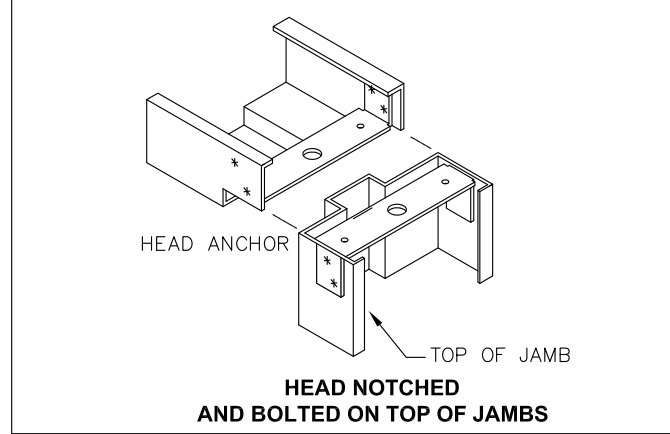
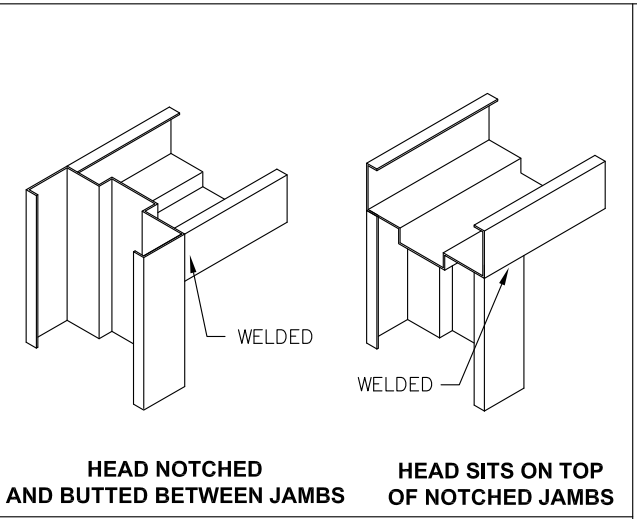
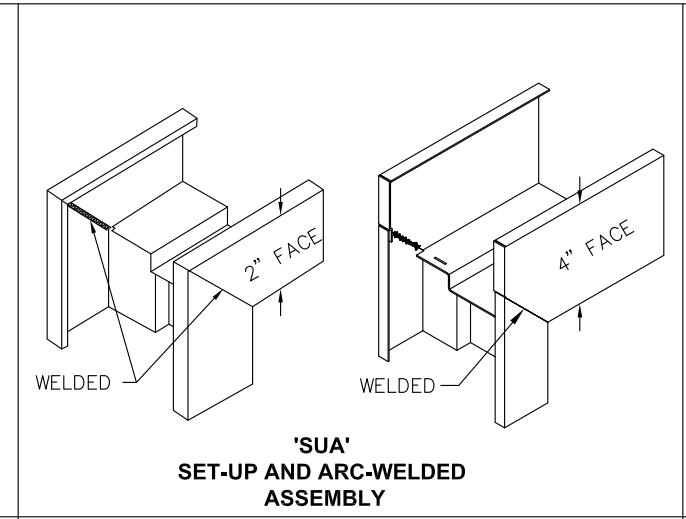
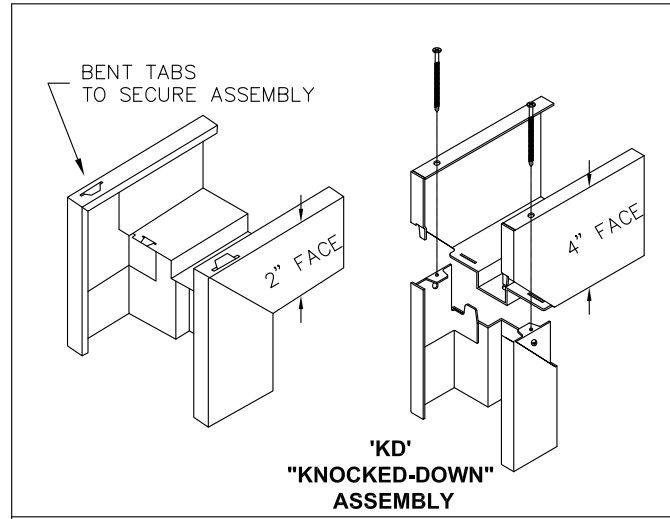


TABLE 5. AVAILABLE STEELCRAFT DOOR CONFIGURATIONS

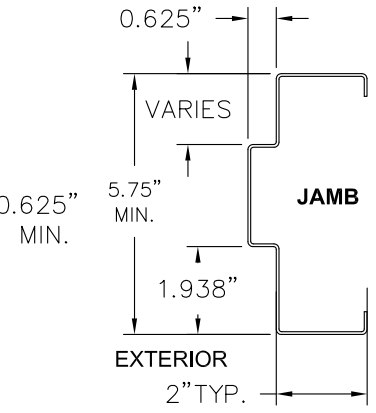
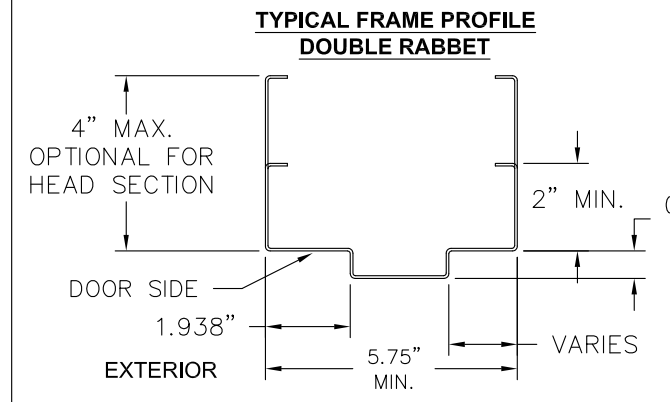
CORE MATERIAL PER SHT.13	MAXIMUM OPENING SIZE		SKIN MATERIAL	
	WIDTH	HEIGHT	DESCR.	GA./MIN. THK
HONEYCOMB POLYSTYRENE POLYURETHANE (POLYISOCYANURATE) TEMPERATURE RISE STEEL STIFFENED	VARIES SEE SHEET 2 TABLE 1		CRS GALV	16/.053" 14/.067"
HONEYCOMB POLYSTYRENE POLYURETHANE	VARIES SEE SHEET 2 TABLE 1		STAINLESS STEEL	16/.053"

TABLE 6. AVAILABLE STEELCRAFT FRAME CONFIGURATIONS

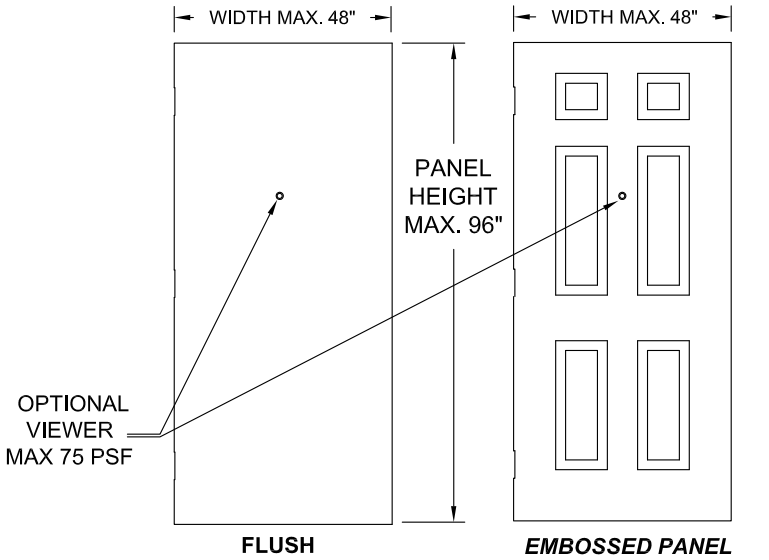
FRAME SERIES	JAMB DEPTH	MAX. OPENING SIZE		MATERIAL	
		WIDTH	HEIGHT	DESCR.	GA./MIN. THK
F	5.75" MIN.	VARIES SEE SHEET 2 TABLE 1		CRS/HRS GALV	16/.053" 14/.067" 12/.099"
				STAINLESS STEEL	16/.053"
MU	5.75" MIN.	VARIES SEE SHEET 2 TABLE 1		CRS/HRS GALV	16/.053" 14/.067"

TABLE 7. STEEL DOOR/FRAME MECHANICAL PROPERTIES

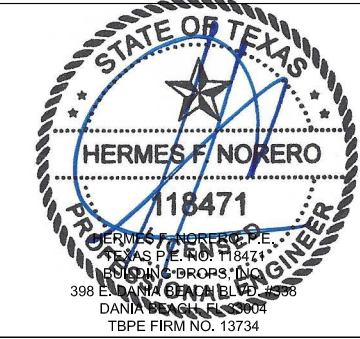
MATERIAL	ASTM REF.	YIELD KSi	TENSILE KSi
CRS	A366	MIN. 30.1	MIN. 44.7
HRS	A1011		
GALV: A60	A924	MIN. 31.2	MIN. 73.2
SS: 304,316	A240		



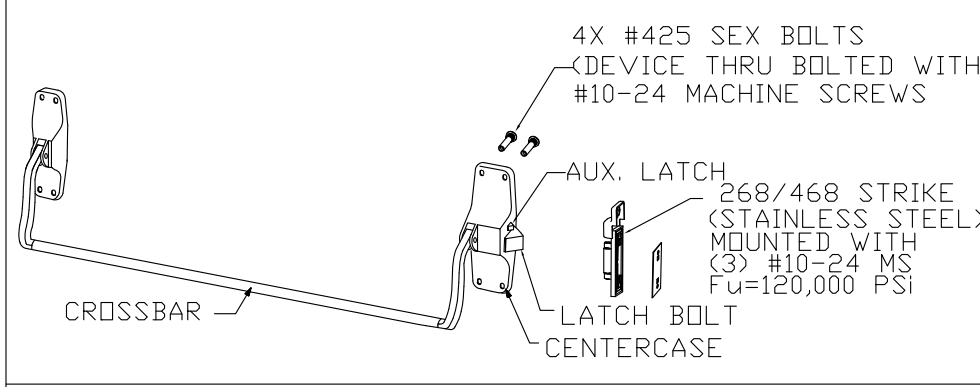
AVAILABLE DOOR PANEL CONFIGURATIONS



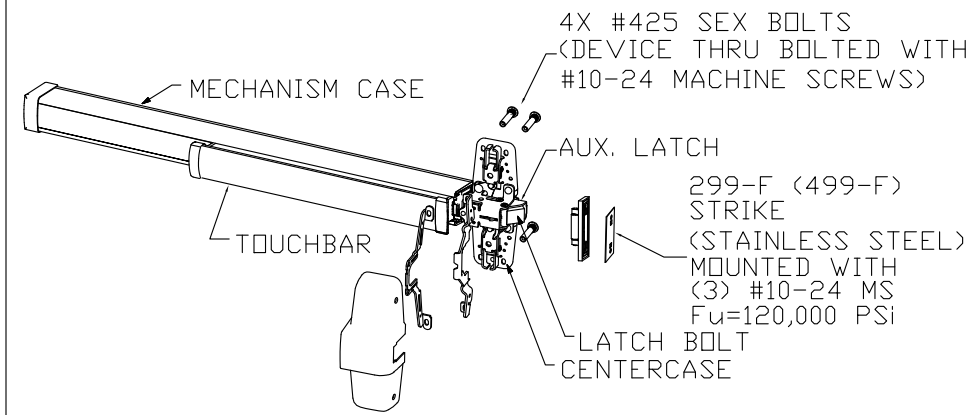
- NOTES:**
- DOOR CONSTRUCTION
 - MINIMUM DOOR THICKNESS - 1 3/4"
 - DOOR SIZE MAY VARY, SUBJECT TO COMPLIANCE WITH FLORIDA BUILDING CODE AND PRODUCT(DOOR, FRAME AND HARDWARE) AVAILABILITY FROM MANUFACTURER (SEE SHEET 2 FOR AVAILABLE HARDWARE)
 - DOOR VIEWERS ARE PERMITTED TO BE USED IN DOOR WITH A DESIGN PRESSURE OF +/-75PSF OR LESS. MAXIMUM 9/16" DIAMETER HOLE THROUGH DOOR FOR VIEWER INSTALLATION.
 - FRAME CONSTRUCTION
 - MINIMUM JAMB DEPTH - 5-3/4", STOP HEIGHT - 5/8"
 - FRAMES AVAILABLE AS FLUSH (F-SERIES) AND MULTI-USE (MU-SERIES) (SEE TABLE 6)
 - FOR DOOR/FRAME MATERIAL SPECIFICATIONS REFERENCE SEE TABLE 7.



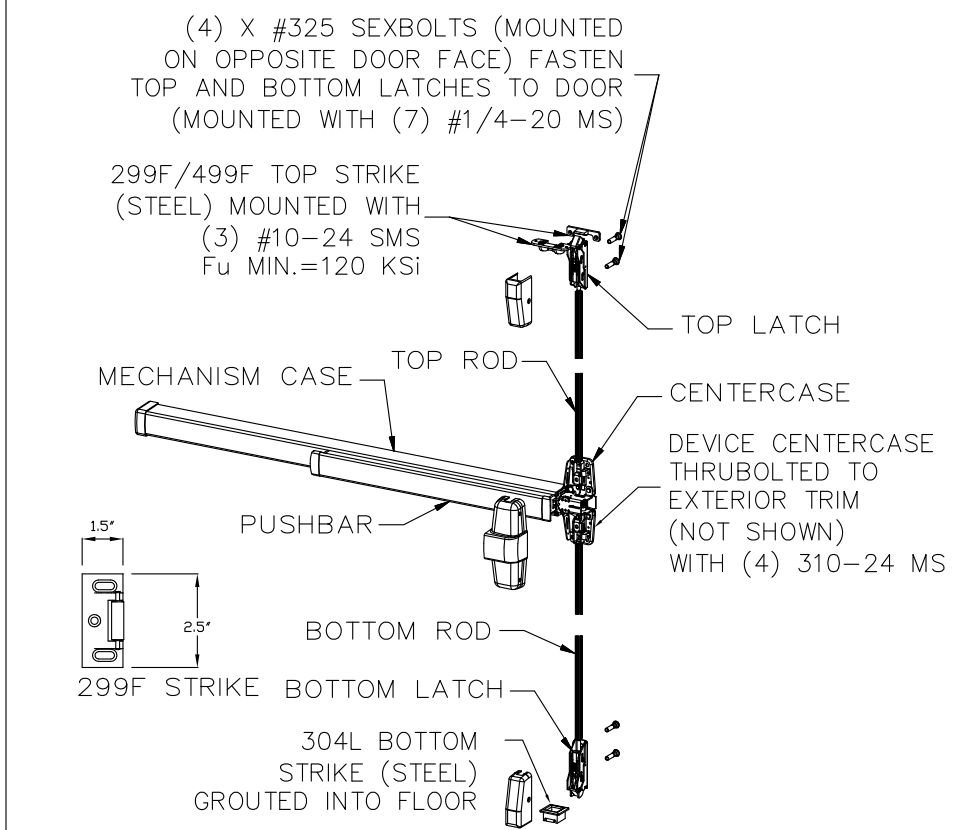
BEND RADIUS		SCHLAGE LOCK COMPANY, LLC 11819 N. PENNSYLVANIA STREET CARMEL, IN 46032			
THIRD ANGLE PROJECTION		TITLE STEELCRAFT H SERIES SINGLE FLUSH OUTSWING COMMERCIAL STEEL DOORS WITH AND WITHOUT PANIC EXIT DEVICES			
DRAWN YMF	DATE 05/20/07	FRAME PROFILE, CORNER DETAILS AND DOOR FRAME MATERIAL, AND SIZE OPTIONS			
CHECKED		SIZE FLAT	DWG NO. IRFS07-T	REV B	1-9-20
APPROVED		SCALE: NTS	AUTOCAD	SHEET	7 of 14
ENG. APPVL JPD	10/11/07				



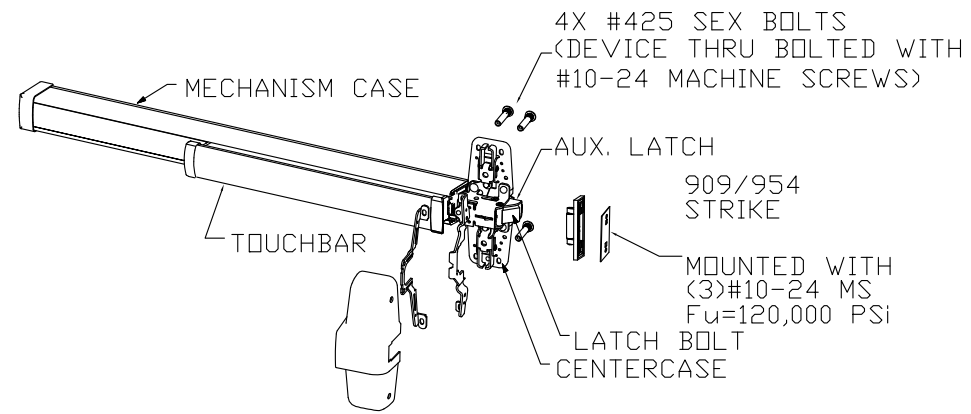
RIM EXIT DEVICE VON DUPRIN 88-F
USED IN DOOR CONFIGURATION 8 (SEE SHT.1)



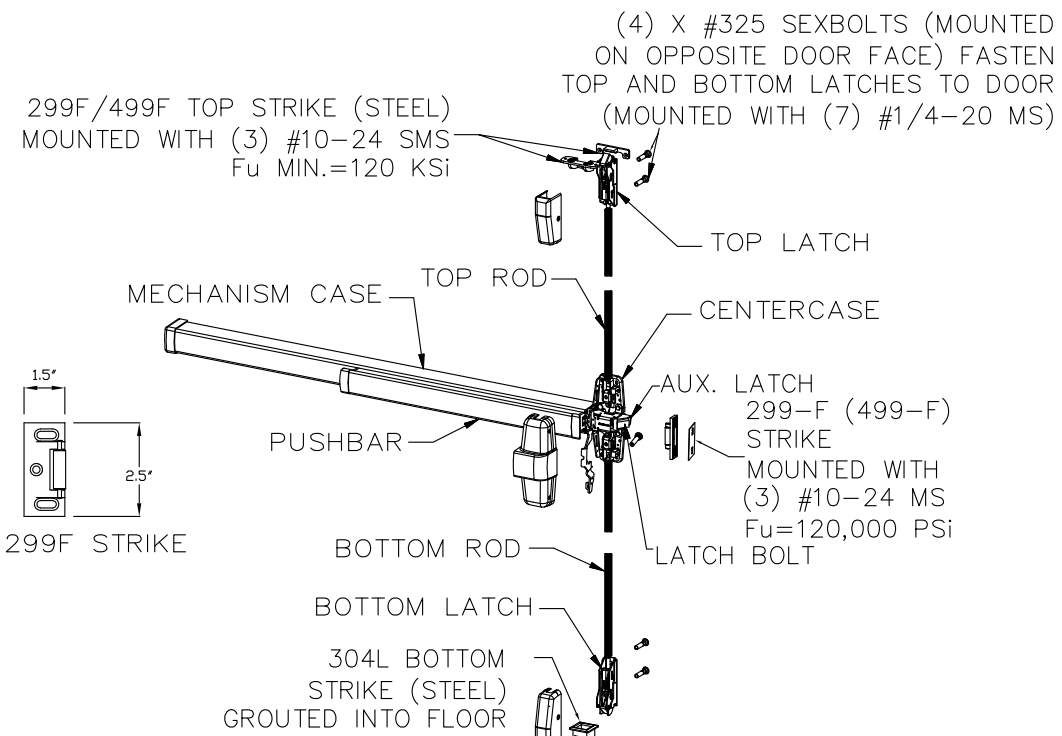
RIM EXIT DEVICE VON DUPRIN 98/99 & 98/99-F
USED IN DOOR CONFIGURATION 8 (SEE SHT.1)



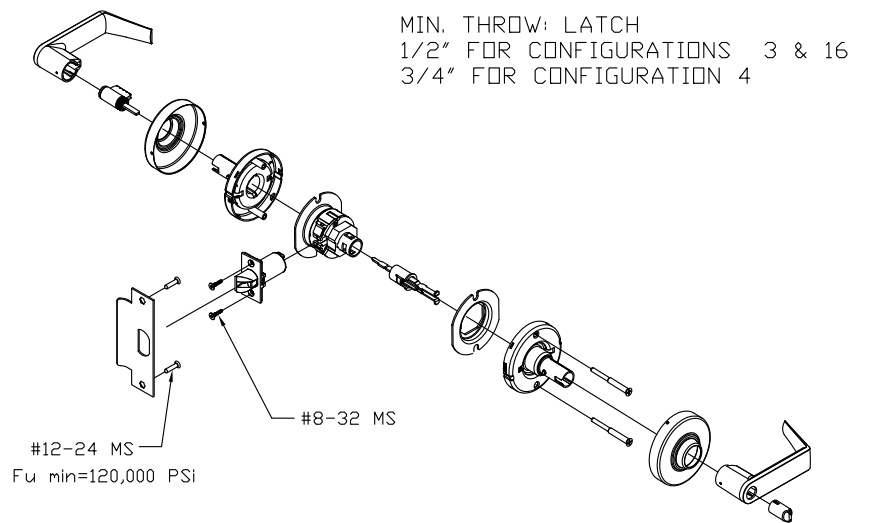
SURFACE VERTICAL ROD EXIT DEVICE VON DUPRIN 98/9927 & 98/9927-F
USED IN DOOR CONFIGURATION 5 (SEE SHT.1)



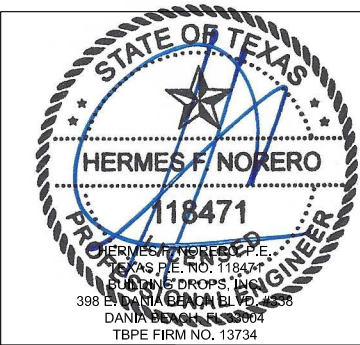
RIM EXIT DEVICE VON DUPRIN XP98/99 & XP98/99-F
USED IN DOOR CONFIGURATION 9 (SEE SHT.1)



THREE-POINT EXIT DEVICE VON DUPRIN 98/9957 & 98/9957-F
USED IN DOOR CONFIGURATION 7 (SEE SHT.1)



SCHLAGE D/ND-SERIES CYLINDRICAL LOCKSET
USED IN DOOR CONFIGURATIONS 3, 4 & 16 (SEE SHT.1)

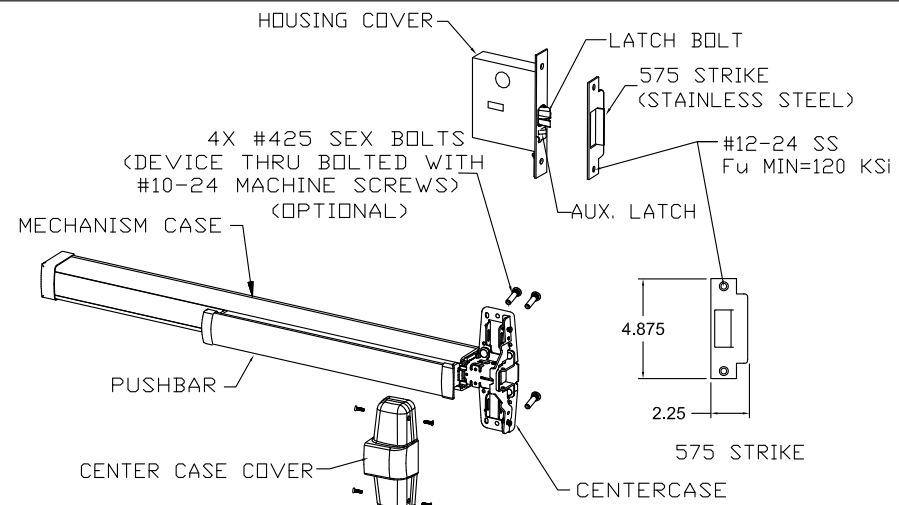


NOTES:
ELECTRIC/ELECTRONIC FUNCTION AND FIRE RATINGS ARE NOT PART OF THIS APPROVAL AND MUST BE REVIEWED BY AUTHORITY HAVING JURISDICTION

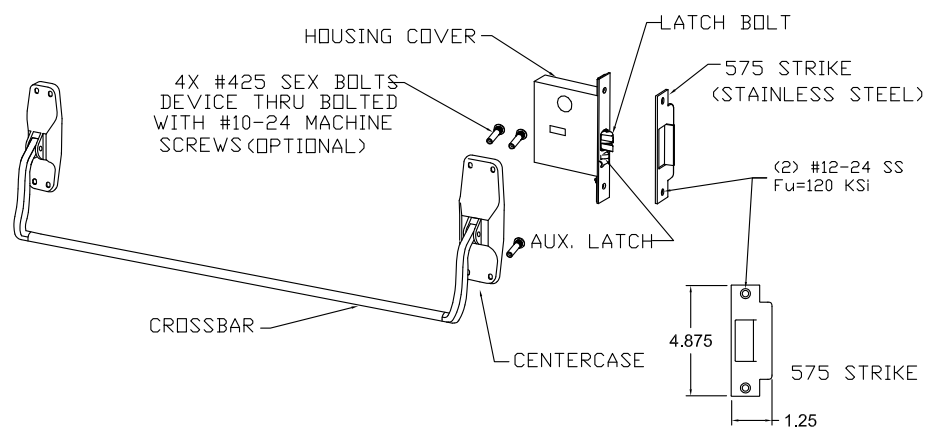
EXIT HARDWARE OPTIONS:
FOR 98/99 SERIES - E, RX, LX, SS, EL, QEL, CX, F, ALK
FOR XP98/99 SERIES - E, RX, LX, QEL, F
TRIMS: ALL APPLICABLE TRIMS AVAILABLE.
PN MODEL OFFERED.

BEND RADIUS	
THIRD ANGLE PROJECTION	
DRAWN	DATE
YMF	05/20/07
CHECKED	CDATE
APPROVED	ADATE
ENG. APPVL	EDATE
JPD	10/11/07

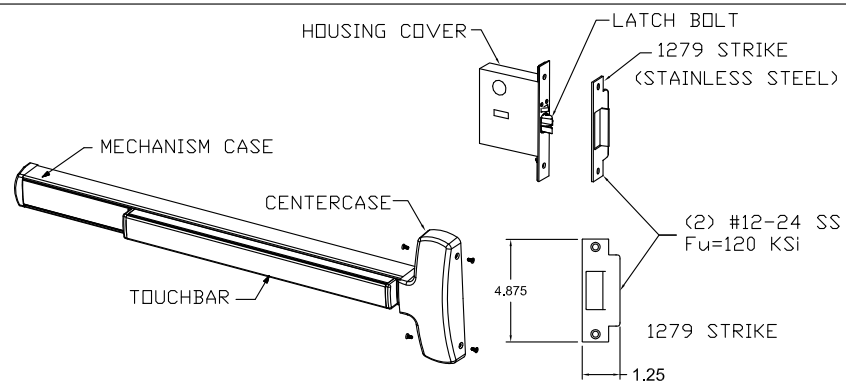
SCHLAGE LOCK COMPANY, LLC 11819 N. PENNSYLVANIA STREET CARMEL, IN 46032			
TITLE: STEELCRAFT H SERIES SINGLE FLUSH OUTSWING COMMERCIAL STEEL DOORS WITH AND WITHOUT PANIC EXIT DEVICES			
EXIT HARDWARE OPTIONS FOR FLUSH SINGLE DOORS			
SIZE	FLAT	DWG NO.	REV
		IRFS07-T	B 1-9-20
SCALE:	NTS	AUTOCAD	SHEET
			8 of 14



**MORTISE EXIT DEVICE VON DUPRIN 98/9975 & 9975-F
USED IN DOOR CONFIGURATION 10 (SEE SHT.1)**

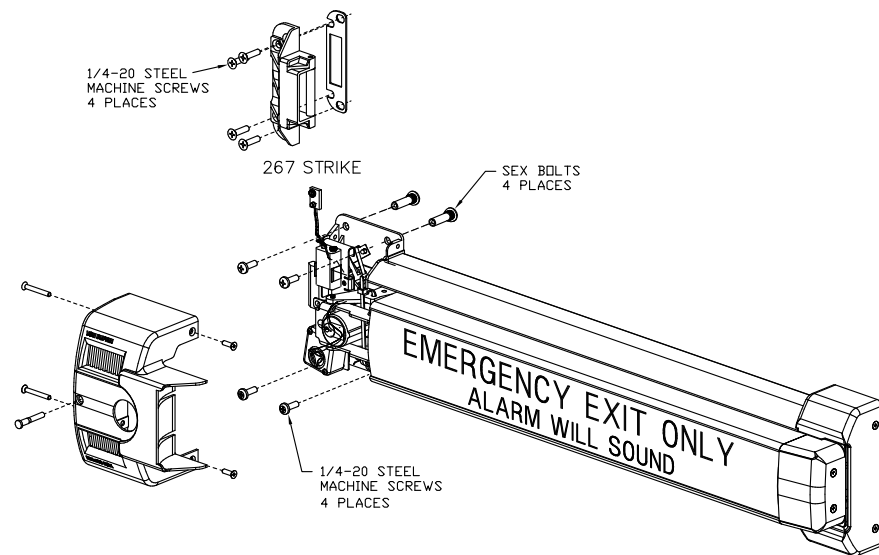


**MORTISE EXIT DEVICE VON DUPRIN 8875 & 8875-F
USED IN DOOR CONFIGURATION 10 (SEE SHT.1)**

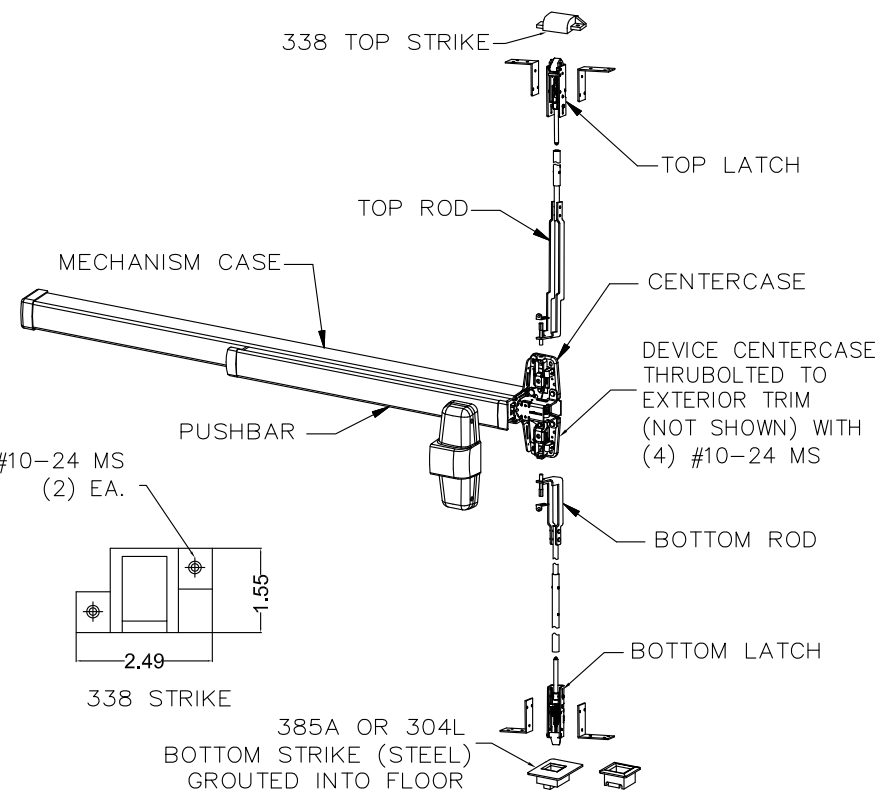


**MORTISE EXIT DEVICE FALCON F-25-M & 25-M
USED IN DOOR CONFIGURATION 10 (SEE SHT.1)**

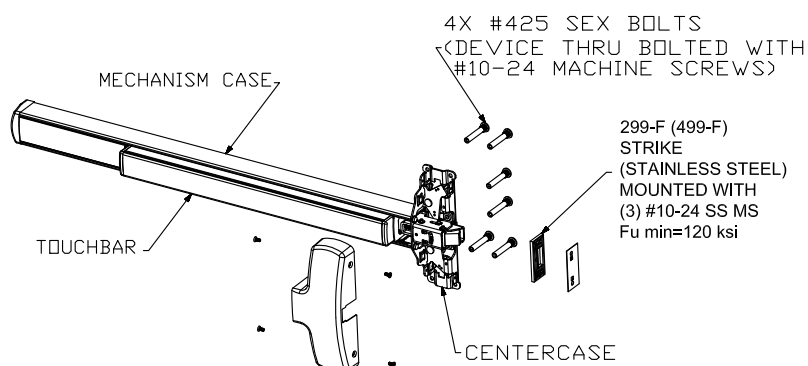
NOTES:
 1. ELECTRICAL FUNCTIONS/INSTALLATION AND FIRE RATINGS ARE NOT PART OF THIS APPROVAL AND TO BE REVIEWED BY BUILDING OFFICIAL.
 2. EXIT HARDWARE OPTIONS:
 FOR 98/99 SERIES - E, RX, LX, SS, EL, QEL, CX, F ALK
 FOR XP98/99 SERIES - E, RX, LX, QEL, F
 TRIMS: ALL APPLICABLE TRIMS AVAILABLE.
 FOR 88-F SERIES RIM - FUNCTION E
 TRIMS: ALL APPLICABLE TRIMS AVAILABLE. PN MODEL OFFERED.
 FOR 2670 GUARD-X
 TRIMS: ALL APPLICABLE TRIMS AVAILABLE.
 FOR FALCON (F)25-R, (F)25-M, F-25-C & (F)25-V SERIES - FUNCTIONS AE, DM, LM, LK, KOR, ED, EL, EA, FSA, FSE, HWEA
 TRIMS: ALL APPLICABLE TRIMS AVAILABLE



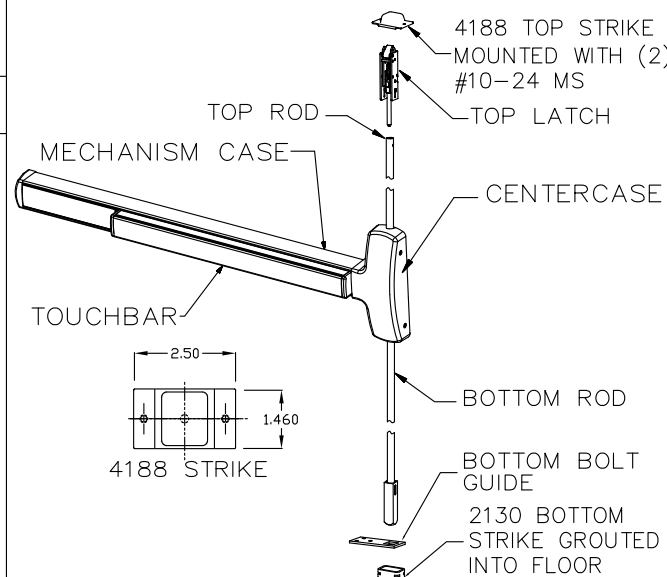
**EXIT ALARM LOCK VON DUPRIN 2670 GUARD-X
USED IN DOOR CONFIGURATION 11 (SEE SHT.1)**



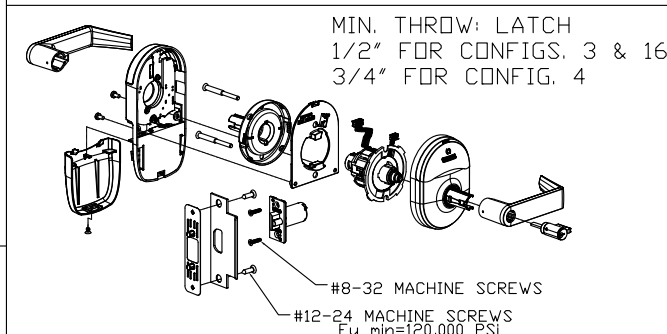
**CONCEALED VERTICAL ROD EXIT DEVICE VON DUPRIN 98/9947-F
& HH98/9947 WITH 2-3/4" BACKSET
USED IN DOOR CONFIGURATION 6 (SEE SHT.1)**



**RIM EXIT DEVICE FALCON F-25-R & 25-R
USED IN DOOR CONFIGURATION 13 (SEE SHT.1)**



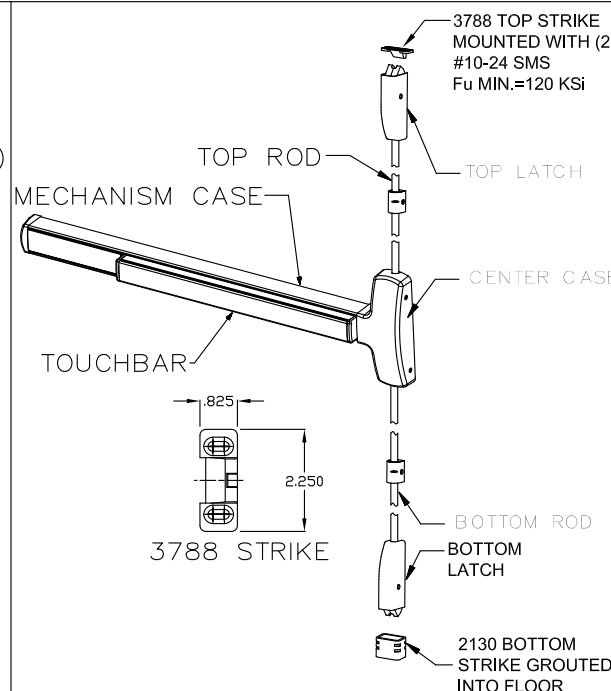
**CONCEALED VERTICAL ROD EXIT DEVICE FALCON F-25-C
USED IN DOOR CONFIGURATION 6 (SEE SHT.1)**



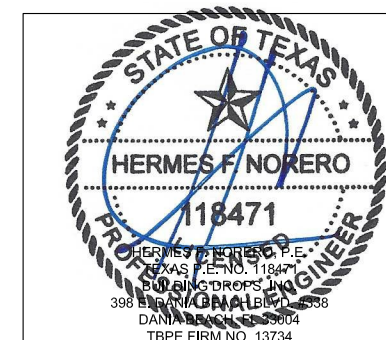
**SCHLAGE NDE & NDEB SERIES CYLINDRICAL LOCKSET
USED IN DOOR CONFIGURATIONS: 3, 4 & 16 (SEE SHT.1)**

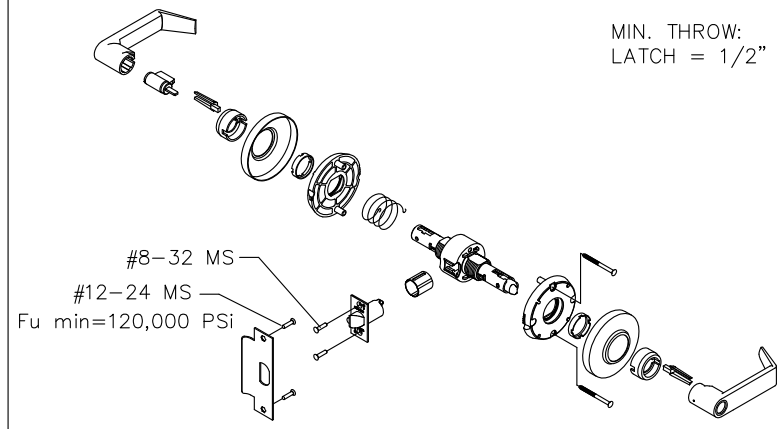
BEND RADIUS	
THIRD ANGLE PROJECTION	
DRAWN YMF	DATE 05/20/07
CHECKED	
APPROVED	
ENG. APPVL JPD	10/11/07

SCHLAGE LOCK COMPANY, LLC 11819 N. PENNSYLVANIA STREET CARMEL, IN 46032			
TITLE: STEELCRAFT H SERIES SINGLE FLUSH OUTSWING COMMERCIAL STEEL DOORS WITH AND WITHOUT PANIC EXIT DEVICES			
HARDWARE OPTIONS FOR FLUSH SINGLE DOORS			
SIZE	FLAT	DWG NO.	REV
		IRFS07-T	B 1-9-20
SCALE:	NTS	AUTOCAD	SHEET 9 of 14

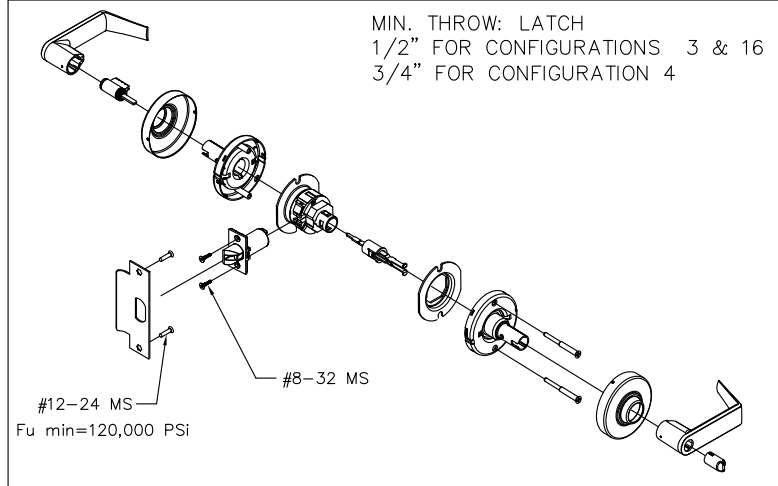


**SURFACE VERTICAL ROD EXIT DEVICE
FALCON F-25-V & 25-V
USED IN DOOR CONFIGURATION 5 (SEE SHT.1)**

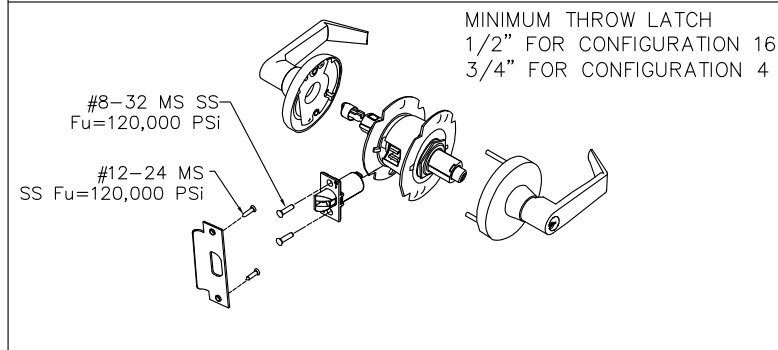




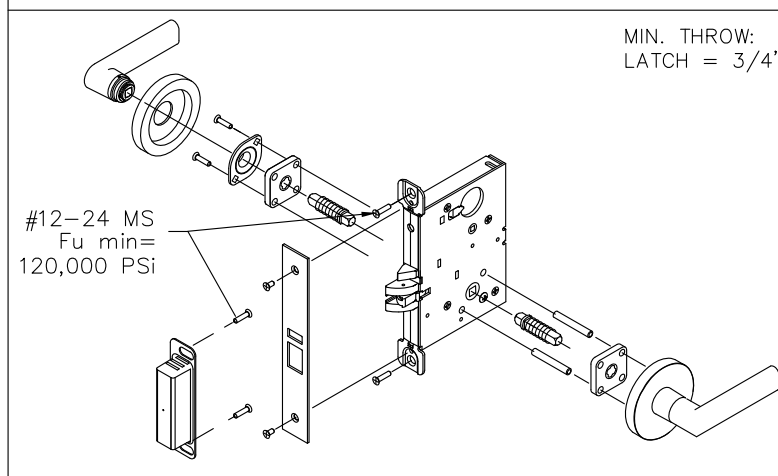
SCHLAGE AL-SERIES CYLINDRICAL LOCKSET WITH 1/2" THROW LATCH USED IN DOOR CONFIGURATION 2 (SEE SHT.1)



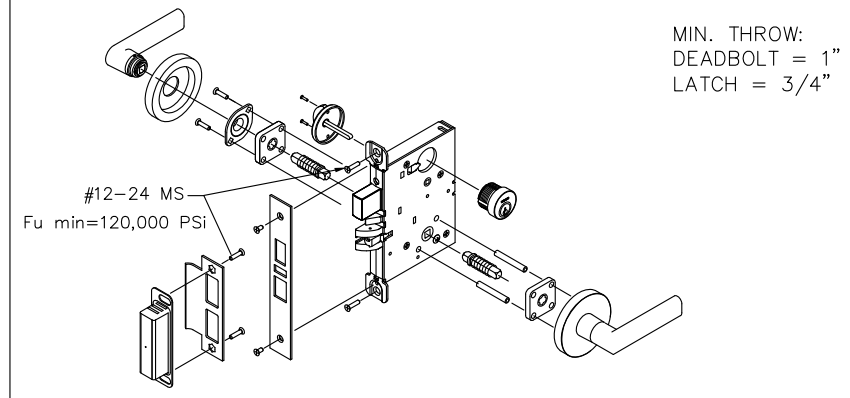
SCHLAGE D/ND-SERIES CYLINDRICAL LOCKSET USED IN DOOR CONFIGURATIONS 3, 4 & 16 (SEE SHT.1)



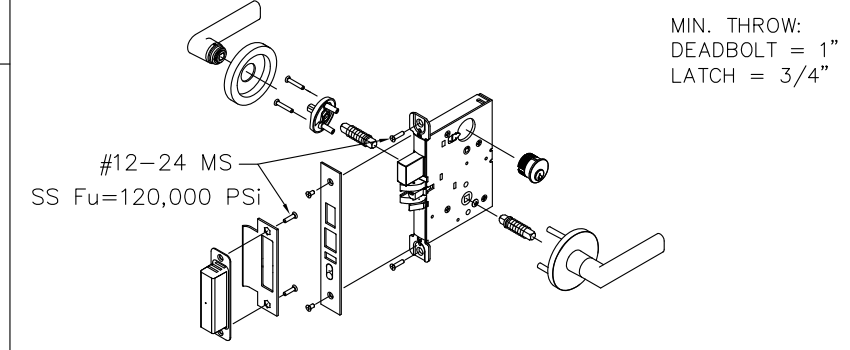
FALCON T-SERIES CYLINDRICAL LOCKSET USED IN DOOR CONFIGURATIONS 4 & 16 (SEE SHT.1)



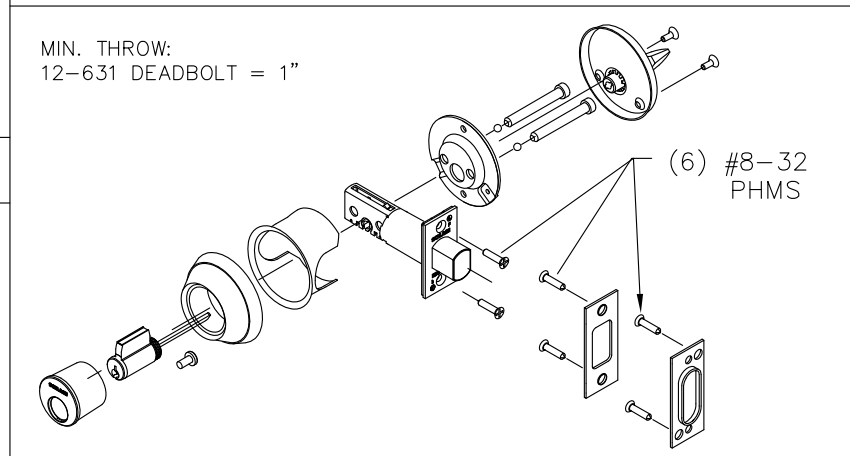
SCHLAGE L/LV 9000 SERIES MORTISE LOCKSET WITHOUT DEADBOLT USED IN DOOR CONFIGURATIONS 14 & 15 (SEE SHT.1)



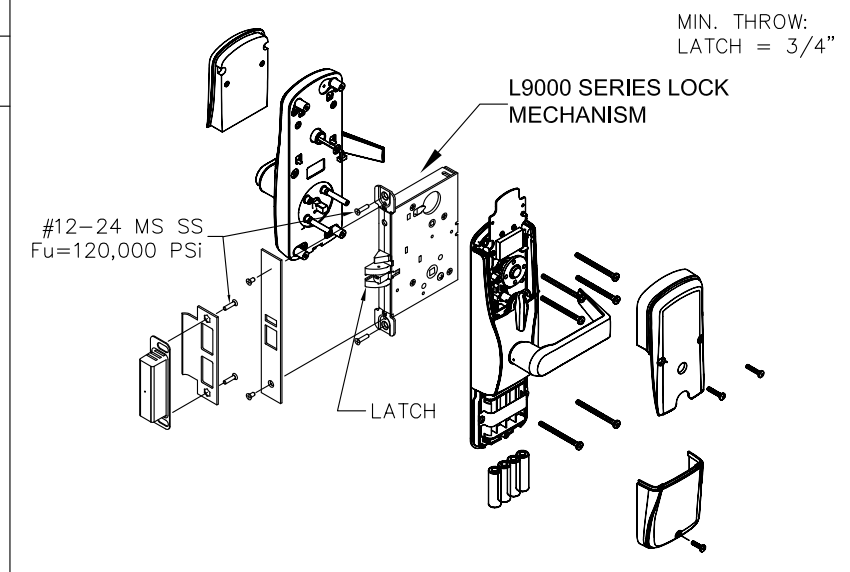
SCHLAGE L/LV 9400 SERIES MORTISE LOCKSET WITH DEADBOLT FUNCTION USED IN DOOR CONFIGURATION 1 (SEE SHT.1)



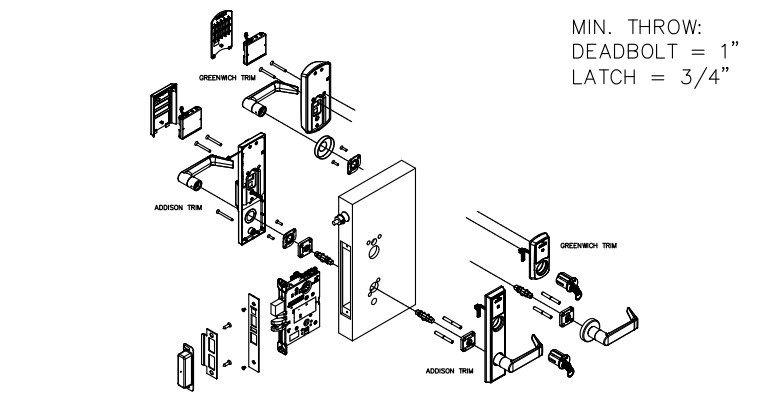
FALCON M/MA-SERIES MORTISE LOCKSET WITH DEADBOLT FUNCTION USED IN DOOR CONFIGURATION 1 (SEE SHT.1)



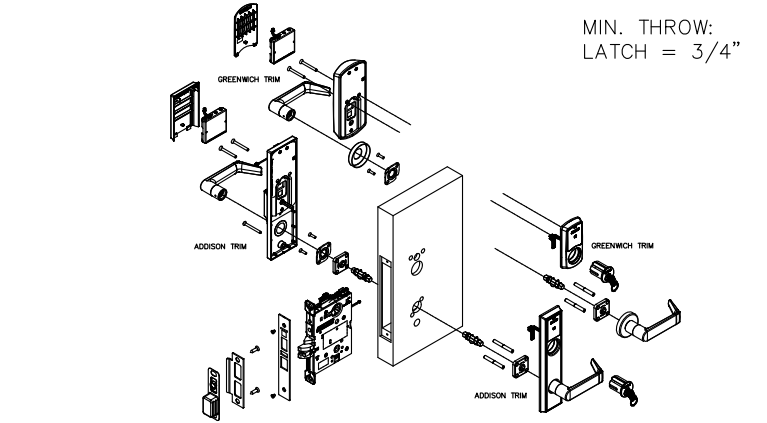
SCHLAGE B600/700/800 CYLINDRICAL DEADLOCK USED IN DOOR CONFIGURATION 12 (SEE SHT.1)



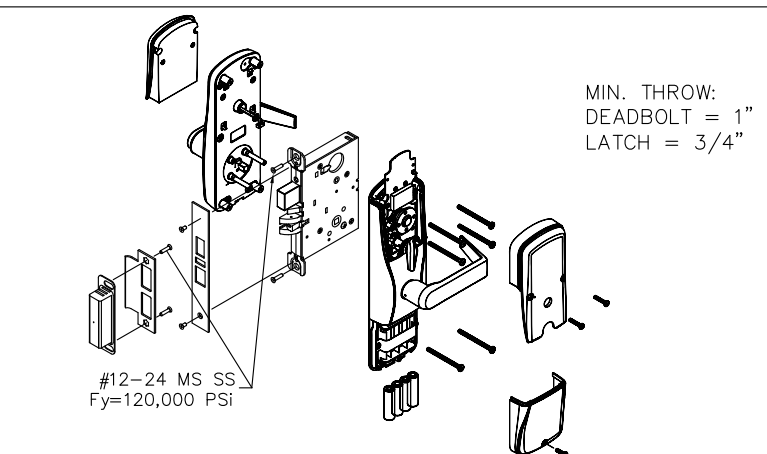
SCHLAGE AD-MS & CO-MS SERIES MORTISE LOCKSET WITHOUT DEADBOLT USED IN DOOR CONFIGURATIONS 14 & 15 (SEE SHT.1)



SCHLAGE LE-MD & LEB-MD SERIES MORTISE LOCKSET WITH DEADBOLT FUNCTION USED IN DOOR CONFIGURATION 1 (SEE SHT.1)

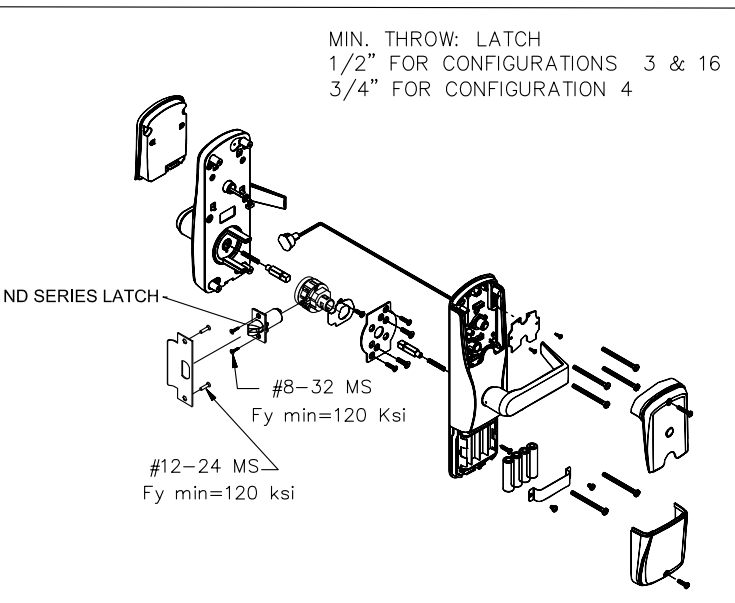


SCHLAGE LE-MS, LEB-MS, LE-MB, LEB-MB SERIES MORTISE LOCKSET W/O DEADBOLT USED IN DOOR CONFIGURATIONS 14 & 15 (SEE SHT.1)

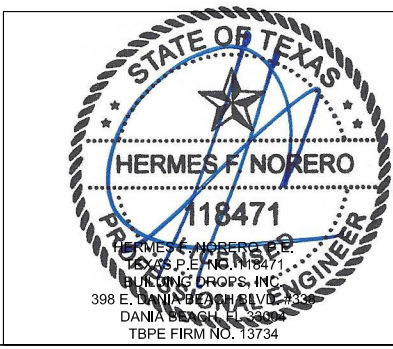


SCHLAGE AD-MD & CO-MD SERIES MORTISE LOCKSET W/ DEADBOLT USED IN DOOR CONFIGURATION 1 (SEE SHT.1)

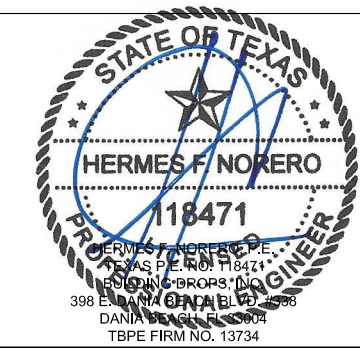
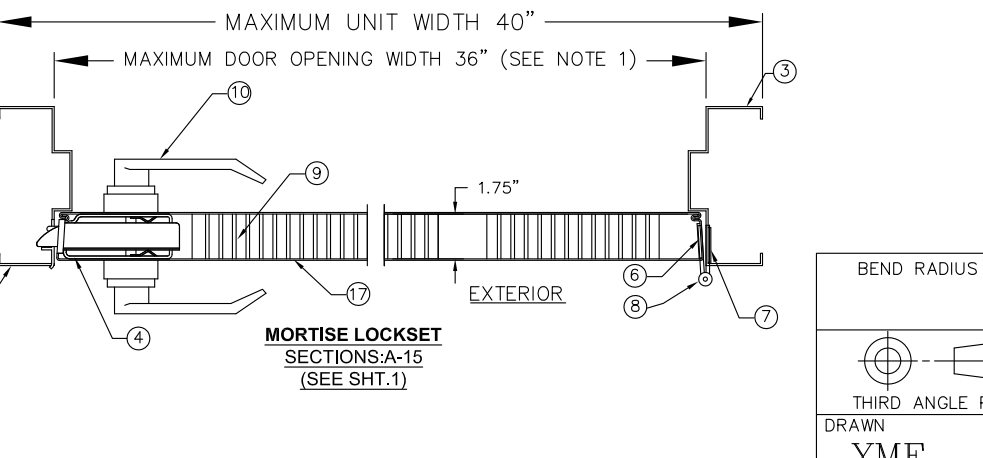
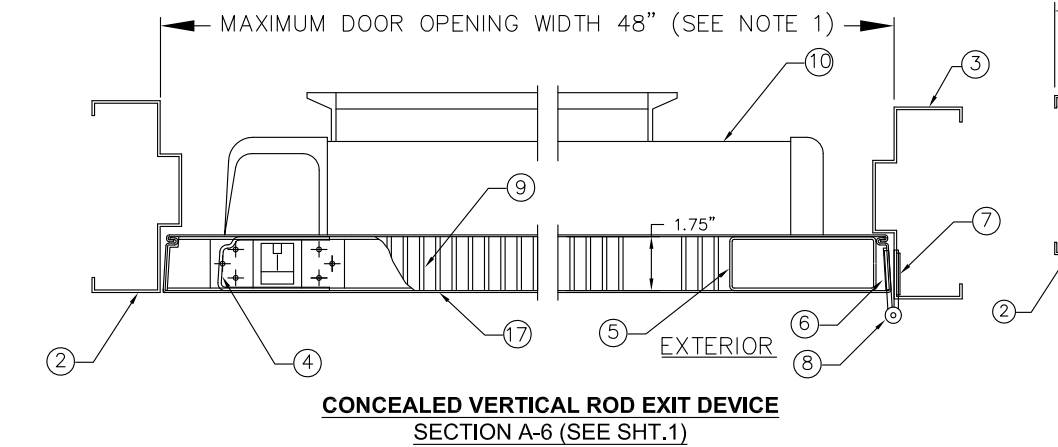
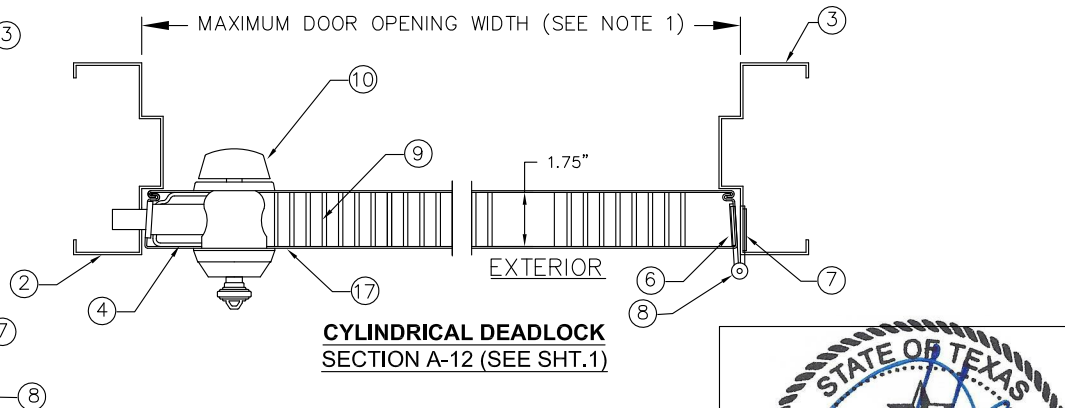
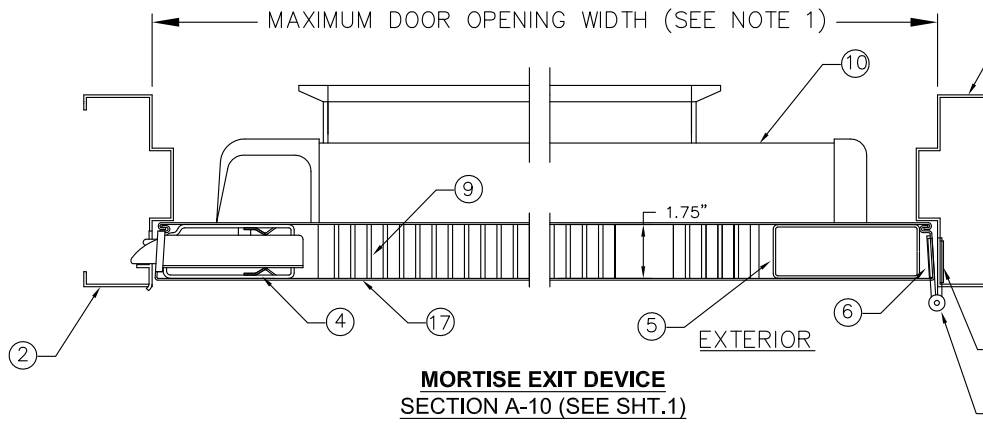
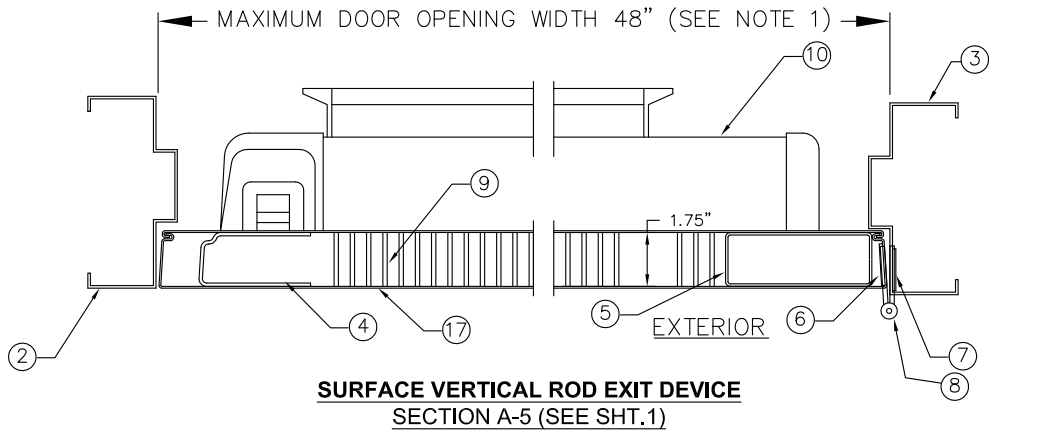
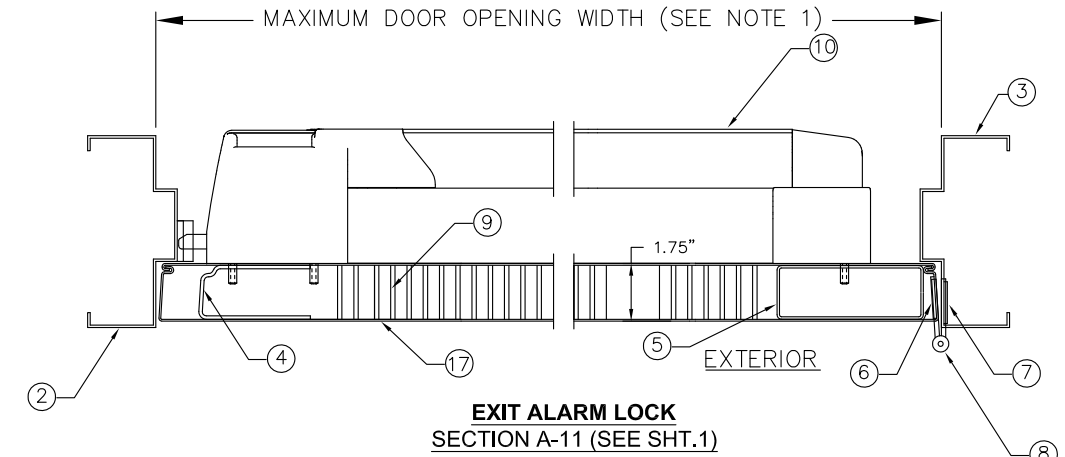
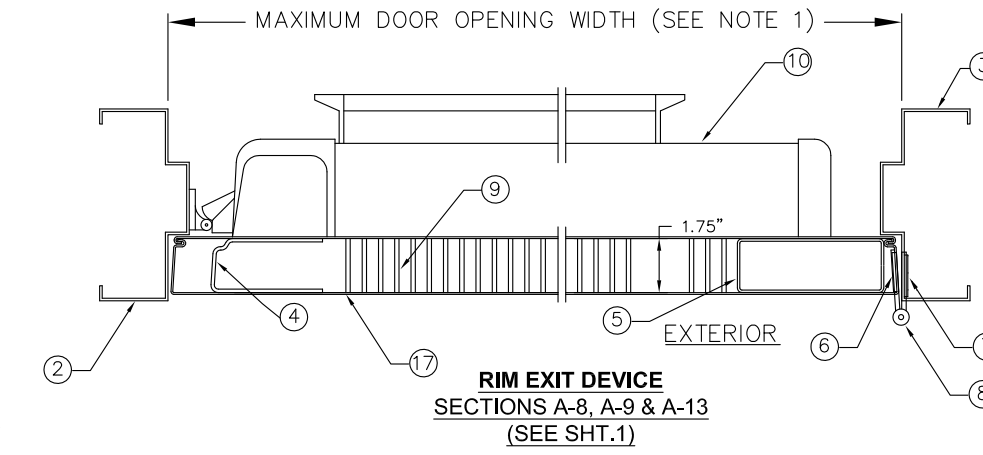
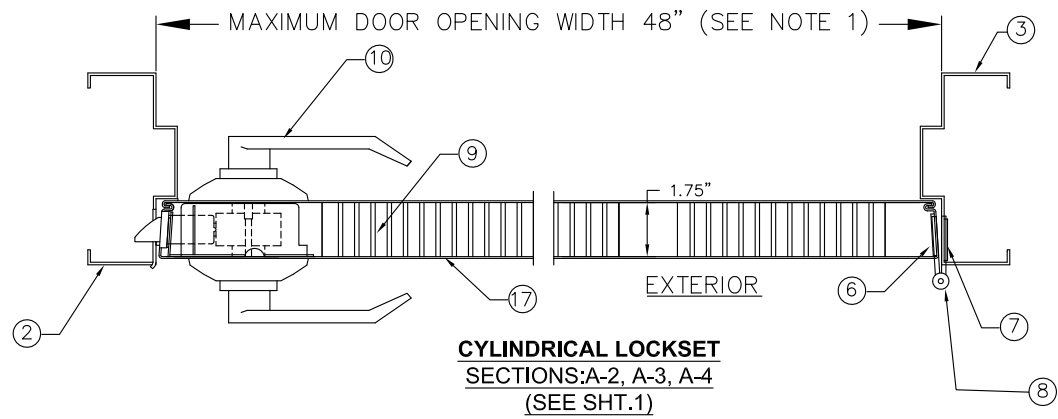
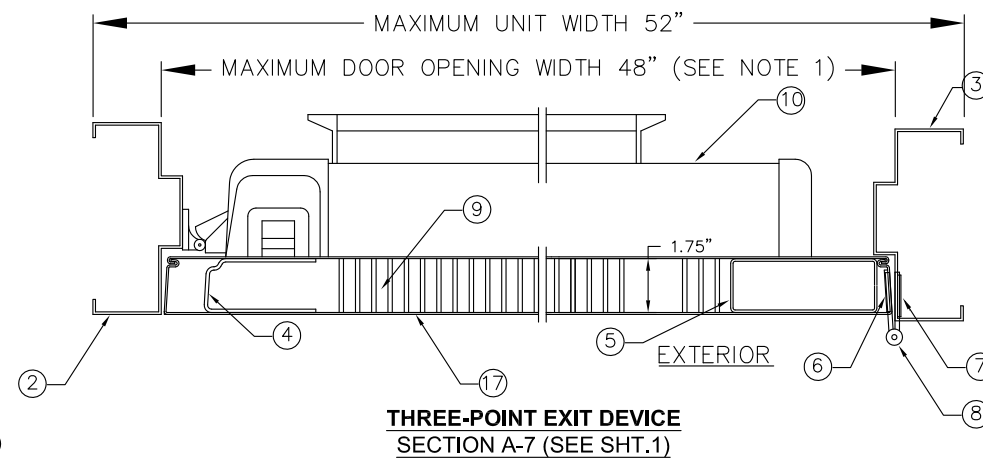
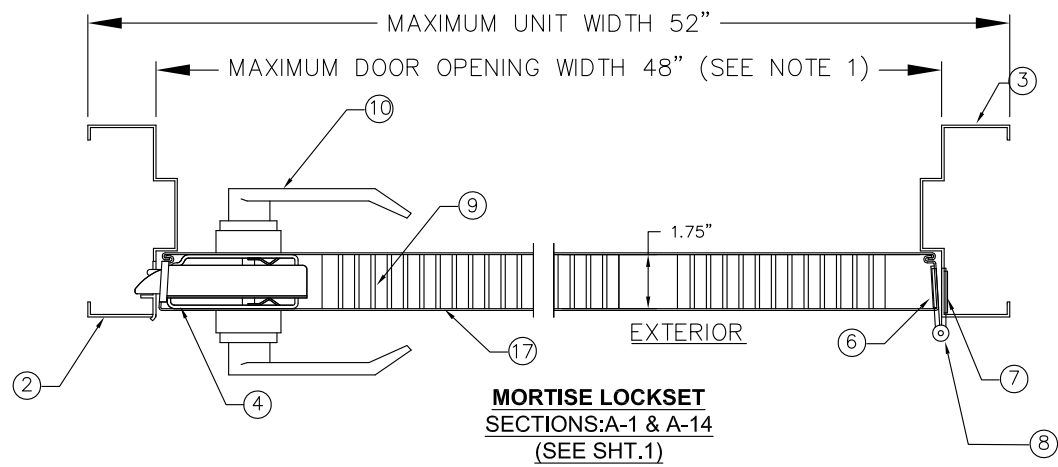
- NOTE:
1. FIRE RATINGS ARE NOT PART OF THIS APPROVAL AND ARE TO BE REVIEWED BY THE BUILDING OFFICIAL
 2. ELECTRIFIED FUNCTIONS APPROVED, BUT NOT SHOWN ABOVE



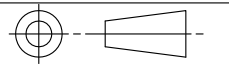
SCHLAGE AD-CY & CO-CY SERIES CYLINDRICAL LOCKSET USED IN DOOR CONFIGURATIONS 3 & 4 (SEE SHT.1)

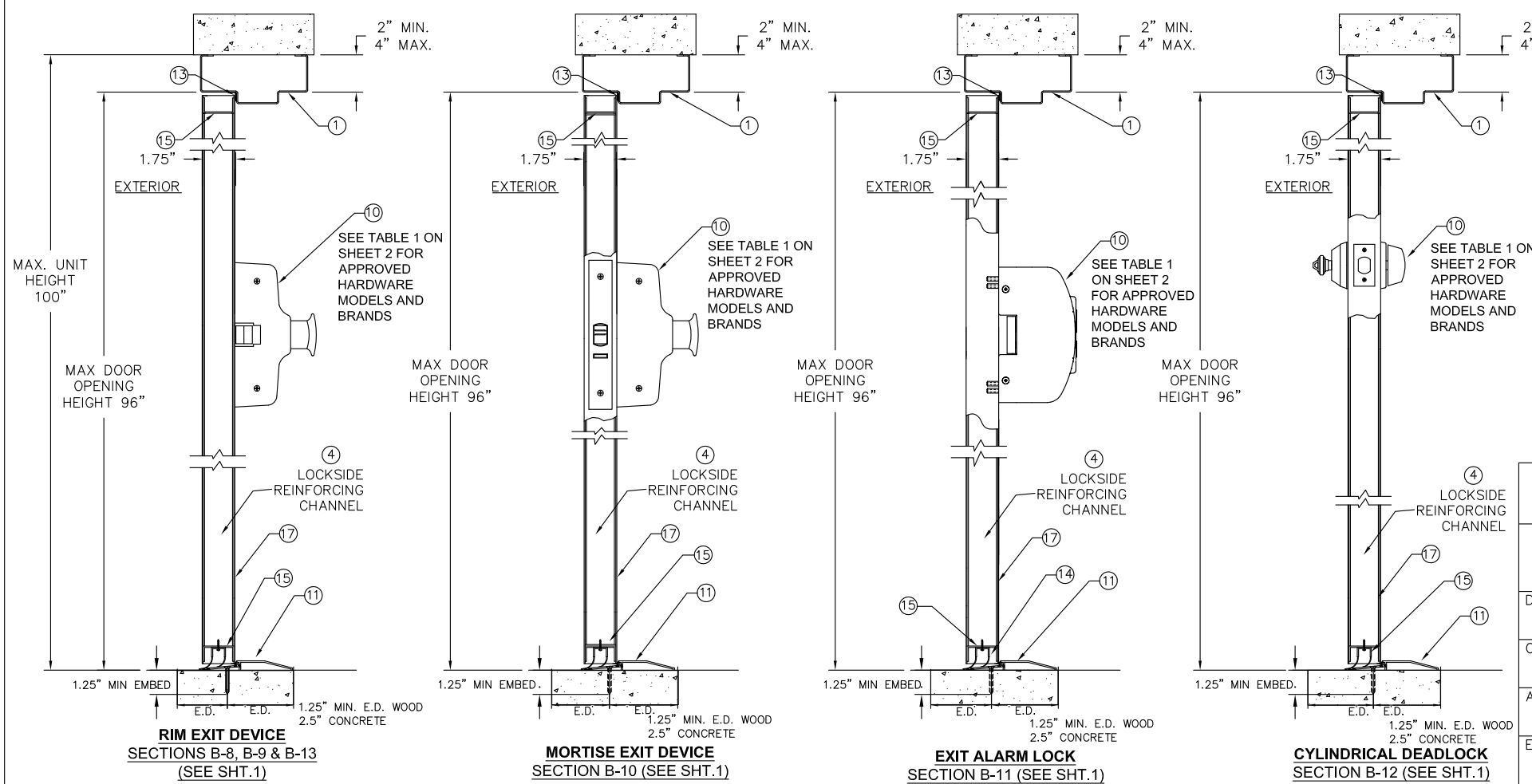
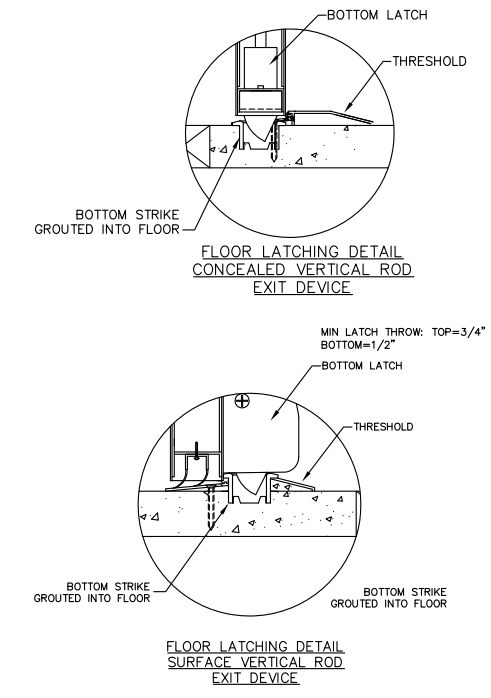
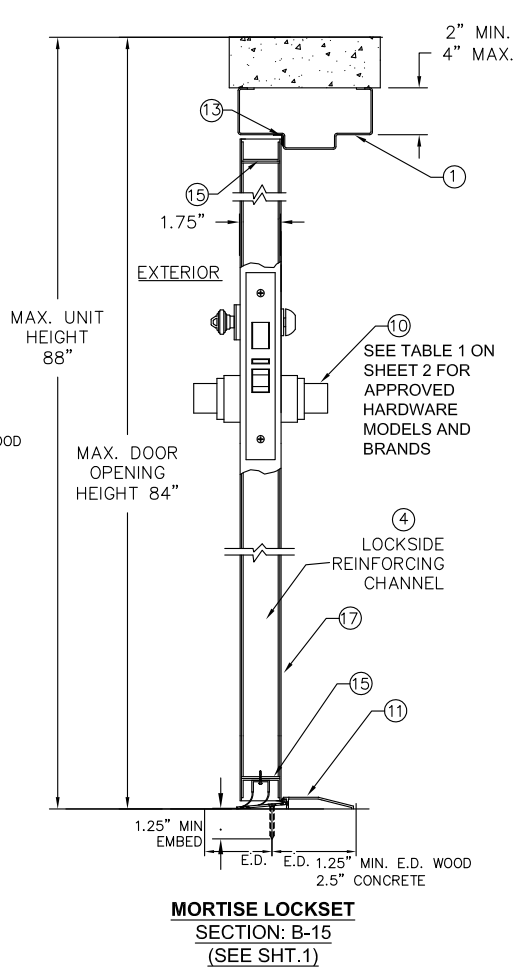
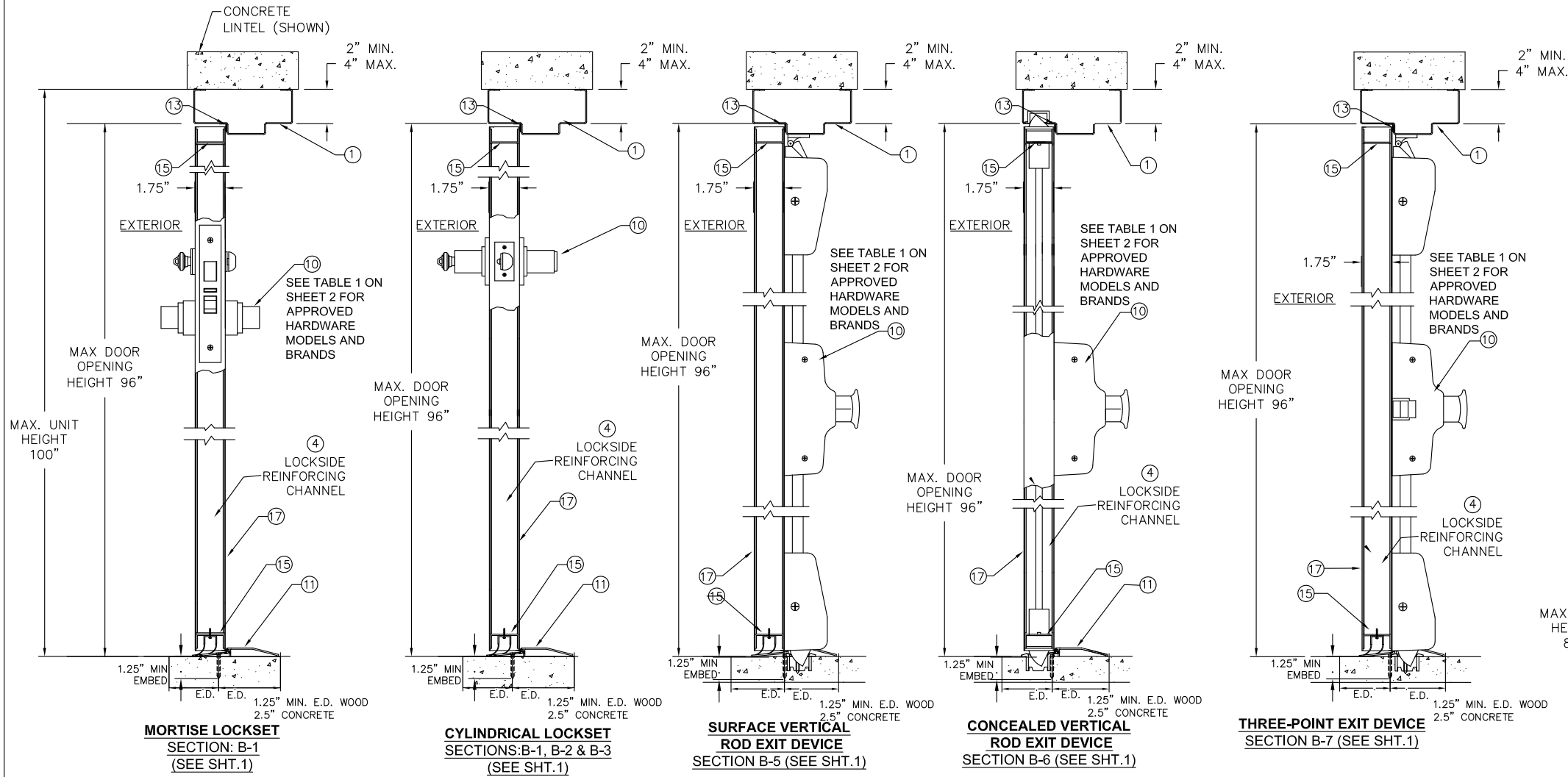


BEND RADIUS		SCHLAGE LOCK COMPANY, LLC 11819 N. PENNSYLVANIA STREET CARMEL, IN 46032	
THIRD ANGLE PROJECTION		TITLE: STEELCRAFT H SERIES SINGLE FLUSH OUTSWING COMMERCIAL STEEL DOORS WITH AND WITHOUT PANIC EXIT DEVICES	
DRAWN YMF	DATE 05/20/07	HARDWARE OPTIONS FOR FLUSH SINGLE DOORS.	
CHECKED		SIZE FLAT	DWG NO. IRFS07-T
APPROVED		SCALE NTS	REV B 1-9-20
ENG. APPVL JPD	10/11/07	AUTOCAD	SHEET 10 of 14

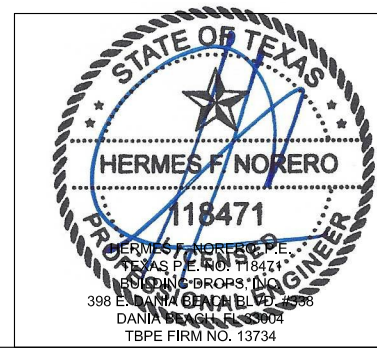


- NOTES:**
1. FOR MAXIMUM OPENING SIZE SEE TABLE 1 ON SHEETS 1, 2, 3, 11 & 12.
 2. SINGLE OUTSWING DOORS, SEE SHEET 4 FOR INSTALLATION INFORMATION.

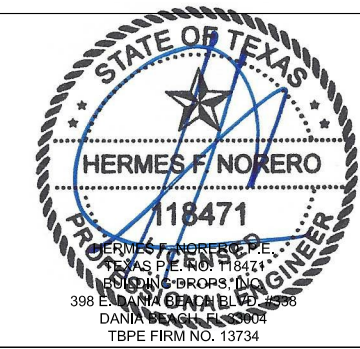
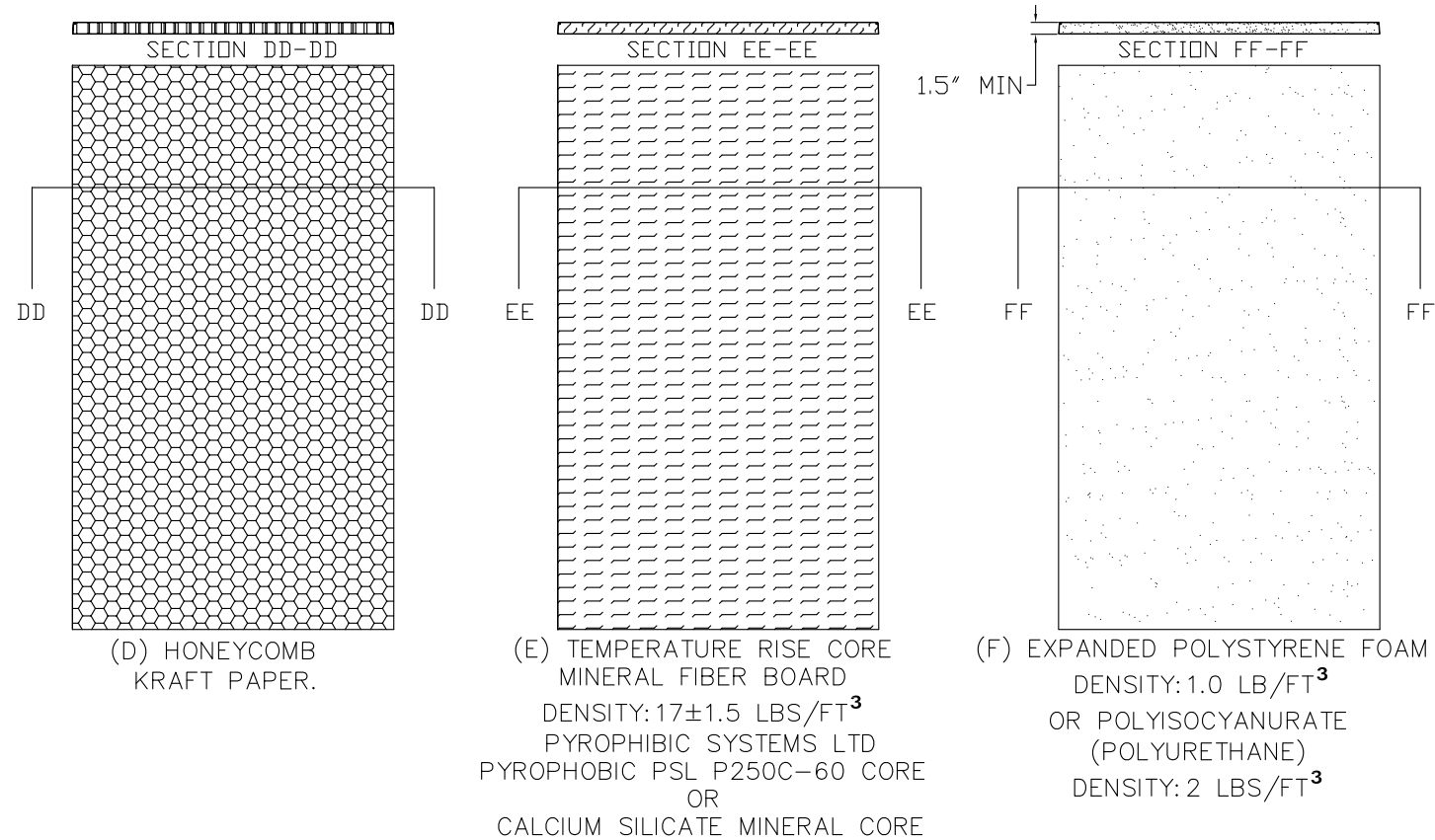
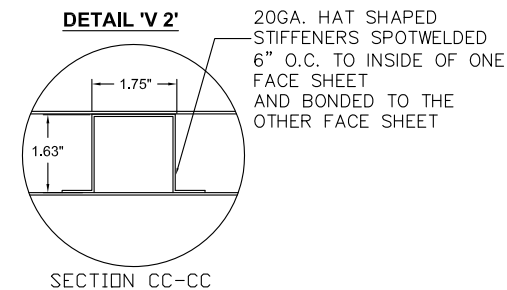
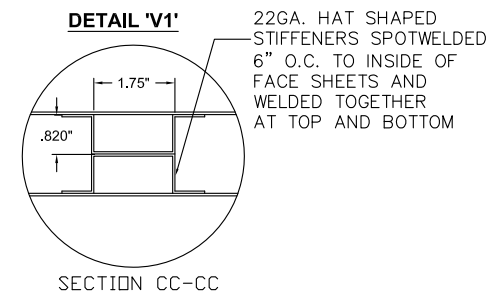
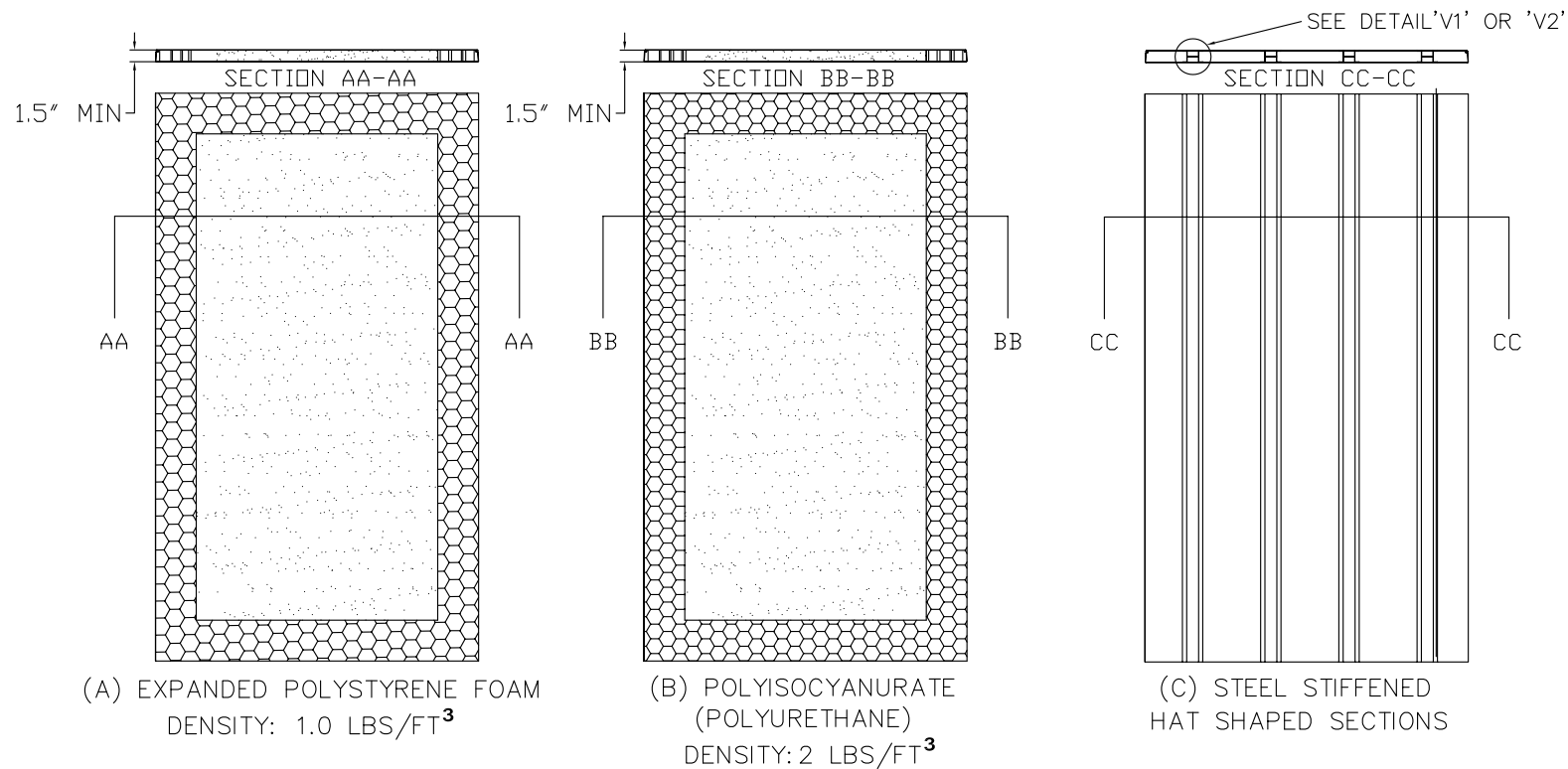
BEND RADIUS		SCHLAGE LOCK COMPANY, LLC 11819 N. PENNSYLVANIA STREET CARMEL, IN 46032			
 THIRD ANGLE PROJECTION					
DRAWN YMF	DATE 05/20/007	TITLE: STEELCRAFT H SERIES SINGLE FLUSH OUTSWING COMMERCIAL STEEL DOORS WITH AND WITHOUT PANIC EXIT DEVICES HORIZONTAL CROSS SECTIONS FOR FLUSH SINGLE DOORS.			
CHECKED					
APPROVED		SIZE FLAT	DWG NO. IRFS07-T	REV B 1-9-20	
ENG. APPVL JPD	10/11/07	SCALE: NTS	AUTOCAD	SHEET 11 of 14	



NOTES:
 1. FOR MAXIMUM DOOR & UNIT OPENING SIZES SEE ELEVATION SHEET 1 AND TABLE 1 ON SHEET 2 AND SHEETS 11 & 12.
 2. SEE SHEET 4 FOR THRESHOLD AND ANCHOR INSTALLATION DETAILS.

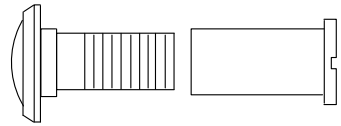


BEND RADIUS		SCHLAGE LOCK COMPANY, LLC 11819 N. PENNSYLVANIA STREET CARMEL, IN 46032	
THIRD ANGLE PROJECTION		TITLE: STEELCRAFT H SERIES SINGLE FLUSH OUTSWING COMMERCIAL STEEL DOORS WITH AND WITHOUT PANIC EXIT DEVICES	
DRAWN YMF	DATE 05/20/07	VERTICAL CROSS SECTIONS FOR FLUSH SINGLE DOORS.	
CHECKED		SIZE FLAT	DWG NO. IRFS07-T
APPROVED		SCALE: NTS	REV B 1-9-20
ENG. APPVL JPD	10/11/07	AUTOCAD	SHEET 12 of 14



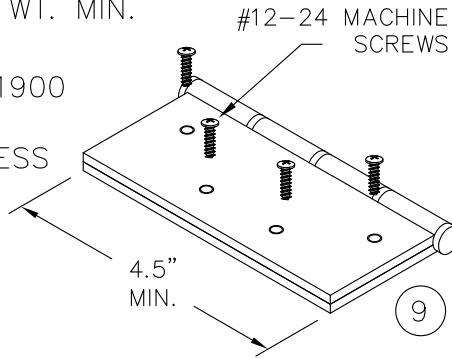
NOTES:
1. CORE MATERIAL SHOWN WITHOUT CUTOUTS FOR REINFORCEMENTS

BEND RADIUS		SCHLAGE LOCK COMPANY, LLC 11819 N. PENNSYLVANIA STREET CARMEL, IN 46032			
THIRD ANGLE PROJECTION		TITLE: STEELCRAFT H SERIES SINGLE FLUSH OUTSWING COMMERCIAL STEEL DOORS WITH AND WITHOUT PANIC EXIT DEVICES			
DRAWN JPD	DATE 02/03/14	DOOR CORE OPTIONS		REV B 1-9-20	
CHECKED		SIZE FLAT	DWG NO. IRFS07-T	SHEET 13 of 14	
APPROVED		SCALE: NTS	AUTOCAD		
ENG. APPVL					

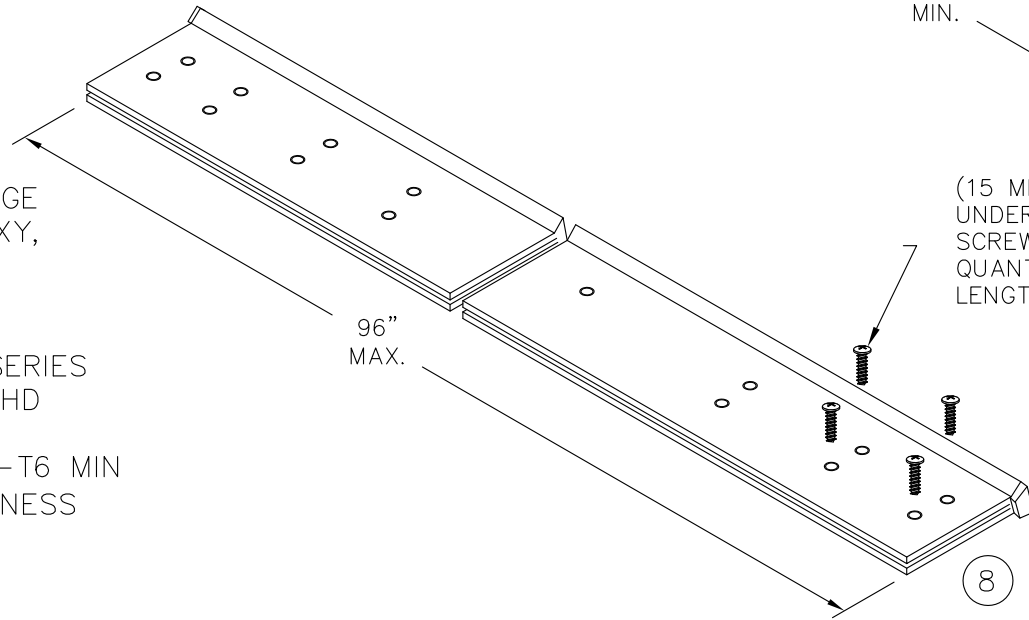


24 IVES 698/U698 DOOR VIEWER
APPLICATION LIMITED TO +/- 75 PSF
DESIGN PRESSURE OR LESS

BUTT HINGE
4.5" X 4.5" STD. WT. MIN.
IVES 5BB1/3CB1
STANLEY FBB179/1900
HAGER BB1279
.134" MIN. THICKNESS
Fy MIN. = 36ksi

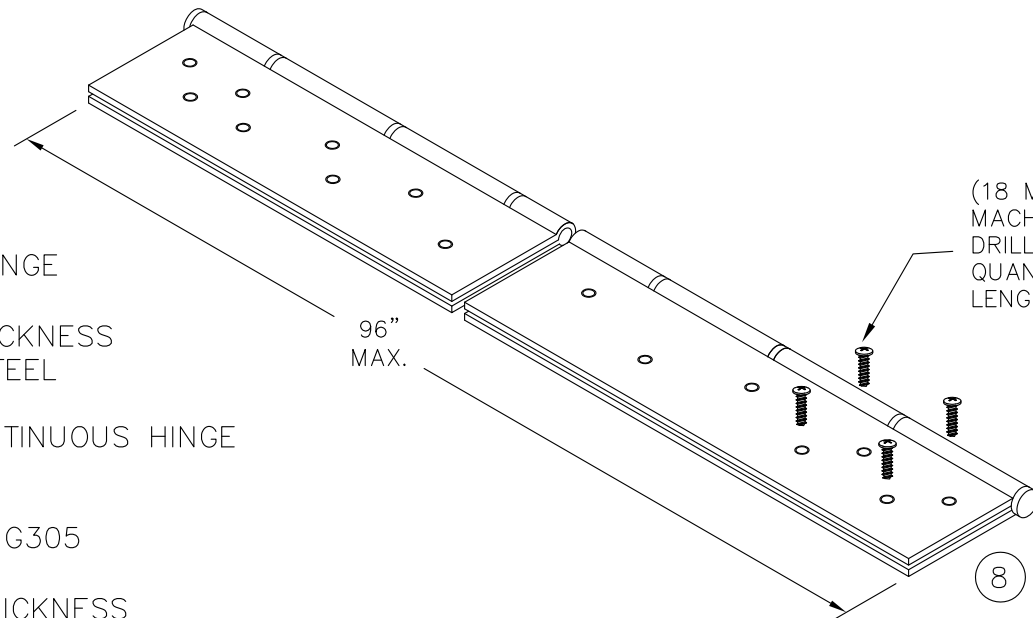


CONTINUOUS HINGE
IVES 112HD, 112XY,
224HD & 224XY
STANLEY 661HD
SELECT SL11HD
PEMKO FM_HD SERIES
HAGER 780-224HD
ABH A240HD
ALUMINUM 6036-T6 MIN
.110" MIN. THICKNESS



(15 MIN.) 12-24x3/4" FLAT HEAD
UNDERCUT SELF DRILLING
SCREW DOOR AND FRAME LEAF
QUANTITY VARIES PER HINGE
LENGTH

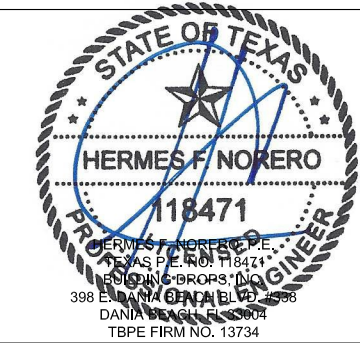
STEEL CONTINUOUS HINGE
IVES 600
.075 MIN. (14GA.) THICKNESS
1012 COLD ROLLED STEEL
Fy MIN. 45ksi
STAINLESS STEEL CONTINUOUS HINGE
IVES 700, 700CS
HAGER 790-900
MARKAR FM-300 & HG305
ABH A500
.075" MIN. (14GA.) THICKNESS
304 STAINLESS STEEL
Fy MIN. 31ksi



(18 MIN.) #10-24X 1/2" MIN.
MACHINE SCREW OR SELF
DRILLING EACH HINGE LEAF
QUANTITY VARIES PER HINGE
LENGTH

CONTINUOUS HINGE NOTES:

1. QUANTITY OF SCREWS VARIES PER HINGE LENGTH, MANUFACTURER AND MODEL NUMBER
2. SCREW SPACING VARIES PER HINGE LENGTH, MANUFACTURER AND MODEL NUMBER
3. INSTALL HINGES PER THE MANUFACTURERS INSTALLATION INSTRUCTIONS



BEND RADIUS		SCHLAGE LOCK COMPANY, LLC 11819 N. PENNSYLVANIA STREET CARMEL, IN 46032			
THIRD ANGLE PROJECTION		TITLE: STEELCRAFT H SERIES SINGLE FLUSH OUTSWING COMMERCIAL STEEL DOORS WITH AND WITHOUT PANIC EXIT DEVICES			
DRAWN JPD	DATE 02/03/14	HINGE AND VIEWER OPTIONS			
CHECKED					
APPROVED		SIZE FLAT	DWG NO. IRFS07-T	REV B 1-9-20	
ENG. APPVL		SCALE: NTS	AUTOCAD	SHT 14 OF 14	