

JELD-WEN DOOR SYSTEM
IMPACT STEEL WOOD EDGE
ENERGY SAVER / CONTOURS FULL LITE DOORS
AND FULL LITE SIDELITES
12'-0" X 6'-8" OUTSWING/INSWING
(0,XX,0)

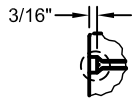
GENERAL NOTES

- THIS PRODUCT IS DESIGNED TO COMPLY WITH THE 2018 INTERNATIONAL BUILDING CODE (I.B.C.) & 2018 INTERNATIONAL RESIDENTIAL CODE (I.R.C.) AND THE TEXAS REVISIONS. PRODUCT HAS BEEN TESTED TO ASTM E1996-05b, ASTM 1886-05, ASTM E283-04, E330-02, E331-00 & AAMA 1304.
- 1X AND 2X WOOD BUCKS BY OTHERS AND MUST BE ANCHORED PROPERLY TO TRANSFER LOADS TO THE STRUCTURE. BUCK MATERIAL MUST HAVE A SPECIFIC GRAVITY OF 0.42 OR GREATER.
- PRODUCT ANCHOR TYPES AND SPACING ARE SHOWN ON SHEET 5. DIMENSIONS SHOWN FOR ANCHOR SPACING ARE ALWAYS FROM EDGE OF UNIT FRAME. ANCHOR EMBEDMENT TO BASE MATERIAL SHALL BE BEYOND WALL DRESSING OR STUCCO.
- THIS DOCUMENT SUPERCEDES OTHER ANCHOR INSTALLATION INSTRUCTIONS FOR IMPACT RATED DOORS. FOR OTHER IMPORTANT INSTALLATION INSTRUCTIONS, REFER TO JELD-WEN DOCUMENT #J11106 (INSTALLATION INSTRUCTIONS FOR PRE-HUNG ENTRY DOORS) FOUND ON THE JELD-WEN WEBSITE: [JELD-WEN.COM/LEARN/RESOURCES/INSTALLATION & FINISHING/](http://JELD-WEN.COM/LEARN/RESOURCES/INSTALLATION&FINISHING/).
- FULL LITE APPROVAL COVERS USE OF FRACTIONAL GLAZING, INCLUDING OVALS, SUNBURST & ROUND-TOPS. ALSO INCLUDED ARE INTERNAL AND EXTERNAL GRID, BLINDS BETWEEN GLASS, EXTERNAL WROUGHT IRON & DECO. ALSO, SIDELITES ARE AN OPTION & CAN BE USED IN A SINGLE OR DOUBLE CONFIGURATION.

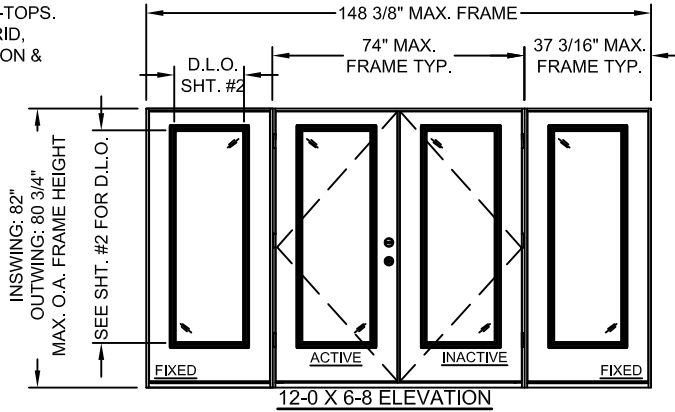
6. FOR DESIGN PRESSURE RATINGS, SEE TABLE 1, SHEET 1.

7. ALL FASTENERS IN WOOD SHALL BE COUNTERSUNK 3/16" DEEP.

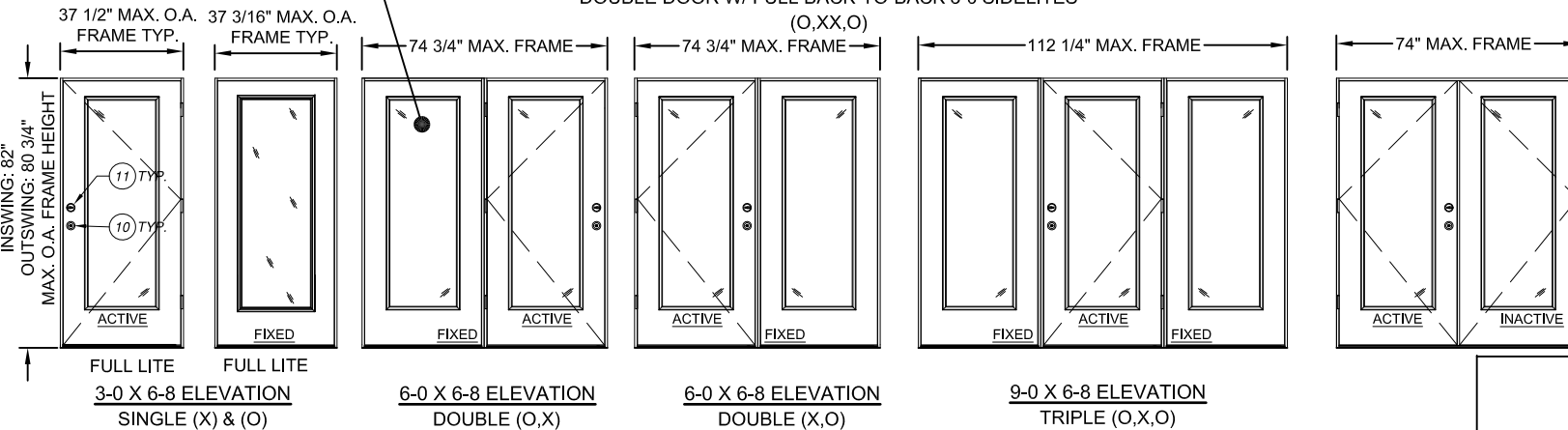
EXAMPLE:



IMPACT LITE TYP.
SEE SHT. #2



12-0 X 6-8 ELEVATION
DOUBLE DOOR W/ FULL BACK-TO-BACK 3-0 SIDELITES
(0,XX,0)



6-0 X 6-8 ELEVATION
DOUBLE (XX)

TABLE 1		DESIGN PRESSURE RATING:
SIZE		QUALIFIES: IMPACT GLAZED ACTIVE PANELS AND SIDELITES
MAX. PANEL WIDTH = 35 3/4"		6-8 TALL SYSTEMS:
		(XX) (XXO) (QXXO) (X) (OX) (XO) (OXO)
OUTSWING	POSITIVE	+ 50*
	NEGATIVE	- 55*
INSWING	POSITIVE	+ 50*
	NEGATIVE	- 55*

COMPONENT LIST			
ITEM	DESCRIPTION	MATERIAL	QTY.
1	NON-COMPRESSION SHIM (0.25" MAX. THK.)	WOOD	AS REQ.
2	2x WOOD SUB BUCK (S.G. MUST BE 0.42 OR GREATER)	WOOD	AS REQ.
3	ITEM NOT USED		
4	#10 WOOD INSTALLATION SCREW W/ 1 1/2" MIN. EMBEDMENT	STEEL	AS REQ.
5	ITEM NOT USED		
6	#9 X 2 1/2" PHILLIPS FLATHEAD WOOD SCREW	STEEL	2 OR 4
7	#8 X 2" PHILLIPS FLATHEAD WOOD SCREW	STEEL	AS REQ.
8	#9 X 3/4" PHILLIPS FLATHEAD WOOD SCREW	STEEL	22 OR 44
9	1" O.A. IG IMPACT FRAME GLAZED BY ODL	ALUMINUM	1 OR 2
10	KWIKSET LOCK SERIES 400	STEEL	1
11	KWIKSET DEADBOLT SERIES 780	STEEL	1

* NOTE(s):

- INSWING PRODUCT MEETS WATER INFILTRATION REQUIREMENTS ASTM E331-00 @ 2.86 psf
- OUTSWING PRODUCT MEETS WATER INFILTRATION REQUIREMENTS ASTM E331-00 @ 6.00 psf

JELD WEN
WINDOWS & DOORS
3737 Lakeport Blvd.
Klamath Falls, OR 97601
Phone: (541) 882-3451
Fax: (541) 850-2609

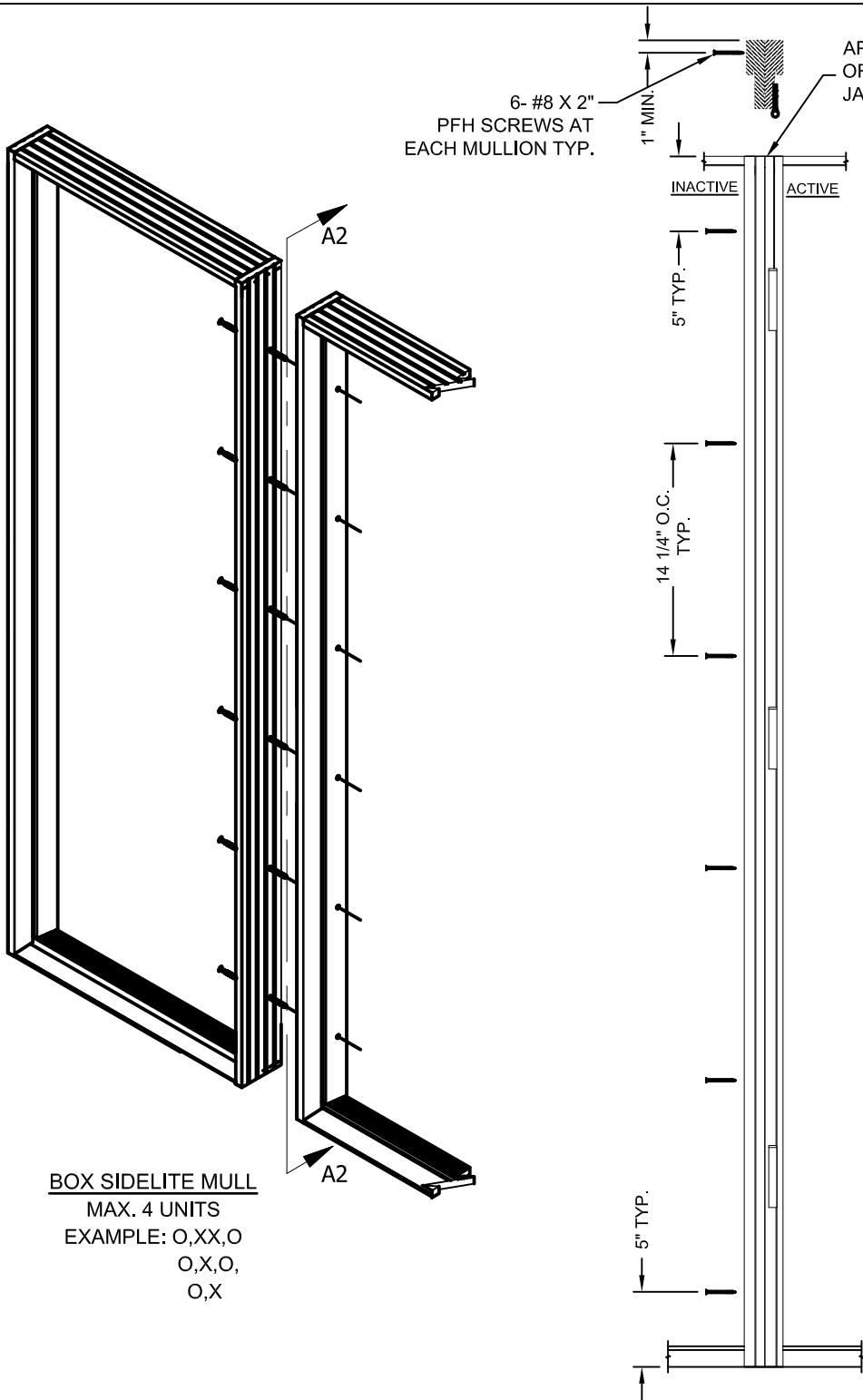
PRODUCT
STEEL WOOD EDGE 12-0 X 6-8 FULL LITE
INSWING/OUTSWING IMPACT GLAZING
PART OR ASSEMBLY
GENERAL NOTES, ELEVATIONS, DP RATINGS
AND B.O.M.



Joseph A. Reed, P.E.
Texas No. 100777
National Certified Testing Laboratories
5 Leigh Drive, York, PA 17406
(717) 846-1200

DATE: 10/03/2012
SCALE: NONE
DWG. BY: G.LUBBECKE
CHK. BY: S.SAFFELL
DRAWING No.:
A008273
SHEET 1 OF 5

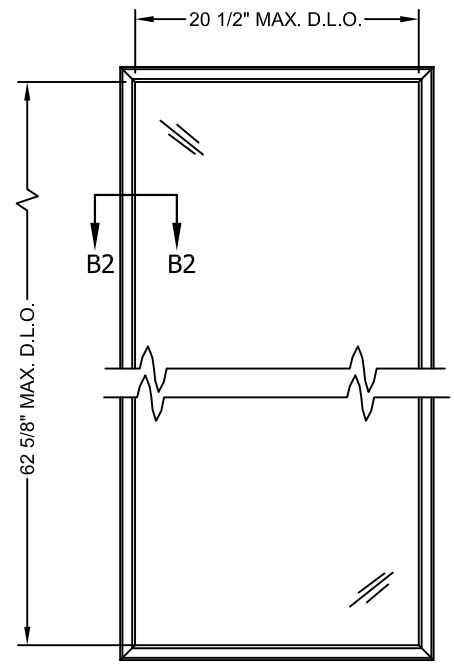
SHEET INDEX	
SHEET #	DESCRIPTION
1	GENERAL NOTES, B.O.M. & ELEVATIONS
2	OUTSWING/INSWING BOX MULLING DETAILS
3	OUTSWING VERTICAL AND HORIZONTAL SECTIONS IN WOOD
4	INSWING VERTICAL AND HORIZONTAL SECTIONS IN WOOD
5	OUTSWING AND INSWING ANCHORING DETAILS



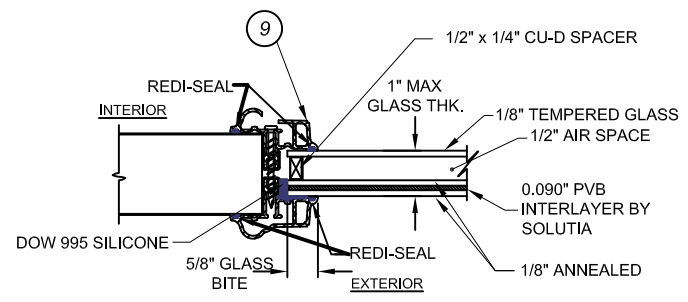
BOX SIDELITE MULL
 MAX. 4 UNITS
 EXAMPLE: O,XX,O
 O,X,O,
 O,X

APPLY DAP ALEX PLUS SILICONE
 OR EQUIV. BETWEEN
 JAMBS BEFORE MULLING

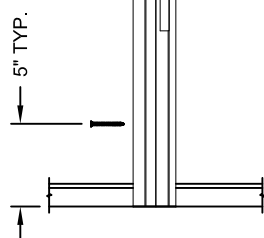
6- #8 X 2"
 PFH SCREWS AT
 EACH MULLION TYP.



ODL ALLEN IMPACT
 3-0 X 6-8 SHOWN



DETAIL B2
 ODL IMPACT GLAZING DETAIL
 MAX. D.L.O: 20 1/2" X 62 5/8"



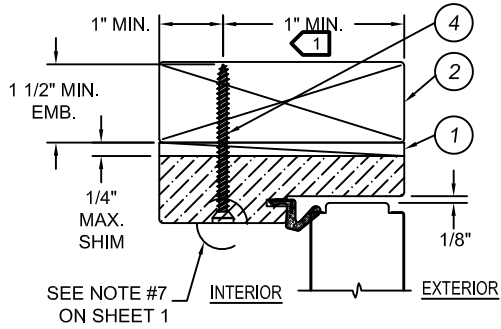
DETAIL A2
 (6) FASTENER LOCATIONS AT
 DOUBLE-BACK JAMB ATTACHMENT

JELD-O-WEN
 WINDOWS & DOORS
 3737 Lakeport Blvd.
 Klamath Falls, OR 97601
 Phone: (541) 882-3451
 Fax: (541) 850-2609

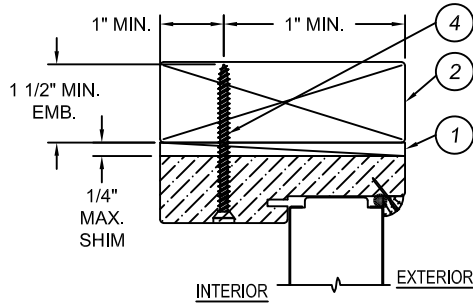
PRODUCT
**STEEL WOOD EDGE 12-0 X 6-8 FULL LITE
 INSWING/OUTSWING IMPACT GLAZING**
 PART OR ASSEMBLY
 MULLING DETAILS AND GLAZING OPTIONS

DATE: 10/03/2012
 SCALE: NONE
 DWG. BY: G.LUBBECKE
 CHK. BY: S.SAFFELL
 DRAWING No.:
A008273
 SHEET 2 OF 5

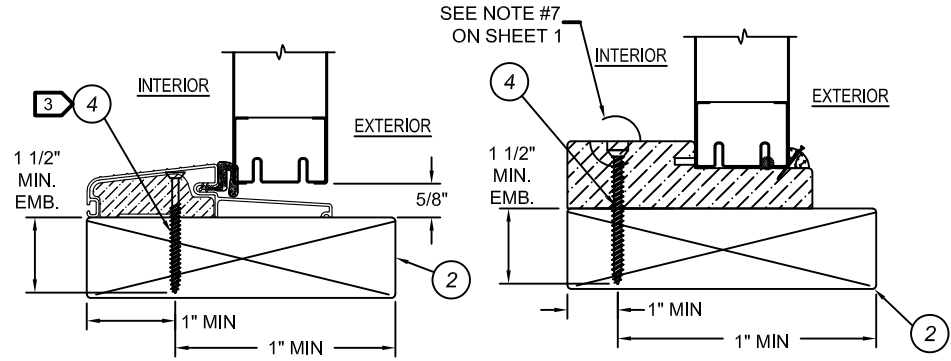
2021.04.21.11:43:24_04100
 Joseph A. Reed, P.E.
 Texas No. 100777
 National Certified Testing Laboratories
 5 Leigh Drive, York, PA 17406
 (717) 846-1200



**OUTSWING OPERATING UNIT
VERTICAL CROSS SECTION
HEAD JAMB**

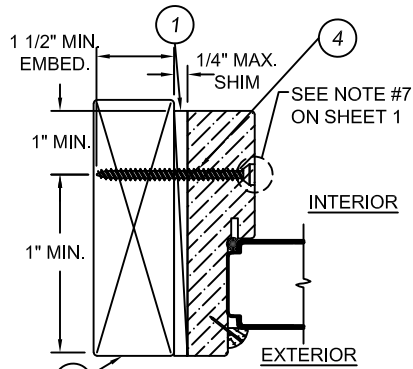


**OUTSWING FIXED UNIT
VERTICAL CROSS SECTION
SILICONE AT HEAD JAMB**



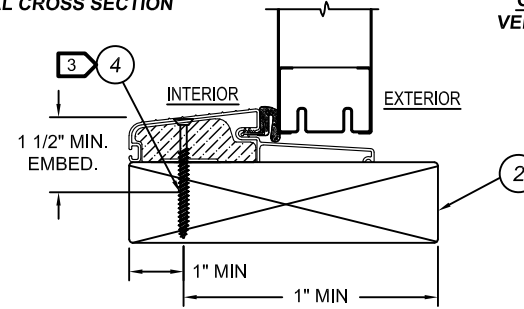
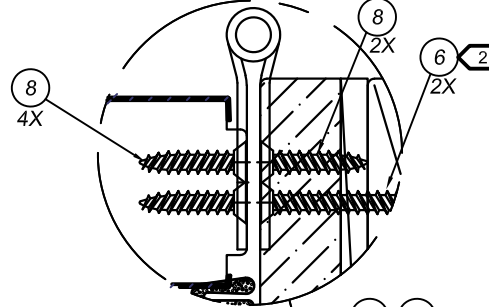
**OUTSWING OPERATING UNIT
VERTICAL CROSS SECTION**

**OUTSWING FIXED UNIT
VERTICAL CROSS SECTION
JAMB W/ FIXED SEAT**

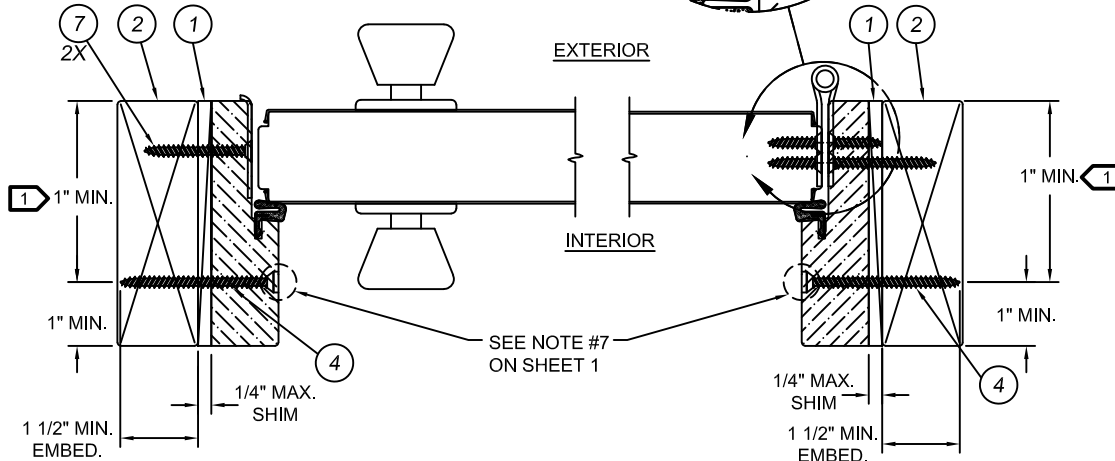


**FIXED UNIT
HORIZONTAL CROSS SECTION
OUTSWING SHOWN**

HINGE DETAIL:
TOP = 6 SCREWS (ITEM #8), 2 SCREWS (ITEM #6)
CENTER = 8 SCREWS (ITEM #8)
BOTTOM = 8 SCREWS (ITEM #8)



**OUTSWING OPERATING UNIT
VERTICAL CROSS SECTION**



**OUTSWING LATCH JAMB AT FRAME
HORIZONTAL CROSS SECTION**

**OUTSWING HINGE JAMB AT FRAME
HORIZONTAL CROSS SECTION**

NOTES:

- 1 OPTIONALLY, ANCHOR CAN BE PLACED IN NARROW SECTION OF HEAD OR JAMB AS LONG AS MINIMUM EMBEDMENT AND EDGE DISTANCE ARE ACHIEVED.
- 2 ITEM #6, (#9 X 2 1/2") TWO SCREWS TO BE INSTALLED IN TOP HINGE AT JOB SITE, CLOSEST TO WEATHERSTRIP.
- 3 AT SILL, PLACE ANCHOR IN SILL BASE MATERIAL FOR MAXIMUM SUPPORT.

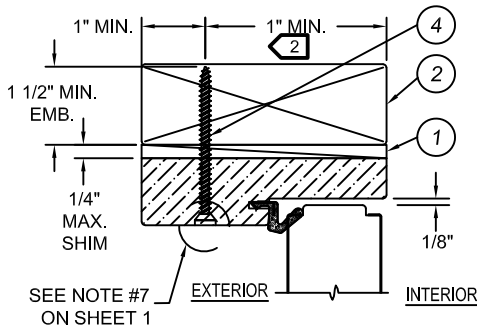


Joseph A. Reed, P.E.
Texas No. 100777
National Certified Testing Laboratories
5 Leigh Drive, York, PA 17406
(717) 846-1200

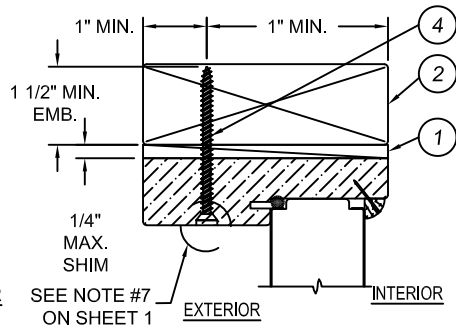
JELDOWEN
WINDOWS & DOORS
3737 Lakeport Blvd.
Klamath Falls, OR 97601
Phone: (541) 882-3451
Fax: (541) 850-2609

PRODUCT
STEEL WOOD EDGE 12-0 X 6-8 FULL LITE
INSWING/OUTSWING IMPACT GLAZING
PART OR ASSEMBLY
OUTSWING VERTICAL AND HORIZONTAL SECTIONS
IN WOOD

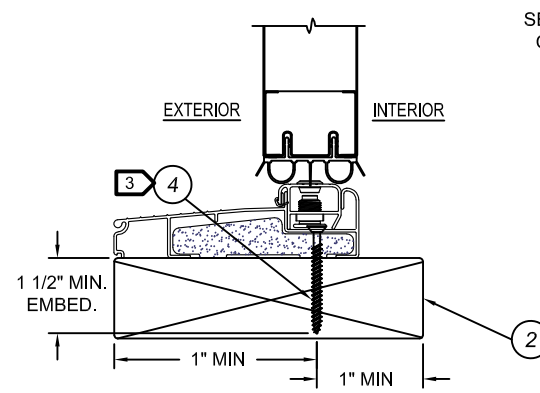
DATE: 10/03/2012
SCALE: NONE
DWG. BY: G.LUBBECKE
CHK. BY: S.SAFFELL
DRAWING No.:
A008273
SHEET 3 OF 5



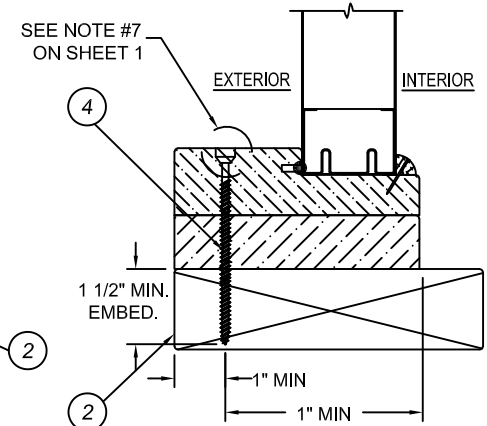
**INSWING OPERATING UNIT
VERTICAL CROSS SECTION
HEAD JAMB**



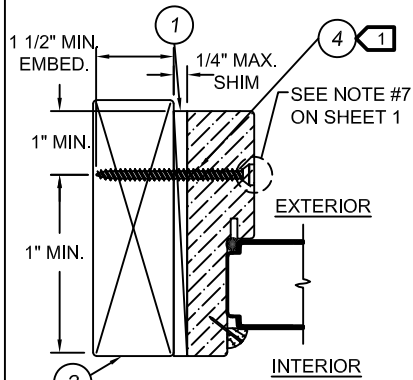
**INSWING FIXED UNIT
VERTICAL CROSS SECTION
HEAD JAMB**



**INSWING OPERATING UNIT
VERTICAL CROSS SECTION**

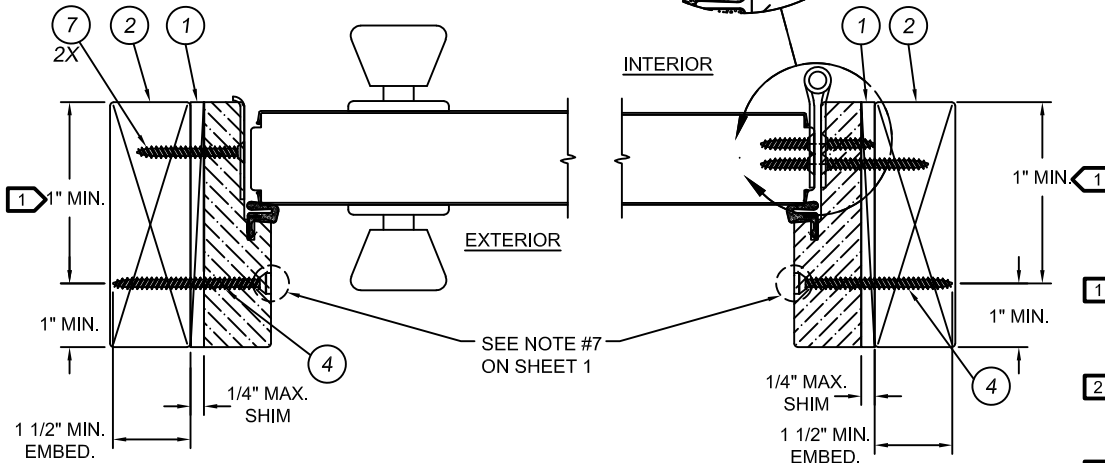
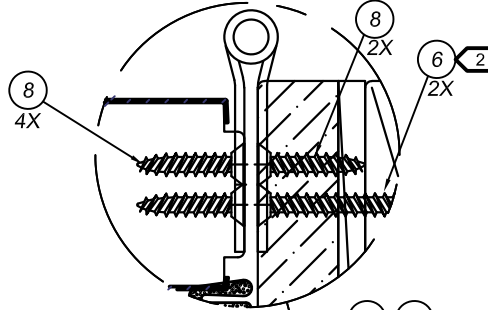


**INSWING STATIONARY UNIT
VERTICAL CROSS SECTION**



**FIXED UNIT
HORIZONTAL CROSS SECTION
INSWING SHOWN**

HINGE DETAIL:
TOP = 6 SCREWS (ITEM #8), 2 SCREWS (ITEM #6)
CENTER = 8 SCREWS (ITEM #8)
BOTTOM = 8 SCREWS (ITEM #8)



**INSWING LATCH JAMB AT FRAME
HORIZONTAL CROSS SECTION**

**INSWING HINGE JAMB AT FRAME
HORIZONTAL CROSS SECTION**

NOTES:

- 1 OPTIONALLY, ANCHOR CAN BE PLACED IN NARROW SECTION OF HEAD OR JAMB AS LONG AS MINIMUM EMBEDMENT AND EDGE DISTANCE ARE ACHIEVED.
- 2 ITEM #6, (#9 X 2 1/2") TWO SCREWS TO BE INSTALLED IN TOP HINGE AT JOB SITE, CLOSEST TO WEATHERSTRIP.
- 3 AT SILL, PLACE ANCHOR IN SILL BASE MATERIAL FOR MAXIMUM SUPPORT.



Joseph A. Reed

Joseph A. Reed, P.E.
Texas No. 100777
National Certified Testing Laboratories
5 Leigh Drive, York, PA 17406
(717) 846-1200

JELDOWEN
WINDOWS & DOORS
3737 Lakeport Blvd.
Klamath Falls, OR 97601
Phone: (541) 882-3451
Fax: (541) 850-2609

PRODUCT
**STEEL WOOD EDGE 12-0 X 6-8 FULL LITE
INSWING/OUTSWING IMPACT GLAZING**
PART OR ASSEMBLY
**INSWING VERTICAL AND HORIZONTAL SECTIONS
IN WOOD**

DATE: 10/03/2012

SCALE: NONE

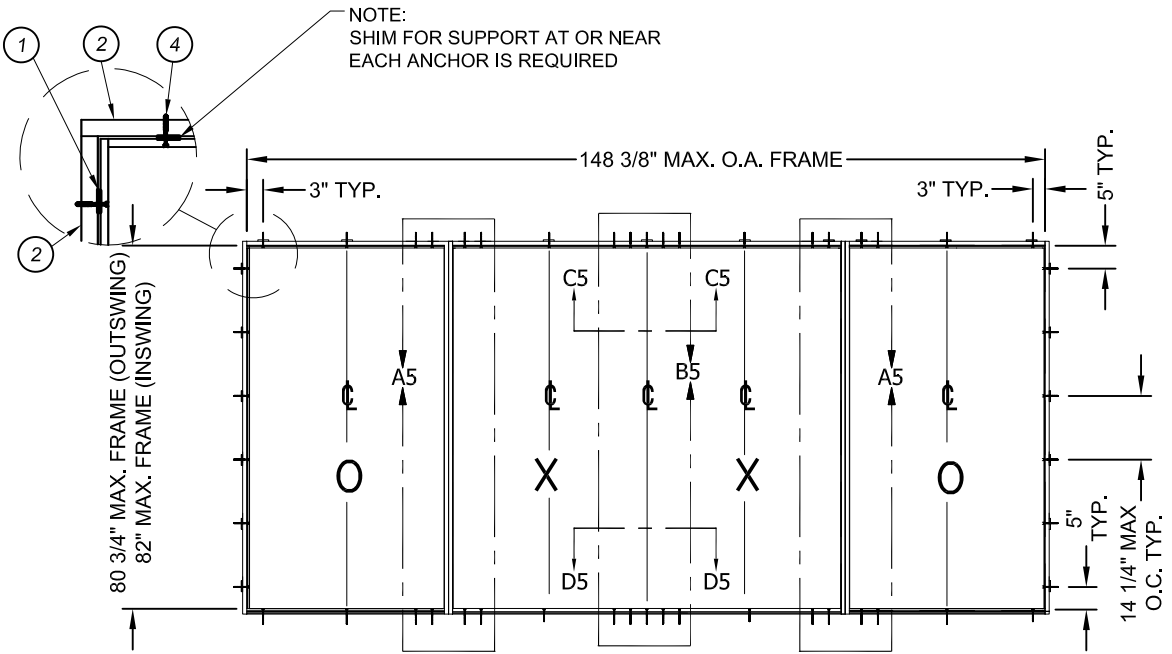
DWG. BY: G.LUBBECKE

CHK. BY: S.SAFFELL

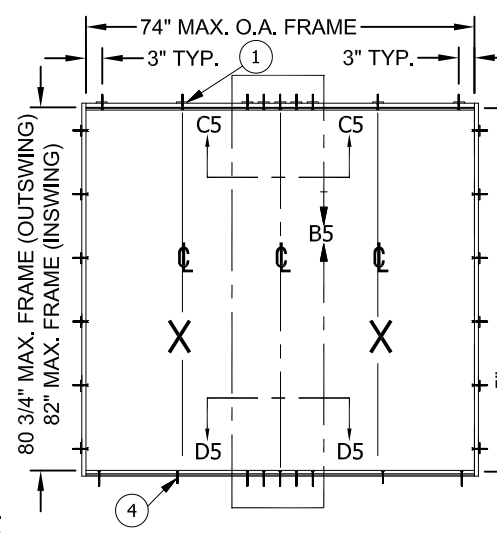
DRAWING No.:
A008273

SHEET 4 OF 5

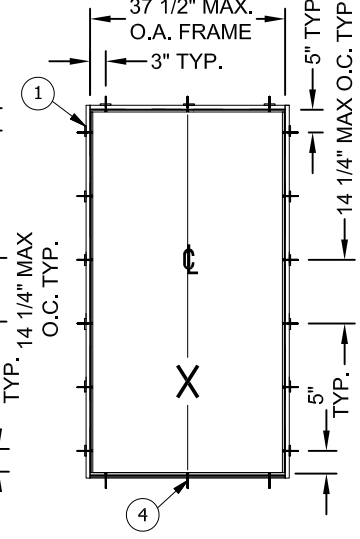
NOTE:
SHIM FOR SUPPORT AT OR NEAR
EACH ANCHOR IS REQUIRED



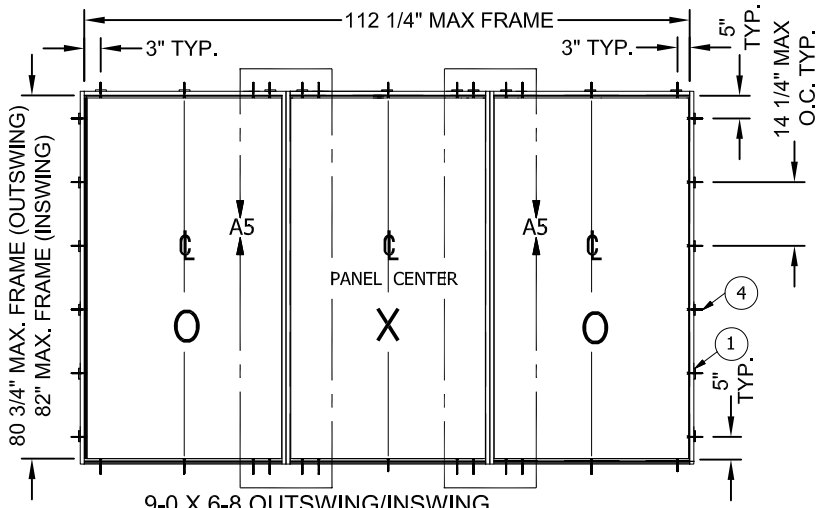
12-0 X 6-8 OUTSWING/INSWING
(50) ANCHOR LOCATIONS
(FROM EDGE OF FRAME)



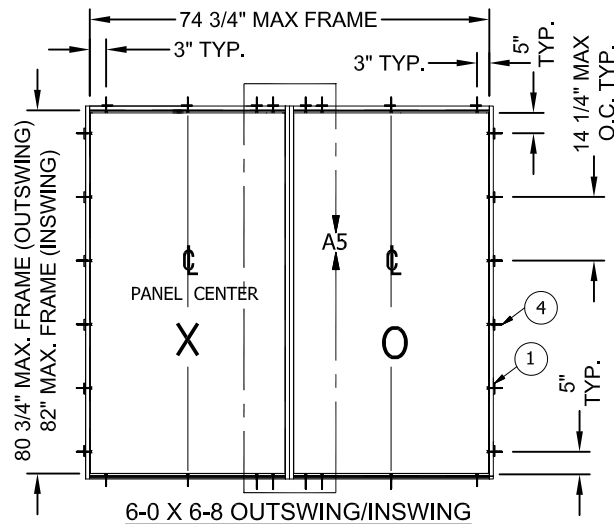
6-0 X 6-8 OUTSWING/INSWING
(30) ANCHOR LOCATIONS
(FROM EDGE OF FRAME)



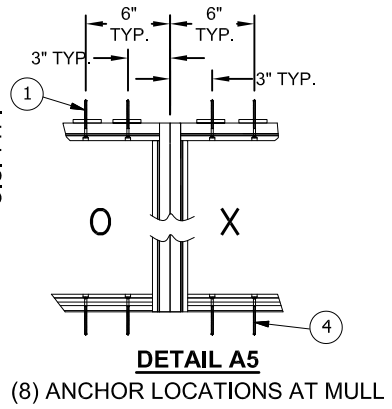
3-0 X 6-8 OUTSWING/INSWING
(18) ANCHOR LOCATIONS
(FROM EDGE OF FRAME)



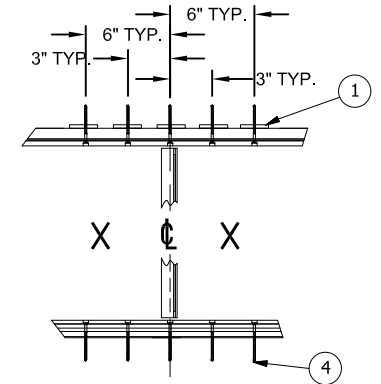
9-0 X 6-8 OUTSWING/INSWING
(38) ANCHOR LOCATIONS
(FROM EDGE OF FRAME)



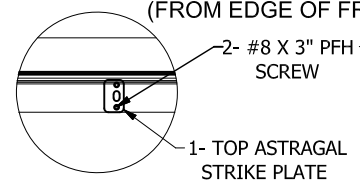
6-0 X 6-8 OUTSWING/INSWING
(28) ANCHOR LOCATIONS
(FROM EDGE OF FRAME)



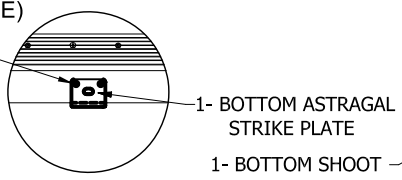
DETAIL A5
(8) ANCHOR LOCATIONS AT MULL



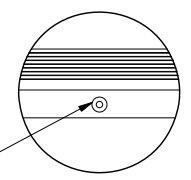
DETAIL B5
(10) ANCHOR LOCATIONS
AT ASTRAGAL



DETAIL C-5
INSWING OR OUTSWING



DETAIL D-5
OUTSWING ONLY



DETAIL D-5
INSWING ONLY

2021.04.21 11:43:24 -04'00'
Joseph A. Reed, P.E.
Texas No. 100777
National Certified Testing Laboratories
5 Leigh Drive, York, PA 17406
(717) 846-1200

JELLOWEN
WINDOWS & DOORS
3737 Lakeport Blvd.
Klamath Falls, OR 97601
Phone: (541) 882-3451
Fax: (541) 850-2609

PRODUCT
**STEEL WOOD EDGE 12-0 X 6-8 FULL LITE
INSWING/OUTSWING IMPACT GLAZING**
PART OR ASSEMBLY
INSWING AND OUTSWING ANCHORING DETAILS

DATE: 10/03/2012
SCALE: NONE
DWG. BY: G.LUBBECKE
CHK. BY: S.SAFFELL
DRAWING No.:
A008273
SHEET 5 OF 5