

PLYCO CORPORATION

SERIES 95EV FLUSH STEEL INSWING DOOR (NON-IMPACT)



PLYCO CORPORATION
 P.O. BOX 386
 500 INDUSTRIAL RD.
 ELKHART LAKE, WI 53020
 PH: (920) 876-3611 FAX: (920) 876-3527

INSTALLATION NOTES:

1. ONE (1) INSTALLATION ANCHOR IS REQUIRED AT EACH ANCHOR LOCATION SHOWN UNLESS OTHERWISE NOTED.
2. THE NUMBER OF INSTALLATION ANCHORS DEPICTED IS THE MINIMUM NUMBER OF ANCHORS TO BE USED FOR PRODUCT INSTALLATION.
3. INSTALL INDIVIDUAL INSTALLATION ANCHORS WITHIN A TOLERANCE OF ±1/2 INCH OF THE DEPICTED LOCATION IN THE ANCHOR LAYOUT DETAIL (I.E., WITHOUT CONSIDERATION OF TOLERANCES). TOLERANCES ARE NOT CUMULATIVE FROM ONE INSTALLATION ANCHOR TO THE NEXT.
4. SHIM AS REQUIRED AT EACH INSTALLATION ANCHOR WITH LOAD BEARING SHIM(S). MAXIMUM ALLOWABLE SHIM STACK TO BE 1/4 INCH. SHIM WHERE SPACE OF 1/16 INCH OR GREATER OCCURS. SHIM(S) SHALL BE CONSTRUCTED OF HIGH DENSITY PLASTIC OR BETTER.
5. FOR INSTALLATION INTO WOOD FRAMING USE **#10 WOOD SCREWS** OF SUFFICIENT LENGTH TO ACHIEVE 1 1/2 INCH MINIMUM EMBEDMENT INTO WOOD SUBSTRATE.
6. FOR INSTALLATION THROUGH 1X BUCK TO CONCRETE/MASONRY, OR DIRECTLY INTO CONCRETE/MASONRY, USE **3/16 INCH DIAMETER ITW TAPCONS** OF SUFFICIENT LENGTH TO ACHIEVE 1 1/4 INCH MINIMUM EMBEDMENT.
7. FOR INSTALLATION INTO STEEL STUD FRAME USE **#10 SELF-DEILLING OR SELF-TAPPING SCREWS** OF SUFFICIENT LENGTH TO ACHIEVE A MINIMUM 3 THREADS PENETRATION BEYOND STEEL STRUCTURE.
8. MINIMUM EMBEDMENT AND EDGE DISTANCE EXCLUDE WALL FINISHES, INCLUDING BUT NOT LIMITED TO STUCCO, FOAM, BRICK VENEER, AND SIDING.
9. INSTALLATION ANCHORS AND ASSOCIATED HARDWARE MUST BE MADE OF CORROSION RESISTANT MATERIAL OR HAVE A CORROSION RESISTANT COATING.
10. FOR HOLLOW BLOCK AND GROUT FILLED BLOCK, DO NOT INSTALL INSTALLATION ANCHORS INTO MORTAR JOINTS. EDGE DISTANCE IS MEASURED FROM FREE EDGE OF BLOCK OR EDGE OF MORTAR JOINT INTO FACE SHELL OF BLOCK.
11. INSTALLATION ANCHORS SHALL BE INSTALLED IN ACCORDANCE WITH ANCHOR MANUFACTURER'S INSTALLATION INSTRUCTIONS, AND ANCHORS SHALL NOT BE USED IN SUBSTRATES WITH STRENGTHS LESS THAN THE MINIMUM STRENGTH SPECIFIED BY THE ANCHOR MANUFACTURER.
12. INSTALLATION ANCHOR CAPACITIES FOR PRODUCTS HEREIN ARE BASED ON SUBSTRATE MATERIALS WITH THE FOLLOWING PROPERTIES:
 - A. WOOD - MINIMUM SPECIFIC GRAVITY OF 0.42.
 - B. CONCRETE -MINIMUM COMPRESSIVE STRENGTH OF 3000 PSI.
 - C. MASONRY - STRENGTH CONFORMANCE TO ASTM C-90.
 - D. STEEL - MINIMUM YIELD STRENGTH OF 33 KSI. MINIMUM WALL THICKNESS OF 48 MILS (18 GAUGE).

GENERAL NOTES:

1. THE PRODUCT SHOWN HEREIN IS DESIGNED AND MANUFACTURED TO COMPLY WITH THE 2018 INTERNATIONAL BUILDING CODE (IBC) AND 2018 INTERNATIONAL RESIDENTIAL CODE (IRC) AND HAS BEEN EVALUATED ACCORDING TO THE FOLLOWING:
 - AAMA/WDMA/CSA 101/I.S.2/A440-17
2. ADEQUACY OF THE EXISTING STRUCTURAL CONCRETE/MASONRY AND 2X FRAMING AS A MAIN WIND FORCE RESISTING SYSTEM CAPABLE OF WITHSTANDING AND TRANSFERRING APPLIED PRODUCT LOADS TO THE FOUNDATION IS THE RESPONSIBILITY OF THE ENGINEER OR ARCHITECT OF RECORD FOR THE PROJECT OF INSTALLATION.
3. 1X AND 2X BUCKS (WHEN USED) SHALL BE DESIGNED AND ANCHORED TO PROPERLY TRANSFER ALL LOADS TO THE STRUCTURE. BUCK DESIGN AND INSTALLATION IS THE RESPONSIBILITY OF THE ENGINEER OR ARCHITECT OF RECORD FOR THE PROJECT OF INSTALLATION.
4. THE INSTALLATION DETAILS DESCRIBED HEREIN ARE GENERIC AND MAY NOT REFLECT ACTUAL CONDITIONS FOR A SPECIFIC SITE. IF SITE CONDITIONS CAUSE INSTALLATION TO DEVIATE FROM THE REQUIREMENTS DETAILED HEREIN, A LICENSED ENGINEER OR ARCHITECT SHALL PREPARE SITE SPECIFIC DOCUMENTS FOR USE WITH THIS DOCUMENT.
5. APPROVED IMPACT PROTECTIVE SYSTEM **IS REQUIRED** ON THIS PRODUCT IN AREAS REQUIRING IMPACT RESISTANCE.
6. FRAME MATERIAL: ALUMINUM 6063-T5 & CS-B STEEL
7. DISSIMILAR METALS INCLUDING FASTENERS THAT MAY COME INTO CONTACT WITH ALUMINUM UNIT FRAMING SHALL BE PROTECTED.
8. ALL EXPOSED STEEL COMPONENTS ARE GALVANIZED AND SHOP PRIMED.

TABLE OF CONTENTS	
SHEET	SHEET DESCRIPTION
1	INSTALLATION & GENERAL NOTES
2	ELEVATION & ANCHOR LAYOUT
3	VERTICAL SECTIONS
4	HORIZONTAL SECTIONS
5	COMPONENTS & BILL OF MATERIALS

DESIGN PRESSURE RATING			
LOCK TYPE	DESIGN PRESSURE - ALL SIZES		MISSILE IMPACT RATING
SINGLE POINT	+55.0 / -55.0 PSF *	W/O WATER INFILTRATION	NON-IMPACT
SINGLE POINT W/ DEAD BOLT	+80.0 / -80.0 PSF *	W/O WATER INFILTRATION	NON-IMPACT

*UNIT SHALL BE INSTALLED AT LOCATION PROTECTED BY OVERHANG SUCH THE OVERHANG RATIO (OH) = OH LENGTH/OH HEIGHT GREATER THAN 1.0 WHERE WATER INFILTRATION IS REQUIRED.

TITLE: SERIES 95EV FLUSH STEEL INSWING DOOR (NON-IMPACT)

INSTALLATION & GENERAL NOTES

PREPARED BY:

BUILDING DROPS, INC.
 398 E. DANIA BEACH BLVD., STE. 338
 DANIA BEACH, FL 33004
 PH: (954)399-8478
 FAX: (954)744-4738
 WEB: www.buildingdrops.com



REMARKS	BY	DATE

THE INSTALLATION DETAILS DESCRIBED HEREIN ARE GENERIC AND MAY NOT REFLECT ACTUAL CONDITIONS FOR A SPECIFIC SITE. IF SITE CONDITIONS CAUSE INSTALLATION TO DEVIATE FROM THE REQUIREMENTS DETAILED HEREIN, A LICENSED ENGINEER OR ARCHITECT SHALL PREPARE SITE SPECIFIC DOCUMENTS FOR USE WITH THIS DOCUMENT.



HERMES F. NORERO, P.E.
 TEXAS P.E. No 118471
 BUILDING DROPS, INC
 398 E. DANIA BEACH BLVD. # 338
 DANIA BEACH, FL 33004
 TBPE FIRM No. 13734

DATE: **02.13.20**
 DWG. BY: **MS** CHK. BY: **HFN**
 SCALE: **NTS**
 DWG. #: **PCO036**
 SHEET:

1

OF 5

3/16/2020 9:18 AM
 s:\projects\plyco corp\tdi-19-1128 -tdi-submittal -series 20ev and 95ev gld and opa doors\dwg\pc0036\pc0036.dwg

TITLE: SERIES 95EV FLUSH STEEL
 INSWING DOOR (NON-IMPACT)
 ELEVATION &
 ANCHOR LAYOUT

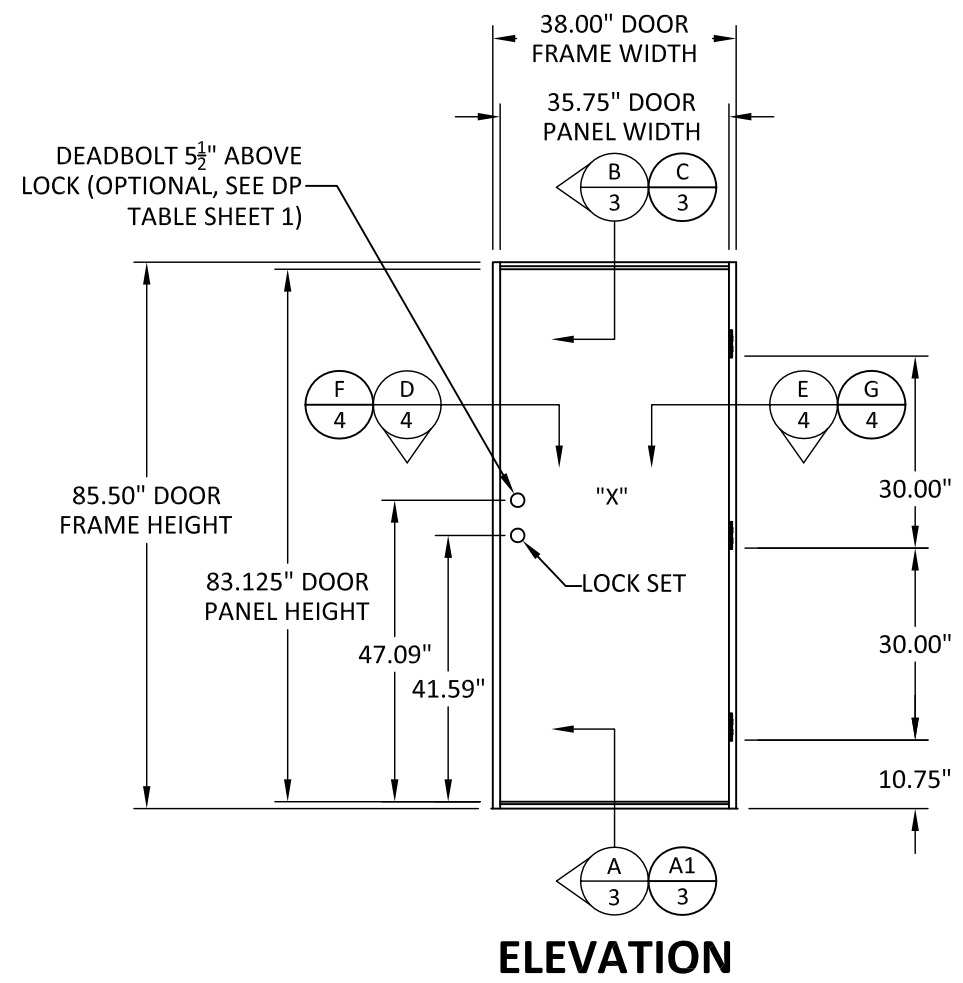
PREPARED BY:
BUILDING DROPS, INC.
 398 E. DANIA BEACH BLVD., STE. 338
 DANIA BEACH, FL 33004
 PH: (954) 399-8478
 FAX: (954) 744-4738
 WEB: www.buildingdrops.com

NOTE:
FOR WOOD & STEEL SUBSTRATES: MINIMUM OF SEVEN (7) TOTAL ANCHORS REQUIRED PER JAMB. NO ANCHORS AT HEAD OR SILL.
FOR CONCRETE/MASONRY SUBSTRATES: MINIMUM OF SIX (6) TOTAL ANCHORS REQUIRED AT LOCK JAMB & SEVEN (7) ANCHORS AT HINGE JAMB. NO ANCHORS AT HEAD OR SILL.

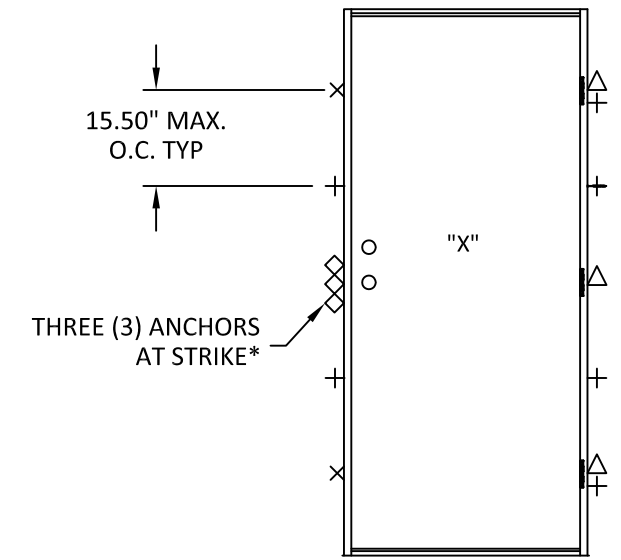
WHEN DEAD BOLT IS USED TWO (2) ADDITIONAL ANCHORS ARE REQUIRED AT DEAD BOLT STRIKE PLATE.

SEE SHEET 4 FOR SPECIFIC ANCHOR LOCATIONS.

*FOR MASONRY/CONCRETE INSTALLATIONS USE ONLY TWO (2) ANCHORS THROUGH STRIKE PLATE



ELEVATION



ANCHOR LAYOUT

- LEGEND:**
- × ANCHOR THROUGH INNER FRAME
 - ◇ ANCHOR THROUGH STRIKE PLATE (WHERE APPLICABLE)
 - + ANCHOR THROUGH OUTER FRAME
 - △ ANCHOR THROUGH HINGE

REMARKS	BY	DATE

THE INSTALLATION DETAILS DESCRIBED HEREIN ARE GENERIC AND MAY NOT REFLECT ACTUAL CONDITIONS FOR A SPECIFIC SITE. IF SITE CONDITIONS CAUSE INSTALLATION TO DEVIATE FROM THE REQUIREMENTS DETAILED HEREIN, A LICENSED ENGINEER OR ARCHITECT SHALL PREPARE SITE SPECIFIC DOCUMENTS FOR USE WITH THIS DOCUMENT.



HERMES F. NORERO, P.E.
 TEXAS P.E. No 118471
 BUILDING DROPS, INC
 398 E. DANIA BEACH BLVD. # 338
 DANIA BEACH, FL 33004
 TBPE FIRM No. 13734

DATE:	02.13.20	
DWG. BY:	MS	CHK. BY: HFN
SCALE:	NTS	
DWG. #:	PCO036	
SHEET:	2	

3/16/2020 9:19 AM s:\projects\plyco corp\tdi-19-1128 -tdi-submittal-series 20ev and 95ev gltd and opa doors\dws\pco036\pco036.dwg

TITLE: SERIES 95EV FLUSH STEEL
 INSWING DOOR (NON-IMPACT)

VERTICAL SECTIONS

PREPARED BY:
BUILDING DROPS, INC.
 398 E. DANIA BEACH BLVD., STE. 338
 DANIA BEACH, FL 33004
 PH: (954) 399-8478
 FAX: (954) 744-4738
 WEB: www.buildingdrops.com

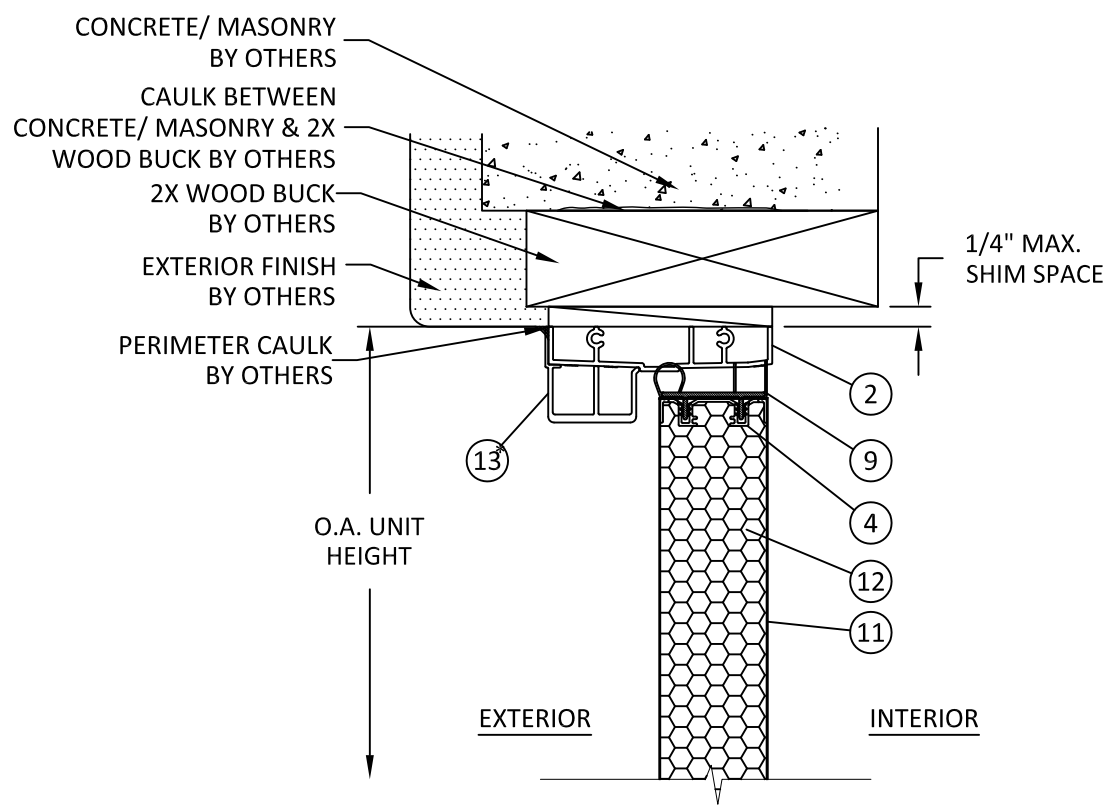
REMARKS	BY	DATE

THE INSTALLATION DETAILS DESCRIBED HEREIN ARE GENERIC AND MAY NOT REFLECT ACTUAL CONDITIONS FOR A SPECIFIC SITE. IF SITE CONDITIONS CAUSE INSTALLATION TO DEVIATE FROM THE REQUIREMENTS DETAILED HEREIN, A LICENSED ENGINEER OR ARCHITECT SHALL PREPARE SITE SPECIFIC DOCUMENTS FOR USE WITH THIS DOCUMENT.

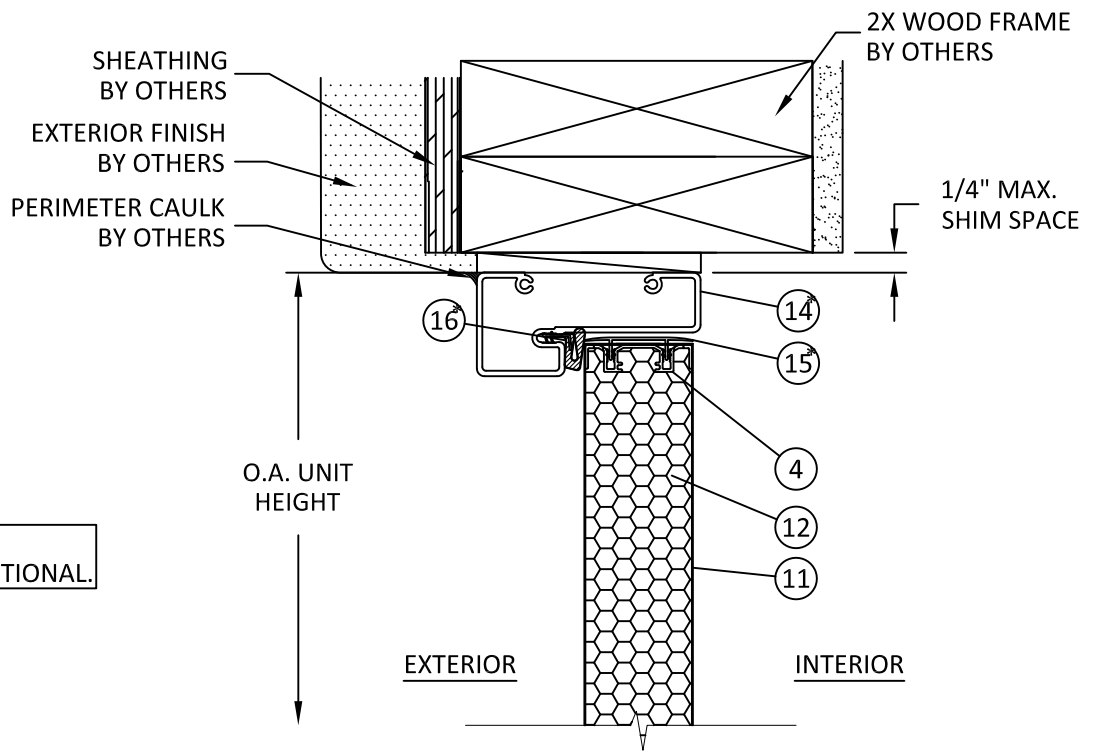


HERMES F. NORERO, P.E.
 TEXAS P.E. No. 118471
 BUILDING DROPS, INC
 398 E. DANIA BEACH BLVD. # 338
 DANIA BEACH, FL 33004
 TBPE FIRM No. 13734

DATE:	02.13.20	
DWG. BY:	MS	CHK. BY: HFN
SCALE:	NTS	
DWG. #:	PCO036	
SHEET:	3	

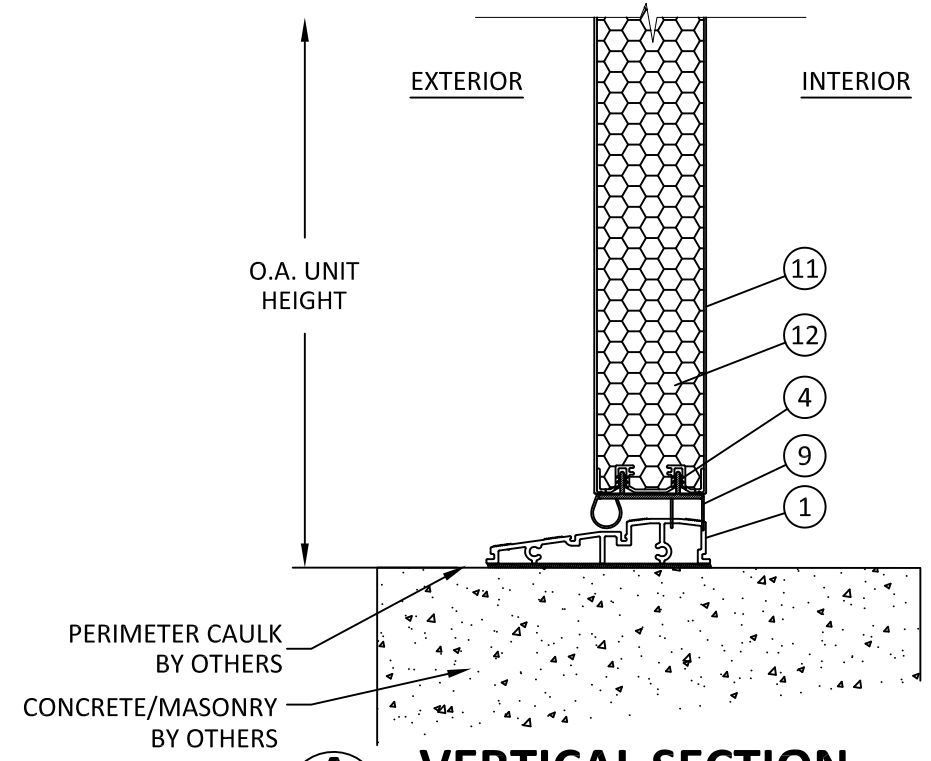


B
3
VERTICAL SECTION
HEAD - OPTIONAL STOP
2X WOOD BUCK

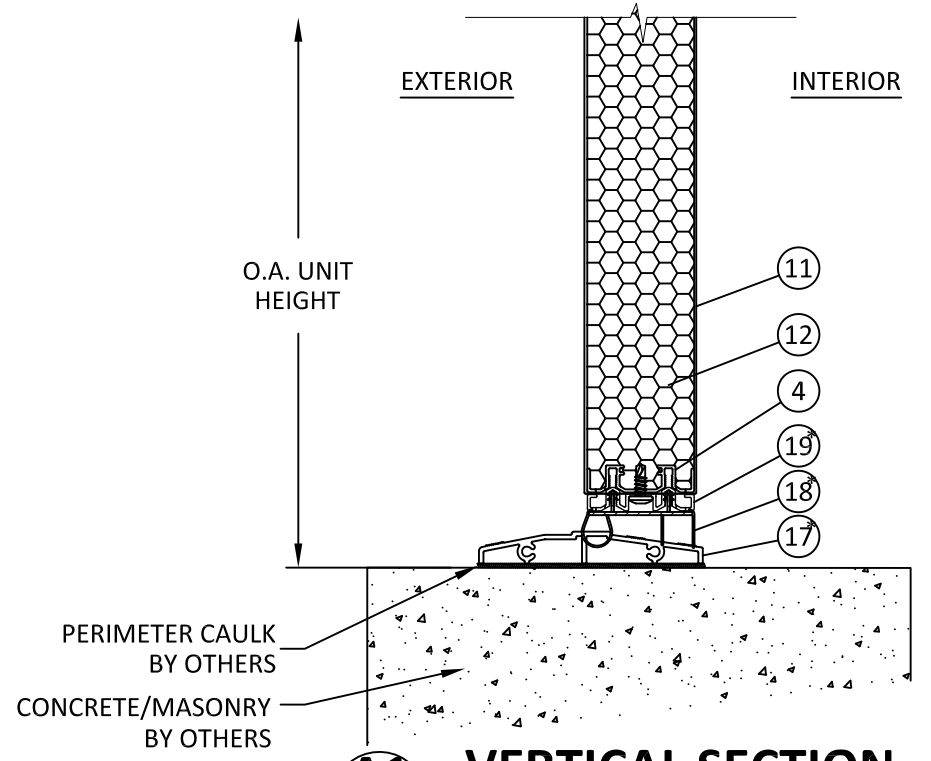


C
3
VERTICAL SECTION
HEAD - OPTIONAL HEADER
2X WOOD FRAME

NOTE:
 * COMPONENTS ARE OPTIONAL.



A
3
VERTICAL SECTION
SILL - CONCRETE/MASONRY



A1
3
VERTICAL SECTION
SILL - ADA THRESHOLD (OPTIONAL)

3/16/2020 9:19 AM

s:\projects\plyco corp\tdi-19-1128 -tdi submittal - series 20ev and 95ev gld and opa doors\dwg\pco036\pco036.dwg

TITLE: SERIES 95EV FLUSH STEEL
 INSWING DOOR (NON-IMPACT)
 HORIZONTAL SECTIONS

PREPARED BY:
BUILDING DROPS, INC.
 398 E. DANIA BEACH BLVD., STE. 338
 DANIA BEACH, FL 33004
 PH: (954) 399-8478
 FAX: (954) 744-4738
 WEB: www.buildingdrops.com

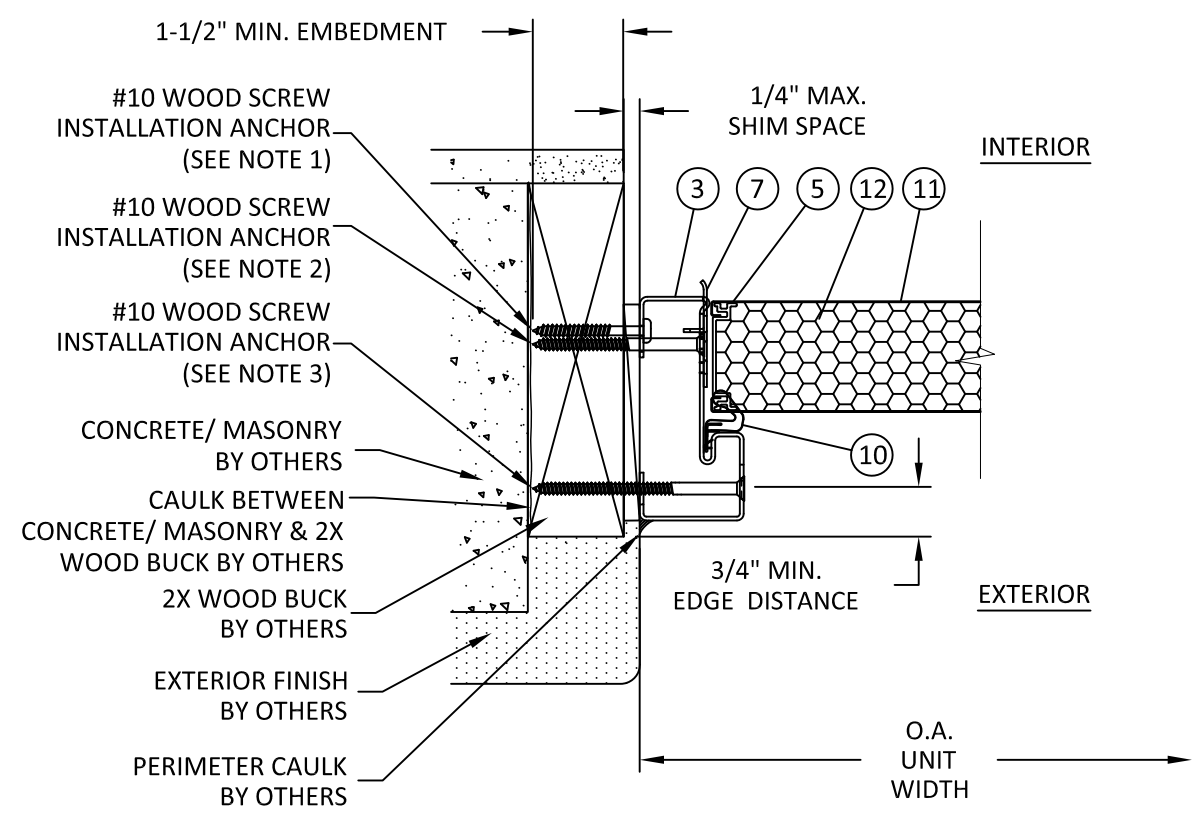
REMARKS	BY	DATE

THE INSTALLATION DETAILS DESCRIBED HEREIN ARE GENERIC AND MAY NOT REFLECT ACTUAL CONDITIONS FOR A SPECIFIC SITE. IF SITE CONDITIONS CAUSE INSTALLATION TO DEVIATE FROM THE REQUIREMENTS DETAILED HEREIN, A LICENSED ENGINEER OR ARCHITECT SHALL PREPARE SITE SPECIFIC DOCUMENTS FOR USE WITH THIS DOCUMENT.

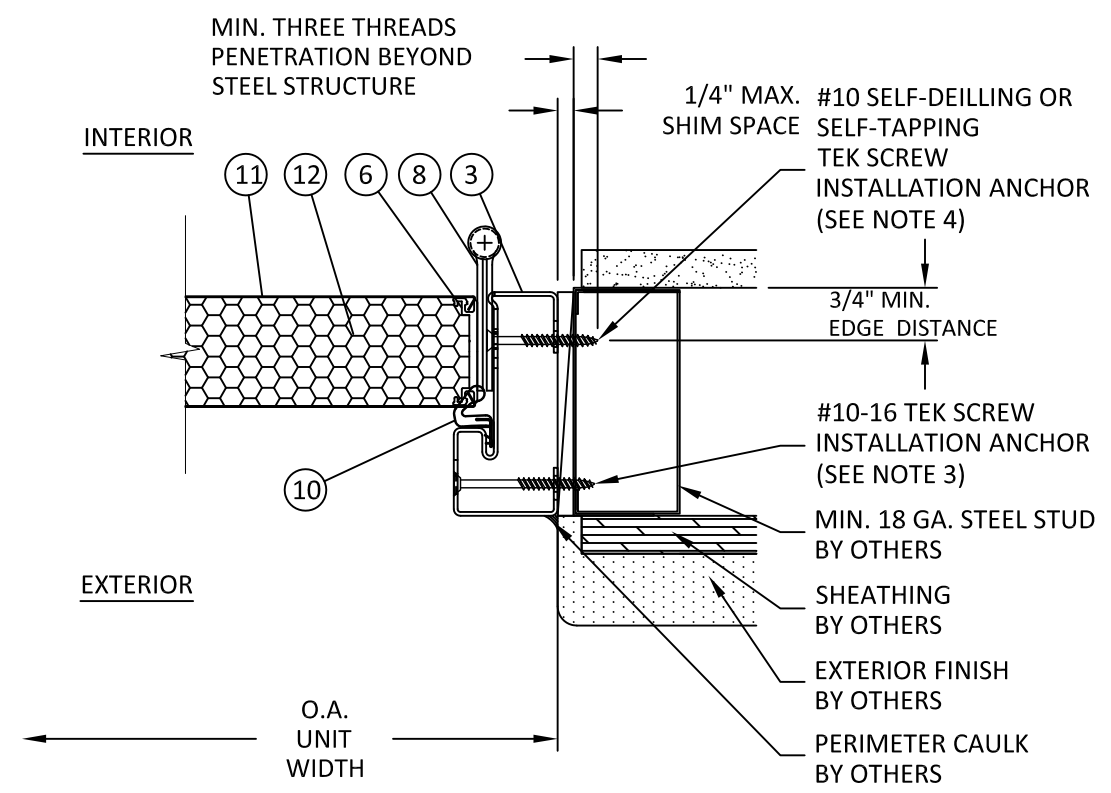


HERMES F. NORERO, P.E.
 TEXAS P.E. No. 118471
 BUILDING DROPS, INC
 398 E. DANIA BEACH BLVD., # 338
 DANIA BEACH, FL 33004
 TBPE FIRM No. 13734

DATE:	02.13.20	
DWG. BY:	MS	CHK. BY: HFN
SCALE:	NTS	
DWG. #:	PCO036	
SHEET:	4	

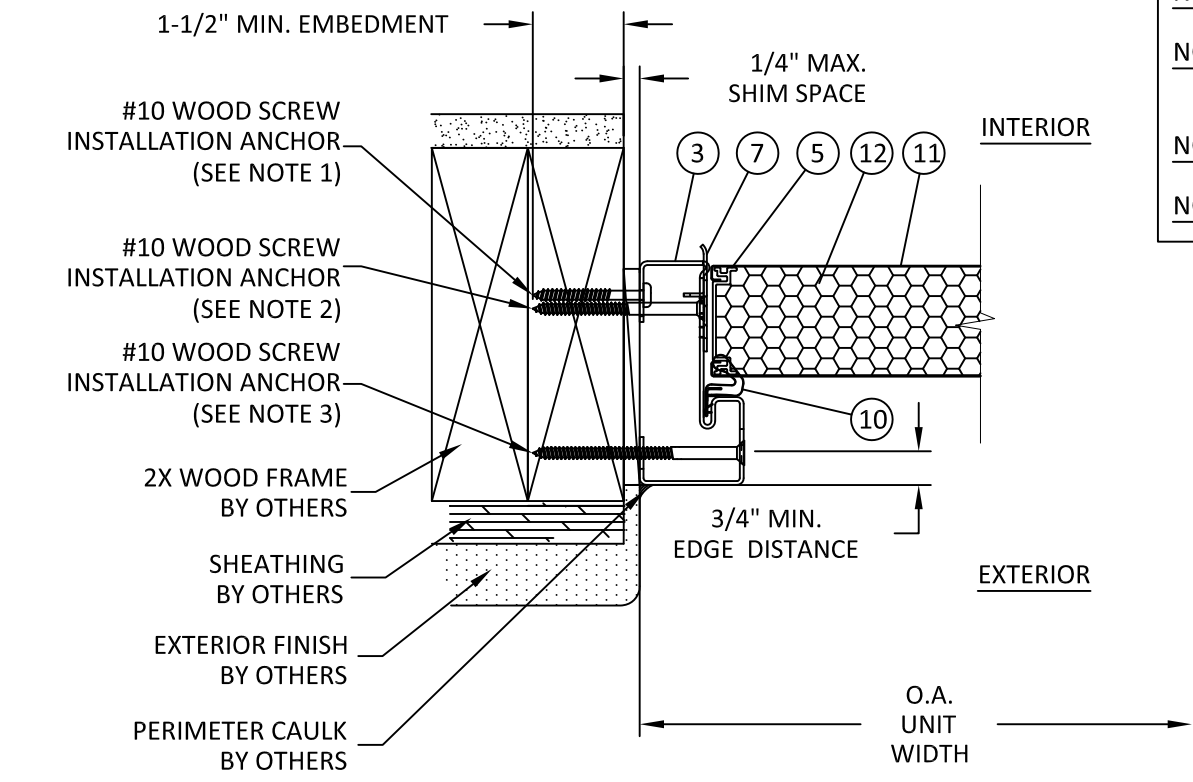


D
4
HORIZONTAL SECTION
 JAMB - 2X WOOD BUCK, TYP.

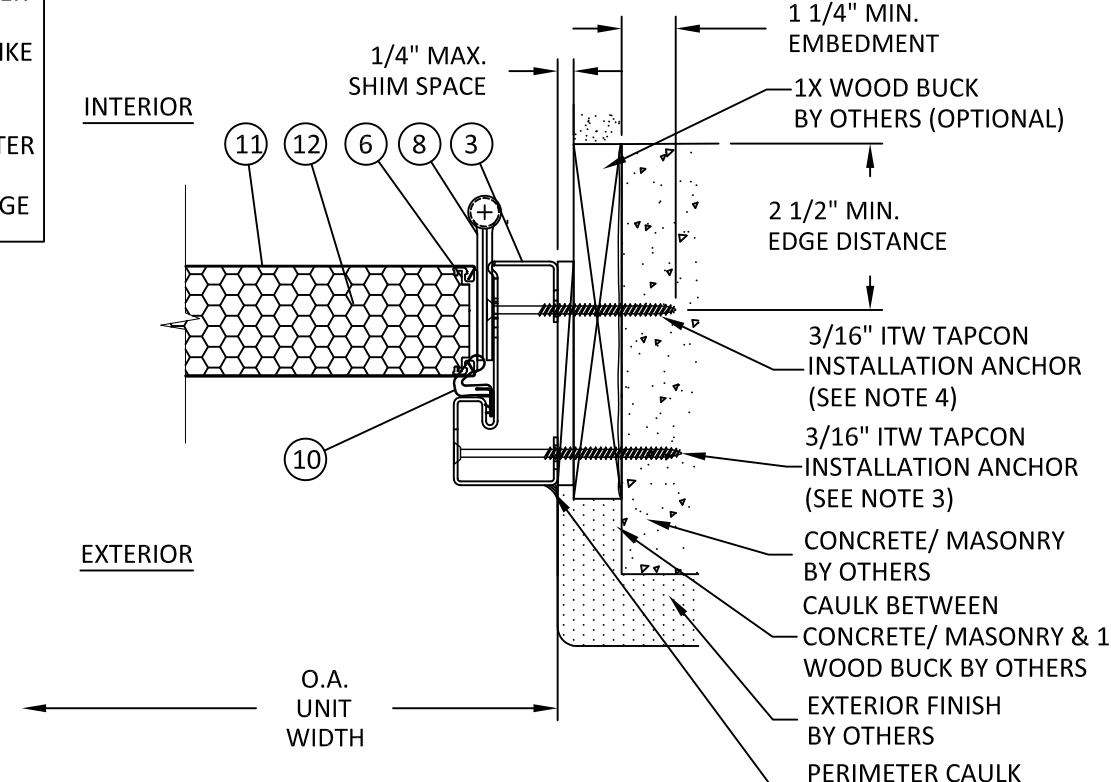


E
4
HORIZONTAL SECTION
 JAMB - STEEL STUD, TYP.

ANCHOR NOTES:
 NOTE 1: ANCHOR THROUGH INNER FRAME
 NOTE 2: ANCHOR THROUGH STRIKE PLATE (WHERE APPLICABLE)
 NOTE 3: ANCHOR THROUGH OUTER FRAME
 NOTE 4: ANCHOR THROUGH HINGE



F
4
HORIZONTAL SECTION
 JAMB - 2X WOOD FRAME, TYP.



G
4
HORIZONTAL SECTION
 JAMB - MASONRY/CONCRETE, TYP.

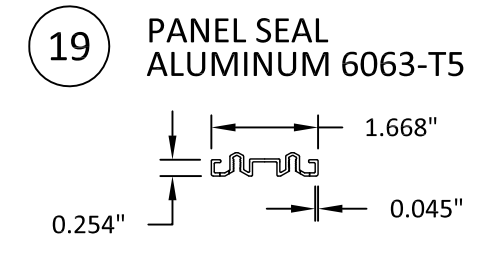
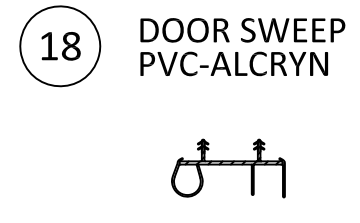
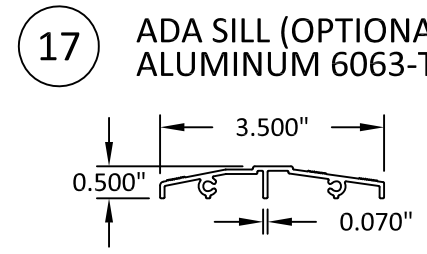
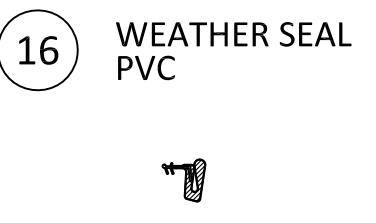
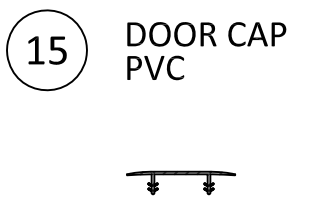
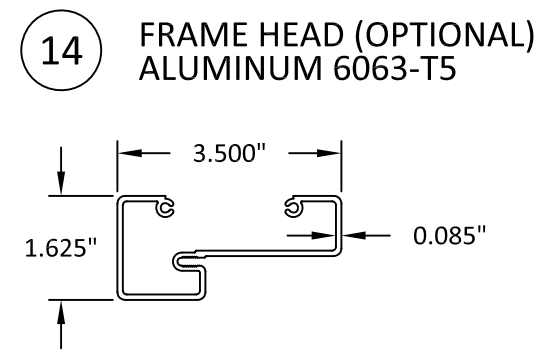
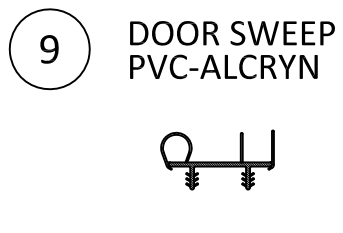
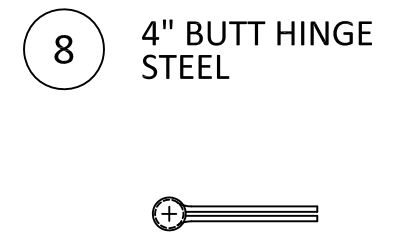
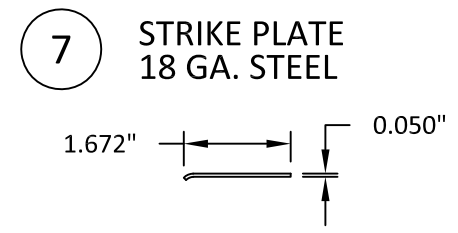
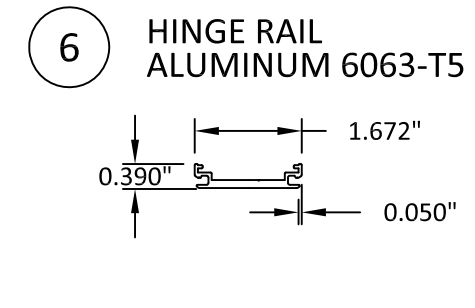
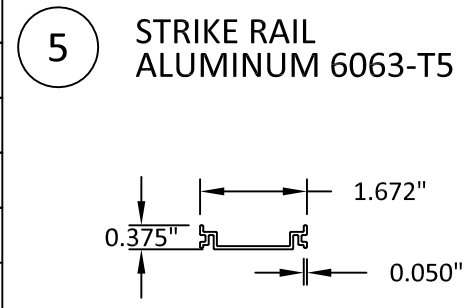
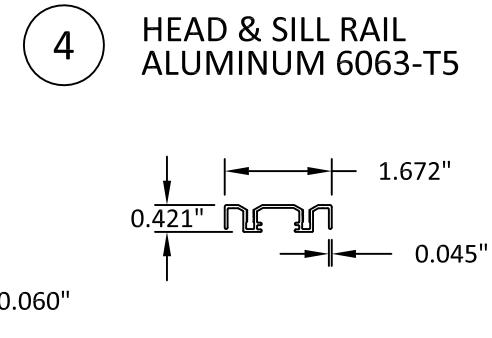
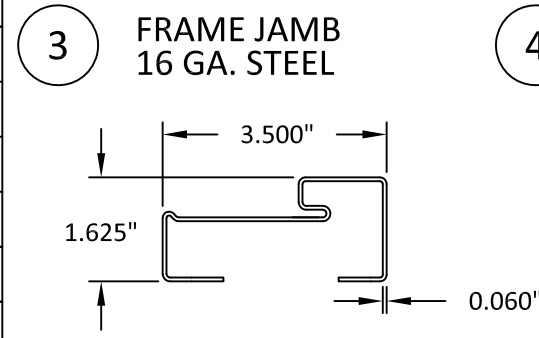
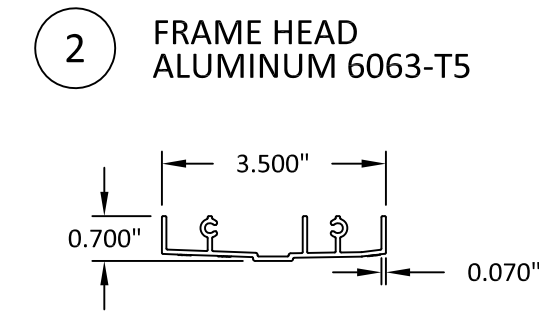
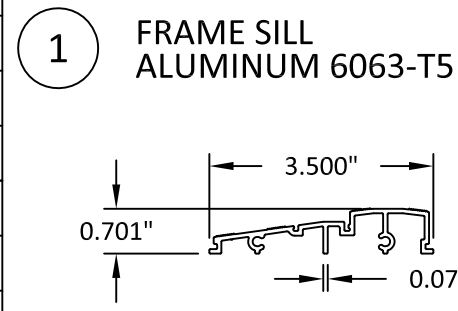
3/16/2020 9:19 AM

s:\projects\plyco corp\tdi-19-1128 -tdi submittal - series 20ev and 95ev gld and opa doors\dwg\pco036.pco036.dwg

BILL OF MATERIALS

ITEM NO.	DESCRIPTION	PARTS NUMBERS	MATERIAL	MANUFACTURER
1	FRAME SILL	1647	6063-T5	MODERN DOOR
2	FRAME HEAD	1554	6063-T5	MODERN DOOR
3	FRAME JAMB	1539	STEEL	MODERN DOOR
4	HEAD & SILL RAIL	1838-1A	6063-T5	MODERN DOOR
5	STRIKE RAIL	1839	6063-T5	MODERN DOOR
6	HINGE RAIL	1840-B	6063-T5	MODERN DOOR
7	STRIKE PLATE	---	STEEL	MODERN DOOR
8	4" BUTT HINGE	---	STEEL	MODERN DOOR
9	DOOR SWEEP	---	PVC-ALCRYN	MODERN DOOR
10	WEATHER STRIPPING	---	FOAM/Q-LON	SCHLAGE
11	DOOR SKIN	---	0.015" STEEL	MODERN DOOR
12	PANEL CORE	---	POLYURETHANE	MODERN DOOR
13	STOP PART (OPTIONAL)	---	6063-T5	MODERN DOOR
14	FRAME HEAD (OPTIONAL)	1880	6063-T5	MODERN DOOR
15	DOOR CAP	---	PVC	MODERN DOOR
16	WEATHER SEAL	9650	PVC	MODERN DOOR
17	ADA SILL (OPTIONAL)	1572	6063-T5	MODERN DOOR
18	DOOR SWEEP	1852	PVC-ALCRYN	MODERN DOOR
19	PANEL SEAL	1929	6063-T5	MODERN DOOR

NOTE: ALL EXPOSED STEEL COMPONENTS ARE GALVANIZED AND SHOP PRIMED.



PLYCO CORPORATION
P.O. BOX 386
500 INDUSTRIAL RD.
ELKHART LAKE, WI 53020
PH: (920) 876-3611 FAX: (920) 876-3527

TITLE: SERIES 95EV FLUSH STEEL
INSWING DOOR (NON-IMPACT)
COMPONENTS &
BILL OF MATERIALS

PREPARED BY:
BUILDING DROPS, INC.
398 E. DANIA BEACH BLVD., STE. 338
DANIA BEACH, FL 33004
PH: (954) 399-8478
FAX: (954) 744-4738
WEB: www.buildingdrops.com



REMARKS	BY	DATE

THE INSTALLATION DETAILS DESCRIBED HEREIN ARE GENERIC AND MAY NOT REFLECT ACTUAL CONDITIONS FOR A SPECIFIC SITE. IF SITE CONDITIONS CAUSE INSTALLATION TO DEVIATE FROM THE REQUIREMENTS DETAILED HEREIN, A LICENSED ENGINEER OR ARCHITECT SHALL PREPARE SITE SPECIFIC DOCUMENTS FOR USE WITH THIS DOCUMENT.



HERMES F. NORERO, P.E.
TEXAS P.E. No. 118471
BUILDING DROPS, INC
398 E. DANIA BEACH BLVD. # 338
DANIA BEACH, FL 33004
TBPE FIRM No. 13734

DATE: 02.13.20	
DWG. BY: MS	CHK. BY: HFN
SCALE: NTS	
DWG. #: PCO036	
SHEET:	

3/16/2020 9:19 AM
s:\projects\plyco\corp\tdi-19-1128-tdi-submittal-series 20ev and 95ev gld and opa doors\dwgs\pco036\pco036.dwg