

REVISIONS			
REV	DESCRIPTION	DATE	APPROVED
A	REVISED PER NEW CODE	02/11/2021	R.L.

NOTES:

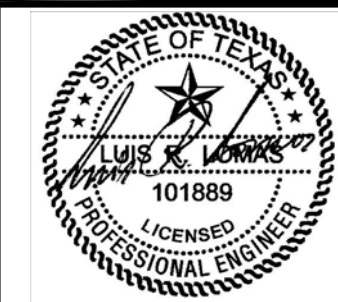
- THE PRODUCT SHOWN HEREIN IS DESIGNED AND MANUFACTURED TO COMPLY WITH REQUIREMENTS OF THE 2018 IBC AND THE 2018 RC.
- WOOD FRAMING AND MASONRY OPENING TO BE DESIGNED AND ANCHORED TO PROPERLY TRANSFER ALL LOADS TO STRUCTURE. FRAMING AND MASONRY OPENING IS THE RESPONSIBILITY OF THE ARCHITECT OR ENGINEER OF RECORD.
- 1X BUCK OVER MASONRY/CONCRETE IS OPTIONAL.
- WHERE SHIM OR BUCK THICKNESS IS LESS THAN 1-1/2" UNITS MUST BE ANCHORED THROUGH THE FRAME IN ACCORDANCE WITH MANUFACTURER'S PUBLISHED INSTALLATION INSTRUCTIONS. ANCHORS SHALL BE SECURELY FASTENED DIRECTLY INTO MASONRY, CONCRETE OR OTHER STRUCTURAL SUBSTRATE MATERIAL.
- WHERE WOOD BUCK THICKNESS IS 1-1/2" OR GREATER, BUCK SHALL BE SECURELY FASTENED TO MASONRY, CONCRETE OR OTHER STRUCTURAL SUBSTRATE. UNITS MAY BE ANCHORED THROUGH FRAME TO SECURED WOOD BUCK IN ACCORDANCE WITH MANUFACTURER'S PUBLISHED INSTALLATION INSTRUCTIONS.
- WHERE 1X BUCK IS NOT USED DISSIMILAR MATERIALS MUST BE SEPARATED WITH APPROVED COATING OR MEMBRANE. SELECTION OF COATING OR MEMBRANE IS THE RESPONSIBILITY OF THE ARCHITECT OR ENGINEER OF RECORD.
- BUCKS SHALL EXTEND BEYOND UNIT FRAME INTERIOR FACE SO THAT FULL FRAME SUPPORT IS PROVIDED.
- SHIM AS REQUIRED AT EACH ANCHOR LOCATION WITH LOAD BEARING SHIM. SHIM WHERE SPACE OF 1/16" OR GREATER OCCURS. MAXIMUM ALLOWABLE SHIM STACK TO BE 1/4".
- SHIMS SHALL BE LOCATED, APPLIED AND MADE FROM MATERIALS AND THICKNESS CAPABLE OF SUSTAINING APPLICABLE LOADS.
- WIND LOAD DURATION FACTOR Cd=1.6 WAS USED FOR WOOD ANCHOR CALCULATIONS.
- FRAME JAMB AND HEAD MATERIAL: CO-EXTRUDED PVC FOAM 1 1/2" THICK.
- FRAME SILL MATERIAL: CO-EXTRUDED PVC FOAM 2" THICK WITH ALUMINUM CLADDING .063" THICK.
- DOOR PANEL AND SIDELITE MATERIAL: .075" THICK FIBERGLASS SKIN WITH PVC FOAM TOP AND BOTTOM RAILS, AND PVC FOAM VERTICAL STILES WITH PINE REINFORCEMENTS AND POLYURETHANE FOAM CORE.
- UNITS MUST BE GLAZED PER ASTM E1300, WITH SAFETY GLAZING.

- APPROVED IMPACT PROTECTIVE SYSTEM IS REQUIRED FOR THIS PRODUCT IN WIND BORNE DEBRIS REGIONS.
- FOR ANCHORING THROUGH FRAME INTO WOOD FRAMING OR 2X BUCK USE #10 WOOD SCREWS WITH SUFFICIENT LENGTH TO ACHIEVE A 1 1/4" MINIMUM EMBEDMENT INTO SUBSTRATE. LOCATE ANCHORS AS SHOWN IN ELEVATIONS AND INSTALLATION DETAILS.
- FOR ANCHORING THROUGH FRAME INTO MASONRY/CONCRETE USE 3/16" TAPCON WITH SUFFICIENT LENGTH TO ACHIEVE A 1 1/4" MINIMUM EMBEDMENT INTO SUBSTRATE WITH 2" MINIMUM EDGE DISTANCE. LOCATE ANCHORS AS SHOWN IN ELEVATIONS AND INSTALLATION DETAILS.
- FOR ANCHORING THROUGH FRAME INTO METAL STRUCTURE USE #10 SMS OR SELF DRILLING SCREWS WITH SUFFICIENT LENGTH TO ACHIEVE 3 THREADS MINIMUM BEYOND STRUCTURE INTERIOR WALL. LOCATE ANCHORS AS SHOWN IN ELEVATIONS AND INSTALLATION DETAILS.
- ALL FASTENERS TO BE CORROSION RESISTANT.
- INSTALLATION ANCHORS SHALL BE INSTALLED IN ACCORDANCE WITH ANCHOR MANUFACTURER'S INSTALLATION INSTRUCTIONS AND ANCHORS SHALL NOT BE USED IN SUBSTRATES WITH STRENGTHS LESS THAN THE MINIMUM STRENGTH SPECIFIED BELOW:
 - WOOD: MINIMUM SPECIFIC GRAVITY OF G=0.42
 - CONCRETE: MINIMUM COMPRESSIVE STRENGTH OF 2,000 PSI.
 - MASONRY: HOLLOW/FILLED BLOCK PER ASTM C90 WITH Fm=2,000PSI MINIMUM.
 - METAL STRUCTURE: STEEL 18GA (.048") FY=33KSI/FU=52KSI OR ALUMINUM 6063-T5 FU=30KSI .125" THICK MINIMUM
- APPROVED CONFIGURATIONS: O, X, O/X, XX, O/X/O, XX/O, O/XX AND O/XX/O. SEE SHEET 3.
- HINGES LOCATED AT 8 3/4", 39 1/2", AND 71 3/8" FROM TOP OF PANEL.

TABLE OF CONTENTS	
SHEET NO.	DESCRIPTION
1	NOTES
2	ELEVATION
3	APPROVED CONFIGURATIONS
4 - 5	ANCHORING LAYOUTS
6 - 12	INSTALLATION DETAILS
13	COMPONENTS

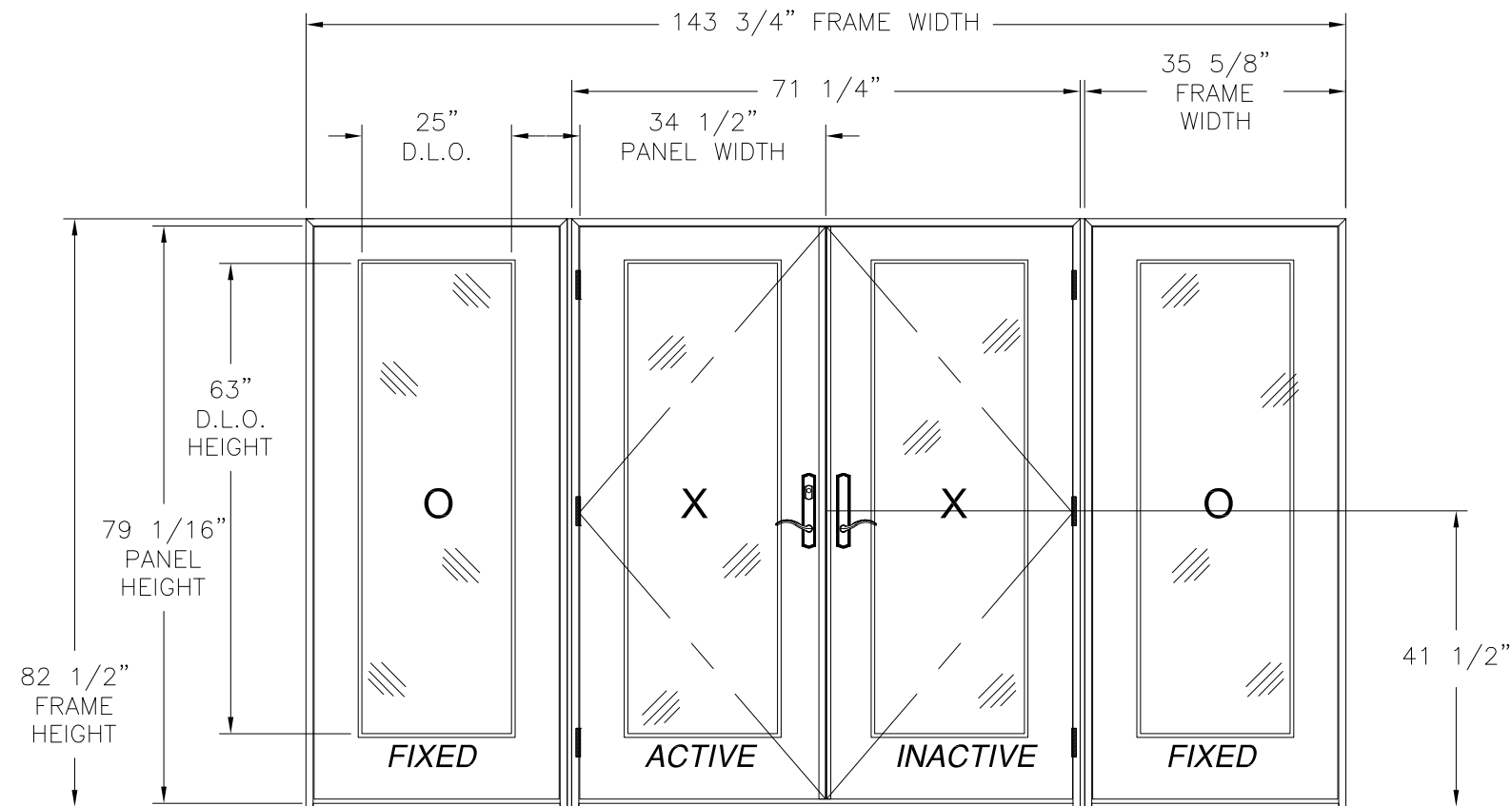
NAN YA PLASTICS CORP. USA 8989 NORTH LOOP EAST HOUSTON, TX 77029		
IN-SWING ENTRANCE DOOR W/SIDELITES (SLPS) FIBERGLASS NON-IMPACT GLAZED NOTES		
DRAWN: A.R.	DWG NO. 08-03408	REV A
SCALE NTS	DATE 04/04/19	SHEET 1 OF 13
L. ROBERTO LOMAS P.E. 1432 WOODFORD RD LEWISVILLE, NC 27023 434-688-0609 rllomas@lrlomaspe.com		

SIGNED: 03/31/2021



Luis R. Lomas P.E.
TX No.: 101889

REVISIONS			
REV	DESCRIPTION	DATE	APPROVED
A	REVISED PER NEW CODE	02/11/2021	R.L.



**IN-SWING ENTRANCE DOOR
DOUBLE DOOR W/ SIDELITES (SLPS)
EXTERIOR VIEW**

DESIGN PRESSURE RATING	IMPACT RATING
±40.0PSF	NONE

SIGNED: 03/31/2021

NAN YA PLASTICS CORP. USA
8989 NORTH LOOP EAST
HOUSTON, TX 77029

IN-SWING ENTRANCE DOOR W/SIDELITES (SLPS)
FIBERGLASS NON-IMPACT GLAZED
ELEVATION

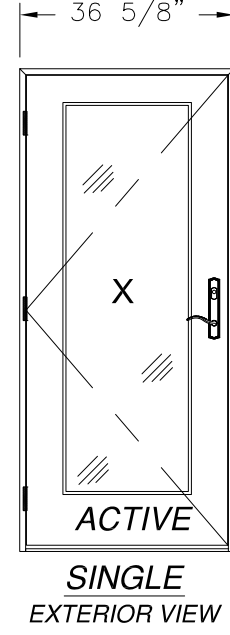
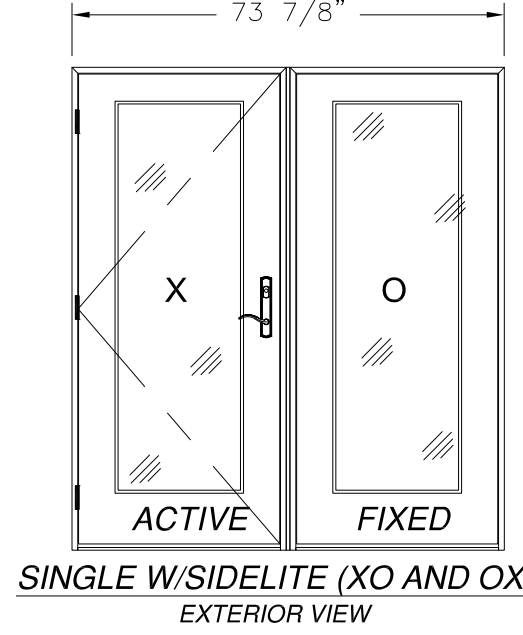
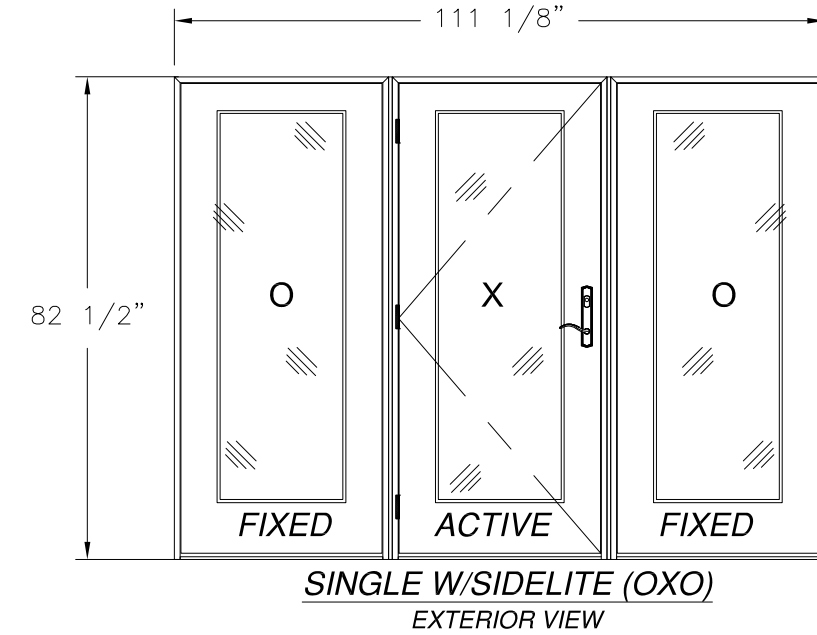
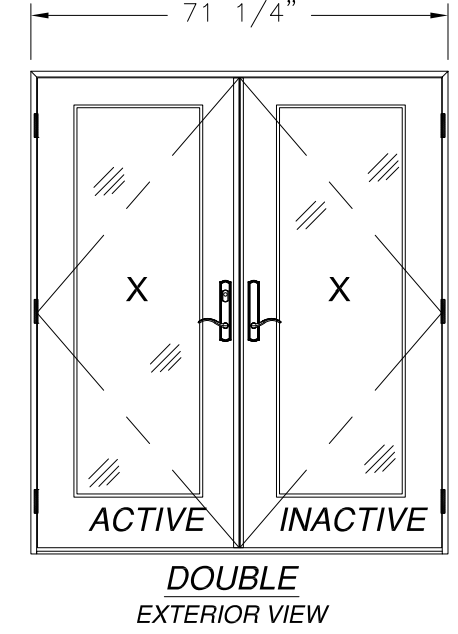
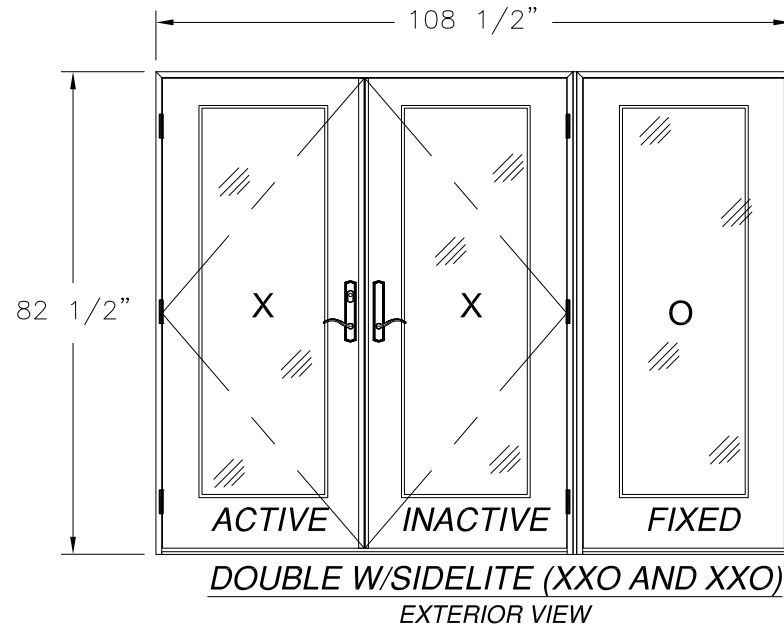
DRAWN: A.R.	DWG NO. 08-03408	REV A
SCALE NTS	DATE 04/04/19	SHEET 2 OF 13

L. ROBERTO LOMAS P.E.
1432 WOODFORD RD LEWISVILLE, NC 27023
434-688-0609 rllomas@lrlomaspe.com



Luis R. Lomas P.E.
TX No.: 101889

REVISIONS			
REV	DESCRIPTION	DATE	APPROVED
A	REVISED PER NEW CODE	02/11/2021	R.L.



HARDWARE SCHEDULE	
A.	2 POINT LOCK BY NINGBO MICOTA (INACTIVE PANEL)
B.	3 POINT LOCK BY NINGBO MICOTA (ACTIVE PANEL)
C.	(4) 4"x4" BUTT HINGES BY WENZHOU LONGTAI (PER PANEL)
D.	ALUMINUM & PVC FOAM ASTRAGAL BY NAN YA PLASTICS
E.	ALUMINUM & PVC FOAM MULLION BY NAN YA PLASTICS

NOTE:
ALL APPROVED CONFIGURATIONS ARE SHOWN AS LEFT HAND ACTIVE, RIGHT HAND ACTIVE IS ALSO APPROVED.

NAN YA PLASTICS CORP. USA
8989 NORTH LOOP EAST
HOUSTON, TX 77029

IN-SWING ENTRANCE DOOR W/SIDELITES (SLPS)
FIBERGLASS NON-IMPACT GLAZED
ADDITIONAL CONFIGURATIONS AND HARDWARE

DRAWN: A.R.	DWG NO. 08-03408	REV A
SCALE NTS	DATE 04/04/19	SHEET 3 OF 13

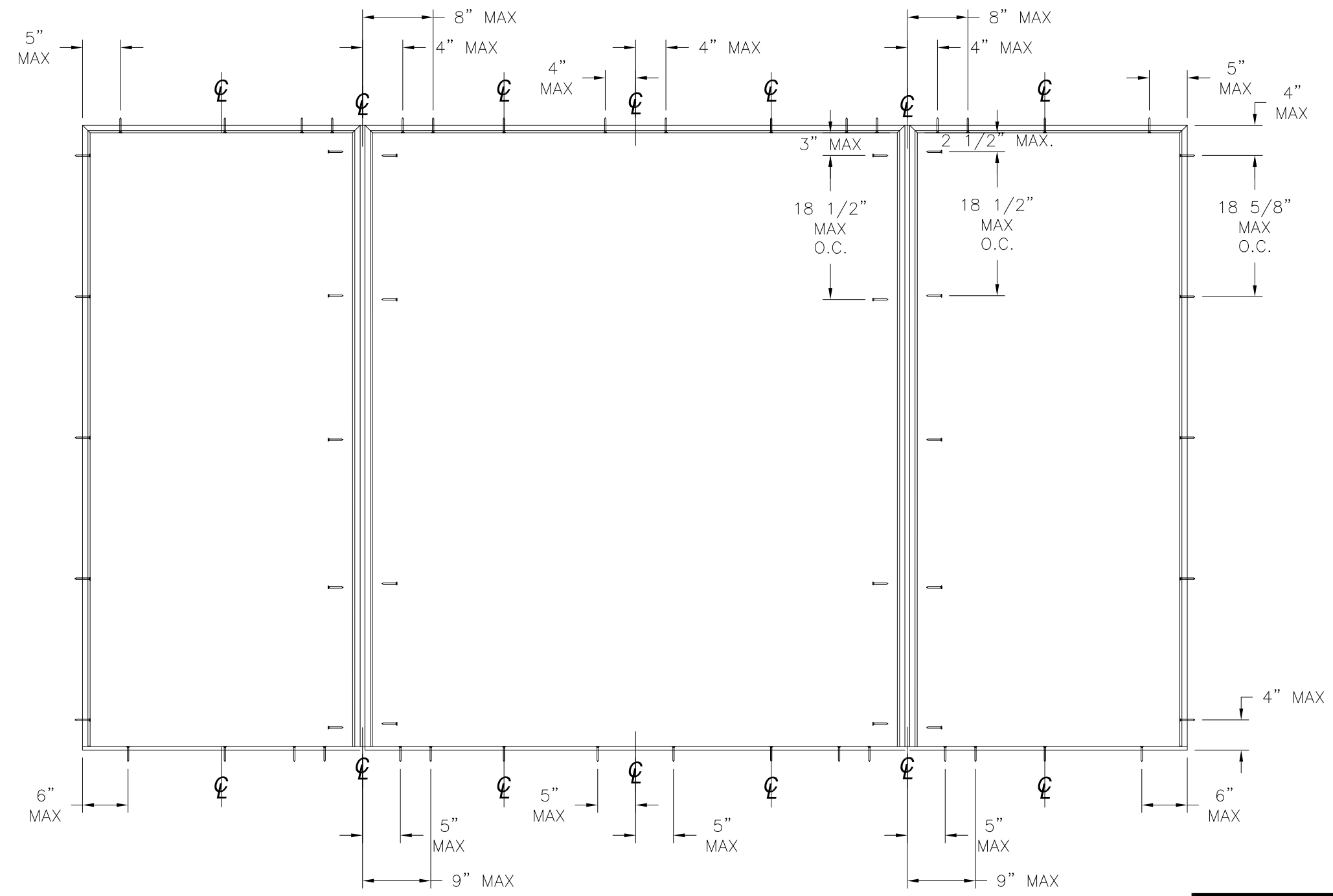
L. ROBERTO LOMAS P.E.
1432 WOODFORD RD LEWISVILLE, NC 27023
434-688-0609 rllomas@lrlomaspe.com

SIGNED: 03/31/2021



Luis R. Lomas P.E.
TX No.: 101889

REVISIONS			
REV	DESCRIPTION	DATE	APPROVED
A	ANCHORING NOTES: REVISED PER NEW CODE	02/11/2021	R.L.



ANCHORING LAYOUT FOR OXXO

SIGNED: 03/31/2021

NAN YA PLASTICS CORP. USA
 8989 NORTH LOOP EAST
 HOUSTON, TX 77029

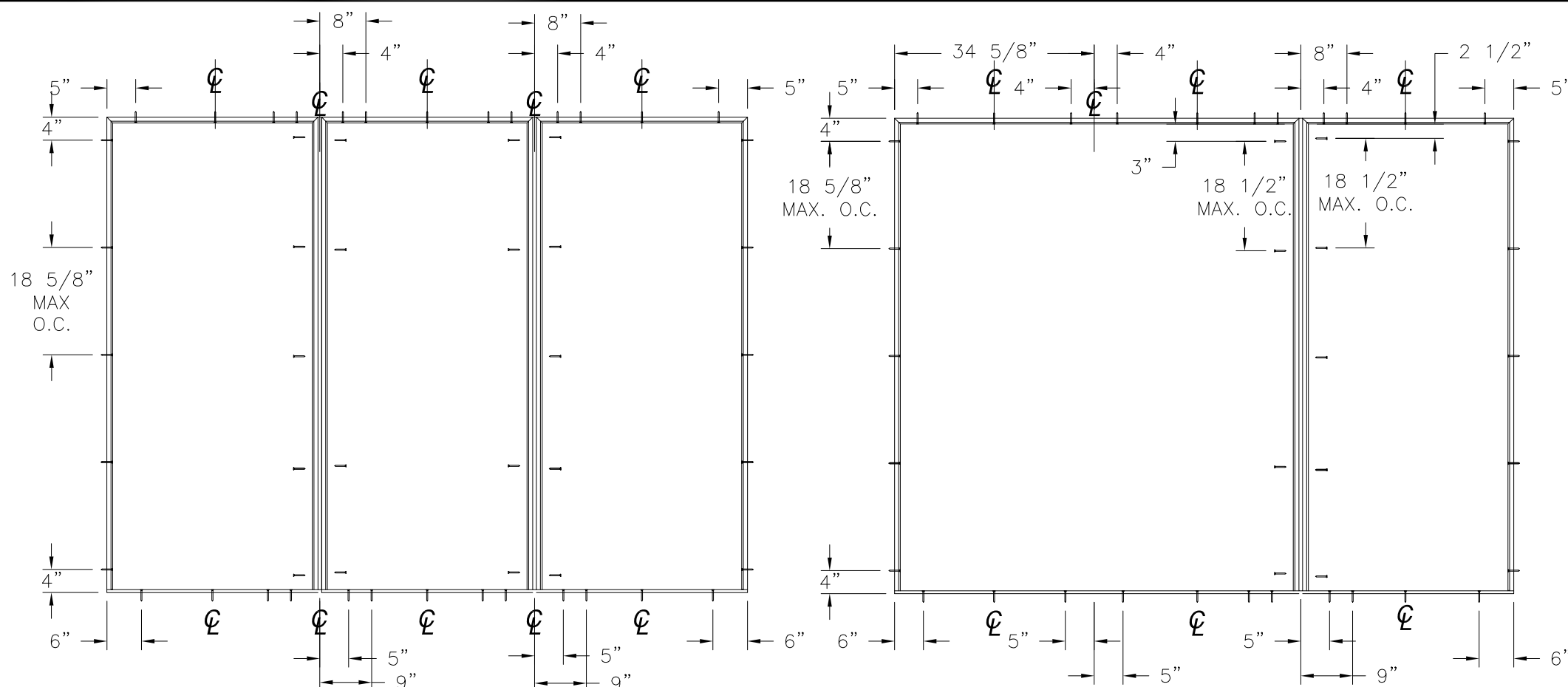
IN-SWING ENTRANCE DOOR W/SIDELITES (SLPS)
 FIBERGLASS NON-IMPACT GLAZED
 ANCHORING LAYOUT

DRAWN: A.R.	DWG NO. 08-03408	REV A
SCALE NTS	DATE 04/04/19	SHEET 4 OF 13

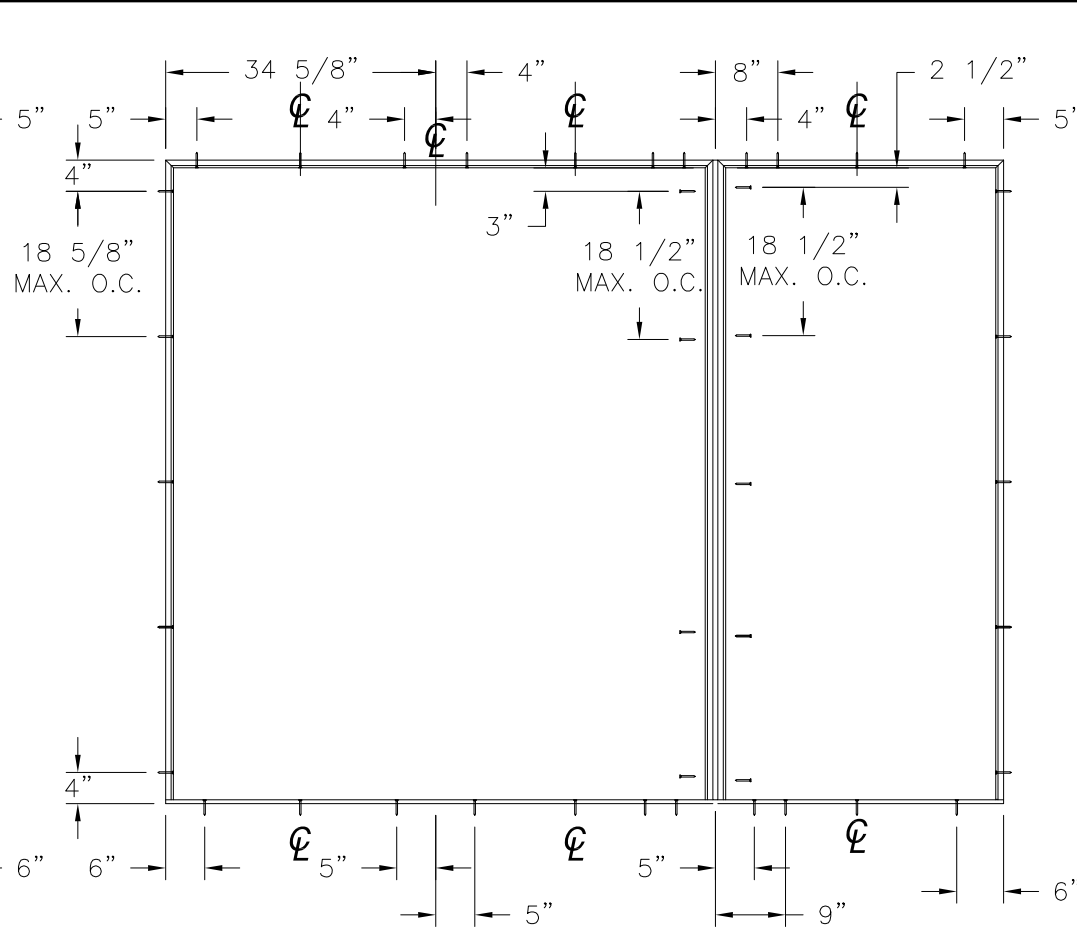
L. ROBERTO LOMAS P.E.
 1432 WOODFORD RD LEWISVILLE, NC 27023
 434-688-0609 rllomas@rlomaspe.com



Luis R. Lomas P.E.
 TX No.: 101889

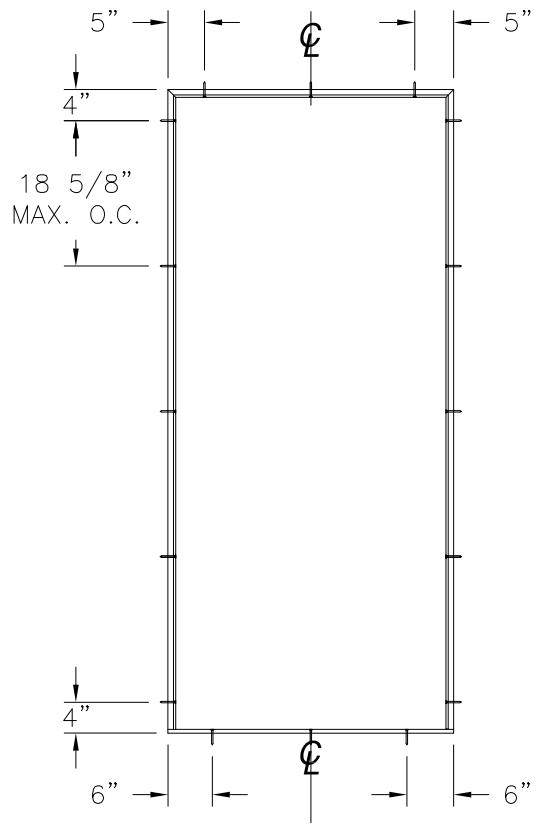


ANCHORING LAYOUT FOR OXO

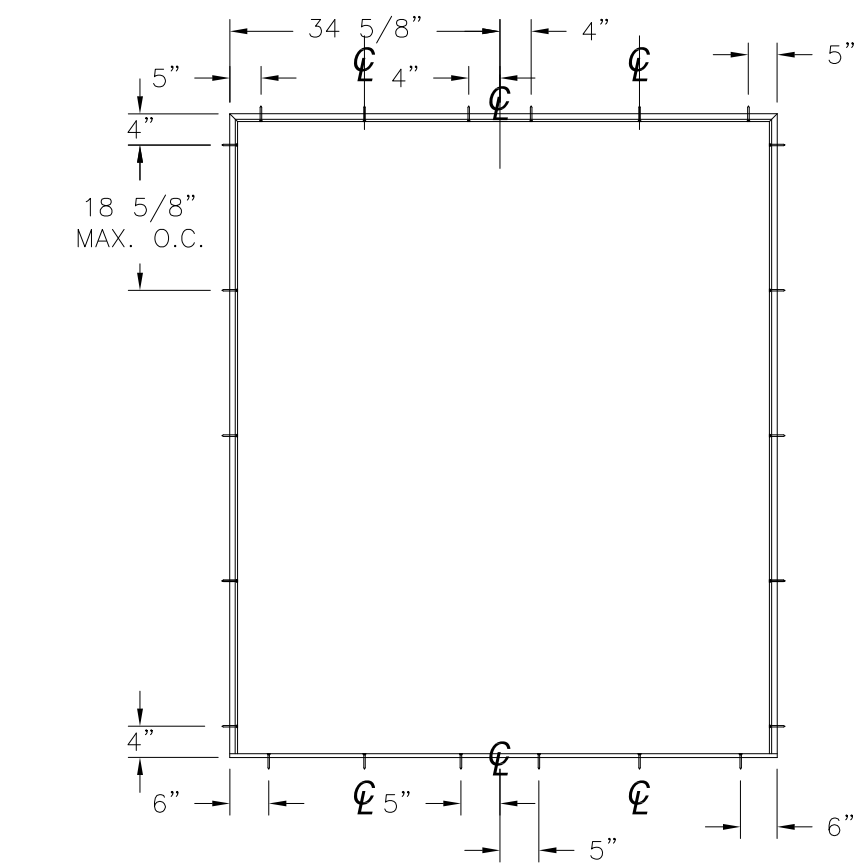


ANCHORING LAYOUT FOR XXO AND OXX

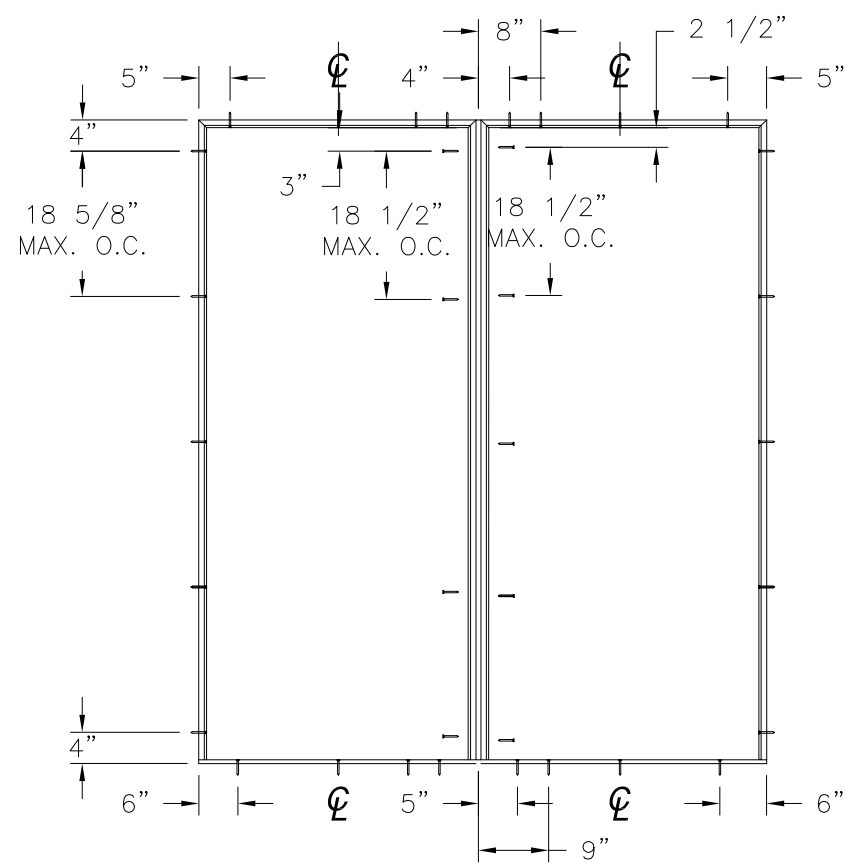
REVISIONS			
REV	DESCRIPTION	DATE	APPROVED
A	REVISED PER NEW CODE	02/11/2021	R.L.



ANCHORING LAYOUT FOR X



ANCHORING LAYOUT FOR XX



ANCHORING LAYOUT FOR OX AND XO

NAN YA PLASTICS CORP. USA
 8989 NORTH LOOP EAST
 HOUSTON, TX 77029

IN-SWING ENTRANCE DOOR W/SIDELITES (SLPS)
 FIBERGLASS NON-IMPACT GLAZED
 ANCHORING LAYOUTS

DRAWN: A.R.	DWG NO. 08-03408	REV A
SCALE NTS	DATE 04/04/19	SHEET 5 OF 13

L. ROBERTO LOMAS P.E.
 1432 WOODFORD RD LEWISVILLE, NC 27023
 434-688-0609 rllomas@lrlomaspe.com

SIGNED: 03/31/2021



Luis R. Lomas P.E.
 TX No.: 101889

2X BUCK/WOOD FRAMING BY OTHERS, 2X BUCK TO BE PROPERLY SECURED

1/2" MIN EDGE DISTANCE

1 1/4" MIN. EMBEDMENT

BACKER ROD AND APPROVED SEALANT BY OTHERS

#10 WOOD SCREW

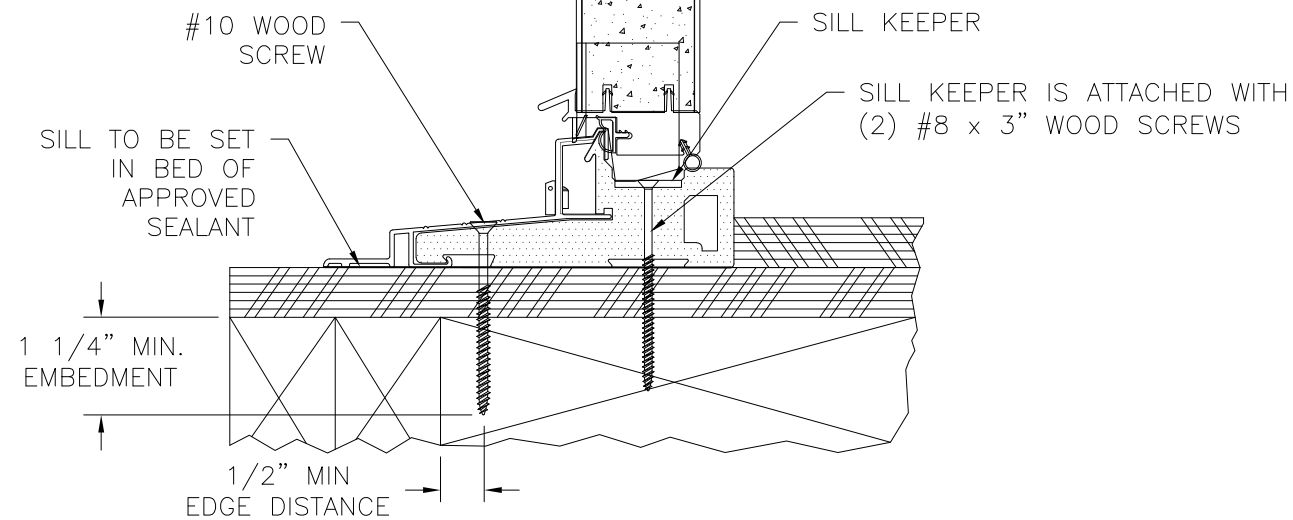
1/4" MAX. SHIM SPACE

HEAD KEEPER

HEAD KEEPER IS ATTACHED WITH (2) #8 x 3" WOOD SCREWS

EXTERIOR

INTERIOR



DOOR VERTICAL CROSS SECTION
2X BUCK/WOOD FRAMING INSTALLATION

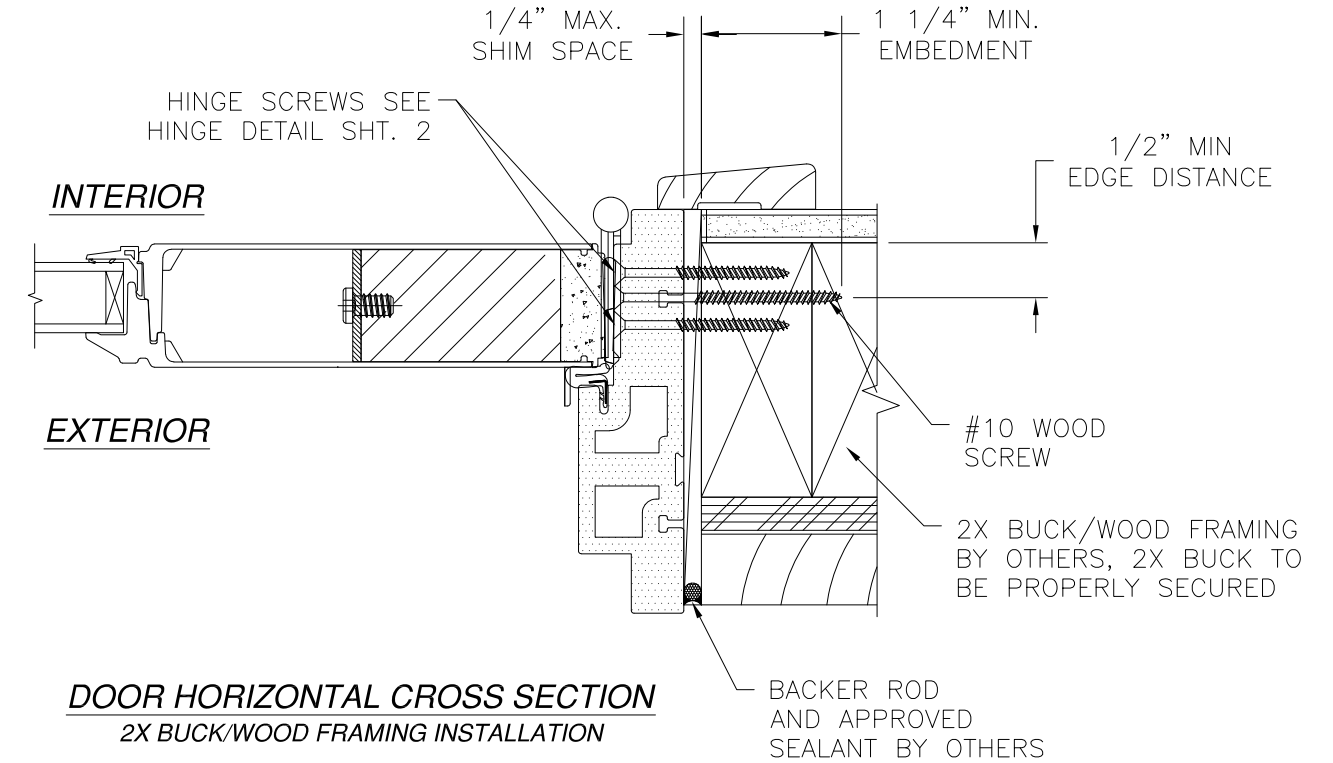
SILL KEEPER

SILL KEEPER IS ATTACHED WITH (2) #8 x 3" WOOD SCREWS

1 1/4" MIN. EMBEDMENT

1/2" MIN EDGE DISTANCE

REVISIONS			
REV	DESCRIPTION	DATE	APPROVED
A	REVISED PER NEW CODE	02/11/2021	R.L.



DOOR HORIZONTAL CROSS SECTION
2X BUCK/WOOD FRAMING INSTALLATION

- NOTES:**
1. INTERIOR AND EXTERIOR FINISHES, BY OTHERS, NOT SHOWN FOR CLARITY.
 2. PERIMETER AND JOINT SEALANT BY OTHERS TO BE DESIGNED IN ACCORDANCE WITH ASTM E2112

SIGNED: 03/31/2021

NAN YA PLASTICS CORP. USA
8989 NORTH LOOP EAST
HOUSTON, TX 77029

IN-SWING ENTRANCE DOOR W/SIDELITES (SLPS)
FIBERGLASS NON-IMPACT GLAZED
DOOR INSTALLATION DETAILS

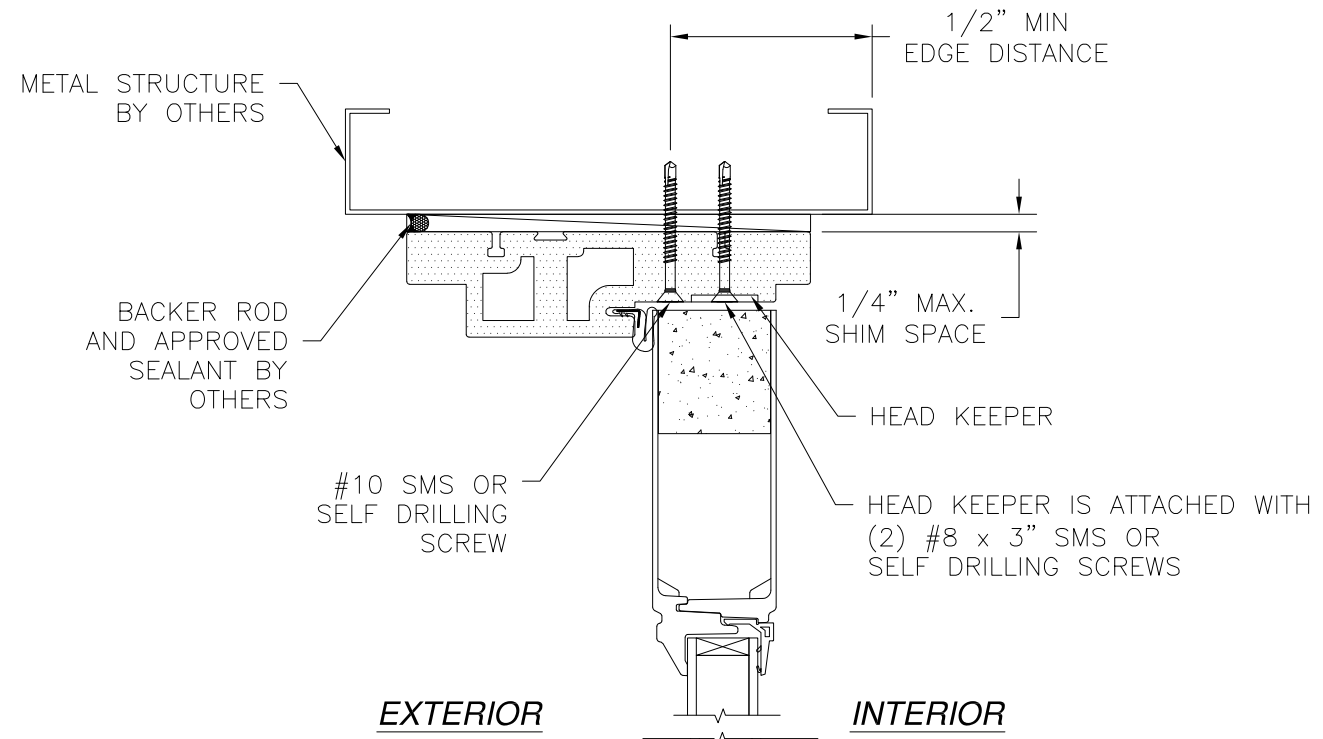
DRAWN: A.R.	DWG NO. 08-03408	REV A
SCALE NTS	DATE 04/04/19	SHEET 6 OF 13

L. ROBERTO LOMAS P.E.
1432 WOODFORD RD LEWISVILLE, NC 27023
434-688-0609 rllomas@rlomaspe.com

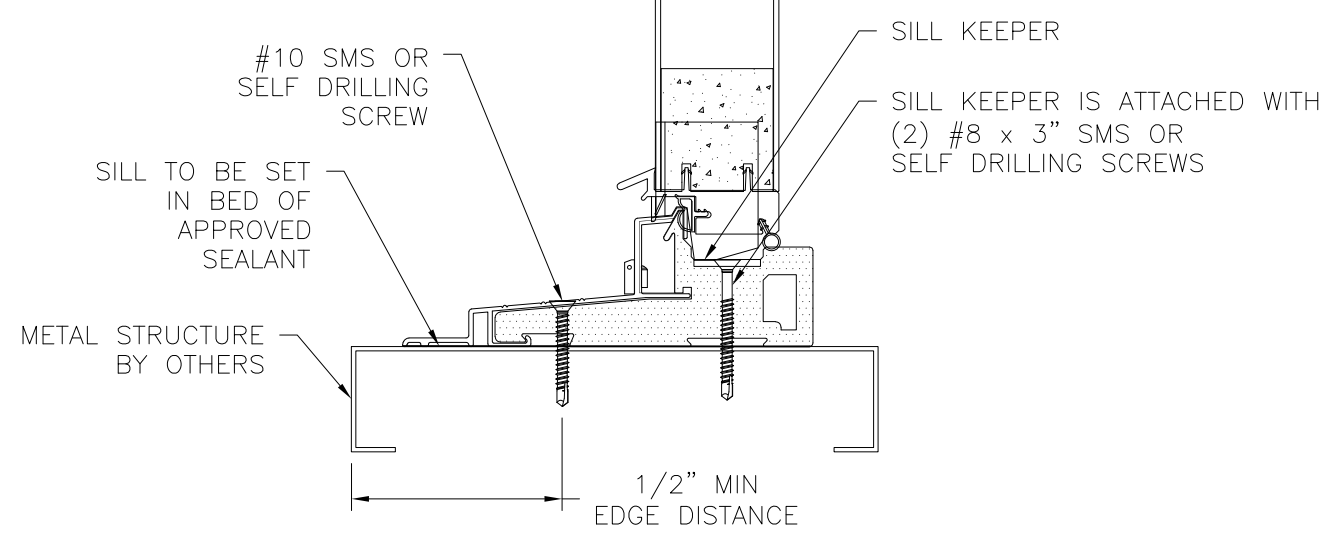


Luis R. Lomas P.E.
TX No.: 101889

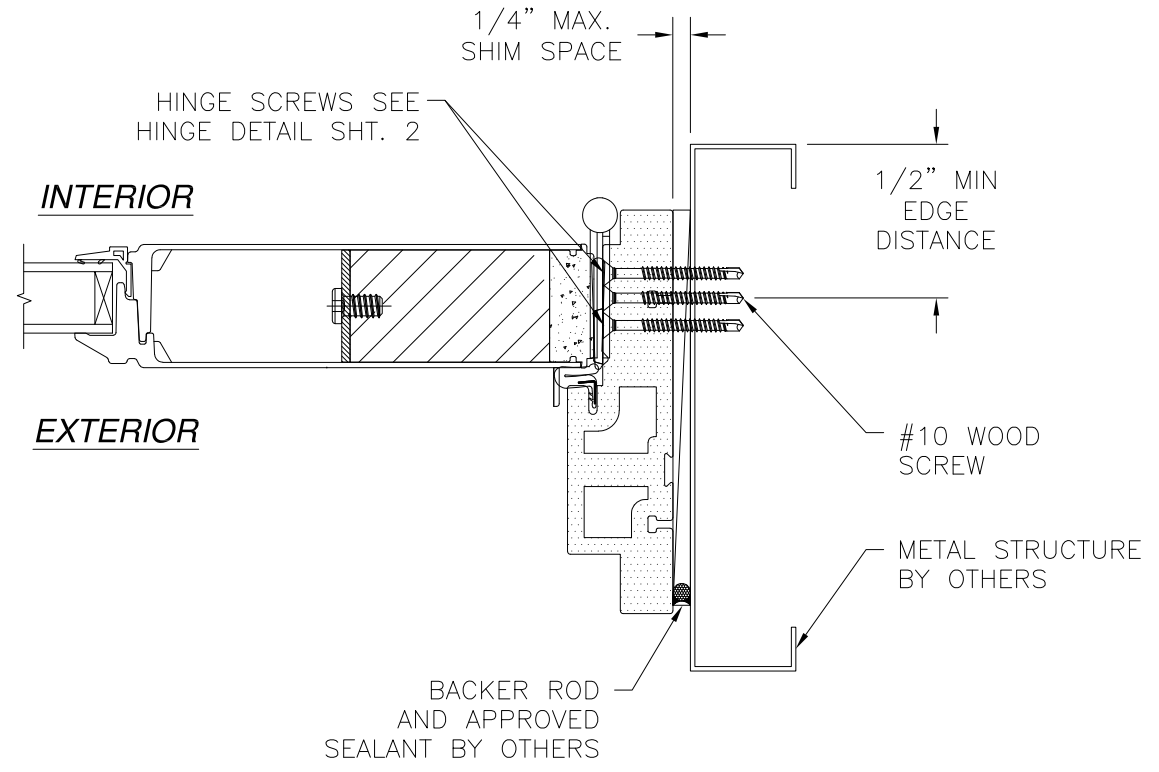
REVISIONS			
REV	DESCRIPTION	DATE	APPROVED
A	REVISED PER NEW CODE	02/11/2021	R.L.



EXTERIOR **INTERIOR**



DOOR VERTICAL CROSS SECTION
METAL STRUCTURE INSTALLATION



INTERIOR

EXTERIOR

DOOR HORIZONTAL CROSS SECTION
METAL STRUCTURE INSTALLATION

- NOTES:**
1. INTERIOR AND EXTERIOR FINISHES, BY OTHERS, NOT SHOWN FOR CLARITY.
 2. PERIMETER AND JOINT SEALANT BY OTHERS TO BE DESIGNED IN ACCORDANCE WITH ASTM E2112

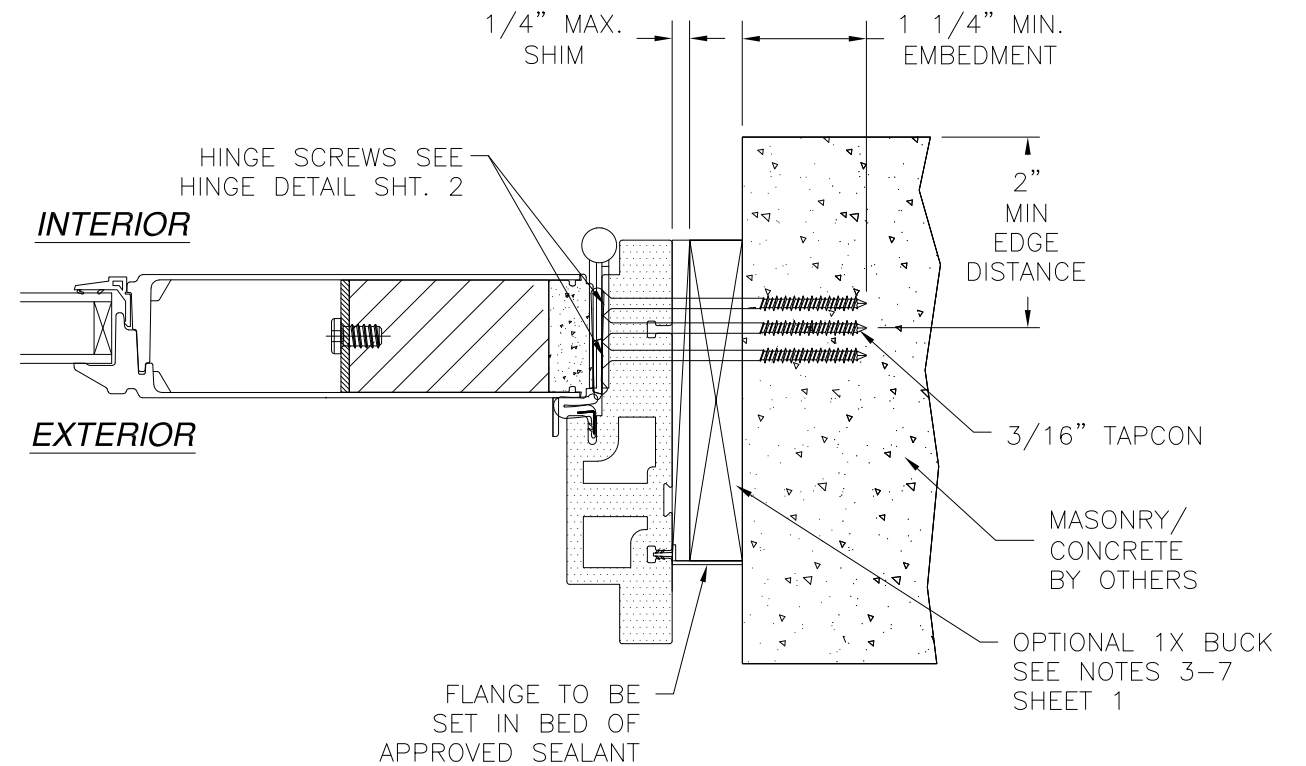
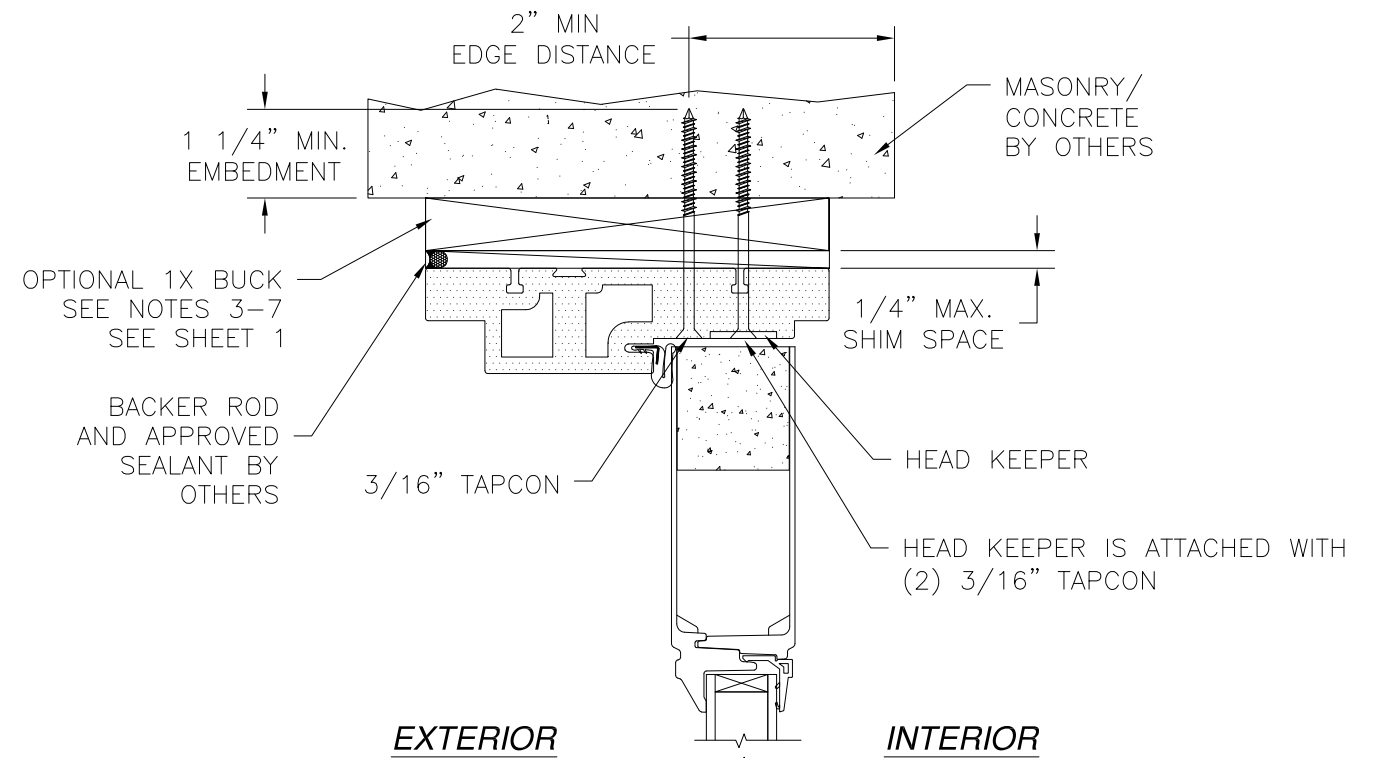
SIGNED: 03/31/2021

NAN YA PLASTICS CORP. USA 8989 NORTH LOOP EAST HOUSTON, TX 77029		
IN-SWING ENTRANCE DOOR W/SIDELITES (SLPS) FIBERGLASS NON-IMPACT GLAZED DOOR INSTALLATION DETAILS		
DRAWN: A.R.	DWG NO. 08-03408	REV A
SCALE NTS	DATE 04/04/19	SHEET 7 OF 13
L. ROBERTO LOMAS P.E. 1432 WOODFORD RD LEWISVILLE, NC 27023 434-688-0609 rllomas@rlomaspe.com		

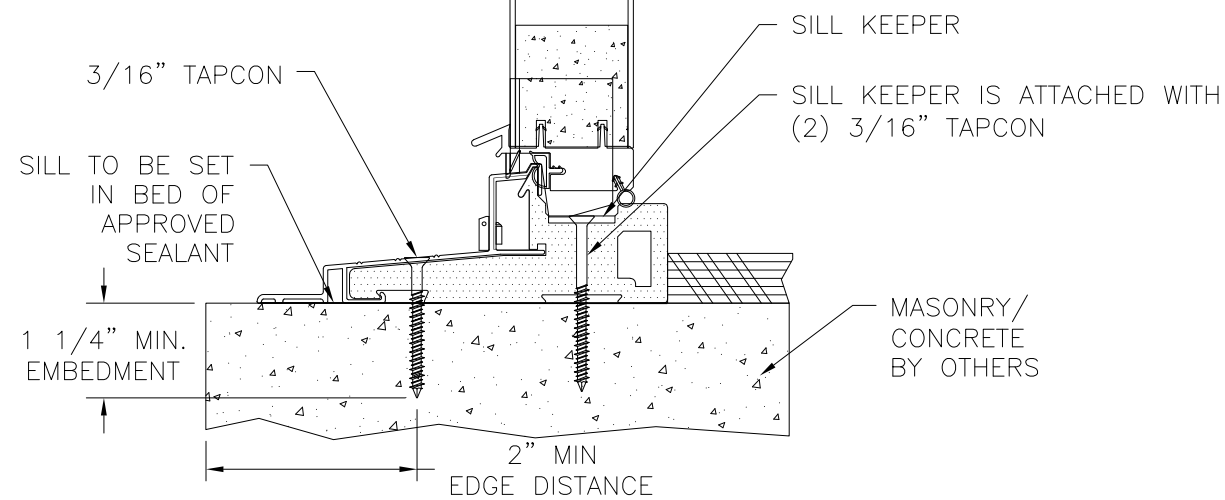


Luis R. Lomas P.E.
TX No.: 101889

REVISIONS			
REV	DESCRIPTION	DATE	APPROVED
A	REVISED PER NEW CODE	02/11/2021	R.L.



DOOR HORIZONTAL CROSS SECTION
MASONRY/CONCRETE INSTALLATION



DOOR VERTICAL CROSS SECTION
MASONRY/CONCRETE INSTALLATION

- NOTES:**
1. INTERIOR AND EXTERIOR FINISHES, BY OTHERS, NOT SHOWN FOR CLARITY.
 2. PERIMETER AND JOINT SEALANT BY OTHERS TO BE DESIGNED IN ACCORDANCE WITH ASTM E2112

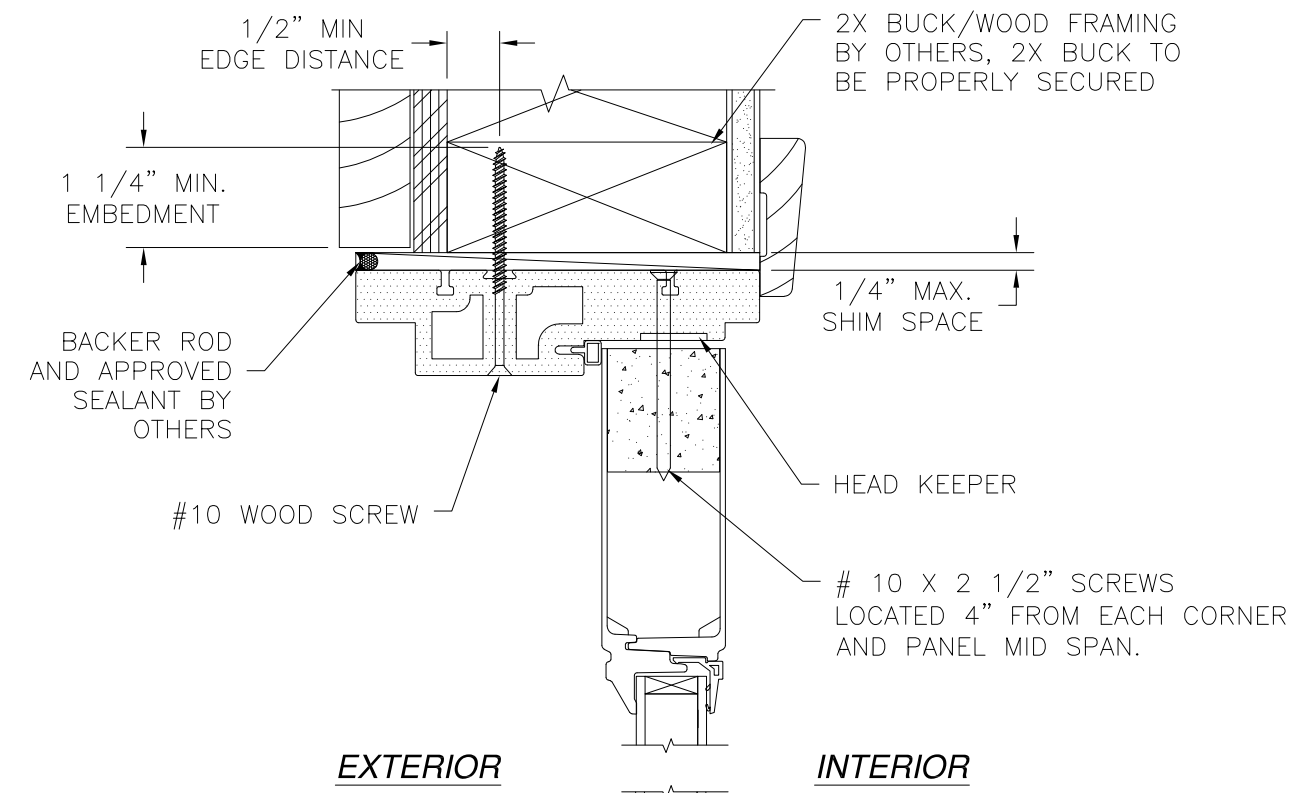
SIGNED: 03/31/2021

<p>NAN YA PLASTICS CORP. USA 8989 NORTH LOOP EAST HOUSTON, TX 77029</p>		
<p>IN-SWING ENTRANCE DOOR W/SIDELITES (SLPS) FIBERGLASS NON-IMPACT GLAZED DOOR INSTALLATION DETAILS</p>		
DRAWN: A.R.	DWG NO. 08-03408	REV A
SCALE NTS	DATE 04/04/19	SHEET 8 OF 13
<p>L. ROBERTO LOMAS P.E. 1432 WOODFORD RD LEWISVILLE, NC 27023 434-688-0609 rllomas@rlomaspe.com</p>		



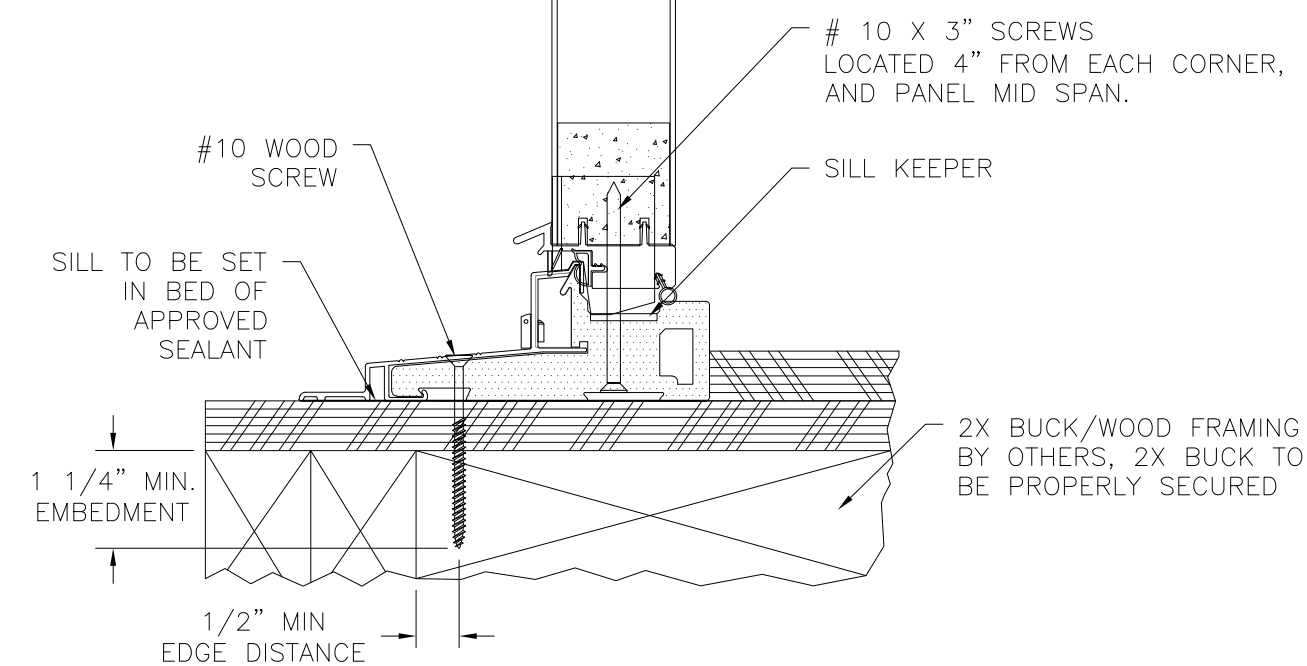
Luis R. Lomas P.E.
TX No.: 101889

REVISIONS			
REV	DESCRIPTION	DATE	APPROVED
A	REVISED PER NEW CODE	02/11/2021	R.L.

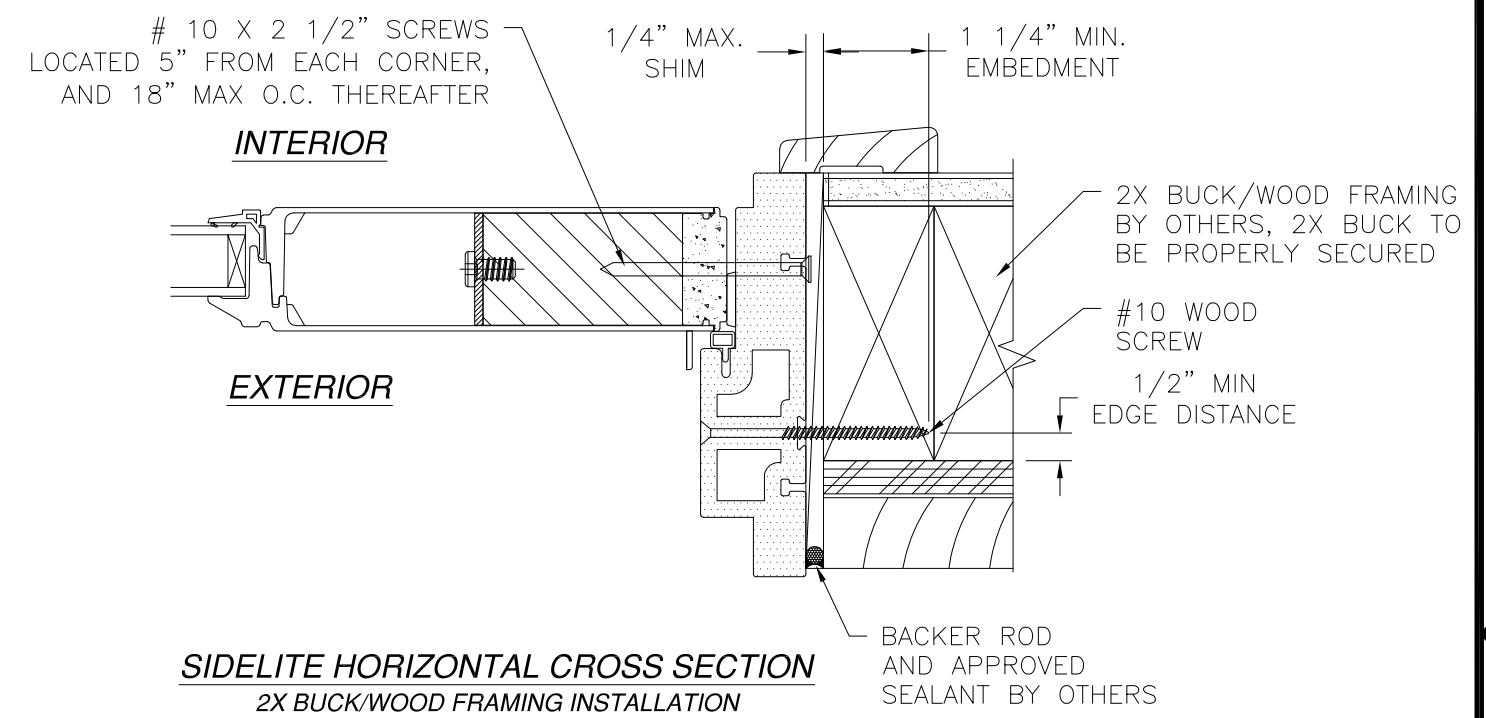


EXTERIOR

INTERIOR



SIDELITE VERTICAL CROSS SECTION
2X BUCK/WOOD FRAMING INSTALLATION



INTERIOR

EXTERIOR

SIDELITE HORIZONTAL CROSS SECTION
2X BUCK/WOOD FRAMING INSTALLATION

- NOTES:**
1. INTERIOR AND EXTERIOR FINISHES, BY OTHERS, NOT SHOWN FOR CLARITY.
 2. PERIMETER AND JOINT SEALANT BY OTHERS TO BE DESIGNED IN ACCORDANCE WITH ASTM E2112

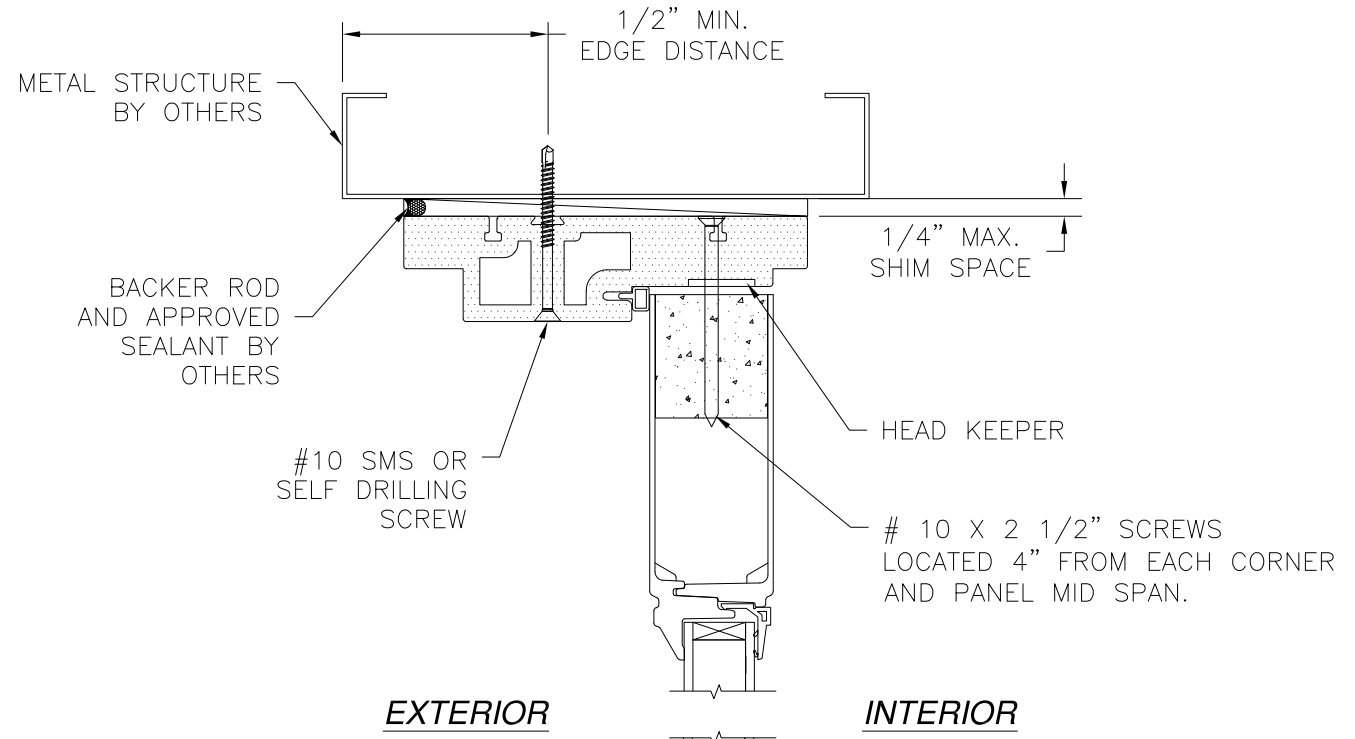
SIGNED: 03/31/2021

<p>NAN YA PLASTICS CORP. USA 8989 NORTH LOOP EAST HOUSTON, TX 77029</p>		
<p>IN-SWING ENTRANCE DOOR W/SIDELITES (SLPS) FIBERGLASS NON-IMPACT GLAZED SIDELITES INSTALLATION DETAILS</p>		
DRAWN: A.R.	DWG NO. 08-03408	REV A
SCALE NTS	DATE 04/04/19	SHEET 9 OF 13
<p>L. ROBERTO LOMAS P.E. 1432 WOODFORD RD LEWISVILLE, NC 27023 434-688-0609 rllomas@rlomaspe.com</p>		

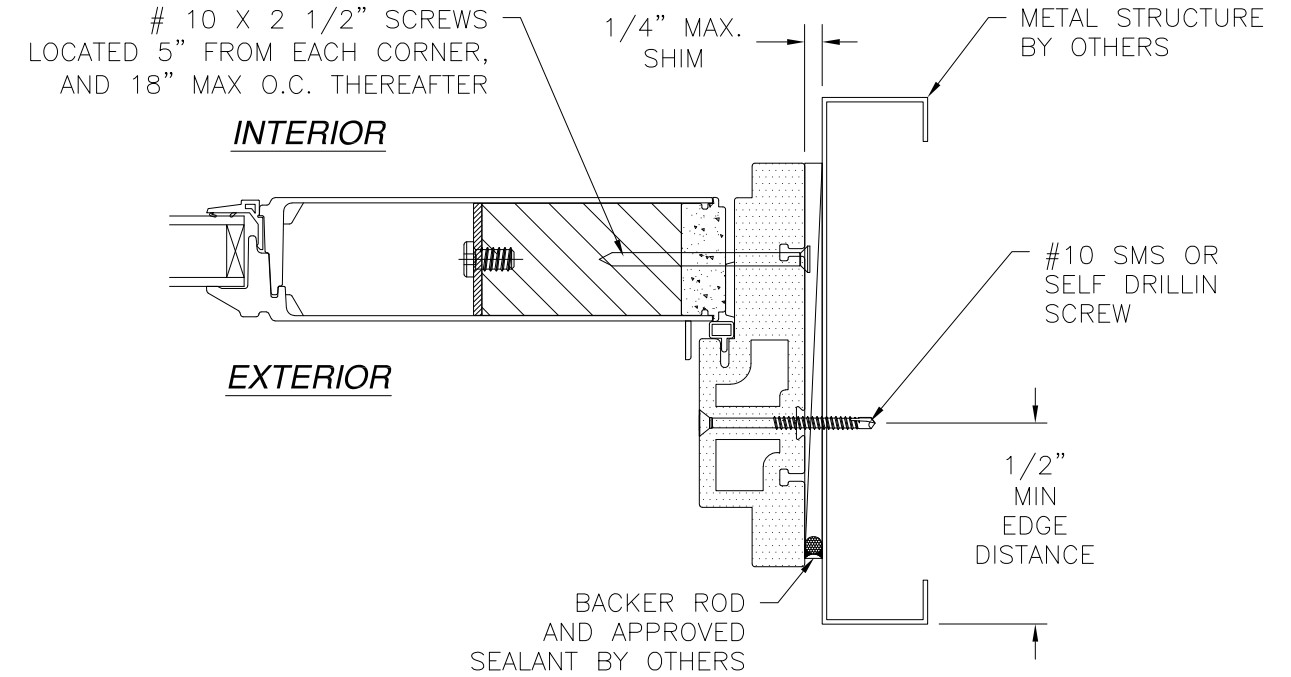


Luis R. Lomas P.E.
TX No.: 101889

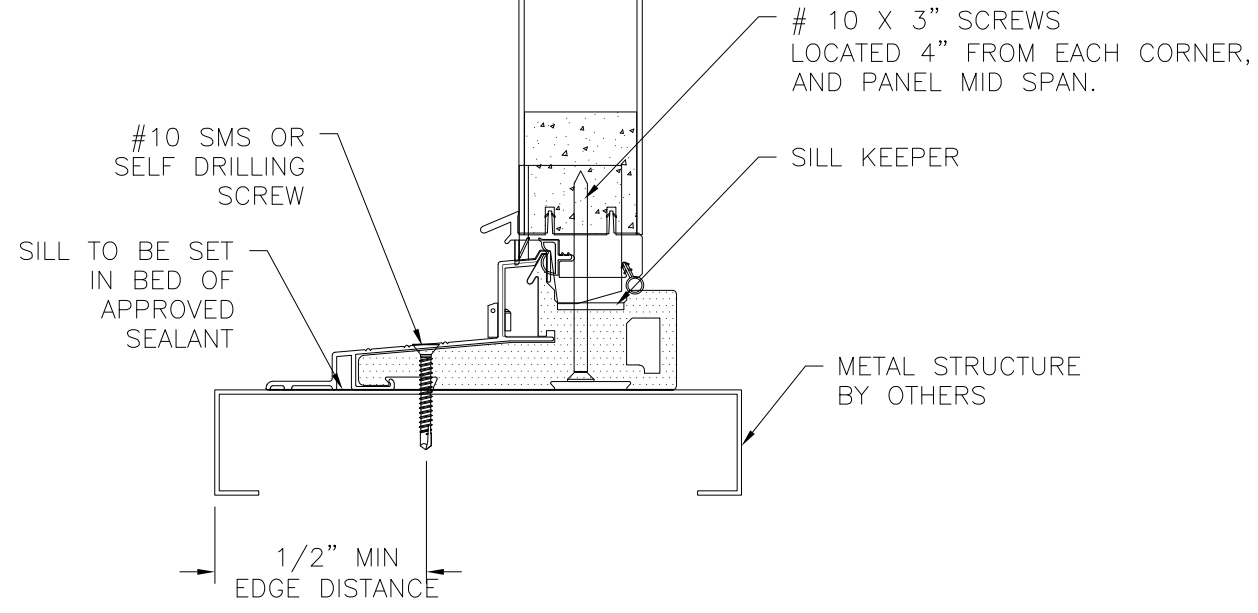
REVISIONS			
REV	DESCRIPTION	DATE	APPROVED
A	REVISED PER NEW CODE	02/11/2021	R.L.



EXTERIOR **INTERIOR**



SIDELITE HORIZONTAL CROSS SECTION
METAL STRUCTURE INSTALLATION



SIDELITE VERTICAL CROSS SECTION
METAL STRUCTURE INSTALLATION

- NOTES:**
 1. INTERIOR AND EXTERIOR FINISHES, BY OTHERS, NOT SHOWN FOR CLARITY.
 2. PERIMETER AND JOINT SEALANT BY OTHERS TO BE DESIGNED IN ACCORDANCE WITH ASTM E2112

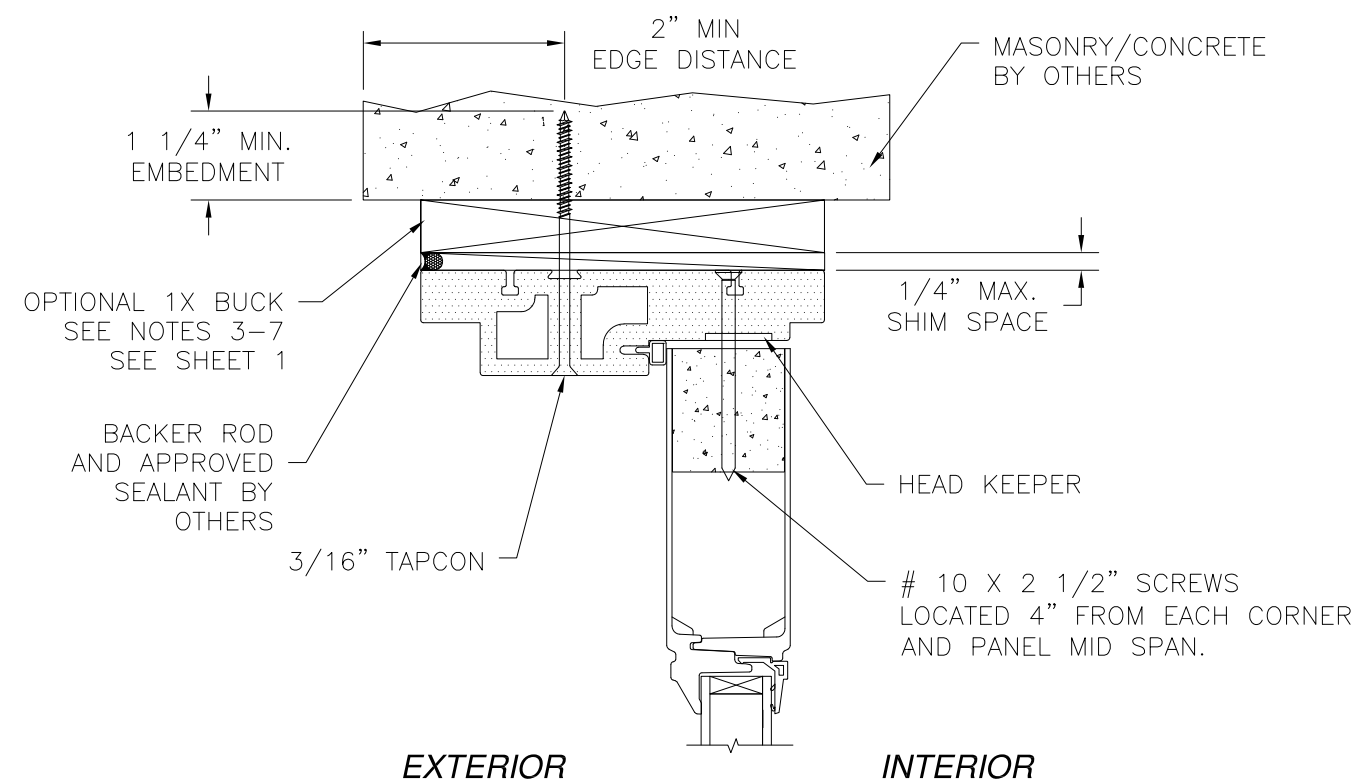
SIGNED: 03/31/2021

NAN YA PLASTICS CORP. USA 8989 NORTH LOOP EAST HOUSTON, TX 77029		
IN-SWING ENTRANCE DOOR W/SIDELITES (SLPS) FIBERGLASS NON-IMPACT GLAZED SIDELITES INSTALLATION DETAILS		
DRAWN: A.R.	DWG NO. 08-03408	REV A
SCALE NTS	DATE 04/04/19	SHEET 10 OF 13
L. ROBERTO LOMAS P.E. 1432 WOODFORD RD LEWISVILLE, NC 27023 434-688-0609 rllomas@rlomaspe.com		

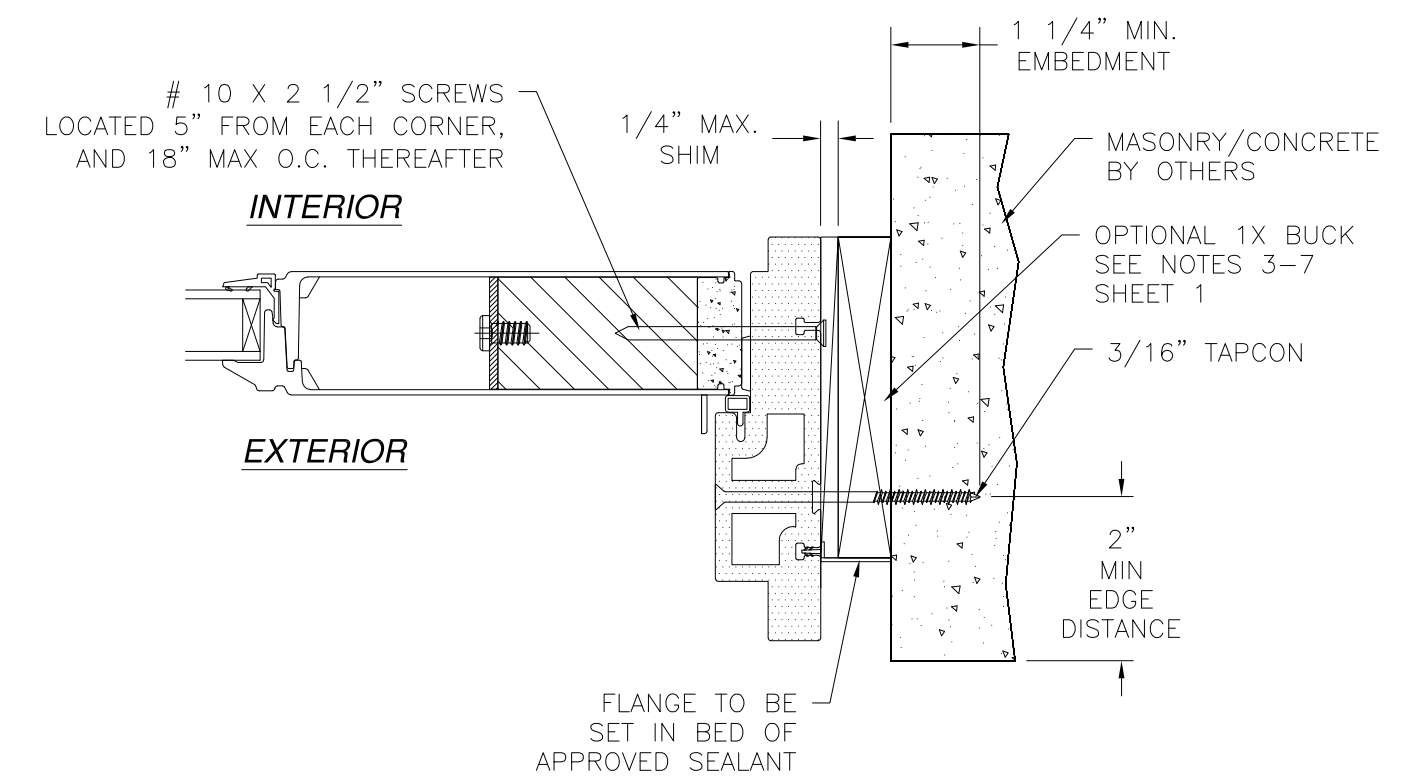


Luis R. Lomas P.E.
TX No.: 101889

REVISIONS			
REV	DESCRIPTION	DATE	APPROVED
A	REVISED PER NEW CODE	02/11/2021	R.L.



SIDELITE VERTICAL CROSS SECTION
MASONRY/CONCRETE INSTALLATION



SIDELITE HORIZONTAL CROSS SECTION
MASONRY/CONCRETE INSTALLATION

- NOTES:**
1. INTERIOR AND EXTERIOR FINISHES, BY OTHERS, NOT SHOWN FOR CLARITY.
 2. PERIMETER AND JOINT SEALANT BY OTHERS TO BE DESIGNED IN ACCORDANCE WITH ASTM E2112

SIGNED: 03/31/2021

NAN YA PLASTICS CORP. USA
8989 NORTH LOOP EAST
HOUSTON, TX 77029

IN-SWING ENTRANCE DOOR W/SIDELITES (SLPS)
FIBERGLASS NON-IMPACT GLAZED
SIDELITES INSTALLATION DETAILS

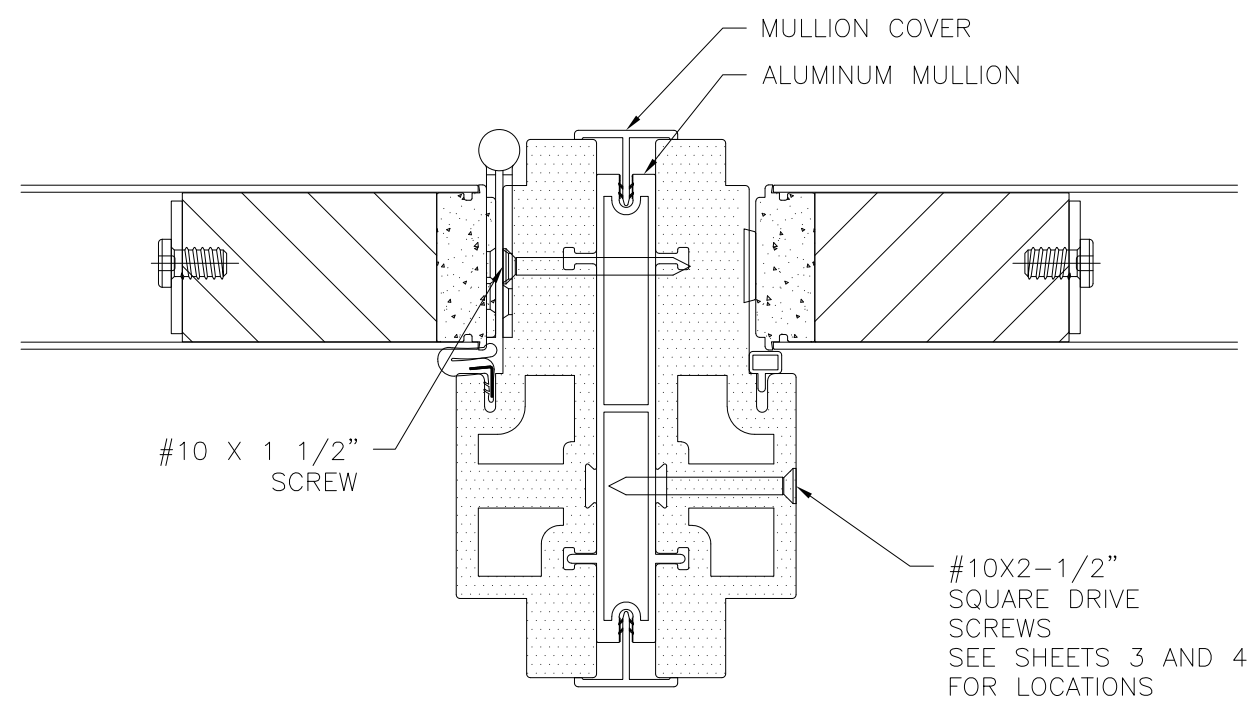
DRAWN: A.R.	DWG NO. 08-03408	REV A
SCALE NTS	DATE 04/04/19	SHEET 11 OF 13

L. ROBERTO LOMAS P.E.
1432 WOODFORD RD LEWISVILLE, NC 27023
434-688-0609 rllomas@rlomaspe.com

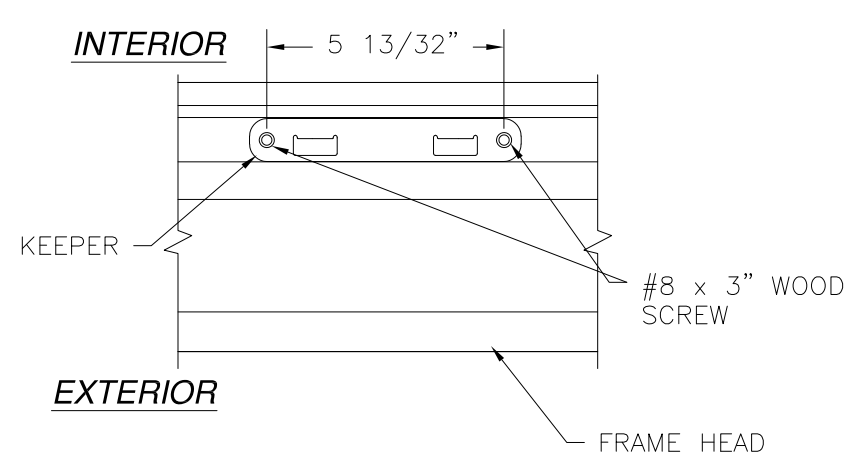


Luis R. Lomas P.E.
TX No.: 101889

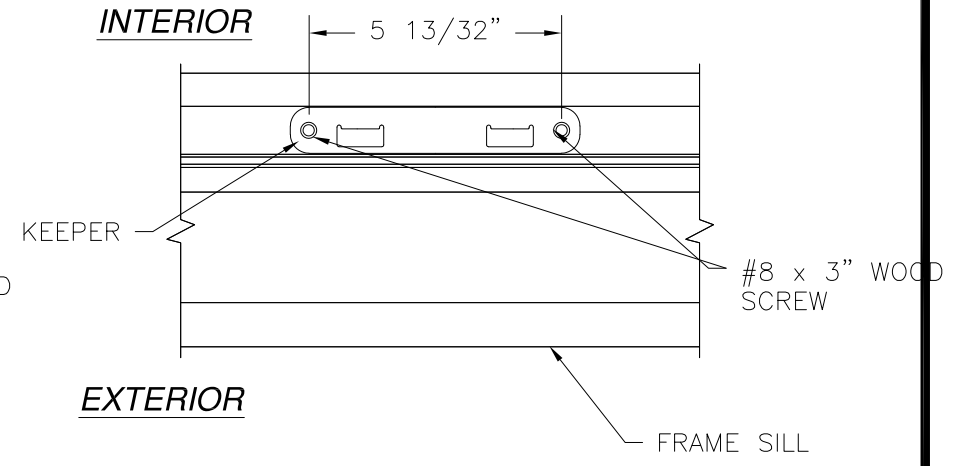
REVISIONS			
REV	DESCRIPTION	DATE	APPROVED
A	REVISED PER NEW CODE	02/11/2021	R.L.



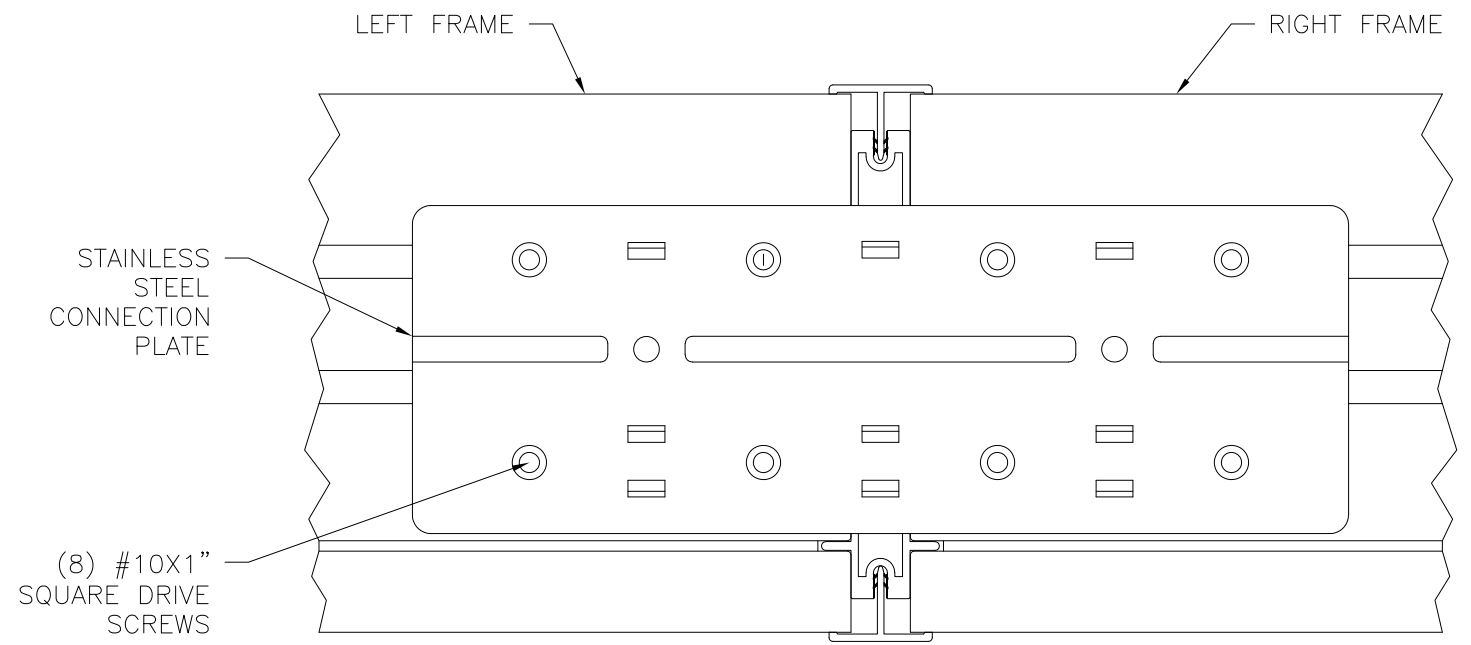
MULLION DETAIL



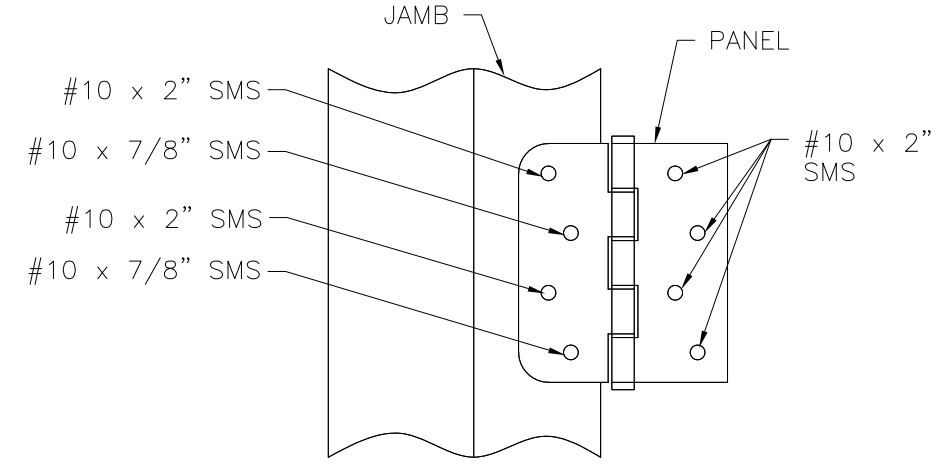
HEAD KEEPER DETAIL



SILL KEEPER DETAIL



FRAME CONNECTION DETAIL



HINGE INSTALLATION DETAIL

SIGNED: 03/31/2021

NAN YA PLASTICS CORP. USA
 8989 NORTH LOOP EAST
 HOUSTON, TX 77029

IN-SWING ENTRANCE DOOR W/SIDELITES (SLPS)
 FIBERGLASS NON-IMPACT GLAZED
 INSTALLATION DETAILS

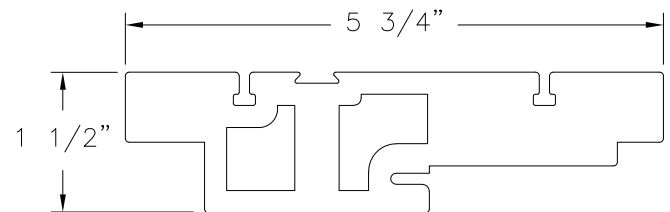
DRAWN: A.R.	DWG NO. 08-03408	REV A
SCALE NTS	DATE 04/04/19	SHEET 12 OF 13

L. ROBERTO LOMAS P.E.
 1432 WOODFORD RD LEWISVILLE, NC 27023
 434-688-0609 rllomas@lrlomaspe.com

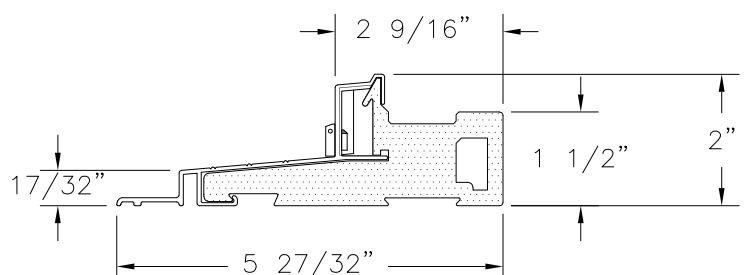


Luis R. Lomas P.E.
 TX No.: 101889

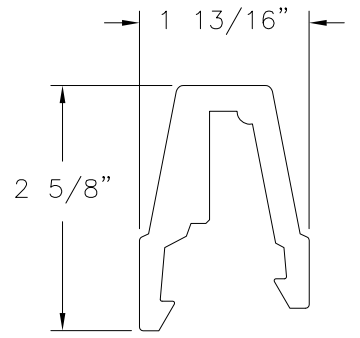
REVISIONS			
REV	DESCRIPTION	DATE	APPROVED
A	REVISED PER NEW CODE 1 1/32"	02/11/2021	R.L.



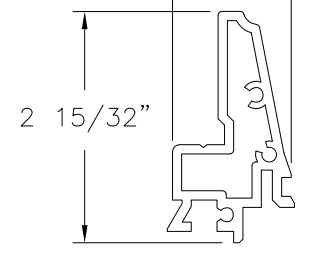
HEAD FRAME & JAMB
FOAM PVC CO-EX



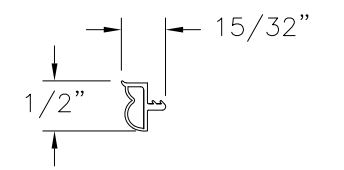
INSWING DOOR SILL DETAIL



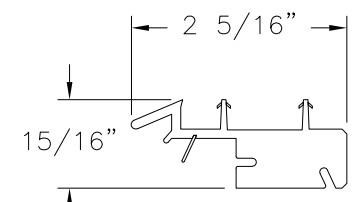
MULLION COVER (B)
FOAM PVC



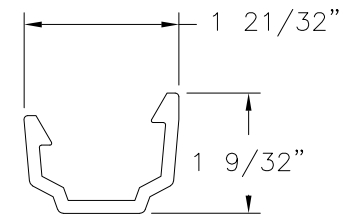
REINFORCEMENT (B)
ALUMINUM



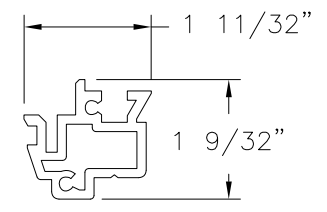
WEATHER STRIP (C)
EPDM



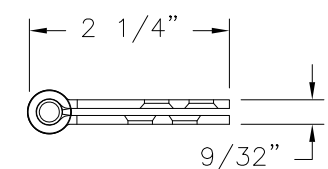
DOOR BOTTOM
FOAM & RIGID PVC



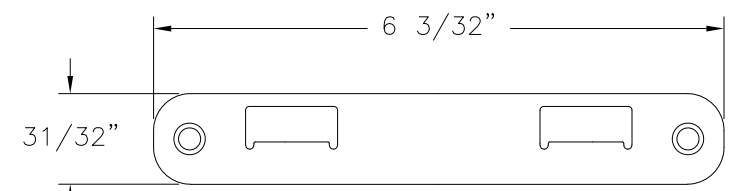
T-ASTRAGAL (A)
RIGID PVC



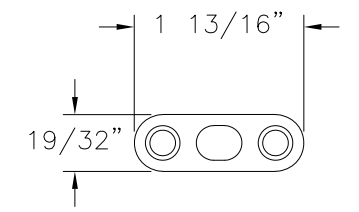
REINFORCEMENT (A)
ALUMINUM



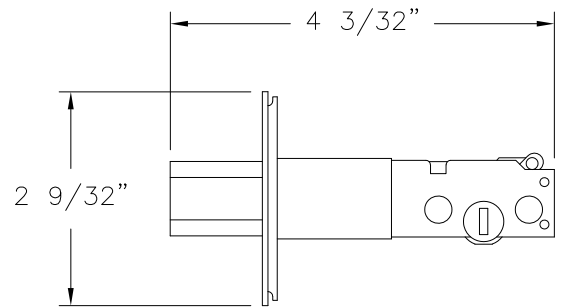
4\"/>



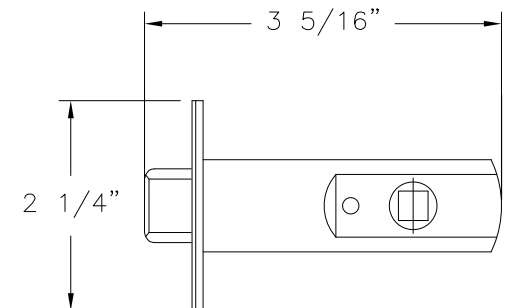
TOP/BOTTOM BAR KEEPER
STAINLESS STEEL BY MICOTA TECH



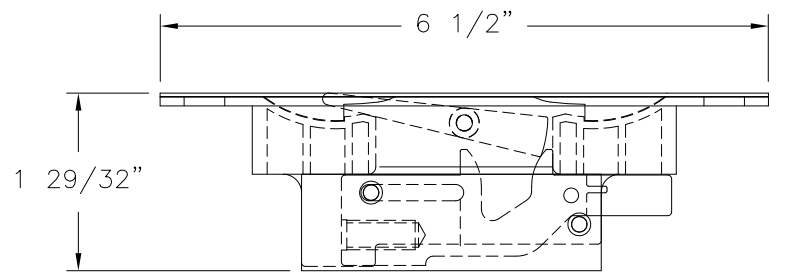
DRIVE BAR PLATE
STAINLESS STEEL BY MICOTA TECH



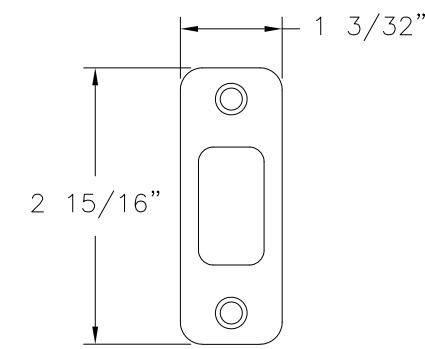
DOOR DEADBOLT
STEEL (SS92Y BY MICOTA TECH



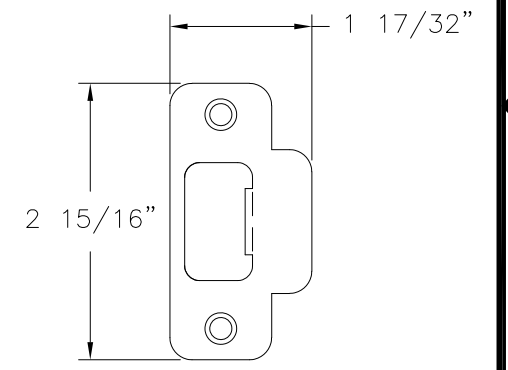
DOOR LATCH
STEEL (SS92Y BY MICOTA TECH



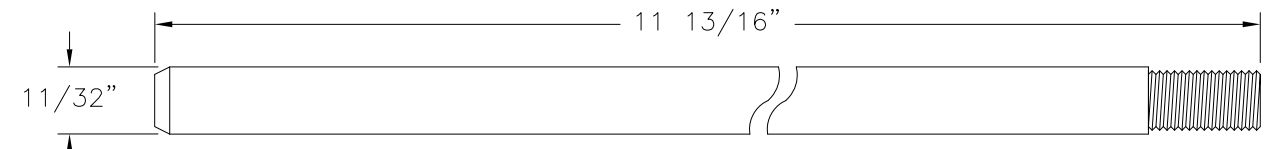
FLUSH BOLT MECHANISM
DIE CAST, STEEL, POM (SS93X BY MICOTA TECH



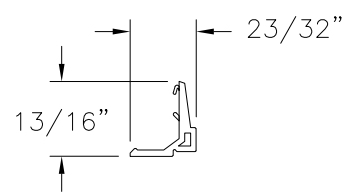
DEADBOLT KEEPER
STAINLESS STEEL BY MICOTA TECH



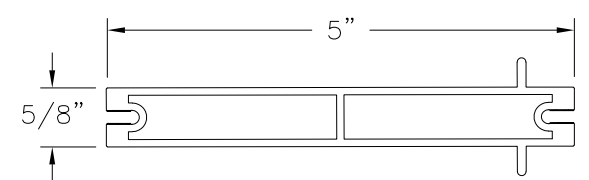
LATCH KEEPER
STAINLESS STEEL BY MICOTA TECH



FLUSH BOLT BAR
STAINLESS STEEL BY JAM YUAN ENTERPRISES CO., LTD



GLAZING BEAD
PVC



ALUMINUM MULLION
ALUMINUM

NAN YA PLASTICS CORP. USA
8989 NORTH LOOP EAST
HOUSTON, TX 77029

IN-SWING ENTRANCE DOOR W/SIDELITES (SLPS)
FIBERGLASS NON-IMPACT GLAZED
COMPONENTS

DRAWN: A.R.	DWG NO. 08-03408	REV A
SCALE NTS	DATE 04/04/19	SHEET 13 OF 13

L. ROBERTO LOMAS P.E.
1432 WOODFORD RD LEWISVILLE, NC 27023
434-688-0609 rllomas@lrlomaspe.com

SIGNED: 03/31/2021



Luis R. Lomas P.E.
TX No.: 101889