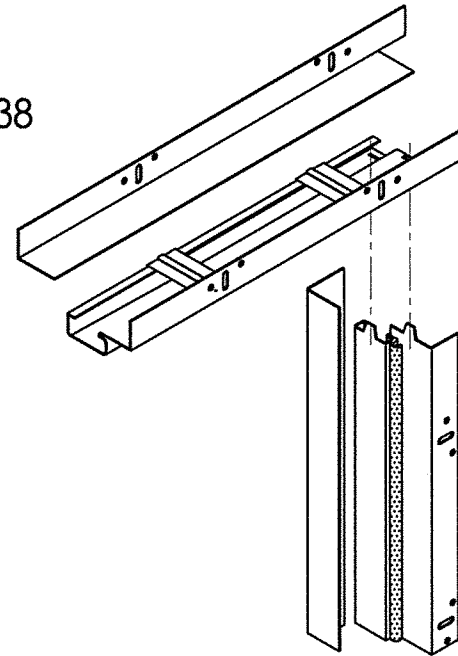




21300 W 8 Mile Rd.
Southfield, MI 48075-5638



ADJUSTABLE STEEL DOOR FRAME
K2A-Series

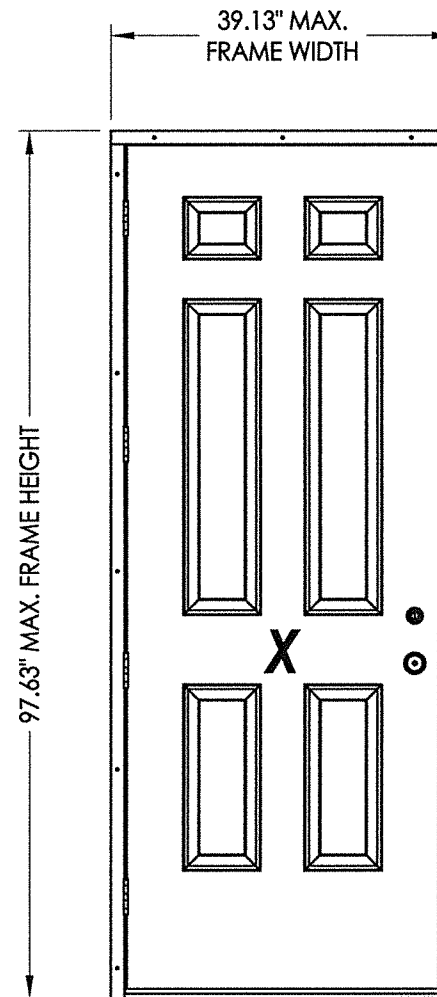
ENTRY-FIT™ "K2A-Series"
ADJUSTABLE STEEL DOOR FRAME
Utilizing a Steel Door Panel
"IMPACT"

EVALUATED FOR USE IN THE STATE OF TEXAS

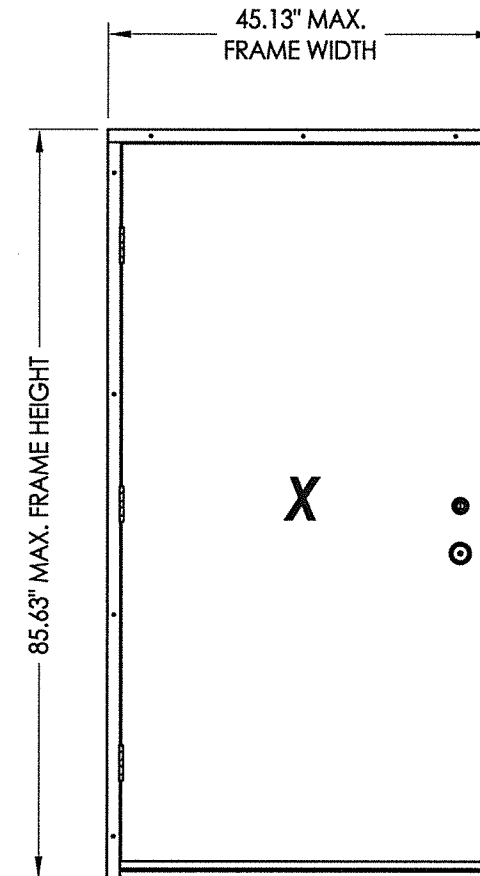
The Steel Door system described herein complies with the 2018 International Residential Code (IRC), Sections R301 & R609 and the 2018 International Building Code (IBC), Sections 1404.13, 1609, 1709.5, 2403 and 2404 subject to the following conditions:

1. Anchors shall be as listed and spaced as shown in the details. Anchor embedment to base material shall be beyond wall dressing or stucco.
2. This system has been tested and evaluated as a large missile impact protective system for installation in areas that require wind borne debris protection. This product meets missile level "D" as defined in ASTM E 1996.
3. Allowable design pressure requirements must be equal to or less than the design pressure rating shown in the design pressure chart, sheet 1 of this drawing.
4. Conditions not covered by this drawing are subject to further engineering analysis.

| TABLE OF CONTENTS | |
|-------------------|--|
| SHEET# | DESCRIPTION |
| 1 | Typical elevations, design pressures & general notes |
| 2 | Door panel details |
| 3 | Corner detail |
| 4 | Elevations |
| 5 | Horizontal cross sections |
| 6 | Vertical cross sections |
| 7 | Frame & buck anchoring (7'-0" door) |
| 8 | Frame & buck anchoring (8'-0" door) |
| 9 | Bill of materials and components |

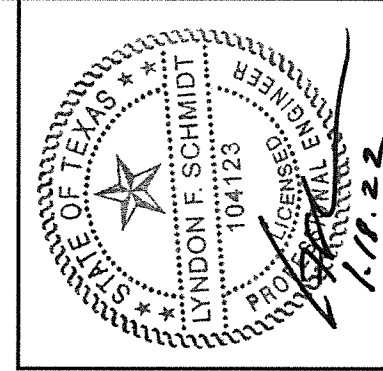


INSWING OR OUTSWING



INSWING

| DOOR PANEL | MAX. OVERALL FRAME DIMENSION | DESIGN PRESSURE (PSF) INSWING | | DESIGN PRESSURE (PSF) OUTSWING | |
|------------|------------------------------|-------------------------------|----------|--------------------------------|----------|
| | | POSITIVE | NEGATIVE | POSITIVE | NEGATIVE |
| TAYLOR | 45.13" X 85.63" | + 50.0 | - 60.0 | N/A | N/A |
| TAYLOR | 39.13" X 97.63" | + 50.0 | - 55.0 | + 50.0 | - 50.0 |

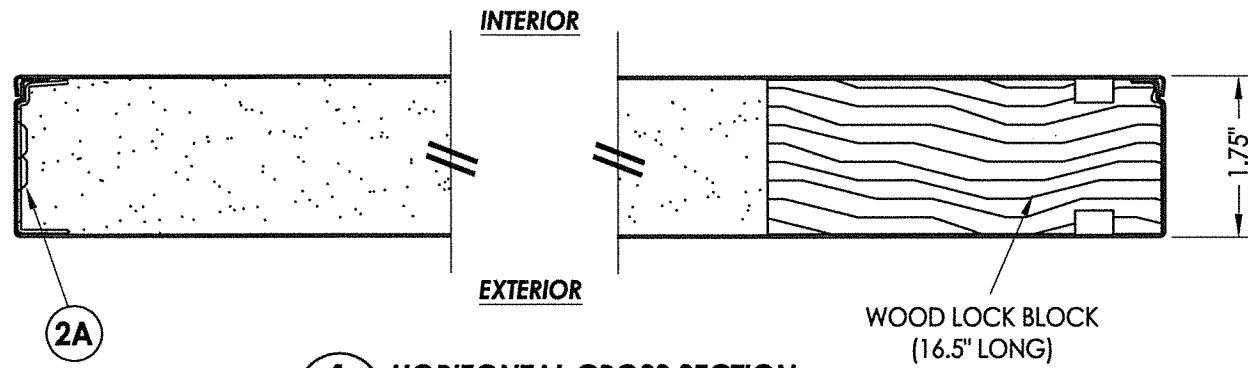


Documents Prepared By: Lyndon F. Schmidt, P.E.
TEXAS P.E. #104123

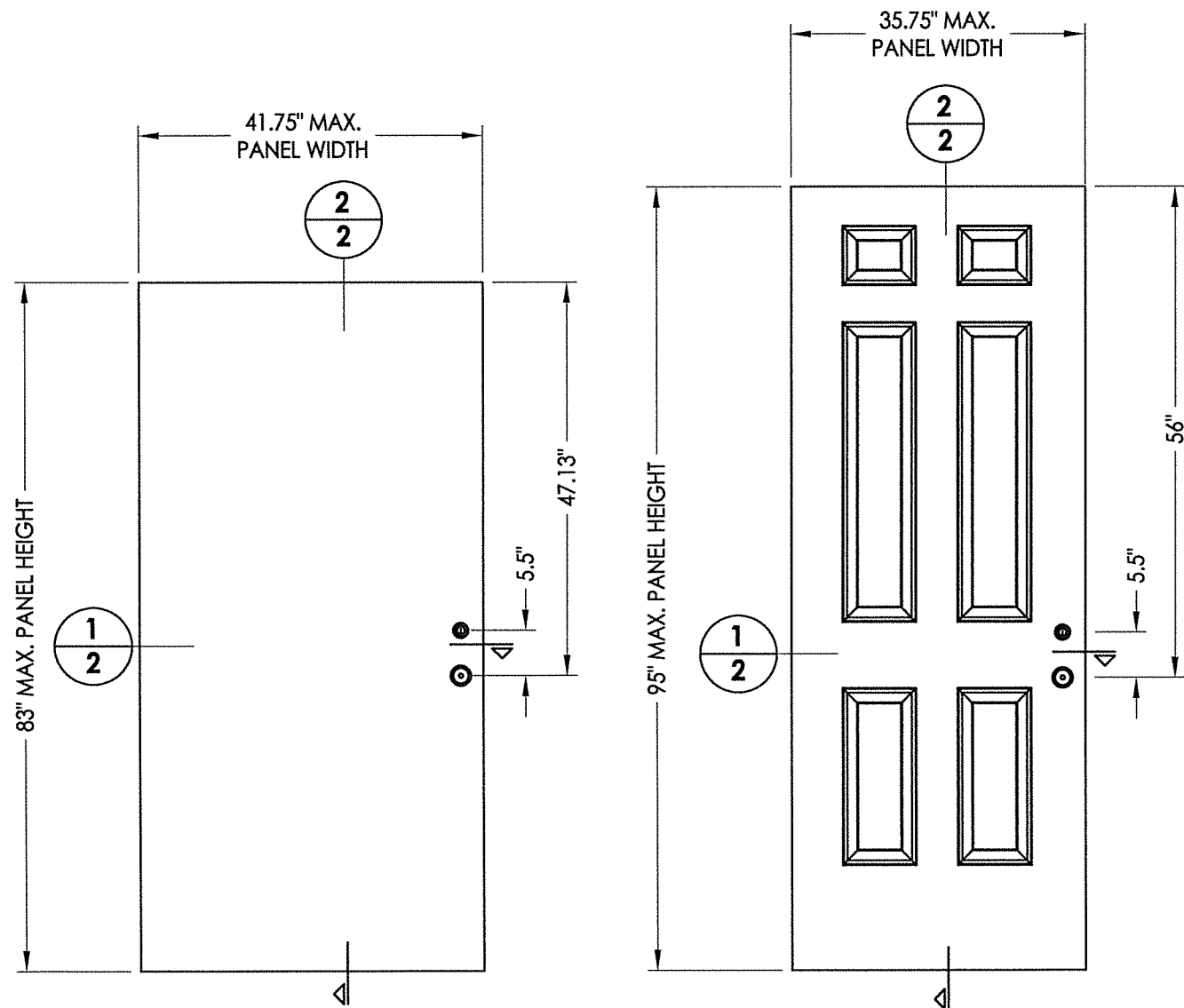
RW BUILDING CONSULTANTS, INC.
P.O. Box 230 Vairico FL 33595
Phone No.: 813.659.9197
TEXAS BOARD OF PROFESSIONAL ENGINEERS
CERTIFICATE OF REGISTRATION # F-11852

| | | |
|----------------------|--|-----|
| PRODUCT: | STEEL FRAME (K2A-SERIES) | |
| PART OR ASSEMBLY: | TYPICAL ELEVATION, DESIGN PRESSURE & GENERAL NOTES | |
| NO. | DATE | BY |
| 1 | 1/12/22 | LFS |
| REVISIONS | | |
| DATE: 5/07/19 | | |
| SCALE: N.T.S. | | |
| DWG. BY: RW | | |
| CHK. BY: LFS | | |
| DRAWING NO.: TX-4936 | | |
| SHEET 1 OF 9 | | |

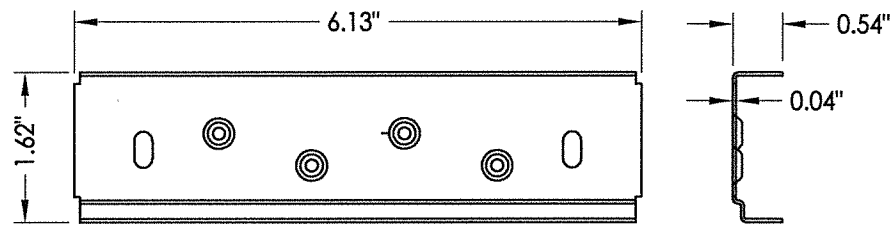
Z:\Clients\IDP PERMANENT\B - Texas Dept of Ins\DR-1063 - K2A SERIES w STEEL DR/C - Drawings\TX-4936.dwg



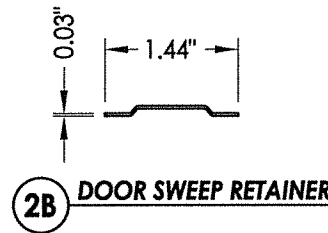
1
2 HORIZONTAL CROSS SECTION



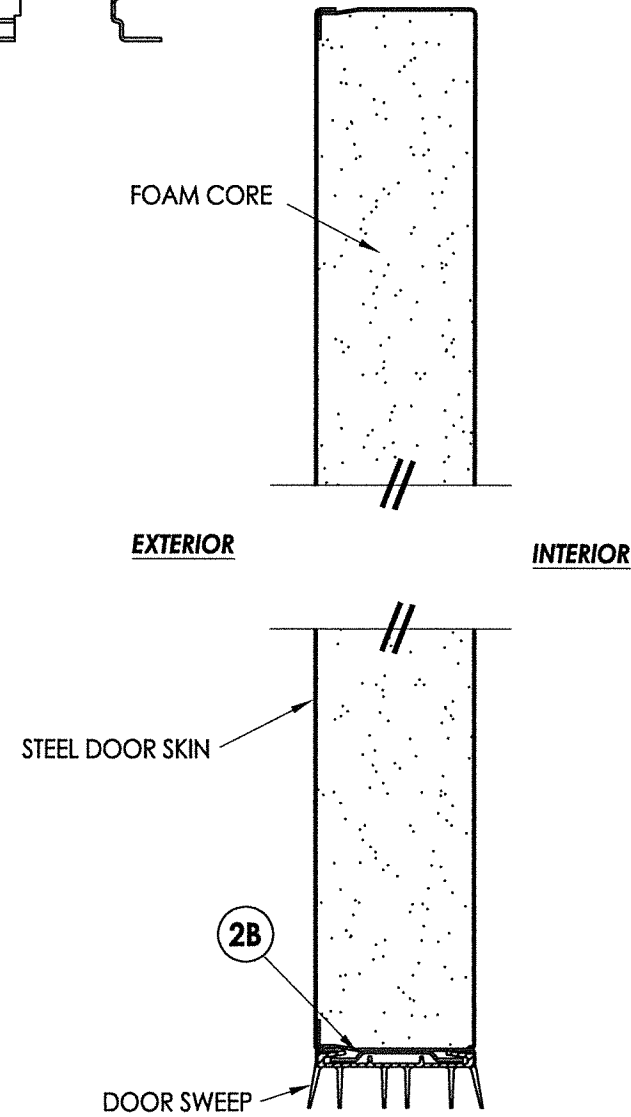
40 7'-0" STEEL DOOR PANEL
Taylor



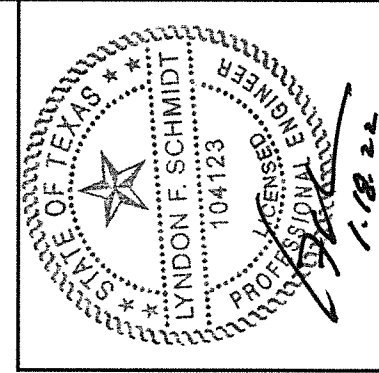
2A HINGE REINFORCEMENT



2B DOOR SWEEP RETAINER



2
2 VERTICAL CROSS SECTION



Documents Prepared By: Lyndon F. Schmidt, P.E.
TEXAS P.E. #104123

RW BUILDING CONSULTANTS, INC.
P.O. Box 230 Vairico FL 33595
Phone No.: 813.659.9197

TEXAS BOARD OF PROFESSIONAL ENGINEERS
CERTIFICATE OF REGISTRATION # F-11852

PRODUCT: IDP
STEEL FRAME (K2A-SERIES)

PART OR ASSEMBLY:

DOOR PANEL DETAILS

| NO. | DATE | REVISIONS | LFS | BY |
|-----|---------|-----------------------------|-----|----|
| 1 | 1/12/22 | UPDATE TO 2018 IBC/IRC CODE | LFS | |

DATE: 5/07/19

SCALE: N.T.S.

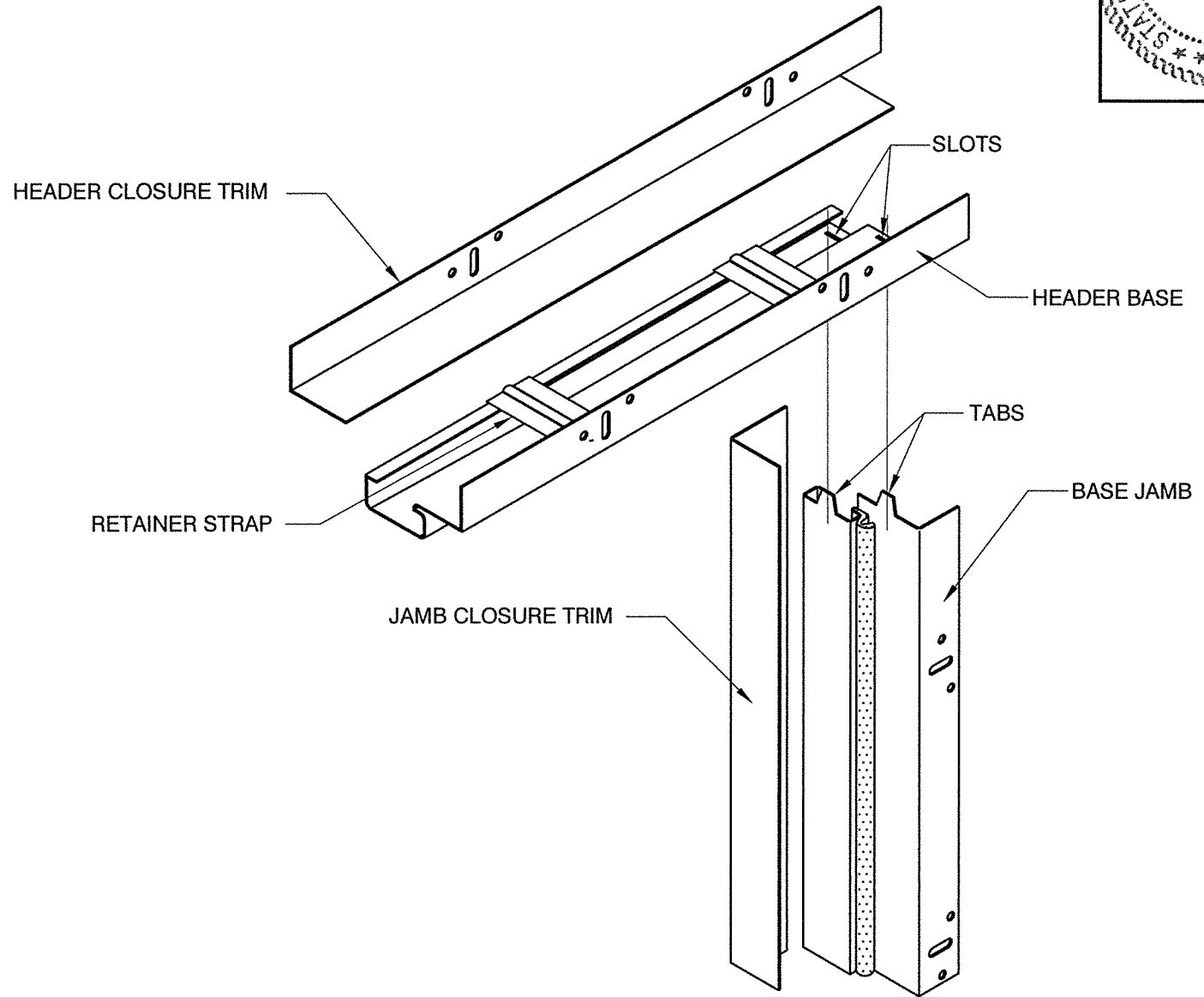
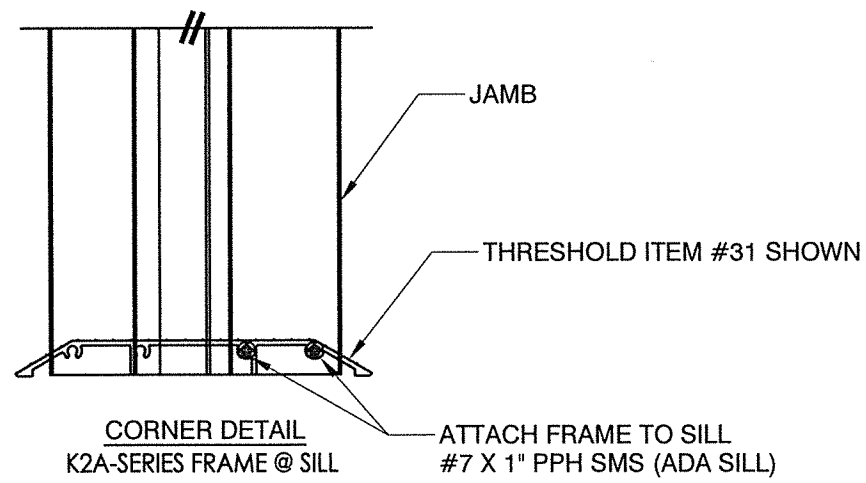
DWG. BY: RW

CHK. BY: LFS

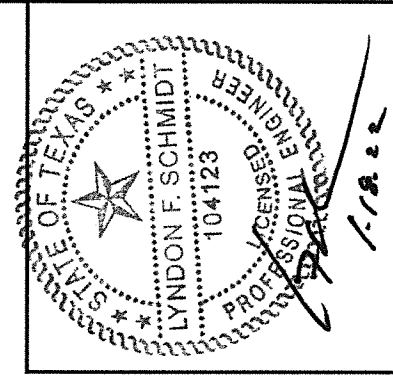
DRAWING NO.: TX-4936

SHEET 2 OF 9

GALVANIZED STEEL DOOR SKIN: 0.020" MIN. THK.
FOAM CORE: POLYURETHANE



CORNER DETAIL
IDP ENTRY-FIT™ ADJUSTABLE
STEEL DOOR FRAME (K2A-SERIES)

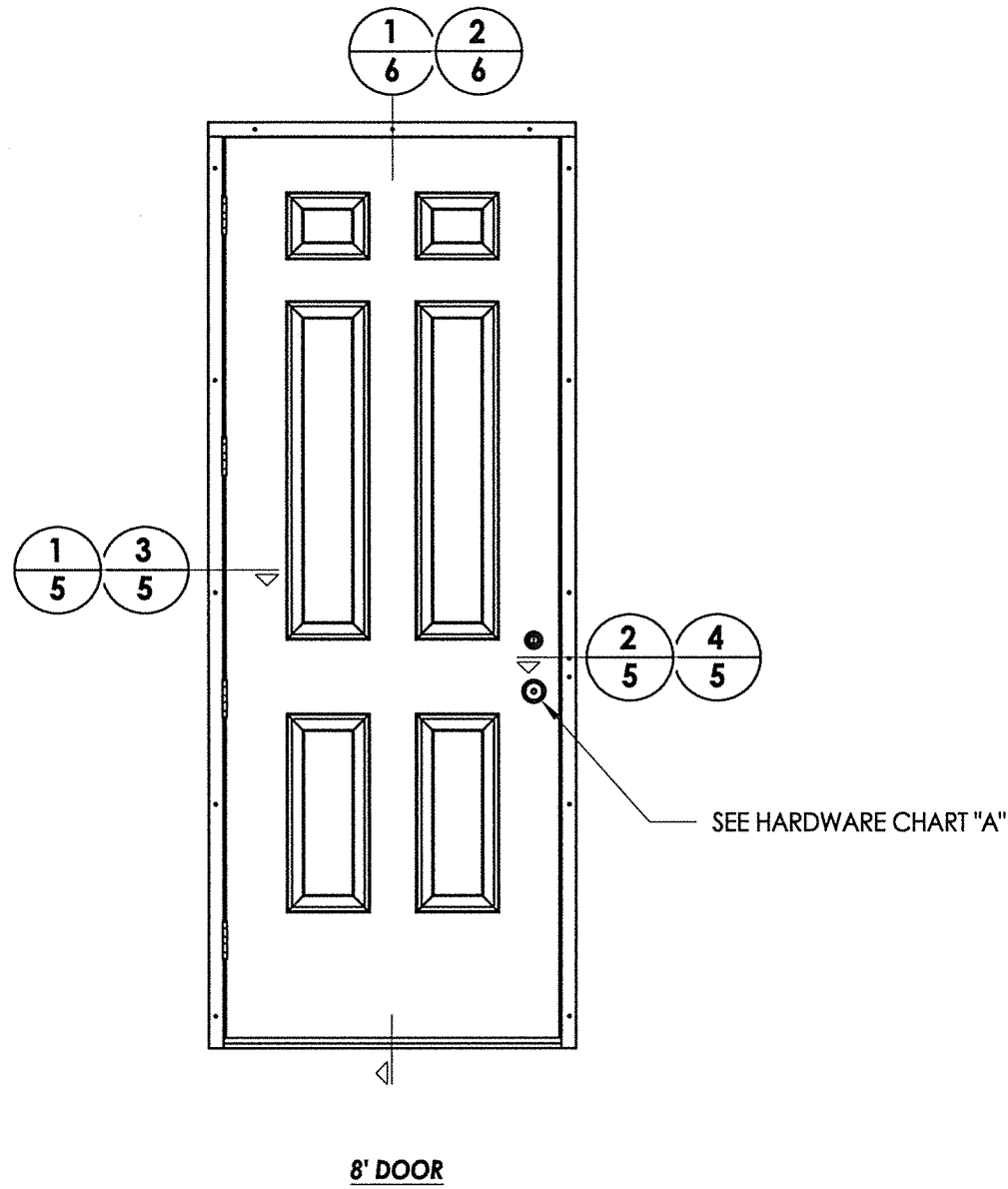


Documents Prepared By: Lyndon F. Schmidt, P.E.
TEXAS P.E. #104123

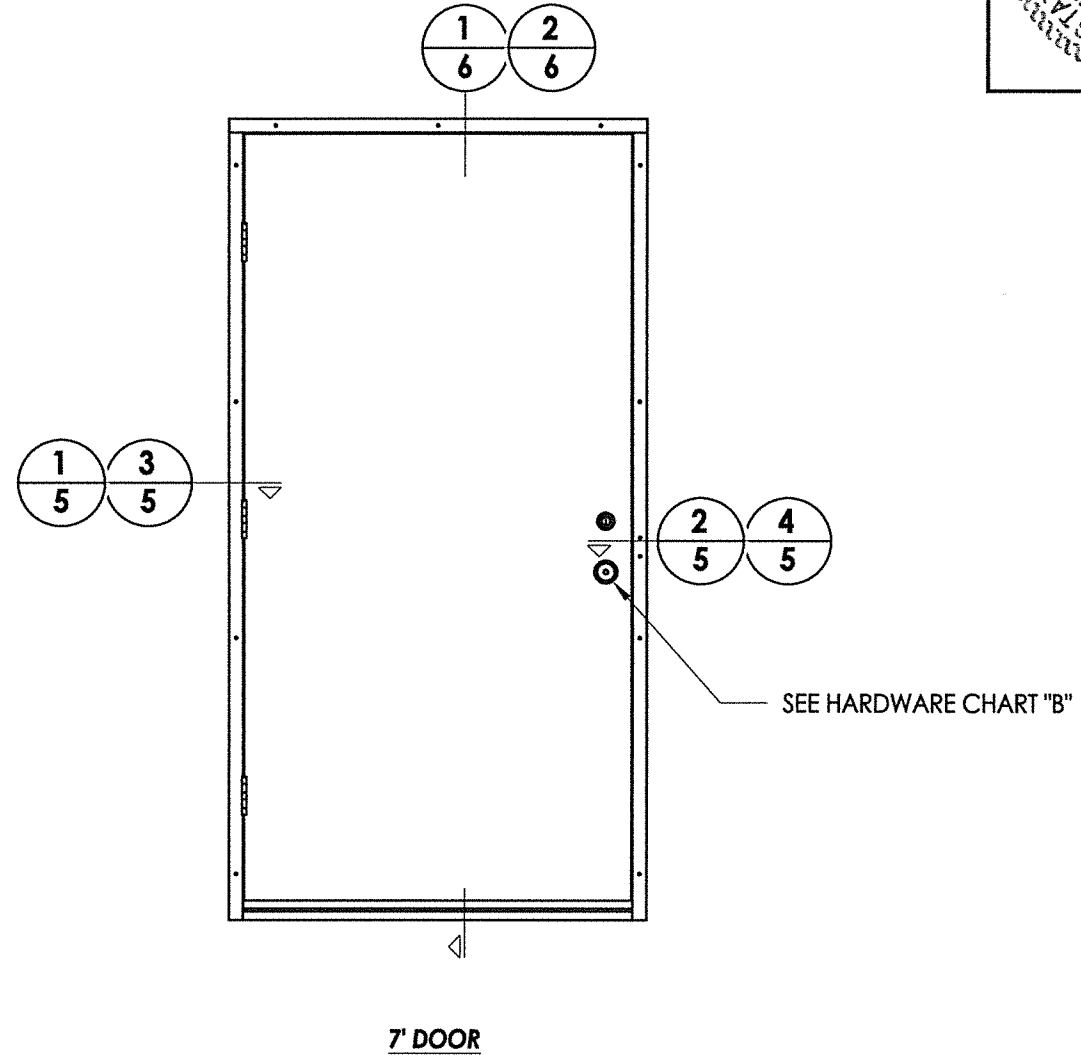
RW BUILDING CONSULTANTS, INC.
P.O. Box 230 Valrico FL, 33595
Phone No.: 813.659.9197

TEXAS BOARD OF PROFESSIONAL ENGINEERS
CERTIFICATE OF REGISTRATION # F-11852

| | | |
|-----------------------------|------------------------------|------|
| PRODUCT: | IDP STEEL FRAME (K2A-SERIES) | |
| PART OR ASSEMBLY: | CORNER DETAIL | |
| NO. | DATE | BY |
| 1 | 1/12/22 | LFS |
| UPDATE TO 2018 IBC/IRC CODE | | |
| REVISIONS | | |
| DATE: | 5/07/19 | |
| SCALE: | N.T.S. | |
| DWG. BY: | RW | |
| CHK. BY: | LFS | |
| DRAWING NO.: | TX-4936 | |
| SHEET | 3 | OF 9 |



| HARDWARE CHART "A" | |
|--------------------|--|
| MANUFACTURER | MODEL |
| SCHLAGE | LEVER: "F" SERIES (F51) DEADBOLT: "B" SERIES (B60N) |



| HARDWARE CHART "B" | |
|--------------------|--|
| MANUFACTURER | MODEL |
| KWIKSET | LOCK: SIGNATURE SERIES DEADBOLT: SIGNATURE SERIES (980) |



Documents Prepared By: Lyndon F. Schmidt, P.E.
TEXAS P.E. #104123

RW BUILDING CONSULTANTS, INC.
P.O. Box 230 Valrico FL 33595
Phone No.: 813.659.9197

TEXAS BOARD OF PROFESSIONAL ENGINEERS
CERTIFICATE OF REGISTRATION # F-11852

PRODUCT: IDP STEEL FRAME (K2A-SERIES)

PART OR ASSEMBLY: ELEVATIONS

| NO. | DATE | REVISIONS |
|-----|---------|-----------------------------|
| 1 | 1/12/22 | UPDATE TO 2018 IBC/IRC CODE |
| | | LFS |
| | | BY |

DATE: 5/07/19

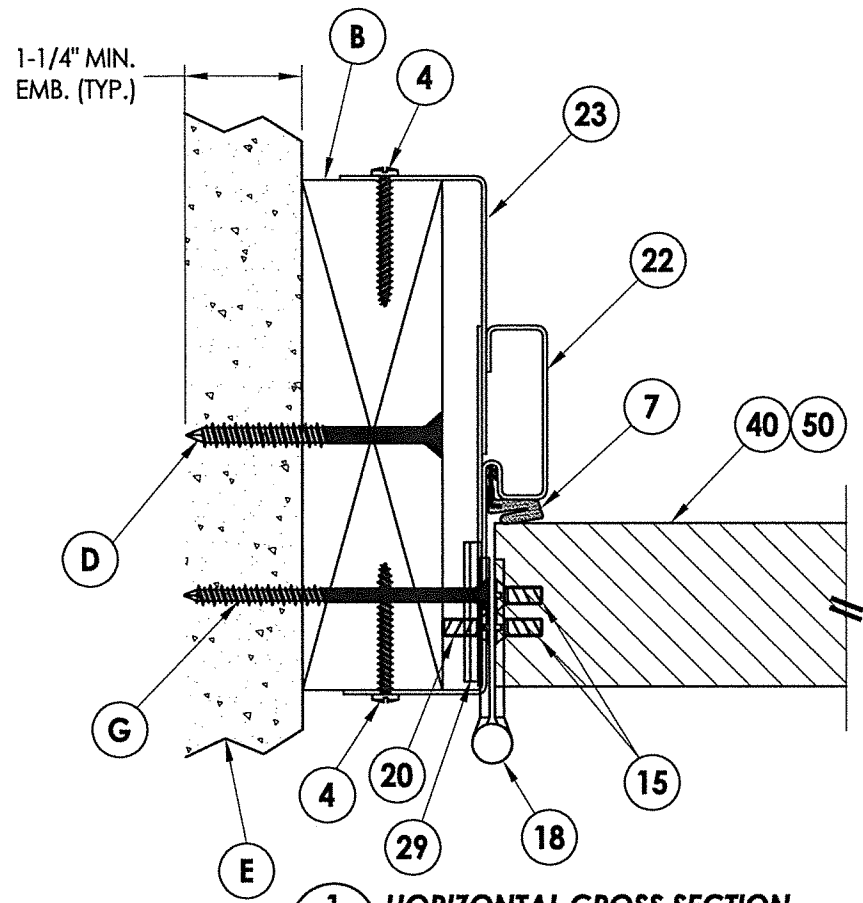
SCALE: N.T.S.

DWG. BY: RW

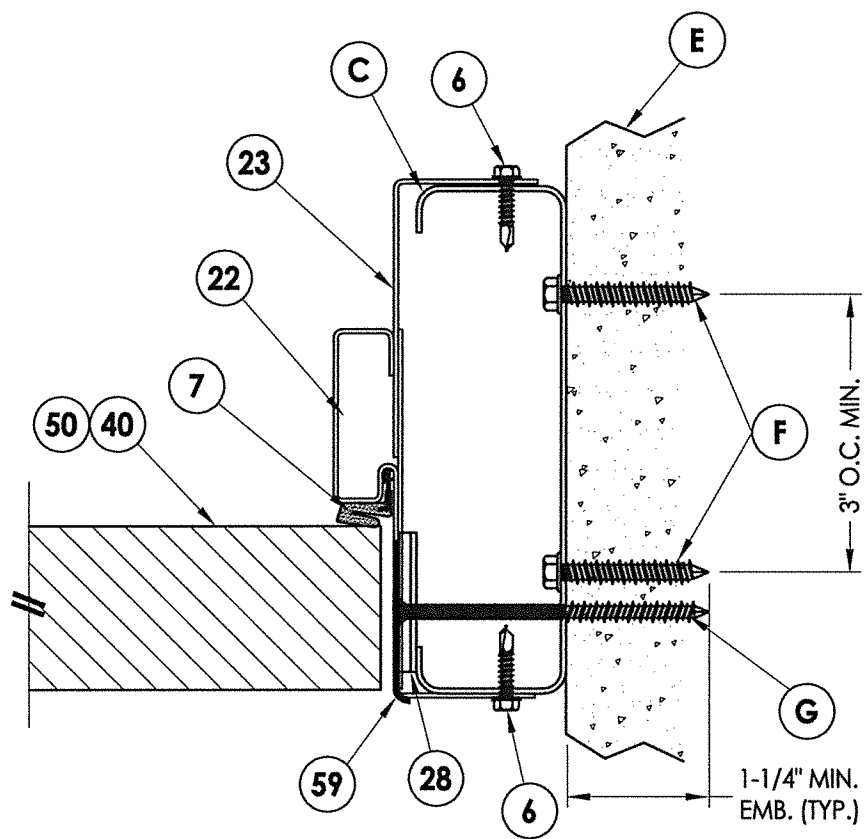
CHK. BY: LFS

DRAWING NO.: TX-4936

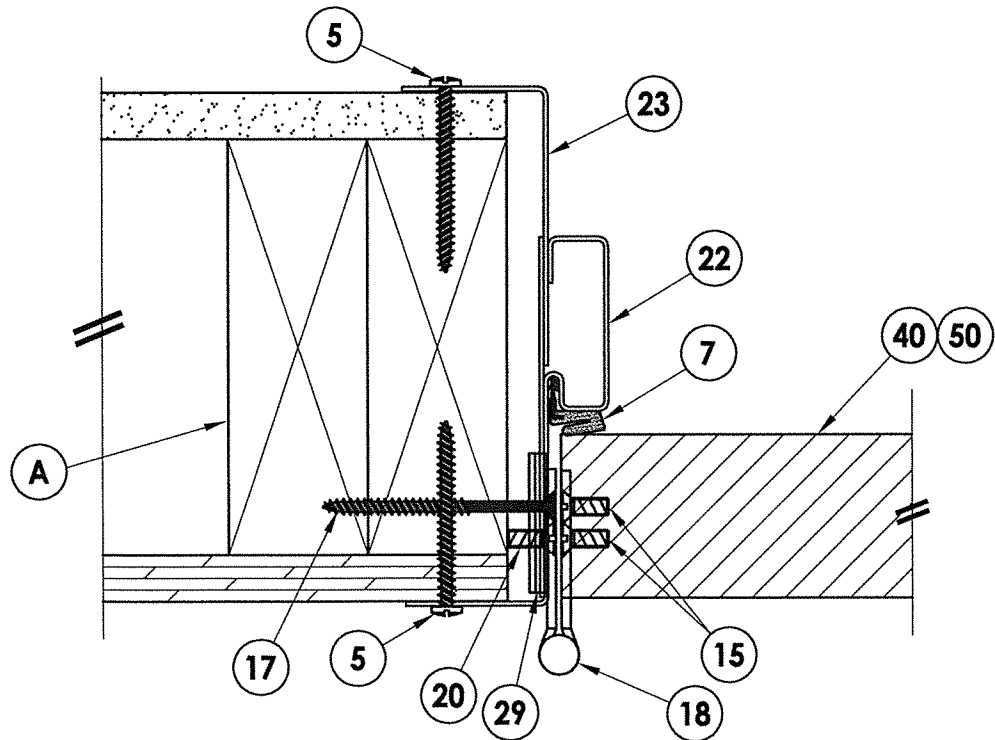
SHEET 4 OF 9



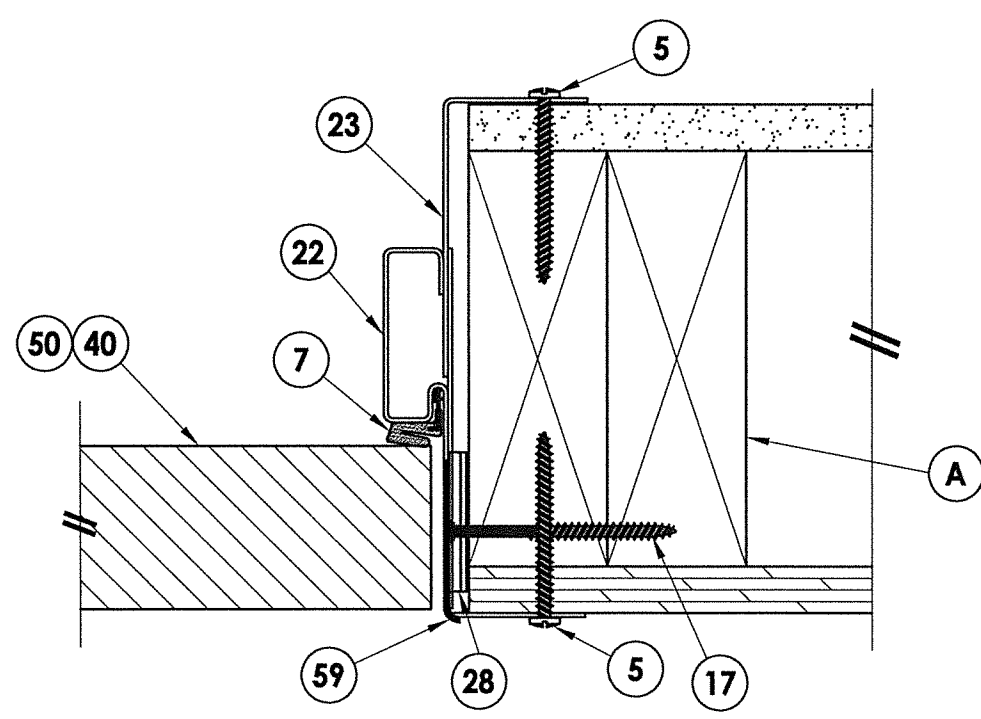
1 HORIZONTAL CROSS SECTION
5 2x Buck Construction
 Outswing Shown (Inswing Similar)



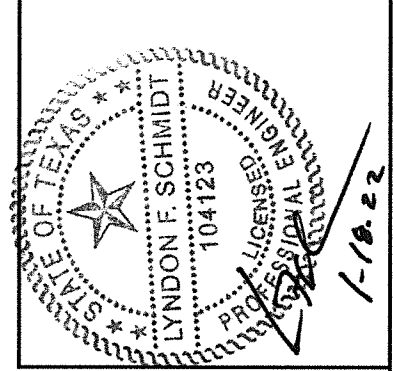
2 HORIZONTAL CROSS SECTION
5 Steel Stud Construction
 Outswing Shown (Inswing Similar)



3 HORIZONTAL CROSS SECTION
5 2x Stud Construction
 Outswing Shown (Inswing Similar)



4 HORIZONTAL CROSS SECTION
5 2x Stud Construction
 Outswing Shown (Inswing Similar)



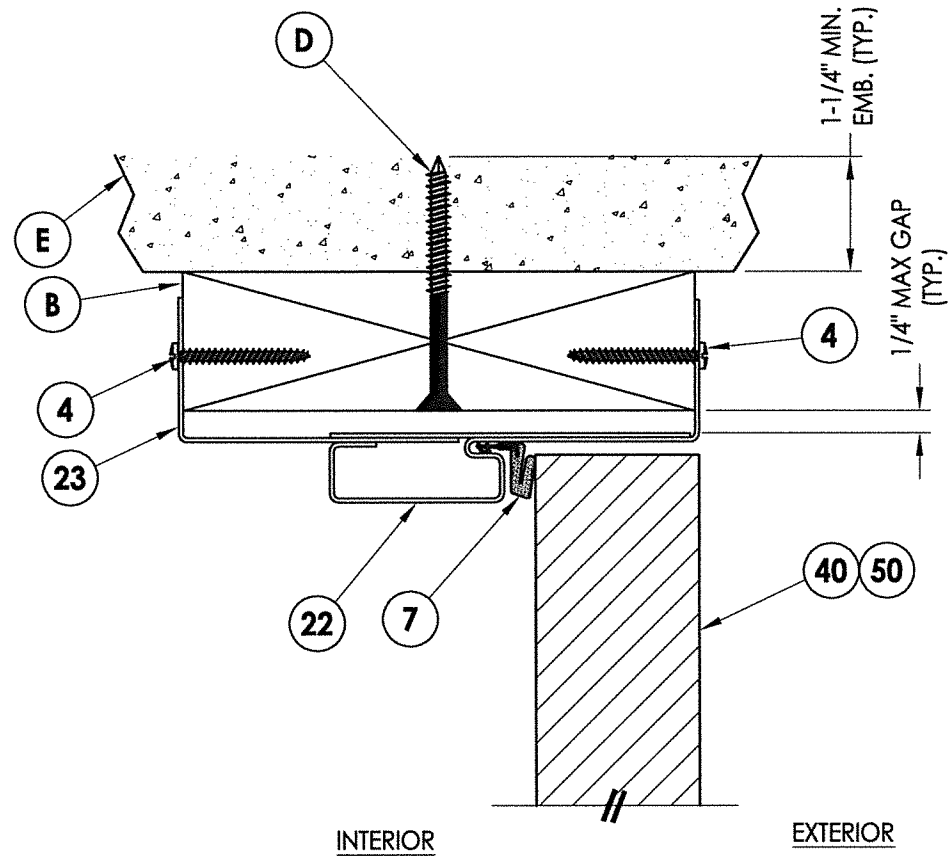
Documents Prepared By: Lyndon F. Schmidt, P.E.
 TEXAS P.E. #104123

RW BUILDING CONSULTANTS, INC.
 P.O. Box 230 Valrico FL, 33595
 Phone No.: 813.659.9197
 TEXAS BOARD OF PROFESSIONAL ENGINEERS
 CERTIFICATE OF REGISTRATION # F-11852

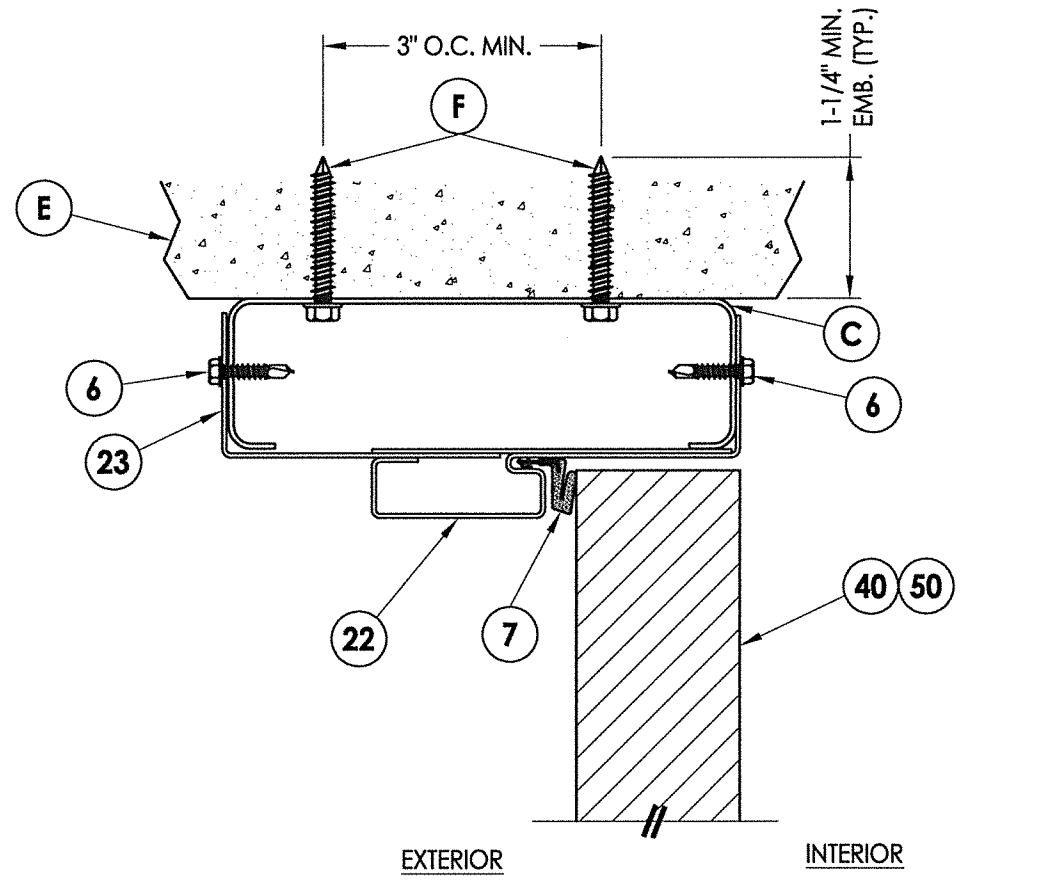
| | |
|---------------------------|------------------------------|
| PRODUCT: | IDP STEEL FRAME (K2A-SERIES) |
| PART OR ASSEMBLY: | |
| HORIZONTAL CROSS SECTIONS | |

| NO. | DATE | REVISIONS |
|-----|---------|-----------------------------|
| 1 | 1/12/22 | UPDATE TO 2018 IBC/IRC CODE |
| | | LFS BY |

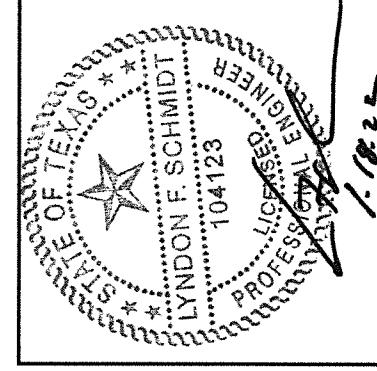
| | |
|--------------|---------|
| DATE: | 5/07/19 |
| SCALE: | N.T.S. |
| DWG. BY: | RW |
| CHK. BY: | LFS |
| DRAWING NO.: | TX-4936 |
| SHEET | 5 OF 9 |



1 VERTICAL CROSS SECTION
6 Outswing Shown



2 VERTICAL CROSS SECTION
6 Inswing Shown



Documents Prepared By: Lyndon F. Schmidt, P.E.
TEXAS P.E. #104123

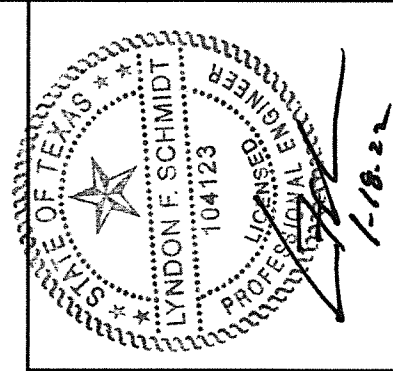
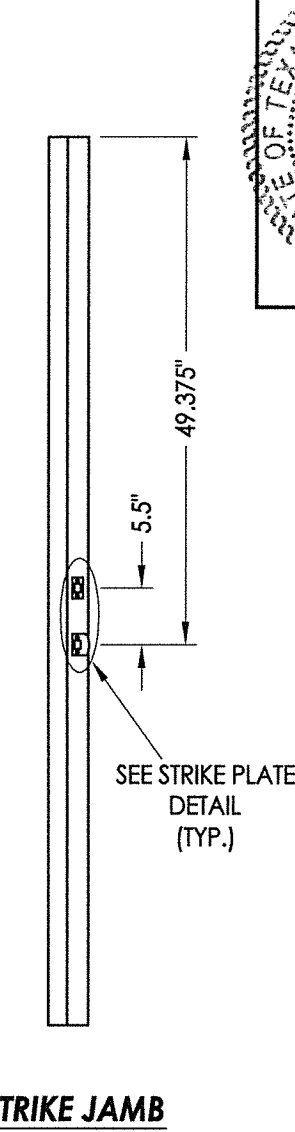
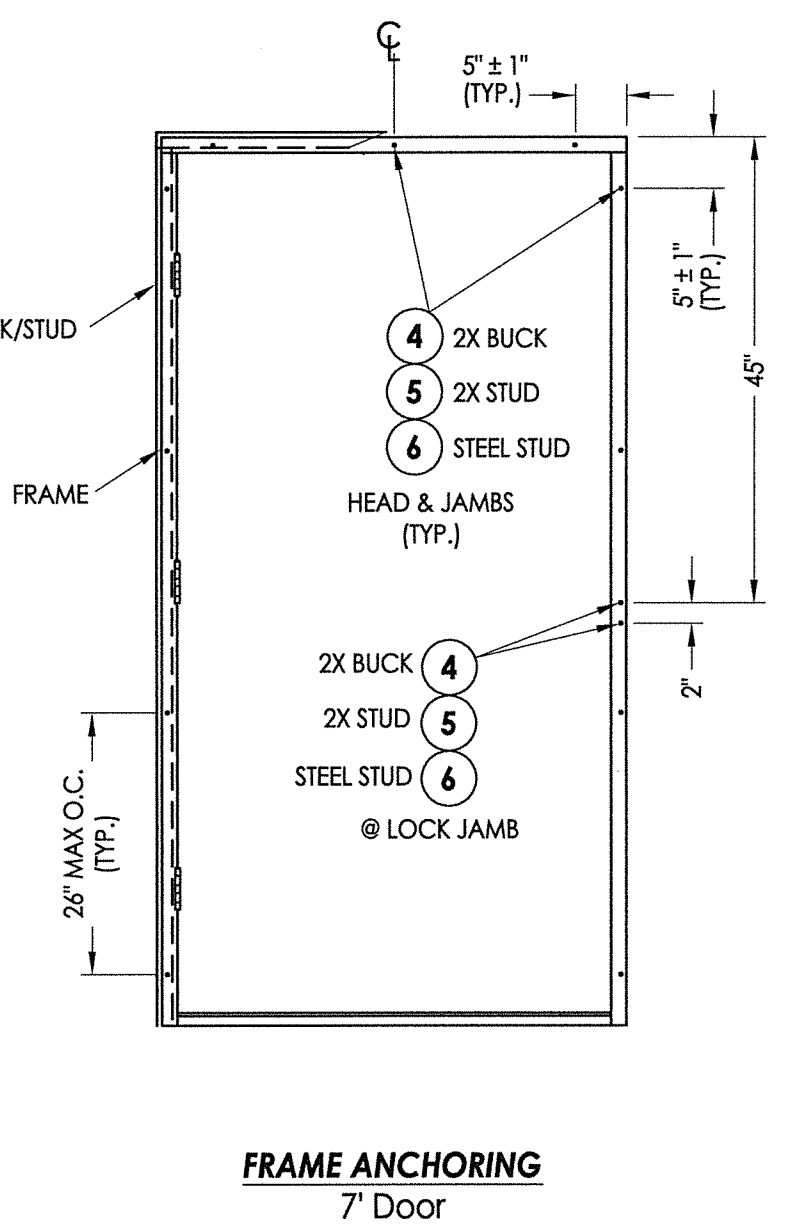
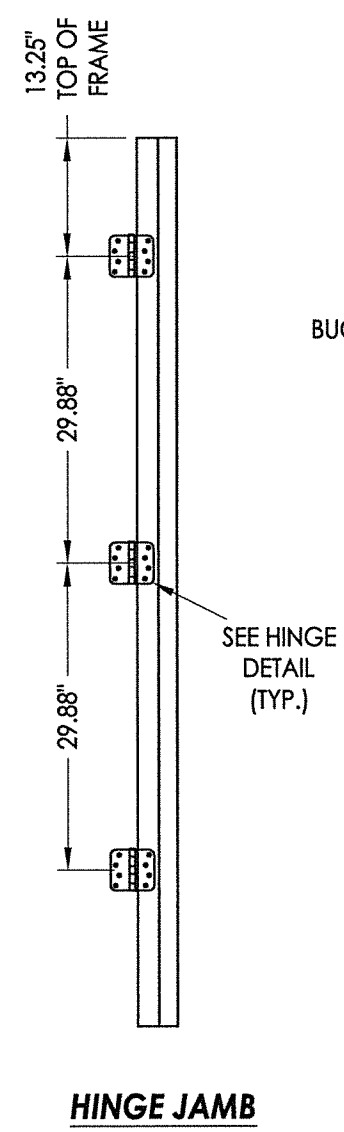
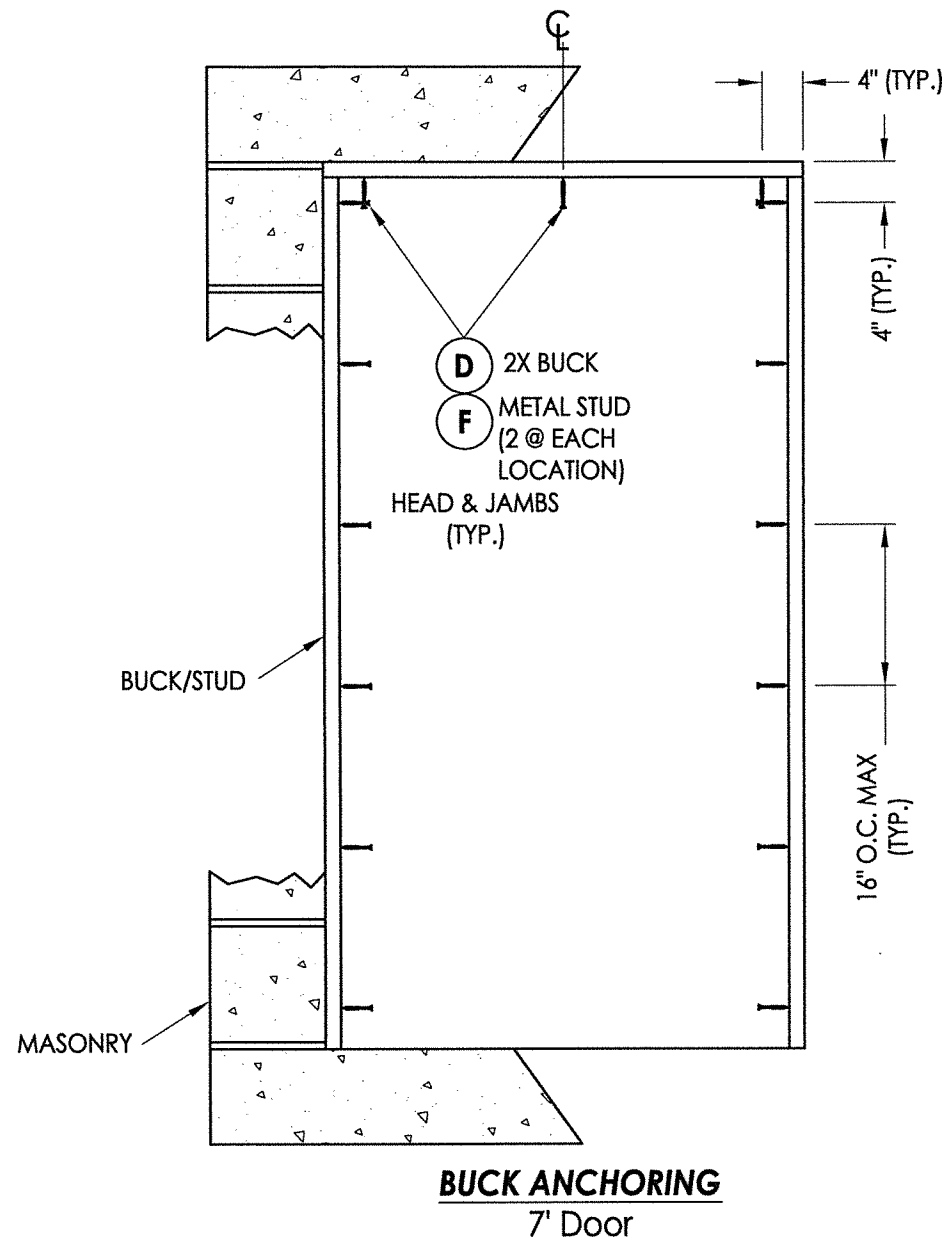
RW BUILDING CONSULTANTS, INC.
P.O. Box 230 Valrico FL, 33595
Phone No.: 813.659.9197

TEXAS BOARD OF PROFESSIONAL ENGINEERS
CERTIFICATE OF REGISTRATION # F-11852

| | |
|-------------------|--------------------------|
| PRODUCT: | IDP |
| | STEEL FRAME (K2A-SERIES) |
| PART OR ASSEMBLY: | |
| | VERTICAL CROSS SECTIONS |

| NO. | DATE | DESCRIPTION | BY |
|-----|---------|-----------------------------|-----|
| 1 | 1/12/22 | UPDATE TO 2018 IBC/IRC CODE | LFS |

| | |
|--------------|---------|
| DATE: | 5/07/19 |
| SCALE: | N.T.S. |
| DWG. BY: | RW |
| CHK. BY: | LFS |
| DRAWING NO.: | TX-4936 |
| SHEET | 6 OF 9 |



Documents Prepared By: Lyndon F. Schmidt, P.E.
 TEXAS P.E. #104123

RW BUILDING CONSULTANTS, INC.
 P.O. Box 230 Vairico FL 33595
 Phone No.: 813.659.9197

TEXAS BOARD OF PROFESSIONAL ENGINEERS
 CERTIFICATE OF REGISTRATION # F-11852

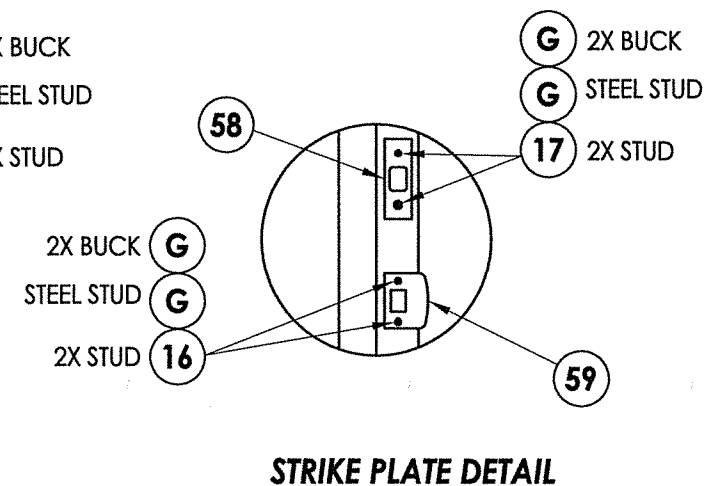
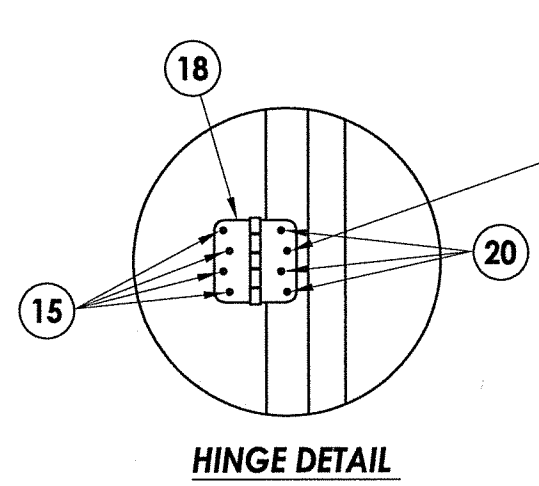
PRODUCT: IDP STEEL FRAME (K2A-SERIES)

PART OR ASSEMBLY: FRAME AND BUCK ANCHORING (7'-0\"/>

- CONCRETE ANCHOR NOTES:**
- Concrete anchor locations at the corners may be adjusted to maintain the min. edge distance to mortar joints.
 - Concrete anchor locations noted as "MAX. ON CENTER" must be adjusted to maintain the min. edge distance to mortar joints, additional concrete anchors may be required to ensure the "MAX. ON CENTER" dimension are not exceeded.
 - Concrete anchor table:

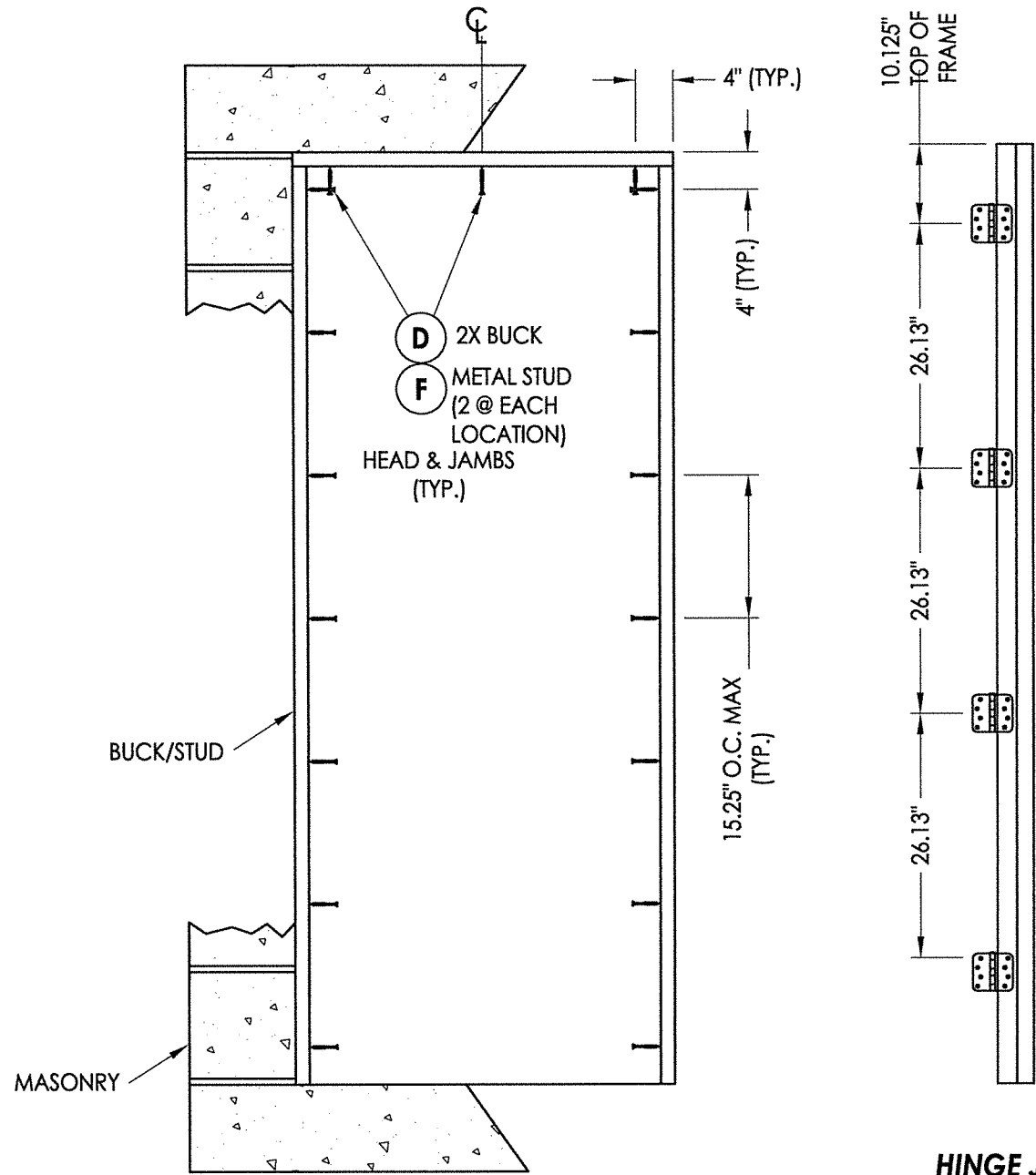
| ANCHOR TYPE | ANCHOR SIZE | MIN. EMBEDMENT | MIN. CLEARANCE TO MASONRY EDGE | MIN. CLEARANCE TO ADJACENT ANCHOR |
|------------------|-------------|----------------|--------------------------------|-----------------------------------|
| ITW TAPCON® | 1/4" | 1-1/4" | 2" | 4" |
| DeWALT ULTRACON+ | 1/4" | 1-1/4" | 2-1/2" | 4" |
| ITW TAPCON® | 3/16" | 1-1/4" | 3" | 1-1/2" |

- WOOD SCREW INSTALLATION NOTES:**
- Maintain a minimum 5/8" edge distance, 1" end distance, & 1" o.c. spacing of wood screws to prevent the splitting of wood.

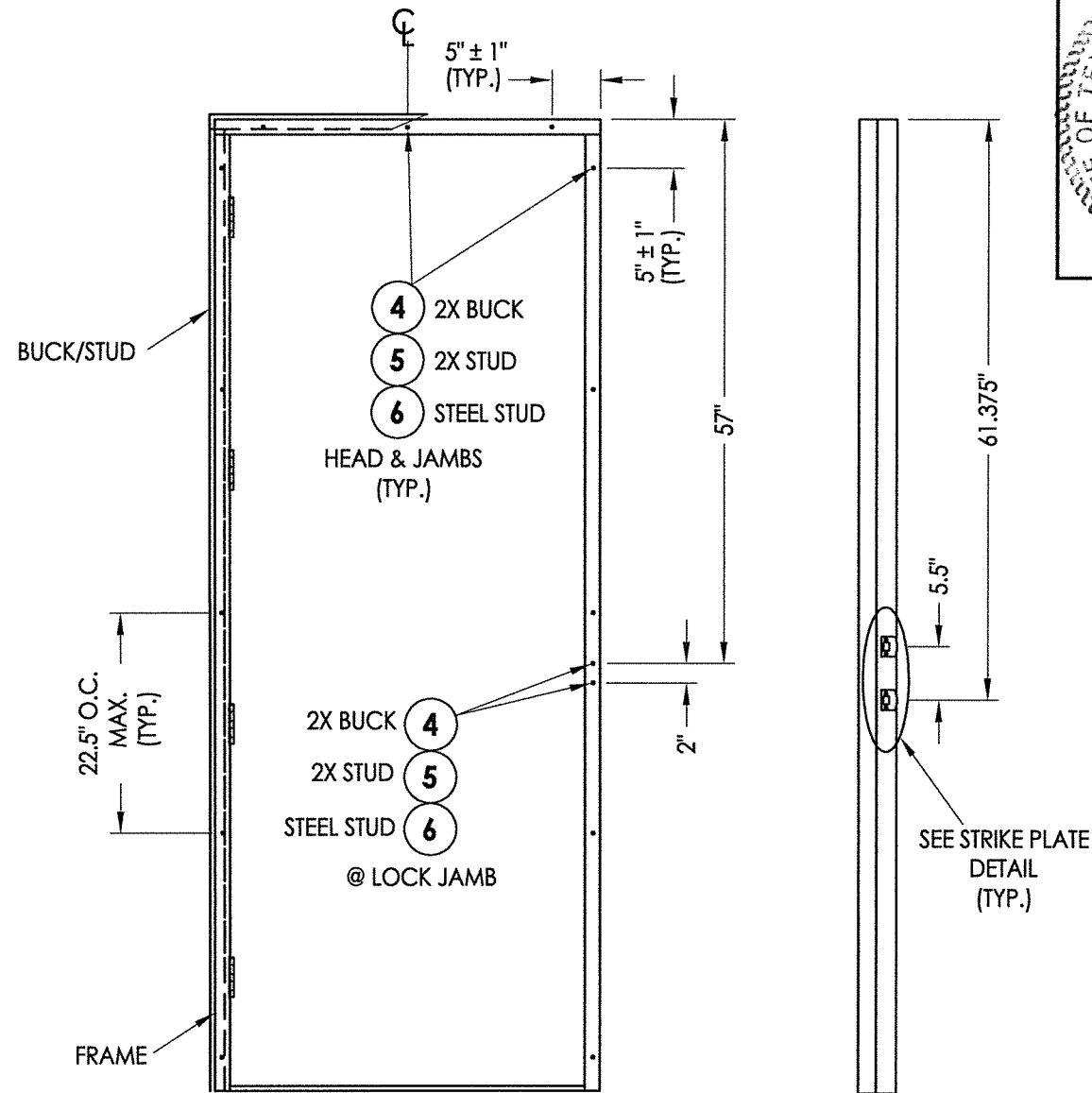


| NO. | DATE | REVISIONS |
|-----|---------|-----------------------------|
| 1 | 1/12/22 | UPDATE TO 2018 IBC/IRC CODE |
| | | LFS |
| | | BY |

DATE: 5/07/19
 SCALE: N.T.S.
 DWG. BY: RW
 CHK. BY: LFS
 DRAWING NO.: TX-4936
 SHEET 7 OF 9

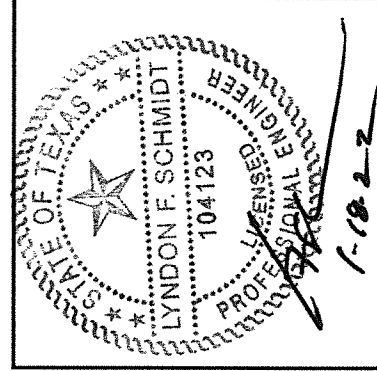
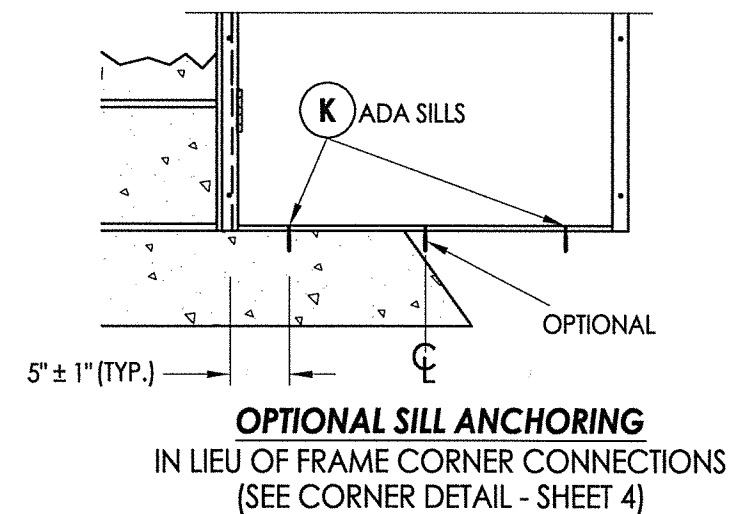
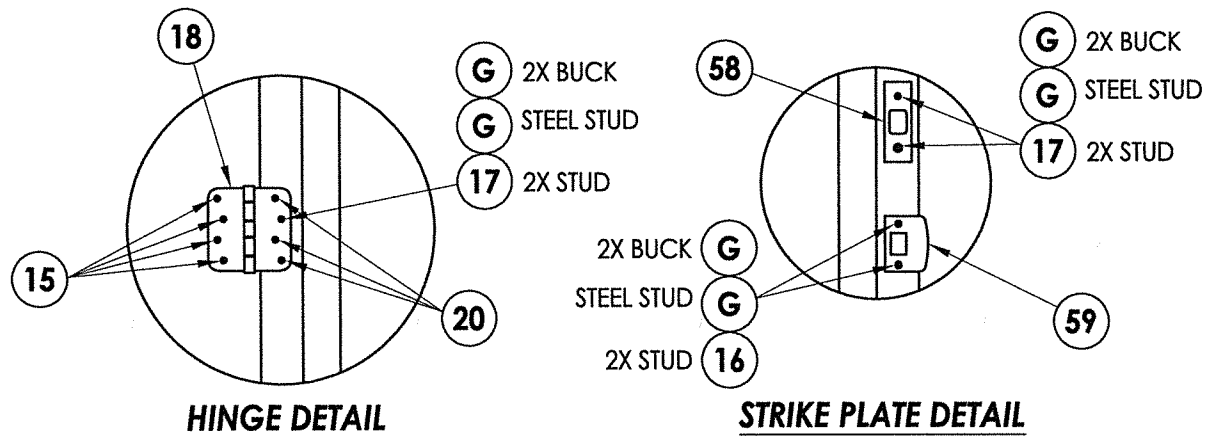


HINGE JAMB



FRAME ANCHORING
8' Door

STRIKE JAMB



Documents Prepared By: Lyndon F. Schmidt, P.E.
TEXAS P.E. #104123

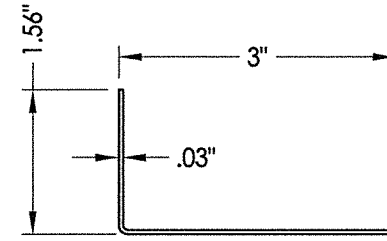
RW BUILDING CONSULTANTS, INC.
P.O. Box 230 Valrico FL 33595
Phone No.: 813.659.9197

TEXAS BOARD OF PROFESSIONAL ENGINEERS
CERTIFICATE OF REGISTRATION # F-11852

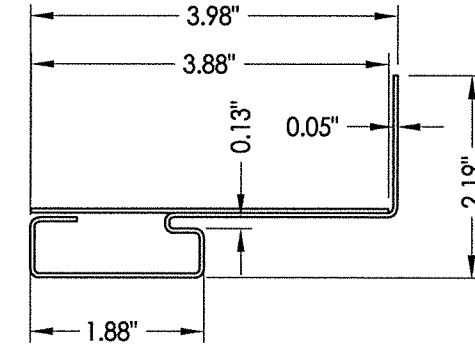
| | |
|-----------------------------|---------------------------------------|
| PRODUCT: | IDP STEEL FRAME (K2A-SERIES) |
| PART OR ASSEMBLY: | FRAME AND BUCK ANCHORING (8'-0" DOOR) |
| NO. | 1 |
| DATE | 1/12/22 |
| UPDATE TO 2018 IBC/IRC CODE | LFS |
| BY | BY |
| REVISIONS | |
| DATE: | 5/07/19 |
| SCALE: | N.T.S. |
| DWG. BY: | RW |
| CHK. BY: | LFS |
| DRAWING NO.: | TX-4936 |
| SHEET | 8 OF 9 |

BILL OF MATERIALS

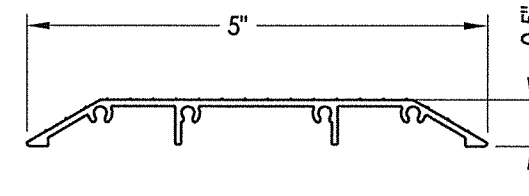
| ITEM # | DESCRIPTION | MATERIAL |
|--------|---|----------|
| A | 2X STUD FRAMING (SG>= 0.42) | WOOD |
| B | 2X BUCK (SG >= 0.42) | WOOD |
| C | METAL STUD (SSMA STUD 550S162-54, Fy = 33 ksi, Fu = 45 ksi) | STEEL |
| D | 1/4" X 2-3/4" DeWALT OR ITW PFH CONCRETE SCREW | STEEL |
| E | MASONRY - 3,000 PSI MIN. CONCRETE CONFORMING TO ACI 301 OR HOLLOW BLOCK CONFORMING TO ASTM C90 OR ASTM A653 STEEL | CONCRETE |
| F | 3/16" X 1-3/4" HWH ITW CONCRETE SCREW | STEEL |
| G | 3/16" X 3-1/4" DeWALT OR ITW PFH CONCRETE SCREW | STEEL |
| H | 1/4" X 2-1/4" DeWALT OR ITW PFH CONCRETE SCREW | STEEL |
| K | 1/4" X 1-3/4" DeWALT OR ITW PFH CONCRETE SCREW | STEEL |
| 4 | #10 X 1-1/2" PPH SMS (1-1/4" MIN. EMBEDMENT) | STEEL |
| 5 | #10 X 2" PPH SMS (1-1/4" MIN. EMBEDMENT) | STEEL |
| 6 | #10 X 3/4" HWH SELF-DRILLING TEK SCREW (3 THREADS MUST PROTRUDE THRU STEEL) | STEEL |
| 7 | WEATHERSTRIP | - |
| 8 | DOOR SWEEP | PVC |
| 15 | 10-24 X 5/8" PFH MS | STEEL |
| 16 | #8 X 2-1/2" PFH WOOD SCREW | STEEL |
| 17 | #10 X 2-1/2" PFH WOOD SCREW | STEEL |
| 18 | 4" X 4" HINGE | STEEL |
| 20 | 10-24 X 1/2" PFH MS | STEEL |
| 22 | IDP (K2A-SERIES) EXTERIOR FRAME (18 GA. - A60 GALVANNEALED STEEL) | STEEL |
| 23 | IDP (K2A-SERIES) INTERIOR FRAME (22 GA. - A60 GALVANNEALED STEEL) | STEEL |
| 28 | LATCH & DEADBOLT REINFORCEMENT | STEEL |
| 29 | HINGE REINFORCEMENT | STEEL |
| 31 | ADA THRESHOLD | ALUM |
| 40 | 7' DOOR - SEE DOOR PANEL DETAILS | - |
| 50 | 8' DOOR - SEE DOOR PANEL DETAILS | - |
| 58 | DEADBOLT STRIKE | STEEL |
| 59 | LATCH STRIKE | STEEL |



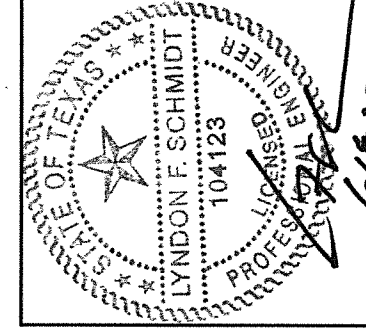
23 INTERIOR FRAME
K2A-SERIES



22 EXTERIOR FRAME
K2A-SERIES



31 ADA THRESHOLD
IDP



Documents Prepared By: Lyndon F. Schmidt, P.E.
TEXAS P.E. #104123

RW BUILDING CONSULTANTS, INC.
P.O. Box 230 Vairco FL 33595
Phone No.: 813.659.9197
TEXAS BOARD OF PROFESSIONAL ENGINEERS
CERTIFICATE OF REGISTRATION # F-11852

PRODUCT: IDP STEEL FRAME (K2A-SERIES)
PART OR ASSEMBLY: BILL OF MATERIALS AND COMPONENTS

| NO. | DATE | DESCRIPTION | LFS | BY |
|-----|---------|-----------------------------|-----|----|
| 1 | 1/12/22 | UPDATE TO 2018 IBC/IRC CODE | | |

DATE: 5/07/19

SCALE: N.T.S.

DWG. BY: RW

CHK. BY: LFS

DRAWING NO.: TX-4936

SHEET 9 OF 9