

3/30/2022 5:33 PM
s:\projects\republic-doors\dl418 single flush inswing door (id 7119).rvt\dl418 single flush inswing door (id 7119).dwg

REPUBLIC DOORS AND FRAMES

DL418 SINGLE FLUSH INSWING STEEL DOOR



155 REPUBLIC DRIVE
MCKENZIE, TN 38201
PH: (800) 799-3667 FX: (731) 352-2556

INSTALLATION NOTES:

1. ONE (1) INSTALLATION ANCHOR IS REQUIRED AT EACH ANCHOR LOCATION SHOWN, UNLESS OTHERWISE STATED.
2. THE NUMBER OF INSTALLATION ANCHORS DEPICTED IS THE MINIMUM NUMBER OF ANCHORS TO BE USED FOR PRODUCT INSTALLATION.
3. INSTALL INDIVIDUAL INSTALLATION ANCHORS WITHIN A TOLERANCE OF ±1/16 INCH OF THE DEPICTED LOCATION IN THE ANCHOR LAYOUT DETAIL (I.E., WITHOUT CONSIDERATION OF TOLERANCES). TOLERANCES ARE NOT CUMULATIVE FROM ONE INSTALLATION ANCHOR TO THE NEXT.
4. FOR INSTALLATION INFORMATION AND ANCHOR LAYOUTS ON JAMBS AND SILL, REFER TO SHEET 5.
5. MINIMUM EMBEDMENT AND EDGE DISTANCE EXCLUDE WALL FINISHES, INCLUDING BUT NOT LIMITED TO STUCCO, FOAM, BRICK VENEER, AND SIDING.
6. INSTALLATION ANCHORS AND ASSOCIATED HARDWARE MUST BE MADE OF CORROSION RESISTANT MATERIAL OR HAVE A CORROSION RESISTANT COATING.
7. FOR GROUT FILLED BLOCK, DO NOT INSTALL INSTALLATION ANCHORS INTO MORTAR JOINTS. EDGE DISTANCE IS MEASURED FROM FREE EDGE OF BLOCK OR EDGE OF MORTAR JOINT INTO FACE SHELL OF BLOCK.
8. INSTALLATION ANCHORS SHALL BE INSTALLED IN ACCORDANCE WITH ANCHOR MANUFACTURER'S INSTALLATION INSTRUCTIONS, AND ANCHORS SHALL NOT BE USED IN SUBSTRATES WITH STRENGTHS LESS THAN THE MINIMUM STRENGTH SPECIFIED BY THE ANCHOR MANUFACTURER.
9. INSTALLATION ANCHOR CAPACITIES FOR PRODUCTS HEREIN ARE BASED ON SUBSTRATE MATERIALS WITH THE FOLLOWING PROPERTIES:
 - A. WOOD - MINIMUM SPECIFIC GRAVITY OF 0.42.
 - B. CONCRETE -MINIMUM COMPRESSIVE STRENGTH OF 3000 PSI.
 - C. GROUT-FILLED CMU - UNIT STRENGTH CONFORMS TO ASTM C-90 & GROUT CONFORMS TO ASTM C 476. GROUT SHALL HAVE MINIMUM COMPRESSIVE STRENGTH OF 2000 PSI.

GENERAL NOTES:

1. THE PRODUCT SHOWN HEREIN IS DESIGNED AND MANUFACTURED TO COMPLY WITH THE 2018 INTERNATIONAL BUILDING CODE (IBC) AND INTERNATIONAL RESIDENTIAL CODE (IRC) AND HAS BEEN EVALUATED ACCORDING TO THE FOLLOWING:
 - TAS 201-94
 - TAS 202-94
 - TAS 203-94
 - ASTM E330-14
 - ASTM E283-04(2012)
 - ASTM E1886-13a
 - ASTM E1996-14a
2. ADEQUACY OF THE EXISTING STRUCTURAL CONCRETE/MASONRY, 2X AND STEEL STUD FRAMING AS A MAIN WIND FORCE RESISTING SYSTEM CAPABLE OF WITHSTANDING AND TRANSFERRING APPLIED PRODUCT LOADS TO THE FOUNDATION IS THE RESPONSIBILITY OF THE ENGINEER OR ARCHITECT OF RECORD FOR THE PROJECT OF INSTALLATION.
3. 2X BUCKS (WHEN USED) SHALL BE DESIGNED AND ANCHORED TO PROPERLY TRANSFER ALL LOADS TO THE STRUCTURE. BUCK DESIGN AND INSTALLATION IS THE RESPONSIBILITY OF THE ENGINEER OR ARCHITECT OF RECORD FOR THE PROJECT OF INSTALLATION.
4. THE INSTALLATION DETAILS DESCRIBED HEREIN ARE GENERIC AND MAY NOT REFLECT ACTUAL CONDITIONS FOR A SPECIFIC SITE IF SITE CONDITIONS CAUSE INSTALLATION TO DEVIATE FROM THE REQUIREMENTS DETAILED HEREIN, A LICENSED ENGINEER OR ARCHITECT SHALL PREPARE SITE SPECIFIC DOCUMENTS FOR USE WITH THIS DOCUMENT.
5. APPROVED IMPACT PROTECTIVE SYSTEM **IS NOT REQUIRED** TO PROTECT THIS PRODUCT IN AREAS REQUIRING IMPACT RESISTANCE.
6. DOOR MATERIAL: STEEL 18 GAUGE (MIN. 0.047")
FRAME MATERIAL: STEEL 16 GAUGE (MIN. 0.053")
FY MIN. = 45.35 KSI
7. DESIGNATION "X" STANDS FOR THE FOLLOWING:
X: OPERABLE PANEL
8. STEEL COMPONENTS SHALL BE COATED OR PROVIDED WITH CORROSION RESISTANCE PROTECTION.
9. ALTERNATE LOCKING AND OPERATING HARDWARE MAY BE USED SUCH THEY ARE CURRENTLY APPROVED UNDER A SEPARATE APPROVAL. INSTALLATION SHALL MAINTAIN THE MINIMUM REQUIREMENTS & LIMITATIONS OF USE OF THE SEPARATE COMPONENT APPROVAL AND THE DETAILS HEREIN. THE LESSER DESIGN PRESSURE AND RATING OF THE COMPONENT APPROVAL AND APPROVAL HEREIN SHALL GOVERN.

STEEL DOOR CONSTRUCTION:

THE OVERALL PANEL THICKNESS IS 1 3/4 INCH THICK. THE DOOR HINGE AND LOCK CHANNELS ARE 1.677" X 0.60" X 82.875" INCH LONG AND ARE CONSTRUCTED FROM 16 GAUGE (MIN. 0.053") COLD-ROLLED STEEL. THE DOOR TOP AND BOTTOM END CHANNELS ARE 1.677" X 0.60" X 35.563" WIDE AND ARE CONSTRUCTED FROM 16 GAUGE (MIN. 0.053") COLD-ROLLED STEEL. THE DOOR SKINS / FACE SHEETS ARE CONSTRUCTED OF **18 GAUGE** (MIN. 0.047") MINIMUM COLD-ROLLED STEEL AND ATTACHED TO THE END, HINGE AND LOCK CHANNELS. THE DOOR CORE IS CONSTRUCTED OF TYPE 99-0-3/4 KRAFT PAPER HONEYCOMB CORE OR 1 PCF POLYSTYRENE AND ATTACHED TO THE FACES WITH GLUE. THE DOOR HINGE REINFORCEMENTS ARE 1.375" X 4.5" AND ARE CONSTRUCTED FROM 9 GAUGE (MIN. 0.132") COLD-ROLLED STEEL. THE DORMA ML9000 EL/EU MORTISE LOCK REINFORCEMENTS ARE 5.875" X 18" CONSTRUCTED FROM 14 GAUGE (MIN. 0.072") COLD-ROLLED STEEL AND 9" X 1.25" CONSTRUCTED FROM 16 GAUGE (MIN. 0.053") COLD-ROLLED STEEL. THE SAFLOK MT MORTISE LOCK REINFORCEMENT IS 5.875" X 18" CONSTRUCTED FROM 14 GAUGE (MIN. 0.072") COLD-ROLLED STEEL. THE DORMA CL853D CYLINDRICAL LOCK REINFORCEMENT IS 3" X 2.5" CONSTRUCTED FROM 16 GAUGE (MIN. 0.053") COLD-ROLLED STEEL. THE DORMA CL753D CYLINDRICAL LOCK REINFORCEMENT IS 5.875" X 18" CONSTRUCTED FROM 14 GAUGE (MIN. 0.072") COLD-ROLLED STEEL.

FRAME CONSTRUCTION:

THE DOOR FRAMES ARE CONSTRUCTED FROM 16 GAUGE (MIN. 0.053") COLD-ROLLED STEEL. THE CORNERS ARE MITERED KNOCK DOWN MECHANICALLY FASTENED. THE DOOR FRAME CORNER REINFORCEMENTS ARE KNOCK DOWN. THE DOOR FRAME HINGES ARE PBB 4.5" X 4.5" X 0.134" FULL MORTISE BUTT-TYPE STANDARD WEIGHT HINGES. THE DOOR FRAME HINGE REINFORCEMENTS ARE 7.50" X 1.625" AND ARE CONSTRUCTED OF 9 (MIN. 0.132") GAUGE COLD/HOT-ROLLED STEEL. THE DOOR FRAME BASE ANCHORS ARE 1.875" X 1.875" AND ARE CONSTRUCTED OF 16 GAUGE (MIN. 0.053") FORMED STEEL.

TABLE OF CONTENTS	
SHEET	SHEET DESCRIPTION
1	INSTALLATION & GENERAL NOTES
2	CYLINDRICAL LOCK ELEVATIONS & DETAILS
3	MORTISE LOCK ELEVATIONS & DETAILS
4	ANCHOR LAYOUT
5	VERTICAL SECTIONS
6	HORIZONTAL SECTIONS
7	CORNER ASSEMBLY & COMPONENTS
8	BILL OF MATERIALS & COMPONENTS

DESIGN PRESSURE RATING FOR FLUSH DOOR ASSEMBLY		
DESIGN PRESSURE ALL SIZES		MISSILE IMPACT RATING
+80/-80 PSF	* WITHOUT WATER INFILTRATION	LARGE & SMALL MISSILE IMPACT RATED

*UNIT SHALL BE INSTALLED AT LOCATION PROTECTED BY OVERHANG SUCH THE OVERHANG RATIO (OH) = OH LENGTH/OH HEIGHT GREATER THAN 1.0 WHERE WATER INFILTRATION IS REQUIRED.

TITLE: DL 418 FLUSH INSWING STEEL DOOR
INSTALLATION & GENERAL NOTES

PREPARED BY: BUILDING DROPS, INC.
398 E. DANIA BEACH BLVD., STE. 338
DANIA BEACH, FL 33004
PH: (954) 399-8478
FAX: (954) 4744-4738
WEB: www.buildingdrops.com

REMARKS	BY	DATE
2018 IBC UPDATE	CA	3.28.22

THE INSTALLATION DETAILS DESCRIBED HEREIN ARE GENERIC AND MAY NOT REFLECT ACTUAL CONDITIONS FOR A SPECIFIC SITE. IF SITE CONDITIONS CAUSE INSTALLATION TO DEVIATE FROM THE REQUIREMENTS DETAILED HEREIN, A LICENSED ENGINEER OR ARCHITECT SHALL PREPARE SITE SPECIFIC DOCUMENTS FOR USE WITH THIS DOCUMENT.

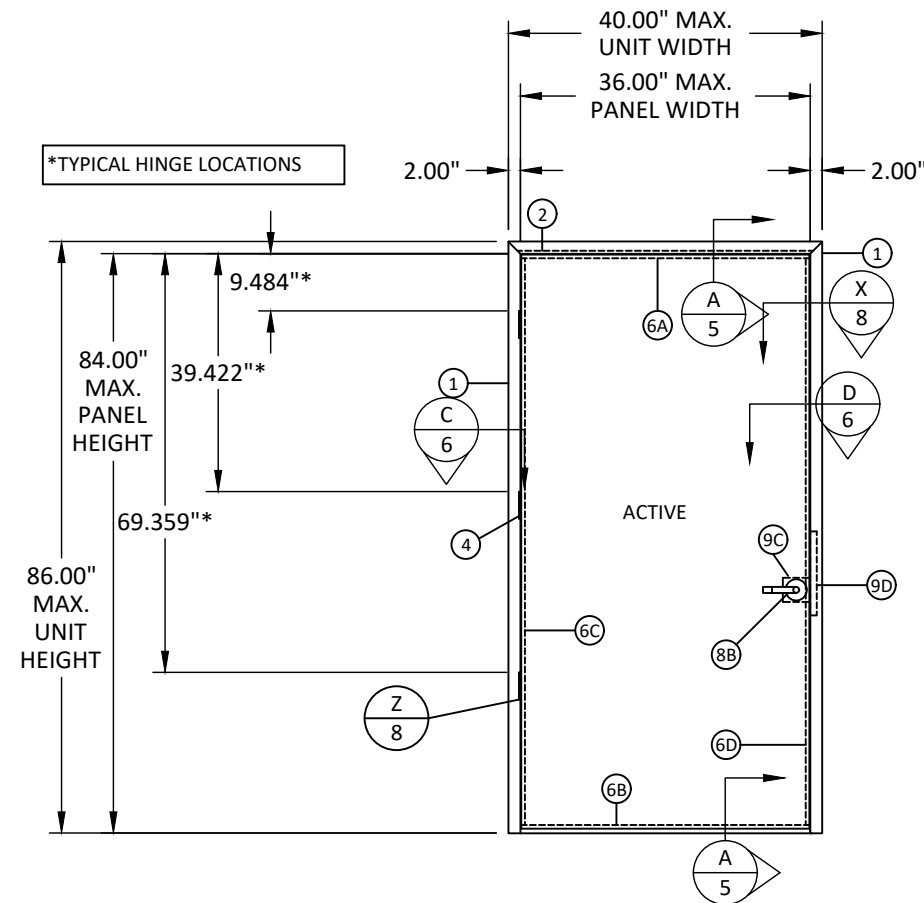


DATE: 03.17.17	
DWG. BY: MSS	CHK. BY: HFN
SCALE: NTS	
DWG. #: RDF021	

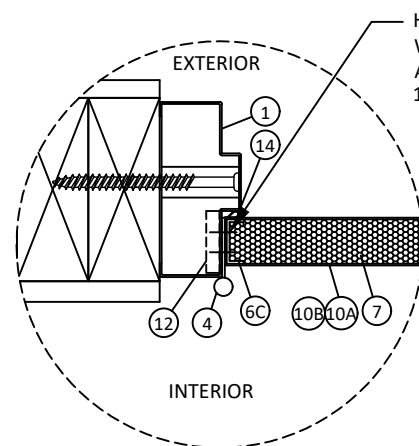
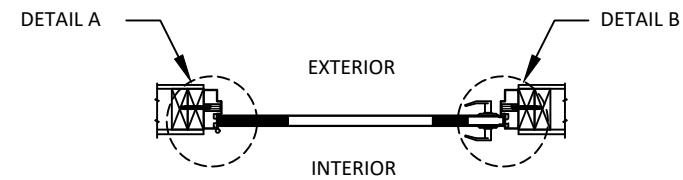
SHEET: 1 OF 8

s:\projects\republic doors\dl-22-0116 rdi submittal - dr551, dr999, dr1000, dr1001, dr1002\dwgs\6. dl418 single flush inswing door (id 7119)\rd021.dl418 single flush steel door.dwg 3/30/2022 5:33 PM

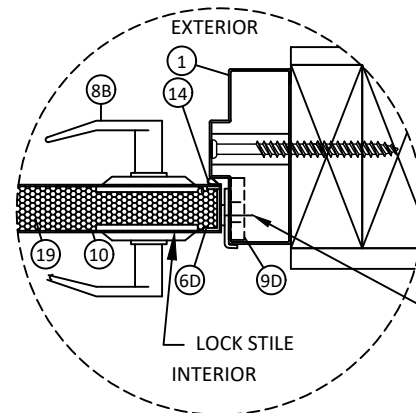
*FASTENERS SHOWN ARE TYPICAL/MINIMUM



**ELEVATION FLUSH
CYLINDRICAL LOCK
(IN SWING DOOR - INTERIOR VIEW)**



HINGES SECURED TO FRAME
W/ (4) 1/2" 10-24 MS SCREWS
AND TO DOOR W/ (4) 1/2" X
10-24 MS SCREWS



STRIKE FASTENED WITH (2)
1" x 12-24 MS

DETAIL A
(SEE SHEET 6)

DETAIL B
(SEE SHEET 6)



155 REPUBLIC DRIVE
MCKENZIE, TN 38201
PH: (800) 799-3667 FX: (731) 352-2556

TITLE: DL 418 FLUSH INSWING
STEEL DOOR
CYLINDRICAL LOCK ELEVATIONS
& DETAILS

PREPARED BY:
BUILDING DROPS, INC.
398 E. DANIA BEACH BLVD., STE. 338
DANIA BEACH, FL 33004
PH: (954) 399-8478
FAX: (954) 744-4738
WEB: www.buildingdrops.com



REMARKS	BY	DATE
2018 IBC UPDATE	CA	3.28.22

THE INSTALLATION DETAILS DESCRIBED HEREIN ARE GENERIC AND MAY NOT REFLECT ACTUAL CONDITIONS FOR A SPECIFIC SITE. IF SITE CONDITIONS CAUSE INSTALLATION TO DEVIATE FROM THE REQUIREMENTS DETAILED HEREIN, A LICENSED ENGINEER OR ARCHITECT SHALL PREPARE SITE SPECIFIC DOCUMENTS FOR USE WITH THIS DOCUMENT.

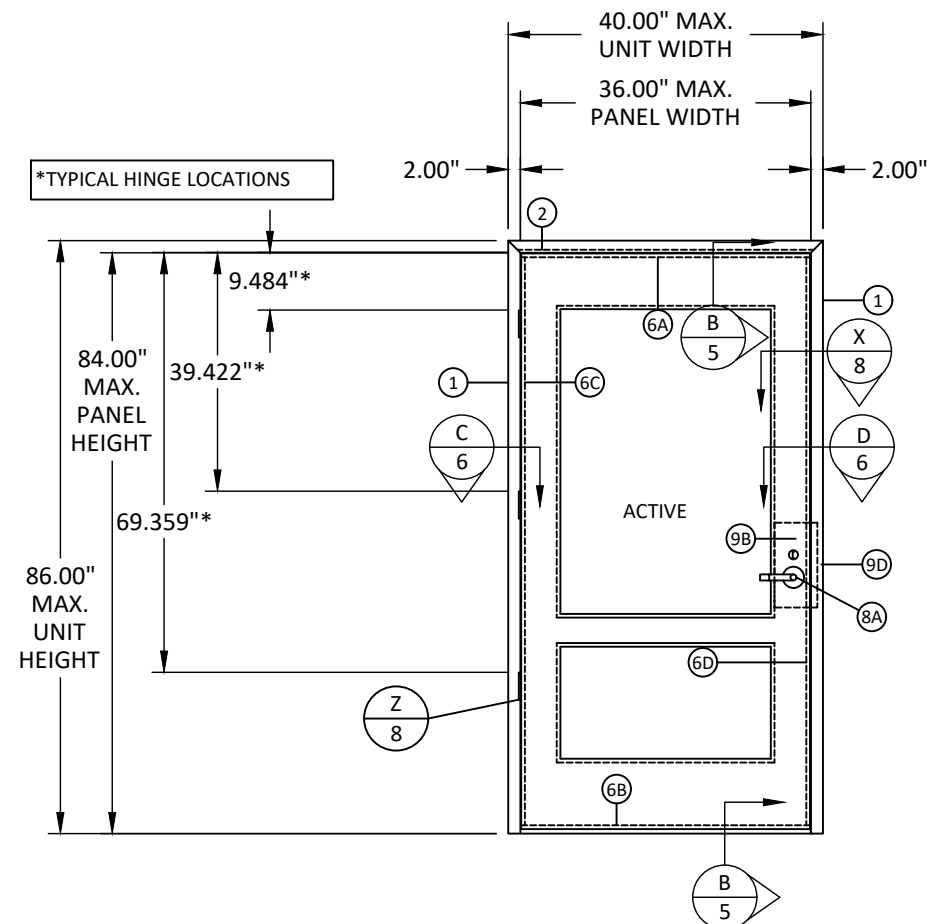


HERMES F. NORERO, P.E.
FLORIDA P.E. No 73778
BUILDING DROPS, INC
398 E. DANIA BEACH BLVD. # 338
DANIA BEACH, FL 33004
FBPE CERT. OF AUTHORIZATION No. 29578

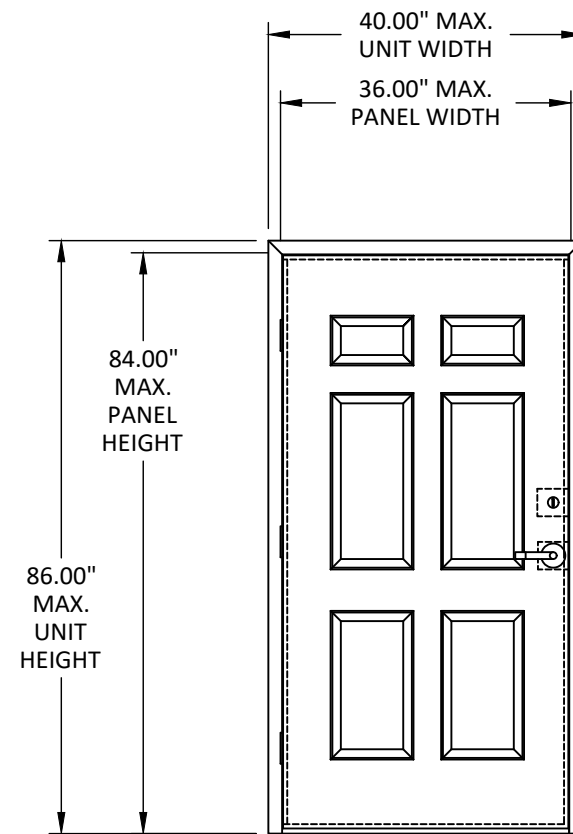
DATE:	03.17.17	
DWG. BY:	MSS	CHK. BY: HFN
SCALE:	NTS	
DWG. #:	RDF021	

SHEET:
2
OF 8

3/30/2022 5:33 PM
s:\projects\republic-doors\dl-22-0116 rdi submittal - dr551, dr999, dr1000, dr1001, dr1002\dwg\6. dl418 single flush inswing door (ld 7119)\rd021.dl418 single flush steel door.dwg

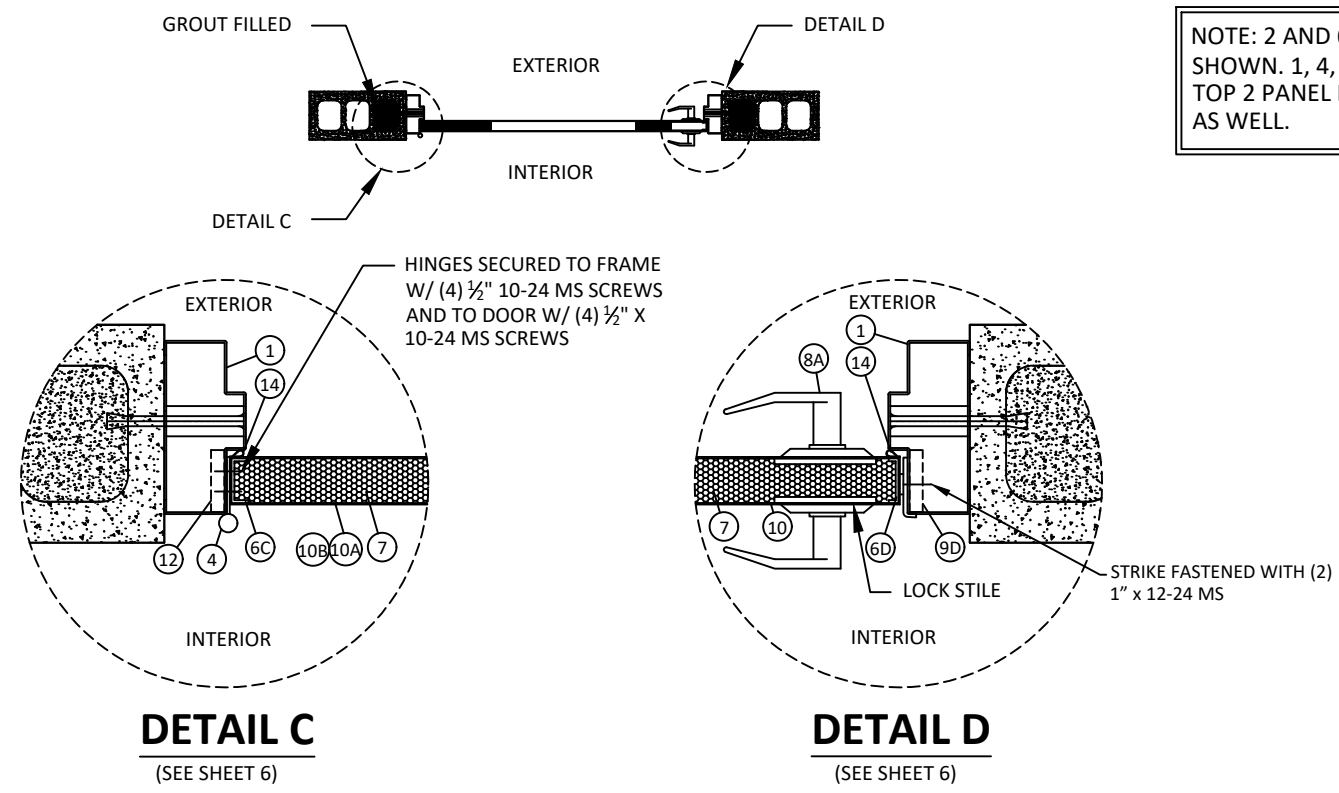


ELEVATION 2-PANEL
MORTISE LOCK
(INSWING DOOR - INTERIOR VIEW)



ELEVATION 6-PANEL
CYLINDRICAL LOCK W/ DEADLOCK
QUALIFIED PANEL CONFIGURATION

*FASTENERS SHOWN ARE TYPICAL/MINIMUM



NOTE: 2 AND 6 PANEL ELEVATIONS SHOWN. 1, 4, 8 PANEL AND/OR ARCH TOP 2 PANEL DESIGNS ARE QUALIFIED AS WELL.



155 REPUBLIC DRIVE
MCKENZIE, TN 38201
PH: (800) 799-3667 FX: (731) 352-2556

TITLE: DL 418 FLUSH INSWING STEEL DOOR
MORTISE LOCK ELEVATIONS & DETAILS

PREPARED BY: BUILDING DROPS, INC.
398 E. DANIA BEACH BLVD., STE. 338
DANIA BEACH, FL 33004
PH: (954) 399-8478
FAX: (954) 744-4738
WEB: www.buildingdrops.com

REMARKS	BY	DATE
2018 IBC UPDATE	CA	3.28.22

THE INSTALLATION DETAILS DESCRIBED HEREIN ARE GENERIC AND MAY NOT REFLECT ACTUAL CONDITIONS FOR A SPECIFIC SITE. IF SITE CONDITIONS CAUSE INSTALLATION TO DEVIATE FROM THE REQUIREMENTS DETAILED HEREIN, A LICENSED ENGINEER OR ARCHITECT SHALL PREPARE SITE SPECIFIC DOCUMENTS FOR USE WITH THIS DOCUMENT.

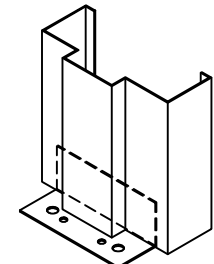
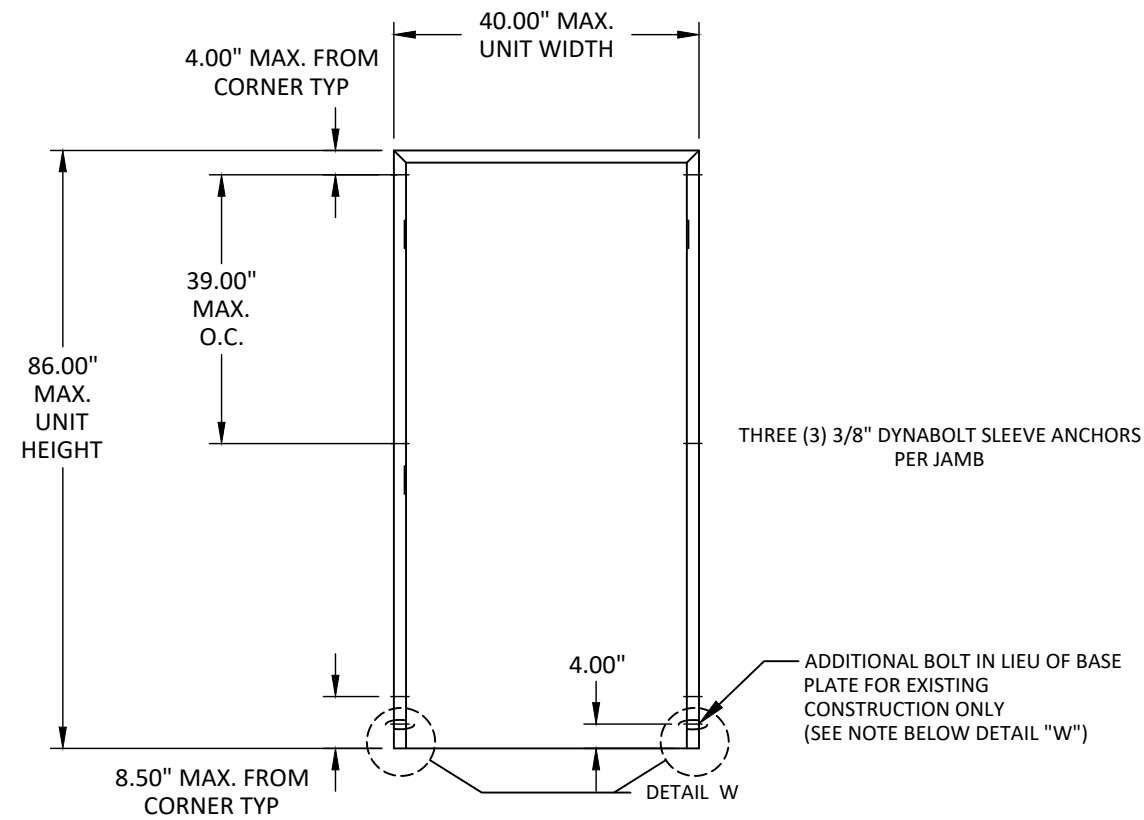


HERMES F. NORERO, P.E.
FLORIDA P.E. No 73778
BUILDING DROPS, INC
398 E. DANIA BEACH BLVD. # 338
DANIA BEACH, FL 33004
FBPE CERT. OF AUTHORIZATION No. 29578

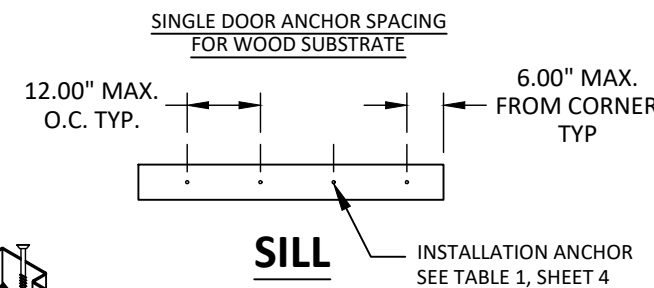
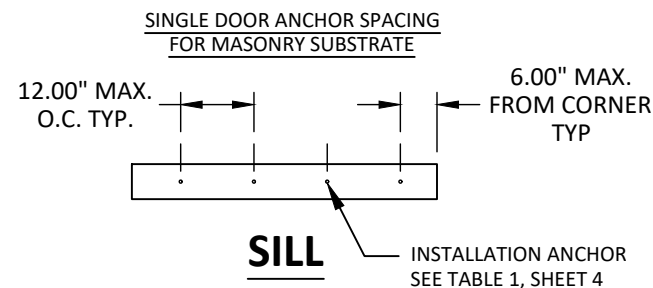
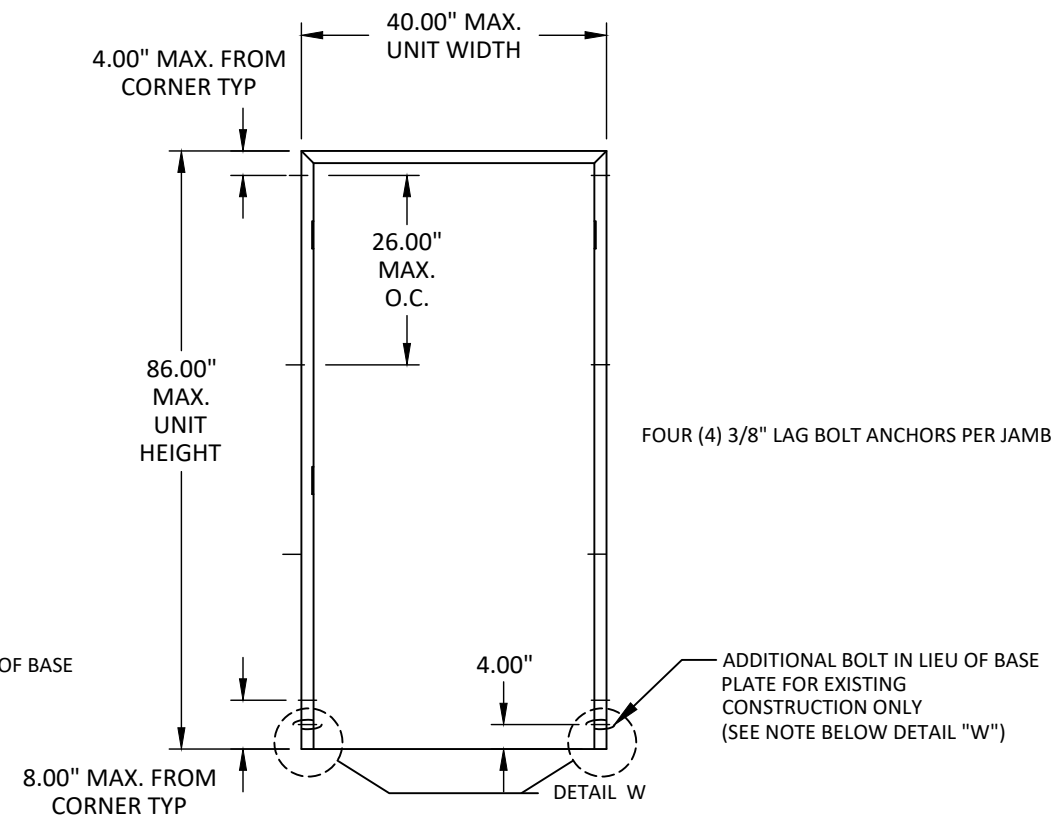
DATE: 03.17.17
DWG. BY: MSS
CHK. BY: HFN
SCALE: NTS
DWG. #: RDF021

SHEET: 3 OF 8

*FASTENERS SHOWN ARE TYPICAL/MINIMUM

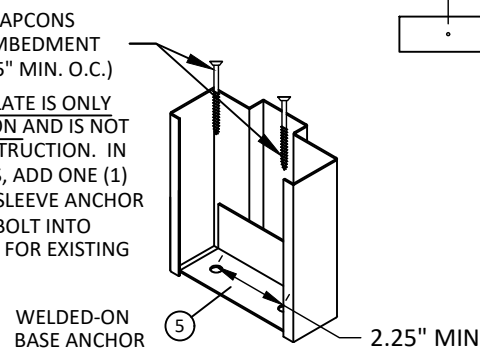


NOTE: REVERSE POSITION OF BASE SILL ANCHOR



TWO (2) 3/16\"/>

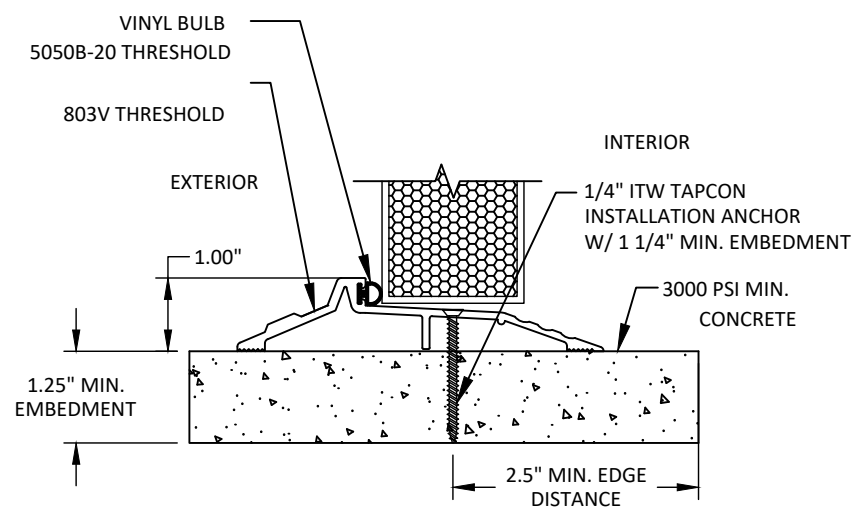
NOTE: JAMB CORNER BASE PLATE IS ONLY USED FOR NEW CONSTRUCTION AND IS NOT POSSIBLE FOR EXISTING CONSTRUCTION. IN LIEU OF BASE PLATE ANCHORS, ADD ONE (1) ADDITIONAL 3/8\"/>



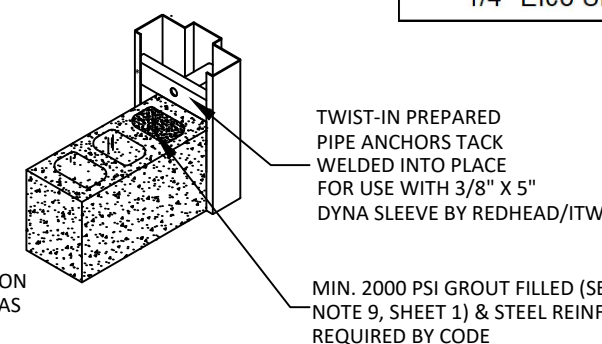
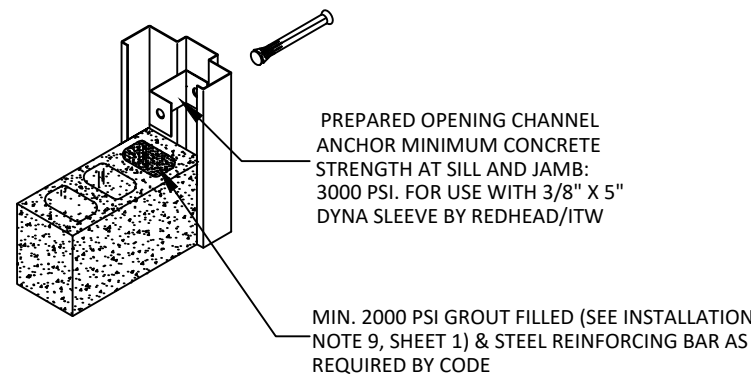
DETAIL W
JAMB CORNER BASE PLATE

TABLE 1: CONCRETE ANCHORS AT THRESHOLD

Anchor	Embedment (in)	Min. Edge Dist. (in)
1/4" ITW Tapcon	1.25	2.25
1/4" Powers Tappers+	1.75	2.5
1/4" Hilti Kwik Con II	1	2
1/4" Elco Ultracon	1	2



THRESHOLD DETAIL (SILL)



Republic
doors - frames

155 REPUBLIC DRIVE
MCKENZIE, TN 38201
PH: (800) 799-3667 FX: (731) 352-2556

TITLE: DL 418 FLUSH INSWING
STEEL DOOR
ANCHOR LAYOUT

PREPARED BY: BUILDING DROPS, INC.
398 E. DANIA BEACH BLVD., STE. 338
DANIA BEACH, FL 33004
PH: (954) 399-8478
FAX: (954) 474-4738
WEB: www.buildingdrops.com



REMARKS	BY	DATE
2018 IBC UPDATE	CA	3.28.22

THE INSTALLATION DETAILS DESCRIBED HEREIN ARE GENERIC AND MAY NOT REFLECT ACTUAL CONDITIONS FOR A SPECIFIC SITE. IF SITE CONDITIONS CAUSE INSTALLATION TO DEVIATE FROM THE REQUIREMENTS DETAILED HEREIN, A LICENSED ENGINEER OR ARCHITECT SHALL PREPARE SITE SPECIFIC DOCUMENTS FOR USE WITH THIS DOCUMENT.



HERMES F. NORERO, P.E.
FLORIDA P.E. No 73778
BUILDING DROPS, INC
398 E. DANIA BEACH BLVD. # 338
DANIA BEACH, FL 33004
FBPE CERT. OF AUTHORIZATION No. 29578

DATE: 03.17.17

DWG. BY: MSS
CHK. BY: HFN

SCALE: NTS

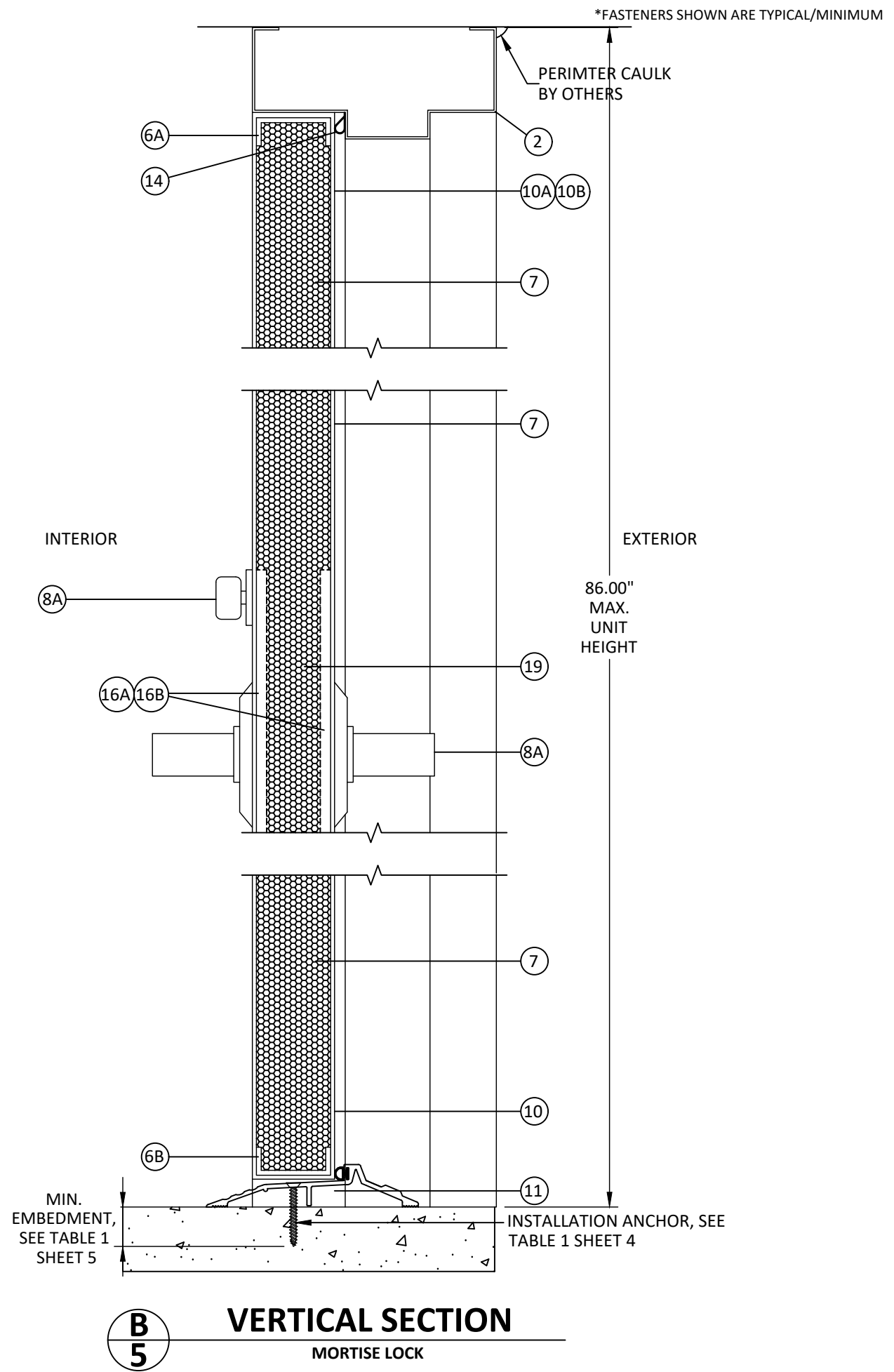
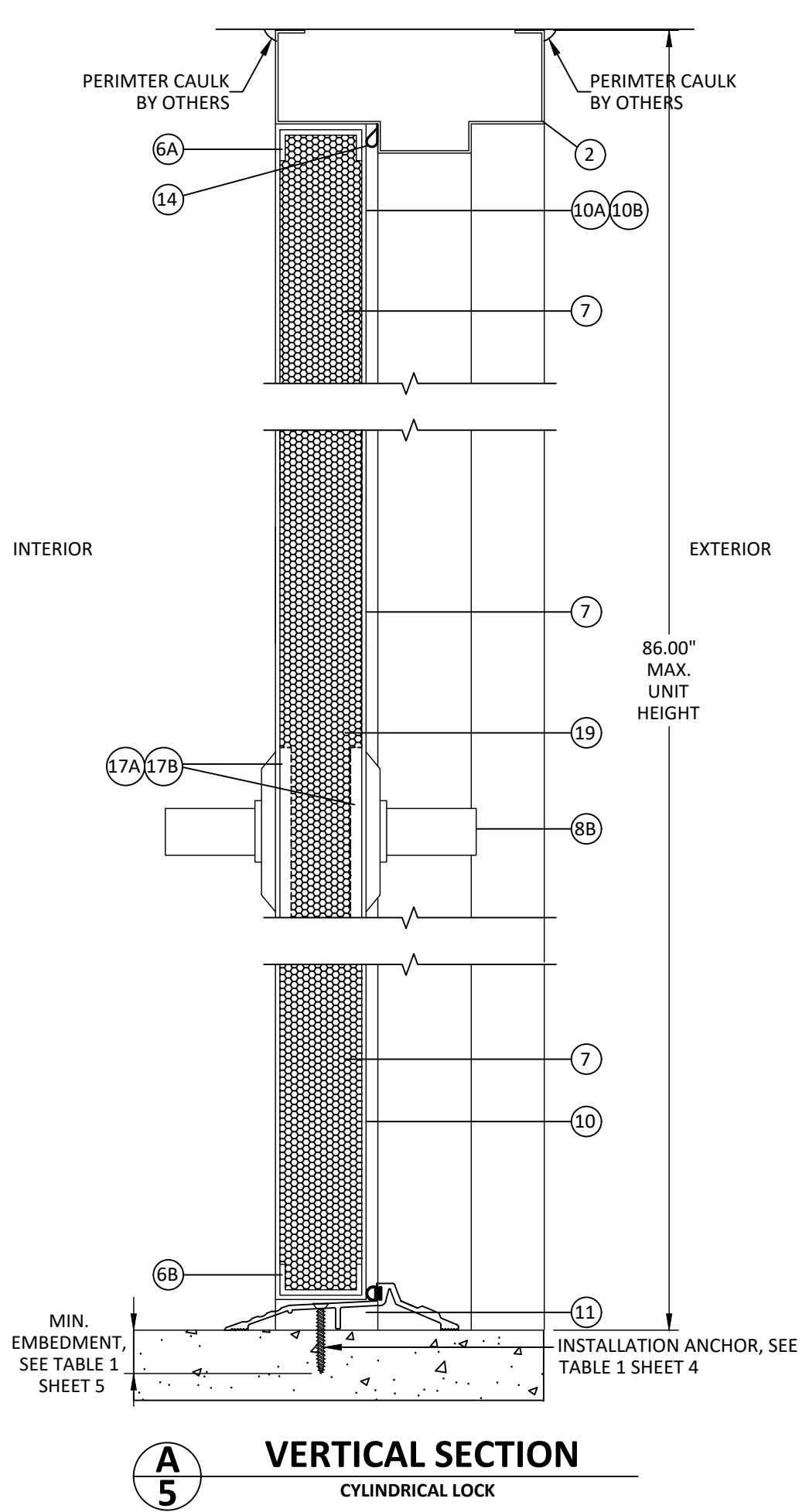
DWG. #: RDF021

SHEET:

4

OF 8

3/30/2022 5:33 PM
s:\projects\republicdoors\dl-22-0116 rdi submittal - dr551, dr999, dr1000, dr1001, dr1002\dwg\6. dl418 single flush inswing door (ld 7119)\rd021.dl418 single flush steel door.dwg



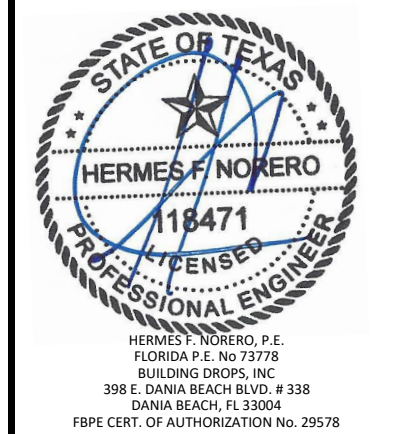
155 REPUBLIC DRIVE
MCKENZIE, TN 38201
PH: (800) 799-3667 FX: (731) 352-2556

TITLE: DL 418 FLUSH INSWING STEEL DOOR VERTICAL SECTIONS

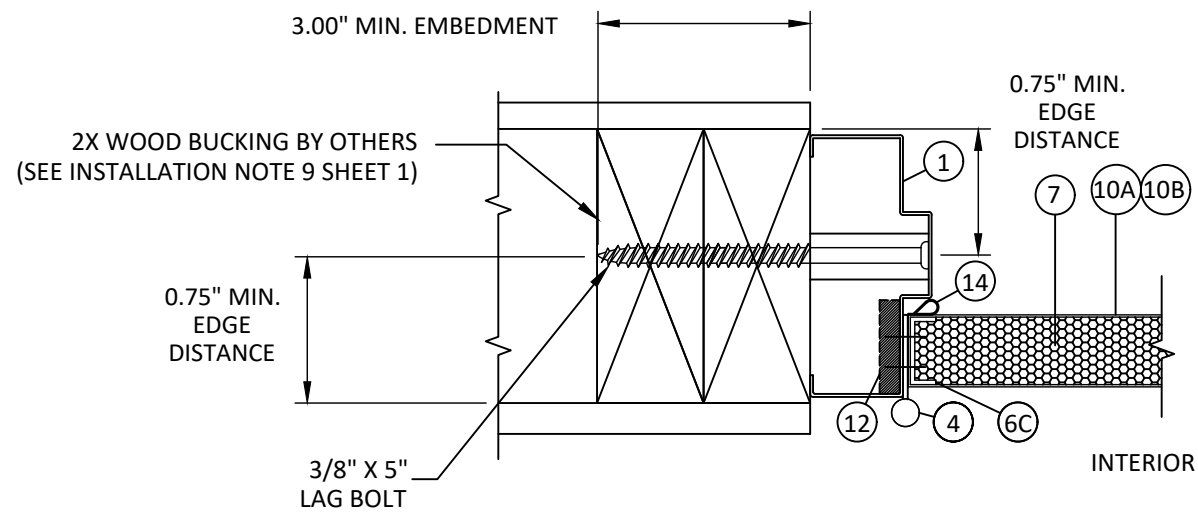
PREPARED BY: BUILDING DROPS, INC.
398 E. DANIA BEACH BLVD., STE. 338
DANIA BEACH, FL 33004
PH: (954) 399-8478
FAX: (954) 744-4738
WEB: www.buildingdrops.com

REMARKS	BY	DATE
2018 IBC UPDATE	CA	3.28.22

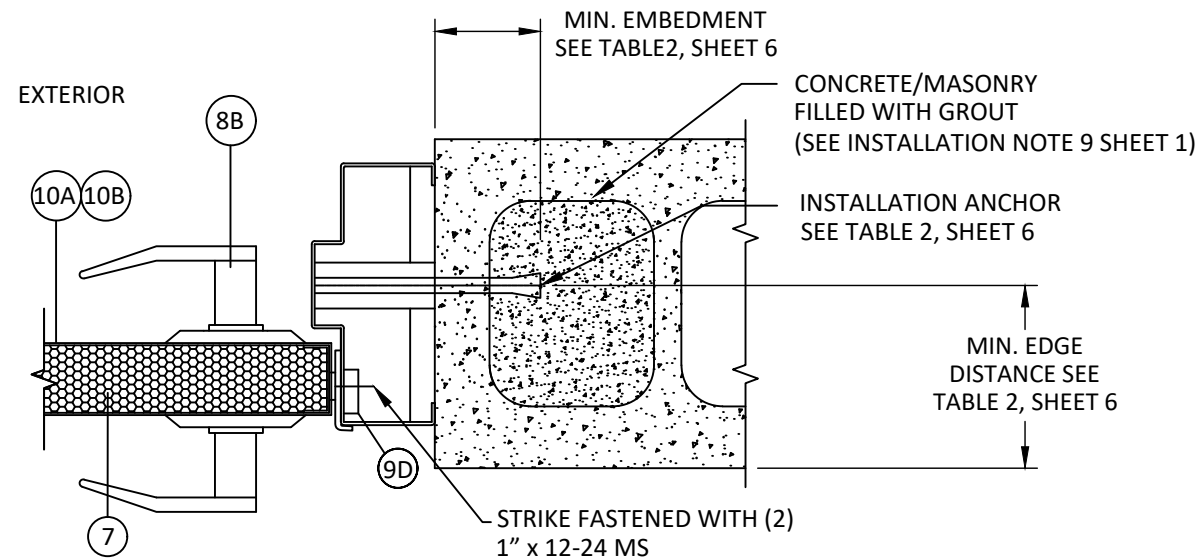
THE INSTALLATION DETAILS DESCRIBED HEREIN ARE GENERIC AND MAY NOT REFLECT ACTUAL CONDITIONS FOR A SPECIFIC SITE. IF SITE CONDITIONS CAUSE INSTALLATION TO DEVIATE FROM THE REQUIREMENTS DETAILED HEREIN, A LICENSED ENGINEER OR ARCHITECT SHALL PREPARE SITE SPECIFIC DOCUMENTS FOR USE WITH THIS DOCUMENT.



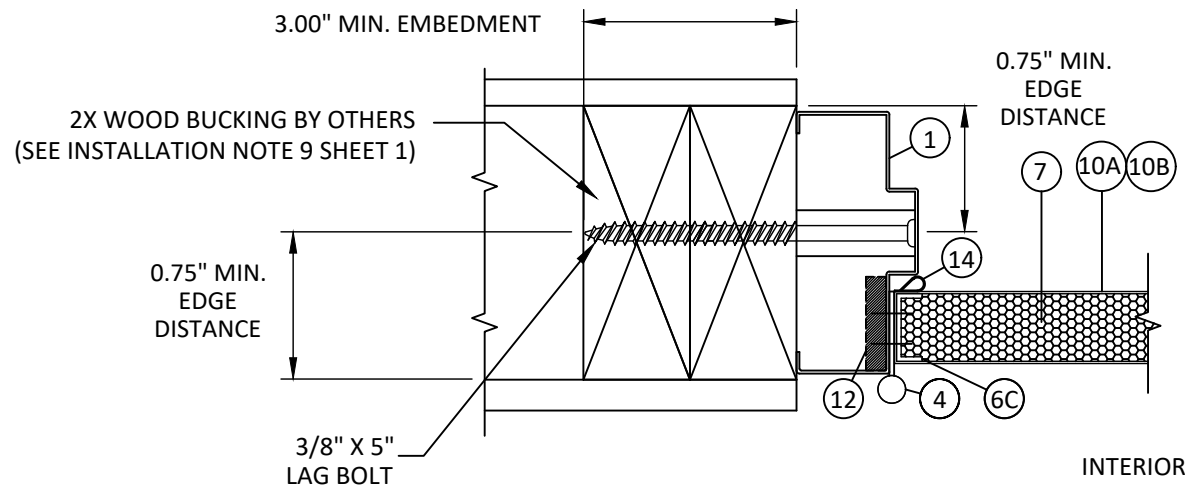
DATE:	03.17.17	
DWG. BY:	MSS	CHK. BY: HFN
SCALE:	NTS	
DWG. #:	RDF021	
SHEET:	5	
	OF 8	



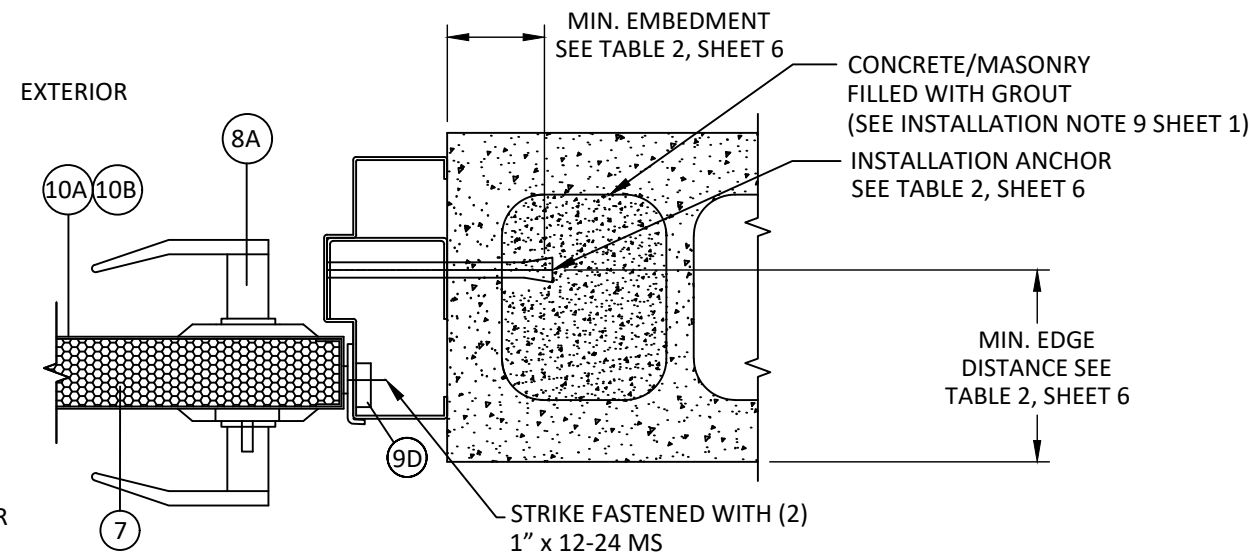
C
6 **HORIZONTAL SECTION**
JAMB - 2X WOOD FRAME
3/8" X 6" LAG BOLT



D
6 **HORIZONTAL SECTION**
CYLINDRICAL LOCK JAMB - 2X WOOD FRAME
EXPANSION BOLT WITH PIPE AND STRAP



E
6 **HORIZONTAL SECTION**
JAMB - 2X WOOD FRAME
3/8" X 6" LAG BOLT



F
6 **HORIZONTAL SECTION**
MORTISE LOCK JAMB - 2X WOOD FRAME
EXPANSION WITH PREPARED OPENING

TABLE 2: CONCRETE ANCHORS AT JAMBS

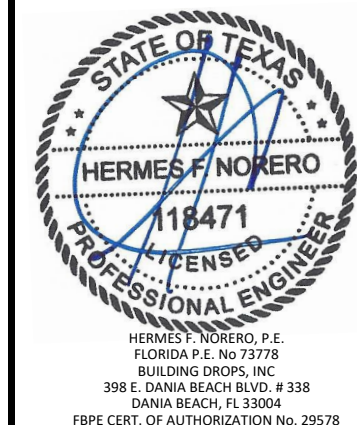
Anchor	Concrete Min. 3000 psi		CMU Min. 2000 Psi	
	Embedment (in)	Min. Edge Dist. (in)	Embedment (in)	Min. Edge Dist. (in)
3/8" ITW/Redhead Dynabolt	1.5	2.25	1.875	2.25
3/8" FH Powers Power-Bolt	2	2.5	1.875	2.5
3/8" FH Powers Lok Bolt AS	1.625	2.5	1.25	2.5
3/8" Hilti HLC-FPH Sleeve Anchor	1.25	2.25	1.25	2.5

TITLE: DL 418 FLUSH INSWING STEEL DOOR HORIZONTAL SECTIONS

PREPARED BY: BUILDING DROPS, INC.
398 E. DANIA BEACH BLVD., STE. 338
DANIA BEACH, FL 33004
PH: (954) 399-8478
FAX: (954) 474-4738
WEB: www.buildingdrops.com

REMARKS	BY	DATE
2018 IBC UPDATE	CA	3.28.22

THE INSTALLATION DETAILS DESCRIBED HEREIN ARE GENERIC AND MAY NOT REFLECT ACTUAL CONDITIONS FOR A SPECIFIC SITE. IF SITE CONDITIONS CAUSE INSTALLATION TO DEVIATE FROM THE REQUIREMENTS DETAILED HEREIN, A LICENSED ENGINEER OR ARCHITECT SHALL PREPARE SITE SPECIFIC DOCUMENTS FOR USE WITH THIS DOCUMENT.



DATE: 03.17.17

DWG. BY: MSS
CHK. BY: HFN

SCALE: NTS

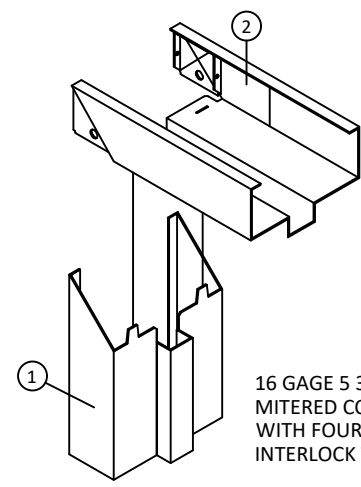
DWG. #: RDF021

SHEET:

6

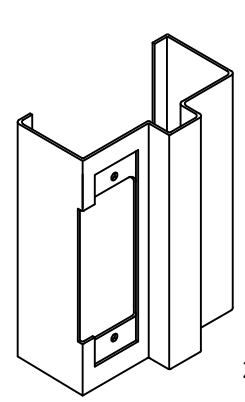
OF 8

3/30/2022 5:33 PM
s:\projects\republic-doors\tdf-22-0116 rdi submittal - dr551, dr999, dr1000, dr1001, dr1002\dwgs\6. dl418 single flush steel door.dwg

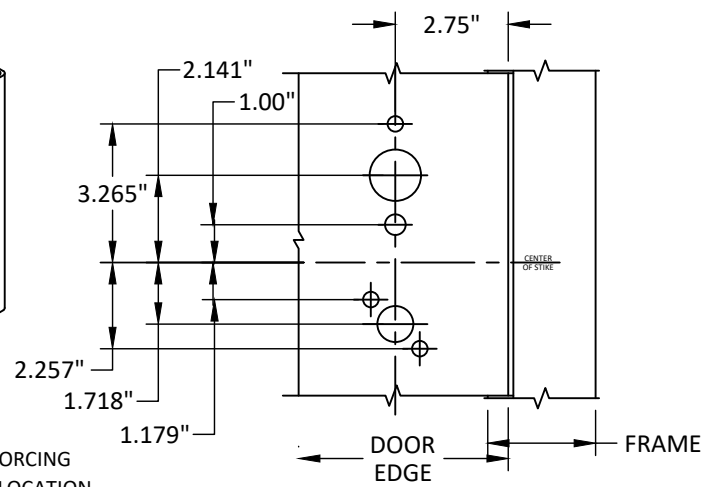


16 GAGE 5 3/4" DEPTH FRAME WITH MITERED CORNER CONSTRUCTION WITH FOUR INTEGRAL TABS WHICH INTERLOCK THE JAMBS TO THE HEAD

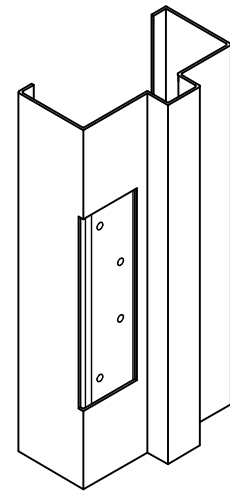
DETAIL Y



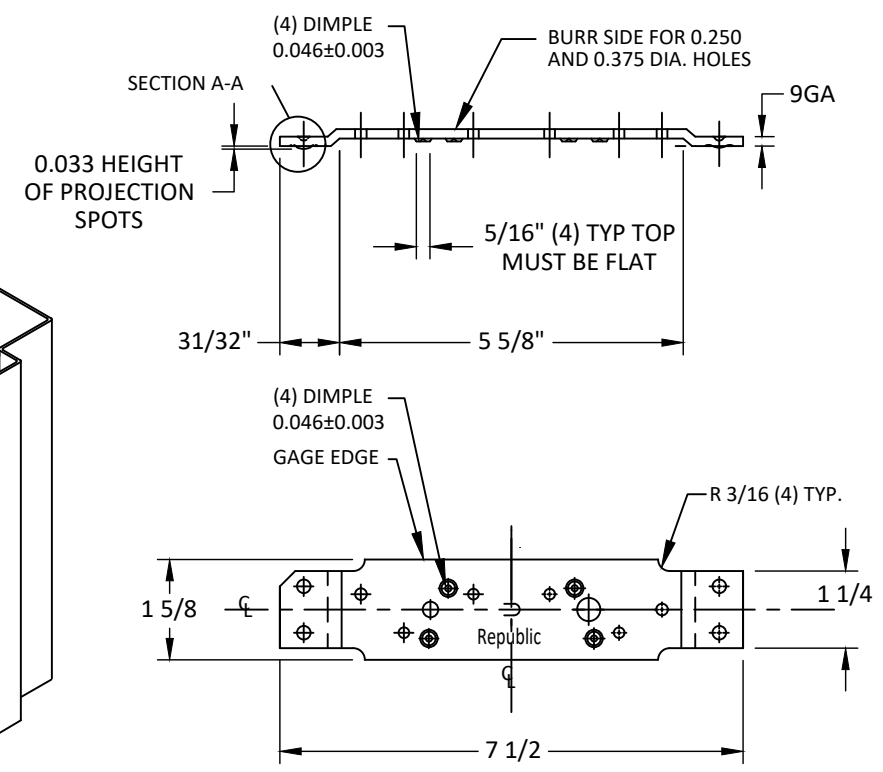
14 GAUGE STEEL REINFORCING PLATE AT LOCK STRIKE LOCATION



DETAIL X
LOCK REINFORCEMENT



DETAIL Z
HINGE REINFORCEMENT



*FASTENERS SHOWN ARE TYPICAL/MINIMUM



155 REPUBLIC DRIVE
MCKENZIE, TN 38201
PH: (800) 799-3667 FX: (731) 352-2556

TITLE: DL 418 FLUSH INSWING STEEL DOOR
CORNER ASSEMBLY & COMPONENTS

PREPARED BY: BUILDING DROPS, INC.
398 E. DANIA BEACH BLVD., STE. 338
DANIA BEACH, FL 33004
PH: (954) 399-8478
FAX: (954) 744-4738
WEB: www.buildingdrops.com

REMARKS	BY	DATE
2018 IBC UPDATE	CA	3.28.22

THE INSTALLATION DETAILS DESCRIBED HEREIN ARE GENERIC AND MAY NOT REFLECT ACTUAL CONDITIONS FOR A SPECIFIC SITE. IF SITE CONDITIONS CAUSE INSTALLATION TO DEVIATE FROM THE REQUIREMENTS DETAILED HEREIN, A LICENSED ENGINEER OR ARCHITECT SHALL PREPARE SITE SPECIFIC DOCUMENTS FOR USE WITH THIS DOCUMENT.



HERMES F. NORERO, P.E.
FLORIDA P.E. No 73778
BUILDING DROPS, INC
398 E. DANIA BEACH BLVD. # 338
DANIA BEACH, FL 33004
FBPE CERT. OF AUTHORIZATION No. 29578

DATE:	03.17.17
DWG. BY:	MSS
CHK. BY:	HFN
SCALE:	NTS
DWG. #:	RDF021

SHEET: 7 OF 8

*FASTENERS SHOWN ARE TYPICAL/MINIMUM

BILL OF MATERIALS			
ITEM	DESCRIPTION	MATERIAL	MANUFACTURER
1	70 5.75 SINGLE SWING JAMB PAIR	16 GA. (MIN. 0.053") COLD ROLLED STEEL	REPUBLIC DOOR & FRAMES
2	30 5.75 2" FACE SINGLE OPENING HEADER	16 GA. (MIN. 0.053") COLD ROLLED STEEL	REPUBLIC DOOR & FRAMES
3	HINGE REINFORCING FRAME	9 GA. (MIN. 0.132") COLD ROLLED/HOT ROLLED STEEL	REPUBLIC DOOR & FRAMES
4	PBB STANDARD WT. 4.5" HINGES	-	PBB
5	BASE ANCHOR	16 GA. (MIN. 0.053") COLD ROLLED STEEL	REPUBLIC DOOR & FRAMES
6A	TOP CHANNELS	16 GA. (MIN. 0.053") COLD ROLLED STEEL	REPUBLIC DOOR & FRAMES
6B	BOTTOM CHANNELS	16 GA. (MIN. 0.053") COLD ROLLED STEEL	REPUBLIC DOOR & FRAMES
6C	HINGE CHANNELS	16 GA. (MIN. 0.053") COLD ROLLED STEEL	REPUBLIC DOOR & FRAMES
6D	LOCK CHANNELS	16 GA. (MIN. 0.053") COLD ROLLED STEEL	REPUBLIC DOOR & FRAMES
7	CORE	1 PCF POLYSTYRENE	-
8A	DORMA MLK9000 OR SAFLOK MT DEVICE MORTISE LOCK	-	DORMA OR SAFLOK
8B	DORMA CL853D CYLINDRICAL LOCK	-	DORMA
8C	DORMA CL753D CYLINDRICAL LOCK	-	DORMA
8D	DORMA DB660D DEADLOCK	-	DORMA
9A	CLOSER REINFORCEMENT OPT.	14 GA. (MIN. 0.047") COLD ROLLED STEEL	REPUBLIC DOOR & FRAMES
9B	DEVICE REINFORCEMENT	14 GA. (MIN. 0.047") COLD ROLLED STEEL	REPUBLIC DOOR & FRAMES
9C	CH LOCK REINFORCEMENT	16 GA. (MIN. 0.053") COLD ROLLED STEEL	REPUBLIC DOOR & FRAMES
9D	FRAME STRIKE REINFORCEMENT PLATE ANSI/ASA 4.875	14 GA. (MIN. 0.047") COLD ROLLED STEEL	REPUBLIC DOOR & FRAMES
10A	FLUSH DOOR SKINS	18 GA. (MIN. 0.047") COLD ROLLED STEEL	REPUBLIC DOOR & FRAMES
10B	EMBOSSED DOOR SKINS	18 GA. (MIN. 0.047") COLD ROLLED STEEL	REPUBLIC DOOR & FRAMES
11	NATIONAL GUARD PRODUCTS 803V	ALUMINUM	NATIONAL GUARD PRODUCTS
12	DOOR HINGE REINFORCEMENTS	9 GA. (MIN. 0.132") COLD ROLLED STEEL	REPUBLIC DOOR & FRAMES
13	ANCHORS	-	-
14	-	-	-
15	ALL PURPOSE SILICONE CAULK	-	-
16A	MORTISE LOCK REINFORCEMENT	14 GA. (MIN. 0.047") COLD ROLLED STEEL	REPUBLIC DOOR & FRAMES
16B	MORTISE LOCK REINFORCEMENT	14 GA. (MIN. 0.047") COLD ROLLED STEEL	REPUBLIC DOOR & FRAMES
17A	CYLINDRICAL LOCK REINFORCEMENT	16 GA. (MIN. 0.053") COLD ROLLED STEEL	REPUBLIC DOOR & FRAMES
17B	CYLINDRICAL LOCK REINFORCEMENT	14 GA. (MIN. 0.047") COLD ROLLED STEEL	REPUBLIC DOOR & FRAMES



155 REPUBLIC DRIVE
MCKENZIE, TN 38201
PH: (800) 799-3667 FX: (731) 352-2556

TITLE: DL 418 FLUSH INSWING STEEL DOOR
BILL OF MATERIALS & COMPONENTS

PREPARED BY: BUILDING DROPS, INC.
398 E. DANIA BEACH BLVD., STE. 338
DANIA BEACH, FL 33004
PH: (954) 399-8478
FAX: (954) 44-4738
WEB: www.buildingdrops.com



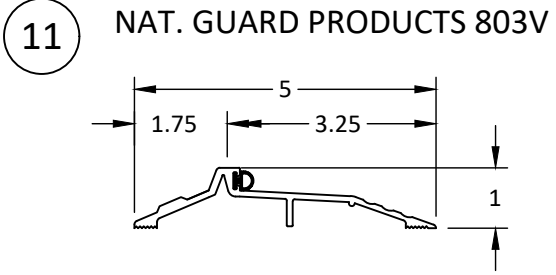
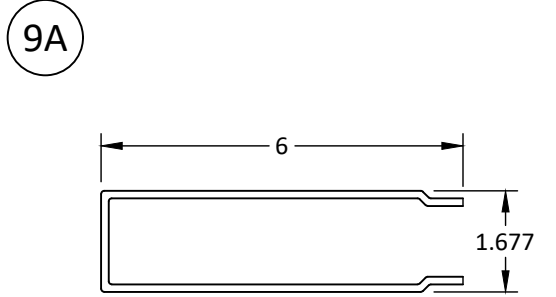
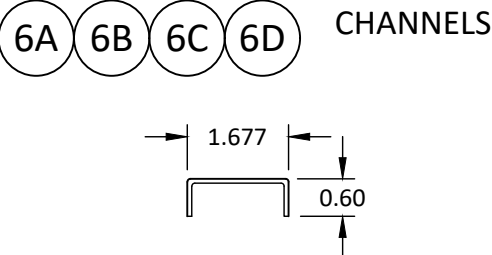
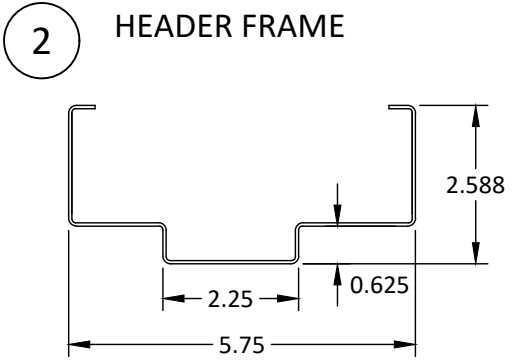
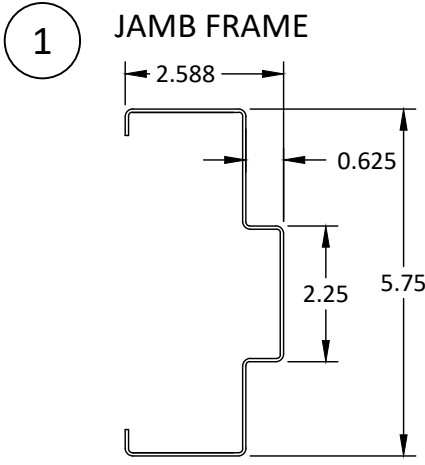
REMARKS	BY	DATE
2018 IBC UPDATE	CA	3.28.22

THE INSTALLATION DETAILS DESCRIBED HEREIN ARE GENERIC AND MAY NOT REFLECT ACTUAL CONDITIONS FOR A SPECIFIC SITE. IF SITE CONDITIONS CAUSE INSTALLATION TO DEVIATE FROM THE REQUIREMENTS DETAILED HEREIN, A LICENSED ENGINEER OR ARCHITECT SHALL PREPARE SITE SPECIFIC DOCUMENTS FOR USE WITH THIS DOCUMENT.



HERMES F. NORERO, P.E.
FLORIDA P.E. No 73778
BUILDING DROPS, INC
398 E. DANIA BEACH BLVD. # 338
DANIA BEACH, FL 33004
FBPE CERT. OF AUTHORIZATION No. 29578

DATE:	03.17.17
DWG. BY:	MSS
CHK. BY:	HFN
SCALE:	NTS
DWG. #:	RDF021
SHEET:	8



3/30/2022 5:33 PM
s:\projects\republic-doors\dl-22-0116 tdf submittal - dr551, dr999, dr1000, dr1001, dr1002\dwg\6. dl418 single flush inswing door (ld 7119).rdf021.dwg\6. dl418 single flush steel door.dwg