

REPUBLIC DOORS AND FRAMES

DL 418 OUTSWING GLAZED STEEL DOORS AND ME 416 FRAME WITH SIDELITES AND TRANSOM



155 REPUBLIC DRIVE
MCKENZIE, TN 38201
PH: (800) 799-3667 FX: (731) 352-2556

INSTALLATION NOTES:

- ONE (1) INSTALLATION ANCHOR IS REQUIRED AT EACH ANCHOR LOCATION SHOWN, UNLESS OTHERWISE STATED.
- THE NUMBER OF INSTALLATION ANCHORS DEPICTED IS THE MINIMUM NUMBER OF ANCHORS TO BE USED FOR PRODUCT INSTALLATION.
- INSTALL INDIVIDUAL INSTALLATION ANCHORS WITHIN A TOLERANCE OF $\pm 1/16$ INCH OF THE DEPICTED LOCATION IN THE ANCHOR LAYOUT DETAIL (I.E., WITHOUT CONSIDERATION OF TOLERANCES). TOLERANCES ARE NOT CUMULATIVE FROM ONE INSTALLATION ANCHOR TO THE NEXT.
- FOR INSTALLATION INFORMATION AND ANCHOR LAYOUTS REFER TO SHEETS 2, 3, & 4.
- MINIMUM EMBEDMENT AND EDGE DISTANCE EXCLUDE WALL FINISHES, INCLUDING BUT NOT LIMITED TO STUCCO, FOAM, BRICK VENEER, AND SIDING.
- INSTALLATION ANCHORS AND ASSOCIATED HARDWARE MUST BE MADE OF CORROSION RESISTANT MATERIAL OR HAVE A CORROSION RESISTANT COATING.
- FOR GROUT FILLED BLOCK, DO NOT INSTALL INSTALLATION ANCHORS INTO MORTAR JOINTS. EDGE DISTANCE IS MEASURED FROM FREE EDGE OF BLOCK OR EDGE OF MORTAR JOINT INTO FACE SHELL OF BLOCK.
- INSTALLATION ANCHORS SHALL BE INSTALLED IN ACCORDANCE WITH ANCHOR MANUFACTURER'S INSTALLATION INSTRUCTIONS, AND ANCHORS SHALL NOT BE USED IN SUBSTRATES WITH STRENGTHS LESS THAN THE MINIMUM STRENGTH SPECIFIED BY THE ANCHOR MANUFACTURER.
- STEEL COMPONENTS SHALL BE COATED OR PROVIDED WITH CORROSION RESISTANCE PROTECTION.
- INSTALLATION ANCHOR CAPACITIES FOR PRODUCTS HEREIN ARE BASED ON SUBSTRATE MATERIALS WITH THE FOLLOWING PROPERTIES:
 - WOOD - MINIMUM SPECIFIC GRAVITY OF 0.42.
 - CONCRETE - MINIMUM COMPRESSIVE STRENGTH OF 3000 PSI.
 - GROUT-FILLED CMU - UNIT STRENGTH CONFORMS TO ASTM C-90 & GROUT CONFORMS TO ASTM C 476. GROUT SHALL HAVE MINIMUM COMPRESSIVE STRENGTH OF 2000 PSI.

GENERAL NOTES:

- THE PRODUCT SHOWN HEREIN IS DESIGNED AND MANUFACTURED TO COMPLY WITH THE 2018 INTERNATIONAL BUILDING CODE (IBC) AND INTERNATIONAL RESIDENTIAL CODE (IRC) AND HAS BEEN EVALUATED ACCORDING TO THE FOLLOWING:
 - ASTM E330-14
 - ASTM E1886-13a
 - ASTM E1996-14a
- ADEQUACY OF THE EXISTING STRUCTURAL CONCRETE/MASONRY, 2X AND STEEL STUD FRAMING AS A MAIN WIND FORCE RESISTING SYSTEM CAPABLE OF WITHSTANDING AND TRANSFERRING APPLIED PRODUCT LOADS TO THE FOUNDATION IS THE RESPONSIBILITY OF THE ENGINEER OR ARCHITECT OF RECORD FOR THE PROJECT OF INSTALLATION.
- 2X BUCKS (WHEN USED) SHALL BE DESIGNED AND ANCHORED TO PROPERLY TRANSFER ALL LOADS TO THE STRUCTURE. BUCK DESIGN AND INSTALLATION IS THE RESPONSIBILITY OF THE ENGINEER OR ARCHITECT OF RECORD FOR THE PROJECT OF INSTALLATION.
- THE INSTALLATION DETAILS DESCRIBED HEREIN ARE GENERIC AND MAY NOT REFLECT ACTUAL CONDITIONS FOR A SPECIFIC IF SITE CONDITIONS CAUSE INSTALLATION TO DEVIATE FROM THE REQUIREMENTS DETAILED HEREIN, A LICENSED ENGINEER OR ARCHITECT SHALL PREPARE SITE SPECIFIC DOCUMENTS FOR USE WITH THIS DOCUMENT.
- APPROVED IMPACT PROTECTIVE SYSTEM **IS NOT REQUIRED** TO PROTECT SYSTEM IN AREAS REQUIRING IMPACT PROTECTION.
- FRAME MATERIAL: STEEL 16 GAUGE (0.053") MIN.
DOOR MATERIAL: STEEL 18 GAUGE (0.042") MIN.
- DESIGNATION "X" STANDS FOR THE FOLLOWING:
X: OPERABLE PANEL
- ALTERNATE LOCKING AND OPERATING HARDWARE MAY BE USED SUCH THEY ARE CURRENTLY APPROVED UNDER A SEPARATE APPROVAL. INSTALLATION SHALL MAINTAIN THE MINIMUM REQUIREMENTS & LIMITATIONS OF USE OF THE SEPARATE COMPONENT APPROVAL AND THE DETAILS HEREIN. THE LESSER DESIGN PRESSURE AND RATING OF THE COMPONENT APPROVAL AND APPROVAL HEREIN SHALL GOVERN.

STEEL DOOR CONSTRUCTION:

THE OVERALL PANEL THICKNESS IS 1 3/4 INCH THICK. THE DOOR HINGE AND LOCK VERTICAL CHANNELS ARE 1.677" X 0.620" X 93.500" INCH WIDE AND ARE CONSTRUCTED FROM **16 GAUGE** (0.053" THICK) COLD-ROLLED STEEL. THE DOOR TOP AND BOTTOM HORIZONTAL END CHANNELS ARE CONSTRUCTED FROM **16 GAUGE** (0.053" THICK) COLD-ROLLED STEEL. THE DOOR SKINS / FACE SHEETS ARE CONSTRUCTED OF **18 GAUGE** (0.042" MIN. THICKNESS) COLD-ROLLED STEEL AND ATTACHED TO THE END, HINGE AND LOCK CHANNELS. THE DOOR CORE IS CONSTRUCTED OF TYPE 99-0-3/4 KRAFT PAPER HONEYCOMB CORE AND ATTACHED TO THE FACES WITH GLUE. THE DOOR HINGE REINFORCEMENTS ARE 1.375" X 4.500" AND ARE CONSTRUCTED FROM **9 GAUGE** (0.132" THICK) COLD-ROLLED STEEL. THE CONTINUOUS HARDWARE REINFORCEMENTS ARE 1.677" X 6.00" FORMED AND ARE CONSTRUCTED FROM **14 GAUGE** (0.072" MIN. THICK) COLD-ROLLED STEEL. THE DOOR EXIT DEVICE REINFORCEMENTS ARE 1.677" X 5.313" X 14.000" AND ARE CONSTRUCTED FROM **14 GAUGE** (0.072" MIN. THICK) COLD-ROLLED STEEL. THE DOOR CLOSER REINFORCEMENTS ARE 1.677" X 6" X 18" AND ARE CONSTRUCTED FROM **14 GAUGE** (0.072" MIN. THICK) COLD-ROLLED STEEL. THE INACTIVE LEAF ASTRAGAL IS 1.700" X 95.125" AND IS MADE UP OF **14 GAUGE** (0.072" MIN THICKNESS) COLD ROLLED STEEL. THE CYLINDRICAL LOCK REINFORCEMENT IS 3.000" X 2.500" **16 GAUGE** (0.053" MIN. THICK) FORMED STEEL. THE DEAD LOCK REINFORCEMENT IS 3.000" X 3.000" **16 GAUGE** (0.053" MIN. THICK) FORMED STEEL. THE DOORS WERE ASSEMBLED WITH VARIOUS HARDWARE OPTIONS AS SHOWN ON SHEETS 2, 3, & 4 WITH APPLICABLE REINFORCEMENT DESCRIBED ABOVE.

FRAME CONSTRUCTION:

THE FRAMES & MULLIONS ARE CONSTRUCTED FROM **16 GAUGE** (0.053" MIN. THICK) COLD-ROLLED STEEL AND HAVE A DEPTH OF 5.75". THE CORNERS ARE MITERED KNOCK DOWN AND WELDED. THE FRAME CORNER REINFORCEMENTS ARE KNOCK DOWN WITH SLOT AND TAB TYPE CONSTRUCTION. THE DOOR FRAME HINGE REINFORCEMENTS ARE 7.50" X 1.625" AND ARE CONSTRUCTED OF **9 GAUGE** (0.132" MIN.) COLD-ROLLED STEEL. THE BASE ANCHORS ARE 1.875" X 1.875" AND ARE CONSTRUCTED OF **16 GAUGE** (0.053" THICK MIN.) FORMED STEEL. THE MULLION REINFORCEMENTS ARE 5.750" X 0.750" X 120" C-CHANNELS CONSTRUCTED OF **16 GAUGE** (0.053" THICK MIN.) COLD ROLLED STEEL AND ARE FOR USE IN ALL MULLIONS GREATER THAN 4' IN LENGTH.

TABLE OF CONTENTS	
SHEET	SHEET DESCRIPTION
1	INSTALLATION & GENERAL NOTES
2	ML ELEVATION, ANCHOR LAYOUT, BOM & DETAILS
3	CYL. W/ DB ELEVATION, ANCHOR LAYOUT, BOM & DETAILS
4	SVR ELEVATION, ANCHOR LAYOUT, BOM & DETAILS
5	VERTICAL SECTIONS
6	HORIZONTAL SECTIONS
7	INSTALLATION & REINFORCEMENT DETAILS
8	CORNER, MULLION, DOOR CORE, & GLAZING DETAILS
9	COMPONENTS
10	QUALIFIED CONFIGURATIONS & BOM

DESIGN PRESSURE RATING FOR GLAZED DOOR ASSEMBLY		
DESIGN PRESSURE ALL SIZES		MISSILE IMPACT RATING
+50/-50 PSF	*WITHOUT WATER INFILTRATION	SMALL & LARGE MISSILE IMPACT RATED

*UNIT SHALL BE INSTALLED AT LOCATION PROTECTED BY OVERHANG SUCH THE OVERHANG RATIO (OH) = OH LENGTH/OH HEIGHT GREATER THAN 1.0 WHERE WATER INFILTRATION IS REQUIRED.

TITLE: DL 418 GLAZED DOORS & ME416 FRAMES
INSTALLATION & GENERAL NOTES

PREPARED BY: BUILDING DROPS, INC.
398 E. DANIA BEACH BLVD., STE. 338
DANIA BEACH, FL 33004
PH: (954) 399-8478
FAX: (954) 744-4738
WEB: www.buildingdrops.com

REMARKS	BY	DATE
2018 IBC UPDATE	CA	3.28.22

THE INSTALLATION DETAILS DESCRIBED HEREIN ARE GENERIC AND MAY NOT REFLECT ACTUAL CONDITIONS FOR A SPECIFIC SITE. IF SITE CONDITIONS CAUSE INSTALLATION TO DEVIATE FROM THE REQUIREMENTS DETAILED HEREIN, A LICENSED ENGINEER OR ARCHITECT SHALL PREPARE SITE SPECIFIC DOCUMENTS FOR USE WITH THIS DOCUMENT.



HERMES F. NORERO, P.E.
FLORIDA P.E. No. 73778
BUILDING DROPS, INC
398 E. DANIA BEACH BLVD. # 338
DANIA BEACH, FL 33004
FBPE CERT. OF AUTHORIZATION No. 29578

DATE: 03.17.17

DWG. BY: MSS CHK. BY: HFN

SCALE: NTS

DWG. #: RDF020

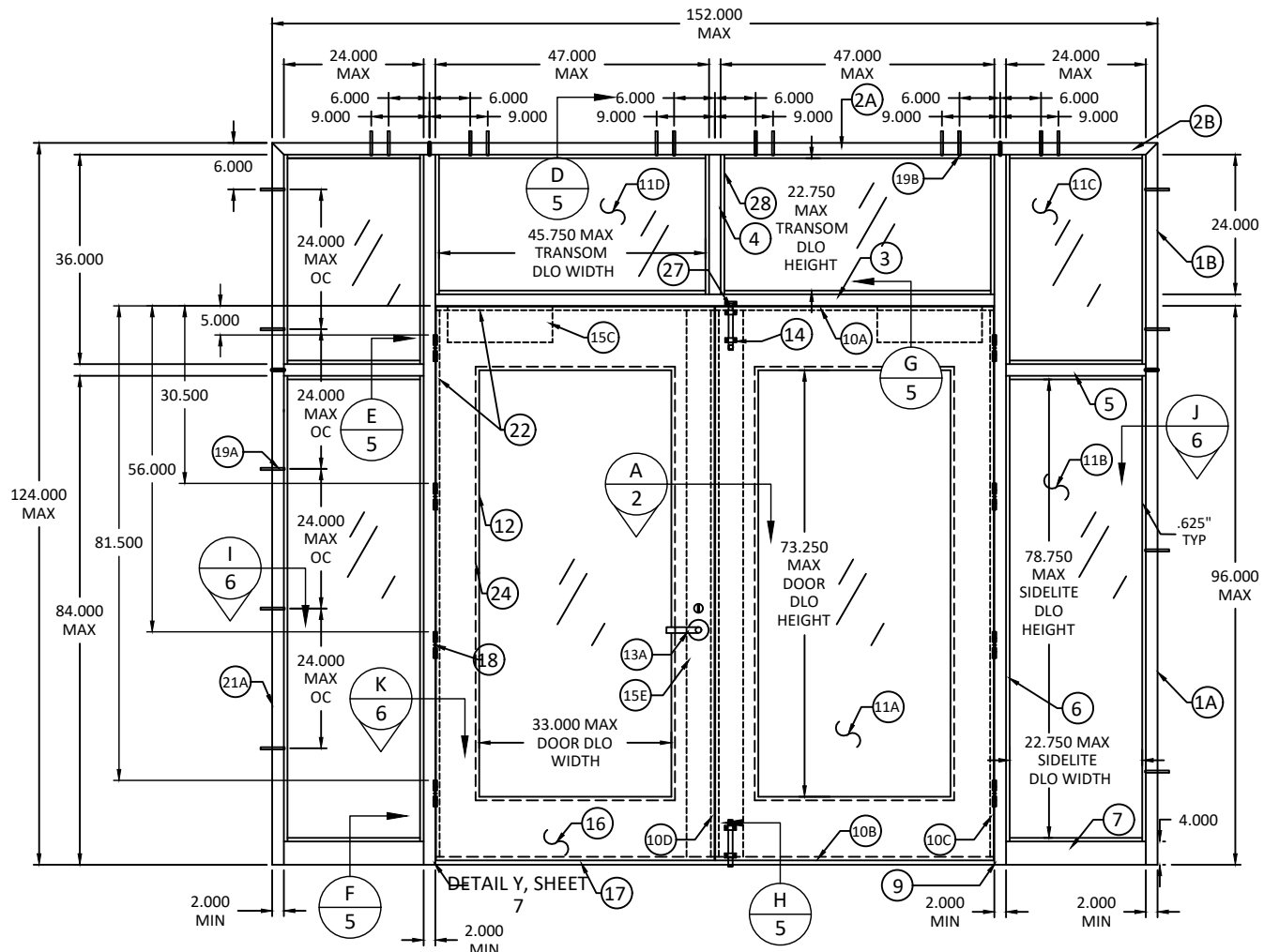
SHEET: 1 OF 10

*FASTENERS SHOWN ARE TYPICAL/MINIMUM



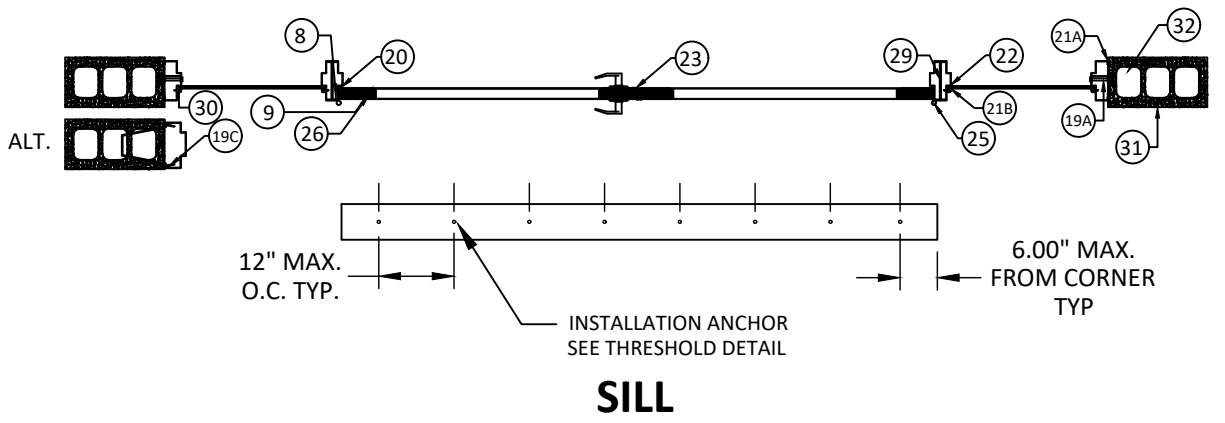
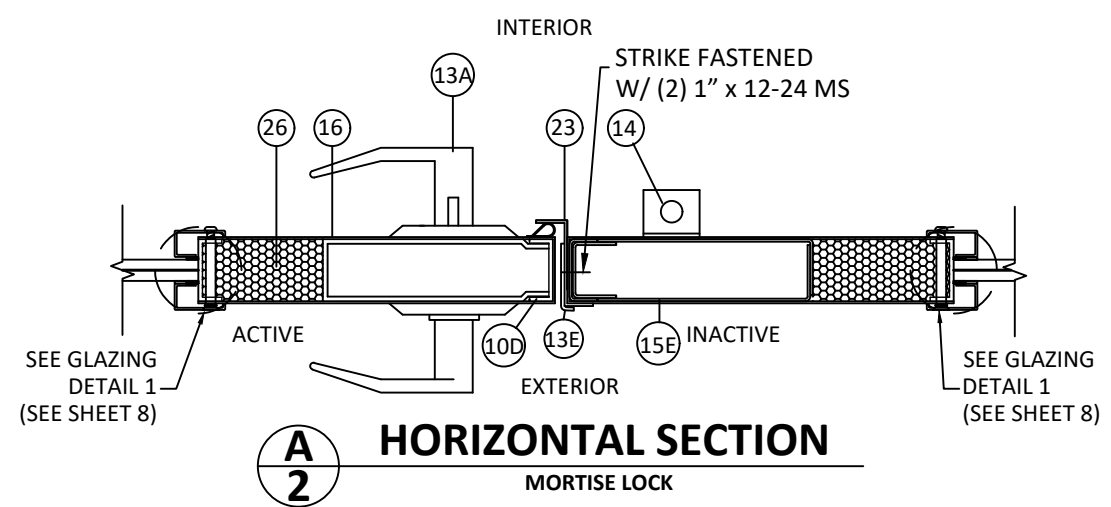
155 REPUBLIC DRIVE
MCKENZIE, TN 38201
PH: (800) 799-3667 FX: (731) 352-2556

TITLE: DL 418 GLAZED DOORS & ME416 FRAMES
ML ELEVATION, ANCHOR LAYOUT, BOM & DETAILS
PREPARED BY: BUILDING DROPS, INC.
398 E. DANIA BEACH BLVD., STE. 338
DANIA BEACH, FL 33004
PH: (954) 399-8478
FAX: (954) 744-4738
WEB: www.buildingdrops.com



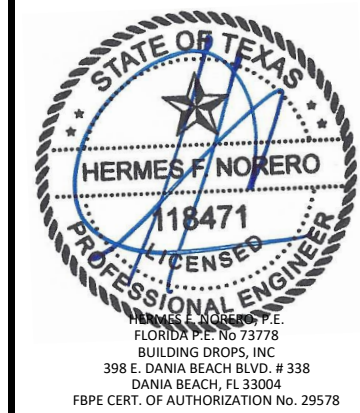
ELEVATION A
PAIR DOOR W/ SIDELITES & TRANSOM.
MORTISE LOCK

Item	Qty	Description	Material	Dimensions (in.)
1A	1 PR	70 5.750 DOUBLE SWING JAMB PAIR	16 GA COLD ROLLED STEEL	.053 min. X 5.750 X 86.000 (formed)
1B	1 PR	30 5.750 DOUBLE SWING JAMB PAIR	16 GA COLD ROLLED STEEL	.053 min. X 5.750 X 36.000 (formed)
2A	1	98" 5.750 2" FACE DOUBLE OPENING HEADER	16 GA COLD ROLLED STEEL	.053 min. X 5.750 X 98.000 (formed)
2B	2	27" 5.750 2" FACE DOUBLE OPENING HEADER	16 GA COLD ROLLED STEEL	.053 min. X 5.750 X 27.000 (formed)
3	1	MULLION 96" X 2" FACE	16 GA COLD ROLLED STEEL	.053 min. X 5.750 X 96.000 (formed)
4	1	MULLION 24" X 2" FACE	16 GA COLD ROLLED STEEL	.053 min. X 5.750 X 24.000 (formed)
5	2	MULLION 24" X 2" FACE	16 GA COLD ROLLED STEEL	.053 min. X 5.750 X 24.000 (formed)
6	2	MULLION 122" X 2" FACE	16 GA COLD ROLLED STEEL	.053 min. X 5.750 X 122.000 (formed)
7	2	4" SILL	16 GA COLD ROLLED STEEL	.053 min. X 5.750 X 24.000 (formed)
8	2	HINGE REINFORCING FRAME	9 GA COLD ROLLED/HOT ROLLED STEEL	.132 min. x 7.50 x 1.625
9	2	BASE ANCHOR	16 GA COLD ROLLED STEEL	.053 min. X 1.875 X 1.875 (formed)
10A	2	TOP CHANNELS	16 GA COLD ROLLED STEEL	.053 min. x 1.677 x .620 x 47.563 formed
10B	2	BOTTOM CHANNELS	16 GA COLD ROLLED STEEL	.053 min. x 1.677 x .620 x 47.563 formed
10C	2	HINGE CHANNELS	16 GA COLD ROLLED STEEL	.053 min. x 1.677 x .620 x 93.500 formed
10D	2	LOCK CHANNELS	16 GA COLD ROLLED STEEL	.053 min. x 1.677 x .620 x 93.500 formed
11A	2	LAMINATED GLASS (34.750 X 75.000 X .312) Old Castle	LAMINATED GLASS	34.750 X 74.750 X .312
11B	2	LAMINATED GLASS (24.000 X 80.000 X .312) Old Castle	LAMINATED GLASS	23.750 X 79.750 X .312
11C	2	LAMINATED GLASS (24.000 X 36.000 X .312) Old Castle	LAMINATED GLASS	23.750 X 35.750 X .312
11D	2	LAMINATED GLASS (24.000 X 47.000)	LAMINATED GLASS	23.750 X 46.750 X .312
12	2	AIR LOUVERS (VLF-IGHRC)	GLASS KIT	34.000 X 75.000
13A	1	DORMA ML9953D MORTISE LOCK	MORTISE LOCK	
13E	1	4 7/8" ASA STRIKE	STEEL	
13F	1	DORMA 426 STRIKE PLATE	STEEL	
14	1	ROCKWOOD 585 SURFACE BOLTS		
14A	1	DORMA 340 STRIKE PLATE	STEEL	
15C	2	CLOSER REINFORCEMENT	14 GA COLD ROLLED STEEL	.072 min. X 1.677 X 6.000 X 18.000 (formed)
15E	2	FULL HEIGHT LOCK CHANNEL REINFORCEMENT	14 GA COLD ROLLED STEEL	.072 MIN. X 1.677 X 6.000 X 93.500 (formed)
16	4	DOOR SKINS (PROJ. WELDED ON 2 1/2 CENTERS TO CHAN'Ls)	18 GA COLD ROLLED STEEL	.042 min. X 49.515 x 95.125 (flat)
17	1	NATIONAL GUARD NG 803V	THRESHOLD	
18	8	DOOR HINGE REINFORCEMENTS	9 GA COLD ROLLED STEEL	.132 min. x 1.375 x 4.500
19A	8	3/8" FLAT HEAD EXPANSION SHELL ANCHOR BOLT	3/8" X 5 (2 1/2" MIN EMBEDMENT)	3/8 X 5.000
19B	6	3/8" FLAT HEAD WOOD SCREWS	3/8" X 5 (3" MIN EMBEDMENT)	3/8 X 5.000
19C	AS NEEDED	WIRE MASONRY ANCHOR	3/8 X 8 3/4	3/8 X 8 3/4
20	AS NEEDED	NATIONAL GUARD PRODUCTS 5050B-20	VINYL BULB	
21A	AS NEEDED	ALL PURPOSE SILICONE CAULK		
21B	AS NEEDED	DOW 995 SILICONE CAULK		
22	AS NEEDED	GLAZING TAPE		
23	1	INACTIVE LEAF ASTRAGAL	14 GA COLD ROLLED STEEL	.072 min. X 1.70 X 95.125
24	AS NEEDED	CUT OUT REINFORCEMENT	16 GA COLD ROLLED STEEL	.053 min. x 1.677 x .620
25	8	STANDARD WT. 4 1/2" STEEL BALL BEARING HINGES		4 1/2" X 4 1/2"
26	2	HONEYCOMB CORE (STEEL STIFFENED, POLYSTYRENE OPT.)		
27	1	SURFACE BOLT ANGLE REINFORCEMENT	3 GA STEEL ANGLE REINFORCEMENT	250 X 1.5 X 1.5
28	AS NEEDED	GLAZING BEAD		.042 X .750 X .625
29	4	1" CHANNEL	16 GA COLD ROLLED STEEL	5.75 X .750 X 120
30	AS NEEDED	#8 OVAL HEAD TEK SCREW (12" OC/6" FROM STOP)		#8 X 1.500
31	AS NEEDED	8" CMU BLOCK FILLED WITH 2000 PSI MORTAR		
32	AS NEEDED	POURED CONCRETE 2000 PSI (MIN)		
33	1	WOOD BUCK		



REMARKS	BY	DATE
2018 IBC UPDATE	CA	3.28.22

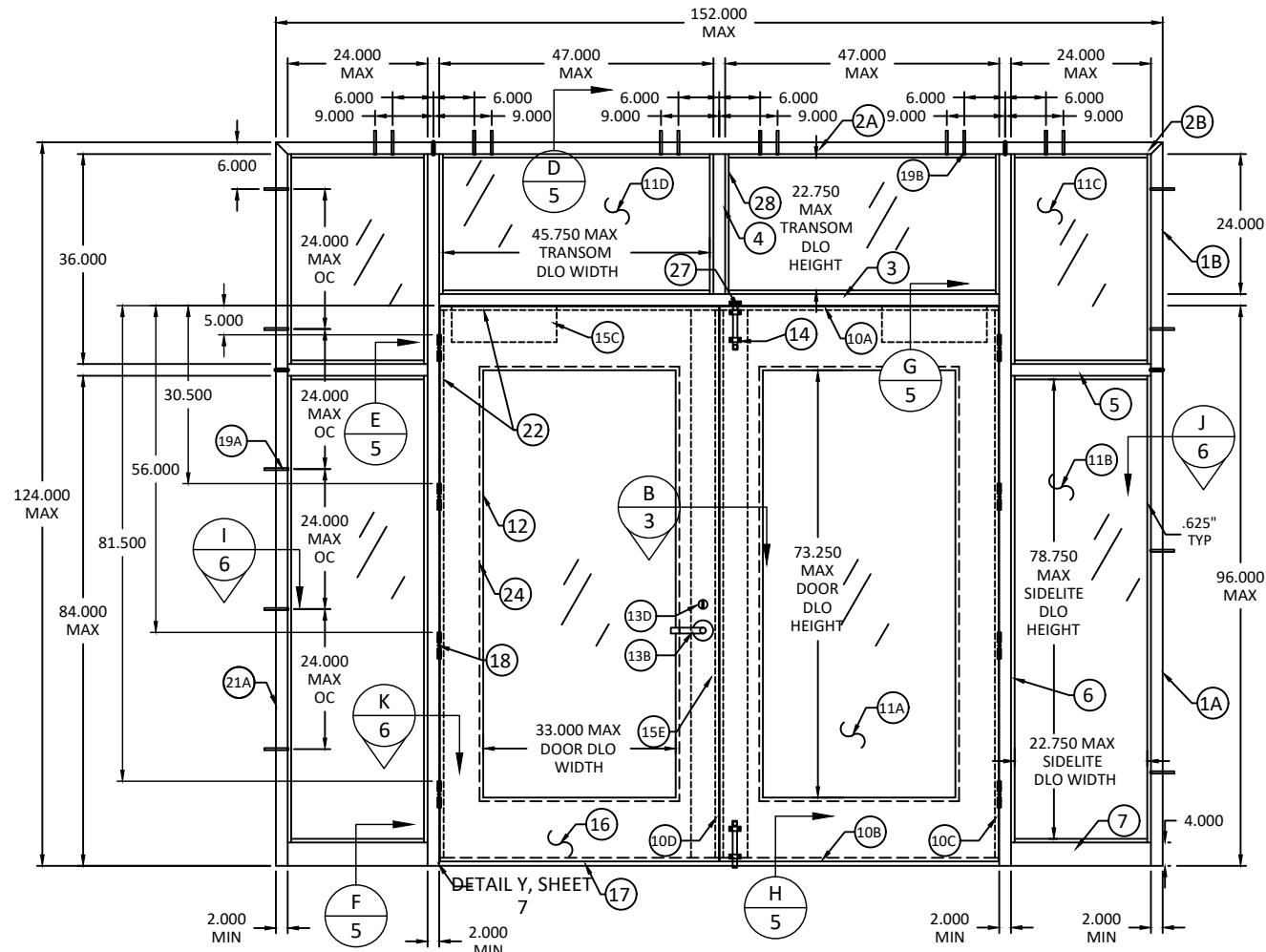
THE INSTALLATION DETAILS DESCRIBED HEREIN ARE GENERIC AND MAY NOT REFLECT ACTUAL CONDITIONS FOR A SPECIFIC SITE. IF SITE CONDITIONS CAUSE INSTALLATION TO DEVIATE FROM THE REQUIREMENTS DETAILED HEREIN, A LICENSED ENGINEER OR ARCHITECT SHALL PREPARE SITE SPECIFIC DOCUMENTS FOR USE WITH THIS DOCUMENT.



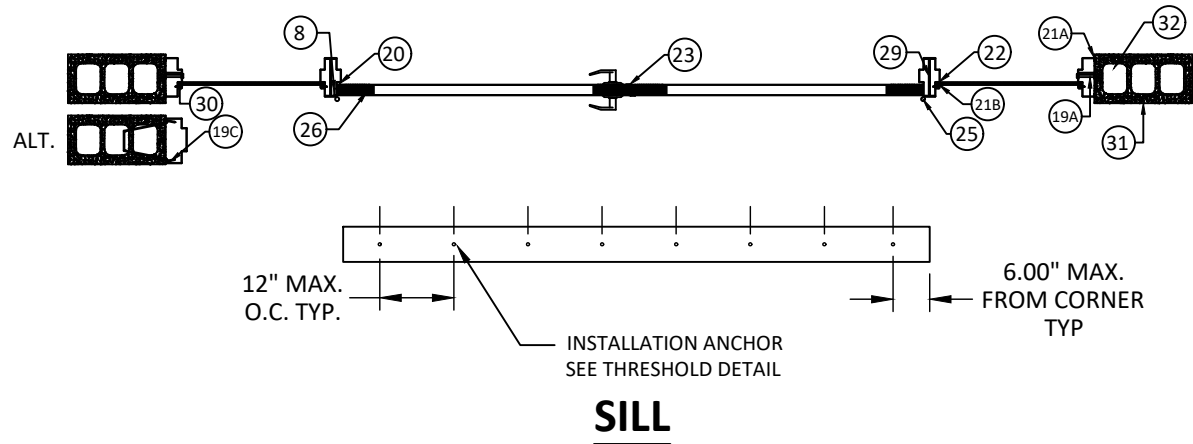
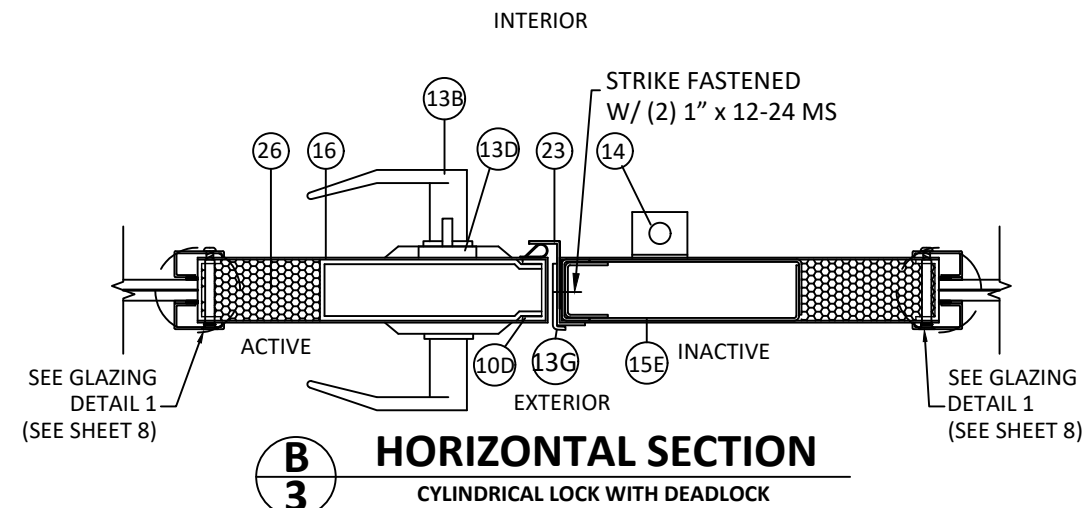
HERMES F. NORERO, P.E.
FLORIDA P.E. No. 73778
BUILDING DROPS, INC
398 E. DANIA BEACH BLVD. # 338
DANIA BEACH, FL 33004
FBPE CERT. OF AUTHORIZATION No. 29578

DATE:	03.17.17
DWG. BY:	MSS
CHK. BY:	HFN
SCALE:	NTS
DWG. #:	RDF020
SHEET:	2

*FASTENERS SHOWN ARE TYPICAL/MINIMUM



Item	Qty	Description	Material	Dimensions (in.)
1A	1 PR	70 5.750 DOUBLE SWING JAMB PAIR	16 GA COLD ROLLED STEEL	.053 min. X 5.750 X 86.000 (formed)
1B	1 PR	30 5.750 DOUBLE SWING JAMB PAIR	16 GA COLD ROLLED STEEL	.053 min. X 5.750 X 36.000 (formed)
2A	1	98" 5.750 2" FACE DOUBLE OPENING HEADER	16 GA COLD ROLLED STEEL	.053 min. X 5.750 X 98.000 (formed)
2B	2	27" 5.750 2" FACE DOUBLE OPENING HEADER	16 GA COLD ROLLED STEEL	.053 min. X 5.750 X 27.000 (formed)
3	1	MULLION 96" X 2" FACE	16 GA COLD ROLLED STEEL	.053 min. X 5.750 X 96.000 (formed)
4	1	MULLION 24" X 2" FACE	16 GA COLD ROLLED STEEL	.053 min. X 5.750 X 24.000 (formed)
5	2	MULLION 24" X 2" FACE	16 GA COLD ROLLED STEEL	.053 min. X 5.750 X 24.000 (formed)
6	2	MULLION 122" X 2" FACE	16 GA COLD ROLLED STEEL	.053 min. X 5.750 X 122.000 (formed)
7	2	4" SILL	16 GA COLD ROLLED STEEL	.053 min. X 5.750 X 24.000 (formed)
8	2	HINGE REINFORCING FRAME	9 GA COLD ROLLED/HOT ROLLED STEEL	1.32 min. x 7.50 x 1.625
9	2	BASE ANCHOR	16 GA COLD ROLLED STEEL	.053 min. x 1.875 x 1.875 (formed)
10A	2	TOP CHANNELS	16 GA COLD ROLLED STEEL	.053 min. x 1.677 x .620 x 47.563 formed
10B	2	BOTTOM CHANNELS	16 GA COLD ROLLED STEEL	.053 min. x 1.677 x .620 x 47.563 formed
10C	2	HINGE CHANNELS	16 GA COLD ROLLED STEEL	.053 min. x 1.677 x .620 x 93.500 formed
10D	2	LOCK CHANNELS	16 GA COLD ROLLED STEEL	.053 min. x 1.677 x .620 x 93.500 formed
11A	2	LAMINATED GLASS (34.750 X 75.000 X .312) Old Castle	LAMINATED GLASS	34.750 X 74.750 X .312
11B	2	LAMINATED GLASS (24.000 X 80.000 X .312) Old Castle	LAMINATED GLASS	23.750 X 79.750 X .312
11C	2	LAMINATED GLASS (24.000 X 36.000 X .312) Old Castle	LAMINATED GLASS	23.750 X 35.750 X .312
11D	2	LAMINATED GLASS (24.000 X 47.000)	LAMINATED GLASS	23.750 X 46.750 X .312
12	2	AIR LOUVERS (VLF-IGHRC)	GLASS KIT	34.000 X 75.000
13B	1	DORMA CL859D X 3/4" FIRE LATCH	CH LOCK	
13D	1	DORMA DB050D	DEADLOCK	
13G	1	STRIKE 5001 118	STEEL	
14	1	ROCKWOOD 585 SURFACE BOLTS		
15C	2	CLOSER REINFORCEMENT	14 GA COLD ROLLED STEEL	.072 min. X 1.677 X 6.000 X 18.000 (formed)
15E	2	FULL HEIGHT LOCK CHANNEL REINFORCEMENT	14 GA COLD ROLLED STEEL	.072 MIN. X 1.677 X 6.000 X 93.500 (formed)
16	4	DOOR SKINS (PROJ. WELDED ON 2 1/2 CENTERS TO CHANLS)	18 GA COLD ROLLED STEEL	.042 min. x 49.515 x 95.125 (flat)
17	1	NATIONAL GUARD NG 803V	THRESHOLD	
18	8	DOOR HINGE REINFORCEMENTS	9 GA COLD ROLLED STEEL	1.32 min. x 1.375 x 4.500
19A	8	3/8" FLAT HEAD EXPANSION SHELL ANCHOR BOLT	3/8" X 5 (2 1/2" MIN EMBEDMENT)	3/8 X 5.000
19B	6	3/8" FLAT HEAD WOOD SCREW/LAG BOLT	3/8" X 5 (3" MIN EMBEDMENT)	3/8 X 5.000
19C	AS NEEDED	WIRE MASONRY ANCHOR	3/8 X 8 3/4	3/8 X 8 3/4
20	AS NEEDED	NATIONAL GUARD PRODUCTS 5050B-20	VINYL BULB	
21A	AS NEEDED	ALL PURPOSE SILICONE CAULK		
21B	AS NEEDED	DOW 995 SILICONE CAULK		
22	AS NEEDED	GLAZING TAPE		
23	1	INACTIVE LEAF ASTRAGAL	14 GA COLD ROLLED STEEL	.072 min. X 1.70 X 95.125
24	AS NEEDED	CUT OUT REINFORCEMENT	16 GA COLD ROLLED STEEL	.053 min. x 1.677 x .620
25	8	STANDARD WT. 4 1/2" STEEL BALL BEARING HINGES		4 1/2" X 4 1/2"
26	2	HONEYCOMB CORE (STEEL STIFFENED, POLYSTYRENE OPT.)		
27	1	SURFACE BOLT ANGLE REINFORCEMENT	3 GA STEEL ANGLE REINFORCEMENT	250 X 1.5 X 1.5
28	AS NEEDED	GLAZING BEAD		
29	4	"C" CHANNEL	16 GA COLD ROLLED STEEL	5.75 X .750 X 120
30	AS NEEDED	#8 OVAL HEAD TEK SCREW (12" OC/6" FROM STOP)		#8 X 1.500
31	AS NEEDED	8" CMU BLOCK FILLED WITH 2000 PSI MORTAR		
32	AS NEEDED	POURED CONCRETE 2000 PSI (MIN)		
33	1	WOOD BUCK		



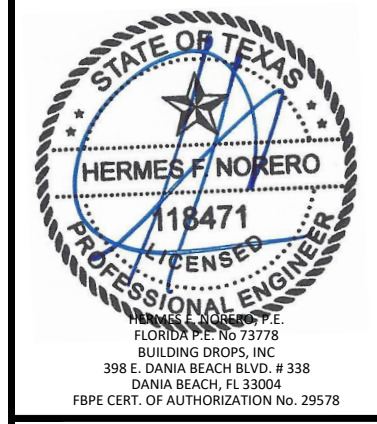
155 REPUBLIC DRIVE
 MCKENZIE, TN 38201
 PH: (800) 799-3667 FX: (731) 352-2556

TITLE:
 DL 418 GLAZED DOORS
 & ME416 FRAMES
 CYL. W/ DB ELEVATION, ANCHOR
 LAYOUT, BOM & DETAILS

PREPARED BY:
 BUILDING DROPS, INC.
 398 E. DANIA BEACH BLVD., STE. 338
 DANIA BEACH, FL 33004
 PH: (954) 399-8478
 FAX: (954) 744-4738
 WEB: www.buildingdrops.com

REMARKS	BY	DATE
2018 IBC UPDATE	CA	3.28.22

THE INSTALLATION DETAILS DESCRIBED HEREIN ARE GENERIC AND MAY NOT REFLECT ACTUAL CONDITIONS FOR A SPECIFIC SITE. IF SITE CONDITIONS CAUSE INSTALLATION TO DEVIATE FROM THE REQUIREMENTS DETAILED HEREIN, A LICENSED ENGINEER OR ARCHITECT SHALL PREPARE SITE SPECIFIC DOCUMENTS FOR USE WITH THIS DOCUMENT.

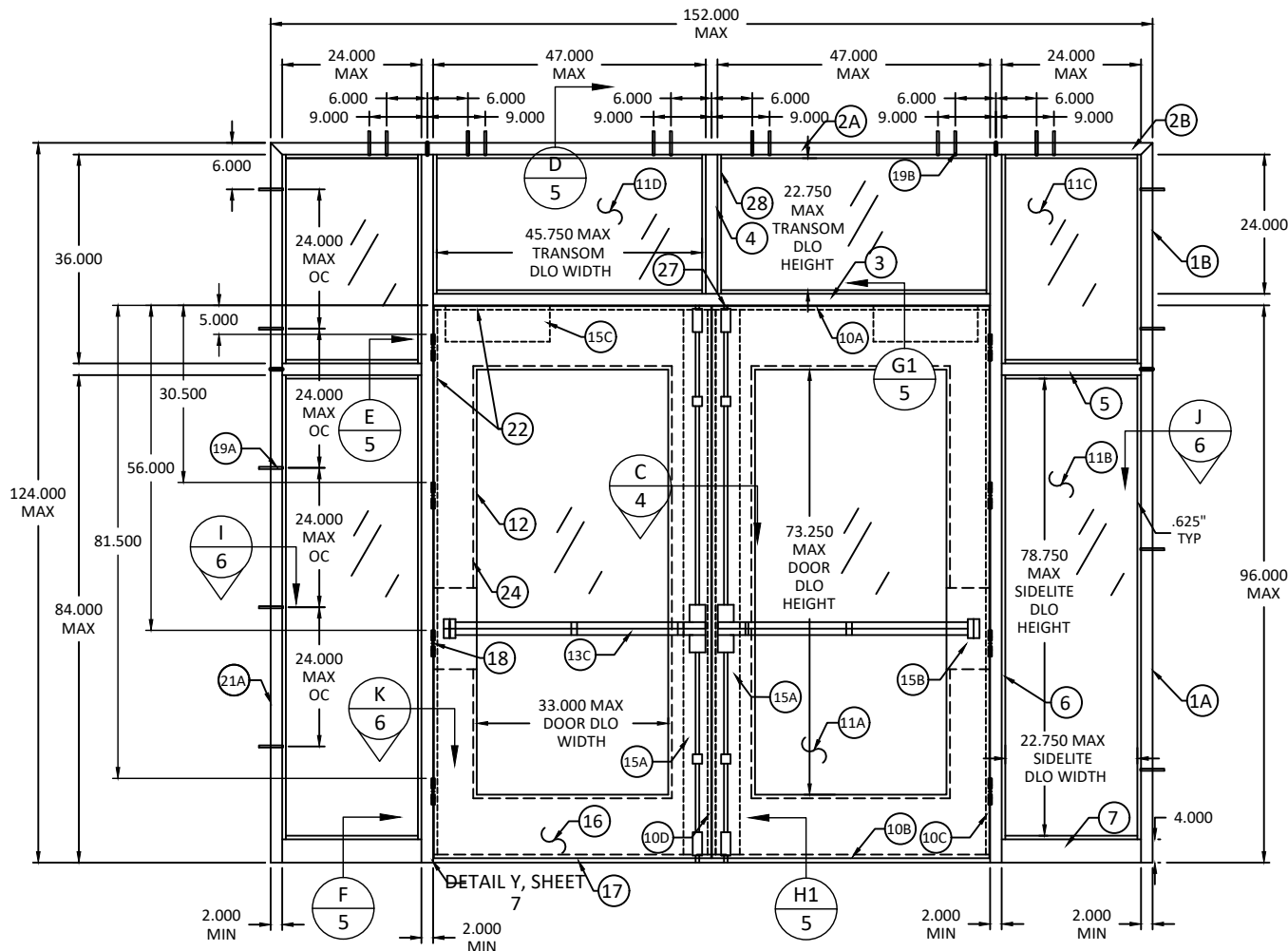


HERMES F. NORERO, P.E.
 FLORIDA P.E. No. 73778
 BUILDING DROPS, INC
 398 E. DANIA BEACH BLVD. # 338
 DANIA BEACH, FL 33004
 FBPE CERT. OF AUTHORIZATION No. 29578

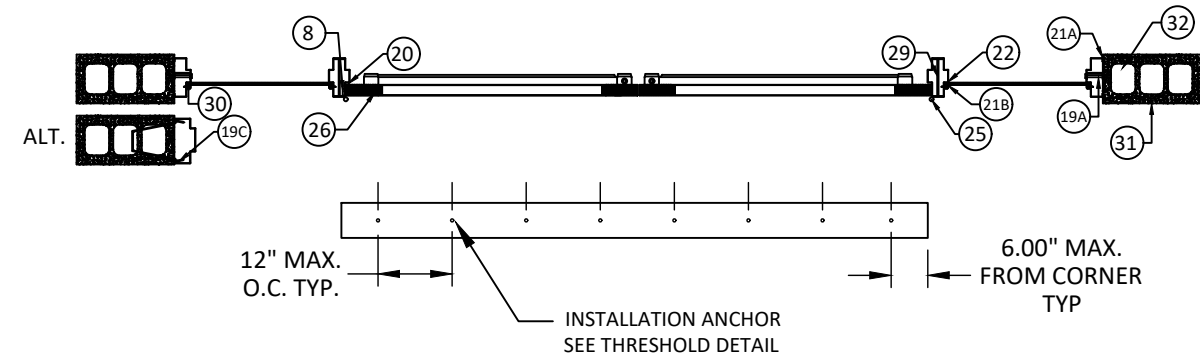
DATE: 03.17.17
 DWG. BY: MSS
 CHK. BY: HFN
 SCALE: NTS
 DWG. #: RDF020

SHEET: 3 OF 10

*FASTENERS SHOWN ARE TYPICAL/MINIMUM

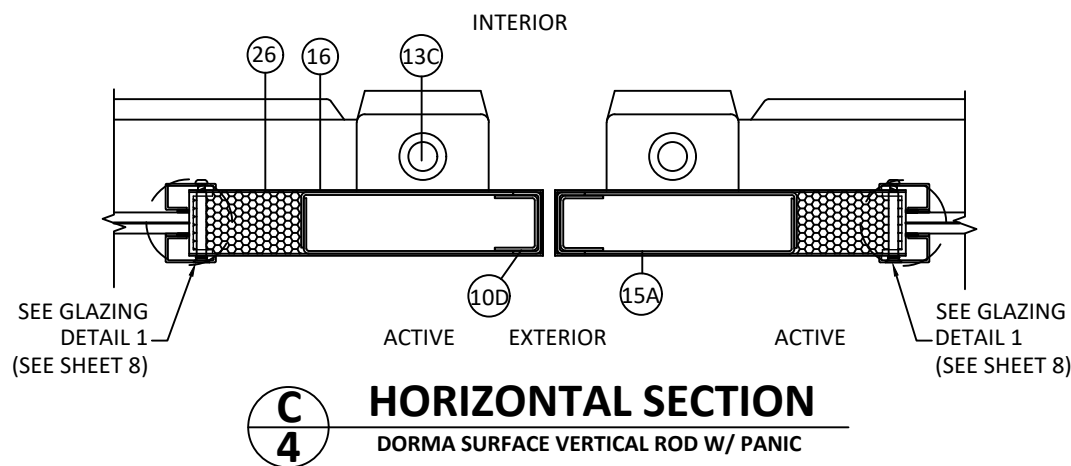


ELEVATION C
PAIR DOOR W/ SIDELITES & TRANSOM.
SURFACE VERTICAL ROD



SILL

Item	Qty	Description	Material	Dimensions (in.)
1A	1 PR	70 5.750 DOUBLE SWING JAMB PAIR	16 GA COLD ROLLED STEEL	.053 min. X 5.750 X 86.000 (formed)
1B	1 PR	30 5.750 DOUBLE SWING JAMB PAIR	16 GA COLD ROLLED STEEL	.053 min. X 5.750 X 36.000 (formed)
2A	1	98" 5.750 2" FACE DOUBLE OPENING HEADER	16 GA COLD ROLLED STEEL	.053 min. X 5.750 X 98.000 (formed)
2B	2	27" 5.750 2" FACE DOUBLE OPENING HEADER	16 GA COLD ROLLED STEEL	.053 min. X 5.750 X 27.000 (formed)
3	1	MULLION 96" X 2" FACE	16 GA COLD ROLLED STEEL	.053 min. X 5.750 X 96.000 (formed)
4	1	MULLION 24" X 2" FACE	16 GA COLD ROLLED STEEL	.053 min. X 5.750 X 24.000 (formed)
5	2	MULLION 24" X 2" FACE	16 GA COLD ROLLED STEEL	.053 min. X 5.750 X 24.000 (formed)
6	2	MULLION 122" X 2" FACE	16 GA COLD ROLLED STEEL	.053 min. X 5.750 X 122.000 (formed)
7	2	4" SILL	16 GA COLD ROLLED STEEL	.053 min. X 5.750 X 24.000 (formed)
8	2	HINGE REINFORCING FRAME	9 GA COLD ROLLED/HOT ROLLED STEEL	.132 min. x 7.50 x 1.625
9	2	BASE ANCHOR	16 GA COLD ROLLED STEEL	.053 min. X 1.875 X 1.875 (formed)
10A	2	TOP CHANNELS	16 GA COLD ROLLED STEEL	.053 min. x 1.677 x .620 x 47.563 formed
10B	2	BOTTOM CHANNELS	16 GA COLD ROLLED STEEL	.053 min. x 1.677 x .620 x 47.563 formed
10C	2	HINGE CHANNELS	16 GA COLD ROLLED STEEL	.053 min. x 1.677 x .620 x 93.500 formed
10D	2	LOCK CHANNELS	16 GA COLD ROLLED STEEL	.053 min. x 1.677 x .620 x 93.500 formed
11A	2	LAMINATED GLASS (34.750 X 75.000 X .312) Old Castle	LAMINATED GLASS	34.750 X 74.750 X .312
11B	2	LAMINATED GLASS (24.000 X 80.000 X .312) Old Castle	LAMINATED GLASS	23.750 X 79.750 X .312
11C	2	LAMINATED GLASS (24.000 X 36.000 X .312) Old Castle	LAMINATED GLASS	23.750 X 35.750 X .312
11D	2	LAMINATED GLASS (24.000 X 47.000)	LAMINATED GLASS	23.750 X 46.750 X .312
12	2	AR LOUVERS (VLF-IGHRC)	GLASS KIT	34.000 X 75.000
13C	1	DORMA HCF9400SVR		
15A	2	CONTINUOUS HARDWARE REINFORCEMENT	14 GA COLD ROLLED STEEL	1.677 X 6 X (DOOR HEIGHT - 11)
15B	2	EXIT DEVICE REINFORCEMENT	14 GA COLD ROLLED STEEL	1.677 X 5.313 X 14.000 (formed)
15C	2	CLOSER REINFORCEMENT	14 GA COLD ROLLED STEEL	.072 min. x 1.677 x 6.000 X 18.000 (form)
16	4	DOOR SKINS (PROJ. WELDED ON 2 1/2 CENTERS TO CHAN'L'S)	18 GA COLD ROLLED STEEL	.042 min. x 49.515 x 95.125 (flat)
17	1	NATIONAL GUARD NG 803V	THRESHOLD	
18	8	DOOR HINGE REINFORCEMENTS	9 GA COLD ROLLED STEEL	.132 min. x 1.375 x 4.500
19A	8	3/8" FLAT HEAD EXPANSION SHELL ANCHOR BOLT	3/8" X 5 (2 1/2" MIN EMBEDMENT)	3/8 X 5.000
19B	6	3/8" FLAT HEAD WOOD SCREWLAG BOLT	3/8" X 5 (3" MIN EMBEDMENT)	3/8 X 5.000
19C	AS NEEDED	WIRE MASONRY ANCHOR	3/8 X 8 3/4	3/8 X 8 3/4
20	AS NEEDED	NATIONAL GUARD PRODUCTS 5050B-20	VINYL BULB	
21A	AS NEEDED	ALL PURPOSE SILICONE CAULK		
21B	AS NEEDED	DOW995 SILICONE CAULK		
22	AS NEEDED	GLAZING TAPE		
23	1	INACTIVE LEAF ASTRAGAL	14 GA COLD ROLLED STEEL	.072 min. X 1.70 X 95.125
24	AS NEEDED	CUT OUT REINFORCEMENT	16 GA COLD ROLLED STEEL	.053 min. x 1.677 x .620
25	8	STANDARD WT. 4 1/2" STEEL BALL BEARING HINGES		4 1/2" X 4 1/2"
26	2	HONEYCOMB CORE (STEEL STIFFENED, POLYSTYRENE OPT.)		
27	1	SURFACE BOLT ANGLE REINFORCEMENT	3 GA STEEL ANGLE REINFORCEMENT	250 X 1.5 X 1.5
28	AS NEEDED	GLAZING BEAD		.042 X .750 X .625
29	4	"C" CHANNEL	16 GA COLD ROLLED STEEL	5.75 X .750 X 120
30	AS NEEDED	#8 OVAL HEAD TEK SCREW (12" OC/6" FROM STOP		#8 X 1.500
31	AS NEEDED	8" CMU BLOCK FILLED WITH 2000 PSIMORTAR		
32	AS NEEDED	POURED CONCRETE 2000 PSI (MIN)		
33	1	WOOD BUCK		



C 4 HORIZONTAL SECTION
DORMA SURFACE VERTICAL ROD W/ PANIC



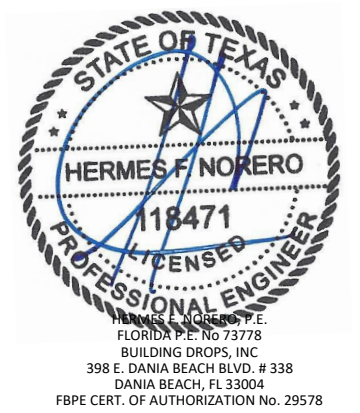
155 REPUBLIC DRIVE
 MCKENZIE, TN 38201
 PH: (800) 799-3667 FX: (731) 352-2556

TITLE: DL 418 GLAZED DOORS & ME416 FRAMES
 SVR ELEVATION, ANCHOR LAYOUT, BOM & DETAILS

PREPARED BY: BUILDING DROPS, INC.
 398 E. DANIA BEACH BLVD., STE. 338
 DANIA BEACH, FL 33004
 PH: (954) 399-8478
 FAX: (954) 744-4738
 WEB: www.buildingdrops.com

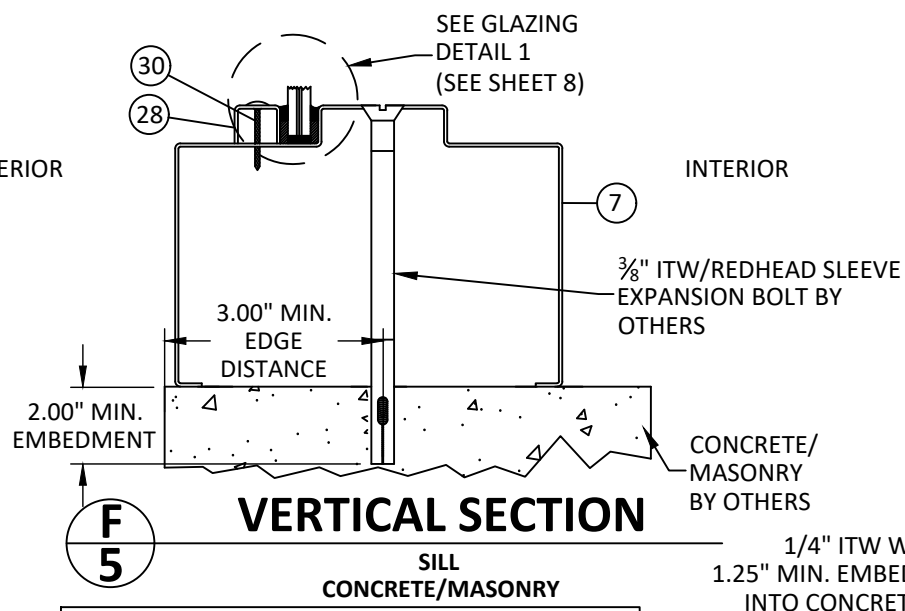
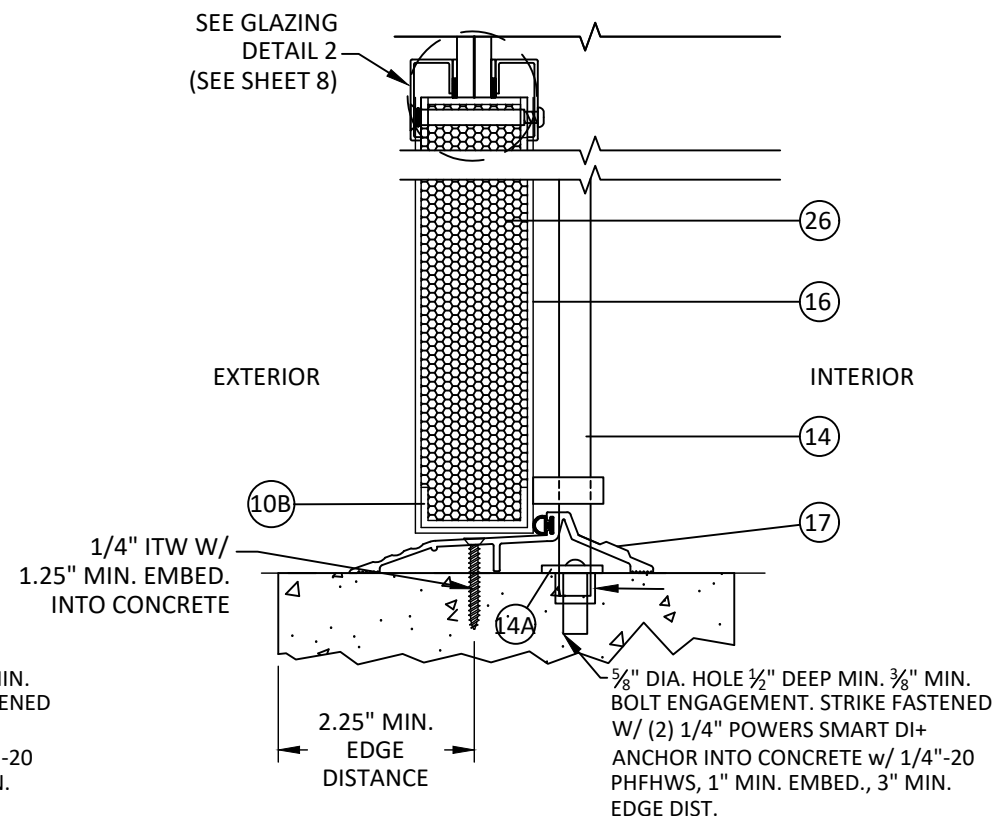
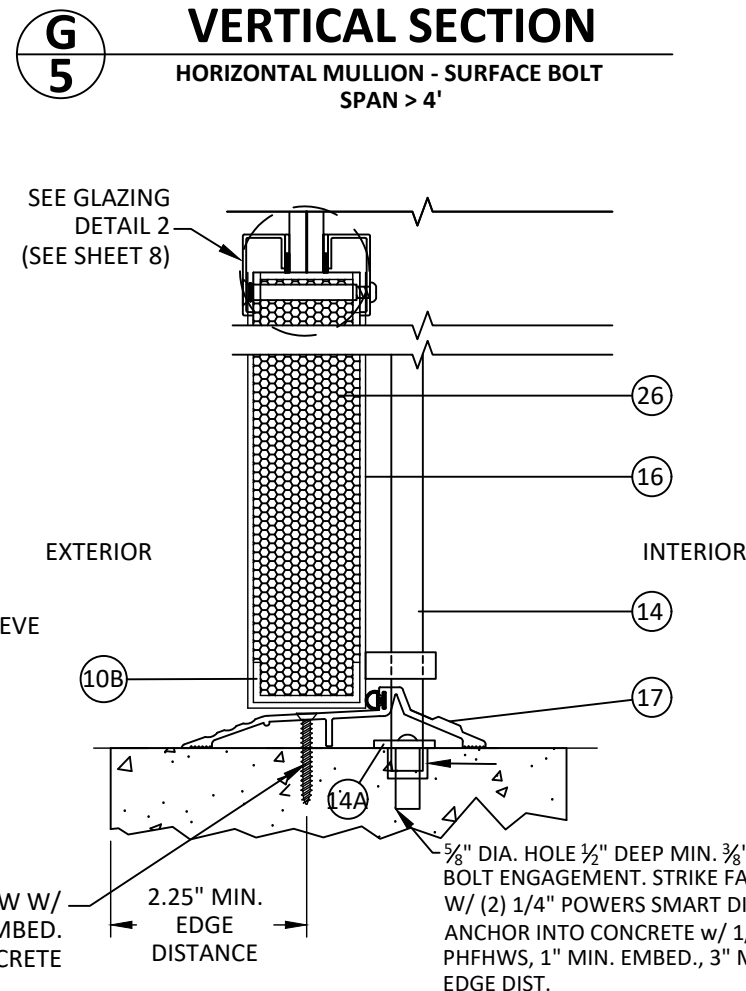
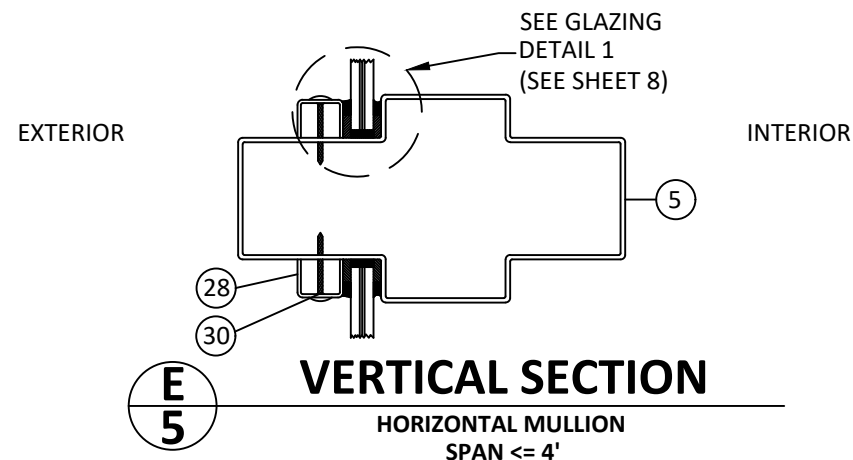
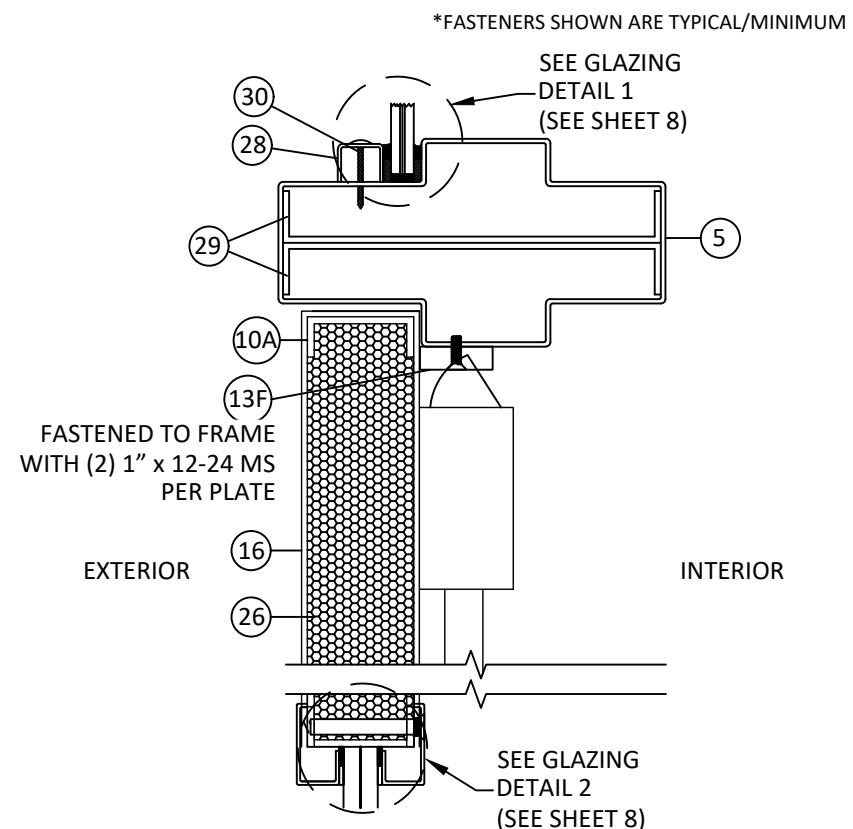
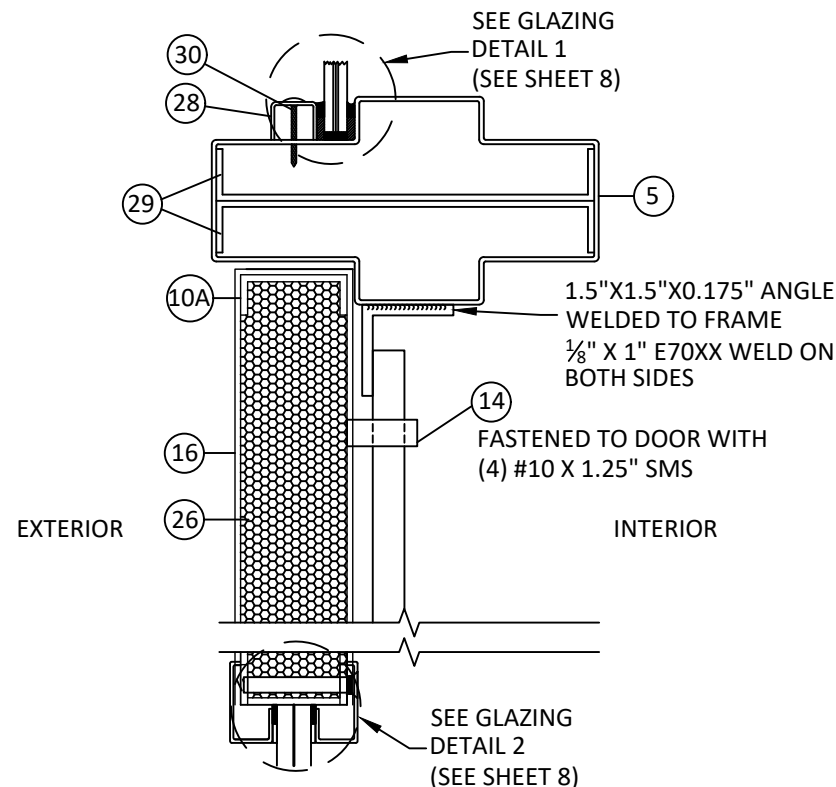
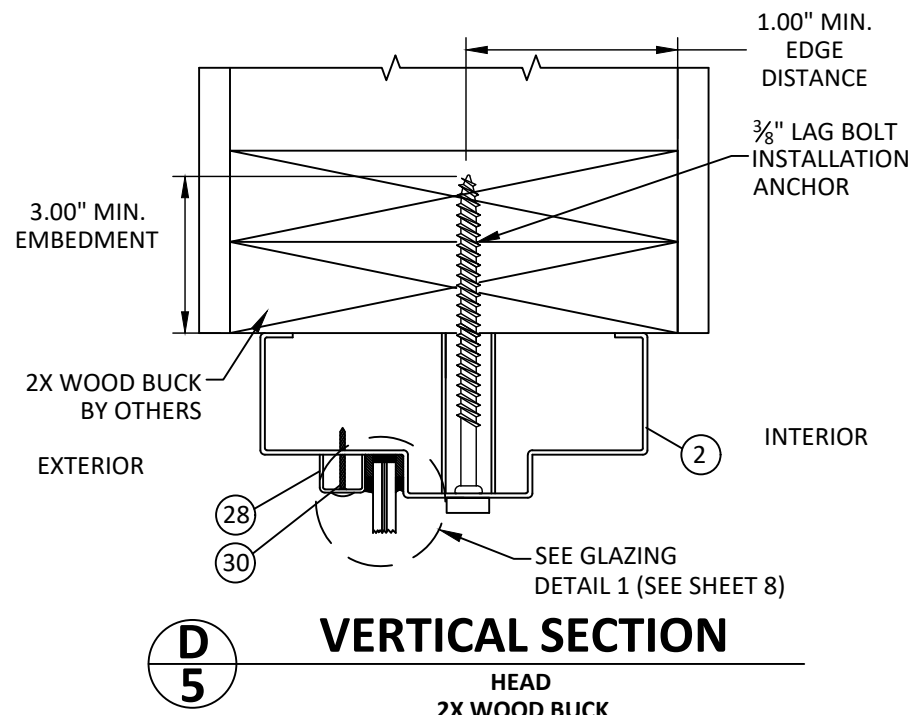
REMARKS	BY	DATE
2018 IBC UPDATE	CA	3.28.22

THE INSTALLATION DETAILS DESCRIBED HEREIN ARE GENERIC AND MAY NOT REFLECT ACTUAL CONDITIONS FOR A SPECIFIC SITE. IF SITE CONDITIONS CAUSE INSTALLATION TO DEVIATE FROM THE REQUIREMENTS DETAILED HEREIN, A LICENSED ENGINEER OR ARCHITECT SHALL PREPARE SITE SPECIFIC DOCUMENTS FOR USE WITH THIS DOCUMENT.



DATE:	03.17.17
DWG. BY:	MSS
CHK. BY:	HFN
SCALE:	NTS
DWG. #:	RDF020
SHEET:	4

3/30/2022 5:28 PM
s:\projects\republic doors\dl-22-0116 rfd\submittal - dr551, dr999, dr1000, dr1001, dr1002\dwg\5, dl418 w sidelites & borrowed lites (dl 7118)\rfd020 dl416 flush steel door.dwg



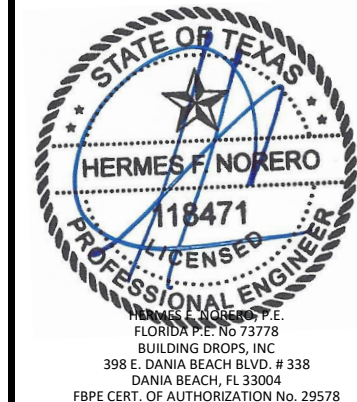
NOTE, ANCHORAGE AT SIDELITE SILL NOT REQUIRED PER ELEVATIONS ON SHEETS 2-4, DETAIL SHOWN TO BE USED FOR SIDELITES WIDER THAN 36", QUALIFIED ON A SITE SPECIFIC BASIS, OUTSIDE THE SCOPE OF THIS APPROVAL

TITLE:
DL 418 GLAZED DOORS
& ME416 FRAMES
VERTICAL SECTIONS

PREPARED BY:
BD
BUILDING DROPS
398 E. DANIA BEACH BLVD., STE. 338
DANIA BEACH, FL 33004
PH: (954) 399-8478
FAX: (954) 744-4738
WEB: www.buildingdrops.com

REMARKS	BY	DATE
2018 IBC UPDATE	CA	3.28.22

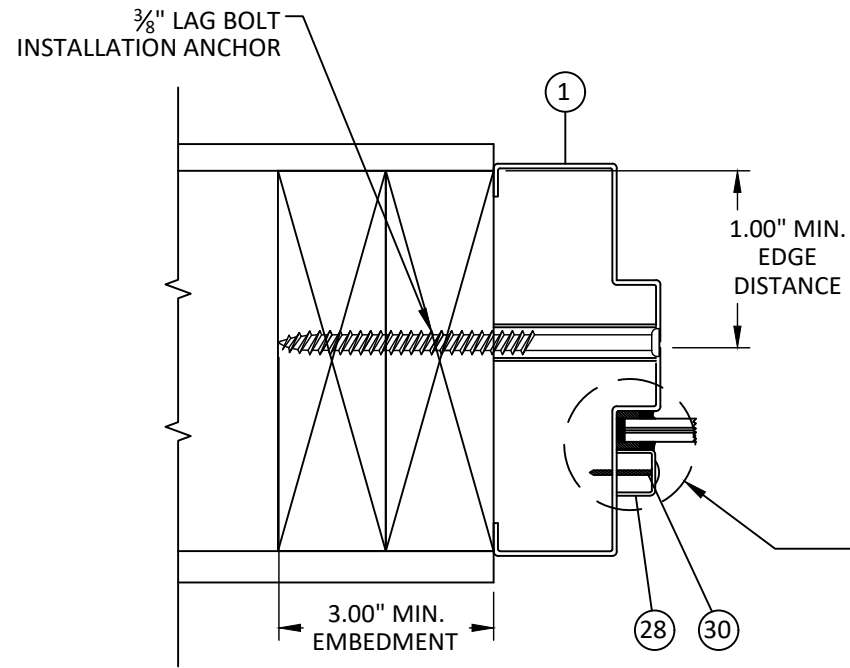
THE INSTALLATION DETAILS DESCRIBED HEREIN ARE GENERIC AND MAY NOT REFLECT ACTUAL CONDITIONS FOR A SPECIFIC SITE. IF SITE CONDITIONS CAUSE INSTALLATION TO DEVIATE FROM THE REQUIREMENTS DETAILED HEREIN, A LICENSED ENGINEER OR ARCHITECT SHALL PREPARE SITE SPECIFIC DOCUMENTS FOR USE WITH THIS DOCUMENT.



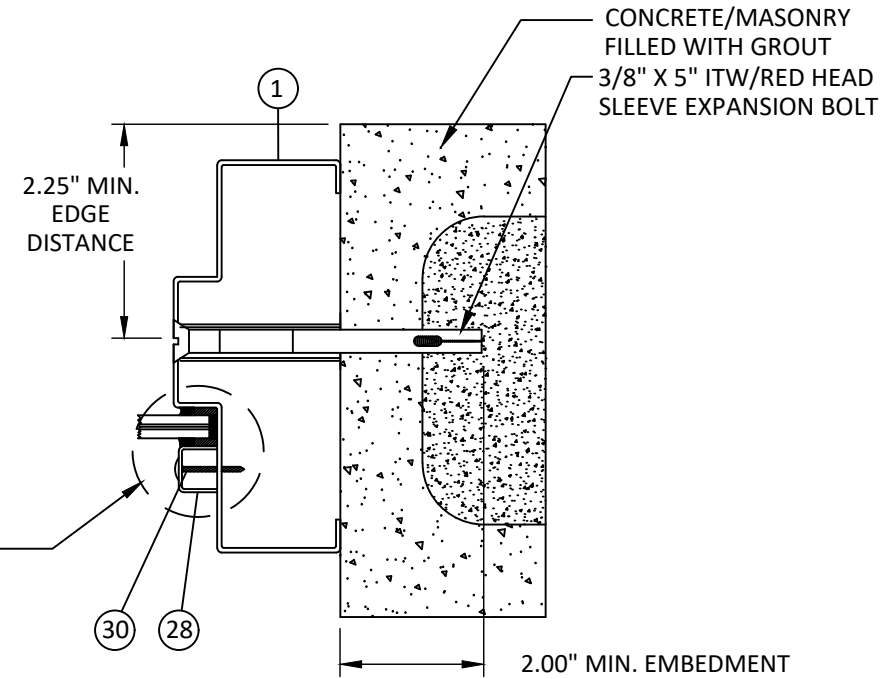
DATE:	03.17.17
DWG. BY:	MSS
CHK. BY:	HFN
SCALE:	NTS
DWG. #:	RDF020

SHEET:
5
OF 10

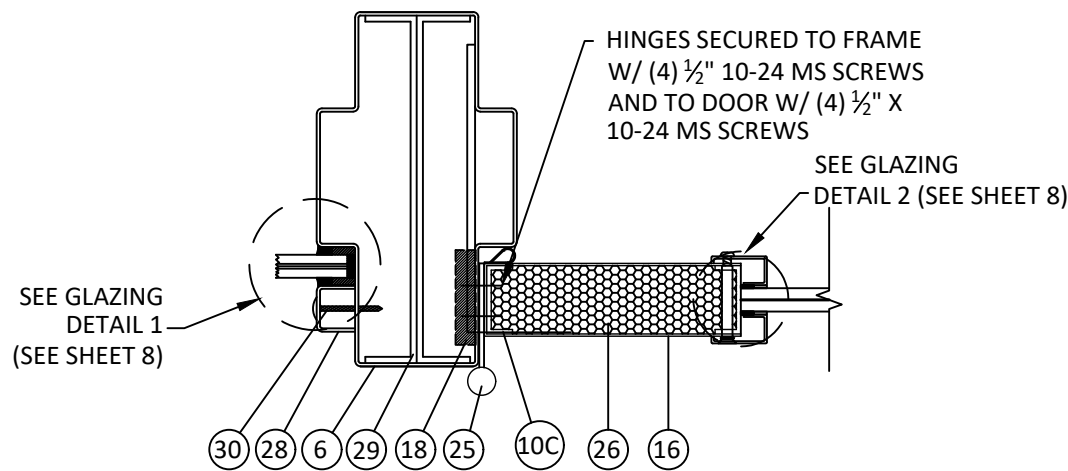
*FASTENERS SHOWN ARE TYPICAL/MINIMUM



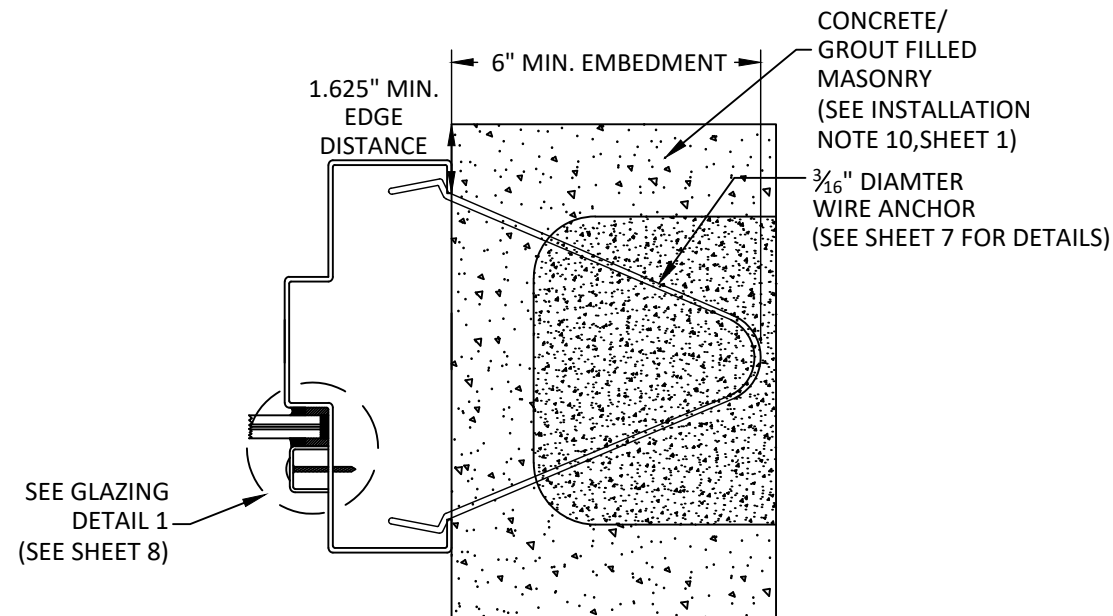
I
6 **HORIZONTAL SECTION**
3/8" X 5" LAG BOLT
JAMB - 2X WOOD FRAME



J
6 **HORIZONTAL SECTION**
EXPANSION BOLT WITH PIPE AND STRAP
JAMB - CONCRETE/MASONRY



K
6 **HORIZONTAL SECTION**
VERTICAL MULLION



L
6 **HORIZONTAL SECTION**
JAMB - CONCRETE/MASONRY
WIRE ANCHOR

Republic
doors · frames

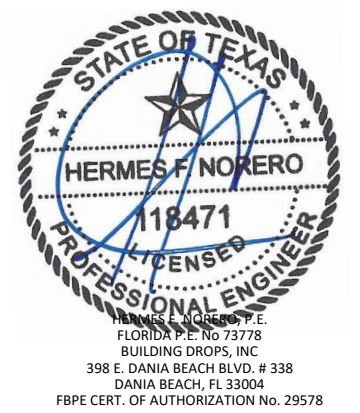
155 REPUBLIC DRIVE
MCKENZIE, TN 38201
PH: (800) 799-3667 FX: (731) 352-2556

TITLE:
DL 418 GLAZED DOORS
& ME416 FRAMES
HORIZONTAL SECTIONS

PREPARED BY:
BUILDING DROPS, INC.
398 E. DANIA BEACH BLVD., STE. 338
DANIA BEACH, FL 33004
PH: (954) 399-8478
FAX: (954) 744-4738
WEB: www.buildingdrops.com

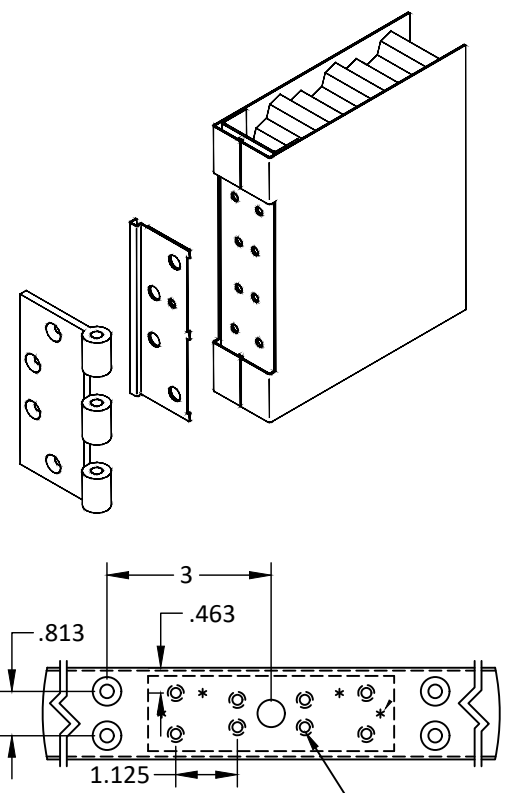
REMARKS	BY	DATE
2018 IBC UPDATE	CA	3.28.22

THE INSTALLATION DETAILS DESCRIBED HEREIN ARE GENERIC AND MAY NOT REFLECT ACTUAL CONDITIONS FOR A SPECIFIC SITE. IF SITE CONDITIONS CAUSE INSTALLATION TO DEVIATE FROM THE REQUIREMENTS DETAILED HEREIN, A LICENSED ENGINEER OR ARCHITECT SHALL PREPARE SITE SPECIFIC DOCUMENTS FOR USE WITH THIS DOCUMENT.



DATE:	03.17.17	
DWG. BY:	MSS	CHK. BY: HFN
SCALE:	NTS	
DWG. #:	RDF020	
SHEET:	6	

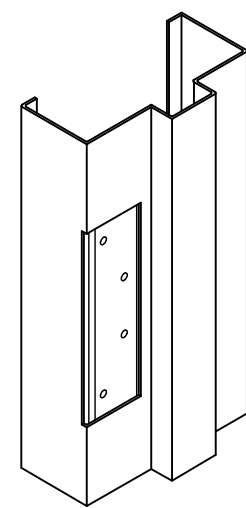
3/30/2022 5:28 PM
s:\projects\republic-doors\dl-22-0116 rdi submittal - dr551, dr999, dr1000, dr1001, dr1002\dwgs\5. dl18 w sidelites & borrowed lites (id 7118)\rdf020 dl16 flush steel door.dwg



DETAIL X

ITEM# 18

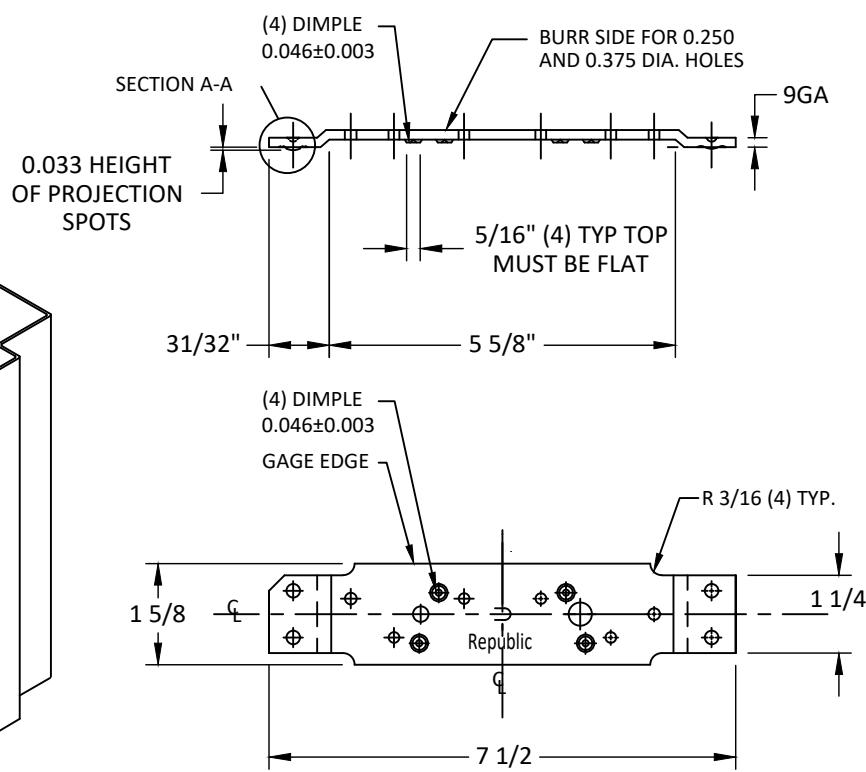
DOOR HINGE REINFORCEMENT



DETAIL Z

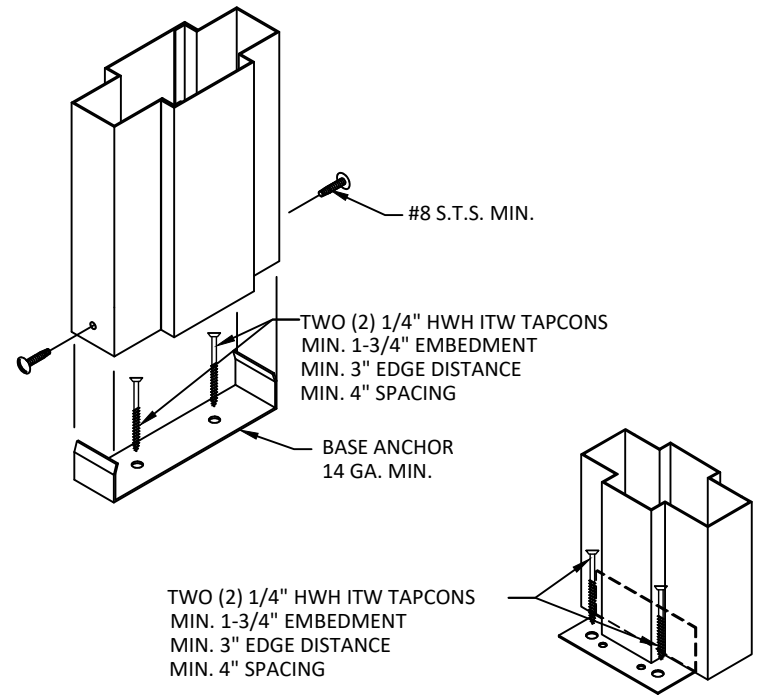
ITEM #8

FRAME HINGE REINFORCEMENT



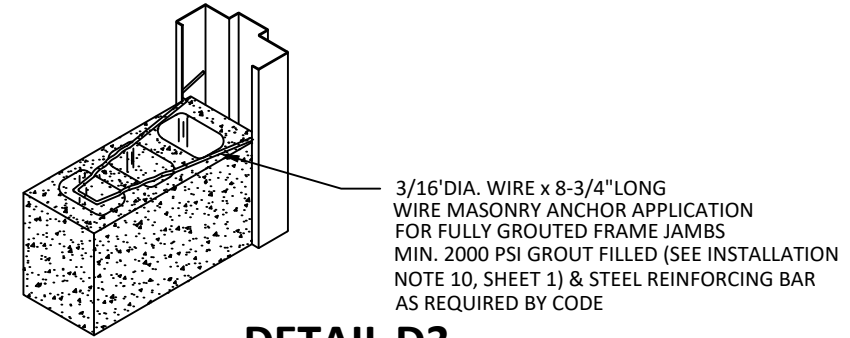
DETAIL Y

MULLION BASE ANCHOR



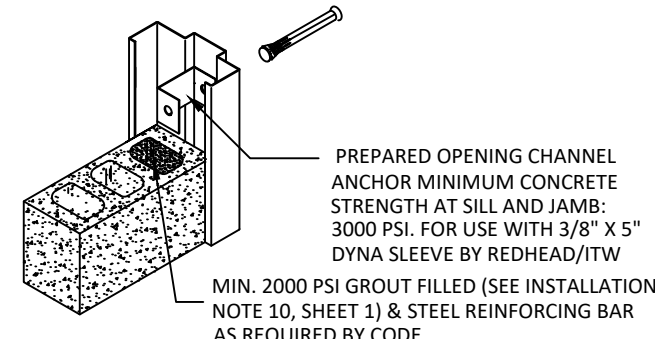
DETAIL W

JAMB CORNER BASE PLATE



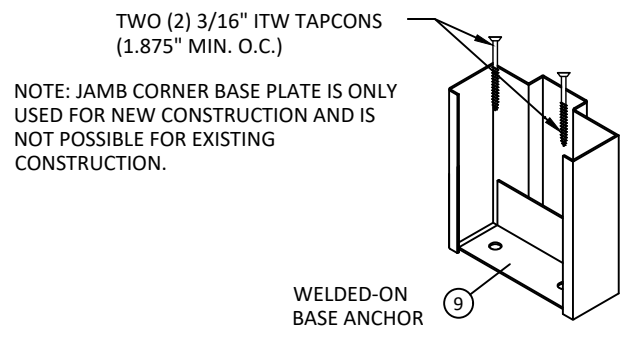
DETAIL D3

WIRE MASONRY ANCHOR



DETAIL D1

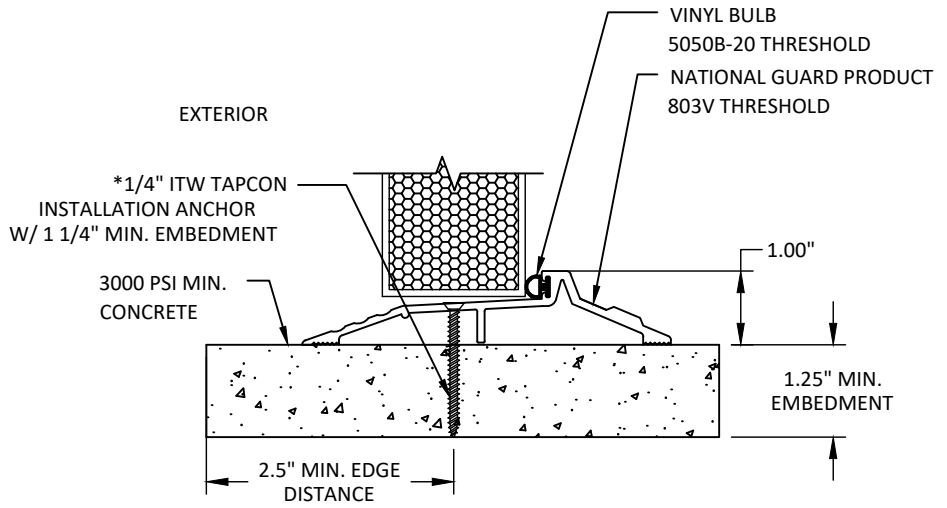
INSTALLATION ANCHOR W/ CHANNEL



DETAIL D2

INSTALLATION ANCHOR PIPE STRAP

*FASTENERS SHOWN ARE TYPICAL/MINIMUM



THRESHOLD DETAIL (SILL)

*NOTE: 803V THRESHOLD MAY BE INSTALLED WITH #12 WOOD SCREW TYPE INSTALLATION ANCHORS WHEN INTO 2X WOOD BUCK SUBSTRATES (MIN. SG= 0.55) WITH MINIMUM 1-1/2\"/>



155 REPUBLIC DRIVE
MCKENZIE, TN 38201
PH: (800) 799-3667 FX: (731) 352-2556

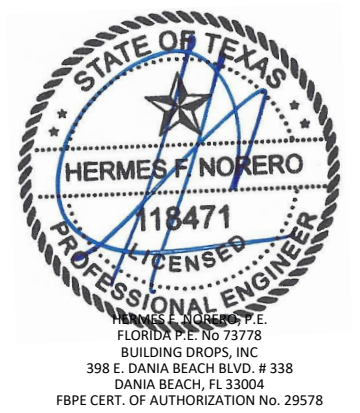
TITLE:
DL 418 GLAZED DOORS
& ME416 FRAMES
INSTALLATION &
REINFORCEMENT DETAILS

PREPARED BY:
BUILDING DROPS, INC.
398 E. DANIA BEACH BLVD., STE. 338
DANIA BEACH, FL 33004
PH: (954) 399-8478
FAX: (954) 744-4738
WEB: www.buildingdrops.com



REMARKS	BY	DATE
2018 IBC UPDATE	CA	3.28.22

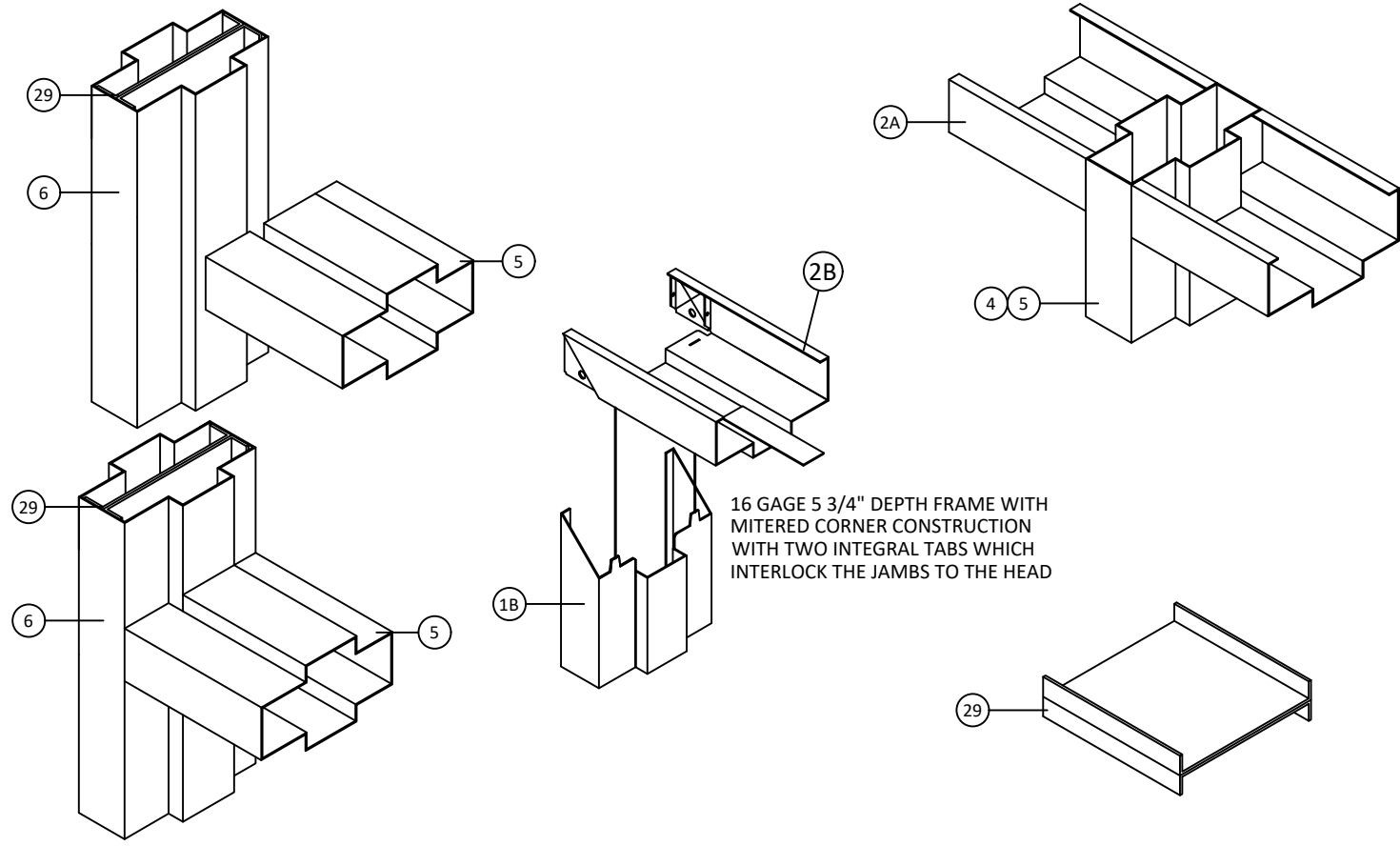
THE INSTALLATION DETAILS DESCRIBED HEREIN ARE GENERIC AND MAY NOT REFLECT ACTUAL CONDITIONS FOR A SPECIFIC SITE. IF SITE CONDITIONS CAUSE INSTALLATION TO DEVIATE FROM THE REQUIREMENTS DETAILED HEREIN, A LICENSED ENGINEER OR ARCHITECT SHALL PREPARE SITE SPECIFIC DOCUMENTS FOR USE WITH THIS DOCUMENT.



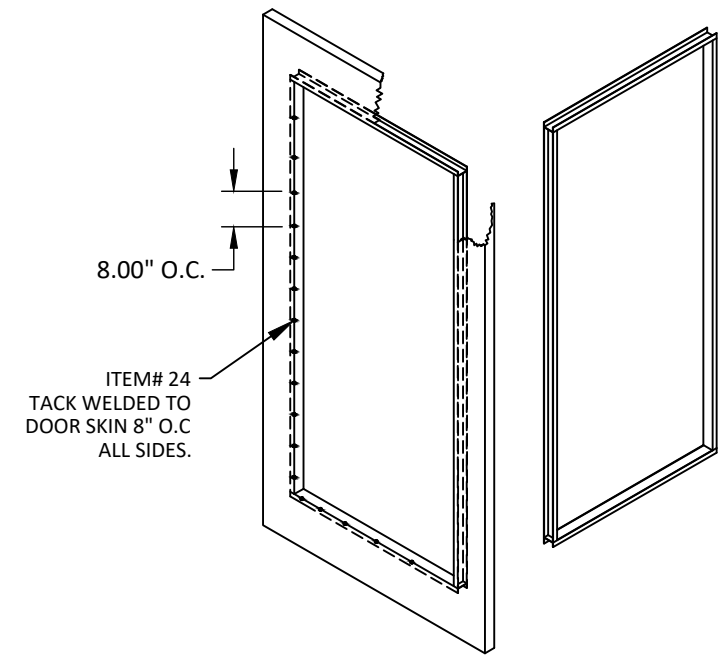
HERMES F. NORERO, P.E.
FLORIDA P.E. No. 73778
BUILDING DROPS, INC
398 E. DANIA BEACH BLVD. # 338
DANIA BEACH, FL 33004
FBPE CERT. OF AUTHORIZATION No. 29578

DATE:	03.17.17	
DWG. BY:	MSS	CHK. BY: HFN
SCALE:	NTS	
DWG. #:	RDF020	
SHEET:	7	

*FASTENERS SHOWN ARE TYPICAL/MINIMUM

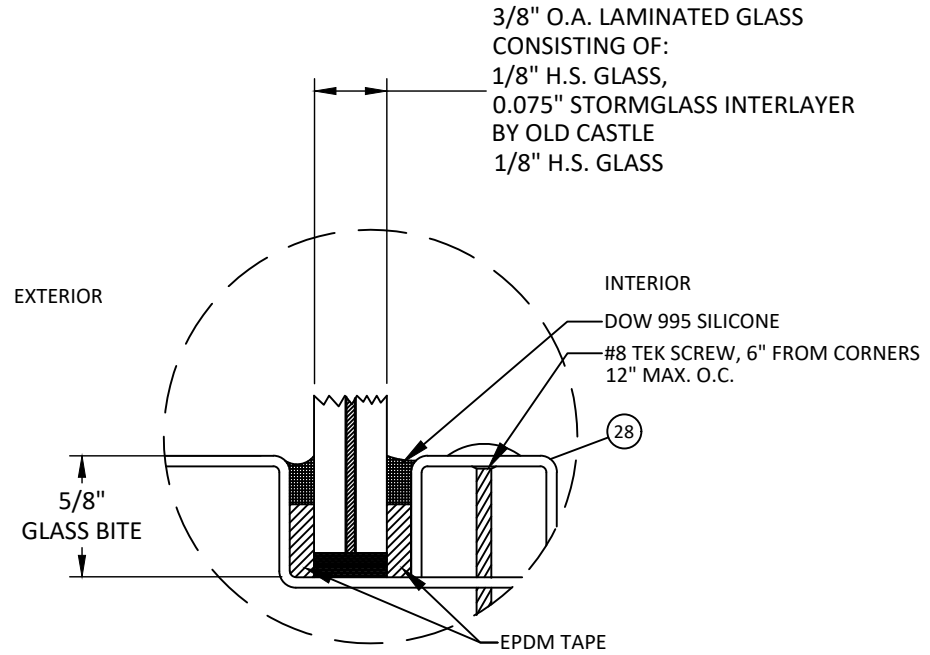


CORNER CONSTRUCTION DETAILS

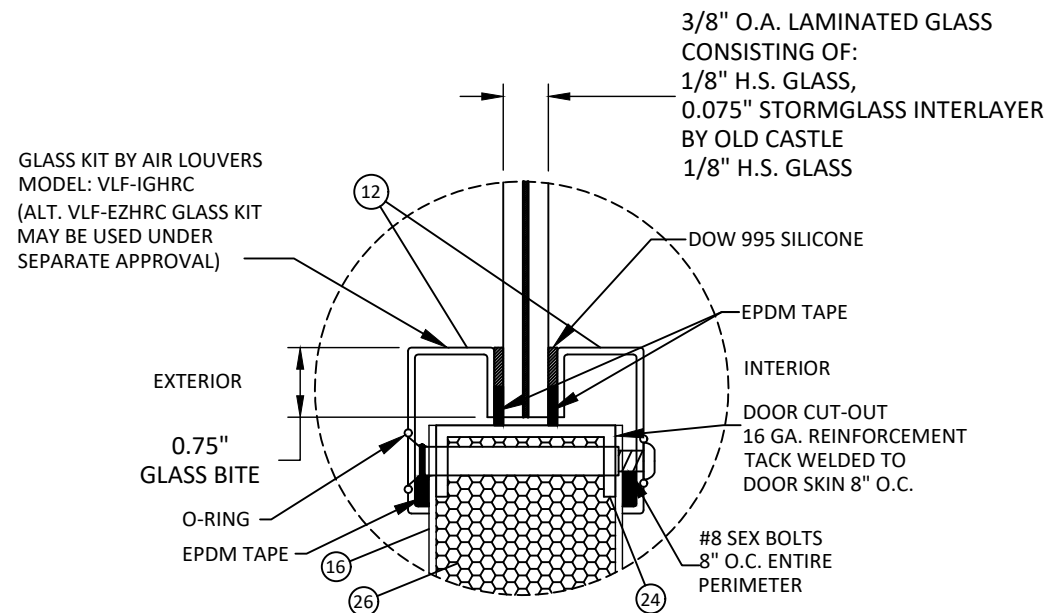


DOOR CUT-OUT REINFORCEMENT DETAIL

16 GA. (0.053") 1.667" X 0.62" CHANNEL WELDED TO DOOR SKIN



GLAZING DETAIL 1



GLAZING DETAIL 2



155 REPUBLIC DRIVE
MCKENZIE, TN 38201
PH: (800) 799-3667 FX: (731) 352-2556

TITLE: DL 418 GLAZED DOORS & ME416 FRAMES
CORNER, MULLION, DOOR CORE, & GLAZING DETAILS

PREPARED BY: BUILDING DROPS, INC.
398 E. DANIA BEACH BLVD., STE. 338
DANIA BEACH, FL 33004
PH: (954) 399-8478
FAX: (954) 744-4738
WEB: www.buildingdrops.com



REMARKS	BY	DATE
2018 IBC UPDATE	CA	3.28.22

THE INSTALLATION DETAILS DESCRIBED HEREIN ARE GENERIC AND MAY NOT REFLECT ACTUAL CONDITIONS FOR A SPECIFIC SITE. IF SITE CONDITIONS CAUSE INSTALLATION TO DEVIATE FROM THE REQUIREMENTS DETAILED HEREIN, A LICENSED ENGINEER OR ARCHITECT SHALL PREPARE SITE SPECIFIC DOCUMENTS FOR USE WITH THIS DOCUMENT.



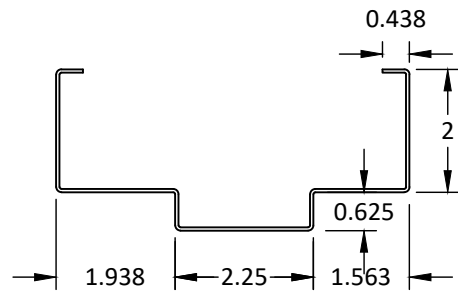
HERMES F. NORERO, P.E.
FLORIDA P.E. No. 73778
BUILDING DROPS, INC.
398 E. DANIA BEACH BLVD. # 338
DANIA BEACH, FL 33004
FBPE CERT. OF AUTHORIZATION No. 29578

DATE:	03.17.17
DWG. BY:	MSS
CHK. BY:	HFN
SCALE:	NTS
DWG. #:	RDF020

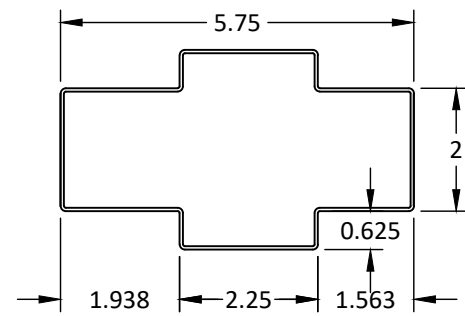
SHEET: 8 OF 10

*FASTENERS SHOWN ARE TYPICAL/MINIMUM

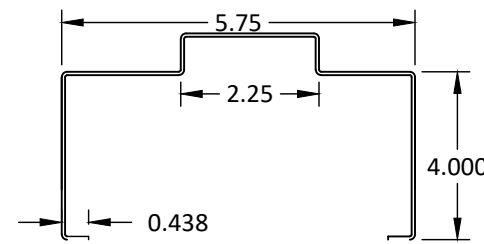
1 2 FRAME - JAMB/HEADER
16 GA. COLD ROLLED STEEL



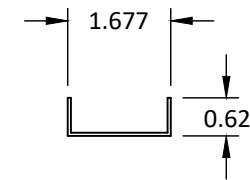
3 4 5 6 MULLION
16 GA. COLD ROLLED STEEL



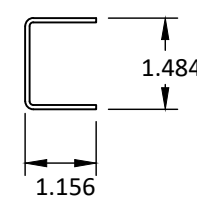
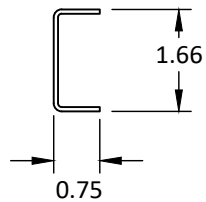
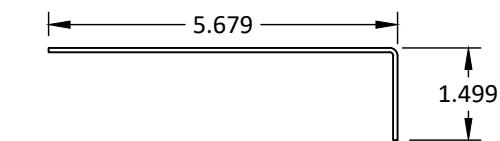
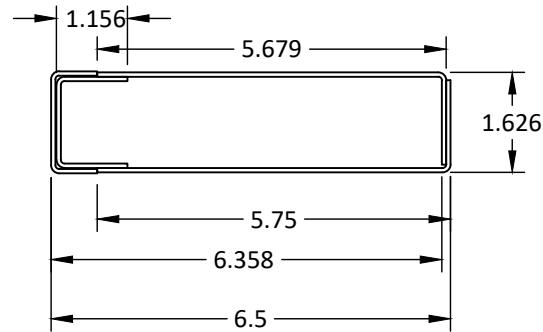
7 4" SILL
16 GA. COLD ROLLED STEEL



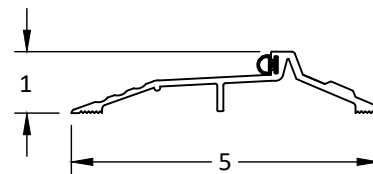
10 24 CHANNEL REINFORCEMENTS
16 GA. COLD ROLLED STEEL



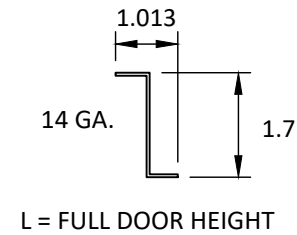
15 CLOSER/LOCK/SURFACE BOLT STILE REINFORCEMENT
14 GA COLD ROLLED STEEL



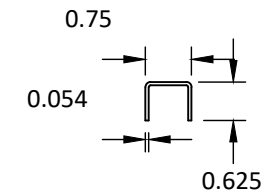
17 NATIONAL GUARD NG 803V
ALUMINUM



23 INACTIVE LEAF ASTRAGAL
14 GA COLD ROLLED STEEL

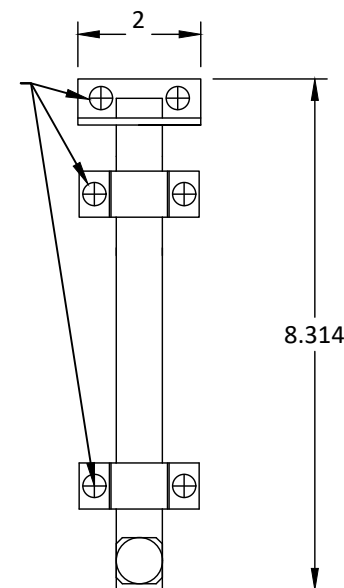


28 GLAZING BEAD
STEEL

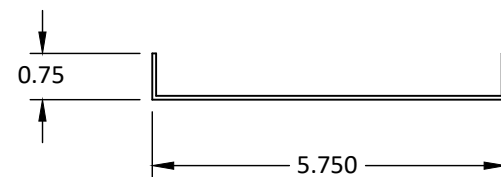


14 ROCKWOOD 585 SURFACE BOLT

#10 x 1.25" SMS (2)
THROUGH STRIKE
TO FRAME AND (2)
THROUGH EACH
BRACKET TO DOOR
SLAB



29 "C" CHANNEL
16 GA. COLD ROLLED STEEL



Republic
doors • frames

155 REPUBLIC DRIVE
MCKENZIE, TN 38201
PH: (800) 799-3667 FX: (731) 352-2556

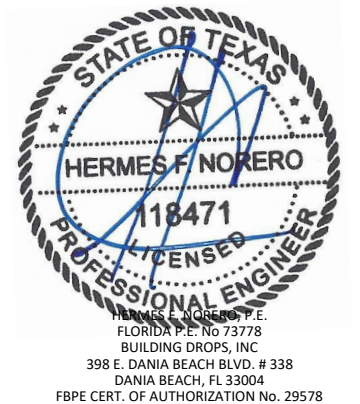
TITLE: DL 418 GLAZED DOORS
& ME416 FRAMES
COMPONENTS

PREPARED BY: BUILDING DROPS, INC.
398 E. DANIA BEACH BLVD., STE. 338
DANIA BEACH, FL 33004
PH: (954) 399-8478
FAX: (954) 744-4738
WEB: www.buildingdrops.com



REMARKS	BY	DATE
2018 IBC UPDATE	CA	3.28.22

THE INSTALLATION DETAILS DESCRIBED HEREIN ARE GENERIC AND MAY NOT REFLECT ACTUAL CONDITIONS FOR A SPECIFIC SITE. IF SITE CONDITIONS CAUSE INSTALLATION TO DEVIATE FROM THE REQUIREMENTS DETAILED HEREIN, A LICENSED ENGINEER OR ARCHITECT SHALL PREPARE SITE SPECIFIC DOCUMENTS FOR USE WITH THIS DOCUMENT.



DATE: 03.17.17

DWG. BY: MSS
CHK. BY: HFN

SCALE: NTS

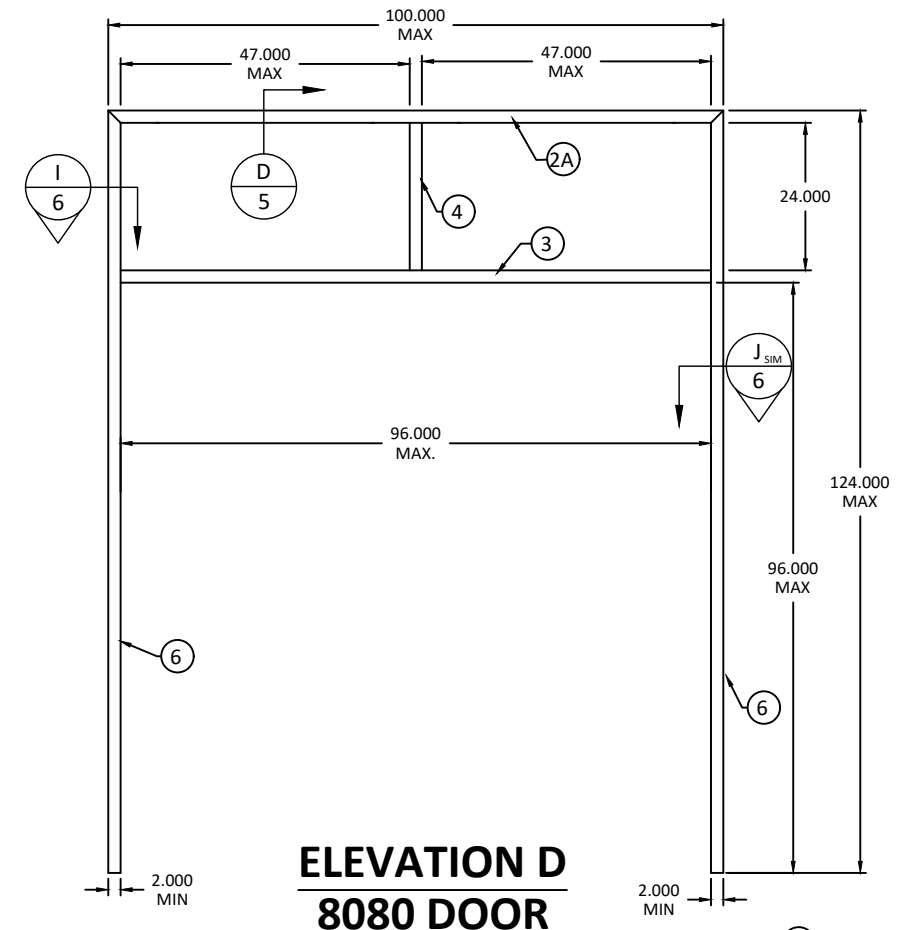
DWG. #: RDF020

SHEET: 9

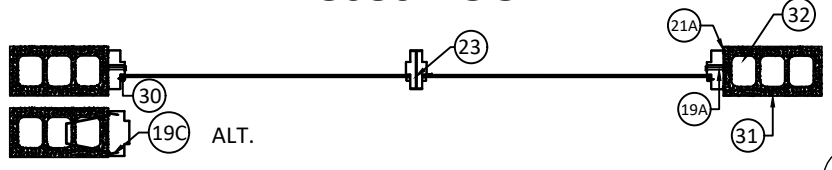
OF 10

3/30/2022 5:28 PM
s:\projects\republic\doors\dl-22-0116 rdi submittal - dr551 - dr999 - dr1000 - dr1001 - dr1002.dwg\5. dl1418 w sidelites & borrowed lites (id 7118).rdf020 dl1416 flush steel door.dwg

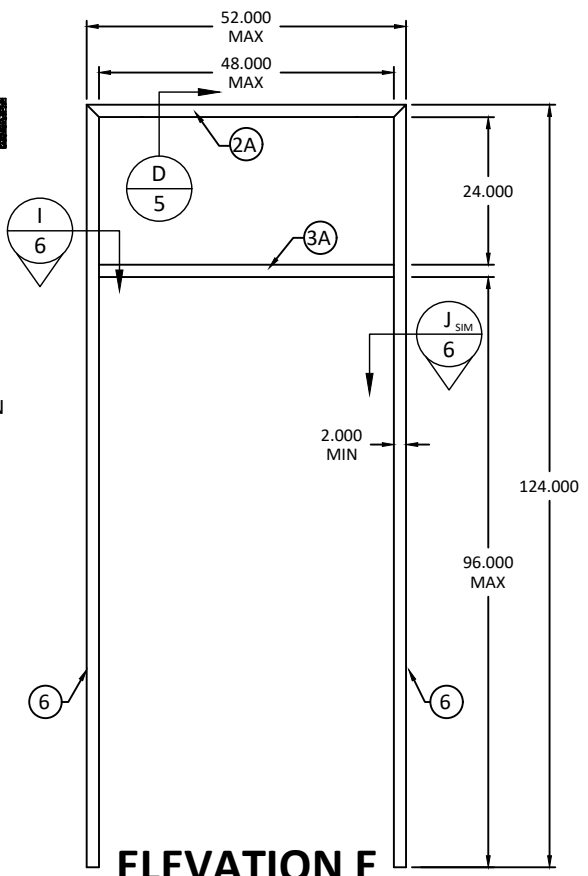
*FASTENERS SHOWN ARE TYPICAL/MINIMUM



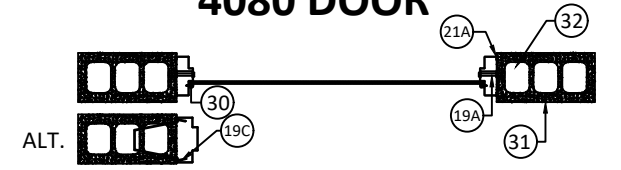
**ELEVATION D
8080 DOOR**



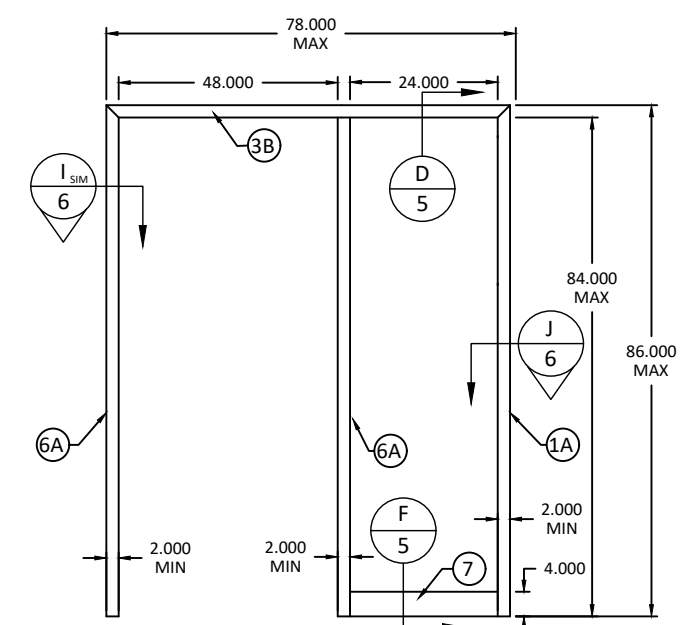
- QUALIFIED CONFIGURATION NOTES:**
- 1) OVERALL UNIT DIMENSIONS AND PANEL DIMENSIONS SHALL NOT EXCEED THOSE SHOWN.
 - 2) SEE GENERAL NOTES 5 FOR IMPACT RESISTANCE REQUIREMENTS
 - 3) DOOR PANELS SHALL BE INSTALLED WITH APPLICABLE REINFORCEMENTS AS SHOWN IN ELEVATIONS A, B, & C ON SHEETS 2, 3, & 4 RESPECTIVELY.
 - 4) ANCHOR LOCATIONS AND SPACING SHOWN IN ELEVATIONS A, B, & C ON SHEETS 2, 3, & 4 RESPECTIVELY APPLY TO CONFIGURATIONS SHOWN HEREIN.



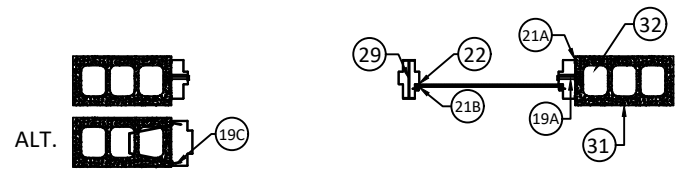
**ELEVATION E
4080 DOOR**



Item	Qty	Description	Material	Dimensions (in.)
1A	1 PR	70 5 750 DOUBLE SWING JAMB PAIR	16 GA COLD ROLLED STEEL	.053 min. X 5.750 X 86.000 (formed)
1B	1 PR	30 5 750 DOUBLE SWING JAMB PAIR	16 GA COLD ROLLED STEEL	.053 min. X 5.750 X 36.000 (formed)
2A	1	98" 5.750 2" FACE DOUBLE OPENING HEADER	16 GA COLD ROLLED STEEL	.053 min. X 5.750 X 98.000 (formed)
2B	2	27" 5.750 2" FACE DOUBLE OPENING HEADER	16 GA COLD ROLLED STEEL	.053 min. X 5.750 X 27.000 (formed)
3	1	MULLION 96" X 2" FACE	16 GA COLD ROLLED STEEL	.053 min. X 5.750 X 96.000 (formed)
4	1	MULLION 24" X 2" FACE	16 GA COLD ROLLED STEEL	.053 min. X 5.750 X 24.000 (formed)
5	2	MULLION 24" X 2" FACE	16 GA COLD ROLLED STEEL	.053 min. X 5.750 X 24.000 (formed)
6	2	MULLION 122" X 2" FACE	16 GA COLD ROLLED STEEL	.053 min. X 5.750 X 122.000 (formed)
7	2	4" SILL	16 GA COLD ROLLED STEEL	.053 min. X 5.750 X 24.000 (formed)
19A	8	3/8" FLAT HEAD EXPANSION SHELL ANCHOR BOLT	3/8" X 5 (2 1/2" MIN EMBEDMENT)	3/8 X 5.000
19B	6	3/8" FLAT HEAD WOOD SCREW/LAG BOLT	3/8" X 5 (3" MIN EMBEDMENT)	3/8 X 5.000
19C	AS NEEDED	WIRE MASONRY ANCHOR	3/8 X 8 3/4	3/8 X 8 3/4
20	AS NEEDED	NATIONAL GUARD PRODUCTS 5050B-20	VINYL BULB	
21A	AS NEEDED	ALL PURPOSE SILICONE CAULK		
21B	AS NEEDED	DOW 995 SILICONE CAULK		
22	AS NEEDED	GLAZING TAPE		
29	4	"C" CHANNEL	16 GA COLD ROLLED STEEL	5.75 X .750 X 120
30	AS NEEDED	#8 OVAL HEAD TEK SCREW (12" OC/6" FROM STOP		#8 X 1.500
31	AS NEEDED	8" CMU BLOCK FILLED WITH 2000 PSI MORTAR		
32	AS NEEDED	POURED CONCRETE 2000 PSI (MIN)		
33	1	WOOD BUCK		



**ELEVATION F
3070 DOOR**



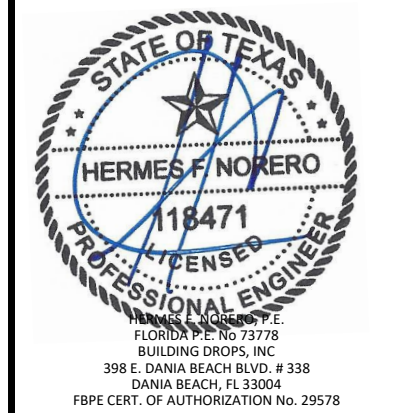
155 REPUBLIC DRIVE
MCKENZIE, TN 38201
PH: (800) 799-3667 FX: (731) 352-2556

TITLE: DL 418 GLAZED DOORS & ME416 FRAMES QUALIFIED CONFIGURATIONS & BOM

PREPARED BY: BUILDING DROPS, INC.
398 E. DANIA BEACH BLVD., STE. 338
DANIA BEACH, FL 33004
PH: (954) 399-8478
FAX: (954) 744-4738
WEB: www.buildingdrops.com

REMARKS	BY	DATE
2018 IBC UPDATE	CA	3.28.22

THE INSTALLATION DETAILS DESCRIBED HEREIN ARE GENERIC AND MAY NOT REFLECT ACTUAL CONDITIONS FOR A SPECIFIC SITE. IF SITE CONDITIONS CAUSE INSTALLATION TO DEVIATE FROM THE REQUIREMENTS DETAILED HEREIN, A LICENSED ENGINEER OR ARCHITECT SHALL PREPARE SITE SPECIFIC DOCUMENTS FOR USE WITH THIS DOCUMENT.



DATE: 03.17.17

DWG. BY: MSS CHK. BY: HFN

SCALE: NTS

DWG. #: RDF020

SHEET: 10