

PREMIER STEEL DOORS & FRAMES

SWR-S20-4 SEVERE WINDSTORM RATED DOOR - OUTSWING (IMPACT)



2840 STERLINGTON ROAD
MONROE, LA 71203
PH: (318) 361-0796

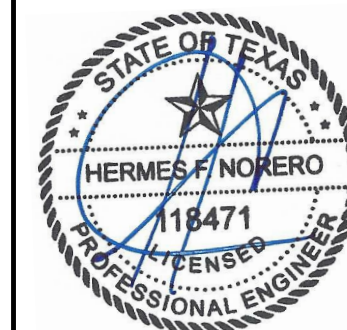
TITLE: SWR-S20-4 SEVERE WINDSTORM RATED DOOR (IMPACT)
GENERAL NOTES, DESIGN PRESSURE TABLE & TYPICAL ELEVATIONS

PREPARED BY: BUILDING DROPS, INC.
398 E. DANIA BEACH BLVD., STE. 338
DANIA BEACH, FL 33004
PH: (954) 399-8278
FAX: (954) 744-4738
WEB: www.buildingdrops.com



REMARKS	BY	DATE

THE INSTALLATION DETAILS DESCRIBED HEREIN ARE GENERIC AND MAY NOT REFLECT ACTUAL CONDITIONS FOR A SPECIFIC SITE. IF SITE CONDITIONS CAUSE INSTALLATION TO DEVIATE FROM THE REQUIREMENTS DETAILED HEREIN, A LICENSED ENGINEER OR ARCHITECT SHALL PREPARE SITE SPECIFIC DOCUMENTS FOR USE WITH THIS DOCUMENT.



HERMES F. NORERO, P.E.
TEXAS P.E. No. 118471
BUILDING DROPS, INC.
398 E. DANIA BEACH BLVD. # 338
DANIA BEACH, FL 33004
TBPE FIRM No. 13734

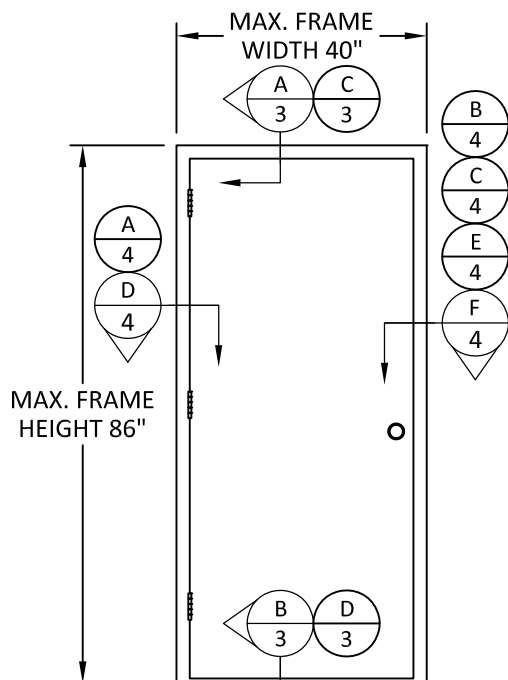
DATE: 10.21.22

DWG. BY: MS CHK. BY: HFN

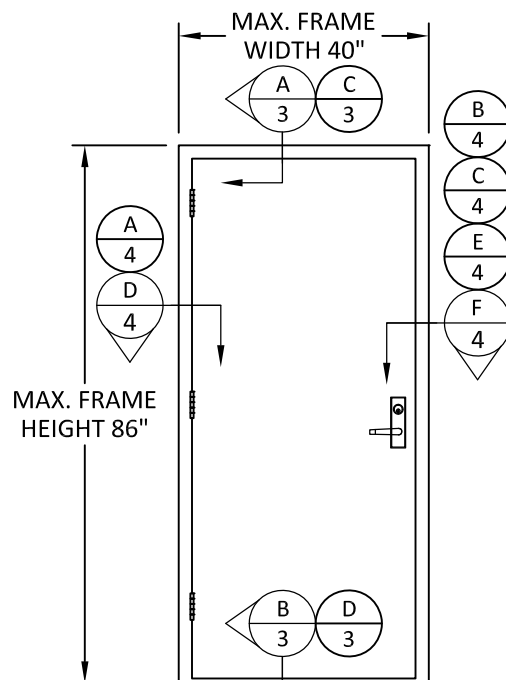
SCALE: NTS

DWG. #: PRM002

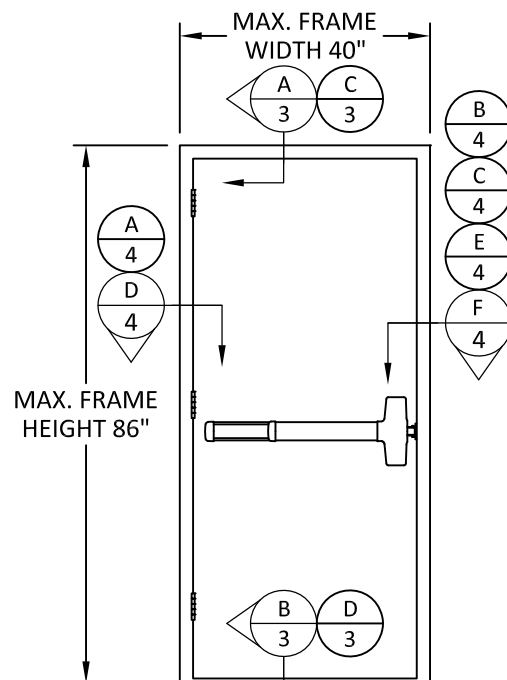
SHEET: 1



ELEVATION
CYLINDRICAL LOCK



ELEVATION
MORTISE LOCK



ELEVATION
RIM PANIC BAR EXIT DEVICE

GENERAL NOTES:

1. THE PRODUCT SHOWN HEREIN IS DESIGNED AND MANUFACTURED TO COMPLY WITH THE 2018 INTERNATIONAL BUILDING CODE (IBC) AND 2018 INTERNATIONAL RESIDENTIAL CODE (IRC). ALL PRODUCTS UNDER THE SCOPE OF THIS DOCUMENT HAVE BEEN EVALUATED ACCORDING TO THE FOLLOWING:
 - ASTM 330-14
 - ASTM E1886-13a
 - ASTM E1996-14a
2. ADEQUACY OF THE EXISTING STRUCTURAL CONCRETE/MASONRY, 2X AND METAL STUD FRAMING AS A MAIN WIND FORCE RESISTING SYSTEM CAPABLE OF WITHSTANDING AND TRANSFERRING APPLIED PRODUCT LOADS TO THE FOUNDATION IS THE RESPONSIBILITY OF THE ENGINEER OR ARCHITECT OF RECORD FOR THE PROJECT OF INSTALLATION.
3. 1X AND 2X BUCKS (WHEN USED) SHALL BE DESIGNED AND ANCHORED TO PROPERLY TRANSFER ALL LOADS TO THE STRUCTURE. BUCK DESIGN AND INSTALLATION IS THE RESPONSIBILITY OF THE ENGINEER OR ARCHITECT OF RECORD FOR THE PROJECT OF INSTALLATION.
4. INSTALL INDIVIDUAL INSTALLATION ANCHORS WITHIN A TOLERANCE OF ±1/4 INCH OF THE DEPICTED LOCATION IN THE ANCHOR LAYOUT DETAIL (I.E., WITHOUT CONSIDERATION OF TOLERANCES). TOLERANCES ARE NOT CUMULATIVE FROM ONE INSTALLATION ANCHOR TO THE NEXT.
5. THE INSTALLATION DETAILS DESCRIBED HEREIN ARE GENERIC AND MAY NOT REFLECT ACTUAL CONDITIONS FOR A SPECIFIC SITE. IF SITE CONDITIONS CAUSE INSTALLATION TO DEVIATE FROM THE REQUIREMENTS DETAILED HEREIN, A LICENSED ENGINEER OR ARCHITECT SHALL PREPARE SITE SPECIFIC DOCUMENTS FOR USE WITH THIS DOCUMENT.
6. APPROVED IMPACT PROTECTIVE SYSTEM **IS NOT REQUIRED TO** PROTECT THIS PRODUCT IN AREAS REQUIRING IMPACT RESISTANCE.
7. MATERIAL: STEEL

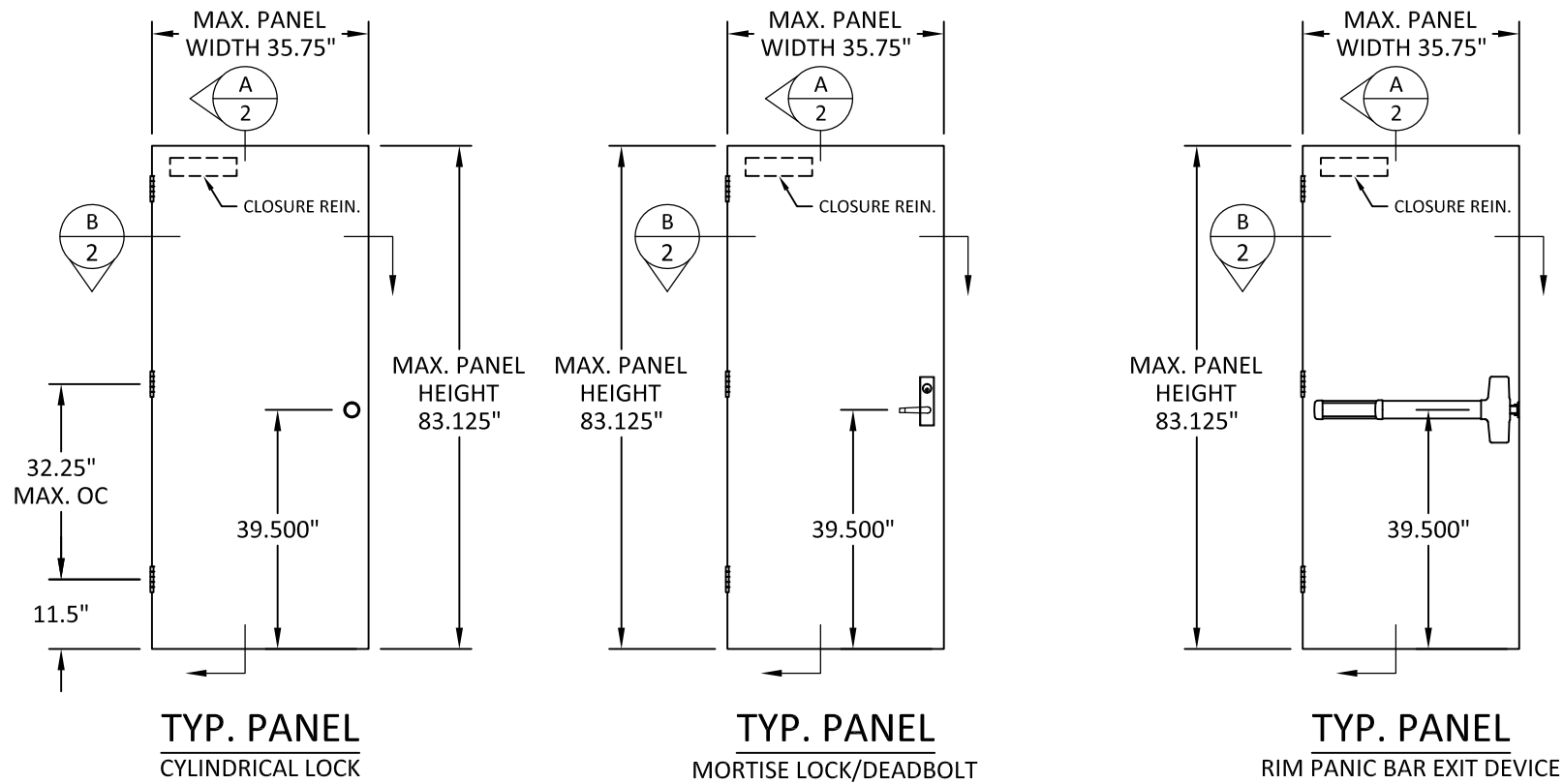
DESIGN PRESSURE TABLE		
FRAME SIZE	DESIGN PRESSURE	MISSILE RATING
40" X 86"	+/-50 PSF	LARGE & SMALL MISSILE IMPACT

TABLE OF CONTENTS	
SHEET	SHEET DESCRIPTION
1	GENERAL NOTES, DESIGN PRESSURE TABLE AND TYPICAL ELEVATIONS
2	DOOR PANEL DETAILS AND HARDWARE TABLE
3	VERTICAL SECTIONS
4	HORIZONTAL SECTIONS
5	ANCHOR LAYOUT AND INSTALLATION NOTES
6	COMPONENTS AND BILL OF MATERIALS

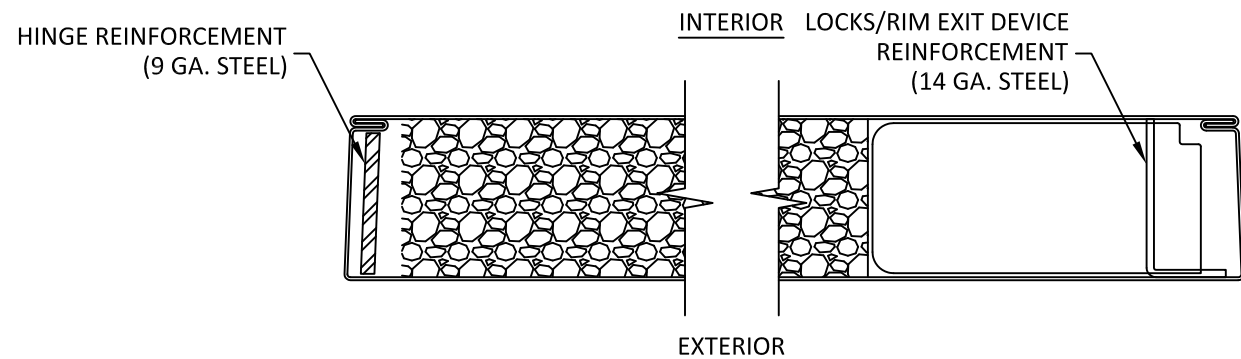
s:\projects\premier steel doors & frames\tdl-22-0922 - tdl submittal - swr-s18-4 & swr-s20-4 severe windstorm rated doors\dwgs\prmo02.dwg 11/8/2022 8:44 PM

s:\projects\premier steel doors & frames\tdl-22-0922 - tdl submittal - swr-s18-4 & swr-s20-4 severe windstorm rated doors\dwgs\prn002.dwg 11/8/2022 8:44 PM

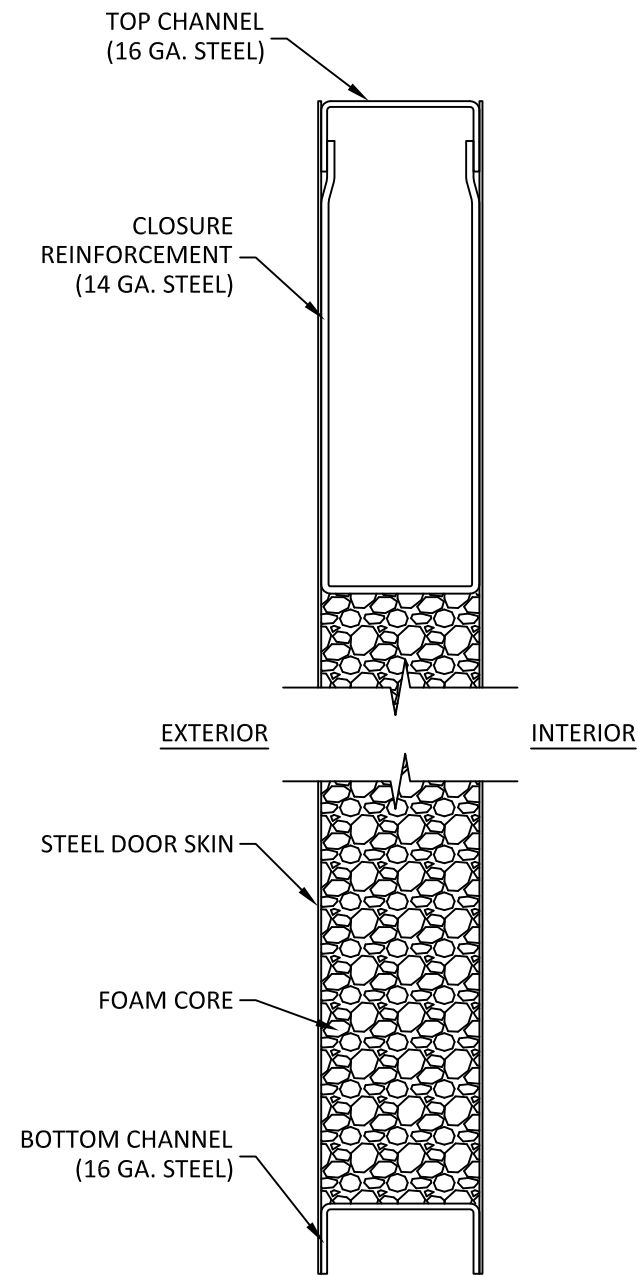
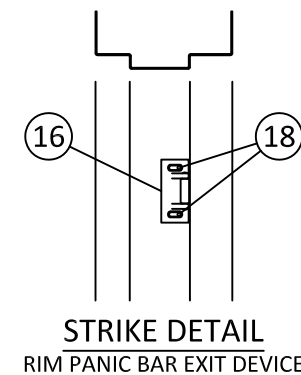
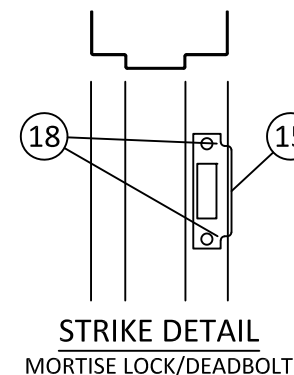
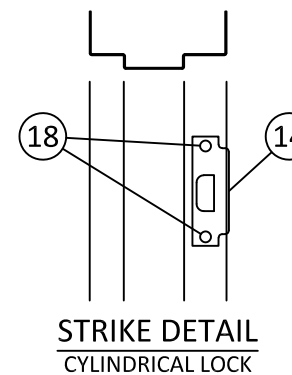
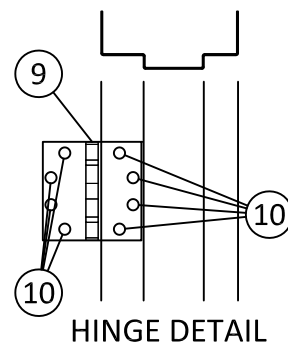
HARDWARE TABLE	
MANUFACTURER	MODEL
SCHLAGE	D-SERIES CYLINDRICAL LOCK
FALCON	MA (571) SERIES MORTISE LOCK/DEADBOLT
FALCON	25-R SERIES RIM EXIT DEVICE



STEEL DOOR SKIN: 20 GA. A60 GALV. (MIN. 0.032" THK.)
CORE MATERIAL: EPS FOAM (POLYSTYRENE - 1.0 PCF MIN. DENSITY)



B
2 HORIZONTAL SECTION



A
2 VERTICAL SECTION



2840 STERLINGTON ROAD
MONROE, LA 71203
PH: (318) 361-0796

TITLE: SWR-S20-4 SEVERE WINDSTORM RATED DOOR (IMPACT) DOOR PANEL DETAILS & HARDWARE TABLE

PREPARED BY: BUILDING DROPS, INC.
398 E. DANIA BEACH BLVD., STE. 338
DANIA BEACH, FL 33004
PH: (954) 399-8278
FAX: (954) 744-4738
WEB: www.buildingdrops.com



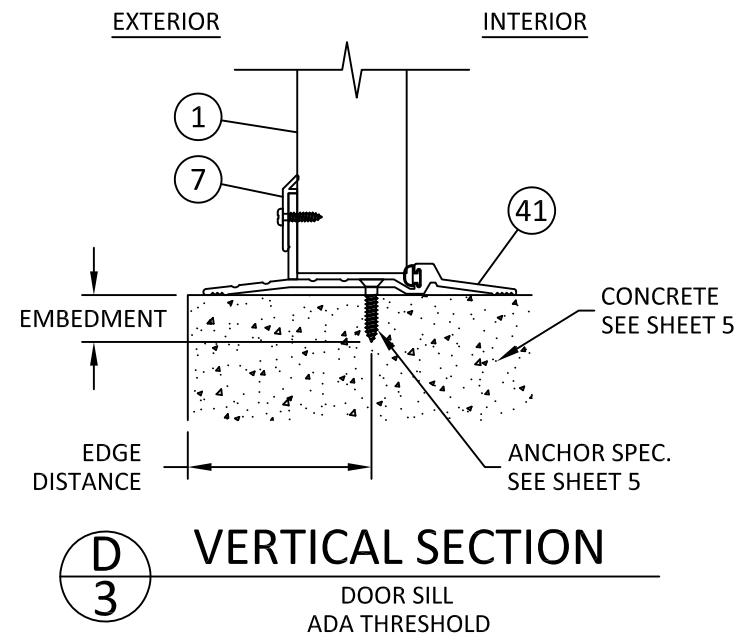
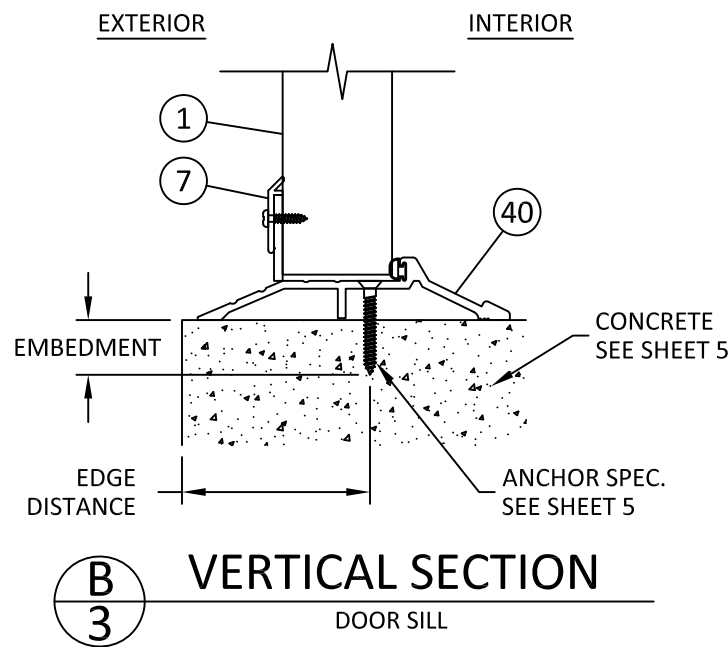
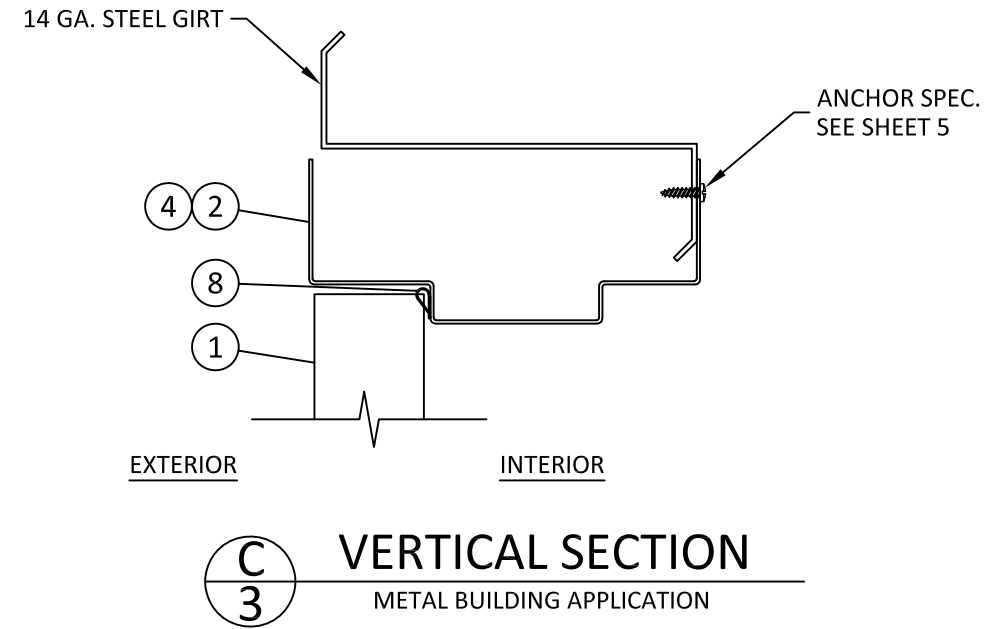
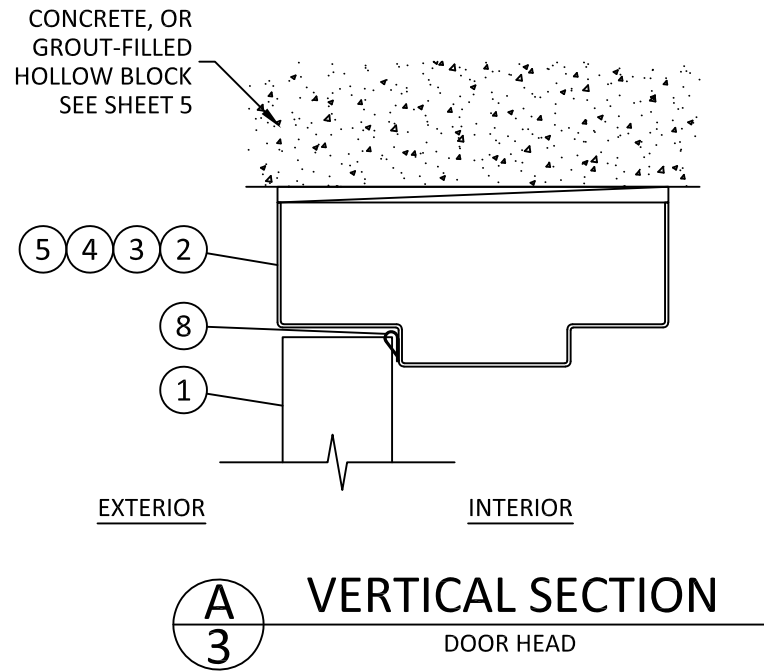
REMARKS	BY	DATE

THE INSTALLATION DETAILS DESCRIBED HEREIN ARE GENERIC AND MAY NOT REFLECT ACTUAL CONDITIONS FOR A SPECIFIC SITE. IF SITE CONDITIONS CAUSE INSTALLATION TO DEVIATE FROM THE REQUIREMENTS DETAILED HEREIN, A LICENSED ENGINEER OR ARCHITECT SHALL PREPARE SITE SPECIFIC DOCUMENTS FOR USE WITH THIS DOCUMENT.



HERMES F. NORERO, P.E.
TEXAS P.E. No. 118471
BUILDING DROPS, INC
398 E. DANIA BEACH BLVD. # 338
DANIA BEACH, FL 33004
TBPE FIRM No. 13734

DATE:	10.21.22
DWG. BY:	MS
CHK. BY:	HFN
SCALE:	NTS
DWG. #:	PRM002
SHEET:	2



2840 STERLINGTON ROAD
MONROE, LA 71203
PH: (318) 361-0796

TITLE: SWR-S20-4 SEVERE WINDSTORM RATED DOOR (IMPACT) VERTICAL SECTIONS
PREPARED BY: BUILDING DROPS, INC.
398 E. DANIA BEACH BLVD., STE. 338
DANIA BEACH, FL 33004
PH: (954) 369-8278
FAX: (954) 744-4738
WEB: www.buildingdrops.com



REMARKS	BY	DATE

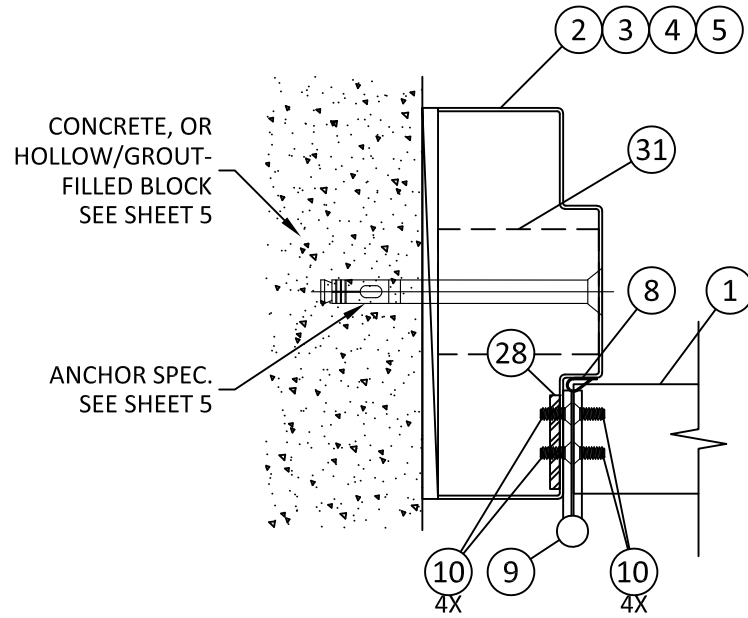
THE INSTALLATION DETAILS DESCRIBED HEREIN ARE GENERIC AND MAY NOT REFLECT ACTUAL CONDITIONS FOR A SPECIFIC SITE. IF SITE CONDITIONS CAUSE INSTALLATION TO DEVIATE FROM THE REQUIREMENTS DETAILED HEREIN, A LICENSED ENGINEER OR ARCHITECT SHALL PREPARE SITE SPECIFIC DOCUMENTS FOR USE WITH THIS DOCUMENT.



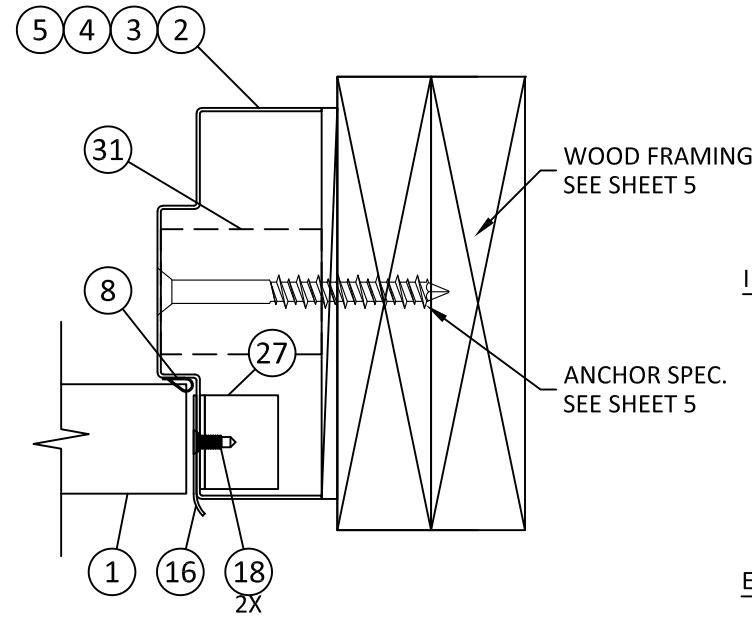
HERMES F. NORERO, P.E.
TEXAS P.E. No 118471
BUILDING DROPS, INC
398 E. DANIA BEACH BLVD. # 338
DANIA BEACH, FL 33004
TBPE FIRM No. 13734

DATE: 10.21.22
DWG. BY: MS
CHK. BY: HFN
SCALE: NTS
DWG. #: PRM002

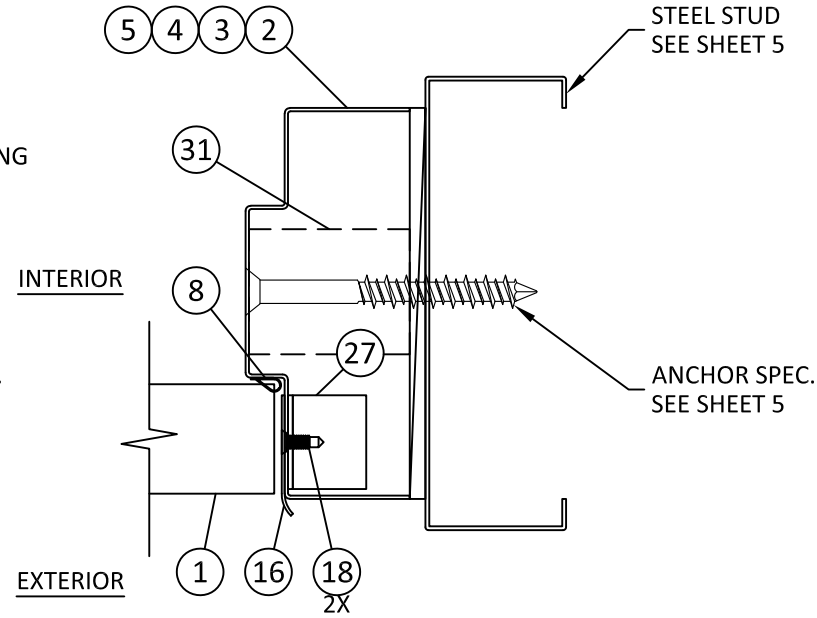
SHEET: 3 OF 6



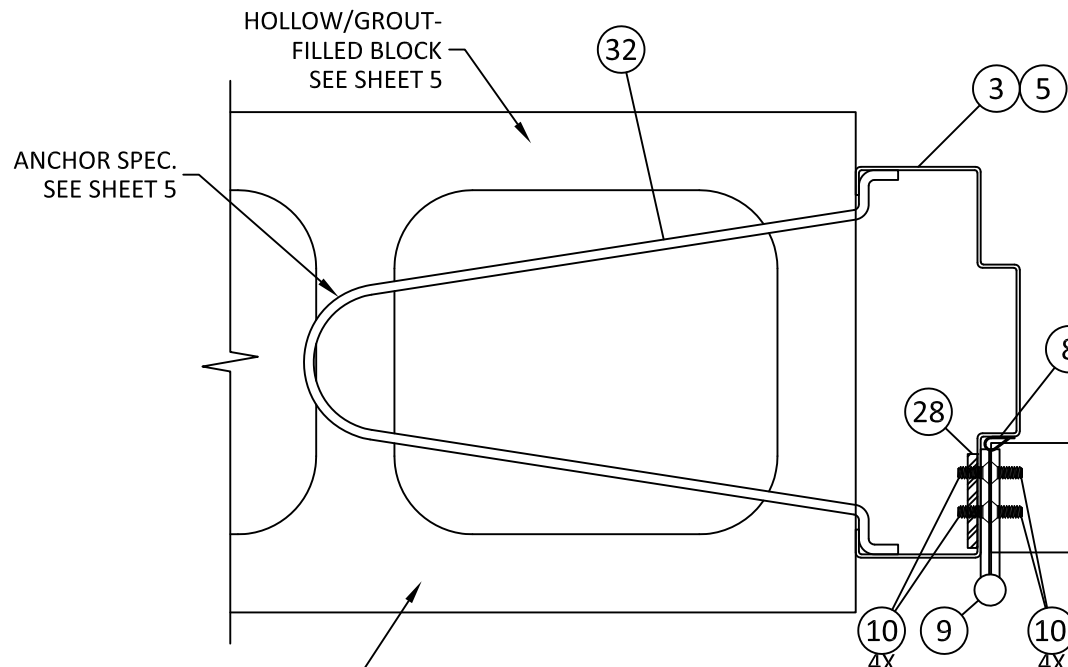
A
4 HORIZONTAL SECTION
CONCRETE/HOLLOW BLOCK JAMB ANCHOR



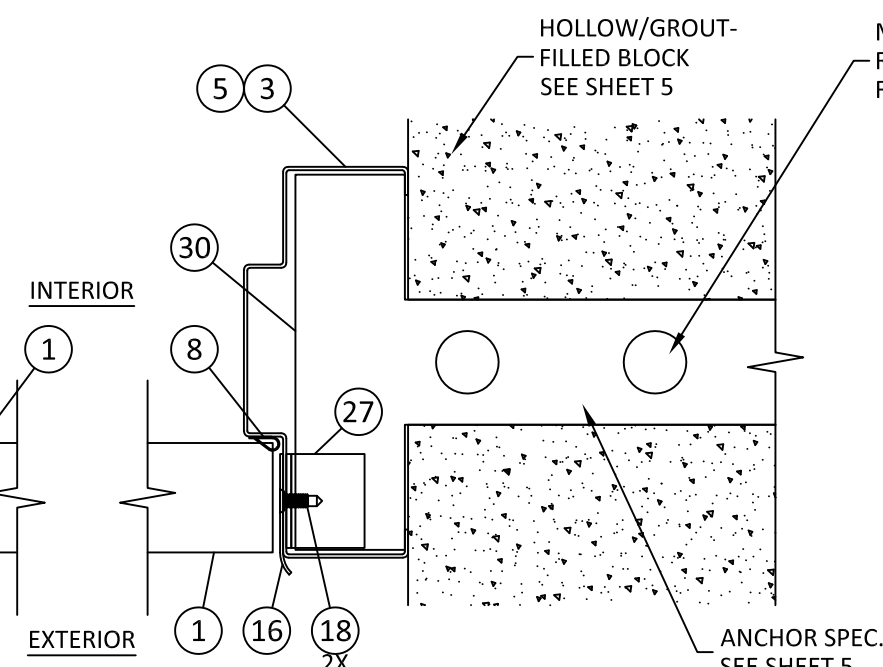
B
4 HORIZONTAL SECTION
WOOD ANCHOR



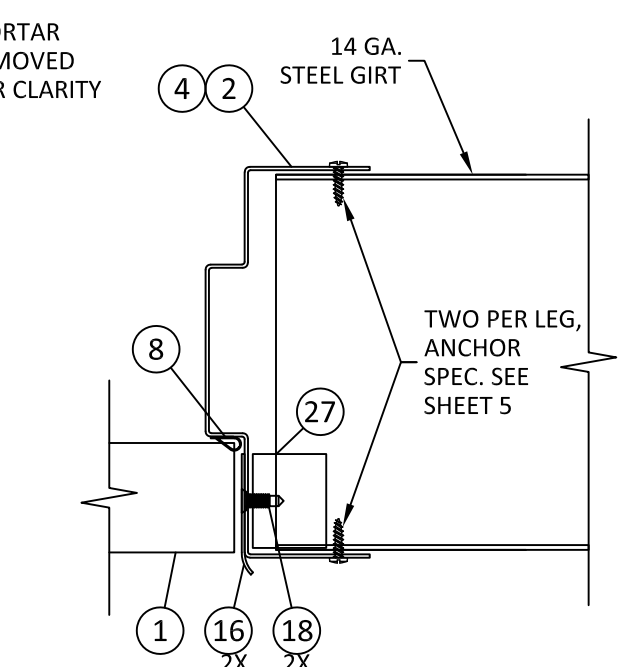
C
4 HORIZONTAL SECTION
STEEL ANCHOR



D
4 HORIZONTAL SECTION
WIRE ANCHOR



E
4 HORIZONTAL SECTION
"T" ANCHOR



F
4 HORIZONTAL SECTION
METAL BUILDING APPLICATION



2840 STERLINGTON ROAD
MONROE, LA 71203
PH: (318) 361-0796

TITLE: SWR-S20-4 SEVERE WINDSTORM RATED DOOR (IMPACT)
HORIZONTAL SECTIONS
PREPARED BY: BUILDING DROPS, INC.
398 E. DANIA BEACH BLVD., STE. 338
DANIA BEACH, FL 33004
PH: (954) 369-8278
FAX: (954) 744-4738
WEB: www.buildingdrops.com

REMARKS	BY	DATE

THE INSTALLATION DETAILS DESCRIBED HEREIN ARE GENERIC AND MAY NOT REFLECT ACTUAL CONDITIONS FOR A SPECIFIC SITE. IF SITE CONDITIONS CAUSE INSTALLATION TO DEVIATE FROM THE REQUIREMENTS DETAILED HEREIN, A LICENSED ENGINEER OR ARCHITECT SHALL PREPARE SITE SPECIFIC DOCUMENTS FOR USE WITH THIS DOCUMENT.

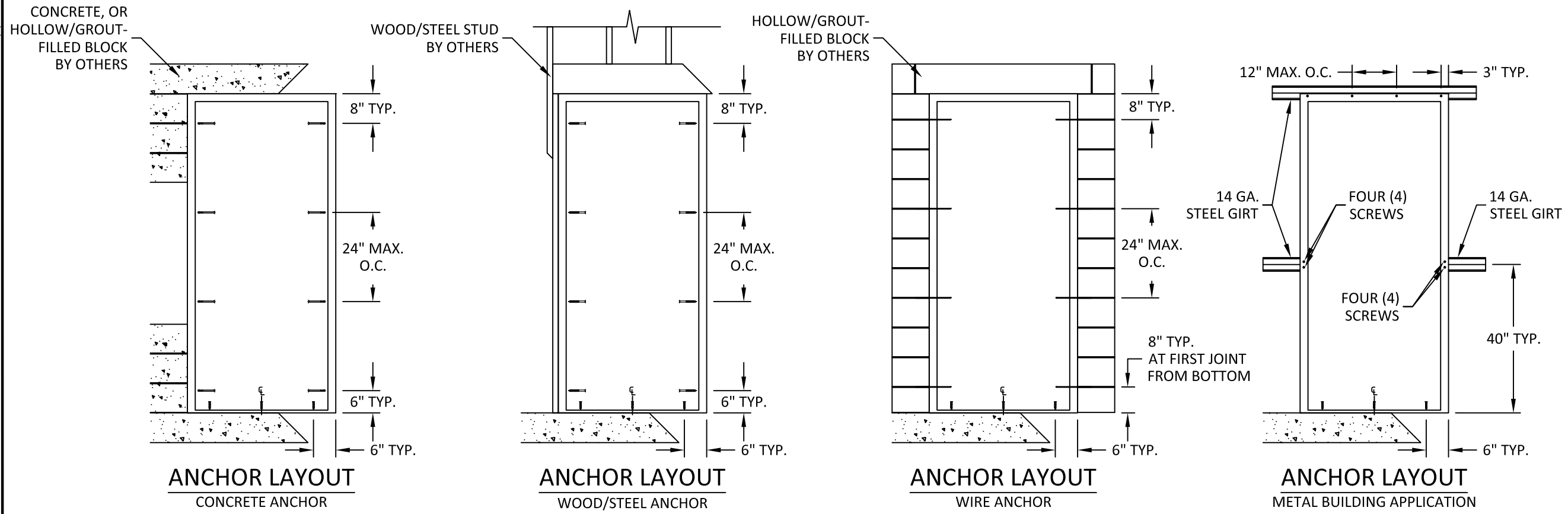


HERMES F. NORERO, P.E.
TEXAS P.E. No. 118471
BUILDING DROPS, INC
398 E. DANIA BEACH BLVD. # 338
DANIA BEACH, FL 33004
TBPE FIRM No. 13734

DATE:	10.21.22
DWG. BY:	MS
CHK. BY:	HFN
SCALE:	NTS
DWG. #:	PRM002

SHEET: 4 OF 6

s:\projects\premier steel doors & frames\tdi-22-0922 - tdi submittal - swr-s18-4 & swr-s20-4 severe windstorm rated doors\dwgs\prmo02.dwg 11/8/2022 8:44 PM



INSTALLATION NOTES:

1. ONE (1) INSTALLATION ANCHOR IS REQUIRED AT EACH ANCHOR LOCATION.
2. THE NUMBER OF INSTALLATION ANCHORS DEPICTED IS THE MINIMUM NUMBER OF ANCHORS TO BE USED FOR PRODUCT INSTALLATION OF THE MAXIMUM SIZE LISTED.
3. INSTALL INDIVIDUAL INSTALLATION ANCHORS WITHIN A TOLERANCE OF $\pm 1/4$ INCH THE DEPICTED LOCATION & SPACING IN THE ANCHOR LAYOUT DETAILS (I.E., WITHOUT CONSIDERATION OF TOLERANCES). TOLERANCES ARE NOT CUMULATIVE FROM ONE INSTALLATION ANCHOR TO THE NEXT.
4. SHIM AS REQUIRED AT EACH INSTALLATION ANCHOR WITH LOAD BEARING SHIM(S). MAXIMUM ALLOWABLE SHIM STACK TO BE 1/4 INCH. SHIM WHERE SPACE OF 1/16 INCH OR GREATER OCCURS. SHIM(S) SHALL BE CONSTRUCTED OF HIGH DENSITY PLASTIC OR BETTER.
5. FOR MASONRY OR CONCRETE OPENINGS, A 1X WOOD BUCK MAY BE USED (OPTIONAL) AS LONG AS THE MINIMUM EMBEDMENT AND EDGE DISTANCE REQUIREMENTS ARE STILL MET WITHIN THE CORRESPONDING HOST SUBSTRATE. SEE GENERAL NOTE #3 ON SHEET 1 FOR MORE INFORMATION.
6. MINIMUM EMBEDMENT AND EDGE DISTANCE EXCLUDE WALL FINISHES, INCLUDING BUT NOT LIMITED TO STUCCO, FOAM, BRICK VENEER, AND SIDING.
7. INSTALLATION ANCHORS AND ASSOCIATED HARDWARE MUST BE MADE OF CORROSION RESISTANT MATERIAL OR HAVE A CORROSION RESISTANT COATING.
8. FOR HOLLOW BLOCK AND GROUT FILLED BLOCK, DO NOT INSTALL INSTALLATION ANCHORS INTO MORTAR JOINTS. EDGE DISTANCE IS MEASURED FROM FREE EDGE OF BLOCK OR EDGE OF MORTAR JOINT INTO FACE SHELL OF BLOCK.
9. INSTALLATION ANCHORS SHALL BE INSTALLED IN ACCORDANCE WITH ANCHOR MANUFACTURER'S INSTALLATION INSTRUCTIONS, AND ANCHORS SHALL NOT BE USED IN SUBSTRATES WITH STRENGTHS LESS THAN THE MINIMUM STRENGTH SPECIFIED BY THE ANCHOR MANUFACTURER.

ANCHOR SCHEDULE				
METHOD	SUBSTRATE	ANCHOR TYPE	MIN. EMBEDMENT	MIN. EDGE DISTANCE
THROUGH JAMB FRAME	WOOD: MIN. S.G. = 0.42	3/8" LAG SCREW	1-1/2"	1"
	STEEL MIN. 18 GA. (MIN. Fy = 36 ksi)	3/8" SMS	3 THREADS MIN PENETRATION BEYOND METAL	3/4"
	CONCRETE: MIN. f'c = 3000 psi OR, HOLLOW/ GROUT-FILLED BLOCK per ASTM C90	3/8" DYNABOLT SLEEVE ANCHOR	1-1/2"	2-1/4"
		3/8" ITW LDT	1-1/2"	3"
	HOLLOW/ GROUT-FILLED BLOCK per ASTM C90	WIRE ANCHOR	8-13/16"	1-11/16"
		"T" ANCHOR	11-15/16"	3-1/16"
THROUGH SILL	CONCRETE: MIN. f'c = 3000 psi	1/4" ITW TAPCON	1"	1-1/2"
		1/4" DEWALT ULTRACON+	1"	2-1/2"
METAL BUILDING APPLICATION	14 GA. STEEL GIRT	#12 SELF-DRILLING	3 THREADS MIN PENETRATION BEYOND METAL	0.5"



2840 STERLINGTON ROAD
MONROE, LA 71203
PH: (318) 361-0796

TITLE: SWR-S20-4 SEVERE WINDSTORM RATED DOOR (IMPACT) ANCHOR LAYOUT & INSTALLATION NOTES

PREPARED BY: BUILDING DROPS, INC.
398 E. DANIA BEACH BLVD., STE. 338
DANIA BEACH, FL 33004
PH: (954) 369-8278
FAX: (954) 744-4738
WEB: www.buildingdrops.com

REMARKS	BY	DATE

THE INSTALLATION DETAILS DESCRIBED HEREIN ARE GENERIC AND MAY NOT REFLECT ACTUAL CONDITIONS FOR A SPECIFIC SITE. IF SITE CONDITIONS CAUSE INSTALLATION TO DEVIATE FROM THE REQUIREMENTS DETAILED HEREIN, A LICENSED ENGINEER OR ARCHITECT SHALL PREPARE SITE SPECIFIC DOCUMENTS FOR USE WITH THIS DOCUMENT.



HERMES F. NORERO, P.E.
TEXAS P.E. No. 118471
BUILDING DROPS, INC
398 E. DANIA BEACH BLVD. # 338
DANIA BEACH, FL 33004
TBPE FIRM No. 13734

DATE: 10.21.22

DWG. BY: MS **CHK. BY:** HFN

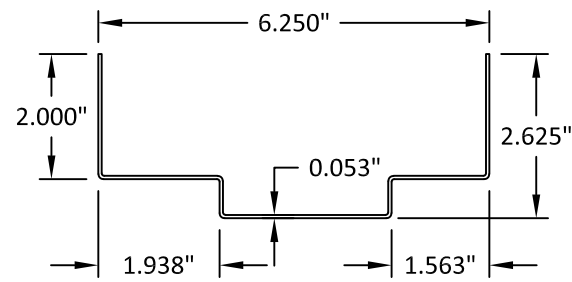
SCALE: NTS

DWG. #: PRM002

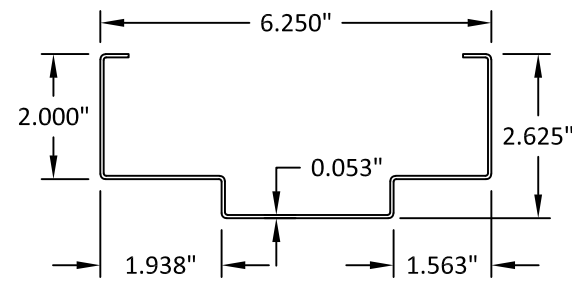
SHEET:

s:\projects\premier steel doors & frames\tdi-22-0922 - tdi submittal - swr-s18-4 & swr-s20-4 severe windstorm rated doors\dwgs\prmo02.dwg 11/18/2022 8:44 PM

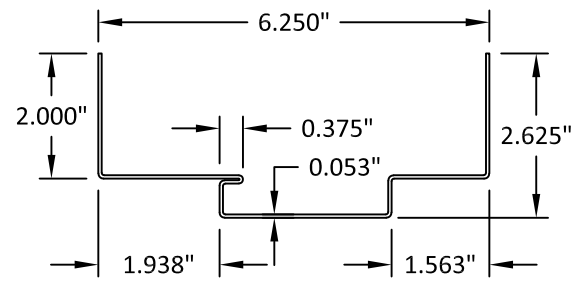
BILL OF MATERIALS		
ITEM#	DESCRIPTION	MATERIAL
1	STEEL DOOR PANEL	-
2	HOLLOW METAL FRAME (16 GA.)	STEEL
3	HOLLOW METAL FRAME - OPTIONAL (16 GA.)	STEEL
4	HOLLOW METAL FRAME - KERF (16 GA.)	STEEL
5	HOLLOW METAL FRAME - KERF OPTIONAL (16 GA.)	STEEL
7	DOOR SWEEP (PEMKO 315 BN)	ALUM./VINYL
8	WEATHER STRIP (PEMKO S88)	SILICONE
9	4-1/2" X 4-1/2" HINGE	STEEL
10	#12-24 X 1/2" PFH MACHINE SCREW	STEEL
14	LATCH STRIKE PLATE	STEEL
15	MORTISE STRIKE PLATE	STEEL
16	RIM PANIC DEVICE STRIKE PLATE	STEEL
18	#12 X 1" FH SCREW	STEEL
27	FRAME STRIKE REINFORCEMENT (14 GA.)	STEEL
28	FRAME HINGE REINFORCEMENT (9 GA.)	STEEL
30	"T" ANCHOR	STEEL
31	EXISTING WALL ANCHOR	STEEL
32	WIRE ANCHOR	STEEL
40	THRESHOLD (PEMKO 181 V)	ALUMINUM
41	THRESHOLD (PEMKO 2005 V)	ALUMINUM



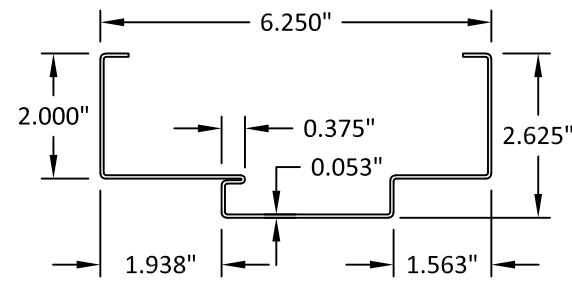
2 HOLLOW METAL FRAME



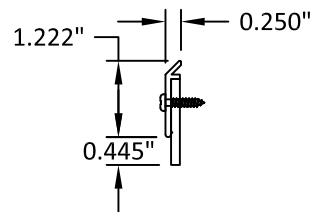
3 HOLLOW METAL FRAME OPTIONAL



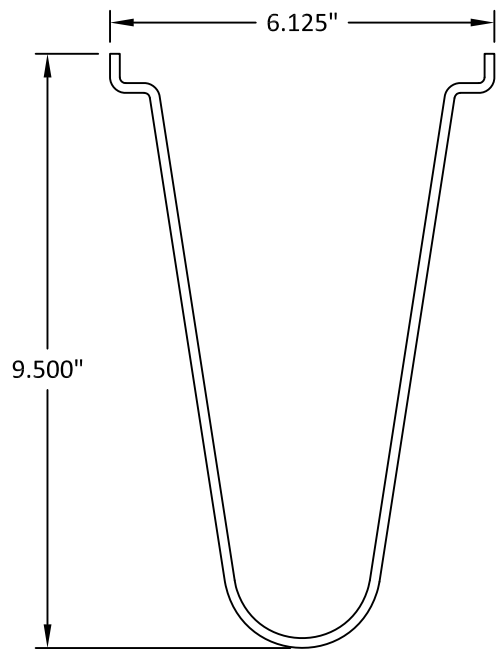
4 HOLLOW METAL FRAME KERF



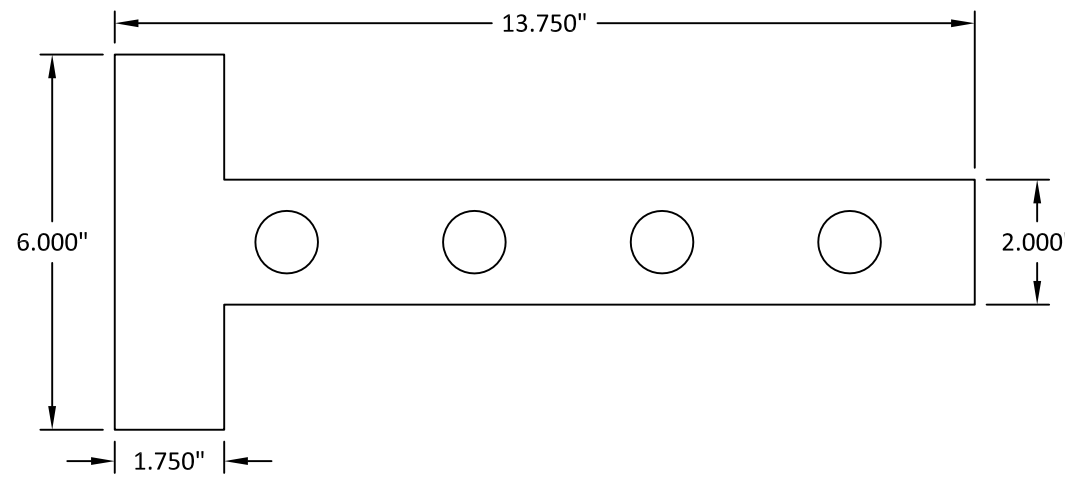
5 HOLLOW METAL FRAME KERF OPTIONAL



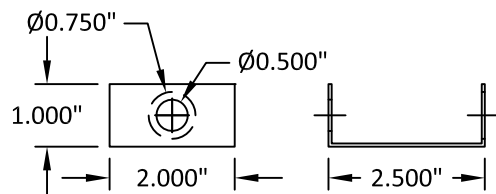
7 DOOR SWEEP



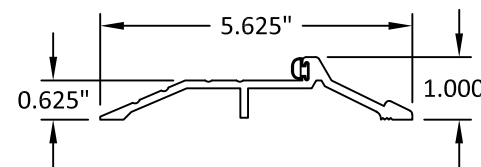
32 WIRE ANCHOR 9 GA. STEEL



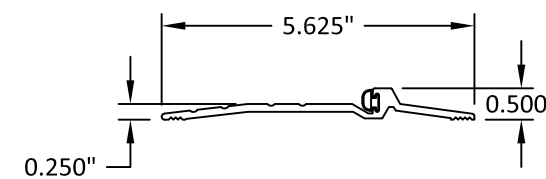
30 "T" ANCHOR 16 GA. STEEL



31 EXISTING WALL ANCHOR



40 THRESHOLD PRMKO 181 V



41 THRESHOLD PRMKO 2005 V



2840 STERLINGTON ROAD
MONROE, LA 71203
PH: (318) 361-0796

TITLE: SWR-S20-4 SEVERE WINDSTORM RATED DOOR (IMPACT)
COMPONENTS & BILL OF MATERIALS
PREPARED BY: BUILDING DROPS, INC.
398 E. DANIA BEACH BLVD., STE. 338
DANIA BEACH, FL 33004
PH: (954) 399-8278
FAX: (954) 744-4738
WEB: www.buildingdrops.com

REMARKS	BY	DATE

THE INSTALLATION DETAILS DESCRIBED HEREIN ARE GENERIC AND MAY NOT REFLECT ACTUAL CONDITIONS FOR A SPECIFIC SITE. IF SITE CONDITIONS CAUSE INSTALLATION TO DEVIATE FROM THE REQUIREMENTS DETAILED HEREIN, A LICENSED ENGINEER OR ARCHITECT SHALL PREPARE SITE SPECIFIC DOCUMENTS FOR USE WITH THIS DOCUMENT.



HERMES F. NORERO, P.E.
TEXAS P.E. No. 118471
BUILDING DROPS, INC
398 E. DANIA BEACH BLVD. # 338
DANIA BEACH, FL 33004
TBPE FIRM No. 13734

DATE: 10.21.22
DWG. BY: MS
CHK. BY: HFN
SCALE: NTS
DWG. #: PRM002

SHEET: 6 OF 6