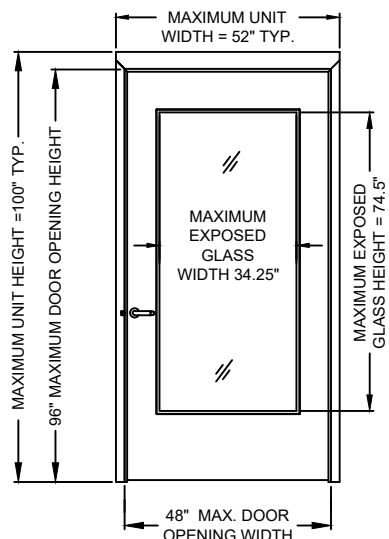


REVISIONS

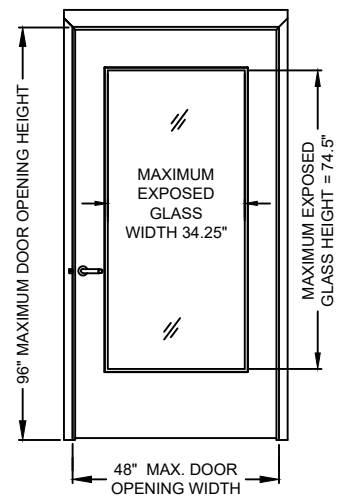
LTR	DESCRIPTION	DATE	APPROVED
A	APPROVAL DWG	JPD 02/14/17	
B	2018 IBC UPDATE	05/03/21	
C	LOCK UPDATE	CA 06/15/22	

MORTISE LOCKSET WITH OR WITHOUT DEADBOLT



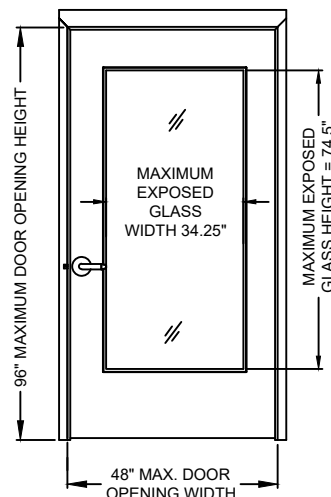
DESIGN PRESSURE RATING, PSF	
CONFIG. GS1	OUTSWING +50 / -40 INSWING +40 / -50

MORTISE LOCKSET WITH OR WITHOUT DEADBOLT WITH ELECTRIC STRIKE



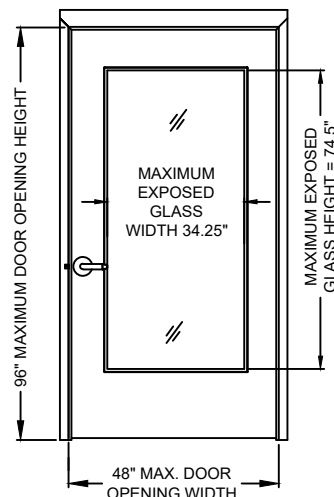
DESIGN PRESSURE RATING, PSF	
CONFIG. GS2	OUTSWING +50 / -40 INSWING +40 / -50

CYLINDRICAL LOCKSET 1/2\"/>



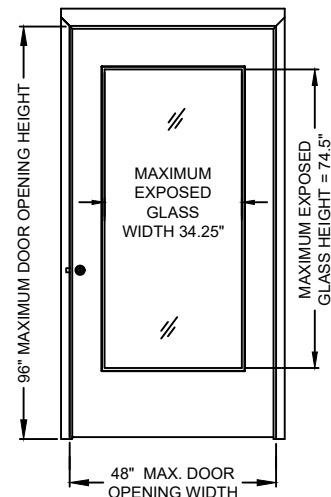
DESIGN PRESSURE RATING, PSF	
CONFIG. GS3	OUTSWING +50 / -40 INSWING +40 / -50

CYLINDRICAL LOCKSET 1/2\"/>



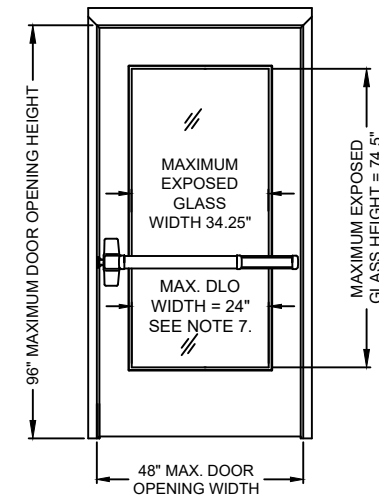
DESIGN PRESSURE RATING, PSF	
CONFIG. GS4	OUTSWING +50 / -40 INSWING +40 / -50

CYLINDRICAL OR MORTISE DEADBOLT



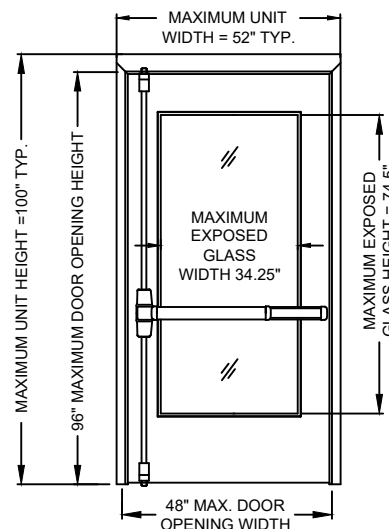
DESIGN PRESSURE RATING, PSF	
CONFIG. GS5	OUTSWING +50 / -40 INSWING +40 / -50

RIM EXIT DEVICE



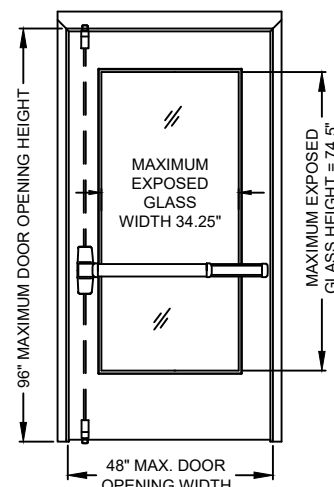
DESIGN PRESSURE RATING, PSF	
CONFIG. GS6	OUTSWING +50 / -40 INSWING +40 / -50

SURFACE VERTICAL ROD EXIT DEVICE



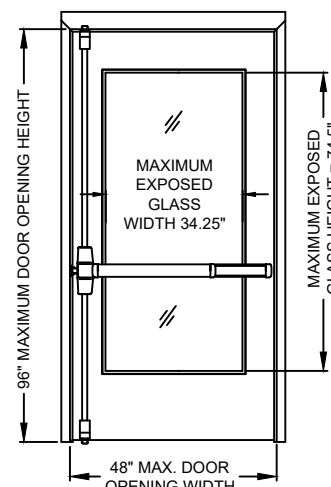
DESIGN PRESSURE RATING, PSF	
CONFIG. GS7	OUTSWING +50 / -40 INSWING +40 / -50

CONCEALED VERTICAL ROD EXIT DEVICE



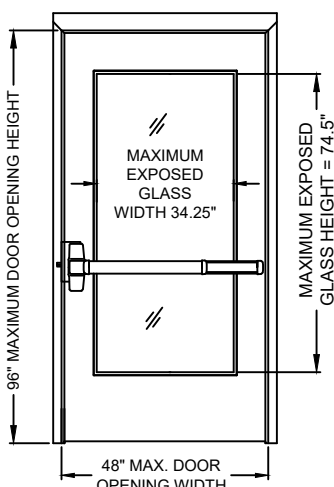
DESIGN PRESSURE RATING, PSF	
CONFIG. GS8	OUTSWING +50 / -40 INSWING +40 / -50

THREE-POINT LATCHING EXIT DEVICE



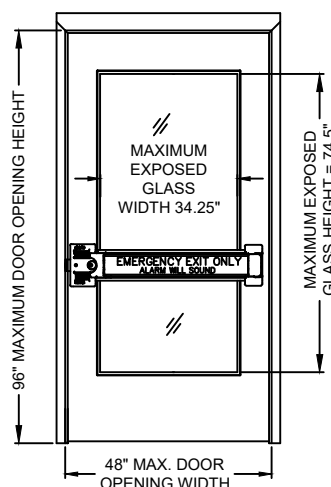
DESIGN PRESSURE RATING, PSF	
CONFIG. GS9	OUTSWING +50 / -40 INSWING +40 / -50

MORTISE EXIT DEVICE



DESIGN PRESSURE RATING, PSF	
CONFIG. GS10	OUTSWING +50 / -40 INSWING +40 / -50

EXIT ALARM LOCK



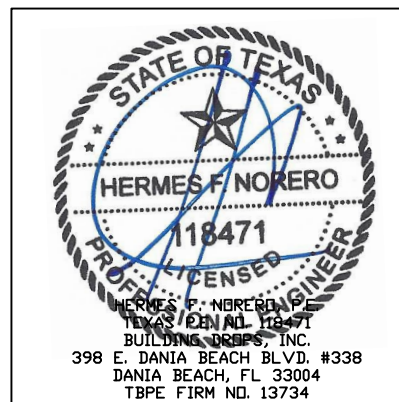
DESIGN PRESSURE RATING, PSF	
CONFIG. GS11	OUTSWING +50 / -40 INSWING +40 / -50

COMPLIANCE STATEMENT:

1. THESE PRODUCTS HAVE BEEN TESTED TO ASTM PROTOCOL E330-14 AND COMPLY WITH THE 2018 IBC & IRC.

NOTES:

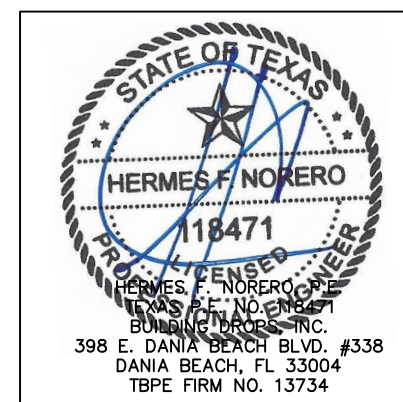
- INTERIOR VIEWS ARE SHOWN FOR ALL ELEVATIONS
- SEE TABLE 1 ON SHEET 2 AND TABLE 2 ON SHEET 3 FOR GLAZING SIZE, HARDWARE OPTIONS, APPLICATIONS AND LIMITATIONS
- SEE SHEET 4 AND 10 FOR HINGE REQUIREMENTS AND OPTIONS
- SEE SHEET 5 FOR ANCHORING TYPES AND INSTALLATION REQUIREMENTS
- SEE SHEETS 4 & 5 FOR SILL INSTALLATION INFORMATION
- SEE SHEET 6 FOR WEATHERSTRIPPING INSTALLATION DETAILS
- SEE SHEETS 4 & 9 FOR GLAZING OPTIONS AND DETAILS



BEND RADIUS		SCHLAGE LOCK COMPANY, LLC 11819 N. PENNSYLVANIA STREET CARMEL, IN 46032	
THIRD ANGLE PROJECTION		TITLE: STEELCRAFT SINGLE OUTSWING OR INSWING GLAZED COMMERCIAL STEEL DOORS WITH AND WITHOUT PANIC EXIT DEVICES	
DRAWN JPD	DATE 02/14/17	OUTSWING OR INSWING GLAZED SINGLE DOOR AND HARDWARE CONFIGURATIONS - NON IMPACT	
CHECKED		SIZE	REV
APPROVED		FLAT	DWG NO.
ENG. APPVL X	x	GSDA330	C 6-15-22
SCALE: NTS		AUTOCAD	SHEET 1 of 10

Door Configuration	Maximum Design Pressure, PSF		Maximum Door Opening Size, in.		Maximum Exposed Glass Size		TABLE 1 Locking Hardware Description				Comments
	Outswing	Inswing	Width	Height	Width	Height	Hardware Family	Model/Series	Strike Models	Brand	
GS1	+50 / -40	+40 / -50	48	96	34.25	74.5	Mortise Lock	L/LV9000 AD-MS / CO-MS	Standard	Schlage	Functions without deadbolt, 3/4" min. throw latch
								L/LV9400 AD-MD / CO-MD			Functions with 1" deadbolt, 3/4" min. throw latch
								LE-MS, LEB-MS, LE-MB, LEB-MB, LE-MD, LEB-MD			Function with or w/o deadbolt, 3/4" min. throw latch & 1" min. throw bolt
								MA			Function with or w/o deadbolt, 3/4" min. throw latch & 1" min. throw bolt
GS2	+50 / -40	+40 / -50	48	96	34.25	74.5	Mortise Lock	L/LV9000 AD-MS / CO-MS	Von Duprin Electric Strike Models: 6210, 6211, 6212, 6213, 6214, 6215, 6216	Schlage	Functions without deadbolt, 3/4" min. throw latch
								L/LV9400 AD-MD / CO-MD			Functions with 1" deadbolt, 3/4" min. throw latch
								LE-MS, LEB-MS, LE-MB, LEB-MB, LE-MD, LEB-MD			Function with or w/o deadbolt, 3/4" min. throw latch & 1" min. throw bolt
								MA			Function with or w/o deadbolt, 3/4" min. throw latch & 1" min. throw bolt
GS3	+50 / -40	+40 / -50	48	96	34.25	74.5	Cylindrical Lock	ND/NDE/NDEB/A/AL/S	Standard	Schlage	1/2" min. throw latch
								AD-CY / CO-CY			1/2" min. throw latch
								ALX			1/2" min. throw latch (13-247, 14-028, 14-042)
								B/X			1/2" min. throw latch
								T, TA		Falcon	1/2" min. throw latch (23981145)
GS4	+50 / -40	+40 / -50	48	96	34.25	74.5	Cylindrical Lock	ND/NDE/NDEB/A/AL/S	Von Duprin Electric Strike Models: 6211, 6212, 6213, 6214, 6215, 6216	Schlage	1/2" min. throw latch
								AD-CY / CO-CY			1/2" min. throw latch
								ALX			1/2" min. throw latch (13-247, 14-028, 14-042)
								B/X			1/2" min. throw latch
								T, TA		Falcon	1/2" min. throw latch (23981145)
GS5	+50 / -40	+40 / -50	48	96	34.25	74.5	Mortise Deadbolt	L400	Standard	Schlage	1" throw bolt
							Cylindrical Deadbolt	B600/B700/B800			1" throw bolt
GS6	+50 / -40	+40 / -50	48	96	34.25	74.5	Rim Exit Device	22 & 22-F	Von Duprin		
								98/99 & 98/99-F			299/299-F
								33A/35A & 33A/35A-F			299/299-F
								55			299/299-F
								88 & 88-F			299/299-F, 268/468
								19-R & F-19-R			F570/F490

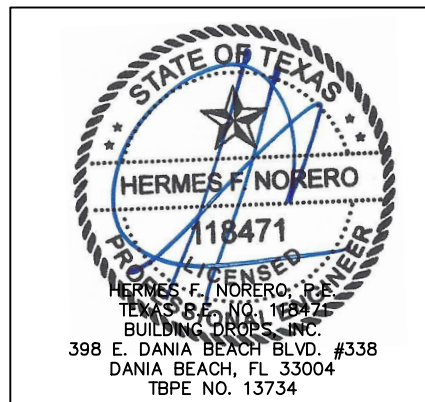
REVISIONS			
LTR	DESCRIPTION	DATE	APPROVED
A	APPROVAL DWG	JPD 02/14/17	
B	2018 IBC UPDATE	05/03/21	
C	LOCK UPDATE	CA 06/15/22	



BEND RADIUS		SCHLAGE LOCK COMPANY, LLC 11819 N. PENNSYLVANIA STREET CARMEL, IN 46250	
THIRD ANGLE PROJECTION		TITLE: STEELCRAFT SINGLE OUTSWING OR INSWING GLAZED COMMERCIAL STEEL DOORS WITH AND WITHOUT PANIC EXIT DEVICES	
DRAWN JPD	DATE 02/14/17	OUTSWING OR INSWING GLAZED SINGLE DOOR AND HARDWARE CONFIGURATIONS - NON IMPACT	
CHECKED		SIZE	FLAT
APPROVED		DWG NO.	GSDA330
ENG. APPVL X	x	SCALE:	NTS AUTOCAD
		REV	C 6-15-22
		SHEET	2 of 10

Door Configuration	Maximum Design Pressure, PSF		Maximum Door Opening Size, in.		Maximum DLO Size, in. (NOTE 3)		TABLE 2 Locking Hardware Description				Comments
	Outswing	Inswing	Width	Height	Width	Height	Hardware Family	Model/Series	Strike Models	Brand	
GS7	+50 / -40	+40 / -50	48	96	34.25	74.5	Surface Vertical Rod Exit Device	2227 & 2227-F	Top:299/299-F Bottom:304L	Von Duprin	Not approved for use on single fire rated doors
								33/3527A & 33/3527A-F	Top:299/299-F Bottom:304L		
								8827	Top:299/299-F Bottom:304L		
								98/9927 & 98/9927-F	Top:299/299-F Bottom:304L		
GS8	+50 / -40	+40 / -50	48	96	34.25	74.5	Concealed Vertical Rod Exit Device	33/3547A, 33/3547A-F & HH33/3547A	Top:338 Bottom:304L	Von Duprin	Not approved for use on single fire rated doors. HH33/3547 & HH98/9947 devices have a 2-3/4" backset
								98/9947, 98/9947-F & HH98/9947	Top:338 Bottom:304L		
								94/9547 & 94/9547-F	Top:338 Bottom:304L		
								5547	Top:471U Bottom:304L		
								XX-C & F-XX-C	Top:4188 Bottom:2130	Falcon	
GS9	+50 / -40	+40 / -50	48	96	34.25	74.5	Three-Point Latching Device	98/9957 & 98/9957-F	Top:299/299-F Middle:299/299-F Bottom:304L	Von Duprin	
GS10	+50 / -40	+40 / -50	48	96	34.25	74.5	Mortise Exit Device	98/9975 & 98/9975-F	575	Von Duprin	
								8875 & 8875-F	575		
								94/9575 & 94/9575-F	575		
								XX-M & F-XX-M	1279	Falcon	
GS11	+50 / -40	+40 / -50	48	96	34.25	74.5	Exit Alarm Lock	2670 Guard-X	267	Von Duprin	

REVISIONS			
LTR	DESCRIPTION	DATE	APPROVED
A	APPROVAL DWG	JPD 02/14/17	
B	2018 IBC UPDATE	05/03/21	
C	LOCK UPDATE	CA 06/15/22	



BEND RADIUS		SCHLAGE LOCK COMPANY, LLC 11819 N. PENNSYLVANIA STREET CARMEL, IN 46032	
 THIRD ANGLE PROJECTION		TITLE: STEELCRAFT SINGLE OUTSWING OR INSWING GLAZED COMMERCIAL STEEL DOORS WITH AND WITHOUT PANIC EXIT DEVICES	
DRAWN JPD	DATE 02/14/17	OUTSWING OR INSWING GLAZED SINGLE DOOR AND HARDWARE CONFIGURATIONS - NON IMPACT	
CHECKED		SIZE	FLAT
APPROVED		DWG NO.	REV
ENG. APPVL X	x	GSDA330	C 6-15-22
SCALE: NTS		AUTOCAD	SHEET 3 of 10

REVISIONS

LTR	DESCRIPTION	DATE	APPROVED
A	APPROVAL DWG JPD	02/14/17	
B	2018 IBC UPDATE	05/03/21	
C	LOCK UPDATE CA	06/15/22	

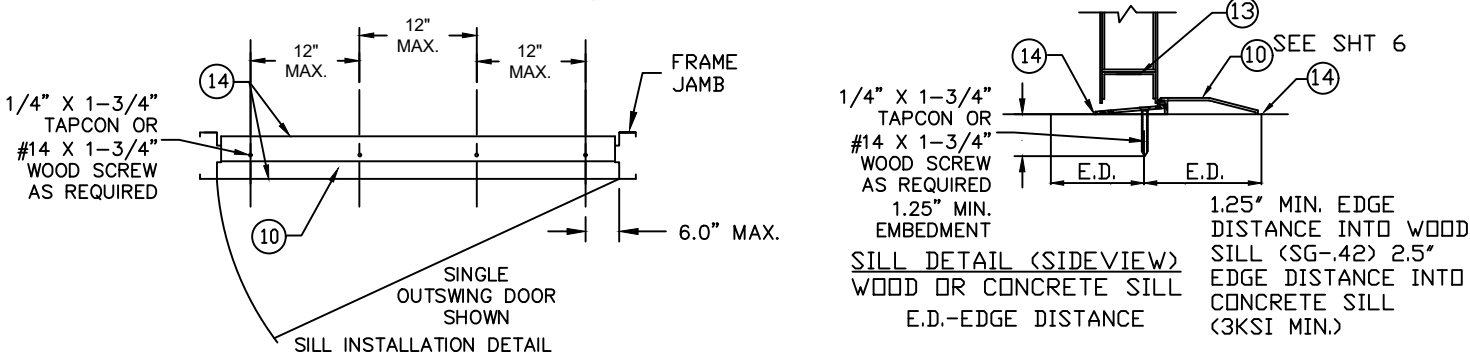
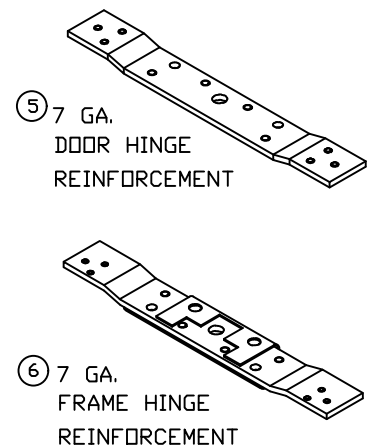
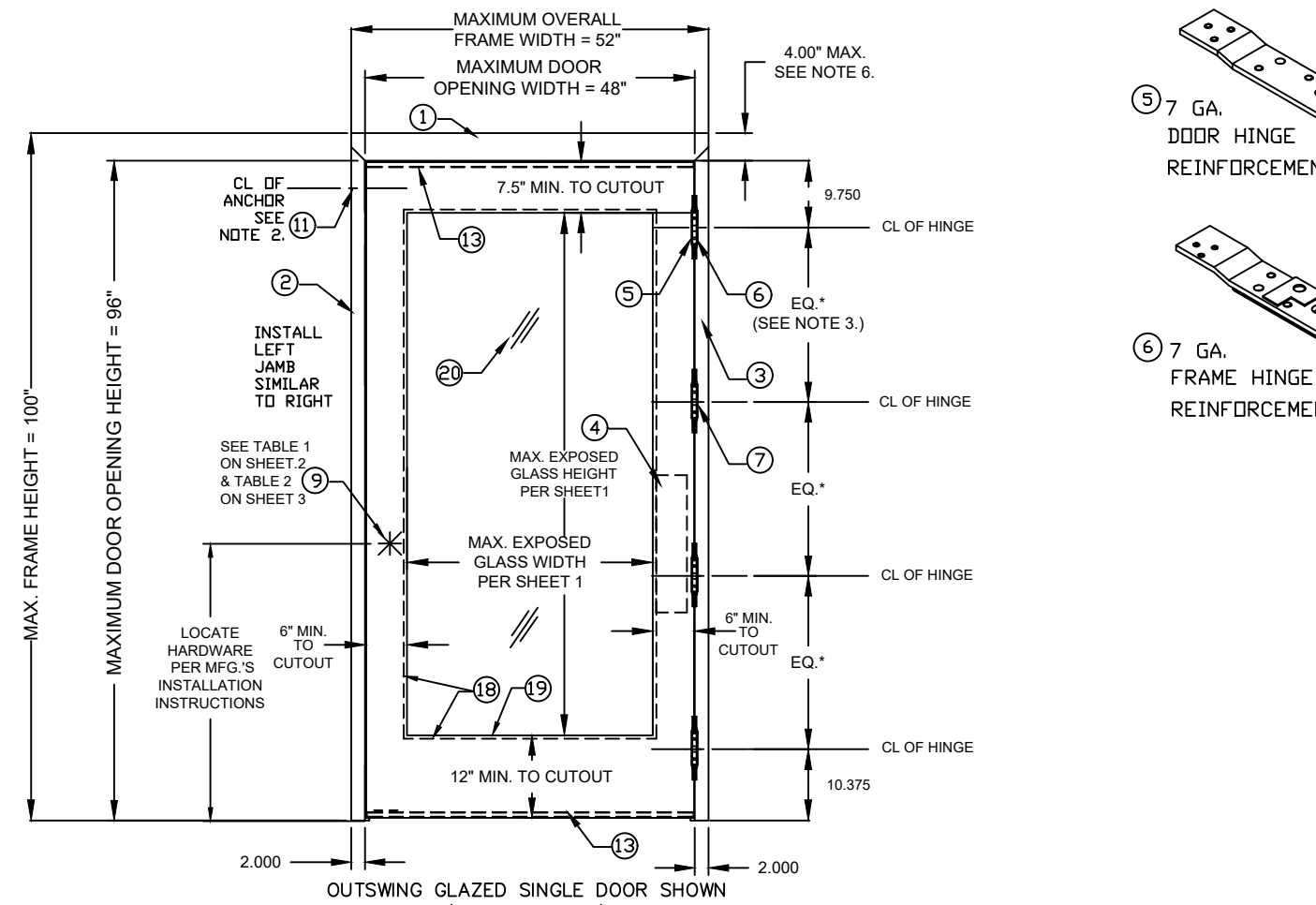
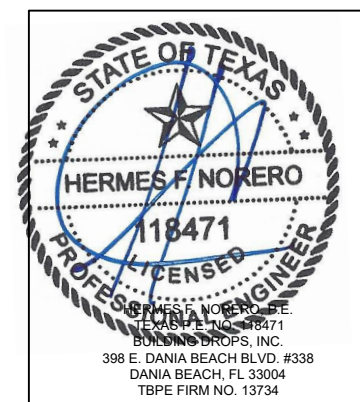


TABLE 3.

QUANTITY	DESCRIPTION	MATERIAL	SIZE
1	HEAD SEE SHT 7 ASTM A366	.053\" MIN. STL	MAX. 52"
2	STRIKE JAMB SEE SHT. 7 ASTM A366	.053\" MIN. STL	MAX. 100"
3	HINGE JAMB SEE SHT. 7 ASTM A366	.053\" MIN. STL	MAX. 100"
4	HINGE SIDE PANIC REINFORCEMENT	.067\" MIN. STL	MAX. 20"
5	NOTE 3. HINGE REINFORCEMENT DOOR ASTM A621	.167\" MIN. STL.	1.23\" X 9.19\" MIN.
6	NOTE 3. HINGE REINFORCEMENT FRAME ASTM A621	.167\" MIN. STL.	1.5\" X 9.19\" MIN.
7	NOTE 3. 4.5\" X 4.5\" BUTT HINGES SEE SHEET 10	.134\" MIN. STL.	(8) #12-24 MS PER HINGE
	OPTIONAL CONTINUOUS HINGE SEE SHEET 10	.075\" MIN. STL/110 ALUM	MAX. 95"
8	1 CORE MATERIAL (SHT. 9): D) HONEYCOMB C) STEEL STIFFENED A/F) POLYSTYRENE B/F) POLYURETHANE/POLYISOCYANURATE		
9	1 LOCKING HARDWARE - SEE TABLE 1 SHEET 2 & TABLE 2 SHEET 3		
10	1 THRESHOLD SILL WITH BUMPER GASKET SEE SHT. 6 1) ZERO INT'L 566 OR 65 2) NATIONAL GUARD 950 3) PEMKO 2005	.125\" ALUM. 6063 T5 .078\" ALUM. 6063 T5 .125\" ALUM. 6063 T5	5.0\"X0.5\"X48\"MAX.
11	NOTE 2. JAMB ANCHOR ASTM A924	SEE SHEET 5	
12	1 DOOR SLAB (18, 16 OR 14 GA)	SEE SHEET 8	4\" X 8\" MAX.
13	2 END CHANNEL ASTM A924 (14 GA - INVERTED)	.067\" MIN. STL.	.69\" X 1.66\" X 47.66\" MAX.
14	AS NEEDED CAULK-BUTYL RUBBER OR SILICONE		
15	1 STEELCRAFT FAS-SEAL DOOR SWEEP - OPTIONAL	TPE	47.66\" MAX.
16	1 ZERO INT'L SEAL A)8150S B)117S C)188S ZERO INT'L SEAL D)8145S E)8042S STEELCRAFT WEATHERSTRIPPING F)PSQ74	SILICONE SILICONE TPE	MAX. 21\" MAX. 21\" MAX. 21"
17	1 TOP CAP GALV. A60 ASTM A924 - OPTIONAL	.020\" MIN. STL	0.5\" X 1.76\" X 48\" MAX.
18	4 CUTOUT REINFORCEMENT CHANNEL	.042\" MIN. STL	78\" MAX.
19	VARIES GLASS LIGHT TRIM OPTIONS SEE SHEET 9 1) STEELCRAFT DEZIGNER TRIM 2) STEELCRAFT STEEL TRIM	.032\" MIN. STL	34.25\" X 74.5\" EXPOSED GLASS
20	VARIES GLAZING OPTIONS A) TEMPERED GLASS B) WIRED GLASS C) CERAMIC GLASS D) HEAT STRENGTHENED LAMINATED SAFETY GLASS	.25\" MIN. .188\" MIN. .563\" MIN.	34.25\" X 74.5\" EXPOSED GLASS

- NOTES:
 1. WEATHERSTRIPPING AND SILL - INSTALL PER SHT.6.
 2. ANCHOR REQUIREMENTS: SEE SHEET 5 FOR APPROVED ANCHOR INSTALLATION REQUIREMENTS.
 3. HINGE REQUIREMENTS:
 FOR DOOR OPENING UP TO 90\" HIGH - MIN. (3) BUTT HINGES
 FOR DOOR OPENING OVER 90\" - 96\" HIGH - MIN. (4) BUTT HINGES
 LOCATIONS: 9.75\" FROM RABBET IN HEAD TO CL OF TOP HINGE
 10.38\" FROM FLOOR TO CL OF BOTTOM HINGE, EQUALLY SPACED IN BETWEEN.
 HINGE LOCATION MAY VARY, MAX SPACING NOT TO EXCEED 35.5\"
 APPROVED CONTINUOUS HINGE MODELS SEE SHEET 10.
 4. SEE SHEETS 7 & 8 FOR AVAILABLE STANDARD OPENING SIZES AND SPECIFICATIONS.
 5. HARDWARE INSTALLATION AS PER MANUFACTURER'S INSTRUCTIONS.
 6. HEAD SECTION CAN HAVE 4\" FACE DIMENSIONS WHEN IT'S GROUTED WITH CONCRETE.
 7. EXIT HARDWARE OPTIONS:
 FOR 98/99, 94/95, 33A/35A, AND 22 SERIES - OPTIONS E, RX, LX, SS, EL, QEL, CX, F, ALK, CD, LD, PN
 TRIM: ALL APPLICABLE TRIMS AVAILABLE.
 FOR 88 AND 55 SERIES - OPTION E
 TRIM: ALL APPLICABLE TRIMS AVAILABLE.
 PN MODEL OFFERED.
 FOR FALCON 24 AND 25 SERIES - OPTIONS DM, LM, RX, KOR, MEL, EA, FSA, FSE, CD, LD
 FOR FALCON 19 AND XX SERIES
 TRIM: ALL APPLICABLE TRIMS AVAILABLE
 9. OPTIONAL POWER TRANSFERS, MONITORING SWITCHES, SUPPLEMENTARY MAGNETIC LOCKS AND ELECTRIFIED LOCKS MAY BE USED AS ALLOWED BY CODE AND IT DOES NOT EFFECT THE MECHANICAL PROPERTIES OF HARDWARE AND/OR INHIBIT EGRESS, TO BE REVIEWED BY BUILDING OFFICIAL.
 10. ELECTRIFIED AND FIRE RATED OPTIONS OF APPROVED HARDWARE ARE ACCEPTABLE. INSTALLATION AND APPLICATION IS UNDER SEPARATE APPROVAL AND IS REVIEWED BY THE CORRESPONDING AUTHORITY. FIRE RATING NOT PART OF THIS APPROVAL, CONSULT MANUFACTURER FOR APPROVED CONFIGURATIONS.



BEND RADIUS

THIRD ANGLE PROJECTION

DRAWN JPD DATE 02/14/17

CHECKED

APPROVED

ENG. APPVL X

SCHLAGE LOCK COMPANY, LLC
 11819 N. PENNSYLVANIA STREET
 CARMEL, IN 46032

TITLE: STEELCRAFT SINGLE OUTSWING OR INSWING GLAZED COMMERCIAL STEEL DOORS WITH AND WITHOUT PANIC EXIT DEVICES
 OUTSWING OR INSWING GLAZED SINGLE DOOR AND HARDWARE CONFIGURATIONS - NON IMPACT

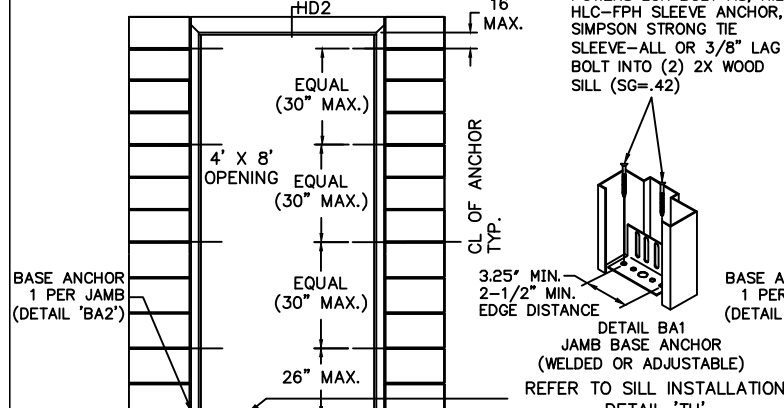
SIZE FLAT DWG NO. GSDA330 REV C 6-15-22

SCALE: NTS AUTOCAD SHEET 4 of 10

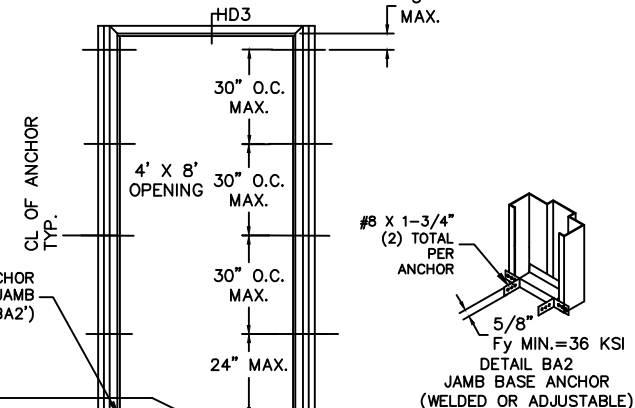
REVISIONS

LTR	DESCRIPTION	DATE	APPROVED
A	APPROVAL DWG	JPD 02/14/17	
B	2018 IBC UPDATE	05/03/21	
C	LOCK UPDATE	CA 06/15/22	

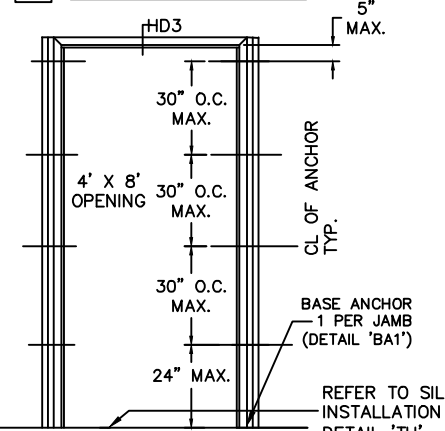
A WIRE OR T MASONRY ANCHOR INTO GROUT FILLED FRAME AND BLOCK WALL



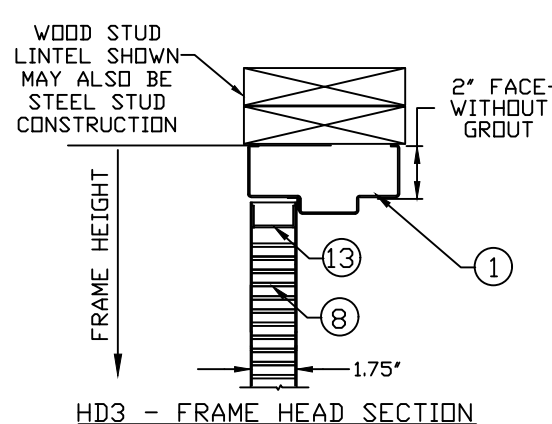
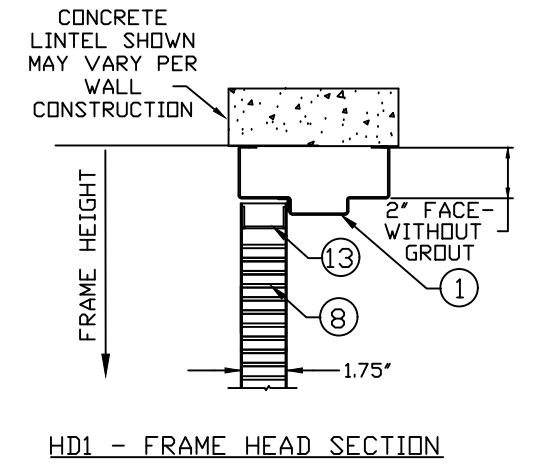
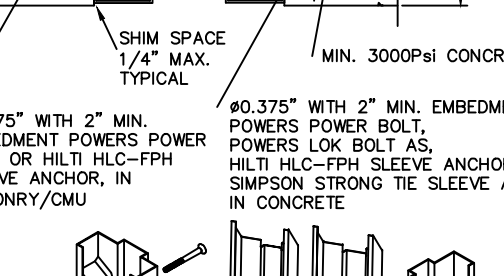
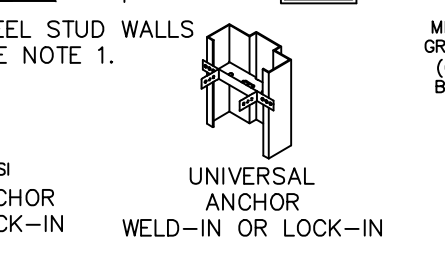
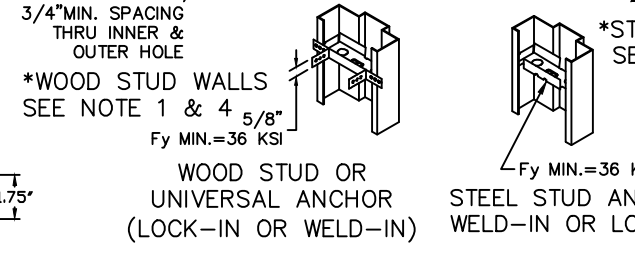
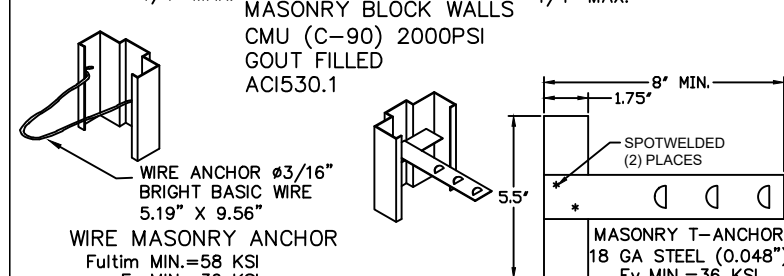
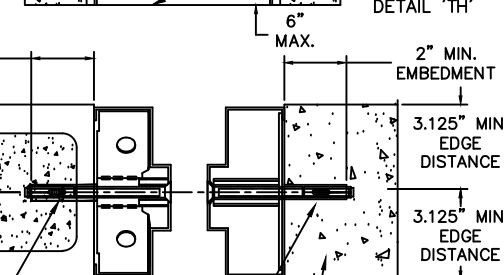
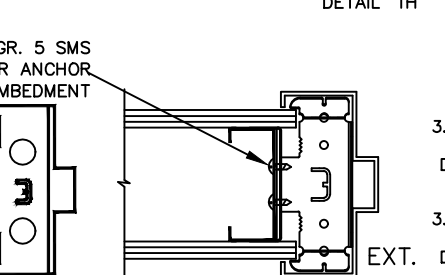
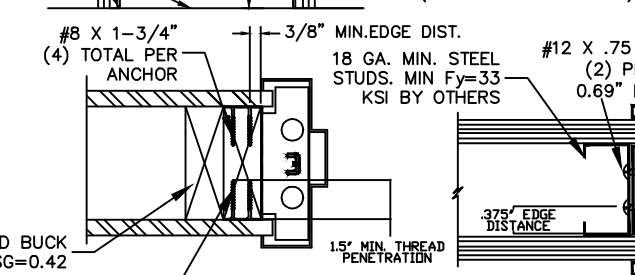
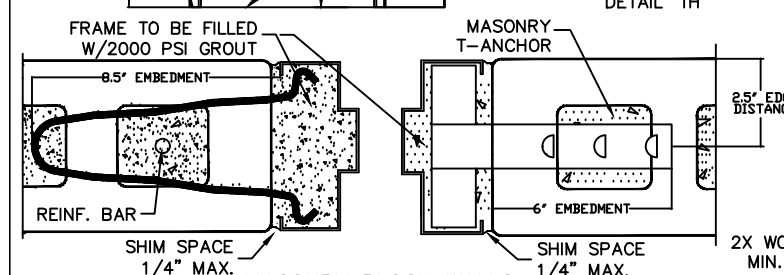
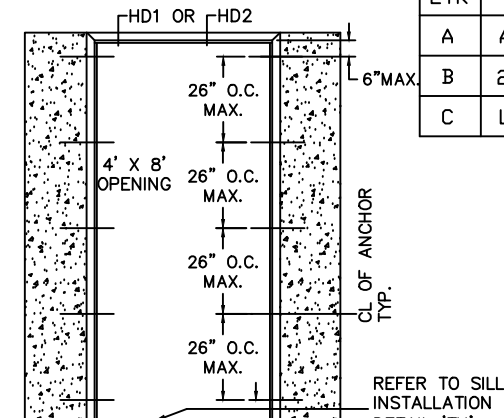
B WOOD STUD ANCHOR



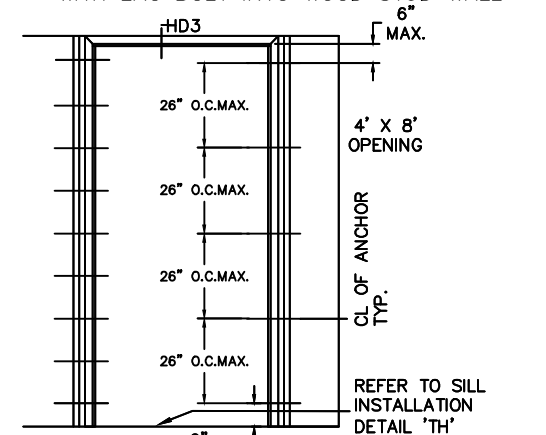
C STEEL STUD ANCHOR



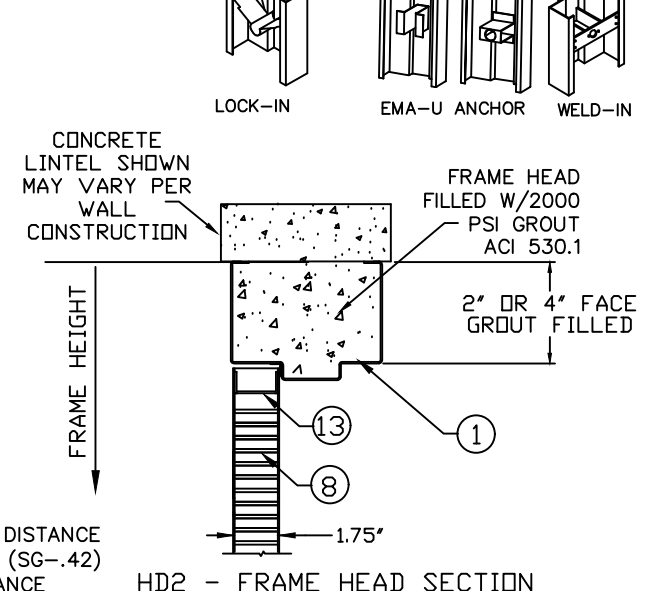
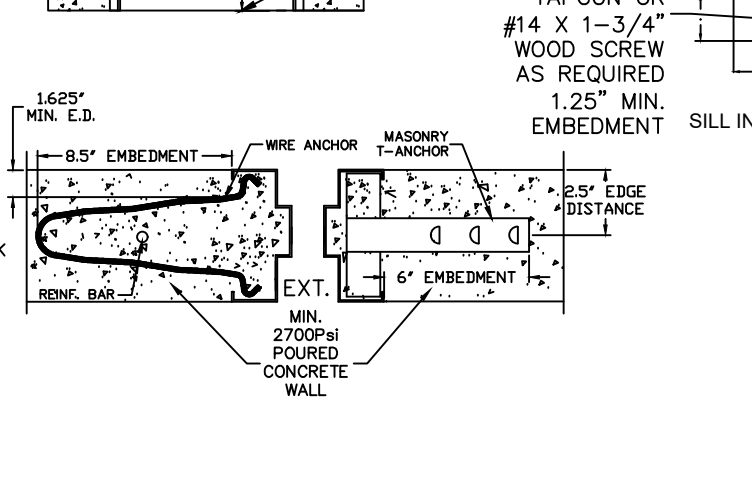
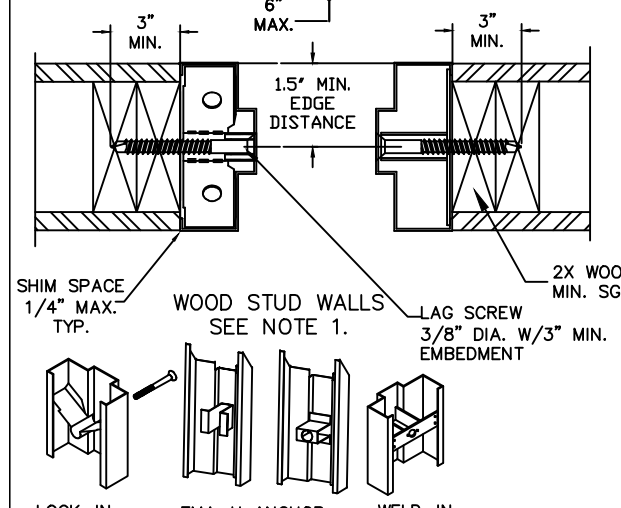
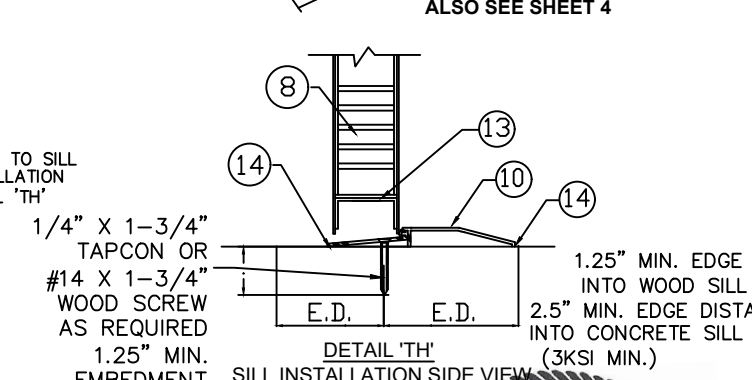
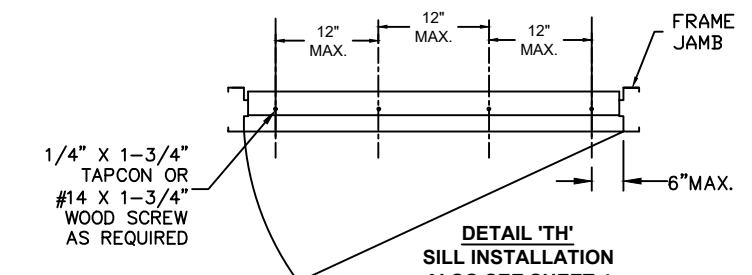
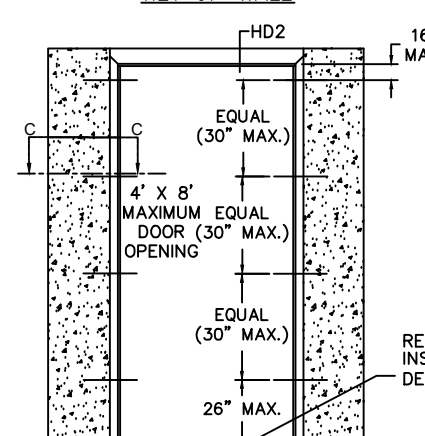
D EXISTING MASONRY ANCHOR (EMA) INTO CONCRETE WALL OR CMU



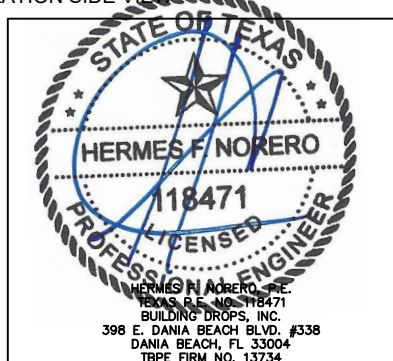
E EXISTING MASONRY ANCHOR (EMA) WITH LAG BOLT INTO WOOD STUD WALL



F POURED CONCRETE TILT UP WALL

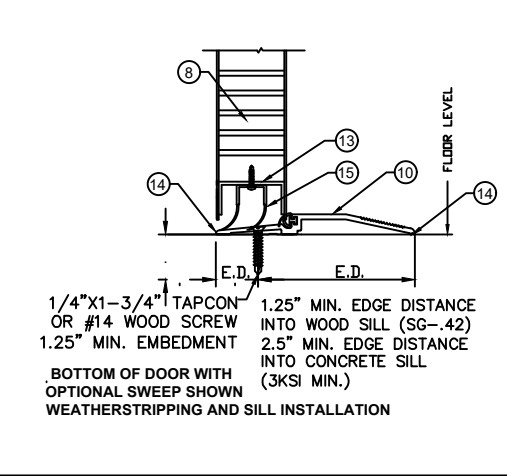
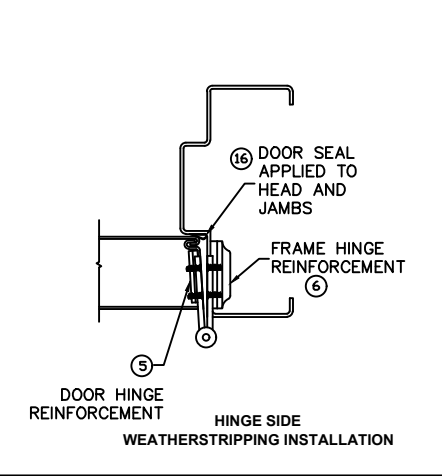
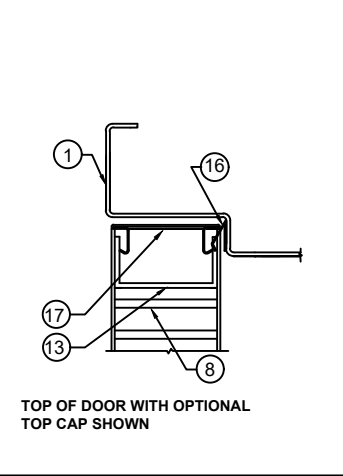
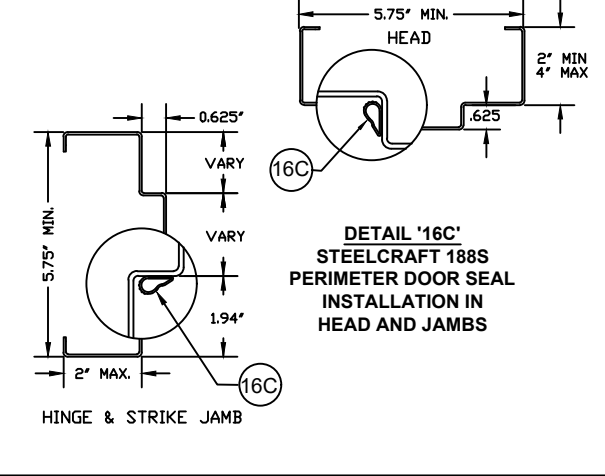
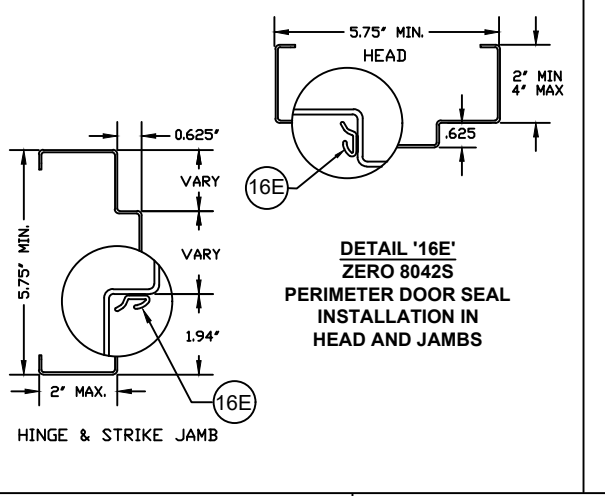
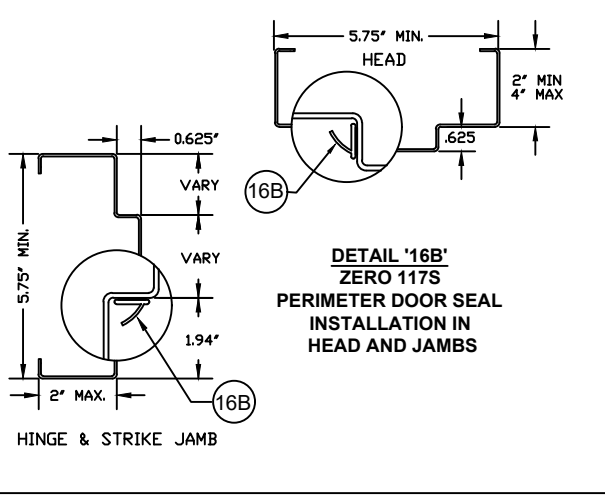
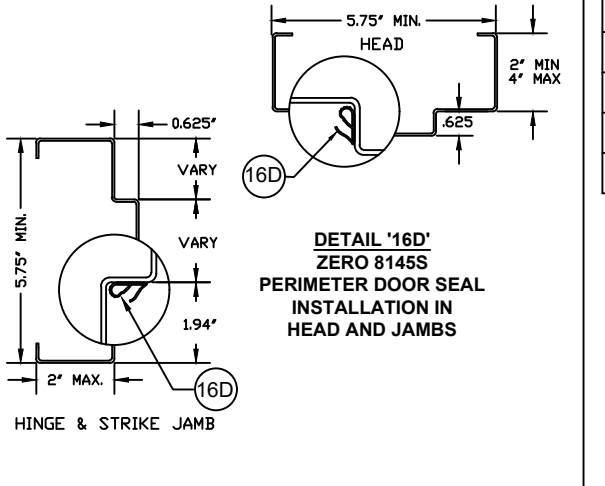
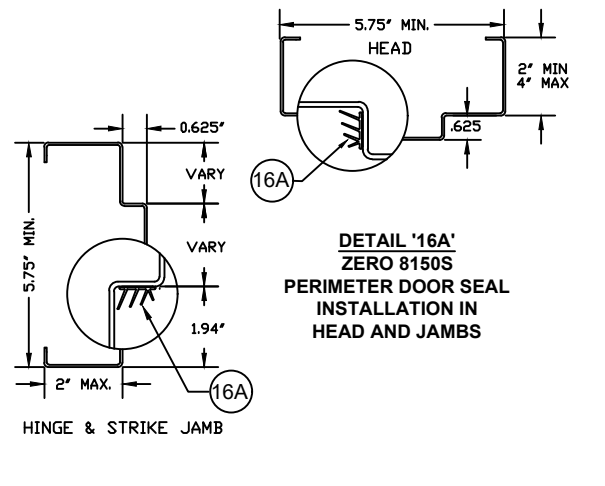
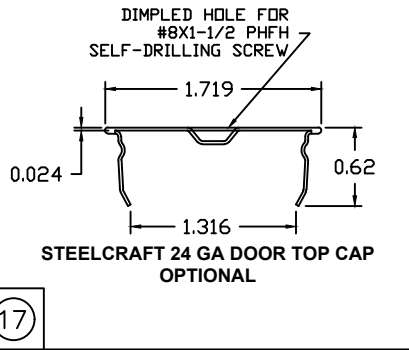
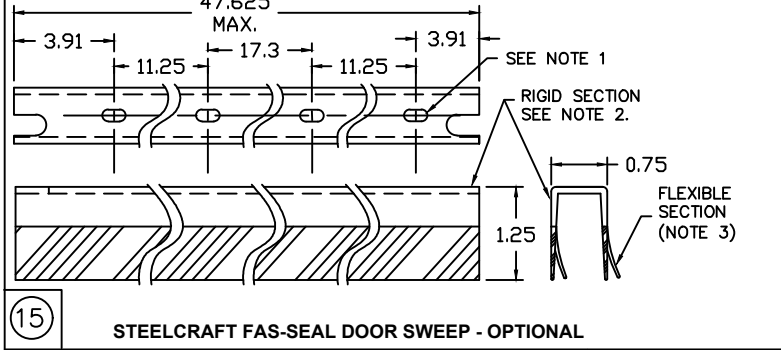
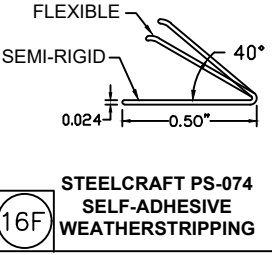
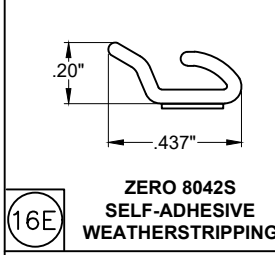
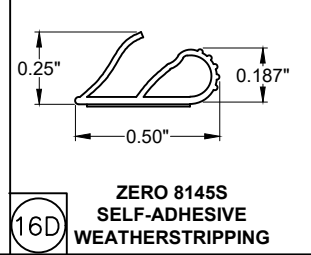
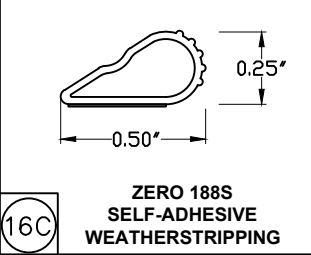
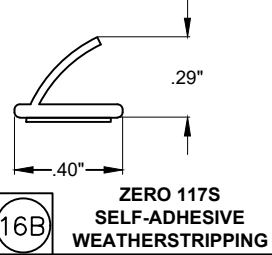
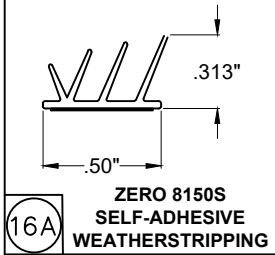
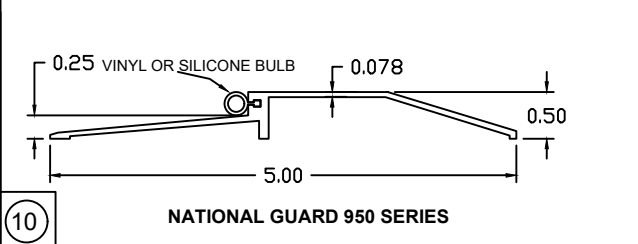
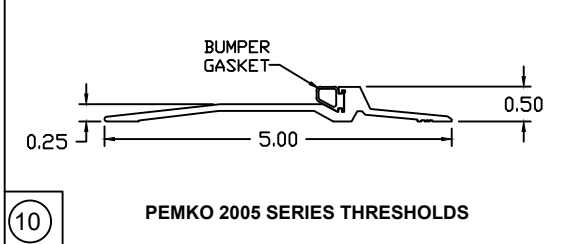
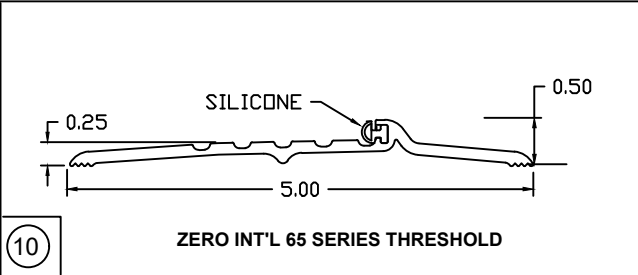
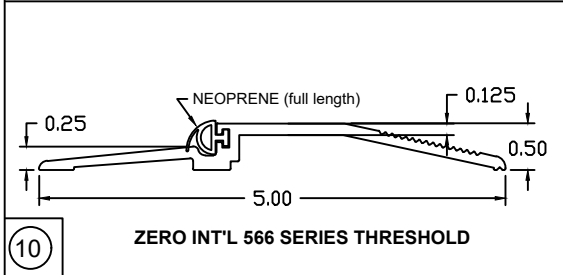


- NOTES:
- (*)WOOD OR (*)STEEL STRUCTURAL MEMBERS OF WOOD AND STEEL-STUD WALLS MUST BE DESIGNED TO CARRY SUFFICIENT LOAD.
 - NUMBER OF ANCHORS FOR VARIOUS OPENING HEIGHTS IS LIMITED BY MAXIMUM DISTANCE BETWEEN ANCHORS, SHOWN ON THIS SHEET.
 - FRAME/ANCHOR INSTALLATION SHALL CONFORM WITH THE STEELCRAFT INSTALLATION INSTRUCTIONS AND ANSI/SDIA250.11. THE MAXIMUM DISTANCE BETWEEN ANCHORS SHALL BE AS SHOWN ON THIS SHEET.
 - AN ADDITIONAL JAMB ANCHOR MAY BE USED INSTEAD OF A BASE ANCHOR FOR WOOD STUD INSTALLATIONS
 - APPLY CAULK TO FULL LENGTH OF SILL AND ENTIRE PERIMETER OF FRAME INTERIOR AND EXTERIOR.



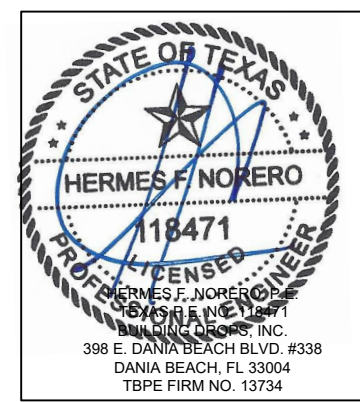
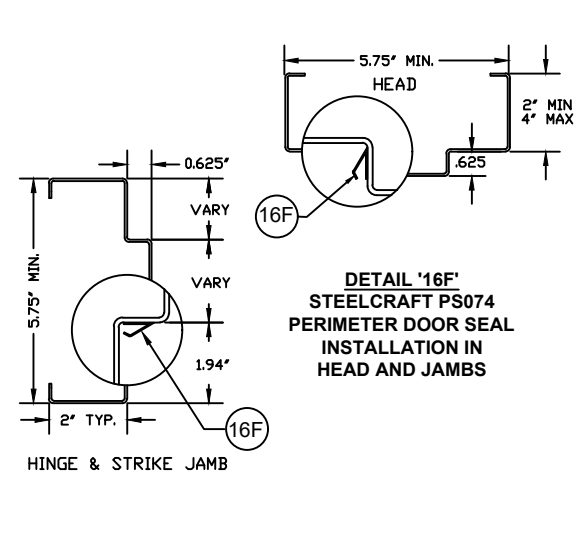
BEND RADIUS	SCHLAGE LOCK COMPANY, LLC 11819 N. PENNSYLVANIA STREET CARMEL, IN 46032		
THIRD ANGLE PROJECTION	TITLE: STEELCRAFT SINGLE OUTSWING OR INSWING GLAZED COMMERCIAL STEEL DOORS WITH AND WITHOUT PANIC EXIT DEVICES		
DRAWN JPD	DATE 02/14/17	FRAME ANCHOR DETAILS & INSTALLATION CONDITIONS.	
CHECKED		SIZE FLAT	DWG NO. GSDA330
APPROVED		REV C	6-15-22
ENG. APPVL X	x	SCALE NTS	AUTOCAD
			SHEET 5 of 10

PART DETAILS



REVISIONS				
LTR	DESCRIPTION	DATE	APPROVED	
A	APPROVAL DWG	JPD	02/14/17	
B	2018 IBC UPDATE		05/03/21	
C	LOCK UPDATE	CA	06/15/22	

- NOTES:**
1. SLOT LOCATIONS MAY VARY WITH DIFFERENT DOOR WIDTH.
 2. DOOR SWEEP RIGID SECTION IS MADE OF PRO-FAX #PD-199 POLYPROPYLENE HOMOPOLYMER.
 3. DOOR SWEEP FLEXIBLE SECTION IS MADE OF SANTOPRENE #101-73
 4. ALL APPLICATIONS REQUIRE THRESHOLD AND GASKETING.



BEND RADIUS		SCHLAGE LOCK COMPANY, LLC 11819 N. PENNSYLVANIA STREET CARMEL, IN 46032	
THIRD ANGLE PROJECTION		TITLE: STEELCRAFT SINGLE OUTSWING OR INSWING GLAZED COMMERCIAL STEEL DOORS WITH AND WITHOUT PANIC EXIT DEVICES	
DRAWN JPD	DATE 02/14/17	GLAZED SINGLE DOOR PERIMETER SEAL HARDWARE.	
CHECKED		SIZE FLAT	DWG NO. GSDA330
APPROVED		REV C	6-15-22
ENG. APPVL X	x	SCALE: NTS	AUTOCAD
		SHEET 6 of 10	

REVISIONS

LTR	DESCRIPTION	DATE	APPROVED
A	APPROVAL DWG	JPD 02/14/17	
B	2018 IBC UPDATE	05/03/21	
C	LOCK UPDATE	CA 06/15/22	

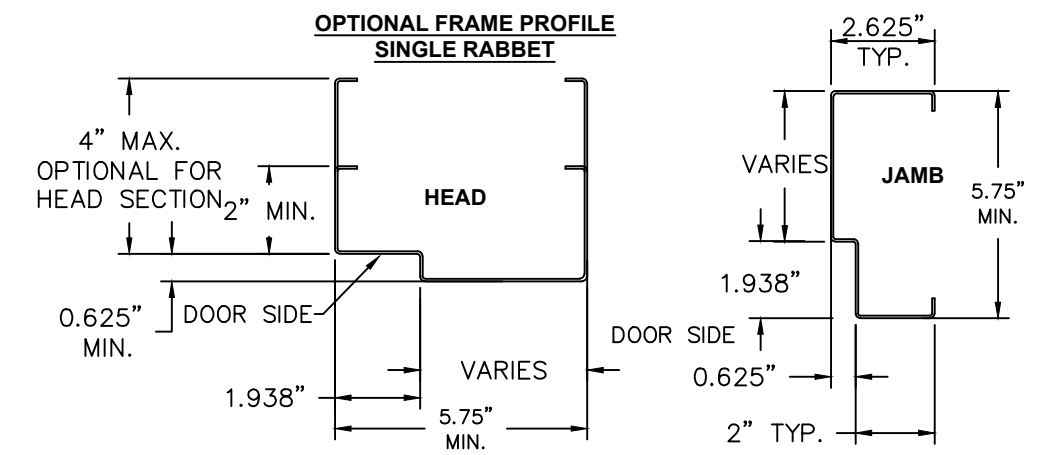
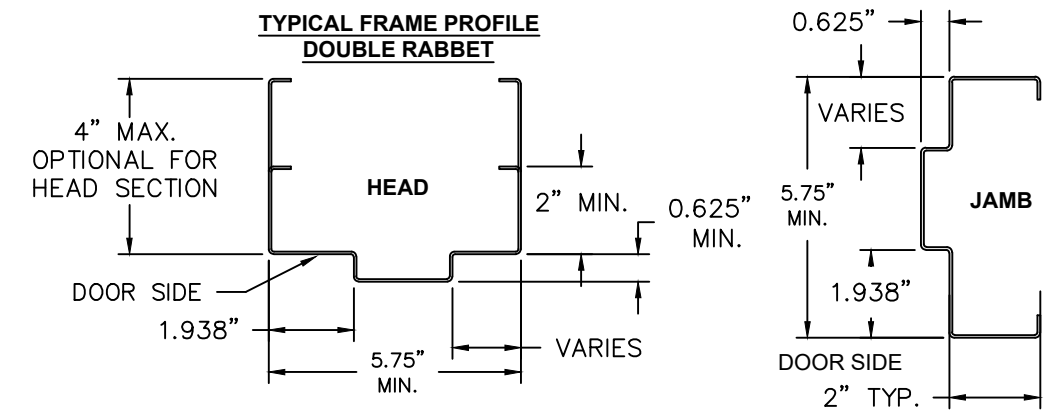
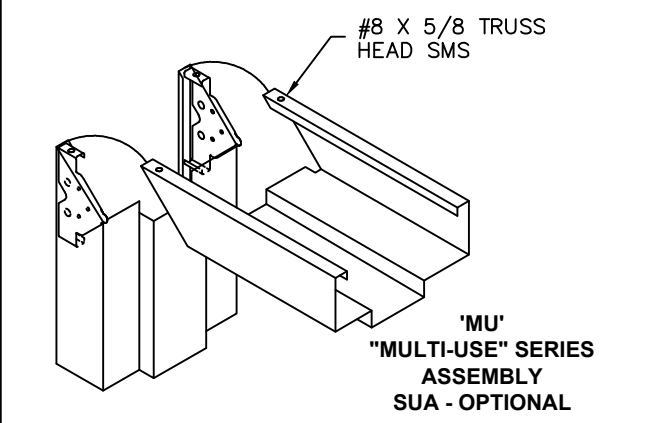
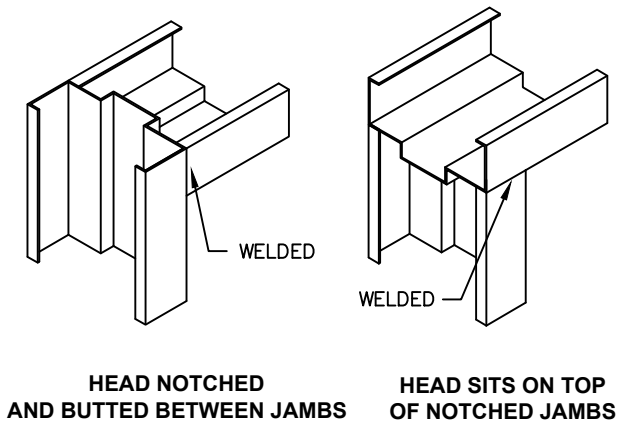
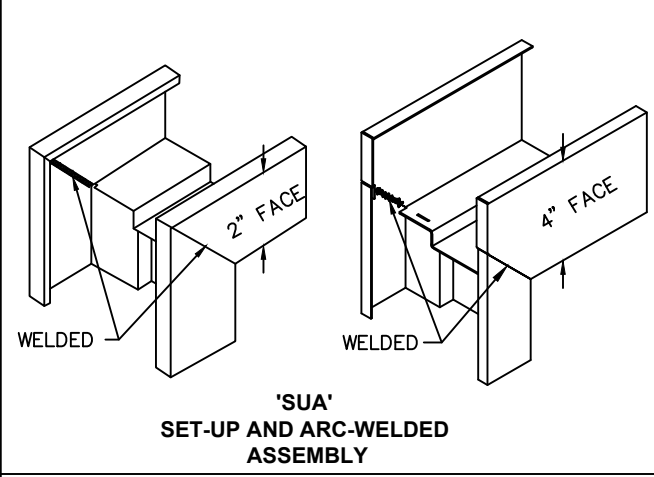
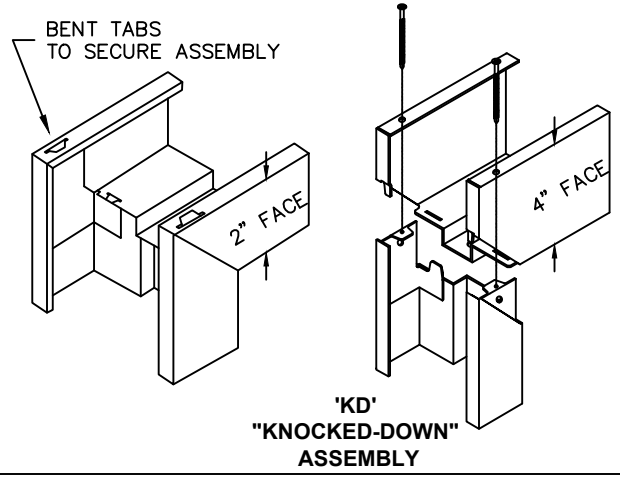


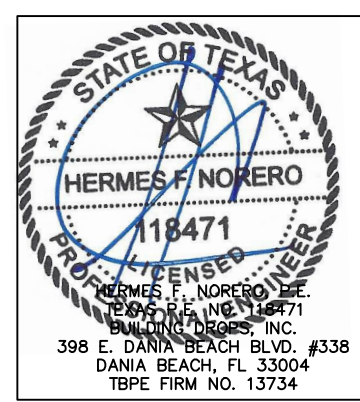
TABLE 4. AVAILABLE STEELCRAFT FRAME CONFIGURATIONS

STEELCRAFT FRAME SERIES	JAMB DEPTH	MAXIMUM OPENING SIZE		MATERIAL	
		WIDTH	HEIGHT	DESCR.	GA./MIN. THK
F	5.75" MIN.	4'0"	8'0"	CRS/HRS GALV	16/.053" 14/.067" 12/.099"
				STAINLESS STEEL	16/.053"
MU	5.75" MIN.	4'0"	8'0"	CRS/HRS GALV	16/.053" 14/.067"

- NOTES:**
 1. FRAME CONSTRUCTION
 1.1 MINIMUM JAMB DEPTH - 5-3/4", STOP HEIGHT - 5/8"
 1.2 FRAMES AVAILABLE AS FLUSH (F-SERIES) AND MULTI-USE (MU-SERIES) (SEE TABLE 4)
 2. FRAME MATERIAL SPECIFICATIONS REFERENCE SEE TABLE 5.

TABLE 5. STEEL DOOR/FRAME MECHANICAL PROPERTIES

MATERIAL	ASTM REF.	YIELD KSI	TENSILE KSI
CRS	A1008	MIN. 30.1	MIN. 44.7
HRS	A1011		
GALV: A60	A924	MIN. 31.2	MIN. 73.2
SS: 304,316	A240		



BEND RADIUS		SCHLAGE LOCK COMPANY, LLC 11819 N. PENNSYLVANIA STREET CARMEL, IN 46032	
THIRD ANGLE PROJECTION		TITLE STEELCRAFT SINGLE OUTSWING OR INSWING GLAZED COMMERCIAL STEEL DOORS WITH AND WITHOUT PANIC EXIT DEVICES	
DRAWN JPD	DATE 02/14/17	FRAME PROFILE, CORNER DETAILS AND DOOR FRAME MATERIAL, AND SIZE OPTIONS	
CHECKED		SIZE FLAT	REV GSDA330 C 6-15-22
APPROVED		DWG NO. GSDA330	SHEET 7 of 10
ENG. APPVL X	x	SCALE: NTS AUTOCAD	

REVISIONS

LTR	DESCRIPTION	DATE	APPROVED
A	APPROVAL DWG	JPD 02/14/17	
B	2018 IBC UPDATE	05/03/21	
C	LOCK UPDATE	CA 06/15/22	

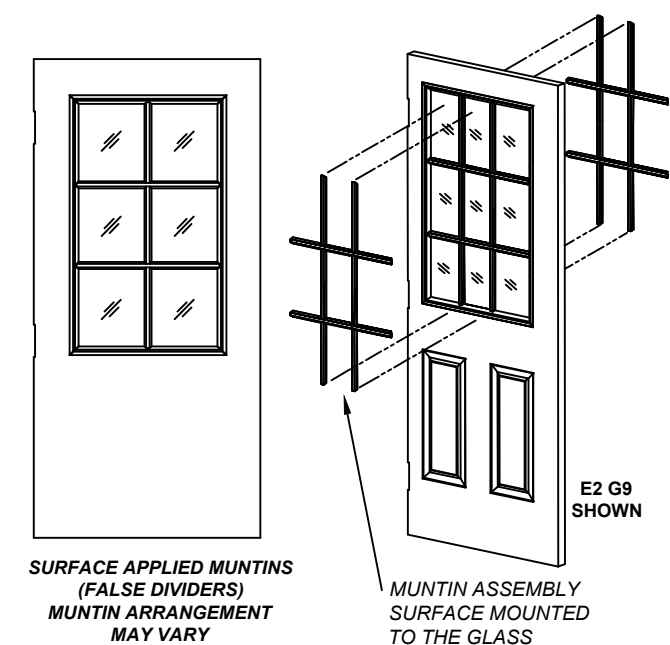
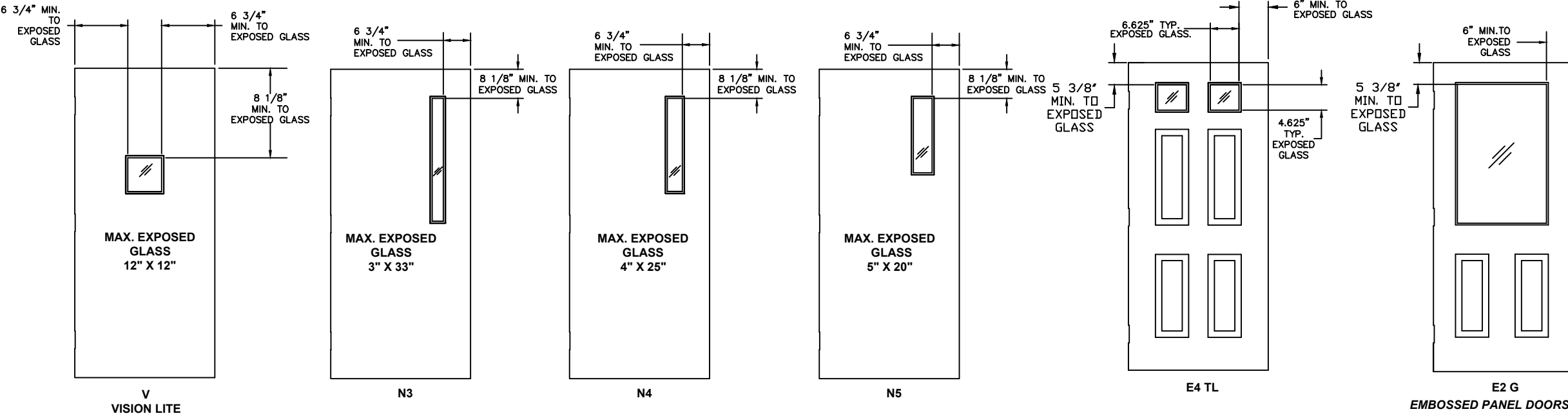
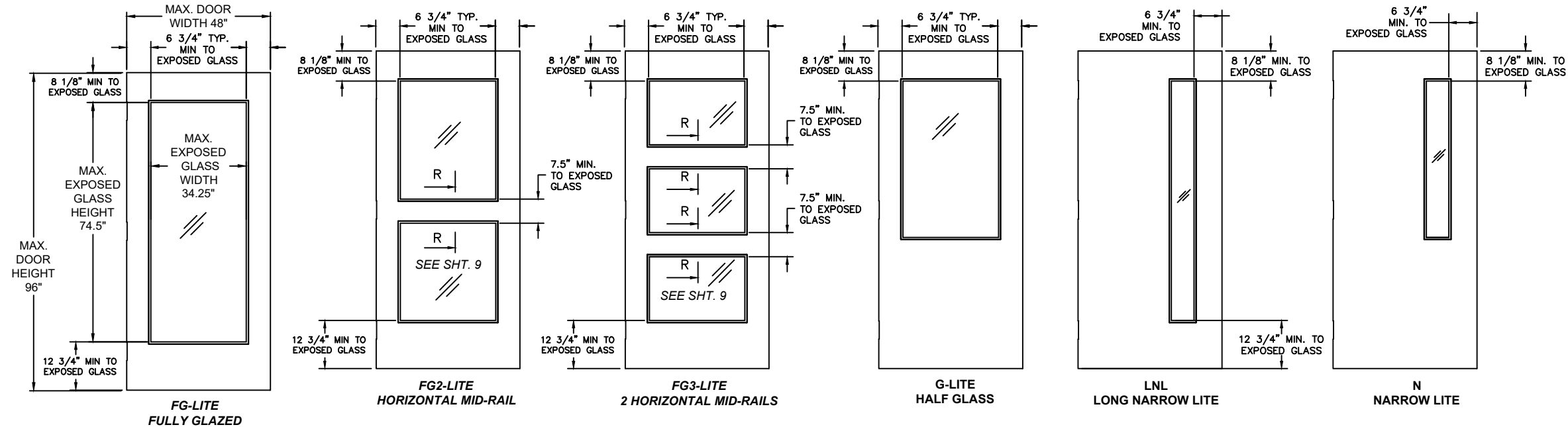


TABLE 6. AVAILABLE STEELCRAFT DOOR CONFIGURATIONS

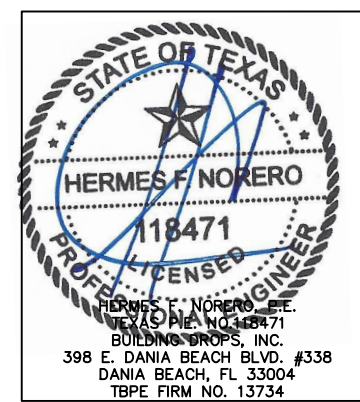
STEELCRAFT DOOR SERIES	CORE MATERIAL PER SHT.9	MAXIMUM DOOR OPENING SIZE		SKIN MATERIAL	
		WIDTH	HEIGHT	DESCR.	GA./MIN. THK
L	HONEYCOMB POLYSTYRENE POLYURETHANE	4'0"	8'0"	CRS GALV	18/.044" 16/.055" 14/.070"
B	STEEL STIFFENED	4'0"	8'0"	CRS GALV	18/.044" 16/.055" 14/.070"
SL	HONEYCOMB POLYSTYRENE POLYURETHANE	4'0"	8'0"	CRS GALV	18/.044" 16/.055"
T	MINERAL FIBER	4'0"	8'0"	CRS GALV	18/.044" 16/.055" 14/.070"
CE	POLYSTYRENE/ HONEYCOMB	4'0"	8'0"	GALV	18/.044" 16/.055"

TABLE 5. STEEL DOOR/FRAME MECHANICAL PROPERTIES

MATERIAL	ASTM REF.	YIELD KSI	TENSILE KSI
CRS	A366		
HRS	A1011	MIN. 30.1	MIN. 44.7
GALV: A60	A924		
SS: 304,316	A240	MIN. 31.2	MIN. 73.2

NOTES: DOOR CONSTRUCTION

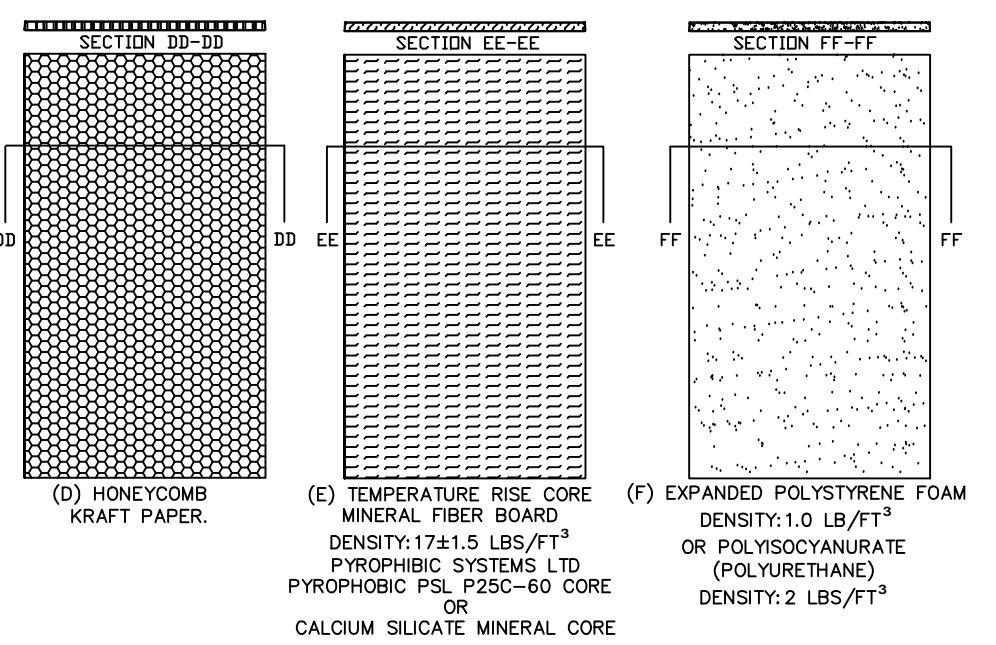
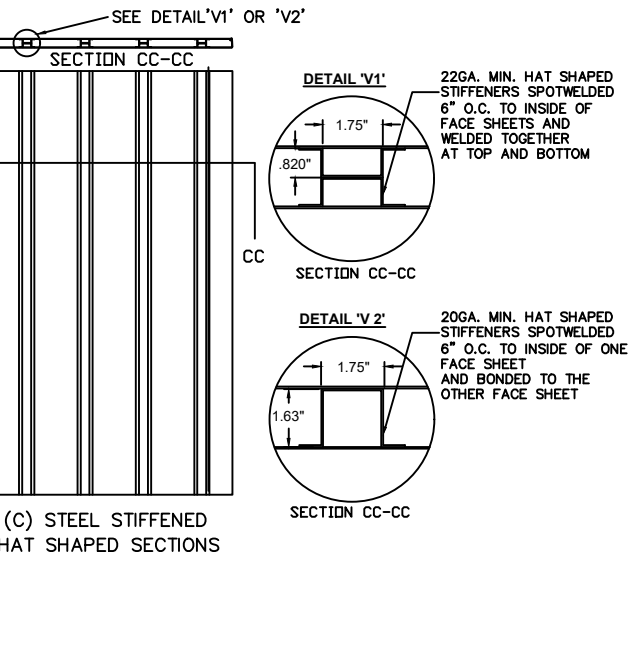
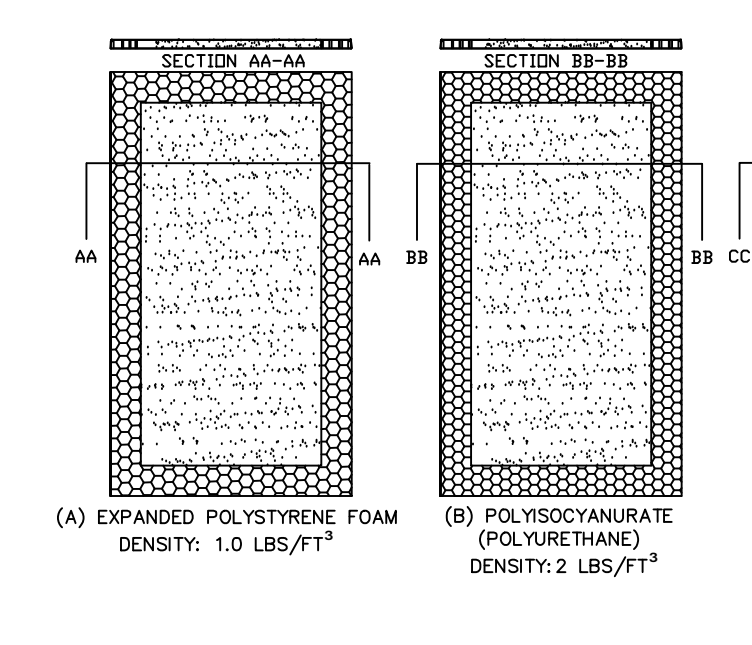
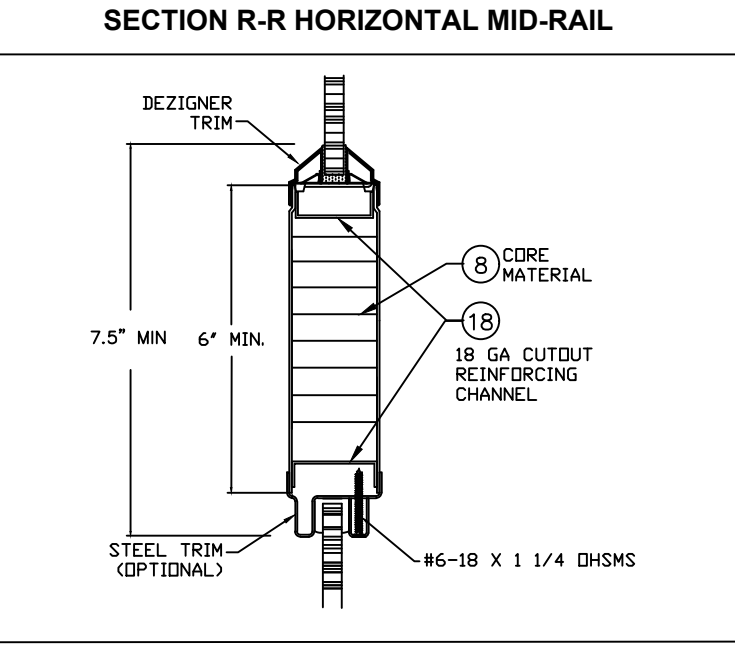
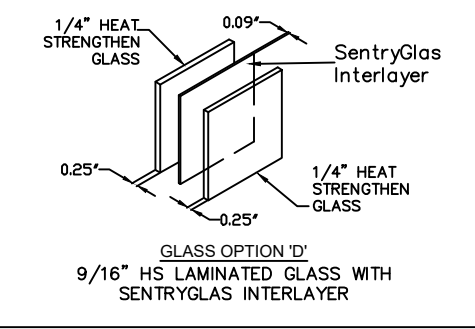
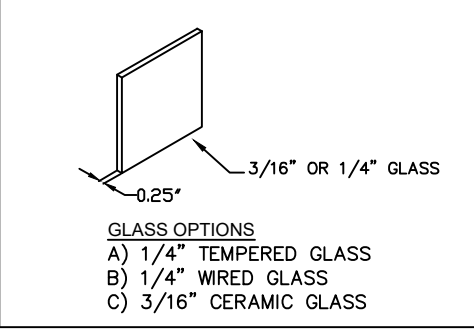
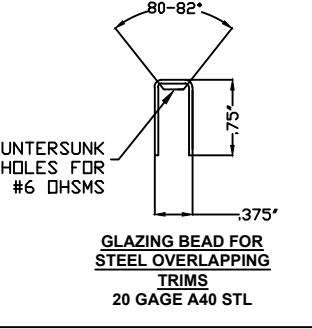
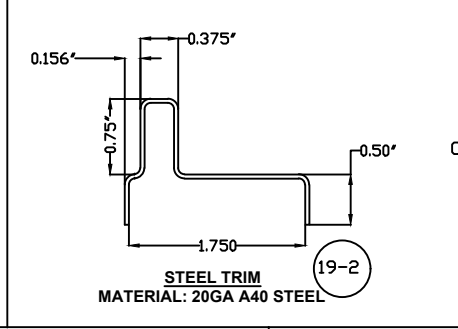
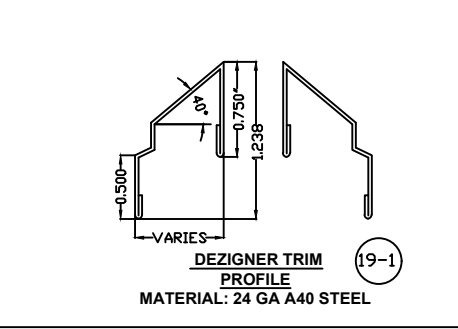
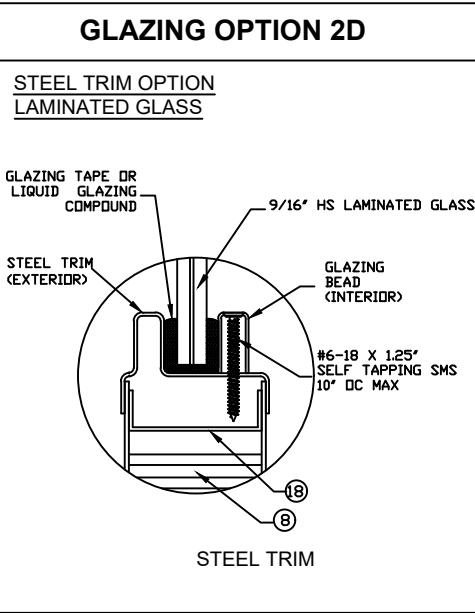
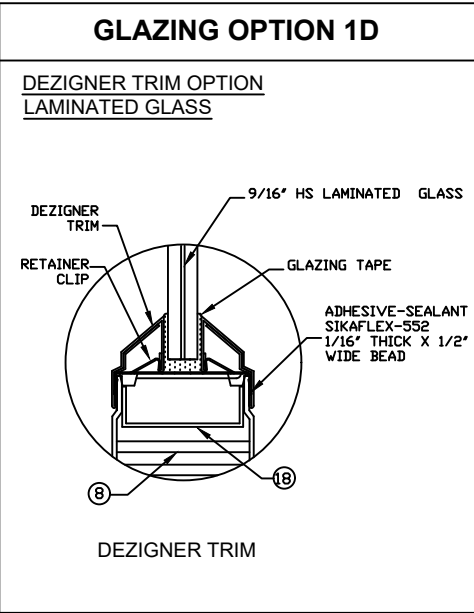
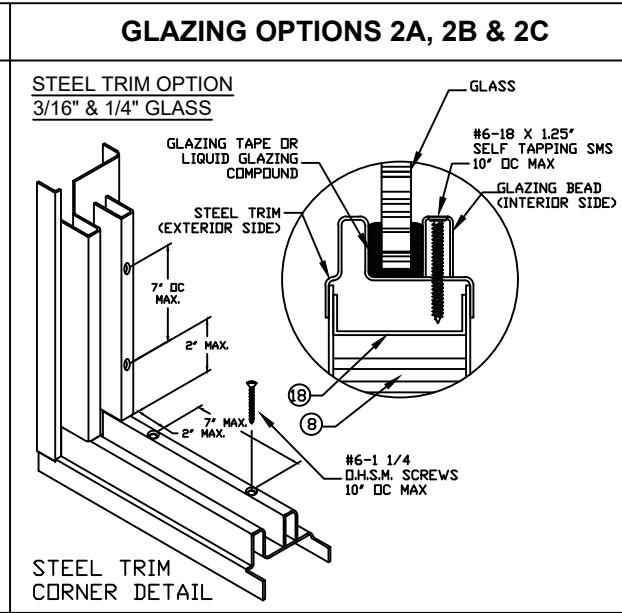
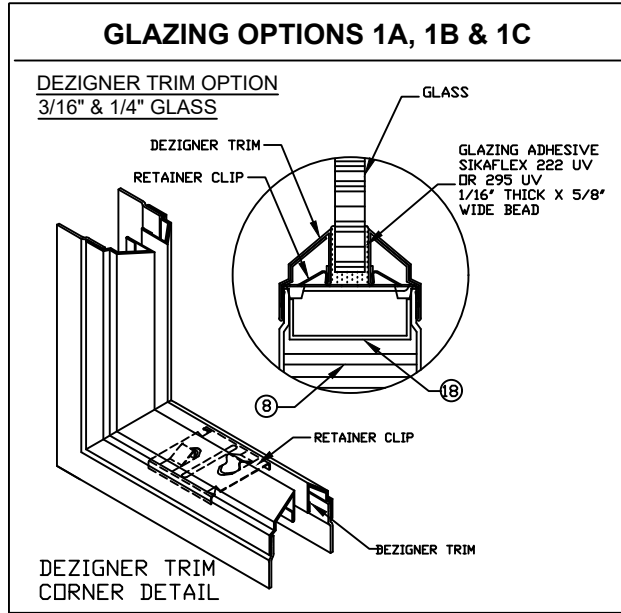
1. MINIMUM DOOR THICKNESS - 1 3/4"
2. ALL GLASS LITE TYPES SHOWN ON THIS SHEET ARE AVAILABLE FOR ALL DOOR CONFIGURATIONS SHOWN ON SHEET 1 AND TABLE 1 SHEET 2 AND TABLE 2 SHEET 3.
3. MAXIMUM EXPOSED GLASS HEIGHT AND WIDTH AS PER SHEETS 1, 2, AND 3.
4. MAXIMUM EXPOSED GLASS SIZE WILL CHANGE IN PROPORTION WITH DOOR SIZE.
5. GLASS LITES NOT LIMITED TO THOSE SHOWN, PROVIDED DIMENSIONS SHOWN ARE MAINTAINED.
6. DOORS WITH MULTIPLE GLASS LITES ARE NOT LIMITED TO THE DESIGNS SHOWN, PROVIDED THE DIMENSIONS SHOWN ARE MAINTAINED.
7. WHEN USING A CONTINUOUS HINGE THE MINIMUM DISTANCE FROM THE EDGE OF THE DOOR TO EXPOSED GLASS IS 6-1/4" AT STILES AND 7-1/2" AT MID RAILS.
8. FOR MATERIAL SPECIFICATIONS REFERENCE TABLE 5.



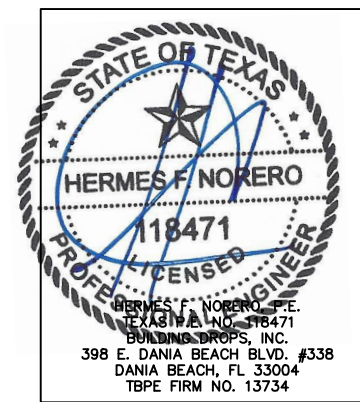
BEND RADIUS		SCHLAGE LOCK COMPANY, LLC 11819 N. PENNSYLVANIA STREET CARMEL, IN 46032	
THIRD ANGLE PROJECTION		TITLE: STEELCRAFT SINGLE OUTSWING OR INSWING GLAZED COMMERCIAL STEEL DOORS WITH AND WITHOUT PANIC EXIT DEVICES	
DRAWN JPD	DATE 02/14/17	GLASS DOOR CONFIGURATIONS AND MATERIAL SPECS.	
CHECKED		SIZE	FLAT
APPROVED		DWG NO.	REV
ENG. APPVL X	x	GSDA330	C 6-15-22
SCALE: NTS		AUTOCAD	SHEET 8 of 10

REVISIONS

LTR	DESCRIPTION	DATE	APPROVED
A	APPROVAL DWG JPD	02/14/17	
B	2018 IBC UPDATE	05/03/21	
C	LOCK UPDATE CA	06/15/22	



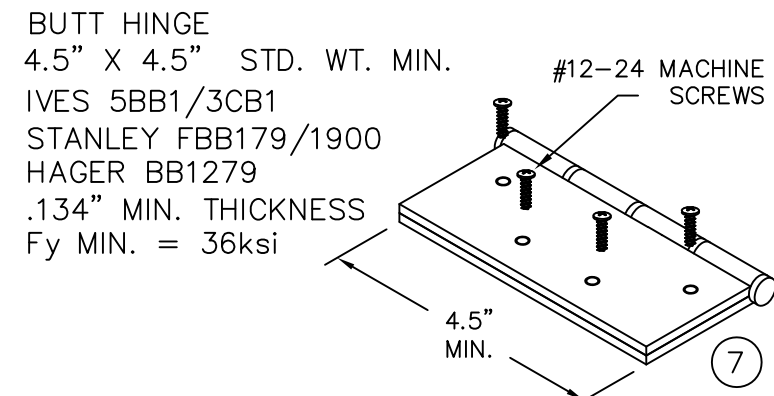
NOTES:
1. CORE MATERIAL SHOWN WITHOUT CUTOUTS FOR REINFORCEMENTS



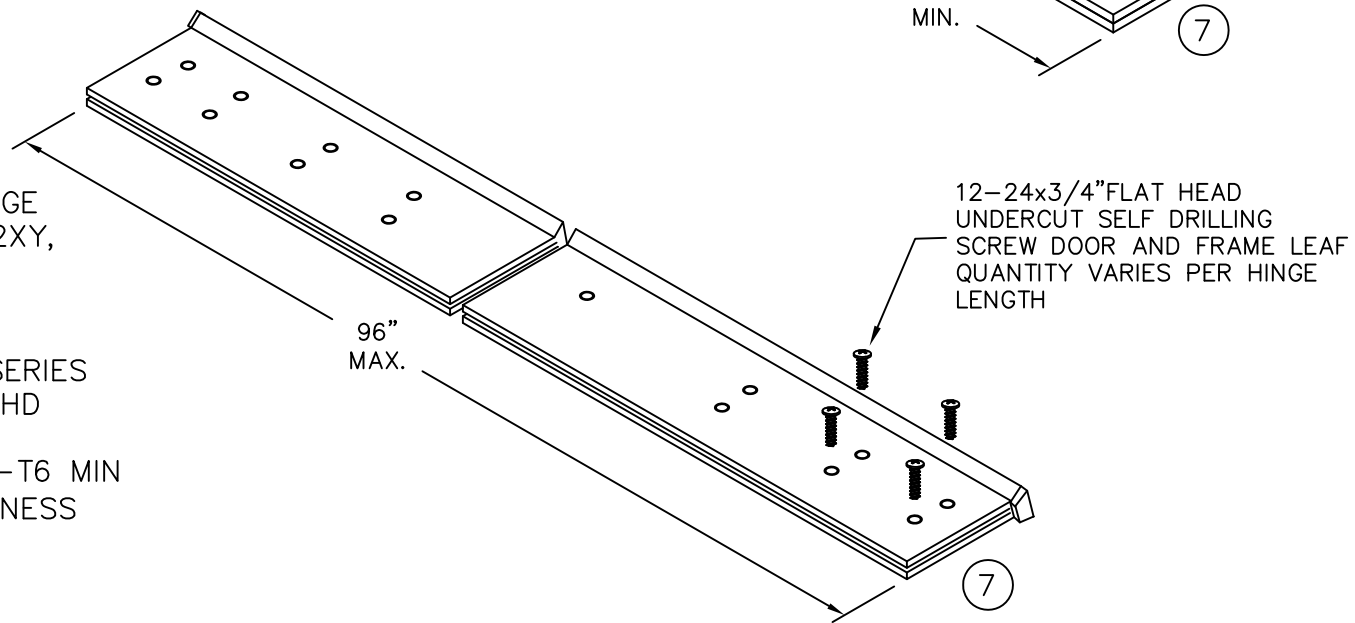
BEND RADIUS		SCHLAGE LOCK COMPANY, LLC 11819 N. PENNSYLVANIA STREET CARMEL, IN 46032	
THIRD ANGLE PROJECTION		TITLE: STEELCRAFT SINGLE OUTSWING OR INSWING GLAZED COMMERCIAL STEEL DOORS WITH AND WITHOUT PANIC EXIT DEVICES	
DRAWN JPD	DATE 02/14/17	GLASS TRIM, GLASS AND DOOR CORE OPTIONS	
CHECKED		SIZE FLAT	DWG NO. GSDA330
APPROVED		REV C	6-15-22
ENG. APPVL		SCALE: NTS	AUTOCAD
		SHEET 9 of 10	

REVISIONS

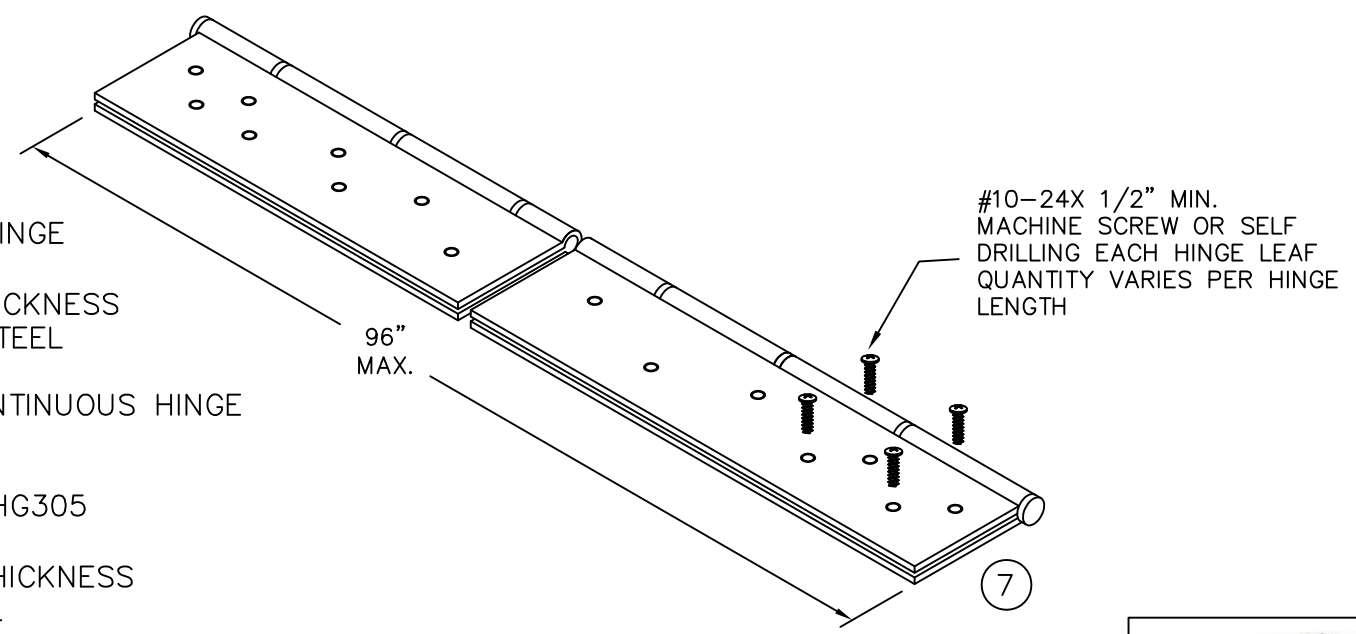
LTR	DESCRIPTION	DATE	APPROVED
A	APPROVAL DWGS.	02/14/17	
B	2018 IBC UPDATE	05/03/21	
C	LOCK UPDATE	06/15/22	



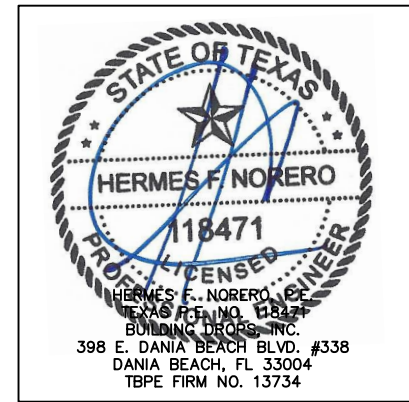
CONTINUOUS HINGE
IVES 112HD, 1112XY,
224HD & 224XY
STANLEY 661HD
SELECT SL11HD
PEMKO FM_HD SERIES
HAGER 780-224HD
ABH A240HD
ALUMINUM 6036-T6 MIN
.110" MIN. THICKNESS



STEEL CONTINUOUS HINGE
IVES 600
.075 MIN. (14GA.) THICKNESS
1012 COLD ROLLED STEEL
Fy MIN. 45ksi
STAINLESS STEEL CONTINUOUS HINGE
IVES 700, 700CS
HAGER 790-900
MARKAR FM-300 & HG305
ABH A500
.075" MIN. (14GA.) THICKNESS
304 STAINLESS STEEL
Fy MIN. 31ksi



- HINGE NOTES:
1. QUANTITY OF SCREWS VARIES PER HINGE LENGTH, MANUFACTURER AND MODEL NUMBER
 2. SCREW SPACING VARIES PER HINGE LENGTH, MANUFACTURER AND MODEL NUMBER
 3. INSTALL HINGES PER THE MANUFACTURERS INSTALLATION INSTRUCTIONS
 4. BUTT AND CONTINUOUS HINGES MAY INCLUDE ELECTRICAL THROUGH-WIRE, POWER TRANSFER, AND MONITORING
 5. REINFORCEMENTS NOT REQUIRED FOR DOOR AND FRAME WHEN USING CONTINUOUS HINGES.



BEND RADIUS		SCHLAGE LOCK COMPANY, LLC 11819 N. PENNSYLVANIA STREET CARMEL, IN 46032	
THIRD ANGLE PROJECTION		TITLE: STEELCRAFT SINGLE OUTSWING OR INSWING GLAZED COMMERCIAL STEEL DOORS WITH AND WITHOUT PANIC EXIT DEVICES	
DRAWN JPD	DATE 02/14/17	HINGE OPTIONS	
CHECKED		SIZE FLAT	DWG NO. GSDA330
APPROVED		SCALE: NTS	REV C 6-15-22
ENG. APPVL		AUTOCAD	SHT 10 OF 10