

CANTERA DOORS AND MORE, INC.

STEEL OUTSWING DOORS WITH & WITHOUT TRANSOMS

INSTALLATION ANCHORAGE DRAWING

GENERAL NOTES:

1. THE PRODUCT DETAILS CONTAINED HEREIN ARE BASED UPON SIGNED AND SEALED TEST REPORT NO. CTLA 1762W-4 AND CTLA 1762W-5 AND ASSOCIATED LABORATORY STAMPED DRAWINGS.
2. THE PRODUCT AND ANCHORAGE HAS BEEN EVALUATED FOR CONFORMANCE TO THE 2018 INTERNATIONAL BUILDING CODE AND THE 2018 INTERNATIONAL RESIDENTIAL CODE AT THE DESIGN PRESSURES STATED HEREIN. TESTING TO FLORIDA BUILDING CODE STANDARDS TAS 201, TAS 202 AND TAS 203 WERE USED TO PROVIDE JUSTIFICATION FOR THE RANGE OF APPROVED OPTIONS SHOWN IN THIS PRODUCT APPROVAL DOCUMENT AND MEET/EXCEED THE REQUIREMENTS OF THE AFOREMENTIONED IRC CODES.
3. ADEQUACY OF THE EXISTING STRUCTURAL CONCRETE / MASONRY AND 2X FRAMING AS A MAIN WIND FORCE RESISTING SYSTEM CAPABLE OF WITHSTANDING AND TRANSFERRING APPLIED PRODUCT LOADS TO THE FOUNDATION IS THE RESPONSIBILITY OF THE ENGINEER OR ARCHITECT OF RECORD.
4. 1X AND 2X BUCKS (WHEN USED) SHALL BE DESIGNED AND ANCHORED TO PROPERLY TRANSFER ALL LOADS TO THE STRUCTURE. BUCK DESIGN AND INSTALLATION IS THE RESPONSIBILITY OF THE ENGINEER OR ARCHITECT OF RECORD.
5. THE INSTALLATION DETAILS DESCRIBED HEREIN ARE GENERIC AND MAY NOT REFLECT ACTUAL CONDITIONS FOR A SPECIFIC SITE. IF SITE CONDITIONS CAUSE INSTALLATION TO DEVIATE FROM THE REQUIREMENTS DETAILED HEREIN, A LICENSED ENGINEER OR ARCHITECT SHALL PREPARE SITE SPECIFIC DOCUMENTS FOR USE WITH THIS DOCUMENT.
6. IN AREAS WHERE WINDBORNE DEBRIS PROTECTION REQUIREMENTS EXIST, USE OF AN IMPACT PROTECTIVE SYSTEM IS NOT REQUIRED FOR THE PRODUCT(S) HEREIN.
7. MATERIALS
 - 7.1. DOOR FRAME AND PANEL MATERIAL: STEEL
 - 7.2. LAMINATED GLAZING INTERLAYER: KURARAY AMERICA, INC. KURARAY SENTRYGLAS INTERLAYER
8. GLASS MEETS THE REQUIREMENTS OF ASTM E1300-04e1. SEE SHEET 5 FOR GLAZING DETAIL.
9. DESIGNATIONS "X" AND "O" STAND FOR THE FOLLOWING:
 - 9.1. OPERABLE PANEL - X
 - 9.2. FIXED PANEL - O

INSTALLATION NOTES:

1. TWO (2) INSTALLATION ANCHORS ARE REQUIRED AT EACH ANCHOR LOCATION SHOWN IN HEAD AND JAMBS. ONE (1) INSTALLATION ANCHOR IS REQUIRED AT EACH ANCHOR LOCATION IN THE THRESHOLD.
2. THE NUMBER OF INSTALLATION ANCHORS DEPICTED IS THE MINIMUM NUMBER OF ANCHORS TO BE USED FOR PRODUCT INSTALLATION.
3. AT EACH INSTALLATION, SHIM GAPS THAT ARE EQUAL TO OR GREATER THAN 1/16". MAXIMUM ALLOWABLE SHIM SIZE IS 1/4".
4. FOR INSTALLATION INTO WOOD FRAMING AT HEAD AND JAMBS, USE 3/8" LAG SCREWS OF SUFFICIENT LENGTH TO ACHIEVE 2 1/2 INCH MINIMUM EMBEDMENT. MINIMUM EDGE DISTANCE IS 3/4 INCH. MINIMUM SPACING IS 1 1/2 INCH. ANCHOR SPACING AS SHOWN IN ELEVATIONS ON SHEETS 2, 3 AND 4.
5. FOR INSTALLATION INTO CONCRETE (HEAD, SILL AND JAMBS - SHOWN IN ELEVATIONS) OR MASONRY (JAMBS):
 - 5.1. AT THRESHOLD (SILL) USE 1/4 INCH DIA. ITW TAPCONS OF SUFFICIENT LENGTH TO ACHIEVE A 1 3/4 INCH MINIMUM EMBEDMENT WITH A MINIMUM EDGE DISTANCE IS 2 1/2 INCHES. APPROVED EQUIVALENT 1/4" DIA. CONCRETE SCREWS AS COMPARED TO ITW TAPCONS ARE ACCEPTABLE. ANCHOR SPACING AS SHOWN IN ELEVATIONS ON SHEETS 2, 3 AND 4.
 - 5.2. AT HEAD AND JAMBS USE EITHER:
 - 5.2.1. 3/8 INCH DIA. POWERS FASTENERS TAPPERS WITH A 1-3/4 INCH MINIMUM EMBEDMENT. MINIMUM EDGE DISTANCE IS 3 INCHES. MINIMUM SPACING IS 2 1/4" AT THE CLIP. ANCHOR SPACING AS SHOWN IN ELEVATIONS ON SHEETS 2, 3 AND 4.
 - 5.2.2. 3/8 INCH DIA. DEWALT SCREW-BOLT+ WITH A 1-1/2 INCH CONCRETE OR 2 INCH MASONRY (CMU) MINIMUM EMBEDMENT. MINIMUM EDGE DISTANCE IS 3 INCHES. MINIMUM SPACING IS 2 1/4" AT THE CLIP. ANCHOR SPACING AS SHOWN IN ELEVATIONS ON SHEETS 2, 3 AND 4.
 - 5.2.3. APPROVED EQUIVALENT 3/8" DIA. CONCRETE SCREWS AS COMPARED TO POWERS FASTENERS TAPPERS OR DEWALT SCREW-BOLT+ ARE ACCEPTABLE.
6. MINIMUM EMBEDMENT AND EDGE DISTANCE EXCLUDE WALL FINISHES (INCLUDING BUT NOT LIMITED TO STUCCO, FOAM, BRICK VENEER, AND SIDING).
7. INSTALLATION ANCHORS AND ASSOCIATED HARDWARE MUST BE MADE OF CORROSION RESISTANT MATERIAL OR HAVE A CORROSION RESISTANT COATING.
8. INSTALLATION ANCHORS SHALL BE INSTALLED IN ACCORDANCE WITH ANCHOR MANUFACTURER'S INSTALLATION INSTRUCTIONS. ANCHORS SHALL NOT BE USED IN SUBSTRATES WITH STRENGTHS LESS THAN THE MINIMUM STRENGTH SPECIFIED BY THE ANCHOR MANUFACTURER BELOW.
9. INSTALLATION ANCHOR CAPACITIES FOR PRODUCTS HEREIN ARE BASED ON SUBSTRATE MATERIALS WITH THE FOLLOWING PROPERTIES:
 - 9.1. WOOD - MINIMUM SPECIFIC GRAVITY OF 0.42.
 - 9.2. CONCRETE - MINIMUM COMPRESSIVE STRENGTH OF 2500 PSI.
 - 9.3. MASONRY
 - 9.3.1. STRENGTH CONFORMANCE TO ASTM C90, NORMAL WEIGHT; OR
 - 9.3.2. STRENGTH CONFORMANCE TO ASTM C62, GRADE SW MINIMUM. MORTAR MUST BE TYPE N, S OR M WITH MINIMUM COMPRESSIVE STRENGTH, f'm, OF 2,000 PSI.
 - 9.3.3. SHALL BE GROUT FILLED PER 2018 INTERNATIONAL BUILDING/RESIDENTIAL CODES.
10. THE STRUCTURAL PERFORMANCE TEST REPORT INDICATES THAT HINGE FRAME SCREWS WERE NOT REPLACED WITH ADDITIONAL INSTALLATION ANCHORS SCREWS DURING PRODUCT TESTING. HINGE INSTALLATION USING TESTED HINGE SCREWS ARE QUALIFIED BY SATISFACTORY TEST PERFORMANCE.
11. INSTALLATION CLIPS (L BRACKET ITEM NUMBERS 8, 8A, 8B AND 8C) CAN BE INSTALLED TO THE EXTERIOR (AS SHOWN IN THE SECTION VIEWS) OR THE INTERIOR.

TABLE OF CONTENTS

SHEET	DESCRIPTION
1	GENERAL NOTES, INSTALLATION NOTES & D.P. CHART
2	ELEVATION & ANCHOR LAYOUT (O/XX RECTANGULAR TRANSOM)
3	ELEVATION & ANCHOR LAYOUT (XX)
4	ELEVATION & ANCHOR LAYOUT (O/XX ARCH TRANSOM)
5	VERTICAL SECTIONS AND GLAZING DETAIL
6	VERTICAL SECTIONS
7	HORIZONTAL SECTIONS
8	HORIZONTAL SECTIONS
9	COMPONENTS AND BILL OF MATERIALS
10	INSTALLATION CLIP DETAILS
11	APPROVED CONFIGURATIONS

DESIGN PRESSURE RATING (PSF)

CONFIGURATIONS	WHERE WATER PENETRATION REQUIREMENT IS NEEDED	WHERE WATER PENETRATION REQUIREMENT IS NOT NEEDED	IMPACT RATING
DOUBLE DOOR	+45.0/-70.0	±70.0	WIND ZONE 4, MISSILE LEVEL D
DOUBLE DOOR W/ RECTANGULAR TRANSOM	+15.0/-70.0	±70.0	
DOUBLE DOOR WITH ARCH TRANSOM	+45.0/-70.0	±70.0	

PROJECT NO. 416-0102

CANTERA DOORS & MORE, INC.

1310 RANCH ROAD 620 SOUTH, SUITE B204
AUSTIN, TX 78734

DATE: 2/26/16
DRAWING NO.: CANT1003
SHEET: 1 OF 11

DRAWN BY: RJA

SCALE: N.T.S.

REV: A

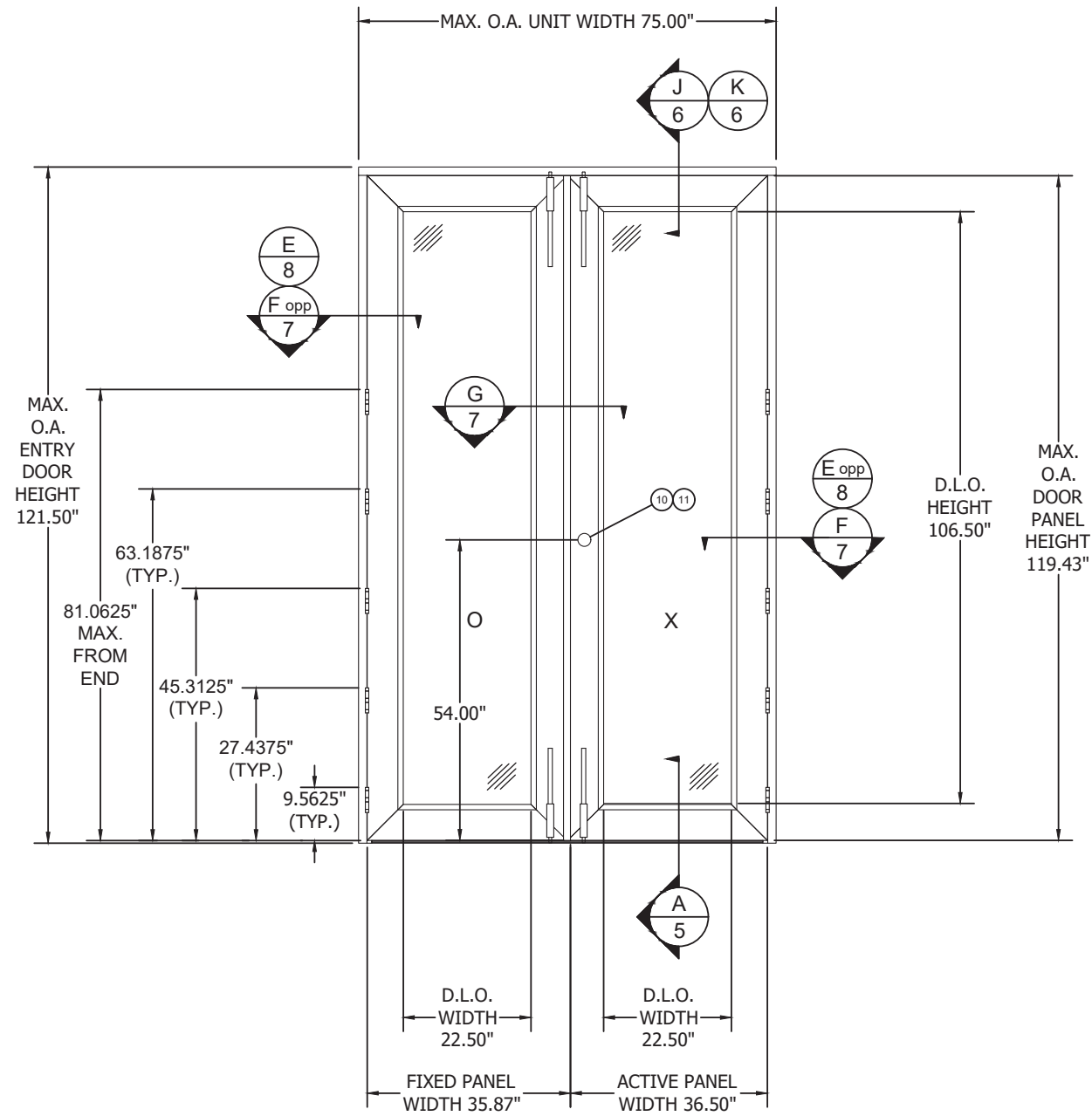
TITLE: STEEL OUTSWING DOORS WITH & WITHOUT TRANSOMS
GENERAL NOTES, INSTALLATION NOTES & D.P. CHART

PREPARED BY: RJA

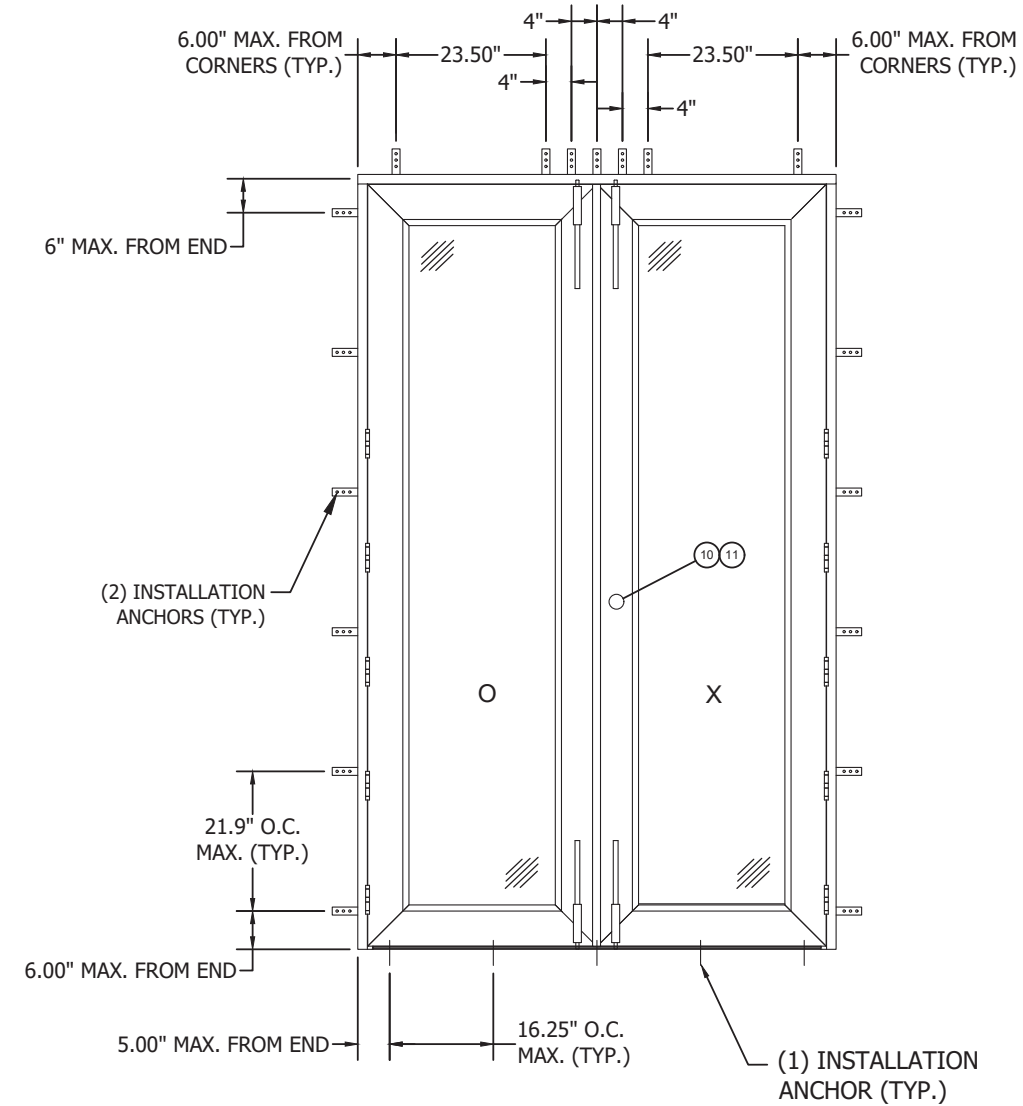
PTC PRODUCT DESIGN GROUP, LLC
P.O. Box 520775
Longwood, FL 32752-0775
Texas Registration No. F-13740

Phone: 321.690.1788
Fax: 321.690.1789
Email: info@ptc-corp.com

Robert J. Amoruso, P.E.
TEXAS P.E. No. 80817



ELEVATION
INTERIOR VIEW



ANCHOR LAYOUT
INTERIOR VIEW

NOTE:
HINGES SHOWN ARE THE MINIMUM
REQUIRED. ADDITIONAL HINGES,
IF DESIRED, MAY BE USED.

PROJECT NO. 416-0102			
		DATE	BY
		3/15/22	RJA
		DESCRIPTION	REV
		UPDATE TO 2018 IBC AND 2018 IRC	A

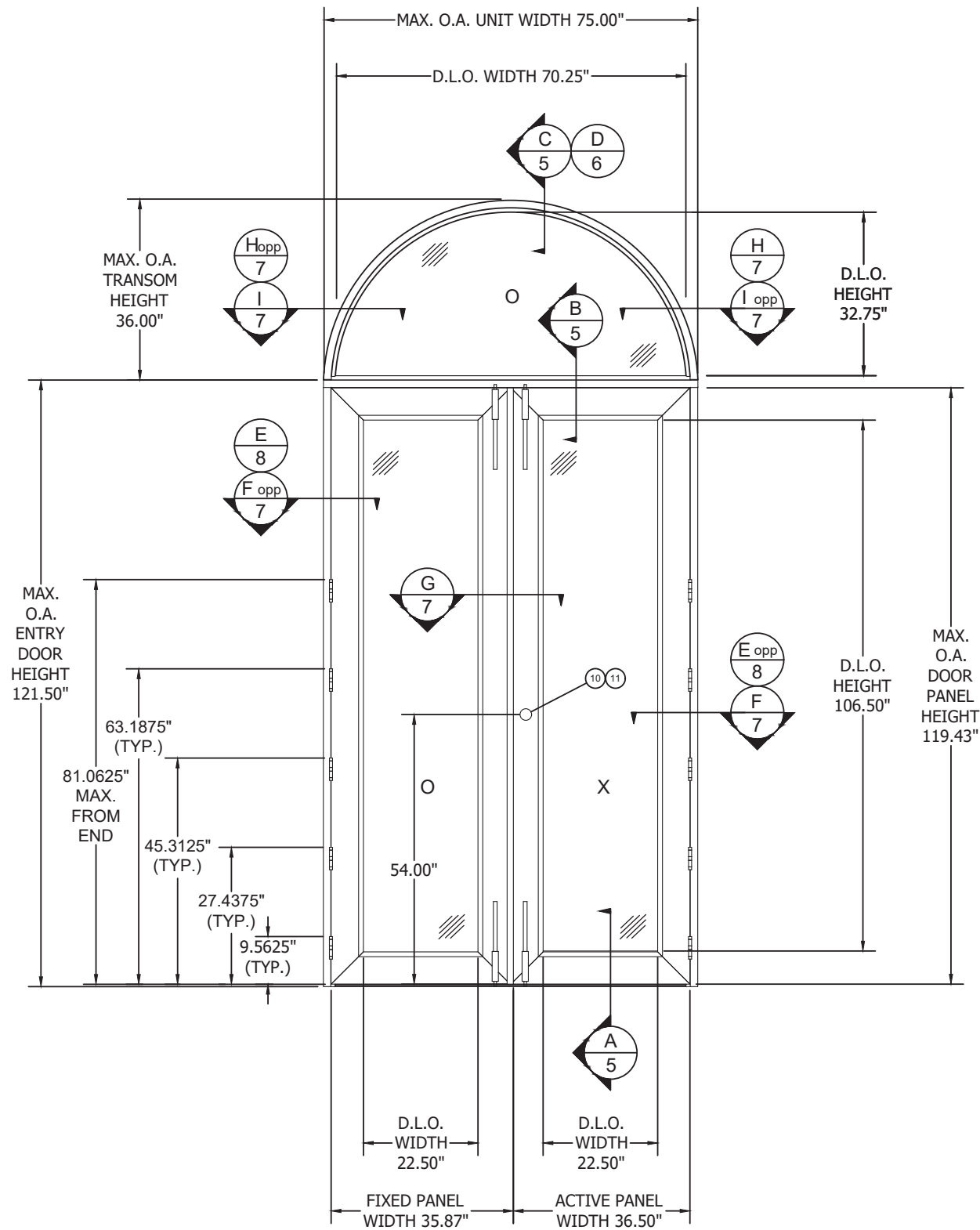
CANTERA DOORS & MORE, INC.
1310 RANCH ROAD 620 SOUTH, SUITE B204
AUSTIN, TX 78734

TITLE: STEEL OUTSWING DOORS WITH & WITHOUT TRANSOMS
ELEVATION & ANCHOR LAYOUT

DRAWN BY:	RJA	DATE:	2/26/16
SCALE:	N.T.S.	DRAWING NO.:	CANT1003
REV:	A	SHEET:	3 OF 11

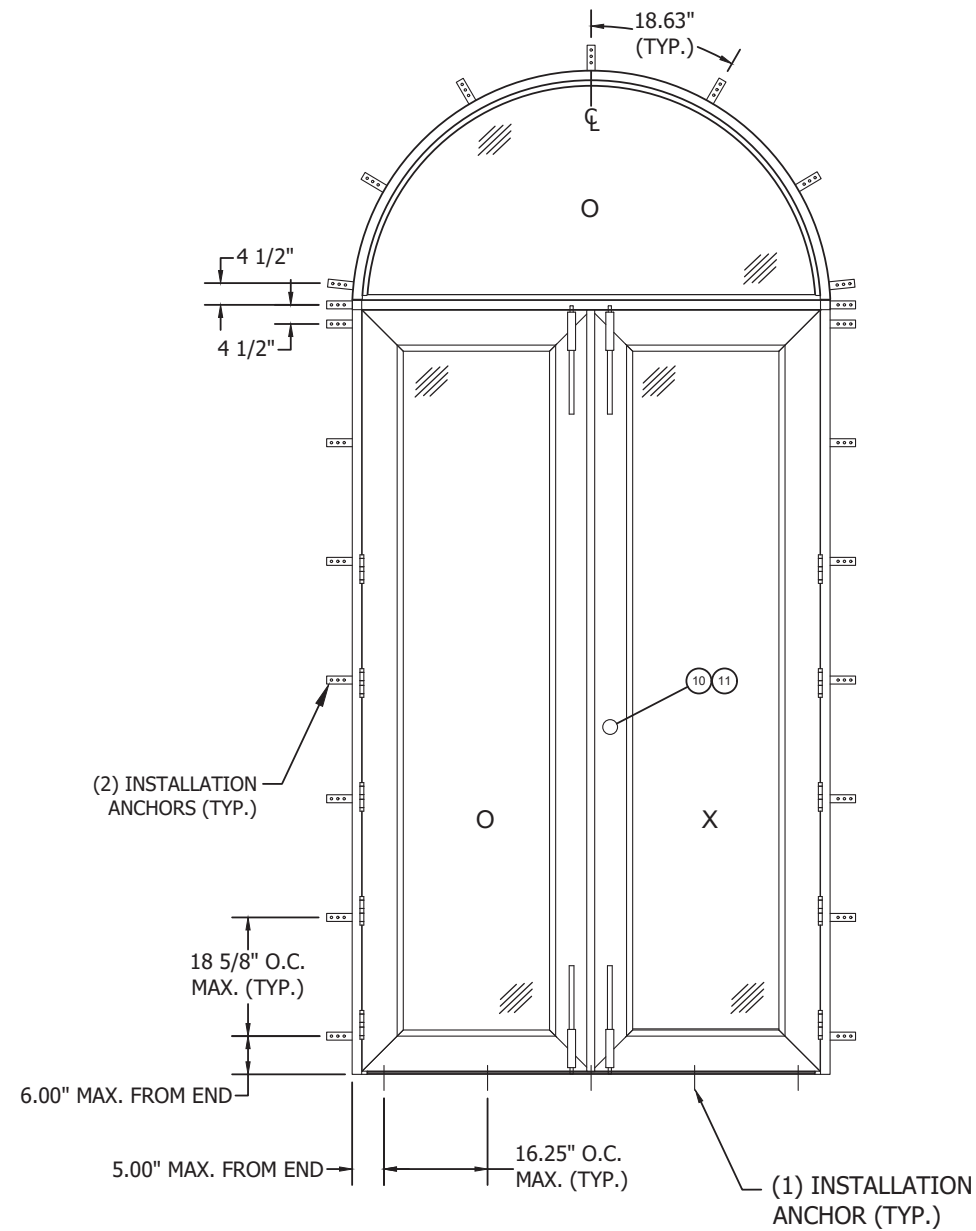
PTC PRODUCT DESIGN GROUP, LLC
P.O. Box 520775
Longwood, FL 32752-0775
Phone: 321.690.1788
Fax: 321.690.1789
Texas Registration No. F-13740
Email: info@ptc-corp.com

Robert J. Amoruso, P.E.
TEXAS P.E. No. 80817



ELEVATION
INTERIOR VIEW

NOTE:
HINGES SHOWN ARE THE MINIMUM
REQUIRED. ADDITIONAL HINGES,
IF DESIRED, MAY BE USED.



ANCHOR LAYOUT
INTERIOR VIEW

PROJECT NO. 416-0102		DATE	BY
		3/15/22	RJA
		DESCRIPTION	REV
		UPDATE TO 2018 IBC AND 2018 IRC	A

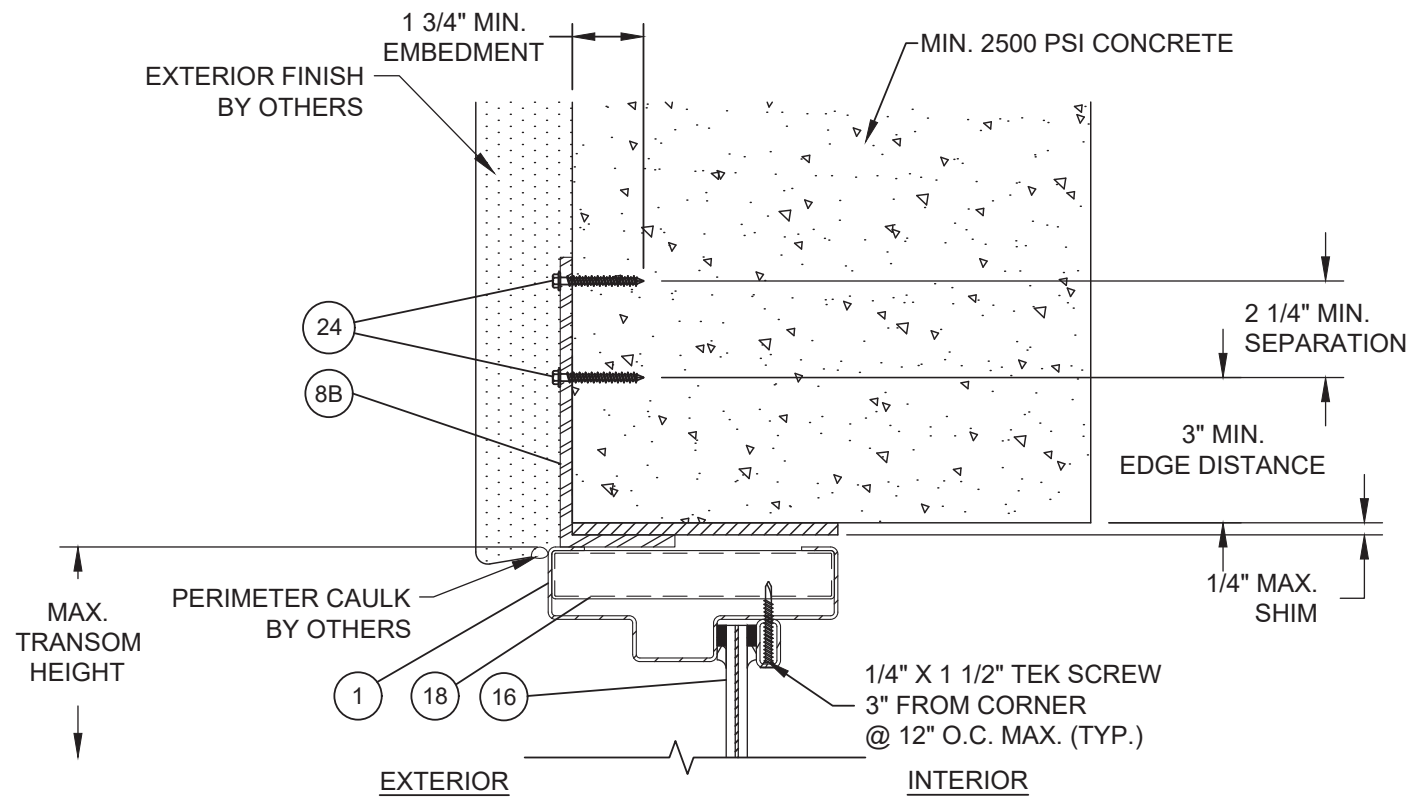
CANTERA DOORS & MORE, INC.
1310 RANCH ROAD 620 SOUTH, SUITE B204
AUSTIN, TX 78734

TITLE: STEEL OUTSWING DOORS WITH & WITHOUT TRANSOMS
ELEVATION & ANCHOR LAYOUT

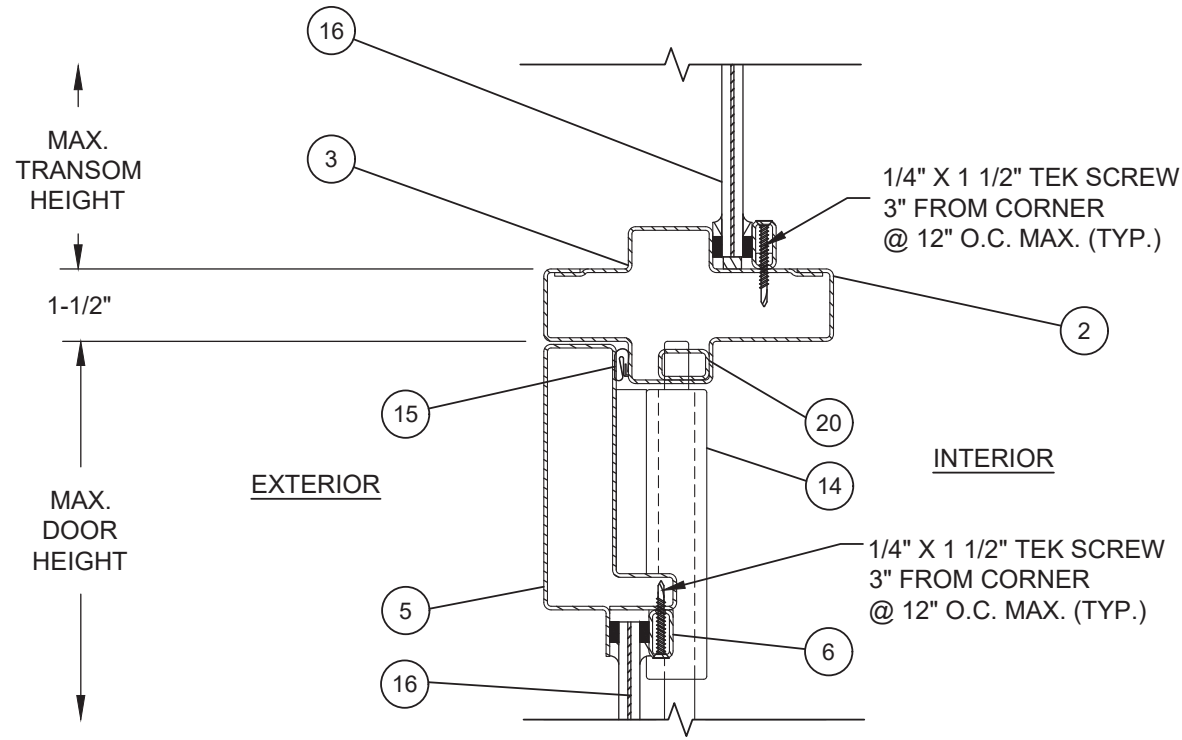
DRAWN BY:	RJA	DATE:	2/26/16
SCALE:	N.T.S.	DRAWING NO.:	CANT1003
REV:	A	SHEET:	4 OF 11

PTC PRODUCT DESIGN GROUP, LLC
P.O. Box 520775
Longwood, FL 32752-0775
Phone: 321.690.1788
Fax: 321.690.1789
Texas Registration No. F-13740
Email: info@ptc-corp.com

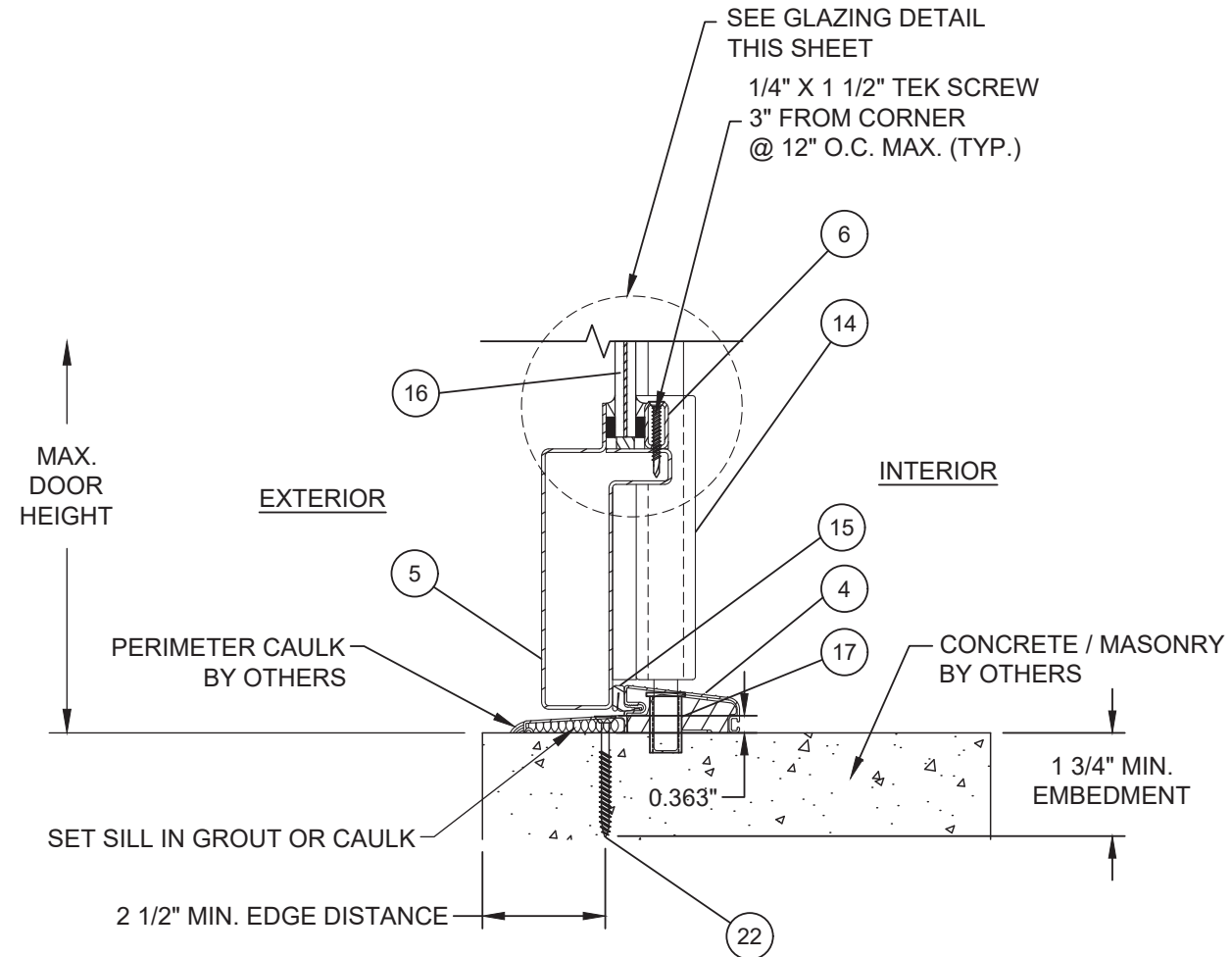
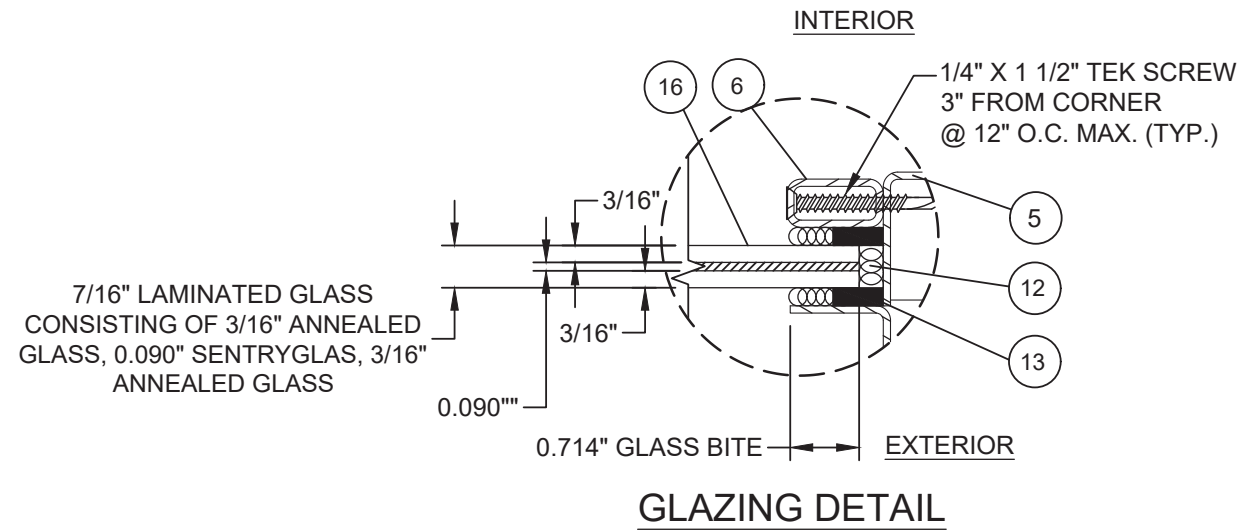
Robert J. Amoruso, P.E.
TEXAS P.E. No. 80817



C
5 VERTICAL SECTION
TRANSOM
CONCRETE / MASONRY



B
5 VERTICAL SECTION
DOOR AT TRANSOM



A
5 VERTICAL SECTION
CONCRETE / MASONRY SUBSTRATE

PROJECT NO. 416-0102

CANTERA DOORS & MORE, INC.
1310 RANCH ROAD 620 SOUTH, SUITE B204
AUSTIN, TX 78734

TITLE: STEEL OUTSWING DOORS WITH & WITHOUT TRANSOMS
VERTICAL SECTIONS AND GLAZING DETAIL

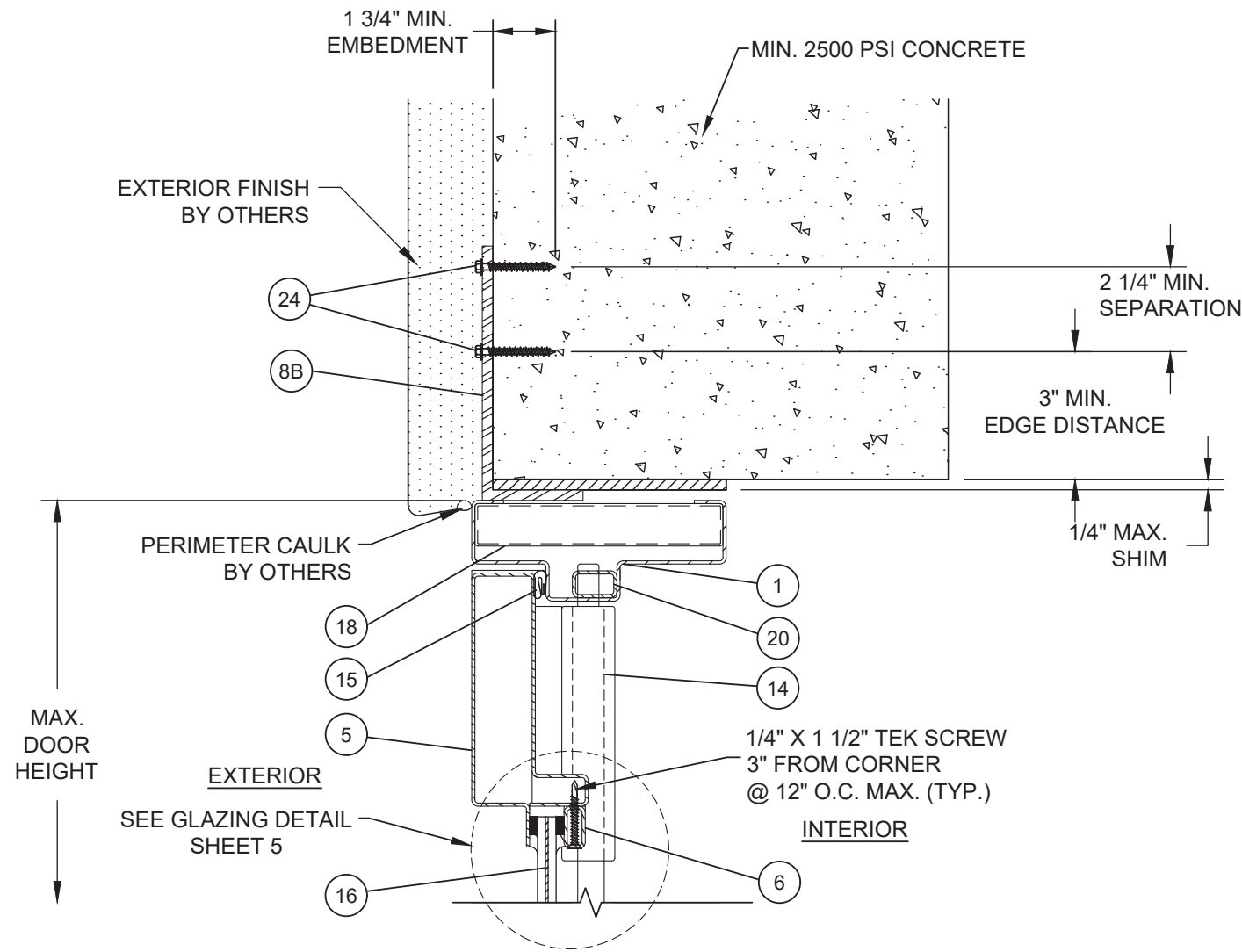
PREPARED BY: **FDI**
PTC PRODUCT DESIGN GROUP, LLC
P.O. Box 520775
Longwood, FL 32752-0775
Texas Registration No. F-13740
Phone: 321.690.1788
Fax: 321.690.1789
Email: info@pdc-corp.com

DRAWN BY: RJA
SCALE: N.T.S.
REV: A

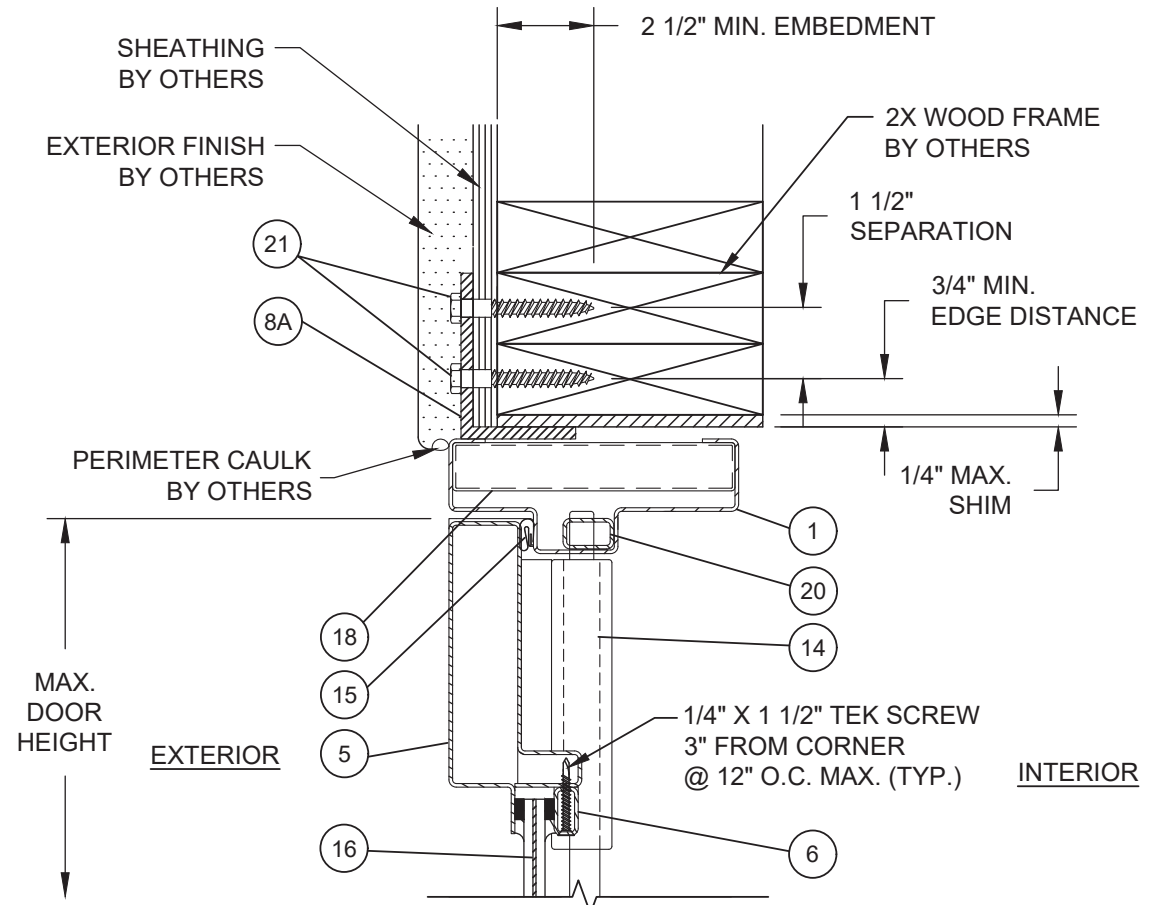
DATE: 2/26/16
DRAWING NO.: CANT1003
SHEET: 5 OF 11

BY	RJA	DATE	
REV	A	DESCRIPTION	UPDATE TO 2018 IBC AND 2018 IRC
REV			

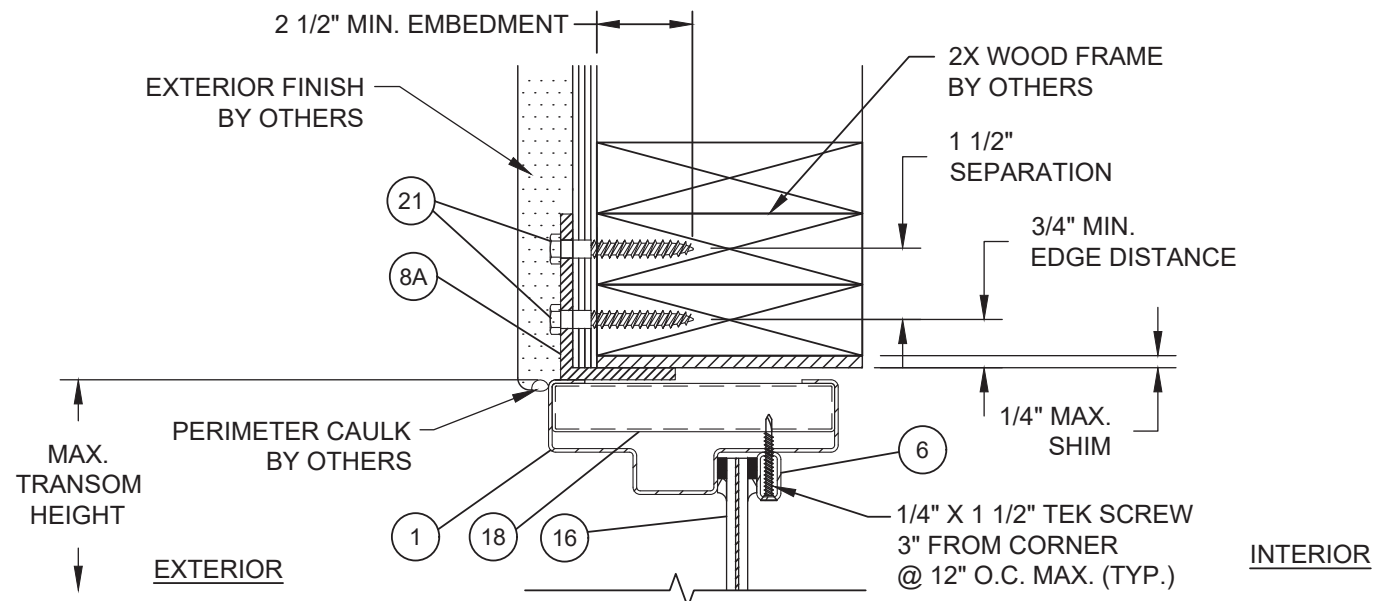
Robert J. Amoruso, P.E.
TEXAS P.E. No. 80817



J
6 VERTICAL SECTION
CONCRETE / MASONRY



K
6 VERTICAL SECTION
2X WOOD FRAME SUBSTRATE



D
6 VERTICAL SECTION AT TRANSOM
2X WOOD FRAME SUBSTRATE

PROJECT NO. 416-0102

CANTERA DOORS & MORE, INC.
1310 RANCH ROAD 620 SOUTH, SUITE B204
AUSTIN, TX 78734

TITLE: STEEL OUTSWING DOORS WITH & WITHOUT TRANSOMS
VERTICAL SECTIONS

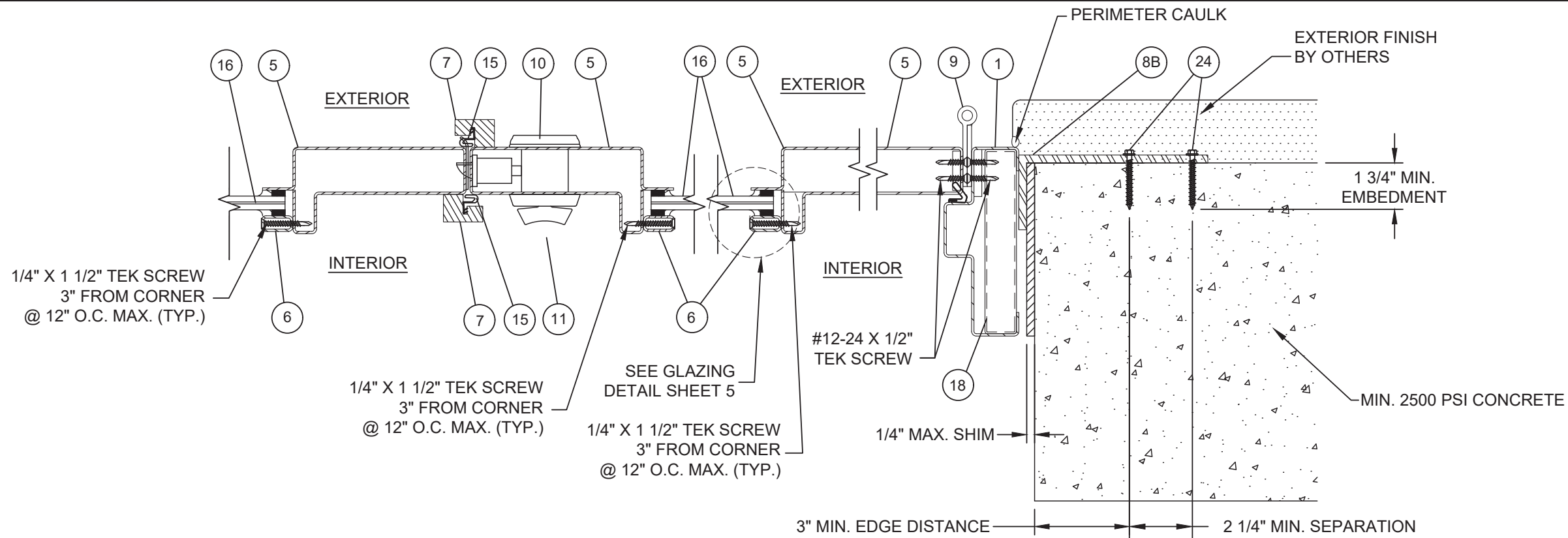
PREPARED BY: **FDI**
PTC PRODUCT DESIGN GROUP, LLC
P.O. Box 520775
Longwood, FL 32752-0775
Texas Registration No. F-13740
Email: info@ptc-corp.com

DRAWN BY: RJA
SCALE: N.T.S.
REV: A

DATE: 2/26/16
DRAWING NO.: CANT1003
SHEET: 6 OF 11

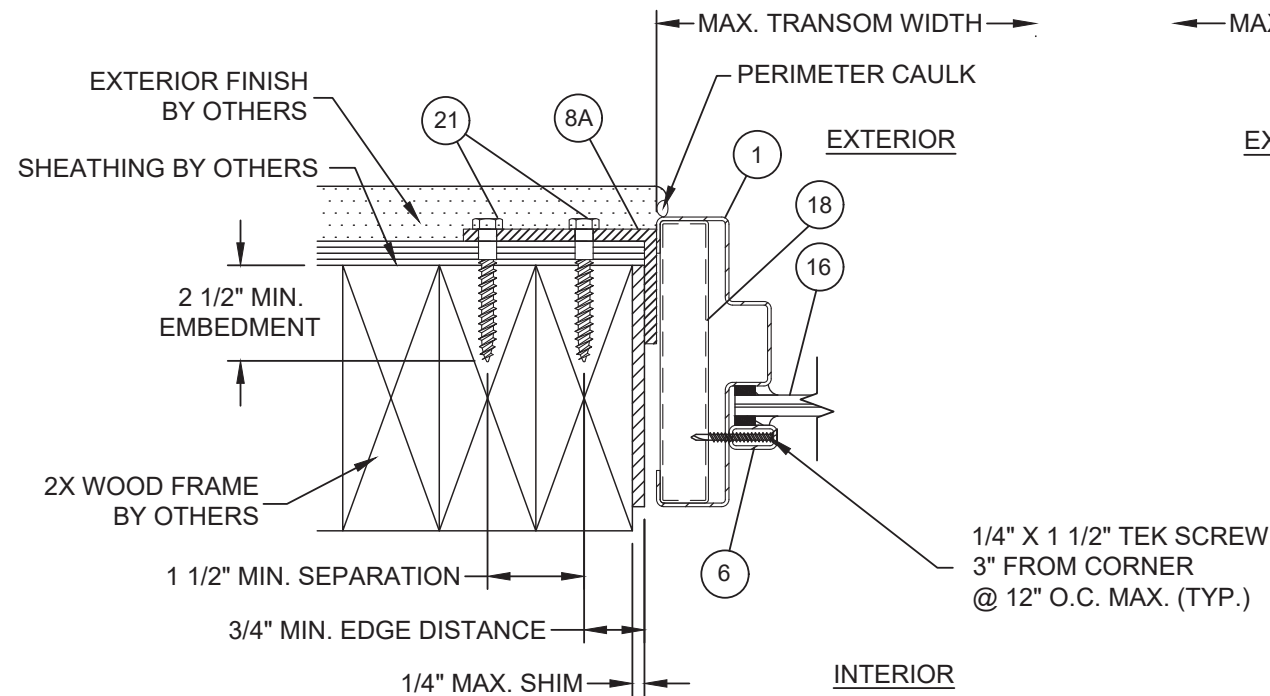
REV	DESCRIPTION	DATE	BY
A	UPDATE TO 2018 IBC AND 2018 IRC	3/15/22	RJA

Robert J. Amoruso, P.E.
TEXAS P.E. No. 80817

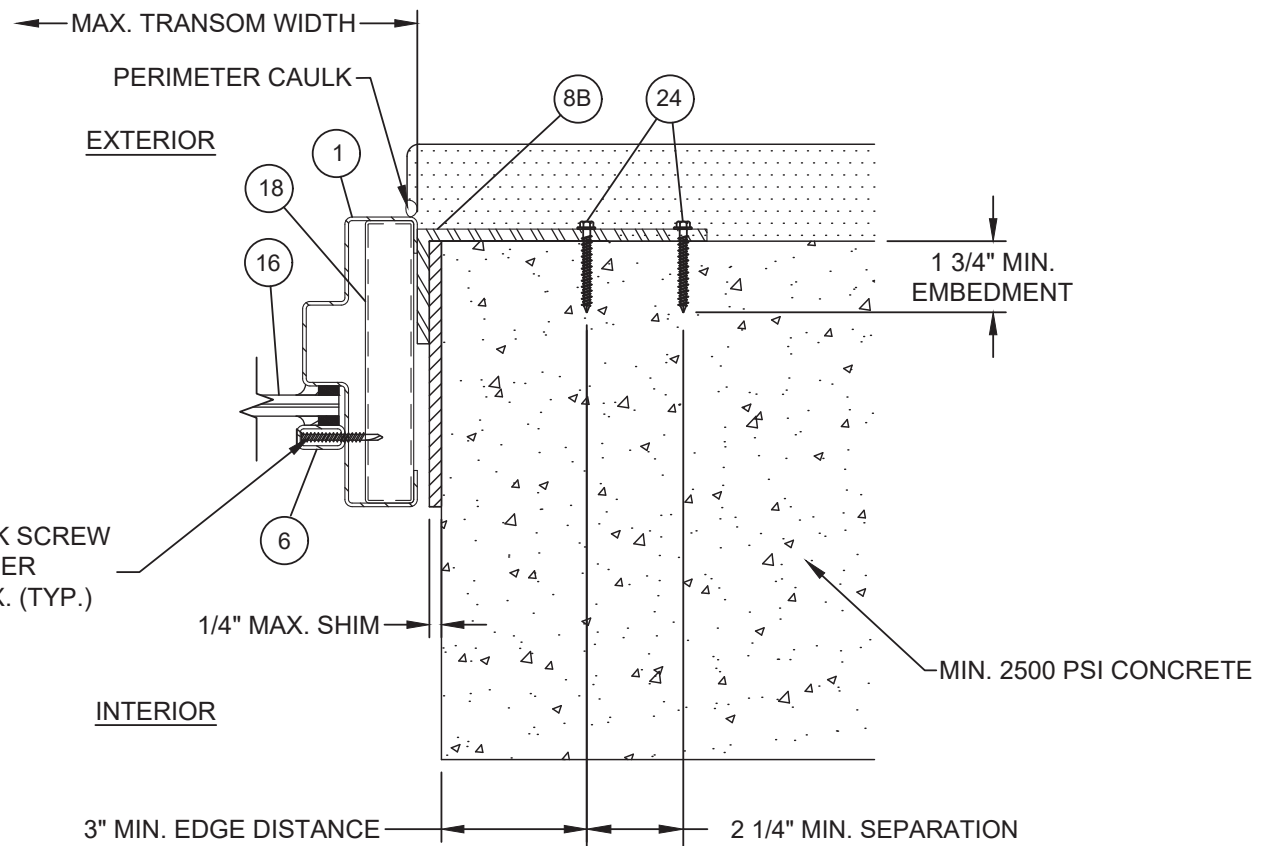


G
7 **HORIZONTAL SECTION**
DOOR AT ASTRAGAL

F
7 **HORIZONTAL SECTION**
CONCRETE \ MASONRY



I
7 **HORIZONTAL SECTION**
2X WOOD FRAME SUBSTRATE



H
7 **HORIZONTAL SECTION**
CONCRETE / MASONRY

PROJECT NO. 416-0102

CANTERA DOORS & MORE, INC.
1310 RANCH ROAD 620 SOUTH, SUITE B204
AUSTIN, TX 78734

TITLE: STEEL OUTSWING DOORS WITH & WITHOUT TRANSOMS
HORIZONTAL SECTIONS



Robert J. Amoruso, P.E.
TEXAS P.E. No. 80817

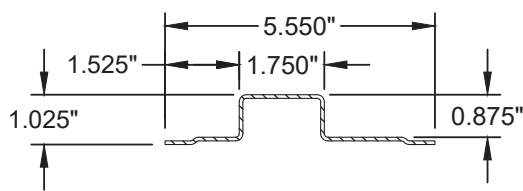
DATE: 2/26/16
DRAWING NO.: CANT1003
SHEET: 7 OF 11
SCALE: N.T.S.
REV: A

REV	DESCRIPTION	DATE	BY
A	UPDATE TO 2018 IBC AND 2018 IRC	3/15/22	RJA

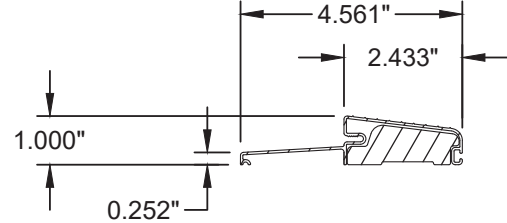
BILL OF MATERIALS

ITEM #	PART #	DESCRIPTION	MATERIAL	VENDOR
1	M600E	FRAME HEAD/ JAMB (4.5" MIN. / 10" MAX.)	STEEL	CANTERA
2	M600E	HORIZONTAL MULL	STEEL	CANTERA
3	T600	TRANSOM INSERT	STEEL	CANTERA
4	FOBS4565	FRAME THRESHOLD	ALUMINUM	ENDURA
5	B550	DOOR PANEL FRAME	STEEL	CANTERA
6	PV100	GLASS STOP	STEEL	CANTERA
7	TJ125	ASTRAGAL	STEEL	CANTERA
8/8A/8B/8C	-----	"L" BRACKET	STEEL	CANTERA
9	BB1279	BALL BEARING HINGE	BRASS	HAGER
10	8231	DEAD BOLT	STEEL	BALDWIN
11	8231	DOOR HANDLE	STEEL	BALDWIN
12	995	SILICONE SEALANT	SILICONE	DOW CORNING
13	V-998	ADHESIVE GLAZING TAPE	-----	NORTON
14	SB600	SURFACE MOUNTED BOLT	STEEL	CANTERA
15	QDST 675	Q-LON WEATHERSTRIPPING	FOAM PVC	SCHLEGEL
16	SGP	7/16" LAMINATED ANNEALED GLASS	GLASS	CARDINAL
17	ST750	SURFACE BOLT THIMBLE	STEEL	CANTERA
18	R600E	"L" BRACKET STIFFNER (4.5" MIN. / 10" MAX.)	STEEL	CANTERA
19	PL600E	ANGLED STEEL REINFORCEMENT PLATE	STEEL	CANTERA
20	RS600E	SURFACE BOLT RETAINER	STEEL	CANTERA
21	-----	3/8" LAG SCREW	STEEL	-----
22	-----	1/4" ADVANCED THREADFORM TAPCON	STEEL	ITW
23	103 LPA, 200, 201	OPTIONAL PULL HANDLES	STEEL	BALDWIN
24	-----	3/8" POWERS TAPPER	STEEL	POWERS
25	RTSBKSD	SURFACE BOLT KEEPER FOR SINGLE RADIUS TOP DOORS (NOT SHOWN)	STEEL	CANTERA

③ TRANSOM INSERT
0.075" TYP. WALL THICKNESS



④ FRAME THRESHOLD
0.049" TYP. WALL THICKNESS



⑧ "L" BRACKET - BLANK CLIP
0.250" TYP. WALL THICKNESS

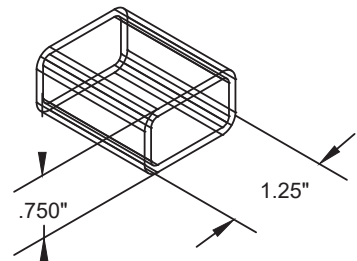
⑧A "L" BRACKET - 2X WOOD BUCK CLIP
0.250" TYP. WALL THICKNESS

⑧B "L" BRACKET - CONCRETE/MASONRY CLIP
0.250" TYP. WALL THICKNESS

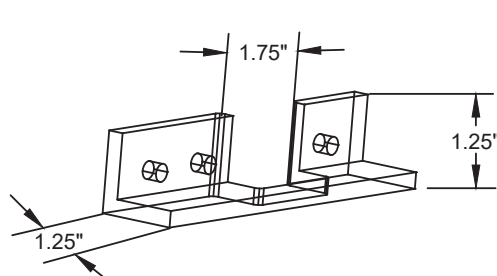
⑧C "L" BRACKET - 2X WOOD BUCK AND CONCRETE/MASONRY CLIP
0.250" TYP. WALL THICKNESS

SEE SHEET 10 FOR CLIP DETAILS

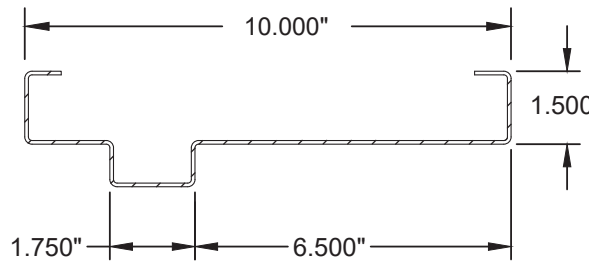
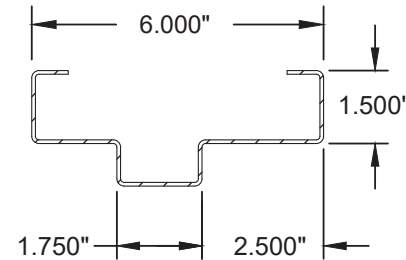
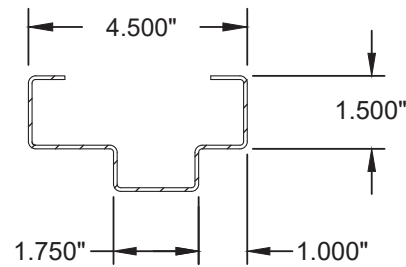
⑳ SURFACE BOLT RETAINER
0.075" TYP. WALL THICKNESS



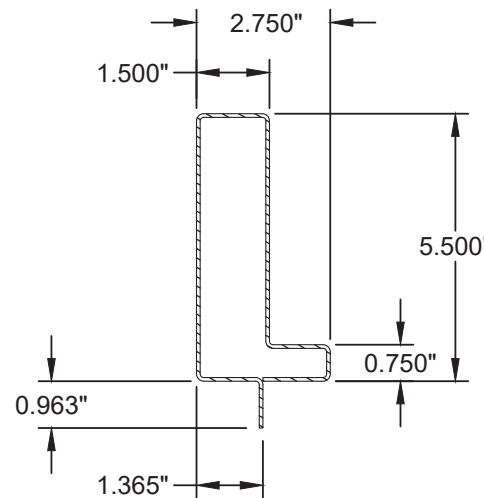
⑲ ANGLE STEEL REINFORCEMENT PLATE
0.250" TYP. WALL THICKNESS



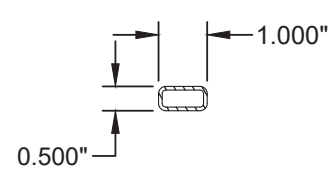
① MAIN FRAME (HEAD / JAMB)
0.075" TYP. WALL THICKNESS



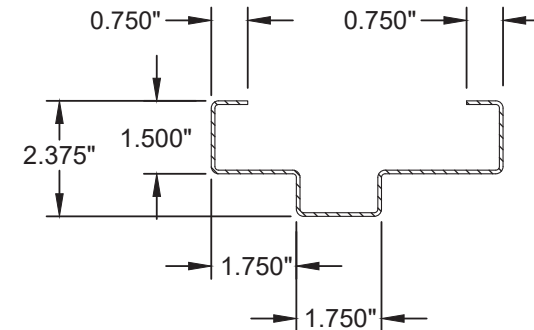
⑤ DOOR PANEL FRAME
0.075" TYP. WALL THICKNESS



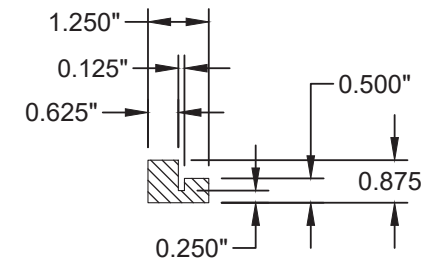
GLASS STOP ⑥
0.075" TYP. WALL THICKNESS



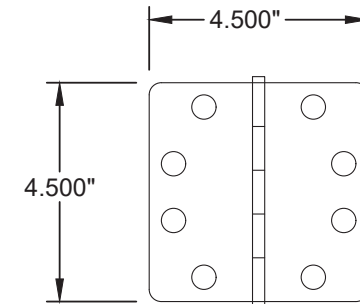
② HORIZONTAL MULL
0.075" TYP. WALL THICKNESS



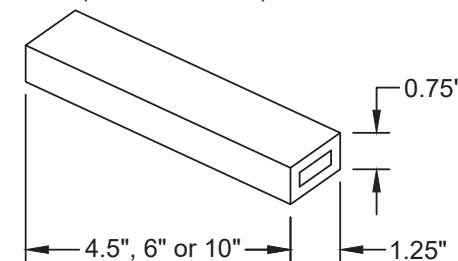
⑦ ASTRAGAL
NA TYP. WALL THICKNESS



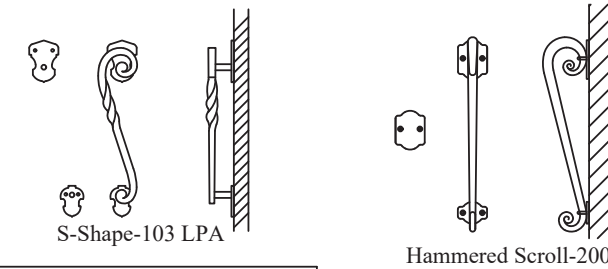
⑨ HINGE
0.134 TYP. WALL THICKNESS



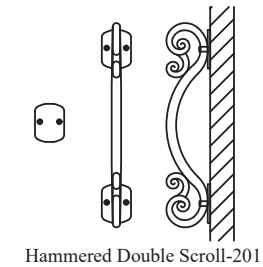
⑱ "L" BRACKET STIFFNER
0.250" TYP. WALL THICKNESS
(4.5", 6" OR 10")



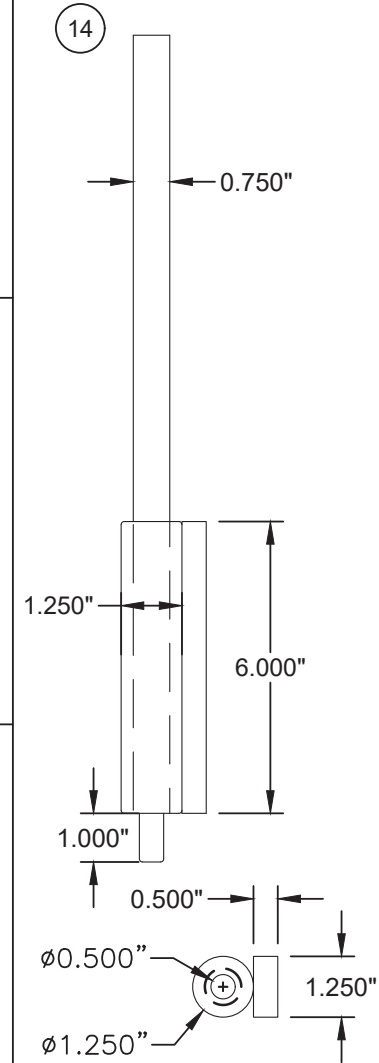
⑳ OPTIONAL PULL HANDLES



② HORIZONTAL MULL
0.075" TYP. WALL THICKNESS



⑭ SURFACE MOUNTED BOLT



PROJECT NO. 416-0102

CANTERA DOORS & MORE, INC.
1310 RANCH ROAD 620 SOUTH, SUITE B204
AUSTIN, TX 78734

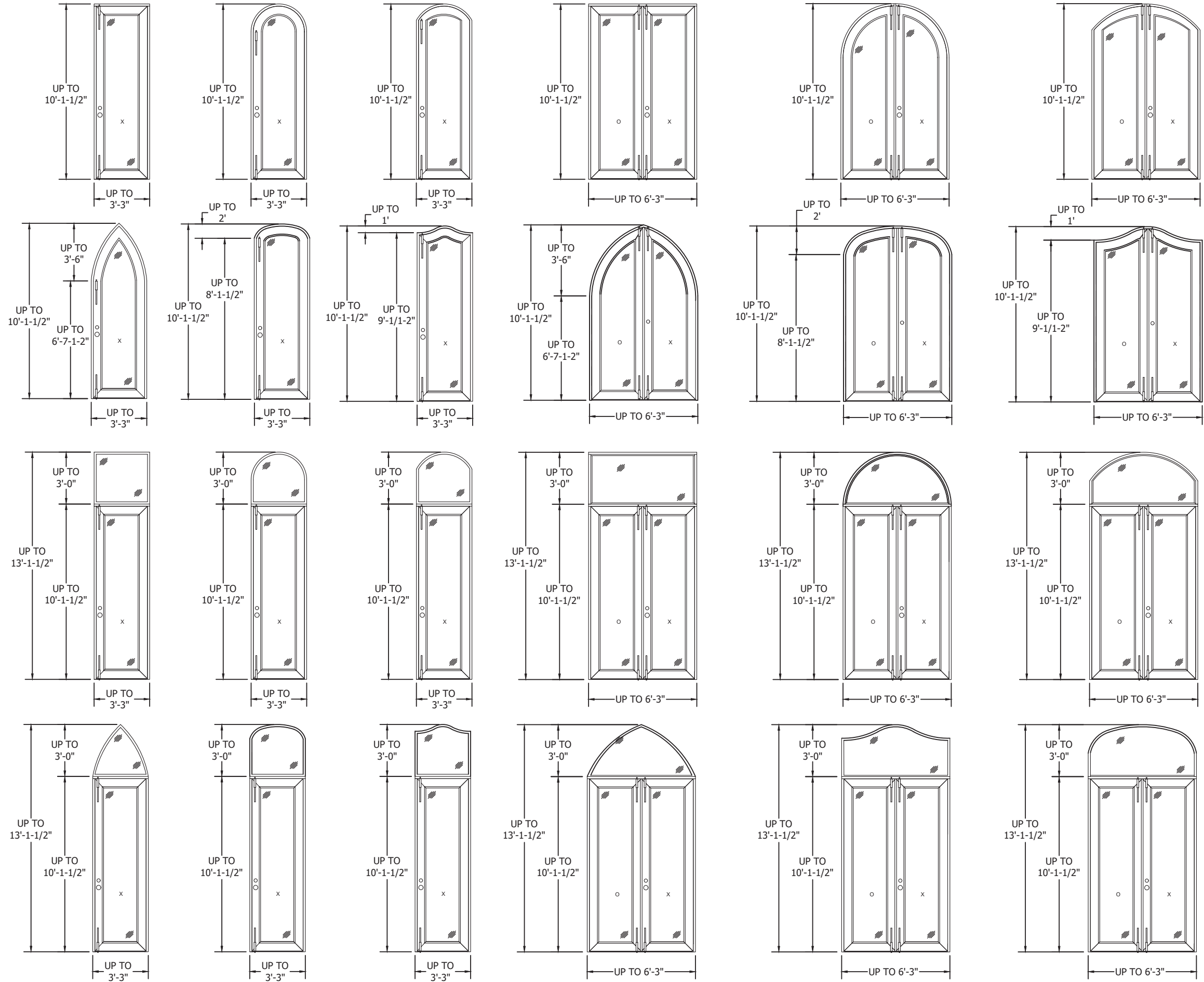
TITLE: STEEL OUTSWING DOORS WITH & WITHOUT TRANSOMS
COMPONENTS AND BILL OF MATERIALS

DATE: 2/26/16
DRAWING NO.: CANT1003
SHEET: 9 OF 11
DRAWN BY: RJA
SCALE: N.T.S.
REV: A

Robert J. Amoroso, P.E.
TEXAS P.E. No. 80817

DATE: 3/15/22
BY: RJA
DESCRIPTION: UPDATE TO 2018 IBC AND 2018 IRC
REV: A

APPROVED CONFIGURATIONS



NOTE: ALL DOOR PANELS REQUIRE SURFACE BOLTS ON LOCK STILE AT HEAD AND SILL.

PROJECT NO. 416-0102	
A	DESCRIPTION
RJA	DATE
UPDATE TO 2018 IBC AND 2018 IRC	3/15/22

CANTERA DOORS & MORE, INC.
 1310 RANCH ROAD 620 SOUTH, SUITE B204
 AUSTIN, TX 78734

TITLE: STEEL OUTSWING DOORS WITH & WITHOUT TRANSOMS
 APPROVED CONFIGURATIONS

DATE:	2/26/16
DRAWING NO.:	CANT1003
DRAWN BY:	RJA
SCALE:	N.T.S.
REV:	A
SHEET:	11 OF 11

PTC PRODUCT DESIGN GROUP, LLC
 P.O. Box 520775
 Longwood, FL 32752-0775
 Phone: 321.690.1788
 Fax: 321.690.1789
 Texas Registration No. F-13740
 Email: info@ptdc-corp.com

Robert J. Amoruso, P.E.
 TEXAS P.E. No. 80817