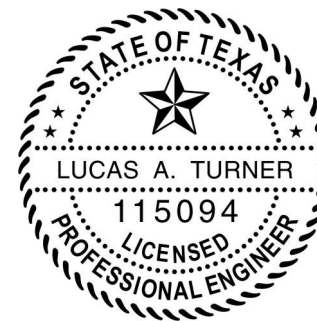


HEAD/SILL ANCHORS AT 2-1/2" FROM DLO EDGE REQ'D ON EACH SIDE OF ALL MULLS, FOR ALL SUBSTRATE TYPES. ADDITIONAL ANCHORS AT 5-1/2" FROM DLO EDGE REQUIRED AT EACH SIDE OF CORNER MULLS FOR ALL SUBSTRATE TYPES. CIRCLED ANCHORS SHOWN IN ELEVATION ARE REQUIRED AT 5-1/2" FROM DLO EDGE ON EACH SIDE OF EACH MULL FOR WOOD SUBSTRATES ONLY WHEN WINDOW DIMENSION HEIGHTS ARE GREATER THAN 60".

ALL GLAZING TO BE 1" I.G. CONSISTING OF 1/4" TEMPERED + 1/2" AIRSPACE + 1/4" TEMPERED WITH 1/2" MINIMUM ENGAGEMENT INTO MULLS (GLASS EDGE TO MULL DLO EDGE)

TYP. EXTERIOR ELEVATION
DESIGN PRESSURES +/- 40 PSF



ZZ

10/11/2016

LUCAS A. TURNER, P.E.
TX PE # 115094
TURNER ENGINEERING &
CONSULTING, INC.
(TX REG. # F-18075)
1239 JABARA AVE.
NORTH PORT, FL 34288

- GENERAL NOTES:**
1. THIS PRODUCT HAS BEEN TESTED TO ASTM E 283, ASTM E 330, ASTM E 331, ASTM E 547, AND AAMA 501.11/4/5/7, AND MEETS THE REQUIREMENTS OF THE 2006 INTERNATIONAL BUILDING CODE AND INTERNATIONAL RESIDENTIAL CODE, WITH 2006 TEXAS REVISIONS EFFECTIVE JANUARY 1, 2008.
 2. THIS PRODUCT IS NON-IMPACT RESISTANT AND REQUIRES THE USE OF SHUTTERS IN WINDBORNE DEBRIS REGIONS.
 3. THIS PRODUCT MAY BE INSTALLED IN INFINITE WIDTHS PROVIDED THE MAXIMUM VERTICAL ON-CENTER AND DLO WIDTHS ARE NOT EXCEEDED.
 4. THE DESIGN PRESSURE RATINGS OF THIS PRODUCT ON THIS SHEET ARE AS LIMITED BY ASTM E-1300 02/04 GLASS TABLES, WATER PERFORMANCE, AND TESTED PRESSURES.
 5. SEALING AND FLASHING STRATEGIES FOR OVERALL WATER PERFORMANCE OF INSTALLED PRODUCTS SHALL BE IN ACCORDANCE WITH MANUFACTURER'S PUBLISHED INSTRUCTIONS AND ARE THE RESPONSIBILITY OF OTHERS.
 6. THE 4/3 ALLOWABLE STRESS INCREASE HAS NOT BEEN USED IN THE ANCHOR ANALYSIS FOR THIS SYSTEM. THE 1.6 Cd FACTOR WAS USED IN THE ANALYSIS OF WOOD SUBSTRATE ONLY.
 7. STRUCTURAL SUITABILITY OF THE OPENING TO RECEIVE LOADS IMPARTED FROM THIS PRODUCT TO BE VERIFIED BY THE DESIGN PROFESSIONAL FOR EACH PROJECT. BUCKING, OPENINGS & BUCKING FASTENERS MUST BE PROPERLY DESIGNED & INSTALLED TO TRANSFER WIND LOADS TO THE STRUCTURE.
 8. DISSIMILAR MATERIALS THAT COME INTO CONTACT, INCLUDING BUT NOT LIMITED TO FASTENERS IN PRESSURE TREATED WOOD, SHALL BE COATED OR OTHERWISE PROTECTED PER FBC TO PREVENT GALVANIC REACTIONS.
 9. INSTALLATIONS SHALL BE IN ACCORDANCE WITH THESE DRAWINGS UNLESS OTHERWISE APPROVED BY A TEXAS LICENSED DESIGN PROFESSIONAL.
 10. FOR INTERNAL JOINERY DETAILS NOT SHOWN IN THESE DRAWINGS, SEE MANUFACTURER'S PUBLISHED INSTALLATION INSTRUCTIONS.

TUBELITE
SERIES 900RW
THERMAL RIBBON WINDOW

3666 WALKER RIDGE DRIVE N.W.
WALKER, MICHIGAN 49544
PH: 800.866.2227
FAX: 616.301.0008
WEB SITE: WWW.TUBELITEINC.COM

TUBELITE
DEPENDABLE
LEADERS IN ECO-EFFICIENT STOREFRONT
CURTAINWALL AND ENTRANCE SYSTEMS

REVISION HISTORY:	
REV	DESCRIPTION
0	ORIGINAL RELEASE

DATE:	08.22.16
DRAWING NUMBER:	FPA-900RW
DRAWN:	
FINAL REVIEW:	
SCALE:	N.T.S.
REVISION:	0
SHEET NAME:	NOTES, ELEVATION
SHEET:	1 OF 4

**TUBELITE
SERIES 900RW
THERMAL RIBBON WINDOW**

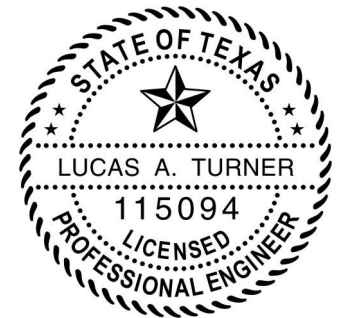
3066 WALKER RIDGE DRIVE N.W.
WALKER, MICHIGAN 49544
PH: 800.866.2227
FAX: 616.301.0008
WEB SITE: WWW.TUBELITEINC.COM

TUBELITE®
DEPENDABLE
LEADERS IN ECO-EFFICIENT STOREFRONT
CURTAINWALL AND ENTRANCE SYSTEMS

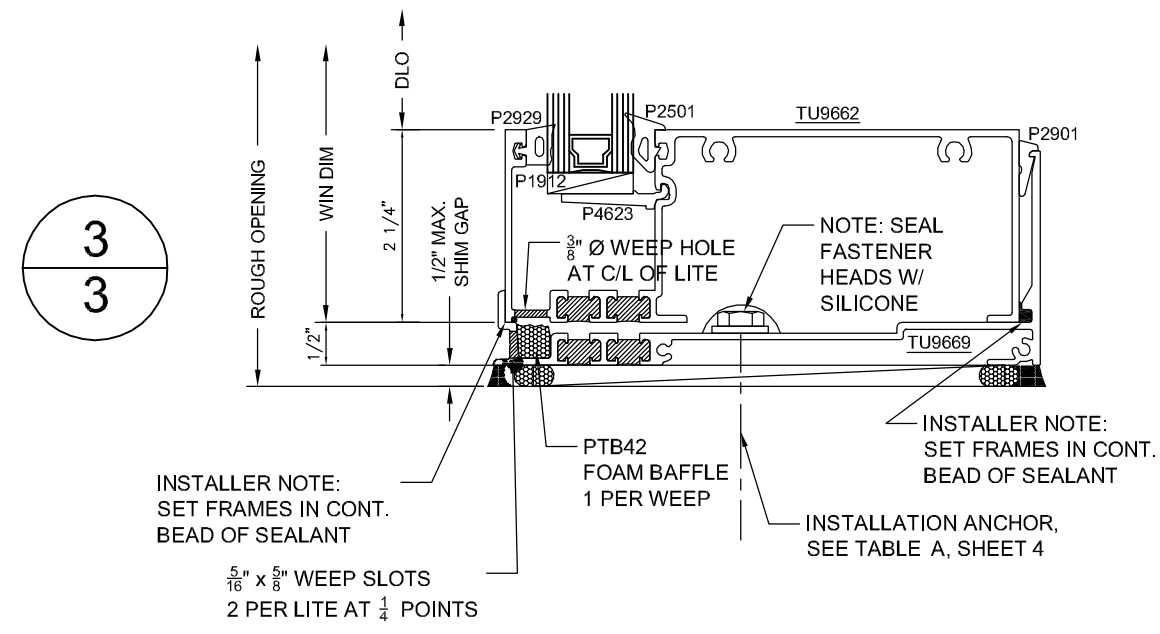
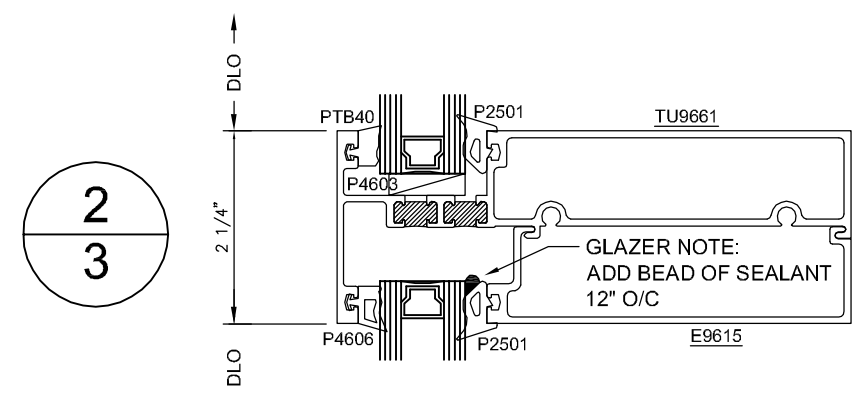
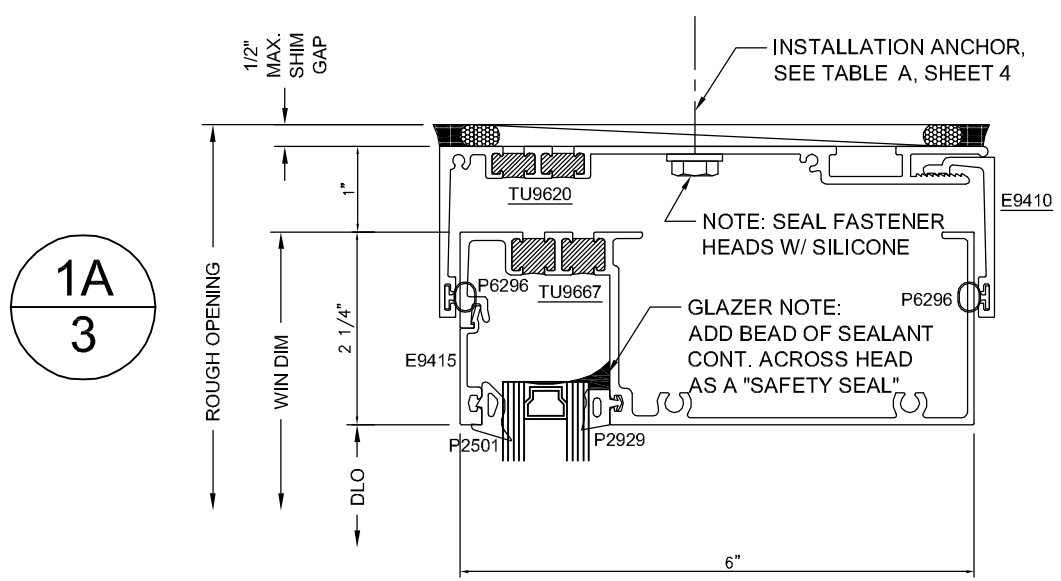
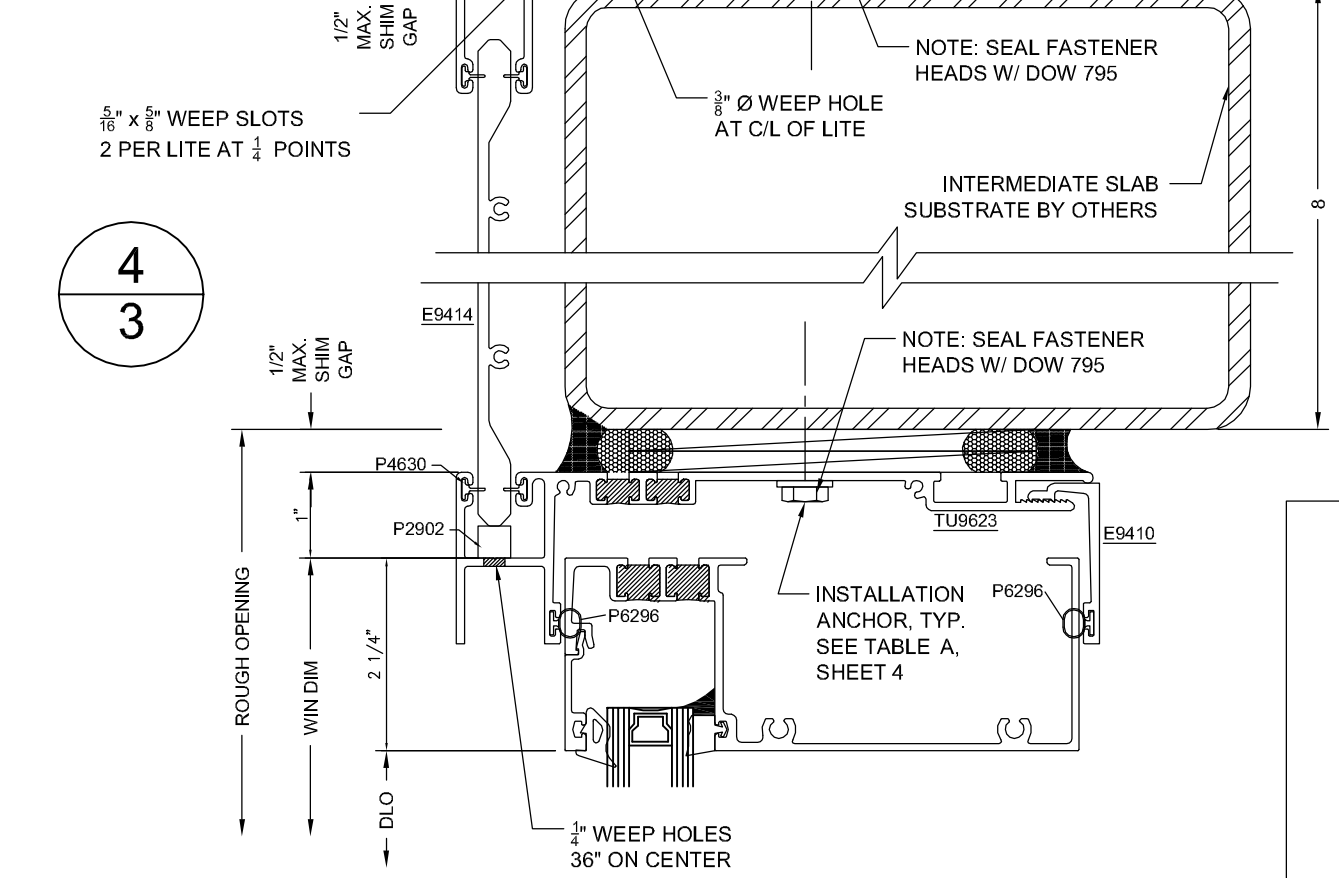
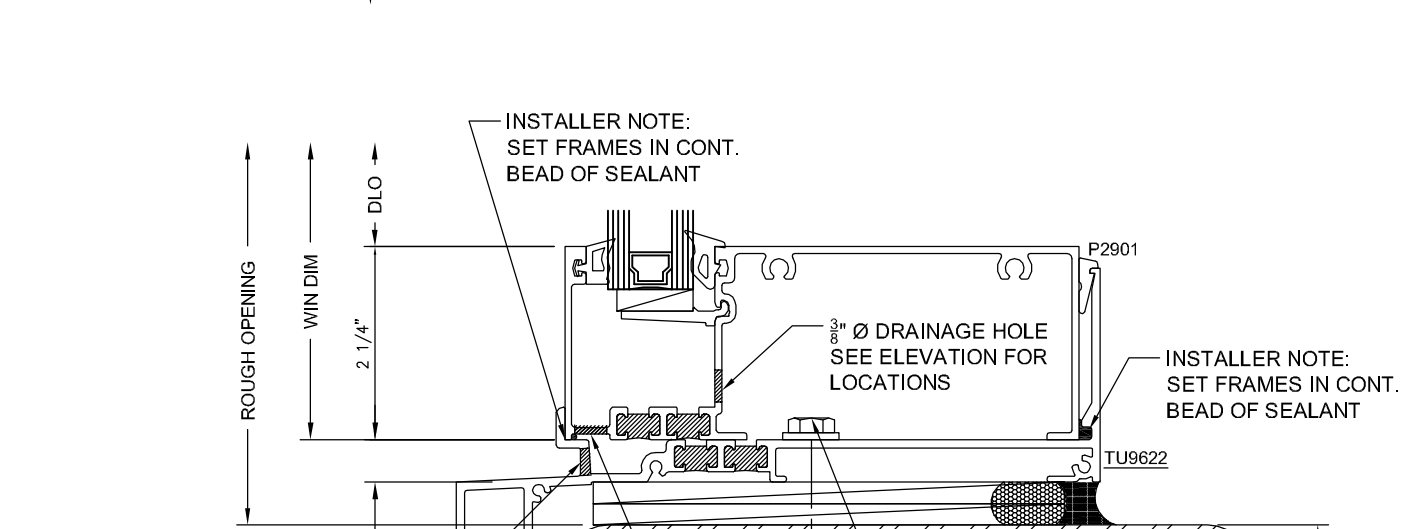
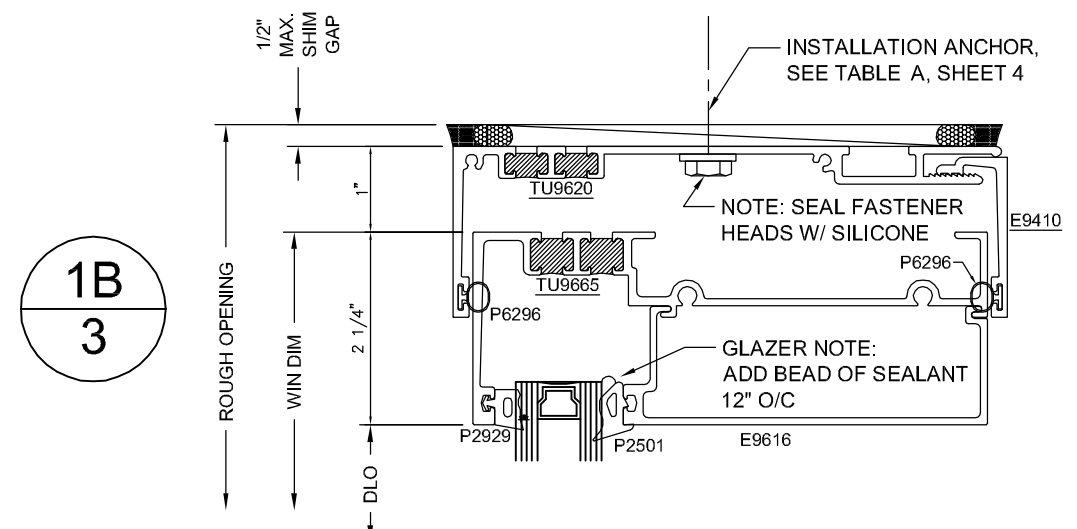
REVISION HISTORY:

REV	DATE	DRAWN	DESCRIPTION
0	8.22.16	LT	ORIGINAL RELEASE

DATE:	08.22.16
DRAWING NUMBER:	FPA-900RW
DRAWN:	
FINAL REVIEW:	
SCALE:	N.T.S.
REVISION:	0
SHEET NAME:	SECTION VIEWS
SHEET:	2 OF 4



LT
10/11/2016
LUCAS A. TURNER, P.E.
TX PE # 115094
TURNER ENGINEERING &
CONSULTING, INC.
(TX REG. # F-18075)
1239 JABARA AVE.
NORTH PORT, FL 34288



NOTE: ALL TUBELITE EXTRUSIONS ARE ALUMINUM 6063-T6, AND ALL GLAZING GASKETS AND SETTING BLOCKS ARE EPDM. ALL GLAZING MAY BE FROM INSIDE OR OUTSIDE, I.E. INTERIOR AND EXTERIOR GASKETS AS SHOWN IN DETAILS MAY BE REVERSED.

TUBELITE
SERIES 900RW
THERMAL RIBBON WINDOW

3066 WALKER RIDGE DRIVE N.W.
WALKER, MICHIGAN 49544
PH: 800.866.2227
FX: 616.301.0008
WEB SITE: WWW.TUBELITEINC.COM

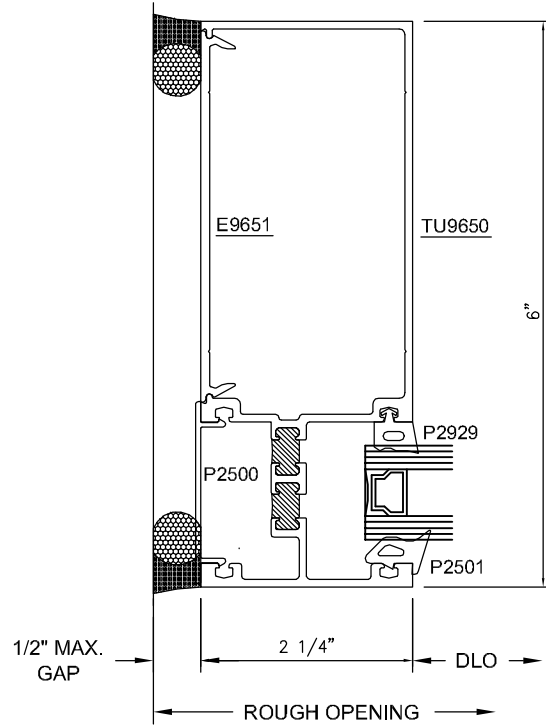
TUBELITE
DEPENDABLE
LEADERS IN ECO-EFFICIENT STOREFRONT
CURTAINWALL AND ENTRANCE SYSTEMS

REVISION HISTORY:

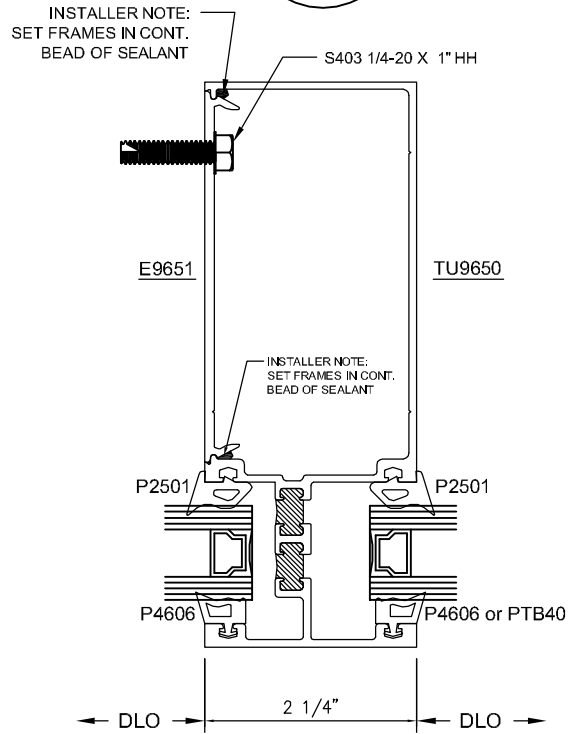
REV	DATE	DRAWN	DESCRIPTION
0	8.22.16	LT	ORIGINAL RELEASE

DATE:	08.22.16
DRAWING NUMBER:	FPA-900RW
DRAWN:	
FINAL REVIEW:	
SCALE:	N.T.S.
REVISION:	0
SHEET NAME:	SECTION VIEWS
SHEET:	3 OF 4

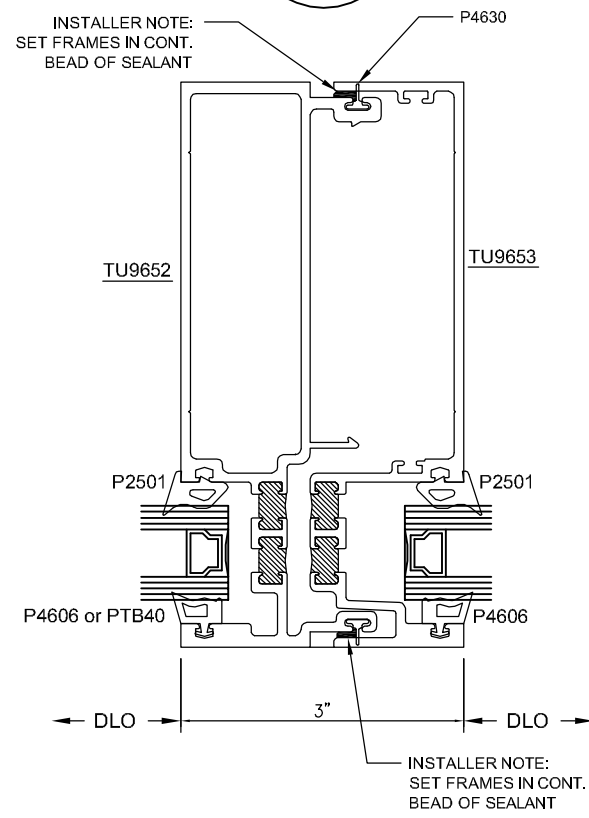
1
4



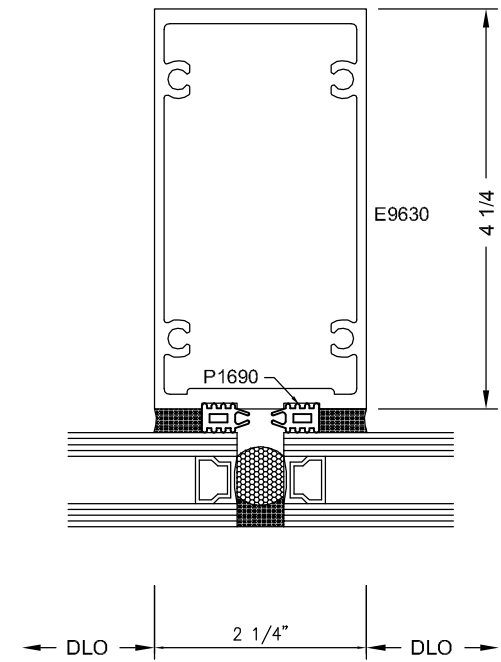
2
4



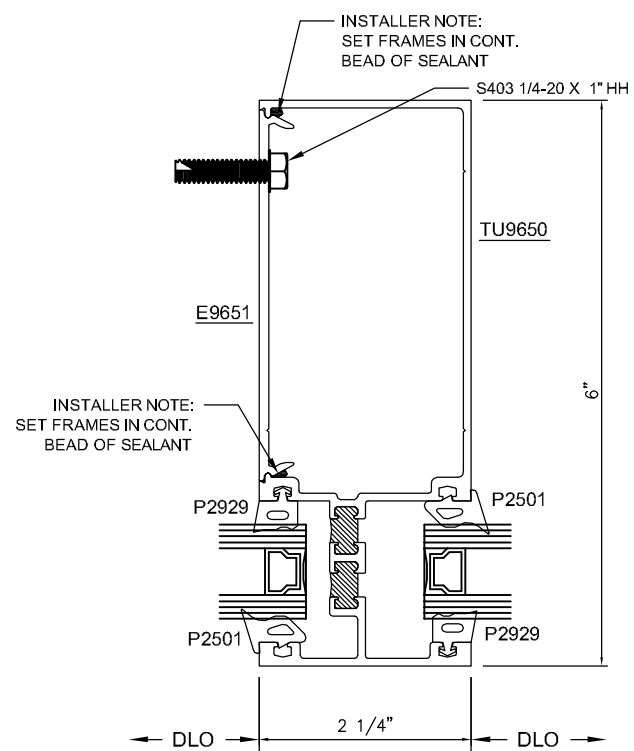
3
4



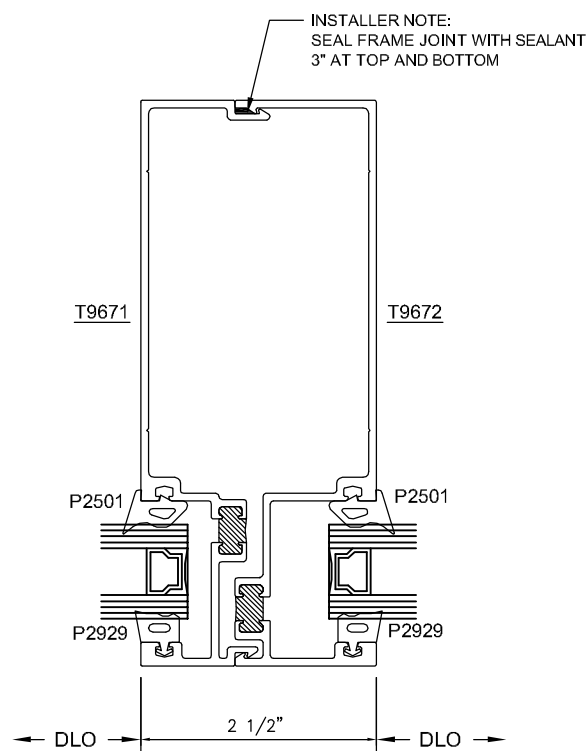
4
4



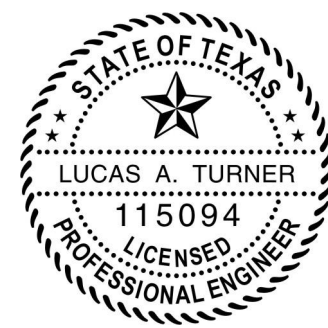
5
4



6
4



NOTE: ALL TUBELITE EXTRUSIONS ARE ALUMINUM 6063-T6, AND ALL GLAZING GASKETS AND SETTING BLOCKS ARE EPDM. ALL GLAZING MAY BE FROM INSIDE OR OUTSIDE, I.E. INTERIOR AND EXTERIOR GASKETS AS SHOWN IN DETAILS MAY BE REVERSED.



27
10/11/2016
LUCAS A. TURNER, P.E.
TX PE # 115094
TURNER ENGINEERING &
CONSULTING, INC.
(TX REG. # F-18075)
1239 JABARA AVE.
NORTH PORT, FL 34288

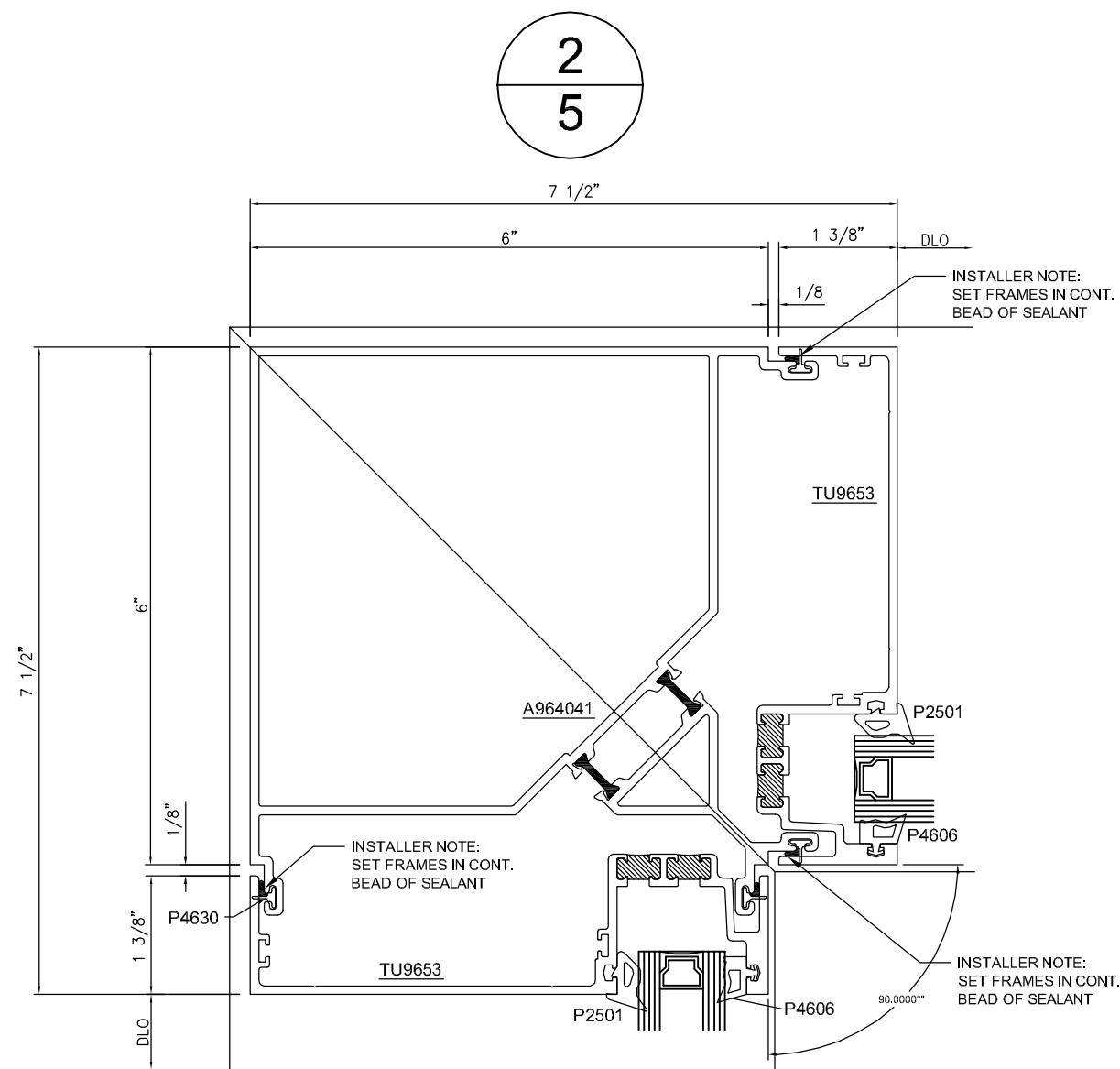
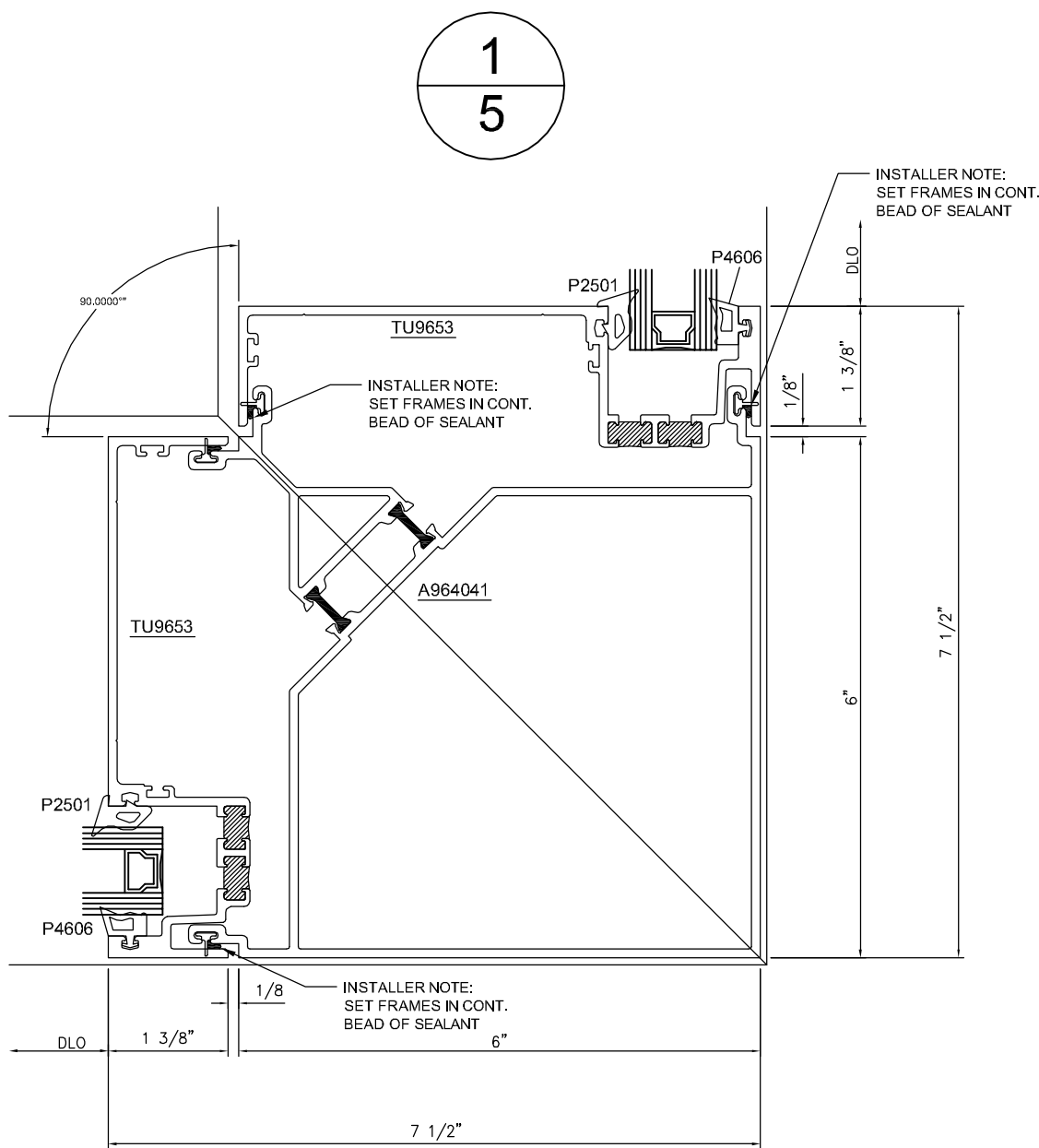
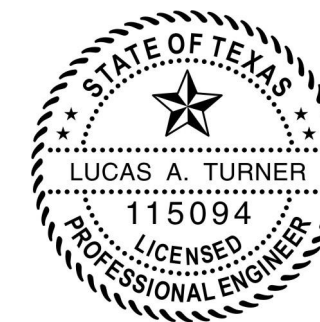


TABLE A. QUALIFIED INSTALLATION ANCHOR INFORMATION

ID	SUBSTRATE	ANCHOR	MIN. EMBEDMENT	MIN. EDGE DISTANCE
A	SOLID UNCRACKED CONCRETE (3000 PSI MIN)	3/8" HILTI KWIK BOLT 3 CARBON OR STAINLESS STEEL	1 5/8"	2 1/2"
B	SOLID UNCRACKED CONCRETE (4000 PSI MIN)	3/8" POWERS WEDGE BOLT CARBON STEEL	2"	4 1/2"
C	SOUTHERN PINE WOOD (G=0.55 MIN)	3/8" GRADE 5 LAG SCREW	3"	2"
D	1/4" ALUM. 6063-T5 MIN. OR 1/4" STEEL 36 KSI MIN.	5/16-24 ELCO DRIL-FLEX OR HILTI KWIK-FLEX	FULL	3/4"

NOTE: ALL TUBELITE EXTRUSIONS ARE ALUMINUM 6063-T6, AND ALL GLAZING GASKETS AND SETTING BLOCKS ARE EPDM. ALL GLAZING MAY BE FROM INSIDE OR OUTSIDE, I.E. INTERIOR AND EXTERIOR GASKETS AS SHOWN IN DETAILS MAY BE REVERSED.

ANCHORAGE NOTES:
 1. SHIMS BY OTHERS SHALL BE LOAD-BEARING (PLASTIC OR METALLIC) AND CAPABLE OF TRANSFERRING APPLIED LOADS FROM THE PRODUCTS TO THE OPENING SUBSTRATES.
 2. SHIM EACH ANCHOR LOCATION WHERE GAP GREATER THAN 1/16" EXISTS BETWEEN PRODUCT FRAME AND OPENING SUBSTRATE.
 3. SPECIFIED EMBEDMENT TO BASE MATERIAL SHALL BE BEYOND WALL FINISH OR STUCCO.
 4. ALL BACKER ROD AND SEALANT SHOWN IN DETAILS SHEETS 2 AND 3 IS BY INSTALLER



10/11/2016
 LUCAS A. TURNER, P.E.
 TX PE # 115094
 TURNER ENGINEERING & CONSULTING, INC.
 (TX REG. # F-18075)
 1239 JABARA AVE.
 NORTH PORT, FL 34288

TUBELITE
 SERIES 900RW
 THERMAL RIBBON WINDOW

3066 WALKER RIDGE DRIVE N.W.
 PALMER, MICHIGAN 49644
 PH: 800.866.2227
 FX: 616.301.0008
 WEB SITE: WWW.TUBELITEINC.COM

TUBELITE
 DEPENDABLE
 LEADERS IN ECO-EFFICIENT STOREFRONT CURTAINWALL AND ENTRANCE SYSTEMS

REVISION HISTORY:

REV	DATE	DESCRIPTION
0	8.22.16	ORIGINAL RELEASE

DATE: 08.22.16
 DRAWING NUMBER: FPA-900RW
 DRAWN:
 FINAL REVIEW:
 SCALE: N.T.S.
 REVISION: 0
 SHEET NAME: SECTION VIEWS
 SHEET: 4 OF 4