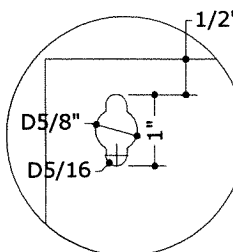
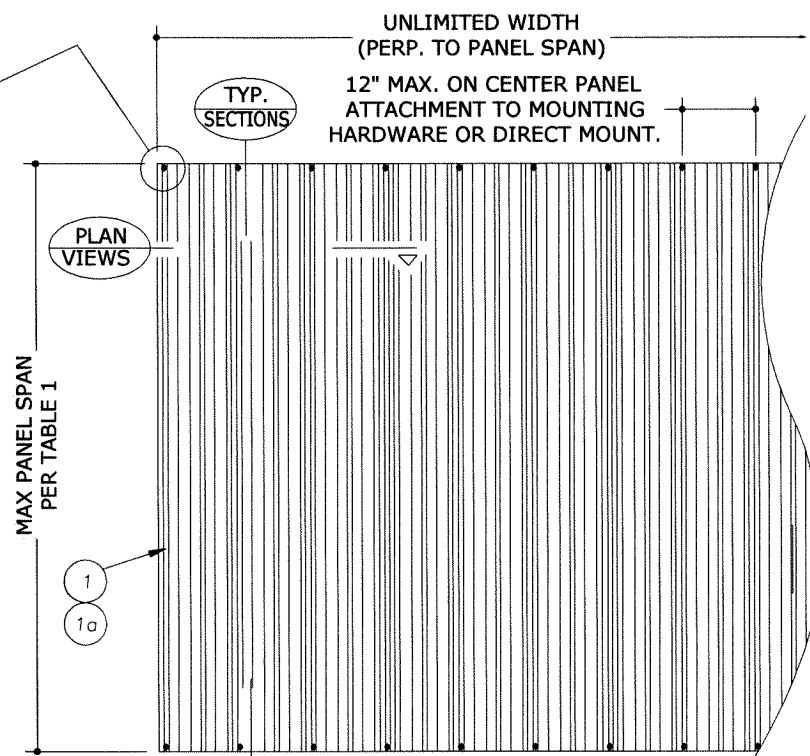


# 0.050" ALUMINUM STORM PANEL



KEYHOLE PUNCH DETAIL  
ALTERNATIVE HOLE DIA. OF  
5/8" IS ACCEPTABLE.



1  
1  
TYPICAL ELEVATION WITH  
ALUMINUM PANELS ONLY

N.T.S. EXTERIOR ELEV

NOTE: TOP MAY BE SLOPED OR  
RADIUSED TO MATCH GEOMETRY OF  
OPENING. MOUNTING HARDWARE  
MUST BE ROLL-FORMED TO THE  
RADIUS; NO NOTCHING OF  
MOUNTING HARDWARE TO ACHIEVE  
SHAPES IS ALLOWED.



TABLE 1 ALLOWABLE SPAN SCHEDULE (WITH ALUMINUM PANELS ONLY)		
PANEL SPAN	ALLOWABLE DESIGN PRESSURE	
144"	+ 33.0 PSF	- 35.0 PSF
138"	+ 35.9 PSF	- 38.1 PSF
132"	+ 39.3 PSF	- 41.7 PSF
126"	+ 43.1 PSF	- 45.7 PSF
120"	+ 47.5 PSF	- 50.4 PSF
114"	+ 52.7 PSF	- 55.8 PSF
108"	+ 58.7 PSF	- 62.2 PSF
102"	+ 65.8 PSF	- 69.8 PSF
96"	+ 74.3 PSF	- 75.0 PSF
90"	+ 80.0 PSF	- 80.0 PSF
84"	+ 85.7 PSF	- 85.7 PSF
78"	+ 92.3 PSF	- 92.3 PSF
72"	+ 100.0 PSF	- 100.0 PSF
66"	+ 109.1 PSF	- 109.1 PSF
60"	+ 120.0 PSF	- 120.0 PSF

**TABLE 1 NOTES:**

- LINEAR INTERPOLATION BETWEEN SHUTTER SPANS IS NOT PERMITTED. FOR SPANS BETWEEN THOSE INDICATED ABOVE, THE DESIGN PRESSURES FOR THE NEXT HIGHER SPAN SHALL BE USED.
- DESIGN PRESSURES NOTED IN TABLE 1 APPLY TO ALL MOUNTING AND ANCHORAGE CONDITIONS AND SHALL NOT BE EXCEEDED.

## GENERAL NOTES

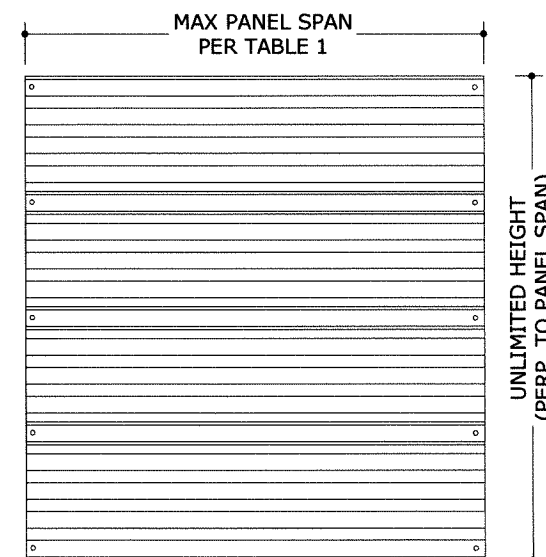
1. THE SYSTEM DESCRIBED HEREIN HAS BEEN DESIGNED AND TESTED IN ACCORDANCE WITH THE INTERNATIONAL BUILDING CODE (2018) AND THE INTERNATIONAL RESIDENTIAL CODE (IRC) FOR USE IN ACCORDANCE WITH THE TEXAS DEPARTMENT OF INSURANCE.
2. NO 33-1/3% INCREASE IN ALLOWABLE STRESS HAS BEEN USED IN THE DESIGN OF THIS SYSTEM. WIND LOAD DURATION FACTOR Cd=1.6 HAS BEEN USED FOR WOOD ANCHOR DESIGN.
3. POSITIVE AND NEGATIVE DESIGN PRESSURES CALCULATED FOR USE WITH THIS SYSTEM SHALL BE DETERMINED PER SEPARATE ENGINEERING IN ACCORDANCE WITH THE GOVERNING CODE. PRESSURE REQUIREMENTS AS DETERMINED IN ACCORDANCE WITH ASCE 7 AND CHAPTER 1609 OF THE INTERNATIONAL BUILDING CODE SHALL BE LESS THAN OR EQUAL TO THE POSITIVE OR NEGATIVE DESIGN PRESSURE CAPACITY VALUES LISTED HEREIN FOR ANY ASSEMBLY AS SHOWN.
4. DESIGN PRESSURES NOTED HEREIN ARE BASED ON MAXIMUM TESTED PRESSURES DIVIDED BY A 1.5 SAFETY FACTOR.
5. THIS SYSTEM HAS BEEN DESIGNED WITH NO SEPARATION FROM GLAZING REQUIRED FOR WIND ZONES 1-4, IN ACCORDANCE WITH ASTM E1996. IT IS ACCEPTABLE BY CODE UNLESS OPTIONAL CRITERIA IS INDEPENDENTLY ADOPTED BY THE AUTHORITY HAVING JURISDICTION.
6. THE SYSTEM DETAILED HEREIN IS GENERIC AND DOES NOT PROVIDE INFORMATION FOR A SPECIFIC SITE. FOR SITE CONDITIONS DIFFERENT FROM THE CONDITIONS DETAILED HEREIN, A LICENSED ENGINEER OR REGISTERED ARCHITECT SHALL PREPARE SITE SPECIFIC DOCUMENTS FOR USE IN CONJUNCTION WITH THIS DOCUMENT.
7. THESE INSTALLATION INSTRUCTIONS ARE PART OF A PRODUCT APPROVAL EVALUATION AND SHALL ONLY BE USED IN CONJUNCTION WITH THE EVALUATION REPORT SUBMITTED FOR THE SAME PRODUCT APPROVAL. USE OF THESE APPROVAL DOCUMENTS SHALL COMPLY WITH CHAPTER 61G15 OF THE FLORIDA ADMINISTRATIVE CODE.
8. PERMIT HOLDER SHALL VERIFY THE ADEQUACY OF THE EXISTING STRUCTURE TO WITHSTAND SUPERIMPOSED LOADS. BRICK VENEER PER ASTM C62 (BY OTHERS) SHALL BE ANCHORED PROPERLY TO TRANSFER ANY APPLICABLE LOADS TO THE EXISTING HOST STRUCTURE.
9. ALUMINUM STORM PANELS SHALL BE 5052-H32 OR 3004-H34 ALUMINUM ALLOY, TESTED THICKNESS 0.0495".
10. ALL POLYCARBONATE PANELS SHALL BE MANUFACTURED BY TRANSPARENT PROTECTION SYSTEMS, Inc.
11. ALL POLYCARBONATE PANELS SHALL BE EXTRUDED WITH THICKNESS t=0.100" (±0.010") AND SHALL BE MANUFACTURED FROM 100% SYNTHETIC THERMOPLASTIC POLYMER RESIN (UV STABILIZED). TYPICAL TENSILE STRENGTH Fy=8,908 KSI, FLEXURAL STRENGTH Fbv=12.90 KSI, & FLEXURAL MODULUS IS 328.7 KSI
12. ALL EXTRUSIONS SHALL BE 6063-T6 ALUMINUM ALLOY, UNLESS NOTED OTHERWISE. ALL TOLERANCES SHALL BE IN ACCORDANCE WITH ADM 2015.
13. TOP & BOTTOM DETAILS SHOWN MAY BE INTERCHANGED AS FIELD CONDITIONS DICTATE. PANELS MAY BE MOUNTED VERTICALLY OR HORIZONTALLY AS APPLICABLE.
14. PANELS SHALL BE PERMANENTLY LABELED WITH LABELS SPACED NOT MORE THAN EVERY THREE LINEAL FEET PER PANEL AND SHALL FACE THE EXTERIOR AND CONTAIN AT LEAST THE FOLLOWING:

**TOWN & COUNTRY INDUSTRIES**  
FT. LAUDERDALE, FL  
ASTM E330, E1886, & E1996 9 LB MISSILE LEVEL D  
PRODUCT APPROVAL NUMBER

15. ALL BOLTS & WASHERS SHALL BE ZINC COATED STEEL, GALVANIZED STEEL, STAINLESS STEEL, OR 2024-T6 ALUMINUM ALLOY WITH A MINIMUM TENSILE YIELD STRENGTH OF 33 KSI, UNLESS OTHERWISE NOTED HEREIN.
16. CONTRACTOR IS RESPONSIBLE TO INSULATE OR PROTECT ALL MEMBERS FROM DISSIMILAR MATERIALS TO PREVENT ELECTROLYSIS.
17. SEALANT SHALL BE USED ON ANCHORS OR TRACKS WHEREVER WATER SEEPAGE IS POSSIBLE.

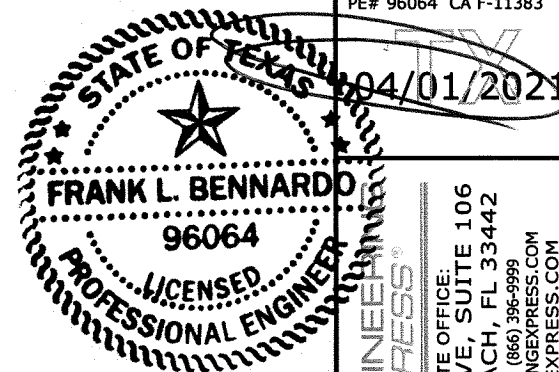
## ANCHOR NOTES:

1. ANCHORS SHALL BE INSTALLED IN ACCORDANCE WITH MANUFACTURERS' RECOMMENDATIONS.
2. WHERE ANCHORS FASTEN TO NARROW FACE OF STUD FRAMING, ANCHOR SHALL BE LOCATED IN CENTER OF NOMINAL 2x (MIN) WOOD STUD (i.e. 3/4" EDGE DISTANCE IS ACCEPTABLE FOR ANCHORS TO WOOD FRAMING).
3. ALL CONCRETE ANCHORS SHALL BE INSTALLED TO NON-CRACKED CONCRETE ONLY.
4. MINIMUM EMBEDMENT AND EDGE DISTANCE SHALL BE AS NOTED IN ANCHOR SCHEDULE. MINIMUM EMBEDMENT AND EDGE DISTANCE EXCLUDES STUCCO, FOAM, BRICK, AND OTHER WALL FINISHES.
5. ANCHOR SCHEDULE APPLIES TO ALL PRODUCTS CERTIFIED HEREIN, BUT ONLY PROVIDES MAXIMUM ALLOWABLE SPANS AND PRESSURES INDICATED IN SPAN SCHEDULE(S) SHALL APPLY.
6. WHERE EXISTING STRUCTURE IS WOOD FRAMING, EXISTING CONDITIONS MAY VARY. FIELD VERIFY THAT FASTENERS ARE INTO ADEQUATE WOOD FRAMING MEMBERS, NOT INTO PLYWOOD.
11. MACHINE SCREWS SHALL HAVE MINIMUM OF 1/2" ENGAGEMENT OF THREADS IN BASE ANCHOR AND MAY HAVE EITHER A PAN HEAD, TRUSS HEAD, OR WAFER HEAD ("SIDEWALK BOLT") U.N.O.
12. [Hatched pattern] DESIGNATES ANCHOR CONDITIONS WHICH ARE NOT ACCEPTABLE FOR USE.
13. \* DESIGNATES ANCHORS WHICH ARE REMOVABLE AND MAY BE USED FOR DIRECT MOUNT INSTALLATIONS.
14. WHEN ANCHORING TO HOLLOW BLOCK, SDS DRILLS SHOULD NOT BE USED TO DRILL INTO HOLLOW BLOCK, NOR SHOULD IMPACT DRILLS BE USED TO INSTALL CONCRETE SCREWS TO HOLLOW BLOCK



2  
1  
OPTIONAL HORIZONTAL MOUNT

N.T.S. EXTERIOR ELEV



FRANK L. BENNARDO  
96064  
LICENSED PROFESSIONAL ENGINEER  
ENGINEERINGEXPRESS  
CORPORATE OFFICE:  
160 SW 12th AVE, SUITE 106  
DEERFIELD BEACH, FL 33442  
(954) 354-0660 | (866) 396-9999  
TEAM@ENGINEERINGEXPRESS.COM  
ENGINEERINGEXPRESS.COM

**Town & Country**  
INDUSTRIES  
Wholesale Aluminum and Building Products  
A Division of REC Supply Co., Inc.  
400 WEST MCNAB ROAD  
FT. LAUDERDALE, FL 33309

REMARKS	DRWN	CHKD	DATE
INIT ISSUE	KL	FLB	06/03/11
2010 FBC	CSL	KL	12/16/11
CLIENT REVISIONS	KL	FLB	10/25/13
2014 FBC (11-TOM-0003)	RWN	CSL	03/13/15
REV - 2017 FBC	RWN	FLB	07/31/17
2018 IRC UPDATE	CB	RWN	6/17/20

THIS DOCUMENT IS THE PROPERTY OF FRANK L. BENNARDO, P.E. AND SHALL NOT BE REPRODUCED, COPIED, OR TRANSMITTED IN ANY FORM OR BY ANY MEANS, ELECTRONIC OR MECHANICAL, INCLUDING PHOTOCOPYING, RECORDING, OR BY ANY INFORMATION STORAGE AND RETRIEVAL SYSTEM. ANY UNAUTHORIZED USE OF THIS DOCUMENT IS PROHIBITED AND WILL BE PROSECUTED TO THE FULL EXTENT OF THE LAW.

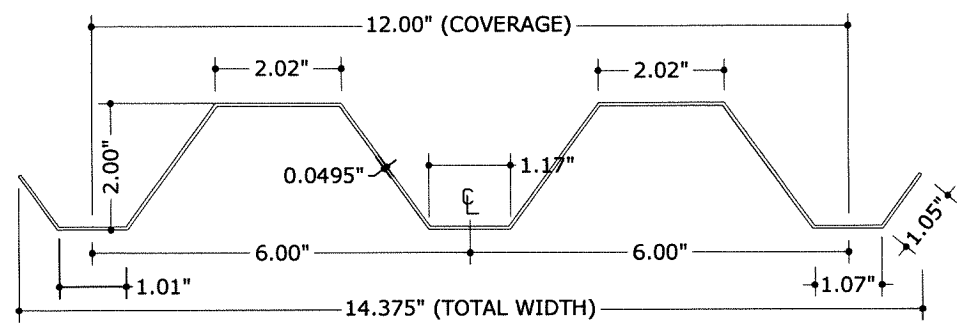
COPYRIGHT FRANK L. BENNARDO P.E.

20-24244.2

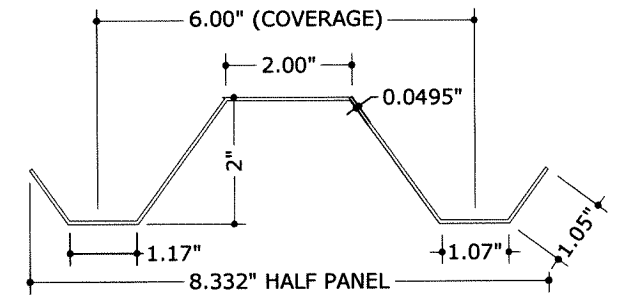
SCALE: -  
PAGE DESCRIPTION:

C:\Users\rickn\Engineering\Express\Production - Documents\Projects\20-24244 Town & Country - TDI Updates\WP12 - SHU-173 050 Alum Storm Panel\20-24244.2b - 050 Alum Storm Panel (TDI).dwg  
04/01/2021 - 9:32am rickn

C:\Users\rickn\Engineering Express\Production - Documents\Projects\20-24244 Town & Country - TDI Updates\WP2 - SHU-173 050 Alum Storm Panel\20-24244.2b - 050 Alum Storm Panel (TDI).dwg  
 04/01/2021 - 9:32am rickn

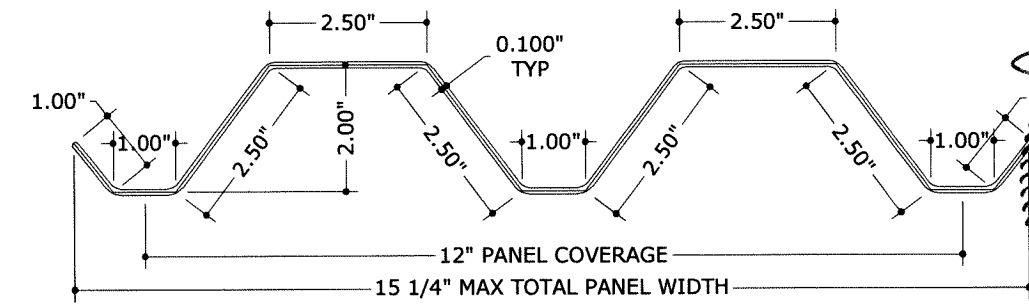


**1 ALUMINUM STORM PANEL**

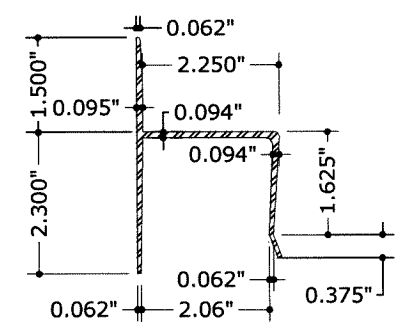


**1a ALUMINUM HALF STORM PANEL**

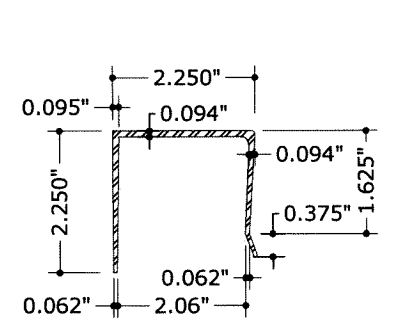
NOTE: HALF STORM PANEL SHALL ONLY BE USED AS AN END PANEL TO CLOSE THE REMAINING OPENING THAT MAY BE LESS THAN FULL PANEL WIDTH



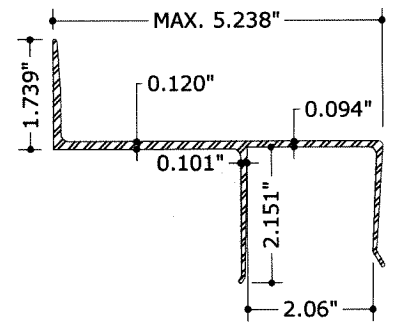
**1b POLYCARBONATE STORM PANEL**



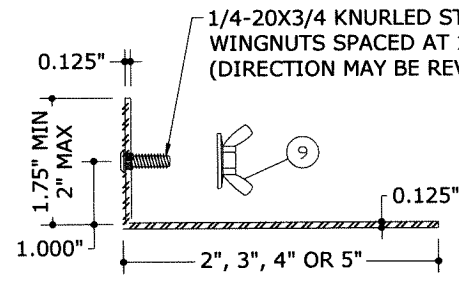
**2 H HEADER**



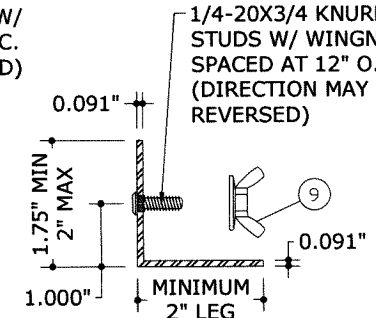
**3 U HEADER**



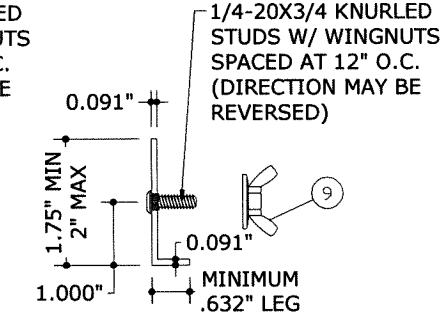
**3a BUILD-OUT U HEADER**



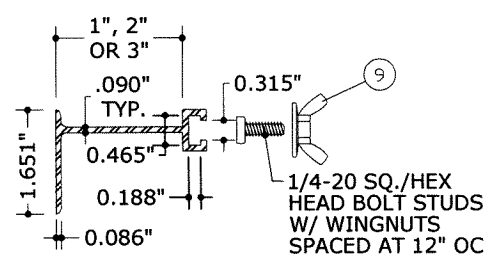
**4 STUD ANGLE**  
SEE COMPONENT NOTES



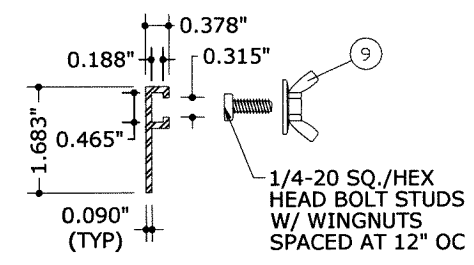
**4a STUD ANGLE**  
SEE COMPONENT NOTES



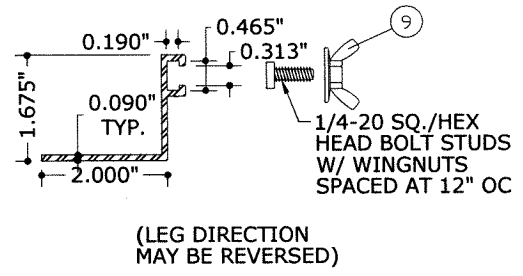
**4b STUD ANGLE**  
SEE COMPONENT NOTES



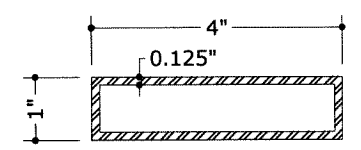
**7 BUILD-OUT F TRACK**



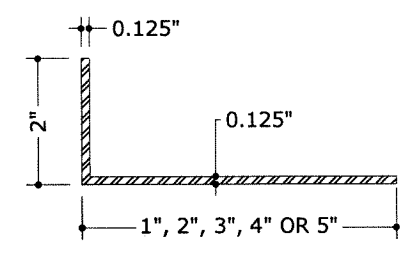
**8 F TRACK**



**8a F ANGLE TRACK**

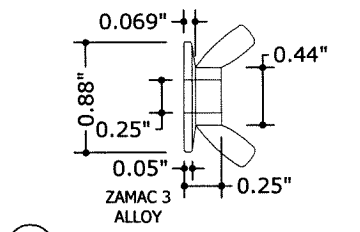


**6 TUBE**

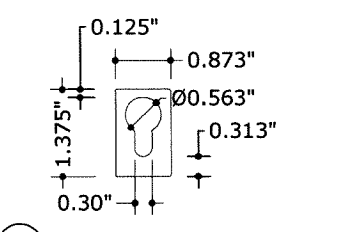


**5 ANGLE**

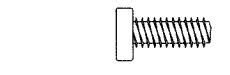
**COMPONENT NOTES**  
 ANCHOR HEADS MUST NOT INTERFERE WITH INSTALLATION OF THE PANEL. THE FIRST AND LAST ANCHOR IN ALL TRACKS SHALL BE INSTALLED WITHIN THE FIRST 3" AND LAST 3", RESPECTIVELY. INSTALL ALL ANCHORS PER THE REQUIREMENTS LISTED IN THE ANCHOR SCHEDULE.



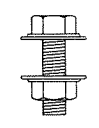
**9 WASHER WINGNUT**  
NON-RECESSED FLAT SURFACE TYPE ONLY



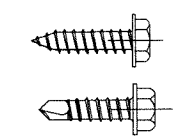
**10 KEYHOLE WASHER**  
20 GA. GALV. STEEL (t=.038")  
GRADE 40 DR 0.050" ALUM ALLOY (3004-H34)



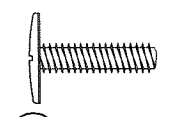
**11 1/4-20 SQ./HEX HEAD BOLT**



**12 1/4-20 316 SS MACHINE BOLT W/NUT**



**13 #14x3/4 316 SS SDS/SMS SCREW**



**14 1/4-20 SIDEWALK BOLT**



**15 1/4-20 TRUSS HEAD BOLT**  
REQUIRES USE OF KEYHOLE WASHER IN DIRECT MOUNT APPLICATIONS

FRANK BENNARDO, PE  
 REGISTERED PROFESSIONAL ENGINEER  
 STATE OF TEXAS  
 04/01/2021  
 FRANK L. BENNARDO  
 LICENSE NO. 96064  
 PROFESSIONAL ENGINEER  
 ENGINEERING EXPRESS, INC.  
 CORPORATE OFFICE  
 160 SW 12th AVE, SUITE 105  
 DEERFIELD BEACH, FL 33442  
 (954) 354-0660 | (866) 369-9999  
 TEAM@ENGINEERINGEXPRESS.COM  
 ENGINEERINGEXPRESS.COM

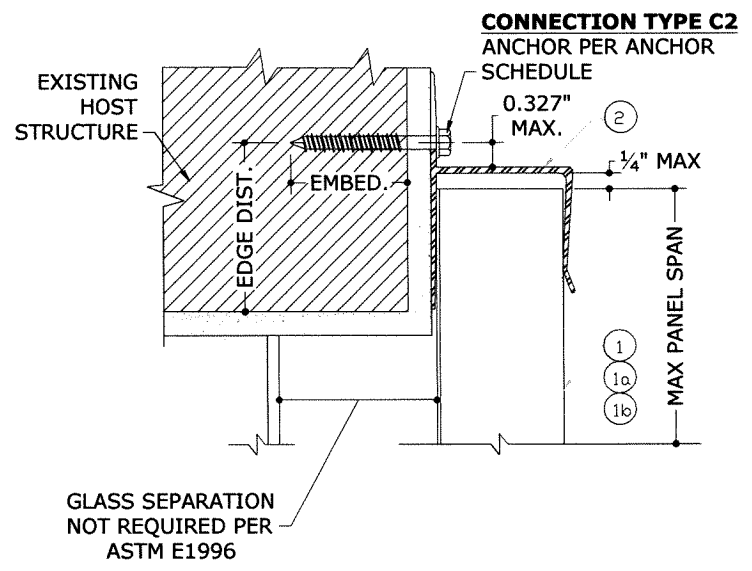
**Town & Country**  
 INDUSTRIES  
 Wholesale Aluminum and Building Products  
 A Division of ABC Supply Co., Inc.  
 400 WEST MCNAB ROAD  
 FT. LAUDERDALE, FL 33309

REMARKS	DRWN	CHKD	DATE
INIT ISSUE	KL	FLB	06/03/11
CLIENT REVISIONS	CSL	KL	12/16/11
2014 FBC (11-TCM-003)	RWN	CSL	10/25/13
REV-2017 FBC	RWN	FLB	03/13/15
2018 IBC UPDATE	CB	RWN	07/31/17
			6/17/20

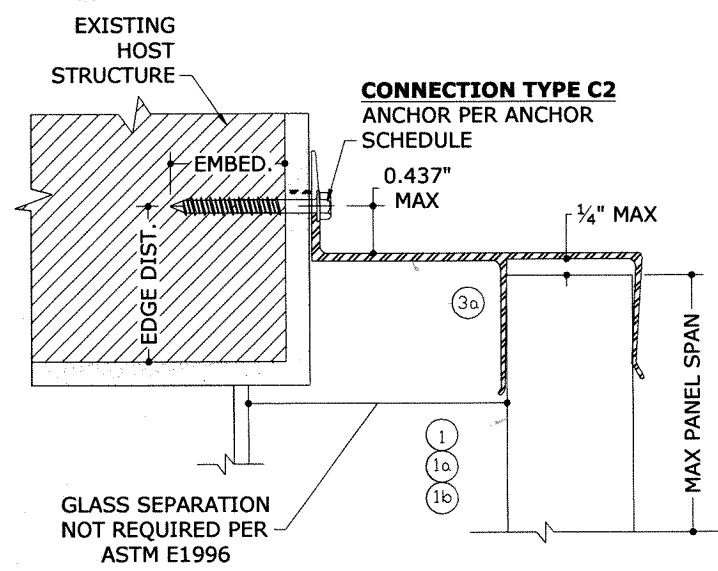
THIS DOCUMENT IS THE PROPERTY OF FRANK L. BENNARDO, P.E. AND SHALL NOT BE REPRODUCED, COPIED, OR TRANSMITTED IN ANY FORM OR BY ANY MEANS, WITHOUT THE WRITTEN PERMISSION OF FRANK L. BENNARDO, P.E. ANY UNAUTHORIZED ALTERATIONS, ADDITIONS, HIGHLIGHTING, OR OTHER MARKINGS TO THIS DOCUMENT ARE NOT PERMITTED AND INVALIDATE OUR CERTIFICATION.

COPYRIGHT FRANK L. BENNARDO P.E.  
**20-24244.2**  
 SCALE: -  
 PAGE DESCRIPTION:  
 OF 10  
**2**

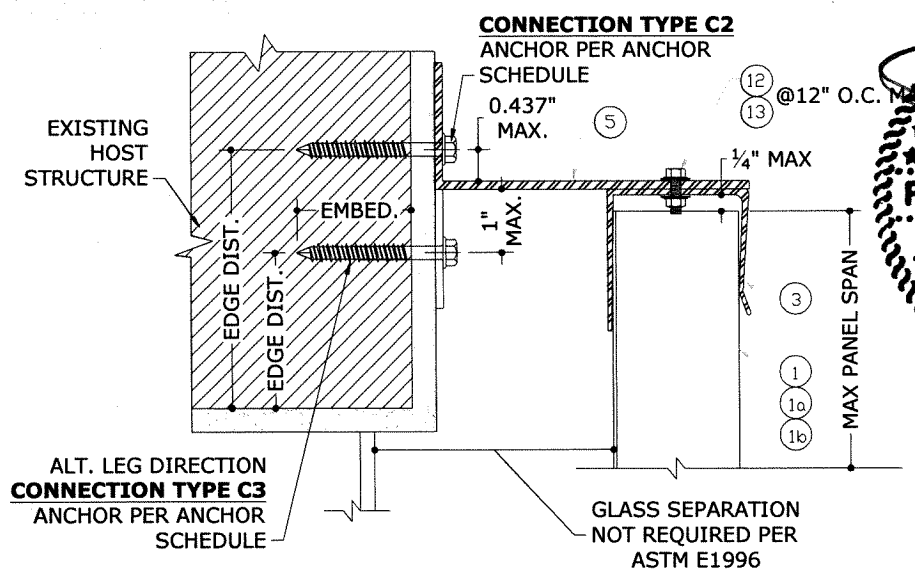
C:\Users\rickn\Engineering Express\Production - Documents\Projects\20-24244 Town & Country - TDI Updates\WP12 - SHU-173 050 Alum Storm Panel\20-24244.2b - 050 Alum Storm Panel (TDI).dwg. 04/01/2021 - 9:32am rickn



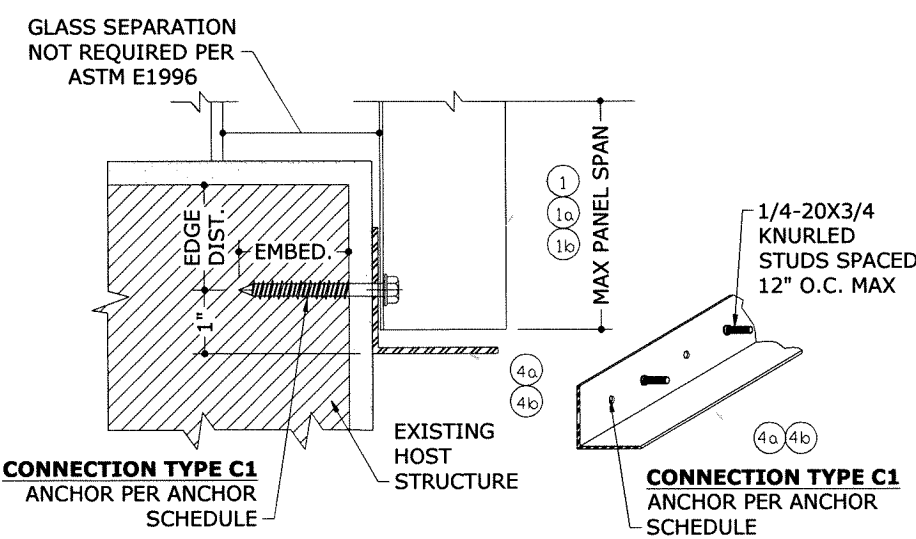
**A "H" MOUNT SECTION**



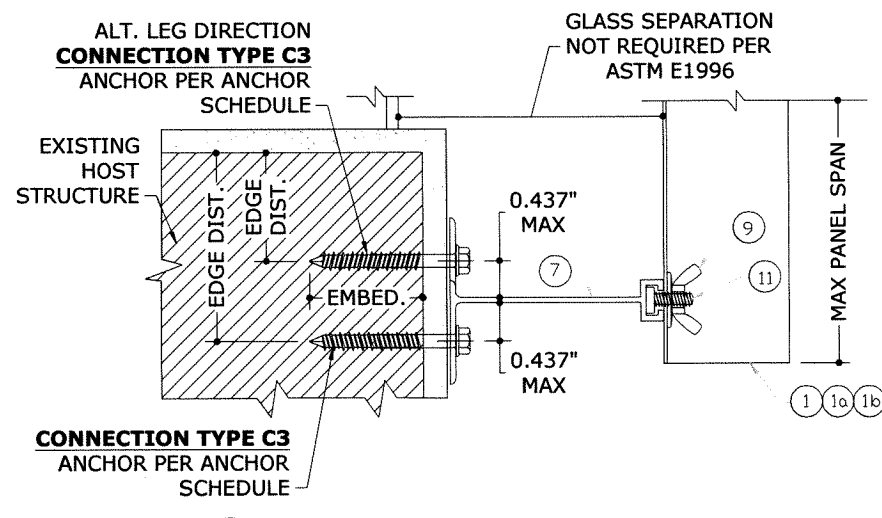
**B BUILD-OUT "U" MOUNT SECTION**



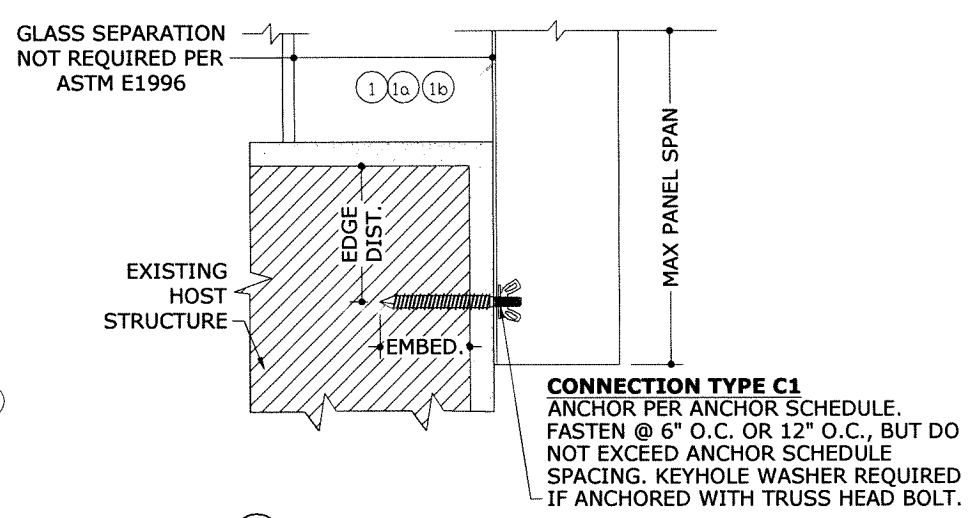
**C ALT. BUILD-OUT "U" MOUNT SECTION**



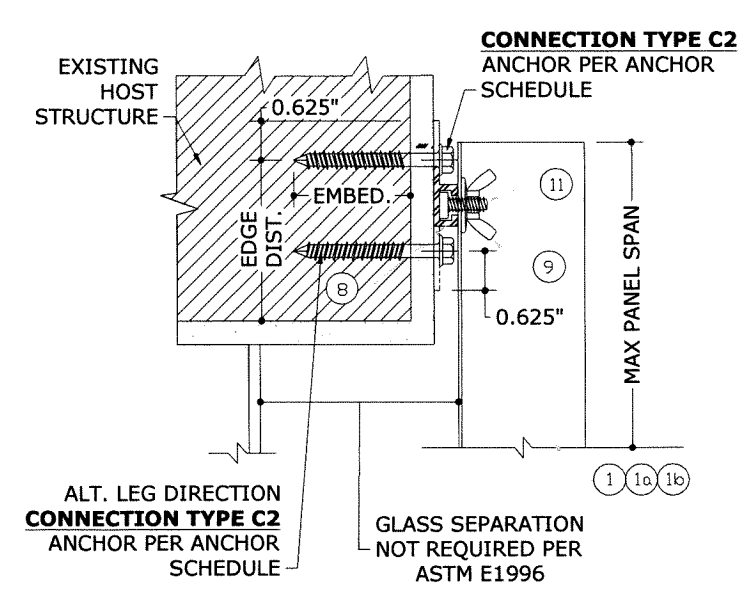
**D STUD ANGLE WALL MOUNT SECTION**



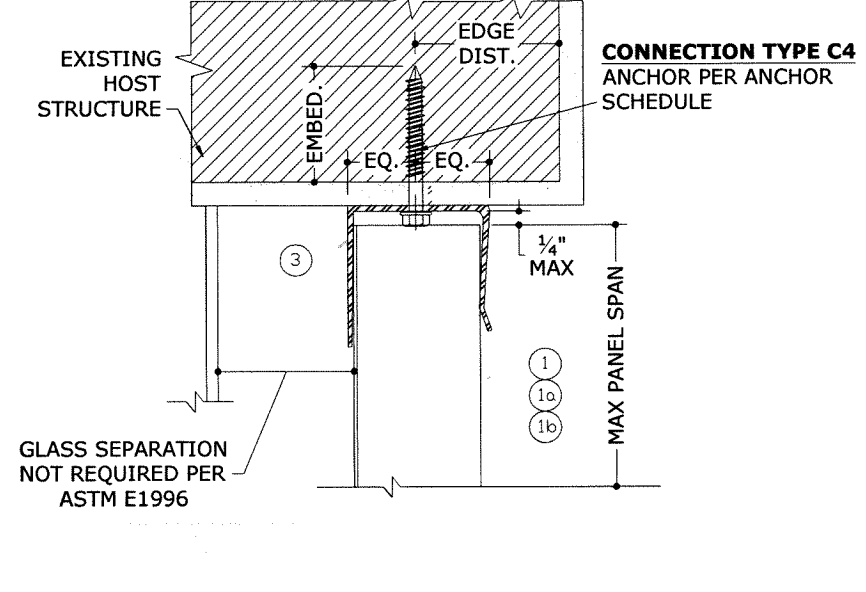
**E BUILD-OUT "F" TRACK SECTION**



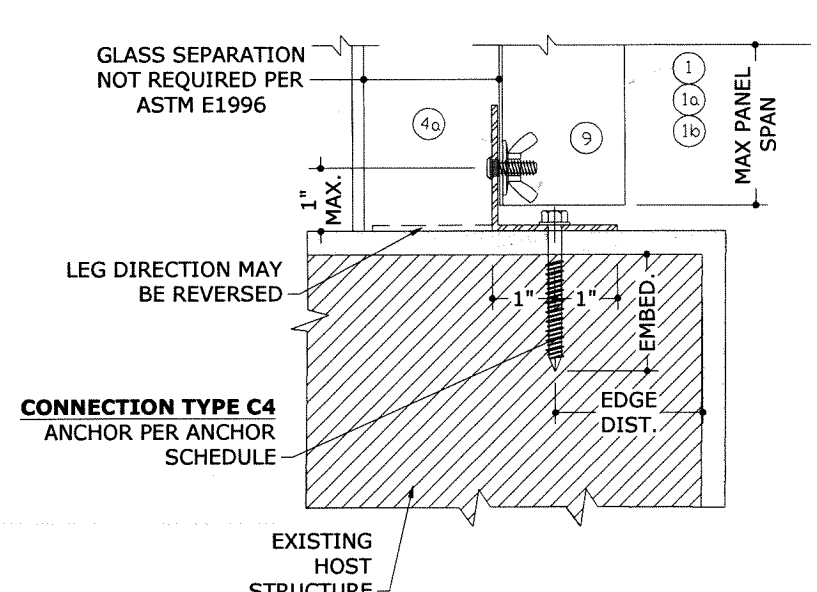
**F DIRECT MOUNT SECTION**



**G "F" TRACK MOUNT SECTION**



**H TRAP "U" HEADER SECTION**



**I TRAP STUD ANGLE SECTION**

FRANK BERNARDO, PE  
 REG. 00064, CA F-11383

STATE OF TEXAS  
 04/01/2021

FRANK L. BERNARDO  
 96064  
 PROFESSIONAL ENGINEER  
 LICENSE NO. 96064

ENGINEERING EXPRESS, INC.  
 CORPORATE OFFICE  
 160 SW 12th AVE, SUITE 106  
 DEERFIELD BEACH, FL 33442  
 (954) 354-0660 | (866) 349-9999  
 TEAM@ENGINEERINGEXPRESS.COM  
 ENGINEERINGEXPRESS.COM

**Town & Country**  
 INDUSTRIES  
 Wholesale Aluminum and Building Products  
 A Division of Reg-Supply Co., Inc.

400 WEST MCNAB ROAD  
 FT. LAUDERDALE, FL 33309

REMARKS	DRWN	CHKD	DATE
INIT ISSUE	KL	FLB	06/03/11
2010 FBC	CSL	KL	12/16/11
CLIENT REVISIONS	KL	FLB	10/25/13
2014 FBC (11-TCM-0003)	RWN	CSL	03/13/15
REV - 2017 FBC	RWN	FLB	07/13/17
2018 FBC UPDATE	CB	RWN	6/17/20

THIS DOCUMENT IS THE PROPERTY OF FRANK L. BERNARDO, P.E. AND SHALL NOT BE REPRODUCED, COPIED, OR TRANSMITTED IN ANY FORM OR BY ANY MEANS, WITHOUT THE WRITTEN PERMISSION OF FRANK L. BERNARDO, P.E. ALTERATIONS, ADDITIONS, ABRIDGMENTS, OR OTHER MARKINGS TO THIS DOCUMENT ARE NOT PERMITTED AND INVALIDATE OUR CERTIFICATION.

COPYRIGHT FRANK L. BERNARDO P.E.

**20-24244.2**

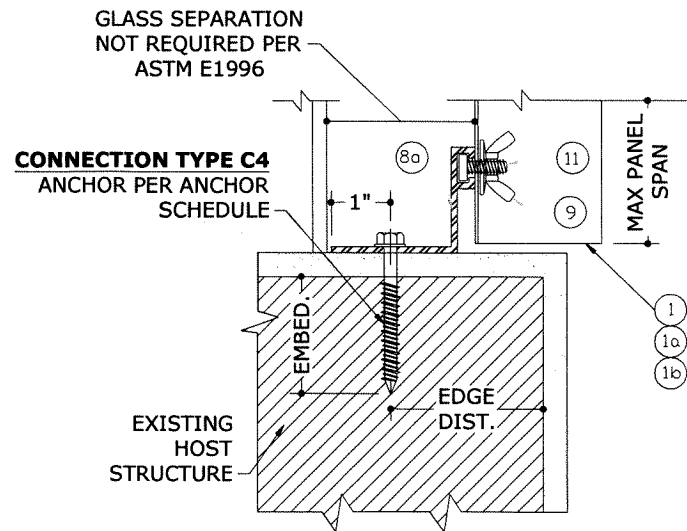
SCALE: -

PAGE DESCRIPTION:

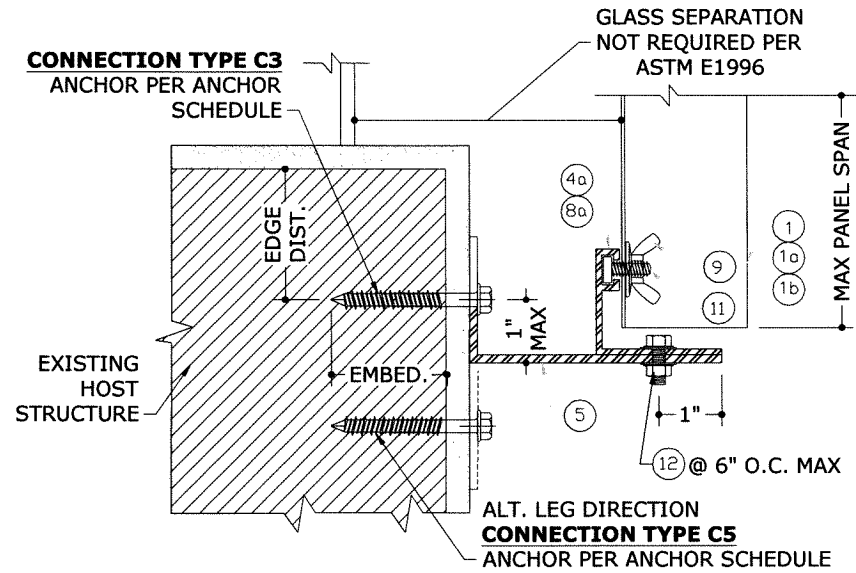
OF 10

**3**

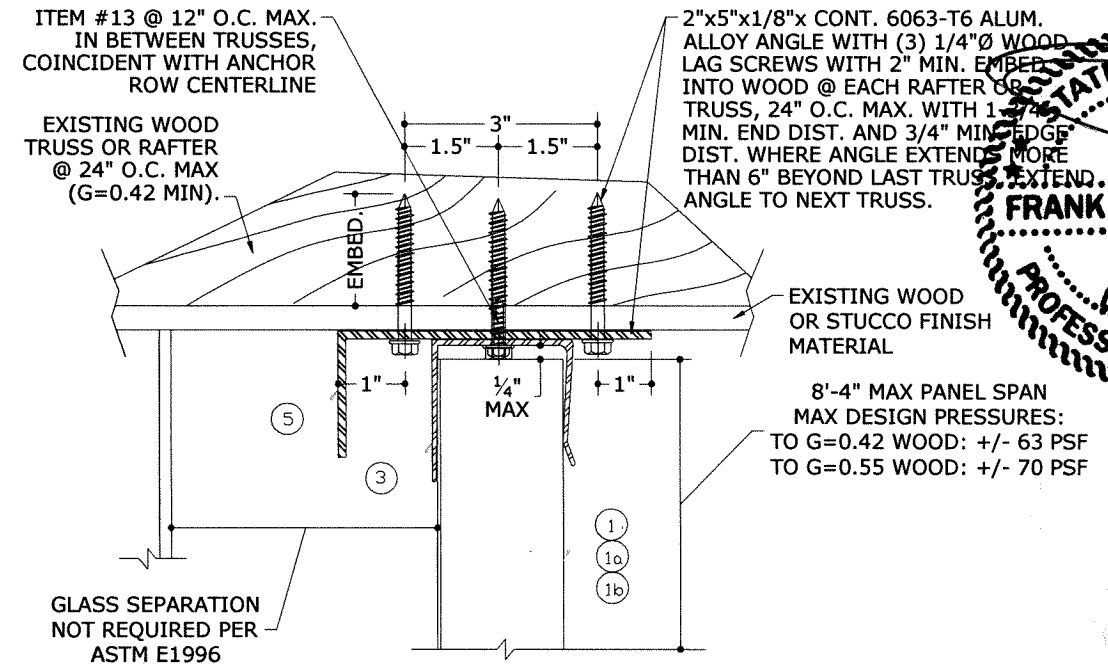
C:\Users\rickn\Engineering Express\Production - Documents\Projects\20-24244 Town & Country - TDI Updates\WP12 - SHU-173 050 Alum Storm Panel\20-24244.2b - 050 Alum Storm Panel (TDI).dwg  
 04/01/2021 - 9:32am rickn



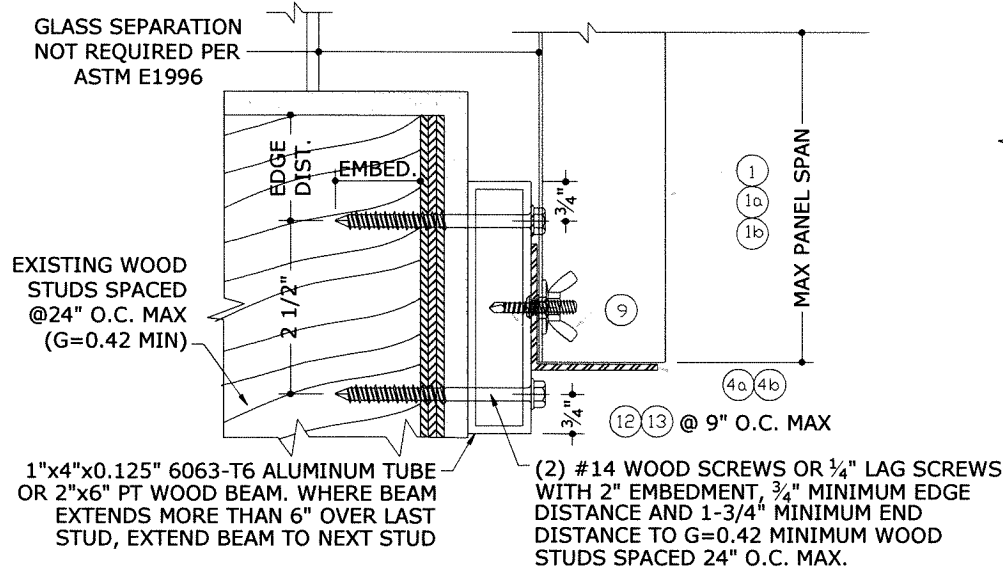
**J "F" ANGLE TRACK MOUNT SECTION**



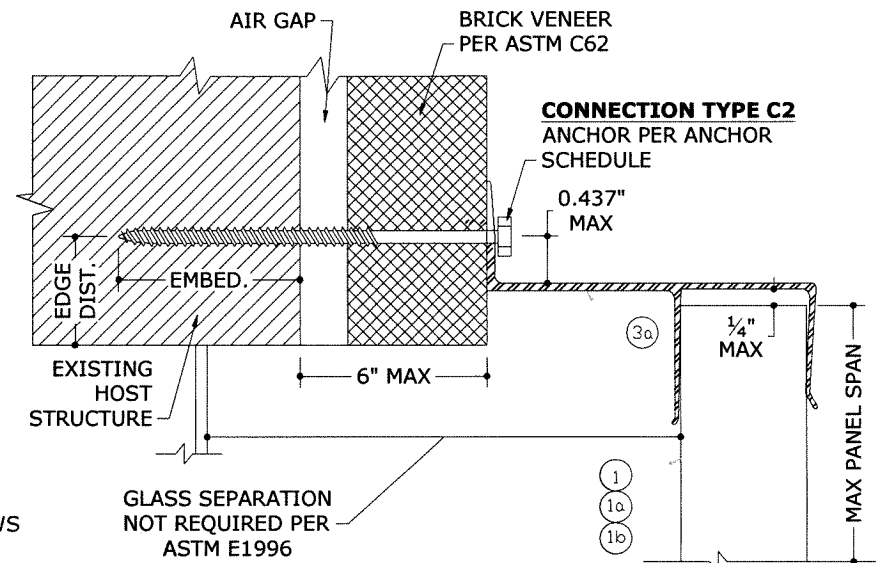
**K REVERSE "F" ANGLE TRACK MOUNT SECTION**



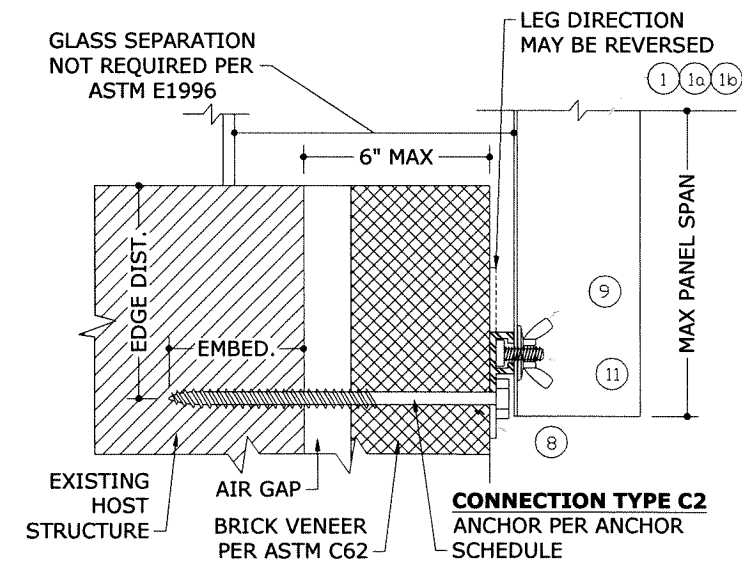
**L CEILING MOUNT/BUILD-OUT SECTION**



**M STUD ANGLE BUILD-OUT MOUNT SECTION INTO STUD WALL**



**N "U" HEADER BUILD-OUT THROUGH VENEER OVER STRUCTURAL BASE SECTION**



**O DIRECT MOUNT THROUGH VENEER OVER STRUCTURAL BASE SECTION**

STATE OF TEXAS  
 FRANK L. BENNARDO  
 96064  
 LICENSED PROFESSIONAL ENGINEER  
 ENGINEERING EXPRESS, P.C.  
 CORPORATE OFFICE  
 160 SW 12th AVE, SUITE 100  
 DEERFIELD BEACH, FL 33442  
 (954) 354-0660 | (866) 354-0660  
 TEAM@ENGINEERINGEXPRESS.COM  
 ENGINEERINGEXPRESS.COM

**Town & Country**  
 INDUSTRIES  
 Wholesale Aluminum and Building Products  
 A Division of AEC Supply Co., Inc.  
 400 WEST MCNAB ROAD  
 FT. LAUDERDALE, FL 33309

DRWN	CHKD	DATE
KL	FLB	06/03/11
CSL	KL	12/16/11
KL	FLB	10/25/13
RW	CSL	03/13/15
RW	FLB	07/31/17
CB	RWN	6/17/20

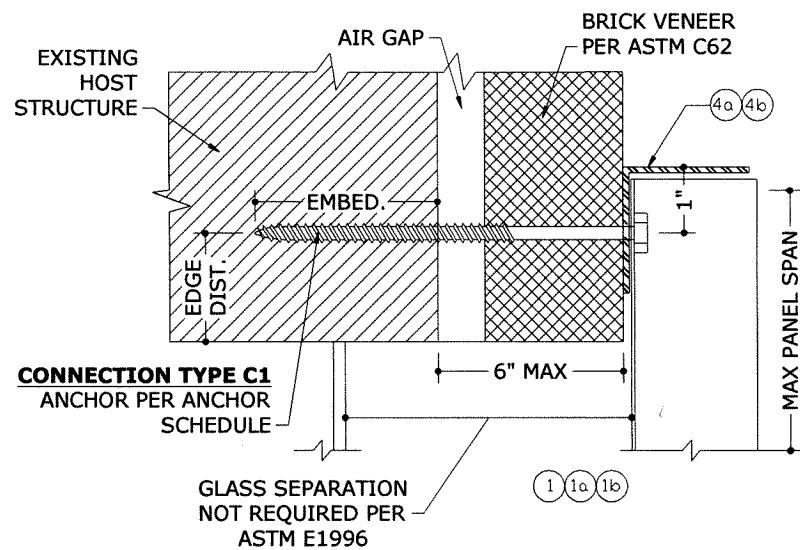
REMARKS  
 INIT ISSUE  
 2010 FBC  
 CLIENT REVISIONS  
 2014 FBC (11-TCM-0003)  
 REV - 2017 FBC  
 2018 IBC UPDATE

THIS DOCUMENT IS THE PROPERTY OF FRANK L. BENNARDO, P.E. AND SHALL NOT BE REPRODUCED IN WHOLE OR PART WITHOUT WRITTEN CONSENT OF FRANK L. BENNARDO, P.E. "A" ALTERATIONS, ADDITIONS, HIGH-LIGHTING, OR OTHER MARKINGS TO THIS DOCUMENT ARE NOT PERMITTED AND INVALIDATE OUR CERTIFICATION.  
 COPYRIGHT FRANK L. BENNARDO P.E.

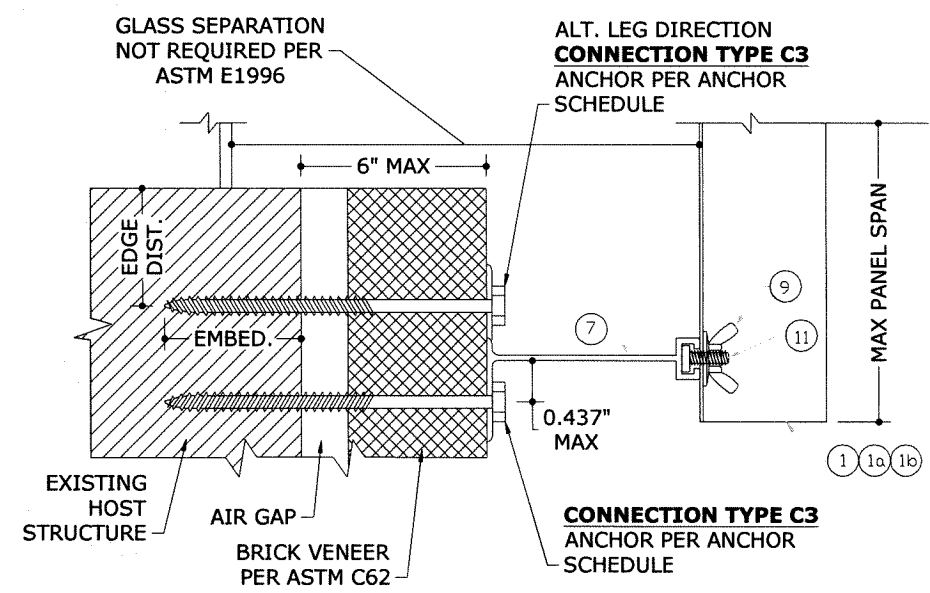
20-24244.2

SCALE:  
 PAGE DESCRIPTION:

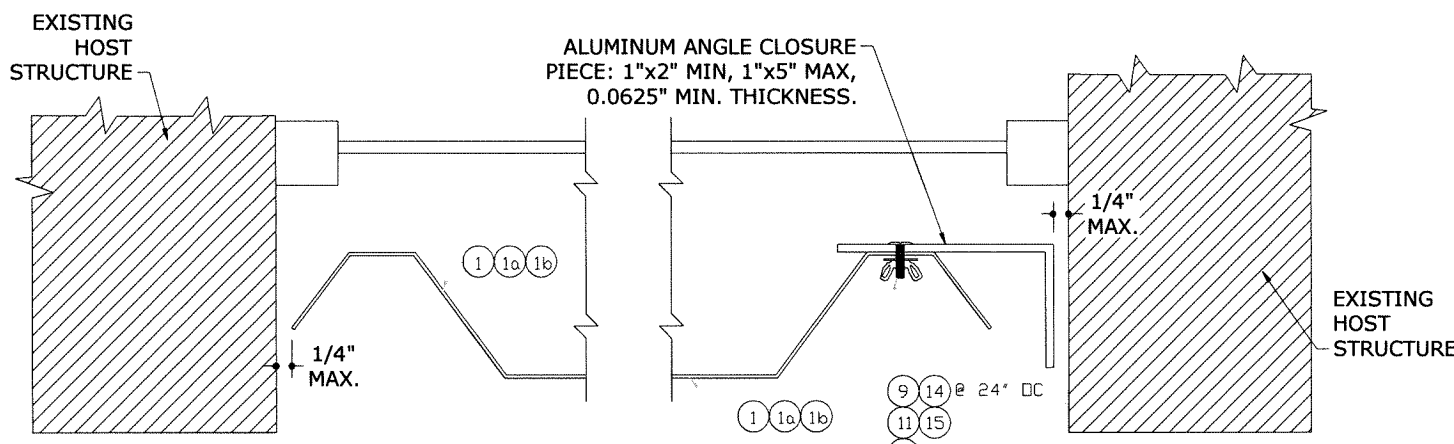
C:\Users\rickn\Engineering\Express\Production - Documents\Projects\20-24244 Town & Country - TD1 Updates\WP12 - SHU-173 050 Alum Storm Panel\20-24244.2b - 050 Alum Storm Panel (TDI).dwg  
 04/01/2021 - 9:32am rickn



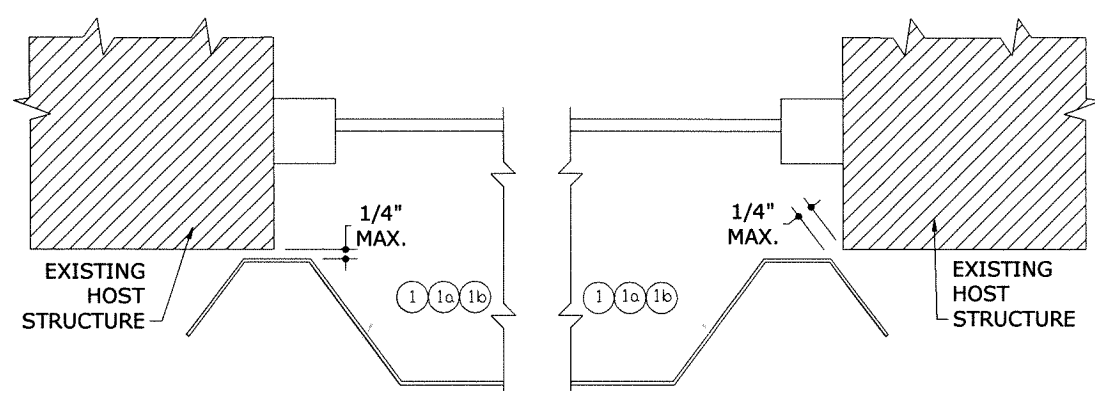
**P** STUD ANGLE THROUGH VENEER OVER STRUCTURAL BASE SECTION



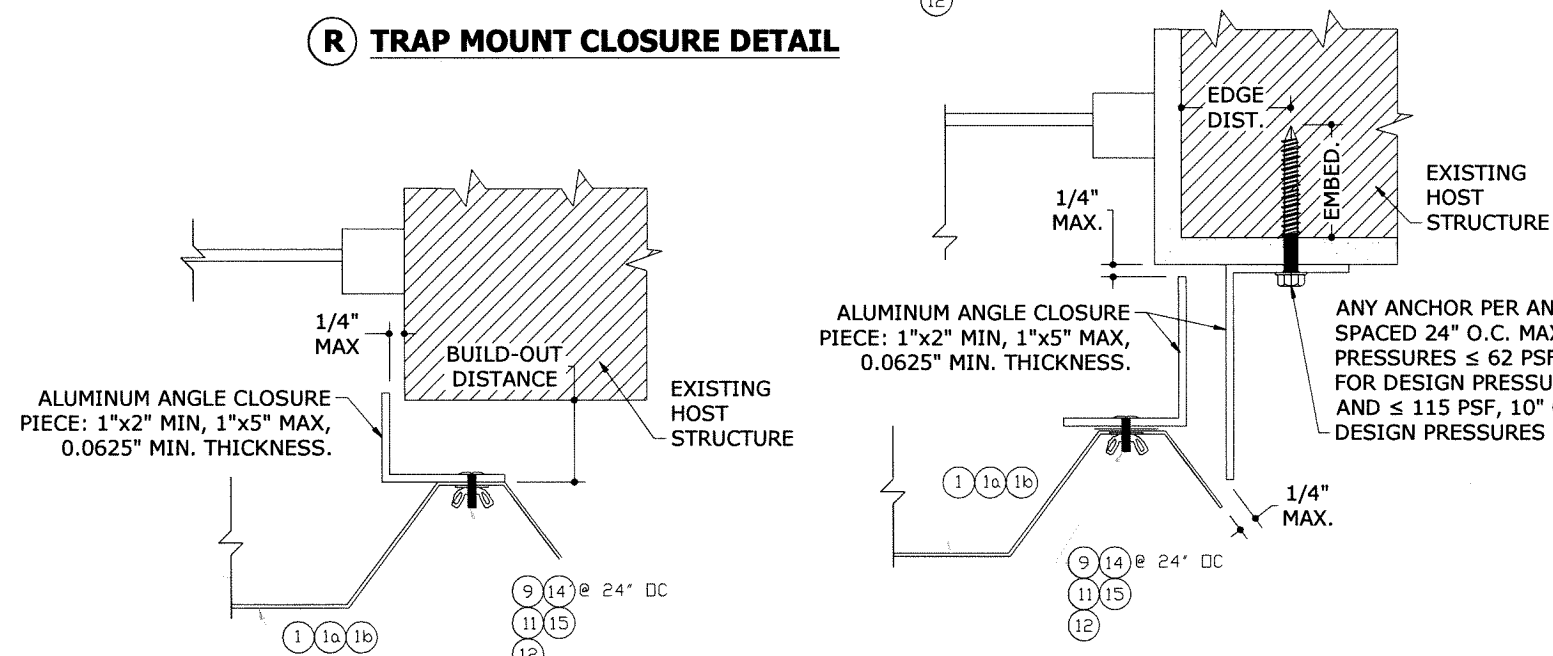
**Q** BUILD-OUT "F" TRACK THROUGH VENEER OVER STRUCTURAL BASE SECTION



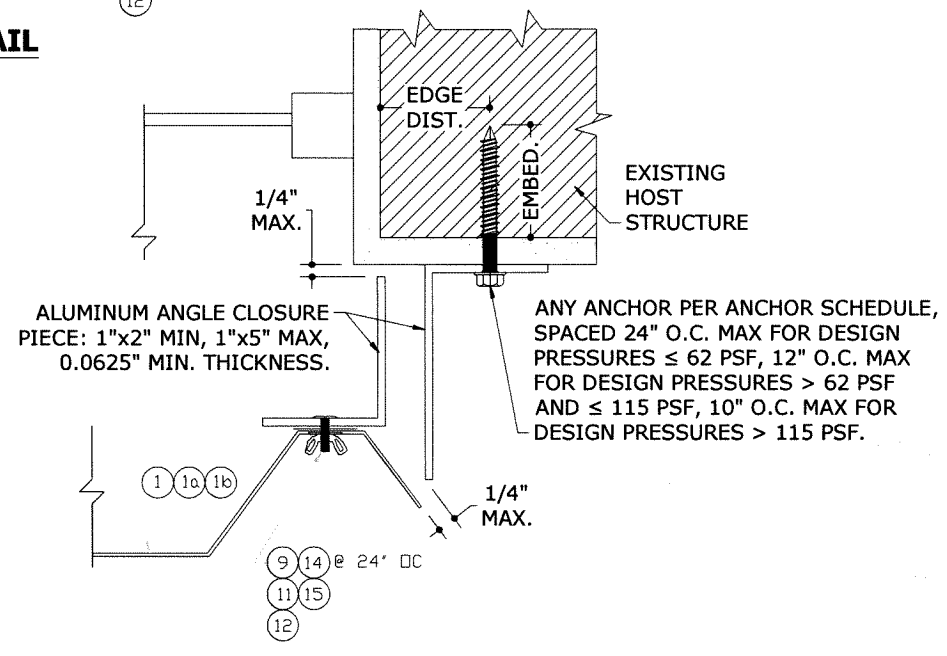
**R** TRAP MOUNT CLOSURE DETAIL



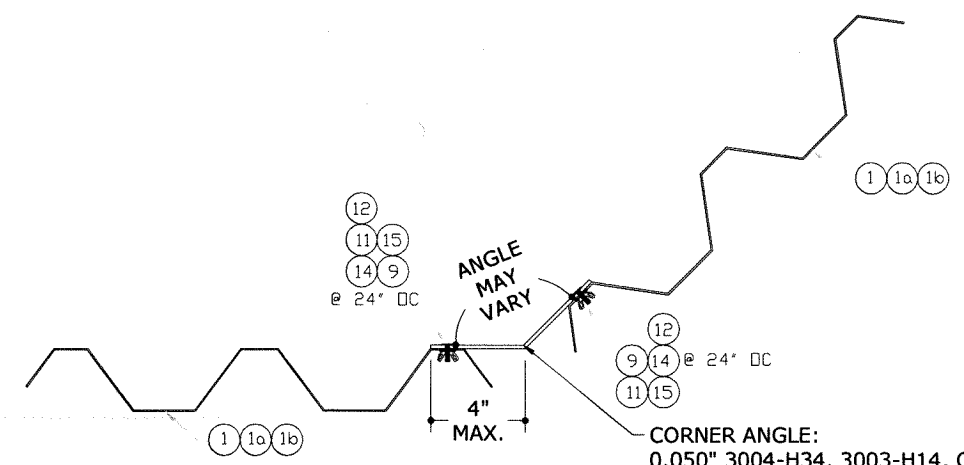
**S** WALL MOUNT CLOSURE DETAIL



**T** BUILD-OUT MOUNT CLOSURE DETAIL



**U** ALTERNATE CLOSURE DETAIL



**V** CORNER ANGLE DETAIL

CORNER ANGLE:  
 0.050" 3004-H34, 3003-H14, OR  
 5052-H34 ALUMINUM;  
 OR 20 GA GALV A36 STEEL

FRANK BENNARDO, PE  
 96064 CA F-11383  
 04/01/2021  
**FRANK L. BENNARDO**  
 96064  
 LICENSED PROFESSIONAL ENGINEER  
 ENGINEERING EXPERTS, INC.  
 CORPORATE OFFICE  
 160 SW 12TH AVE., SUITE 406  
 DEERFIELD BEACH, FL 33442  
 (954) 354-0660 | (866) 396-9958  
 TEAM@ENGINEERINGEXPRESS.COM  
 ENGINEERINGEXPRESS.COM

**Town & Country**  
 INDUSTRIES  
 Wholesale Aluminum and Building Products  
 A Division of ABC Supply Co., Inc.  
 400 WEST MCNAB ROAD  
 FT. LAUDERDALE, FL 33309

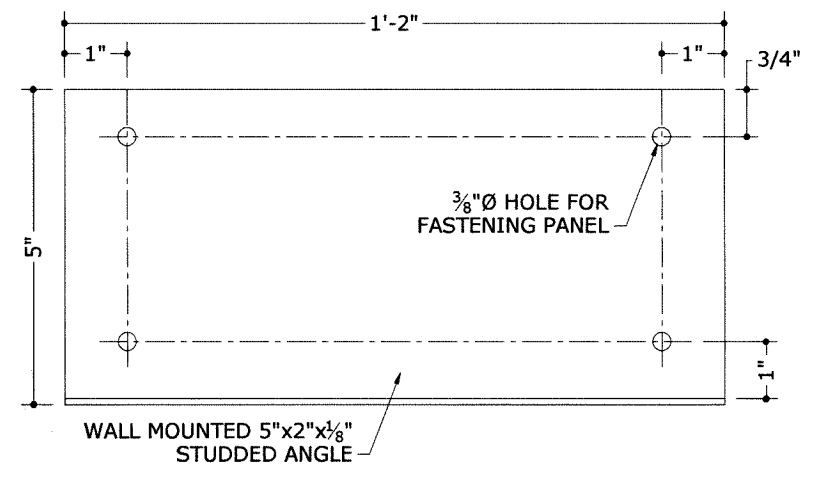
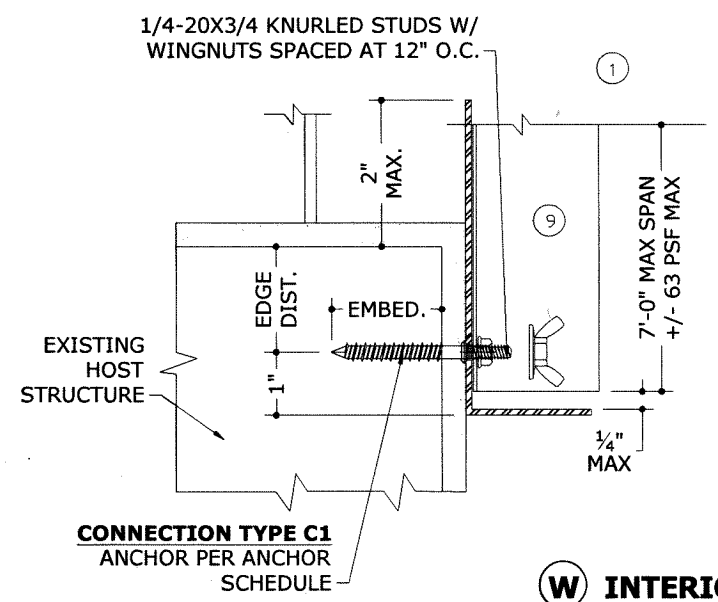
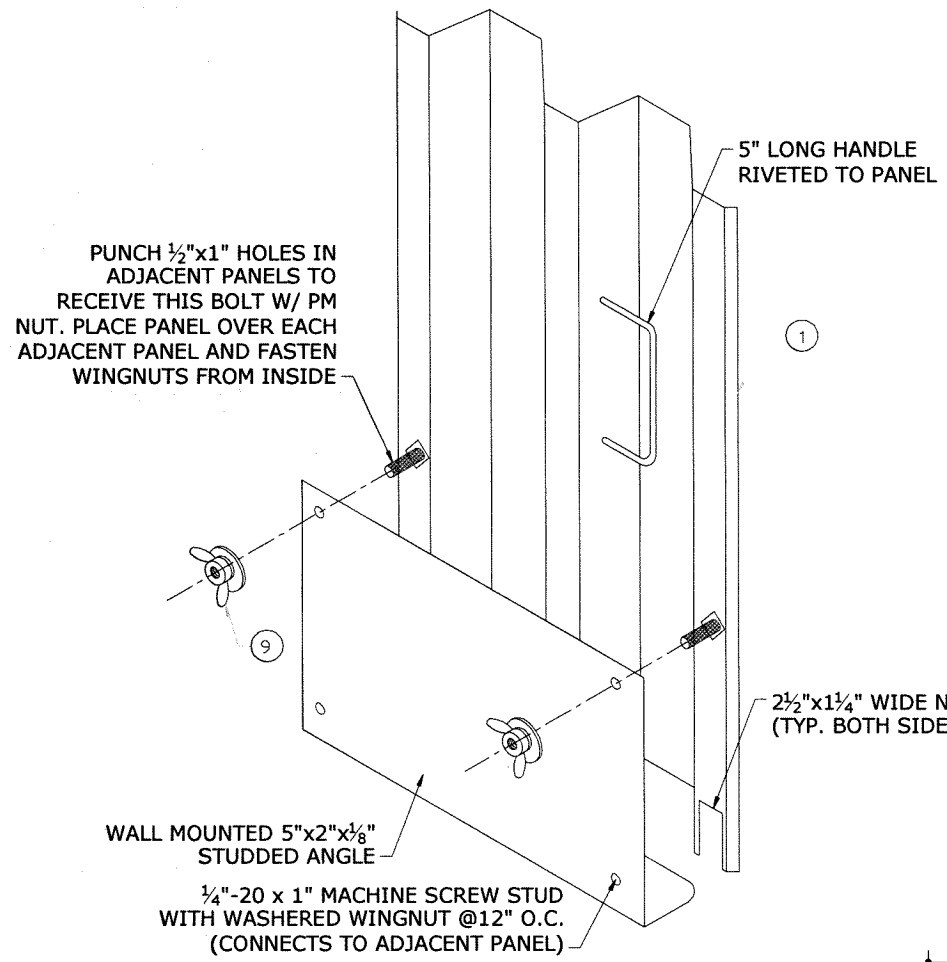
REMARKS	DRWN	CHKD	DATE
INIT ISSUE	KL	FLB	06/03/11
2010 FBC	CSL	KL	12/16/11
CLIENT REVISIONS	KL	FLB	10/25/13
2014 FBC (11-TCM-0003)	RWN	CSL	03/13/15
REV. 2017 FBC	RWN	FLB	07/31/17
2018 IBC UPDATE	CB	RWN	6/17/20

THIS DOCUMENT IS THE PROPERTY OF FRANK L. BENNARDO, P.E. AND SHALL NOT BE REPRODUCED IN WHOLE OR PART WITHOUT WRITTEN CONSENT OF FRANK L. BENNARDO, P.E. "ALTERATIONS, ADDITIONS, HIGHLIGHTING, OR OTHER MARKINGS TO THIS DOCUMENT ARE NOT PERMITTED AND INVALIDATE OUR CERTIFICATION."

COPYRIGHT FRANK L. BENNARDO P.E.

20-24244.2

SCALE:  
 PAGE DESCRIPTION:



**W INTERIOR FASTENING ANGLE ASSEMBLY**  
 THESE DETAILS DEPICT THE CONNECTION OF ANY PANEL FOR AN OPENING WITH PANELS INSTALLED FROM INSIDE. USE OF THESE DETAILS SHALL BE IN CONJUNCTION WITH AN "H" HEADER OR "U" HEADER TOP MOUNT.

FRANK BENNARDO, PE  
 PE# 96064 CA F-11383

STATE OF TEXAS 01/2021

FRANK L. BENNARDO  
 96064  
 LICENSED PROFESSIONAL ENGINEER

ENGINEERING EXPRESS  
 EXP

CORPORATE OFFICE  
 160 SW 12th AVE, SUITE 300  
 DEERFIELD BEACH, FL 33442  
 (954) 354-0660 | (866) 396-9999  
 TEAM@ENGINEERINGEXPRESS.COM  
 ENGINEERINGEXPRESS.COM

**Town & Country**  
 INDUSTRIES  
 Wholesale Aluminum and Building Products  
 A Division of AEC-Quarry Co., Inc.

400 WEST MCNAB ROAD  
 FT. LAUDERDALE, FL 33309

REMARKS	DRWN	CHKD	DATE
INIT ISSUE	KL	FLB	06/03/11
2010 FBC	CSL	KL	12/16/11
CLIENT REVISIONS	KL	FLB	10/25/13
2014 FBC (11-TCM-0003)	RWN	CSL	03/13/15
REV - 2017 FBC	RWN	FLB	07/31/17
2018 IBC UPDATE	CB	RWN	6/17/20

THIS DOCUMENT IS THE PROPERTY OF FRANK L. BENNARDO, P.E. AND SHALL NOT BE REPRODUCED, COPIED, OR TRANSMITTED IN ANY FORM OR BY ANY MEANS, WITHOUT THE WRITTEN PERMISSION OF FRANK L. BENNARDO, P.E. ANY ALTERATIONS, ADDITIONS, REVISIONS, OR OTHER MARKINGS TO THIS DOCUMENT ARE NOT PERMITTED AND INVALIDATE OUR CERTIFICATION.

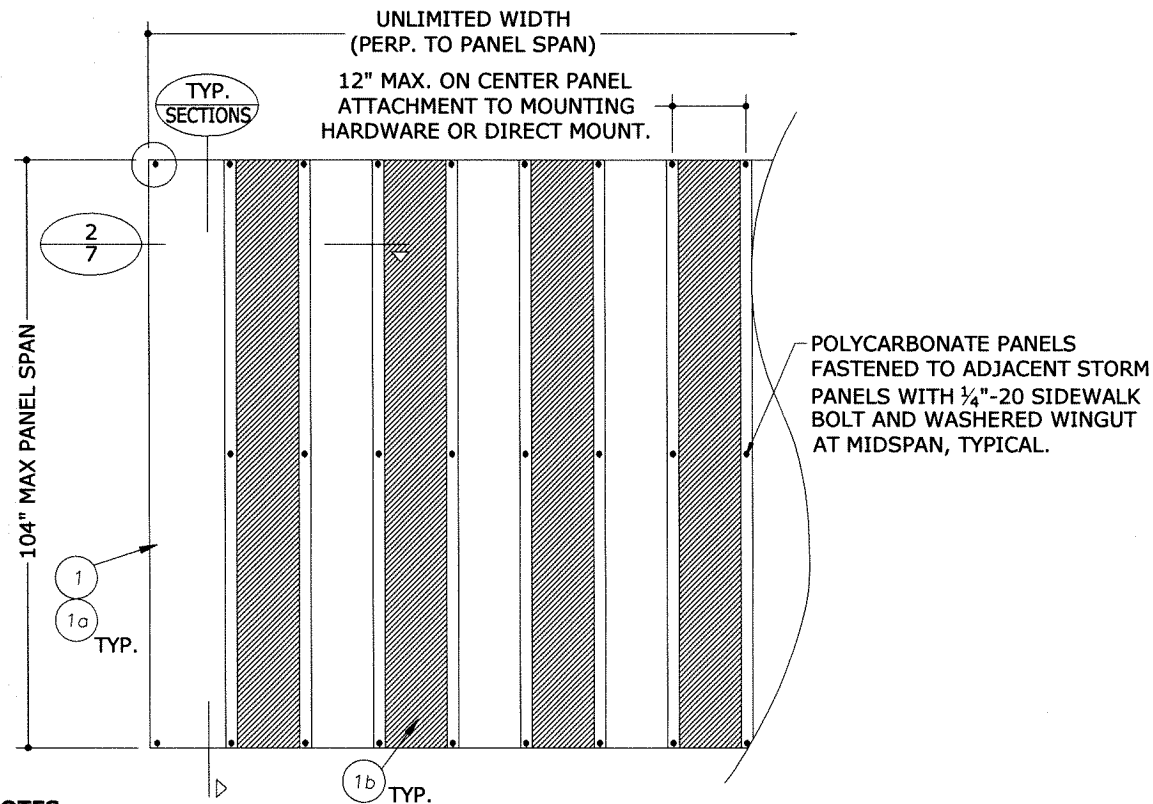
COPYRIGHT FRANK L. BENNARDO P.E.

20-24244.2

SCALE: -

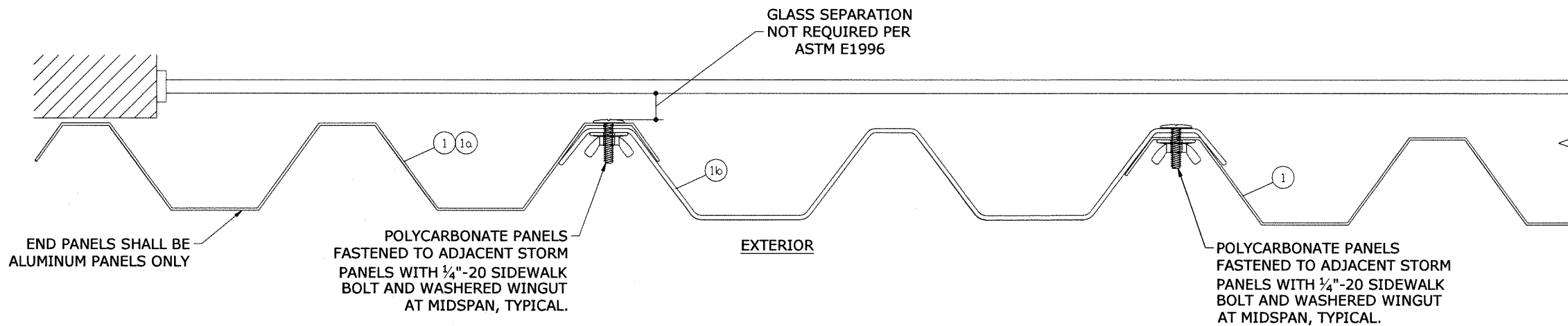
PAGE DESCRIPTION:

OF 10



- NOTES:**
1. TOP MAY BE SLOPED OR RADIUS TO MATCH GEOMETRY OF OPENING. MOUNTING HARDWARE MUST BE ROLL-FORMED TO THE RADIUS; NO NOTCHING OF MOUNTING HARDWARE TO ACHIEVE SHAPES IS ALLOWED.
  2. STORM PANELS MAY BE MOUNTED VERTICALLY OR HORIZONTALLY.
  3. ALUMINUM AND POLYCARBONATE PANELS SHALL ALTERNATE.
  4. END PANELS SHALL BE ALUMINUM PANELS ONLY.

**1**  
7 N.T.S. **TYPICAL ELEVATION WITH ALTERNATING ALUMINUM AND POLYCARBONATE PANELS**  
EXTERIOR ELEV



**2**  
7 N.T.S. **TYPICAL SECTION WITH ALTERNATING ALUMINUM AND POLYCARBONATE PANELS**  
HORIZ SECTION

**ALLOWABLE  
DESIGN PRESSURES**  
WITH ALTERNATING ALUMINUM AND  
POLYCARBONATE PANELS

**+55 PSF  
-58 PSF**

NOTE: ANY INSTALLATION WITH ALTERNATING ALUMINUM AND POLYCARBONATE PANELS SHALL NOT EXCEED THESE DESIGN PRESSURES.

FRANK BENNARDO, PE  
PE# 96064 CA F-11383

STATE OF TEXAS  
1/2021

**FRANK L. BENNARDO**  
96064

LICENSED PROFESSIONAL ENGINEER

CORPORATE & INDUSTRIAL  
160 SW 12th AVE, SUITE 100  
DEERFIELD BEACH, FL 33442  
(954) 354-0660 | (866) 396-9999  
TEAM@ENGINEERINGEXPRESS.COM  
ENGINEERINGEXPRESS.COM

**Town & Country**  
INDUSTRIES  
A Division of REC Supply Co., Inc.

Wholesale Aluminum and Building Products

400 WEST MCNAB ROAD  
FT. LAUDERDALE, FL 33309

REMARKS	DRWN	CHKD	DATE
INIT ISSUE	KL	FLB	06/03/11
2010 FBC	CSL	KL	12/16/11
CLIENT REVISIONS	KL	FLB	10/25/13
2014 FBC (11-TCM-0003)	RWN	CSL	03/13/15
REV - 2017 FBC	RWN	FLB	07/31/17
2018 IBC UPDATE	CB	RWN	6/17/20

THIS DOCUMENT IS THE PROPERTY OF FRANK L. BENNARDO, P.E. AND SHALL NOT BE REPRODUCED IN WHOLE OR PART WITHOUT WRITTEN CONSENT OF FRANK L. BENNARDO, P.E. \* ALTERATIONS, ADDITIONS, HIGHLIGHTING, OR OTHER MARKINGS TO THIS DOCUMENT ARE NOT PERMITTED AND INVALIDATE OUR CERTIFICATION.

COPYRIGHT FRANK L. BENNARDO P.E.

20-24244.2

SCALE: -

PAGE DESCRIPTION:

7 OF 10







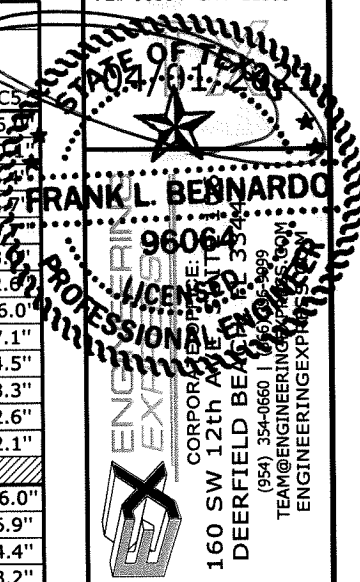
04/01/2021 - 9:33am rickn C:\Users\rickn\Engineering Express\Production - Documents\Projects\20-24244 Town & Country - TDI Updates\WP2 - SHU-173 050 Alum Storm Panel\20-24244-2b - 050 Alum Storm Panel (TDI).dwg

Table with 25 columns: HOST STRUCT., ANCHOR, LOAD (psf), and 5 columns for each of three span ranges (5'-0", 9'-0", 12'-0"). Includes notes on edge distances and diagrams of anchors.

Table with 25 columns: HOST STRUCT., ANCHOR, LOAD (psf), and 5 columns for each of three span ranges (5'-0", 9'-0", 12'-0") under a 3/4" MIN EDGE DISTANCE. Includes diagrams of anchors.

Table with 25 columns: HOST STRUCT., ANCHOR, LOAD (psf), and 5 columns for each of three span ranges (5'-0", 9'-0", 12'-0") under a 3/4" MIN EDGE DISTANCE. Includes diagrams of anchors.

Table with 25 columns: HOST STRUCT., ANCHOR, LOAD (psf), and 5 columns for each of three span ranges (5'-0", 9'-0", 12'-0") under a 3/4" MIN EDGE DISTANCE. Includes diagrams of anchors.



Town & Country INDUSTRIES Wholesale Aluminum and Building Products

400 WEST MCNAB ROAD FT. LAUDERDALE, FL 33309

Table with 4 columns: REMARKS, DATE, and two columns for initials (KL, CS). Includes a date stamp '2018 JBC UPDATE' and a page number '10'.