

GENERAL NOTES:
(IBC 2018 & IRC 2018)

- 1- DEFINITION: THIS PRODUCT IS A HURRICANE PROTECTION DEVICE; DESIGNED, CONSTRUCTED AND ERECTED TO EASILY ENCLOSE AN AREA, PROVIDING PROTECTION FROM HURRICANE FORCE WINDS AND WIND BORNE DEBRIS WITHIN THE ALLOWABLE DESIGNED PRESSURES AND LIMITATIONS STATED IN THIS APPROVAL.
- 2- POSTING: A PERMANENT LABEL SHALL BE PROVIDED AS PER IBC 2018 SECTION 1703.5. IT SHALL BE PLACED ON A READILY VISIBLE LOCATION AND A MINIMUM OF ONE LABEL PER OPENING.
- 3- GLASS SEPARATION (GS): PRODUCT IS QUALIFIED AS "NON POROUS", THEREFORE GLAZING SEPARATION IS NOT REQUIRED WITH EXCEPTION FOR THE FOLLOWING LOCATIONS:
 - 3.1- WIND ZONE 4 AS DEFINED IN ASTM E 1996-14a
 - 3.2- ESSENTIAL FACILITIES AS DEFINED IN ASCE 7-16
 FOR THE ABOVE LOCATIONS THE PRODUCT MUST BE SEPARATED FROM GLAZING AREAS AS PER TABLE 1.
- 4- LOADS: DESIGNED LOAD TO BE CALCULATED BASED ON THE ASCE 7-16 AND PROVIDED BY A PROFESSIONAL ARCHITECT OR ENGINEER FOR EACH SPECIFIC PROJECT. THE CALCULATED DESIGNED PRESSURE MUST NOT EXCEED THE ALLOWABLE PRESSURES FOR EACH SHUTTER COMPONENT TO BE USED.
- 5- MATERIAL: ALL EXTRUDED ALUMINUM SHAPES SHALL BE MADE OF 6063-T6 OR AS NOTED.
- 6- FASTENERS: ASSEMBLY SCREWS AND ANCHORS SHALL BE CORROSION RESISTANT IN ACCORDANCE WITH 2018 IRC AND 2018 IBC.
- 7- USE: IT SHALL BE THE RESPONSIBILITY OF THE CONTRACTOR, ARCHITECT OR ENGINEER OF RECORD TO VERIFY THE FOLLOWING:
 - 7.1- THE STABILITY OF THE STRUCTURE WHERE THE SHUTTER IS TO BE ATTACHED INSURING PROPER ANCHORAGE.
 - 7.2- THE SITE SPECIFIC PROJECT CRITERIA, SUCH AS BUT NOT LIMITED TO, WIND LOADS, LOCAL CODE REQUIREMENTS, DESIGNED PRESSURES ETC.
 - 7.3- THAT THIS APPROVAL IS ADEQUATE TO THE SPECIFIC PROJECT.

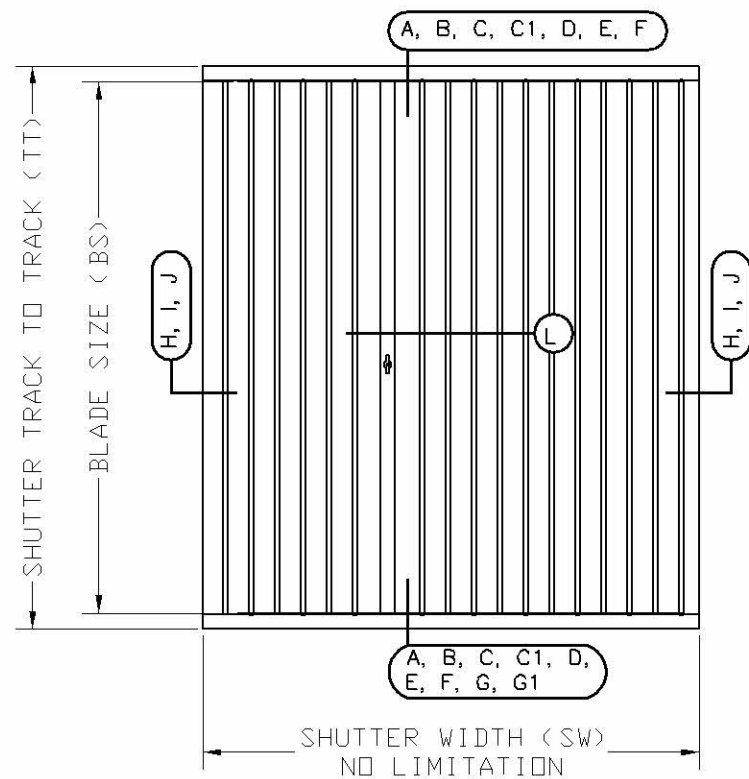
CODE AND STANDARD COMPLIANCE:

INTERNATIONAL BUILDING CODE (IBC 2018)
INTERNATIONAL RESIDENTIAL CODE (IRC 2018)
ASTM E330, E1886, E1996 (LEVEL D MISSILE)

TABLE OF CONTENTS:

SHEET 1- TABLE OF CONTENTS, GENERAL NOTES, TYPICAL ELEVATION, TABLE 1
SHEET 2- SECTIONS A, B & C1 AND CORRESPONDENT ANCHOR TABLES
SHEET 3- SECTIONS C & G1 AND CORRESPONDENT ANCHOR TABLES
SHEET 4- SECTIONS D, E, F & G AND CORRESPONDENT ANCHOR TABLES
SHEET 5- SECTIONS H, H1, I & J
SHEET 6- LOCK SECTIONS L, MALE & FEMALE STACK
SHEET 7- LOCK SECTION LI, UNIMATE STACK
SHEET 8- ANCHOR SCHEDULE, BLADE ASSEMBLY & BILL OF MATERIALS
SHEET 9- PRODUCT COMPONENTS

TYPICAL ELEVATION



USER INSTRUCTIONS:

- 1- DETERMINE PROJECT DESIGN WIND LOAD PRESSURES AS PER ITEM 4 OF GENERAL NOTES, SHEET 1.
- 2- USING TABLE 1, CALCULATE THE MAXIMUM PRESSURE RATING FUNCTION OF BLADE SIZE. PROJECT WIND PRESSURE MUST NOT EXCEED PRESSURE RATING.
- 3- CHECK GLASS SEPARATION WHEN APPLICABLE
- 4- USING SHEETS 2, 3 AND/OR 4 CALCULATE ANCHOR CAPACITY FUNCTION OF MOUNT TYPE, ANCHOR SPACING AND ANCHOR TYPE. SECTIONS ARE INTERCHANGEABLE. PROJECT WIND PRESSURE MUST NOT EXCEED ANCHORAGE PRESSURE CAPACITY.

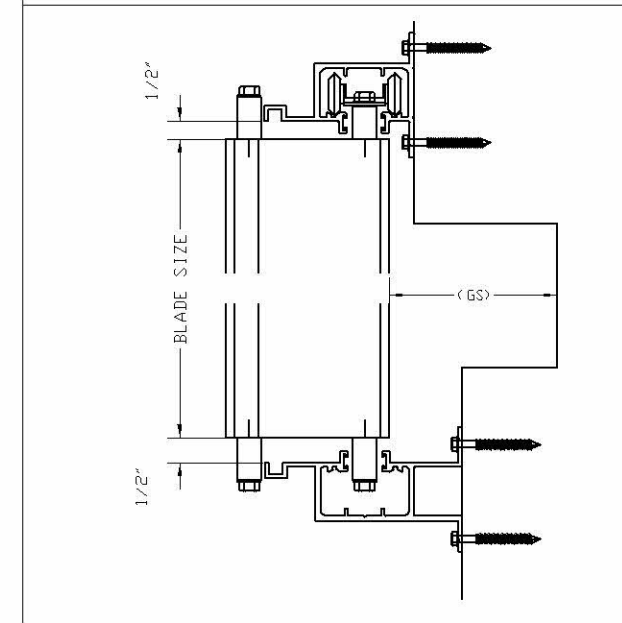
DIGITALLY SIGNED FOR 9 PAGES

THIS ITEM HAS BEEN DIGITALLY SIGNED AND SEALED BY PEDRO FIGUEIREDO ON THE DATE INDICATED HERE. PRINTED COPIES OF THIS DOCUMENT ARE NOT CONSIDERED SIGNED AND SEALED AND THE SIGNATURE MUST BE VERIFIED ON ANY ELECTRONIC COPIES

**TABLE 1
ALLOWABLE DESIGNED LOADS
X
MAXIMUM BLADE SIZE**

BLADE SPAN INCHES	PRESSURE RATING ± (PSF)	GS-GLASS SEPARATION FOR UNIT ELEVATION	
		ABOVE 30'	UP TO 30'
60	188	0.50	5.00
66	170	0.50	5.00
72	156	0.50	5.25
78	144	0.75	5.25
84	134	0.75	5.50
90	125	1.00	5.50
96	117	1.25	5.75
102	110	1.50	5.75
108	102	1.75	6.00
114	92	1.75	6.00
120	83	2.00	6.25
126	75	2.25	6.25
132	69	2.50	6.50
138	63	2.75	6.50
144	58	3.00	6.75
150	52	3.25	6.75

GS: GLASS SEPARATION APPLICABLE ONLY FOR LOCATION AS PER GENERAL NOTES 3



REV. 1 - IBC / IRC 2018 CODE CHANGE
REV. 2 - ANCHOR CHANGE 10/15/20



Engineering:
Eng'g Inc.
CR 11234
9715 WEST BROWARD BLVD. 247
PLANTATION - FLORIDA - 33324

PRODUCT NAME:

CROCI

EXTRUDED ALUMINUM
ACCORDION SHUTTER

MANUFACTURER:

CROCI NORTH AMERICA

11600 ADELMO LANE - FORT MYERS, FL 33966
Tel.: (239) 278-3066 - Fax: (239) 278-5977

SCALE:
NA

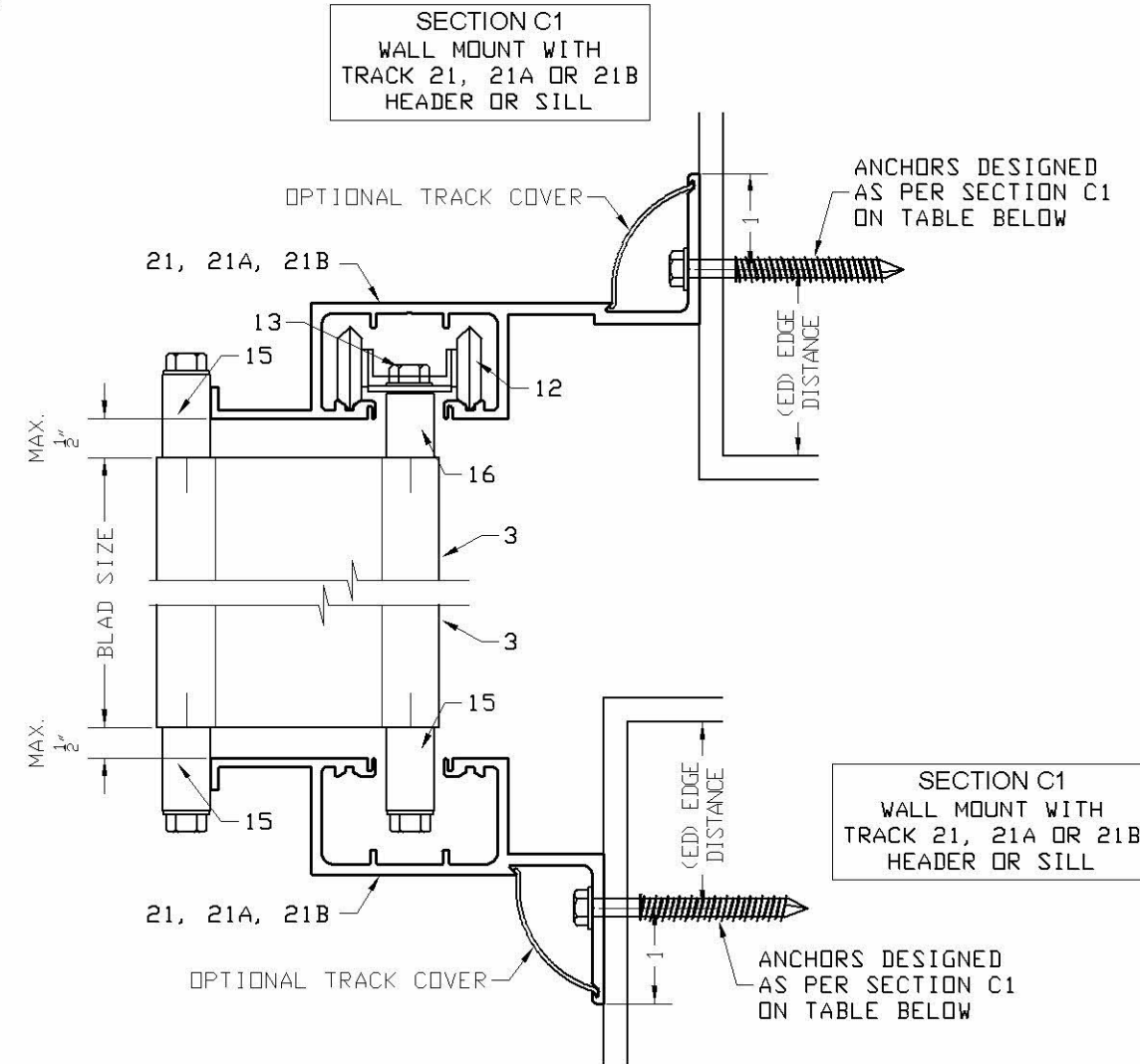
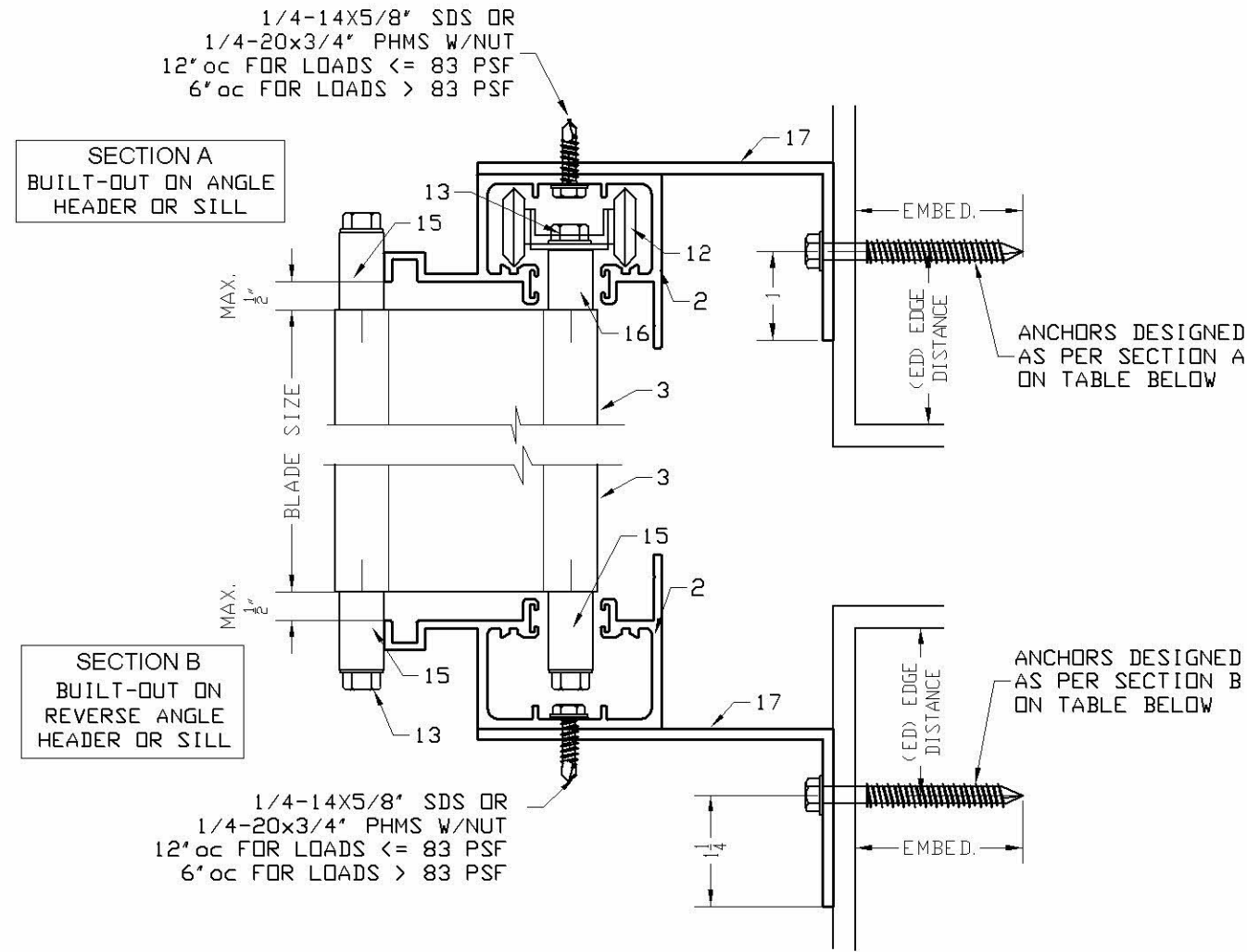
DATE:
10/15/2020

DRAWING #
19-072

SHEET
1 OF 9

Engineer Seal
Pedro De Figueiredo
TEXAS - PE 102937

TYPICAL VERTICAL SECTIONS AND ANCHOR SCHEDULE



Engineering: **Eng'g Inc.**
 CR 11234
 9715 WEST BROWARD BLVD. 247
 PLANTATION - FLORIDA - 33324
 Engineer Seal
 Pedro De Figueiredo
 TEXAS - PE 102937

MAX. BLADE SPAN IN INCHES
 SEE ANCHOR SCHEDULE ON SHEET 8 FOR ANCHOR TYPE

ANCHORAGE SPACING		MAXIMUM ANCHORAGE PRESSURE (PSF) BASED ON SPACING IN INCHES ON CENTER																								
		150					120					105					90					60				
	s	A	B	C	D	E	A	B	C	D	E	A	B	C	D	E	A	B	C	D	E	A	B	C	D	E
SECTION A SILL / HEADER	12	34	30	--	42	35	44	39	11	55	44	50	45	13	63	51	59	53	15	75	59	90	80	23	116	90
	9	47	42	12	59	47	59	53	15	75	59	68	61	17	87	68	80	71	20	102	80	121	108	31	157	120
	6	72	64	18	92	72	90	80	23	116	90	104	92	27	134	103	121	108	31	157	120	183	164	48	239	181
	4	109	97	28	141	108	137	122	35	178	136	157	140	41	204	155	183	164	48	239	181	277	247	72	362	273
	3	146	130	38	190	145	183	164	48	239	181	210	187	55	274	207	246	219	64	321	242	370	330	97	485	364
SECTION B SILL / HEADER	12	18	--	--	22	--	23	20	--	29	23	27	24	--	34	27	31	28	--	40	31	48	42	12	61	48
	9	25	22	--	31	25	31	28	--	40	31	36	32	--	46	36	42	38	11	54	42	64	57	16	83	64
	6	38	34	10	48	38	48	42	12	61	48	55	49	14	71	54	64	57	16	83	64	97	86	25	126	96
	4	58	51	15	74	57	72	64	19	94	72	83	74	21	108	82	97	86	25	126	96	146	130	38	191	144
	3	77	69	20	100	77	97	86	25	126	96	111	99	29	145	110	130	116	34	170	128	195	174	51	256	192
SECTION C1 SILL / HEADER	12	19	--	--	23	--	24	21	--	30	24	28	25	--	35	28	33	29	--	42	33	50	44	13	64	50
	9	26	23	--	32	26	33	29	--	42	33	38	33	9	48	38	44	39	11	57	44	67	60	17	87	66
	6	40	35	10	51	40	50	44	13	64	50	57	51	15	74	57	67	60	17	87	66	101	90	26	132	100
	4	60	54	15	78	60	76	67	19	98	75	87	77	22	113	86	101	90	26	132	100	153	136	40	200	151
	3	81	72	21	105	80	101	90	26	132	100	116	103	30	151	115	136	121	35	177	134	204	182	53	268	201

NOTE: 1- USE IN CONJUNCTION WITH TABLE 1, THE LOWER OF THE PRESSURE CONTROL DESIGN.
 2- LINEAR INTERPOLATION IS ALLOWABLE BETWEEN BLADE SPAN SIZES

PRODUCT NAME:

CROCI
 EXTRUDED ALUMINUM
 ACCORDION SHUTTER

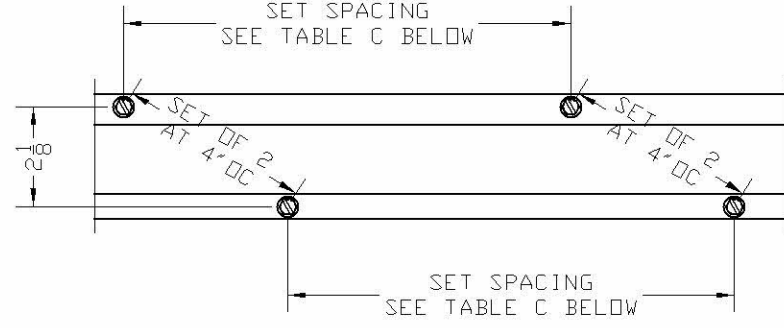
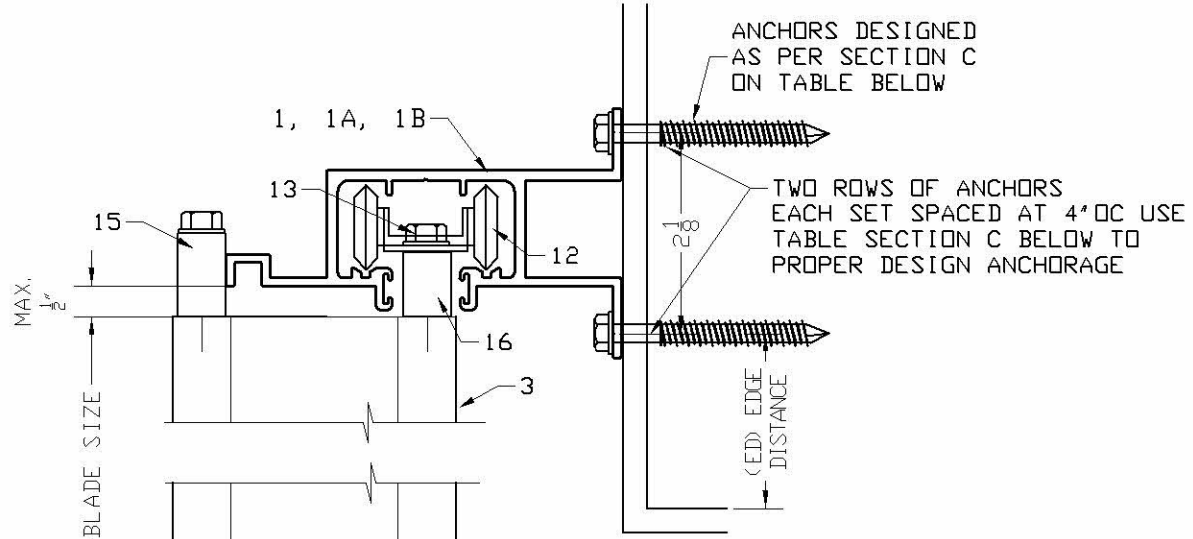
MANUFACTURER:

CROCI NORTH AMERICA
 11600 ADELMO LANE - FORT MYERS, FL 33966
 Tel: (239) 278-3066 - Fax: (239) 278-5977

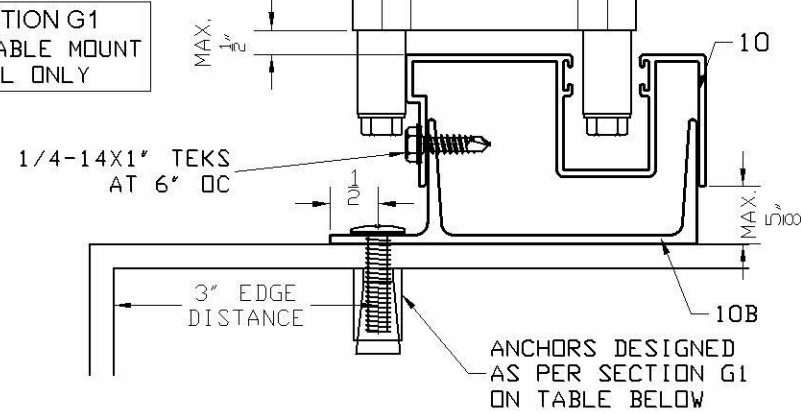
SCALE:
 NA
 DATE:
 10/15/2020
 DRAWING #
 19-072
 SHEET
 2 OF 9

TYPICAL VERTICAL SECTIONS AND ANCHOR SCHEDULE

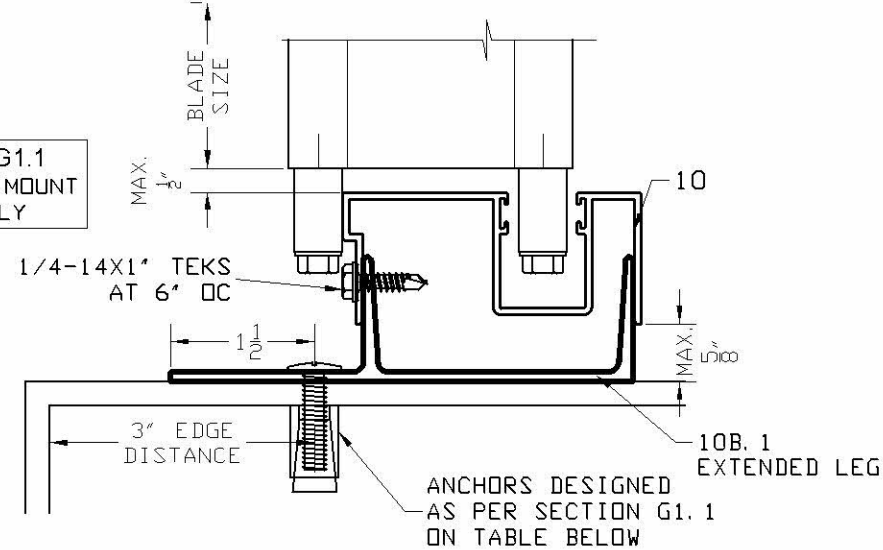
SECTION C WALL MOUNT WITH TRACK 1, 1A OR 1B HEADER OR SILL



SECTION G1 ADJUSTABLE MOUNT SILL ONLY



SECTION G1.1 ADJUSTABLE MOUNT SILL ONLY



MAX. BLADE SPAN IN INCHES
SEE ANCHOR SCHEDULE ON SHEET 8 FOR ANCHOR TYPE

ANCHORAGE SPACING	MAXIMUM ANCHORAGE PRESSURE (PSF) BASED ON SPACING IN INCHES ON CENTER																													
	150					120					105					90					60									
s	A	B	C	D	E	A	B	C	D	E	A	B	C	D	E	A	B	C	D	E	A	B	C	D	E					
24	24	24	7	22	26	30	30	9	29	32	35	35	11	33	37	41	41	13	39	43	63	62	20	61	66	95	95	31	93	99
16	37	37	12	35	39	46	46	15	45	49	53	53	17	52	56	63	62	20	61	66	95	95	31	93	99	127	127	42	125	132
12	50	49	16	48	52	63	62	20	61	66	72	72	23	70	75	84	84	27	82	88	127	127	42	125	132	192	192	63	190	199
8	76	75	25	74	79	95	95	31	93	99	109	109	36	107	113	127	127	42	125	132	192	192	63	190	199	256	256	85	255	266
6	101	101	33	100	106	127	127	42	125	132	146	145	48	144	151	170	170	56	169	177	256	256	85	255	266	319	319	106	317	328

ANCHORAGE SPACING	MAXIMUM ANCHORAGE PRESSURE (PSF) BASED ON SPACING IN INCHES ON CENTER																			
	150				120				105				90				60			
s	A	B	D	E	A	B	D	E	A	B	D	E	A	B	D	E	A	B	D	E
12	--	--	--	--	--	--	--	--	--	--	--	--	--	--	--	--	24	23	20	27
9	--	--	--	--	--	--	--	--	--	--	--	20	21	21	--	24	31	31	27	35
6	19	--	--	21	24	23	20	27	27	26	23	30	31	31	27	35	47	46	41	53
4	28	28	24	32	35	35	31	40	40	40	35	45	47	46	41	53	71	69	61	80
3	38	37	33	42	47	46	41	53	54	53	46	61	63	62	54	71	94	92	81	106
12	21	20	15	26	26	25	19	33	30	28	22	37	35	33	26	44	52	50	38	66
9	28	26	20	35	35	33	26	44	40	38	29	50	46	44	34	58	69	66	51	87
6	42	40	31	52	52	50	38	66	59	57	44	75	69	66	51	87	104	99	77	131
4	62	59	46	79	78	74	58	98	89	85	66	112	104	99	77	131	156	149	115	197
3	83	79	61	105	104	99	77	131	119	113	88	150	139	132	102	175	208	198	154	262

NOTE: 1- USE IN CONJUNCTION WITH TABLE 1, THE LOWER OF THE PRESSURE CONTROL DESIGN.
2- LINEAR INTERPOLATION IS ALLOWABLE BETWEEN BLADE SPAN SIZES



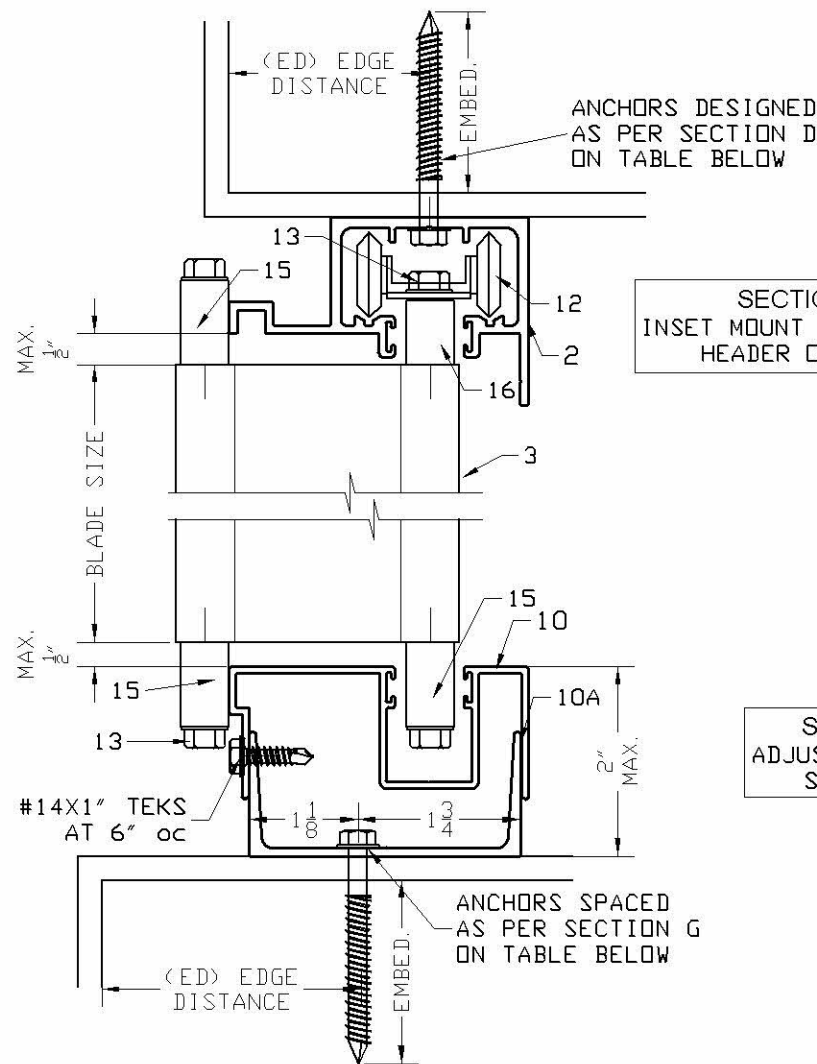
Engineering: **Eng'g Inc.**
CR 11234
9715 WEST BROWARD BLVD. 247
PLANTATION - FLORIDA - 33324

PRODUCT NAME:
CROCI
EXTRUDED ALUMINUM
ACCORDION SHUTTER

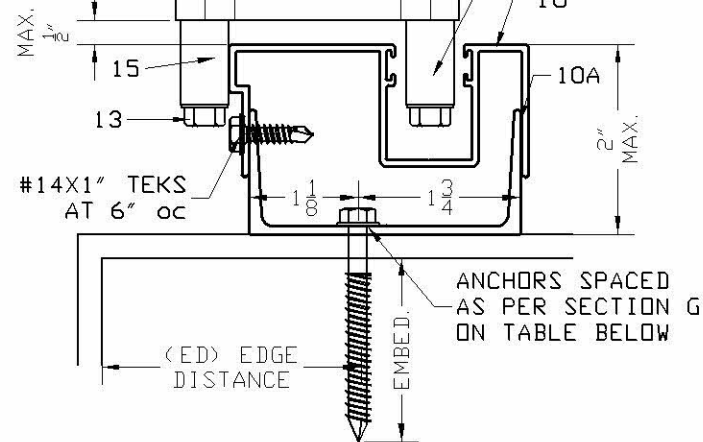
MANUFACTURER:
CROCI NORTH AMERICA
11600 ADELMO LANE - FORT MYERS, FL 33966
Tel: (239) 278-3066 - Fax: (239) 278-5977

SCALE:
NA
DATE:
10/15/2020
DRAWING #
19-072
SHEET
3 OF 9

TYPICAL VERTICAL SECTIONS AND ANCHOR SCHEDULE

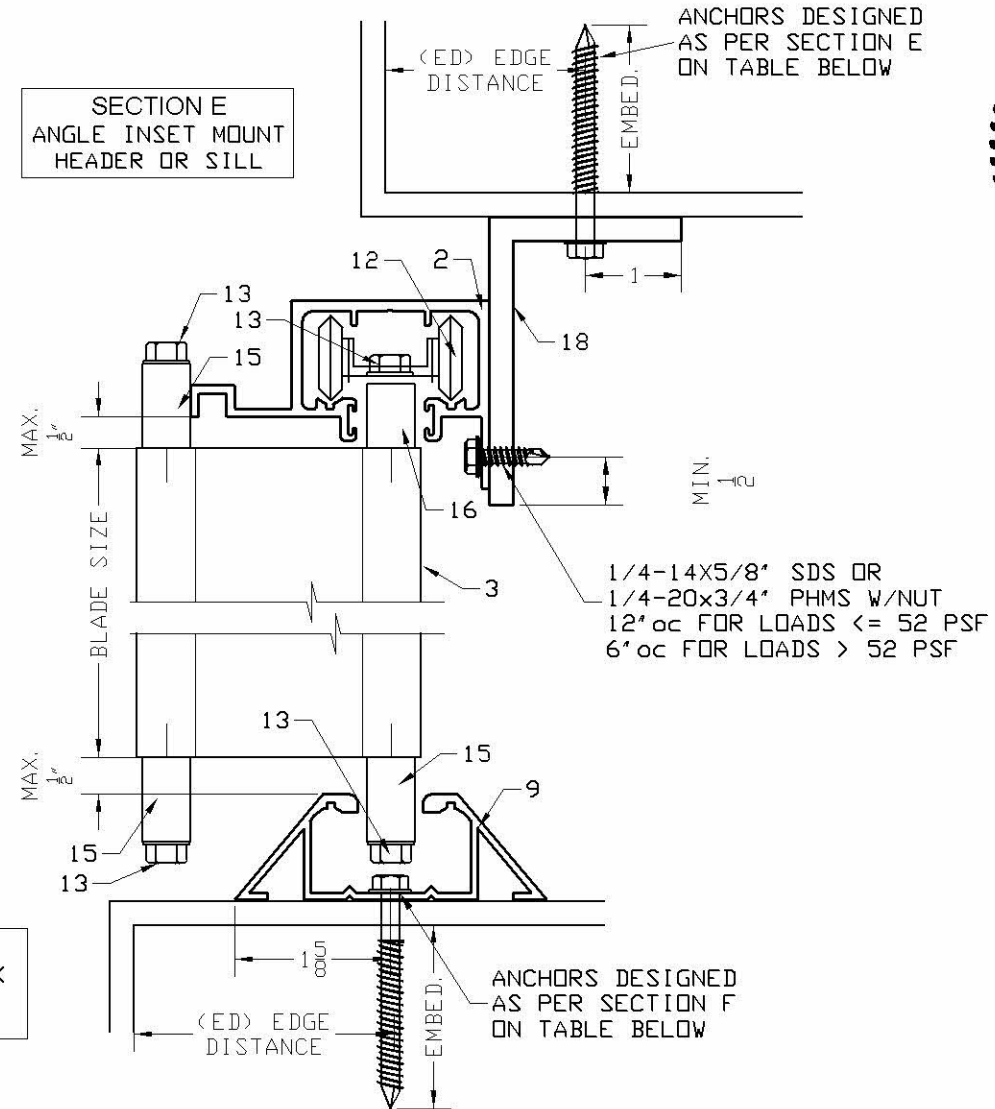


SECTION D
INSET MOUNT W/ TRACK 2
HEADER OR SILL



SECTION G
ADJUSTABLE MOUNT
SILL ONLY

SECTION F
THRESHOLD TRACK
INSET MOUNT
HEADER OR SILL



SECTION E
ANGLE INSET MOUNT
HEADER OR SILL



Engineering:
Eng'g Inc.
CR 11234
9715 WEST BROWARD BLVD. 247
PLANTATION - FLORIDA - 33324

PRODUCT NAME:
CROCI
EXTRUDED ALUMINUM
ACCORDION SHUTTER

MANUFACTURER:
CROCI NORTH AMERICA
11600 ADELMO LANE - FORT MYERS, FL 33966
Tel.: (239) 278-3066 - Fax: (239) 278-5977

SCALE:
NA
DATE:
10/15/2020
DRAWING #
19-072
SHEET
4 OF 9

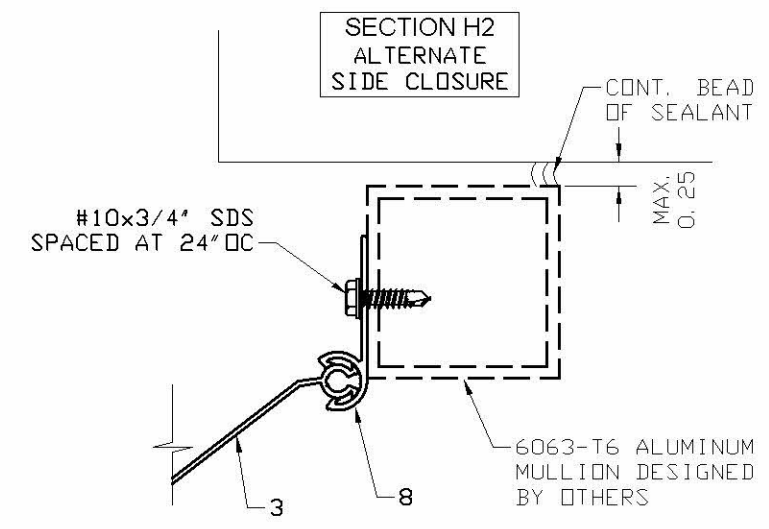
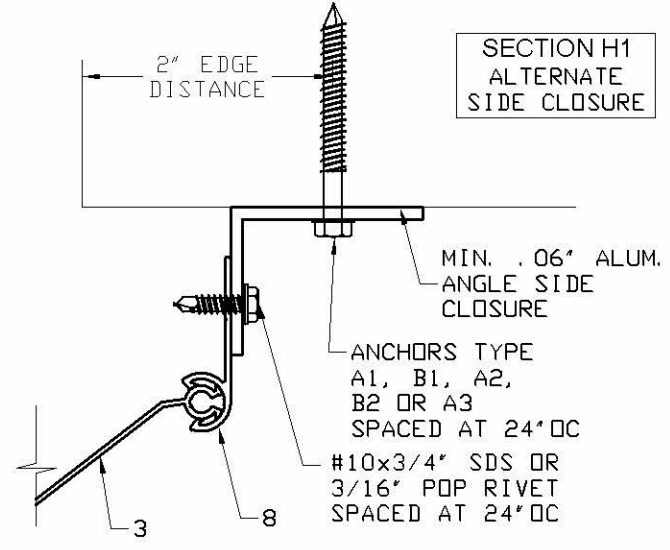
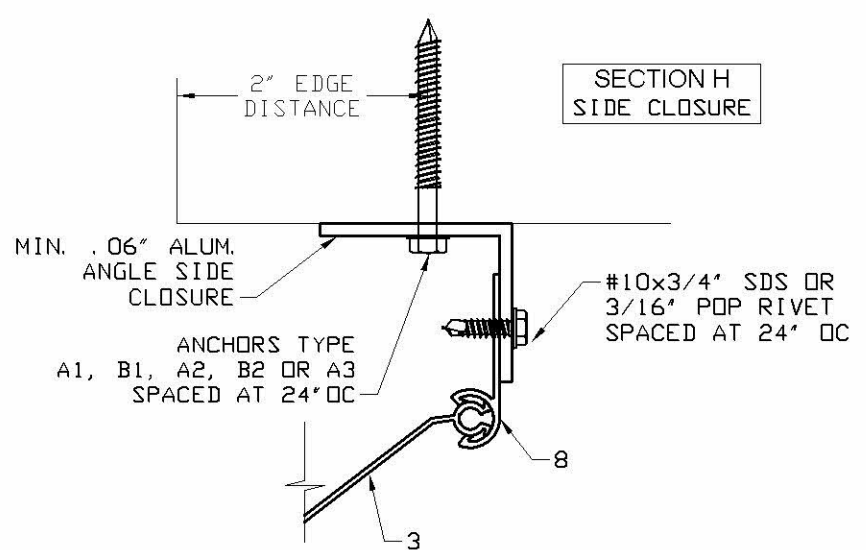
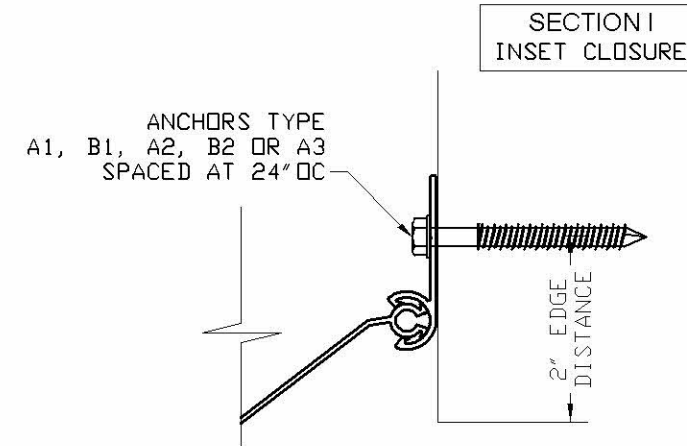
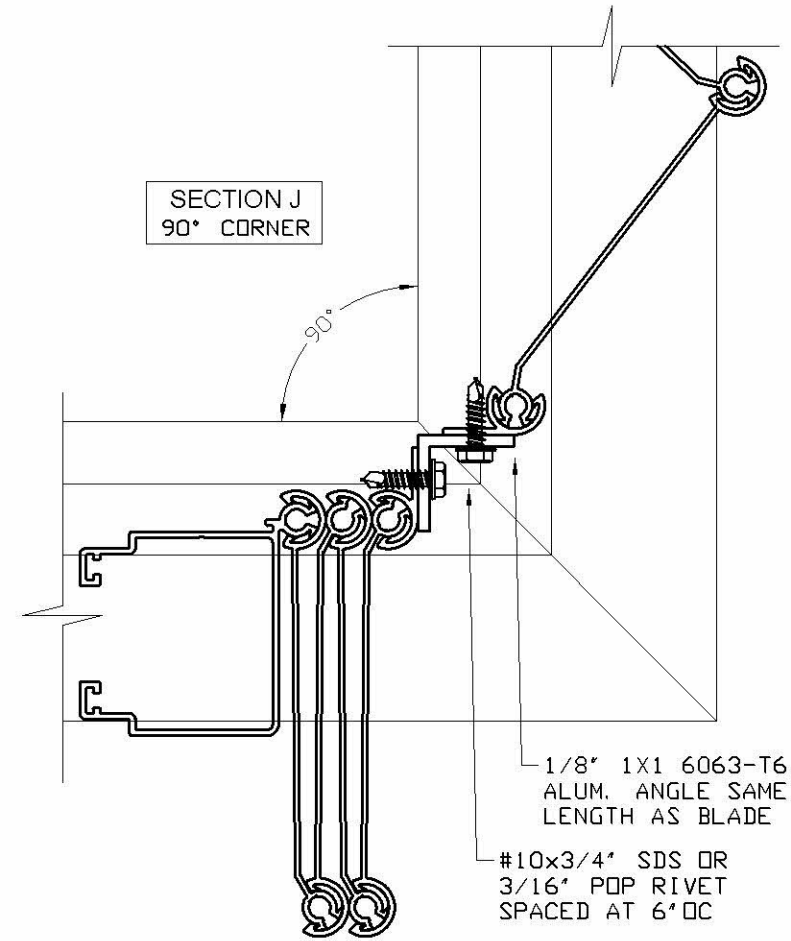
MAX. BLADE SPAN IN INCHES
SEE ANCHOR SCHEDULE ON
SHEET 8 FOR ANCHOR TYPE
ANCHORAGE SPACING

MAXIMUM ANCHORAGE PRESSURE (PSF) BASED ON SPACING IN INCHES ON CENTER

	S	150				120				105				90				60			
		A	B	D	E	A	B	D	E	A	B	D	E	A	B	D	E	A	B	D	E
SECTION G SILL ONLY	12	--	--	--	21	22	21	--	26	25	24	--	30	29	28	22	35	43	42	34	53
	9	23	22	--	28	29	28	22	35	33	32	26	40	39	37	30	47	58	56	45	70
	6	35	33	27	42	43	42	34	53	50	48	38	60	58	56	45	70	87	83	67	106
	4	52	50	40	63	65	63	50	79	74	71	57	91	87	83	67	106	130	125	101	158
SECTION D SILL ONLY	3	69	67	54	85	87	83	67	106	99	95	77	121	116	111	89	141	174	167	134	211
	12	18	--	--	23	24	22	--	30	27	26	20	34	32	31	24	40	49	47	36	62
	9	25	24	--	32	32	31	24	40	37	35	27	46	43	41	32	55	66	63	49	83
	6	39	37	29	49	49	47	36	62	56	54	42	71	66	63	49	83	100	96	74	126
SECTION E SILL ONLY	4	59	57	44	75	75	71	55	94	86	82	64	108	100	96	74	126	151	144	112	190
	3	80	76	59	100	100	96	74	126	115	109	85	144	134	128	100	169	203	193	150	255
	12	--	--	--	--	17	--	--	20	20	--	--	24	25	21	23	28	39	34	36	45
	9	19	--	--	22	25	21	23	28	29	25	27	33	34	30	32	40	53	47	49	62
SECTION F SILL ONLY	6	30	27	28	35	39	34	36	45	45	40	42	52	53	47	49	62	82	72	75	95
	4	47	42	44	55	60	53	56	70	69	61	64	81	82	72	75	95	125	111	114	145
	3	65	57	59	75	82	72	75	95	94	83	86	109	110	98	101	128	167	149	153	195
	12	27	25	18	37	34	32	23	48	39	37	26	55	46	43	31	65	71	66	47	99
SECTION F SILL ONLY	9	37	34	24	51	46	43	31	65	54	50	36	75	63	59	42	88	96	89	64	134
	6	56	53	37	79	71	66	47	99	82	76	54	114	96	89	64	134	145	135	97	202
	4	86	80	57	120	108	101	72	151	124	116	82	173	145	135	97	202	219	205	146	305
	3	116	108	77	161	145	135	97	202	166	155	111	232	195	181	129	271	293	274	195	408

NOTE: 1- USE IN CONJUNCTION WITH TABLE 1, THE LOWER OF THE PRESSURES CONTROL DESIGN.
2- LINEAR INTERPOLATION IS ALLOWABLE BETWEEN BLADE SPAN SIZES

TYPICAL HORIZONTAL SECTIONS
JAMB & CORNER SECTIONS



Engineer Seal
Pedro De Figueiredo
TEXAS - PE 102937

Engineering:
Eng'g Inc.
CR 11234
9715 WEST BROWARD BLVD. 247
PLANTATION - FLORIDA - 33324

PRODUCT NAME:
CROCI
EXTRUDED ALUMINUM
ACCORDION SHUTTER

MANUFACTURER:
CROCI NORTH AMERICA
11600 ADELMO LANE - FORT MYERS, FL 33966
Tel.: (239) 278-3066 - Fax: (239) 278-5977

SCALE:
NA

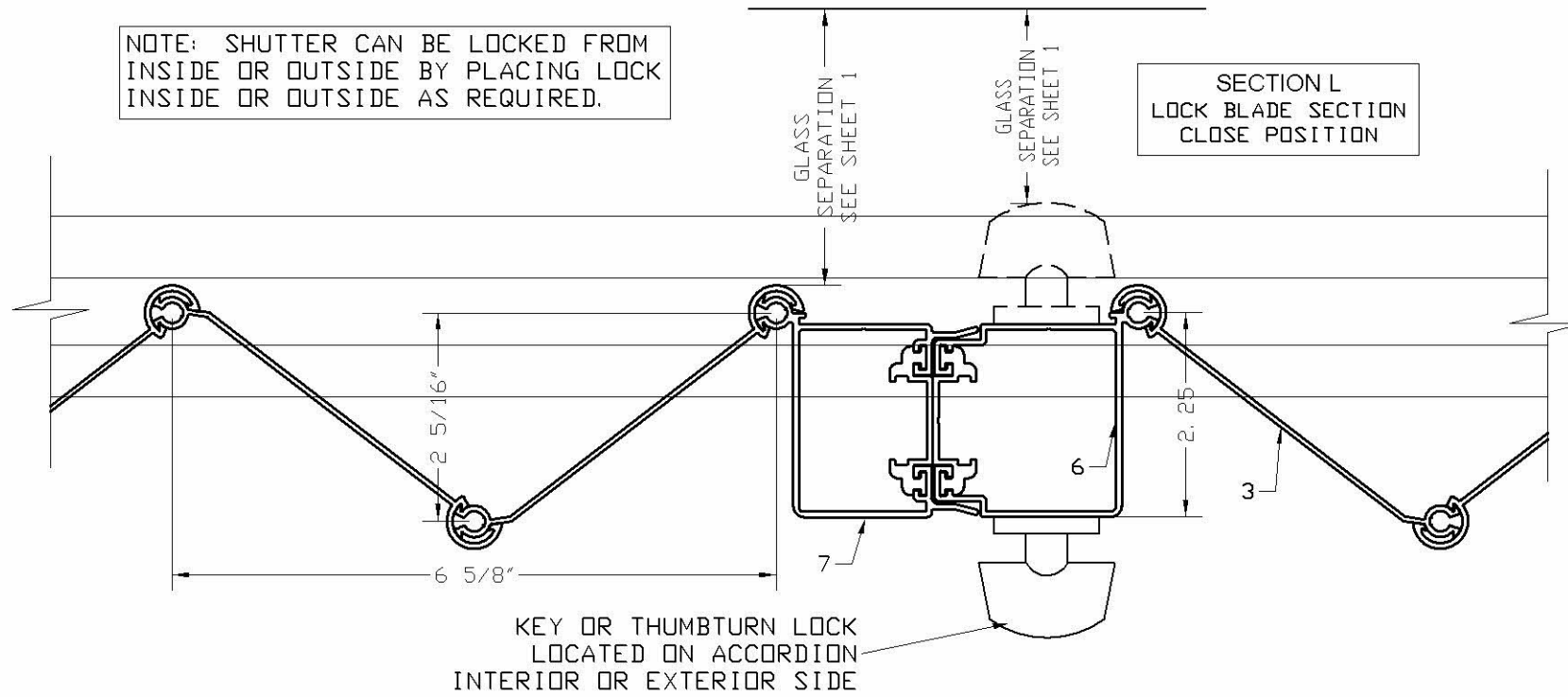
DATE:
10/15/2020

DRAWING #
19-072

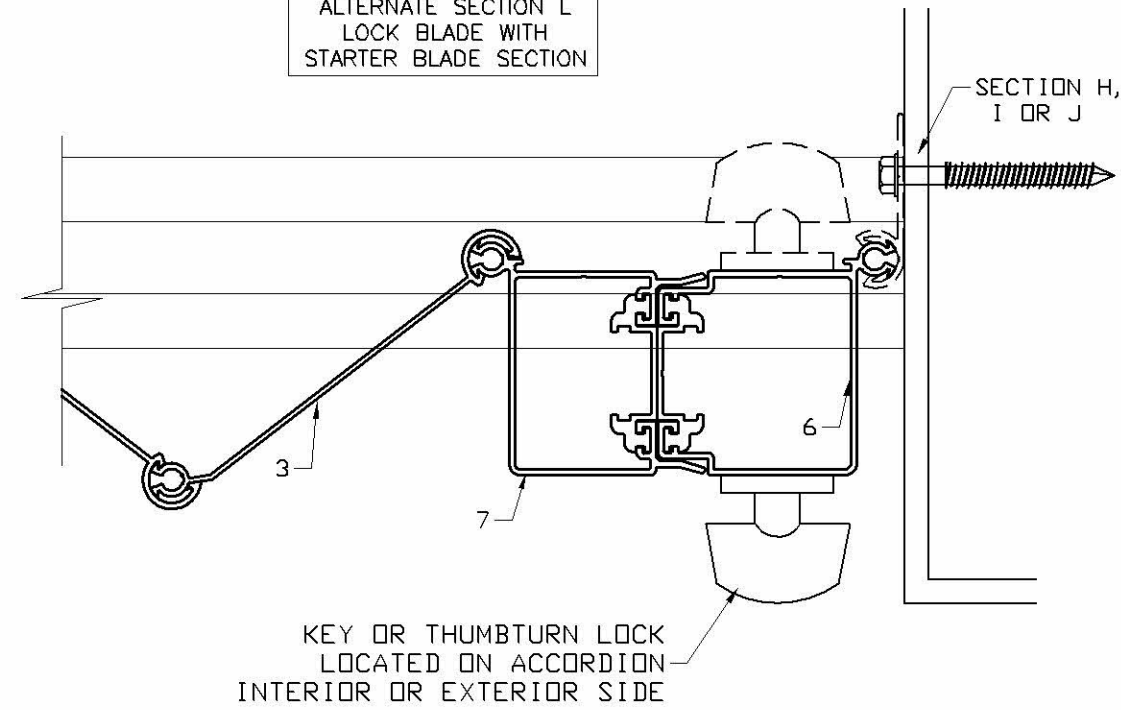
SHEET
5 OF 9

TYPICAL HORIZONTAL SECTIONS
LOCK SECTIONS

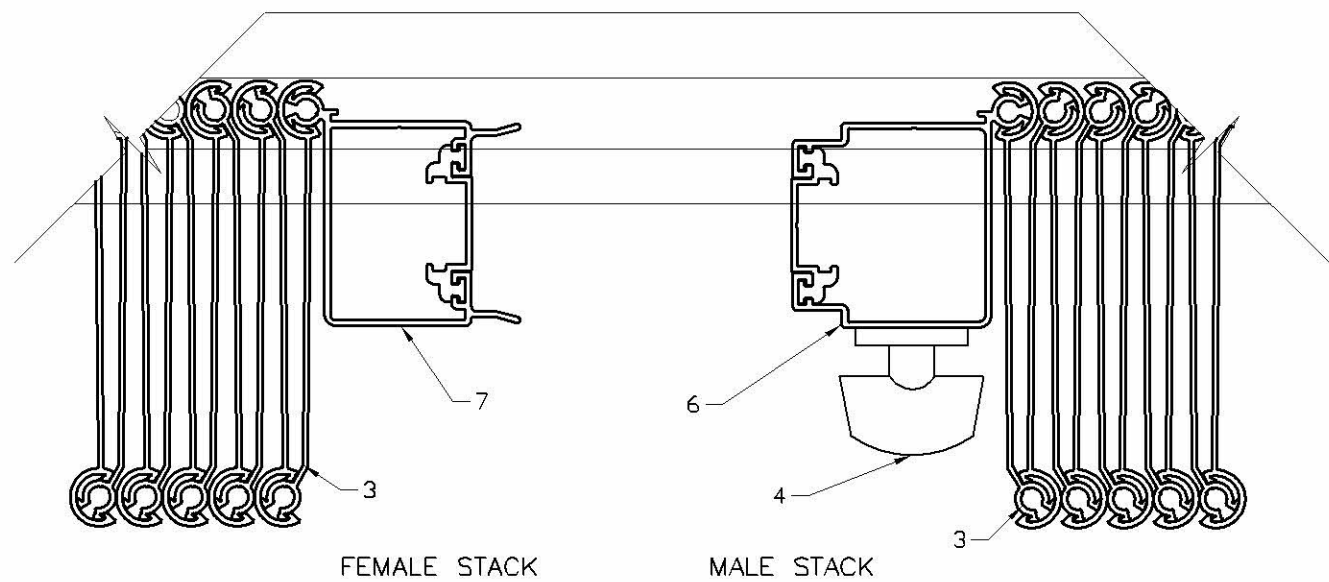
NOTE: SHUTTER CAN BE LOCKED FROM INSIDE OR OUTSIDE BY PLACING LOCK INSIDE OR OUTSIDE AS REQUIRED.



ALTERNATE SECTION L
ALTERNATE SECTION L
LOCK BLADE WITH
STARTER BLADE SECTION



SECTION L
LOCK BLADE SECTION
OPEN POSITION



Engineering:
Eng'Co Inc.
CR 11234
9715 WEST BROWARD BLVD. 247
PLANTATION - FLORIDA - 33324

PRODUCT NAME:
CROCI
EXTRUDED ALUMINUM
ACCORDION SHUTTER

MANUFACTURER:
CROCI NORTH AMERICA
11600 ADELMO LANE - FORT MYERS, FL 33966
Tel.: (239) 278-3066 - Fax: (239) 278-5977

SCALE:
NA

DATE:
10/15/2020

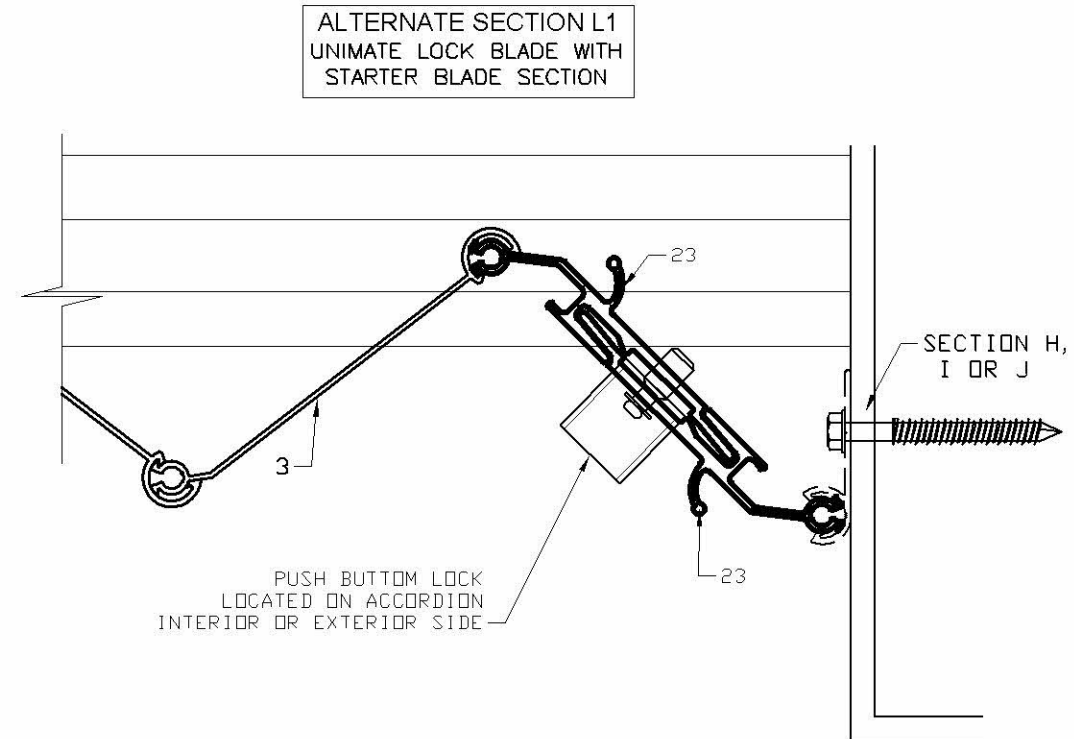
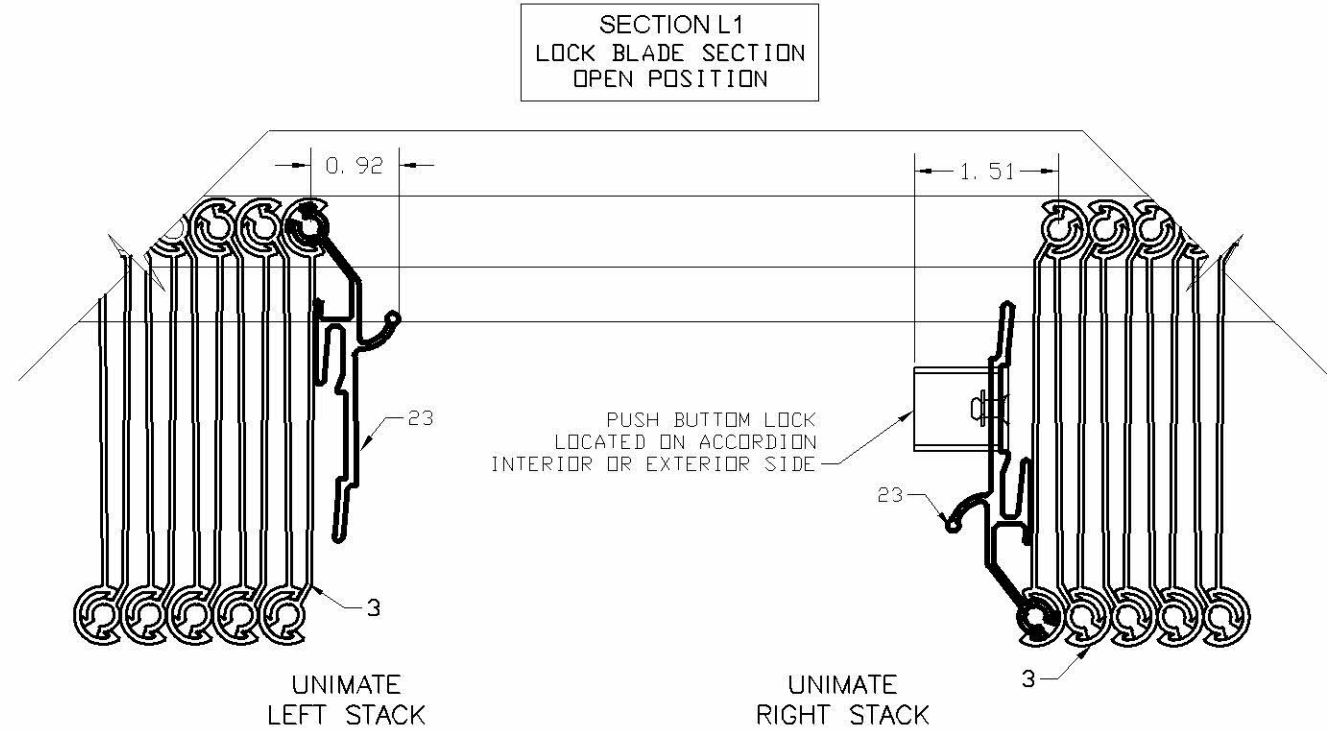
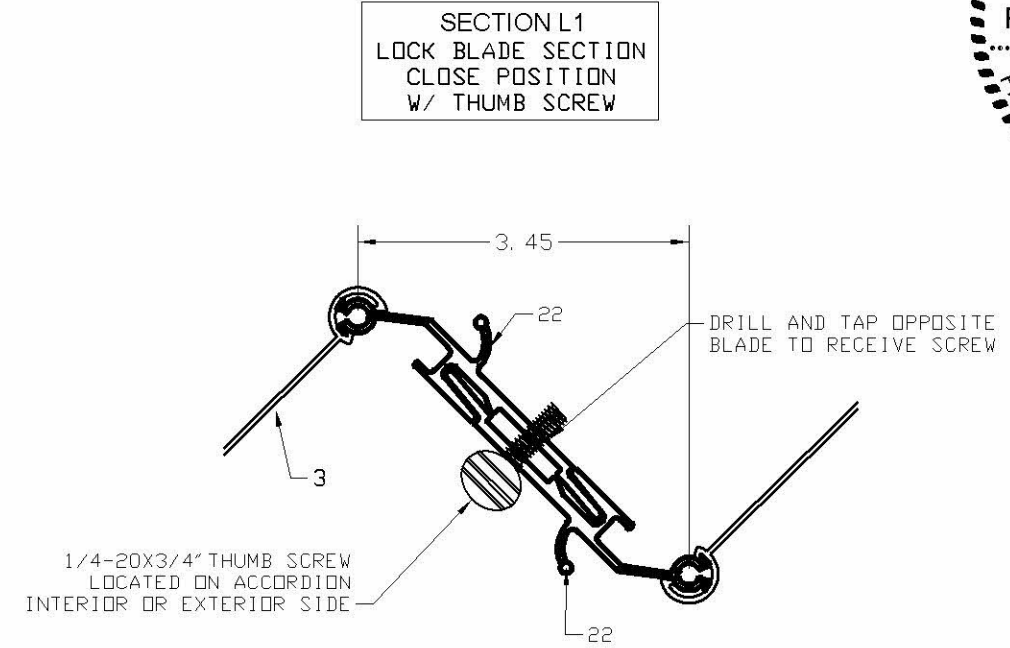
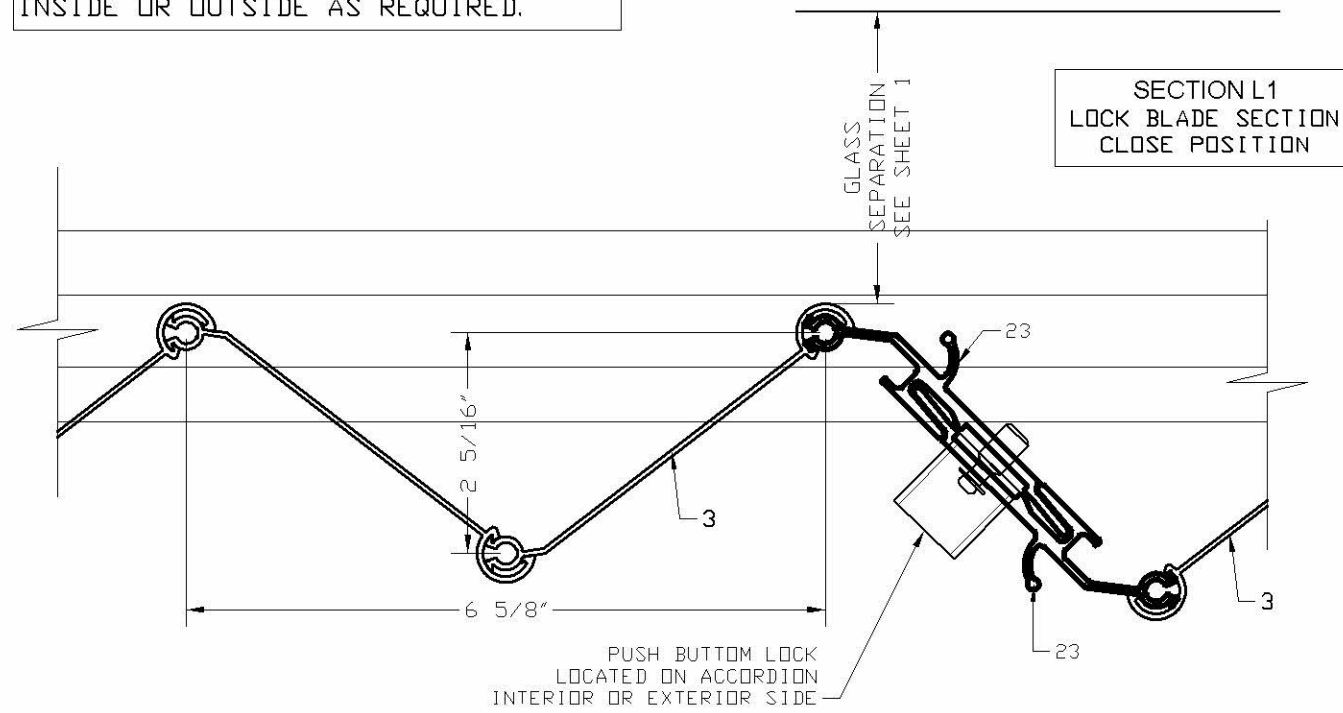
DRAWING #
19-072

SHEET
6 OF 9

Engineer Seal
Pedro De Figueiredo
TEXAS - PE 102937

TYPICAL HORIZONTAL UNIMATE LOCK SECTIONS

NOTE: SHUTTER CAN BE LOCKED FROM INSIDE OR OUTSIDE BY PLACING THE PUSH BUTTON LOCK OR THUMB SCREW INSIDE OR OUTSIDE AS REQUIRED.



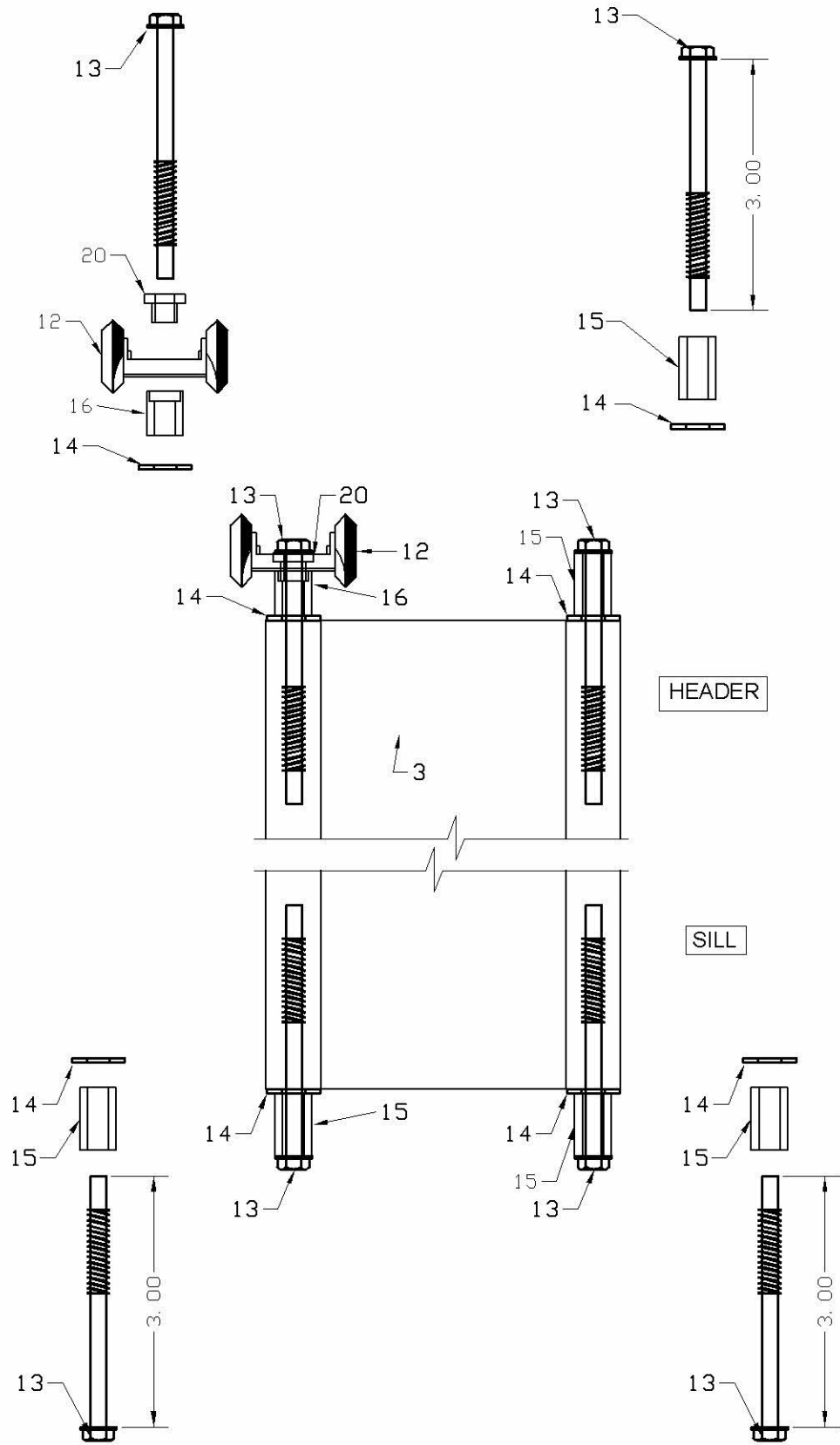
Engineering: **Eng'g Inc.**
 CR 11234
 9715 WEST BROWARD BLVD. 247
 PLANTATION - FLORIDA - 33324
 Engineer Seal
 Pedro De Figueiredo
 TEXAS - PE 102937

PRODUCT NAME:
CROCI
 EXTRUDED ALUMINUM
 ACCORDION SHUTTER

MANUFACTURER:
CROCI NORTH AMERICA
 11600 ADELMO LANE - FORT MYERS, FL 33966
 Tel.: (239) 278-3066 - Fax: (239) 278-5977

SCALE:
 NA
 DATE:
 10/15/2020
 DRAWING #
 19-072
 SHEET
 7 OF 9

TYPICAL BLADE ASSEMBLY



BILL OF MATERIALS

ITEM	DESCRIPTION	MATERIAL	MANUFACTURER
1	1" WALL MOUNT TRACK	6063-T6 ALUMINUM	CROCI
1A	2" WALL MOUNT TRACK	6063-T6 ALUMINUM	CROCI
1B	3" WALL MOUNT TRACK	6063-T6 ALUMINUM	CROCI
2	CEILING TRACK	6063-T6 ALUMINUM	CROCI
3	ACCORDION BLADE	6063-T6 ALUMINUM	CROCI
4	LOCK		
5	LOCK BLADE INSERT	6063-T6 ALUMINUM	CROCI
6	MALE LOCK BLADE	6063-T6 ALUMINUM	CROCI
7	FEMALE LOCK BLADE	6063-T6 ALUMINUM	CROCI
8	STARTER BLADE	6063-T6 ALUMINUM	CROCI
9	"A" TRACK	6063-T6 ALUMINUM	CROCI
10	ADJUSTABLE TRACK	6063-T6 ALUMINUM	CROCI
10A	ADJUST. CHANNEL	6063-T6 ALUMINUM	CROCI
10B	ADJUST. CHANNEL W/ FLANGE	6063-T6 ALUMINUM	CROCI
12	WHEEL CARRIER	PLATED STEEL/ NYLON	CROCI
13	1/4" X 3" SCREW BLADE	410 STAINLESS STEEL	CROCI
14	1/2" SS FLAT WASHER	STAINLESS STEEL	CROCI
15	1" X 7/16" BUSHING	NYLON	CROCI
16	1/2" X 7/8" WHEEL BUSHING	NYLON	CROCI
17	1/8" BUILT-OUT ANGLES	6063-T6 ALUMINUM	CROCI
18	1/4" - 2X3 ANGLE	6063-T6 ALUMINUM	CROCI
19	PUSH-BUTTON LOCK		
20	1/2" X 1/4" WHEEL SPACER	NYLON	CROCI
21	1" WALL MOUNT TRACK	6063-T6 ALUMINUM	CROCI
21A	2" WALL MOUNT TRACK	6063-T6 ALUMINUM	CROCI
21B	3" WALL MOUNT TRACK	6063-T6 ALUMINUM	CROCI
22	0.04" OPTIONAL COVER	ALUMINUM BREAK METAL	CROCI
23	UNIMATE LOCK BLADE	6063-T6 ALUMINUM	CROCI

ANCHOR SCHEDULE

ANCHOR	SUBSTRATE	DESCRIPTION	EMBED.	ED	S _{MIN}
A	3000 PSI CONCRETE	1/4" ss TAPCON BY ITW BUILDEX	1-3/4"	2-1/2"	3"
		1/4" ULTRACON BY DEWALT	1-3/4"	2-1/2"	3"
		1/4" AGGRE-GATOR BY DEWALT	1-3/4"	3"	3"
		1/4"-20 SOLID-SET BY HILLMAN	7/8"	2-1/2"	3"
B	CONCRETE GF BLOCK	1/4" ULTRACON BY DEWALT	1-3/4"	2-1/2"	4"
		1/4" AGGRE-GATOR BY DEWALT	2"	3"	3"
C	CONCRETE HOLLOW BLOCK	1/4" ss TAPCON BY ITW BUILDEX	1"	2-1/2"	3"
		1/4" ULTRACON BY DEWALT	1-1/4"	2-1/2"	3"
		1/4" AGGRE-GATOR BY DEWALT	1-1/4"	3"	3"
D	WOOD	1/4-14 ss SMS	1-1/2"	3/4"	3"
E	METAL	1/4-14 ss SMS	1/8"	3/4"	3"

NOTES:
 1- S_{min}- MINIMUM ANCHOR SPACING ALLOWABLE WITHOUT REDUCTION
 2- USE THESE ANCHORS IN CONJUNCTION WITH TABLES ON SHEETS 2, 3 AND 4
 3- ED: EDGE DISTANCE BEYOND WALL DRESSING
 4- EMBED.: ANCHOR EMBEDMENT INTO SUBSTRATE BEYOND WALL DRESSING
 5- WOOD SUBTRATE WITH MINIMUM 0.46 SG
 6- METAL: MINIMUM 1/8" THICK ASTM A36 STEEL OR 6063-T6 ALUMINUM



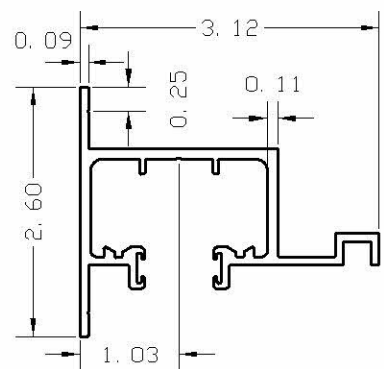
Engineering:
Eng'g Inc.
 CR 11234
 9715 WEST BROWARD BLVD. 247
 PLANTATION - FLORIDA - 33324

PRODUCT NAME:
CROCI
 EXTRUDED ALUMINUM
 ACCORDION SHUTTER

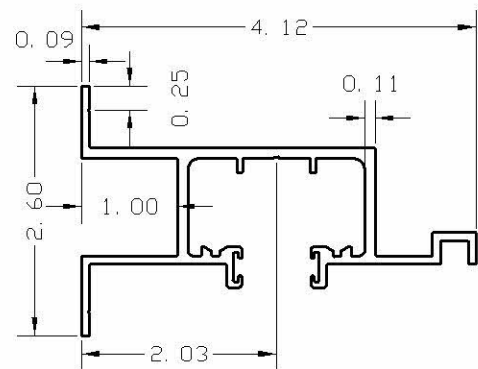
MANUFACTURER:
CROCI NORTH AMERICA
 11600 ADELMO LANE - FORT MYERS, FL 33966
 Tel.: (239) 278-3066 - Fax: (239) 278-5977

SCALE:
 NA
 DATE:
 10/15/2020
 DRAWING #
 19-072
 SHEET
 8 OF 9

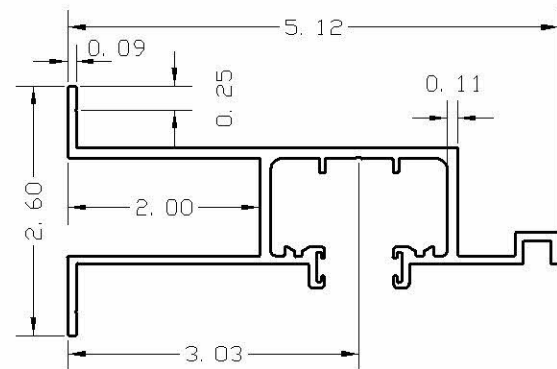
COMPONENTS



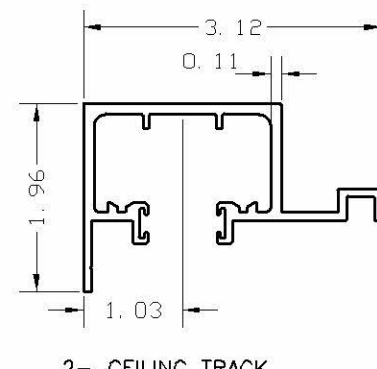
1- 1" WALL MOUNT TRACK



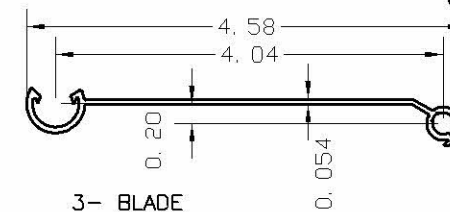
1A- 2" WALL MOUNT TRACK



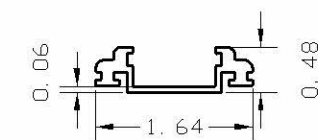
1B- 3" WALL MOUNT TRACK



2- CEILING TRACK

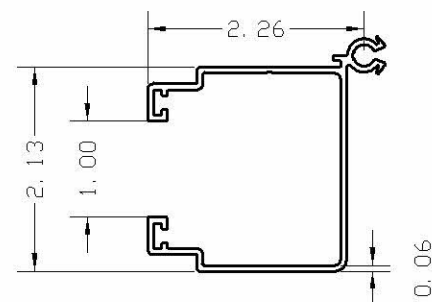


3- BLADE

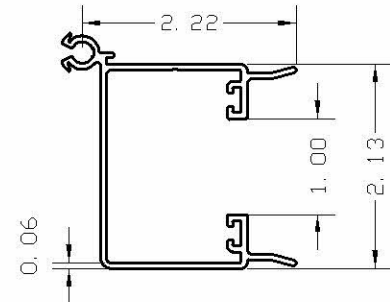


5- LOCK BLADE INSERT

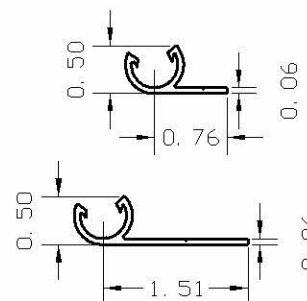
6- MALE LOCK STYLE



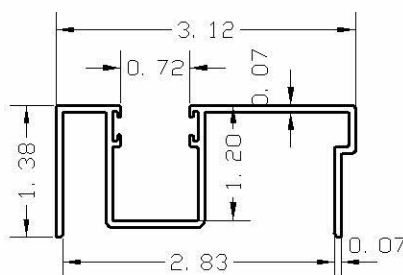
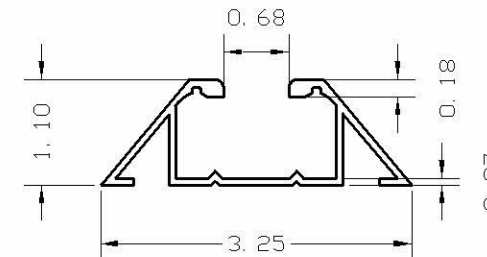
7- FEMALE LOCK STYLE



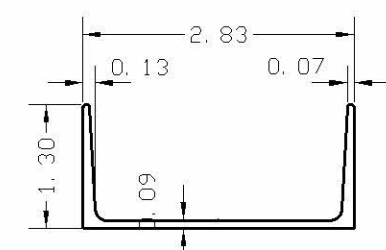
8- STARTER BLADES



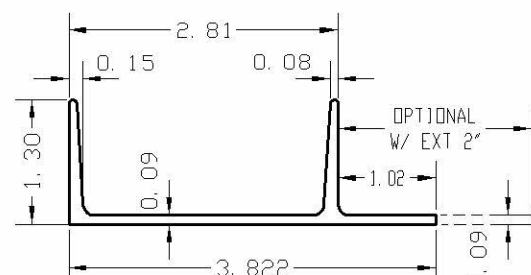
9- "A" TRACK



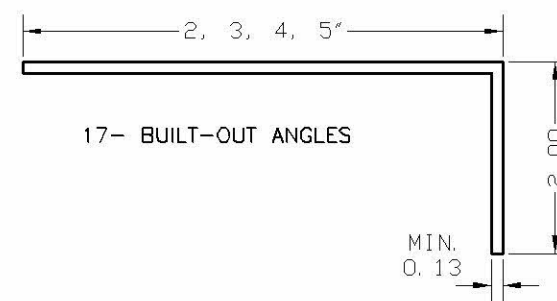
10-ADJUSTABLE SILL TRACK



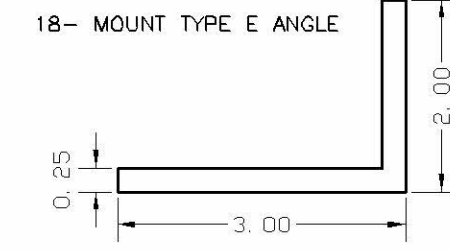
10A- ADJUSTABLE SILL CHANNEL



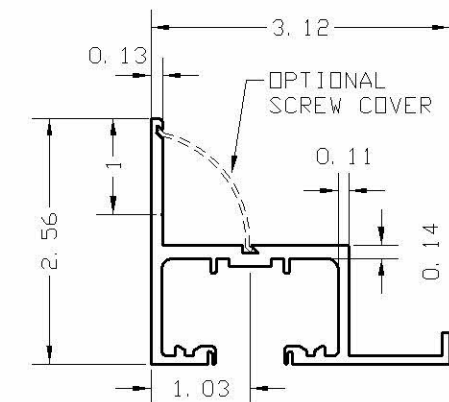
10B- ADJUSTABLE SILL CHANNEL W/ FLANGE
10B.1- ADJ. SILL CHANNEL W/ EXTENDED FLANGE



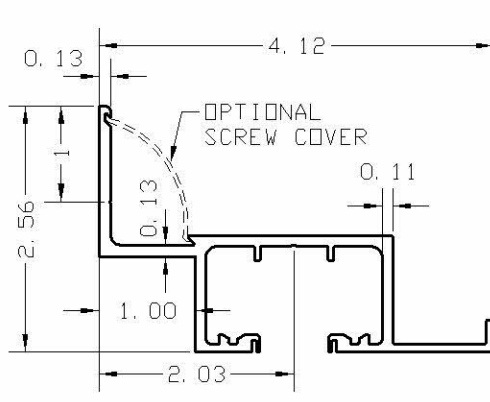
17- BUILT-OUT ANGLES



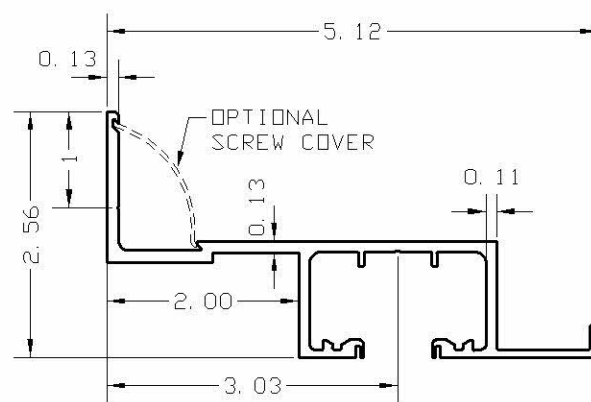
18- MOUNT TYPE E ANGLE



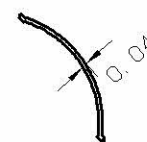
21- 1" WALL MOUNT TRACK



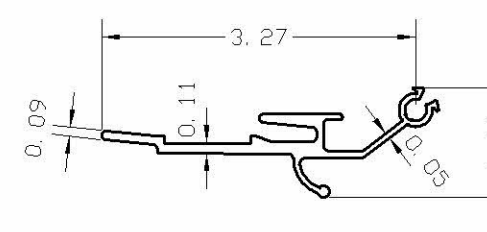
21A- 2" WALL MOUNT TRACK



21B- 3" WALL MOUNT TRACK



22- 0.04" BREAK METAL
OPTIONAL SCREW COVER



23- UNIMATE LOCK STYLE



Engineering:
Eng'g Inc.

CR 11234
9715 WEST BROWARD BLVD. 247
PLANTATION - FLORIDA - 33324
Texas - PE 102937

PRODUCT NAME:

CROCI

EXTRUDED ALUMINUM
ACCORDION SHUTTER

MANUFACTURER:

CROCI NORTH AMERICA

11600 ADELMO LANE - FORT MYERS, FL 33966
Tel.: (239) 278-3066 - Fax: (239) 278-5977

SCALE:

NA

DATE:

10/15/2020

DRAWING #

19-072

SHEET

9 OF 9