

**10300085 ALUMINUM MULLION NON REINFORCED**  
**LMI WIND ZONE 3**

**Maximum design pressure capacity (psf)**  
*Design pressures are positive and negative*

Mullion span (in)	Tributary width (in)								
	24.00	30.00	36.00	42.00	48.00	54.00	60.00	66.00	72.00
24.00	150.0	150.0	150.0	150.0	150.0	150.0	150.0	150.0	150.0
30.00	150.0	150.0	150.0	150.0	150.0	150.0	150.0	150.0	150.0
36.00	150.0	150.0	150.0	150.0	150.0	150.0	150.0	150.0	150.0
42.00	150.0	144.4	135.3	132.6	132.6	132.6	132.6	132.6	132.6
48.00	135.3	118.1	108.3	103.1	101.5	101.5	101.5	101.5	101.5
54.00	116.0	99.9	90.2	84.4	81.2	80.2	80.2	80.2	80.2
60.00	101.5	86.6	77.3	71.4	67.7	65.6	65.0	65.0	65.0
66.00	90.2	76.4	66.9	60.0	55.5	52.6	51.0	50.4	50.4
72.00	71.5	58.7	50.5	45.0	41.2	38.6	36.9	35.9	35.6
78.00	55.9	45.7	39.1	34.6	31.5	29.2	27.7	26.6	26.0
84.00	44.5	36.3	30.9	27.3	24.6	22.7	21.4	20.4	19.7
90.00	36.0	29.3	24.9	21.9	19.7	18.1	16.9	16.0	15.3
96.00	29.6	24.0	20.4	17.8	16.0	-	-	-	-
102.00	24.6	19.9	16.9	-	-	-	-	-	-
108.00	20.7	16.7	-	-	-	-	-	-	-
114.00	17.5	-	-	-	-	-	-	-	-
120.00	15.0	-	-	-	-	-	-	-	-

$$\text{TRIBUTARY WIDTH} = \frac{W1 + W2}{2}$$

NOTES:

1. THE PRODUCT SHOWN HEREIN IS DESIGNED AND MANUFACTURED TO COMPLY WITH REQUIREMENTS OF THE 2006 IBC AND WITH THE 2006 IRC WITH STATE OF TEXAS MODIFICATIONS AND WITH THE 2009 IBC, 2009 IRC, 2012 IBC, 2012 IRC, 2015 IBC AND 2015 IRC.
2. WOOD FRAMING AND MASONRY OPENING TO BE DESIGNED AND ANCHORED TO PROPERLY TRANSFER ALL LOADS TO STRUCTURE. FRAMING AND MASONRY OPENING IS THE RESPONSIBILITY OF THE ARCHITECT OR ENGINEER OF RECORD.
3. ALLOWABLE STRESS INCREASE OF 1/3 WAS NOT USED IN THE DESIGN OF THE PRODUCT SHOWN HEREIN. WIND LOAD DURATION FACTOR Cd=1.6 WAS USED FOR WOOD ANCHOR CALCULATIONS.
4. APPROVED IMPACT PROTECTIVE SYSTEM IS NOT REQUIRED FOR THIS PRODUCT IN WIND BORNE DEBRIS REGIONS.
5. DESIGN PRESSURE AND INSTALLATION DETAILS SHOWN IN THIS DOCUMENT APPLY ONLY TO THE MULLION. WINDOWS MUST BE APPROVED UNDER SEPARATE APPROVAL.
6. SINGLE UNITS TO BE MULLED ARE NOT LIMITED TO THOSE SHOWN IN THIS DRAWING. SINGLE UNITS TO BE MULLED TOGETHER MUST BE MANUFACTURED BY WINDOW MART.
7. DESIGN PRESSURE OF MULLED UNIT SHALL BE CONTROLLED BY THE LESSER DESIGN PRESSURE OF THE MULLION OR THE INDIVIDUAL WINDOW UNIT.
8. UNITS MAYBE MULLED VERTICALLY OR HORIZONTALLY.
9. UNITS MAYBE MULLED INDEFINITELY.

DESIGN PRESSURE TABLE INSTRUCTIONS:

- 1) DEFINE REQUIRED DESIGN LOAD PER INTERNATIONAL BUILDING CODE OR INTERNATIONAL RESIDENTIAL CODE.
- 2) DETERMINE TRIBUTARY WIDTH AND MULLION SPAN BASED ON PRODUCT TO BE INSTALLED. SEE FORMULA FOR TRIBUTARY WIDTH.
- 3) LOCATE MULLION SPAN (UNIT HEIGHT) AND TRIBUTARY WIDTH. AT THE INTERSECTION OF ROW AND COLUMN CONTAINING THE MULLION SPAN AND TRIBUTARY WIDTH RESPECTIVELY IS THE MULLION RATING FOR PRODUCT IN STEP 2. MULLION RATING MUST BE EQUAL OR GREATER THAN REQUIRED DESIGN PRESSURE OBTAINED IN STEP 1.

REVISIONS			
REV	DESCRIPTION	DATE	APPROVED

SIGNED: 08/01/2019

<b>WINDOW MART</b> 5760 ALBERT PIKE ROYAL, AR 71968		
10300085 ALUMINUM MULLION NON REINFORCED LMI WIND ZONE 3 ELEVATION, NOTES AND DESIGN PRESSURE CHART		
DRAWN: A.P.	DWG NO. 08-01920	REV -
SCALE NTS	DATE 02/12/13	SHEET 1 OF 4
L. ROBERTO LOMAS P.E. 1432 WOODFORD RD LEWISVILLE, NC 27023 434-688-0609 rllomas@rlomaspe.com		

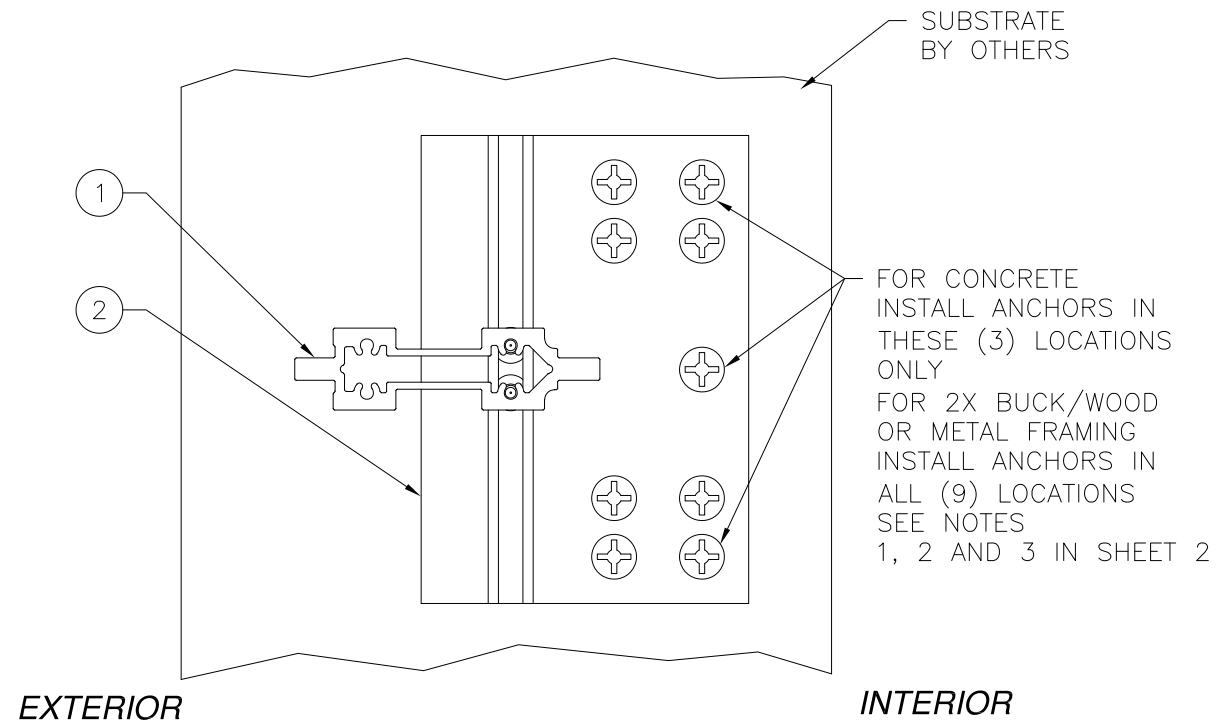


Luis R. Lomas P.E.  
TX No.: 101889

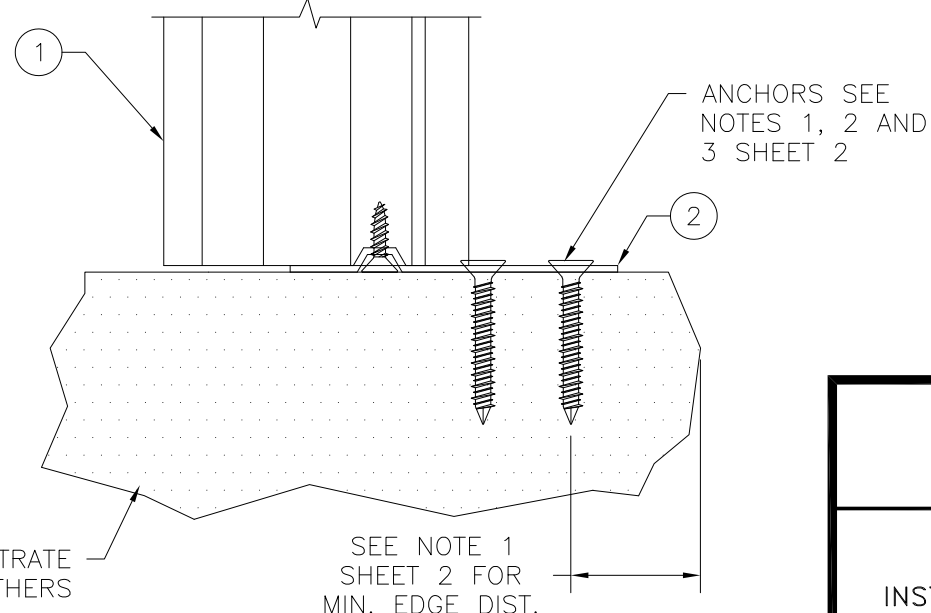
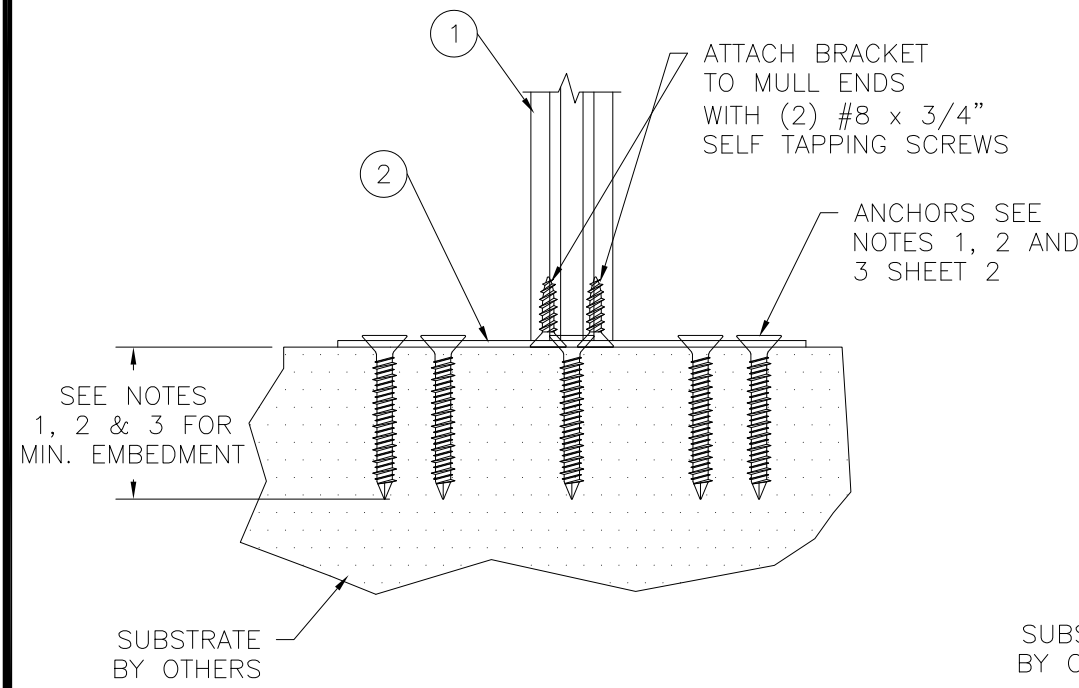
TABLE OF CONTENTS	
SHEET NO.	DESCRIPTION
1	ELEVATIONS, NOTES AND DESIGN PRESSURE CHART
2, 3	INSTALLATION DETAILS AND BILL OF MATERIALS
4	COMPONENTS

PARTS LIST				
NO.	PART NUMBER	DESCRIPTION	MANUFACTURER	MATERIAL
1	10300085	ALUMINUM VERTICAL MULLION	DECEUNINCK	ALUMINUM 6005-T5
2	10203000	15GA. STEEL MULLION BRACKET	DECEUNINCK	GALVANIZED STEEL
3	10300093	MULL CLIP	DECEUNINCK	ALUMINUM 6005-T5

REVISIONS			
REV	DESCRIPTION	DATE	APPROVED



- ANCHORING NOTES:
- 1) FOR ANCHORING MULLION BRACKET OR MULL CLIP INTO MASONRY/CONCRETE USE 3/16" ITW TAPCONS WITH SUFFICIENT LENGTH TO ACHIEVE A 1 3/4" MINIMUM EMBEDMENT INTO SUBSTRATE WITH 2 5/8" MINIMUM EDGE DISTANCE. LOCATE ANCHORS AS SHOWN IN ELEVATIONS AND INSTALLATION DETAILS.
  - 2) FOR ANCHORING MULLION BRACKET OR MULL CLIP INTO WOOD FRAMING OR 2X BUCK USE #10 WOOD SCREW WITH SUFFICIENT LENGTH TO ACHIEVE A 1 3/8" MINIMUM EMBEDMENT INTO SUBSTRATE. LOCATE ANCHORS AS SHOWN IN ELEVATIONS AND INSTALLATION DETAILS.
  - 3) FOR ANCHORING MULLION BRACKET OR MULL CLIP INTO 16GA. MINIMUM METAL FRAMING USE #10 SELF TAPPING SCREWS WITH SUFFICIENT LENGTH TO ACHIEVE A MINIMUM EMBEDMENT OF THREE THREADS PAST SUBSTRATE. LOCATE ANCHORS AS SHOWN IN ELEVATIONS AND INSTALLATION DETAILS.
  - 4) FOR ATTACHING WINDOW UNITS TO MULLION USE #10 SELF DRILLING SCREWS WITH SUFFICIENT LENGTH TO ACHIEVE A MINIMUM EMBEDMENT OF THREE THREADS PAST THE MULLION WALL. LOCATE SCREWS 6" FROM EACH MULLION END AND 24" MAX. O.C. THEREAFTER. STAGGER SCREWS AT EACH WINDOW.
  - 5) FOR WINDOW UNIT ANCHORING SCHEDULE TO SUBSTRATE REFER TO INDIVIDUAL WINDOW APPROVAL INSTALLATION INSTRUCTIONS.
  - 6) ALL FASTENERS TO BE CORROSION RESISTANT.
  - 7) INSTALLATION ANCHORS SHALL BE INSTALLED IN ACCORDANCE WITH ANCHOR MANUFACTURER'S INSTALLATION INSTRUCTIONS, AND ANCHORS SHALL NOT BE USED IN SUBSTRATES WITH STRENGTHS LESS THAN THE MINIMUM STRENGTH SPECIFIED BELOW:  
 A. WOOD - MINIMUM SPECIFIC GRAVITY OF G=0.42  
 B. CONCRETE - MINIMUM COMPRESSIVE STRENGTH OF 2,000 PSI.  
 C) METAL FRAMING - 16GA. MINIMUM.



**STEEL MULLION BRACKET 10203000  
INSTALLATION DETAILS  
SILL AND HEAD TYP.**

**WINDOW MART**  
5760 ALBERT PIKE  
ROYAL, AR 71968

10300085 ALUMINUM MULLION  
NON REINFORCED LMI WIND ZONE 3  
INSTALLATION DETAILS AND BILL OF MATERIALS

DRAWN: A.P.	DWG NO. 08-01920	REV -
SCALE NTS	DATE 02/12/13	SHEET 2 OF 4

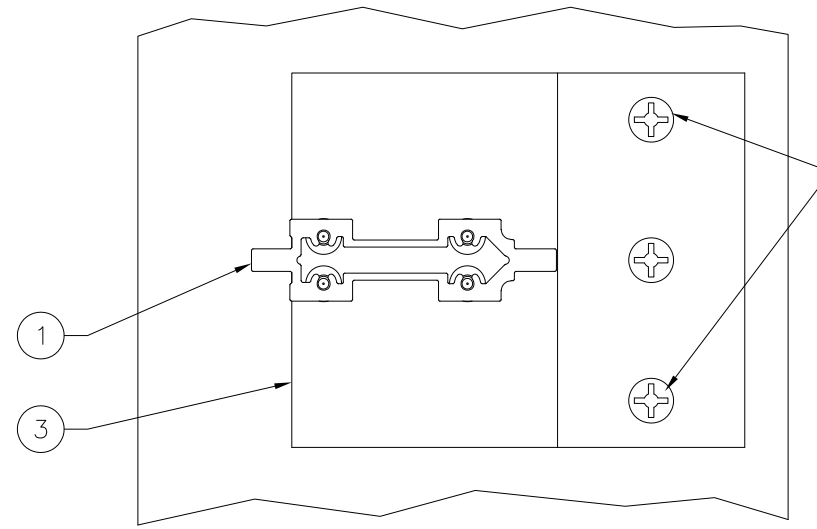
L. ROBERTO LOMAS P.E.  
1432 WOODFORD RD LEWISVILLE, NC 27023  
434-688-0609 rllomas@lrlomaspe.com

SIGNED: 08/01/2019

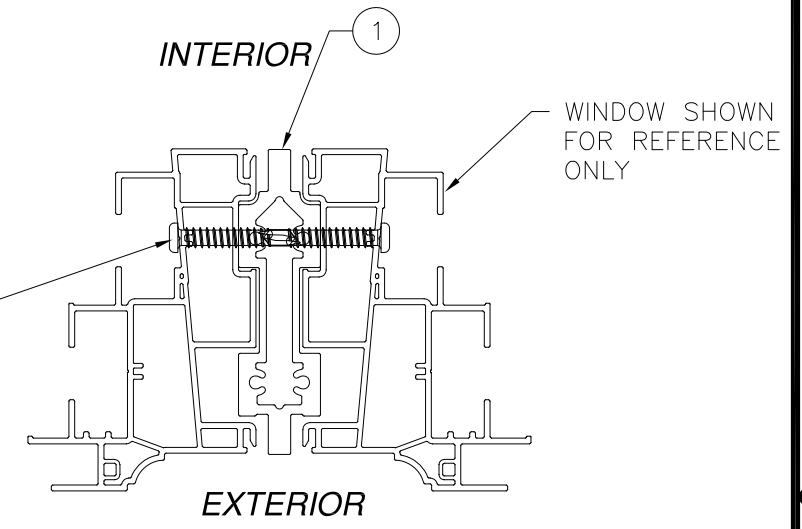


Luis R. Lomas P.E.  
TX No.: 101889

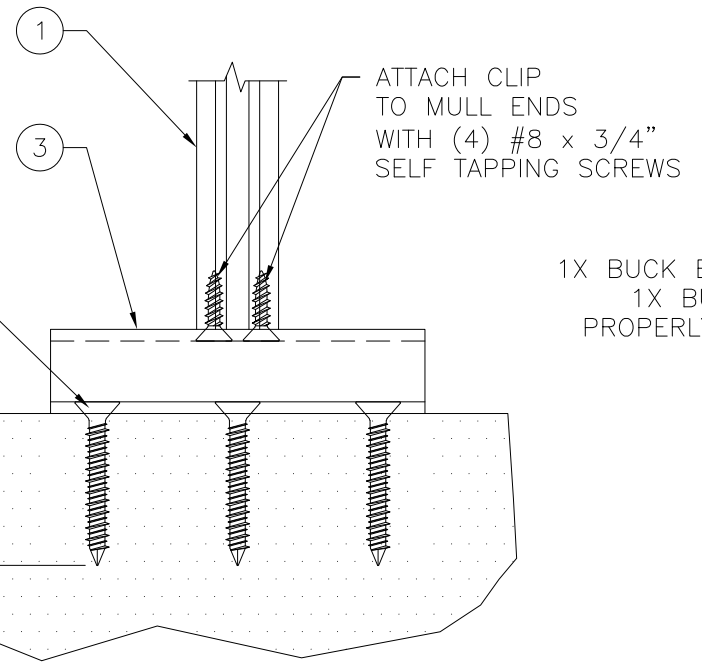
REVISIONS			
REV	DESCRIPTION	DATE	APPROVED



FOR CONCRETE:  
INSTALL ANCHORS IN  
THESE (2) LOCATIONS  
ONLY  
FOR 2X BUCK/WOOD  
OR METAL FRAMING:  
INSTALL ANCHORS IN  
ALL (3) LOCATIONS  
SEE NOTES  
1, 2 AND 3 IN SHEET 2



**WINDOW TO MULLION INSTALLATION DETAIL**



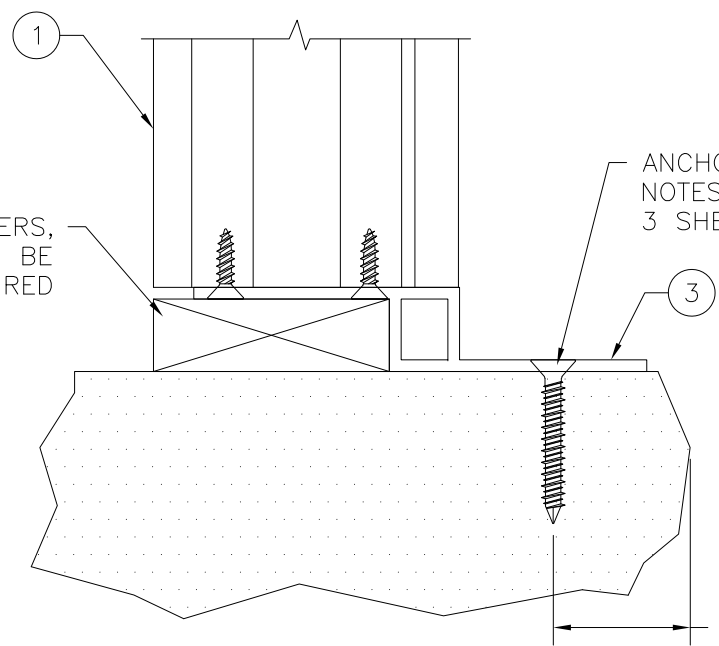
ATTACH CLIP  
TO MULL ENDS  
WITH (4) #8 x 3/4"  
SELF TAPPING SCREWS

ANCHORS SEE  
NOTES 1, 2 AND  
3 SHEET 2

SEE NOTES 1,  
2 & 3 SHEET 2  
FOR MIN.  
EMBEDMENT

SUBSTRATE  
BY OTHERS

1X BUCK BY OTHERS,  
1X BUCK TO BE  
PROPERLY SECURED



ANCHORS SEE  
NOTES 1, 2 AND  
3 SHEET 2

SEE NOTE 1  
SHEET 2 FOR  
MIN. EDGE DIST.

#10 SELF  
DRILLING SCREW  
SEE NOTE 4  
SHEET 2

**ALTERNATE MULL CLIP 10300093  
INSTALLATION DETAILS  
SILL AND HEAD TYP.**

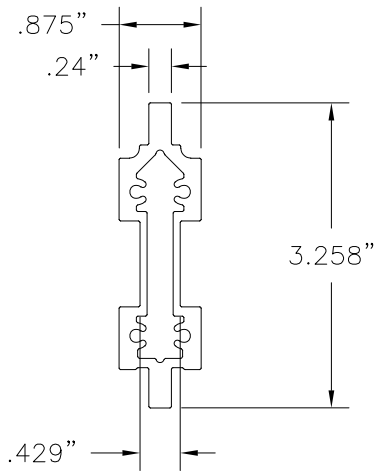
SIGNED: 08/01/2019

WINDOW MART 5760 ALBERT PIKE ROYAL, AR 71968		
10300085 ALUMINUM MULLION NON REINFORCED LMI WIND ZONE 3 INSTALLATION DETAILS		
DRAWN: A.P.	DWG NO. 08-01920	REV -
SCALE NTS	DATE 02/12/13	SHEET 3 OF 4
L. ROBERTO LOMAS P.E. 1432 WOODFORD RD LEWISVILLE, NC 27023 434-688-0609 rllomas@rlomaspe.com		

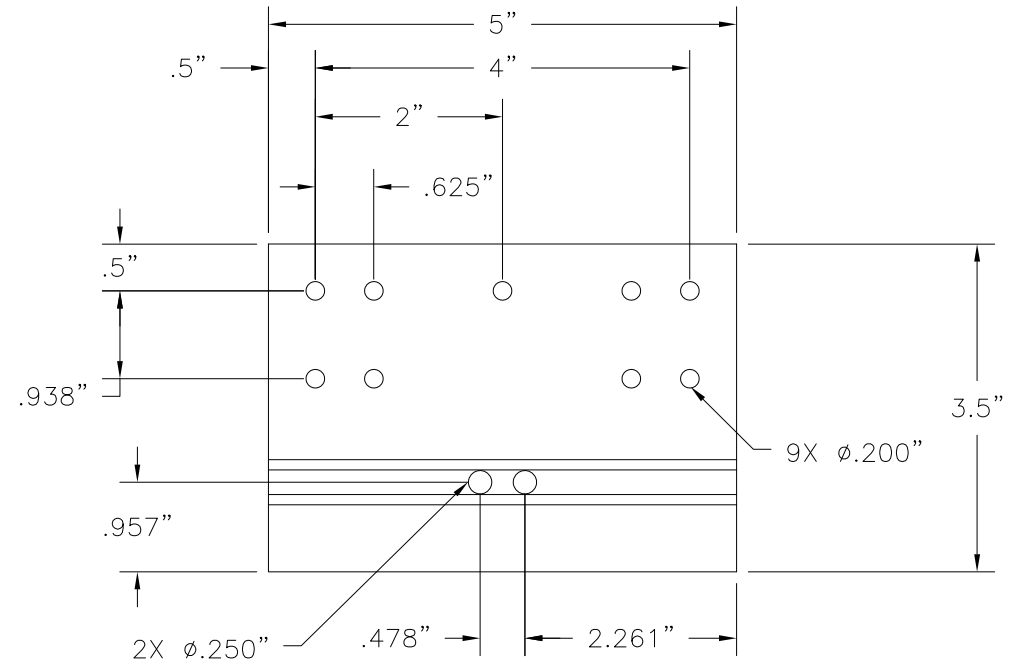


Luis R. Lomas P.E.  
TX No.: 101889

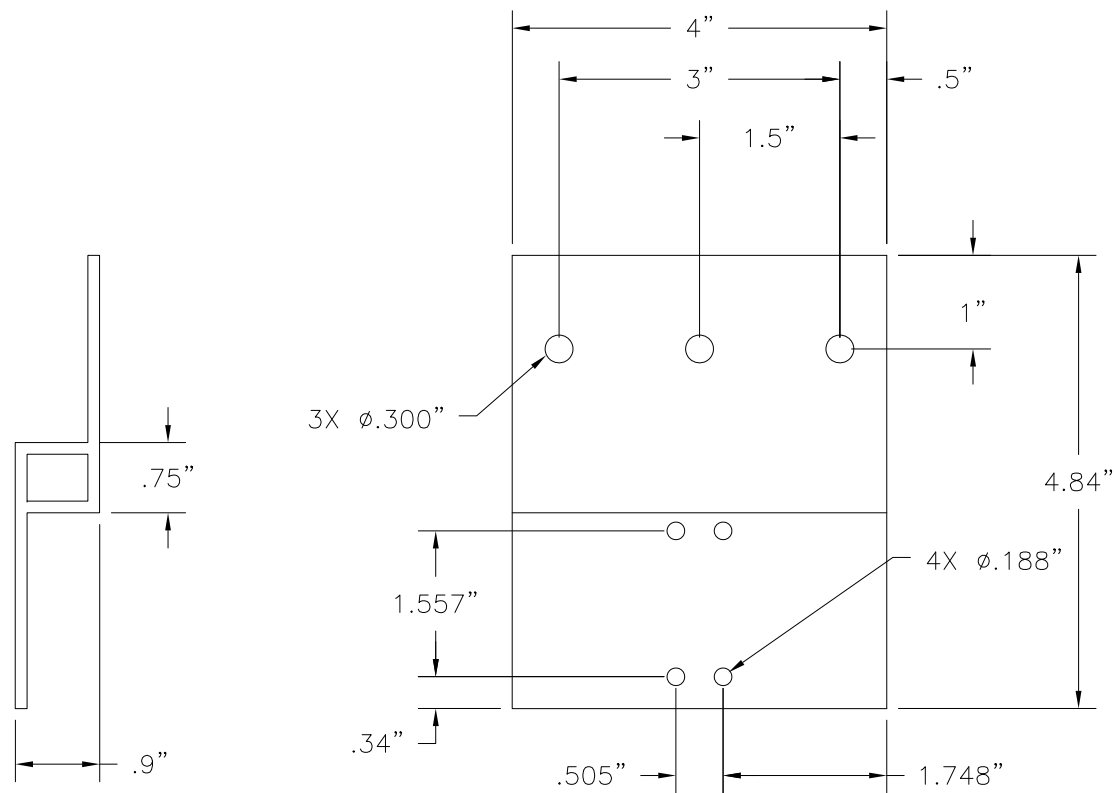
REVISIONS			
REV	DESCRIPTION	DATE	APPROVED



① **10300085 ALUMINUM MULLION**  
ALUMINUM 6005-T5 .075" THICK MINIMUM



② **STEEL MULLION BRACKET**  
15GA. GALVANIZED STEEL



③ **MULL CLIP**  
ALUMINUM 6005-T5 .125" THICK

SIGNED: 08/01/2019

<b>WINDOW MART</b> 5760 ALBERT PIKE ROYAL, AR 71968		
10300085 ALUMINUM MULLION NON REINFORCED LMI WIND ZONE 3 COMPONENTS		
DRAWN: A.P.	DWG NO. 08-01920	REV -
SCALE NTS	DATE 02/12/13	SHEET 4 OF 4
L. ROBERTO LOMAS P.E. 1432 WOODFORD RD LEWISVILLE, NC 27023 434-688-0609 rllomas@rlomaspe.com		



Luis R. Lomas P.E.  
TX No.: 101889