

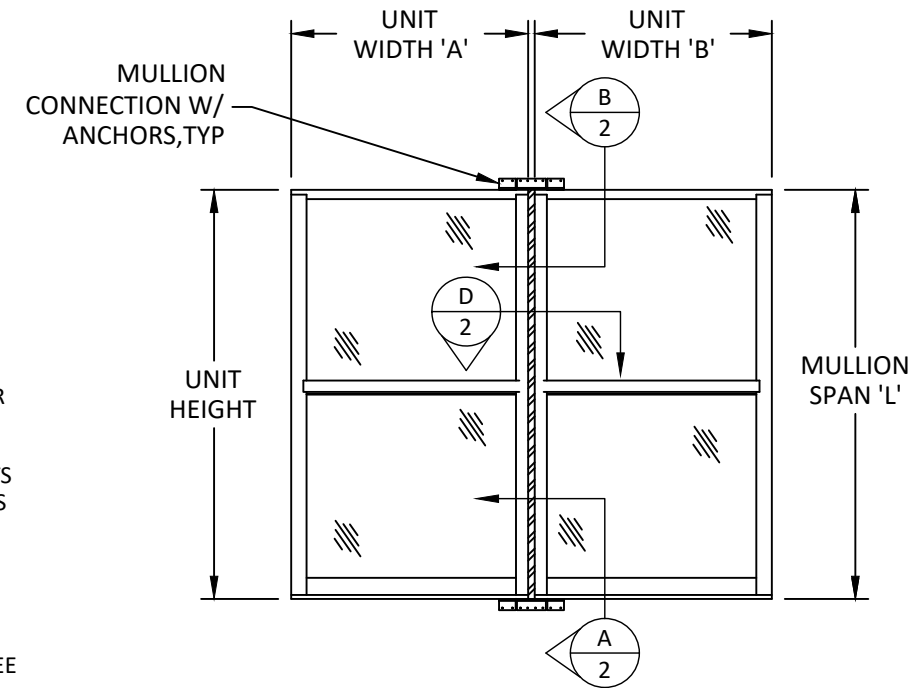
PLY GEM WINDOWS

SERIES 1500 BEVELED FRAME MULLION (IMPACT)

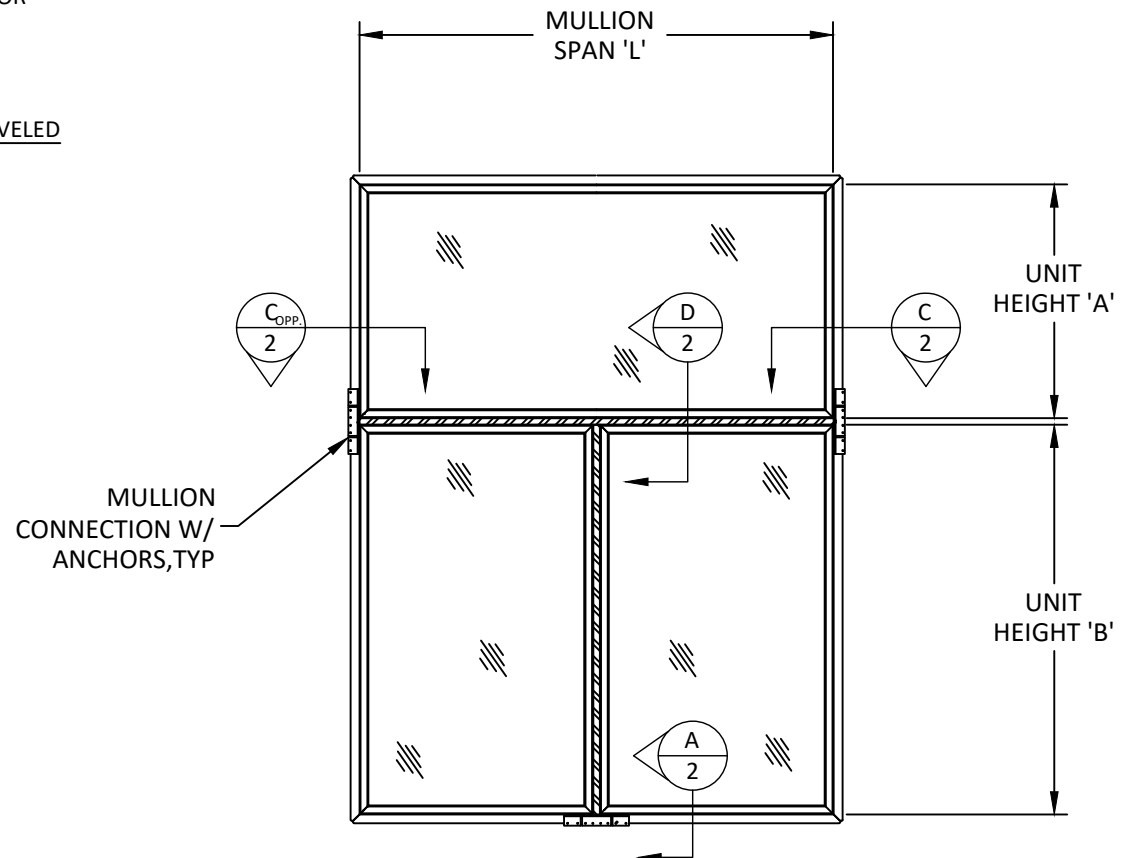
NOTES:

- THE PRODUCT SHOWN HEREIN IS DESIGNED AND MANUFACTURED TO COMPLY WITH THE 2018 INTERNATIONAL BUILDING CODE (IBC) AND INTERNATIONAL RESIDENTIAL CODE (IRC) AND HAS BEEN EVALUATED ACCORDING TO THE FOLLOWING:
 - AAMA 450-10
- MULLION INSTALLATION DETAILS APPLY TO PLY GEM SERIES 1500 BEVELED FRAME MULLION WHEN USED TO MULL WINDOWS WITH A ONE-WAY OR TWO-WAY MULLION USING THE INSTALLATION METHODS SHOWN HEREIN.
- APPROVED IMPACT PROTECTIVE SYSTEM IS NOT REQUIRED FOR THIS PRODUCT IN WIND BORNE DEBRIS REGIONS ZONE 3 OR LESS. INDIVIDUAL UNITS MUST BE IMPACT RATED OR PROTECTED WITH AN APPROVED IMPACT PROTECTIVE SYSTEM WHEN INSTALLED IN AREAS WHERE WINDBORNE DEBRIS PROTECTION IS REQUIRED.
- USE #8 WOOD SCREWS OF SUFFICIENT LENGTH TO ACHIEVE MINIMUM EMBEDMENT OF 1 1/2" INTO WOOD FRAMING. (SEE CHARTS & NOTES ON SHEETS 4 & 5 FOR DESIGN PRESSURE AND ANCHOR NOTES).
- USE 3/16" ITW TAPCON SCREWS OF SUFFICIENT LENGTH TO ACHIEVE MINIMUM EMBEDMENT OF 1 1/2" INTO CONCRETE/MASONRY SUBSTRATE. (SEE CHARTS & NOTES ON SHEETS 4 & 5 FOR DESIGN PRESSURE AND ANCHOR NOTES).
- USE #8 GRADE 5 SELF-TAPPING SCREWS OF SUFFICIENT LENGTH TO ACHIEVE A MINIMUM (3) THREAD PENETRATION BEYOND STEEL SUBSTRATE. (SEE CHARTS & NOTES ON SHEETS 4 & 5 FOR DESIGN PRESSURE AND ANCHOR NOTES).
- ADEQUACY OF THE EXISTING STRUCTURAL CONCRETE/MASONRY, 2X FRAMING, OR STEEL FRAMING AS A MAIN WIND FORCE RESISTING SYSTEM CAPABLE OF WITHSTANDING AND TRANSFERRING APPLIED PRODUCT LOADS TO THE FOUNDATION IS THE RESPONSIBILITY OF THE ENGINEER OR ARCHITECT OF RECORD FOR THE PROJECT OF INSTALLATION.
- SEE CHARTS & NOTES ON SHEETS 4-5 FOR DESIGN PRESSURE.
- THIS MULLION IS ONLY VALID WHEN USED IN CONJUNCTION WITH APPLICABLE PLY GEM SERIES 1500 WINDOW PRODUCTS UTILIZING THE BEVELED FRAME COMPONENT SHOWN HEREIN.
- ALL WINDOWS USED WITH THIS MULLION SHALL BE QUALIFIED UNDER SEPARATE APPROVAL.
- MULLION MATERIAL: PVC
- MULLION REINFORCEMENT MATERIAL: HSLA 50 GALVANIZED STEEL
- INSTALLATION ANCHOR CAPACITIES FOR PRODUCTS HEREIN ARE BASED ON SUBSTRATE MATERIALS WITH THE FOLLOWING PROPERTIES:
 - WOOD - MINIMUM SPECIFIC GRAVITY OF 0.42.
 - CONCRETE -MINIMUM COMPRESSIVE STRENGTH OF 3000 PSI.
 - GROUT-FILLED CMU- UNIT STRENGTH CONFORMS TO ASTM C-90 WITH MINIMUM COMPRESSIVE STRENGTH OF 2000 PSI AND GROUT CONFORMS TO ASTM C 476, MINIMUM GROUT COMPRESSIVE STRENGTH OF 2000 PSI.
 - HOLLOW BLOCK CMU - UNIT STRENGTH CONFORMS TO ASTM C-90 WITH MINIMUM COMPRESSIVE STRENGTH OF 2000 PSI.
 - STEEL - MINIMUM YIELD STRENGTH OF 33 KSI. MINIMUM 18 GA. WALL THICKNESS.

TABLE OF CONTENTS	
SHEET	SHEET DESCRIPTION
1	MULLION ASSEMBLY ELEVATIONS & NOTES
2	MULLION SECTION DETAILS
3	ANCHORAGE METHOD DETAILS
4	ONE-WAY MULLION DESIGN PRESSURE CHARTS
5	TWO-WAY MULLION DESIGN PRESSURE CHARTS
6	COMPONENTS & BILL OF MATERIALS



ONE-WAY MULLION EXAMPLE



TWO-WAY MULLION EXAMPLE



433 N. MAIN ST., PO BOX 559,
ROCKY MOUNT, VA 24151
PH: 540-484-6348 FX: 540-484-6683

TITLE: SERIES 1500 BEVELED FRAME MULLION (IMPACT)
MULLION ASSEMBLY ELEVATIONS & NOTES

PREPARED BY: BUILDING DROPS, INC.
398 E. DANIA BEACH BLVD., STE. 338
DANIA BEACH, FL 33004
PH: (954) 399-8478
FAX: (954) 744-4738
WEB: www.buildingdrops.com



REMARKS	BY	DATE
REV. ANCHOR CLIP	MS	08.16
TDI COMMENTS	RL	12.16
2018 IBC UPDATE	CA	08.22

THE INSTALLATION DETAILS DESCRIBED HEREIN ARE GENERIC AND MAY NOT REFLECT ACTUAL CONDITIONS FOR A SPECIFIC SITE. IF SITE CONDITIONS CAUSE INSTALLATION TO DEVIATE FROM THE REQUIREMENTS DETAILED HEREIN, A LICENSED ENGINEER OR ARCHITECT SHALL PREPARE SITE SPECIFIC DOCUMENTS FOR USE WITH THIS DOCUMENT.



DATE: 08.24.22

DWG. BY: CA CHK. BY: HFN

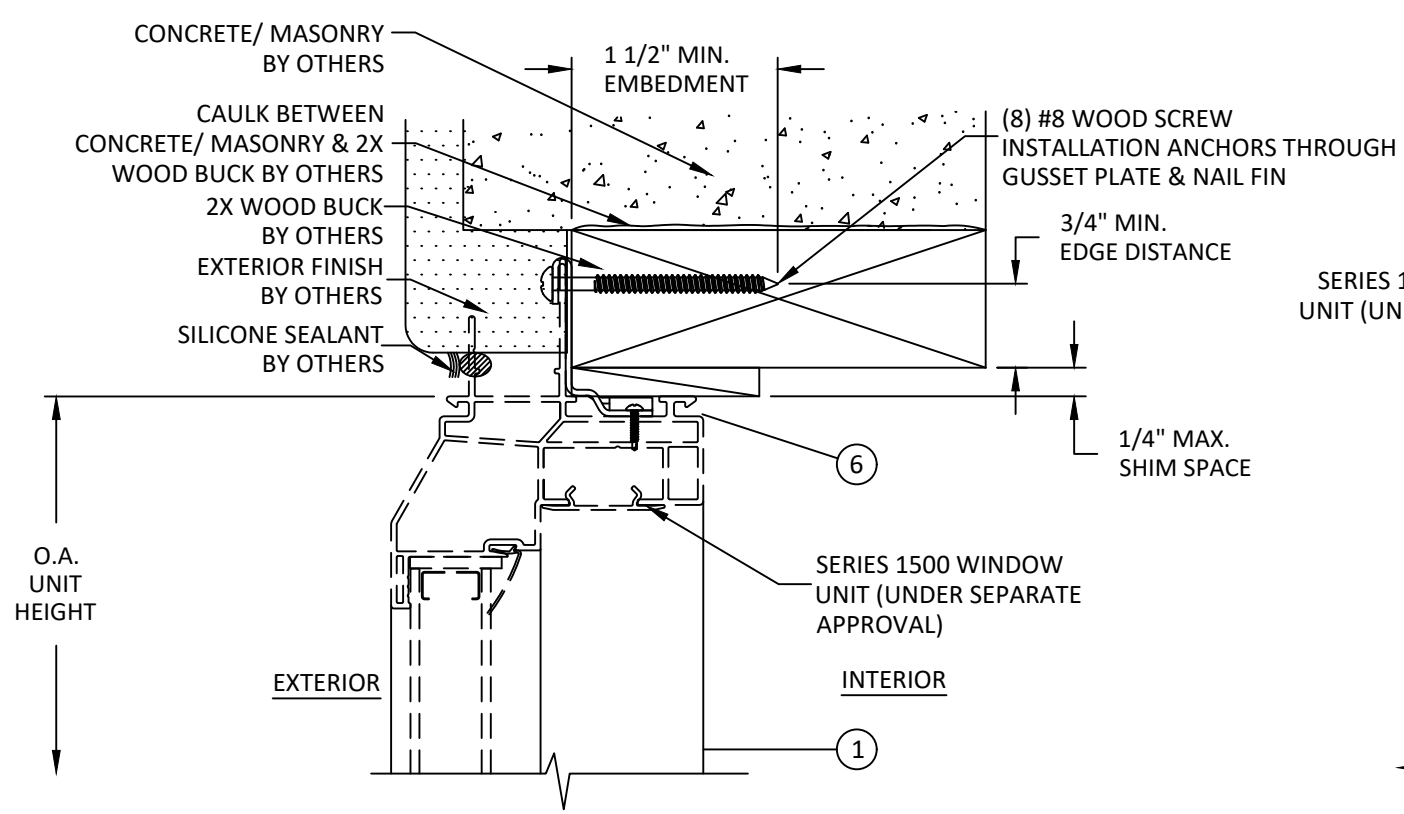
SCALE: NTS

DWG. #: PGW196

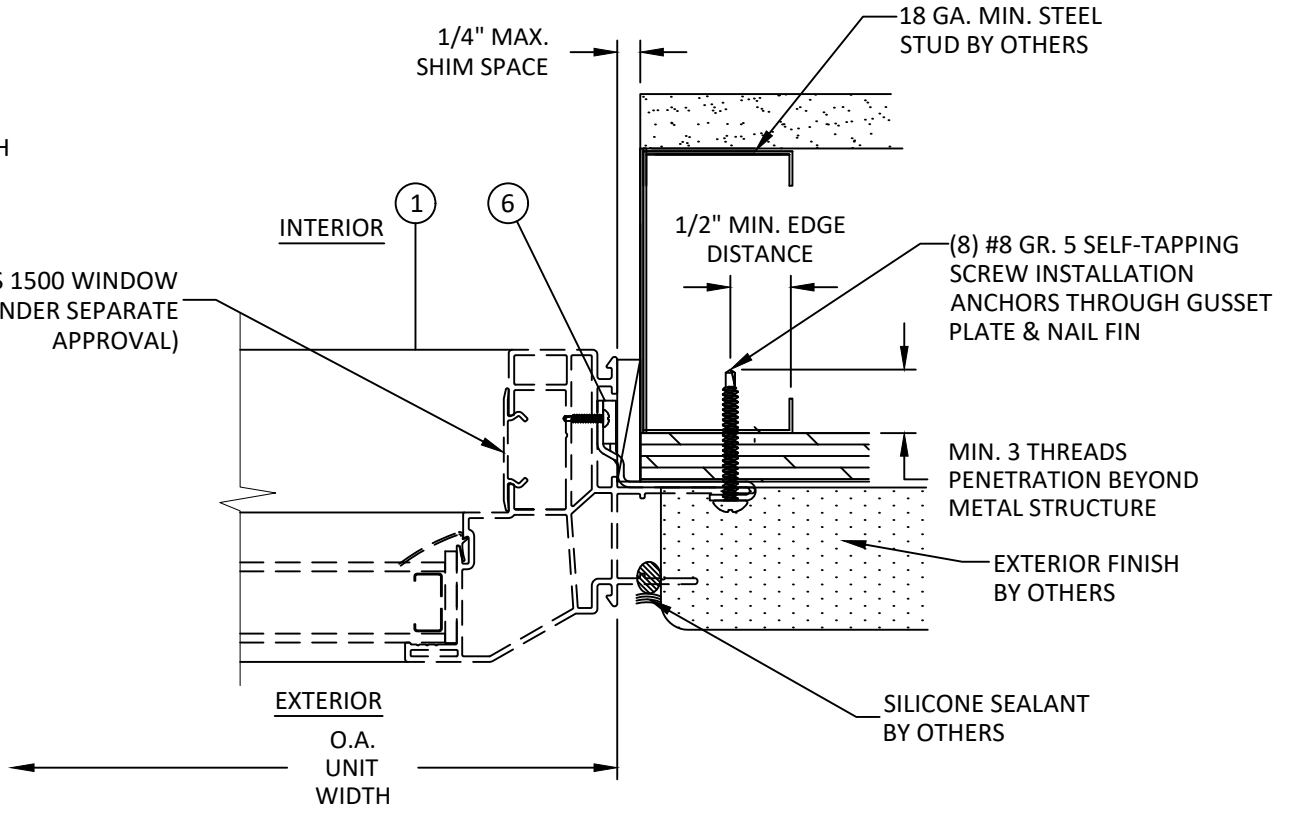
SHEET: 1 OF 6

9/26/2022 12:45 PM

j:\projects\ply_gem_windows\tdi-22-0830 - tdi submittal - series 1500 beveled frame and brickmould frame mullions.dwg\beveled_gpw196-09-07.dwg

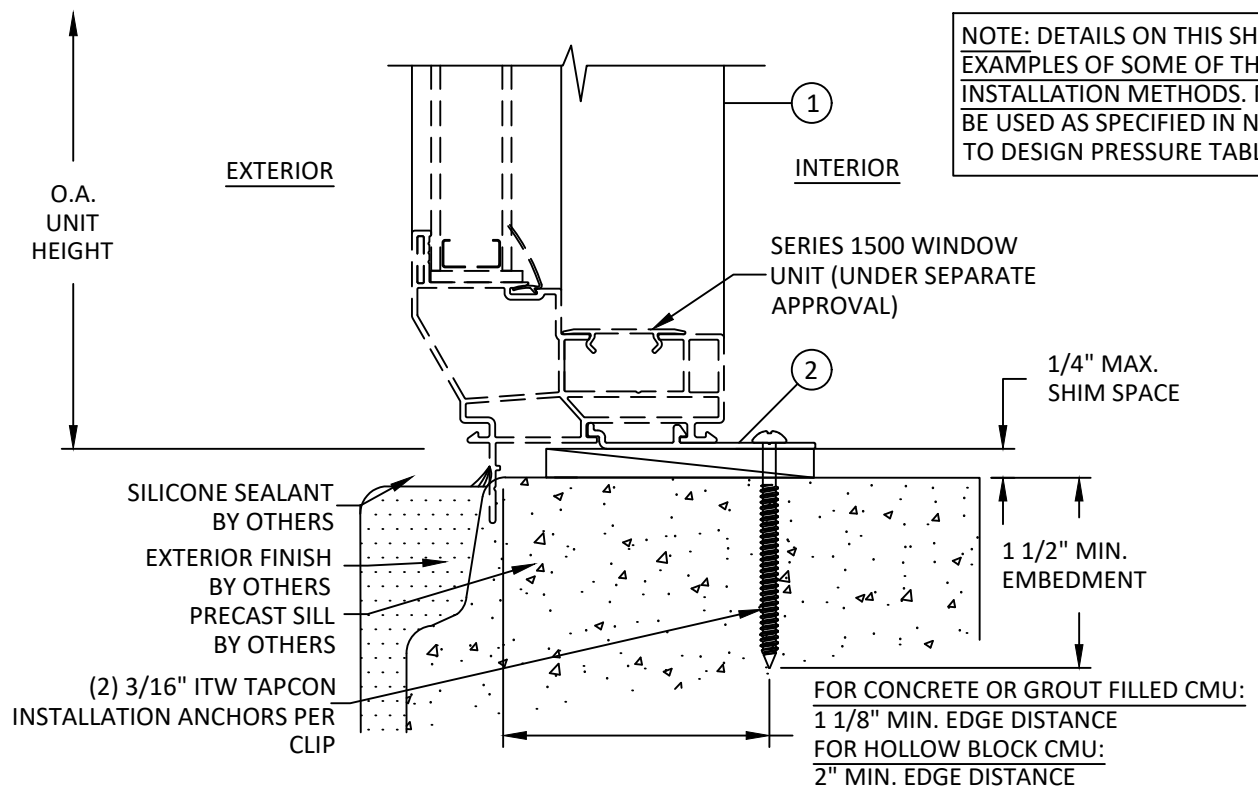


B
2 **VERTICAL SECTION**
2X WOOD BUCK
NAIL FIN & GUSSET PLATE INSTALLATION

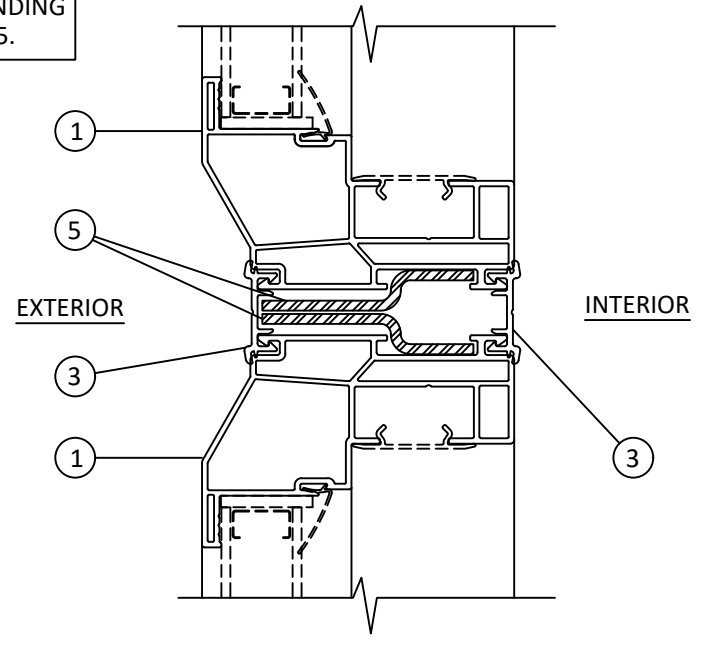


C
2 **HORIZONTAL SECTION**
STEEL STUD
NAIL FIN & GUSSET PLATE INSTALLATION

NOTE: DETAILS ON THIS SHEET REPRESENT EXAMPLES OF SOME OF THE AVAILABLE INSTALLATION METHODS. METHODS SHOWN MAY BE USED AS SPECIFIED IN NOTES CORRESPONDING TO DESIGN PRESSURE TABLES ON SHEETS 4-5.



A
2 **VERTICAL SECTION**
MASONRY/CONCRETE
ANCHOR CLIP INSTALLATION



D
2 **CROSS SECTION**
MULLION
TYPICAL



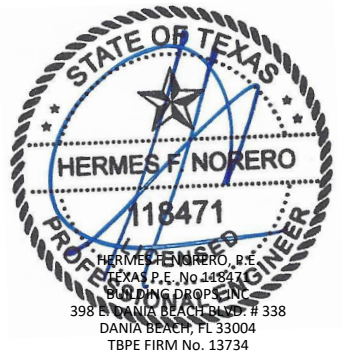
433 N. MAIN ST., PO BOX 559,
ROCKY MOUNT, VA 24151
PH: 540-484-6348 FX: 540-484-6683

TITLE: SERIES 1500 BEVELED
FRAME MULLION
(IMPACT)
MULLION SECTION
DETAILS

PREPARED BY:
BUILDING DROPS, INC.
398 E. DANIA BEACH BLVD., STE. 338
DANIA BEACH, FL 33004
PH: (954) 399-8478
FAX: (954) 744-4738
WEB: www.buildingdrops.com

REMARKS	BY	DATE
REV. ANCHOR CLIP	MS	08.16
TDI COMMENTS	RL	12.16
2018 IBC UPDATE	CA	08.22

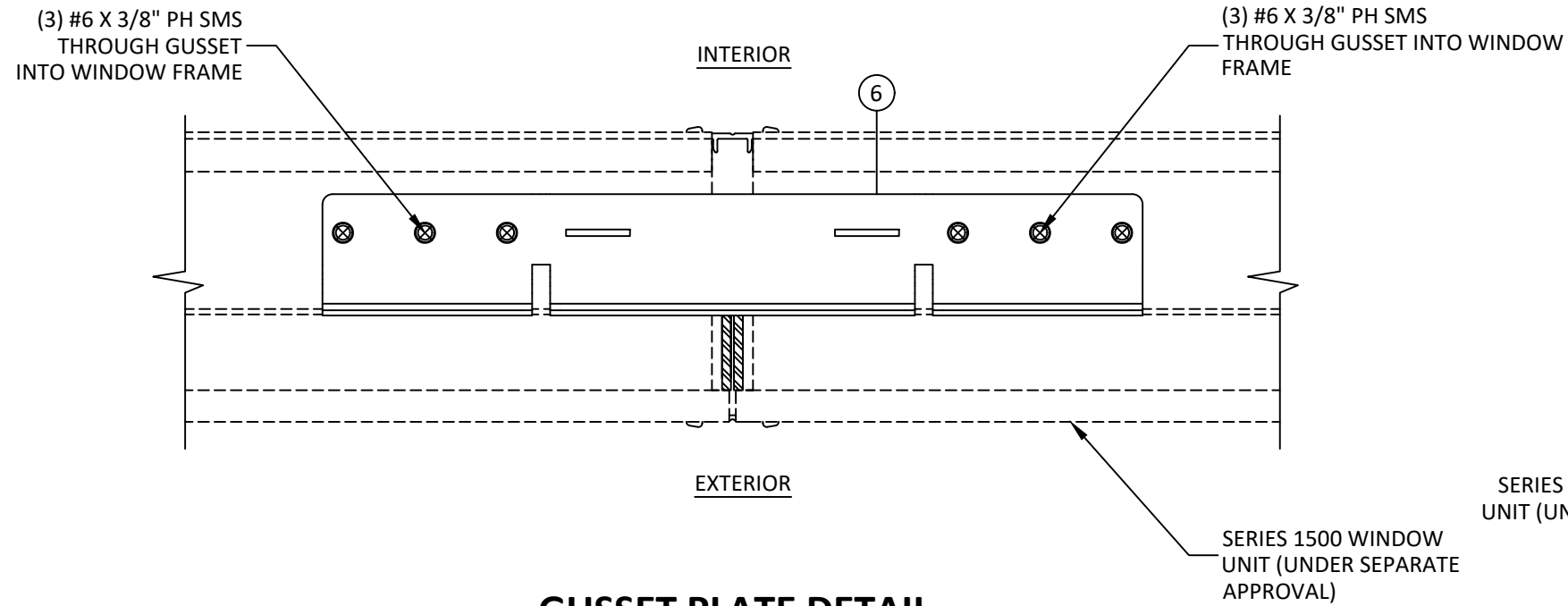
THE INSTALLATION DETAILS DESCRIBED HEREIN ARE GENERIC AND MAY NOT REFLECT ACTUAL CONDITIONS FOR A SPECIFIC SITE. IF SITE CONDITIONS CAUSE INSTALLATION TO DEVIATE FROM THE REQUIREMENTS DETAILED HEREIN, A LICENSED ENGINEER OR ARCHITECT SHALL PREPARE SITE SPECIFIC DOCUMENTS FOR USE WITH THIS DOCUMENT.



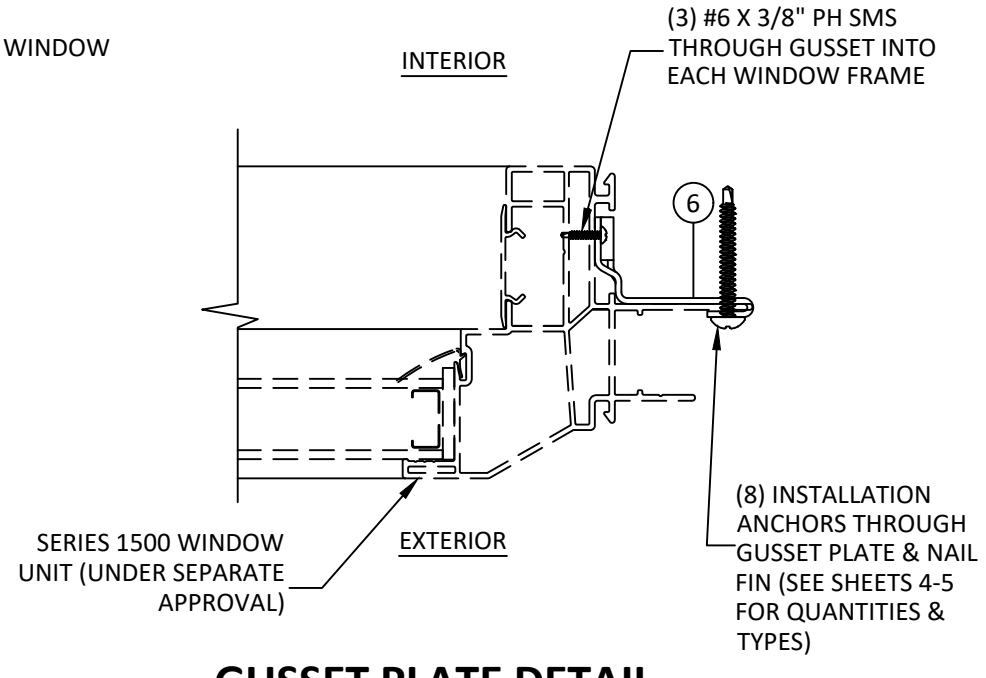
DATE:	08.24.22	
DWG. BY:	CA	CHK. BY: HFN
SCALE:	NTS	
DWG. #:	PGW196	

SHEET:
2
OF 6

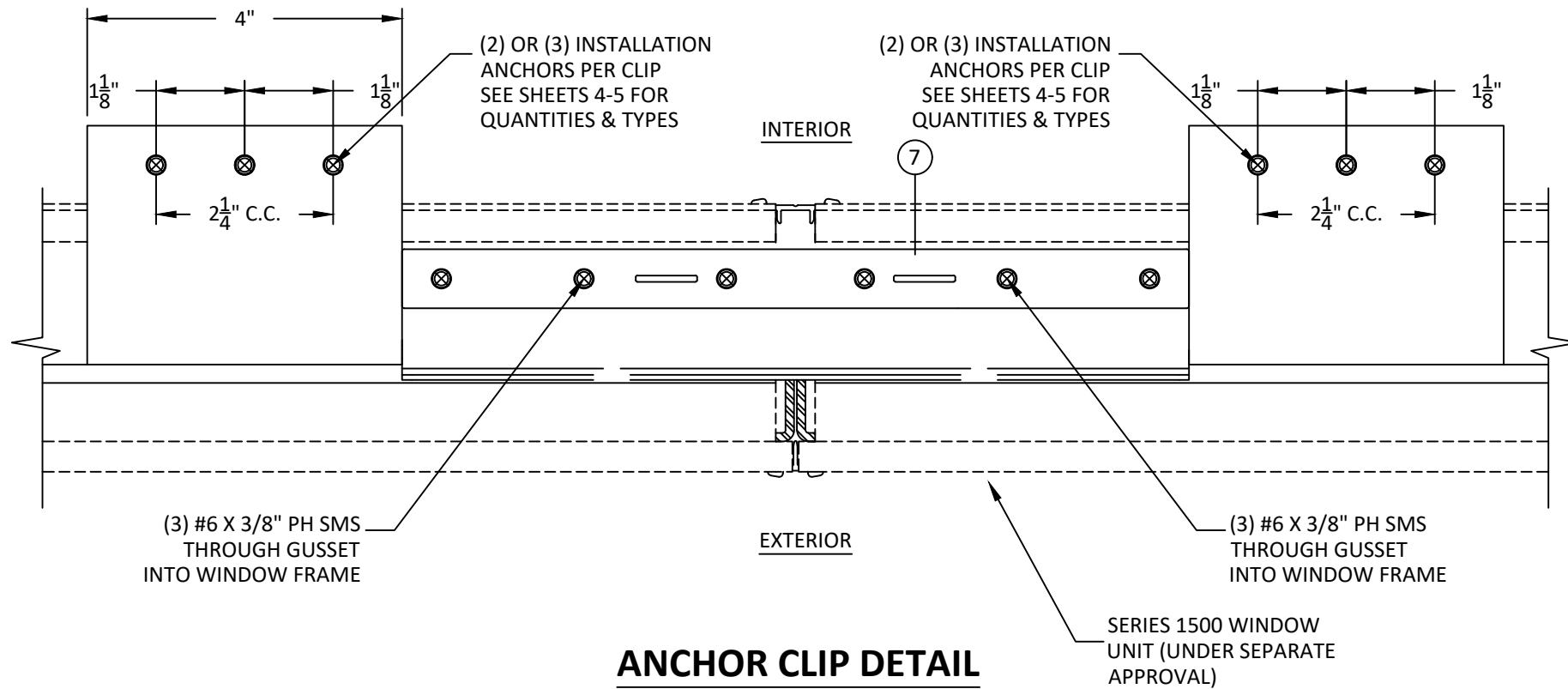
9/26/2022 12:45 PM



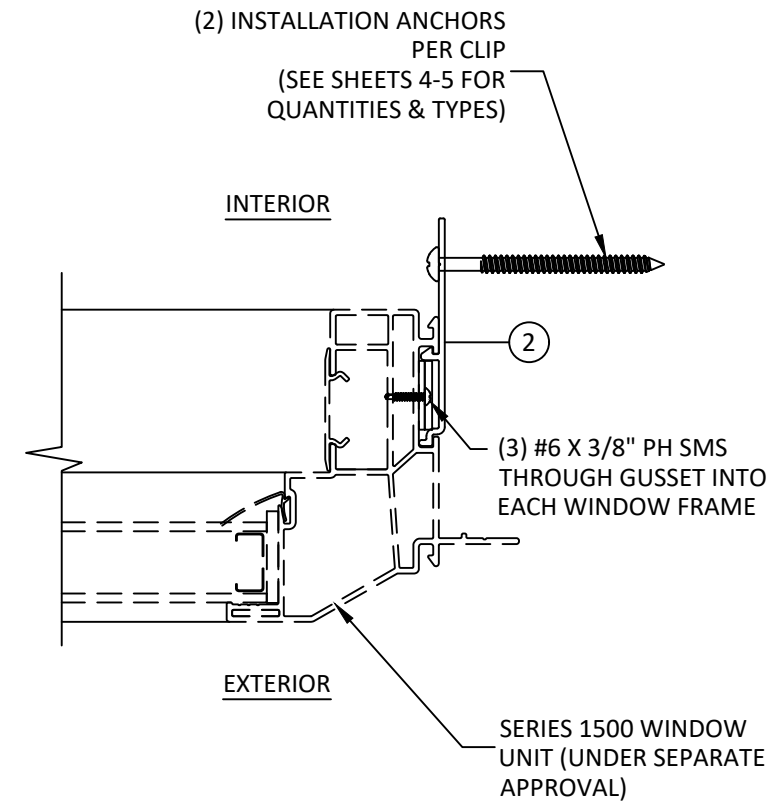
**GUSSET PLATE DETAIL
PLAN VIEW**



**GUSSET PLATE DETAIL
SIDE VIEW**



**ANCHOR CLIP DETAIL
PLAN VIEW**



**ANCHOR CLIP DETAIL
SIDE VIEW**



433 N. MAIN ST., PO BOX 559,
ROCKY MOUNT, VA 24151
PH: 540-484-6348 FX: 540-484-6683

TITLE: SERIES 1500 BEVELED
FRAME MULLION
(IMPACT)
ANCHORAGE METHOD
DETAILS

PREPARED BY: **B.D. BUILDING DROPS**
BUILDING DROPS, INC.
398 E. DANIA BEACH BLVD., STE. 338
DANIA BEACH, FL 33004
PH: (954) 399-8478
FAX: (954) 744-4738
WEB: www.buildingdrops.com

REMARKS	BY	DATE
REV. ANCHOR CLIP	MS	08.16
TDI COMMENTS	RL	12.16
2018 IBC UPDATE	CA	08.22

THE INSTALLATION DETAILS DESCRIBED HEREIN ARE GENERIC AND MAY NOT REFLECT ACTUAL CONDITIONS FOR A SPECIFIC SITE. IF SITE CONDITIONS CAUSE INSTALLATION TO DEVIATE FROM THE REQUIREMENTS DETAILED HEREIN, A LICENSED ENGINEER OR ARCHITECT SHALL PREPARE SITE SPECIFIC DOCUMENTS FOR USE WITH THIS DOCUMENT.



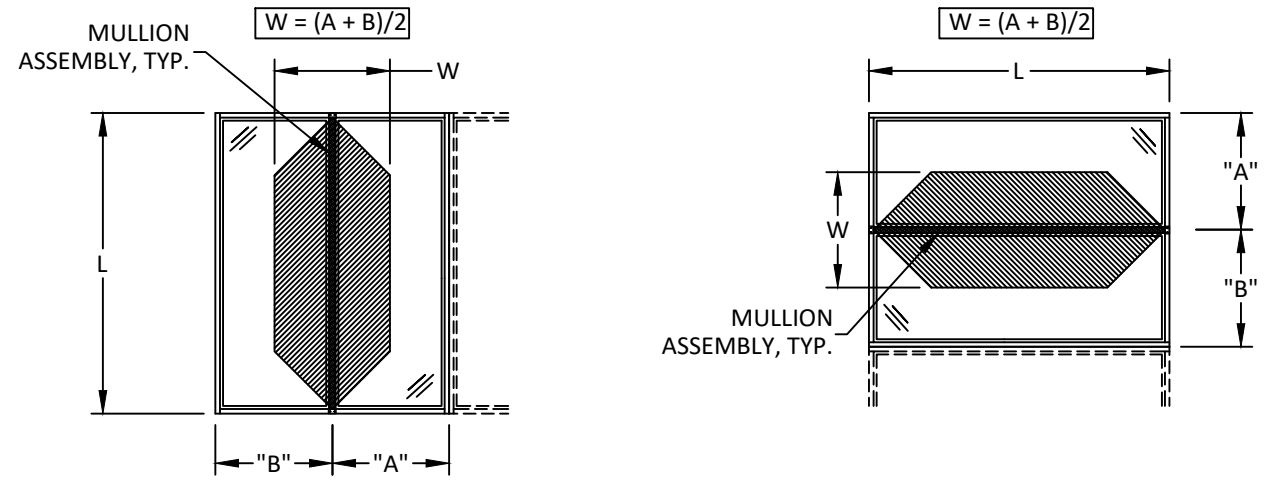
DATE:	08.24.22	
DWG. BY:	CA	CHK. BY: HFN
SCALE:	NTS	
DWG. #:	PGW196	

SHEET:
3
OF 6

9/26/2022 12:45 PM
j:\projects\ply_gem_windows\tdi-22-0830 - tdi submittal - series 1500 beveled frame and brickmould frame mullions.dwg
j:\projects\ply_gem_windows\tdi-22-0830 - tdi submittal - series 1500 beveled frame and brickmould frame mullions.dwg

PLY GEM SERIES 1500 BEVELED FRAME MULLION - DESIGN PRESSURE TABLE FOR 'ONE-WAY' MULLIONS (PSF)													
WIDTH 'W'	MULLION SPAN 'L'												
	24"	30"	36"	42"	48"	54"	60"	66"	72"	78"	83 1/2"	90"	95 1/2"
18"	50.0	50.0	50.0	50.0	50.0	50.0	50.0	50.0	50.0	50.0	50.0	40.8	34.1
21"	50.0	50.0	50.0	50.0	50.0	50.0	50.0	50.0	50.0	50.0	44.2	35.1	29.3
24"	50.0	50.0	50.0	50.0	50.0	50.0	50.0	50.0	50.0	45.5	38.9	31.0	25.8
27"	50.0	50.0	50.0	50.0	50.0	50.0	50.0	50.0	48.2	40.8	34.9	27.7	23.1
30"	50.0	50.0	50.0	50.0	50.0	50.0	50.0	50.0	43.9	37.1	31.8	25.2	21.0
33"	50.0	50.0	50.0	50.0	50.0	50.0	50.0	48.8	40.4	34.1	29.2	23.1	19.2
36"	50.0	50.0	50.0	50.0	50.0	50.0	50.0	45.5	37.6	31.6	27.1	21.4	17.8
39"	50.0	50.0	50.0	50.0	50.0	50.0	50.0	42.8	35.3	29.6	25.3	20.0	16.6
42"	50.0	50.0	50.0	50.0	50.0	50.0	50.0	40.6	33.3	27.9	23.9	18.8	15.6
45"	50.0	50.0	50.0	50.0	50.0	50.0	48.9	38.8	31.7	26.4	22.6	17.8	---
48"	50.0	50.0	50.0	50.0	50.0	50.0	47.3	37.3	30.3	25.2	21.6	16.9	---
51"	50.0	50.0	50.0	50.0	50.0	50.0	46.1	36.1	29.2	24.2	20.7	16.2	---
54"	50.0	50.0	50.0	50.0	50.0	50.0	45.3	35.2	28.3	23.3	19.9	15.5	---

- THE DESIGN PRESSURES IN THIS CHART ARE FOR ONE-WAY MULLIONS WHEN INSTALLED USING THE NAIL FIN & GUSSET PLATE METHOD OR ANCHOR CLIP METHOD.
- FOR NAIL FIN & GUSSET PLATE METHOD:
 - FOR WOOD FRAMING INSTALLATION USE EIGHT (8) #8 WOOD SCREWS AT EACH GUSSET PLATE THROUGH THE PLATE AND NAIL FIN. WOOD SCREWS MUST BE OF SUFFICIENT LENGTH TO ACHIEVE A 1-1/2" MINIMUM EMBEDMENT INTO FRAMING. SEE SHEET 2 FOR TYPICAL INSTALLATION DETAILS.
 - FOR STEEL FRAME INSTALLATION USE EIGHT (8) #8 GR. 5 SELF-TAPPING SCREWS AT EACH GUSSET PLATE THROUGH THE PLATE AND NAIL FIN. SELF-TAPPING SCREWS MUST BE OF SUFFICIENT LENGTH TO ACHIEVE A MINIMUM (3) THREAD PENETRATION BEYOND STEEL SUBSTRATE. SEE SHEET 2 FOR TYPICAL INSTALLATION DETAILS.
- FOR ANCHOR CLIP METHOD:
 - FOR WOOD FRAMING INSTALLATION USE THREE (3) #8 WOOD SCREWS PER CLIP. USE TWO CLIPS PER MULLION END. WOOD SCREWS MUST BE OF SUFFICIENT LENGTH TO ACHIEVE A 1-1/2" MINIMUM EMBEDMENT INTO FRAMING. SEE SHEET 2 FOR TYPICAL INSTALLATION DETAILS.
 - FOR STEEL FRAME INSTALLATION USE THREE (3) #8 GR. 5 SELF-TAPPING SCREWS PER CLIP. USE TWO CLIPS PER MULLION END. SELF-TAPPING SCREWS MUST BE OF SUFFICIENT LENGTH TO ACHIEVE A MINIMUM (3) THREAD PENETRATION BEYOND STEEL SUBSTRATE. SEE SHEET 2 FOR TYPICAL INSTALLATION DETAILS.
 - FOR CONCRETE/MASONRY FRAMING INSTALLATION USE TWO (2) 3/16" ITW TAPCONS PER CLIP. USE TWO CLIPS PER MULLION END. ITW TAPCONS MUST BE OF SUFFICIENT LENGTH TO ACHIEVE A 1-1/2" MINIMUM EMBEDMENT INTO FRAMING. SEE SHEET 2 FOR TYPICAL INSTALLATION DETAILS.
- DESIGN PRESSURE VALUES APPLY TO MULLION WHERE TWO OR MORE WINDOWS ARE LISTED IN A SINGLE OPENING. DESIGN PRESSURE VALUES ON THIS CHART ARE POSITIVE AND NEGATIVE PSF.



TYPICAL ONE-WAY MULLION LAYOUTS



433 N. MAIN ST., PO BOX 559,
ROCKY MOUNT, VA 24151
PH: 540-484-6348 FX: 540-484-6683

TITLE: SERIES 1500 BEVELED FRAME MULLION (IMPACT)
ONE-WAY MULLION DESIGN PRESSURE CHARTS

PREPARED BY: **BUILDING DROPS, INC.**
398 E. DANIA BEACH BLVD., STE. 338
DANIA BEACH, FL 33004
PH: (954) 399-8478
FAX: (954) 744-4738
WEB: www.buildingdrops.com

REMARKS	BY	DATE
REV. ANCHOR CLIP	MS	08.16
TDI COMMENTS	RL	12.16
2018 IBC UPDATE	CA	08.22

THE INSTALLATION DETAILS DESCRIBED HEREIN ARE GENERIC AND MAY NOT REFLECT ACTUAL CONDITIONS FOR A SPECIFIC SITE. IF SITE CONDITIONS CAUSE INSTALLATION TO DEVIATE FROM THE REQUIREMENTS DETAILED HEREIN, A LICENSED ENGINEER OR ARCHITECT SHALL PREPARE SITE SPECIFIC DOCUMENTS FOR USE WITH THIS DOCUMENT.



DATE: **08.24.22**

DWG. BY: **CA** CHK. BY: **HFN**

SCALE: **NTS**

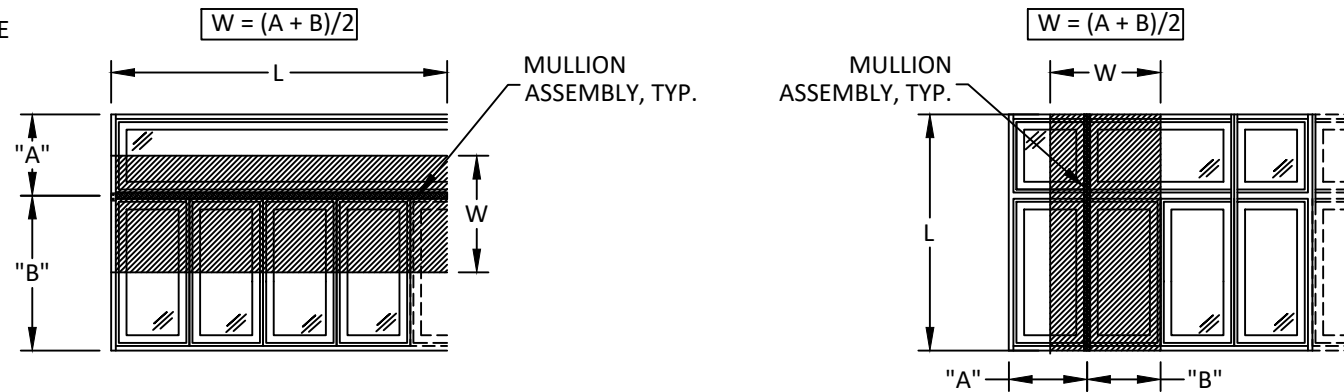
DWG. #: **PGW196**

SHEET: **4** OF 6

9/26/2022 12:45 PM
j:\projects\ply_gem_windows\tdi-22-0830 - tdi submittal - series 1500 beveled frame and brickmould frame mullions.dwg

PLY GEM SERIES 1500 BEVELED FRAME MULLION - DESIGN PRESSURE TABLE FOR 'TWO-WAY' MULLIONS (PSF)													
WIDTH 'W'	MULLION SPAN 'L'												
	24"	30"	36"	42"	48"	54"	60"	66"	72"	78"	83 1/2"	90"	95 1/2"
18"	50.0	50.0	50.0	50.0	50.0	50.0	50.0	50.0	50.0	50.0	50.0	50.0	45.4
21"	50.0	50.0	50.0	50.0	50.0	50.0	50.0	50.0	50.0	50.0	50.0	43.8	38.9
24"	50.0	50.0	50.0	50.0	50.0	50.0	50.0	50.0	50.0	50.0	44.5	38.3	34.0
27"	50.0	50.0	50.0	50.0	50.0	50.0	50.0	50.0	50.0	45.3	39.6	34.0	30.2
30"	50.0	50.0	50.0	50.0	50.0	50.0	50.0	50.0	47.9	40.8	35.6	30.6	27.2
33"	50.0	50.0	50.0	50.0	50.0	50.0	50.0	50.0	43.5	37.1	32.4	27.9	24.7
36"	50.0	50.0	50.0	50.0	50.0	50.0	50.0	47.5	39.9	34.0	29.7	25.5	22.7
39"	50.0	50.0	50.0	50.0	50.0	50.0	50.0	43.8	36.8	31.4	27.4	23.6	20.9
42"	50.0	50.0	50.0	50.0	50.0	50.0	49.2	40.7	34.2	29.1	25.4	21.9	19.4
45"	50.0	50.0	50.0	50.0	50.0	50.0	46.0	38.0	31.9	27.2	23.7	20.4	18.1
48"	50.0	50.0	50.0	50.0	50.0	50.0	43.1	35.6	29.9	25.5	22.2	19.1	17.0
51"	50.0	50.0	50.0	50.0	50.0	50.0	40.6	33.5	28.2	24.0	20.9	18.0	16.0
54"	50.0	50.0	50.0	50.0	50.0	47.3	38.3	31.7	26.6	22.7	19.8	17.0	15.1

- THE DESIGN PRESSURES IN THIS CHART ARE FOR TWO-WAY MULLIONS WHEN INSTALLED USING THE NAIL FIN & GUSSET PLATE METHOD OR ANCHOR CLIP METHOD.
- FOR NAIL FIN & GUSSET PLATE METHOD:
 - FOR WOOD FRAMING INSTALLATION USE EIGHT (8) #8 WOOD SCREWS AT EACH GUSSET PLATE THROUGH THE PLATE AND NAIL FIN. WOOD SCREWS MUST BE OF SUFFICIENT LENGTH TO ACHIEVE A 1-1/2" MINIMUM EMBEDMENT INTO FRAMING. SEE SHEET 2 FOR TYPICAL INSTALLATION DETAILS.
 - FOR STEEL FRAME INSTALLATION USE EIGHT (8) #8 GR. 5 SELF-TAPPING SCREWS AT EACH GUSSET PLATE THROUGH THE PLATE AND NAIL FIN. SELF-TAPPING SCREWS MUST BE OF SUFFICIENT LENGTH TO ACHIEVE A MINIMUM (3) THREAD PENETRATION BEYOND STEEL SUBSTRATE. SEE SHEET 2 FOR TYPICAL INSTALLATION DETAILS.
- FOR ANCHOR CLIP METHOD:
 - FOR WOOD FRAMING INSTALLATION USE THREE (3) #8 WOOD SCREWS PER CLIP. USE TWO CLIPS PER MULLION END. WOOD SCREWS MUST BE OF SUFFICIENT LENGTH TO ACHIEVE A 1-1/2" MINIMUM EMBEDMENT INTO FRAMING. SEE SHEET 2 FOR TYPICAL INSTALLATION DETAILS.
 - FOR STEEL FRAME INSTALLATION USE THREE (3) #8 GR. 5 SELF-TAPPING SCREWS PER CLIP. USE TWO CLIPS PER MULLION END. SELF-TAPPING SCREWS MUST BE OF SUFFICIENT LENGTH TO ACHIEVE A MINIMUM (3) THREAD PENETRATION BEYOND STEEL SUBSTRATE. SEE SHEET 2 FOR TYPICAL INSTALLATION DETAILS.
 - FOR CONCRETE/MASONRY FRAMING INSTALLATION USE TWO (2) 3/16" ITW TAPCONS PER CLIP. USE TWO CLIPS PER MULLION END. ITW TAPCONS MUST BE OF SUFFICIENT LENGTH TO ACHIEVE A 1-1/2" MINIMUM EMBEDMENT INTO FRAMING. SEE SHEET 2 FOR TYPICAL INSTALLATION DETAILS.
- DESIGN PRESSURE VALUES APPLY TO MULLION WHERE TWO OR MORE WINDOWS ARE LISTED IN A SINGLE OPENING. DESIGN PRESSURE VALUES ON THIS CHART ARE POSITIVE AND NEGATIVE PSF.



TYPICAL TWO-WAY MULLION LAYOUTS



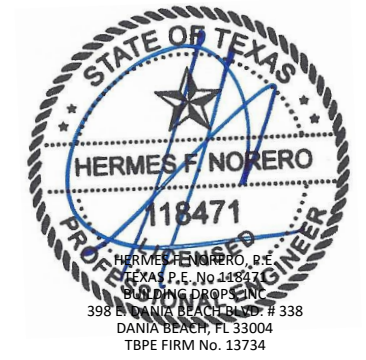
433 N. MAIN ST., PO BOX 559,
ROCKY MOUNT, VA 24151
PH: 540-484-6348 FX: 540-484-6683

TITLE: SERIES 1500 BEVELED FRAME MULLION (IMPACT)
TWO-WAY MULLION DESIGN PRESSURE CHARTS

PREPARED BY: BUILDING DROPS, INC.
398 E. DANIA BEACH BLVD., STE. 338
DANIA BEACH, FL 33004
PH: (954) 399-8478
FAX: (954) 744-4738
WEB: www.buildingdrops.com

REMARKS	BY	DATE
REV. ANCHOR CLIP	MS	08.16
TDI COMMENTS	RL	12.16
2018 IBC UPDATE	CA	08.22

THE INSTALLATION DETAILS DESCRIBED HEREIN ARE GENERIC AND MAY NOT REFLECT ACTUAL CONDITIONS FOR A SPECIFIC SITE. IF SITE CONDITIONS CAUSE INSTALLATION TO DEVIATE FROM THE REQUIREMENTS DETAILED HEREIN, A LICENSED ENGINEER OR ARCHITECT SHALL PREPARE SITE SPECIFIC DOCUMENTS FOR USE WITH THIS DOCUMENT.



DATE: 08.24.22

DWG. BY: CA CHK. BY: HFN

SCALE: NTS

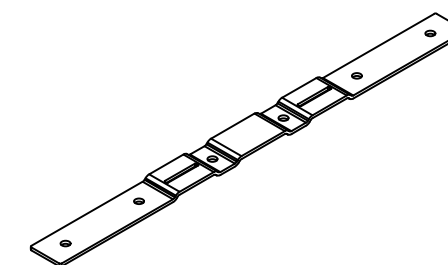
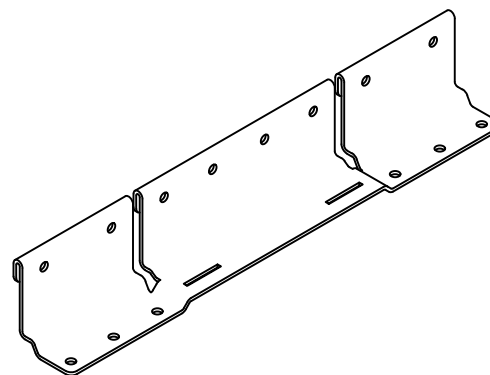
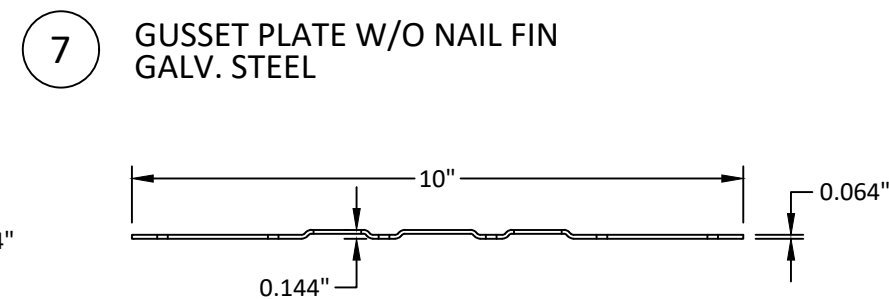
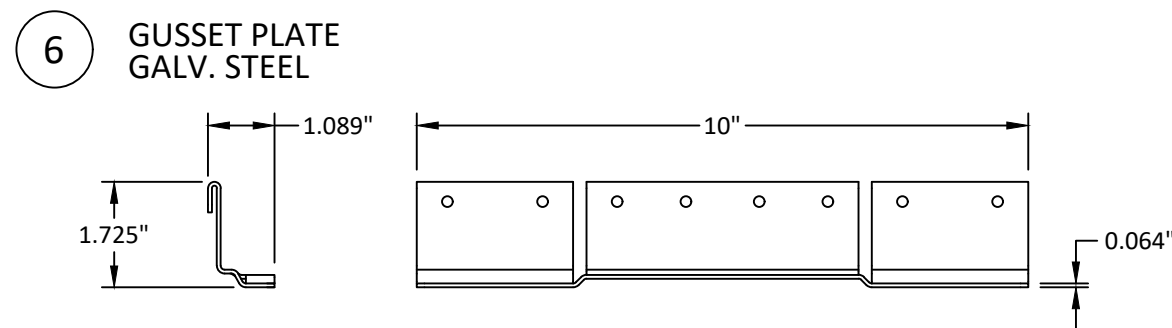
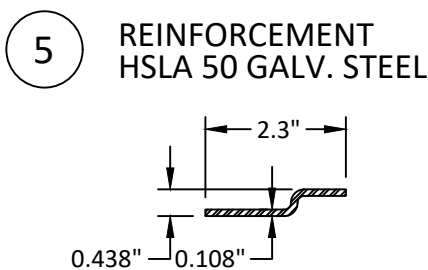
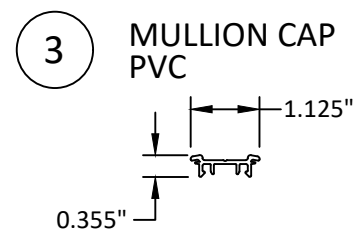
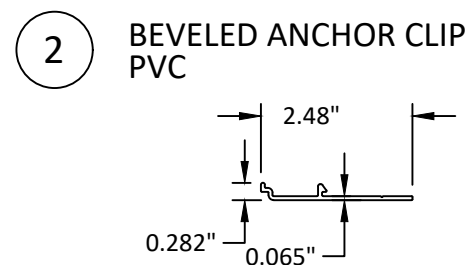
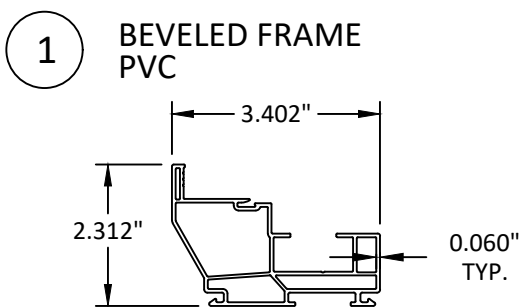
DWG. #: PGW196

SHEET: 5 OF 6

j:\projects\ply_gem_windows\tdi-22-0830 - tdi submittal - series 1500 beveled frame and brickmould frame mullions.dwg\196-09-07.dwg

BILL OF MATERIALS

ITEM NO.	PART NO.	DESCRIPTION	MATERIAL	MANUFACTURER/NOTES
1	-	BEVELED FRAME	PVC	PLY GEM WINDOWS
2	-	BEVELED ANCHOR CLIP	PVC	PLY GEM WINDOWS
3	-	INTERIOR CAP	PVC	PLY GEM WINDOWS
4	-	NOT USED	---	---
5	-	REINFORCEMENT	HSLA 50 GALV. STEEL	PLY GEM WINDOWS
6	-	GUSSET PLATE	GALV. STEEL	PLY GEM WINDOWS
7	-	GUSSET PLATE W/O NAIL FIN	GALV. STEEL	PLY GEM WINDOWS



433 N. MAIN ST., PO BOX 559,
ROCKY MOUNT, VA 24151
PH: 540-484-6348 FX: 540-484-6683

TITLE: SERIES 1500 BEVELED
FRAME MULLION
(IMPACT)
COMPONENTS
& BILL OF MATERIALS

PREPARED BY:

BUILDING DROPS, INC.
398 E. DANIA BEACH BLVD., STE. 338
DANIA BEACH, FL 33004
PH: (954) 399-8478
FAX: (954) 744-4738
WEB: www.buildingdrops.com

REMARKS	BY	DATE
REV. ANCHOR CLIP	MS	08.16
TDI COMMENTS	RL	12.16
2018 IBC UPDATE	CA	08.22

THE INSTALLATION DETAILS DESCRIBED HEREIN ARE GENERIC AND MAY NOT REFLECT ACTUAL CONDITIONS FOR A SPECIFIC SITE. IF SITE CONDITIONS CAUSE INSTALLATION TO DEVIATE FROM THE REQUIREMENTS DETAILED HEREIN, A LICENSED ENGINEER OR ARCHITECT SHALL PREPARE SITE SPECIFIC DOCUMENTS FOR USE WITH THIS DOCUMENT.

HERMES F. NORERO, P.E.
TEXAS P.E. No. 118471
BUILDING DROPS, INC.
398 E. DANIA BEACH BLVD., # 338
DANIA BEACH, FL 33004
TBPE FIRM No. 13734

DATE: 08.24.22	
DWG. BY: CA	CHK. BY: HFN
SCALE: NTS	
DWG. #: PGW196	
SHEET:	

6

OF 6