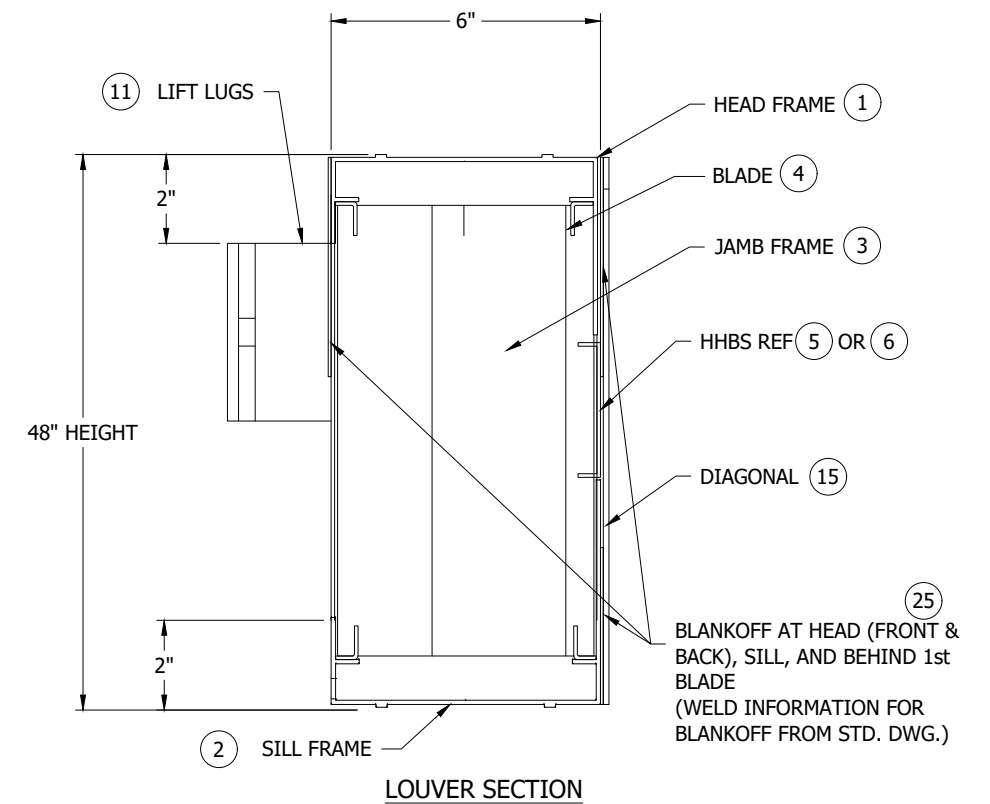
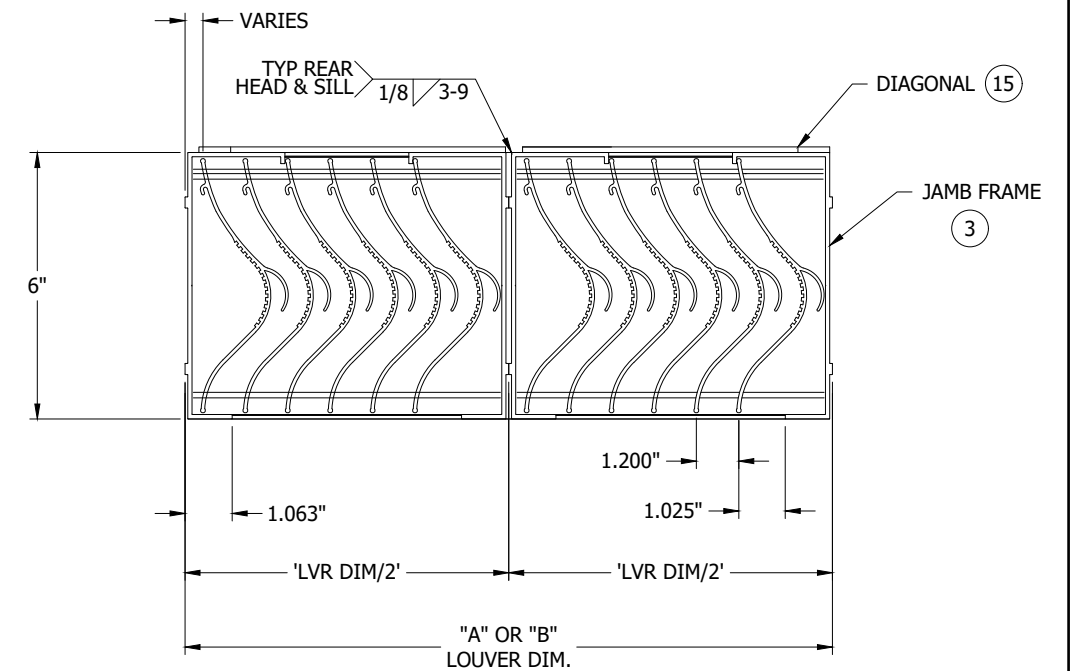


PENTHOUSE ISOMETRIC

FRAME
6063-T6 extruded aluminum with .095" nominal wall thickness.
BLADES
6063-T6 extruded aluminum with .080" nominal wall thickness.
ROOF
.080 thick formed aluminum panels
SILL
.125" thick formed aluminum
FINISH
Mill



LOUVER SECTION



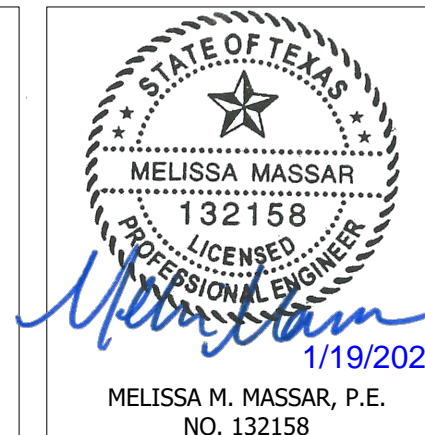
LOUVER PLANVIEW

NOTE:
REF SHEET 6 FOR DESCRIPTION OF LINE ITEMS

NOTES: (A)

- 1) THE PHB6625D COMPLIES WITH THE REQUIREMENTS OF THE 2018 IBC. THE PHB6625D HAS BEEN TESTED IN ACCORDANCE WITH FLORIDA PROTOCOLS TAS-201, 202 & 203 FOR LARGE MISSILE IMPACT, UNIFORM PRESSURE AND CYCLIC WIND PRESSURE.
- 2) THIS PENTHOUSE SYSTEM IS APPROVED FOR APPLICATIONS WITH DESIGN PRESSURES OF +/- 110 PSF OR LESS.
- 3) IT SHALL BE THE RESPONSIBILITY OF THE PERMIT HOLDER/BUILDING DESIGN ENGINEER OF RECORD TO VERIFY THE STRUCTURAL INTEGRITY OF THE ROOF CURB/STRUCTURE TO SUPPORT THE LOADS IMPOSED BY THIS PENTHOUSE SYSTEM.
- 4) 'A'+12" AND 'B'+12" ARE THE OUTSIDE DIMENSIONS OF THE PENTHOUSE SIDES. 'A' AND 'B' ARE THE INSIDE DIMENSIONS OF THE CURB.
- 5) THE MAXIMUM OUTSIDE DIMENSIONS OF THE PENTHOUSE ARE 96"x108"x48" TALL AS INDICATED ON THESE DRAWINGS. THE MINIMUM OUTSIDE DIMENSIONS OF THE PENTHOUSE ARE 24"x24"x12" TALL.
- 6) SEALING REQUIREMENTS AROUND THE PENTHOUSE SHALL COMPLY WITH THE PROVISIONS OF CHAPTER 15 OF THE FLORIDA BUILDING CODE.
- 7) ALL FASTENERS SHALL BE CORROSION RESISTANT.

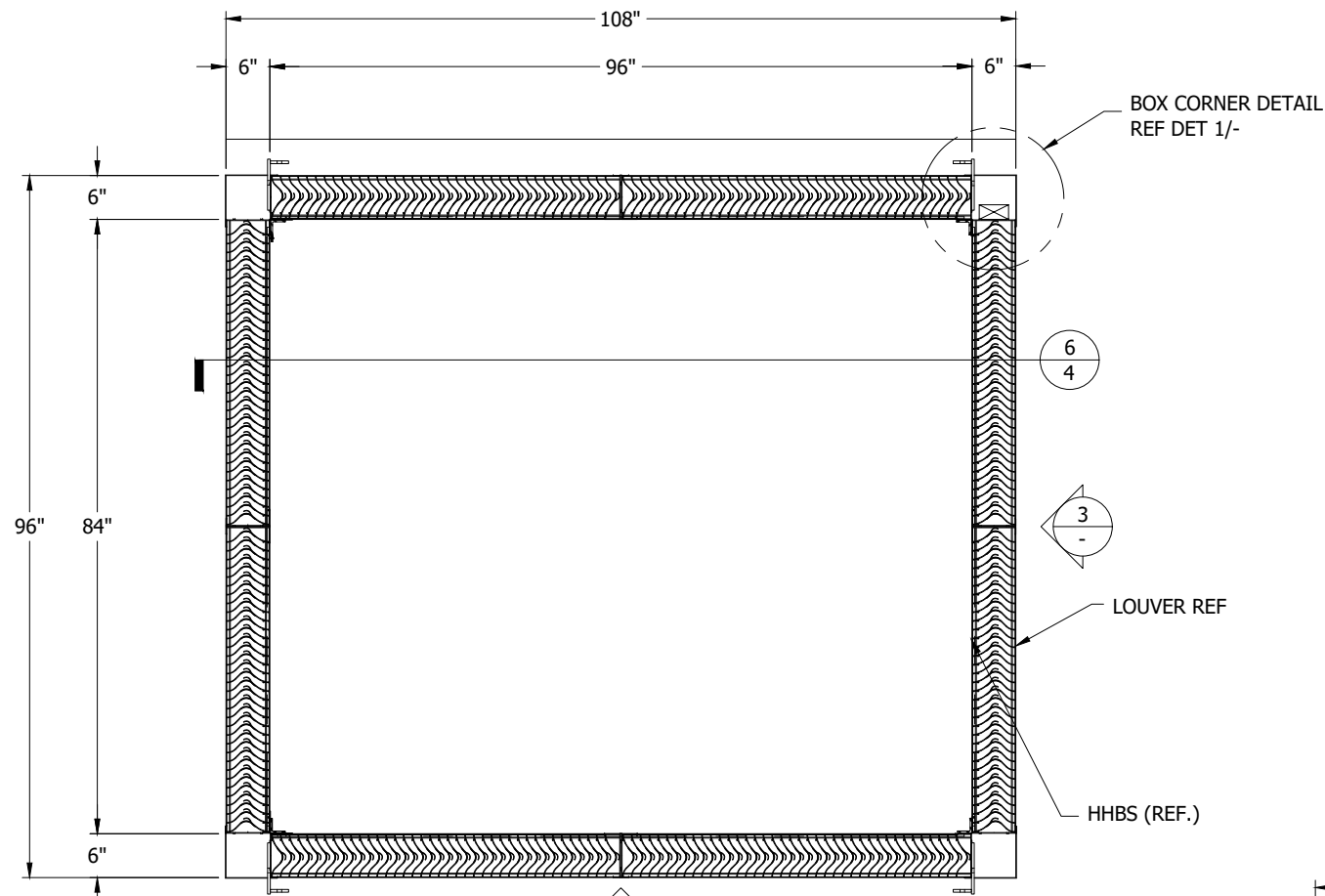
FOR OFFICE USE ONLY



DWN. BY: WRT	CHK. BY: DJR	APPV'D. BY: DJR	APPV'D. BY:
DATE: 6/26/6	DATE: 7/7/6	DATE: 7/7/6	DATE:

SHEET 1 OF 11

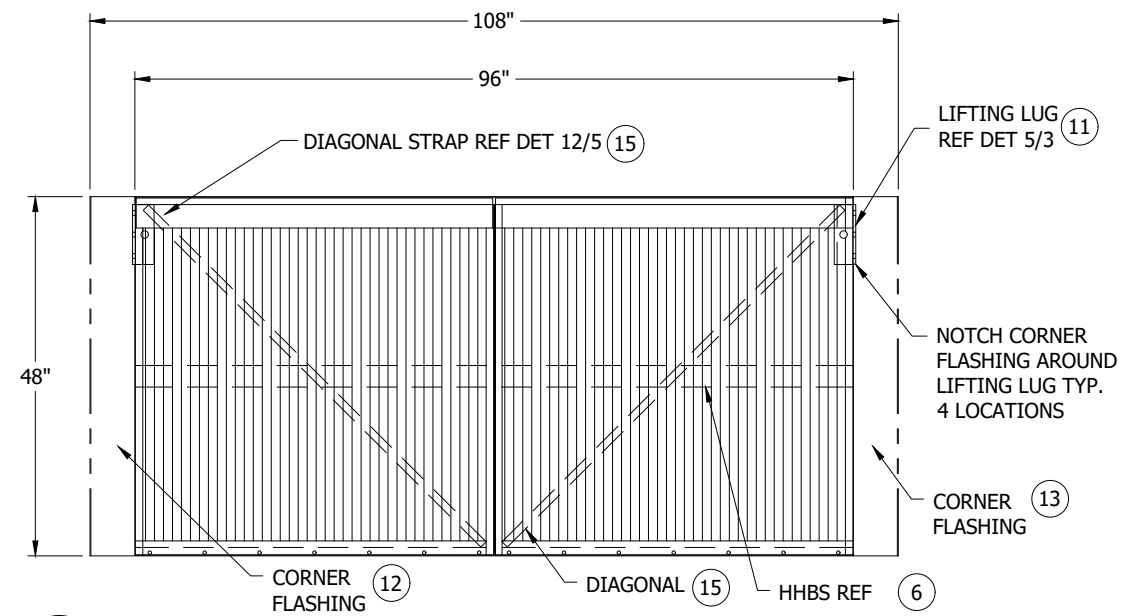
(A)	REVISED NOTES, CHANGED ENGINEER OF RECORD	NS	MMM	MMM	-	1/15/21
CHANGE LETTER	REVISION DESCRIPTION	DWN. BY:	CHK'D. BY:	APPV'D. BY:	APPV'D. BY:	DATE
	RUSKIN 3900 DR. GREAVES RD. GRANDVIEW, MO 64030	PLOT SCALE	NONE	ECN		
TITLE	PHB6625D PENTHOUSE SPECS, NOTES AND DETAILS	DWG. NO.	60-022425-00D			



ASSEMBLY "A"

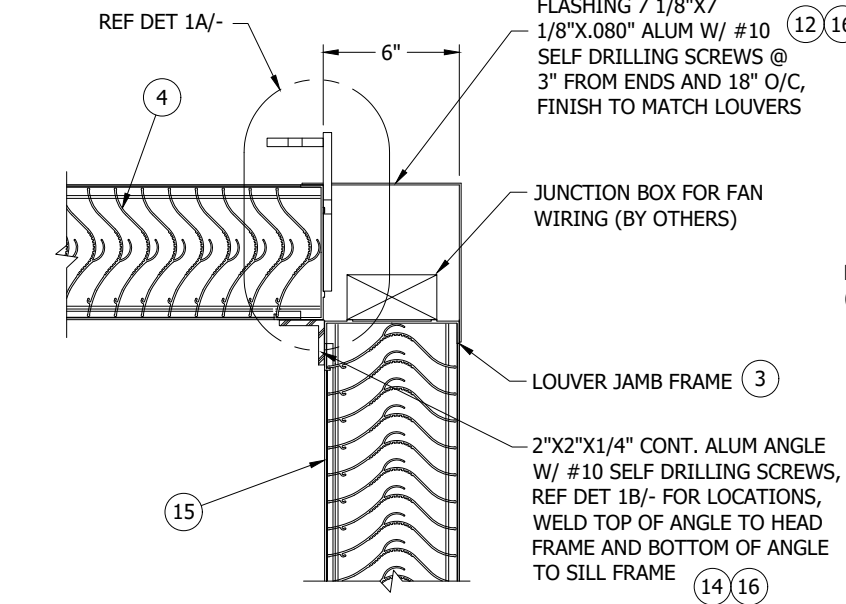
N.T.S.
HEIGHT = 48"

ROOF NOT SHOWN FOR CLARITY



2 ELEVATION

N.T.S.

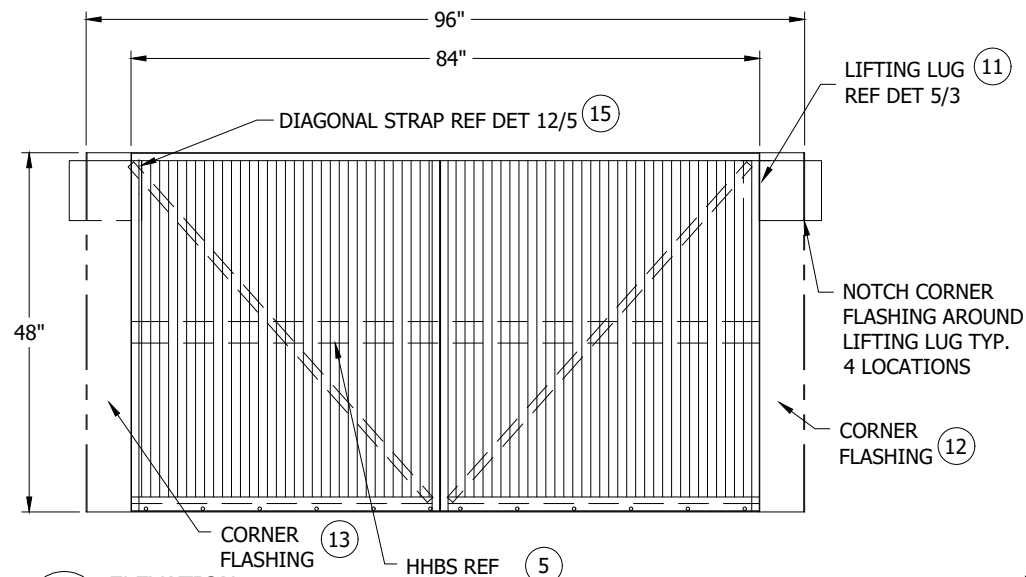


1 BOX CORNER DETAIL

NTS

1A LOUVER/CORNER FLASHING DETAIL

NTS

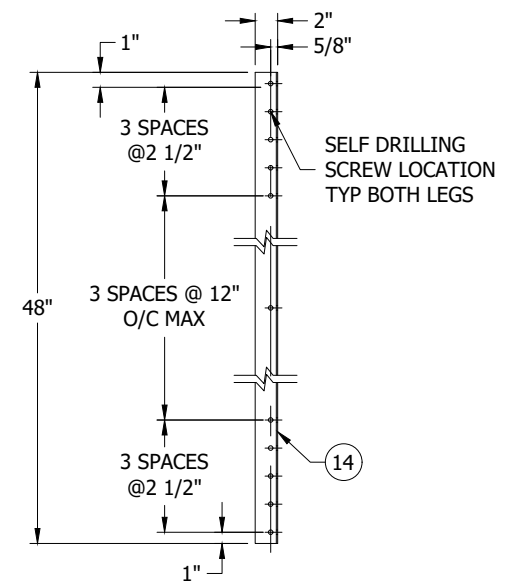


3 ELEVATION

N.T.S.

1B ITEM 14 - LOUVER CORNER ANGLE

NTS



FOR OFFICE USE ONLY

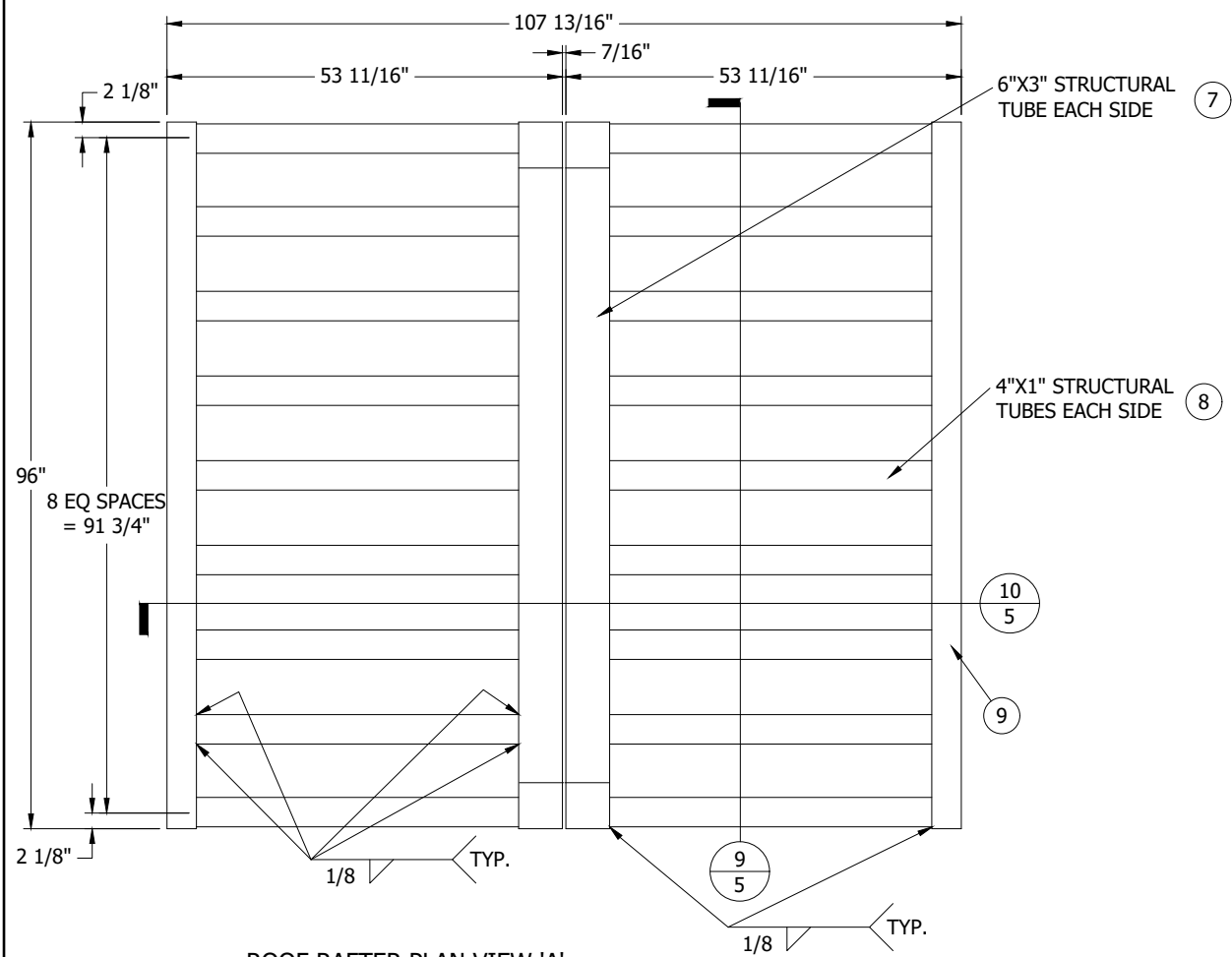
STATE OF TEXAS
MELISSA MASSAR
132158
LICENSED PROFESSIONAL ENGINEER
1/19/2021
MELISSA M. MASSAR, P.E.
NO. 132158

DWN. BY: WRT	CHK. BY: DJR	APP'D. BY: DJR	APP'D. BY:
DATE: 6/26/6	DATE: 7/7/6	DATE: 7/7/6	DATE:

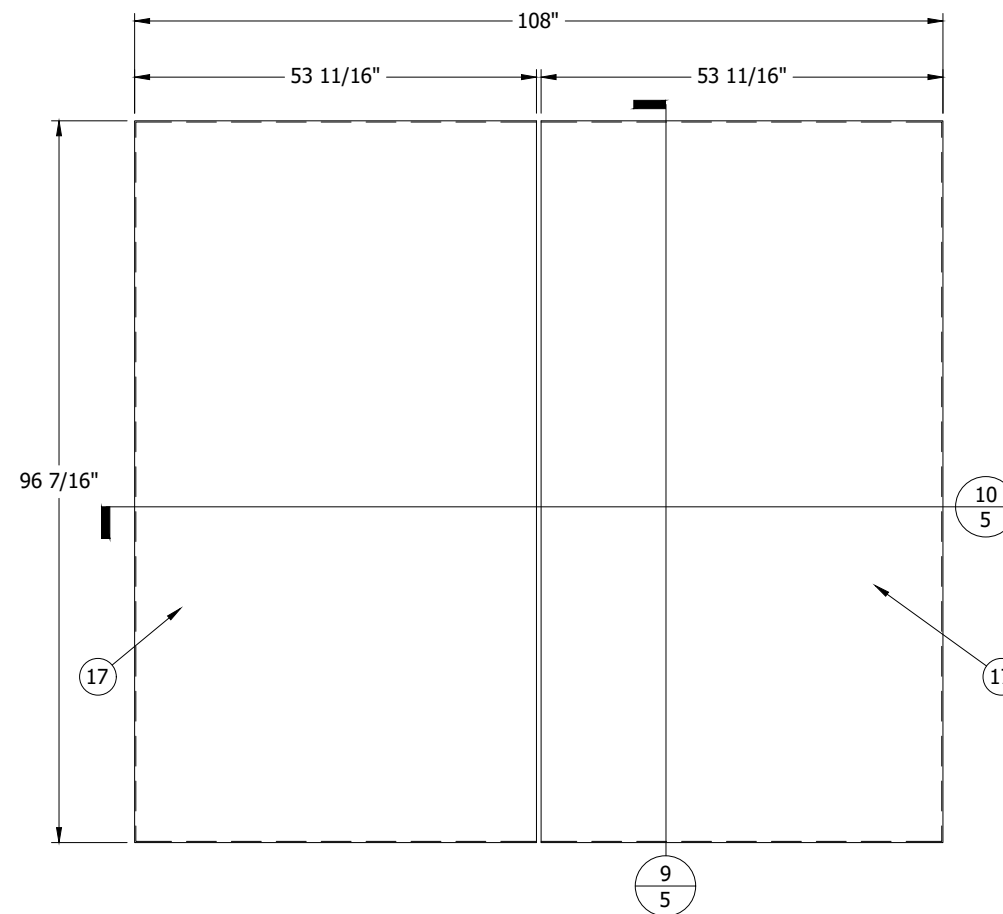
SHEET 2 OF 11

(A)	REVISED NOTES, CHANGED ENGINEER OF RECORD	NS	MMM	MMM	-	1/15/21
CHANGE LETTER	REVISION DESCRIPTION	DWN. BY:	CHK'D. BY:	APP'D. BY:	APP'D. BY:	DATE
		PLOT SCALE NONE		ECN		
TITLE PHB6625D PENTHOUSE DETAILS		DWG. NO. 60-022425-00D				

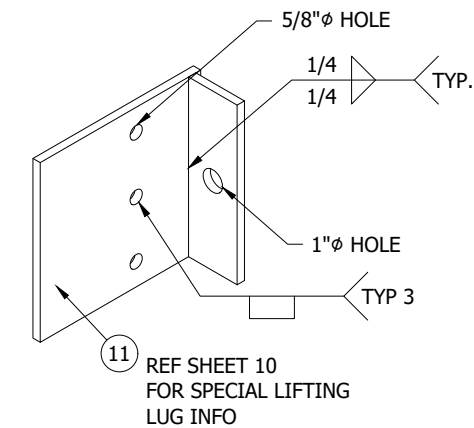
NOTE:
REF SHEET 6 FOR DESCRIPTION OF LINE ITEMS



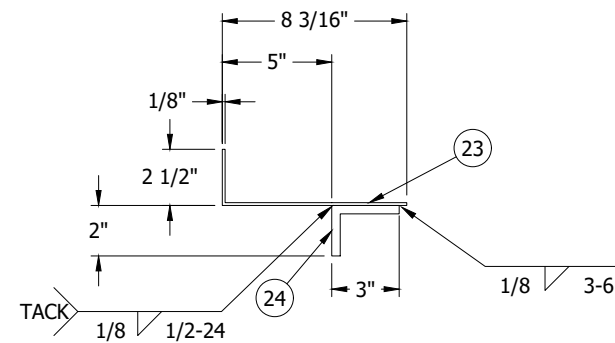
ROOF RAFTER PLAN VIEW 'A'
NTS



ROOF SKIN PLAN VIEW 'A'
NTS

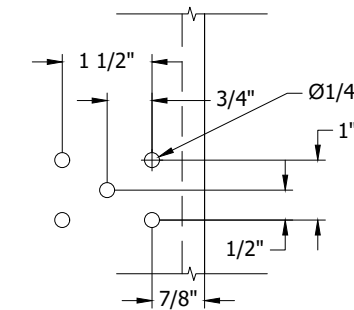


5 SPECIAL LIFTING LUG
2 NTS
MAT'L: .375\"/>

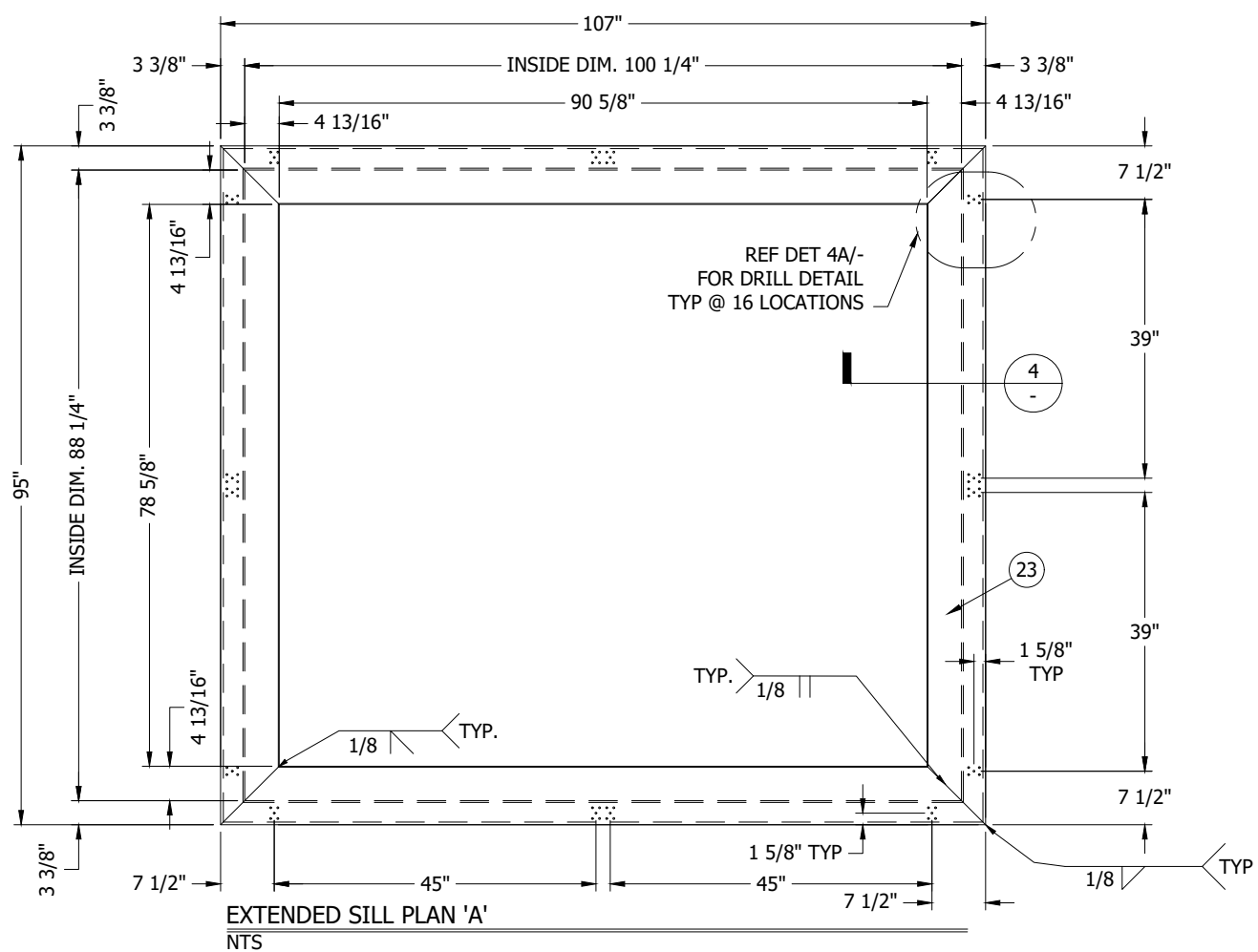


4 ITEMS 23 & 24 - EXTENDED SILL
3,4 NTS
MAT'L: .125\"/>

NOTE:
REF SHEET 6 FOR DESCRIPTION OF LINE ITEMS



4A EXTENDED SILL DRILL DETAIL
3,4 NTS



EXTENDED SILL PLAN 'A'
NTS

FOR OFFICE USE ONLY

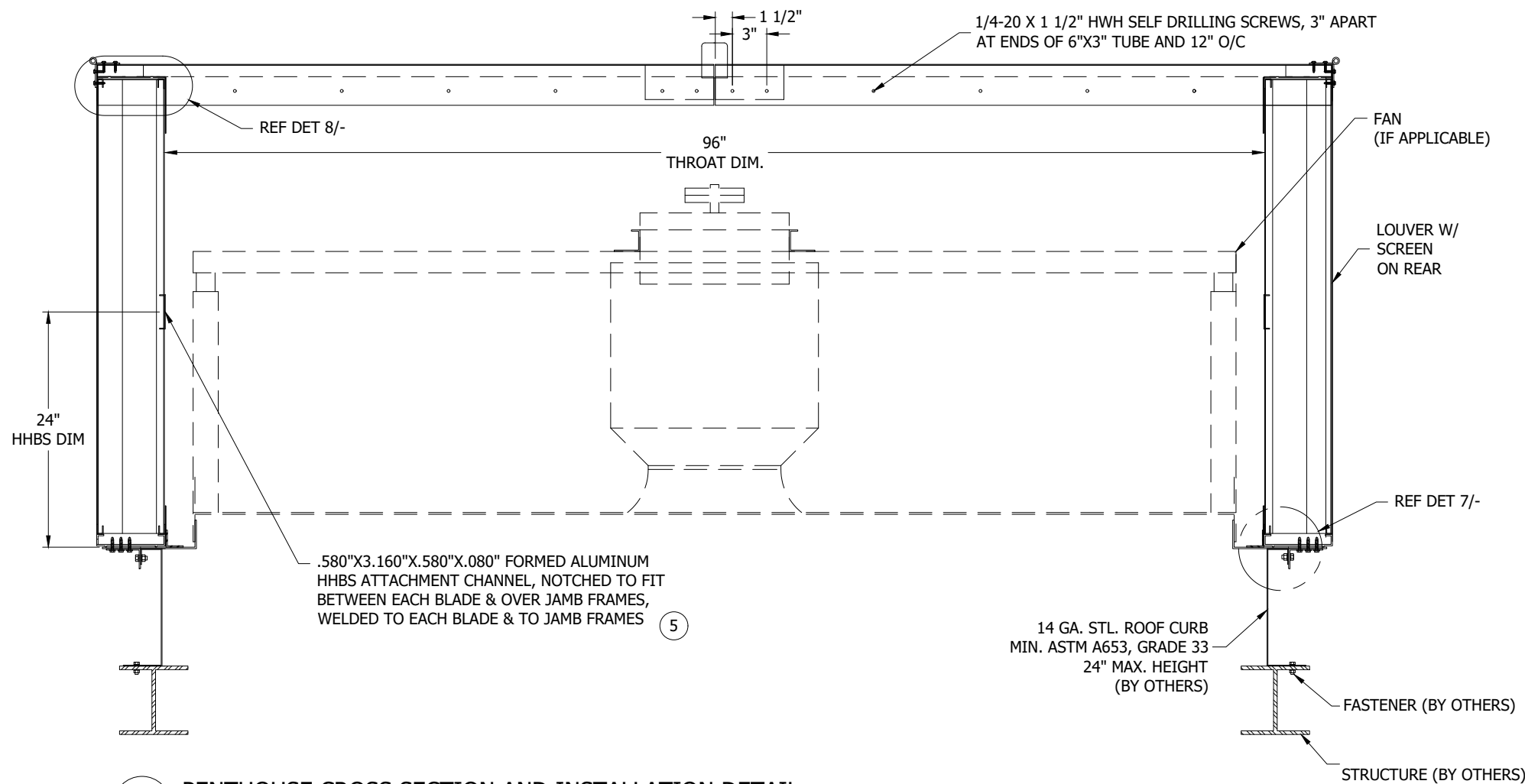


MELISSA M. MASSAR, P.E.
NO. 132158

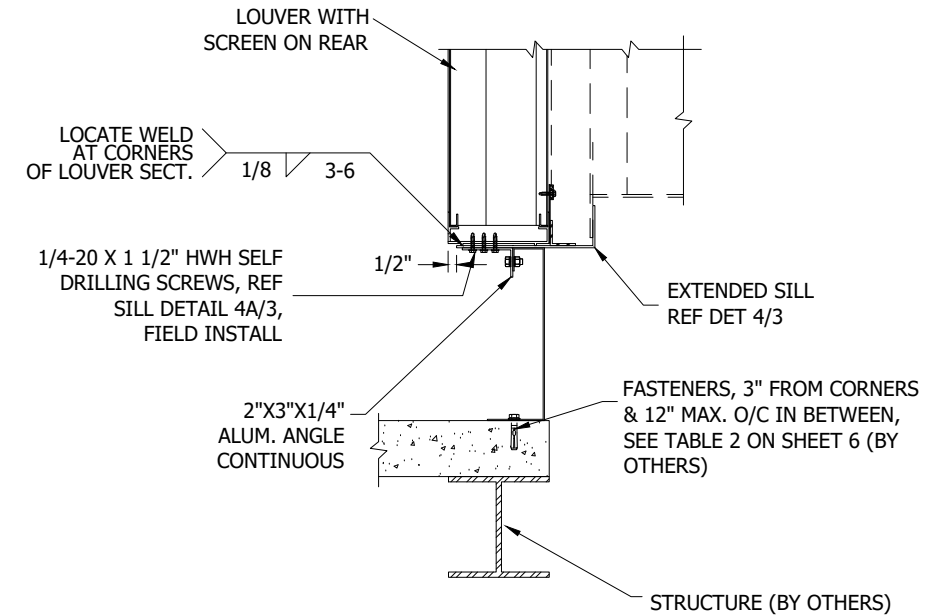
DWNL BY: WRT	CHK BY: DJR	APPVD BY: DJR	APPVD BY:
DATE: 6/26/6	DATE: 7/7/6	DATE: 7/7/6	DATE:

SHEET 3 OF 11

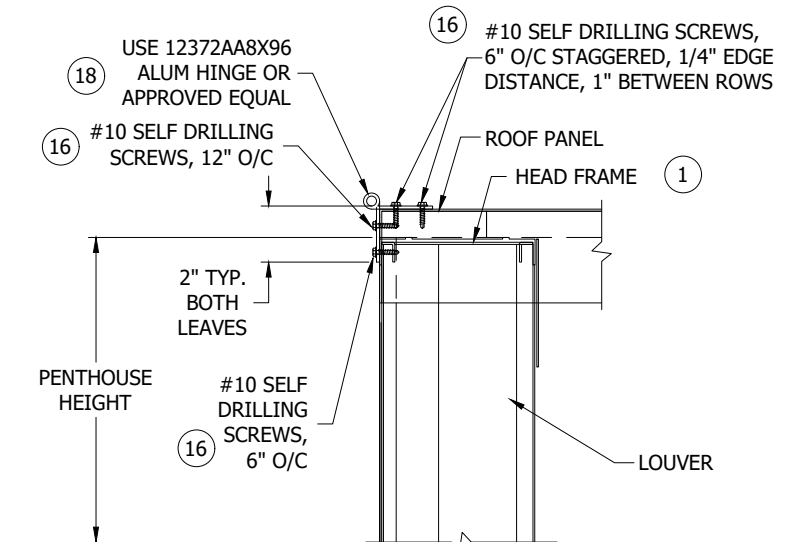
A REVISED NOTES, CHANGED ENGINEER OF RECORD		NS	MMM	MMM	-	1/15/21
CHANGE LETTER	REVISION DESCRIPTION	DWNL BY:	CHK'D BY:	APPVD BY:	APPVD BY:	DATE
RUSKIN 3900 DR. GRAEVES RD GRANDVIEW, MO 64030 <small>AUTOMATICITY IN AIR CONDITIONING</small>		PLOT SCALE: NONE		ECN		
TITLE: PHB6625D PENTHOUSE DETAILS		DWG. NO.: 60-022425-00D				



6 PENTHOUSE CROSS SECTION AND INSTALLATION DETAIL
2 NTS

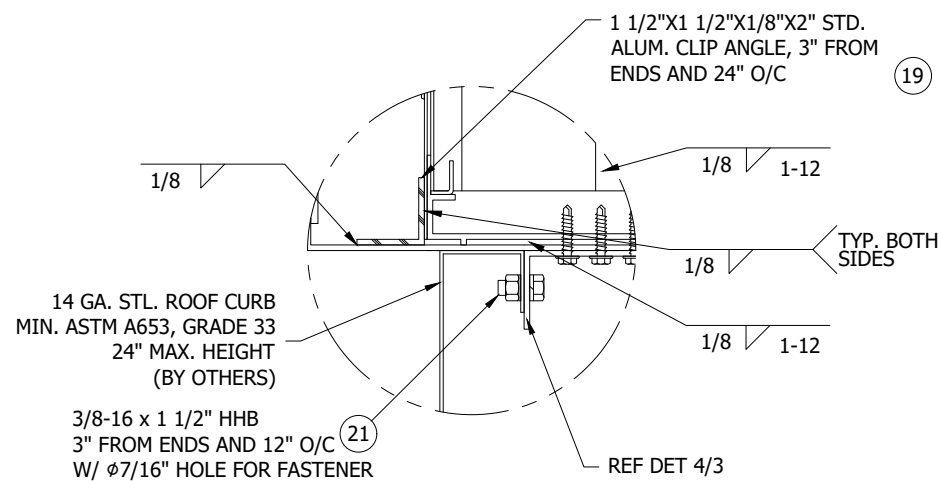


6A PENTHOUSE INSTALL (OPTIONAL)
- NTS (FOR DETAILS NOT NOTED REF DET 6/-)

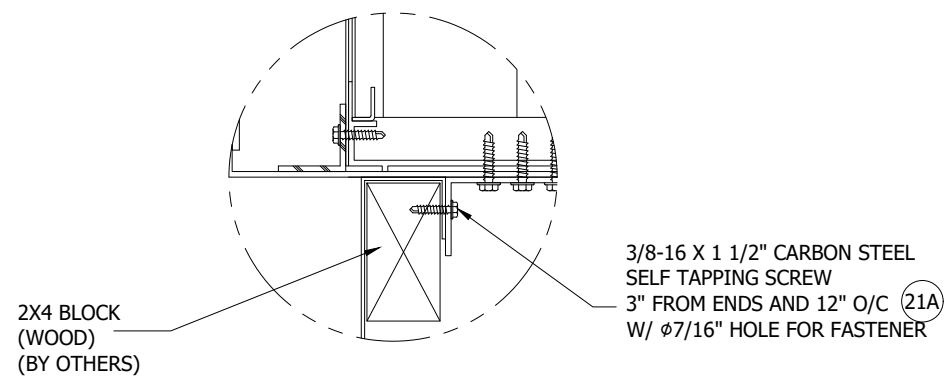


8 ROOF FASTENING DETAIL
- NTS

NOTE: REF SHEET 6 FOR DESCRIPTION OF LINE ITEMS



7 PENTHOUSE/CURB CONNECTION DETAIL
- NTS



7A PENTHOUSE/INSULATED CURB CONNECTION DETAIL
- NTS

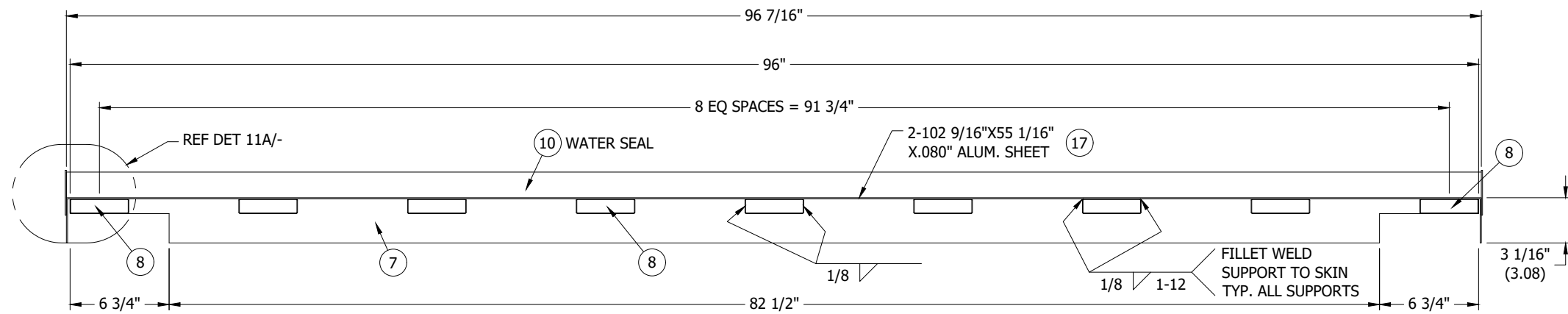
FOR OFFICE USE ONLY

STATE OF TEXAS
MELISSA MASSAR
132158
LICENSED PROFESSIONAL ENGINEER
Melissa Massar
1/19/2021
MELISSA M. MASSAR, P.E.
NO. 132158

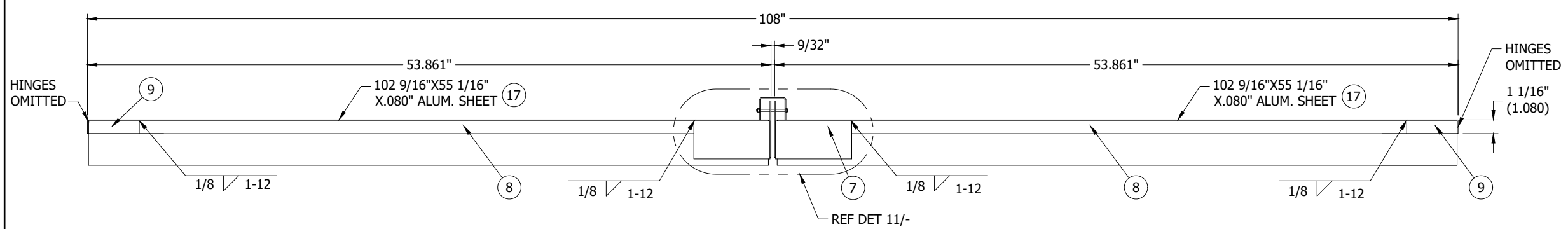
DWN. BY: WRT	CHK. BY: DJR	APP'D. BY: DJR	APP'D. BY:
DATE: 6/26/6	DATE: 7/7/6	DATE: 7/7/6	DATE:

SHEET 4 OF 11

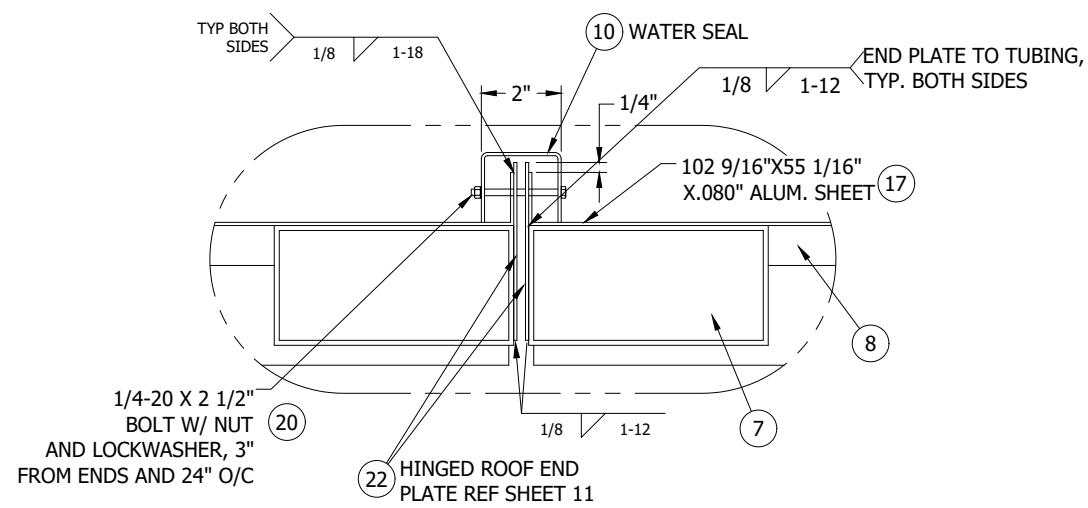
(A)	REVISED NOTES, CHANGED ENGINEER OF RECORD	NS	MMM	MMM	-	1/15/21
CHANGE LETTER:	REVISION DESCRIPTION	DWN. BY:	CHK'D. BY:	APP'D. BY:	APP'D. BY:	DATE
		PLOT SCALE		ECN		
TITLE		DWG. NO.				
PHB6625D PENTHOUSE DETAILS		60-022425-00D				



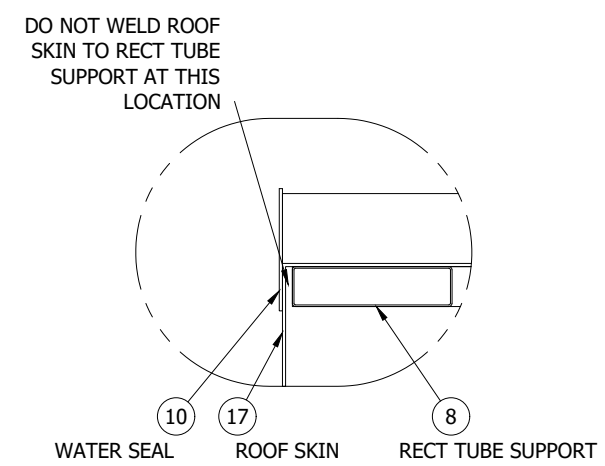
9 ROOF SECTION ASSEMBLY
3 NTS



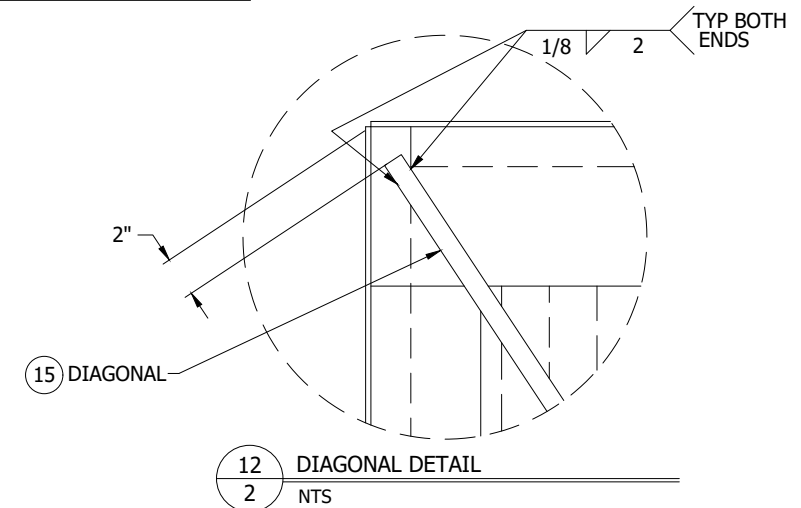
10 ROOF SECTION ASSEMBLY
3 NTS



11 ROOF SECTION
- NTS



11A ROOF SECTION
- NTS



12 DIAGONAL DETAIL
2 NTS

FOR OFFICE USE ONLY



NOTE:
REF SHEET 6 FOR DESCRIPTION OF LINE ITEMS

A		REVISED NOTES, CHANGED ENGINEER OF RECORD	NS	MMM	MMM	-	1/15/21
CHANGE LETTER	REVISION DESCRIPTION		DWN. BY:	CHK'D. BY:	APP'VD. BY:	APP'VD. BY:	DATE
DWN. BY: WRT	CHK. BY: DJR	APP'VD. BY: DJR	APP'VD. BY:	PLOT SCALE		ECN	
DATE: 6/26/6	DATE: 7/7/6	DATE: 7/7/6	DATE:	NONE			
SHEET 5 OF 11		PHB6625D PENTHOUSE DETAILS		60-022425-00D			

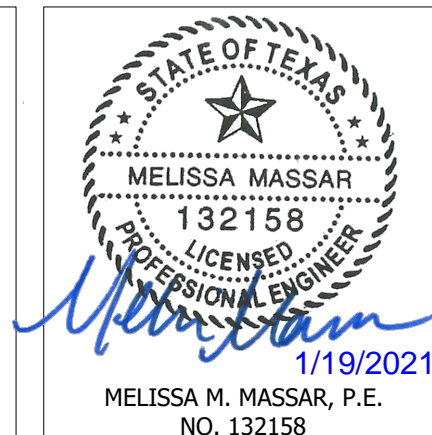


LINE ITEM	SHEET NUMBER	MATERIAL	DESCRIPTION	RUSKIN NUMBER
1	7	6063-T6 ALUM	LOUVER HEAD FRAME	70-021995-00B
2	7	6063-T6 ALUM	LOUVER SILL FRAME	70-022627-00B
3	7	6063-T6 ALUM	LOUVER JAMB FRAME	70-022227-00B
4	7	6063-T6 ALUM	LOUVER BLADE	70-020748-00B
5	8	6063-T5 ALUM	.580"X3.160"X.580"X.080"X84" HHBS	RSM7001
6	8	6063-T5 ALUM	.580"X3.160"X.580"X.080"X96" HHBS	RSM7001
7	8	6063-T5 1/8" ALUM	6"X3" RECT. TUBE ROOF SUPPORT	-
8	8	6063-T6 1/8" ALUM	4"X1" RECT. TUBE SUPPORT (SHORT)	-
9	9	6063-T6 1/8" ALUM	4"X1" RECT. TUBE SUPPORT (LONG)	-
10	9	5005-H34 1/8" ALUM	WATER SEAL	-
11	9	3003-H14 3/8" ALUM	SPECIAL LIFTING LUG	-
12	10	5005-H34 .080" ALUM	LEFT HAND CORNER FLASHING	-
13	10	5005-H34 .080" ALUM	RIGHT HAND CORNER FLASHING	-
14	2	6063-T6 ALUM	2"X2"X1/4"X48" ANGLE	-
15	-	6063-T5 ALUM	DIAGONAL 1"X1/8" THK. BAR	-
16	-	CARBON STEEL, ZC	#10-16 X 1" SELF DRILLING SCREW	-
17	10	5005-H34 .080" ALUM	PENTHOUSE ROOF SKIN	-
18	11	5052 ALUM	12372AA8X96 HINGE-1/8" THK., 3/8" PIN, 2" KNUCKLE	-
19	10	5005-H34 ALUM	1 1/2"X1 1/2"X1/8"X2" CLIP ANGLE	85-020366-00B
20	-	CARBON STEEL, ZC	1/4-20 X 2 1/2" HHB W/ LOCKWASHER & HEX NUT	-
21	-	CARBON STEEL, ZC	3/8-16 X 1 1/2" HHB W/ WASHER, LOCKWASHER & HEX NUT	-
21A	-	CARBON STEEL, ZC	3/8-16 X 1 1/2" CARBON STEEL SELF TAPPING SCREW	-
22	11	5005-H34 ALUM	4 7/16"X95 7/8"X.080" HINGED DOOR END PLATE	-
23	3	5005-H34 ALUM	EXTENDED SILL .125" THK. FORMED	-
24	3	6063-T6 ALUM	EXTENDED SILL 2"X3"X1/4" ANGLE	-
25	-	-	BLANKOFF X" X Y" ALUM. SHEET	-

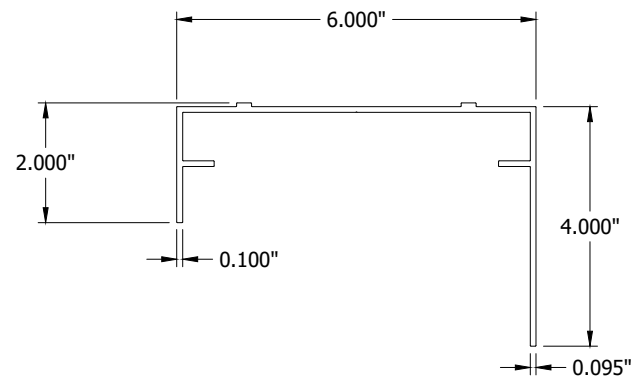
CURB SUBSTRATE FASTENER TABLE 2 (BY OTHERS)

SUBSTRATE TYPE	MIN. SUBSTRATE REQUIREMENTS	FASTENER TYPE	MIN. EMBEDMENT	MIN. EDGE DISTANCE
WOOD	0.42 SPECIFIC GRAVITY	3/8" DIA. LAG SCREW	3"	1 1/2"
STEEL	12 GA, 45 KSI TENSILE STRENGTH, 33 KSI YIELD STRENGTH	1/4" DIA. SELF TAPPING SCREW	3 THREADS BEYOND SUB.	3/8"
CONCRETE	2500 PSI COMP. STRENGTH	3/8" DIA. HILTI KWIK BOLT 3, CARBON STEEL	2 1/2"	2 1/2"

FOR OFFICE USE ONLY

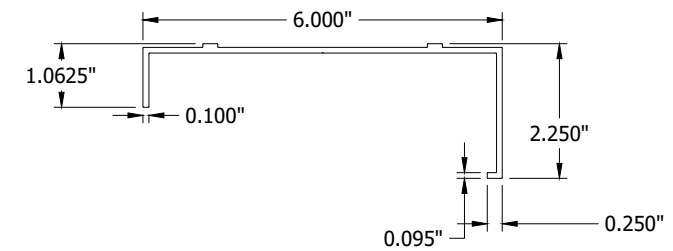


CHANGE LETTER	REVISION DESCRIPTION	NS	MMM	MMM	-	1/15/21
DWN. BY: WRT	CHK. BY: DJR	APPV'D. BY: DJR	APPV'D. BY:	PLOT SCALE: NONE		
DATE: 6/26/6	DATE: 7/7/6	DATE: 7/7/6	DATE:	ECN		
SHEET 6 OF 11				TITLE: PHB6625D PENTHOUSE ITEM LIST AND APPROVED ATTACHMENTS TABLE		
				DWG. NO. 60-022425-00D		



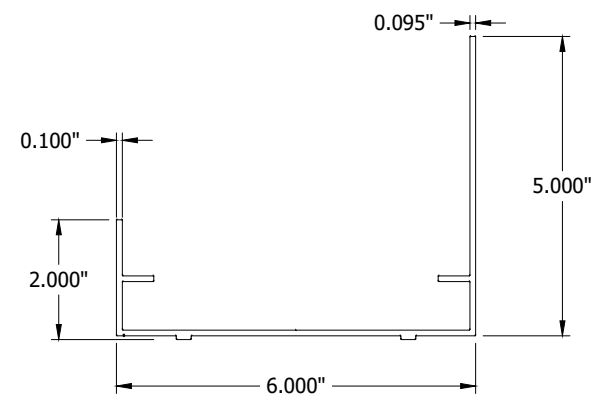
ITEM 1 - LOUVER HEAD FRAME

NTS



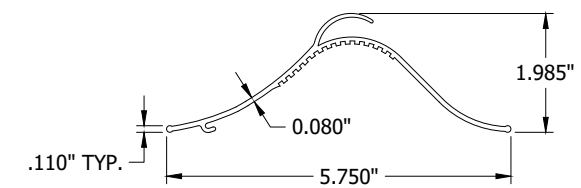
ITEM 3 - LOUVER JAMB FRAME

NTS



ITEM 2 - LOUVER SILL FRAME

NTS

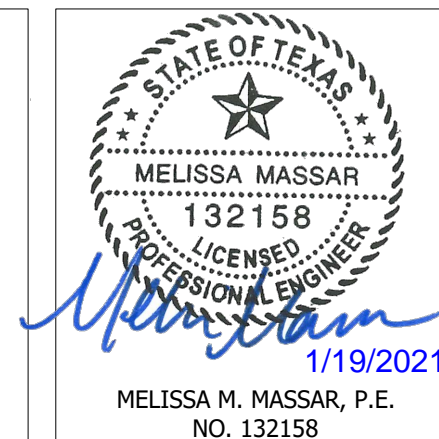


ITEM 4 - LOUVER BLADE

NTS

NOTES:
1. REF. SHEET 6 FOR MATERIAL.

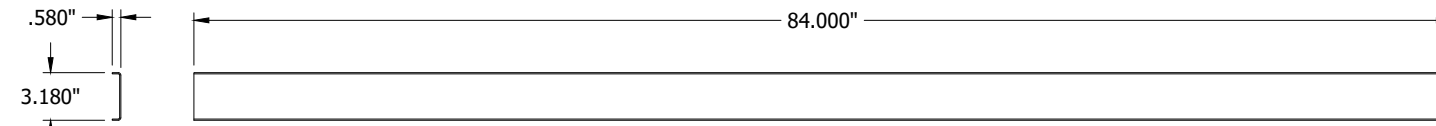
FOR OFFICE USE ONLY



DWN. BY: WRT	CHK. BY: DJR	APPV'D. BY: DJR	APPV'D. BY:
DATE: 6/26/16	DATE: 7/7/16	DATE: 7/7/16	DATE:

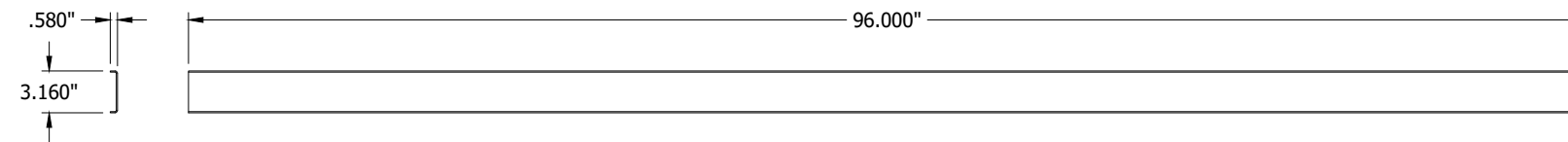
SHEET 7 OF 11

(A)	REVISED NOTES, CHANGED ENGINEER OF RECORD	NS	MMM	MMM	-	1/15/21
CHANGE LETTER:	REVISION DESCRIPTION	DWN. BY:	CHK'D. BY:	APPV'D. BY:	APPV'D. BY:	DATE
		<small>3900 DR. GREAVES RD GRANDVIEW, MO 64030</small>		PLOT SCALE: NONE		ECN:
TITLE: PHB6625D PENTHOUSE PART DETAILS		DWG. NO.: 60-022425-00D				



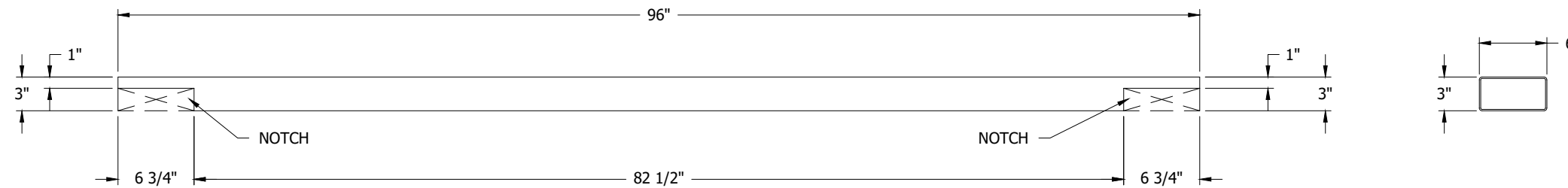
ITEM 5 - .580"X3.160"X.580"X.080"X84" HHBS

NTS



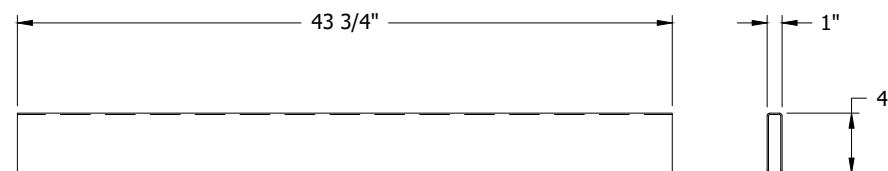
ITEM 6 - .580"X3.160"X.580"X.080"X96" HHBS

NTS



ITEM 7 - 6"X3" ROOF SUPPORT

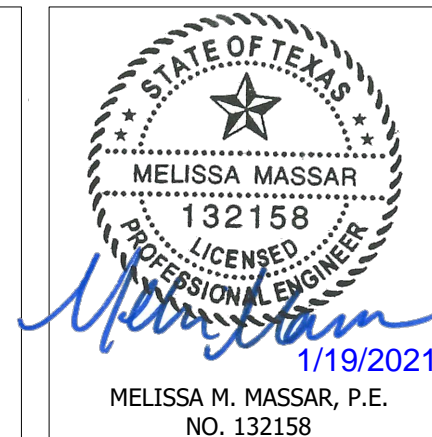
NTS



ITEM 8 - 4"X1" SUPPORT (SHORT)

NTS

FOR OFFICE USE ONLY



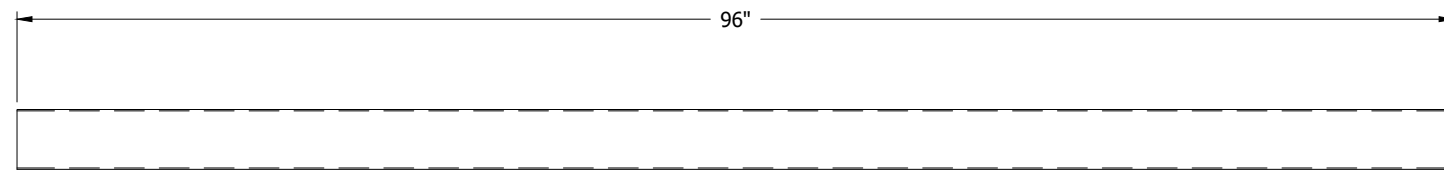
MELISSA M. MASSAR, P.E.
NO. 132158

NOTES:
1. REF. SHEET 6 FOR MATERIAL.

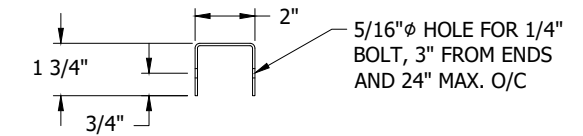
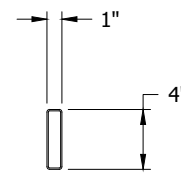
DWN. BY: WRT	CHK. BY: DJR	APPV'D. BY: DJR	APPV'D. BY:
DATE: 6/26/16	DATE: 7/7/16	DATE: 7/7/16	DATE:

(A)	REVISED NOTES, CHANGED ENGINEER OF RECORD	NS	MMM	MMM	-	1/15/21
CHANGE LETTER:	REVISION DESCRIPTION	DWN. BY:	CHKD. BY:	APPV'D. BY:	APPV'D. BY:	DATE
		<small>3900 DR. GREAVES RD GRANDVIEW, MO 64030</small>		PLOT SCALE NONE		ECN
TITLE PHB6625D PART DETAILS					DWG. NO. 60-022425-00D	

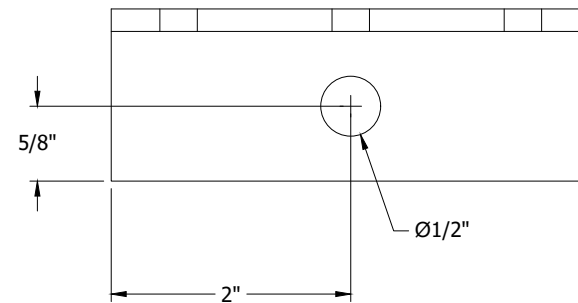
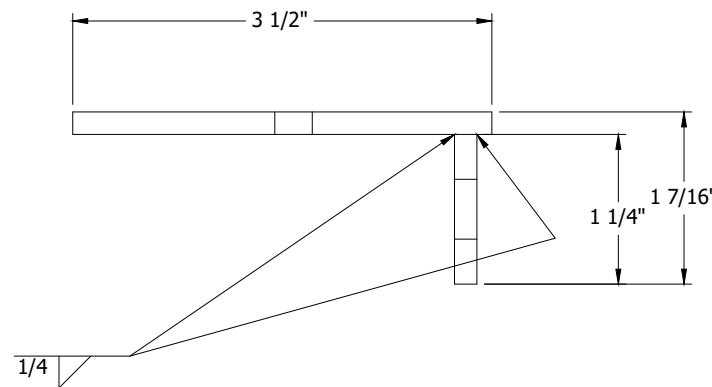
SHEET 8 OF 11



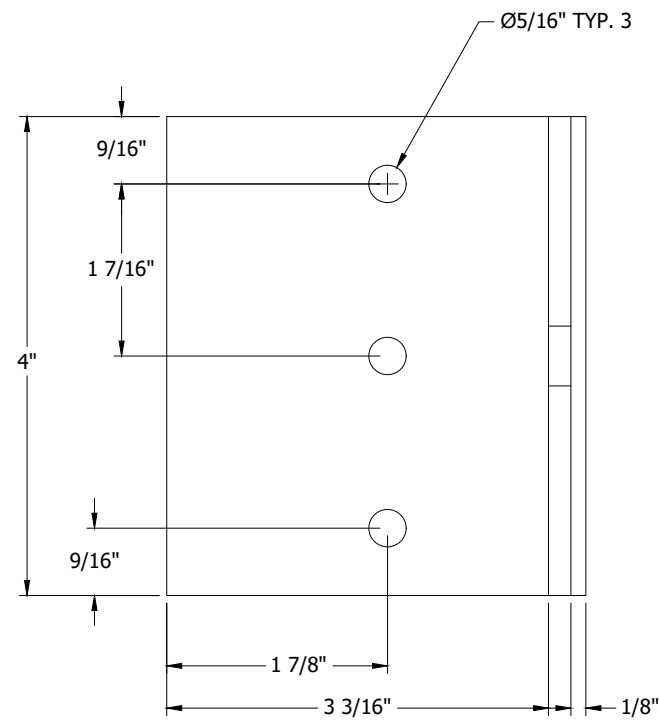
ITEM 9 - 4"X1" SUPPORT (LONG)
NTS



ITEM 10 - WATER SEAL
NTS
LENGTH: 96 7/16"

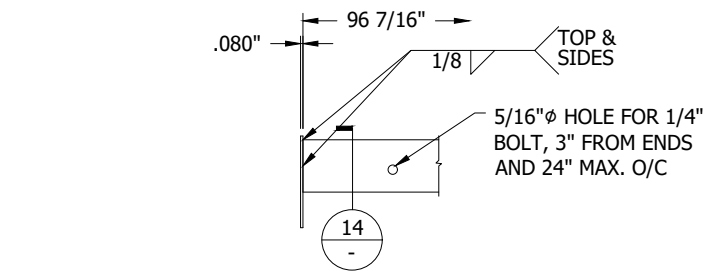


ITEM 11 - SPECIAL LIFTING LUG
NTS

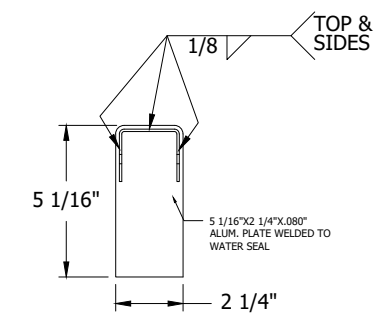


NOTES:
1. REF SHEET 6 FOR MATERIAL.

FOR OFFICE USE ONLY

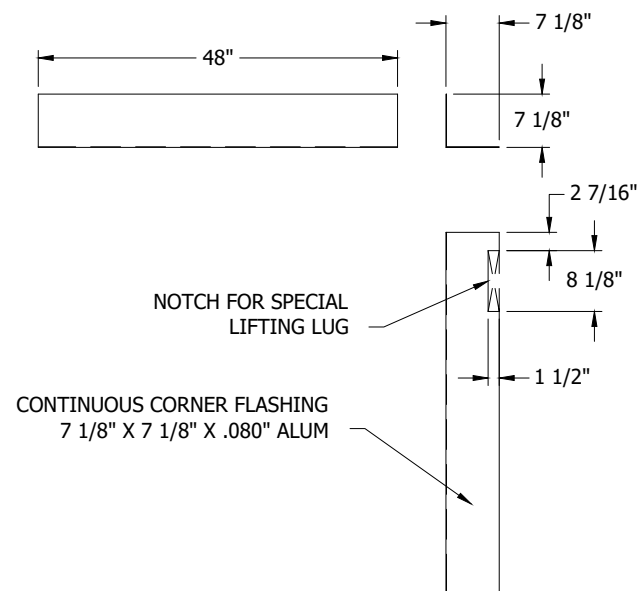


13 WATER SEAL AT END
NTS



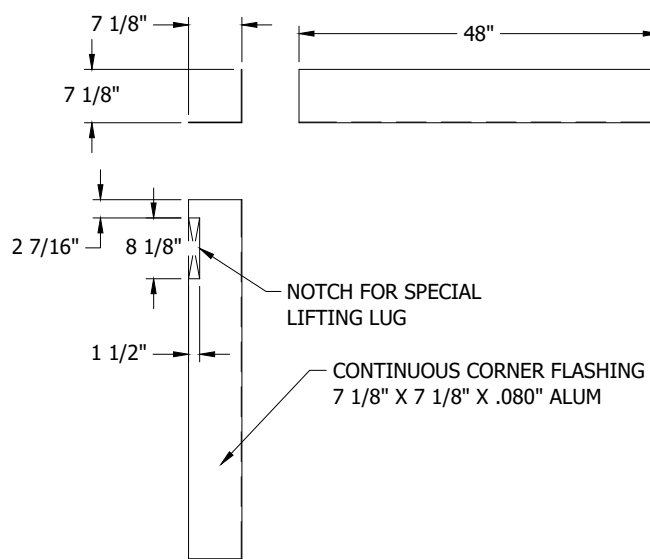
14 WATER SEAL AT END DETAIL
NTS

DWN. BY: WRT		CHK. BY: DJR	APPV'D. BY: DJR	APPV'D. BY:	REVISION (A) REVISED NOTES, CHANGED ENGINEER OF RECORD		NS	MMM	MMM	-	1/15/21
DATE: 6/25/6	DATE: 7/7/6	DATE: 7/7/6	DATE:	DATE:	CHANGE LETTER:	REVISION DESCRIPTION	DWN. BY:	CHK'D. BY:	APPV'D. BY:	APPV'D. BY:	DATE
SHEET 9 OF 11					3900 DR. GREAVES RD GRANDVIEW, MO 64030		PLOT SCALE: NONE		ECN		
TITLE: PHB6625D PENTHOUSE PART DETAILS							DWG. NO.: 60-022425-00D				



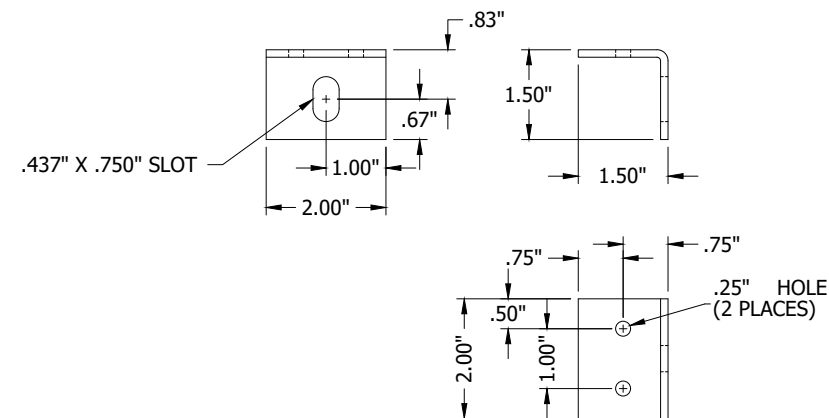
ITEM 12 - LEFT HAND CORNER FLASHING

NTS



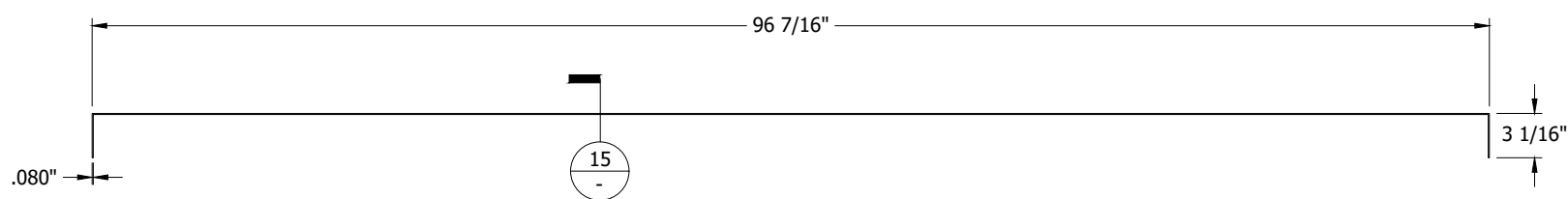
ITEM 13 - RIGHT HAND CORNER FLASHING

NTS



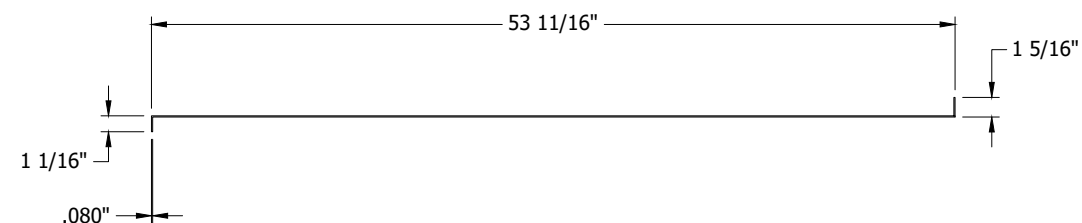
ITEM 19 - 1 1/2" X 1 1/2" X 1/8" X 2" CLIP ANGLE

NTS



ITEM 17 - PENTHOUSE ROOF SKIN

NTS

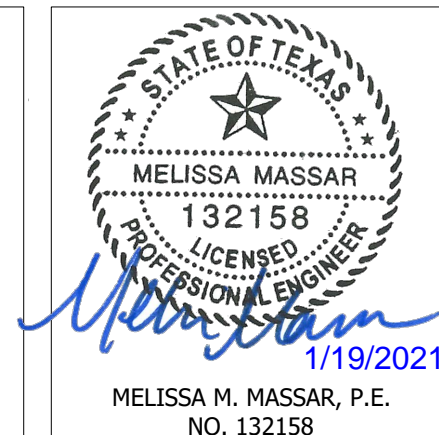


15 - PENTHOUSE ROOF SKIN SECTION

NTS

NOTES:
1. REF SHEET 6 FOR MATERIAL.

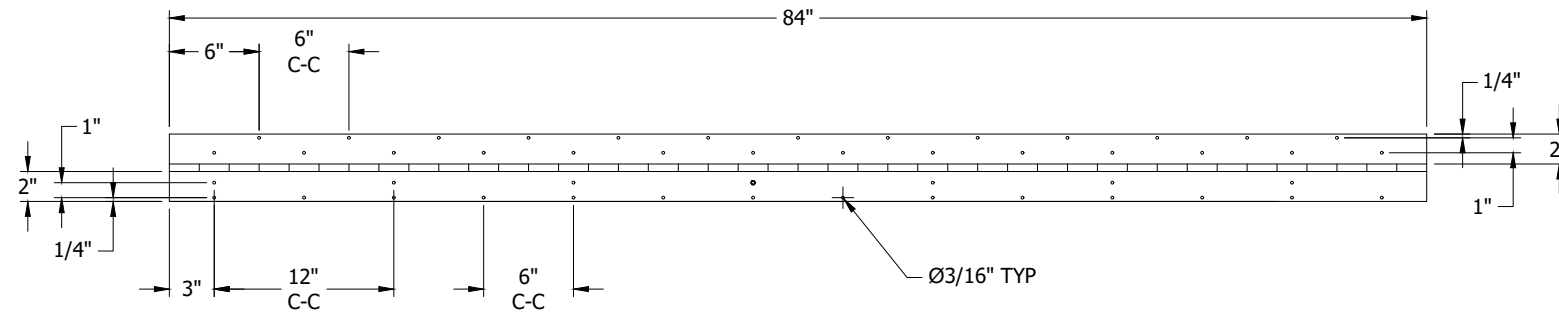
FOR OFFICE USE ONLY



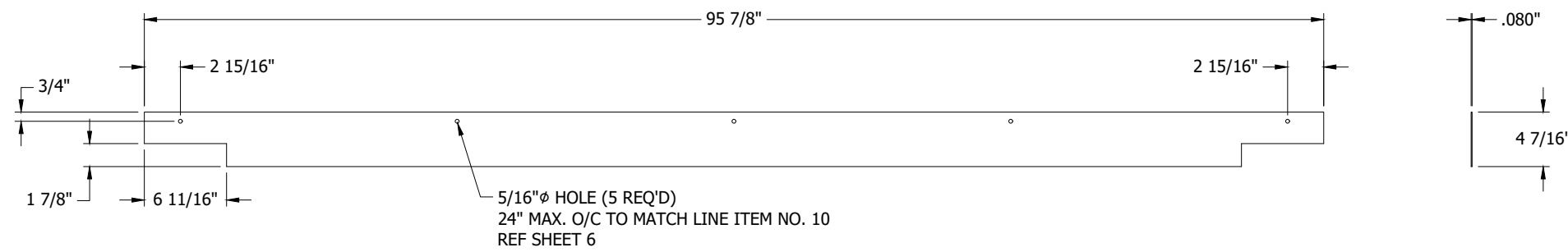
DWN. BY: WRT	CHK. BY: DJR	APPV'D. BY: DJR	APPV'D. BY:
DATE: 6/25/6	DATE: 7/7/6	DATE: 7/7/6	DATE:

SHEET 10 OF 11

(A)	REVISED NOTES, CHANGED ENGINEER OF RECORD	NS	MMM	MMM	-	1/15/21
CHANGE LETTER:	REVISION DESCRIPTION	DWN. BY:	CHKD. BY:	APPV'D. BY:	APPV'D. BY:	DATE
		PLOT SCALE: NONE		ECN		
TITLE: PHB6625D PENTHOUSE PART DETAILS		DWG. NO. 60-022425-00D				



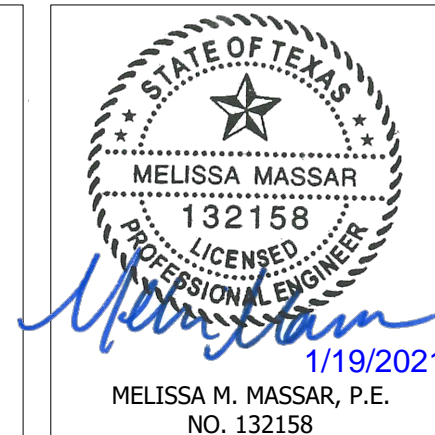
ITEM 18 - HINGE
NTS



ITEM 22 - 4 7/16"X95 7/8"X.080" HINGED DOOR END PLATE
NTS

NOTES:
1. REF SHEET 6 FOR MATERIAL.

FOR OFFICE USE ONLY



DWN. BY: WRT	CHK. BY: DJR	APPV'D. BY: DJR	APPV'D. BY:
DATE: 6/25/16	DATE: 7/7/16	DATE: 7/7/16	DATE:

SHEET 11 OF 11

(A)	REVISED NOTES, CHANGED ENGINEER OF RECORD	NS	MMM	MMM	-	1/15/21
CHANGE LETTER	REVISION DESCRIPTION	DWN. BY:	CHK'D. BY:	APPV'D. BY:	APPV'D. BY:	DATE
	RUSKIN 3900 DR. GREAVES RD. GRANDVIEW, MO 64030	PLOT SCALE		ECN		
TITLE				DWG. NO.		
PHB6625D PENTHOUSE PART DETAILS				60-022425-00D		