

| PARTS LIST FOR STANDARD CONSTRUCTION | | | |
|--------------------------------------|---------------------------------------|----------------------------|---------|
| ITEM # | DESCRIPTION | MATERIAL | ALLOY |
| 1 | HEAD FRAME | 0.094" THK. EXTRUDED ALUM. | 6063-T6 |
| 2 | SILL FRAME | 0.080" THK. EXTRUDED ALUM. | 6063-T6 |
| 3 | JAMB FRAME | 0.080" THK. EXTRUDED ALUM. | 6063-T6 |
| 4 | BLADE | 0.060" THK. EXTRUDED ALUM. | 6063-T6 |
| 5 | BLADE BRACE | 0.070" THK. EXTRUDED ALUM. | 6063-T6 |
| 6 | H.V.B.S STRAP | 0.125" THK. EXTRUDED ALUM. | 6063-T6 |
| 7 | SCR 8-18 X 3.00 HWH AB W/SEAL WASHER | 410 SS/ZINC COATED | - |
| 8 | SCR 10-16 X 3.00 HWH AB W/SEAL WASHER | 410 SS/ZINC COATED | - |

| MULTI SECTION CONNECTION PARTS | | | |
|--------------------------------|-----------------------|--------------------------|---------|
| ITEM # | DESCRIPTION | MATERIAL | ALLOY |
| 9 | MULLION SUPPORT ANGLE | 0.125" THK EXTRUDED ALUM | 6063-T6 |

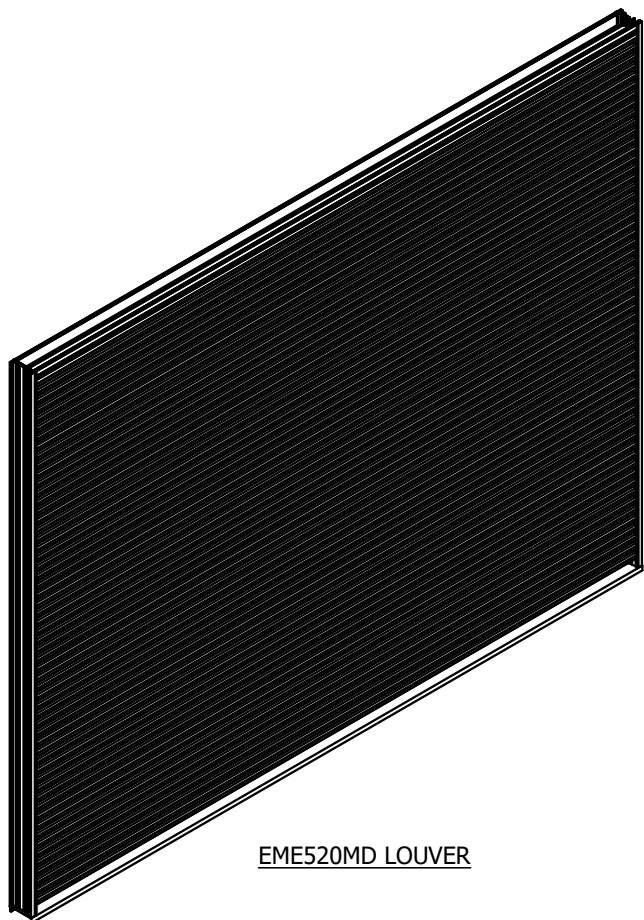
| INSTALLATION PARTS | | | |
|--------------------|---|---------------------------|----------|
| ITEM # | DESCRIPTION | MATERIAL | ALLOY |
| 10 | ATTACHMENT CLIP ANGLE, 2" LG. | 0.250" THK EXTRUDED ALUM. | 6063-T6 |
| 11 | CLIP ANGLE - FORMED, 2" LG. | 0.250" THK FORMED ALUM. | 3003-H14 |
| 12 | CLIP ANGLE - FORMED, 4" LG. | 0.250" THK FORMED ALUM. | 3003-H14 |
| 13 | ATTACHMENT CLIP ANGLE, CONT. | 0.250" THK EXTRUDED ALUM. | 6063-T6 |
| 14 | CLIP ANGLE - FORMED, CONT. | 0.250" THK FORMED ALUM. | 3003-H14 |
| 15 | STRUCTURAL ATTACHMENT ANGLE, CONT. | 0.500" THK A36 STL | - |
| 16 | STRUCTURAL ATTACHMENT ANGLE, 28" LG. | 0.625" THK A36 STL | - |
| 17 | MULLION SUPPORT ATTACHMENT PLATE | .250" THK A36 STL | - |
| 18 | SCREW #10-16 X 1.500" LG. HWH SDS | 410SS/ZINC COATED | - |
| 19 | 3/8-16 X 1.500" LG A307 GRADE A HHB W/ WASHER & LOCKNUT | ZINC PLATED | - |
| 20 | 3/8-16 X 2.000" LG A307 GRADE A HHB W/ WASHER & LOCKNUT | ZINC PLATED | - |
| 21 | 3/8-16 X 2.500" LG A307 GRADE A HHB W/ WASHER & LOCKNUT | ZINC PLATED | - |
| 22 | 5/8-11 X 2.000" LG A307 GRADE A HHB W/ WASHER & LOCKNUT | ZINC PLATED | - |
| 23 | SUBSTRATE FASTENER (BY OTHERS) | VARIES (REF TABLE 1/08) | - |

| UNIVERSAL SLEEVE PARTS | | | |
|------------------------|---|--------------------------|----------|
| ITEM # | DESCRIPTION | MATERIAL | ALLOY |
| 24 | HEAD FRAME W/INTEGRAL FLANGE | .094" THK EXTRUDED ALUM. | 6063-T6 |
| 25 | SILL FRAME W/INTEGRAL FLANGE | .080" THK EXTRUDED ALUM. | 6063-T6 |
| 26 | JAMB FRAME W/INTEGRAL FLANGE | .080" THK EXTRUDED ALUM. | 6063-T6 |
| 27 | FRONT FLANGE UNIVERSAL SLEEVE | .250" THK FORMED ALUM. | 3003-H14 |
| 28 | CONT. RETAINING ANGLE | .250" THK EXTRUDED ALUM. | 6063-T6 |
| 29 | US MULLION ATTACHMENT ANGLE, 6" LG. | .250" THK EXTRUDED ALUM. | 6063-T6 |
| 30 | 1/2-13 X 2.500" LG A307 GRADE 5 HHB W/ WASHER & LOCKNUT | ZINC PLATED | - |
| 31 | SCREW 1/4-20 X 1.000" LG. HWH SDS | 410SS/ZINC COATED | - |

| MULLION SUPPORT OPTIONS BASED ON SECTION HEIGHT | | | | |
|---|---------------------|---------------------------|------------------|-------|
| ITEM # | DESCRIPTION | LOUVER HEIGHT RANGE | MATERIAL | ALLOY |
| 32 | CHAN C3 X 4.1 X 20' | GREATER THAN 12" TO 103" | A36 CARBON STEEL | - |
| 33 | CHAN C4 X 5.4 X 20' | GREATER THAN 103" TO 116" | A36 CARBON STEEL | - |
| 34 | CHAN C5 X 6.7 X 20' | GREATER THAN 116" TO 133" | A36 CARBON STEEL | - |
| 35 | CHAN C6 X 8.2 X 20' | GREATER THAN 133" TO 144" | A36 CARBON STEEL | - |

NOTES

- THE EME520MD COMPLIES WITH THE REQUIREMENTS OF THE 2018 IBC. THE EME520MD HAS BEEN TESTED IN ACCORDANCE WITH FLORIDA PROTOCOLS TAS-201, 202 & 203 FOR LARGE MISSILE IMPACT, UNIFORM PRESSURE AND CYCLIC WIND PRESSURE.
- THIS LOUVER SYSTEM IS APPROVED FOR APPLICATIONS WITH DESIGN PRESSURES OF ± 120 PSF OR LESS.
- THIS LOUVER SYSTEM IS TO BE INSTALLED IN LOCATIONS WHERE THE ROOM BEHIND THE LOUVER IS DESIGNED TO DRAIN WATER PENETRATING INTO THE ROOM AND THE ROOM WILL HOUSE WATER RESISTANT / WATER PROOF EQUIPMENT, COMPONENTS OR SUPPLIES.
- THIS LOUVER SYSTEM IS NON-BEARING AND IS NOT DESIGNED TO WITHSTAND BUILDING DEAD LOADS.
- IT SHALL BE THE RESPONSIBILITY OF PERMIT HOLDER/BUILDING DESIGN ENGINEER OF RECORD TO VERIFY THE STRUCTURAL INTEGRITY OF THE STRUCTURE TO SUPPORT THE LOADS IMPOSED BY THIS LOUVER SYSTEM.
- MAXIMUM SINGLE SECTION SIZE : **87 15/16" WIDE X 144" HIGH** OR **144" WIDE X 112" HIGH**.
- MAXIMUM ASSEMBLED LOUVER SIZE : **UNLIMITED WIDE X 144" HIGH** W/SECTION MULLIONS AT **87 7/8"** (TRAPEZOIDS ALLOWED)
- SECTIONS OR ASSEMBLIES MAY BE STACKED VERTICALLY PROVIDED SUITABLE STRUCTURAL SUPPORT IS DESIGNED AND INSTALLED BY OTHERS TO SUPPORT ALL LOADS TRANSFERRED FROM THE LOUVER.
- ALL CMU BLOCKS MUST BE GROUT FILLED. MIN. PRISM STRENGTH OF 1500 PSI AT TIME OF INSTALLATION. CMU BLOCKS MUST BE MIN. TYPE 1, GRADE N, LIGHT MEDIUM OR NORMAL WEIGHT PER ASTM C90. GROUT AND MORTAR MUST COMPLY WITH FLORIDA BUILDING CODE.
- PART NUMBERS WITH SQUARE BALLOONS ARE "SHIPPED LOOSE PARTS".
- ALL FASTENERS SHALL BE CORROSION RESISTANT.



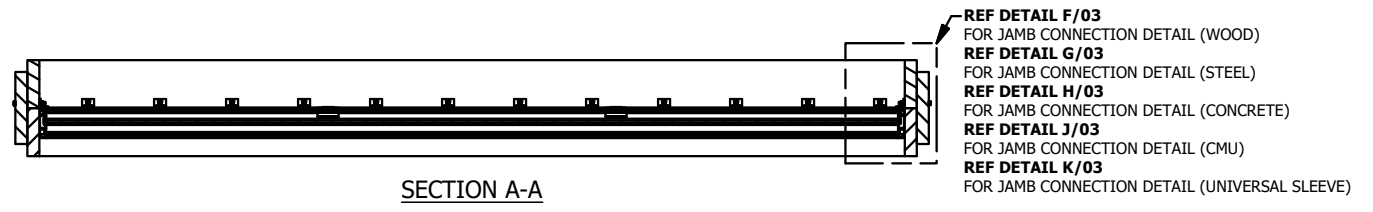
EME520MD LOUVER

ABBREVIATIONS:

- CONT. - CONTINUOUS
- C-C - CENTER TO CENTER
- D - SUBSTRATE DEPTH
- DIM. - DIMENSION
- FLG. - FLANGE
- HDG - HOT DIPPED GALVANIZED
- H.V.B.S. - HIDDEN VERTICLE BLADE SUPPORT
- H.H.B.S. - HIDDEN HORIZONTAL BLADE SUPPORT
- HWH - HEX WASHER HEAD
- L.D. - LOUVER DIMENSION
- MAX. - MAXIMUM
- MIN. - MINIMUM
- NOM. - NOMINAL
- N.T.E. - NOT TO EXCEED
- N.T.S. - NOT TO SCALE
- O/C - ON CENTER
- OPP. - OPPOSITE
- R.O. - ROUGH OPENING
- REF. - REFERENCE
- S.S. - SHIP SECTION
- S.S.D. - SHIP SECTION DIMENSION
- S.D.S. - SELF DRILLING SCREW
- SIM. - SIMILAR
- STL - STEEL
- SUB. - SUBSTRATE
- TYP. - TYPICAL
- U.N.O. - UNLESS NOTED OTHERWISE

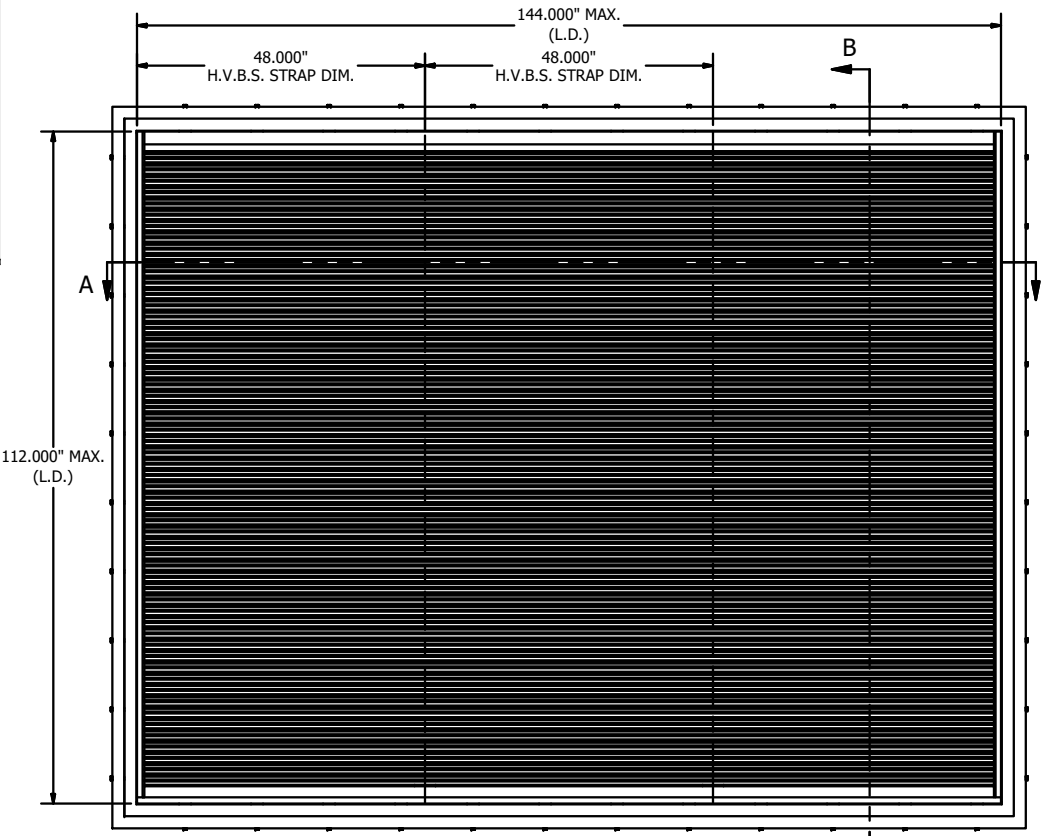
DRAWING SHEET INDEX:

- SHEET 01 - NOTES, PARTS LIST, DRAWING INDEX, ASSEMBLY "A"
- SHEET 02 - ASSEMBLY "A" - HEAD/SILL INSTALL (ALL SUBSTRATES)
- SHEET 03 - ASSEMBLY "A", "B" & "C" - JAMB INSTALL (ALL SUBSTRATES)
- SHEET 04 - ASSEMBLY "B" - BASIC ASSEMBLY
- SHEET 05 - ASSEMBLY "C" - BASIC ASSEMBLY
- SHEET 06 - ASSEMBLY "B" & "C" - MULLION SUPPORT CONNECTION @ HEAD/SILL
- SHEET 07 - ASSEMBLY "B" & "C" - VISIBLE MULLION CONNECTION (ALL SUBSTRATES)
- SHEET 08 - SUBSTRATE FASTENER TABLE, PARTS (ITEMS 1 THRU 6)
- SHEET 09 - PARTS (ITEMS 9 THRU 15)
- SHEET 10 - PARTS ITEMS 16 & 17, 24 THRU 28)
- SHEET 11 - PARTS (ITEMS 29, 32 THRU 35)



SECTION A-A

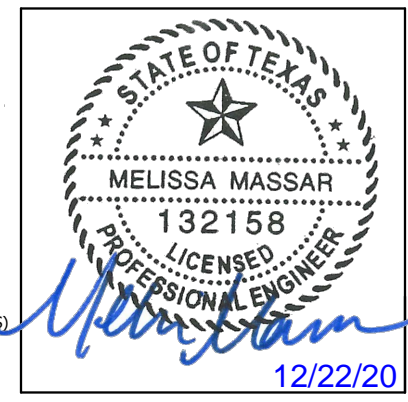
- REF DETAIL F/03 FOR JAMB CONNECTION DETAIL (WOOD)
- REF DETAIL G/03 FOR JAMB CONNECTION DETAIL (STEEL)
- REF DETAIL H/03 FOR JAMB CONNECTION DETAIL (CONCRETE)
- REF DETAIL J/03 FOR JAMB CONNECTION DETAIL (CMU)
- REF DETAIL K/03 FOR JAMB CONNECTION DETAIL (UNIVERSAL SLEEVE)



ASSEMBLY "A" - SINGLE SECTION VIEW
MAX. SHIP SECTION : 144" W X 112" H

- REF DETAIL A/02 FOR HEAD/SILL CONNECTION DETAIL (WOOD)
- REF DETAIL B/02 FOR HEAD/SILL CONNECTION DETAIL (STEEL)
- REF DETAIL C/02 FOR HEAD/SILL CONNECTION DETAIL (CONCRETE)
- REF DETAIL D/02 FOR HEAD/SILL CONNECTION DETAIL (CMU)
- REF DETAIL E/02 FOR HEAD/SILL CONNECTION DETAIL (UNIVERSAL SLEEVE)

SECTION B-B



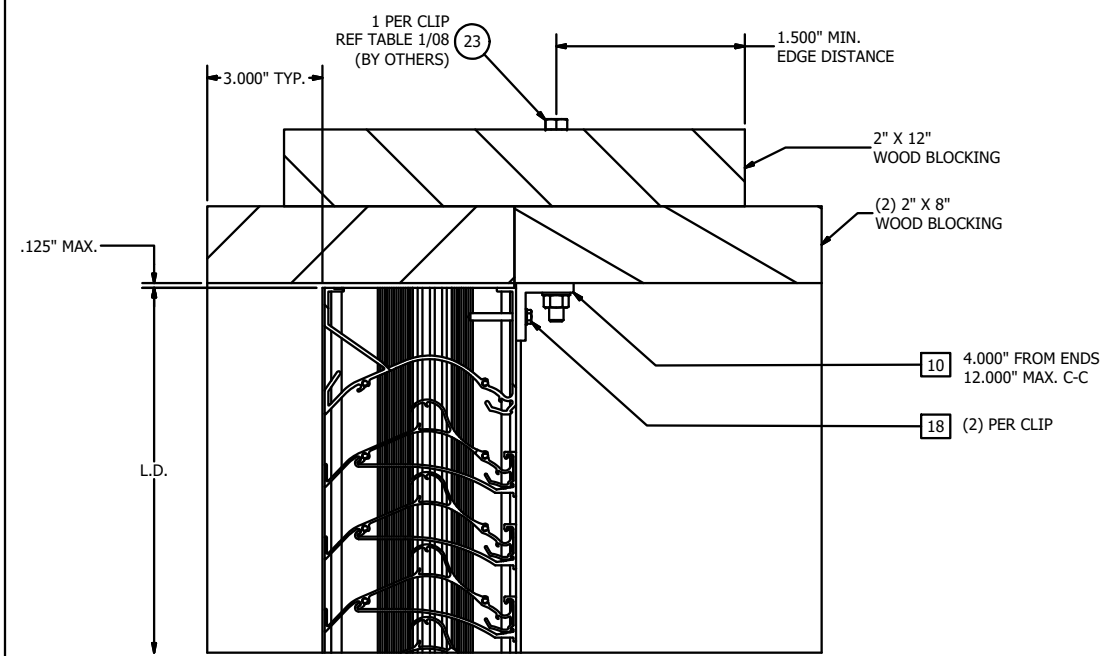
MELISSA M. MASSAR, P.E.
NO. 132158

| Tolerances |
|--|
| Unless Stated Otherwise Use WIQ-007, WIQ-008 |
| Fractions ±1/16 |
| Two Decimals ±0.020 |
| Three Decimals ±0.010 |
| Angle Dimensions ±2' |

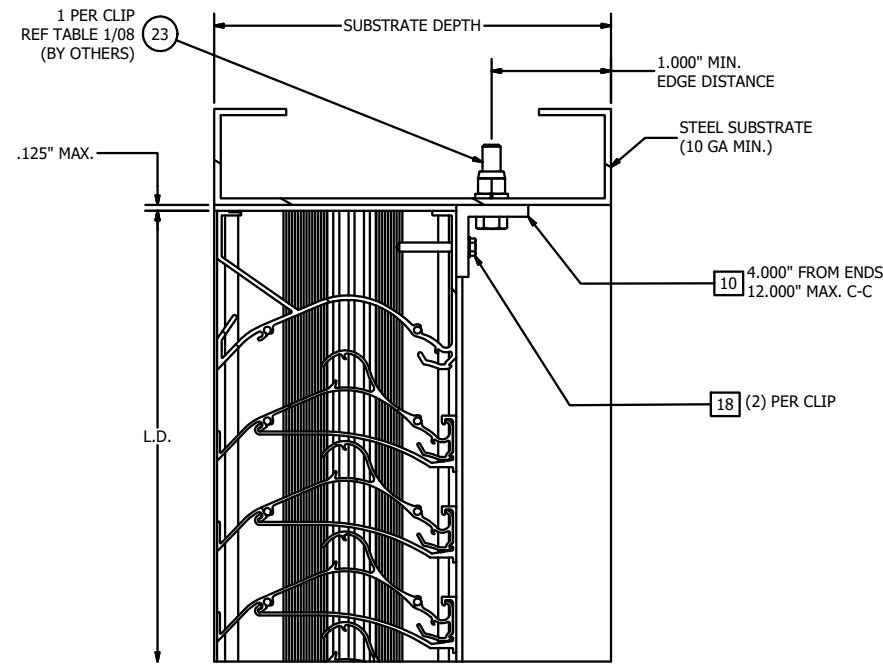
| REV | DESCRIPTION | BY | CHK | APVD | APVD | DATE |
|-----|---|------------|-----|------|------|----------|
| A | REV'D ENGINEER OF RECORD, UPDATED INFO. | JWS | JDS | WRT | MMM | 09/10/20 |
| 1 | JWS | 10/10/2014 | | | | |
| 2 | CGW | 10/10/2014 | | | | |
| 3 | CGW | 10/10/2014 | | | | |



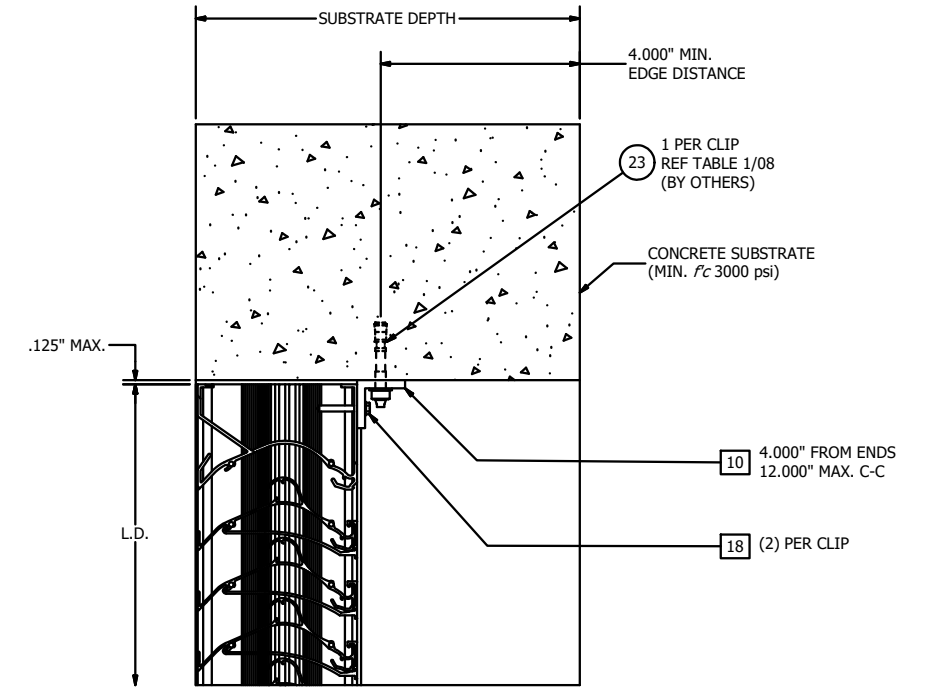
| PRODUCT | TITLE | SIZE | DWG NO | REV |
|--|--|----------|---------------|-----|
| EME520MD - WIND DRIVEN RAIN RESISTANT LOUVER | NOTES, PARTS LIST, DRAWING INDEX, ASSEMBLY 'A' | D | 60-022376-00B | A |
| SCALE | NONE | INVENTOR | SHEET 1 OF 11 | |



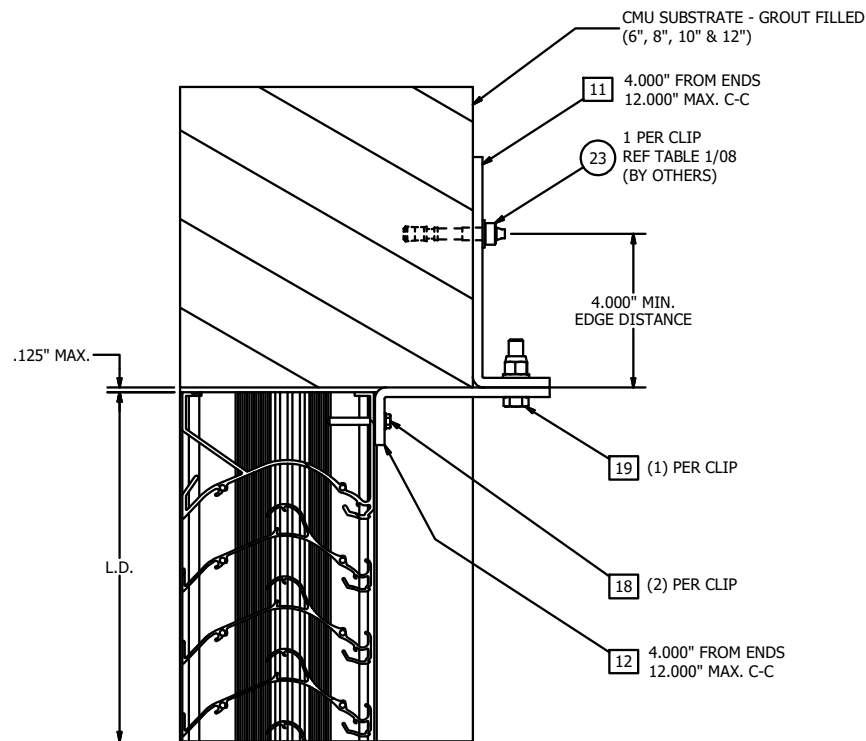
DETAIL A
ASSEMBLY 'A' - HEAD/SILL CONNECTION
(WOOD SUBSTRATE)



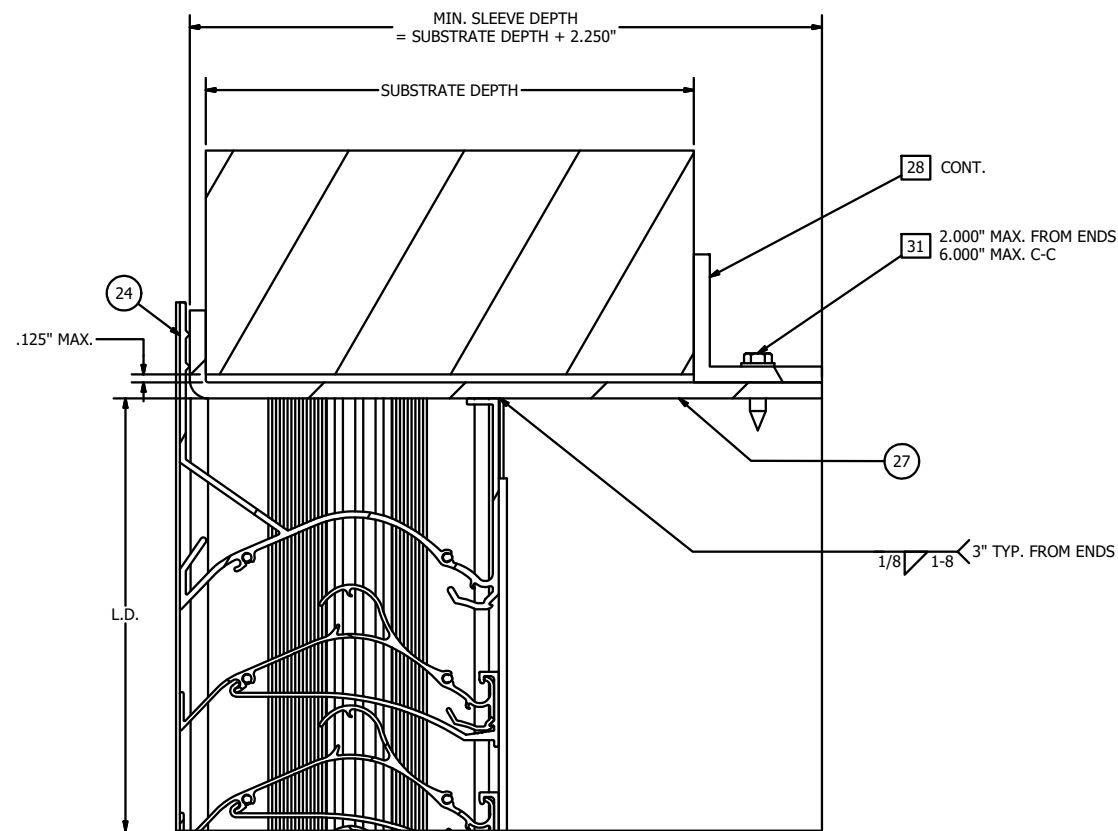
DETAIL B
ASSEMBLY 'A' - HEAD/SILL CONNECTION
(STEEL SUBSTRATE)



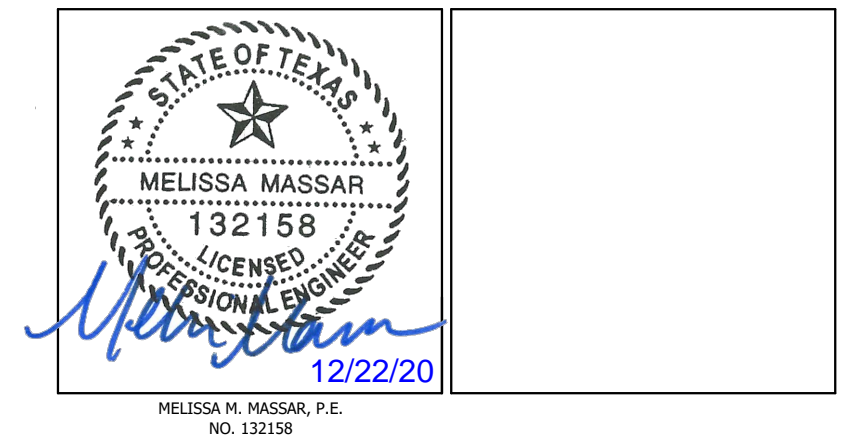
DETAIL C
ASSEMBLY 'A' - HEAD/SILL CONNECTION
(CONCRETE SUBSTRATE)



DETAIL D
ASSEMBLY 'A' - HEAD/SILL CONNECTION
(CMU SUBSTRATE)



DETAIL E
ASSEMBLY 'A' - HEAD/SILL CONNECTION
(UNIVERSAL SLEEVE)

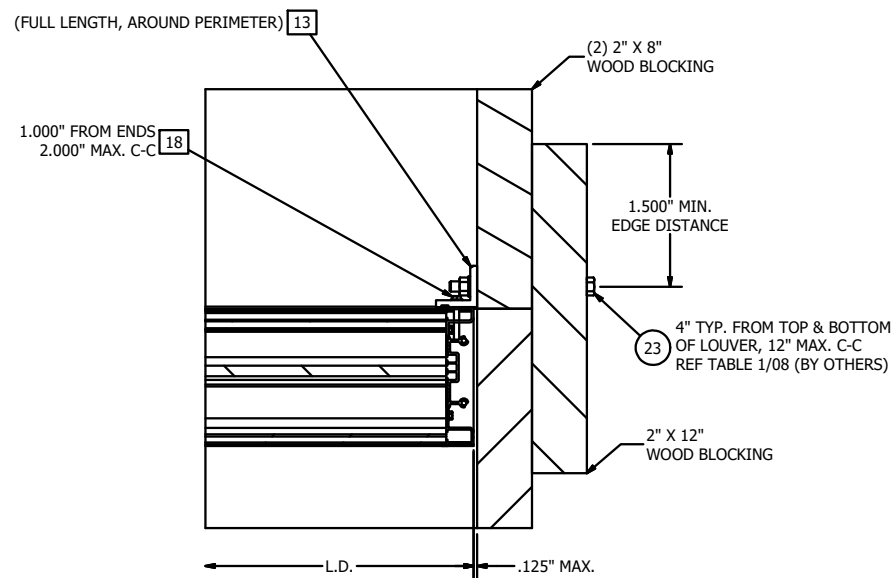


MELISSA M. MASSAR, P.E.
NO. 132158

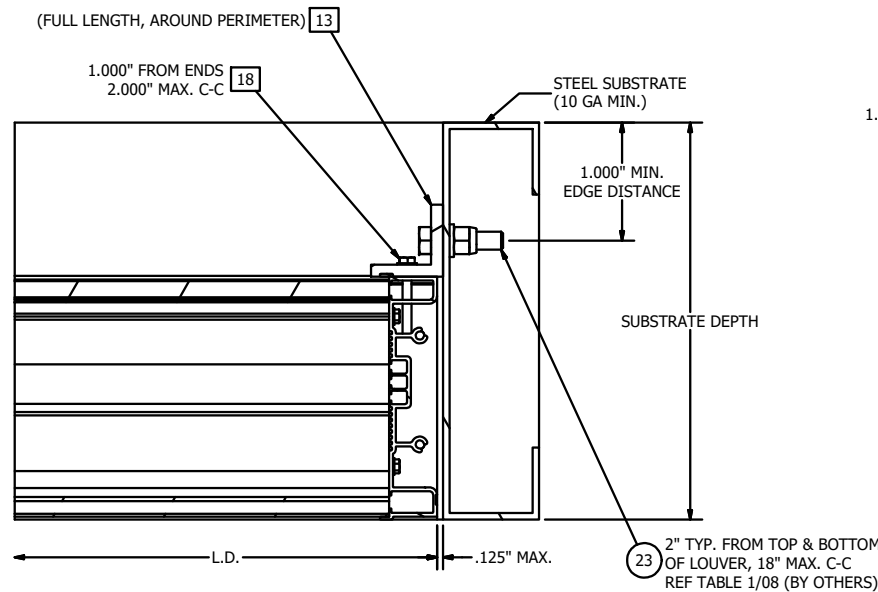
Tolerances
Unless Stated Otherwise
Use W10-007, W10-008
Fractions ±1/16
Two Decimals ±0.020
Three Decimals ±0.010
Angle Dimensions ±2'

| | | | | | | |
|----------|---|--|---------------|------|------|----------|
| A | REV'D ENGINEER OF RECORD, UPDATED INFO. | SSK/NS | JDS | WRT | MMM | 09/10/20 |
| REV | DESCRIPTION | BY | CHK | APVD | APVD | DATE |
| AUTHOR | J-W | 10/10/2014 | | | | |
| CHECKED | CGW | 10/10/2014 | | | | |
| APPROVED | CGW | 10/10/2014 | | | | |
| MATERIAL | PRODUCT | EMES20MD - WIND DRIVEN RAIN RESISTANT LOUVER | | | | |
| | TITLE | ASSEMBLY "A" - HEAD/SILL INSTALL DETAILS | | | | |
| SIZE | DWG NO | 60-022376-00B | REV | A | | |
| SCALE | NONE | INVENTOR | SHEET 2 OF 11 | | | |

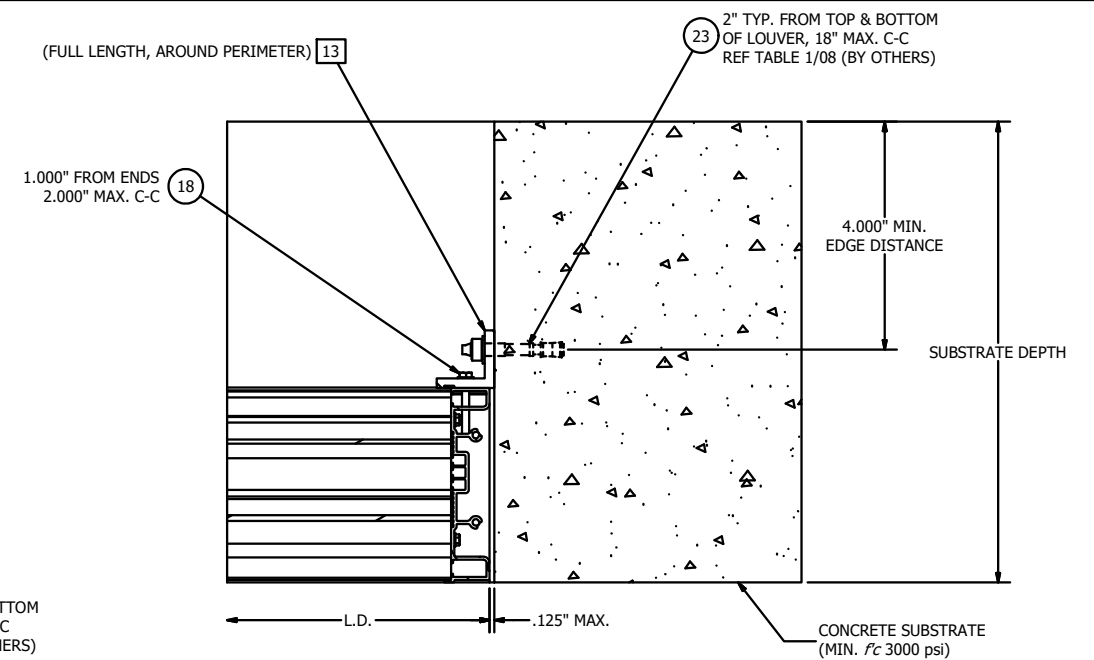
3900 Doctor Greaves Road,
Grandview, MO 64030
PROPRIETARY AND
CONFIDENTIAL



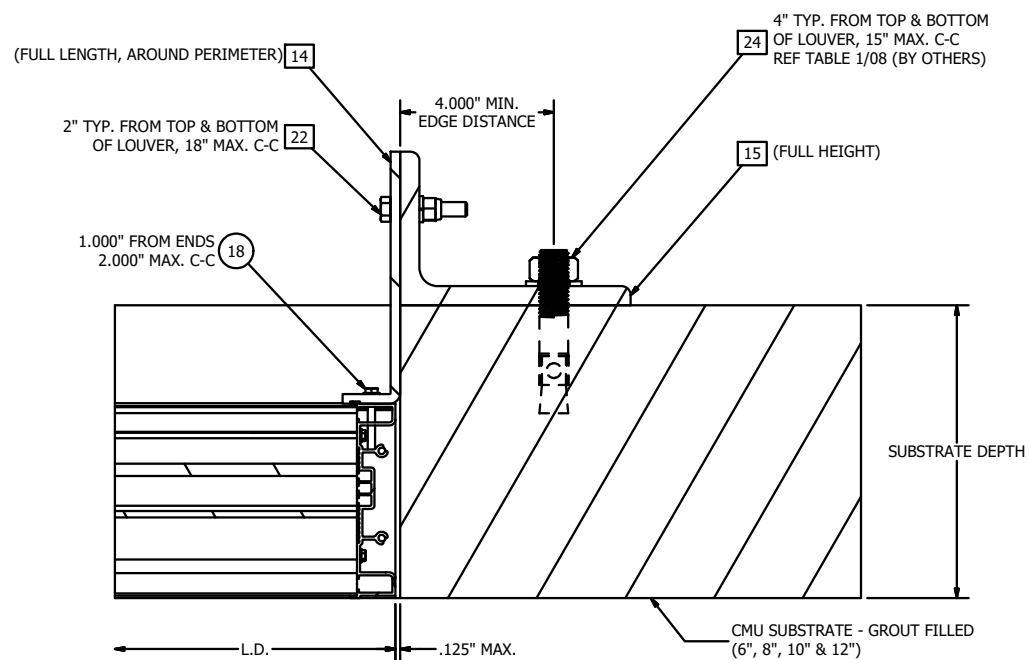
DETAIL F
ASSEMBLY 'A', 'B' & 'C' - JAMB CONNECTION
(WOOD SUBSTRATE)



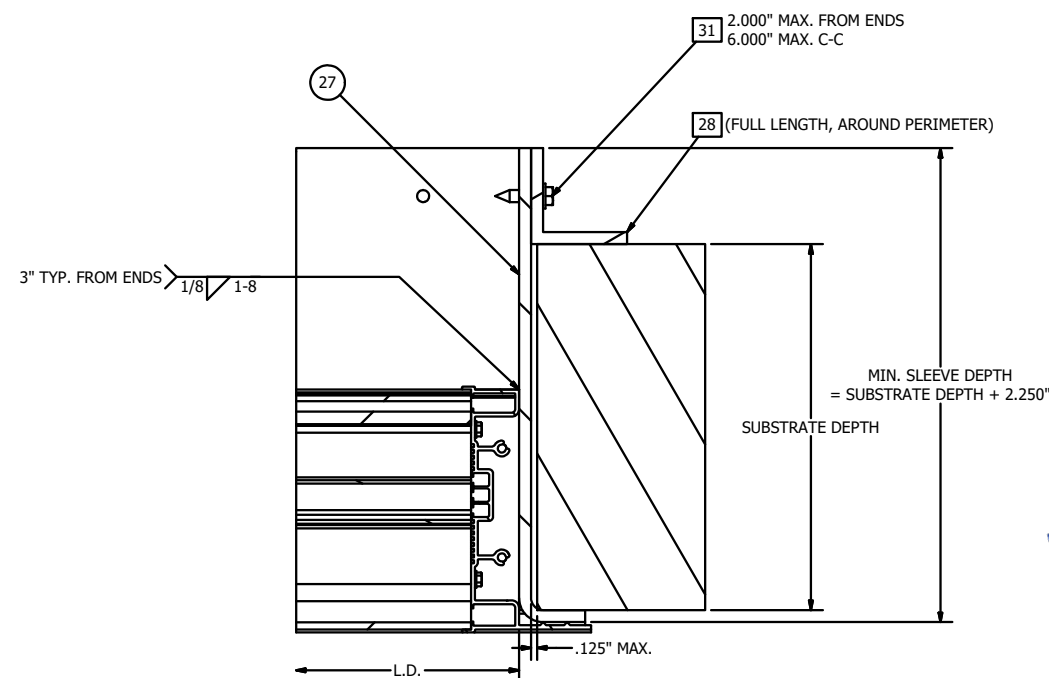
DETAIL G
ASSEMBLY 'A', 'B' & 'C' - JAMB CONNECTION
(STEEL SUBSTRATE)



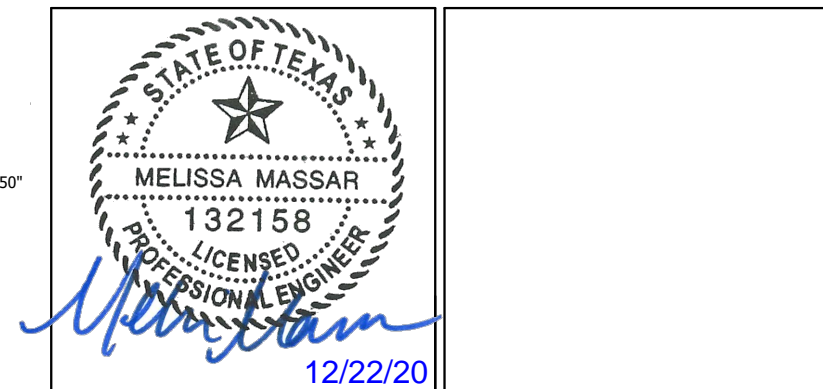
DETAIL H
ASSEMBLY 'A', 'B' & 'C' - JAMB CONNECTION
(CONCRETE SUBSTRATE)



DETAIL J
ASSEMBLY 'A', 'B' & 'C' - JAMB CONNECTION
(CMU SUBSTRATE)



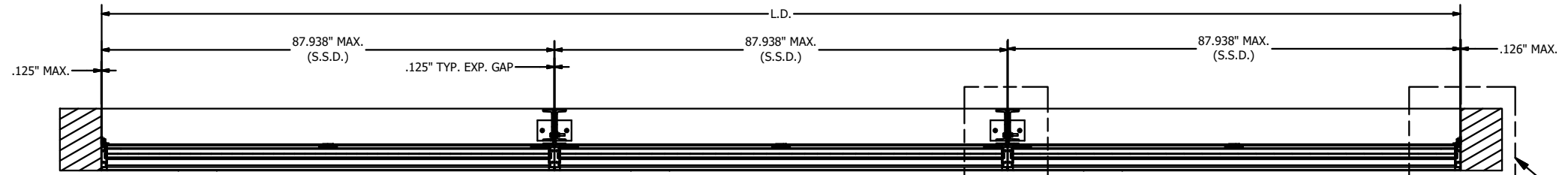
DETAIL K
ASSEMBLY 'A', 'B' & 'C' - JAMB CONNECTION
(UNIVERSAL SLEEVE)



MELISSA M. MASSAR, P.E.
NO. 132158

| | | | | | | |
|----------|--|------------|---------------|---------------|------|----------|
| A | REV'D ENGINEER OF RECORD, UPDATED INFO. | SSK/NS | JDS | WRT | MMM | 09/10/20 |
| REV | DESCRIPTION | BY | CHK | APVD | APVD | DATE |
| AUTHOR | J-W | 10/10/2014 | | | | |
| CHECKED | CGW | 10/10/2014 | | | | |
| APPROVED | CGW | 10/10/2014 | | | | |
| MATERIAL | | | | | | |
| PRODUCT | EM520MD - WIND DRIVEN RAIN RESISTANT LOUVER | | | | | |
| TITLE | ASSEMBLY "A", "B" & "C" - JAMB INSTALL DETAILS | | | | | |
| SIZE | D | DWG NO | 60-022376-00B | | REV | A |
| SCALE | NONE | | INVENTOR | SHEET 3 OF 11 | | |

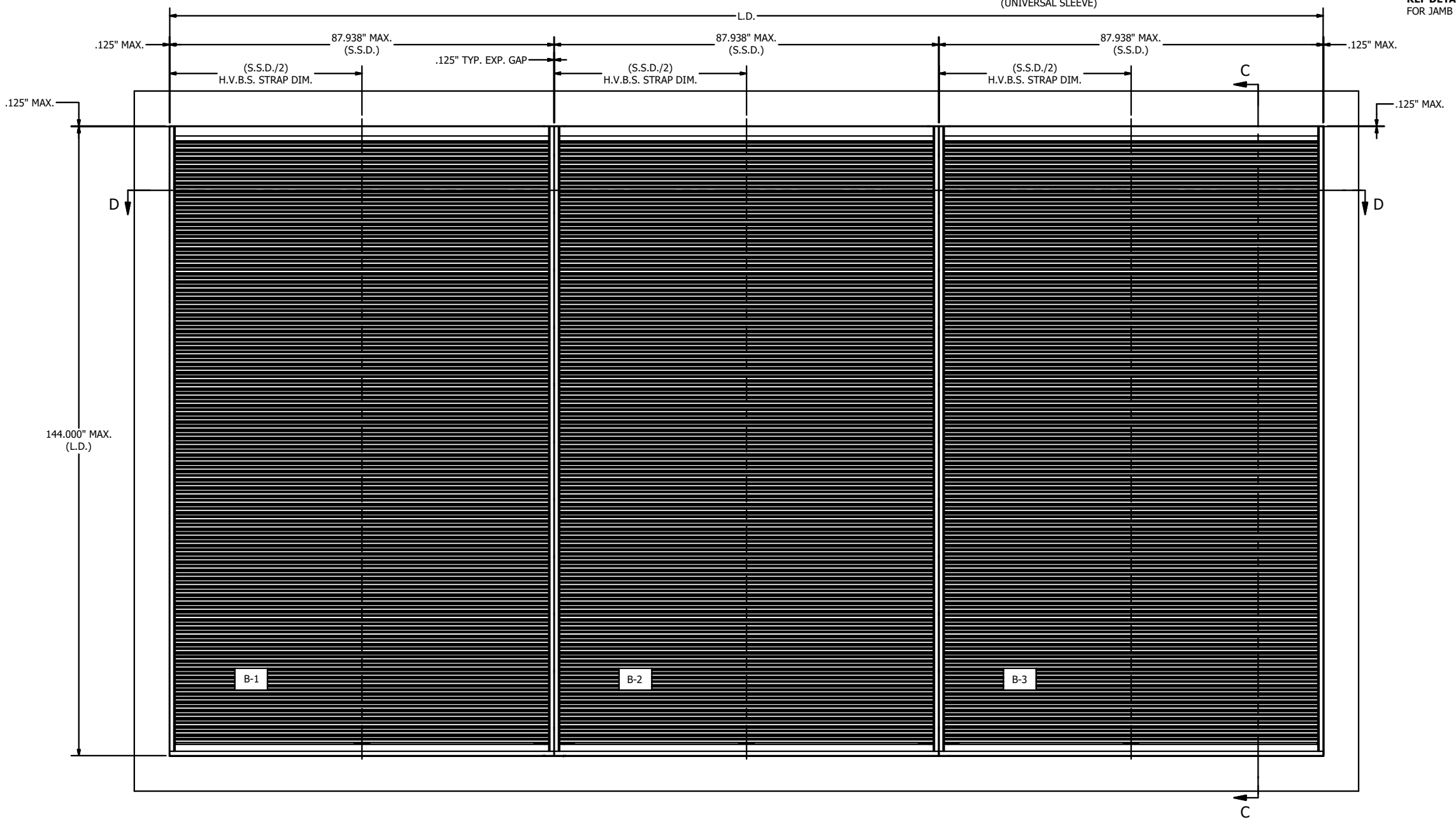
Tolerances
Unless Stated Otherwise
Use WIQ-007, WIQ-008
Fractions ±1/16
Two Decimals ±0.020
Three Decimals ±0.010
Angle Dimensions ±2'



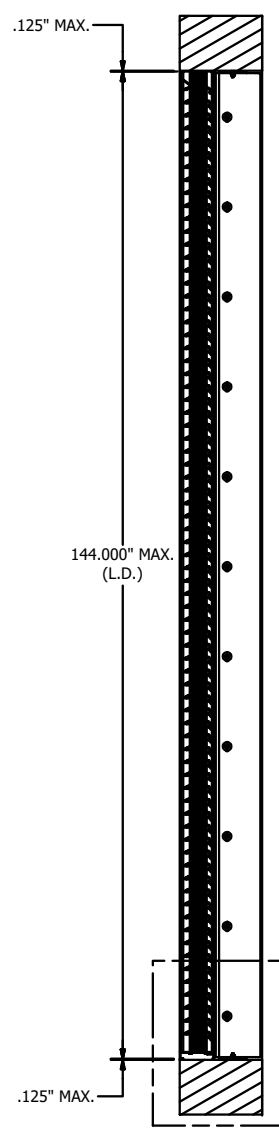
SECTION D-D

REF DETAIL R/07
FOR VISIBLE MULLION SUPPORT CONNECTION
(WOOD/STEEL/CONCRETE)
REF DETAIL S/07, T/07
FOR VISIBLE MULLION SUPPORT CONNECTION (CMU)
REF DETAIL U/07
FOR VISIBLE MULLION SUPPORT BRACKET CONNECTION
(UNIVERSAL SLEEVE)

REF DETAIL F/03
FOR JAMB CONNECTION DETAIL (WOOD)
REF DETAIL G/03
FOR JAMB CONNECTION DETAIL (STEEL)
REF DETAIL H/03
FOR JAMB CONNECTION DETAIL (CONCRETE)
REF DETAIL J/03
FOR JAMB CONNECTION DETAIL (CMU)
REF DETAIL K/03
FOR JAMB CONNECTION DETAIL (UNIVERSAL SLEEVE)



ASSEMBLY "B" - 3X1 MULTI SECTION VIEW
MAX. SHIP SECTION : 87.938" W X 144" H



SECTION C-C

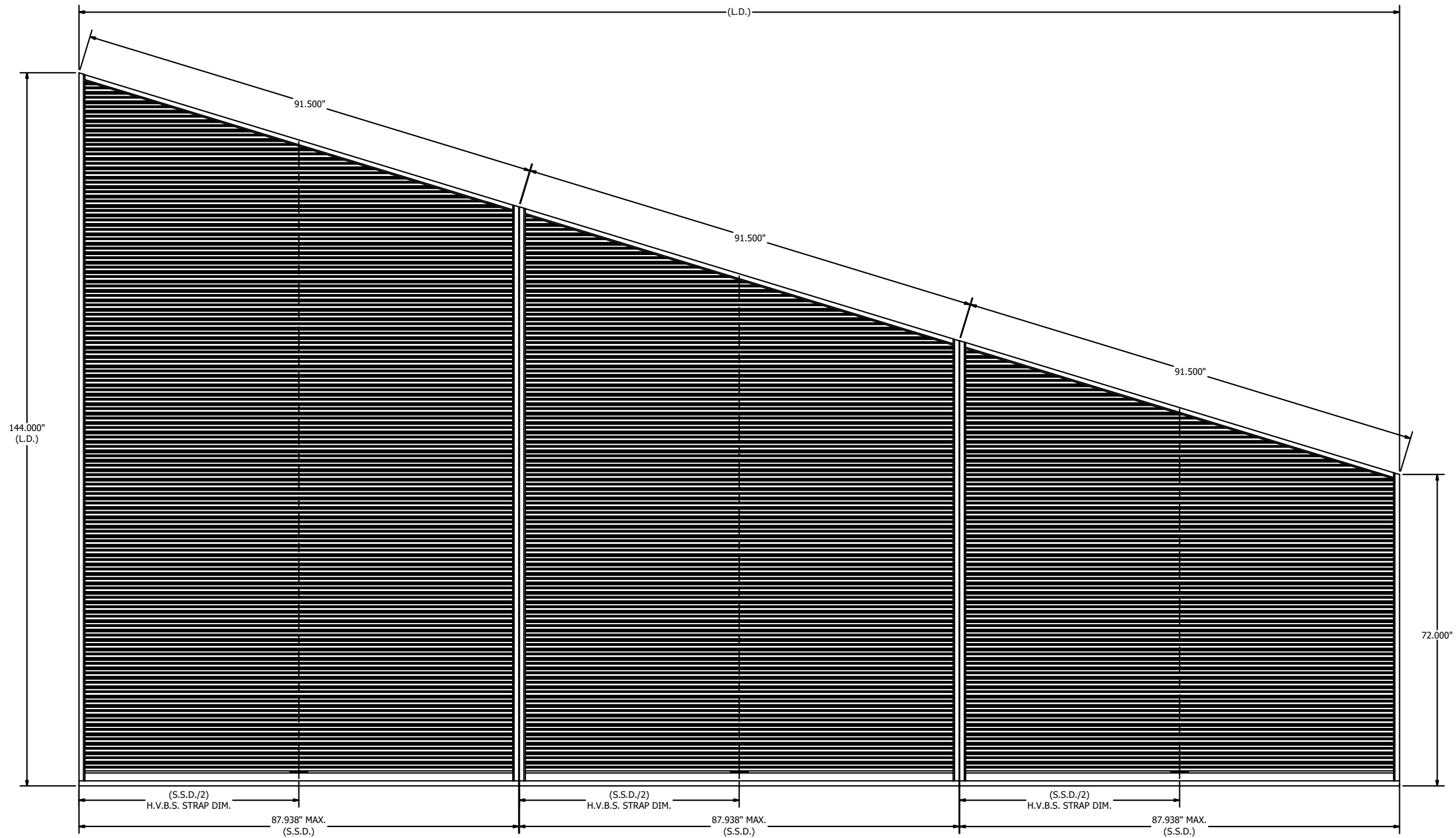
REF DETAIL L/06
FOR MULLION SUPPORT ATTACHMENT
PLATE INSTALLATION DETAIL @ SILL(WOOD)
REF DETAIL M/06
FOR MULLION SUPPORT ATTACHMENT
PLATE INSTALLATION DETAIL @ SILL (STEEL)
REF DETAIL N/06
FOR MULLION SUPPORT ATTACHMENT
PLATE INSTALLATION DETAIL @ SILL (CONCRETE)
REF DETAIL P/06
FOR MULLION SUPPORT ATTACHMENT
PLATE INSTALLATION DETAIL @ SILL (CMU)
REF DETAIL Q/06
FOR MULLION SUPPORT ATTACHMENT
PLATE INSTALLATION DETAIL @ SILL (UNIVERSAL SLEEVE)



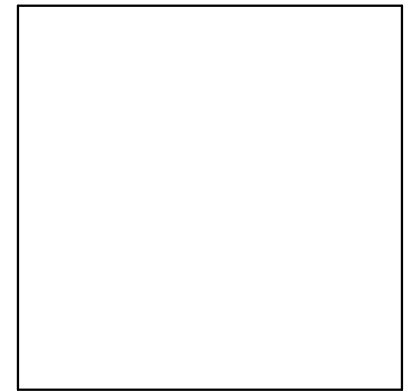
MELISSA M. MASSAR, P.E.
NO. 132158

Tolerances
Unless Stated Otherwise
Use WIQ-007, WIQ-008
Fractions ±1/16
Two Decimals ±0.020
Three Decimals ±0.010
Angle Dimensions ±2'

| | | | | | | |
|----------|--|------------|---------------|------|------|----------|
| A | REV'D ENGINEER OF RECORD, UPDATED INFO. | SSK/NS | JDS | WRT | MMM | 09/10/20 |
| REV | DESCRIPTION | BY | CHK | APVD | APVD | DATE |
| AUTHOR | J-W | 10/10/2014 | | | | |
| CHECKED | CGW | 10/10/2014 | | | | |
| APPROVED | CGW | 10/10/2014 | | | | |
| MATERIAL | | | | | | |
| PRODUCT | EMES20MD - WIND DRIVEN RAIN RESISTANT LOUVER | | | | | |
| TITLE | EMES20MD ASSEMBLY "B" | | | | | |
| SIZE | D | DWG NO | 60-022376-00B | | REV | A |
| SCALE | NONE | INVENTOR | SHEET 4 OF 11 | | | |



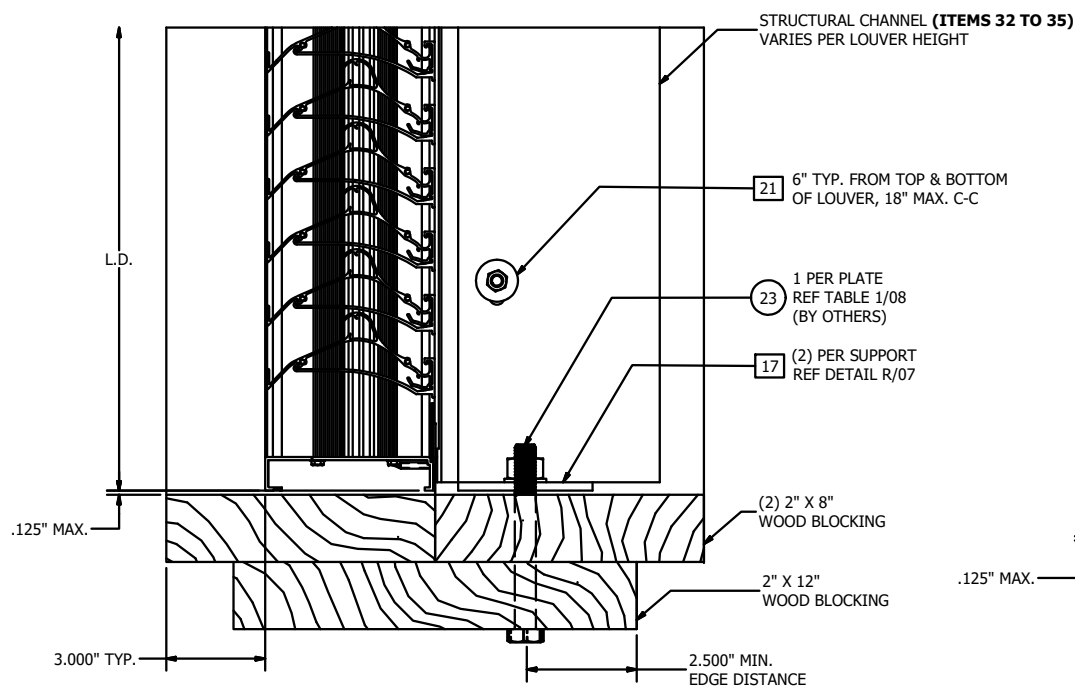
ASSEMBLY "C" - 3X1 MULTI SECTION VIEW
 MAX. SHIP SECTION : 87.938" W X 144" H



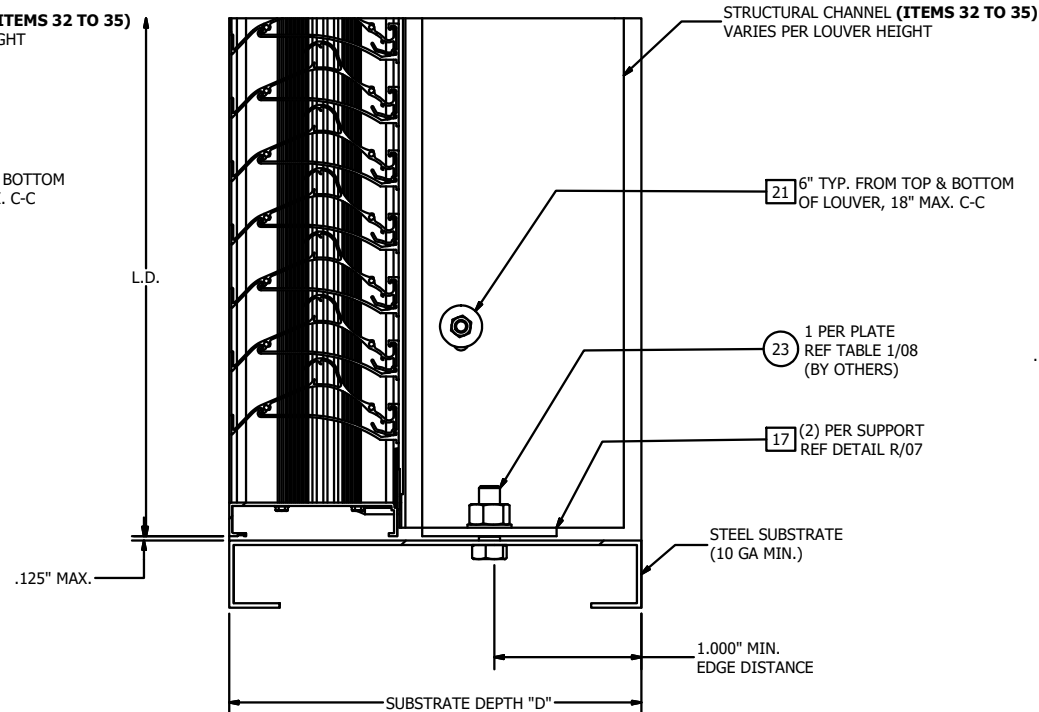
MELISSA M. MASSAR, P.E.
 NO. 132158

Tolerances
 Unless Stated Otherwise
 Use WIQ-007, WIQ-008
 Fractions ±1/16
 Two Decimals ±0.020
 Three Decimals ±0.010
 Angle Dimensions ±2'

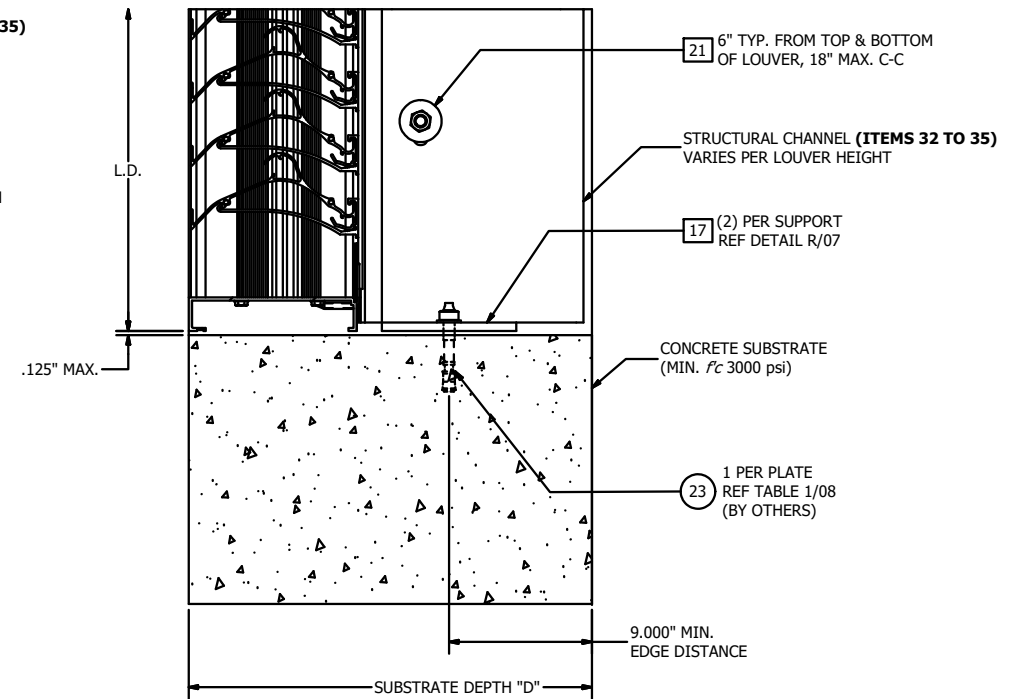
| | | | | | | |
|----------|--|------------|---------------|------|------|----------|
| A | REV'D ENGINEER OF RECORD, UPDATED INFO. | SSK/NS | JDS | WRT | MMM | 09/10/20 |
| REV | DESCRIPTION | BY | CHK | APVD | APVD | DATE |
| AUTHOR | J-W | 10/10/2014 | | | | |
| CHECKED | CGW | 10/10/2014 | | | | |
| APPROVED | CGW | 10/10/2014 | | | | |
| MATERIAL | | | | | | |
| PRODUCT | EMES20MD - WIND DRIVEN RAIN RESISTANT LOUVER | | | | | |
| TITLE | EMES20MD ASSEMBLY "C" | | | | | |
| SIZE | D | DWG NO | 60-022376-00B | REV | A | |
| SCALE | NONE | INVENTOR | SHEET 5 OF 11 | | | |



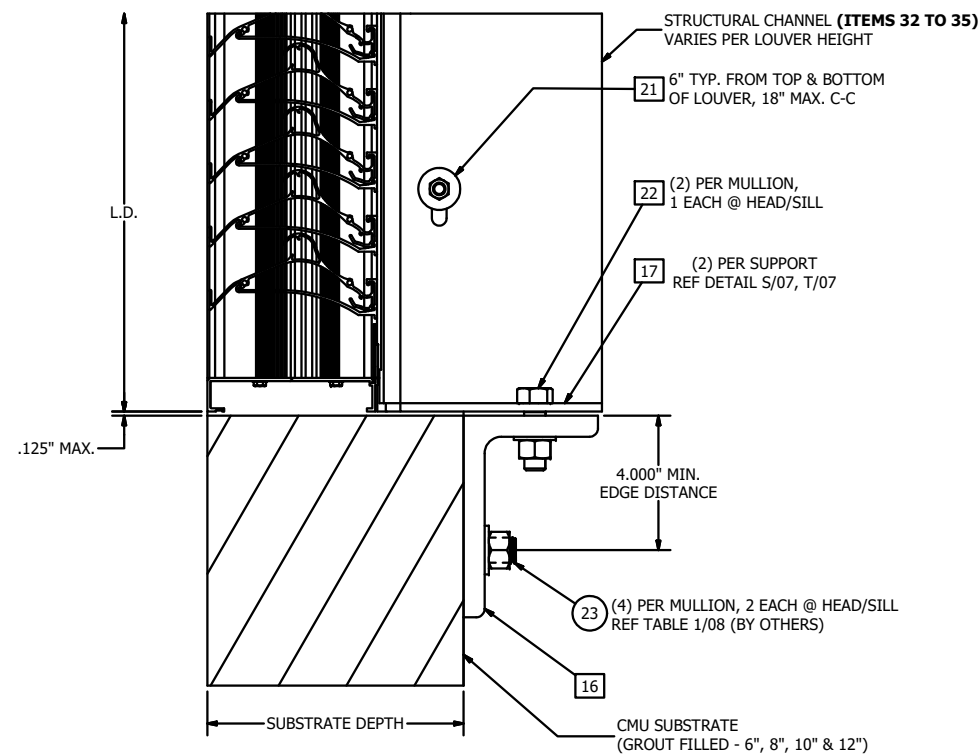
DETAIL L
 ASSEMBLY 'B' & 'C' - MULLION SUPPORT ATTACHMENT PLATE
 INSTALLATION @ HEAD/SILL (WOOD SUBSTRATE ONLY)



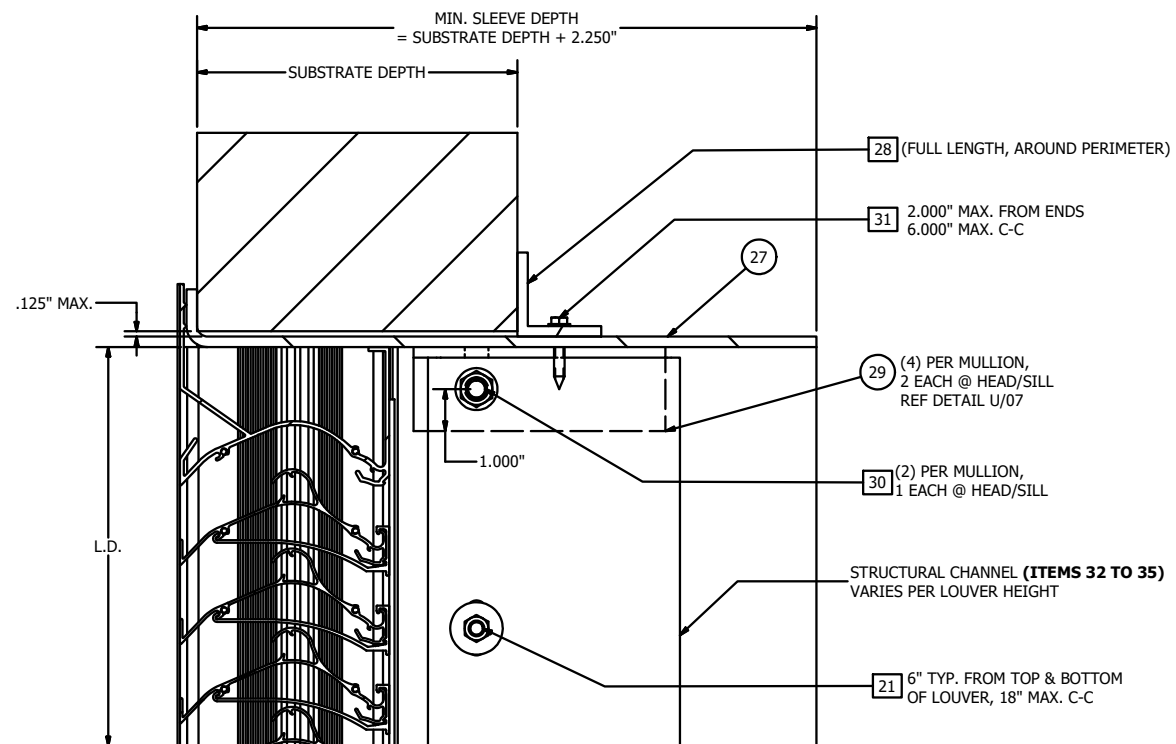
DETAIL M
 ASSEMBLY 'B' & 'C' - MULLION SUPPORT ATTACHMENT PLATE
 INSTALLATION @ HEAD/SILL (STEEL SUBSTRATE ONLY)



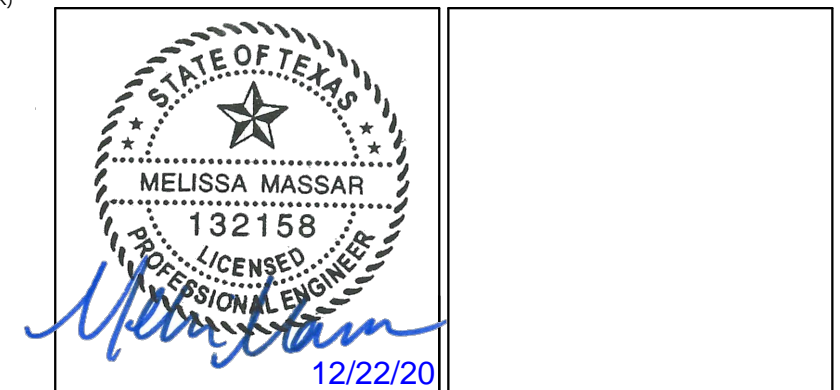
DETAIL N
 ASSEMBLY 'B' & 'C' - MULLION SUPPORT ATTACHMENT PLATE
 INSTALLATION @ HEAD/SILL (CONCRETE SUBSTRATE ONLY)



DETAIL P
 ASSEMBLY 'B' & 'C' - MULLION SUPPORT ATTACHMENT PLATE
 INSTALLATION @ HEAD/SILL (CMU SUBSTRATE ONLY)



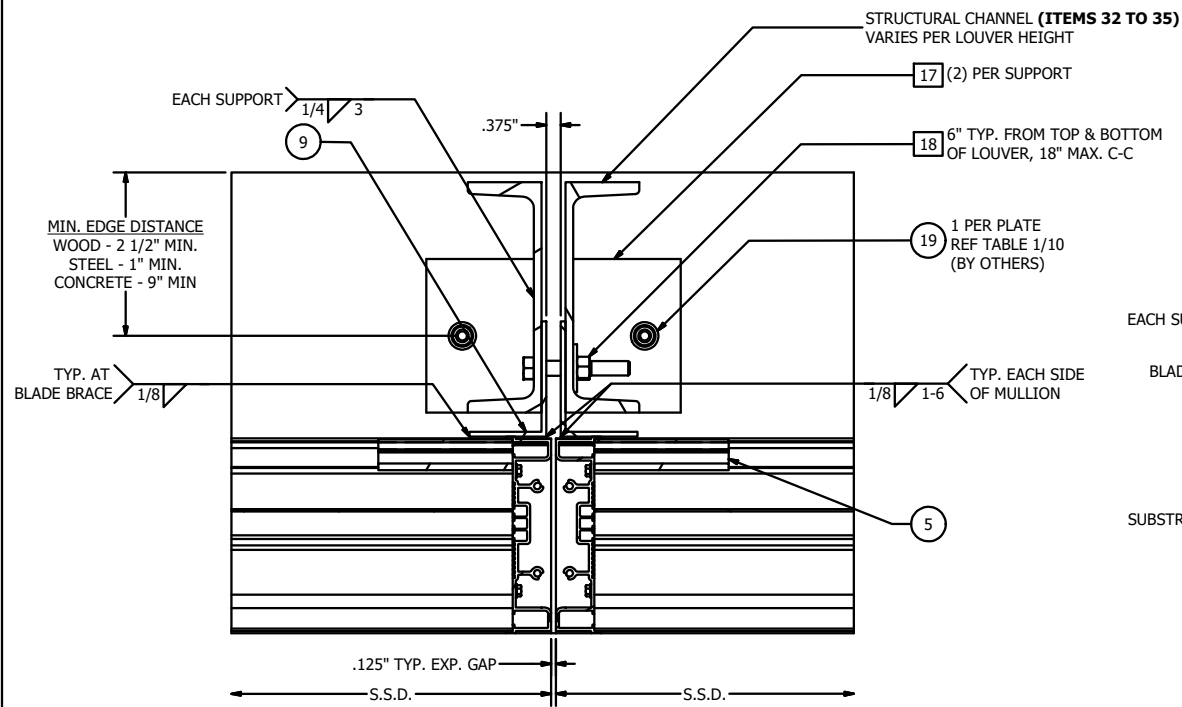
DETAIL Q
 ASSEMBLY 'B' & 'C' - UNIVERSAL SLEEVE CONNECTION DETAIL
 (TYP. @ PERIMETER)



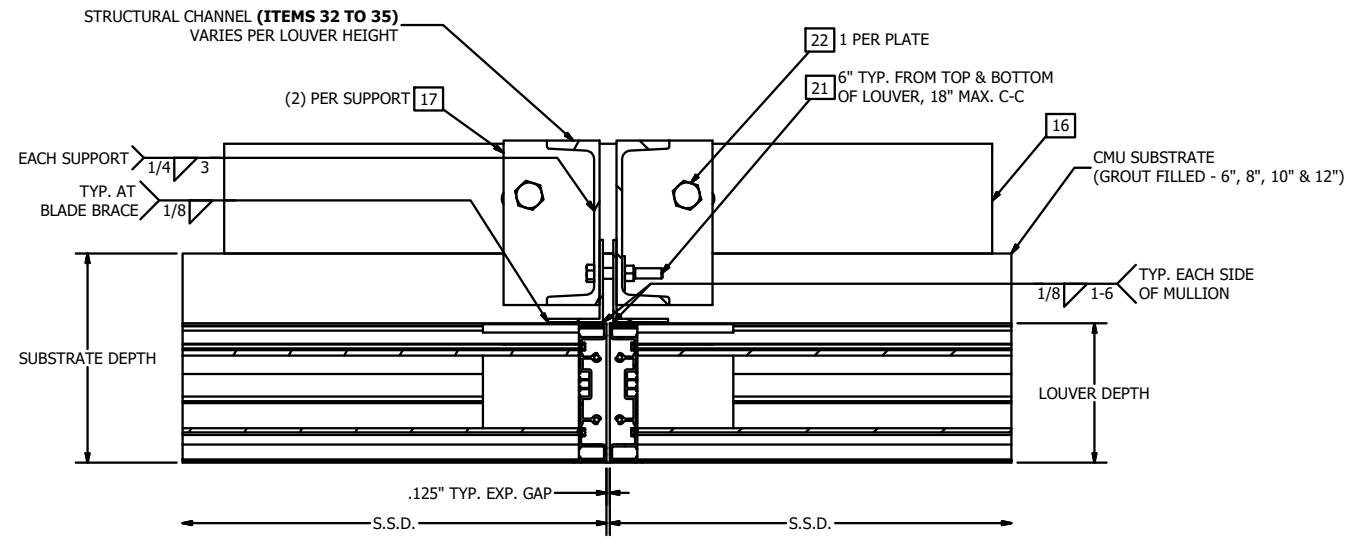
MELISSA M. MASSAR, P.E.
 NO. 132158

| | | | | | | |
|----------|---|------------|---------------|-------|---------|----------|
| A | REV'D ENGINEER OF RECORD, UPDATED INFO. | SSK/NS | JDS | WRT | MMM | 09/10/20 |
| REV | DESCRIPTION | BY | CHK | APVD | APVD | DATE |
| AUTHOR | J-W | 10/10/2014 | | | | |
| CHECKED | CGW | 10/10/2014 | | | | |
| APPROVED | CGW | 10/10/2014 | | | | |
| MATERIAL | | | | | | |
| PRODUCT | EMES20MD - WIND DRIVEN RAIN RESISTANT LOUVER | | | | | |
| TITLE | ASSEMBLY 'B' & 'C' - MULLION SUPPORT CONNECTION @ HEAD/SILL DETAILS | | | | | |
| SIZE | | DWG NO | 60-022376-00B | REV | A | |
| D | | | | | | |
| SCALE | NONE | INVENTOR | | SHEET | 6 OF 11 | |

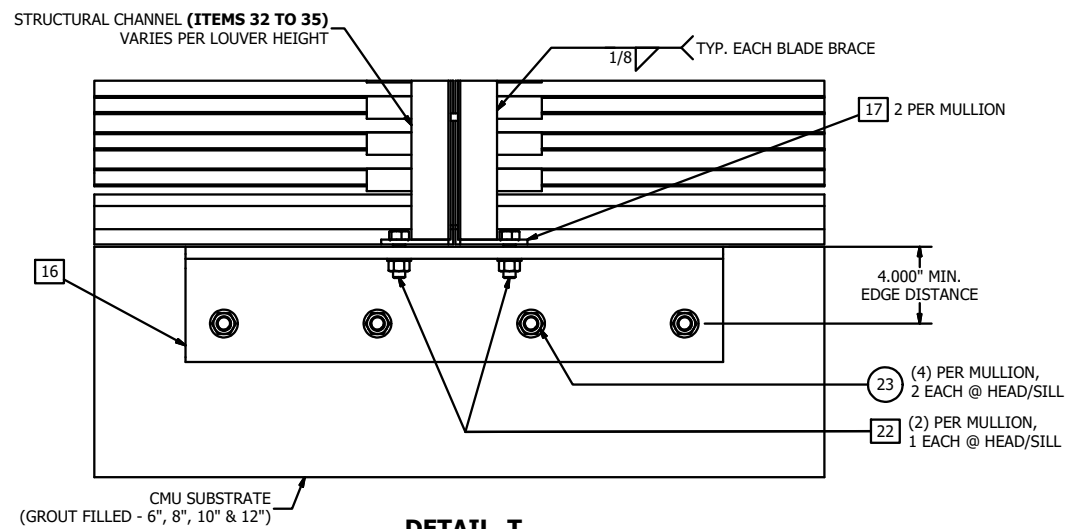
Tolerances
 Unless Stated Otherwise
 Use WIQ-007, WIQ-008
 Fractions ±1/16
 Two Decimals ±0.020
 Three Decimals ±0.010
 Angle Dimensions ±2'



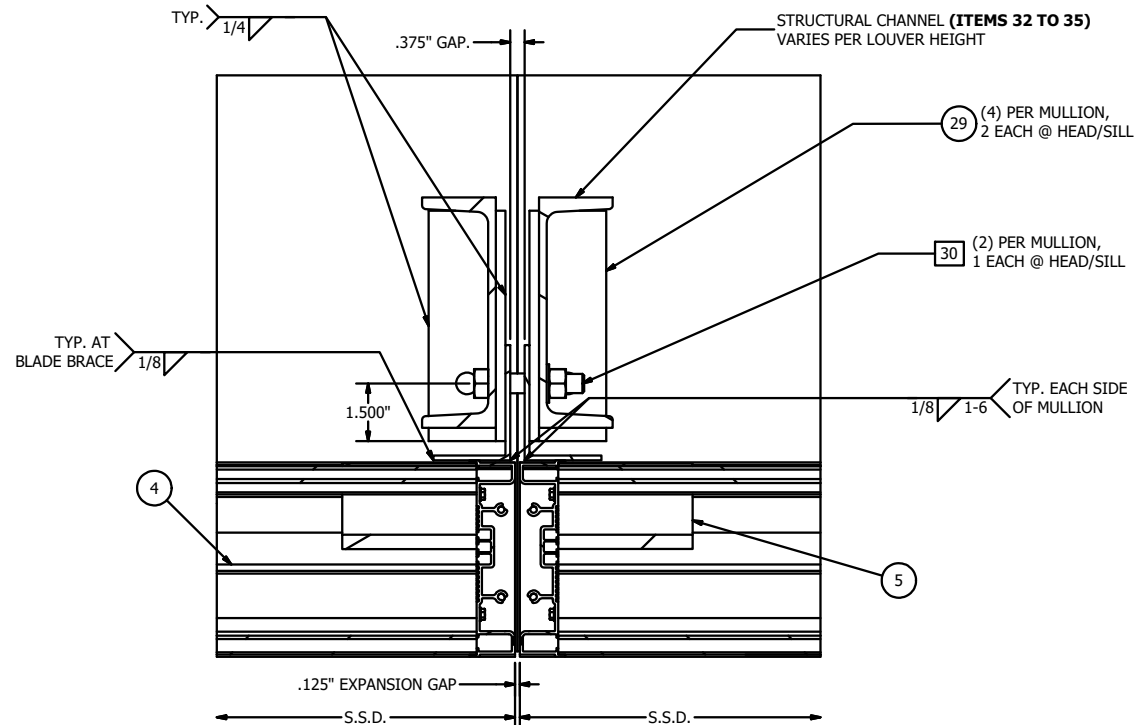
DETAIL R
ASSEMBLY 'B' & 'C' - VISIBLE MULLION SUPPORT CONNECTION DETAIL
(WOOD, METAL, CONCRETE SUBSTRATE ONLY)



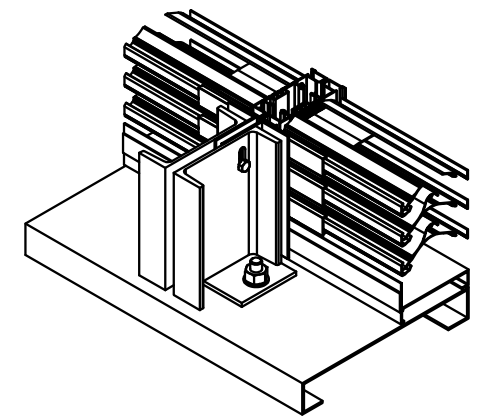
DETAIL S
ASSEMBLY 'B' & 'C' - VISIBLE MULLION SUPPORT CONNECTION DETAIL
(CMU SUBSTRATE ONLY)



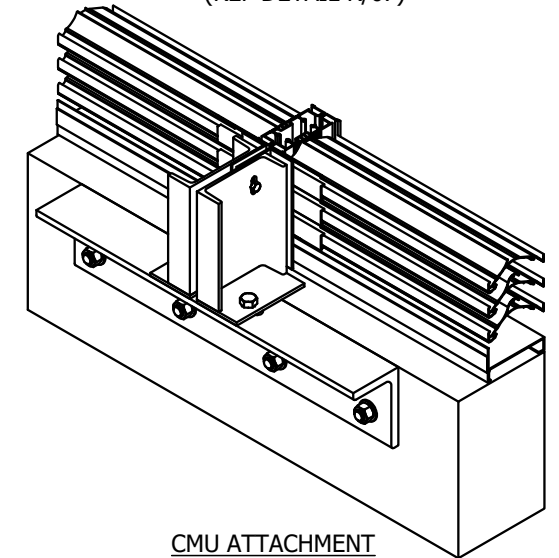
DETAIL T
ASSEMBLY 'B' & 'C' - VISIBLE MULLION SUPPORT CONNECTION DETAIL
(CMU SUBSTRATE ONLY)



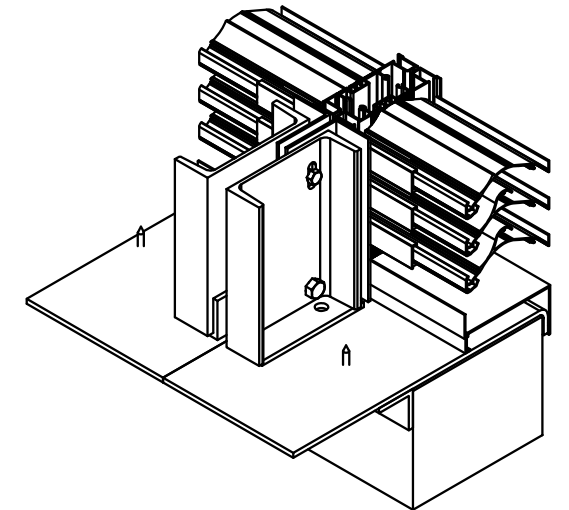
DETAIL U
ASSEMBLY 'B' & 'C' - VISIBLE MULLION SUPPORT BRACKET ATTACHMENT DETAIL
(UNIVERSAL SLEEVE ONLY)



STEEL (SHOWN) ATTACHMENT
(WOOD, CONCRETE SIM.)
(REF DETAIL R/07)



CMU ATTACHMENT
(REF DETAIL S/07)



UNIVERSAL SLEEVE ATTACHMENT
(REF DETAIL U/07)

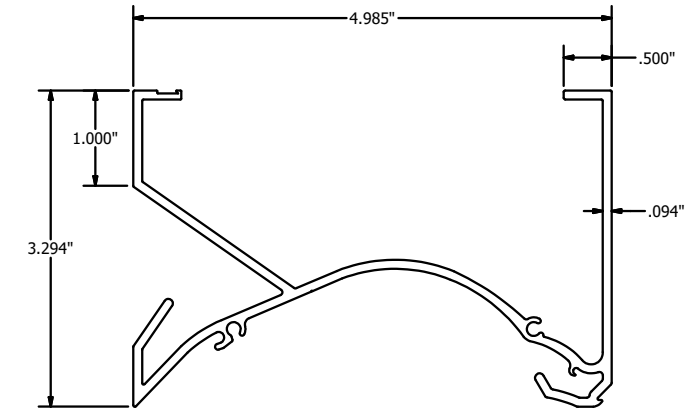
MELISSA M. MASSAR, P.E.
NO. 132158

Tolerances
Unless Stated Otherwise
Use WIQ-007, WIQ-008
Fractions ±1/16
Two Decimals ±0.020
Three Decimals ±0.010
Angle Dimensions ±2'

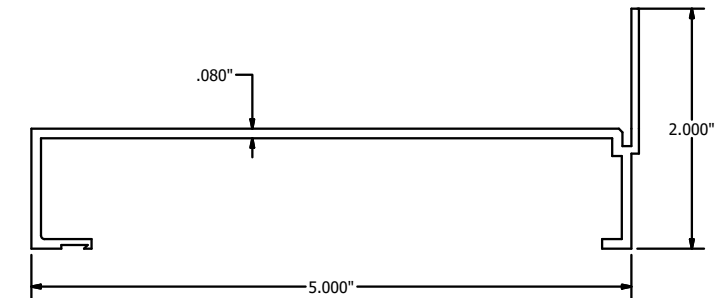
| | | | | | | |
|----------|---|------------|---------------|------|------|----------|
| A | REV'D ENGINEER OF RECORD, UPDATED INFO. | SSK/NS | JDS | WRT | MMM | 09/10/20 |
| REV | DESCRIPTION | BY | CHK | APVD | APVD | DATE |
| AUTHOR | J-W | 10/10/2014 | | | | |
| CHECKED | CGW | 10/10/2014 | | | | |
| APPROVED | CGW | 10/10/2014 | | | | |
| MATERIAL | | | | | | |
| PRODUCT | EMES20MD - WIND DRIVEN RAIN RESISTANT LOUVER | | | | | |
| TITLE | ASSEMBLY "B" & "C" - VISIBLE MULLION SUPPORT CONNECTION DETAILS | | | | | |
| SIZE | | DWG NO | 60-022376-00B | | | |
| D | | | | | | REV A |
| SCALE | NONE | INVENTOR | SHEET 7 OF 11 | | | |

TABLE 01 - EME520MD - WALL FASTENER TABLE (N.I.C.)

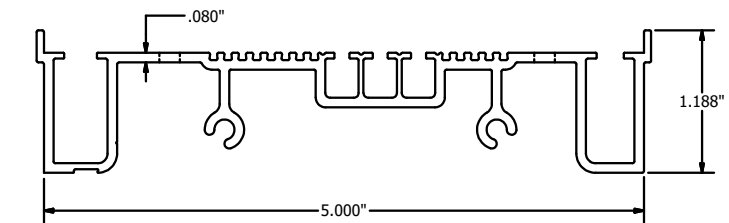
| SUBSTRATE TYPE | MIN. SUBSTRATE REQUIREMENTS | LOCATION | FASTENER TYPE | MIN. EMBEDMENT | MIN. EDGE DISTANCE |
|--------------------------------------|--|-----------------------------|--|----------------|--------------------|
| WOOD | SPECIFIC GRAVITY = 0.4 | HEAD/SILL | 3/8-16 GRADE 2 HEX HEAD BOLT W LOCKNUT AND WASHER (UNDER BOLT HEAD & LOCKNUT) | NA | 1 1/2" |
| | | JAMBS | 3/8-16 GRADE 2 HEX HEAD BOLT W LOCKNUT AND WASHER (UNDER BOLT HEAD & LOCKNUT) | NA | 1 1/2" |
| | | MULLION SUPPORT (END PLATE) | 5/8-11 A307 HEX HEAD BOLT W NUT AND WASHER | NA | 2 1/2" |
| STEEL | STEEL - MIN. 10 GA | HEAD/SILL | 3/8-16 GRADE 2 HEX HEAD BOLT W LOCKNUT AND WASHER | NA | 1" |
| | | JAMBS | 3/8-16 GRADE 2 HEX HEAD BOLT W LOCKNUT AND WASHER | NA | 1" |
| | | MULLION SUPPORT (END PLATE) | 5/8-11 A307 HEX HEAD BOLT W NUT AND WASHER | NA | 1" |
| CONCRETE | 3000 PSI MIN. COMP. STRENGTH | HEAD/SILL | 3/8" Ø HILTI KWIK BOLT TZ EXPANSION ANCHORS | 2" | 4" |
| | | JAMBS | 3/8" Ø HILTI KWIK BOLT TZ EXPANSION ANCHORS | 2" | 4" |
| | | MULLION SUPPORT (END PLATE) | 5/8" Ø HILTI KWIK BOLT TZ EXPANSION ANCHORS | 4" | 9" |
| GROUT FILLED CMU (6", 8", 10" & 12") | ASTM C-90 BLOCK, 1500 PSI GROUT COMP. STRENGTH | HEAD/SILL | 1/4" Ø HILTI KWIK BOLT III EXPANSION ANCHOR (1 PER CELL, 1 3/8" MIN. FROM VERTICAL MORTAR JOINT) | 2" | 4" |
| | | JAMBS | 5/8" Ø HILTI KWIK BOLT III EXPANSION ANCHORS (1 PER CELL) | 4" | 4" |
| | | MULLION SUPPORT (END PLATE) | 3/4" Ø HILTI HIT-HY 270 ANCHOR (1 PER CELL, 1" MIN. FROM VERTICAL MORTAR JOINT) | 4 1/4" | 4" |



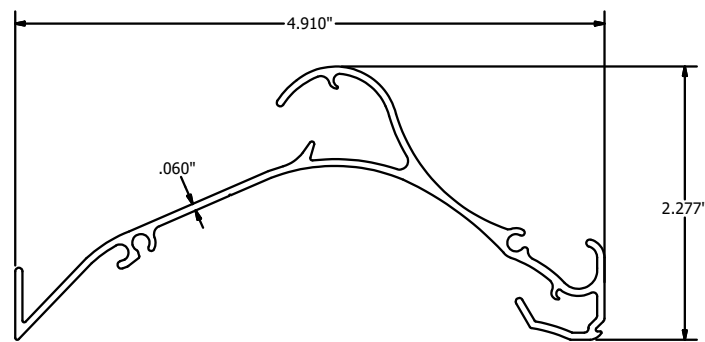
HEAD FRAME ITEM #01
RUSKIN #70-022497-00B



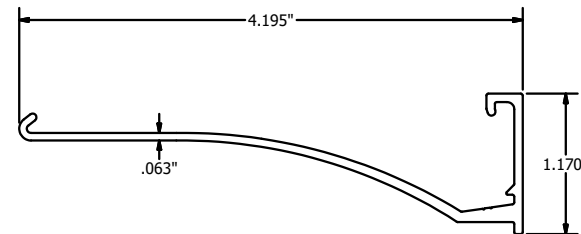
SILL FRAME ITEM #02
RUSKIN #70-022498-00B



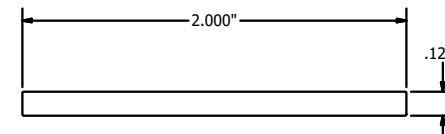
JAMB FRAME ITEM #03
RUSKIN #70-022508-00B



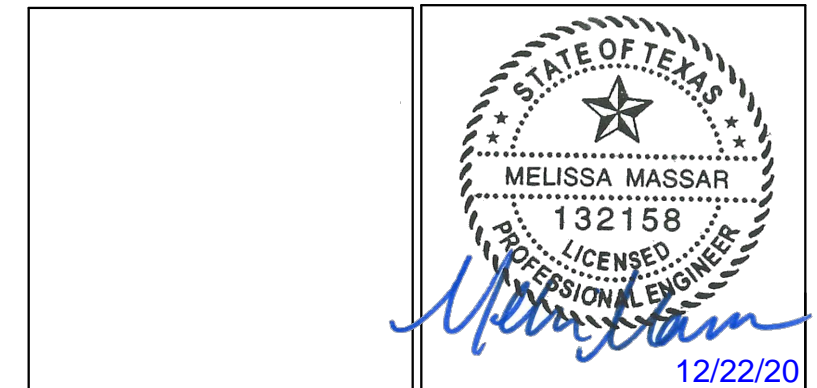
BLADE ITEM #04
RUSKIN #70-022496-00B



BLADE BRACE ITEM #05
RUSKIN #70-023870-00B



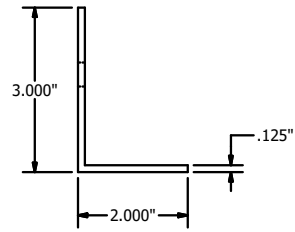
H.V.B.S STRAP ITEM #06
RUSKIN #85-021658-00B



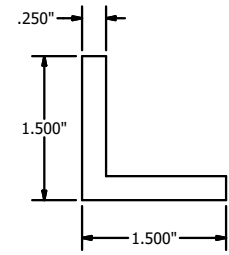
MELISSA M. MASSAR, P.E.
NO. 132158

| | | | | | | |
|----------|--|------------|---------------|---------------|------|----------|
| A | REV'D ENGINEER OF RECORD, UPDATED INFO. | SSK/NS | JDS | WRT | MMM | 09/10/20 |
| REV | DESCRIPTION | BY | CHK | APVD | APVD | DATE |
| AUTHOR | J-W | 10/10/2014 | | | | |
| CHECKED | CGW | 10/10/2014 | | | | |
| APPROVED | CGW | 10/10/2014 | | | | |
| MATERIAL | EMES20MD - WIND DRIVEN RAIN RESISTANT LOUVER | | | | | |
| TITLE | SUBSTRATE WALL FASTENER TABLE | | | | | |
| | EMES20MD PARTS | | | | | |
| SIZE | D | DWG NO | 60-022376-00B | REV | A | |
| SCALE | NONE | INVENTOR | | SHEET 8 OF 11 | | |

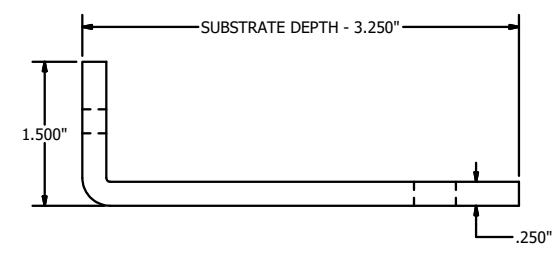
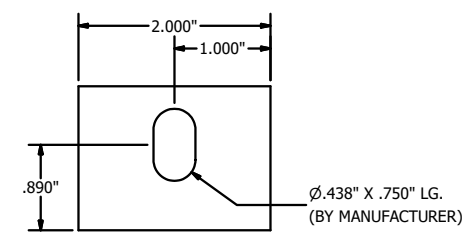
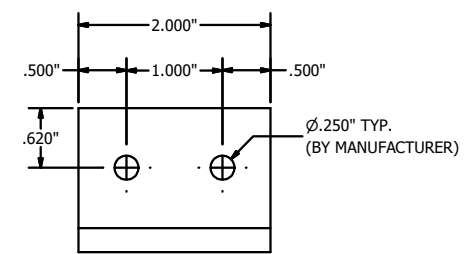
Tolerances
Unless Stated Otherwise
Use WIG-007, WIG-008
Fractions ±1/16
Two Decimals ±0.020
Three Decimals ±0.010
Angle Dimensions ±2'



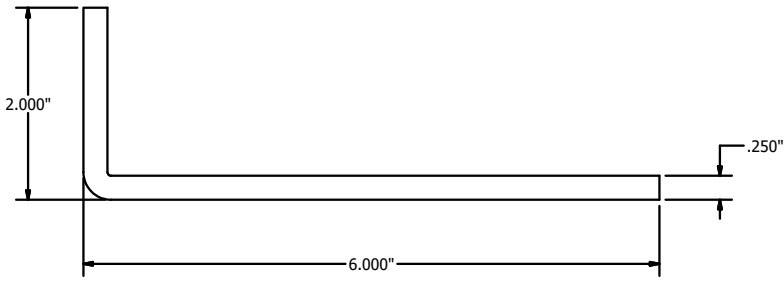
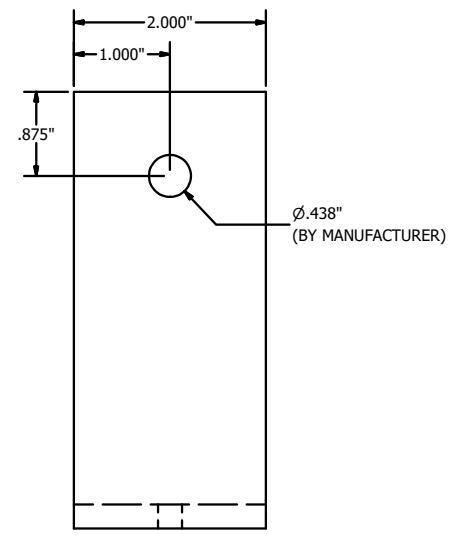
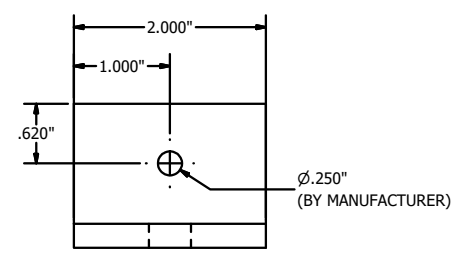
MULLION SUPPORT ANGLE ITEM#09
RUSKIN #A1139



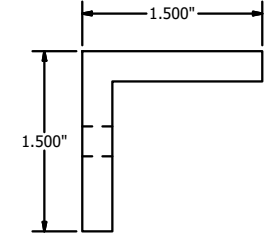
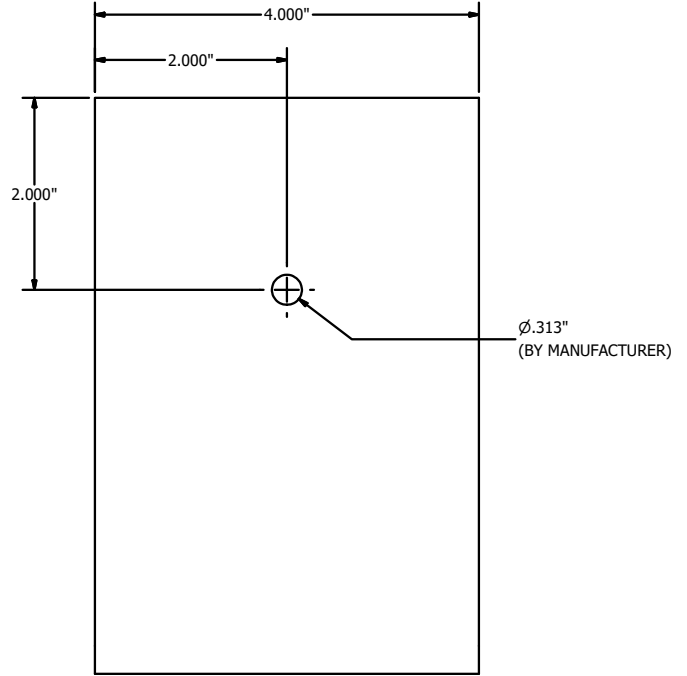
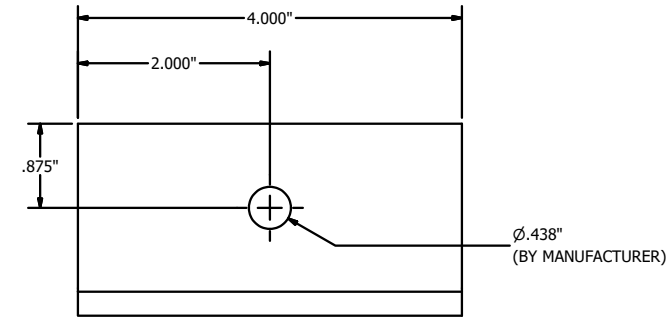
ATTACHMENT CLIP ANGLE, 2" LG. ITEM#10
RUSKIN #85-021637-00B



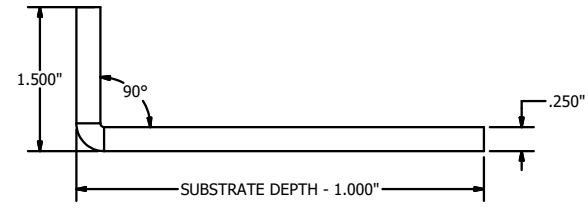
CLIP ANGLE - FORMED, 2" LG. ITEM#11
RUSKIN #N/A



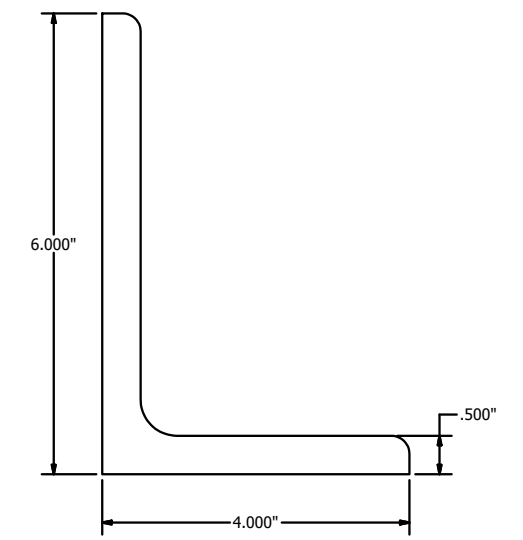
CLIP ANGLE - FORMED, 4" LG. ITEM#12
RUSKIN #N/A



ATTACHMENT ANGLE, CONT. ITEM #13
RUSKIN #85-023099-00B



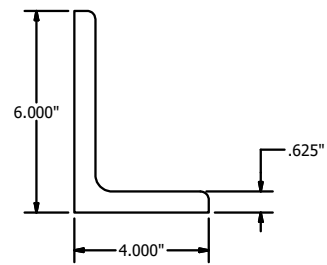
CLIP ANGLE - FORMED, CONT. ITEM #14
RUSKIN #85-023100-00B



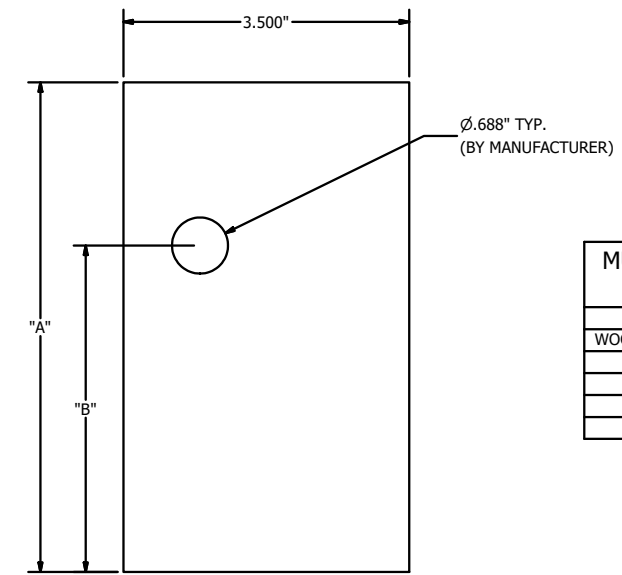
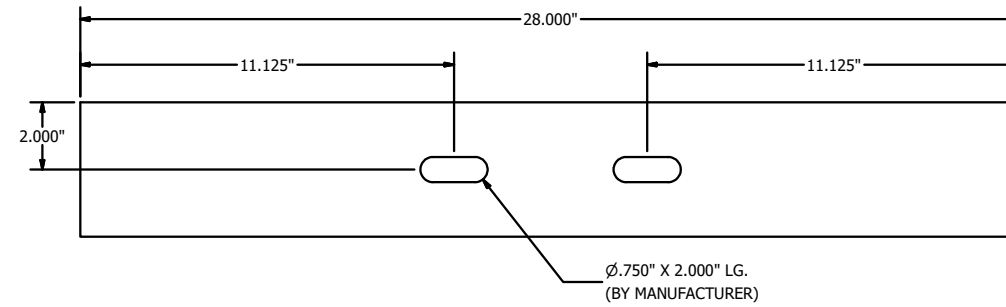
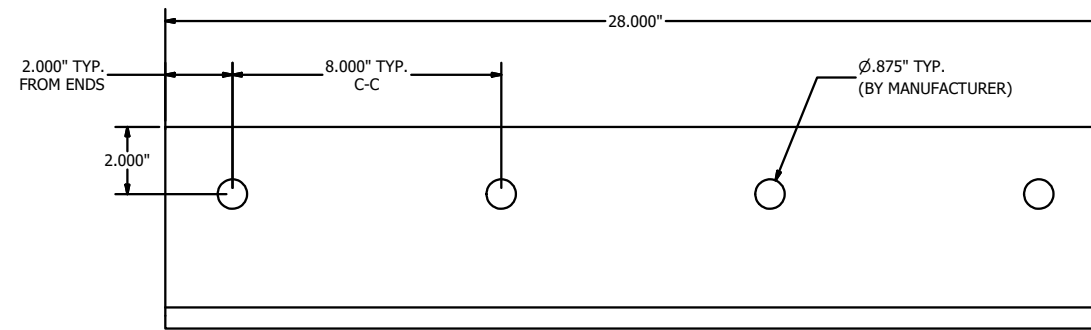
STRUCTURAL ATTACHMENT ANGLE, CONT. ITEM #15
RUSKIN #85-023122-00B

Tolerances
Unless Stated Otherwise
Use WIQ-007, WIQ-008
Fractions ±1/16
Two Decimals ±0.020
Three Decimals ±0.010
Angle Dimensions ±z

| | | | | | | |
|----------|---|------------|---|------|---------------|----------|
| REV | DESCRIPTION | BY | CHK | APVD | APVD | DATE |
| A | REV'D ENGINEER OF RECORD, UPDATED INFO. | SSK/NS | JDS | WRT | MMM | 09/10/20 |
| AUTHOR | J-W | 10/10/2014 | | | | |
| CHECKED | CGW | 10/10/2014 | <small>3900 Doctor Greaves Road, Grandview, MO 64030 PROPRIETARY AND CONFIDENTIAL</small> | | | |
| APPROVED | CGW | 10/10/2014 | <small>EMES20MD - WIND DRIVEN RAIN RESISTANT LOUVER</small> | | | |
| MATERIAL | EMES20MD - PARTS | | | | | |
| TITLE | EMES20MD - PARTS | | | | | |
| SIZE | DWG NO | | | | REV | |
| D | 60-022376-00B | | | | A | |
| SCALE | NONE | | INVENTOR | | SHEET 9 OF 11 | |

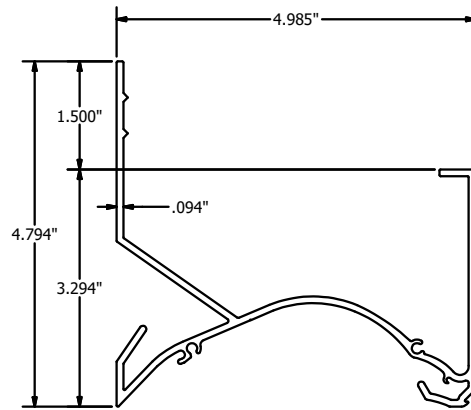


STRUCTURAL ATTACHMENT ANGLE, 28" LG. ITEM #16
RUSKIN #85-023102-00B

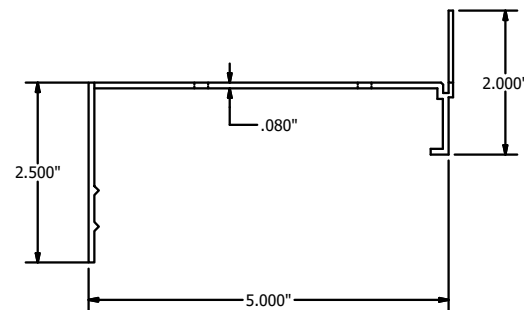


| MULLION SUPPORT ATTACHMENT PLATE DIMENSION TABLE | | |
|--|--------|-------|
| WALL TYPE | "A" | "B" |
| WOOD/STEEL/CONCRETE | 3.500 | 1.750 |
| 6" CMU | 4.000 | 2.000 |
| 8" CMU | 6.000 | 4.000 |
| 10" CMU | 8.000 | 6.000 |
| 12" CMU | 10.000 | 8.000 |

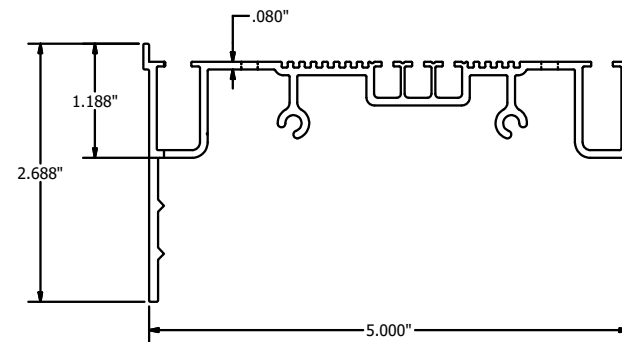
MULLION SUPPORT ATTACHMENT PLATE ITEM #17
RUSKIN #85-023103-00B



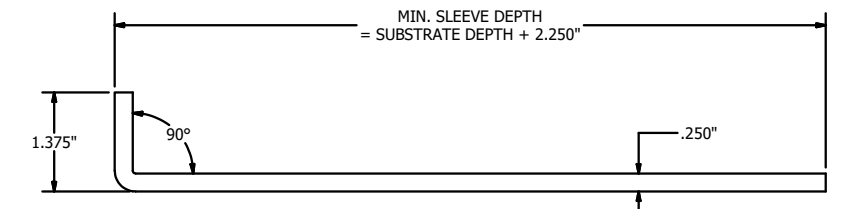
HEAD FRAME W/INTEGRAL FLANGE ITEM #24
RUSKIN #70-022499-00B



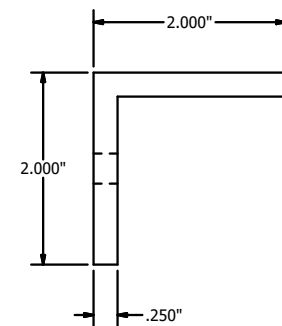
SILL FRAME W/INTEGRAL FLANGE ITEM #25
RUSKIN #70-020969-00B



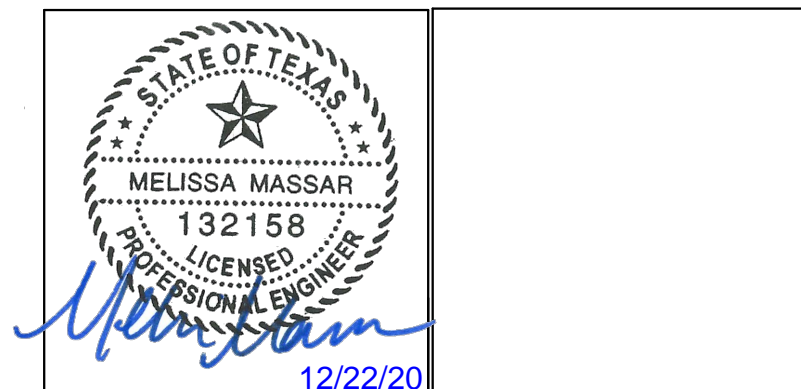
JAMB FRAME W/INTEGRAL FLANGE ITEM #26
RUSKIN #70-022509-00B



FRONT FLANGE UNIVERSAL SLEEVE ITEM #27



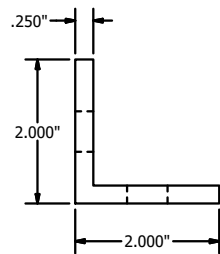
CONT. RETAINING ANGLE ITEM #28
RUSKIN #85-023107-00B



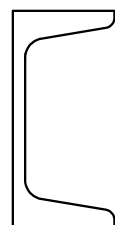
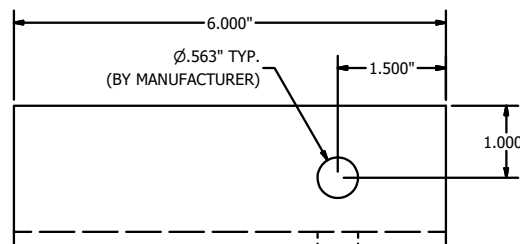
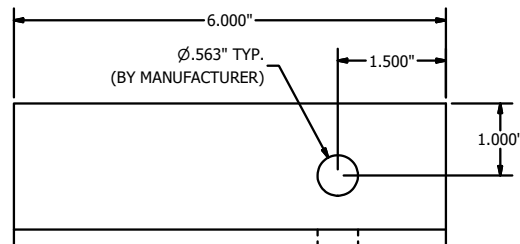
MELISSA M. MASSAR, P.E.
NO. 132158

Tolerances
Unless Stated Otherwise
Use WIQ-007, WIQ-008
Fractions ±1/16
Two Decimals ±0.020
Three Decimals ±0.010
Angle Dimensions ±z

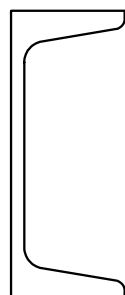
| | | | | | | |
|----------|--|------------|---------------|----------------|------|----------|
| A | REV'D ENGINEER OF RECORD, UPDATED INFO. | SSK/NS | JDS | WRT | MMM | 09/10/20 |
| REV | DESCRIPTION | BY | CHK | APVD | APVD | DATE |
| AUTHOR | J-W | 10/10/2014 | | | | |
| CHECKED | CGW | 10/10/2014 | | | | |
| APPROVED | CGW | 10/10/2014 | | | | |
| MATERIAL | | | | | | |
| TITLE | EMES20MD - WIND DRIVEN RAIN RESISTANT LOUVER | | | | | |
| | EMES20MD - PARTS | | | | | |
| SIZE | D | DWG NO | 60-022376-00B | REV | A | |
| SCALE | NONE | INVENTOR | | SHEET 10 OF 11 | | |



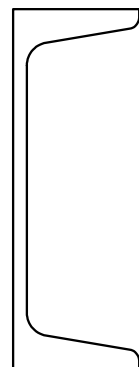
UNIVERSAL SLEEVE - MULLION SUPPORT ATTACHMENT ANGLE ITEM #29
 RUSKIN #85-023108-00B



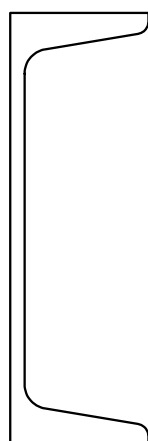
C3X4.1 ITEM #32



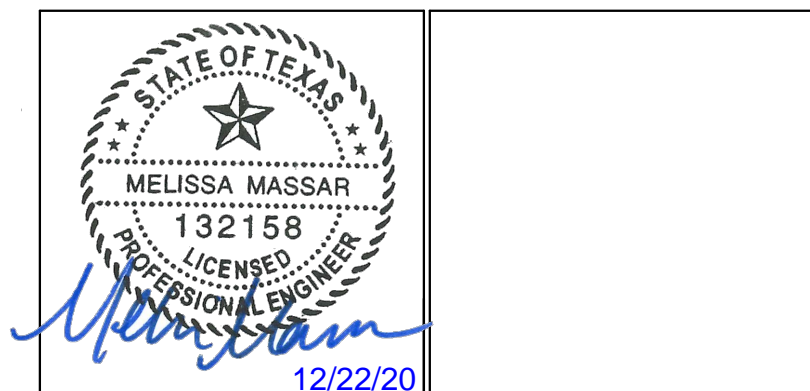
C4X5.4 ITEM #33



C5X6.7 ITEM #34



C6X8.7 ITEM #35



MELISSA M. MASSAR, P.E.
 NO. 132158

Tolerances
 Unless Stated Otherwise
 Use WIG-007, WIG-008
 Fractions ±1/16
 Two Decimals ±0.020
 Three Decimals ±0.010
 Angle Dimensions ±2'

| | | | | | | |
|----------|--|------------|---------------|----------------|------|----------|
| A | REV'D ENGINEER OF RECORD, UPDATED INFO. | SSK/NS | JDS | WRT | MMM | 09/10/20 |
| REV | DESCRIPTION | BY | CHK | APVD | APVD | DATE |
| AUTHOR | J-W | 10/10/2014 | | | | |
| CHECKED | CGW | 10/10/2014 | | | | |
| APPROVED | CGW | 10/10/2014 | | | | |
| MATERIAL | | | | | | |
| PRODUCT | EMES20MD - WIND DRIVEN RAIN RESISTANT LOUVER | | | | | |
| TITLE | EMES20MD - PARTS | | | | | |
| SIZE | D | DWG NO | 60-022376-00B | REV | A | |
| SCALE | NONE | INVENTOR | | SHEET 11 OF 11 | | |