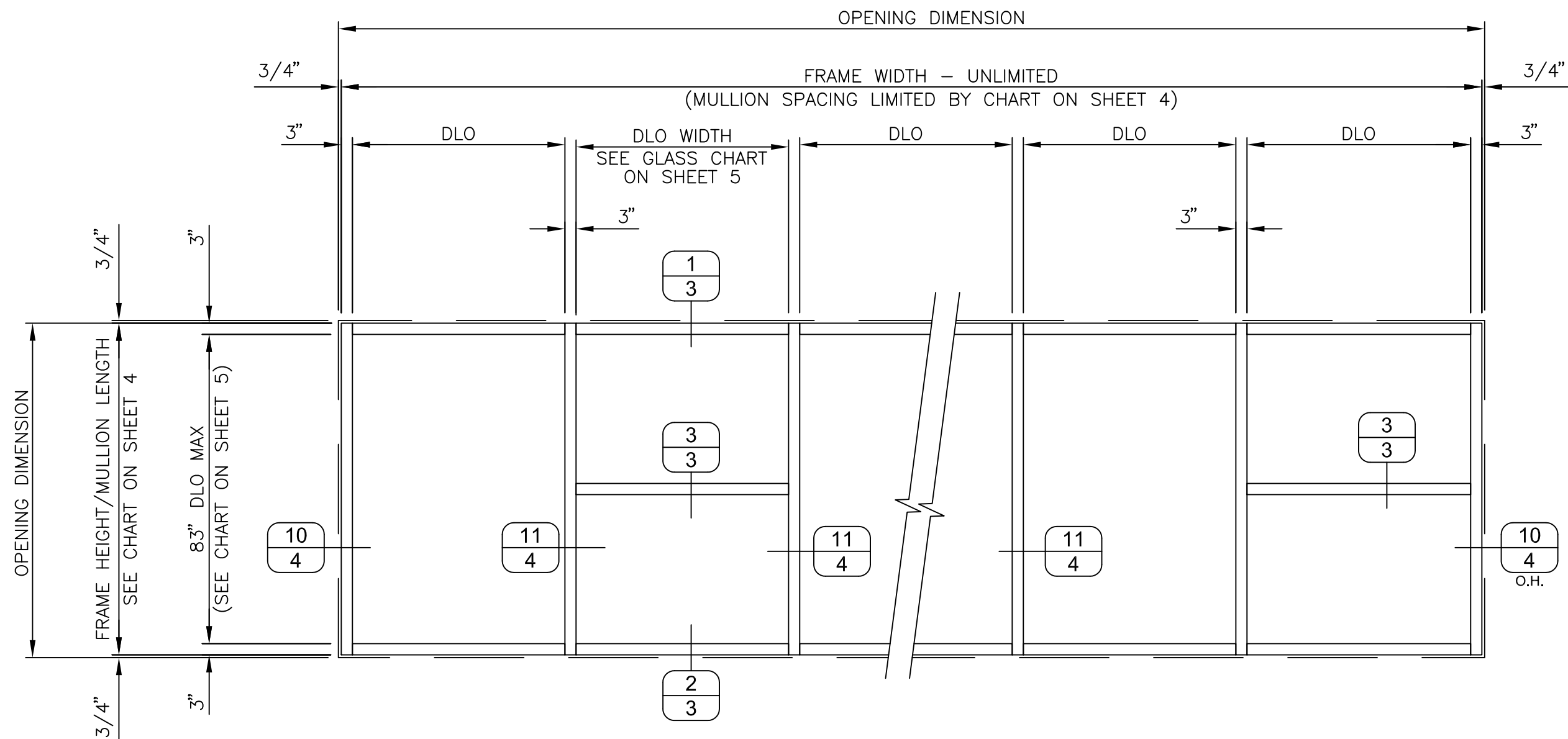


ELEVATION



**EXTERIOR VIEW
(NOT TO SCALE)**

DESIGN PRESSURE
+100 / -123 Psf

REV.#	DESCRIPTION	DATE
1		7/26/21
2		
3		
4		
5		
6		
7		

KAWNEER
AN ARCONIC COMPANY
PH: (770) 449-5555
WWW.KAWNEER.COM

555 GUTHRIDGE COURT
NORCROSS, GA 30092



9/10/2021
LUCAS TURNER
TX PE 115094
TURNER ENGINEERING & CONSULTING, INC.,
TBPE REG. #18075
2428 OLD NATCHEZ TRACE TRL.
CAMDEN, TN, 38320
PH 941-380-1574

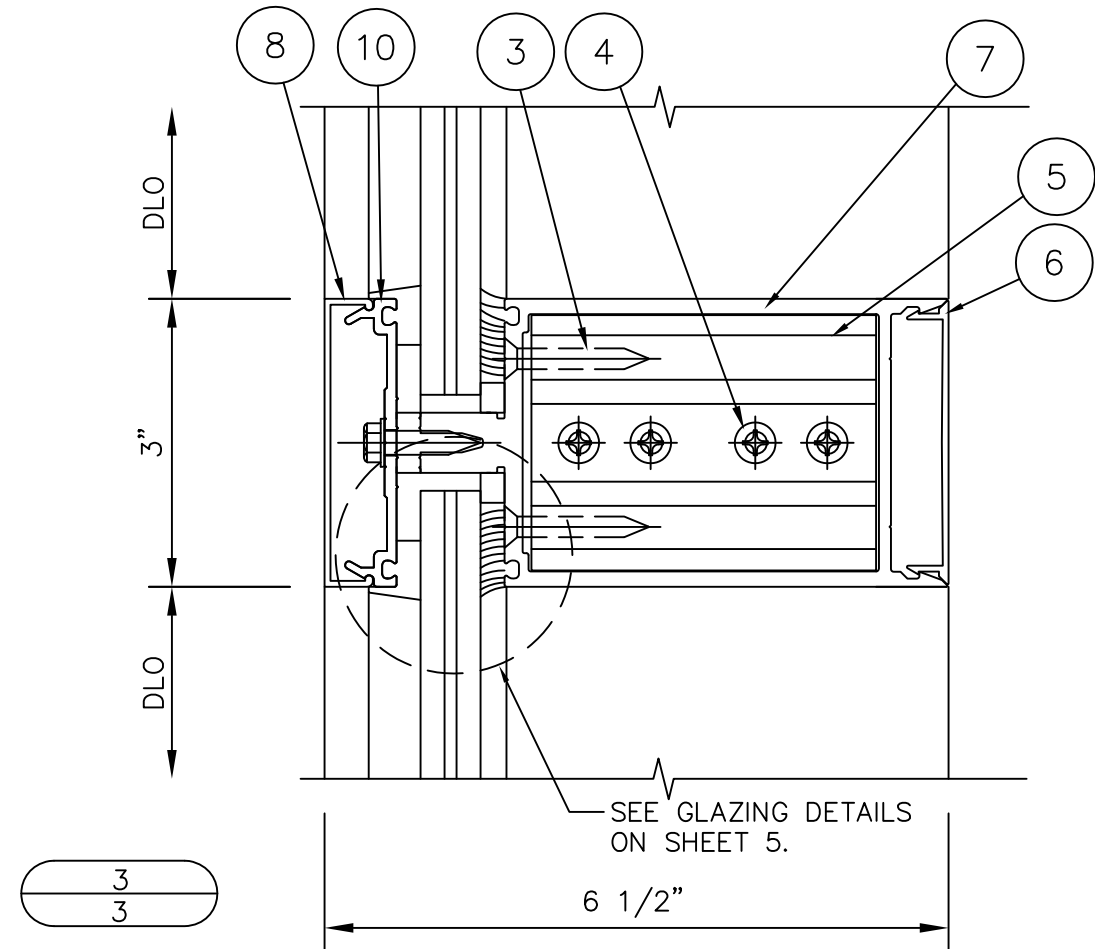
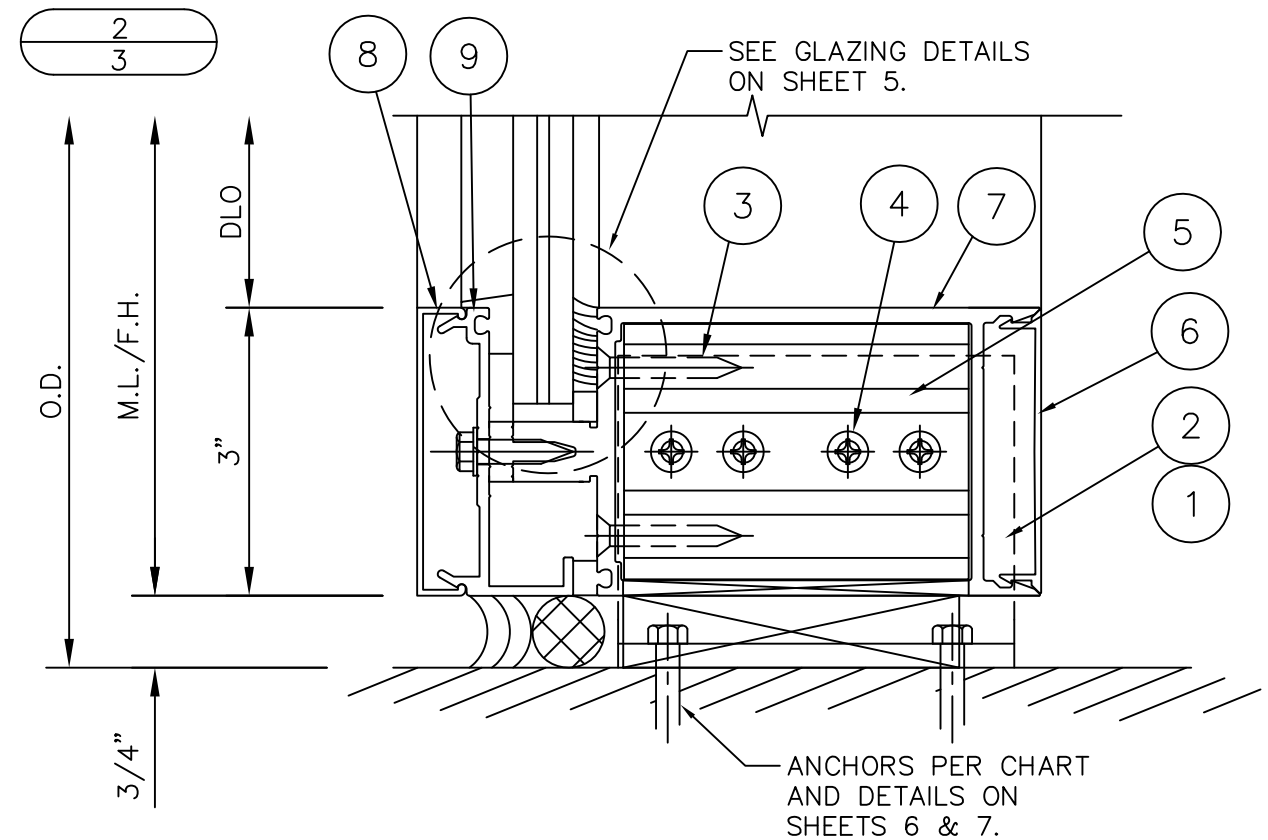
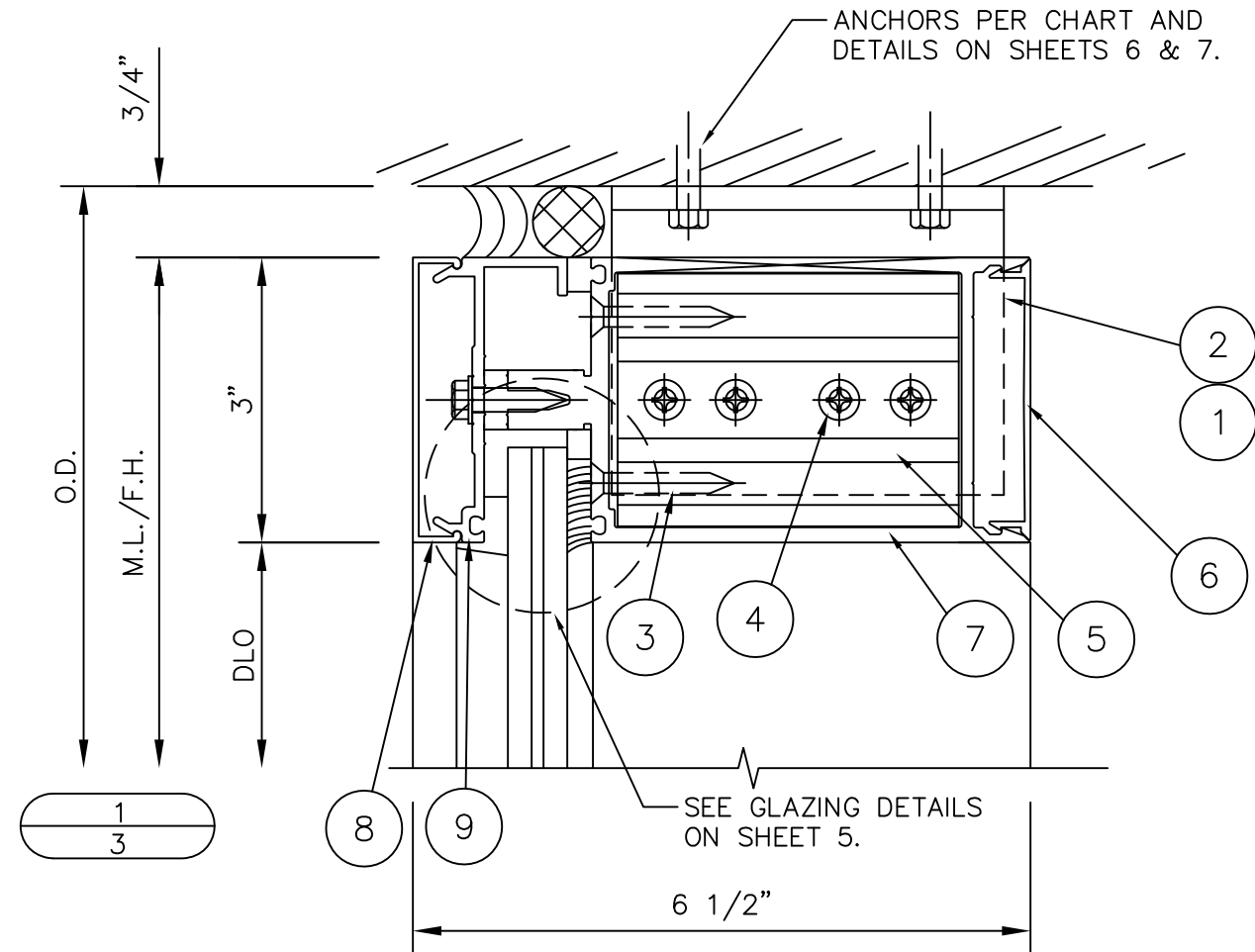
PRODUCT:
1600 WALL SYS 1
3" LEVEL E

DWG:
1600-3IR-LVLE

SECTION:
2

SHEET:
2/8

HORIZONTAL DETAILS



REV. #	DATE
1ST SUBMITTAL	7/26/21
PRINTS ISSUED	FDR

KAWNEER
AN ARCONIC COMPANY

PH: (770) 449-5555
WWW.KAWNEER.COM

555 GUTHRIDGE COURT
NORCROSS, GA 30092



9/10/2021
LUCAS TURNER
TX PE 115094
TURNER ENGINEERING & CONSULTING, INC.,
TBPE REG. #18075
2428 OLD NATCHEZ
TRACE TRL.
CAMDEN, TN, 38320
PH 941-380-1574

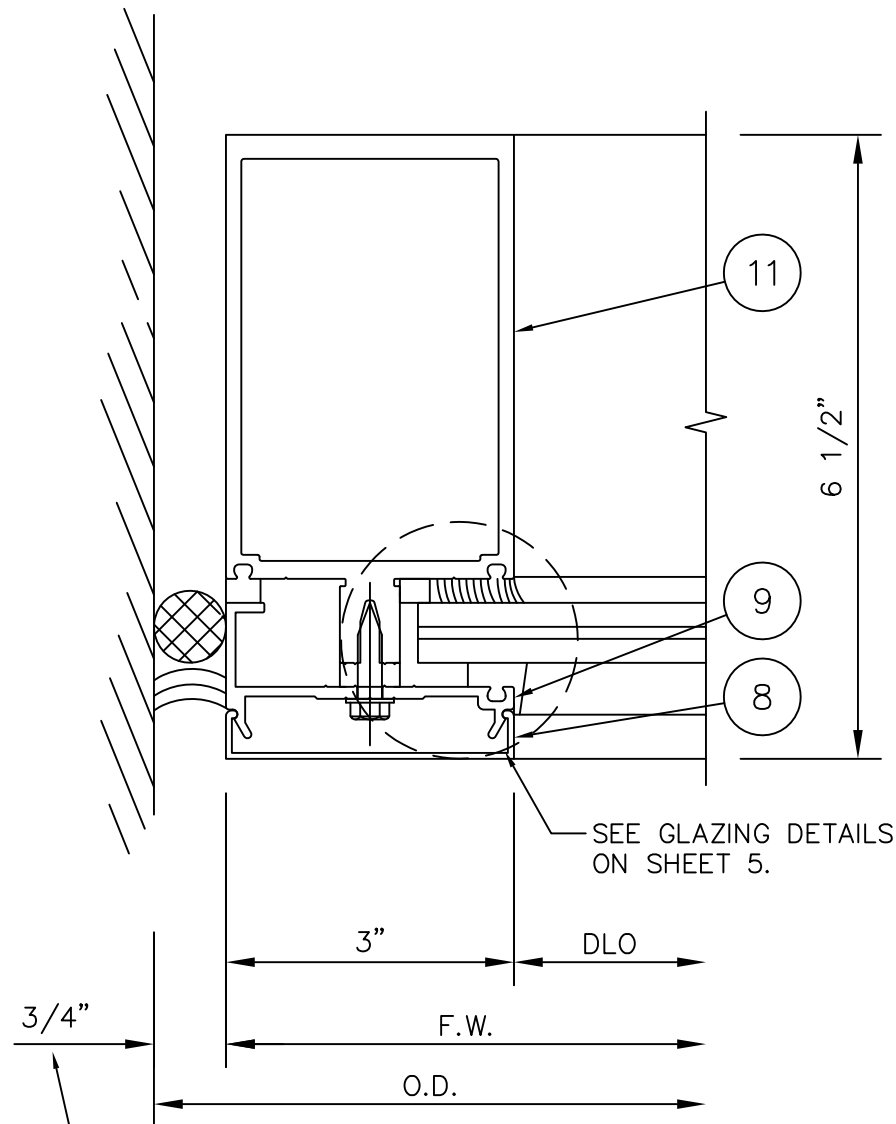
PRODUCT:
**1600 WALL SYS 1
3" LEVEL E**

DWG:
1600-31R-LVLE

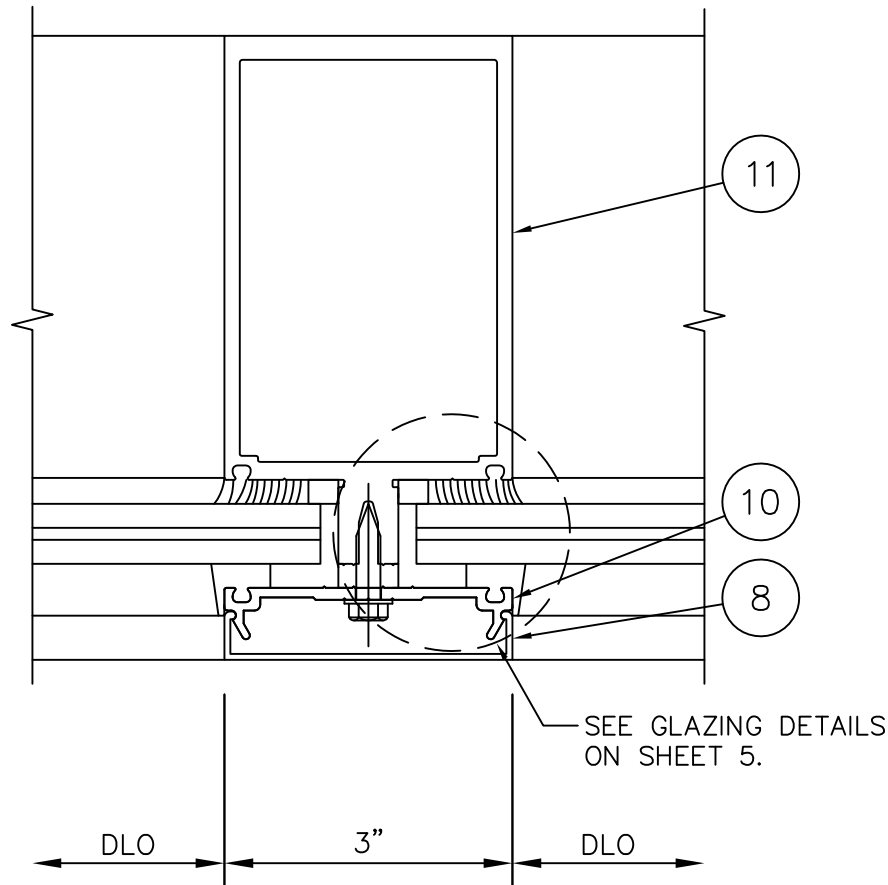
SECTION:
3

SHEET:
3/8

VERTICAL DETAILS



10
4



11
4

MULLION CHART					
		MAX DESIGN PRESSURE (psf)			
HEIGHT (in)	WIDTH (in)	MULLION M1		JAMB J1	
		(+)	(-)	(+)	(-)
78	48	100	123	100	123
	60	100	123	100	123
	64 1/2	100	123	100	123
	69	100	123	100	123
83	48	100	123	100	123
	60	100	123	100	123
	64 1/2	100	123	100	123
	69	100	123	100	123
89	48	100	123	100	123
	60	100	123	100	123
	64 1/2	100	123	100	123
	69	-	-	100	123

3/4"
3"
F.W.
O.D.
DLO

DLO 3" DLO

SEE GLAZING DETAILS ON SHEET 5.

SEE GLAZING DETAILS ON SHEET 5.

NOMINAL DIMENSION. PERIMETER SEALANT WIDTH MUST COMPLY WITH MANUFACTURER'S RECOMMENDATIONS AND ASTM C1472.

7/26/21	DATE
1ST SUBMITTAL	REV.#
PRINTS ISSUED	FDR

KAWNEER
AN ARCONIC COMPANY

555 GUTHRIDGE COURT
NORCROSS, GA 30092

PH: (770) 449-5555
WWW.KAWNEER.COM



9/10/2021
LUCAS TURNER
TX PE 115094
TURNER ENGINEERING & CONSULTING, INC.,
TBPE REG. #18075
2428 OLD NATCHEZ TRACE TRL.
CAMDEN, TN, 38320
PH 941-380-1574

PRODUCT:
**1600 WALL SYS 1
3" LEVEL E**

DWG:
1600-3IR-LVLE

SECTION:
3

SHEET:
4/8

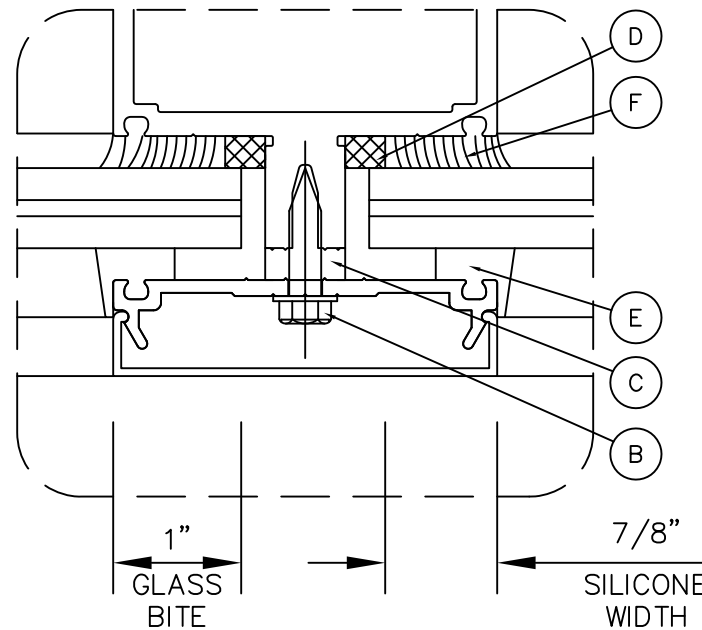
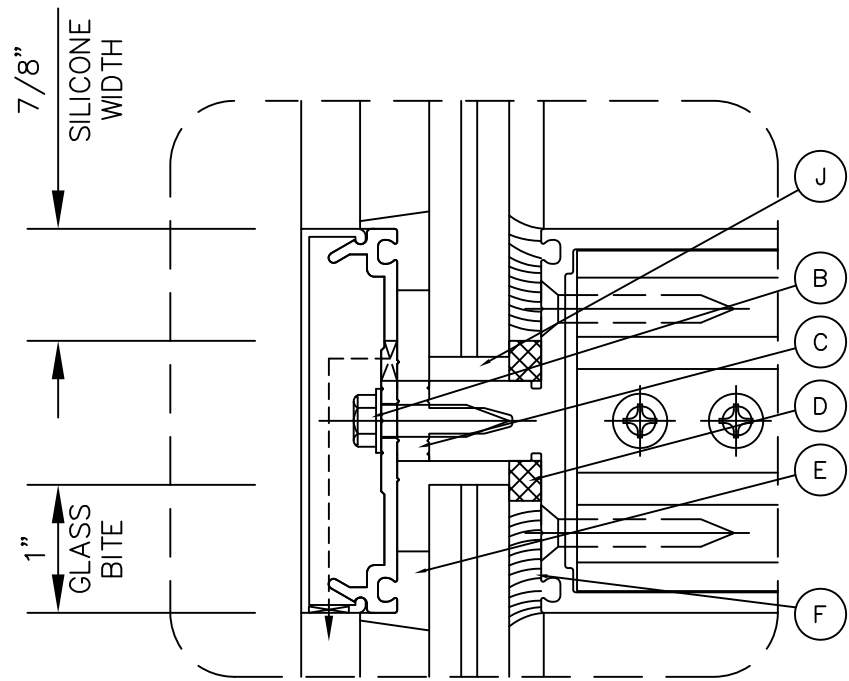
LEVEL E LARGE AND SMALL MISSILE GLAZING

GLASS TYPE 1:

- 5/8" LAMINATED
- 1/4" HEAT STRENGTHENED
- 0.050" SAFLEX HP INTERLAYER
- 0.077" VANCEVA STORM INTERLAYER
- 0.050" SAFLEX HP INTERLAYER
- 1/4" HEAT STRENGTHENED

GLASS CHART				
GLASS TYPE 1 (LEVEL E LM/SMI)				
TESTED DLO'S = 57"x83" (+100/-123 psf), 66"x40" (+100/-123 psf)				
DLO HEIGHT (in)	ALLOWABLE DESIGN PRESSURE (psf)			
	DLO WIDTH (in)			
	57	60	63	66
63	+100/-123	+100/-123	+100/-123	+100/-123
67	+100/-123	+100/-123	+100/-123	+100/-123
72	+100/-123	+100/-123	+100/-123	+100/-123
75	+100/-123	+100/-123	+100/-123	-
79	+100/-123	+100/-123	-	-
83	+100/-123	-	-	-

GLAZING DETAILS



- B 128-406 1/4 x 1" AB HWHTF (3" O.C.)
- C 162-310 THERMAL SEPARATOR (SHORE "A" 70±5 DUROMETER EPDM)
- D 027-845 1/4" X 5/16" TREMCO V2200 SERIES FOAM TAPE
- E 27-850 FIXED GASKET (SHORE "A" 60±5 DUROMETER EPDM)
- F DOW CORNING 995 SILICONE SEALANT (NBK)
- J 27-342 SETTING BLOCK-FBC 2411.3.3.1 COMPLIANT (80±5 DUROMETER NEOPRENE)

- B 128-406 1/4 x 1" AB HWHTF (3" O.C.)
- C 162-310 THERMAL SEPARATOR (SHORE "A" 70±5 DUROMETER EPDM)
- D 027-845 1/4" X 5/16" TREMCO V2200 SERIES FOAM TAPE
- E 027-850 FIXED GASKET (SHORE "A" 60±5 DUROMETER EPDM)
- F DOW CORNING 995 SILICONE SEALANT (NBK)

KAWNEER
AN ARCONIC COMPANY

PH: (770) 449-5555
WWW.KAWNEER.COM

555 GUTHRIDGE COURT
NORCROSS, GA 30092



9/10/2021
LUCAS TURNER
TX PE 115094
TURNER ENGINEERING & CONSULTING, INC.,
TBPE REG. #18075
2428 OLD NATCHEZ TRACE TRL.
CAMDEN, TN, 38320
PH 941-380-1574

PRODUCT:
**1600 WALL SYS 1
3" LEVEL E**

DWG:
1600-3IR-LVLE

SECTION:
5

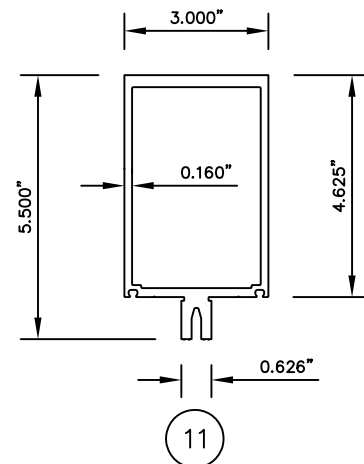
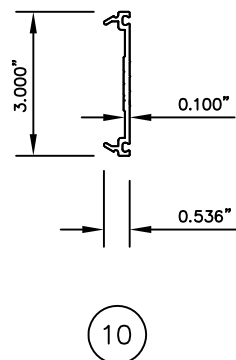
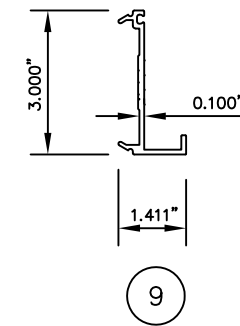
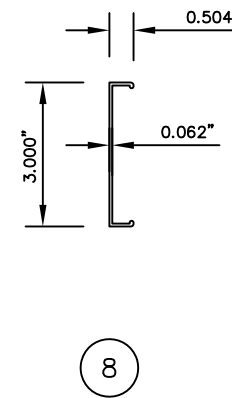
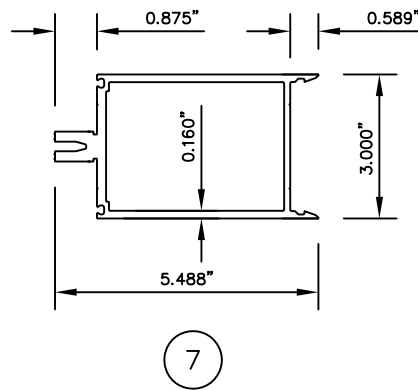
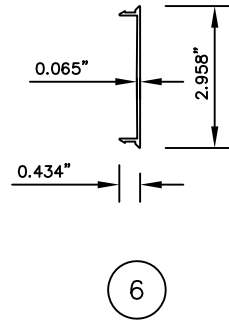
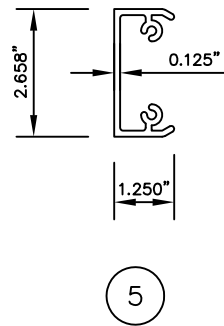
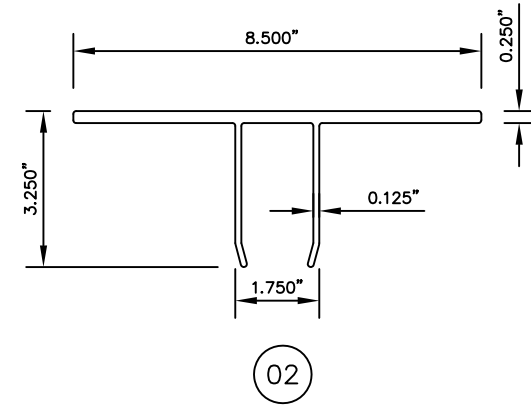
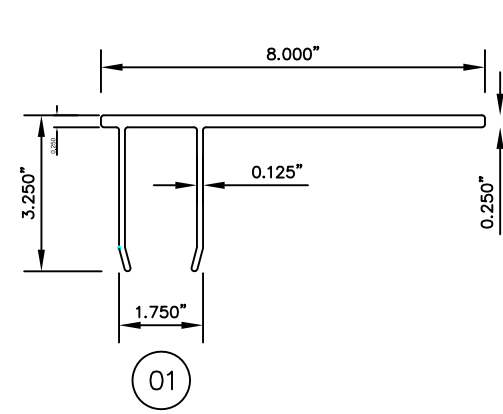
SHEET:
5/8

REV.#	DATE
1	7/26/21

BILL OF MATERIALS

EXTRUSION PROFILES

BILL OF MATERIALS			
NO.	PART NO.	DESCRIPTION	MATERIAL
01	833141	"F" ANCHOR	6063 T6 ALUMINUM
02	833142	"T" ANCHOR	6063 T6 ALUMINUM
03	128284	#12 x 1 1/2" AB FHTF SCREW	400 SERIES STAINLESS STEEL
04	128396	#12 x 7/16" B PHTF SCREW	300 SERIES STAINLESS STEEL
05	833140	SHEAR BLOCK	6063 T6 ALUMINUM
06	809752	FILLER	6063 T6 ALUMINUM
07	833136	CUSTOM HORIZONTAL	6063 T6 ALUMINUM
08	813879	3" COVER	6063 T6 ALUMINUM
09	833139	3" PERIMETER PRESSURE PLATE	6063 T6 ALUMINUM
10	808074	3" PRESSURE PLATE	6063 T6 ALUMINUM
11	808074	CUSTOM MULLION	6063 T6 ALUMINUM
12	965648	CHANNEL	6063 T6 ALUMINUM
13	027933	PERIMETER GASKET	SHORE "A" 70±5 DUROMETER EPDM



REV.#	DATE
1	7/26/21

KAWNEER
AN ARCONIC COMPANY

PH: (770) 449-5555
WWW.KAWNEER.COM

555 GUTHRIDGE COURT
NORCROSS, GA 30092



9/10/2021
LUCAS TURNER
TX PE 115094
TURNER ENGINEERING & CONSULTING, INC.,
TBPE REG. #18075
2428 OLD NATCHEZ TRACE TRL.
CAMDEN, TN, 38320
PH 941-380-1574

PRODUCT:
**1600 WALL SYS 1
3" LEVEL E**

DWG:
1600-3IR-LVLE

SECTION:
7

SHEET:
8/8