

GENERAL NOTES:

1. THIS PRODUCT HAS BEEN TESTED, ANALYZED & APPROVED FOR DESIGN PRESSURES NOT TO EXCEED THOSE SHOWN IN THE "ALLOWABLE DESIGN PRESSURE TABLE(S)".
2. OPENINGS, BUCKING & BUCKING FASTENERS MUST BE PROPERLY DESIGNED & INSTALLED TO TRANSFER WIND LOADS TO THE STRUCTURE.
3. ALL HARDWARE & FASTENERS SHALL BE IN ACCORDANCE WITH THESE DRAWINGS & SHALL NOT VARY UNLESS SPECIFICALLY MENTIONED ON THE DRAWINGS. SPECIFIED ANCHOR EMBED TO BASE MATERIAL SHALL BE BEYOND WALL FINISH OR STUCCO.
4. THE DETAILS & SPECIFICATIONS SHOWN HEREIN REPRESENT THE PRODUCTS TESTED & PROPOSED FOR WATER, AIR, IMPACT, CYCLIC & UNIFORM STATIC AIR PRESSURE TESTING IN CONFORMANCE WITH 2018 IBC REFERENCED STANDARDS AAMA 501, ASTM E330, E283, E331, E1886 & E1996 FOR LARGE MISSILE IMPACT PRODUCTS. ALL TESTING OF THIS PRODUCT TO STANDARDS LESS CURRENT THAN THOSE SPECIFIED IN THE 2018 IBC HAS BEEN DETERMINED EQUIVALENT TO THE MORE CURRENT VERSIONS OF THOSE STANDARDS REFERENCED IN THE 2018 IBC.
5. THIS PRODUCT HAS BEEN DESIGNED IN ACCORDANCE WITH AND MEET THE REQUIREMENTS OF THE 2018 INTERNATIONAL BUILDING CODE (IBC).
6. IMPACT SHUTTERS ARE NOT REQUIRED WITH THIS PRODUCT.
7. ALL ANCHORS SECURING PRODUCT FRAMES TO PRESSURE TREATED BUCKS OR WOOD FRAMING SHALL BE CAPABLE OF RESISTING CORROSION CAUSED BY THE PRESSURE TREATING CHEMICALS IN THE WOOD.
8. DETERMINE THE POSITIVE & NEGATIVE DESIGN LOADS TO USE WHEN REFERENCING THESE DOCUMENTS IN ACCORDANCE WITH THE GOVERNING CODE AND GOVERNING WIND VELOCITY. FOR WIND LOAD CALCULATIONS IN ACCORDANCE WITH THE INTERNATIONAL BUILDING CODE, A DIRECTIONALITY FACTOR OF $KD = 0.85$ MAY BE APPLIED PER THE ASCE-7 STANDARD.
9. MATERIALS, INCLUDING BUT NOT LIMITED TO STEEL SCREWS, THAT COME INTO CONTACT WITH OTHER DISSIMILAR MATERIALS SHALL BE SEPARATED OR COATED AS REQUIRED TO AVOID CORROSION OF EITHER MATERIAL.
10. TO THE BEST OF OUR KNOWLEDGE, THE PRODUCT SHOWN HEREIN ARE QUALITY ASSURED BY AN APPROVED CERTIFICATION/QA ENTITY & SHALL BE LABELED IN ACCORDANCE WITH APPLICABLE STANDARDS. THESE DRAWINGS SHOW ALL APPLICABLE ELEVATION, COMBINATION, INSTALLATION & COMPARATIVE ANALYSIS CONDITIONS AS DETERMINED THROUGH TESTING & ENGINEERING RATIONAL ANALYSIS. PRODUCT ASSEMBLY SHALL BE IN ACCORDANCE WITH THESE DRAWINGS, THE MANUFACTURER'S QUALITY ASSURANCE SPECIFICATIONS & TESTING REPORTS.
11. CERTIFICATION OF THIS PRODUCT SHALL BE CONSIDERED VOID IF THEY ARE INSTALLED WITHOUT A BUILDING PERMIT FROM THE APPLICABLE LOCAL BUILDING DEPARTMENT OR IF THEY ARE INSTALLED BY ANYONE OTHER THAN A LICENSED CONTRACTOR EXPERIENCED WITH INSTALLATIONS OF THIS TYPE OF PRODUCT.

CORNER & FRAME END CONSTRUCTION:

FRAME HEAD CORNER (APPLICABLE TO ITEM #1A & 1B): HEAD IS SQUARE CUT, BUTTED TO SIDE, FASTENED WITH THREE(3) NO. 12 X 1" PHTFS FASTENERS THROUGH THE SIDE MEMBER INTO THE HEAD MEMBER SCREW SPLINES & SEALED WITH SILICONE.

FRAME HEAD CORNER (APPLICABLE TO ITEM #1C): HEAD IS MITER OR SQUARE CUT, BUTTED TO SIDE, FASTENED WITH TWO(2) NO. 12 X 1 1/2" PHTFS FASTENERS THROUGH THE SIDE MEMBER INTO THE HEAD MEMBER SCREW SPLINES & SEALED WITH SILICONE.

FRAME SILL CORNER: SILL IS SQUARE CUT, BUTTED TO SIDE, FASTENED WITH THREE(3) NO. 12 X 1" PHTFS FASTENERS THROUGH THE SIDE MEMBER INTO THE SILL MEMBER SCREW SPLINES & SEALED WITH SILICONE.

FRAME DOOR JAMB SILL CORNER: SILL IS SQUARE CUT, BUTTED TO SIDE, FASTENED WITH 1 JAMB PIVOT ASSEMBLY. EACH PIVOT ASSEMBLY WAS FASTENED TO THE SIDE WITH THREE(3) NO. 12-24 X 5/8" FHMS. THE THRESHOLD IS THEN FASTENED TO PIVOT ASSEMBLY WITH TWO(2) NO. 12-24 X 3/8" FHMS & SEALED WITH SILICONE.

HORIZONTAL FRAME MULLION END (APPLICABLE TO ITEMS #6A & #7): HORIZONTAL IS SQUARE CUT, BUTTED TO SIDE, FASTENED WITH THREE(3) NO. 12 X 1" SS PHTFS FASTENERS THROUGH THE SIDE MEMBER INTO THE MULLION MEMBER SCREW SPLINES & SEALED WITH SILICONE.

HORIZONTAL FRAME MULLION END (APPLICABLE TO ITEM #6B): HORIZONTAL IS SQUARE CUT, BUTTED TO SIDE, JOINED VIA A SHEAR BLOCK (PART #21). THE SHEAR BLOCK IS FASTENED TO THE VERTICAL FRAME MEMBER WITH FOUR(4) NO. 12 X 1 7/8" FHTF TYPE B SCREWS. THE HORIZONTAL MEMBER IS FASTENED TO THE SHEAR BLOCK WITH THREE(3) NO. 12 X 1" FHTF TYPE AB SCREWS. EACH CORNER IS SEALED WITH DOW 795 SILICONE SEALANT.

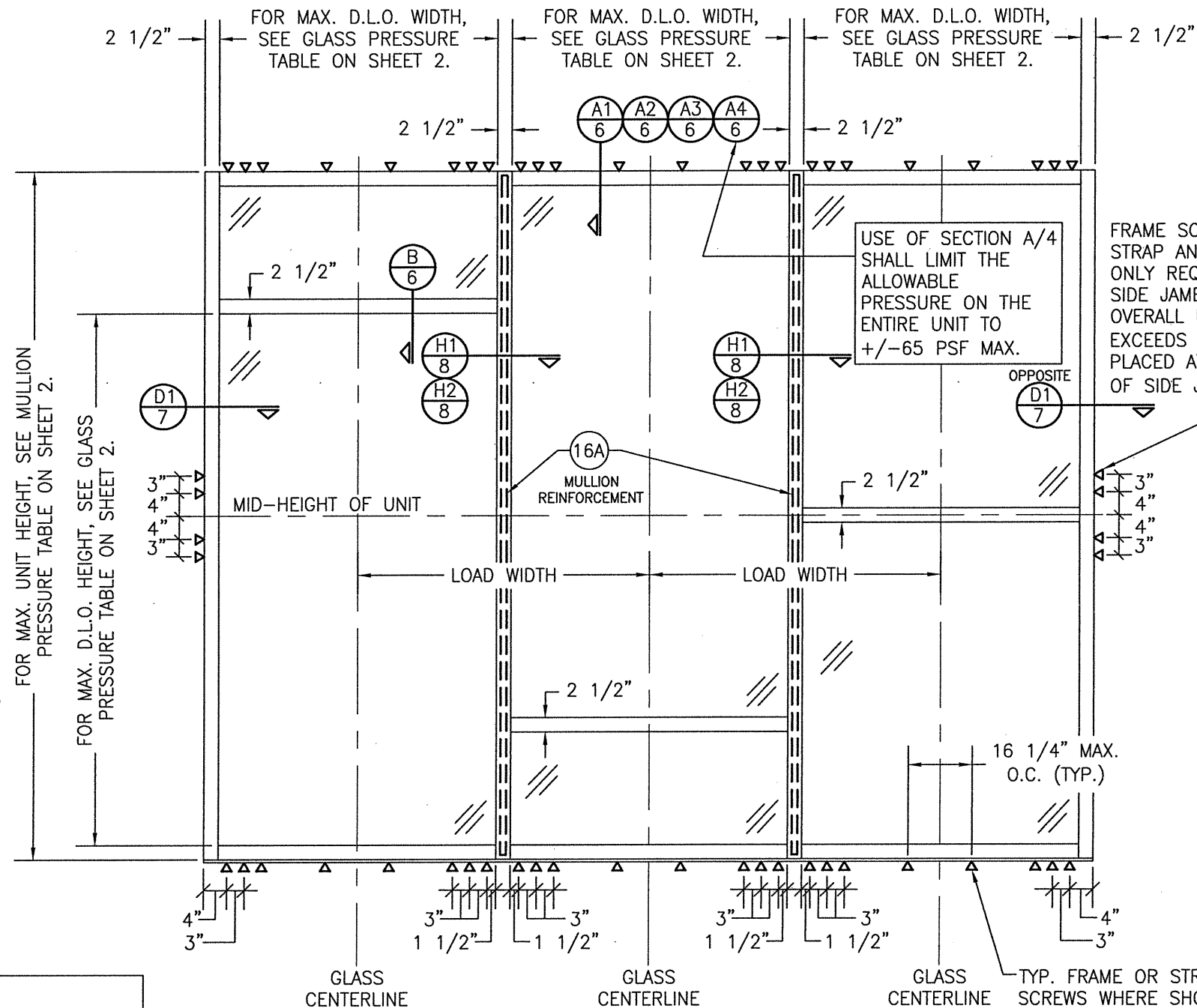
FRAME ANCHOR REQUIREMENTS TABLE

FRAME & STRAP ANCHOR SCREWS

OPENING TYPE	OPENING TYPE (SUBSTRATE)	FRAME TO OPENING FASTENER TYPE	MINIMUM EMBED	MINIMUM EDGE DIST.
A	MIN. 2X6 WOOD FRAME OR BUCK (MIN. GR. 3 & G=0.55)	NO. 14 SMS OR WOOD SCREW	1 1/4"	3/4"
B	MIN. 1/8" THK A36 STEEL	1/4" GR. 5 SELF TAP/DRILL SCREW	FULL	1/2"
C	MIN. 3000 PSI CONCRETE	(1) 1/4" CONCRETE SCREW	1 1/2"	2 1/2"
D	MIN. 18 GA. 33 KSI METAL STUD	1/4" GR. 5 SELF TAP/DRILL SCREW	FULL	1/2"
E	MIN. C-90 CMU	(1) 1/4" CONCRETE SCREW	1 1/4"	2 1/2"
(3) F	MIN. 3000 PSI CONCRETE	(2) 3/8" WEDGE/SLEEVE ANCHOR	2 1/2"	3"

- (1) CONCRETE SCREWS SHALL BE ELCO ULTRACONS (C.S.), ELCO CRETE-FLEX (S.S.) OR HILTI KWIK-CON II (C.S OR S.S.).
- (2) WEDGE/SLEEVE ANCHORS SHALL BE RAMSET/RED HEAD DYNABOLT, HILTI KWIK-BOLT 3, OR POWERS RAWL POWER BOLT (STEEL OR S.S.)
- (3) ANCHOR TYPE "F" IS ONLY APPLICABLE FOR USE WITH THE SILL ANCHOR BLOCK AT THE VERTICAL DOOR MULLION BOTTOM END.

EVALUATION OF THIS PRODUCT IS BASED ON APPLICABLE STANDARDS AND/OR INFORMATION & RESULTS FROM APPLICABLE TEST REPORTS. THE BUILDING CODE VERSION CONSIDERED WITH THIS EVALUATION WAS THAT IN FORCE AT THE TIME OF THE EVALUATION. IN THE EVENT OF CODE VERSION CHANGES/UPDATES OR IN THE EVENT THAT NEW OR ADDITIONAL TESTING IS COMPLETED ON THIS PRODUCT, PRIOR TO STATING CODE COMPLIANCE, THE MANUFACTURER SHALL CONFIRM WITH THE EVALUATION ENGINEER OF RECORD THAT EVERYTHING SPECIFIED HERE-IN IS CURRENT WITH ALL CURRENT TESTING, CODES AND APPLICABLE STANDARDS.



**EXTERIOR ELEVATION
MULTIPLE FIXED PANEL STORE FRONT ASSEMBLY
(WHEN ANCHORED TO WOOD, METAL STUD, CONCRETE OR CMU)**

SCALE: 1/2"=1'-0"

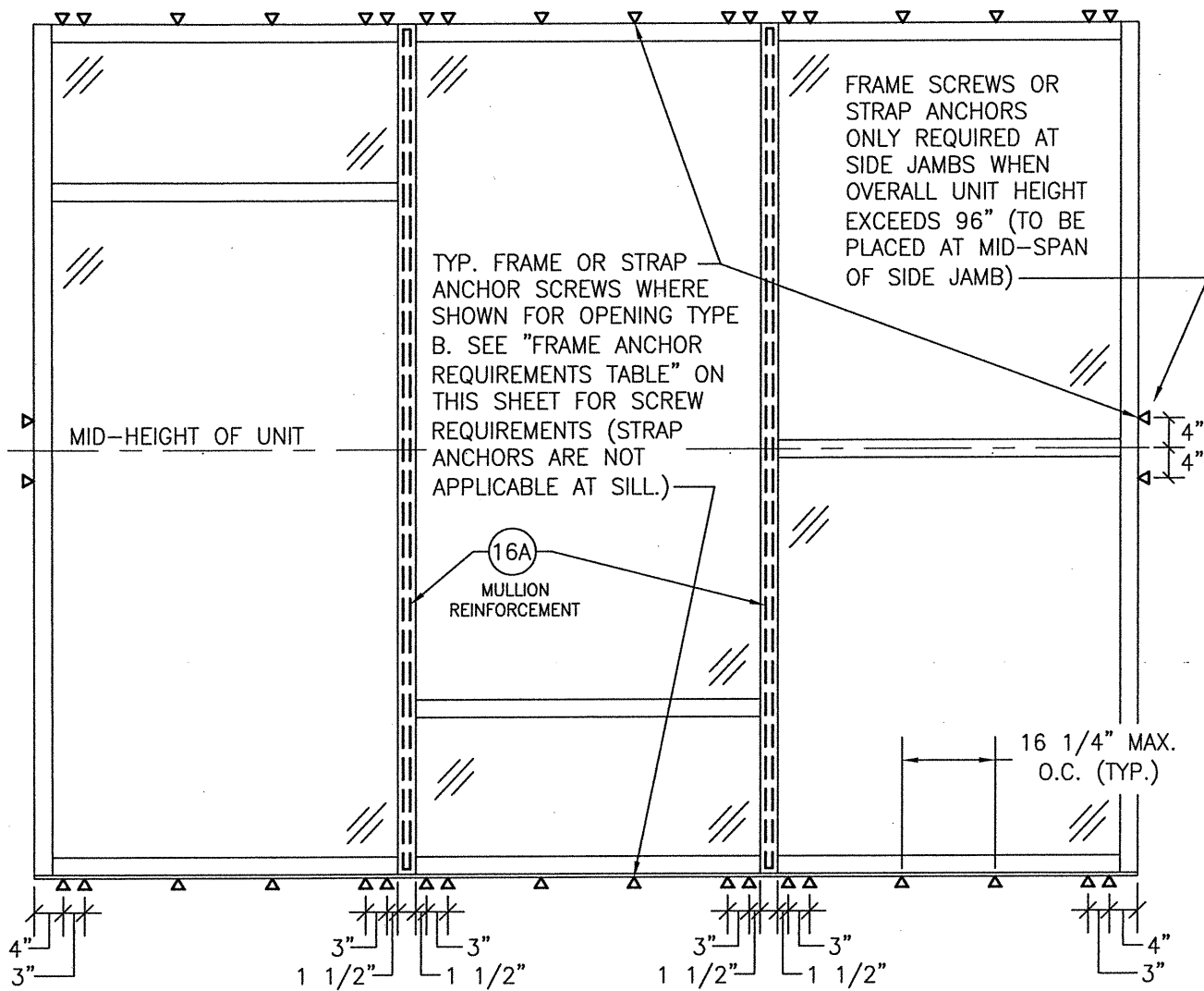
HORIZONTAL STACKING & OVERALL UNIT WIDTH IS UNLIMITED PROVIDING DIMENSIONS SPECIFIED ARE NOT EXCEEDED. NUMBER OF VERTICAL PANELS IS UNLIMITED BUT MUST FIT INSIDE MAXIMUM UNIT HEIGHT SHOWN.

NOTE: CMU IS APPLICABLE ONLY AT SIDES.

TYP. FRAME OR STRAP ANCHOR SCREWS WHERE SHOWN FOR OPENING TYPE A, C, D OR E. SEE "FRAME ANCHOR REQUIREMENTS TABLE" ON THIS SHEET FOR SCREW REQUIREMENTS (STRAP ANCHORS ARE NOT APPLICABLE AT SILL.)

DRAWN BY: W.R.M.	CHECKED BY: W.W.S.
DATE: 10/28/16	DATE: 03/19/13
NO. 1	REVISION DESCRIPTION
A1	CHANGE SHIM SPACE
B1	UPDATE TO 2018 I.B.C.
JOB INFORMATION:	
IR500 ALUMINUM STORE FRONT SYSTEM - LARGE MISSILE IMPACT	
KAWNEER COMPANY, INC. 555 GUTHRIE COURT NORCROSS, GA 30092 770-449-5555	
CONSULTANTS:	
W. W. SCHAEFER ENGINEERING & CONSULTING, P.A. (REG. NO. F-14980) 7480 150TH COURT NORTH PALM BEACH GARDENS, FL 33418 PHONE: 561-744-3424	
DRAWING TITLE	
IR500 ALUMINUM STORE FRONT SYSTEM - LARGE MISSILE IMPACT	
CERTIFICATION	
MAR 08 2017	
WARREN W. SCHAEFER, P.E. P.E. NO. 113497	
DRAWING NO.	REV.
1633T	B
SHEET NO.	
1 OF 10	

THESE DRAWINGS ARE APPLICABLE ONLY TO THE PRODUCT SPECIFIED. THEY MAY NOT BE USED FOR THE ASSEMBLY AND/OR INSTALLATION OF ANY OTHER PRODUCT NOR MAY THEY BE USED FOR RATIONAL AND/OR LOCAL APPROVAL OF ANY PRODUCT NOT PRODUCED BY THE MANUFACTURER STATED ON THESE DRAWINGS.



EXTERIOR ELEVATION
MULTIPLE FIXED PANEL STORE FRONT ASSEMBLY
(WHEN ANCHORED TO STEEL)
 SCALE: 1/2"=1'-0"

* FOR ALL FRAMING & D.L.O. DIMENSIONS AND OTHER INFORMATION NOT SHOWN, SEE ELEVATION ON SHEET 1.
 * IF SILL IS CONCRETE, SEE ELEVATION ON SHEET 1 FOR SILL ANCHORAGE REQUIREMENTS.

MULLION ALLOWABLE DESIGN PRESSURE

MAXIMUM UNIT HEIGHT (IN.)	MAXIMUM LOAD WIDTH (IN.)	ALLOWABLE PRESSURE (+/- PSF)	
		NON REINFORCED	REINFORCED
120	60	N/A	54.7
	54	N/A	60.8
	50 1/2	N/A	65.0
	48	N/A	68.4
	42	N/A	78.2
108	60	N/A	90.0
	54	N/A	70.2
	50 1/2	N/A	75.1
	48	N/A	79.0
	42	N/A	90.0
102	60	N/A	75.0
	54	N/A	83.4
	50 1/2	N/A	89.1
96	60	90.0	90.0

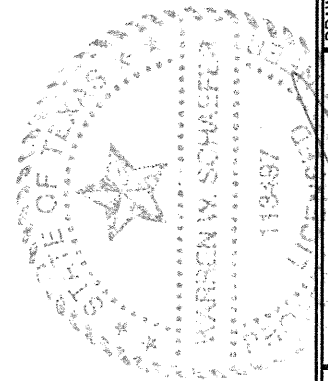
NOTES:
 1. SEE ELEVATIONS FOR DIMENSIONING OF LOAD WIDTH.
 2. ALLOWABLE UNIT PRESSURE SHALL BE THE LESSER OF THE PRESSURE SHOWN IN THIS TABLE & THAT SPECIFIED FOR THE GLASS.
 3. "N/A" DESIGNATES A SIZE NOT APPLICABLE TO THAT REINFORCEMENT CONDITION.
 4. SEE SECTION H2/8 FOR DETAIL OF NON-REINFORCED MULLION & SECTION H1/8 FOR REINFORCED MULLION.

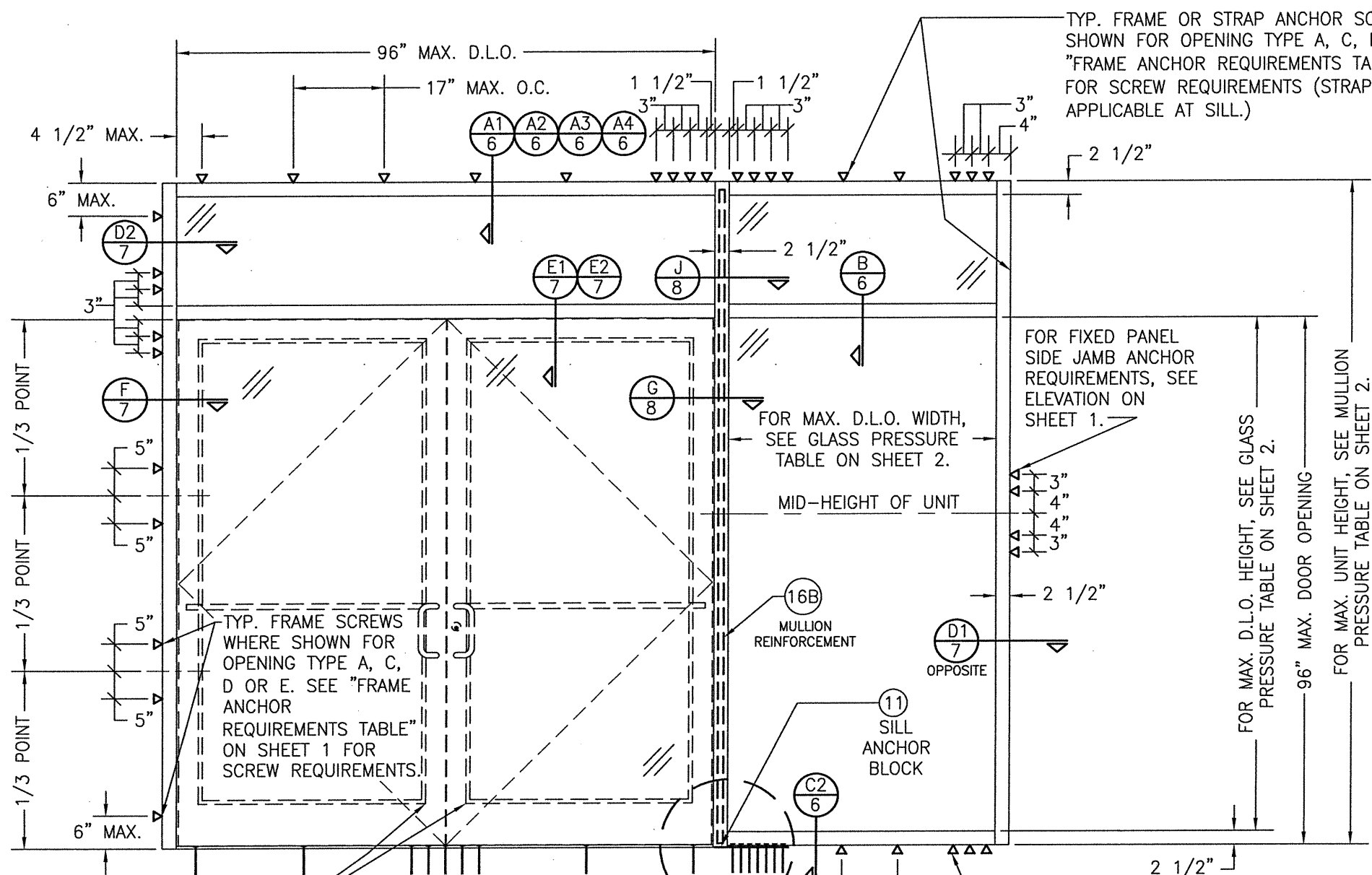
GLASS ALLOWABLE PRESSURE TABLE

MAXIMUM D.L.O. HEIGHT (IN.)	MAXIMUM D.L.O. WIDTH (IN.)	ALLOWABLE PRESSURE (+/- PSF)	
		GLASS OPTION 1, 2 & 5	GLASS OPTION 3 & 4
91	57 1/2	N/A	90
92 3/4	48	65	90
97	54	N/A	90
97	45 3/4	65	90
103	50 3/4	N/A	90
103	43 1/4	65	90
109	48	N/A	90
109	40 3/4	65	90
115	45 1/2	N/A	90
115	38 3/4	65	90

NOTES:
 1. SEE ELEVATIONS FOR DIMENSIONING OF D.L.O. HEIGHT & WIDTH.
 2. ALLOWABLE UNIT PRESSURE SHALL BE THE LESSER OF THE PRESSURE SHOWN IN THIS TABLE & THAT SPECIFIED FOR THE VERTICAL MULLIONS.
 3. "N/A" DESIGNATES A SIZE NOT APPLICABLE TO THAT REINFORCEMENT CONDITION.

DRAWN BY: W.R.M.	CHECKED BY: W.W.S.
PLOT: 1=24	DATE: 03/19/13
DATE	BY
REVISION DESCRIPTION	NO.
DRAWING TITLE IR500 ALUMINUM STORE FRONT SYSTEM - LARGE MISSILE IMPACT	
JOB INFORMATION: KAWNEER COMPANY, INC. 555 GUTHRIE COURT NORCROSS, GA 30092 770-449-5555	
CONSULTANTS W. W. SCHAEFER ENGINEERING & CONSULTING, P.A. (REG. NO. F-14980) 7480 150TH COURT NORTH, 33418 PALM BEACH GARDENS, FL 33418 PHONE: 561-744-3424	
CERTIFICATION	MAR 08 2021
WARREN W. SCHAEFER, P.E. P.E. NO. 113487	
DRAWING NO. 1633T	REV. B
SHEET NO. 2 OF 10	





TYP. FRAME OR STRAP ANCHOR SCREWS WHERE SHOWN FOR OPENING TYPE A, C, D OR E. SEE "FRAME ANCHOR REQUIREMENTS TABLE" ON SHEET 1 FOR SCREW REQUIREMENTS (STRAP ANCHORS ARE NOT APPLICABLE AT SILL.)

FOR FIXED PANEL SIDE JAMB ANCHOR REQUIREMENTS, SEE ELEVATION ON SHEET 1.

FOR MAX. D.L.O. WIDTH, SEE GLASS PRESSURE TABLE ON SHEET 2.

MID-HEIGHT OF UNIT

FOR MAX. D.L.O. HEIGHT, SEE GLASS PRESSURE TABLE ON SHEET 2.

96" MAX. DOOR OPENING

FOR MAX. UNIT HEIGHT, SEE MULLION PRESSURE TABLE ON SHEET 2.

350 IR LARGE MISSILE IMPACT OUT-SWING DOORS & SILL ANCHORS UNDER SEPERATE APPROVAL

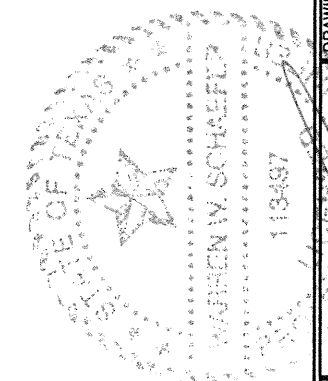
SEE MULLION END DETAILS ON SHEET 9

SEE ELEVATION ON SHEET 1 FOR CONDITIONAL OMISSION OF THIS ANCHOR (TYP. HEAD & SILL)

EXTERIOR ELEVATION
STORE FRONT ASSEMBLY WITH DOORS & TRANSOM
(WHEN ANCHORED TO WOOD, METAL STUD, COINCRETE OR CMU)
 SCALE: 1/2"=1'-0"

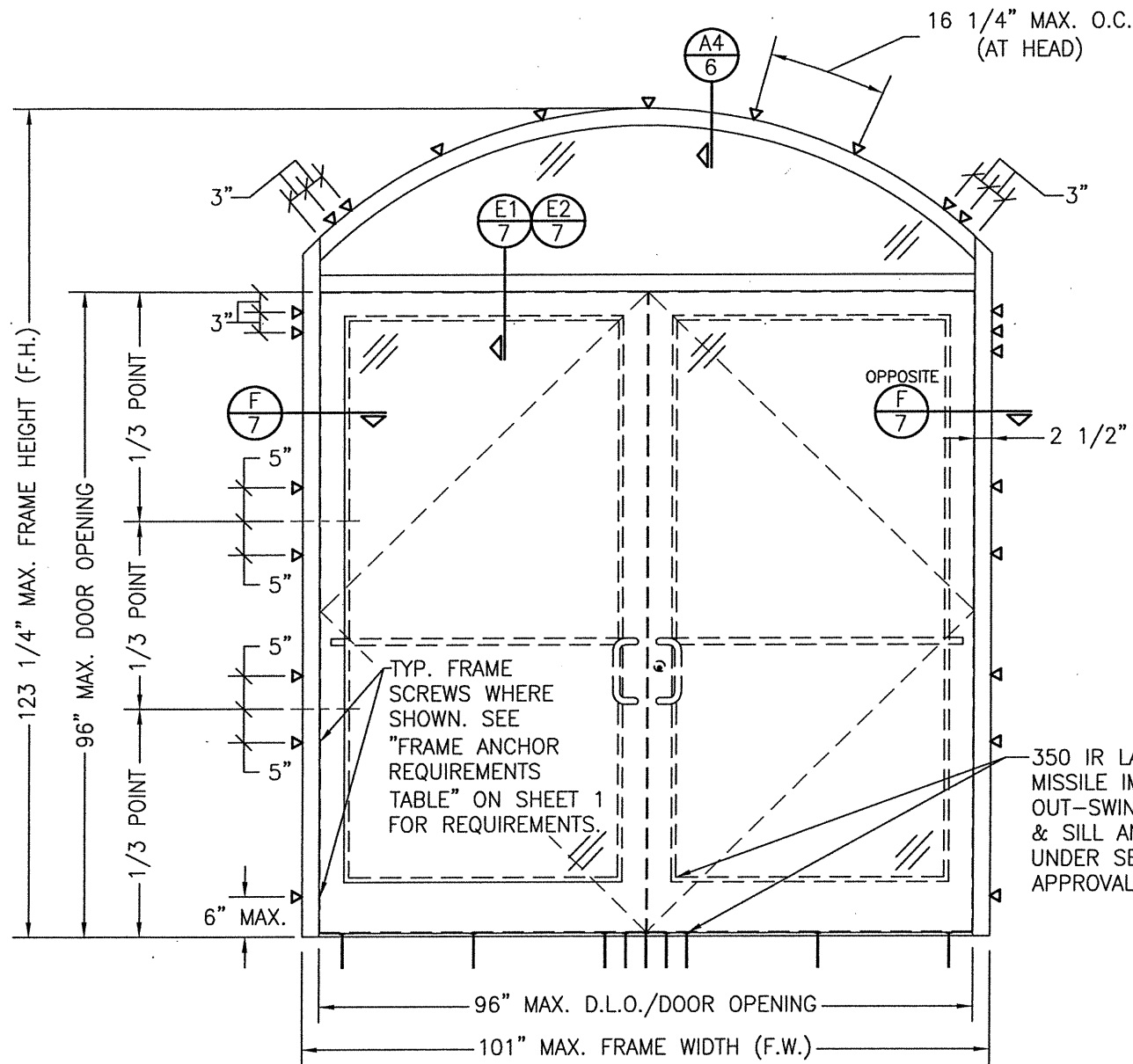
- * SINGLE SIDELIGHT SHOWN, MULTIPLE SIDELIGHT CONDITION ALSO APPLIES WITH SIDELIGHT AT ONE OR BOTH SIDES.
- * DOUBLE DOOR CONDITION SHOWN, SINGLE DOOR CONDITION ALSO APPLIES.
- * HORIZONTAL STACKING & OVERALL UNIT WIDTH IS UNLIMITED. NUMBER OF VERTICAL PANELS IS UNLIMITED BUT MUST FIT INSIDE MAXIMUM FRAME HEIGHT SHOWN.

ALLOWABLE DESIGN PRESSURE (DOOR UNITS)
+/-65 PSF
ONLY THE DOOR/TRANSOM AREA & THE PANEL SECTIONS DIRECTLY NEXT TO THE DOOR AREA ARE RESTRICTED TO +/-65 PSF. FOR ALLOWABLE PRESSURE ON GLASS PANEL AREAS OF THE STOREFRONT ASSEMBLY AWAY FROM THE DOORS, SEE GLASS AND MULLION PRESSURE TABLES ON SHEET 2.



DRAWN BY: W.R.M.	CHECKED BY: W.W.S.
PLOT: 1-24	DATE: 03/19/13
NO.	REVISION DESCRIPTION
NO.	REVISION DESCRIPTION
NO.	REVISION DESCRIPTION
NO.	REVISION DESCRIPTION
NO.	REVISION DESCRIPTION
JOB INFORMATION: IR500 ALUMINUM STORE FRONT SYSTEM - LARGE MISSILE IMPACT	
KAWNEER COMPANY, INC. 555 GUTHRIDGE COURT NORCROSS, GA 30092 770-449-5555	
CONSULTANTS: W. W. SCHAEFER ENGINEERING & CONSULTING, P.A. (REG. NO. F-14980) 7480 150TH COURT NORTH PALM BEACH GARDENS, FL 33418 PHONE: 561-744-3424	
CERTIFICATION MAR 08 2021	WARREN W. SCHAEFER P.E. NO. 113497
DRAWING NO. 1633T	REV. B
SHEET NO. 3 OF 10	

TYP. FRAME OR STRAP ANCHOR SCREWS WHERE SHOWN. SEE "FRAME ANCHOR REQUIREMENTS TABLE" ON SHEET 1 FOR REQUIREMENTS (STRAP ANCHORS ARE NOT APPLICABLE AT DOOR SIDE JAMBS AND SILL).



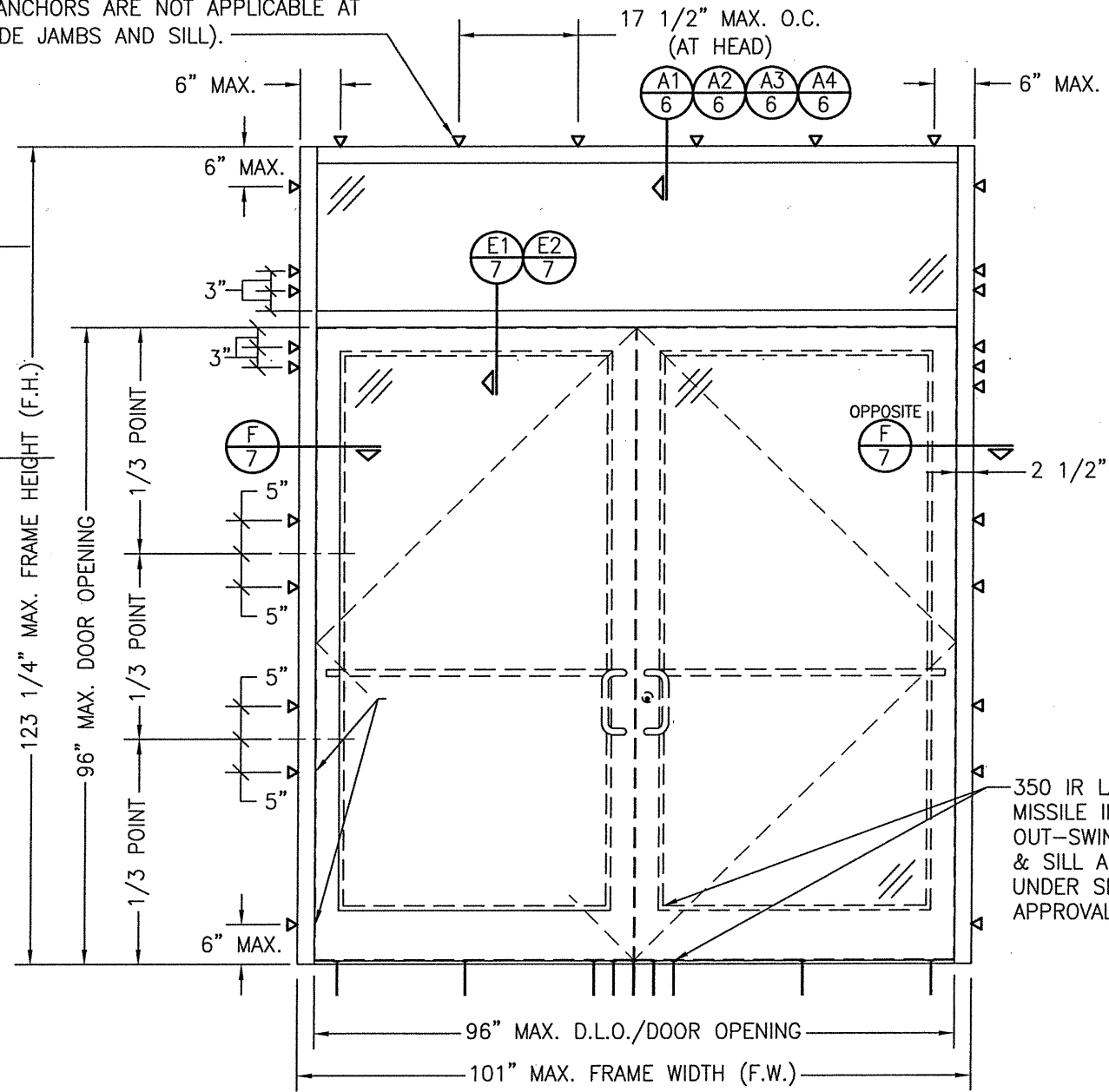
EXTERIOR ELEVATION
STORE FRONT FRAMING WITH DOORS & EYEBROW TRANSOM
(APPLICABLE WITH ALL SUBSTRATES)

(DOUBLE DOOR CONDITION SHOWN, SINGLE DOOR CONDITION ALSO APPLIES)

SCALE: 1/2"=1'-0"

ALLOWABLE DESIGN PRESSURE
(DOOR WITH TRANSOM UNITS)

+/-65 PSF

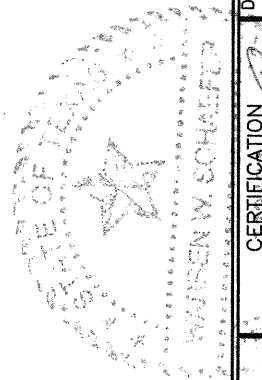


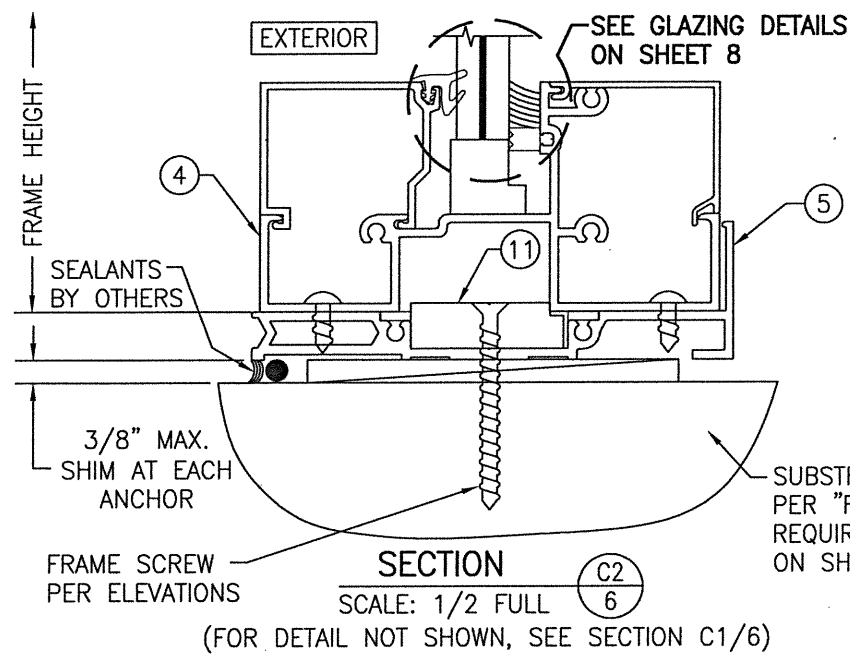
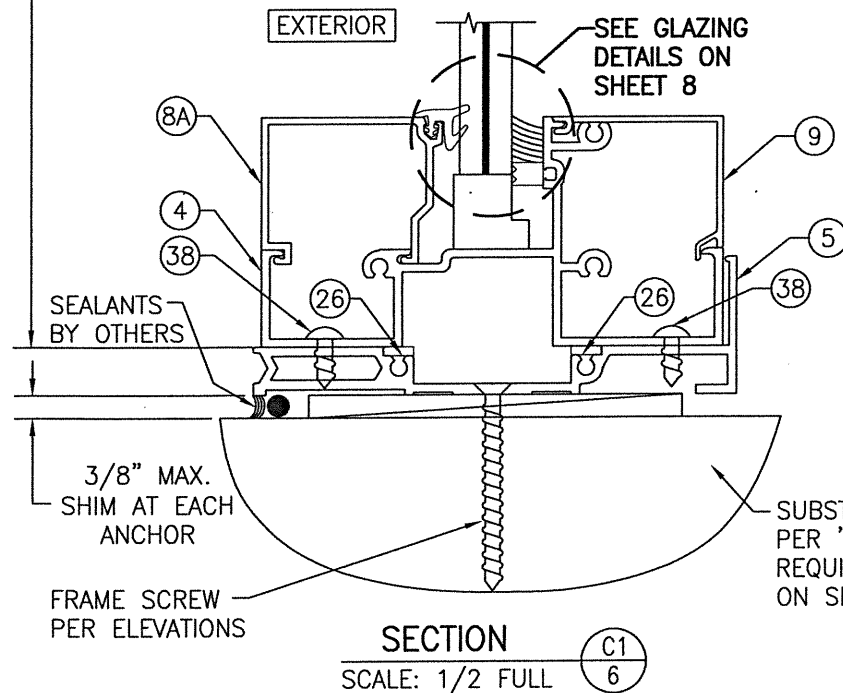
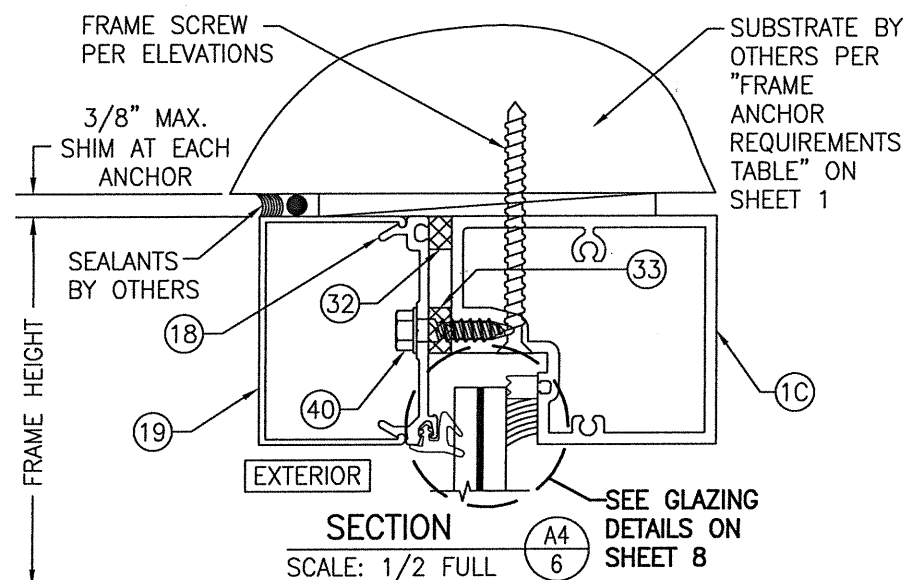
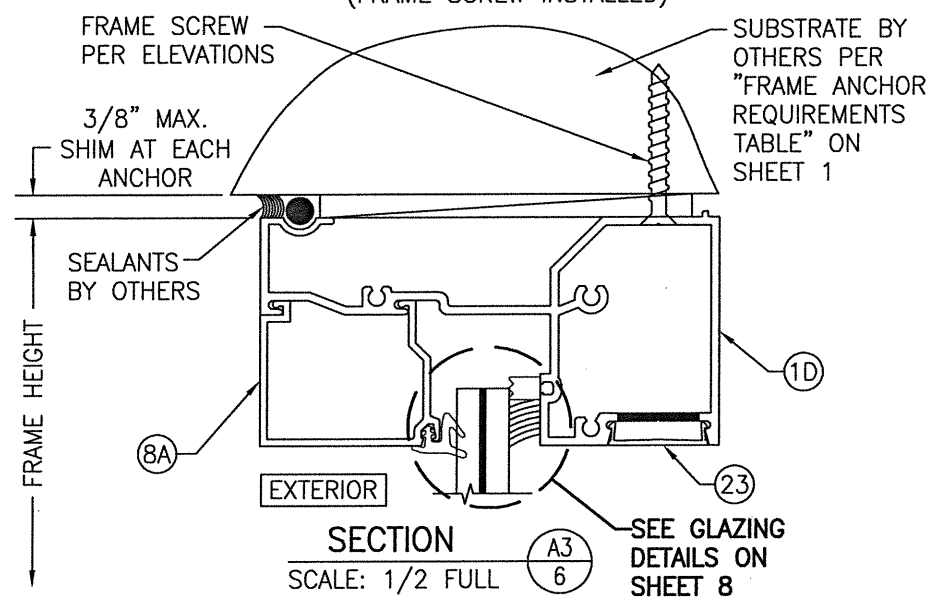
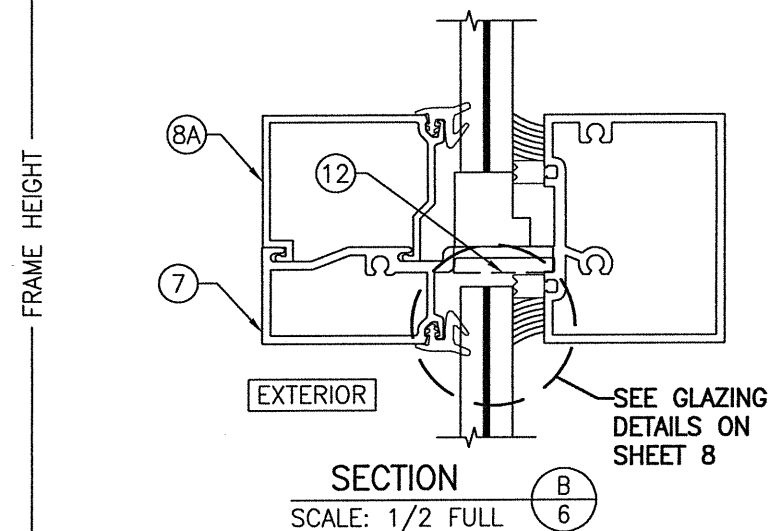
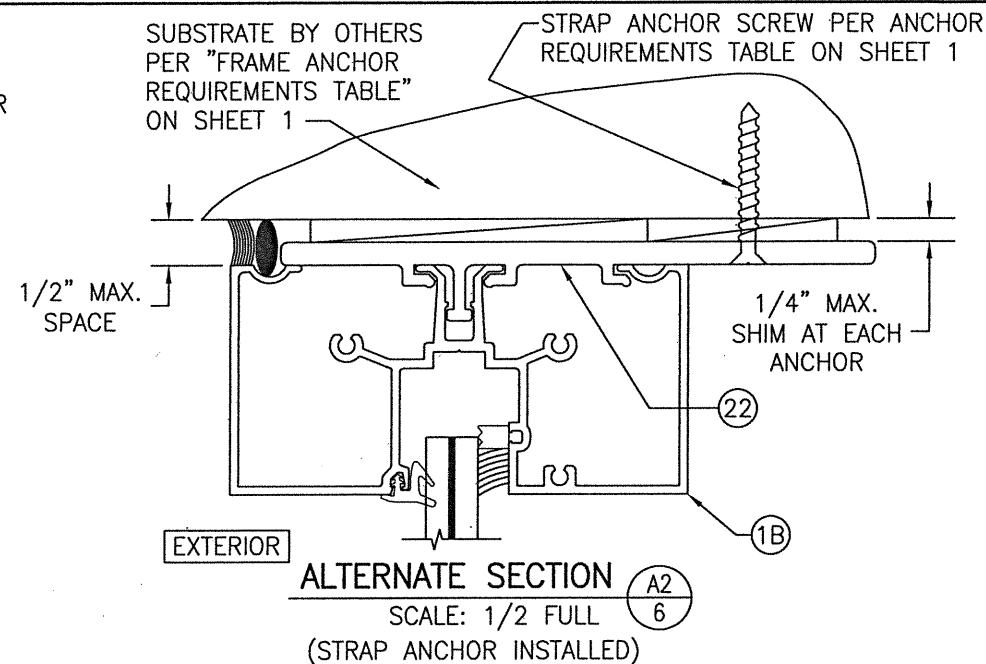
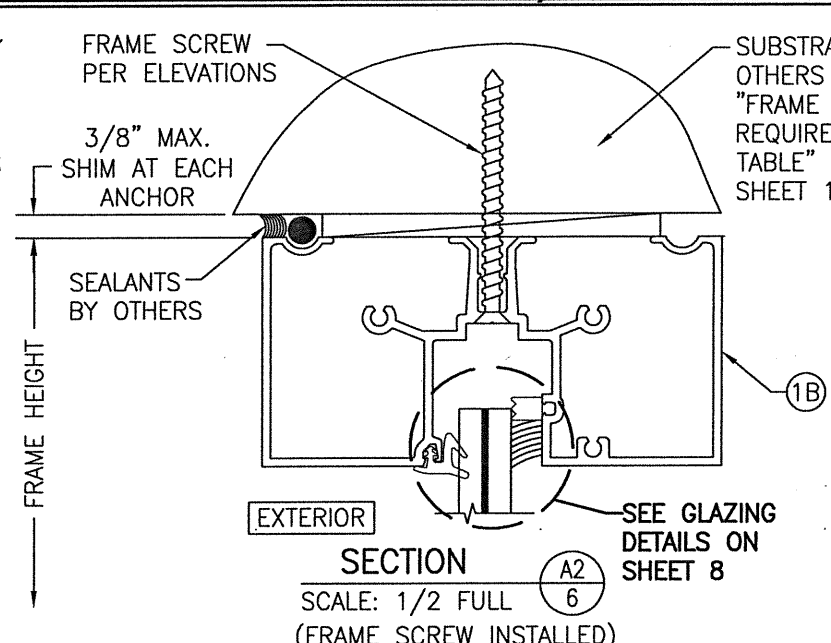
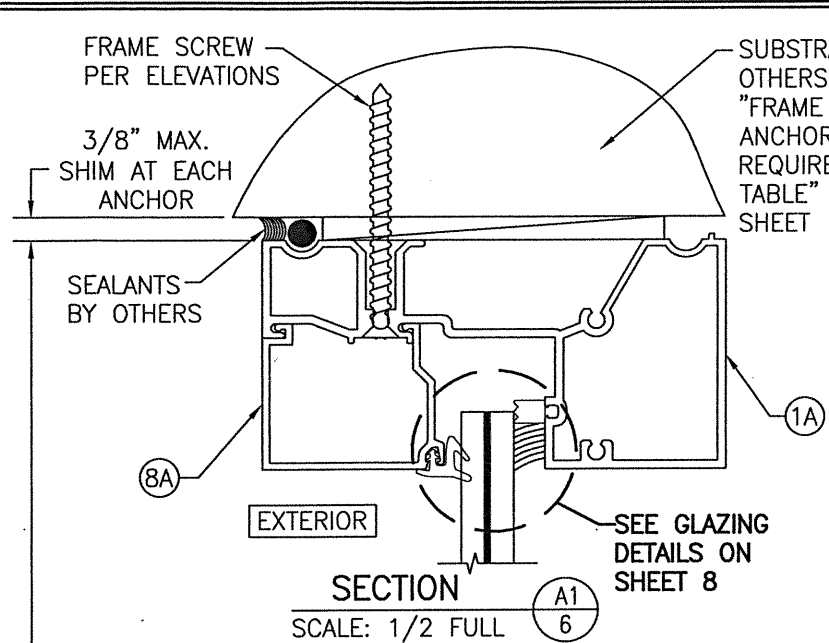
EXTERIOR ELEVATION
STORE FRONT FRAMING WITH DOORS & RECTANGULAR TRANSOM
(APPLICABLE WITH ALL SUBSTRATES)

(DOUBLE DOOR CONDITION SHOWN, SINGLE DOOR CONDITION ALSO APPLIES)

SCALE: 1/2"=1'-0"

DRAWN BY: W.R.M.		CHECKED BY: W.W.S.	
PLOT: 1=24		DATE: 03/19/13	
NO.	REVISION DESCRIPTION	BY	DATE
DRAWING TITLE IR500 ALUMINUM STORE FRONT SYSTEM - LARGE MISSILE IMPACT			
JOB INFORMATION: KAWNEER COMPANY, INC. 555 GUTHRIDGE COURT NORCROSS, GA 30092 770-449-5555			
CONSULTANTS W. W. SCHAEFER ENGINEERING & CONSULTING, P.A. (REG. NO. F-14980) 7480 150TH COURT NORTH PALM BEACH GARDENS, FL 33418 PHONE: 561-744-3424			
CERIFICATION MAR 08 2021 WARREN W. SCHAEFER, P.E. P.E. NO. 113497			
DRAWING NO. 1633T		REV. B	
SHEET NO. 5 OF 10			





WHEN THIS HEAD SECTION IS USED, THE ALLOWABLE DESIGN PRESSURE ON THE ENTIRE UNIT SHALL BE LIMITED TO MAXIMUM +/-65 PSF.

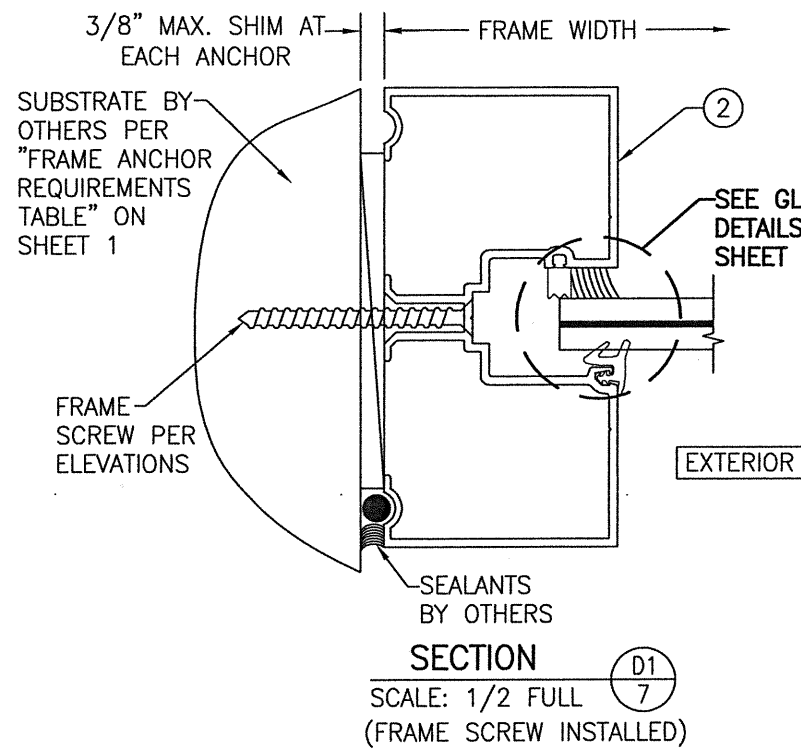
DRAWN BY: W.R.M.	CHECKED BY: W.W.S.
PLOT: 1-2	DATE: 03/19/13
DATE	
BY	
REVISION DESCRIPTION	
NO.	

JOB INFORMATION:
IR500 ALUMINUM STORE FRONT SYSTEM - LARGE MISSILE IMPACT
KAWNEER COMPANY, INC.
555 GUTHRIDGE COURT
NORCROSS, GA 30092
770-449-5555

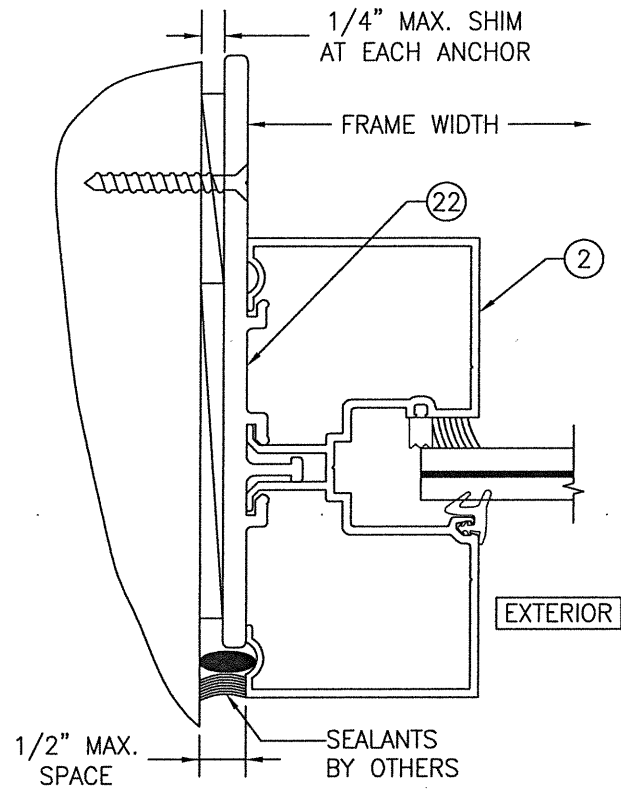
CONSULTANTS
W. W. SCHAEFER ENGINEERING & CONSULTING, P.A. (REG. NO. F-14980)
7480 150TH COURT NORTH
PALM BEACH GARDENS, FL 33418
PHONE: 561-744-3424

CERTIFICATION
113497
MAR 08 2013
WARREN W. SCHAEFER, P.E.
P.E. NO. 113497

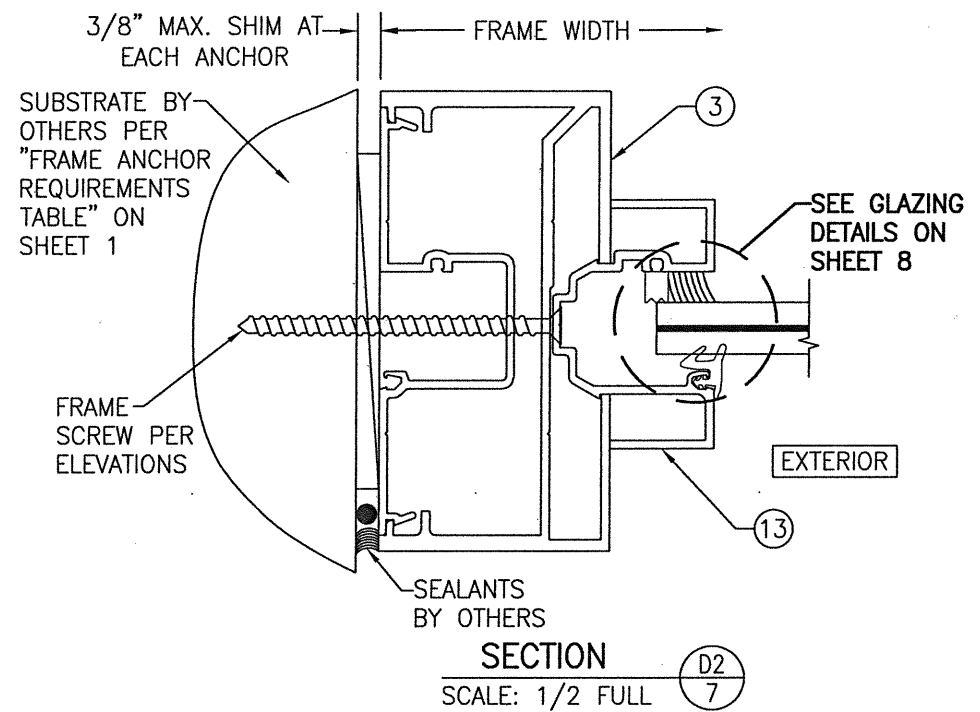
DRAWING NO. 1633T
REV. B
SHEET NO. 6 OF 10



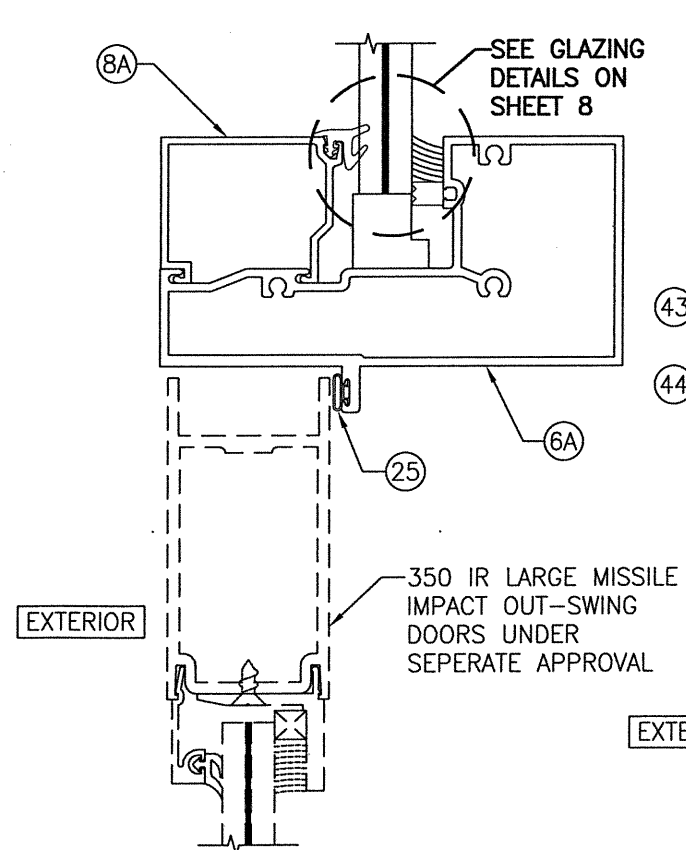
SECTION D1
 SCALE: 1/2 FULL
 (FRAME SCREW INSTALLED)



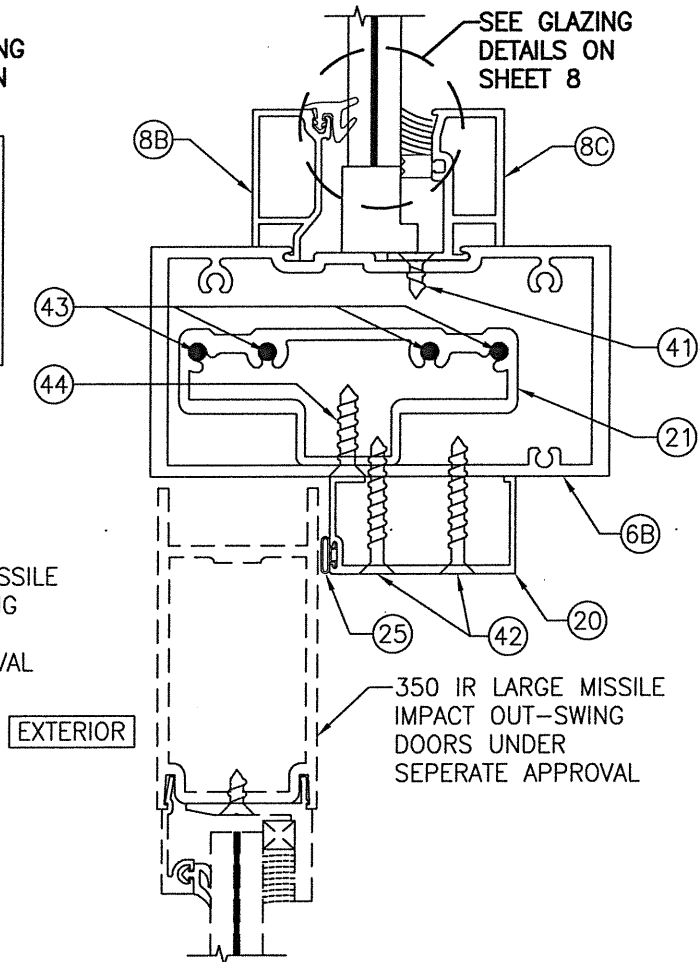
ALTERNATE SECTION D1
 SCALE: 1/2 FULL
 (STRAP ANCHOR INSTALLED)



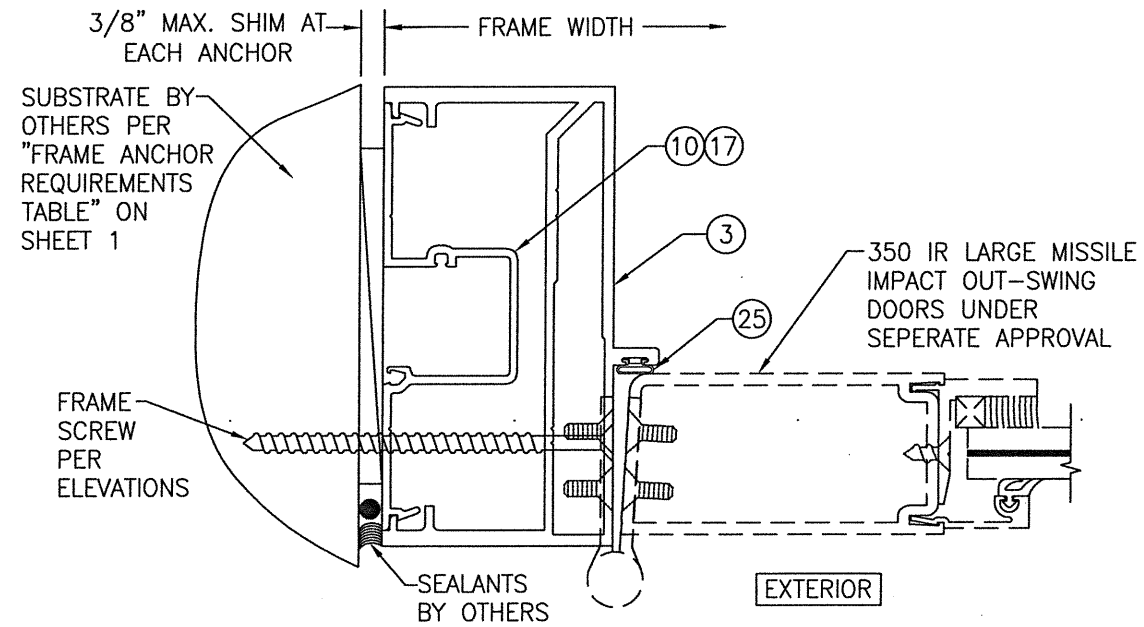
SECTION D2
 SCALE: 1/2 FULL



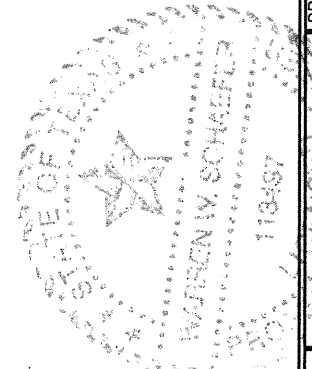
SECTION E1
 SCALE: 1/2 FULL



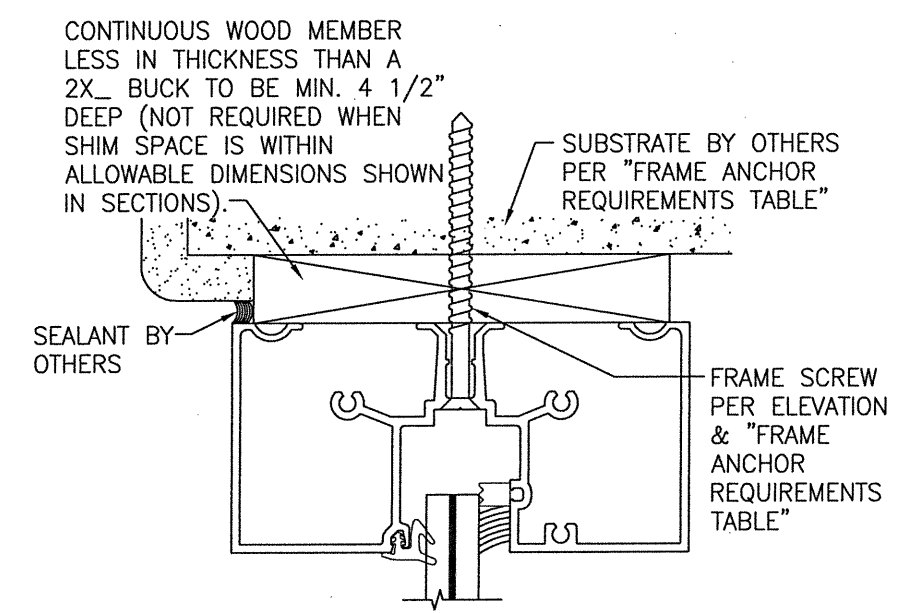
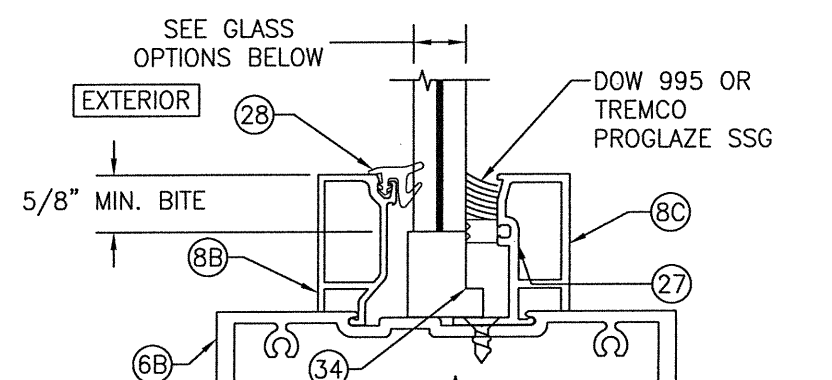
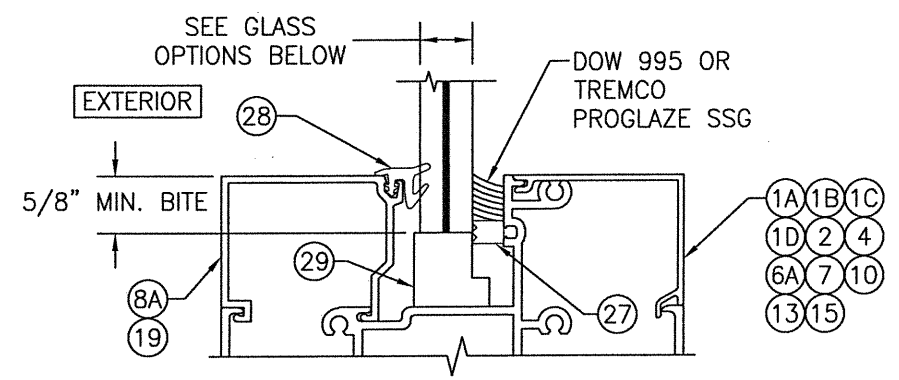
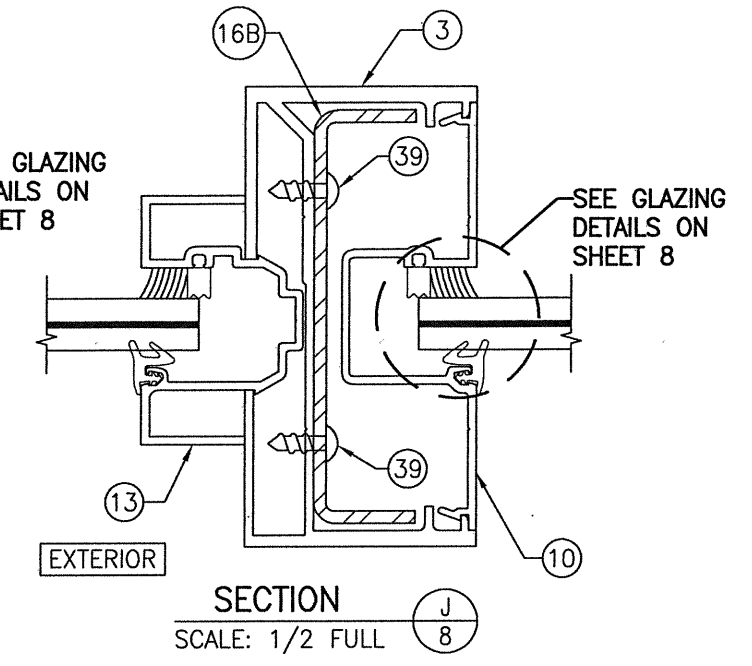
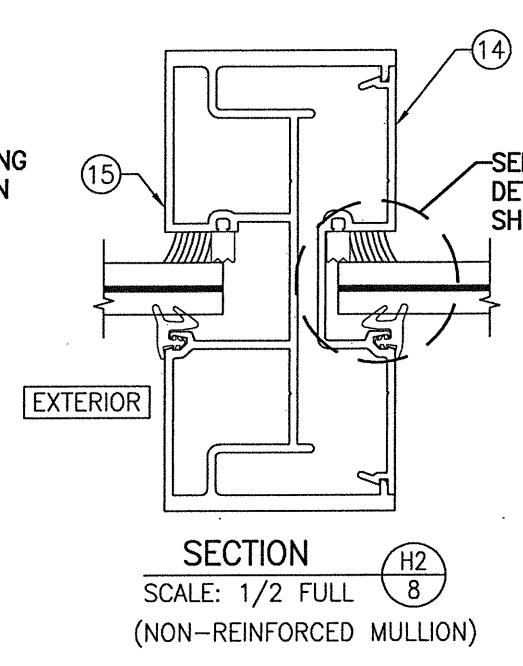
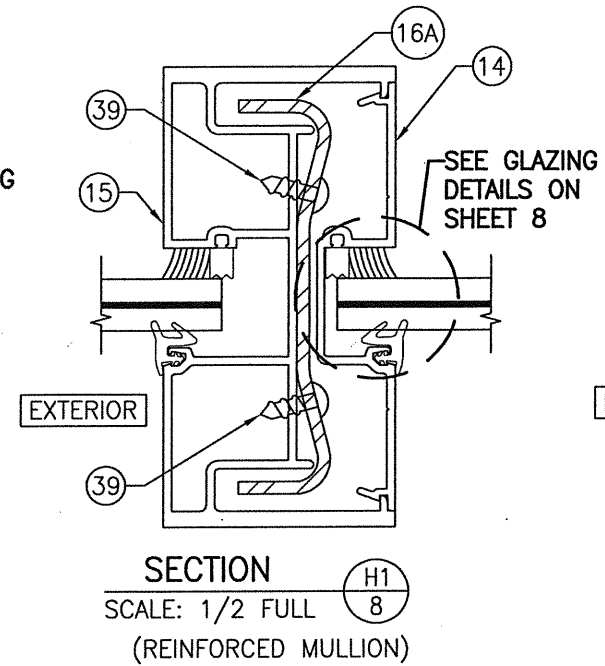
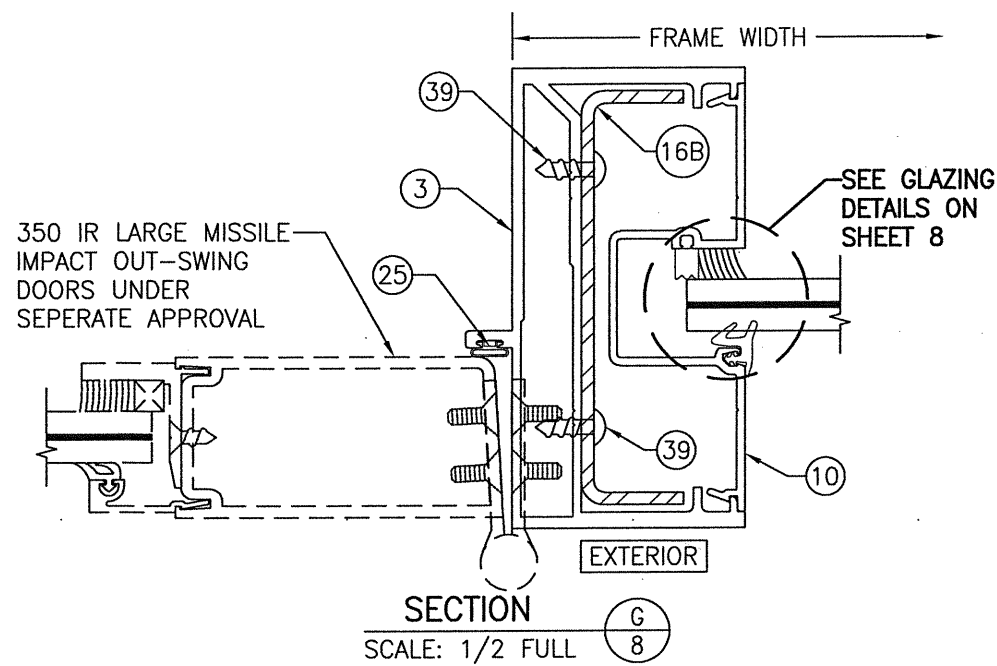
SECTION E2
 SCALE: 1/2 FULL



SECTION F
 SCALE: 1/2 FULL

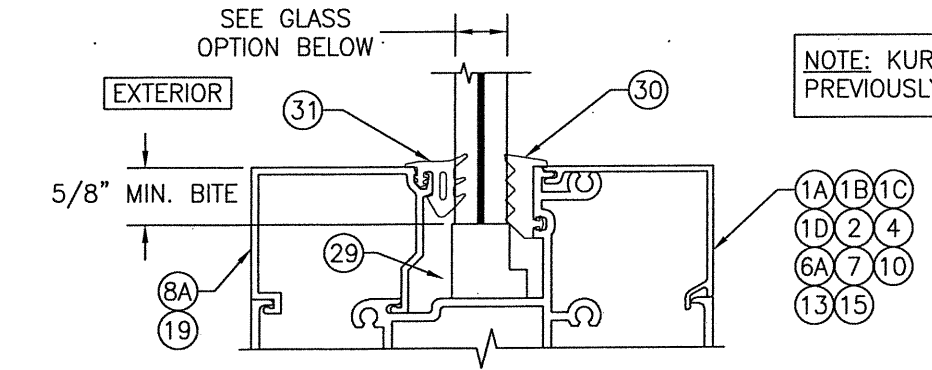


DRAWN BY: W.R.M.	CHECKED BY: W.W.S.	PLOT: 1=2	DATE: 03/19/13
NO.	REVISION DESCRIPTION	BY	DATE
DRAWING TITLE IR500 ALUMINUM STORE FRONT SYSTEM - LARGE MISSILE IMPACT			
JOB INFORMATION:			
KAWNEER COMPANY, INC. 555 GUTHRIDGE COURT NORCROSS, GA 30092 770-449-5555			
CONSULTANTS W. W. SCHAEFER ENGINEERING & CONSULTING, P.A. (REG. NO. F-14980) 7480 150TH COURT NORTH PALM BEACH GARDENS, FL 33418 PHONE: 561-744-3424			
CERTIFICATION MAR 08 2021 WARREN W. SCHAEFER P.E. NO. 113497			
DRAWING NO. 1633T		REV. B	
SHEET NO. 7 OF 10			



GLASS OPTIONS (WET GLAZED):

- OPTION 1: 9/16" THICK LAMINATED GLASS (1/4" HT. ST./0.09 EASTMAN CHEM. CO. SAFLEX/1/4" HT. ST.)
- OPTION 2: 9/16" THICK LAMINATED GLASS (1/4" HT. ST./0.09 KURARAY BUTICITE PVB/1/4" HT. ST.)
- OPTION 3: 9/16" THICK LAMINATED GLASS (1/4" HT. ST./0.09 KURARAY SG/1/4" HT. ST.)
- OPTION 4: 9/16" THICK LAMINATED GLASS (1/4" HT. ST./0.10 EASTMAN CHEM. CO. SAFLEX HP/1/4" HT. ST.)

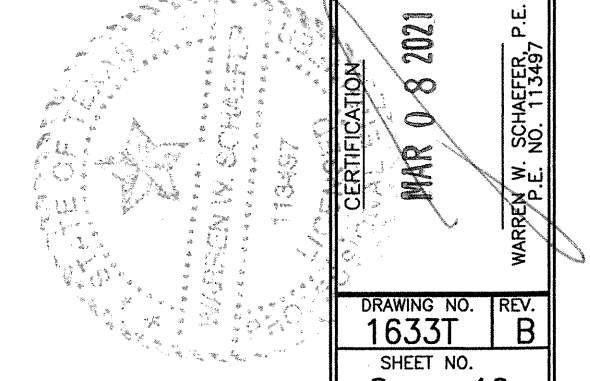


NOTE: KURARAY WAS PREVIOUSLY DUPONT.

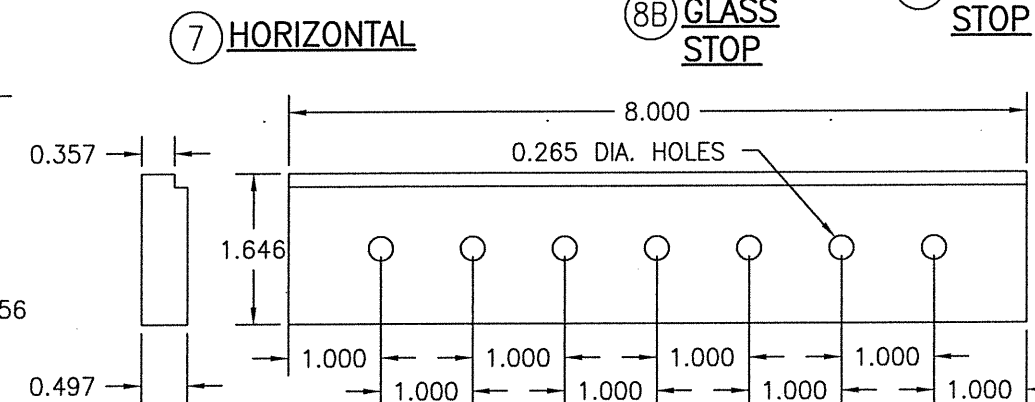
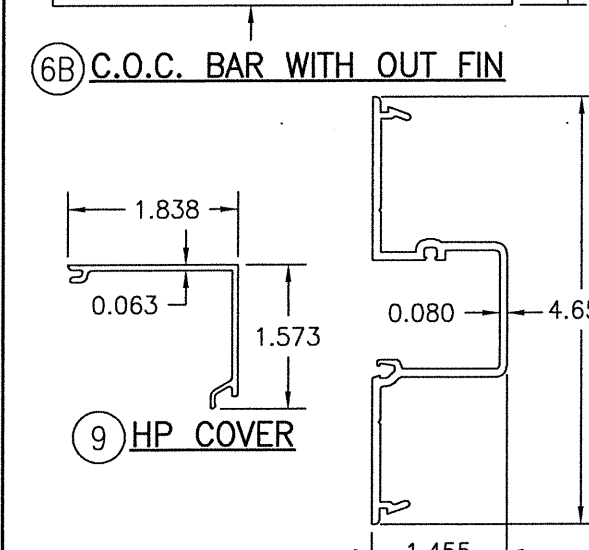
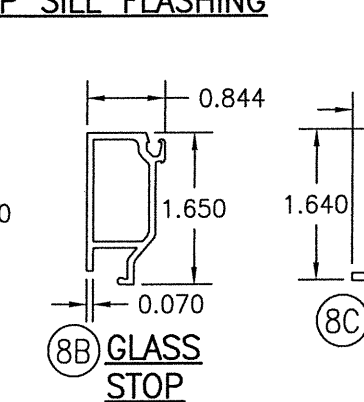
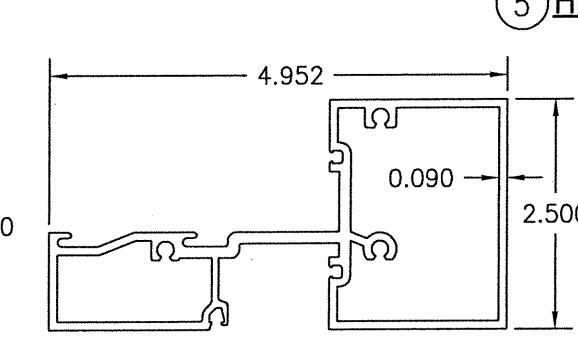
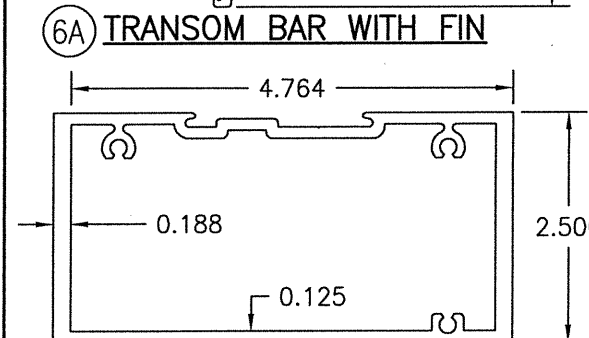
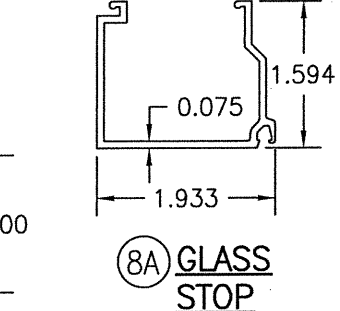
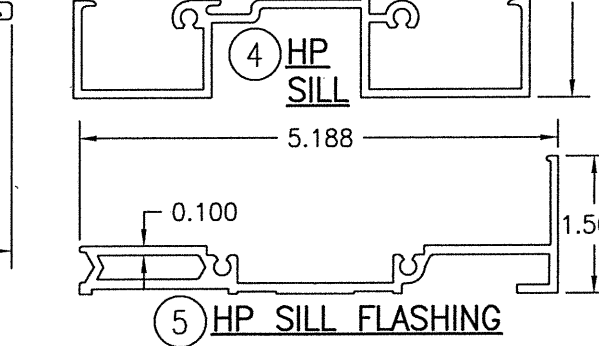
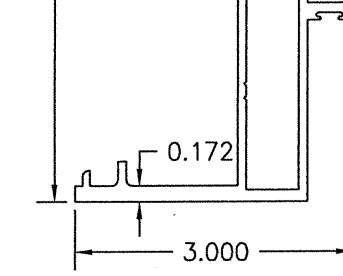
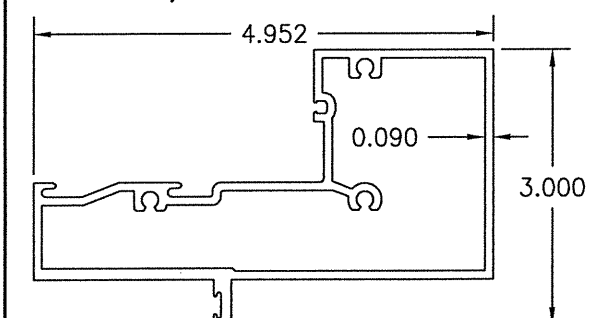
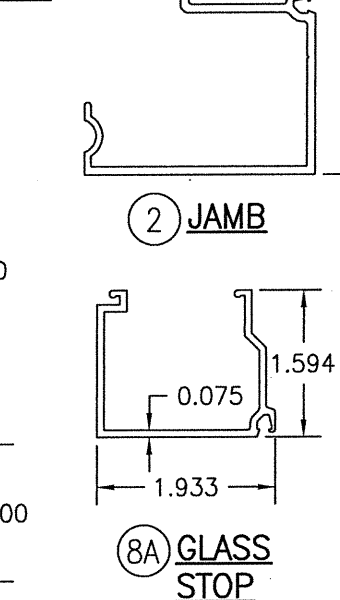
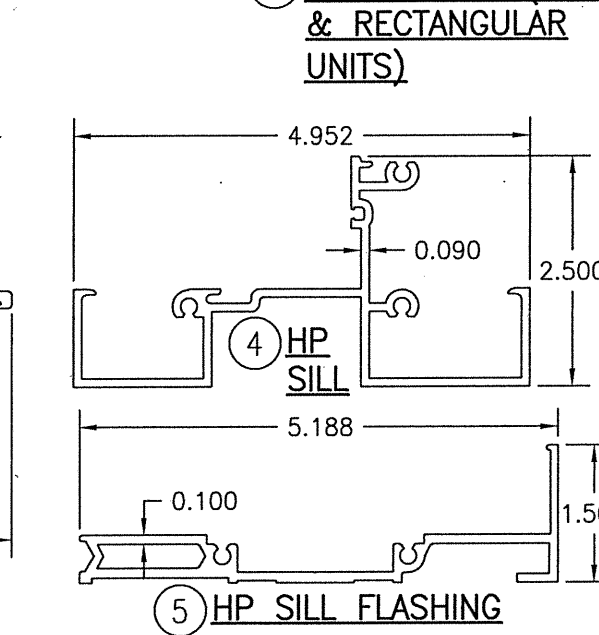
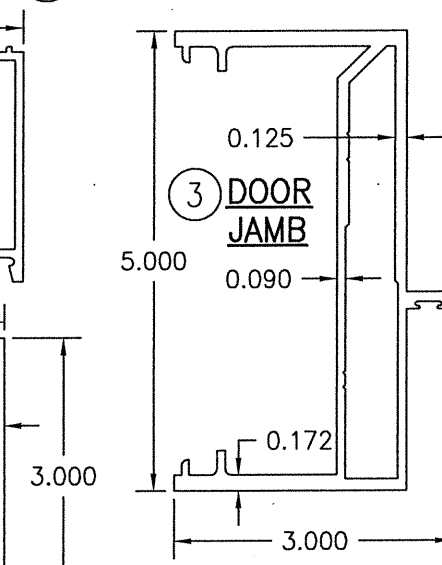
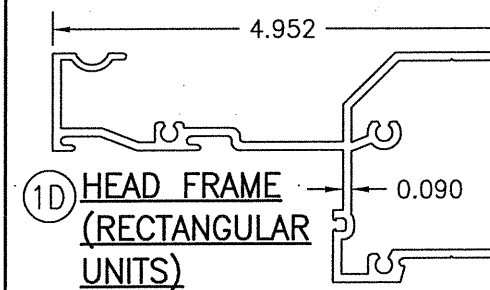
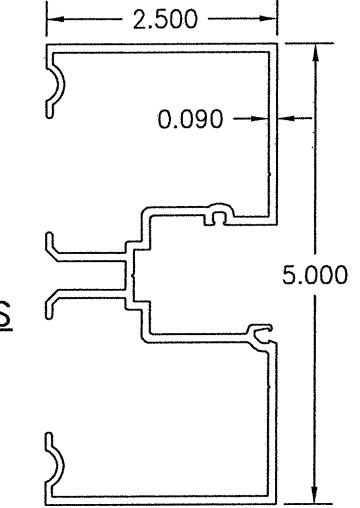
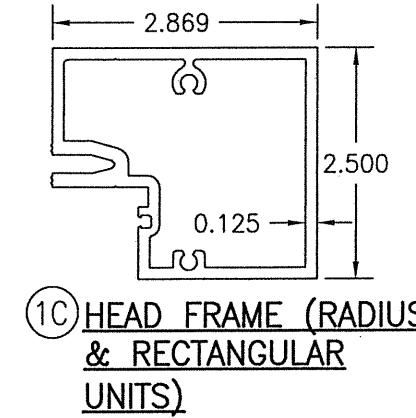
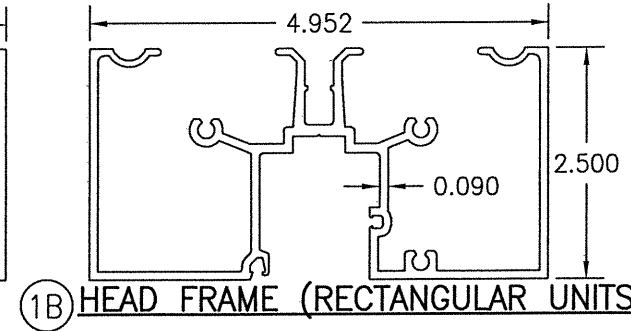
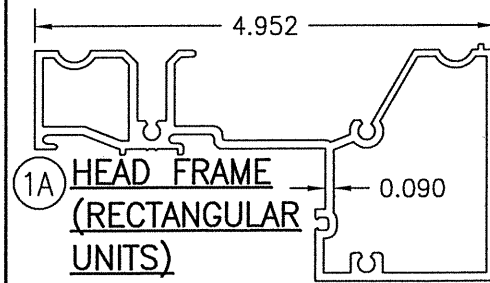
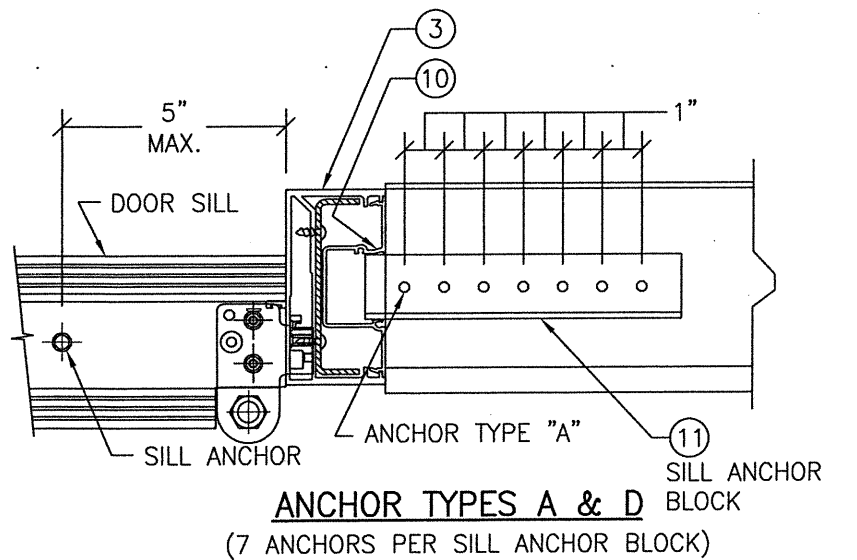
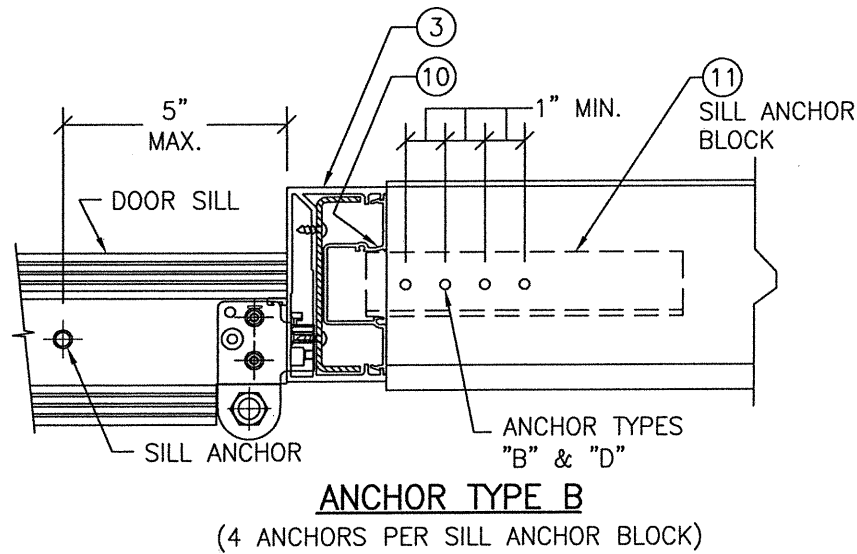
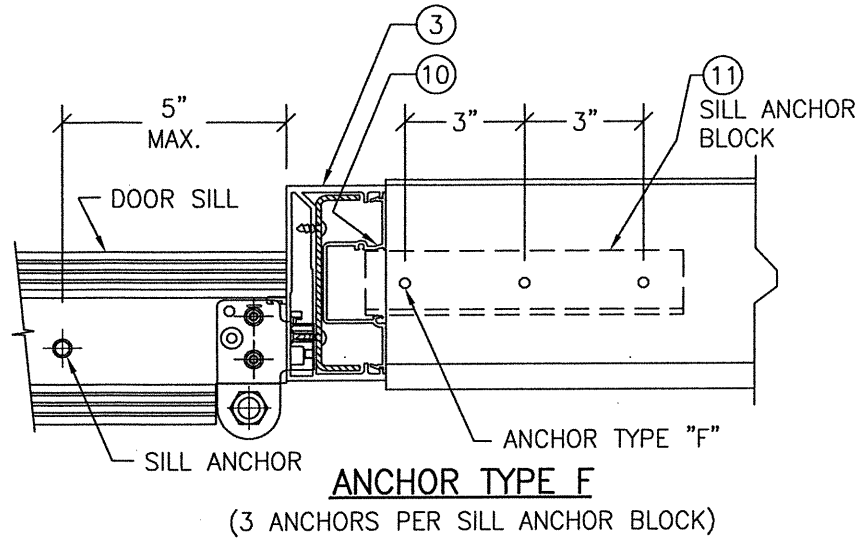
- GLASS OPTION (DRY GLAZED):**
- OPTION 5: 9/16" THICK LAMINATED GLASS (1/4" HT. ST./0.09 KURARAY SG/1/4" HT. ST.)

* HEAD SECTION SHOWN WITH HEAD FRAME PART #1B; SILL & SIDES WITH OTHER APPLICABLE FRAME PARTS MAY BE INSTALLED THE SAME (NOT APPLICABLE WITH STRAP ANCHOR INSTALLATIONS).
(FOR DETAIL NOT SHOWN, SEE OTHER SECTIONS)

DRAWN BY: W.R.M.		CHECKED BY: W.W.S.	
PLOT: 1-2		DATE: 03/19/13	
NO.	REVISION DESCRIPTION	BY	DATE
JOB INFORMATION:			
IR500 ALUMINUM STORE FRONT SYSTEM - LARGE MISSILE IMPACT		KAWNEER COMPANY, INC. 555 GUTHRIDGE COURT NORCROSS, GA 30092 770-449-5555	
CONSULTANTS		W. W. SCHAEFER ENGINEERING & CONSULTING, P.A. (REG. NO. F-14980) 7480 150TH COURT NORTH PALM BEACH GARDENS, FL 33418 PHONE: 561-744-3424	
DRAWING TITLE			
IR500 ALUMINUM STORE FRONT SYSTEM - LARGE MISSILE IMPACT			
DRAWING NO. 1633T			
SHEET NO. 8 OF 10			
REV. B			

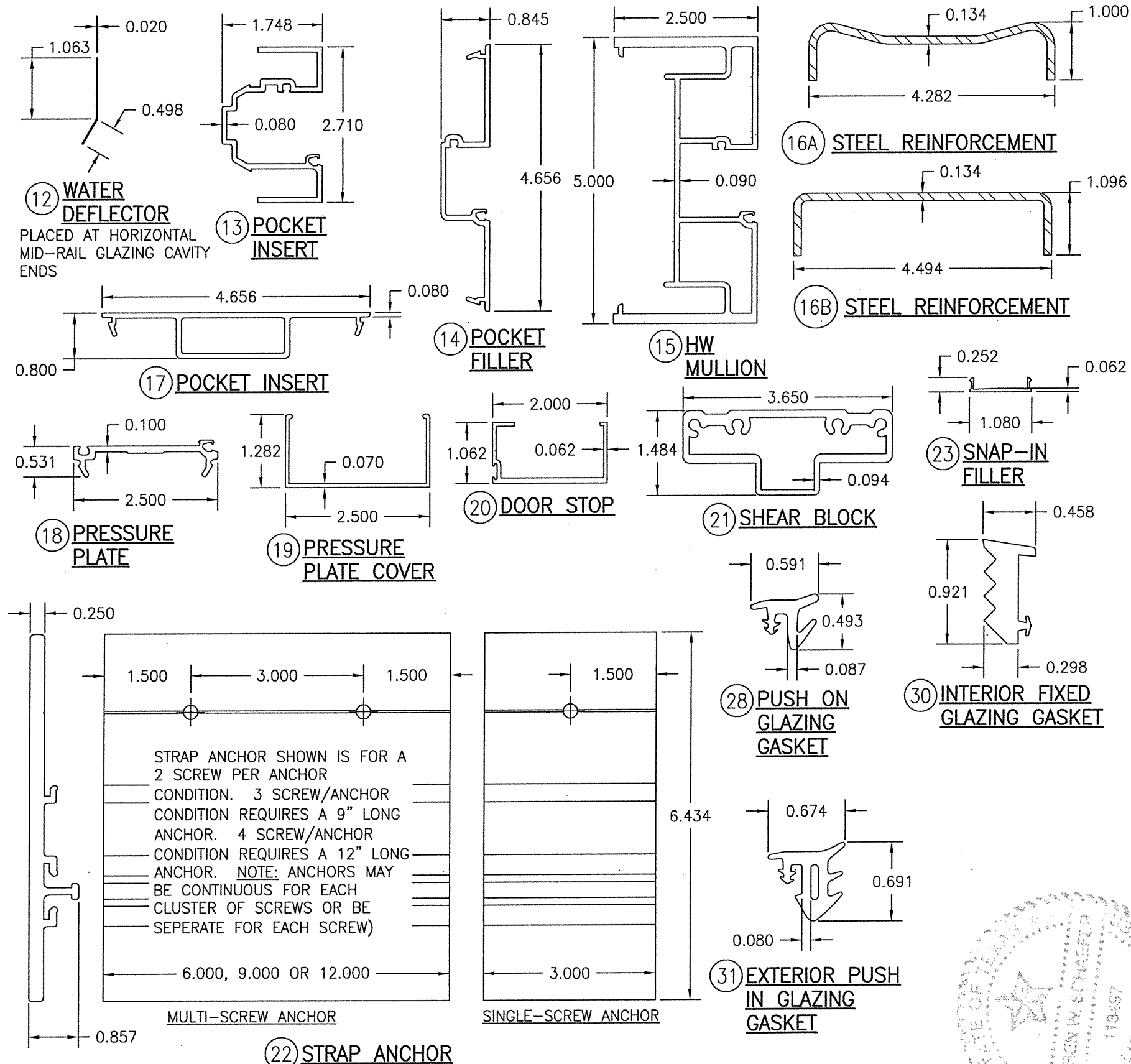


MULLION END CONNECTION DETAILS AT VERTICAL MULLIONS ALONG SIDE DOORS
(TYPICAL AT SILL ONLY)



DRAWN BY: W.R.M.	CHECKED BY: W.W.S.
PLOT: 1=2	DATE: 03/19/13
DATE	BY
NO.	REVISION DESCRIPTION
DRAWING TITLE IR500 ALUMINUM STORE FRONT SYSTEM - LARGE MISSILE IMPACT	
JOB INFORMATION: KAWNEER COMPANY, INC. 555 GUTHRIDGE COURT NORCROSS, GA 30092 770-449-5555	
CONSULTANTS W. W. SCHAEFER ENGINEERING & CONSULTING, P.A. (REG. NO. F-14980) 7480 150TH COURT NORTH PALM BEACH GARDENS, FL 33418 PHONE: 561-744-3424	
CERTIFICATION	MAR 08 2013
WARREN W. SCHAEFER, P.E. P.E. NO. 113497	
DRAWING NO. 1633T	REV. B
SHEET NO. 9 OF 10	

ITEM #	ITEM DESCRIPTION	MANUFACTURER/NOTES
PARTS		
1A	HEAD FRAME (RECTANGULAR UNITS)	6063-T6 ALUMINUM
1B	HEAD FRAME (RECTANGULAR UNITS)	6063-T6 ALUMINUM
1C	HEAD FRAME (RADIUS & RECTANGULAR UNITS)	6063-T6 ALUMINUM
1D	HEAD FRAME (RECTANGULAR UNITS)	6063-T6 ALUMINUM
2	JAMB	6063-T6 ALUMINUM
3	DOOR JAMB	6063-T6 ALUMINUM
4	HP SILL	6063-T6 ALUMINUM
5	HP SILL FLASHING	6063-T6 ALUMINUM
6A	TRANSOM BAR WITH FIN	6063-T6 ALUMINUM
6B	C.O.C. TRANSOM BAR	6063-T6 ALUMINUM
7	HORIZONTAL	6063-T6 ALUMINUM
8A	GLASS STOP	6063-T6 ALUMINUM
8B	GLASS STOP	6063-T6 ALUMINUM
8C	GLASS STOP	6063-T6 ALUMINUM
9	HP COVER	6063-T6 ALUMINUM
10	DEEP POCKET FILLER	6063-T6 ALUMINUM
11	ANCHOR BLOCK AT DOOR JAMB	6063-T6 ALUMINUM
12	WATER DEFLECTOR	6063-T6 ALUMINUM
13	POCKET INSERT	6063-T6 ALUMINUM
14	POCKET FILLER	6063-T6 ALUMINUM
15	HW MULLION	6063-T6 ALUMINUM
16A	STEEL REINF.	A36 STEEL
16B	STEEL REINF.	A36 STEEL
17	POCKET INSERT	6063-T6 ALUMINUM
18	PRESSURE PLATE	6063-T6 ALUMINUM
19	PRESSURE PLATE COVER	6063-T6 ALUMINUM
20	DOOR STOP	6063-T6 ALUMINUM
21	SHEAR BLOCK	6063-T6 ALUMINUM (PART #450-140)
22	STRAP ANCHOR	6063-T6 ALUMINUM
23	SNAP-IN FILLER	6063-T6 ALUMINUM
SEALS AND SEALANTS		
25	DOOR BULB WEATHERING	ALCRYN
26	SILL TO FLASHING GASKET	CCN SPONGE
27	SLIDE IN SPACER	SANTOPRENE (PART #127-012)
28	STANDARD PUSH ON GLAZING GASKET	EPDM (DUROMETER = 70) (PART #027-074)
29	SETTING BLOCK	EPDM
30	INTERIOR FIXED GLAZING GASKET	EPDM (DUROMETER = SPONGE) (PART #127-146)
31	EXTERIOR PUSH IN GLAZING GASKET	EPDM (DUROMETER = 70) (PART #127-147)
32	GASKET	EPDM (DUROMETER = 70)
33	THERMAL SEPARATOR	EPDM (DUROMETER = 70)
34	SETTING BLOCK	EPDM
FASTENERS		
38	NO. 12 X 7/16" S.S. PHTF SCREW	1.5" & 4.5" FROM ENDS & 16 1/4" MAX. O.C.
39	NO. 12 X 5/8" S.S. PHTF SCREW	4" FROM ENDS (2 ROWS)
40	1/4" X 1" S.S. HWHTF SCREW	3" FROM ENDS & MAX. 9" O.C.
41	NO. 10 X 1/2" S.S. FHTF SCREW	3" FROM ENDS & MAX. 18" O.C.
42	NO. 10 X 1 5/8" S.S. FHTF SCREW	1" FROM ENDS; 4 GROUPED AT MID-SPAN; 16" MAX. BETWEEN
43	NO. 12 X 1 7/8" FHTF SCREW	4 PER SHEAR BLOCK
44	NO. 12 X 1" FHTF SCREW	3 PER SHEAR BLOCK



DRAWN BY: W.R.M.	CHECKED BY: W.W.S.
PLOT: 1=2	DATE: 03/19/13
DATE	BY
REVISION DESCRIPTION	NO.
JOB INFORMATION:	
IR500 ALUMINUM STORE FRONT SYSTEM - LARGE MISSILE IMPACT	
KAWNEER COMPANY, INC. 555 GUTHRIE COURT NORCROSS, GA 30092 770-449-5555	
CONSULTANTS W. W. SCHAEFER ENGINEERING & CONSULTING, P.A. (REG. NO. F-14980) 7480 150TH COURT NORTH PALM BEACH GARDENS, FL 33418 PHONE: 561-744-3424	
CERTIFICATION	WARREN W. SCHAEFER P.E. NO. 113497
MAR 08 2021	
DRAWING NO. 1633T	REV. B
SHEET NO. 10 OF 10	