

PRODUCT:

Resistor 3000 ALUMINUM STOREFRONT WALL-LMI

Resistor
PRODUCT SERIES

REVN	DATE/REMARKS
Rev.3	ADD NEW GLASS INTERLAYER

ENGINEER:



MCY ENGINEERING, INC.
GLAZING CONSULTANT

12781 MIRAMAR PARKWAY #301
MIRAMAR, FL 33027
P: 305-271-0117
Email: MCY@MCYEngineering.com
www.MCYEngineering.com

STAMP:



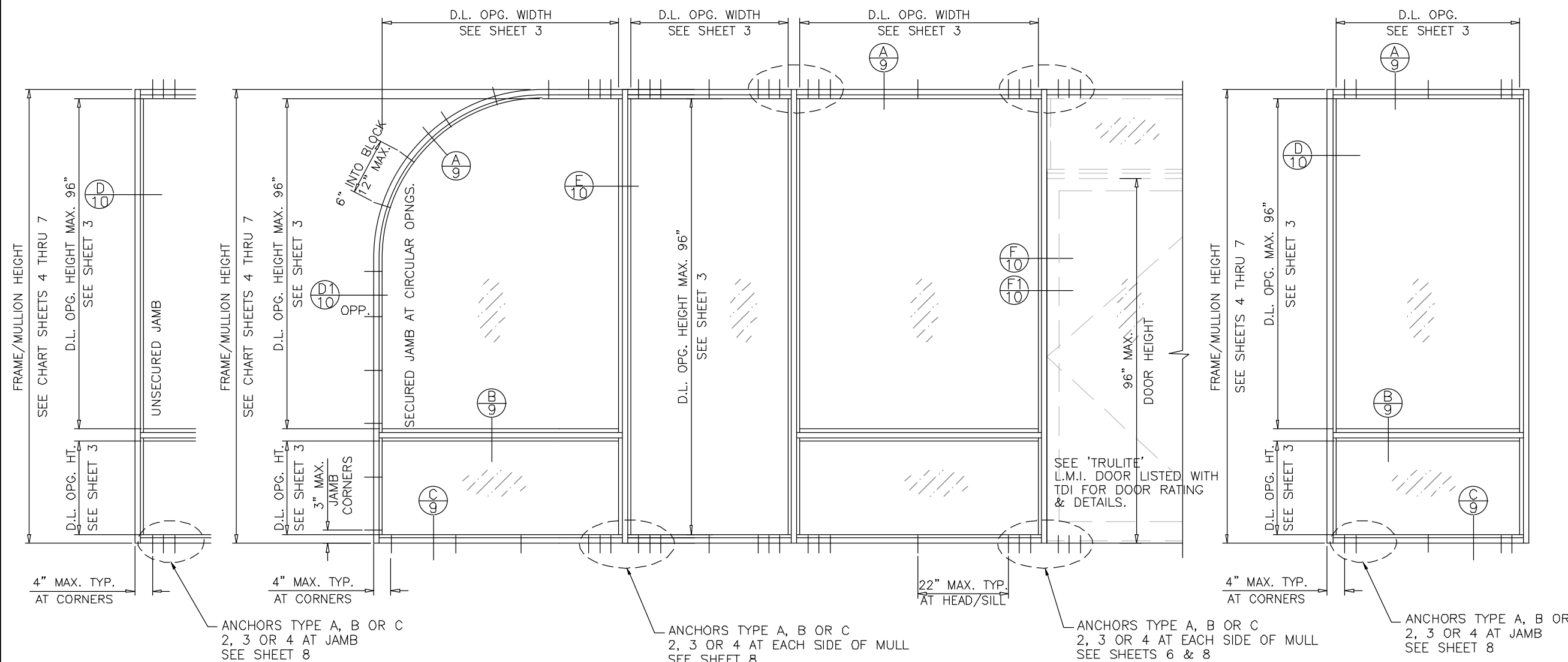
September 6th, 2022

PRODUCT CONTROL APPROVAL:

DRAWN: James
DATE: 08/29/22
DWG: TAD14-01

DRAWING No:

1 OF 11



TYPICAL ELEVATIONS

IMPACT WALL 3000/L-3000 ALUMINUM STOREFRONT SYSTEM INSIDE OR OUTSIDE GLAZED

WINDOW WALL SYSTEM IS RATED FOR LARGE & SMALL MISSILE IMPACT. SHUTTERS ARE NOT REQUIRED.

THIS SYSTEM MAY BE USED IN CONJUNCTION WITH TEXAS DEPARTMENT OF INSURANCE APPROVED ENTRANCE DOORS.

CODE REQUIREMENTS FOR SAFEGUARDS MUST BE OBSERVED.

THIS PRODUCT HAS BEEN DESIGNED AND TESTED TO COMPLY WITH THE REQUIREMENTS OF THE 2018 INTERNATIONAL BUILDING CODE AND 2018 INTERNATIONAL RESIDENTIAL CODE.

ULTIMATE DESIGN LOAD OBTAINED FROM ASCE 7-16, MULTIPLY BY 0.6, SHALL BE LESS THAN OR EQUAL TO MAX. DESIGN LOAD IN THE DOCUMENT.

WOOD BUCKS BY OTHERS, MUST BE ANCHORED PROPERLY TO TRANSFER LOADS TO THE STRUCTURE.

ANCHORS SHALL BE AS LISTED, SPACED AS SHOWN ON DETAILS, ANCHORS EMBEDMENT TO BASE MATERIAL SHALL BE BEYOND WALL DRESSING OR STUCCO.

ANCHORING OR LOADING CONDITIONS NOT SHOWN IN THESE DETAILS ARE NOT PART OF THIS APPROVAL.

A LOAD DURATION INCREASE IS USED IN DESIGN OF ANCHORS INTO WOOD ONLY.

MATERIALS INCLUDING BUT NOT LIMITED TO STEEL/METAL SCREWS, THAT COME INTO CONTACT WITH OTHER DISSIMILAR MATERIALS SHALL MEET THE REQUIREMENTS OF THE 2018 INTERNATIONAL BUILDING CODE AND 2018 INTERNATIONAL RESIDENTIAL CODE SECTION AS APPLICABLE.

INSTRUCTIONS:

USE CHARTS AS FOLLOWS.

- STEP 1 DETERMINE DESIGN WIND LOAD REQUIREMENT BASED ON WIND VELOCITY, BLDG. HEIGHT, WIND ZONE USING APPLICABLE ASCE 7-16 STANDARD.
- STEP 2 SEE CHARTS ON SHEET 3 FOR DESIGN LOAD CAPACITY OF DESIRED GLASS SIZE.
- STEP 3 CHECK MULLION CAPACITY FOR A GIVEN SPACING AND HEIGHT USING CHARTS ON SHEET 4 THRU 7 THE CAPACITY SHOULD EXCEED THE DESIGN LOAD.
- STEP 4 USING CHART ON SHEET 8 SELECT ANCHOR OPTION WITH DESIGN RATING MORE THAN DESIGN LOAD SPECIFIED IN STEP 1 ABOVE.
- STEP 5 THE LOWEST VALUE RESULTING FROM STEPS 2, 3 AND 4 SHALL APPLY TO ENTIRE SYSTEM.

LIMITATIONS OF USE

- A) THIS PRODUCT EVALUATION DOCUMENT (P.E.D.) PREPARED BY THIS ENGINEER IS GENERIC AND DOES NOT PROVIDE INFORMATION FOR A SITE SPECIFIC PROJECT; i.e. WHERE THE SITE CONDITIONS DEVIATE FROM THE P.E.D.
- B) CONTRACTOR TO BE RESPONSIBLE FOR THE SELECTION, PURCHASE AND INSTALLATION OF THIS PRODUCT BASED ON THIS PRODUCT EVALUATION PROVIDED HE/SHE DOES NOT DEVIATE FROM THE CONDITIONS DETAILED ON THIS DOCUMENT.
- C) THIS PRODUCT EVALUATION DOCUMENT WILL BE CONSIDERED INVALID IF ALTERED BY ANY MEANS.
- D) SITE SPECIFIC PROJECTS SHALL BE PREPARED BY A TEXAS REGISTERED ENGINEER OR ARCHITECT WHICH WILL BECOME THE ENGINEER OF RECORD (E.O.R.) FOR THE PROJECT AND WHO WILL BE RESPONSIBLE FOR THE PROPER USE OF THE P.E.D.
- E) THIS P.E.D. SHALL BEAR THE DATE AND ORIGINAL SEAL AND SIGNATURE OF THE PROFESSIONAL ENGINEER OF RECORD THAT PREPARED IT.

PRODUCT COMPLIES WITH REQUIREMENTS OF ANSI Z97.1.

PRODUCT:

Resistor 3000 ALUMINUM STOREFRONT WALL-LMI

Resistor
PRODUCT SERIES

REV#	DATE/REMARKS
Rev.3	ADD NEW GLASS INTERLAYER

ENGINEER:



MCY ENGINEERING, INC.
GLAZING CONSULTANT

12781 MIRAMAR PARKWAY #301
MIRAMAR, FL 33027
P: 305-271-0117
Email: MCY@MCYEngineering.com
www.MCYEngineering.com

STAMP:



September 6th, 2022

PRODUCT CONTROL APPROVAL:

DRAWN: James

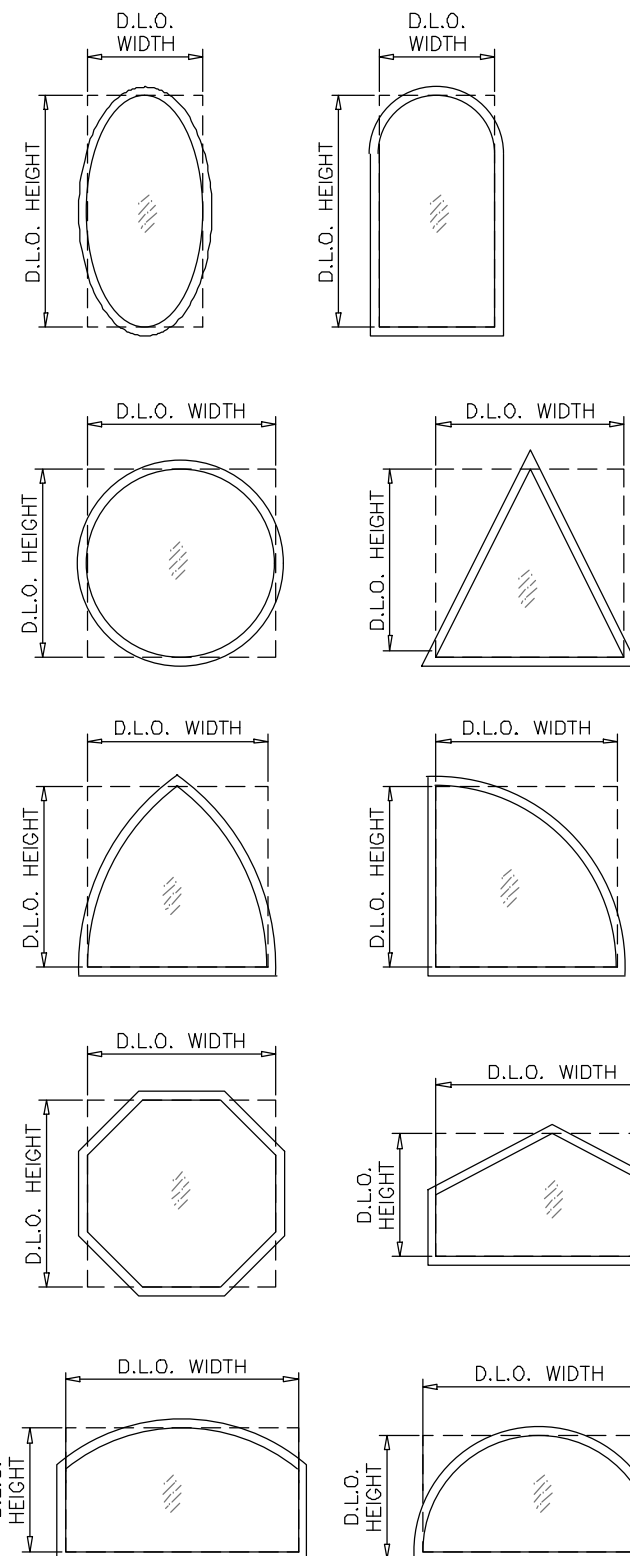
DRAWING No:

DATE: 08/29/22

2 OF 11

DWG: TAD14-01

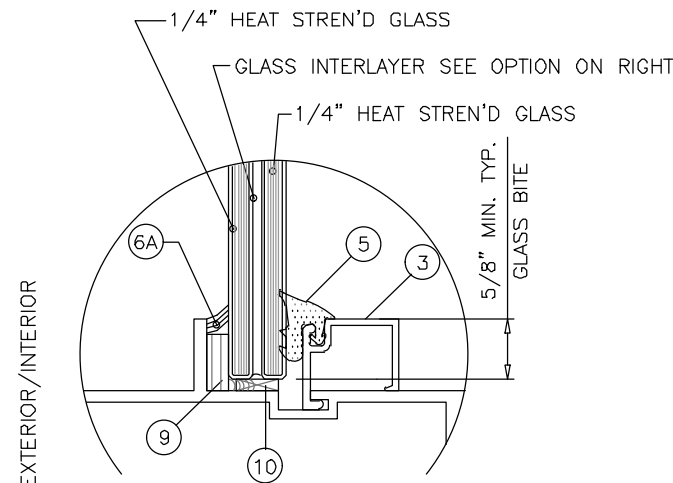
GLAZING OPTION



ALLOWABLE LOADS FOR ALTERNATE SHAPES AS SHOWN ABOVE OR SIMILAR CAN BE VERIFIED BY INSCRIBING PICTURE WINDOW SHAPE WITHIN SQUARE OR RECTANGLE AS SHOWN IN DOTTED LINES AND OBTAINING ALLOWABLE LOADS FROM THOSE SHAPES. SINGLE LITES MAY BE INSTALLED VERTICALLY AS SHOWN ABOVE OR HORIZONTALLY.

FOR ALTERNATE SHAPES LIMIT MAX. LOADS TO ±90.0 PSF

SEE SHEET 3 FOR D.L.O. WIDTHS AND HEIGHTS.
USE ANCHOR TYPES A, B OR C AT 4" FROM FRAME ENDS AND 12" O.C. MAX. SPACING.



LAMINATED GLASS
9/16" NOMINAL OVERALL

LAMINATED GLASS INTERLAYER TYPE:

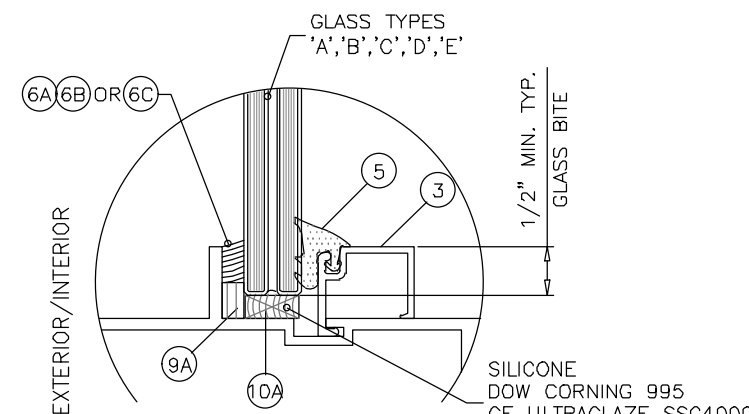
TYPE "A": 0.090" SAFLEX PVB CLEAR AND COLOR GLASS INTERLAYERS BY 'EASTMAN CHEMICAL COMPANY'

TYPE "B": 0.100" SAFLEX HP INTERLAYERS BY 'EASTMAN CHEMICAL COMPANY'

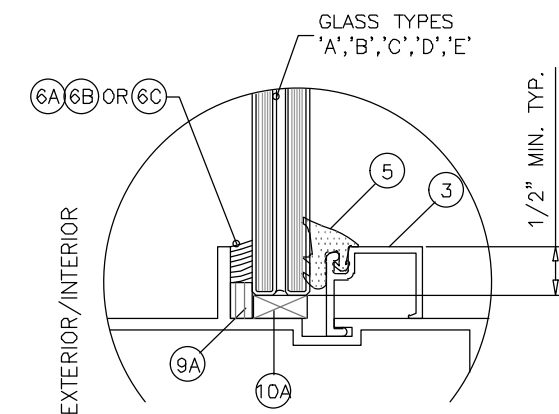
TYPE "C": 0.090" KURARAY SENTRYGLAS INTERLAYER BY 'KURARAY AMERICA, INC.'

TYPE "D": 0.09" EVERLAM™ LAM50 PVB GLASS INTERLAYER

TYPE "E": 0.09" EVERLAM™ SUPER TOUGH PVB INTERLAYER



ALTERNATE GLAZING DETAIL #1



ALTERNATE GLAZING DETAIL #2

FOR GLAZING DETAIL #2 ONLY
LIMIT MAX. LOADS TO ±50.0 PSF
LIMIT MAX. GLASS AREA TO 29 SQ. FT.

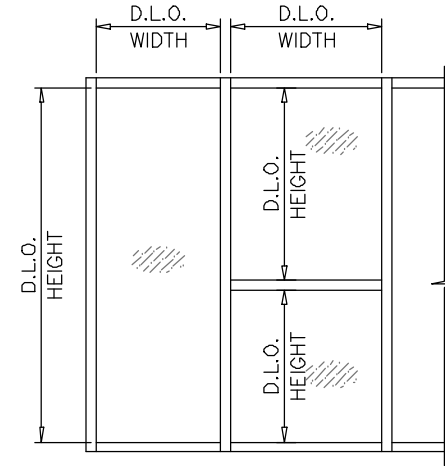
SILICONE SEALANT OPTIONS:
(6A) DOW CORNING 995
(6B) GE ULTRAGLAZE SSG4000
(6C) TREMCO PROGLAZE SSG

DESIGN LOAD CAPACITY - PSF						
NOMINAL DIMS.		GLASS TYPE 'A'	GLASS TYPE 'B'	GLASS TYPE 'C'	GLASS TYPE 'D'	GLASS TYPE 'E'
D.L.O. WIDTH	D.L.O. HEIGHT	EXT. (+) INT. (-)	EXT. (+) INT. (-)	EXT. (+) INT. (-)	EXT. (+) INT. (-)	EXT. (+) INT. (-)
36"	87"	87.0	100.0	100.0	+65/-75	+70/-85
39"		87.0	100.0	100.0	+65/-75	+70/-85
41.5"		87.0	100.0	100.0	+65/-75	+70/-85
45"		87.0	100.0	100.0	-	+70/-85
48"		87.0	100.0	100.0	-	+70/-85
51"		87.0	100.0	100.0	-	-
54"		87.0	100.0	100.0	-	-
57"		87.0	100.0	100.0	-	-
60"		87.0	100.0	100.0	-	-
63"		87.0	100.0	100.0	-	-
66"		87.0	100.0	100.0	-	-
69"		87.0	100.0	100.0	-	-
72"		87.0	100.0	100.0	-	-
36"		90"	87.0	100.0	100.0	+65/-75
39"	87.0		100.0	100.0	+65/-75	+70/-85
42"	87.0		100.0	100.0	-	+70/-85
45"	87.0		100.0	100.0	-	+70/-85
48"	87.0		100.0	100.0	-	-
51"	87.0		100.0	100.0	-	-
54"	87.0		100.0	100.0	-	-
57"	87.0		100.0	100.0	-	-
60"	87.0		100.0	100.0	-	-
63"	87.0		100.0	100.0	-	-
66"	87.0		100.0	100.0	-	-
69"	87.0		100.0	100.0	-	-
72"	87.0		100.0	100.0	-	-
36"	92"		87.0	100.0	100.0	+65/-75
39.25"		87.0	100.0	100.0	+65/-75	+70/-85
42"		87.0	100.0	100.0	-	+70/-85
45.25"		87.0	100.0	100.0	-	+70/-85
48"		87.0	100.0	100.0	-	-
51"		87.0	100.0	100.0	-	-
54"		87.0	100.0	100.0	-	-
57"		87.0	100.0	100.0	-	-
60"		87.0	100.0	100.0	-	-
63"		87.0	100.0	100.0	-	-
66"		87.0	100.0	100.0	-	-
69"		87.0	100.0	100.0	-	-
72"		87.0	100.0	100.0	-	-
36"		96"	87.0	100.0	100.0	+65/-75
39"	87.0		100.0	100.0	-	+70/-85
42"	87.0		100.0	100.0	-	+70/-85
45"	87.0		100.0	100.0	-	-
48"	87.0		100.0	100.0	-	-
51"	87.0		100.0	100.0	-	-
54"	87.0		100.0	100.0	-	-
57"	87.0		100.0	100.0	-	-
60"	87.0		100.0	100.0	-	-
63"	87.0		100.0	100.0	-	-
66"	87.0		100.0	100.0	-	-
69"	87.0		100.0	100.0	-	-

DESIGN LOAD CAPACITY - PSF							
NOMINAL DIMS.		GLASS TYPE 'A'	GLASS TYPE 'B'	GLASS TYPE 'C'	GLASS TYPE 'D'	GLASS TYPE 'E'	
D.L.O. WIDTH	D.L.O. HEIGHT	EXT. (+) INT. (-)	EXT. (+) INT. (-)	EXT. (+) INT. (-)	EXT. (+) INT. (-)	EXT. (+) INT. (-)	
36"	99"	87.0	100.0	100.0	+65/-75	+70/-85	
39"		87.0	100.0	100.0	-	+70/-85	
42"		87.0	100.0	100.0	-	+70/-85	
45"		87.0	100.0	100.0	-	-	
48"		87.0	100.0	100.0	-	-	
51"		87.0	100.0	100.0	-	-	
54"		87.0	100.0	100.0	-	-	
57"		87.0	100.0	100.0	-	-	
60"		87.0	100.0	100.0	-	-	
63"		87.0	100.0	100.0	-	-	
66"		87.0	100.0	100.0	-	-	
35"		102"	87.0	100.0	100.0	+65/-75	+70/-85
39"			87.0	100.0	100.0	-	+70/-85
42"			87.0	100.0	100.0	-	-
45"	87.0		100.0	100.0	-	-	
48"	87.0		100.0	100.0	-	-	
51"	87.0		100.0	100.0	-	-	
54"	87.0		100.0	100.0	-	-	
57"	87.0		100.0	100.0	-	-	
60"	87.0		100.0	100.0	-	-	
63"	87.0		100.0	100.0	-	-	
66"	87.0		100.0	100.0	-	-	
36"	105"		87.0	100.0	100.0	-	+70/-85
39"			87.0	100.0	100.0	-	+70/-85
42"			87.0	100.0	100.0	-	-
45"		87.0	100.0	100.0	-	-	
48"		87.0	100.0	100.0	-	-	
51"		87.0	100.0	100.0	-	-	
54"		87.0	100.0	100.0	-	-	
57"		87.0	100.0	100.0	-	-	
60"		87.0	100.0	100.0	-	-	
63"		87.0	100.0	100.0	-	-	
36"		108"	87.0	100.0	100.0	-	+70/-85
39"			87.0	100.0	100.0	-	-
42"			87.0	100.0	100.0	-	-
45"			87.0	100.0	100.0	-	-
48"	87.0		100.0	100.0	-	-	
51"	87.0		100.0	100.0	-	-	
54"	87.0		100.0	100.0	-	-	
57"	87.0		100.0	100.0	-	-	
60"	87.0		100.0	100.0	-	-	
63"	87.0		100.0	100.0	-	-	
36"	111"		87.0	100.0	100.0	-	+70/-85
39"			87.0	100.0	100.0	-	-
42"			87.0	100.0	100.0	-	-
45"			87.0	100.0	100.0	-	-
48"		87.0	100.0	100.0	-	-	
51"		87.0	100.0	100.0	-	-	
54"		87.0	100.0	100.0	-	-	
57"		87.0	100.0	100.0	-	-	
60"		87.0	100.0	100.0	-	-	

DESIGN LOAD CAPACITY - PSF						
NOMINAL DIMS.		GLASS TYPE 'A'	GLASS TYPE 'B'	GLASS TYPE 'C'	GLASS TYPE 'E'	
D.L.O. WIDTH	D.L.O. HEIGHT	EXT. (+) INT. (-)	EXT. (+) INT. (-)	EXT. (+) INT. (-)	EXT. (+) INT. (-)	
36"	114"	87.0	100.0	100.0	+70/-85	
39"		87.0	100.0	100.0	-	
42"		87.0	100.0	100.0	-	
45"		87.0	100.0	100.0	-	
48"		87.0	100.0	100.0	-	
51"		87.0	100.0	100.0	-	
54"		87.0	100.0	100.0	-	
56"		87.0	100.0	97.9	-	
57"		87.0	100.0	-	-	
36"		117"	87.0	100.0	100.0	-
39"			87.0	100.0	100.0	-
42"			87.0	100.0	100.0	-
45"			87.0	100.0	100.0	-
48"			87.0	100.0	100.0	-
51"	87.0		100.0	100.0	-	
54"	87.0		100.0	100.0	-	
57"	87.0		100.0	-	-	
36"	120"		87.0	100.0	100.0	-
39"			87.0	100.0	100.0	-
42"			87.0	100.0	100.0	-
45"			87.0	100.0	100.0	-
48"			87.0	100.0	100.0	-
51"			87.0	100.0	100.0	-
54"		87.0	98.5	98.5	-	

NOTE:
GLASS CAPACITIES ON THIS SHEET ARE
BASED ON ASTM E1300-09 (3 SEC. GUSTS)



STEP 2: GLASS LOAD TABLES




http://www.trulite.com

403 WESTPARK COURT, Suite 201
PEACHTREE, GA 30269
p. 800-432-8132 | f. 954-724-2083

PRODUCT:
Resistor
3000 ALUMINUM
STOREFRONT WALL-LMI



REV#	DATE/REMARKS
Rev.3	ADD NEW GLASS INTERLAYER

ENGINEER:

MCY ENGINEERING, INC.
GLAZING CONSULTANT
12781 MIRAMAR PARKWAY #301
MIRAMAR, FL 33027
P: 305-271-0117
Email: MCY@MCYEngineering.com
www.MCYEngineering.com

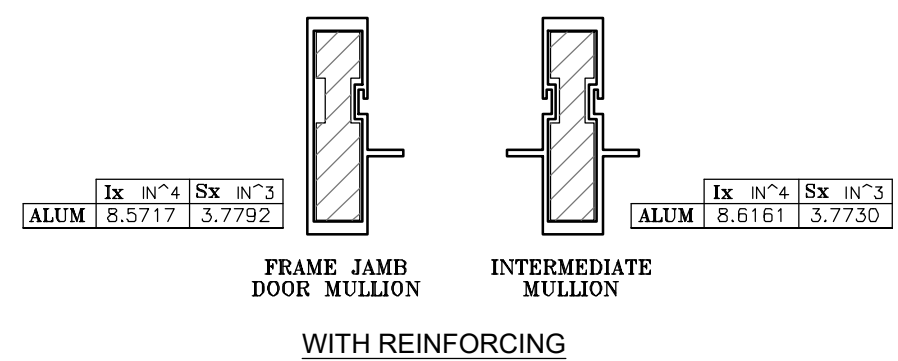
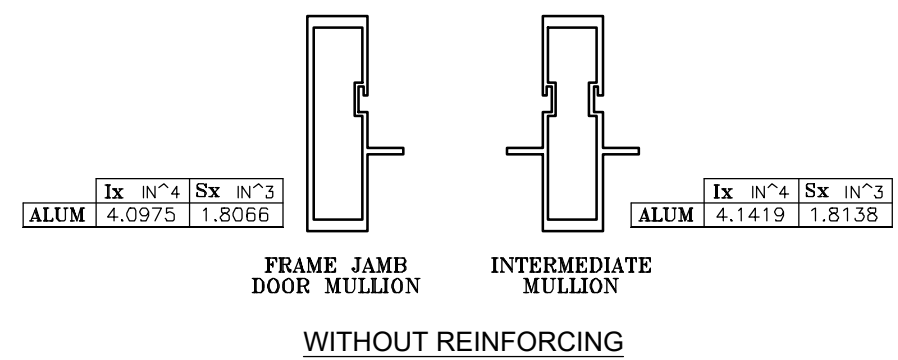
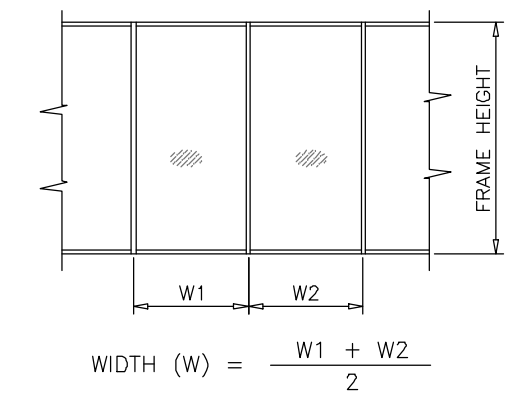
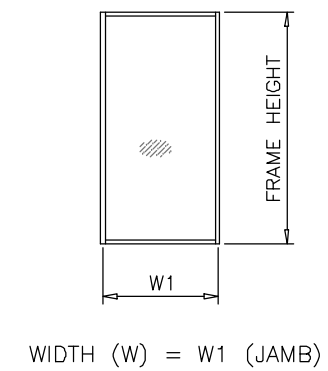
STAMP:

YIPING WANG, P.E.
TEXAS REGISTRATION
#136420
YIPING WANG
136420
PROFESSIONAL ENGINEER
September 6th, 2022

PRODUCT CONTROL APPROVAL:

MULLION LOAD CAPACITY – PSF WITHOUT INTERMEDIATE HORIZONTALS			
NOMINAL DIMS.		WITHOUT REINFORCING	WITH REINFORCING
WIDTH (W)	FRAME HEIGHT	EXT.(+) / INT.(-)	EXT.(+) / INT.(-)
24"	78"	87.5	100.0
30"		87.5	100.0
36"		87.5	100.0
42"		87.5	100.0
48"		87.5	100.0
54"		87.5	100.0
60"		87.5	100.0
66"		87.5	100.0
72"		87.5	100.0
24"		84"	87.5
30"	87.5		100.0
36"	87.5		100.0
42"	87.5		100.0
48"	87.5		100.0
54"	87.5		100.0
60"	85.6		100.0
66"	81.3		100.0
72"	78.5		100.0
24"	90"		87.5
30"		87.5	100.0
36"		87.5	100.0
42"		87.5	100.0
48"		81.7	100.0
54"		75.0	100.0
60"		70.1	100.0
66"		66.5	100.0
72"		63.9	100.0
24"		96"	87.5
30"	87.5		100.0
36"	84.4		100.0
42"	73.9		100.0
48"	66.3		100.0
54"	60.7		100.0
60"	56.4		100.0
66"	53.2		100.0
72"	50.8		100.0
24"	102"		87.5
30"		82.6	100.0
36"		69.9	100.0
42"		61.0	100.0
48"		54.6	100.0
54"		49.8	100.0
60"		46.1	95.9
66"		43.3	90.0
72"		-	85.6

MULLION LOAD CAPACITY – PSF WITHOUT INTERMEDIATE HORIZONTALS				
NOMINAL DIMS.		WITHOUT REINFORCING	WITH REINFORCING	
WIDTH (W)	FRAME HEIGHT	EXT.(+) / INT.(-)	EXT.(+) / INT.(-)	
24"	108"	85.7	100.0	
30"		69.3	100.0	
36"		58.5	100.0	
42"		51.0	100.0	
48"		45.5	94.7	
54"		41.4	86.1	
60"		38.2	79.5	
66"		35.7	74.3	
24"		114"	72.7	100.0
30"			58.7	100.0
36"	49.6		100.0	
42"	43.1		89.7	
48"	38.4		79.8	
54"	34.8		72.4	
60"	32.0		66.7	
24"	120"		62.2	100.0
30"			50.2	100.0
36"			42.3	88.0
42"		36.8	76.5	
48"		32.7	68.0	
54"		29.6	61.5	
60"		27.2	56.5	



STEP 3: MULLION LOAD CAPACITIES

Trulite
GLASS & ALUMINUM SOLUTIONS™
http://www.trulite.com
403 WESTPARK COURT, Suite 201
PEACHTREE, GA 30269
p. 800-432-8132 | f. 954-724-2083

PRODUCT:
Resistor
3000 ALUMINUM
STOREFRONT WALL-LMI
Resistor
PRODUCT SERIES

REVN	DATE/REMARKS
Rev.3	ADD NEW GLASS INTERLAYER

ENGINEER:
MCY ENGINEERING, INC.
GLAZING CONSULTANT
12781 MIRAMAR PARKWAY #301
MIRAMAR, FL 33027
P: 305-271-0117
Email: MCY@MCYEngineering.com
www.MCYEngineering.com

STAMP:
YIPING WANG, P.E.
TEXAS REGISTRATION
PE-TX #136420
YIPING WANG
136420
PROFESSIONAL ENGINEER
September 6th, 2022

PRODUCT CONTROL APPROVAL:

DRAWN: James	DRAWING No:
DATE: 08/29/22	4 OF 11
DWG: TAD14-01	

PRODUCT:

Resistor
3000 ALUMINUM
STOREFRONT WALL-LMI

Resistor
PRODUCT SERIES

REV#	DATE/REMARKS
Rev.3	ADD NEW GLASS INTERLAYER

ENGINEER:



MCY ENGINEERING, INC.
GLAZING CONSULTANT

12781 MIRAMAR PARKWAY #301
MIRAMAR, FL 33027
P: 305-271-0117
Email: MCY@MCYEngineering.com
www.MCYEngineering.com

STAMP:



PRODUCT CONTROL APPROVAL:

DRAWN: James

DRAWING No:

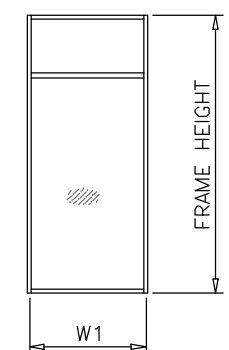
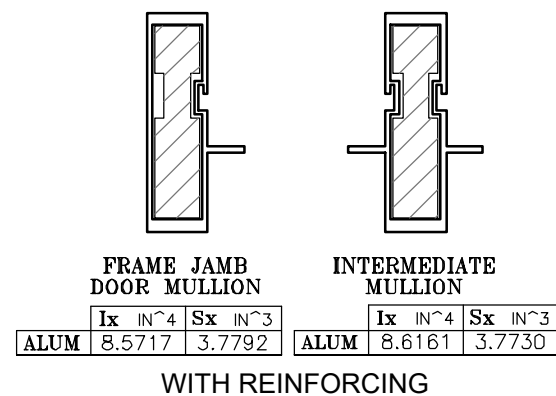
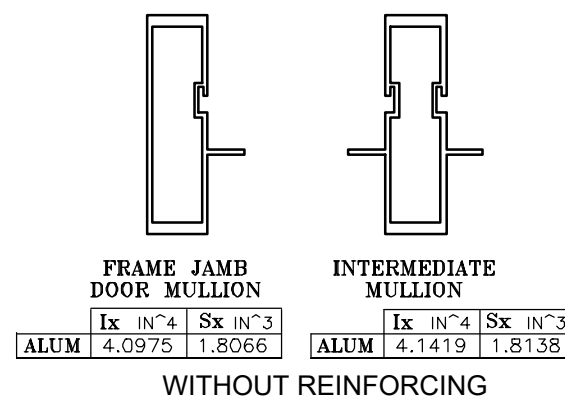
DATE: 08/29/22

5 OF 11

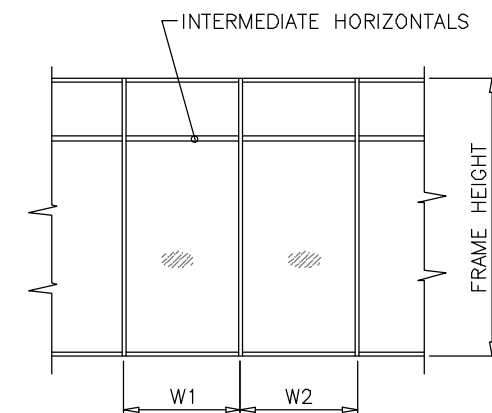
DWG: TAD14-01

MULLION LOAD CAPACITY – PSF WITH INTERMEDIATE HORIZONTALS			
NOMINAL DIMS.		WITHOUT REINFORCING	WITH REINFORCING
WIDTH (W)	FRAME HEIGHT	EXT.(+) / INT.(-)	EXT.(+) / INT.(-)
24"	78"	87.5	100.0
30"		87.5	100.0
36"		87.5	100.0
42"		87.5	100.0
48"		87.5	100.0
54"		87.5	100.0
60"		82.9	100.0
66"		75.4	100.0
72"		69.1	100.0
24"		84"	87.5
30"	87.5		100.0
36"	87.5		100.0
42"	87.5		100.0
48"	87.5		100.0
54"	79.0		100.0
60"	71.1		100.0
66"	64.6		100.0
72"	59.2		100.0
24"	90"		87.5
30"		87.5	100.0
36"		87.5	100.0
42"		83.1	100.0
48"		72.7	100.0
54"		64.6	100.0
60"		58.2	100.0
66"		52.9	100.0
72"		48.5	100.0
24"		96"	87.5
30"	87.5		100.0
36"	79.9		100.0
42"	68.5		100.0
48"	59.9		100.0
54"	53.3		100.0
60"	47.9		99.7
66"	43.6		90.7
72"	39.9		83.1
24"	102"		87.5
30"		79.9	100.0
36"		66.6	100.0
42"		57.1	100.0
48"		50.0	100.0
54"		44.4	92.4
60"		40.0	83.1
66"		36.3	75.6
72"		-	69.3

MULLION LOAD CAPACITY – PSF WITH INTERMEDIATE HORIZONTALS				
NOMINAL DIMS.		WITHOUT REINFORCING	WITH REINFORCING	
WIDTH (W)	FRAME HEIGHT	EXT.(+) / INT.(-)	EXT.(+) / INT.(-)	
24"	108"	84.2	100.0	
30"		67.3	100.0	
36"		56.1	100.0	
42"		48.1	100.0	
48"		42.1	87.5	
54"		37.4	77.8	
60"		33.7	70.0	
66"		30.6	63.7	
24"		114"	71.6	100.0
30"			57.3	100.0
36"	47.7		99.3	
42"	40.9		85.1	
48"	35.8		74.4	
54"	31.8		66.2	
60"	28.6		59.6	
24"	120"		61.4	100.0
30"			49.1	100.0
36"			40.9	85.1
42"		35.1	72.9	
48"		30.7	63.8	
54"		27.3	56.7	
60"		24.5	51.1	

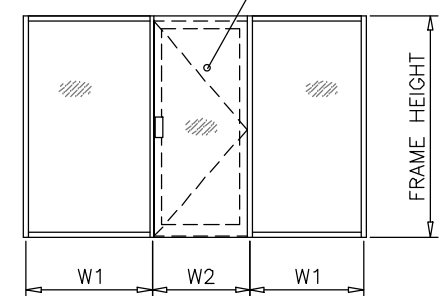


$$\text{WIDTH (W)} = W1 \text{ (JAMB)}$$



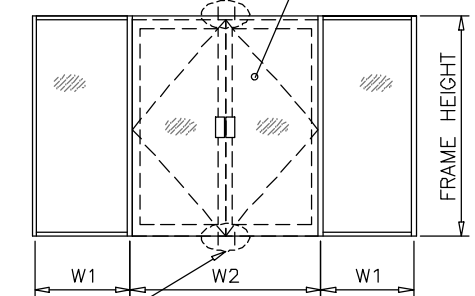
$$\text{WIDTH (W)} = \frac{W1 + W2}{2}$$

'TRULITE' DOORS SEE SEPARATE TDI LISTING



$$\text{WIDTH (W)} = \frac{W1 + W2}{2}$$

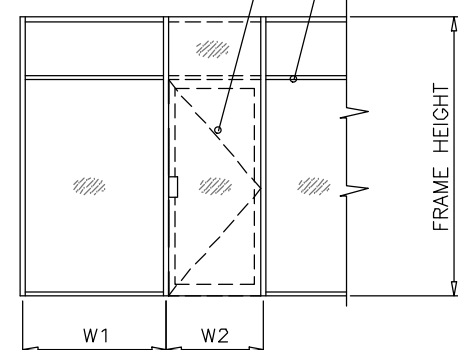
'TRULITE' DOORS SEE SEPARATE TDI LISTING



ANCHORS REQD. SEE DOOR LISTED WITH TDI

$$\text{WIDTH (W)} = \frac{W1}{2} + \frac{W2}{4}$$

'TRULITE' DOORS SEE SEPARATE TDI LISTING



$$\text{WIDTH (W)} = \frac{W1 + W2}{2}$$

PRODUCT:

Resistor 3000 ALUMINUM STOREFRONT WALL-LMI



REVN	DATE/REMARKS
Rev.3	ADD NEW GLASS INTERLAYER

ENGINEER:



MCY ENGINEERING, INC. GLAZING CONSULTANT

12781 MIRAMAR PARKWAY #301
MIRAMAR, FL 33027
P: 305-271-0117
Email: MCY@MCYEngineering.com
www.MCYEngineering.com

STAMP:



September 6th, 2022

PRODUCT CONTROL APPROVAL:

DRAWN: James

DRAWING No:

DATE: 08/29/22

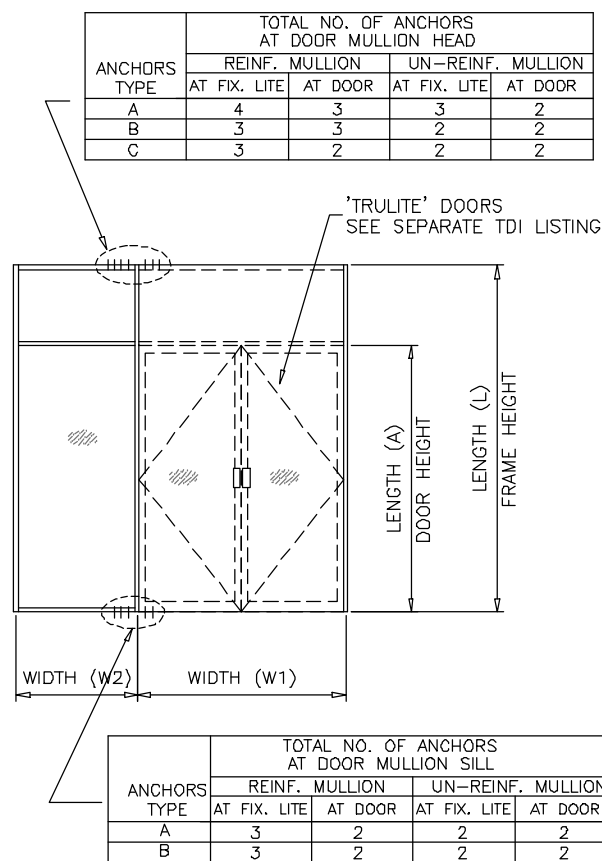
6 OF 11

DWG: TAD14-01

MULLION LOAD CAPACITY - PSF AT DOUBLE DOOR WITH TRANSOM					
NOMINAL DIMS.				WITHOUT REINFORCING	WITH REINFORCING
WIDTH (W1)	WIDTH (W2)	LENGTH (A)	LENGTH (L)	EXT.(+) INT.(-)	EXT.(+) INT.(-)
60"	30"	96"	102"	71.1	87.5
	33"			68.1	87.5
	36"			65.3	87.5
	39"			62.7	87.5
	42"			60.3	87.5
	48"			56.0	87.5
72"	30"	96"	102"	64.5	87.5
	33"			62.0	87.5
	36"			59.6	87.5
	39"			57.5	87.5
	42"			55.5	87.5
	48"			51.8	87.5
60"	30"	96"	108"	56.8	87.5
	33"			54.5	87.5
	36"			52.4	87.5
	39"			50.4	87.5
	42"			48.6	87.5
	48"			45.3	87.5
72"	30"	96"	108"	42.4	87.5
	33"			51.3	87.5
	36"			49.4	87.5
	39"			47.6	87.5
	42"			46.0	87.5
	48"			44.5	87.5
60"	30"	96"	114"	41.7	87.2
	33"			39.2	82.1
	36"			46.2	87.5
	39"			44.4	87.5
	42"			42.8	87.5
	48"			41.2	86.2
72"	30"	96"	114"	39.8	83.2
	33"			37.2	77.7
	36"			34.9	72.9
	39"			41.6	87.5
	42"			40.1	83.9
	48"			38.8	81.1
60"	30"	96"	114"	37.5	78.4
	33"			37.5	78.4
	36"			38.8	81.1
	39"			37.5	78.4
	42"			36.3	75.9
	48"			34.1	71.3
72"	30"	96"	114"	32.2	67.3
	33"			41.6	87.5
	36"			41.6	87.5
	39"			40.1	83.9
	42"			38.8	81.1
	48"			37.5	78.4

MULLION LOAD CAPACITY - PSF AT DOUBLE DOOR WITH TRANSOM					
NOMINAL DIMS.				WITHOUT REINFORCING	WITH REINFORCING
WIDTH (W1)	WIDTH (W2)	LENGTH (A)	LENGTH (L)	EXT.(+) INT.(-)	EXT.(+) INT.(-)
60"	30"	96"	120"	38.3	80.0
	33"			36.8	77.0
	36"			35.5	74.2
	39"			34.2	71.6
	42"			33.1	69.1
	48"			31.0	64.7
72"	30"	96"	120"	29.1	60.9
	33"			34.3	71.8
	36"			33.2	69.3
	39"			32.1	67.1
	42"			31.0	64.9
	48"			30.1	62.9
60"	30"	96"	120"	28.3	59.2
	33"			34.3	71.8
	36"			33.2	69.3
	39"			32.1	67.1
	42"			31.0	64.9
	48"			30.1	62.9

MULLION LOAD CAPACITY - PSF AT DOUBLE DOOR WITH TRANSOM					
NOMINAL DIMS.				WITHOUT REINFORCING	WITH REINFORCING
WIDTH (W1)	WIDTH (W2)	LENGTH (A)	LENGTH (L)	EXT.(+) INT.(-)	EXT.(+) INT.(-)
60"	30"	90"	96"	85.0	87.5
	33"			81.3	87.5
	36"			78.0	87.5
	39"			74.9	87.5
	42"			72.1	87.5
	48"			67.0	87.5
72"	30"	90"	96"	62.6	87.5
	33"			77.0	87.5
	36"			74.0	87.5
	39"			71.3	87.5
	42"			68.7	87.5
	48"			66.3	87.5
60"	30"	90"	102"	62.0	87.5
	33"			58.2	87.5
	36"			67.0	87.5
	39"			64.3	87.5
	42"			61.8	87.5
	48"			59.5	87.5
72"	30"	90"	102"	57.3	87.5
	33"			53.5	87.5
	36"			50.1	87.5
	39"			60.5	87.5
	42"			58.3	87.5
	48"			56.2	87.5
60"	30"	90"	108"	54.3	87.5
	33"			52.5	87.5
	36"			49.2	87.5
	39"			46.3	87.5
	42"			54.0	87.5
	48"			51.9	87.5
72"	30"	90"	108"	49.9	87.5
	33"			48.1	87.5
	36"			46.5	87.5
	39"			43.4	87.5
	42"			40.8	85.3
	48"			40.8	85.3
60"	30"	90"	108"	48.5	87.5
	33"			48.5	87.5
	36"			46.8	87.5
	39"			45.2	87.5
	42"			43.7	87.5
	48"			42.4	87.5
72"	30"	90"	108"	39.8	83.3
	33"			39.8	83.3
	36"			37.6	78.6
	39"			43.7	87.5
	42"			42.4	87.5
	48"			39.8	83.3



PRODUCT:

Resistor
3000 ALUMINUM
STOREFRONT WALL-LMI



REV#	DATE/REMARKS
Rev.3	ADD NEW GLASS INTERLAYER

ENGINEER:

MCY ENGINEERING, INC.
GLAZING CONSULTANT

12781 MIRAMAR PARKWAY #301
MIRAMAR, FL 33027
P: 305-271-0117
Email: MCY@MCYEngineering.com
www.MCYEngineering.com

STAMP:



September 6th, 2022

PRODUCT CONTROL APPROVAL:

DRAWN: James

DATE: 08/29/22

DWG: TAD14-01

DRAWING No:

7 OF 11

STEP 3: MULLION LOAD CAPACITIES

MULLION LOAD CAPACITY - PSF AT DOUBLE DOOR WITH TRANSOM					
NOMINAL DIMS.				WITHOUT REINFORCING	WITH REINFORCING
WIDTH (W1)	WIDTH (W2)	LENGTH (A)	LENGTH (L)	EXT.(+) INT.(-)	EXT.(+) INT.(-)
60"	30"	84"	90"	87.5	87.5
	33"			87.5	87.5
	36"			87.5	87.5
	39"			87.5	87.5
	42"			87.2	87.5
	48"			81.0	87.5
72"	30"	84"	90"	87.5	87.5
	33"			87.5	87.5
	36"			86.1	87.5
	39"			83.0	87.5
	42"			80.1	87.5
	48"			74.9	87.5
60"	30"	84"	96"	79.8	87.5
	33"			76.6	87.5
	36"			73.7	87.5
	39"			70.9	87.5
	42"			68.4	87.5
	48"			63.8	87.5
72"	30"	84"	96"	72.0	87.5
	33"			69.4	87.5
	36"			66.9	87.5
	39"			64.7	87.5
	42"			62.5	87.5
	48"			58.7	87.5
60"	30"	84"	102"	63.5	87.5
	33"			61.1	87.5
	36"			58.8	87.5
	39"			56.7	87.5
	42"			54.8	87.5
	48"			51.2	87.5
72"	30"	84"	102"	57.1	87.5
	33"			55.1	87.5
	36"			53.2	87.5
	39"			51.5	87.5
	42"			49.9	87.5
	48"			46.9	87.5
60"	30"	84"	108"	51.6	87.5
	33"			49.7	87.5
	36"			47.9	87.5
	39"			46.2	87.5
	42"			44.7	87.5
	48"			41.9	87.5
72"	30"	84"	108"	46.2	87.5
	33"			44.7	87.5
	36"			43.2	87.5
	39"			41.9	87.5
	42"			40.6	84.9
	48"			38.3	80.0
60"	30"	84"	114"	42.6	87.5
	33"			41.1	85.9
	36"			39.6	82.9
	39"			38.3	80.1
	42"			37.1	77.5
	48"			34.8	72.8
72"	30"	84"	114"	38.1	79.7
	33"			36.9	77.1
	36"			35.7	74.7
	39"			34.6	72.4
	42"			33.6	70.3
	48"			31.7	66.3
60"	30"	84"	120"	35.7	74.7
	33"			34.5	72.1
	36"			33.3	69.6
	39"			32.2	67.3
	42"			31.2	65.2
	48"			29.3	61.2
72"	30"	84"	120"	31.9	66.8
	33"			30.9	64.6
	36"			29.9	62.6
	39"			29.0	60.7
	42"			28.2	59.0
	48"			26.6	55.7

MULLION LOAD CAPACITY - PSF AT DOUBLE DOOR WITH TRANSOM					
NOMINAL DIMS.				WITHOUT REINFORCING	WITH REINFORCING
WIDTH (W1)	WIDTH (W2)	LENGTH (A)	LENGTH (L)	EXT.(+) INT.(-)	EXT.(+) INT.(-)
60"	30"	84"	108"	51.6	87.5
	33"			49.7	87.5
	36"			47.9	87.5
	39"			46.2	87.5
	42"			44.7	87.5
	48"			41.9	87.5
72"	30"	84"	108"	46.2	87.5
	33"			44.7	87.5
	36"			43.2	87.5
	39"			41.9	87.5
	42"			40.6	84.9
	48"			38.3	80.0
60"	30"	84"	114"	42.6	87.5
	33"			41.1	85.9
	36"			39.6	82.9
	39"			38.3	80.1
	42"			37.1	77.5
	48"			34.8	72.8
72"	30"	84"	114"	38.1	79.7
	33"			36.9	77.1
	36"			35.7	74.7
	39"			34.6	72.4
	42"			33.6	70.3
	48"			31.7	66.3
60"	30"	84"	120"	35.7	74.7
	33"			34.5	72.1
	36"			33.3	69.6
	39"			32.2	67.3
	42"			31.2	65.2
	48"			29.3	61.2
72"	30"	84"	120"	31.9	66.8
	33"			30.9	64.6
	36"			29.9	62.6
	39"			29.0	60.7
	42"			28.2	59.0
	48"			26.6	55.7

MULLION LOAD CAPACITY - PSF AT DOUBLE DOOR WITH TRANSOM					
NOMINAL DIMS.				WITHOUT REINFORCING	WITH REINFORCING
WIDTH (W1)	WIDTH (W2)	LENGTH (A)	LENGTH (L)	EXT.(+) INT.(-)	EXT.(+) INT.(-)
60"	30"	80"	90"	87.5	87.5
	33"			87.5	87.5
	36"			87.5	87.5
	39"			87.1	87.5
	42"			83.9	87.5
	48"			78.3	87.5
72"	30"	80"	90"	73.3	87.5
	33"			87.5	87.5
	36"			85.4	87.5
	39"			82.3	87.5
	42"			79.5	87.5
	48"			76.9	87.5
60"	30"	80"	96"	72.1	87.5
	33"			67.8	87.5
	36"			76.9	87.5
	39"			73.9	87.5
	42"			71.1	87.5
	48"			68.5	87.5
72"	30"	80"	96"	66.2	87.5
	33"			61.9	87.5
	36"			69.1	87.5
	39"			66.7	87.5
	42"			64.4	87.5
	48"			62.3	87.5
60"	30"	80"	102"	60.3	87.5
	33"			56.7	87.5
	36"			53.5	87.5
	39"			61.6	87.5
	42"			59.3	87.5
	48"			57.1	87.5
72"	30"	80"	102"	55.1	87.5
	33"			53.3	87.5
	36"			49.9	87.5
	39"			47.0	87.5
	42"			55.2	87.5
	48"			53.3	87.5
60"	30"	80"	108"	51.6	87.5
	33"			49.9	87.5
	36"			48.4	87.5
	39"			45.6	87.5
	42"			43.1	87.5
	48"			43.1	87.5

MULLION LOAD CAPACITY - PSF AT DOUBLE DOOR WITH TRANSOM					
NOMINAL DIMS.				WITHOUT REINFORCING	WITH REINFORCING
WIDTH (W1)	WIDTH (W2)	LENGTH (A)	LENGTH (L)	EXT.(+) INT.(-)	EXT.(+) INT.(-)
60"	30"	80"	108"	50.3	87.5
	33"			48.4	87.5
	36"			46.7	87.5
	39"			45.2	87.5
	42"			43.7	87.5
	48"			41.0	85.8
72"	30"	80"	108"	38.6	80.8
	33"			44.9	87.5
	36"			43.5	87.5
	39"			42.1	87.5
	42"			40.8	85.4
	48"			39.6	82.8
60"	30"	80"	114"	37.4	78.2
	33"			35.4	74.1
	36"			41.7	87.3
	39"			40.2	84.2
	42"			38.9	81.3
	48"			37.6	78.6
72"	30"	80"	114"	36.4	76.1
	33"			34.2	71.5
	36"			32.2	67.4
	39"			37.2	77.9
	42"			36.1	75.4
	48"			34.9	73.1
60"	30"	80"	120"	33.9	70.9
	33"			33.9	68.9
	36"			32.9	68.9
	39"			31.1	65.1
	42"			29.5	61.7
	48"			35.1	73.5
72"	30"	80"	120"	33.9	70.9
	33"			32.8	68.5
	36"			31.7	66.3
	39"			30.7	64.2
	42"			28.9	60.4
	48"			27.2	57.0
60"	30"	80"	120"	31.3	65.5
	33"			30.3	63.4
	36"			29.4	61.5
	39"			28.5	59.7
	42"			27.7	58.0
	48"			26.2	54.9

PRODUCT:

Resistor 3000 ALUMINUM STOREFRONT WALL-LMI

Resistor
PRODUCT SERIES

REV#	DATE/REMARKS
Rev.3	ADD NEW GLASS INTERLAYER

ENGINEER:



MCY ENGINEERING, INC.
GLAZING CONSULTANT

12781 MIRAMAR PARKWAY #301
MIRAMAR, FL 33027
P: 305-271-0117
Email: MCY@MCYEngineering.com
www.MCYEngineering.com

STAMP:



September 6th, 2022

PRODUCT CONTROL APPROVAL:

DRAWN: James

DATE: 08/29/22

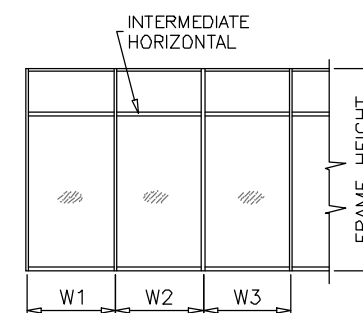
DWG: TAD14-01

DRAWING No:

8 OF 11

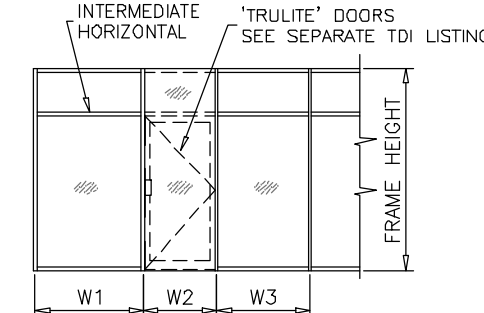
ANCHOR LOAD CAPACITY - PSF EXT.(+) & INT.(-)								
NOMINAL DIMS.		ANCHORS TYPE 'A'			ANCHORS TYPE 'B'		ANCHORS TYPE 'C'	
WIDTH (W)	FRAME HEIGHT	'A2'	'A3'	'A4'	'B2'	'B3'	'C2'	'C3'
24"	78"	100.0	100.0	100.0	100.0	100.0	100.0	100.0
30"		100.0	100.0	100.0	100.0	100.0	100.0	100.0
36"		100.0	100.0	100.0	100.0	100.0	100.0	100.0
42"		100.0	100.0	100.0	100.0	100.0	100.0	100.0
48"		90.8	100.0	100.0	100.0	100.0	100.0	100.0
54"		80.7	100.0	100.0	99.0	100.0	100.0	100.0
60"		72.6	100.0	100.0	89.1	100.0	100.0	100.0
66"		66.0	99.0	100.0	81.0	100.0	100.0	100.0
72"		60.5	90.8	100.0	74.3	100.0	98.3	100.0
72"		60.5	90.8	100.0	74.3	100.0	98.3	100.0
24"	84"	100.0	100.0	100.0	100.0	100.0	100.0	100.0
30"		100.0	100.0	100.0	100.0	100.0	100.0	100.0
36"		100.0	100.0	100.0	100.0	100.0	100.0	100.0
42"		96.3	100.0	100.0	100.0	100.0	100.0	100.0
48"		84.3	100.0	100.0	100.0	100.0	100.0	100.0
54"		74.9	100.0	100.0	92.0	100.0	100.0	100.0
60"		67.4	100.0	100.0	82.8	100.0	100.0	100.0
66"		61.3	91.9	100.0	75.3	100.0	99.5	100.0
72"		56.2	84.3	100.0	69.0	100.0	91.2	100.0
72"		56.2	84.3	100.0	69.0	100.0	91.2	100.0
24"	90"	100.0	100.0	100.0	100.0	100.0	100.0	100.0
30"		100.0	100.0	100.0	100.0	100.0	100.0	100.0
36"		100.0	100.0	100.0	100.0	100.0	100.0	100.0
42"		89.9	100.0	100.0	100.0	100.0	100.0	100.0
48"		78.7	100.0	100.0	96.6	100.0	100.0	100.0
54"		69.9	100.0	100.0	85.8	100.0	100.0	100.0
60"		62.9	94.4	100.0	77.3	100.0	100.0	100.0
66"		57.2	85.8	100.0	70.2	100.0	92.9	100.0
72"		52.4	78.7	100.0	64.4	96.6	85.2	100.0
72"		52.4	78.7	100.0	64.4	96.6	85.2	100.0
24"	96"	100.0	100.0	100.0	100.0	100.0	100.0	100.0
30"		100.0	100.0	100.0	100.0	100.0	100.0	100.0
36"		98.3	100.0	100.0	100.0	100.0	100.0	100.0
42"		84.3	100.0	100.0	100.0	100.0	100.0	100.0
48"		73.8	100.0	100.0	90.5	100.0	100.0	100.0
54"		65.6	98.3	100.0	80.5	100.0	100.0	100.0
60"		59.0	88.5	100.0	72.4	100.0	95.8	100.0
66"		53.6	80.5	100.0	65.8	98.8	87.1	100.0
72"		49.2	73.8	98.3	60.4	90.5	79.8	100.0
72"		49.2	73.8	98.3	60.4	90.5	79.8	100.0
24"	102"	100.0	100.0	100.0	100.0	100.0	100.0	100.0
30"		100.0	100.0	100.0	100.0	100.0	100.0	100.0
36"		92.5	100.0	100.0	100.0	100.0	100.0	100.0
42"		79.3	100.0	100.0	97.4	100.0	100.0	100.0
48"		69.4	100.0	100.0	85.2	100.0	100.0	100.0
54"		61.7	92.5	100.0	75.7	100.0	100.0	100.0
60"		55.5	83.3	100.0	68.2	100.0	90.2	100.0
66"		50.5	75.7	100.0	62.0	93.0	82.0	100.0
72"		46.3	69.4	92.5	56.8	85.2	75.1	100.0
72"		46.3	69.4	92.5	56.8	85.2	75.1	100.0
24"	108"	100.0	100.0	100.0	100.0	100.0	100.0	100.0
30"		100.0	100.0	100.0	100.0	100.0	100.0	100.0
36"		87.4	100.0	100.0	100.0	100.0	100.0	100.0
42"		74.9	100.0	100.0	92.0	100.0	100.0	100.0
48"		65.6	98.3	100.0	80.5	100.0	100.0	100.0
54"		58.3	87.4	100.0	71.5	100.0	94.6	100.0
60"		52.4	78.7	100.0	64.4	96.6	85.2	100.0
66"		47.7	71.5	95.4	58.5	87.8	77.4	100.0
66"		47.7	71.5	95.4	58.5	87.8	77.4	100.0

ANCHOR LOAD CAPACITY - PSF EXT.(+) & INT.(-)								
NOMINAL DIMS.		ANCHORS TYPE 'A'			ANCHORS TYPE 'B'		ANCHORS TYPE 'C'	
WIDTH (W)	FRAME HEIGHT	'A2'	'A3'	'A4'	'B2'	'B3'	'C2'	'C3'
24"	114"	100.0	100.0	100.0	100.0	100.0	100.0	100.0
30"		99.4	100.0	100.0	100.0	100.0	100.0	100.0
36"		82.8	100.0	100.0	100.0	100.0	100.0	100.0
42"		71.0	100.0	100.0	87.1	100.0	100.0	100.0
48"		62.1	93.2	100.0	76.2	100.0	100.0	100.0
54"		55.2	82.8	100.0	67.8	100.0	89.6	100.0
60"	49.7	74.5	99.4	61.0	91.5	80.7	100.0	
24"	120"	100.0	100.0	100.0	100.0	100.0	100.0	100.0
30"		94.4	100.0	100.0	100.0	100.0	100.0	100.0
36"		78.7	100.0	100.0	96.6	100.0	100.0	100.0
42"		67.4	100.0	100.0	82.8	100.0	100.0	100.0
48"		59.0	88.5	100.0	72.4	100.0	95.8	100.0
54"		52.4	78.7	100.0	64.4	96.6	85.2	100.0
60"	47.2	70.8	94.4	57.9	86.9	76.6	100.0	



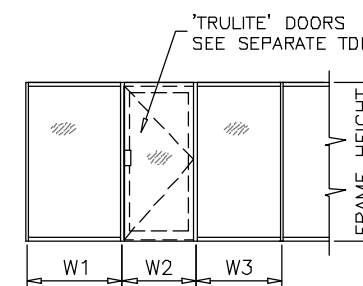
WIDTH (W) = W1
AT FRAME JAMB

WIDTH (W) = $\frac{W2 + W3}{2}$
AT FRAME MULLION



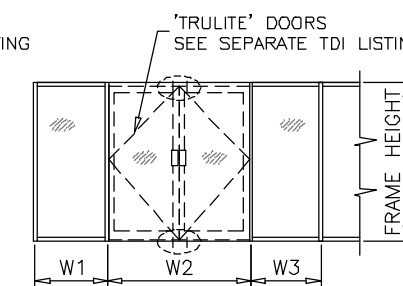
WIDTH (W) = W1
AT FRAME JAMB

WIDTH (W) = $\frac{W2 + W3}{2}$
AT FRAME MULLION



WIDTH (W) = W1
AT FRAME JAMB

WIDTH (W) = $\frac{W2 + W3}{2}$
AT FRAME MULLION

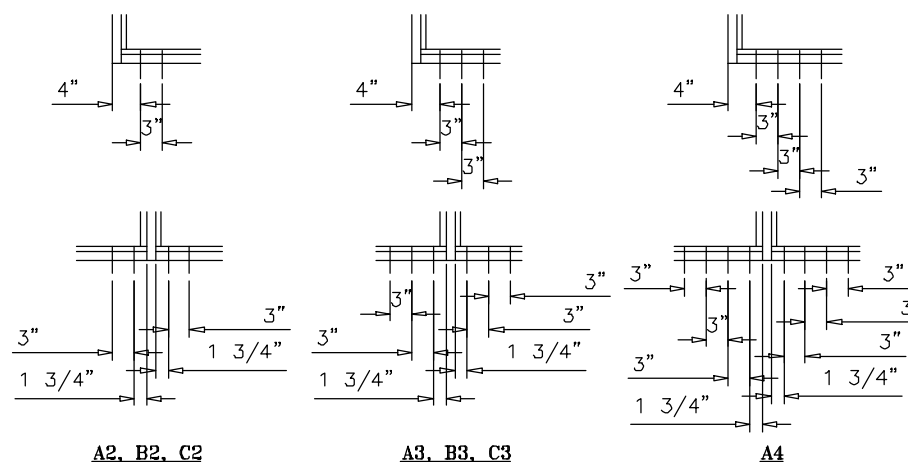


WIDTH (W) = W1
AT FRAME JAMB

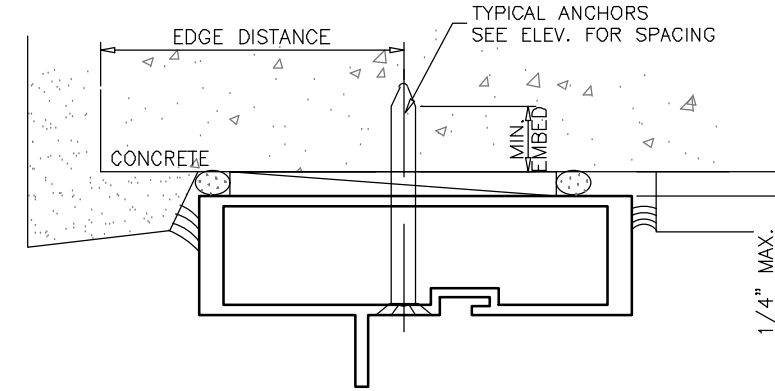
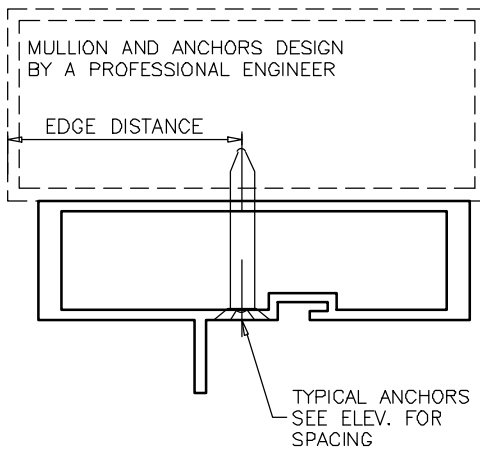
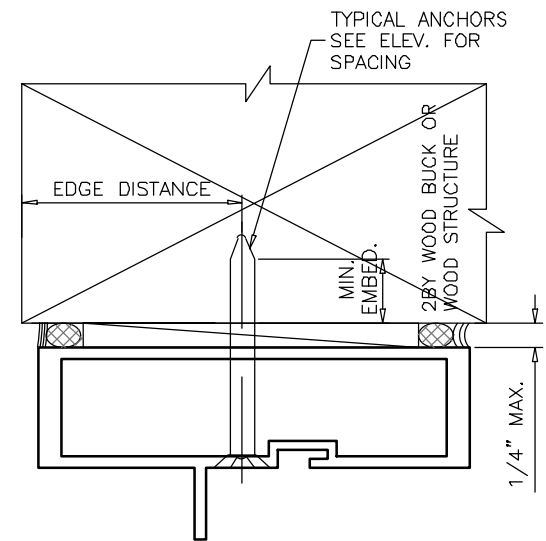
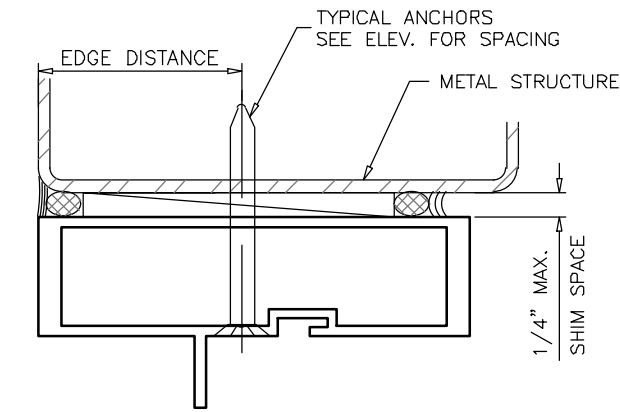
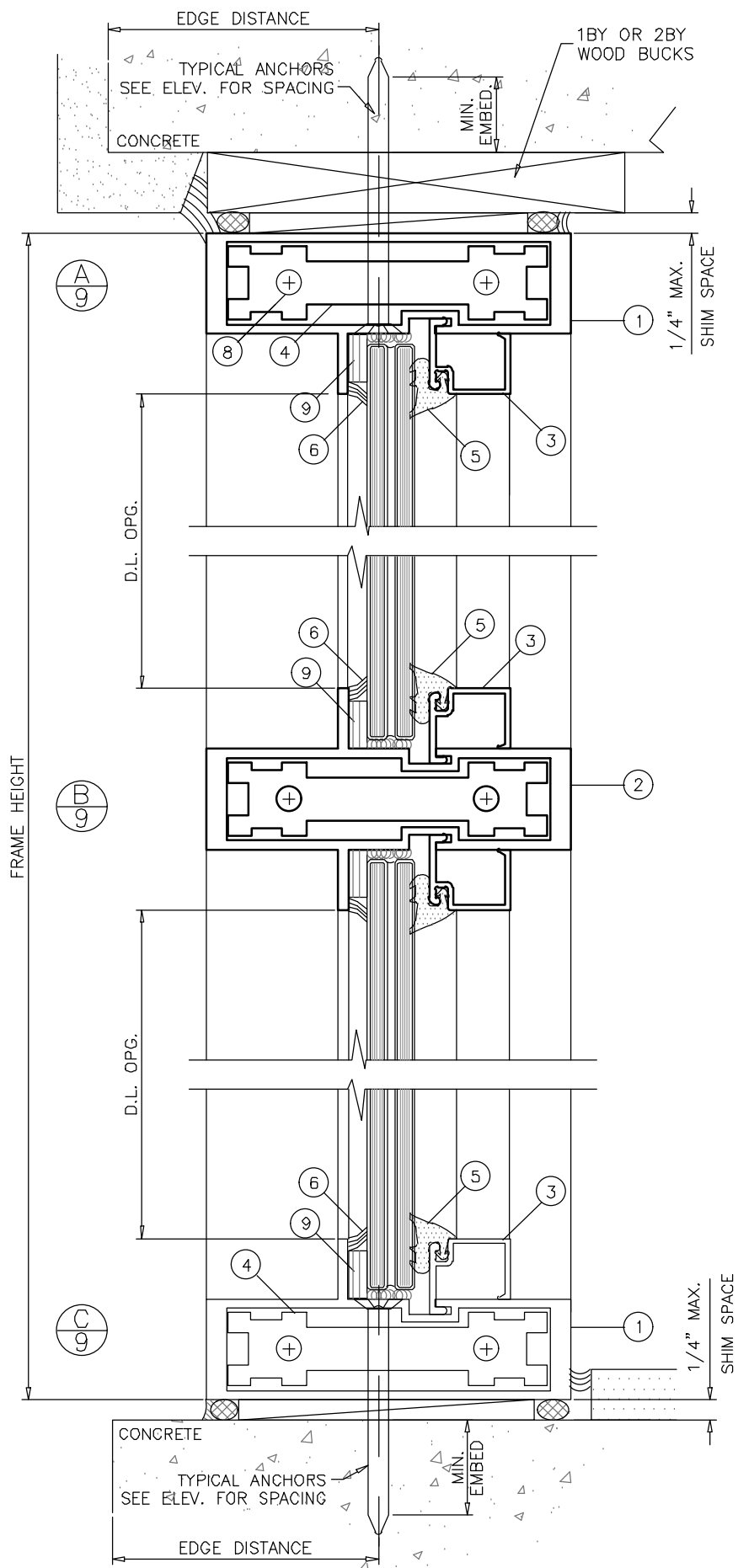
WIDTH (W) = $\frac{W2 + W3}{2}$
AT FRAME MULLION

ANCHORS TYPES: SEE SHEET 9 FOR DESCRIPTION
A2 = (2) ANCHORS TYPE 'A' AT JAMB OR EACH SIDE OF MULLION
A3 = (3) ANCHORS TYPE 'A' AT JAMB OR EACH SIDE OF MULLION
A4 = (4) ANCHORS TYPE 'A' AT JAMB OR EACH SIDE OF MULLION
B2 = (2) ANCHORS TYPE 'B' AT JAMB OR EACH SIDE OF MULLION
B3 = (3) ANCHORS TYPE 'B' AT JAMB OR EACH SIDE OF MULLION
C2 = (2) ANCHORS TYPE 'C' AT JAMB OR EACH SIDE OF MULLION
C3 = (3) ANCHORS TYPE 'C' AT JAMB OR EACH SIDE OF MULLION

ALL OTHER ANCHORS TO BE SPACED AS PER ELEVATION.



EXTERIOR OR INTERIOR



WOOD BUCKS AND METAL STRUCTURES NOT BY TRULITE. MUST SUSTAIN LOADS IMPOSED BY GLAZING SYSTEM AND TRANSFER THEM TO THE BUILDING STRUCTURE.

TYPICAL ANCHORS:

SEE ELEVATIONS FOR SPACING

TYPE 'A' 1/4" DIA. ULTRACON+ BY 'DEWALT' (Fu 164 KSI, Fy=148 KSI) INTO 2BY WOOD BUCKS OR WOOD STRUCTURES
 1-1/2" MIN. PENETRATION INTO WOOD THRU WOOD BUCKS INTO CONC. OR MASONRY*
 1-1/4" MIN. EMBED INTO MASONRY*
 1-3/8" MIN. EMBED INTO CONC.

TYPE 'B' 1/4" DIA. ULTRACON+ BY 'DEWALT' (Fu 164 KSI, Fy=148 KSI) DIRECTLY INTO CONCRETE OR MASONRY*
 1-5/8" MIN. EMBED INTO CONCRETE OR MASONRY*

TYPE 'C' #14 SMS OR SELF DRILLING SCREWS (GRADE 2 CRS) INTO MULLION DESIGN BY PROFESSIONAL ENGINEER (1/8" THK. MIN.) INTO METAL STRUCTURE.

STEEL : 12 GA. MIN. (Fy = 36 KSI MIN.)
 ALUMINUM : 1/8" THK. MIN. (6063-T5 MIN.)
 (STEEL IN CONTACT WITH ALUMINUM TO BE PLATED OR PAINTED)

TYPICAL EDGE DISTANCE

INTO CONCRETE AND MASONRY* = 2-1/2" MIN.
 INTO WOOD STRUCTURE = 1" MIN.
 INTO METAL STRUCTURE = 3/4" MIN.

CONCRETE f'c = 3000 PSI MIN.
 C-90 HOLLOW/FILLED BLOCK f'm = 2000 PSI MIN.

SEALANTS:

GLAZING BEAD AT FRAME SILL SEALED TO GLASS WITH SILICONE
 GLAZING OPTIONS 6A, 6B OR 6C.
 FRAME CORNERS SEALED WITH DOW CORNING 999 OR EQUAL COMPATIBLE.

*MASONRY - GROUT FILLED CONCRETE BLOCK (f'c=2000 PSI MIN.)

NOTE: MASONRY USED AT JAMB SUBSTRATE ONLY

THIS PRODUCT MAY BE INSTALLED INSIDE OR OUTSIDE GLAZED

PRODUCT:

Resistor
3000 ALUMINUM
STOREFRONT WALL-LMI

Resistor
 PRODUCT SERIES

REVN	DATE/REMARKS
Rev.3	ADD NEW GLASS INTERLAYER

ENGINEER:

MCY ENGINEERING, INC.
 GLAZING CONSULTANT

12781 MIRAMAR PARKWAY #301
 MIRAMAR, FL 33027
 P: 305-271-0117
 Email: MCY@MCYEngineering.com
 www.MCYEngineering.com

STAMP:



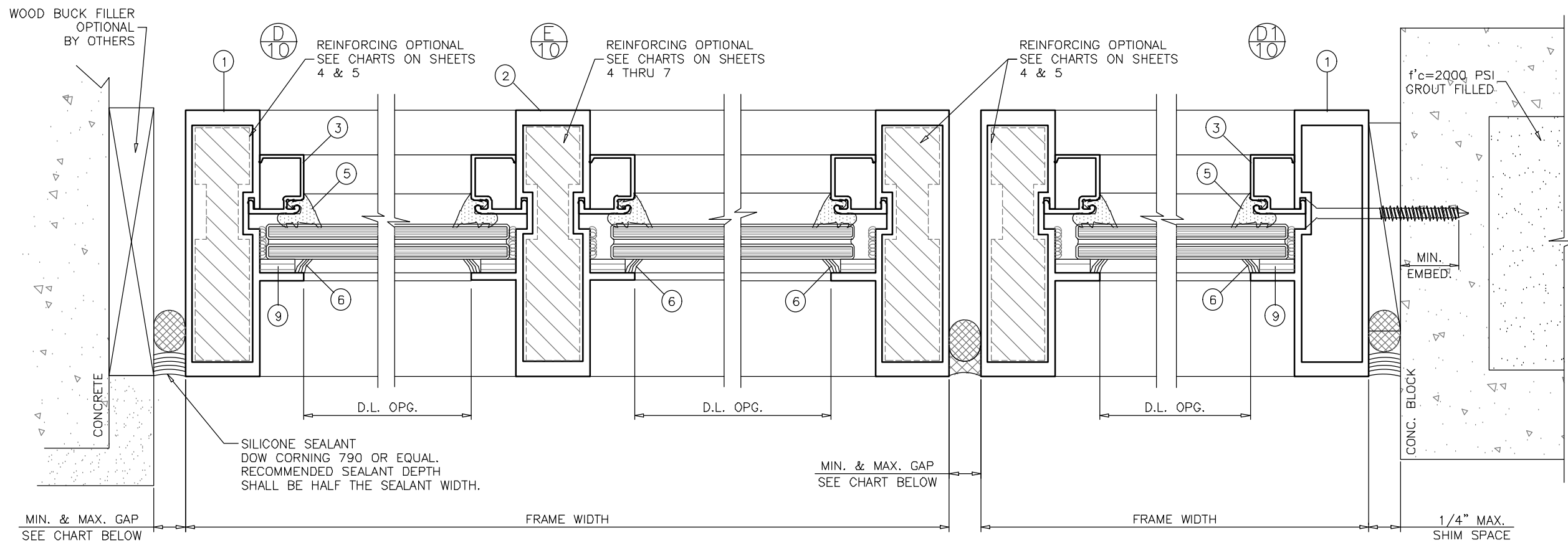
September 6th, 2022

PRODUCT CONTROL APPROVAL:

DRAWN: James
 DATE: 08/29/22
 DWG: TAD14-01

DRAWING No:

9 OF 11

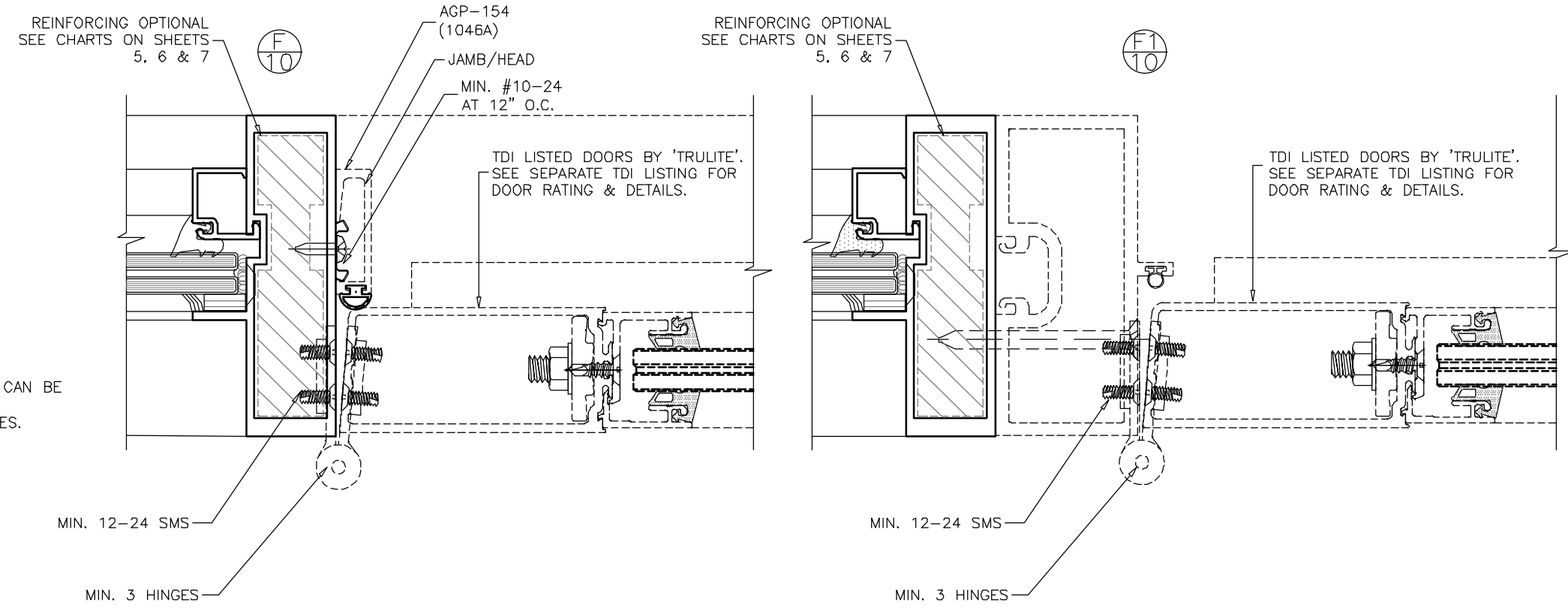


EXTERIOR OR INTERIOR

MAX. FRAME HEIGHT	GAP	
	MIN.	MAX.
60"	3/16"	1/2"
72"	1/4"	1/2"
84"	1/4"	1/2"
96"	3/8"	1/2"
108"	3/8"	1/2"
120"	1/2"	1/2"

MAX. FRAME WIDTH	MAX. GAP AT EACH SIDE
30 FT.	1-1/8"
60 FT.	1-1/8"

ALTERNATE SEALANTS AT JAMB GAPS CAN BE DESIGNED BY ENGINEER OF RECORD BASED ON MANUFACTURER GUIDE LINES.



<http://www.trulite.com>

403 WESTPARK COURT, Suite 201
PEACHTREE, GA 30269
p. 800-432-8132 | f. 954-724-2083

PRODUCT:
Resistor
3000 ALUMINUM
STOREFRONT WALL-LMI



REVN	DATE/REMARKS
Rev.3	ADD NEW GLASS INTERLAYER

ENGINEER:
MCY ENGINEERING, INC.
GLAZING CONSULTANT
12781 MIRAMAR PARKWAY #301
MIRAMAR, FL 33027
P: 305-271-0117
Email: MCY@MCYEngineering.com
www.MCYEngineering.com

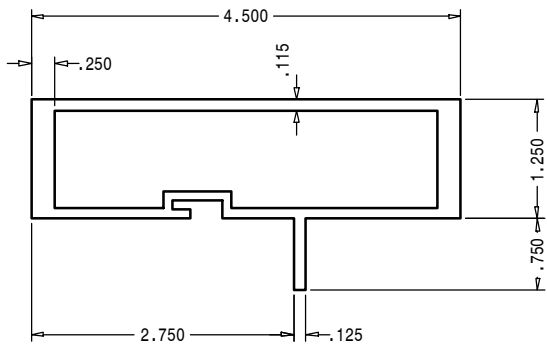
STAMP:
YIPING WANG, P.E.
TEXAS REGISTRATION
#136420
YIPING WANG
136420
PROFESSIONAL ENGINEER
September 6th, 2022

PRODUCT CONTROL APPROVAL:

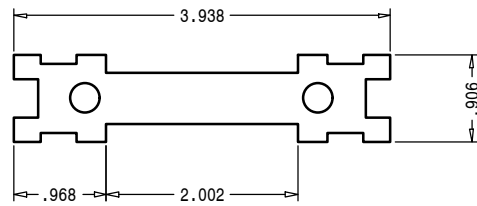
DRAWN: James DRAWING No:
DATE: 08/29/22 **10 OF 11**
DWG: TAD14-01

BILL OF MATERIALS

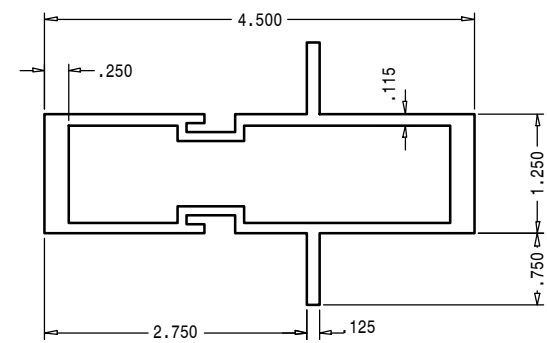
ITEM #	QTY.	PROFILE	DESCRIPTION	MATERIAL	MANUFACTURER/REMARKS
1	AS REQD.	3001	FRAME HEAD/SILL/JAMB	ALUM. 6063-T6	TRULITE
2	AS REQD.	3002	INTERMEDIATE MULLION (VERT/HORIZ)	ALUM. 6063-T6	TRULITE
3	AS REQD.	3003	GLAZING STOP	ALUM. 6063-T5	TRULITE
4	1/ CORNER	3004A	SHEAR BLOCK	ALUM. 6063-T6	1" LONG
5	AS REQD.	H-63	GLAZING GASKET	EPDM	-
6A	AS REQD.	DC995	SILICONE SEALANT	SILICONE	DOW CORNING
6B	AS REQD.	SSG4000	SILICONE SEALANT	SILICONE	GE (MOMENTIVE)
6C	AS REQD.	PROGLAZE SSG	SILICONE SEALANT	SILICONE	TREMCO
7	2/ CORNER	S14	#2-24 x 3/4" FLAT HEAD THREAD CUTTING SCREWS	-	-
8	2/ CORNER	P13	1/2-20 x 1-1/2" PAN HEAD MACHINE SCREWS	-	-
9	-	V2100	GLAZING FOAM TAPE	-	NORTON
9A	-	V2200	GLAZING FOAM TAPE	-	NORTON
10	AS REQD.	-	SETTING BLOCK (1/2" x 1/8" x 4" LONG)	EPDM	-
10A	AS REQD.	H62D	SETTING BLOCK (1/2" x 1/4" x 4" LONG)	EPDM	-
11	AS REQD.	3004A	ALUMINUM REINFORCEMENT	ALUM. 6063-T6	TRULITE



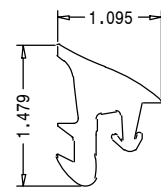
① FRAME HEAD/SILL/JAMB



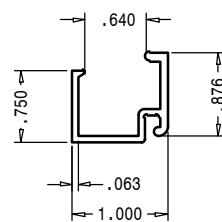
④ SHEAR BLOCK



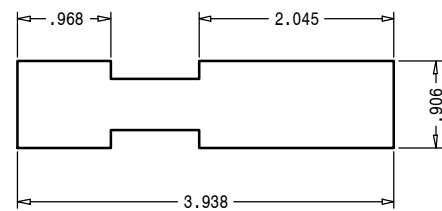
② FRAME INTERMEDIATE MULLION



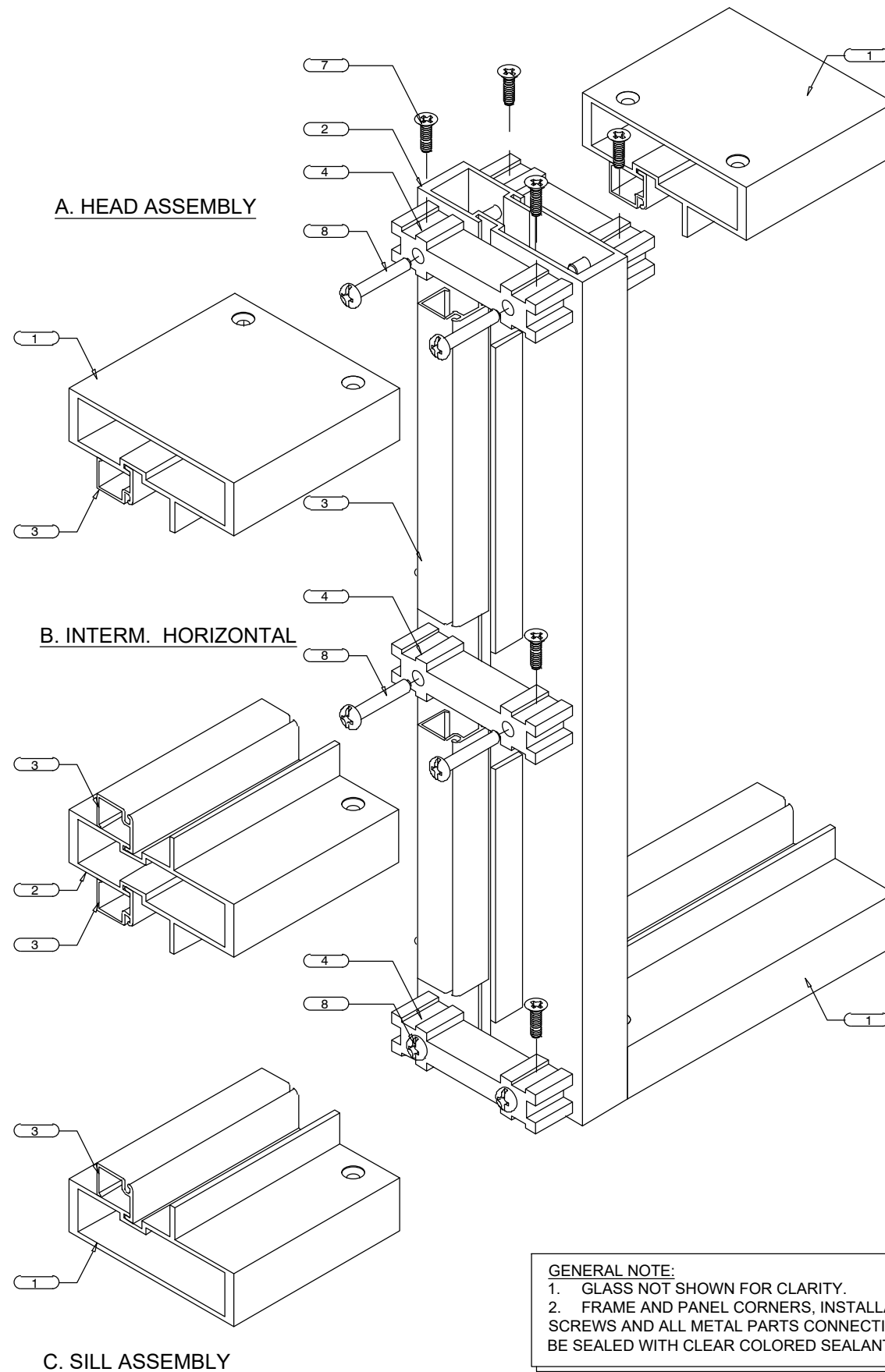
⑤ WEDGE-IN GASKET



③ GLAZING STOP (9/16" GLASS)



⑪ REINFORCEMENT



GENERAL NOTE:
 1. GLASS NOT SHOWN FOR CLARITY.
 2. FRAME AND PANEL CORNERS, INSTALLATION SCREWS AND ALL METAL PARTS CONNECTIONS TO BE SEALED WITH CLEAR COLORED SEALANT.



<http://www.trulite.com>

403 WESTPARK COURT, Suite 201
 PEACHTREE, GA 30269
 p. 800-432-8132 | f. 954-724-2083

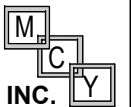
PRODUCT:

Resistor
3000 ALUMINUM
STOREFRONT WALL-LMI



REV#	DATE/REMARKS
Rev.3	ADD NEW GLASS INTERLAYER

ENGINEER:



MCY ENGINEERING, INC.
 GLAZING CONSULTANT

12781 MIRAMAR PARKWAY #301
 MIRAMAR, FL 33027
 P: 305-271-0117
 Email: MCY@MCYEngineering.com
 www.MCYEngineering.com

STAMP:



September 6th, 2022

PRODUCT CONTROL APPROVAL:

DRAWN: James

DRAWING No:

DATE: 08/29/22

11 OF 11

DWG: TAD14-01