

TYPICAL ELEVATIONS

**SERIES 3300 ALUMINUM STOREFRONT SYSTEM**

- THIS PRODUCT HAS BEEN DESIGNED AND TESTED TO COMPLY WITH THE REQUIREMENTS OF 2018 INTERNATIONAL RESIDENTIAL CODE 2018 INTERNATIONAL BUILDING CODE AND FLORIDA BUILDING CODE 7TH EDITION (2020) INCLUDING HIGH VELOCITY HURRICANE ZONE (HVHZ).
- STOREFRONT SYSTEM IS RATED FOR LARGE & SMALL MISSILE IMPACT (LEVEL D). SHUTTERS ARE NOT REQUIRED.
- THIS SYSTEM MAY BE USED IN CONJUNCTION WITH TDI LISTED EVALUATION REPORTS FOR TRULITE ENTRANCE DOORS.
- WOOD BUCKS BY OTHERS, MUST BE ANCHORED PROPERLY TO TRANSFER LOADS TO THE STRUCTURE.
- ANCHORS SHALL BE AS LISTED, SPACED AS SHOWN ON DETAILS, ANCHORS EMBEDMENT TO BASE MATERIAL SHALL BE BEYOND WALL DRESSING OR STUCCO.
- ANCHORING OR LOADING CONDITIONS NOT SHOWN IN THESE DETAILS ARE NOT PART OF THIS APPROVAL.
- METAL STRUCTURES NOT BY TRULITE GLASS AND ALUMINUM SOLUTION TO BE DESIGNED TO SUPPORT THE LOADS IMPOSED BY GLAZING SYSTEM AND TO BE TRANSFER SUCH LOADS TO THE BUILDING MAIN STRUCTURE.
- MATERIALS INCLUDING BUT NOT LIMITED TO STEEL/METAL SCREWS, THAT COME INTO CONTACT WITH OTHER DISSIMILAR MATERIALS SHALL MEET THE REQUIREMENTS OF THE 2018 INTERNATIONAL BUILDING CODE, THE 2018 INTERNATIONAL RESIDENTIAL CODE AND THE FLORIDA BUILDING CODE 7TH EDITION (2020).
- ULTIMATE LOAD OBTAINED FROM ASCE 7-16, MULTIPLY BY 0.6 SHALL BE LESS THAN OR EQUAL TO MAX. DESIGN LOAD IN THIS DOCUMENT. THE DESIGN LOADS SHOWN IN THIS DOCUMENT ARE ALLOWABLE DESIGN LOADS.

**INSTRUCTIONS:**

- USE CHARTS AS FOLLOWS.
- STEP 1:** DETERMINE DESIGN WIND LOAD REQUIREMENTS BASED ON WIND VELOCITY, BLDG. HEIGHT, WIND ZONE USING APPLICABLE ASCE 7-16 STANDARD.
  - STEP 2:** SEE CHARTS ON SHEET 3 FOR DESIGN LOAD CAPACITY OF DESIRED GLASS SIZE BASED ON APPLICABLE WIND DURATION.
  - STEP 3:** CHECK MULLION AND JAMB CAPACITY FOR A GIVEN SPACING AND HEIGHT USING CHARTS ON SHEET 4 THRU 5. THE CAPACITY SHOULD EXCEED THE DESIGN LOAD.
  - STEP 4:** USING CHART ON SHEETS 6, 7 & 8 SELECT ANCHOR OPTION WITH DESIGN RATING MORE THAN DESIGN LOAD SPECIFIED IN STEP 1 ABOVE.
  - STEP 5:** THE LOWEST VALUE RESULTING FROM STEPS 2, 3 AND 4 SHALL APPLY TO ENTIRE SYSTEM.

**Trulite**  
GLASS & ALUMINUM SOLUTIONS™  
http://www.trulite.com  
403 WESTPARK COURT, SUITE 201  
PEACHTREE CITY, GA 30269  
p. 800-432-8132

PRODUCT:  
**Resistor 3300**  
STOREFRONT WALL  
(LARGE AND SMALL MISSILE IMPACT)  
**Resistor**  
PRODUCT SERIES

REVN	DATE/REMARKS
03	ADD NEW GLASS SPACER AND GLASS SPACER

ENGINEER:  
**MCY ENGINEERING, INC.**  
GLAZING CONSULTANT  
12781 MIRAMAR PARKWAY, SUITE. 301  
MIRAMAR, FL. 33027  
P: 305-271-0117  
Email: MCY@mcyengineering.com  
www.MCYEngineering.com

STAMP:  
YIPING WANG, P.E.  
STATE REGISTRATION  
PE-TX #136420  
**YIPING WANG**  
136420  
PROFESSIONAL ENGINEER  
September 6th, 2022

PRODUCT CONTROL APPROVAL:

DRAWN:MCY	DRAWING No:
DATE:08/29/2022	1 OF 15
DWG: AD21-03	

PRODUCT:

**Resistor  
3300**

STOREFRONT WALL  
(LARGE AND SMALL  
MISSILE IMPACT)


**Resistor**  
PRODUCT SERIES

REVN	DATE/REMARKS
03	ADD NEW GLASS SPACER AND GLASS SPACER

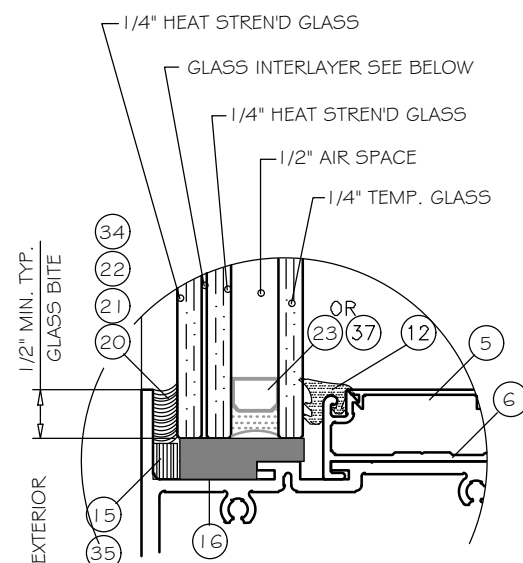
ENGINEER:

  
**MCY ENGINEERING, INC.**  
 GLAZING CONSULTANT  
 12781 MIRAMAR PARKWAY, SUITE. 301  
 MIRAMAR, FL. 33027  
 P: 305-271-0117  
 Email: MCY@mcyengineering.com  
 www.MCYEngineering.com

STAMP:

  
 YIPING WANG, P.E.  
 STATE REGISTRATION  
 PE-TX #136420  
**YIPING WANG**  
 136420  
 LICENSED  
 PROFESSIONAL ENGINEER  
 September 6th, 2022

PRODUCT CONTROL APPROVAL:



**INSULATED LAMINATED GLASS**  
1-5/16" NOMINAL OVERALL

INSULATED LAMINATED GLASS INTERLAYER TYPE:

TYPE "G1": 0.090" KURARAY SENTRYGLAS INTERLAYER BY "KURARAY AMERICA, INC."

TYPE "G2": 0.100" SAFLEX PVB HP CLEAR AND COLOR GLASS INTERLAYER BY "EASTMAN CHEMICAL COMPANY"

TYPE "G3": 0.090" SAFLEX PVB CLEAR AND COLOR GLASS INTERLAYER BY "EASTMAN CHEMICAL COMPANY"

TYPE "G7": 0.075" SAFLEX STORM CP INTERLAYER BY "EASTMAN CHEMICAL COMPANY"

TYPE "G8": 0.090" EVERLAM™ PVB CLEAR INTERLAYER

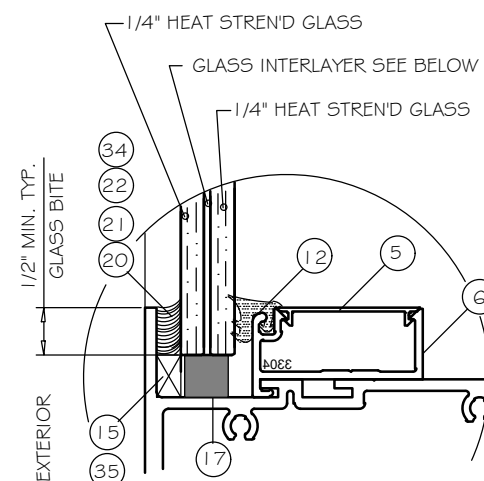
TYPE "G9": 0.09" EVERLAM™ LAM50 PVB GLASS INTERLAYER

TYPE "G10": 0.09" EVERLAM™ SUPER TOUGH PVB INTERLAYER

GASKET USED IN THIS FENESTRATION PRODUCT ARE IN COMPLIANCE WITH ASTM STANDARD C864

PRIMARY SEALANT: P18 - POLYISOBUTYLENE.  
SECONDARY SEALANT: SILICONE SEALANT

SEE SHEET 3 FOR D.L.O. WIDTHS AND HEIGHTS. V.S. DESIGN LOADS.  
GLASS COMPLIES WITH ASTM E1300-09 (3 SEC. GUSTS)



**LAMINATED GLASS**  
9/16" NOMINAL OVERALL

LAMINATED GLASS INTERLAYER TYPE:

TYPE "G4": 0.090" KURARAY SENTRYGLAS INTERLAYER BY "KURARAY AMERICA, INC."

TYPE "G5": 0.100" SAFLEX PVB HP CLEAR AND COLOR GLASS INTERLAYER BY "EASTMAN CHEMICAL COMPANY"

TYPE "G6": 0.090" SAFLEX PVB CLEAR AND COLOR GLASS INTERLAYER BY "EASTMAN CHEMICAL COMPANY"

TYPE "G11": 0.09" EVERLAM™ LAM50 PVB GLASS INTERLAYER

TYPE "G12": 0.09" EVERLAM™ SUPER TOUGH PVB INTERLAYER

SILICONE OPTIONS:

(20) - DOWSIL 995

(21) - TREMCO PROGLAZE SSG

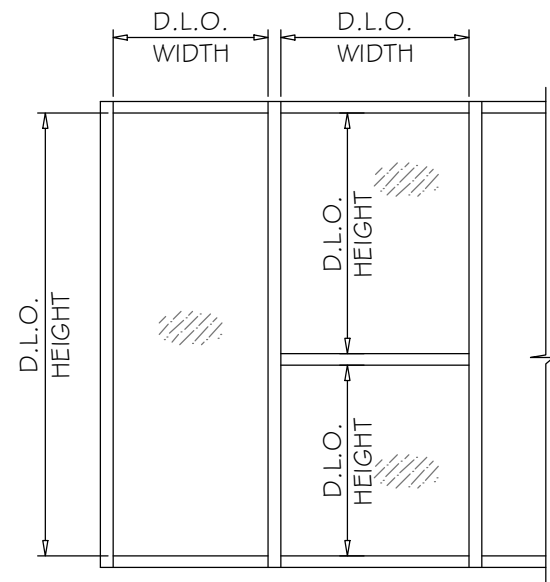
(22) - SIKA SIKASIL SG-10

(34) - DOWSIL 983

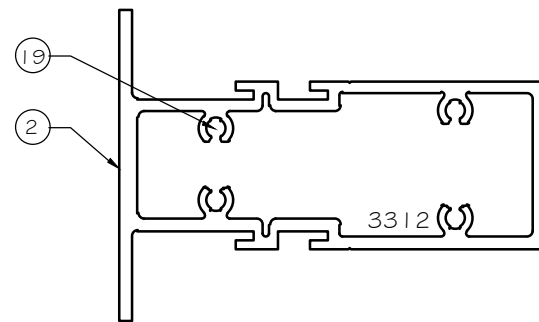
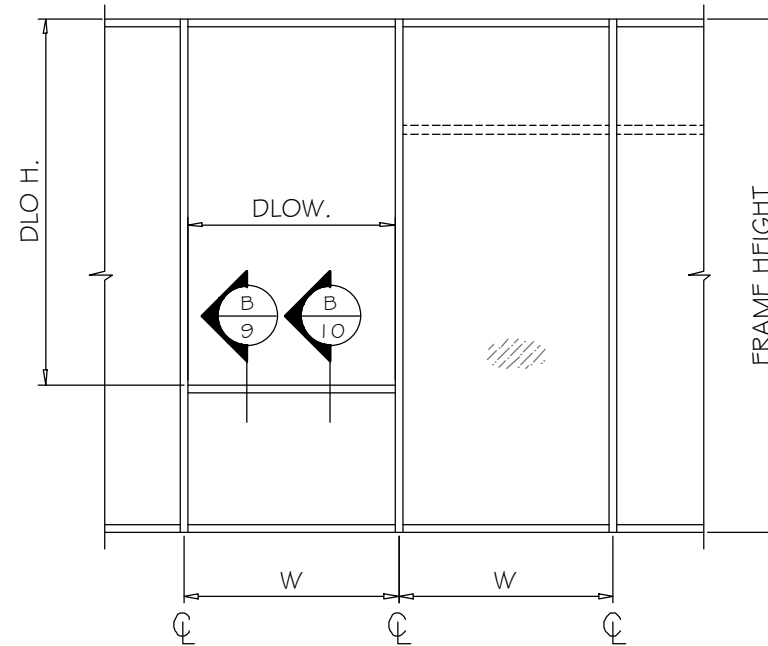
GLAZING OPTION

DRAWN:MCY	DRAWING No:
DATE:08/29/2022	2 OF 15
DWG: AD21-03	

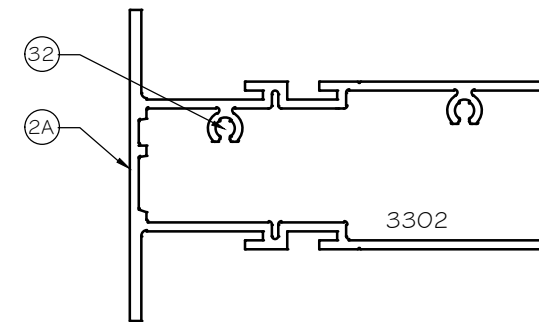
GLASS LOAD CAPACITY			
GLASS TYPES	NOMINAL DIMS. (IN)		LOAD CAPACITY Pdall (psf)
	D.L.O. WIDTH MAX.	D.L.O. HEIGHT MAX.	EXT.(+) INT.(-)
G8	44.75"	91"	±65
G2, G3	44.75"	82.25"	±75
G4, G5, G6	56.75"	91"	±80
G7	56.75"	91"	±85
G1	51.5"	91"	±94.0
G1	44.75"	121"	±94.0
G9, G11	39.25"	92"	+65/-75
G10, G12	45.25"	92"	+70/-85



STEP 2: GLASS LOAD TABLES



MAX. D.L.O. SIZE ABOVE HORIZONTAL MULLION HORIZONTAL MULLION 3312					
C-C	DLO W.	DLO H.	DLO AREA	ALLOW. Pd (PSF)	
(IN)	(IN)	(IN)	(FT ^ 2)	EXT.(+)	INT.(-)
60"	56 3/4"	59 3/8"	23.4	85.0	85.0



MAX. D.L.O. SIZE ABOVE HORIZONTAL MULLION HORIZONTAL MULLION 3302					
C-C	DLO W.	DLO H.	DLO AREA	ALLOW. Pd (PSF)	
(IN)	(IN)	(IN)	(FT ^ 2)	EXT.(+)	INT.(-)
48"	44 3/4"	38 1/2"	11.96	75	75



http://www.trulite.com

403 WESTPARK COURT, SUITE 201  
PEACHTREE CITY, GA 30269  
p. 800-432-8132

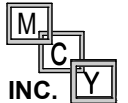
PRODUCT:

**Resistor  
3300**  
STOREFRONT WALL  
(LARGE AND SMALL  
MISSILE IMPACT)



REVN	DATE/REMARKS
03	ADD NEW GLASS SPACER AND GLASS SPACER

ENGINEER:



**MCY ENGINEERING, INC.**  
GLAZING CONSULTANT  
12781 MIRAMAR PARKWAY, SUITE. 301  
MIRAMAR, FL. 33027  
P: 305-271-0117  
Email: MCY@mcyengineering.com  
www.MCYEngineering.com

STAMP:



September 6th, 2022

PRODUCT CONTROL APPROVAL:

DRAWN:MCY  
DATE:08/29/2022  
DWG: AD21-03

DRAWING No:  
**3 OF 15**

PRODUCT:

## Resistor 3300

STOREFRONT WALL  
(LARGE AND SMALL  
MISSILE IMPACT)

**Resistor**  
PRODUCT SERIES

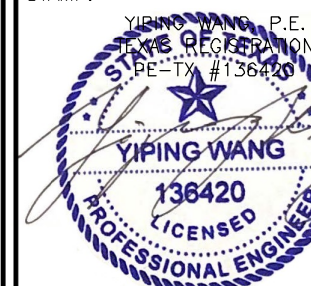
REVN	DATE/REMARKS
03	ADD NEW GLASS SPACER AND GLASS SPACER

ENGINEER:

**MCY ENGINEERING, INC.**  
GLAZING CONSULTANT

12781 MIRAMAR PARKWAY, SUITE. 301  
MIRAMAR, FL. 33027  
P: 305-271-0117  
Email: MCY@mcyengineering.com  
www.MCYEngineering.com

STAMP:



September 6th, 2022

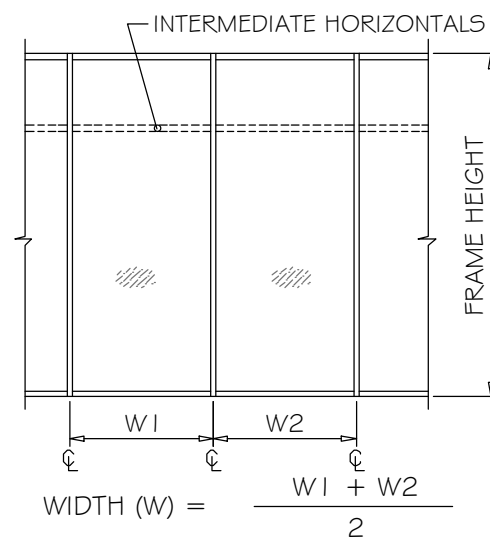
PRODUCT CONTROL APPROVAL:

DRAWN:MCY  
DATE:08/29/2022  
DWG: AD21-03

DRAWING No:  
**4 OF 15**

### MULLION LOAD CAPACITY - PSF

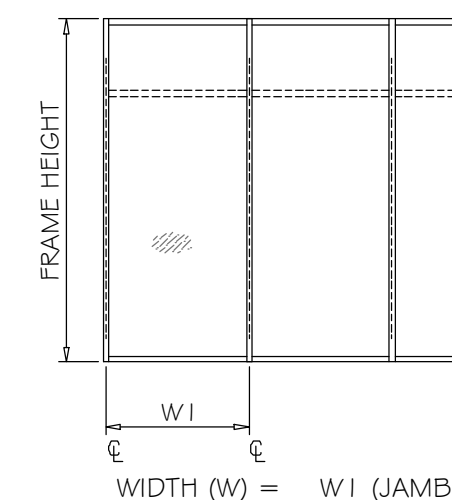
NOMINAL DIMS. (IN)		MULLION 'M1'	MULLION 'M2'
WIDTH (W)	FRAME HEIGHT	EXT. (+) INT. (-)	EXT. (+) INT. (-)
60"	90"	85.0	-
54"	96"	85.0	-
60"	96"	79.6	-
48"	120"	-	94.0
42"	126"	-	94.0
48"	126"	-	92.4



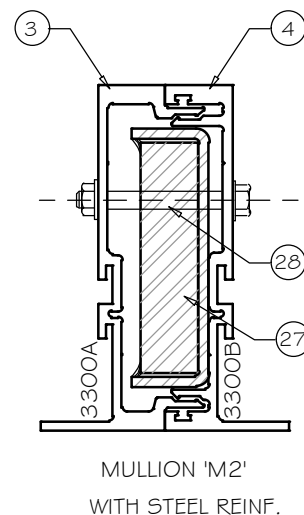
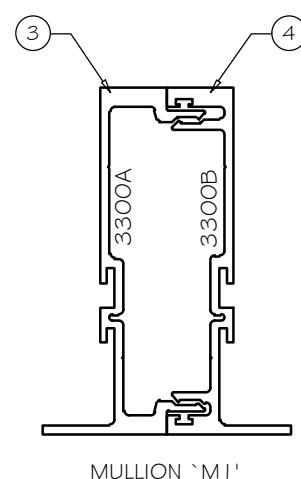
VERTICAL MULLION WITH OR WITHOUT  
INTERMEDIATE HORIZONTALS

### JAMB MULLION LOAD CAPACITY - PSF

NOMINAL DIMS. (IN)		JAMB MULLION 'J1'	JAMB MULLION 'J2'	JAMB MULLION 'J4'	JAMB MULLION 'J1R'
WIDTH (W)	FRAME HEIGHT	EXT. (+) INT. (-)	EXT. (+) INT. (-)	EXT. (+) INT. (-)	EXT. (+) INT. (-)
60"	96"	85.0	85.0	85.0	-
48"	126"	75.0	-	-	94.0



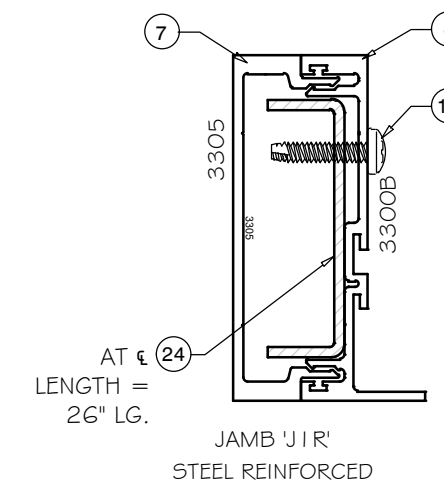
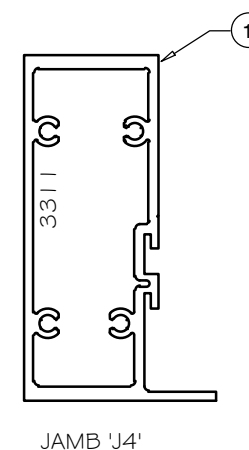
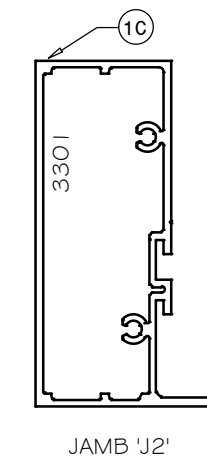
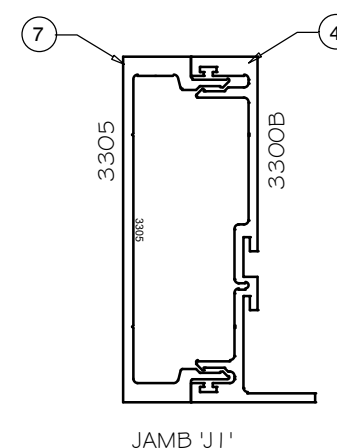
JAMB WITH OR WITHOUT  
INTERMEDIATE HORIZONTALS



(2) BOLTS @24" O.C.

STEEL CHANNEL LENGTH MIN =  
FRAME HEIGHT - 24"  
STEEL BAR LENGTH MIN =  
FRAME HEIGHT - 30.125"

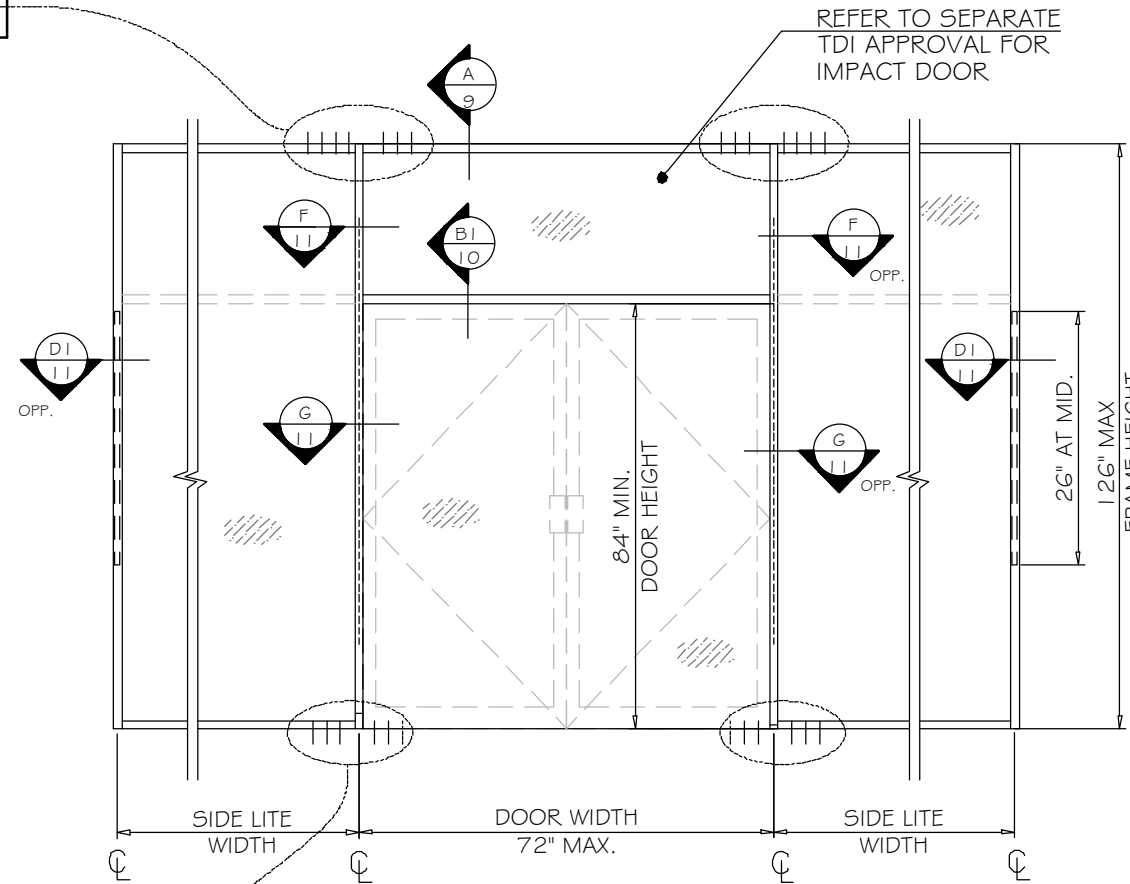
STEP 3: MULLION LOAD CAPACITIES



STEP 3: JAMB LOAD CAPACITIES

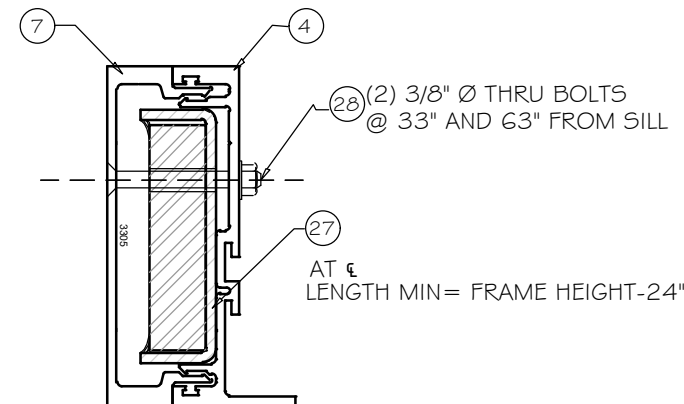
ANCHORS TYPE	SHIM SPACE	NUMBER OF ANCHORS REQUIRED AT END
AA & A	3/8"	10
BB, B & D	3/8"	7
A	1/4"	6
B	1/4"	5
C & D	1/4"	4

DOOR JAMB MULLION LOAD CAPACITY - PSF				
NOMINAL DIMS. (IN)				DESIGN LOAD CAPACITY - PSF
SIDE LITE WIDTH MAX.	DOOR WIDTH MAX.	FRAME HEIGHT MAX.	DOOR HEIGHT MIN.	EXT.(+) INT.(-)
48	72	126	84	75



ANCHORS TYPE	SHIM SPACE	NUMBER OF ANCHORS REQUIRED AT SF SILL	NUMBER OF ANCHORS REQUIRED AT DOOR SILL (1/4" SHIM)
AA & A	3/8"	4	3
BB & B	3/8"	4	2
A	1/4"	4	2
B	1/4"	3	2

TYPICAL ELEVATION



DOOR MULLION W/ STL REINF.

STEP 3: DOOR JAMB MULLION LOAD CAPACITIES



http://www.trulite.com

403 WESTPARK COURT, SUITE 201  
PEACHTREE CITY, GA 30269  
p. 800-432-8132

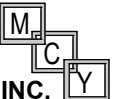
PRODUCT:

**Resistor 3300**  
STOREFRONT WALL  
(LARGE AND SMALL MISSILE IMPACT)



REVN	DATE/REMARKS
03	ADD NEW GLASS SPACER AND GLASS SPACER

ENGINEER:



**MCY ENGINEERING, INC.**  
GLAZING CONSULTANT  
12781 MIRAMAR PARKWAY, SUITE. 301  
MIRAMAR, FL. 33027  
P: 305-271-0117  
Email: MCY@mcyengineering.com  
www.MCYEngineering.com

STAMP:



September 6th, 2022

PRODUCT CONTROL APPROVAL:

DRAWN:MCY  
DATE:08/29/2022  
DWG: AD21-03

DRAWING No:  
**5 OF 15**

**TYPICAL ANCHORS:**

SEE ELEVATIONS FOR SPACING

**TYPE 'AA'** 1/4" DIA. TAPCON BY 'ITW' (F<sub>u</sub>=125 KSI, F<sub>y</sub>=100 KSI)  
 INTO 2BY WOOD BUCKS OR WOOD STRUCTURES  
 1-1/2" MIN. PENETRATION INTO WOOD  
 OR THRU WOOD BUCK INTO CONCRETE WITH 1 3/4" EMBED

**TYPE 'BB'** 1/4" DIA. ULTRACON+ BY 'DEWALT' (F<sub>u</sub>=164 KSI, F<sub>y</sub>=148 KSI)  
 INTO 2BY WOOD BUCKS OR WOOD STRUCTURES  
 1-1/2" MIN. PENETRATION INTO WOOD  
 OR THRU WOOD BUCK INTO CONCRETE WITH 1 3/4" EMBED

**TYPE 'A'** 1/4" DIA. TAPCON BY 'ITW' (F<sub>u</sub>=120 KSI, F<sub>y</sub>=92 KSI)  
 DIRECTLY INTO CONCRETE  
 1-3/4" MIN. EMBED INTO CONCRETE

**TYPE 'B'** 1/4" DIA. ULTRACON + BY 'DEWALT' (F<sub>u</sub>=164 KSI, F<sub>y</sub>=148 KSI)  
 DIRECTLY INTO CONCRETE  
 1-3/4" MIN. EMBED INTO CONCRETE.

**TYPE 'C'** #14 SMS (GRADE 2 CRS)  
 INTO APPROVED MULLION (1/8" MIN. THK.) (6063-T6 MIN.)

**TYPE 'D'** #14 TEKS SELF-DRILLING SCREWS (GRADE 5 CRS)  
 INTO METAL STRUCTURE  
 STEEL : 12 GA. MIN. (F<sub>y</sub> = 36 KSI MIN.)  
 ALUMINUM : 1/8" THK. MIN. (6063-T6 MIN.)  
 (STEEL IN CONTACT WITH ALUMINUM TO BE PLATED OR PAINTED)

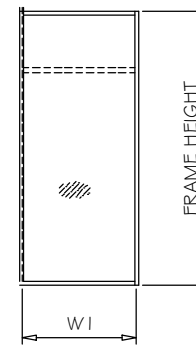
**TYPICAL EDGE DISTANCE:**

INTO CONCRETE = 2-1/2" MIN.  
 INTO WOOD STRUCTURE = 1" MIN.  
 INTO METAL STRUCTURE = 3/4" MIN.

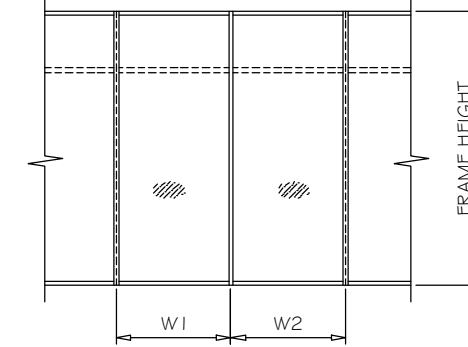
CONCRETE f<sub>c</sub> = 3000 PSI MIN. (NORMAL WEIGHT, UNCRACKED CONCRETE)  
 WOOD SG=0.55 MIN.

**SEALANTS:**

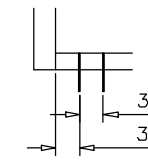
FRAME CORNERS SEALED WITH DOW CORNING DOWSIL 1199 OR EQUAL COMPATIBLE.



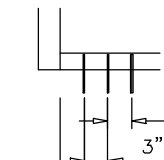
WIDTH (W) = W1 (JAMB)



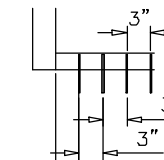
WIDTH (W) =  $\frac{W1 + W2}{2}$



AA2, BB2, A2, B2, C2, D2



AA3, BB3, A3, B3, C3, D3



AA4, BB4, A4, B4, C4, D4

ANCHORS TYPES: SEE SHEET 6 FOR DESCRIPTION

- AA2 = (2) ANCHORS TYPE 'AA' AT EACH SIDE OF MULLION OR JAMB
- BB2 = (2) ANCHORS TYPE 'BB' AT EACH SIDE OF MULLION OR JAMB
- A2 = (2) ANCHORS TYPE 'A' AT EACH SIDE OF MULLION OR JAMB
- B2 = (2) ANCHORS TYPE 'B' AT EACH SIDE OF MULLION OR JAMB
- C2 = (2) ANCHORS TYPE 'C' AT EACH SIDE OF MULLION OR JAMB
- D2 = (2) ANCHORS TYPE 'D' AT EACH SIDE OF MULLION OR JAMB

- AA3 = (3) ANCHORS TYPE 'AA' AT EACH SIDE OF MULLION OR JAMB
- BB3 = (3) ANCHORS TYPE 'BB' AT EACH SIDE OF MULLION OR JAMB
- A3 = (3) ANCHORS TYPE 'A' AT EACH SIDE OF MULLION OR JAMB
- B3 = (3) ANCHORS TYPE 'B' AT EACH SIDE OF MULLION OR JAMB
- C3 = (3) ANCHORS TYPE 'C' AT EACH SIDE OF MULLION OR JAMB
- D3 = (3) ANCHORS TYPE 'D' AT EACH SIDE OF MULLION OR JAMB

- AA4 = (4) ANCHORS TYPE 'AA' AT EACH SIDE OF MULLION OR JAMB
- BB4 = (4) ANCHORS TYPE 'BB' AT EACH SIDE OF MULLION OR JAMB
- A4 = (4) ANCHORS TYPE 'A' AT EACH SIDE OF MULLION OR JAMB
- B4 = (4) ANCHORS TYPE 'B' AT EACH SIDE OF MULLION OR JAMB
- C4 = (4) ANCHORS TYPE 'C' AT EACH SIDE OF MULLION OR JAMB
- D4 = (4) ANCHORS TYPE 'D' AT EACH SIDE OF MULLION OR JAMB

**STEP 4: ANCHOR LOAD CAPACITIES**



http://www.trulite.com

403 WESTPARK COURT, SUITE 201  
 PEACHTREE CITY, GA 30269  
 p. 800-432-8132

PRODUCT:

**Resistor 3300**  
 STOREFRONT WALL  
 (LARGE AND SMALL  
 MISSILE IMPACT)



REVN	DATE/REMARKS
03	ADD NEW GLASS SPACER AND GLASS SPACER

ENGINEER:



**MCY ENGINEERING, INC.**  
 GLAZING CONSULTANT  
 12781 MIRAMAR PARKWAY, SUITE. 301  
 MIRAMAR, FL. 33027  
 P: 305-271-0117  
 Email: MCY@mcyengineering.com  
 www.MCYEngineering.com

STAMP:



PRODUCT CONTROL APPROVAL:

DRAWN:MCY  
 DATE:08/29/2022  
 DWG: AD21-03

DRAWING No:  
**6 OF 15**

ANCHOR LOAD CAPACITY - PSF EXT.(+) & INT.(-)										
NOMINAL DIMS. (IN)		1/4" SHIM								
WIDTH (W)	FRAME HEIGHT	ANCHORS TYPE 'A'		ANCHORS TYPE 'B'		ANCHORS TYPE 'C'		ANCHORS TYPE 'D'		
		'A2'	'A3'	'A4'	'B2'	'B3'	'C2'	'C3'	'D2'	'D3'
30"	66"	94.0	94.0	94.0	94.0	94.0	94.0	94.0	94.0	94.0
36"		94.0	94.0	94.0	94.0	94.0	94.0	94.0	94.0	94.0
42"		94.0	94.0	94.0	94.0	94.0	94.0	94.0	94.0	94.0
48"		94.0	94.0	94.0	94.0	94.0	94.0	94.0	94.0	94.0
54"		94.0	94.0	94.0	94.0	94.0	94.0	94.0	94.0	94.0
60"		90.0	94.0	94.0	94.0	94.0	94.0	94.0	94.0	94.0
30"	72"	94.0	94.0	94.0	94.0	94.0	94.0	94.0	94.0	94.0
36"		94.0	94.0	94.0	94.0	94.0	94.0	94.0	94.0	94.0
42"		94.0	94.0	94.0	94.0	94.0	94.0	94.0	94.0	94.0
48"		94.0	94.0	94.0	94.0	94.0	94.0	94.0	94.0	94.0
54"		91.7	94.0	94.0	94.0	94.0	94.0	94.0	94.0	94.0
60"		82.5	94.0	94.0	94.0	94.0	94.0	94.0	94.0	94.0
30"	78"	94.0	94.0	94.0	94.0	94.0	94.0	94.0	94.0	94.0
36"		94.0	94.0	94.0	94.0	94.0	94.0	94.0	94.0	94.0
42"		94.0	94.0	94.0	94.0	94.0	94.0	94.0	94.0	94.0
48"		94.0	94.0	94.0	94.0	94.0	94.0	94.0	94.0	94.0
54"		84.6	94.0	94.0	94.0	94.0	94.0	94.0	94.0	94.0
60"		76.2	94.0	94.0	94.0	94.0	94.0	94.0	94.0	94.0
30"	84"	94.0	94.0	94.0	94.0	94.0	94.0	94.0	94.0	94.0
36"		94.0	94.0	94.0	94.0	94.0	94.0	94.0	94.0	94.0
42"		94.0	94.0	94.0	94.0	94.0	94.0	94.0	94.0	94.0
48"		88.4	94.0	94.0	94.0	94.0	94.0	94.0	94.0	94.0
54"		78.6	94.0	94.0	94.0	94.0	94.0	94.0	94.0	94.0
60"		70.7	94.0	94.0	89.1	94.0	94.0	94.0	94.0	94.0
30"	90"	94.0	94.0	94.0	94.0	94.0	94.0	94.0	94.0	94.0
36"		94.0	94.0	94.0	94.0	94.0	94.0	94.0	94.0	94.0
42"		94.0	94.0	94.0	94.0	94.0	94.0	94.0	94.0	94.0
48"		82.5	94.0	94.0	94.0	94.0	94.0	94.0	94.0	94.0
54"		73.4	94.0	94.0	92.4	94.0	94.0	94.0	94.0	94.0
60"		66.0	94.0	94.0	83.2	94.0	94.0	94.0	94.0	94.0
30"	96"	94.0	94.0	94.0	94.0	94.0	94.0	94.0	94.0	94.0
36"		94.0	94.0	94.0	94.0	94.0	94.0	94.0	94.0	94.0
42"		88.4	94.0	94.0	94.0	94.0	94.0	94.0	94.0	94.0
48"		77.4	94.0	94.0	94.0	94.0	94.0	94.0	94.0	94.0
54"		68.8	94.0	94.0	86.7	94.0	94.0	94.0	94.0	94.0
60"		61.9	92.8	94.0	78.0	94.0	93.2	94.0	93.2	94.0
30"	102"	94.0	94.0	94.0	94.0	94.0	94.0	94.0	94.0	94.0
36"		94.0	94.0	94.0	94.0	94.0	94.0	94.0	94.0	94.0
42"		83.2	94.0	94.0	94.0	94.0	94.0	94.0	94.0	94.0
48"		72.8	94.0	94.0	91.8	94.0	94.0	94.0	94.0	94.0
30"	108"	94.0	94.0	94.0	94.0	94.0	94.0	94.0	94.0	94.0
36"		91.7	94.0	94.0	94.0	94.0	94.0	94.0	94.0	94.0
42"		78.6	94.0	94.0	94.0	94.0	94.0	94.0	94.0	94.0
48"		68.8	94.0	94.0	86.7	94.0	94.0	94.0	94.0	94.0

ANCHOR LOAD CAPACITY - PSF EXT.(+) & INT.(-)										
NOMINAL DIMS. (IN)		1/4" SHIM								
WIDTH (W)	FRAME HEIGHT	ANCHORS TYPE 'A'		ANCHORS TYPE 'B'		ANCHORS TYPE 'C'		ANCHORS TYPE 'D'		
		'A2'	'A3'	'A4'	'B2'	'B3'	'C2'	'C3'	'D2'	'D3'
30"	114"	94.0	94.0	94.0	94.0	94.0	94.0	94.0	94.0	94.0
36"		86.9	94.0	94.0	94.0	94.0	94.0	94.0	94.0	94.0
42"		74.5	94.0	94.0	93.8	94.0	94.0	94.0	94.0	94.0
48"		65.2	94.0	94.0	82.1	94.0	94.0	94.0	94.0	94.0
30"	120"	94.0	94.0	94.0	94.0	94.0	94.0	94.0	94.0	94.0
36"		82.5	94.0	94.0	94.0	94.0	94.0	94.0	94.0	94.0
42"		70.7	94.0	94.0	89.1	94.0	94.0	94.0	94.0	94.0
48"		61.9	92.8	94.0	78.0	94.0	93.2	94.0	93.2	94.0
30"	126"	94.0	94.0	94.0	94.0	94.0	94.0	94.0	94.0	94.0
36"		78.6	94.0	94.0	94.0	94.0	94.0	94.0	94.0	94.0
42"		67.4	94.0	94.0	84.9	94.0	94.0	94.0	94.0	94.0
48"		59.0	88.4	94.0	74.3	94.0	88.8	94.0	88.8	94.0

STEP 4: ANCHOR LOAD CAPACITIES



GLASS & ALUMINUM SOLUTIONS™

http://www.trulite.com

403 WESTPARK COURT, SUITE 201  
PEACHTREE CITY, GA 30269  
p. 800-432-8132

PRODUCT:

**Resistor  
3300**  
STOREFRONT WALL  
(LARGE AND SMALL  
MISSILE IMPACT)




REVN	DATE/REMARKS
03	ADD NEW GLASS SPACER AND GLASS SPACER

ENGINEER:



**MCY ENGINEERING, INC.**  
GLAZING CONSULTANT  
12781 MIRAMAR PARKWAY, SUITE. 301  
MIRAMAR, FL. 33027  
P: 305-271-0117  
Email: MCY@mcyengineering.com  
www.MCYEngineering.com

STAMP:



September 6th, 2022

PRODUCT CONTROL APPROVAL:

DRAWN:MCY	DRAWING No:
DATE:08/29/2022	7 OF 15
DWG: AD21-03	

ANCHOR LOAD CAPACITY - PSF EXT.(+) & INT.(-)							
NOMINAL DIMS. (IN)		3/8" SHIM ANCHORS TYPE 'AA' & 'A'			3/8" SHIM ANCHORS TYPE 'BB' & 'B' & 'D'		
WIDTH (W)	FRAME HEIGHT	'AA2'/A2'	'AA3'/A3'	'AA4'/A4'	'BB2'/B2'/D2'	'BB3'/B3'/D3'	'BB4'/B4'/D4'
30"	66"	94.0	94.0	94.0	94.0	94.0	94.0
36"		94.0	94.0	94.0	94.0	94.0	94.0
42"		83.1	94.0	94.0	94.0	94.0	94.0
48"		72.7	94.0	94.0	92.6	94.0	94.0
54"		64.6	94.0	94.0	82.3	94.0	94.0
60"		58.2	87.3	94.0	74.1	94.0	94.0
30"	72"	94.0	94.0	94.0	94.0	94.0	94.0
36"		88.9	94.0	94.0	94.0	94.0	94.0
42"		76.2	94.0	94.0	94.0	94.0	94.0
48"		66.7	94.0	94.0	84.9	94.0	94.0
54"		59.3	88.9	94.0	75.5	94.0	94.0
60"		53.3	80.0	94.0	67.9	94.0	94.0
30"	78"	94.0	94.0	94.0	94.0	94.0	94.0
36"		82.1	94.0	94.0	94.0	94.0	94.0
42"		70.3	94.0	94.0	89.6	94.0	94.0
48"		61.5	92.3	94.0	78.4	94.0	94.0
54"		54.7	82.1	94.0	69.7	94.0	94.0
60"		49.2	73.8	94.0	62.7	94.0	94.0
30"	84"	91.4	94.0	94.0	94.0	94.0	94.0
36"		76.2	94.0	94.0	94.0	94.0	94.0
42"		65.3	94.0	94.0	83.2	94.0	94.0
48"		57.1	85.7	94.0	72.8	94.0	94.0
54"		50.8	76.2	94.0	64.7	94.0	94.0
60"		45.7	68.6	91.4	58.2	87.4	94.0
30"	90"	85.3	94.0	94.0	94.0	94.0	94.0
36"		71.1	94.0	94.0	90.6	94.0	94.0
42"		61.0	91.4	94.0	77.6	94.0	94.0
48"		53.3	80.0	94.0	67.9	94.0	94.0
54"		47.4	71.1	94.0	60.4	90.6	94.0
60"		42.7	64.0	85.3	54.3	81.5	94.0
30"	96"	80.0	94.0	94.0	94.0	94.0	94.0
36"		66.7	94.0	94.0	84.9	94.0	94.0
42"		57.1	85.7	94.0	72.8	94.0	94.0
48"		50.0	75.0	94.0	63.7	94.0	94.0
54"		44.4	66.7	88.9	56.6	84.9	94.0
60"		40.0	60.0	80.0	51.0	76.5	94.0
30"	102"	75.3	94.0	94.0	94.0	94.0	94.0
36"		62.7	94.0	94.0	79.9	94.0	94.0
42"		53.8	80.7	94.0	68.5	94.0	94.0
48"		47.1	70.6	94.0	59.9	89.9	94.0
30"	108"	71.1	94.0	94.0	90.6	94.0	94.0
36"		59.3	88.9	94.0	75.5	94.0	94.0
42"		50.8	76.2	94.0	64.7	94.0	94.0
48"		44.4	66.7	88.9	56.6	84.9	94.0

ANCHOR LOAD CAPACITY - PSF EXT.(+) & INT.(-)								
NOMINAL DIMS. (IN)		3/8" SHIM ANCHORS TYPE 'AA' & 'A'			3/8" SHIM ANCHORS TYPE 'BB' & 'B' & 'D'			
WIDTH (W)	FRAME HEIGHT	'AA2'/A2'	'AA3'/A3'	'AA4'/A4'	'BB2'/B2'/D2'	'BB3'/B3'/D3'	'BB4'/B4'/D4'	
30"	114"	67.4	94.0	94.0	85.8	94.0	94.0	
36"		56.1	84.2	94.0	71.5	94.0	94.0	
42"		48.1	72.2	94.0	61.3	92.0	94.0	
48"		42.1	63.2	84.2	53.6	80.5	94.0	
30"	120"	64.0	94.0	94.0	81.5	94.0	94.0	
36"		53.3	80.0	94.0	67.9	94.0	94.0	
42"		45.7	68.6	91.4	58.2	87.4	94.0	
48"		40.0	60.0	80.0	51.0	76.5	94.0	
30"	126"	61.0	91.4	94.0	77.6	94.0	94.0	
36"		50.8	76.2	94.0	64.7	94.0	94.0	
42"		43.5	65.3	87.1	55.5	83.2	94.0	
48"			38.1	57.1	76.2	48.5	72.8	94.0

STEP 4: ANCHOR LOAD CAPACITIES



http://www.trulite.com

403 WESTPARK COURT, SUITE 201  
PEACHTREE CITY, GA 30269  
p. 800-432-8132

PRODUCT:

**Resistor  
3300**  
STOREFRONT WALL  
(LARGE AND SMALL  
MISSILE IMPACT)



REV#	DATE/REMARKS
03	ADD NEW GLASS SPACER AND GLASS SPACER

ENGINEER:



**MCY ENGINEERING, INC.**  
GLAZING CONSULTANT  
12781 MIRAMAR PARKWAY, SUITE. 301  
MIRAMAR, FL. 33027  
P: 305-271-0117  
Email: MCY@mcyengineering.com  
www.MCYEngineering.com

STAMP:



September 6th, 2022

PRODUCT CONTROL APPROVAL:

DRAWN:MCY	DRAWING No:
DATE:08/29/2022	8 OF 15
DWG: AD21-03	



PRODUCT:

## Resistor 3300

STOREFRONT WALL  
(LARGE AND SMALL  
MISSILE IMPACT)

**Resistor**  
PRODUCT SERIES

REVN	DATE/REMARKS
03	ADD NEW GLASS SPACER AND GLASS SPACER

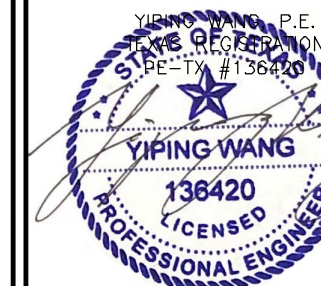
ENGINEER:



**MCY ENGINEERING, INC.**  
GLAZING CONSULTANT

12781 MIRAMAR PARKWAY, SUITE. 301  
MIRAMAR, FL. 33027  
P: 305-271-0117  
Email: MCY@mcyengineering.com  
www.MCYEngineering.com

STAMP:

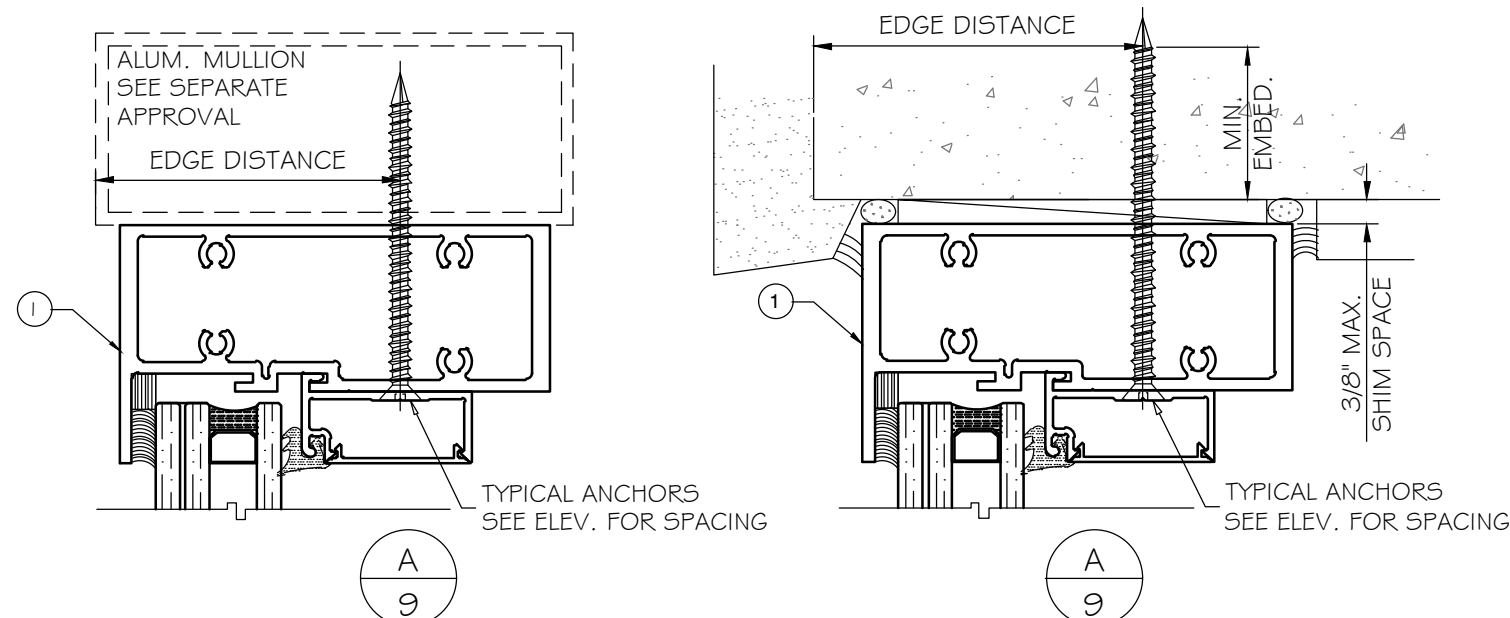
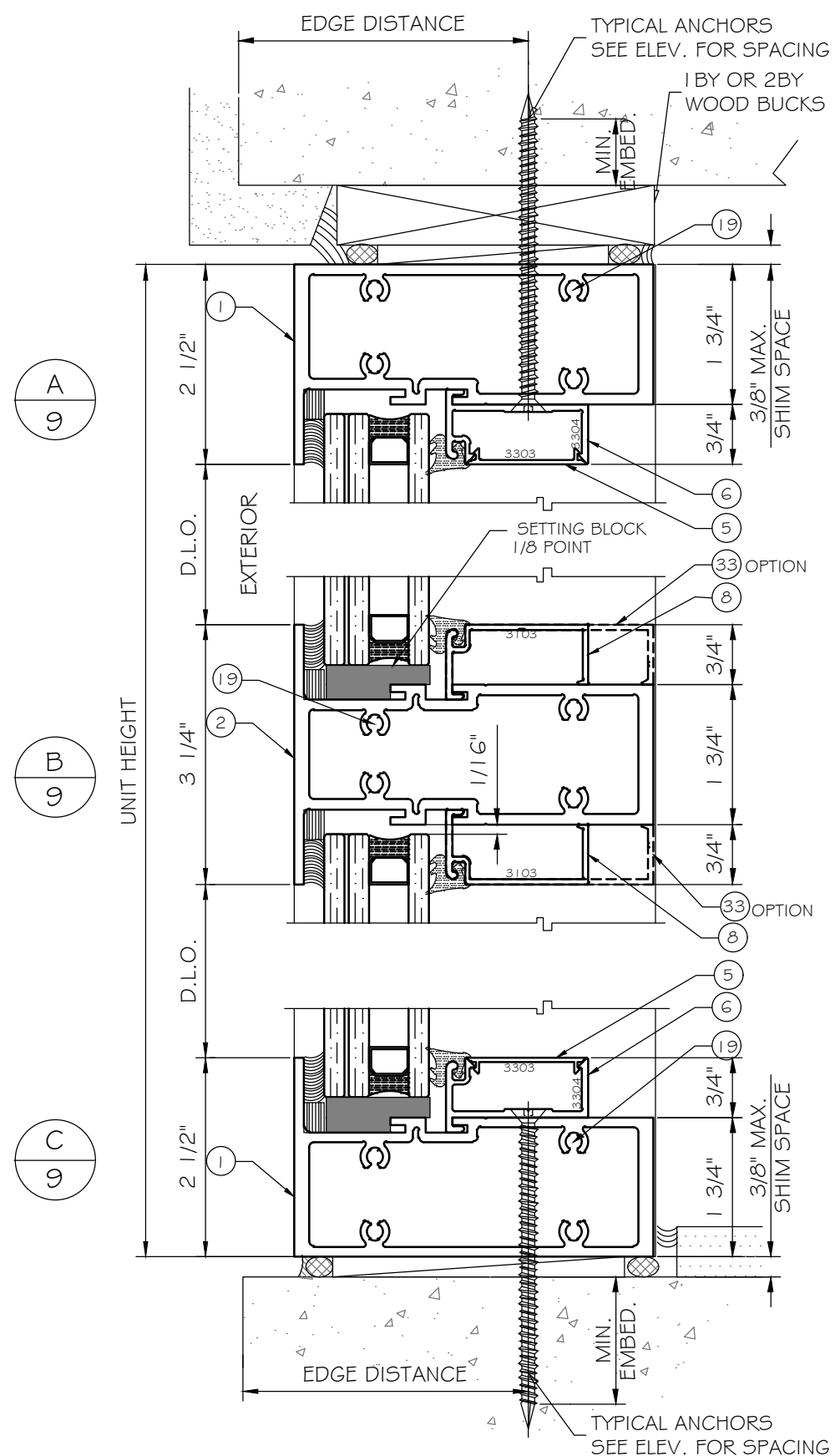


September 6th, 2022

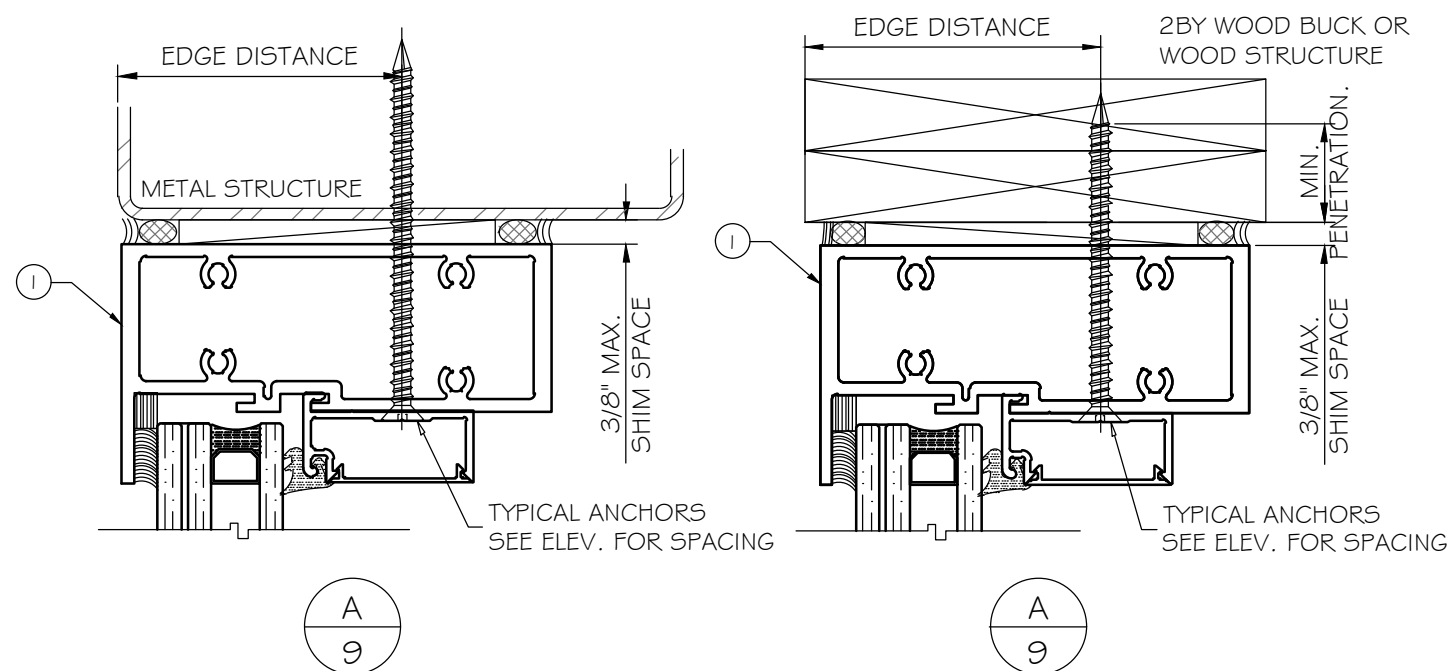
PRODUCT CONTROL APPROVAL:

DRAWN:MCY  
DATE:08/29/2022  
DWG: AD21-03

DRAWING No:  
**9 OF 15**

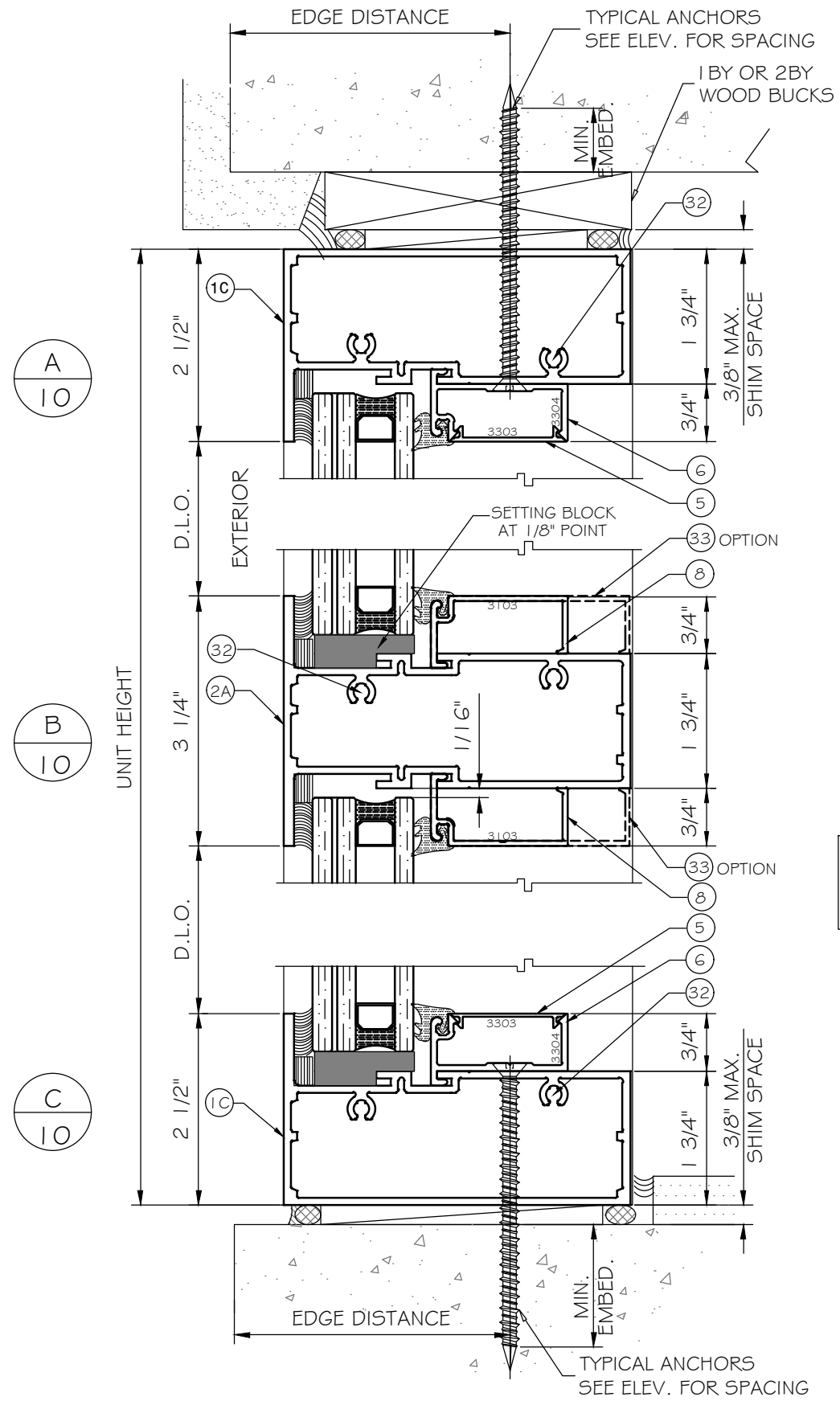


WOOD BUCKS AND METAL STRUCTURE NOT BY TRULITE.  
MUST BE DESIGNED AND ANCHORED PROPERLY TO SUSTAIN LOADS  
IMPOSED BY GLAZING SYSTEM AND TRANSFER THEM TO THE  
BUILDING STRUCTURE.

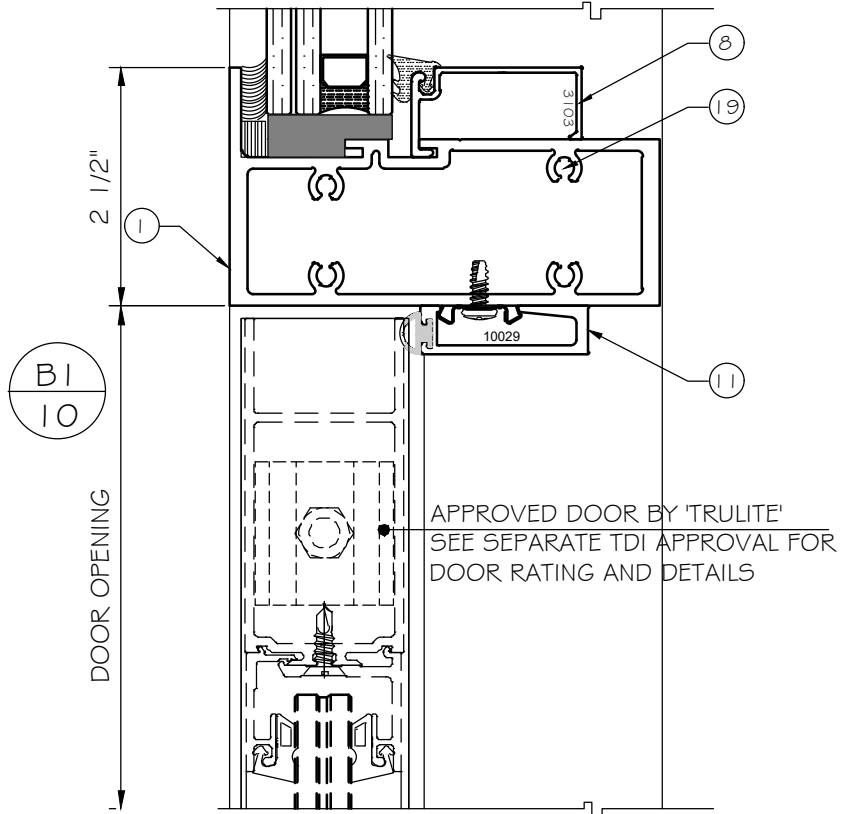


DRAWN:MCY  
DATE:08/29/2022  
DWG: AD21-03

DRAWING No:  
**9 OF 15**



WOOD BUCKS AND METAL STRUCTURE NOT BY TRULITE.  
MUST SUSTAIN LOADS IMPOSED BY GLAZING SYSTEM  
AND TRANSFER THEM TO THE BUILDING STRUCTURE.



DESIGN LOAD LIMIT TO 85PSF MAX. WHEN HEAD  
& SILL USE EXTRUSION OF 3301.




<http://www.trulite.com>

403 WESTPARK COURT, SUITE 201  
PEACHTREE CITY, GA 30269  
p. 800-432-8132

PRODUCT:  
**Resistor 3300**  
STOREFRONT WALL  
(LARGE AND SMALL  
MISSILE IMPACT)



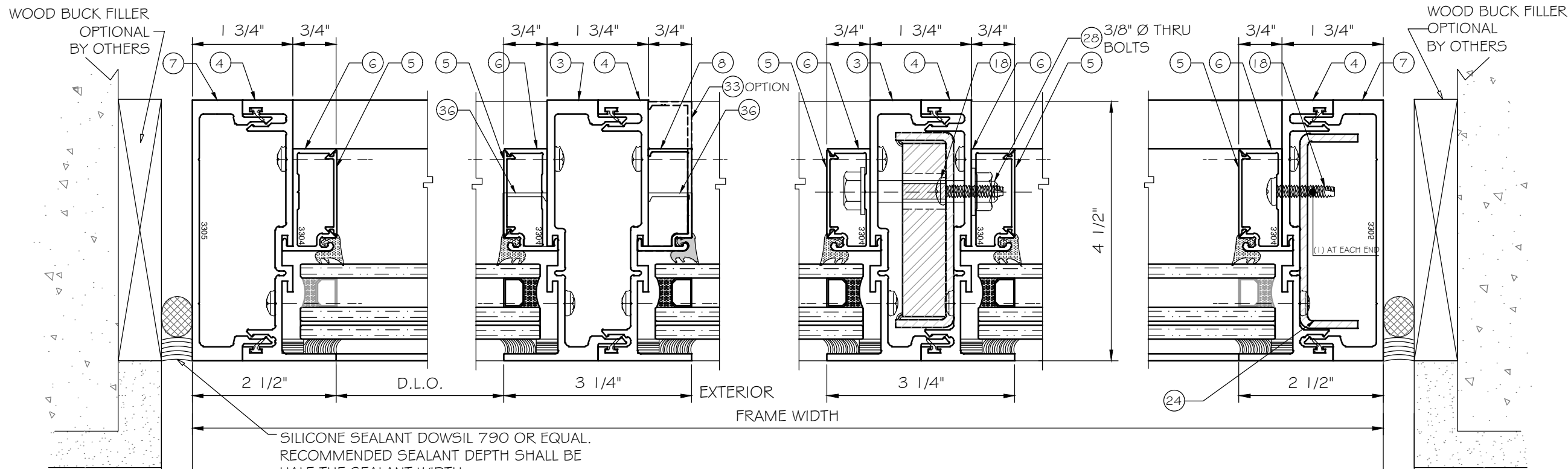
REVN	DATE/REMARKS
03	ADD NEW GLASS SPACER AND GLASS SPACER

ENGINEER:  
  
**MCY ENGINEERING, INC.**  
GLAZING CONSULTANT  
12781 MIRAMAR PARKWAY, SUITE. 301  
MIRAMAR, FL. 33027  
P: 305-271-0117  
Email: [MCY@mcyengineering.com](mailto:MCY@mcyengineering.com)  
[www.MCYEngineering.com](http://www.MCYEngineering.com)

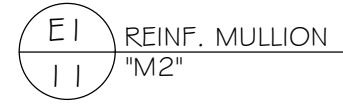
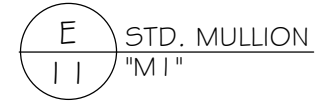
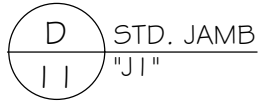
STAMP:  
  
YIPING WANG, P.E.  
STATE REGISTRATION  
PE-TX #136420  
YIPING WANG  
136420  
LICENSED PROFESSIONAL ENGINEER  
September 6th, 2022

PRODUCT CONTROL APPROVAL:

DRAWN:MCY	DRAWING No:
DATE:08/29/2022	10 OF 15
DWG: AD21-03	



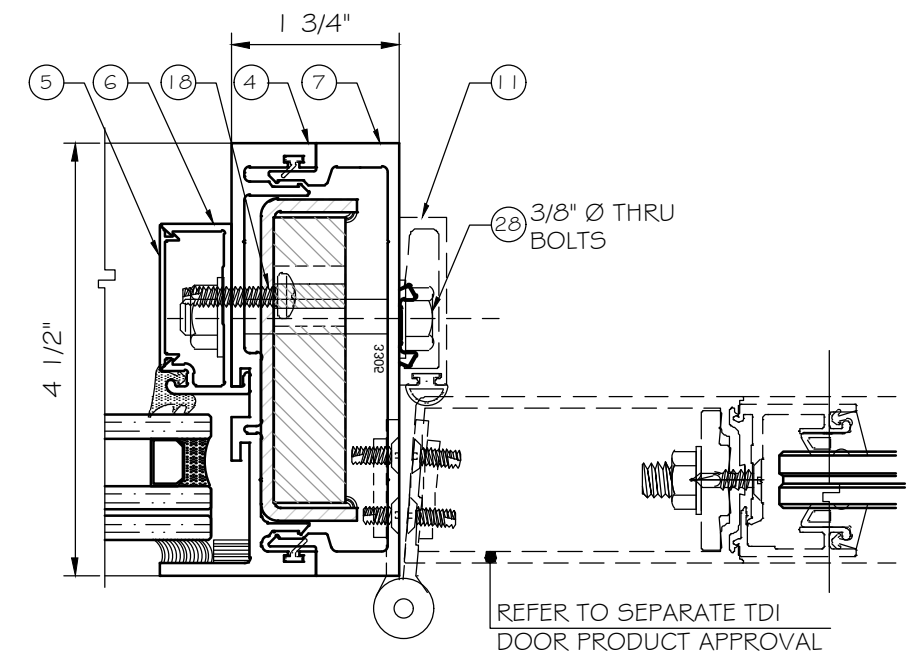
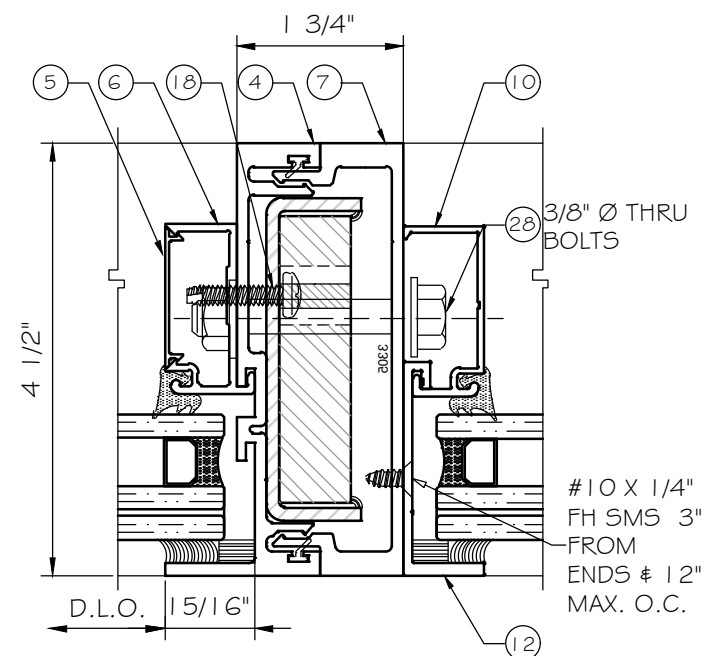
MIN. & MAX. GAP  
SEE CHART BELOW



MIN. & MAX. GAP  
SEE CHART BELOW

MAX. FRAME HEIGHT	GAP	
	MIN.	MAX.
78"	1/4"	1/2"
84"	1/4"	1/2"
96"	3/8"	1/2"
108"	3/8"	1/2"
120"	3/8"	1/2"
126"	3/8"	1/2"

ALTERNATE SEALANTS AT JAMB GAPS CAN BE DESIGNED BY ENGINEER OF RECORD BASED ON MANUFACTURER GUIDE LINES.



NOTE:  
1-5/16" GLAZING OPTION SHOWN.  
REFER TO SHEET 2 FOR 9/16" GLAZING OPTION.  
SILICONE SEALANT REFER TO ITEM (20) (21) (22) (34)

**Trulite**  
GLASS & ALUMINUM SOLUTIONS™  
http://www.trulite.com  
403 WESTPARK COURT, SUITE 201  
PEACHTREE CITY, GA 30269  
p. 800-432-8132

PRODUCT:  
**Resistor 3300**  
STOREFRONT WALL  
(LARGE AND SMALL MISSILE IMPACT)  
**Resistor**  
PRODUCT SERIES

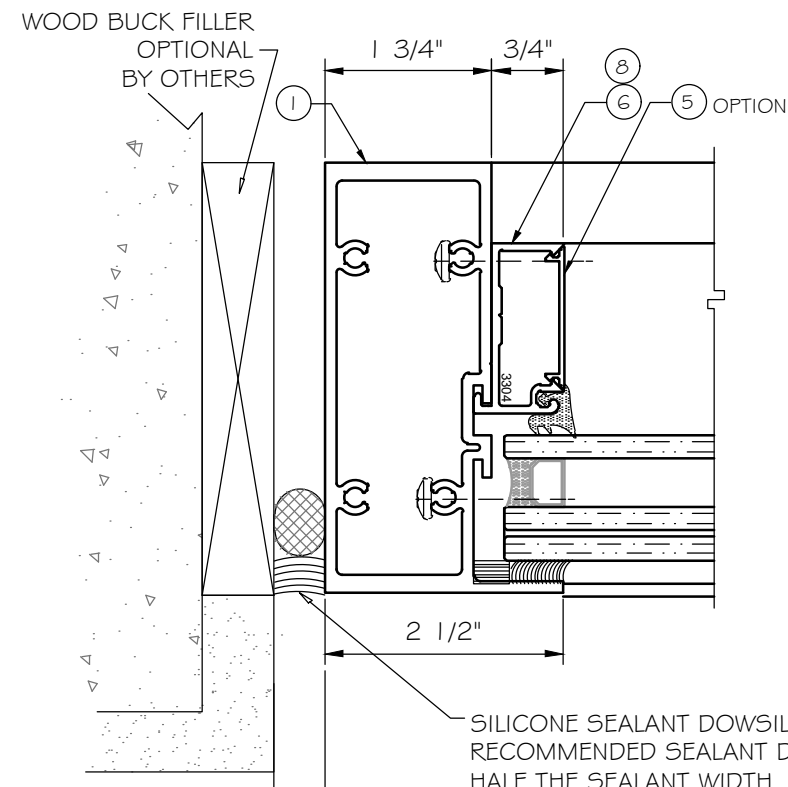
REVN	DATE/REMARKS
03	ADD NEW GLASS SPACER AND GLASS SPACER

ENGINEER:  
  
**MCY ENGINEERING, INC.**  
GLAZING CONSULTANT  
12781 MIRAMAR PARKWAY, SUITE. 301  
MIRAMAR, FL. 33027  
P: 305-271-0117  
Email: MCY@mcyengineering.com  
www.MCYEngineering.com

STAMP:  
  
YIPING WANG, P.E.  
STATE REGISTRATION  
PE-TX #136420  
YIPING WANG  
136420  
PROFESSIONAL ENGINEER  
September 6th, 2022

PRODUCT CONTROL APPROVAL:

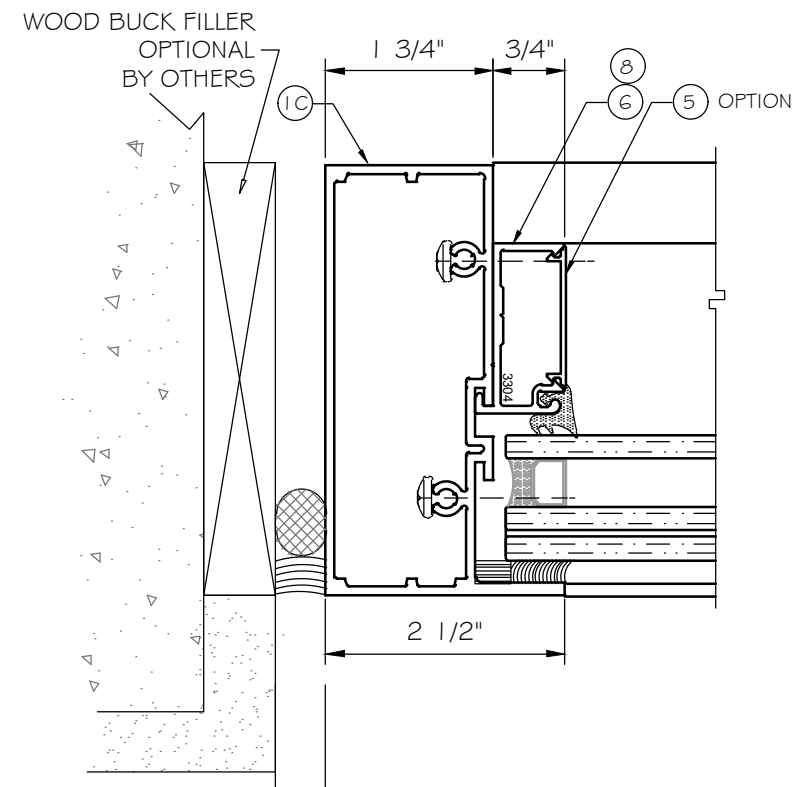
DRAWN:MCY	DRAWING No:
DATE:08/29/2022	11 OF 15
DWG: AD21-03	



MIN. & MAX. GAP  
SEE CHART ON  
SHEET 11

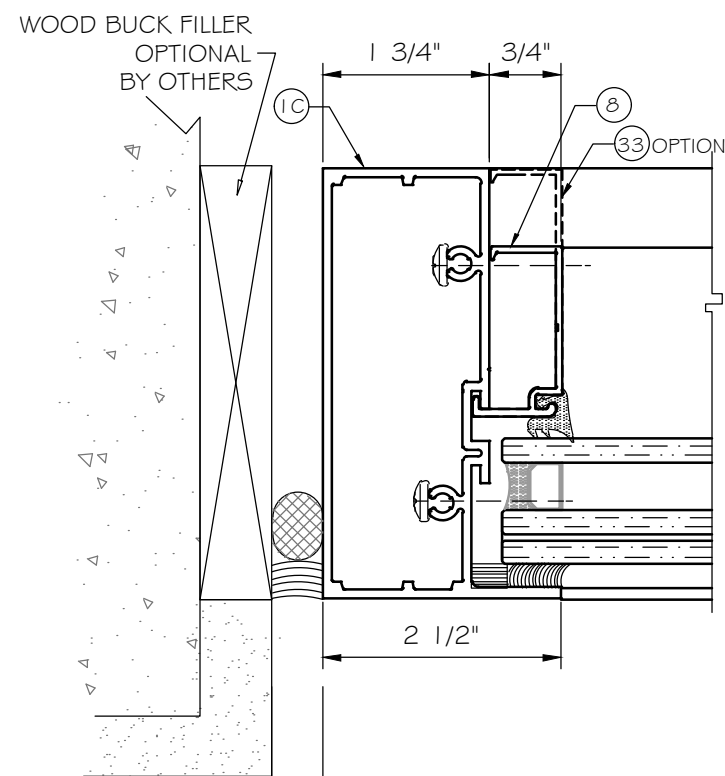
D3 JAMB OPTION  
12 "J4"

SILICONE SEALANT DOWSIL 790 OR EQUAL.  
RECOMMENDED SEALANT DEPTH SHALL BE  
HALF THE SEALANT WIDTH.



MIN. & MAX. GAP  
SEE CHART ON  
SHEET 11

D4 JAMB OPTION  
12 "J2"



MIN. & MAX. GAP  
SEE CHART ON SHEET 11

D4 JAMB OPTION  
12 "J2"

FREE STANDING JAMB OPTIONS  
SEE SHEET 4 FOR CAPACITIES

**Trulite**  
GLASS & ALUMINUM SOLUTIONS™

http://www.trulite.com

403 WESTPARK COURT, SUITE 201  
PEACHTREE CITY, GA 30269  
p. 800-432-8132

PRODUCT:

**Resistor  
3300**

STOREFRONT WALL  
(LARGE AND SMALL  
MISSILE IMPACT)

**Resistor**  
PRODUCT SERIES

REVN	DATE/REMARKS
03	ADD NEW GLASS SPACER AND GLASS SPACER

ENGINEER:



**MCY ENGINEERING, INC.**  
GLAZING CONSULTANT

12781 MIRAMAR PARKWAY, SUITE. 301  
MIRAMAR, FL. 33027  
P: 305-271-0117  
Email: MCY@mcyengineering.com  
www.MCYEngineering.com

STAMP:



September 6th, 2022

PRODUCT CONTROL APPROVAL:

DRAWN:MCY	DRAWING No:
DATE:08/29/2022	12 OF 15
DWG: AD21-03	

PRODUCT:

**Resistor  
3300**

STOREFRONT WALL  
(LARGE AND SMALL  
MISSILE IMPACT)

**Resistor**  
PRODUCT SERIES

REVN	DATE/REMARKS
03	ADD NEW GLASS SPACER AND GLASS SPACER

ENGINEER:



**MCY ENGINEERING, INC.**  
GLAZING CONSULTANT

12781 MIRAMAR PARKWAY, SUITE. 301  
MIRAMAR, FL. 33027  
P: 305-271-0117  
Email: MCY@mcyengineering.com  
www.MCYEngineering.com

STAMP:



September 6th, 2022

PRODUCT CONTROL APPROVAL:

DRAWN:MCY  
DATE:08/29/2022  
DWG: AD21-03

DRAWING No:  
**13 OF 15**

<p>①</p>	<p>①C</p>	<p>③</p>	<p>④</p>	<p>⑦</p>
<p>3311 HEAD/SILL/JAMB</p>	<p>3301 HEAD/SILL/JAMB</p>	<p>3300A MALE MULLION</p>	<p>3300B FEMALE MULLION</p>	<p>3305 MALE JAMB</p>
<p>⑨</p>	<p>⑩</p>	<p>⑪</p>	<p>⑥</p>	<p>⑤</p>
<p>3108 TRANSOM GLASS STOP GUTTER</p>	<p>3109 TRANSOM GLASS STOP</p>	<p>10029 APPLIED DOOR STOP</p>	<p>3304 OPEN BACK GLASS STOP</p>	<p>3303 GLASS STOP COVER</p>
<p>⑧</p>	<p>⑩⑥</p>	<p>⑩⑦</p>	<p>⑩⑫</p>	<p>⑩⑭</p>
<p>3103 GLASS STOP</p>	<p>H62J SETTING BLOCK, 1-5/16" GLASS</p>	<p>H62D SETTING BLOCK, 9/16" GLASS</p>	<p>RG-1 EXTERIOR GLAZING GASKET</p>	<p>RG-33 FINGER GASKET</p>
<p>⑩⑳④</p>	<p>⑩⑳⑦</p>			
<p>ST330 STEEL CHANNEL, A36</p>	<p>ST334 STEEL CHANNEL WITH 3/4"X3" STEEL BAR</p>			

PRODUCT:

**Resistor  
3300**

STOREFRONT WALL  
(LARGE AND SMALL  
MISSILE IMPACT)

**Resistor**  
PRODUCT SERIES

REVN	DATE/REMARKS
03	ADD NEW GLASS SPACER AND GLASS SPACER

ENGINEER:



**MCY ENGINEERING, INC.**  
GLAZING CONSULTANT

12781 MIRAMAR PARKWAY, SUITE. 301  
MIRAMAR, FL. 33027  
P: 305-271-0117  
Email: MCY@mcyengineering.com  
www.MCYEngineering.com

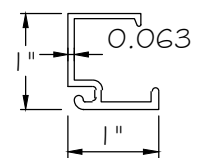
STAMP:



September 6th, 2022

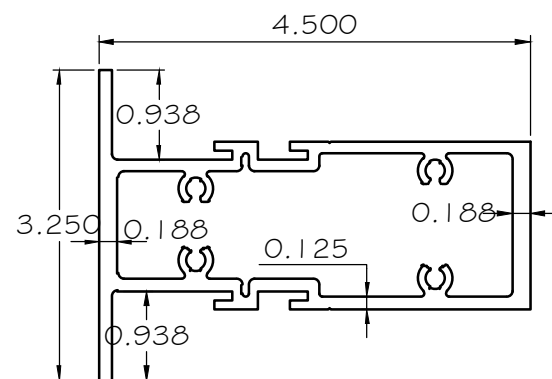
PRODUCT CONTROL APPROVAL:

DRAWN:MCY	DRAWING No:
DATE:08/29/2022	14 OF 15
DWG: AD21-03	



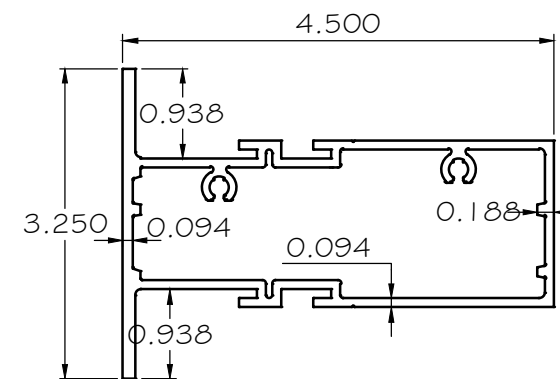
36

3003 GLASS STOP



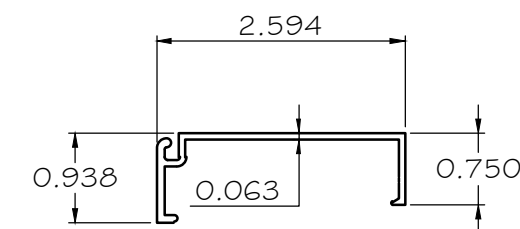
2

3312 INT. VERTICAL / HORIZONTAL



2A

3302 INT. VERTICAL / HORIZONTAL

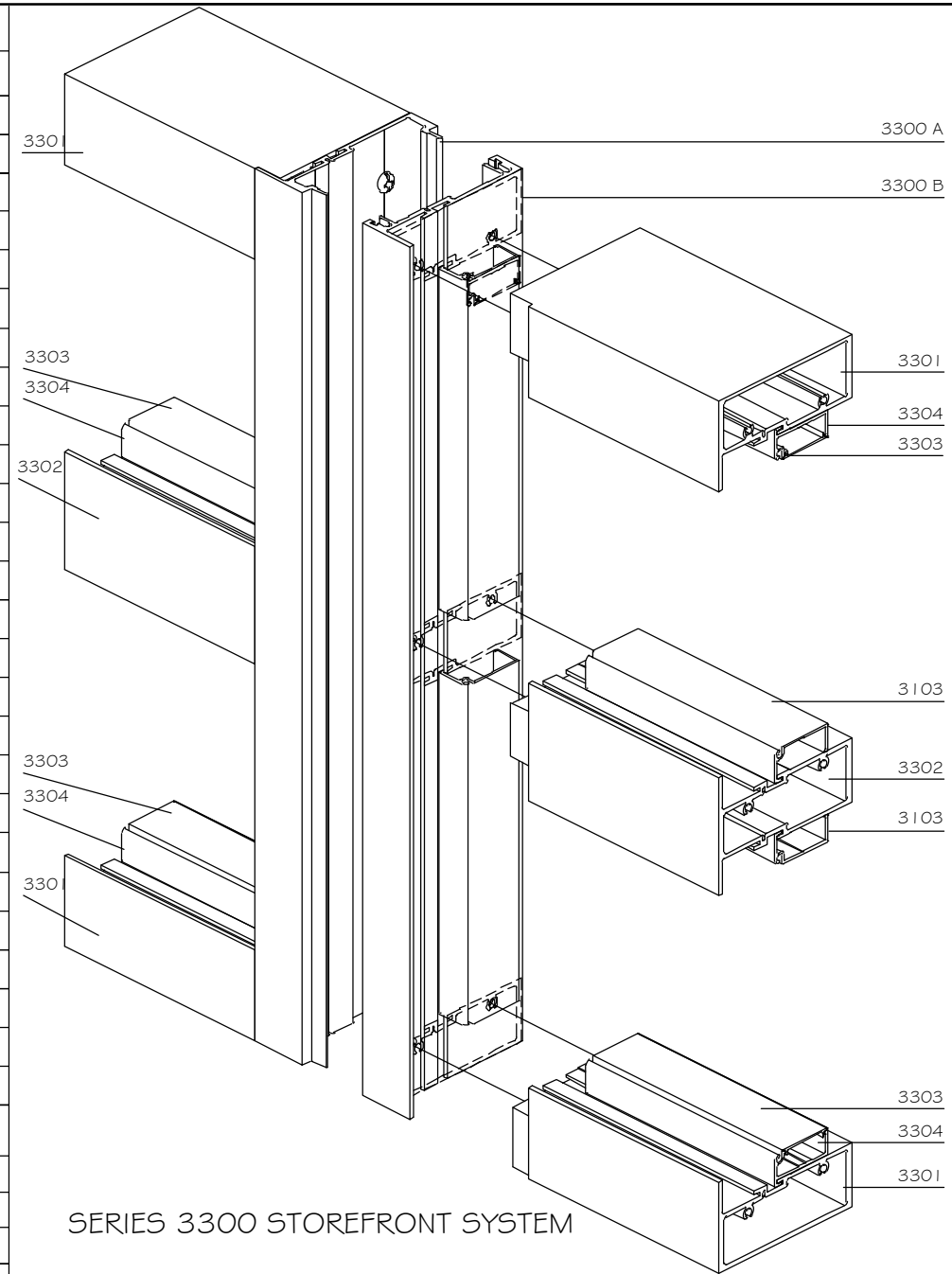


33

3103X GLASS STOP

**BILL OF MATERIAL**

ITEM	P/N	DESCRIPTION	DIMENSIONS	MATERIAL	MANUFACTURER
1	3311	HEAD / SILL / JAMB	2.500 x 4.500	6063-T6 ALUM	TRULITE
1C	3301	HEAD / SILL / JAMB	2.500 x 4.500	6063-T6 ALUM	TRULITE
2	3312	INT. HORIZONTAL / VERTICAL	3.250 x 4.500	6063-T6 ALUM	TRULITE
2A	3302	INT. HORIZONTAL / VERTICAL	3.250 x 4.500	6063-T6 ALUM	TRULITE
3	3300 A	MALE MULLION	2.124 x 4.530	6063-T6 ALUM	TRULITE
4	3300 B	FEMALE MULLION	1.625 x 4.530	6063-T6 ALUM	TRULITE
5	3303	GLASS STOP COVER	1.780 x 0.938	6063-T6 ALUM	TRULITE
6	3304	OPEN BACK GLASS STOP	1.50 x 0.188	6063-T6 ALUM	TRULITE
7	3305	MALE JAMB	1.50 x 0.188	6063-T6 ALUM	TRULITE
8	3103	GLASS STOP	1.780 x 0.938	6063-T6 ALUM	TRULITE
9	3108	TRANSOM GLASS STOP GUTTER	1.250 x 0.750	6063-T6 ALUM	TRULITE
10	3109	TRANSOM GLASS STOP	1.75 x 0.750	6063-T6 ALUM	TRULITE
11	10029	APPLIED DOOR STOP	1.750 x 0.500	6063-T6 ALUM	TRULITE
12	RG -1	EXTERIOR GLAZING GASKET	0.197 SPACE	EPDM	TRULITE
13	-	-	-	-	-
14	RG 33	FINGER GASKET	0.0186 SPACE	EPDM	TRULITE
15	V2108	GLAZING TAPE	0.250 x 0.375	GLAZING FOAM TAPE	ST. GOBAIN / NORTON
16	H62J	SETTING BLOCK FOR 1-5/16" GLASS	7/16" X 1 5/16" X 4"	EPDM	TRULITE
17	H62D	SETTING BLOCK FOR 9/16" GLASS	1/2" X 7/16" X 4"	EPDM	TRULITE
18	23126	RETENTION SCREW @ REINF	#12-24 x 3/8" PPH-23 M5	STEEL (ZINC COATED)	ALLOY FASTENER
19	2312650	ASSEMBLY SCREWS	#12-24-1" PPH-23 M5	STEEL (ZINC COATED)	ALLOY FASTENER
20	-	DOWSIL 995	-	SILICONE	DOW
21	-	PROGLAZE 55G	-	SILICONE	TREMCO
22	-	SIKASIL 5G-10	-	SILICONE	SIKA
23	-	HELIMA ALUTEC SERIES OR EQUAL	-	ALUMINUM	HELIMA HELVETION INT./ VARIES
24	ST330	STEEL CHANNEL (LENGTH = FH - 48" MIN.)	3.375 X 1.000 X .125 THK	STEEL A36 MIN.	VARIES
27	ST334	STEEL CHANNEL W/ FLAT BAR	3.375 X 1.0 X 0.125 # 3.0 X 0.75	STEEL A36 MIN.	VARIES
28	-	3/8" THRU-BOLT	-	STEEL A36 MIN.	VARIES
29	ST337	1.06"x4"x0.875"x316" STEEL CHANNEL	-	STEEL A36 MIN.	VARIES
30	3009	TRANSOM GLASS STOP	-	6063-T6 ALUM	TRULITE
32	23233	ASSEMBLY SCREWS	#14-20-1 1/2" PH TC M5	STEEL (ZINC COATED)	ALLOY FASTENER
33	3103X	GLASS STOP	-	6063-T6 ALUM	TRULITE
34	-	DOWSIL 983	-	SILICONE	DOW CHEMICAL
35	VK1826	GLAZING TAPE	0.250 x 0.375	GLAZING FOAM TAPE	CAPITAL TAPE
36	3003	GLASS STOP	-	6063-T6 ALUM	TRULITE
37	-	KODISPACE 45G WARM EDGE SPACER	-	THERMOPLASTIC	HB FULLER/KOMMERLING



SERIES 3300 STOREFRONT SYSTEM

NOTE:  
DETAIL ABOVE SHOWS CONNECTION OF HORIZONTAL FRAME MEMBERS TO VERTICAL FRAMES. JAMB AND MULLION CAN BE WITH OR WITHOUT REINFORCEMENT. SEE SHEETS 4 THRU 5 FOR OPTIONS.

GENERAL NOTE:  
1. GLASS NOT SHOWN FOR CLARITY.  
2. FRAME AND PANEL CORNERS, INSTALLATION SCREWS AND ALL METAL PARTS CONNECTIONS TO BE SEALED WITH CLEAR COLORED SEALANT.

**Trulite**  
GLASS & ALUMINUM SOLUTIONS™  
http://www.trulite.com  
403 WESTPARK COURT, SUITE 201  
PEACHTREE CITY, GA 30269  
p. 800-432-8132

PRODUCT:  
**Resistor 3300**  
STOREFRONT WALL  
(LARGE AND SMALL MISSILE IMPACT)  
**Resistor**  
PRODUCT SERIES

REVN	DATE/REMARKS
03	ADD NEW GLASS SPACER AND GLASS SPACER

ENGINEER:  
**MCY ENGINEERING, INC.**  
GLAZING CONSULTANT  
12781 MIRAMAR PARKWAY, SUITE. 301  
MIRAMAR, FL. 33027  
P: 305-271-0117  
Email: MCY@mcyengineering.com  
www.MCYEngineering.com

STAMP:  
YIPING WANG, P.E.  
STATE REGISTRATION  
PE-TX #136420  
**YIPING WANG**  
136420  
PROFESSIONAL ENGINEER  
September 6th, 2022

PRODUCT CONTROL APPROVAL:  
  
DRAWN:MCY  
DATE:08/29/2022  
DWG: AD21-03  
DRAWING No:  
**15 OF 15**