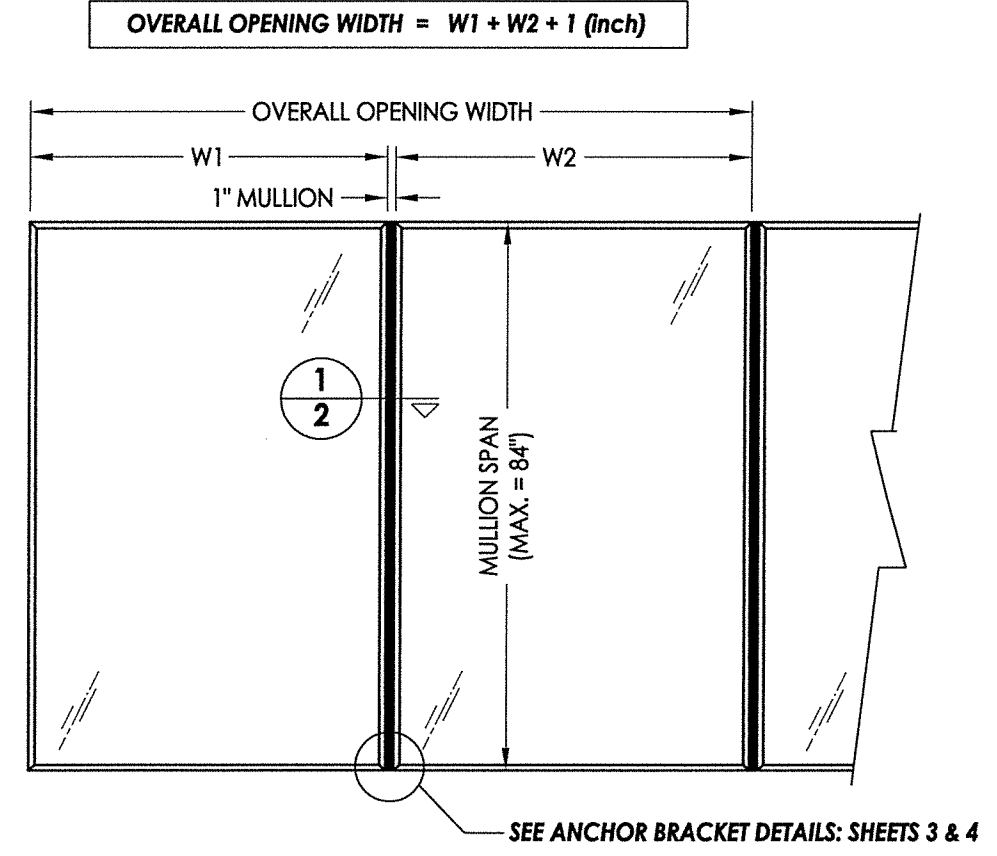


CLIPPED MULLION		TMP-2603 EXTRUDED ALUMINUM VERTICAL CLIPPED MULLION LOAD TABLE (PSF)																									
		OVERALL OPENING WIDTH																									
MAXIMUM MULLION LENGTH	84"	67.5	62.5	58.5	55.0	52.0	49.5	47.0	45.0	43.0	41.5	40.0	39.0	37.5	36.5	35.5	34.5	34.0	33.5	33.0	32.5	32.0	31.0	31.0	30.5	30.0	
	82"	72.5	67.5	63.0	59.0	56.0	53.5	51.0	48.5	46.5	45.0	43.5	42.0	40.5	39.5	38.5	37.5	37.0	36.0	35.5	35.0	34.5	34.0	33.5	33.5	33.0	33.0
	80"	75.0	73.0	68.0	64.0	60.5	57.5	55.0	52.5	50.0	48.5	47.0	45.5	44.0	43.0	42.0	41.0	40.0	39.5	38.5	38.0	37.5	37.0	37.0	36.5	36.5	36.5
	78"	75.0	75.0	74.0	69.0	66.0	62.0	60.0	57.0	55.0	53.0	51.0	50.0	48.0	47.0	46.0	45.0	44.0	43.0	42.5	42.5	41.5	41.0	40.5	40.5	40.5	40.0
	76"	75.0	75.0	75.0	74.5	71.5	67.0	64.0	61.0	59.5	57.0	55.5	53.5	52.5	50.5	50.0	49.0	48.0	47.5	46.5	46.0	45.5	45.0	44.5	44.5	44.5	44.0
	74"	75.0	75.0	75.0	75.0	75.0	74.0	70.5	67.5	65.0	63.0	61.0	59.0	57.5	56.0	55.0	54.0	53.0	52.0	51.5	50.5	50.0	50.0	49.5	49.5	49.5	49.0
	72"	75.0	75.0	75.0	75.0	75.0	75.0	75.0	74.0	71.0	69.0	66.5	65.0	63.0	61.5	60.5	59.0	58.5	57.5	56.5	56.0	55.5	55.5	55.0	55.0	55.0	55.0
	70"	75.0	75.0	75.0	75.0	75.0	75.0	75.0	75.0	75.0	75.0	73.5	71.5	69.5	68.0	66.5	65.5	64.5	63.5	63.0	62.5	62.0	61.5	61.5	61.5	61.5	61.5
	68"	75.0	75.0	75.0	75.0	75.0	75.0	75.0	75.0	75.0	75.0	75.0	75.0	75.0	75.0	74.0	72.5	71.5	70.5	69.5	69.5	69.5	69.0	69.0	69.0	69.0	69.0
	66"	75.0	75.0	75.0	75.0	75.0	75.0	75.0	75.0	75.0	75.0	75.0	75.0	75.0	75.0	75.0	75.0	75.0	75.0	75.0	75.0	75.0	75.0	75.0	75.0	75.0	75.0
	64"	75.0	75.0	75.0	75.0	75.0	75.0	75.0	75.0	75.0	75.0	75.0	75.0	75.0	75.0	75.0	75.0	75.0	75.0	75.0	75.0	75.0	75.0	75.0	75.0	75.0	75.0
	62"	75.0	75.0	75.0	75.0	75.0	75.0	75.0	75.0	75.0	75.0	75.0	75.0	75.0	75.0	75.0	75.0	75.0	75.0	75.0	75.0	75.0	75.0	75.0	75.0	75.0	75.0
	60"	75.0	75.0	75.0	75.0	75.0	75.0	75.0	75.0	75.0	75.0	75.0	75.0	75.0	75.0	75.0	75.0	75.0	75.0	75.0	75.0	75.0	75.0	75.0	75.0	75.0	75.0

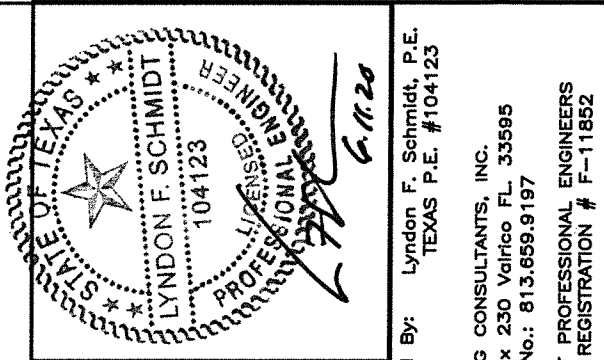
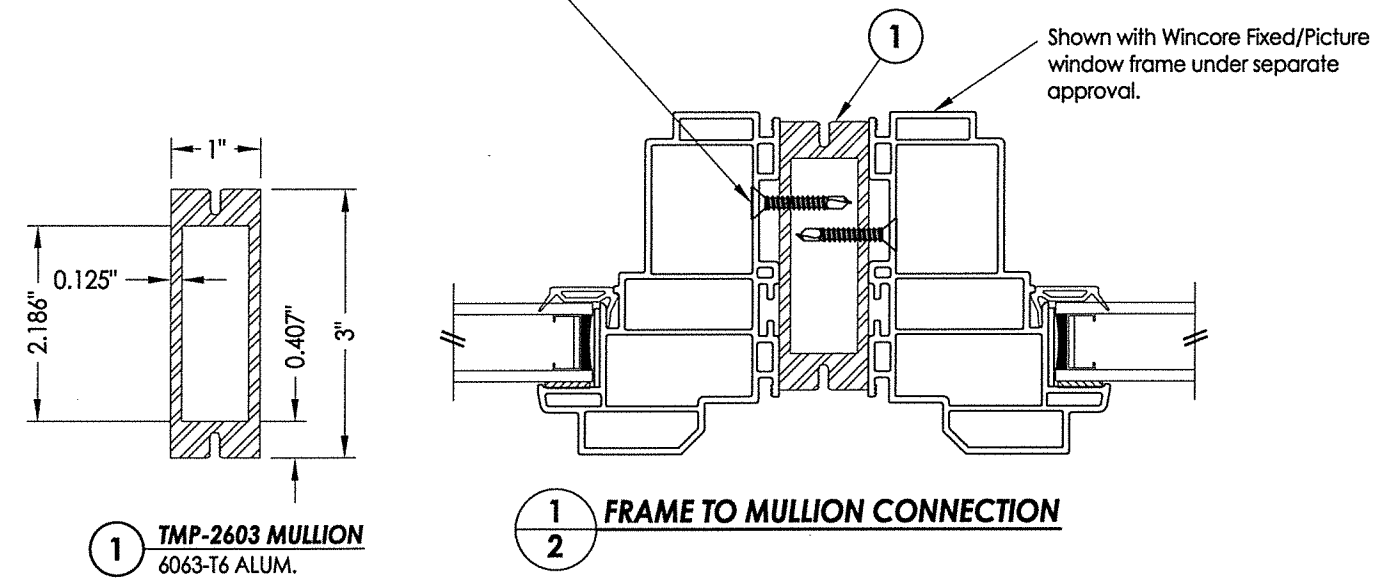
DESIGN PRESSURE TABLE NOTES:

- Determine the Overall Opening Width for the two windows to be mullied together. If multiple units are to be mullied together, use the maximum Overall Opening Width for the two widest adjacent windows.
- Enter the table at the intersection of the Mullion Length and the Overall Opening Width to determine the maximum approved Design Pressure.

- APPROVED WINDOW UNIT TYPES**
- Fixed/Picture Windows
 - Casement Windows
 - Awning Windows
 - Horizontal Slider Windows
 - Single Hung Windows
 - Double Hung Windows



At a minimum, install #10-16 Self-Drilling SMS located 4" from each end of mullion and 8" o.c. max. thereafter. At least 3 threads must protrude completely through the mullion face.



Documents Prepared By: Lyndon F. Schmidt, P.E.
TEXAS P.E. #104123

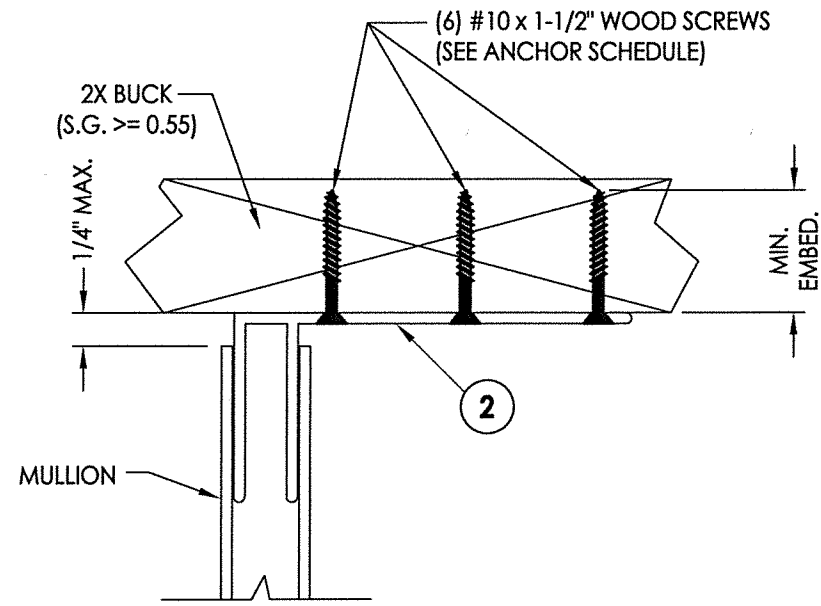
RW BUILDING CONSULTANTS, INC.
P.O. Box 230 Vairico FL 33595
Phone No.: 813.659.9197

TEXAS BOARD OF PROFESSIONAL ENGINEERS
CERTIFICATE OF REGISTRATION # F-11852

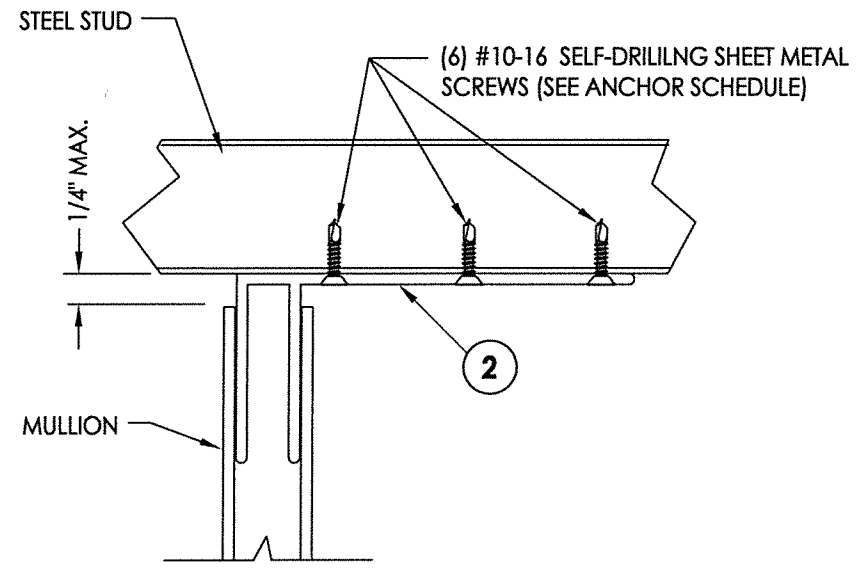
PRODUCT:	ALUMINUM CLIPPED MULLION	
PART OR ASSEMBLY:	MULLION DESIGN PRESSURE TABLE & CROSS SECTIONS	
DATE	NO. DATE	BY
6/11/20	2	LFS
5/04/16	1	LFS
11/25/14		JK

REVISIONS

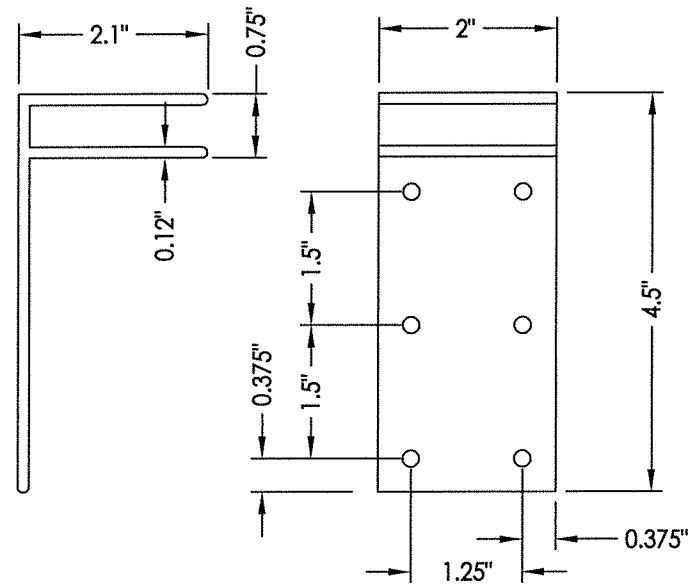
DATE: 11/25/14
SCALE: N.T.S.
DWG. BY: JK
CHK. BY: LFS
DRAWING NO.: TX-4386
SHEET 2 OF 4



1 ANCHOR BRACKET DETAIL
3 Anchor to 2x Buck



2 ANCHOR BRACKET DETAIL
3 Anchor to Steel Stud

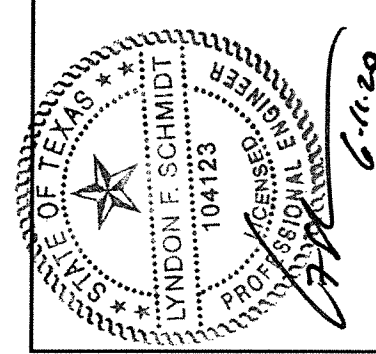


2 WOOD/STEEL STUD ANCHOR BRACKET
 6063-T6 ALUM.

- Notes:**
- Refer to individual window product approval for fabrication and installation requirements, including glazing details, frame reinforcement and anchor specifications.
 - Mullion bracket anchoring details shown may be used at either end of mullion.

MULLION ANCHOR BRACKET ANCHOR SCHEDULE				
ANCHOR	SUBSTRATE	EMBEDMENT (MIN.)	EDGE DISTANCE (MIN.)	CENTER-TO-CENTER SPACING (MIN.)
#10 PFH WOOD SCREW 	WOOD	1-3/8"	1"	1-1/4"
#10-16 SELF-DRILLING SHEET METAL SCREW 	STEEL	A MIN. OF 3 THREADS SHALL PROTRUDE COMPLETELY THROUGH THE STEEL SUBSTRATE	1"	1-1/4"

WOOD FRAMING (S.G. >= 0.42)
 STEEL CONFORMING TO ASTM A653, 16 GA. , 0.060" MIN. THICKNESS (Fy = 33,000 PSI, Fu = 45,000 PSI)
 SHEET METAL SCREWS (SAE GRADE 5 MIN.): HILTI KWIK-FLEX or ELCO DRIL-FLEX



Documents Prepared By: Lyndon F. Schmidt, P.E.
 TEXAS P.E. #104123

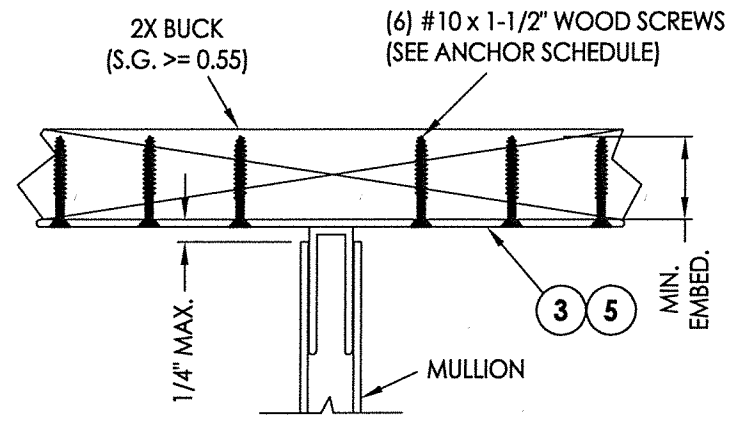
RW BUILDING CONSULTANTS, INC.
 P.O. Box 230 Valrico FL, 33595
 Phone No.: 813.659.9197

TEXAS BOARD OF PROFESSIONAL ENGINEERS
 CERTIFICATE OF REGISTRATION # F-11852

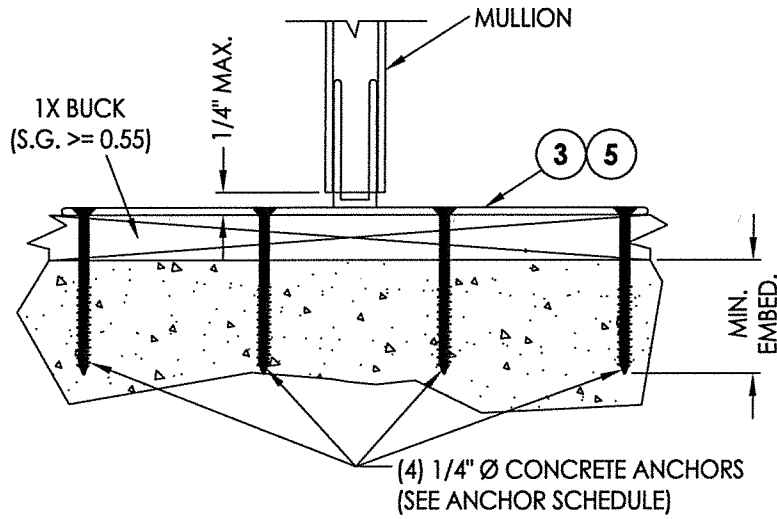
PRODUCT: ALUMINUM CLIPPED MULLION
 PART OR ASSEMBLY: ANCHOR BRACKET DETAILS & CROSS SECTIONS

NO.	DATE	REVISIONS
2	6/11/20	UPDATE TO 2018 IBC/IRC
1	5/04/16	MODIFY ANCHOR CLIP
		LFS
		BY

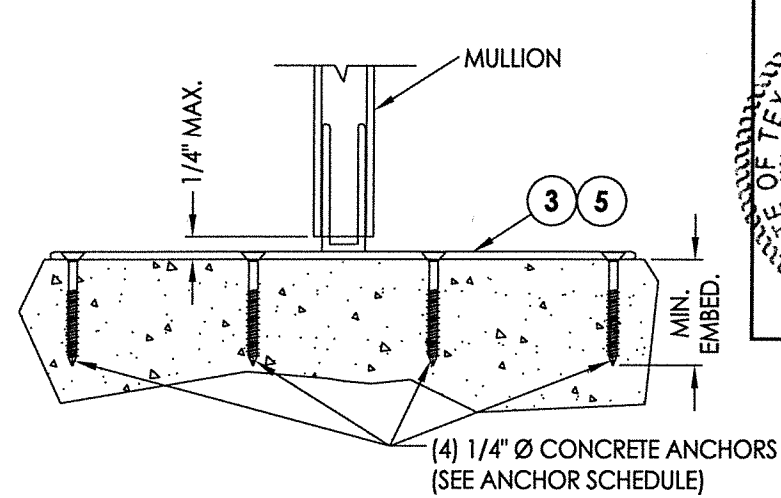
DATE: 11/25/14
 SCALE: N.T.S.
 DWG. BY: JK
 CHK. BY: LFS
 DRAWING NO.: TX-4386
 SHEET 3 OF 4



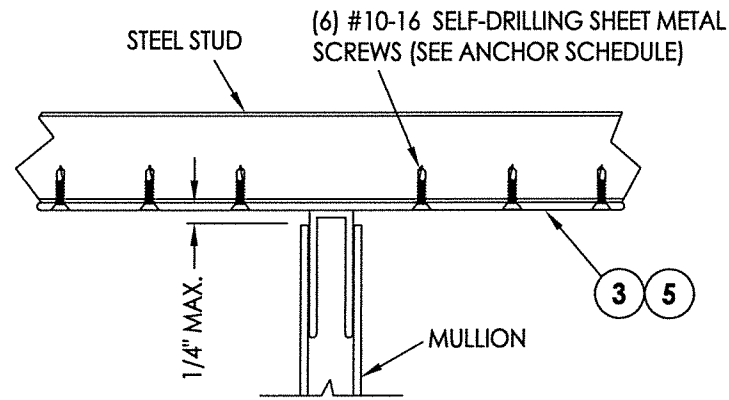
1 ANCHOR BRACKET DETAIL
4 Anchor to 2x Buck



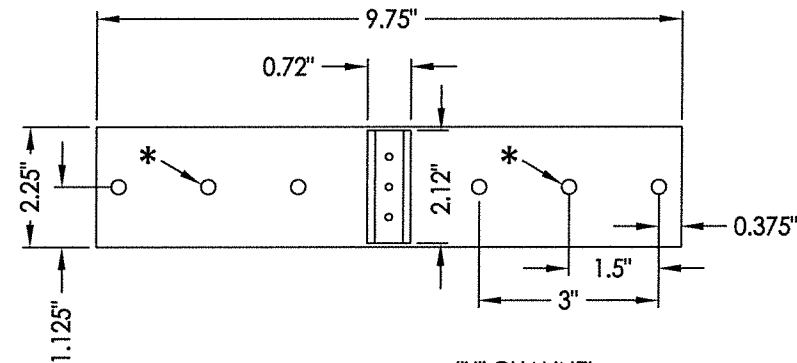
3 ANCHOR BRACKET DETAIL
4 Anchor to Masonry thru 1x Buck



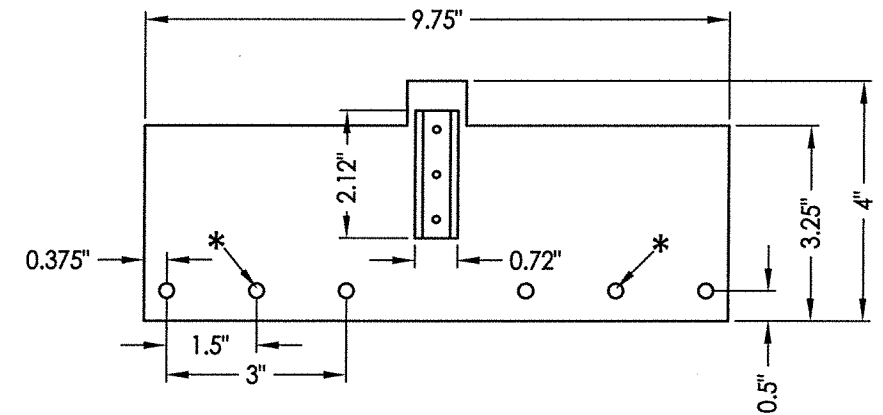
4 ANCHOR BRACKET DETAIL
4 Anchor Direct to Masonry



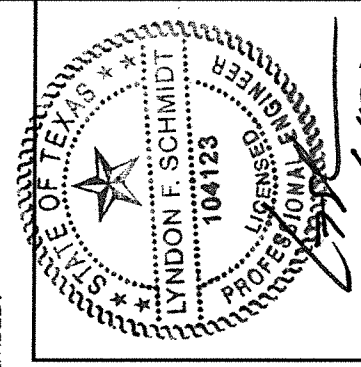
2 ANCHOR BRACKET DETAIL
4 Anchor to Steel Stud



3 MASONRY OR WOOD/STEEL STUD ANCHOR BRACKET
BASE (6061-T6 ALUM.)
"U" CHANNEL (6063-T6 ALUM.)



5 MASONRY OR WOOD/STEEL STUD OFFSET ANCHOR BRACKET
BASE (6061-T6 ALUM.)
"U" CHANNEL (6063-T6 ALUM.)



Documents Prepared By: Lyndon F. Schmidt, P.E.
TEXAS P.E. #104123
RW BUILDING CONSULTANTS, INC.
P.O. Box 230 Vairico FL 33595
Phone No.: 813.659.9197
TEXAS BOARD OF PROFESSIONAL ENGINEERS
CERTIFICATE OF REGISTRATION # F-11852

- Notes:
1. Refer to individual window product approval for fabrication and installation requirements, including glazing details, frame reinforcement and anchor specifications.
 2. Mullion bracket anchoring details shown may be used at either end of mullion.

MULLION ANCHOR BRACKET ANCHOR SCHEDULE				
ANCHOR	SUBSTRATE	EMBEDMENT (MIN.)	EDGE DISTANCE (MIN.)	CENTER-TO-CENTER SPACING (MIN.)
#10 PFH WOOD SCREW	WOOD	1-3/8"	3/4"	1-1/4"
#10-16 SELF-DRILLING SHEET METAL SCREW	STEEL	A MIN. OF 3 THREADS SHALL PROTRUDE COMPLETELY THROUGH THE STEEL SUBSTRATE	3/4"	1-1/4"
1/4" Ø PFH HILTI KWIK-CON II+	HOLLOW BLOCK	1-1/4"	2-1/2"	3"
	CONCRETE	1-1/4"	2-1/2"	3"

WOOD FRAMING (S.G. >= 0.55)
STEEL CONFORMING TO ASTM A653, 16 GA., 0.060" MIN. THICKNESS (F_y = 33,000 PSI, F_u = 45,000 PSI)
SHEET METAL SCREWS (SAE GRADE 5 MIN.): HILTI KWIK-FLEX or ELCO DRIL-FLEX
CONCRETE CONFORMING TO ACI 301 (3,000 PSI MIN.) OR HOLLOW BLOCK CONFORMING TO ASTM C90

*Holes indicated to be used for wood/steel stud installations only. Do not use for concrete screws.

PRODUCT:	ALUMINUM CLIPPED MULLION
PART OR ASSEMBLY:	ANCHOR BRACKET DETAILS & CROSS SECTIONS
DATE:	11/25/14
SCALE:	N.T.S.
DWG. BY:	JK
CHK. BY:	LFS
DRAWING NO.:	TX-4386
SHEET	4 OF 4