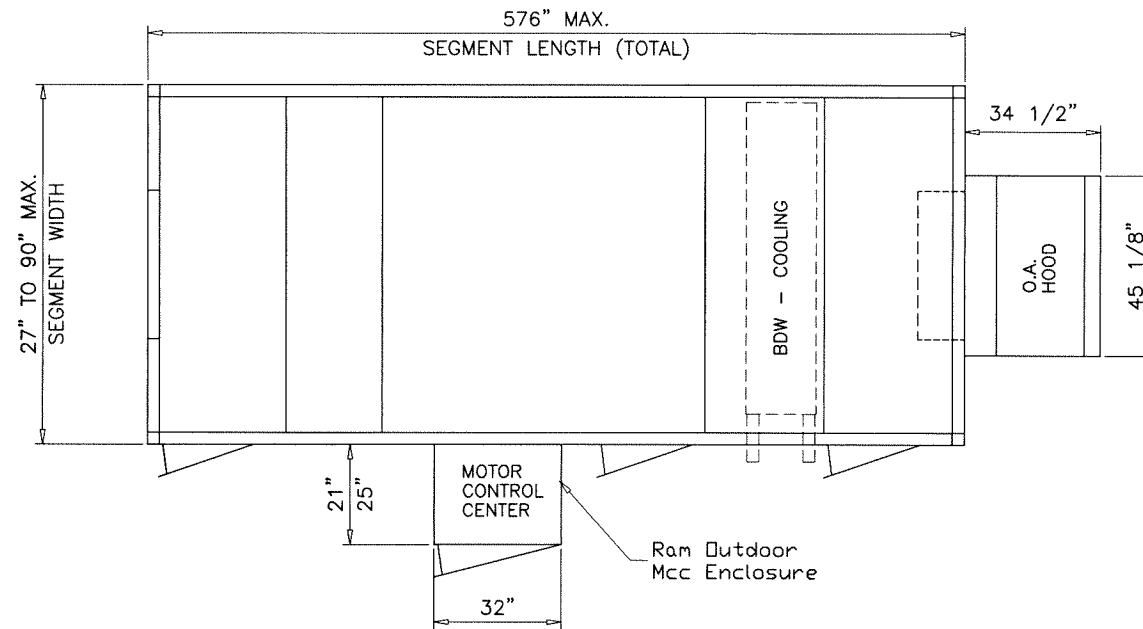
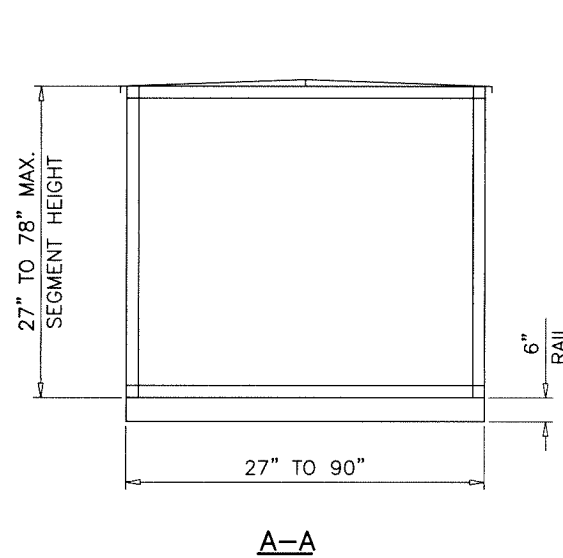


UNIT DIMENSIONS:

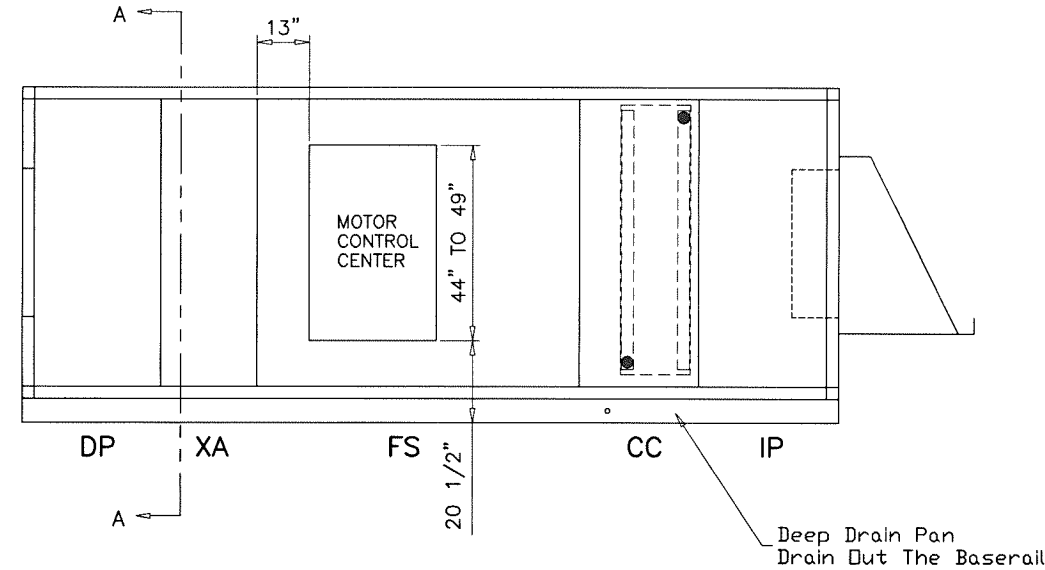
SEGMENT HEIGHT = 27" TO 78" MAX.
 SEGMENT WIDTH = 27" TO 90" MAX.
 SEGMENT LENGTH (TOTAL) = 576" MAX.
 MAXIMUM PANEL SIZES ARE SHOWN ON SHEET 12.



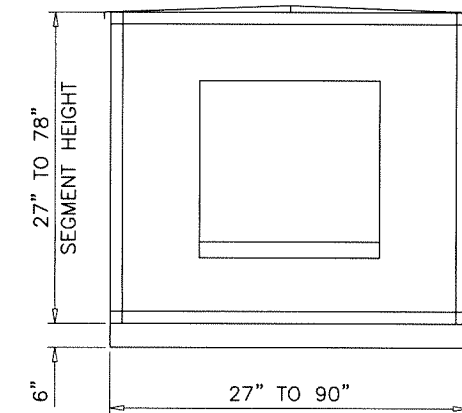
PLAN VIEW



A-A



FRONT ELEV.



SIDE VIEW

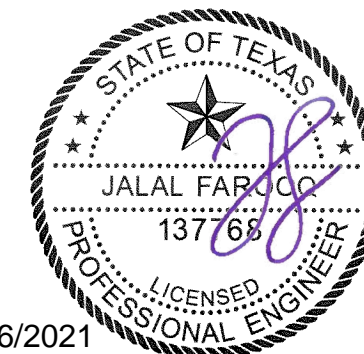
NOTE:
 1-1/4" MPT CONDENSATE CONNECTION
 LOCATED ON LEFT SIDE OF UNIT, 7 5/16"
 ABOVE ROOF LINE
 HORIZONTAL CONDENSATE CONNECTION
 DIMENSION TOLERANCE: +/- 1 1/2"

GENERAL NOTES

- THIS PRODUCT HAS BEEN DESIGNED AND TESTED TO COMPLY WITH THE REQUIREMENTS OF THE 2018 INTERNATIONAL RESIDENTIAL CODE (IRC) AND 2018 INTERNATIONAL BUILDING CODE (IBC).
- STRUCTURAL STEEL SHALL CONFORM TO ASTM DESIGNATION A-36 AND STEEL SHEET SHALL CONFORM TO ASTM DESIGNATION A-653, GALVANIZED WITH A COATING DESIGNATION OF G90. MIN. Fy = 48,380 PSI.
- ELECTRICAL AND MECHANICAL DETAILS ARE NOT PART OF THIS APPROVAL.
- POLYURETHANE SHALL BE RIGID FOAM MIN. DENSITY #2 C.F.
- MAX. FLAME SPREAD RATING = 5 AS PER ASTM E-84. SMOKE DEVELOPED INDEX = 250. SPONTANEOUS-IGNITION TEMPERATURE = 869°F.
- ALL STEEL TO BE SHOP PRIMED BEFORE ASSEMBLY.
- MATERIALS INCLUDING BUT NOT LIMITED TO STEEL/METAL SCREWS, THAT COME INTO CONTACT WITH OTHER DISSIMILAR MATERIALS SHALL MEET THE REQUIREMENTS OF THE 2018 IRC/IBC.
- ALTERNATIVE CONSTRUCTED MOTOR CONTROL ENCLOSURE SEE SHEET 16 FOR DETAIL.

ALLOWABLE DESIGN LOAD		
COMPONENT	POSITIVE	NEGATIVE
WALL	65 PSF	65 PSF
ROOF	65 PSF	65 PSF

Note:
 All standard Panel liners and
 outers are 20 gage galv steel



Sealed: 7/6/2021

afc

AL-FAROOQ CORPORATION
 ENGINEERS & PRODUCT DEVELOPMENT
 9360 SUNSET DRIVE, SUITE 220 (C.A.N. 3538)
 MIAMI, FLORIDA 33173
 TEL. (305) 264-8100 FAX. (305) 262-6978

COOLER\13-05YIC

SOLUTION XT ROOFTOP AIR HANDLING UNIT

York/Johnson Controls Inc.
 100 JCI Way
 York, PA. 17406
 TEL. (717) 978-3326

no	date	description
A	06.23.21	UPDATED TO 2018 IRC/IBC

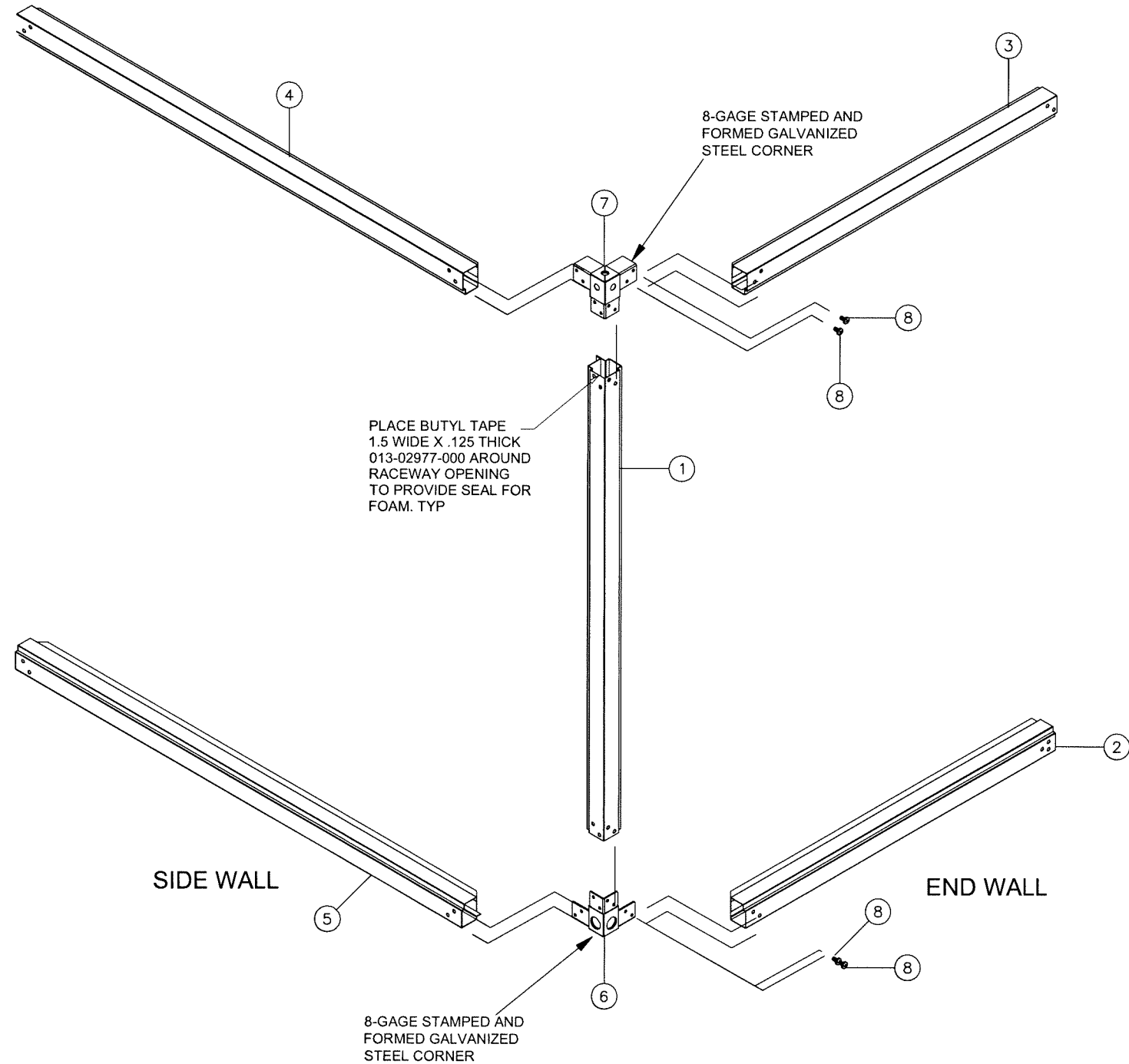
date: 11-19-13
 scale: 1/4"=1'-0"
 dr. by: TARIQ
 chk. by:

drawing no.
13-05
 sheet 1 of 16

Corner Assembly Instructions:

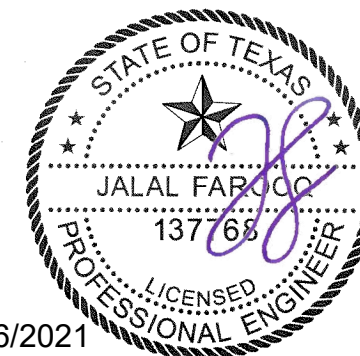
- 1) Attach DOA Raceway (2) with corner connector (6) using hardware (8) - 2 Screws
- 2) Attach End Raceway (5) with corner connector (6) using hardware (8) - 2 Screws
- 3) Attach Vertical Raceway (1) to corner connector (6) using hardware (8) - 4 Screws
- 4) Attach Corner connector (7) to vertical raceway (1) using hardware (8) - 4 Screws
- 5) Attach DOA Raceway (3) to corner connector (7) using hardware (8) - 2 Screws
- 6) Attach End Raceway (4) to corner connector (7) using hardware (8) - 2 Screws

Three other corners are attached in the same manner.



Parts List		
ITEM	QTY	DESCRIPTION
1	1	Vertical Raceway
2	1	FIA Bottom Raceway
3	1	FIA Top Raceway
4	1	End Top Raceway
5	1	End Bottom Raceway
6	1	Bottom Corner Assembly
7	1	Top Corner Assembly
8	6	Screw, hex socket button head 3/8-16 x 3/4" zinc plated

**CORNER ASSEMBLY
& INTERNAL FRAMING**



Sealed: 7/6/2021

afc
AL-FAROOQ CORPORATION
 ENGINEERS & PRODUCT DEVELOPMENT
 9360 SUNSET DRIVE, SUITE 220 (C.A.N. 3538)
 MIAMI, FLORIDA 33173
 TEL. (305) 264-8100 FAX. (305) 262-6978

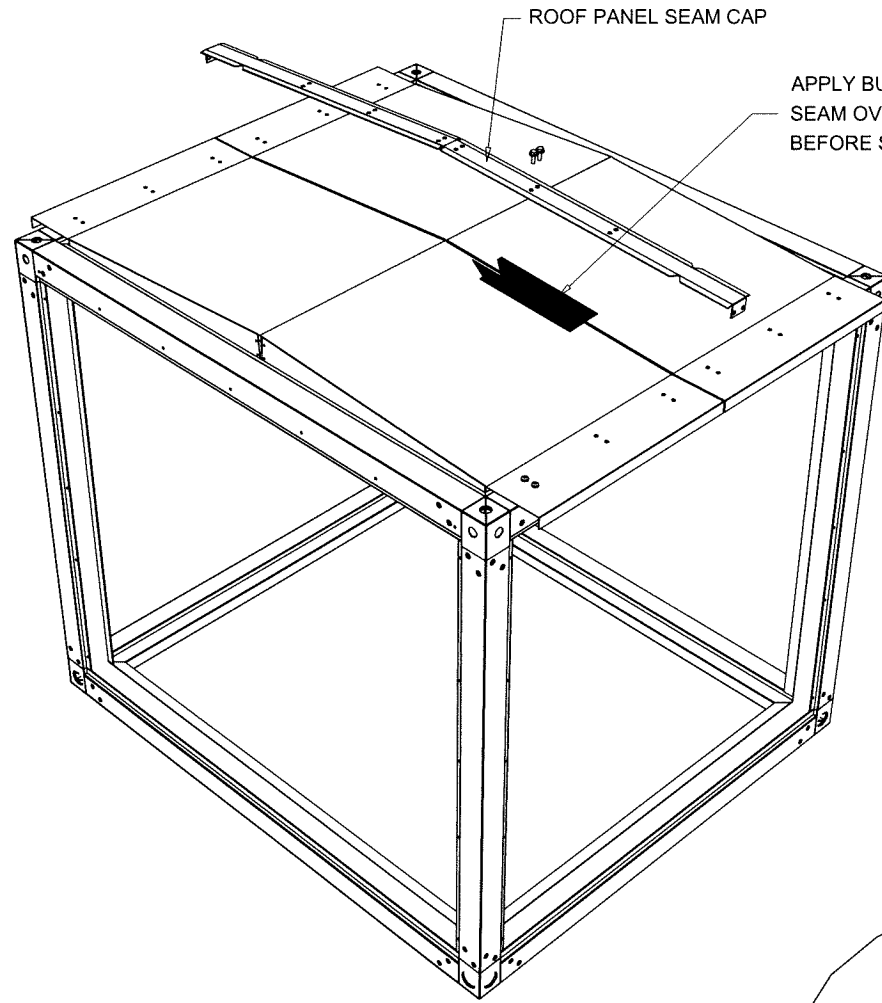
COOLER\13-05YIC

SOLUTION XT ROOFTOP AIR HANDLING UNIT
York/Johnson Controls Inc.
 100 JCI Way
 York, PA. 17406
 TEL. (717) 978-3326

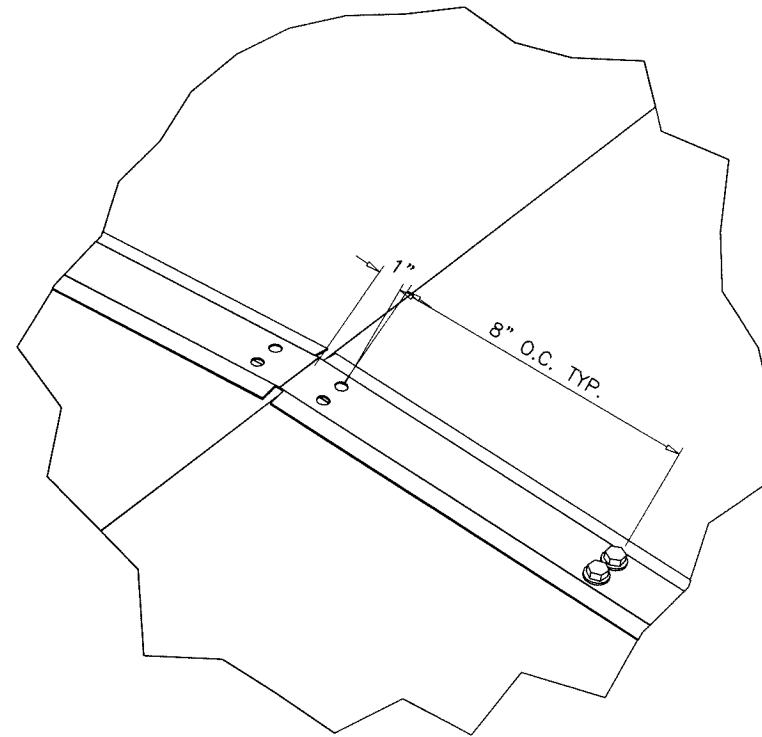
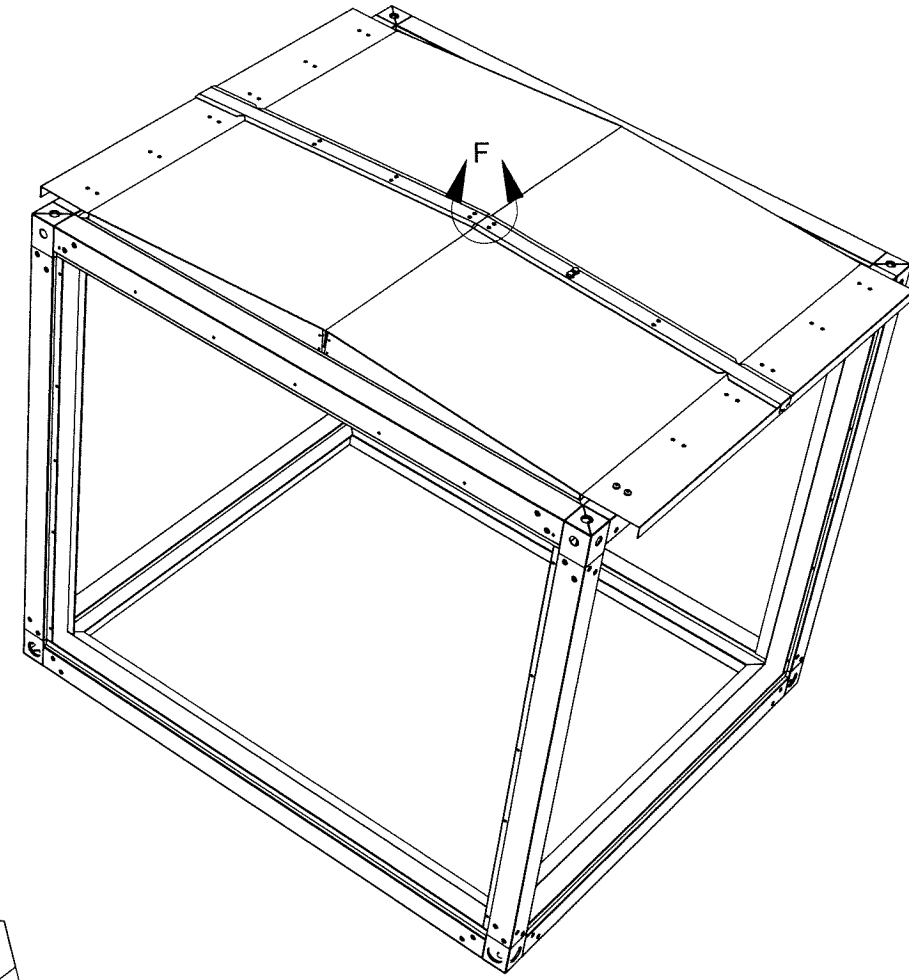
no	date	by	description

date: 11-19-13
 scale: 1/4"=1'-0"
 dr. by: TARIQ
 chk. by:

drawing no.
13-05
 sheet 2 of 16



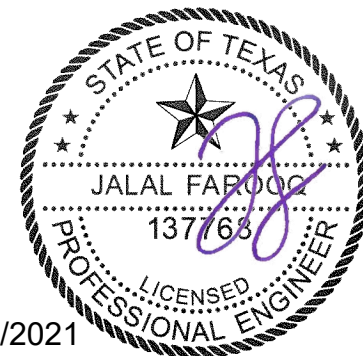
APPLY BUTYL TAPE ALONG SEAM OVERLAPPING THE ROOF PANELS BEFORE SEAM CAP IS SECURED.



DETAIL F

AFTER BUTYL TAPE IS APPLIED AS SHOWN ABOVE SECURE SEAM CAP AS SHOWN IN DETAIL F WITH SCREW, TEK, EPDM, PLTD, 0.25-14 X 1". ALONG TOP AND INTO SIDE AS WELL.

ROOF SEAM
CAP ASSEMBLY
OPTION #1



Sealed: 7/6/2021

afc

AL-FAROOQ CORPORATION
ENGINEERS & PRODUCT DEVELOPMENT
9360 SUNSET DRIVE, SUITE 220
MIAMI, FLORIDA 33173 (C.A.N. 3538)
TEL. (305) 264-8100 FAX. (305) 262-6978

COOLER\13-05YC

SOLUTION XT ROOFTOP AIR HANDLING UNIT

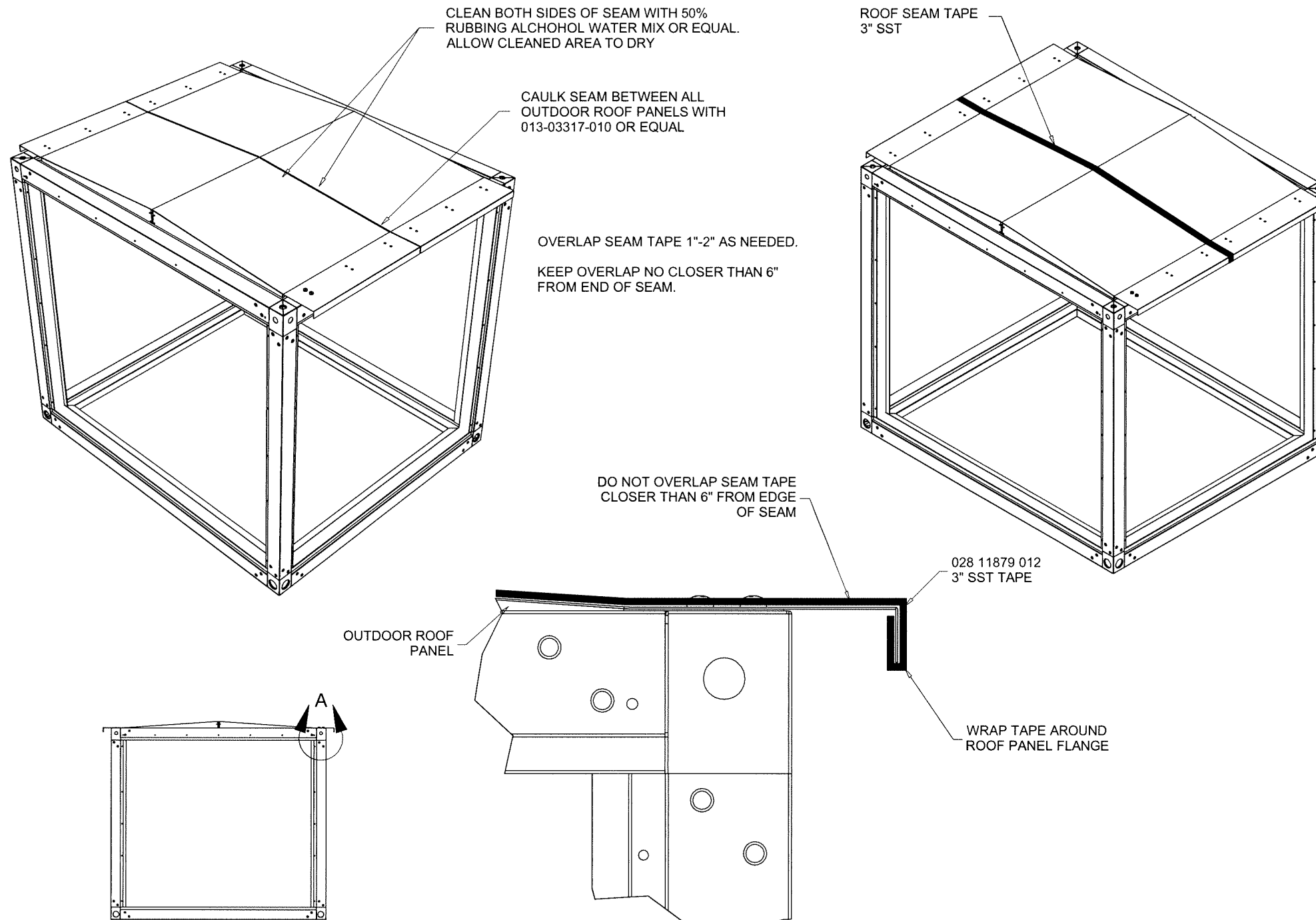
York/Johnson Controls Inc.
100 JCI Way
York, PA. 17406
TEL. (717) 978-3326

no	date	by	description

date: 11-19-13
scale: 1/4"=1'-0"
dr. by: TARIQ
chk. by:

drawing no.
13-05

sheet 3 of 16



CLEAN BOTH SIDES OF SEAM WITH 50% RUBBING ALCOHOL WATER MIX OR EQUAL. ALLOW CLEANED AREA TO DRY

CAULK SEAM BETWEEN ALL OUTDOOR ROOF PANELS WITH 013-03317-010 OR EQUAL

OVERLAP SEAM TAPE 1"-2" AS NEEDED. KEEP OVERLAP NO CLOSER THAN 6" FROM END OF SEAM.

ROOF SEAM TAPE 3" SST

DO NOT OVERLAP SEAM TAPE CLOSER THAN 6" FROM EDGE OF SEAM

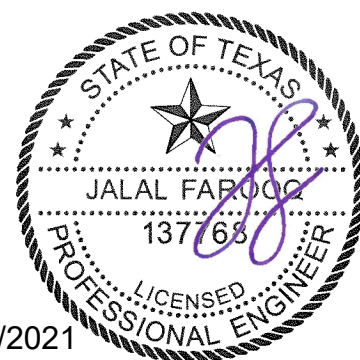
028 11879 012 3" SST TAPE

OUTDOOR ROOF PANEL

WRAP TAPE AROUND ROOF PANEL FLANGE

DETAIL A

ROOF SEAM TAPE ASSEMBLY
OPTION #2



Sealed: 7/6/2021

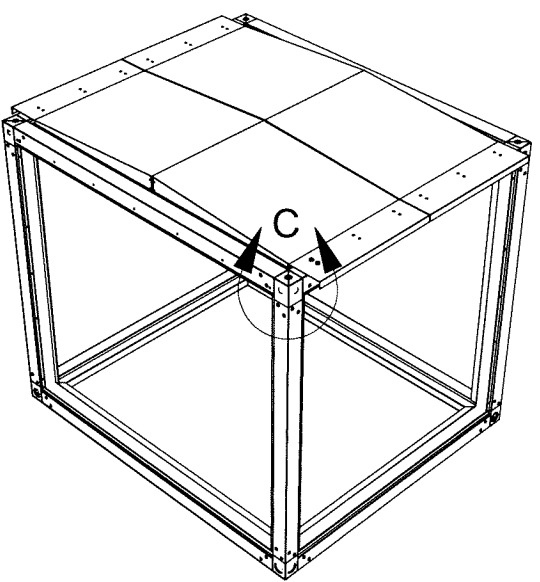
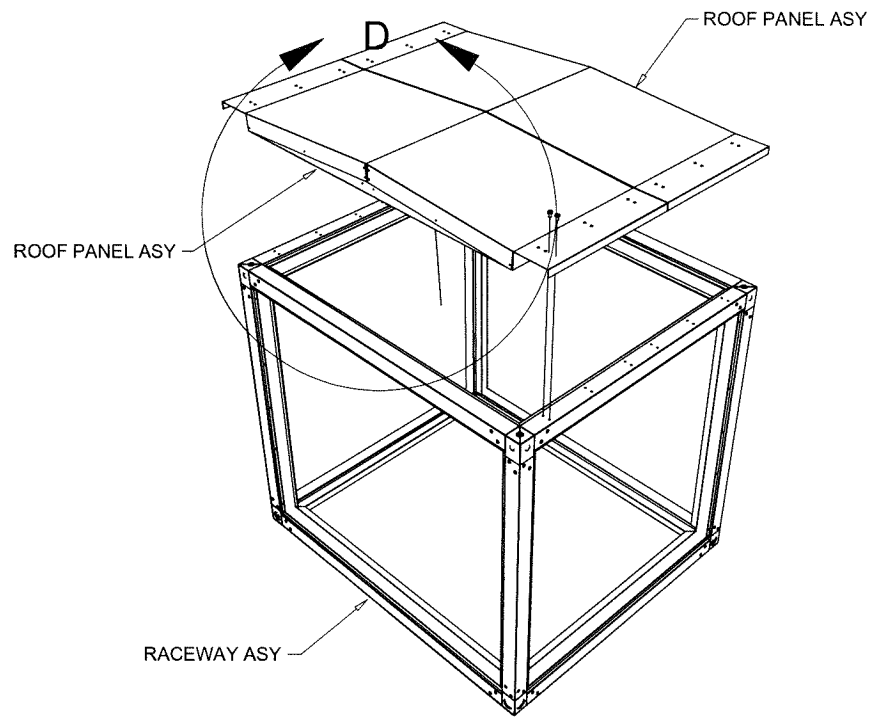
afc
AL-FAROOQ CORPORATION
ENGINEERS & PRODUCT DEVELOPMENT
9360 SUNSET DRIVE, SUITE 220 (C.A.N. 3538)
MIAMI, FLORIDA 33173
TEL. (305) 264-8100 FAX. (305) 262-6978
COOLER 13-05YIC

SOLUTION XT ROOFTOP AIR HANDLING UNIT
York/Johnson Controls Inc.
100 JCI Way
York, PA, 17406
TEL. (717) 978-3326

revisions:	
no	date by description

date: 11-19-13	scale: -	dr. by: TARIQ	chk. by:
----------------	----------	---------------	----------

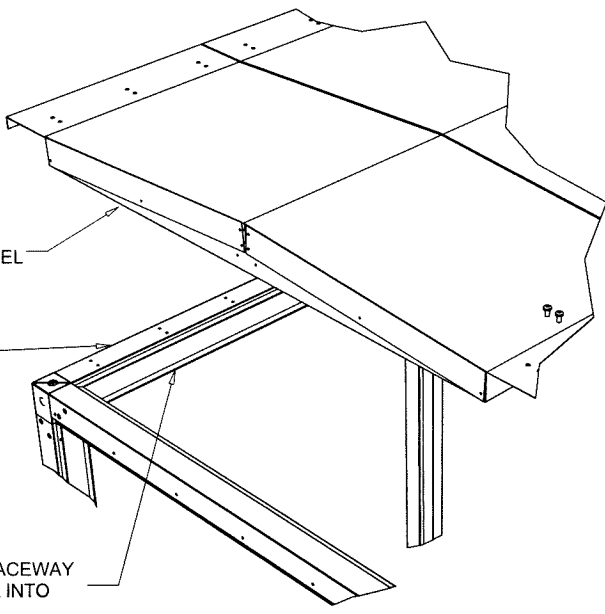
drawing no.	13-05
sheet	4 of 16



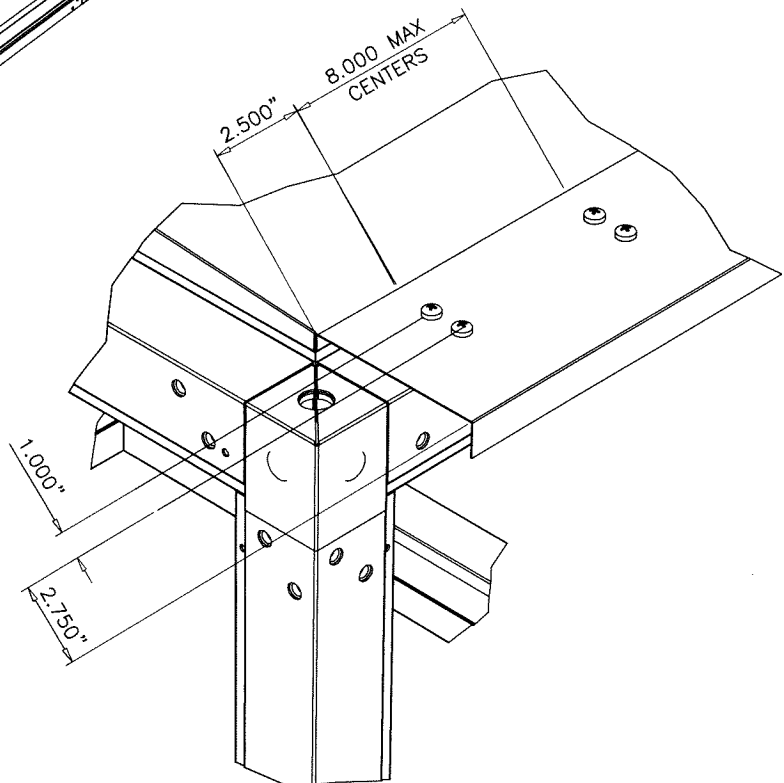
APPLY NEOPRENE 028-11867-000 TO BOTH SIDES OF ROOF PANEL ASY BEFORE PLACING ROOF PANEL IN RACEWAY ASY.

APPLY BUTYL TAPE 013-02977-000 TO RACEWAY FLANGE BEFORE PLACING ROOF PANEL INTO RACEWAY ASY.

APPLY BUTYL TAPE 013-02976-000 TO RACEWAY FLANGE BEFORE PLACING ROOF PANEL INTO RACEWAY ASY.



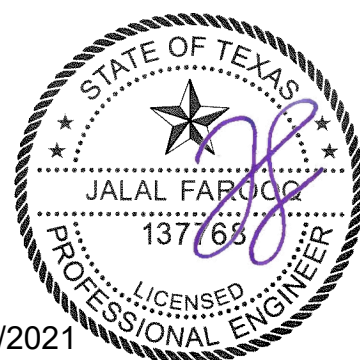
DETAIL D



DETAIL C

AFTER APPLYING NEOPRENE AND BUTYL TAPE AS SHOWN IN DETAIL D, PLACE ROOF PANEL INTO RACEWAY ASY AND SECURE AS SHOWN IN DETAIL C USING SCREW TAP TY A PH 14-10 1/4 X 3/4 PAN HEAD PHILLIPS (#1), TYPE A, ZINC PLATED

ROOF PANEL ASSEMBLY



Sealed: 7/6/2021

af c
AL-FAROOQ CORPORATION
 ENGINEERS & PRODUCT DEVELOPMENT
 9360 SUNSET DRIVE, SUITE 220 (C.A.N. 3538)
 MIAMI, FLORIDA 33173
 TEL. (305) 264-8100 FAX. (305) 262-6978
 COOLER\13-05YIC

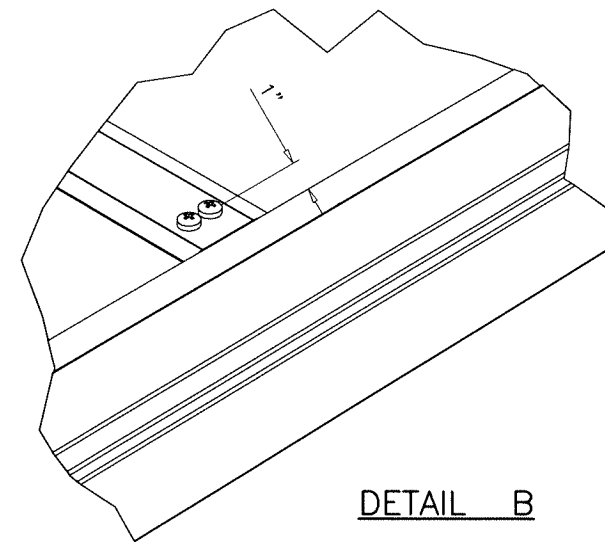
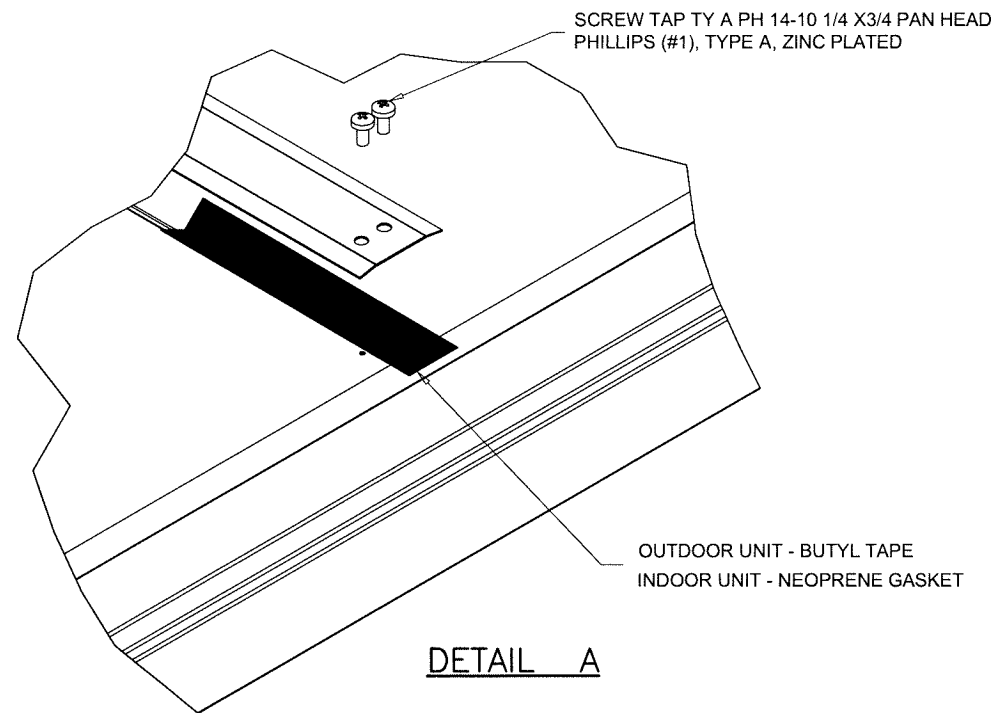
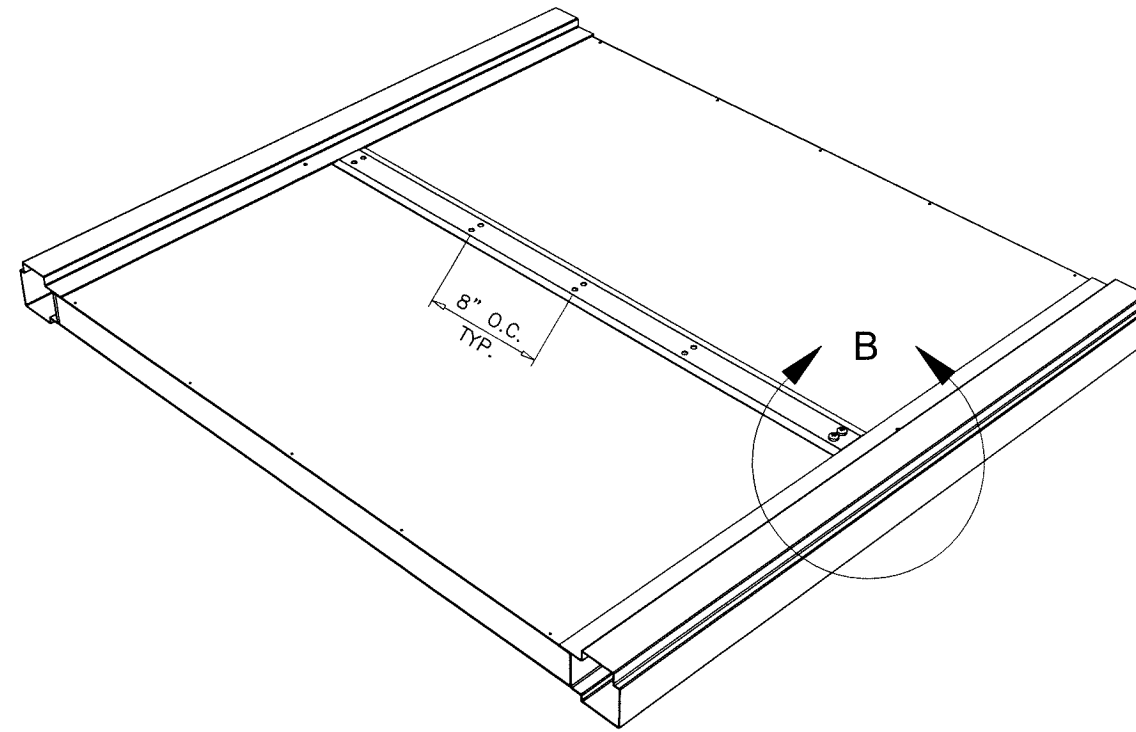
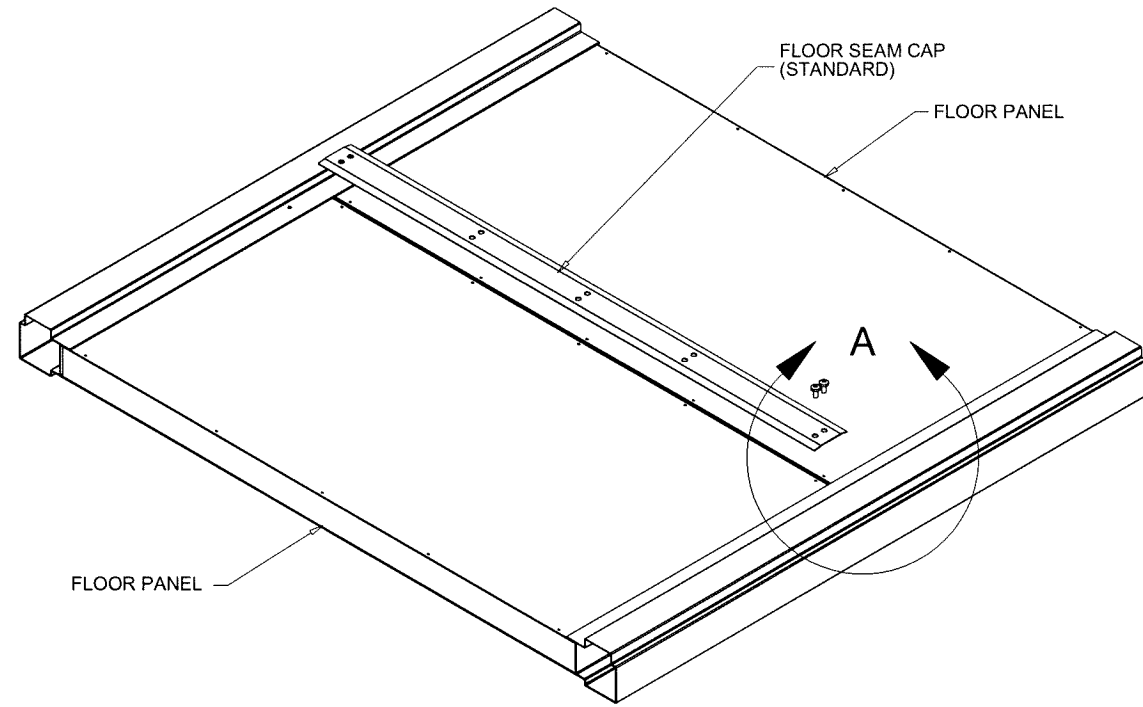
SOLUTION XT ROOFTOP AIR HANDLING UNIT
York/Johnson Controls Inc.
 100 JCI Way
 York, PA. 17406
 TEL. (717) 978-3326

revisions:	
no	date by description

date: 11-19-13
 scale: 1/4"=1'-0"
 dr. by: TARIQ
 chk. by:

drawing no.
13-05

sheet 5 of 16



**STANDARD FLOOR PANEL SEAM CAP ASY
APPLY GASKET / BUTYL TAPE ALONG FLOOR PANEL
SEAM BEFORE SECURING FLOOR PANEL SEAM CAP
WITH SCREWS LISTED IN DETAIL A.**

**FLOOR SEAM CAP
MOUNTING DETAIL
OPTION #1**



Sealed: 7/6/2021

afc
AL-FAROOQ CORPORATION
ENGINEERS & PRODUCT DEVELOPMENT
9360 SUNSET DRIVE, SUITE 220
MIAMI, FLORIDA 33173 (C.A.N. 3538)
TEL. (305) 264-8100 FAX. (305) 262-6978

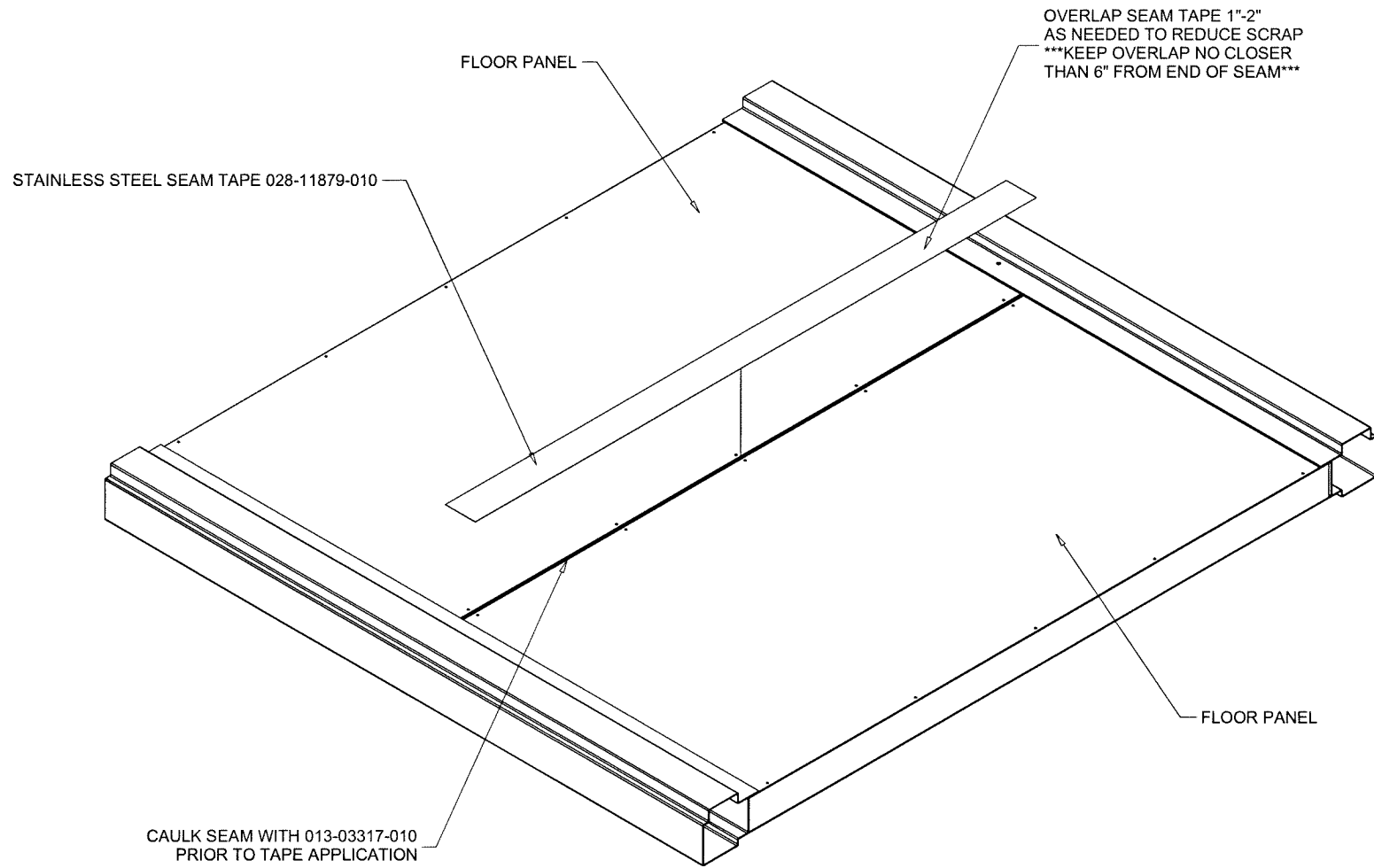
SOLUTION XT ROOFTOP AIR HANDLING UNIT
York/Johnson Controls Inc.
100 JCI Way
York, PA. 17406
TEL. (717) 978-3326

no	date	by	description

date: 11-19-13
scale: 1/4"=1'-0"
dr. by: TARIQ
chk. by:

drawing no.
13-05
sheet 6 of 16

COOLER\13-05YIC

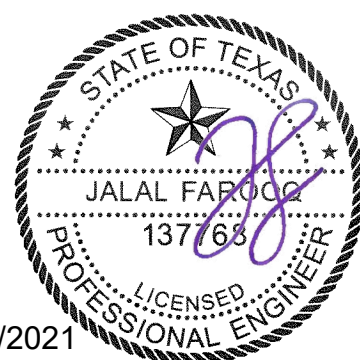


CAULK SEAM WITH 013-03317-010
PRIOR TO TAPE APPLICATION

OVERLAP SEAM TAPE 1"-2"
AS NEEDED TO REDUCE SCRAP
***KEEP OVERLAP NO CLOSER
THAN 6" FROM END OF SEAM***

STANDARD FLOOR PANEL SEAM TAPE APPLICATION
THIS APPLIES FOR BOTH XTI & XTO UNITS.
CLEAN BOTH SIDES OF SEAM WITH 50% RUBBING
ALCOHOL WATER MIX OR EQUAL. ALLOW TO DRY.
CAULK ALONG FLOOR PANEL SEAM.
APPLY SEAM TAPE EVENLY ALONG ENTIRE FLOOR
PANEL SEAM.

FLOOR SEAM TAPE
ASSEMBLY
OPTION #2



Sealed: 7/6/2021

afc
AL-FAROOQ CORPORATION
ENGINEERS & PRODUCT DEVELOPMENT
9360 SUNSET DRIVE, SUITE 220 (C.A.N. 3538)
MIAMI, FLORIDA 33173
TEL. (305) 264-8100 FAX. (305) 262-6978

SOLUTION XT ROOFTOP AIR HANDLING UNIT
York/Johnson Controls Inc.
100 JCI Way
York, PA. 17406
TEL. (717) 978-3326

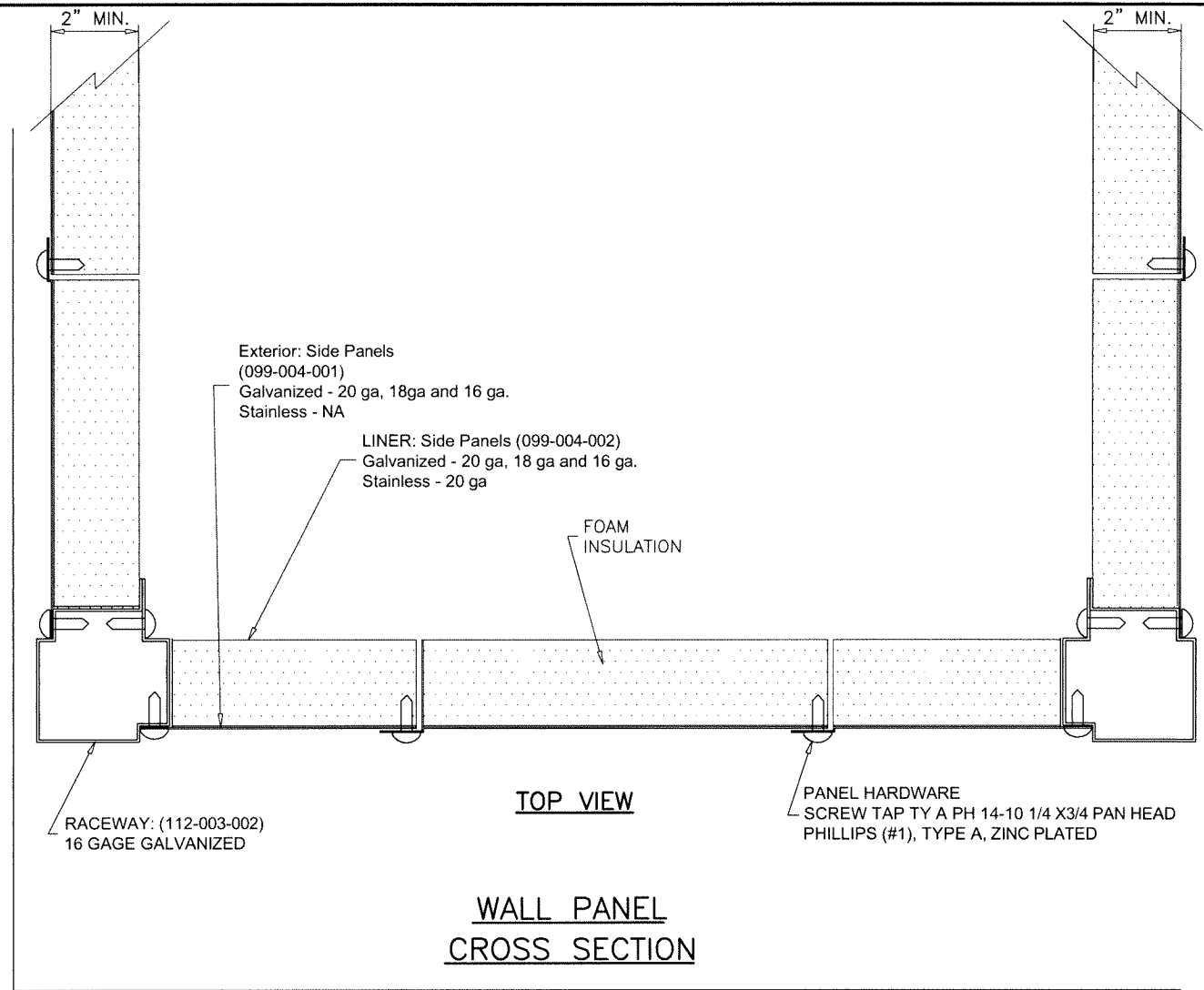
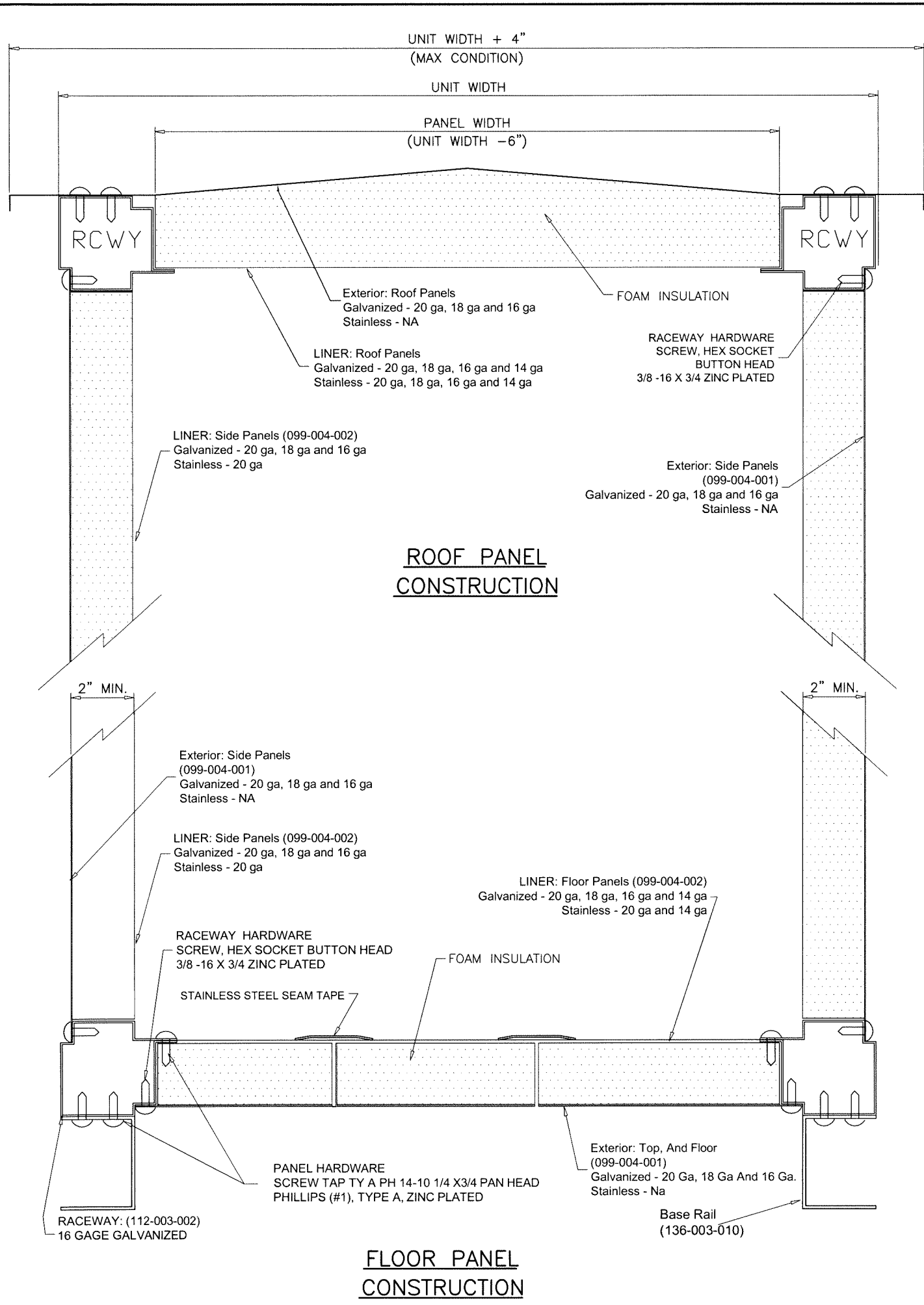
revisions:	
no	date by description

date: 11-19-13	scale: -	dr. by: TARIQ	chk. by:
----------------	----------	---------------	----------

drawing no.
13-05

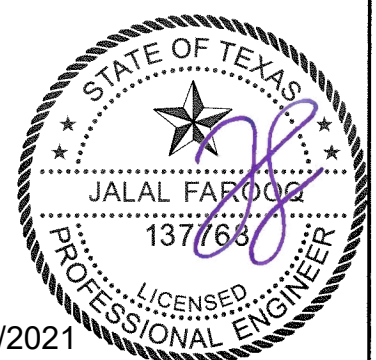
sheet 7 of 16

COOLER\13-05YIC



Notes:

1. Roof panels, floor panels, and wall panels are 2.00" thick double wall construction. Exterior roof and floor panel construction of 20 gage (min) galvanized steel and 20 gage (min) for wall panels. The interior liner shall be constructed of 20 gage (min) for roof and floor panels and 20 gage (min) for walls.
2. Access doors are 2.00" thick, double-wall construction, of galvanized sheet steel. The interior and exterior liner construction shall consist of 24 gage sheet steel.
3. Insulation is spray injected closed-cell foam.



Sealed: 7/6/2021

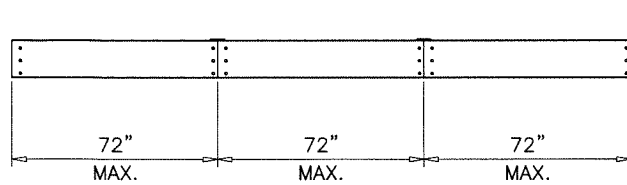
a f c
AL-FAROOQ CORPORATION
 ENGINEERS & PRODUCT DEVELOPMENT
 9360 SUNSET DRIVE, SUITE 220 (C.A.N. 3538)
 MIAMI, FLORIDA 33173
 TEL. (305) 264-8100 FAX. (305) 262-6978
 COOLER\13-05YC

SOLUTION XT ROOFTOP AIR HANDLING UNIT
York/Johnson Controls Inc.
 100 JCI Way
 York, PA. 17406
 TEL. (717) 978-3326

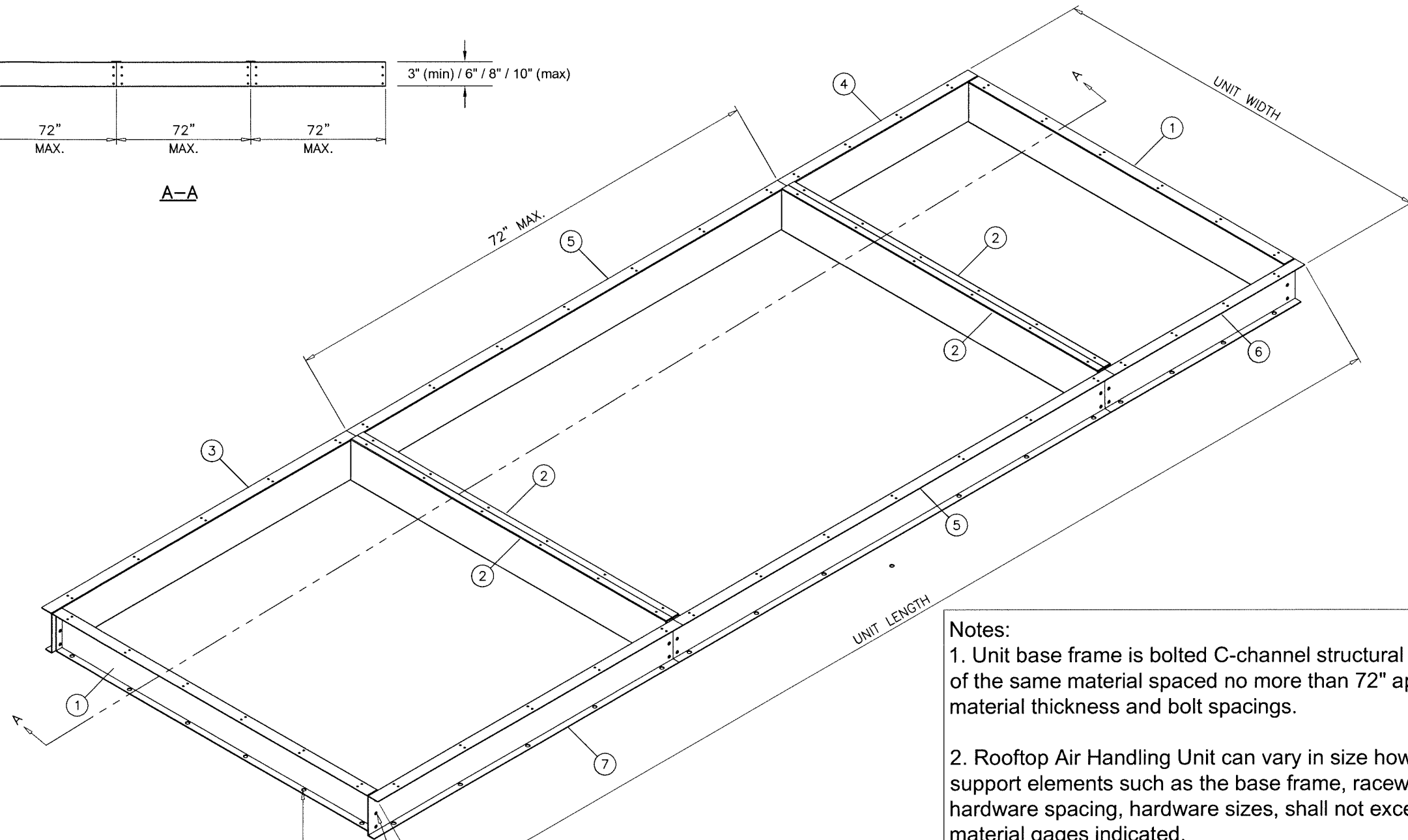
no	date	by	description

date: 11-19-13
 scale: 1/4" = 1"
 dr. by: TARIQ
 chk. by:

drawing no.
13-05
 sheet 8 of 16



A-A



5/8" DIA. ST/ST KWIK BOLTS
INTO 3000 PSI MIN. CONCRETE
4" MIN. CONC. EMBED
OR
5/8" DIA. THRU BOLTS (ASTM 499 STEEL)
W/ WASHER & NUT
INTO 1/8" MIN. THK. STEEL
AT 4" FROM ENDS & 16" O.C. MAX.
7" MIN. EDGE DIST.
SEE NOTE #4

SCREW, HEX HEAD, 1/2-13UNC-2A X 1.75
(2) 3" & 6" BASERAIL HEIGHTS
(3) 8" & 10" BASERAIL HEIGHTS

NOTE:
VERIFY CABLE LOCATION BEFORE DRILLING
IF ROOF IS POST TENSION CONCRETE SLAB.

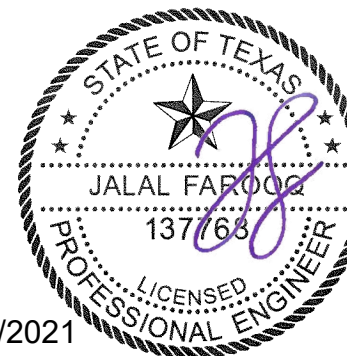
Notes:

1. Unit base frame is bolted C-channel structural steel with c-channel cross supports of the same material spaced no more than 72" apart. Refer to sheet 10 for material thickness and bolt spacings.
2. Rooftop Air Handling Unit can vary in size however, spacing of the structural support elements such as the base frame, raceways, roof/floor/wall panels, hardware spacing, hardware sizes, shall not exceed the dimensions or material gages indicated.
3. It shall be the responsibility of the permit holder to verify the structural integrity of the existing structure to support the loads superimposed by the Rooftop Air Handling Unit.
4. Attachment to the roof to prevent sliding and overturning of the air handling unit is not part of the scope of this product approval. These elements shall be reviewed by the corresponding building department.

Parts List		
ITEM	QTY	DESCRIPTION
1	2	BASERAIL END XTI GALV
2	4	BASERAIL INT XTI GALV
3	1	BASERAIL DOA FIA GALV
4	1	BASERAIL DOA LIA GALV
5	2	BASERAIL DOA MIA GALV
6	1	BASERAIL DOA FIA GALV
7	1	BASERAIL DOA LIA GALV

SOLUTION XT
BASERAIL ASSEMBLY

Sealed: 7/6/2021



af c
AL-FAROOQ CORPORATION
ENGINEERS & PRODUCT DEVELOPMENT
9360 SUNSET DRIVE, SUITE 220
MIAMI, FLORIDA 33173 (C.A.N. 3538)
TEL. (305) 264-8100 FAX. (305) 262-6978

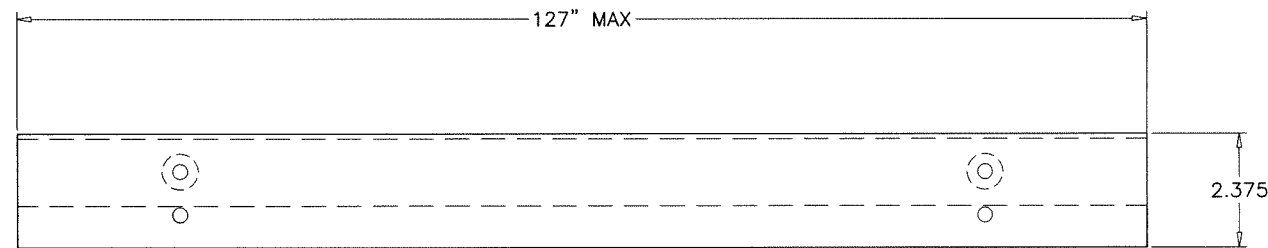
SOLUTION XT ROOFTOP AIR HANDLING UNIT
York/Johnson Controls Inc.
100 JCI Way
York, PA. 17406
TEL. (717) 978-3326

no	date	description

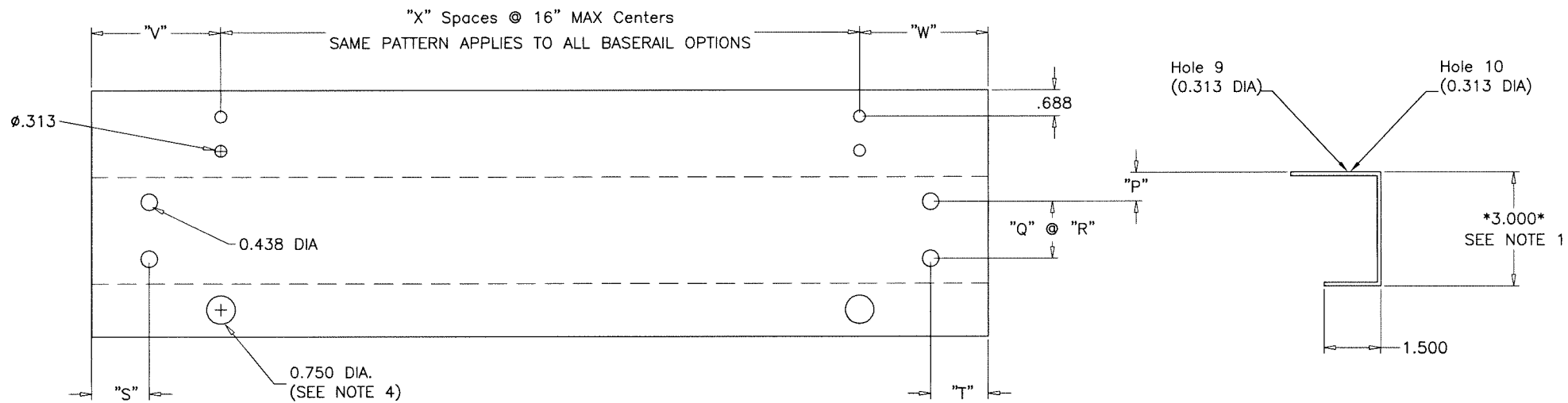
date: 11-19-13
scale: 1/4"=1'-0"
dr. by: TARIQ
chk. by:

drawing no.
13-05
sheet 9 of 16

COOLER\13-05YIC



FORMED TOP VIEW



FLAT VIEW

FORMED SIDE VIEW

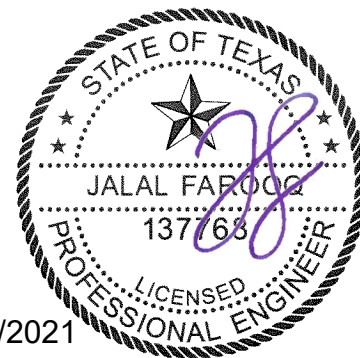
**5/8" DIA. HOLES USED WITH 1/4" SCREWS TO ATTACH
BASERAIL TO UNIT RACEWAY.
3/4" DIA. HOLES USED WITH 5/8" BOLTS TO ATTACH
BASERAIL TO DUNAGE STEEL OR CONC. SLAB.
SEE SHEET 11 FOR BASERAIL USED FOR ROOF CURB.
SEE NOTE # 4 BELOW.**

- NOTES:
- 1) BASERAIL OPTION HEIGHTS 3",6",8",10"
 - 2) HOLE SPACING BETWEEN FIRST AND LAST WILL VARY UPON BASERAIL LENGTH BUT CENTERS WILL NOT EXCEED 16" AS INDICATED BY "X" SPACES.
 - 3) BASERAIL GAGES AS FOLLOWS - 3" = 12 GAGE GALV
6" = 10 GAGE GALV
8" = 10 GAGE GALV
10" = 8 GAGE GALV
 - 4) 0.75" DIA. BASERAIL BOLT HOLE SHALL BE USE FOR ATTACHMENT TO THE ROOF TO PREVENT SLIDING AND OVERTURNING OF THE AIR HANDLING UNIT IS NOT PART OF THE SCOPE OF THIS PRODUCT APPROVAL. THESE ATTACHMENT DETAILS SHALL BE REVIEWED BY THE CORRESPONDING BUILDING DEPARTMENT.

Baseraill Height	"P"	"Q" SPACES	"R"	BASERAIL LOCATION	"S"	"T"	"V"	"W"
3	.875	1	1.250	LIA	.941	1.781	3.153	5.403
6	1.657	1	2.687	MIA	.941	.941	3.153	3.153
8	1.657	2	2.687	FIA	1.781	.941	5.403	3.153
10	1.657	2	2.687	FULL	1.781	1.781	5.403	5.403

**BASERAIL
DIMENSIONS**

Sealed: 7/6/2021



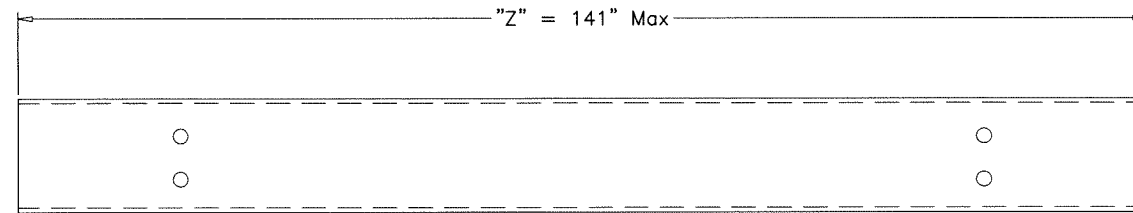
af c
AL-FAROOQ CORPORATION
ENGINEERS & PRODUCT DEVELOPMENT
9360 SUNSET DRIVE, SUITE 220 (C.A.N. 3538)
MIAMI, FLORIDA 33173
TEL. (305) 264-8100 FAX. (305) 262-6978
COOLER\13-05YIC

SOLUTION XT ROOFTOP AIR HANDLING UNIT
York/Johnson Controls Inc.
100 JCI Way
York, PA. 17406
TEL. (717) 978-3326

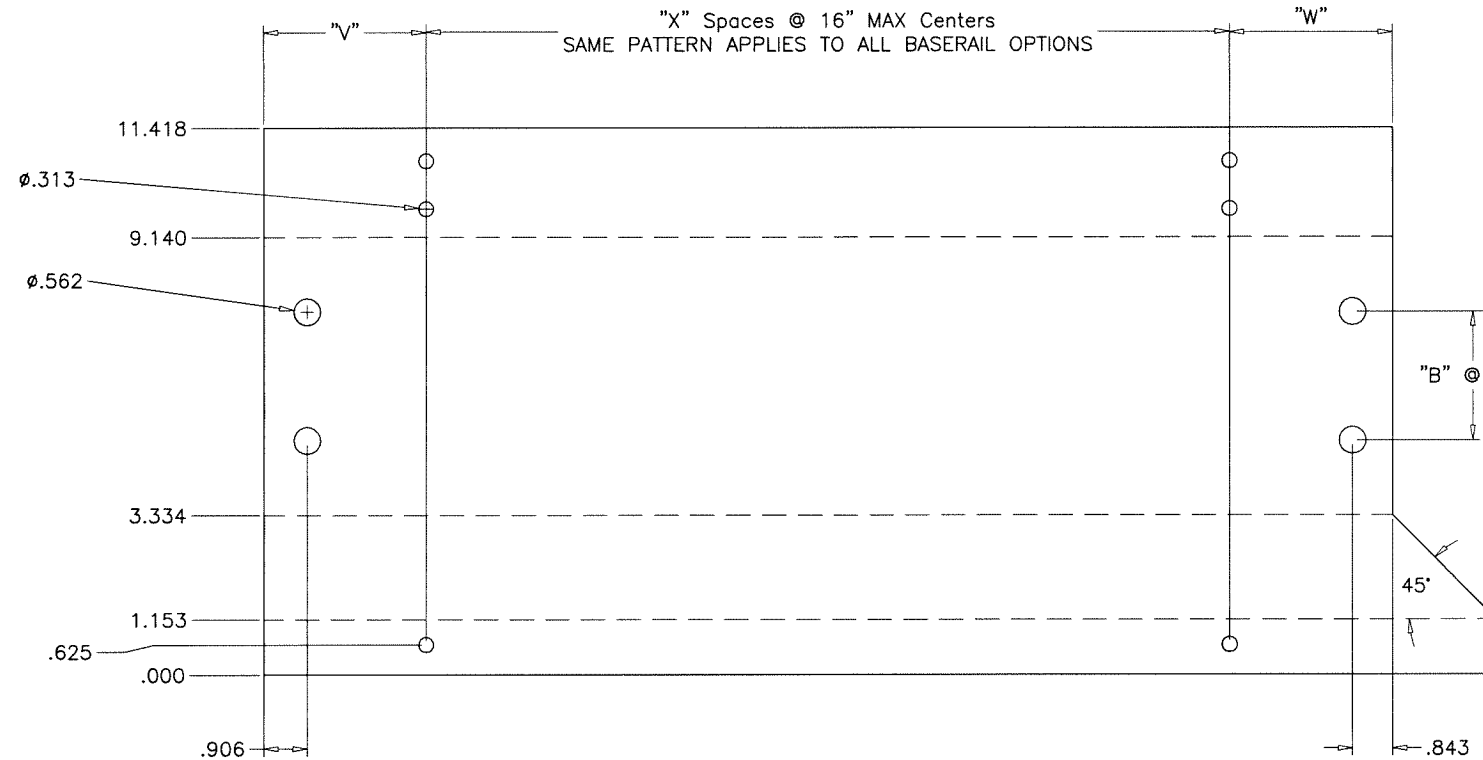
revisions:

no	date	by	description

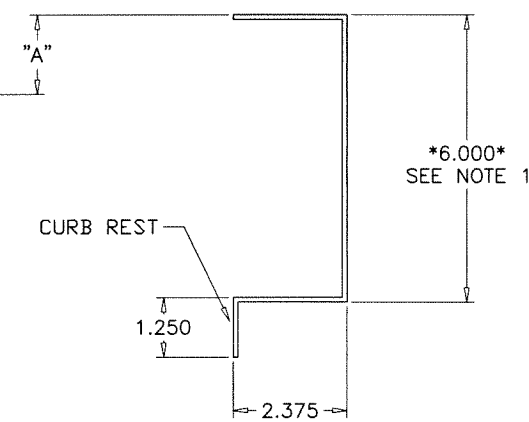
date: 11-19-13
scale: 1/4" = 1"
dr. by: TARIQ
chk. by:
drawing no.
13-05
sheet 10 of 16



FORMED TOP VIEW



FLAT VIEW



FORMED SIDE VIEW

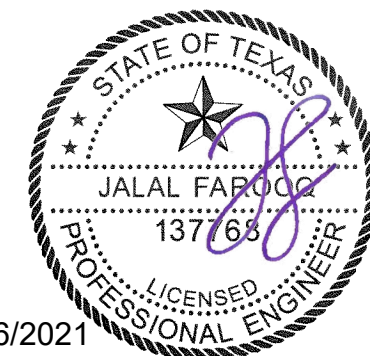
CALCULATION CHART AND DATA			
VERTICAL HOLE DATA			
BASERAIL HEIGHT	"A"	"B" SPACES	"C"
6"	1.657	1	2.687
8"	1.657	2	2.687
10"	1.657	2	2.687

NOTES:

- 1) BASERAIL OPTION HEIGHTS 6",8",10"
- 2) HOLE SPACING BETWEEN FIRST AND LAST WILL VARY UPON BASERAIL LENGTH BUT CENTERS WILL NOT EXCEED 16" AS INDICATED BY "X" SPACES.
- 3) BASERAIL GAGES AS FOLLOWS - 6" = 10 GAGE GALV
8" = 10 GAGE GALV
10" = 8 GAGE GALV
- 4) 0.75" DIA. BASERAIL BOLT HOLE SHALL BE USE FOR ATTACHMENT TO THE ROOF TO PREVENT SLIDING AND OVERTURNING OF THE AIR HANDLING UNIT IS NOT PART OF SCOPE OF THIS PRODUCT APPROVAL. THESE ATTACHMENT DETAILS SHALL BE REVIEWED BY THE CORRESPONDING BUILDING DEPARTMENT.

Baserail Location	"V"	"W"	"Z"	"X"
FIA "C"	3.153	3.028	=SUM OF SECTION LENGTHS + 3.063 (<=141")	=ROUNDUP((Z-V-W)/16")

ALTERNATE BASERAIL WITH CURB REST
DIMENSIONS
FOR USE WITH ROOF CURB



Sealed: 7/6/2021

af c
AL-FAROOQ CORPORATION
ENGINEERS & PRODUCT DEVELOPMENT
9360 SUNSET DRIVE, SUITE 220
MIAMI, FLORIDA 33173 (C.A.N. 5538)
TEL. (305) 264-8100 FAX. (305) 262-6978

SOLUTION XT ROOFTOP AIR HANDLING UNIT
York/Johnson Controls Inc.
100 JCI Way
York, PA. 17406
TEL. (717) 978-3326

no	date	by	description

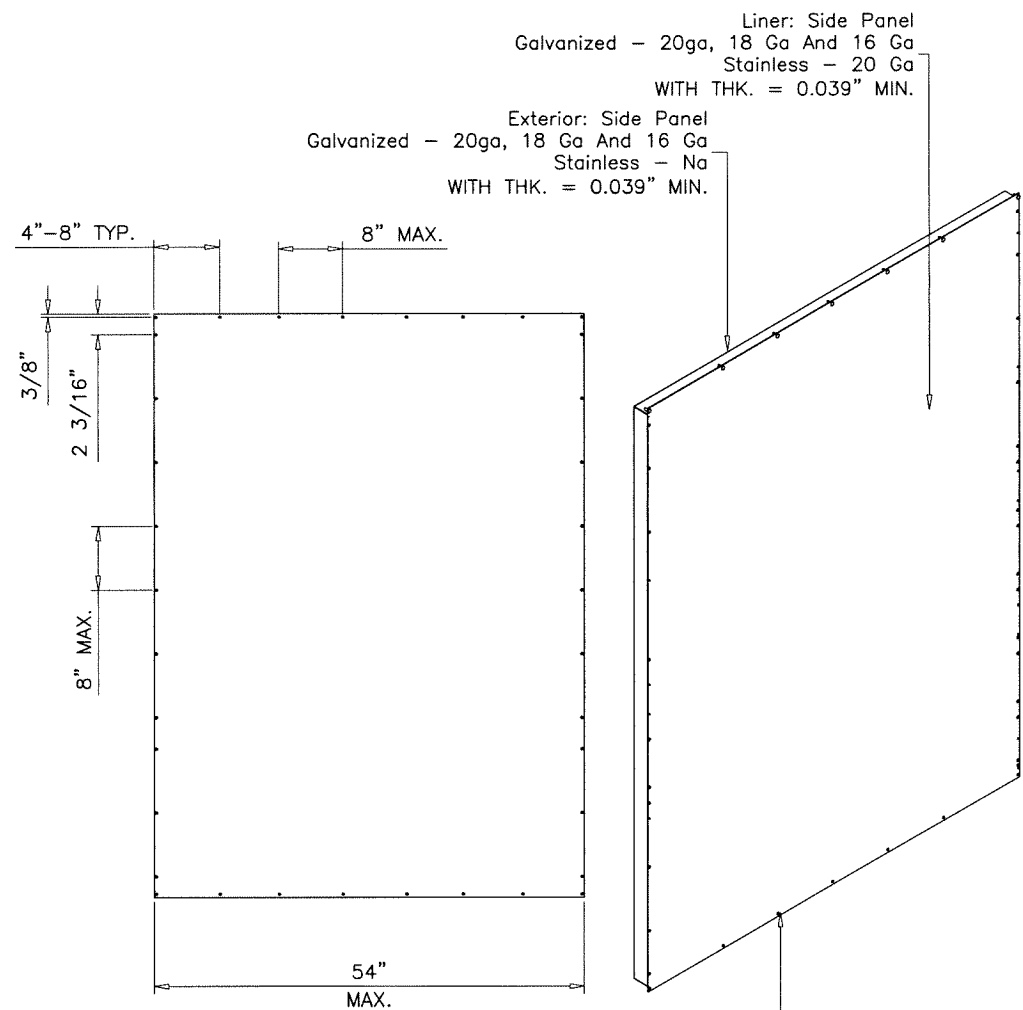
date: 11-19-13
scale: 1/4" = 1"
dr. by: TARIQ
chk. by:

drawing no.
13-05

sheet 11 of 16

COOLER\13-05YIC

TOP VIEW



Liner: Side Panel
Galvanized - 20ga, 18 Ga And 16 Ga
Stainless - 20 Ga
WITH THK. = 0.039" MIN.

Exterior: Side Panel
Galvanized - 20ga, 18 Ga And 16 Ga
Stainless - Na
WITH THK. = 0.039" MIN.

#14 X 1" SELF TAPPING PH SCREWS
3/8" FROM EACH END
AND 8" O.C. MAX.

SIDE VIEW

FRONT VIEW

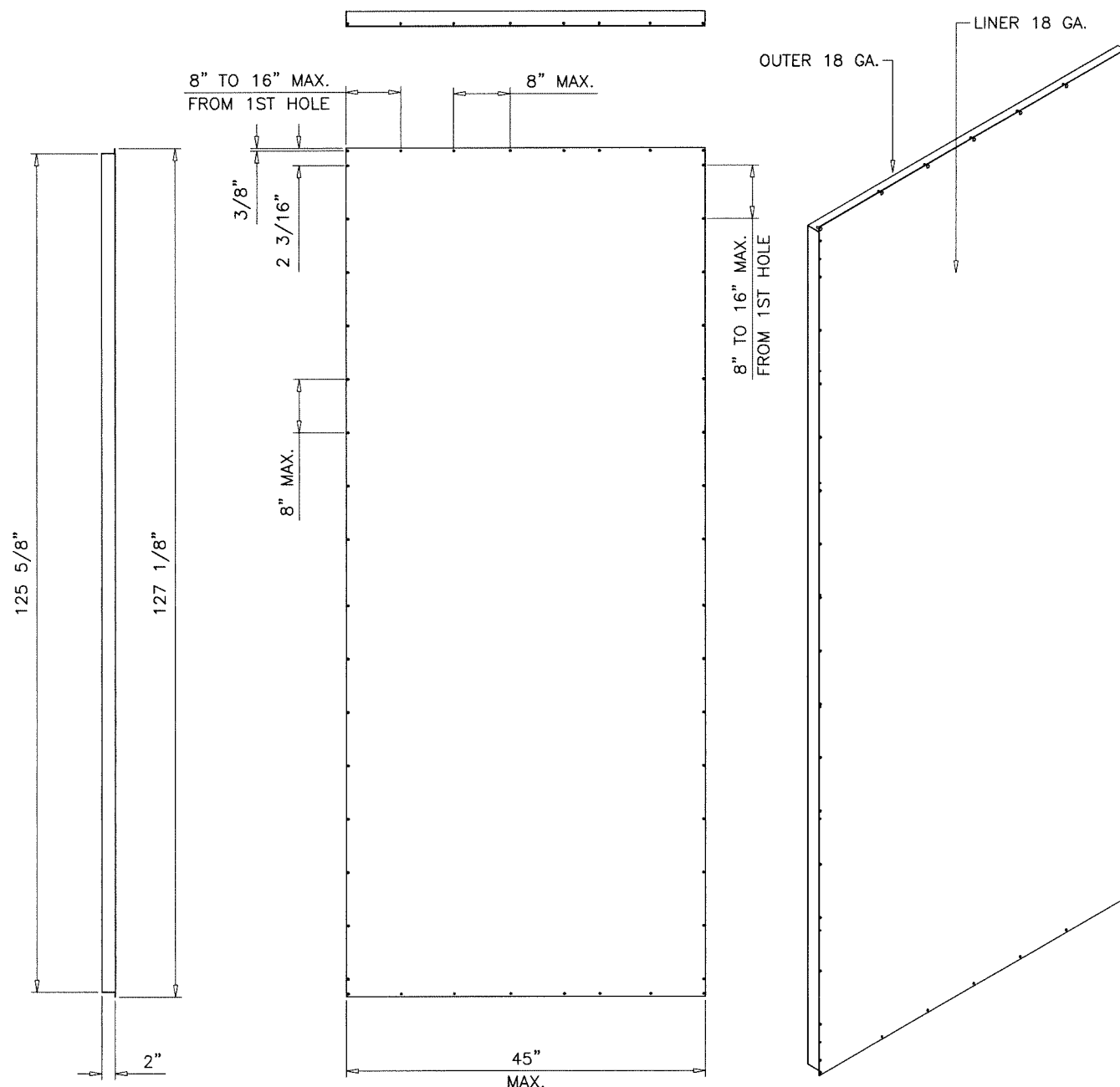
ISOMETRIC VIEW

SOLUTION XT-54W
WALL PANEL ASSY.

A BUTYL TAPE SHALL BE USED WHERE EACH
PANEL OVERLAPPED AND FASTENED TOGETHER

NOTE: SCREW SPACING AND
LOCATIONS ARE INDICATED.

TOP VIEW

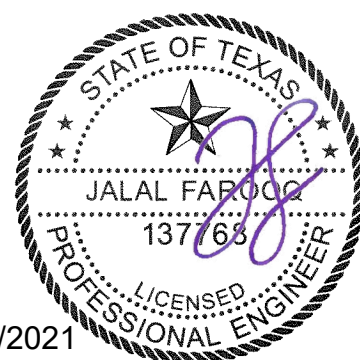


SIDE VIEW

FRONT VIEW

ISOMETRIC VIEW

SOLUTION XT-54W
FLR/ROOF PANEL ASSY.



Sealed: 7/6/2021

af c

AL-FAROOQ CORPORATION
ENGINEERS & PRODUCT DEVELOPMENT
9360 SUNSET DRIVE, SUITE 220 (C.A.N. 3538)
MIAMI, FLORIDA 33173
TEL. (305) 264-8100 FAX. (305) 262-6978

SOLUTION XT ROOFTOP AIR HANDLING UNIT

York/Johnson Controls Inc.
100 JCI Way
York, PA. 17406
TEL. (717) 978-3326

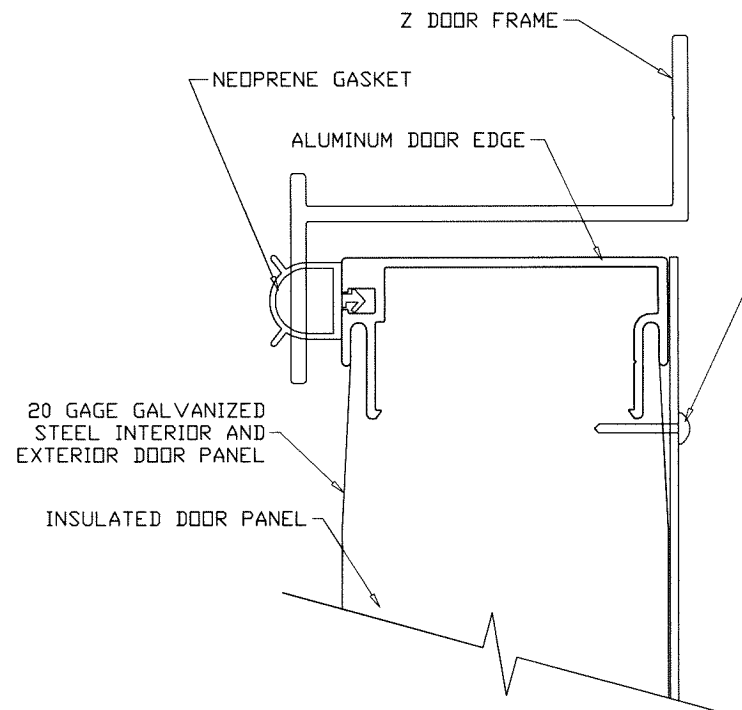
no	date	by	description

date: 11-19-13
scale: 1/2"=1'-0"
dr. by: TARIQ
chk. by:

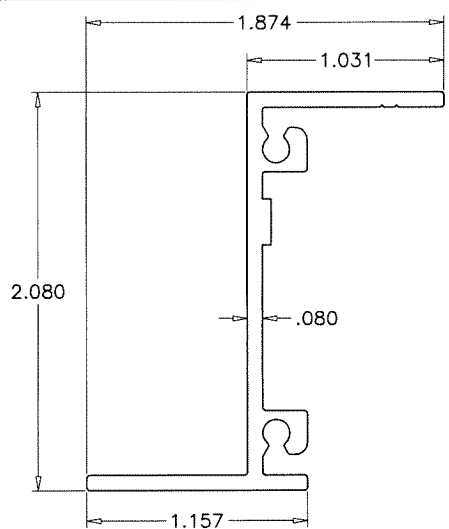
drawing no.
13-05

sheet 12 of 16

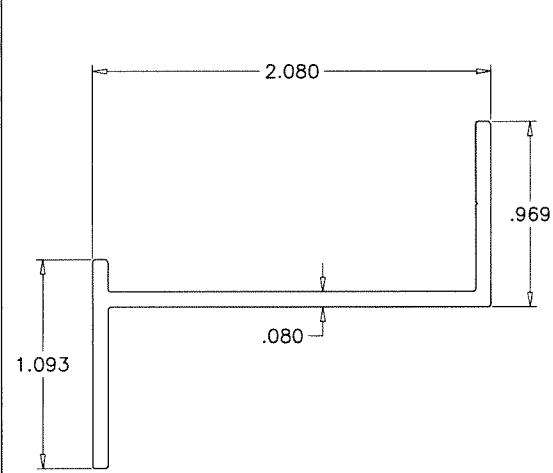
COOLER\13-05YIC



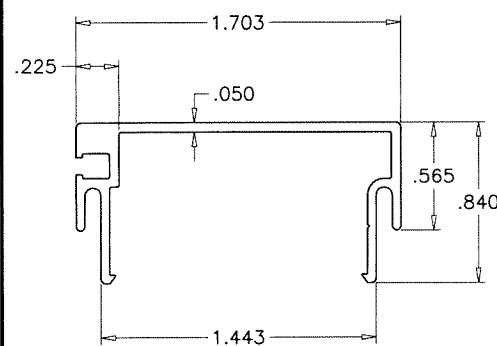
ENLARGED DOOR EDGE DETAIL



NON THERMAL VERTICAL Z FRAME
(6063-T5)



NON THERMAL HORIZONTAL Z FRAME
(6063-T5)

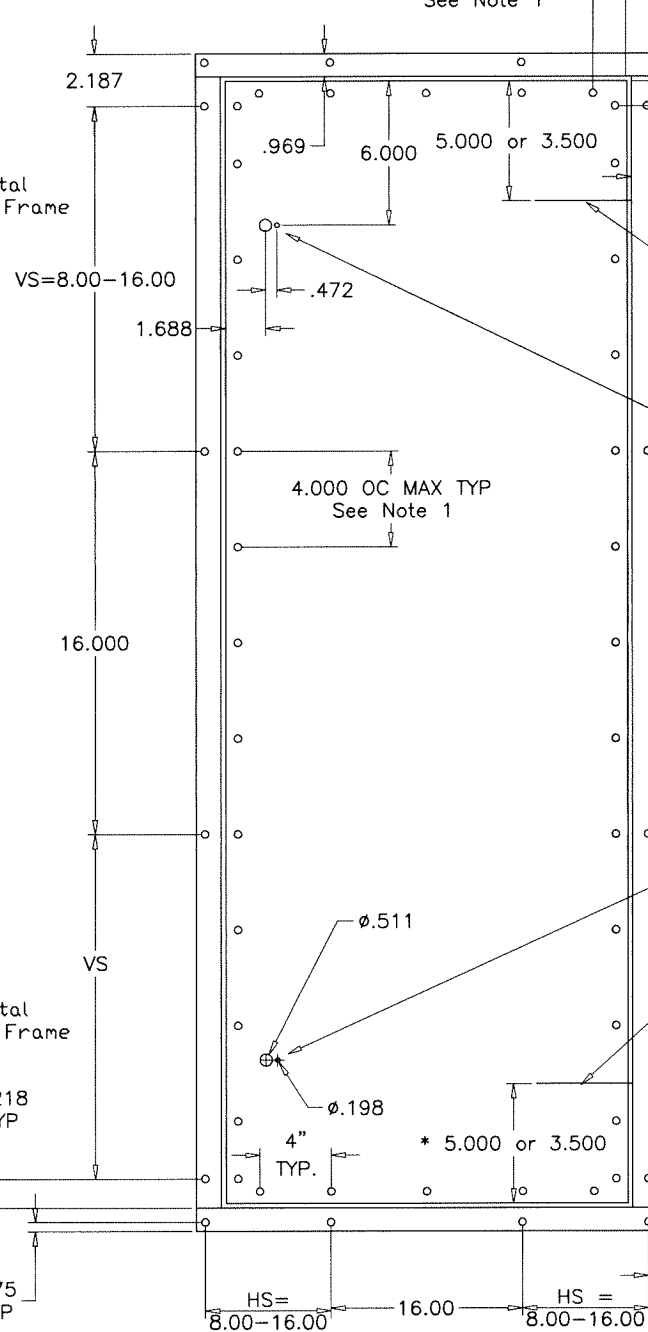
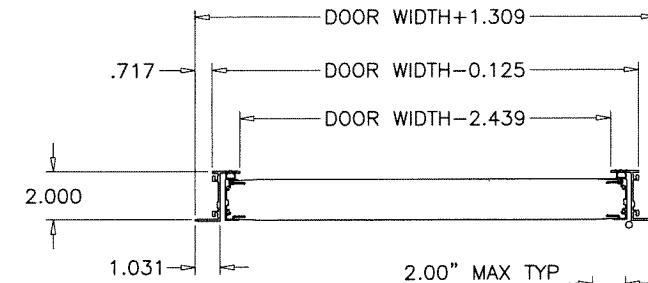
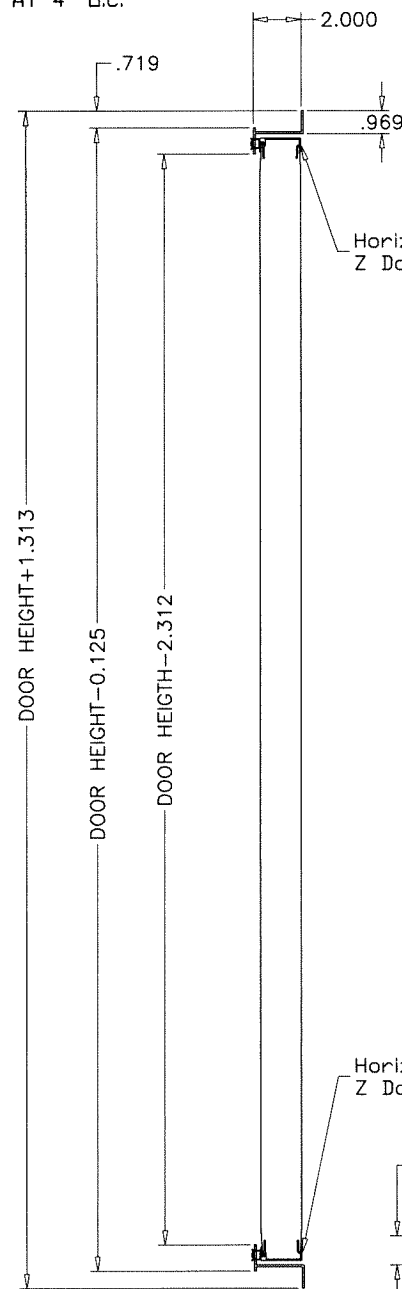


NON THERMAL DOOR PANEL EDGE EXTRUSION
(6063-T5)

HINGES:
 (2) HINGES FOR 14.88" TO 68.88" DOOR HEIGHTS POSITIONED 5" TO 3.5" FROM HINGE END TO DOOR TOP & BOTTOM.
 (3) HINGES FOR 71.88" TO 128.88" DOOR HEIGHTS ONE HINGE AT CENTER OF DOOR, THE OTHER TWO 5" FROM HINGE END TO DOOR TOP & BOTTOM.

NOTES:
 UNIT DOOR HEIGHT = UNIT HEIGHT - 6.125
 PIPE CHASE DOOR HEIGHT = UNIT HEIGHT - 3.125

NOTE:
 1. Access doors are 2.00" thick, double-wall construction of galvanized sheet steel. The interior and exterior liner construction shall consist of 20 gage sheet steel. Additionally, an 18 gage steel exterior panel shall be secured to the access door with #14 x 3/4" self-tapping sheet metal screws spaced 2" from the edge and at 4" O.C.



Hinge Start Location
 5.000: For Door Height = 20.88 thru 128.88
 3.500: For Door Height = 14.88 thru 17.88

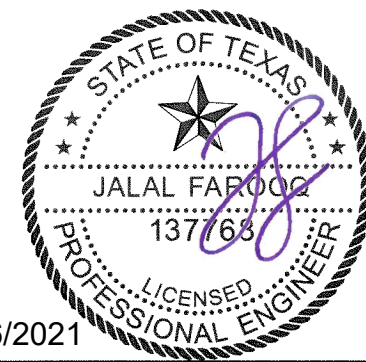
Handle Holes in Door Panel
 Located on Outside Surface
 Handles not installed

Handle Holes in Door Panel
 Handles not installed

Hinge Start Location
 5.000: For Door Height = 20.88 thru 128.88
 3.500: For Door Height = 14.88 thru 17.88

SOLUTION XT ACCESS DOOR OPTION #1

Sealed: 7/6/2021



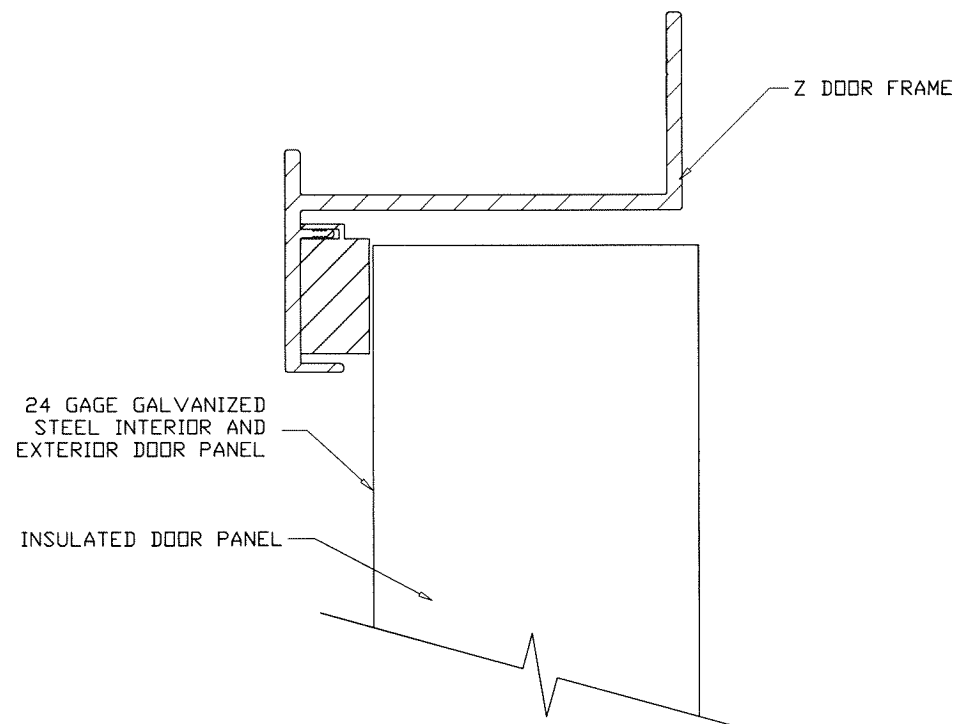
af c
AL-FAROOQ CORPORATION
 ENGINEERS & PRODUCT DEVELOPMENT
 9360 SUNSET DRIVE, SUITE 220
 MIAMI, FLORIDA 33173
 TEL. (305) 264-8100 FAX. (305) 262-6978
 (C.A.N. 5538)

SOLUTION XT ROOFTOP AIR HANDLING UNIT
York/Johnson Controls Inc.
 100 JCI Way
 York, PA, 17406
 TEL. (717) 978-3326

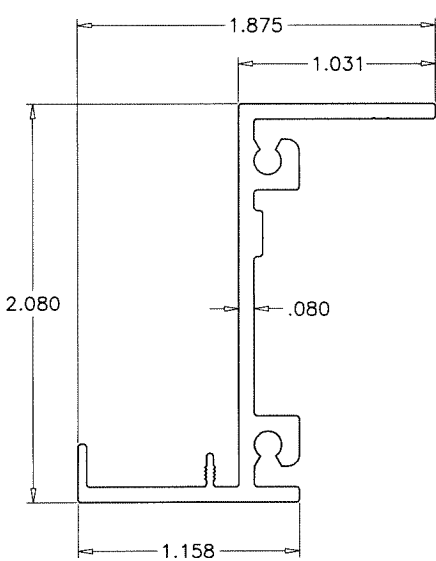
no	date	by	description

date: 11-19-13
 scale: 1/8" = 1"
 dr. by: TARIQ
 chk. by:
 drawing no.
13-05
 sheet 13 of 16

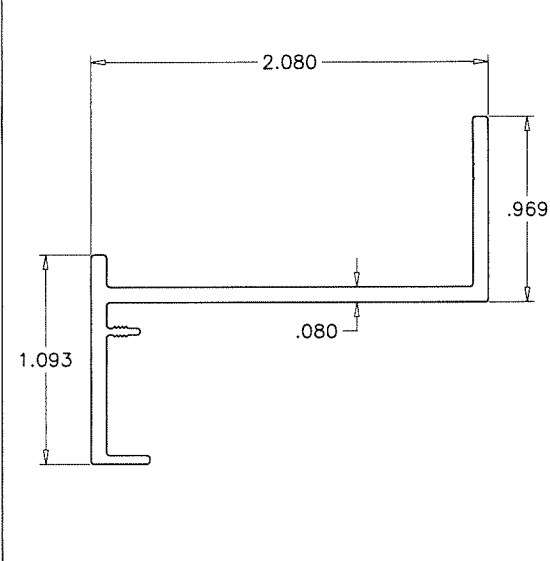
COOLER\13-05YIC



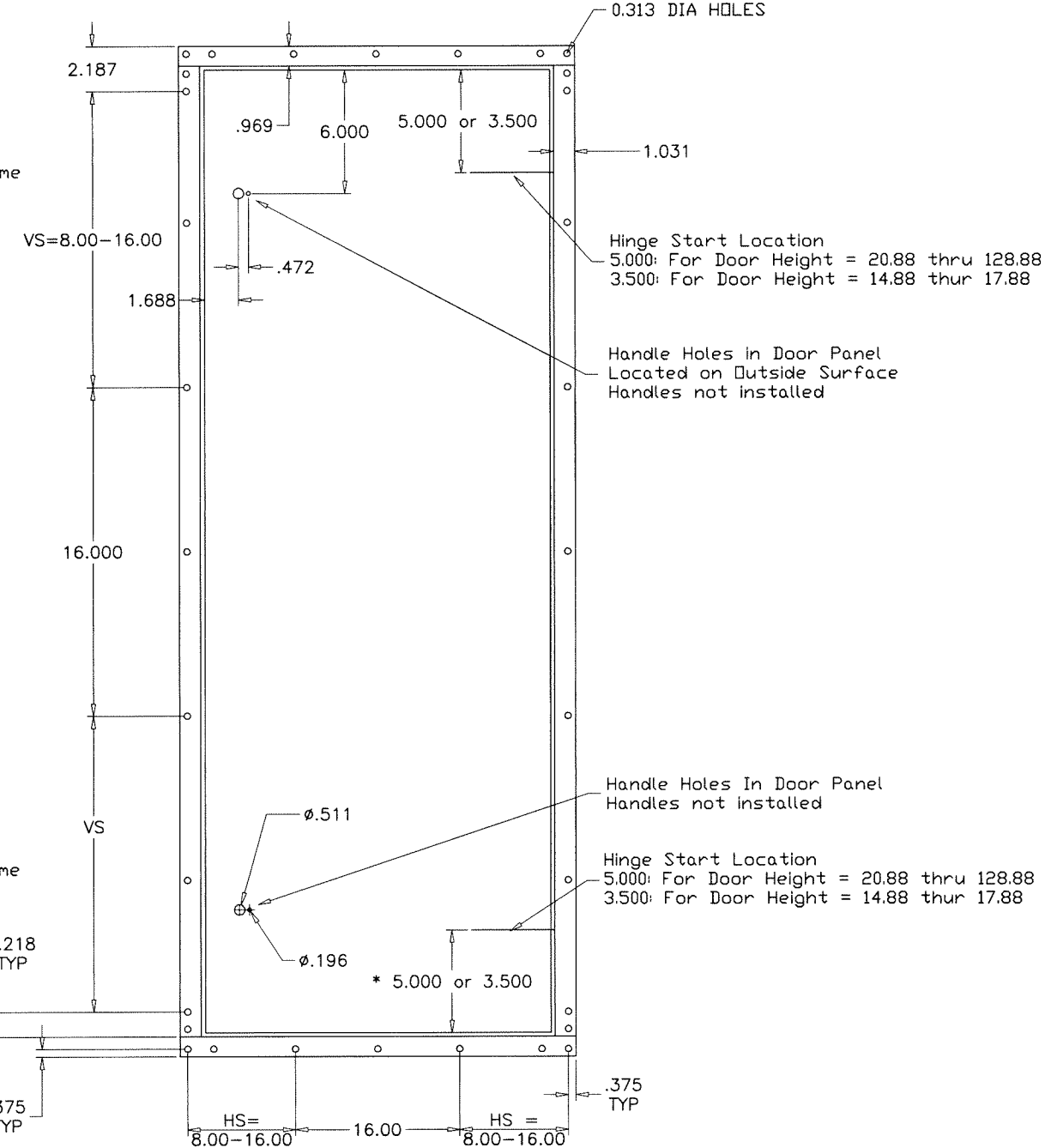
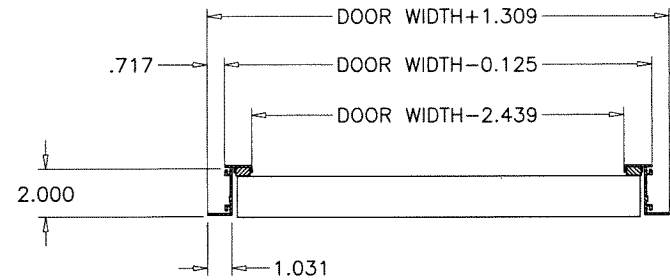
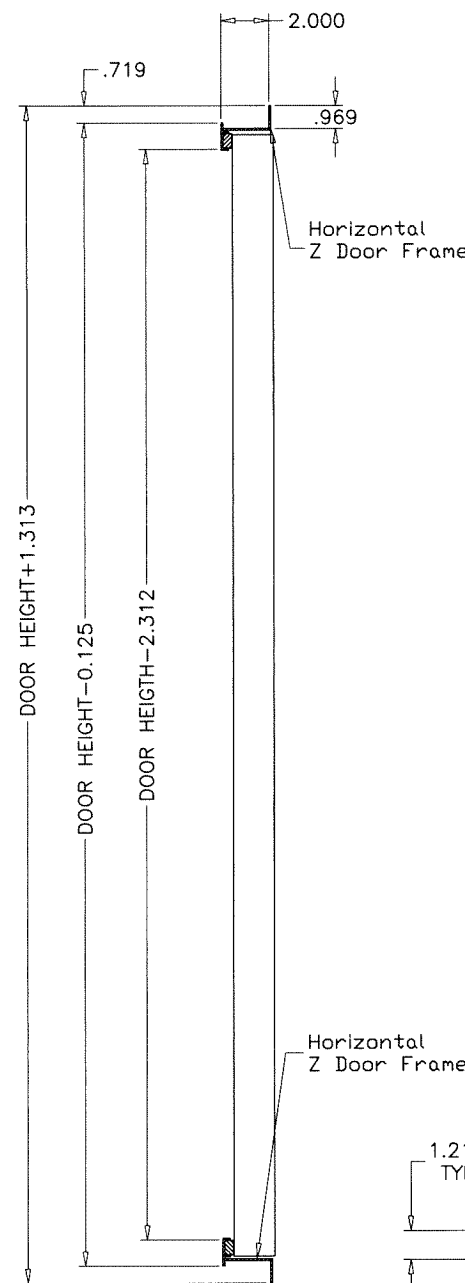
ENLARGED DOOR EDGE DETAIL



**NON THERMAL VERTICAL
Z FRAME
(6063-T5)**



**NON THERMAL HORIZONTAL
Z FRAME
(6063-T5)**



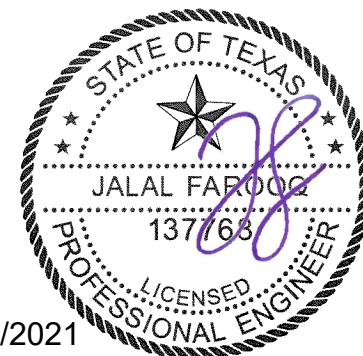
HINGES:
 (2) HINGES FOR 14.88" TO 68.88" DOOR HEIGHTS POSITIONED 5" TO 3.5" FROM HINGE END TO DOOR TOP & BOTTOM.
 (3) HINGES FOR 71.88" TO 128.88" DOOR HEIGHTS ONE HINGE AT CENTER OF DOOR, THE OTHER TWO 5" FROM HINGE END TO DOOR TOP & BOTTOM.

NOTES:
 UNIT DOOR HEIGHT = UNIT HEIGHT - 6.125
 PIPE CHASE DOOR HEIGHT = UNIT HEIGHT - 3.125

NOTE:
 1. Access doors are 2.00" thick, double-wall construction of galvanized sheet steel. The interior and exterior liner construction shall consist of 24 gage sheet steel.
 2. View area not available on Doors used for NOA constursted units.
 3. Door must show no water leakage at 6.0" W.C and no air leakage at negative 8.0" W.C

**SOLUTION XT
ACCESS DOOR
OPTION #2**

Sealed: 7/6/2021



af c
AL-FAROOQ CORPORATION
 ENGINEERS & PRODUCT DEVELOPMENT
 9360 SUNSET DRIVE, SUITE 220 (C.A.N. 3538)
 MIAMI, FLORIDA 33173
 TEL. (305) 264-8100 FAX. (305) 262-6978
 COOLER 13-05YIC

SOLUTION XT ROOFTOP AIR HANDLING UNIT
York/Johnson Controls Inc.
 100 JCI Way
 York, PA, 17406
 TEL. (717) 978-3326

no	date	by	description

date: 11-19-13
 scale: 1/8" = 1"
 dr. by: TARIQ
 chk. by:
 drawing no.
13-05
 sheet 14 of 16

NOTES:
 1. INSIDE DOOR HANDLES ARE OPTIONAL ON INDIVIDUAL DOOR LATCHES
 2. INSIDE DOOR HANDLES ARE OPTIONAL ON SINGLE POINT, MULT-LATCH DOORS
 3. NSIDE DOOR HANDLES ARE NOT AVAILABLE ON FF, AF, RF, HF & DI SEGMENTS.

** QTY OF DOOR LATCHES

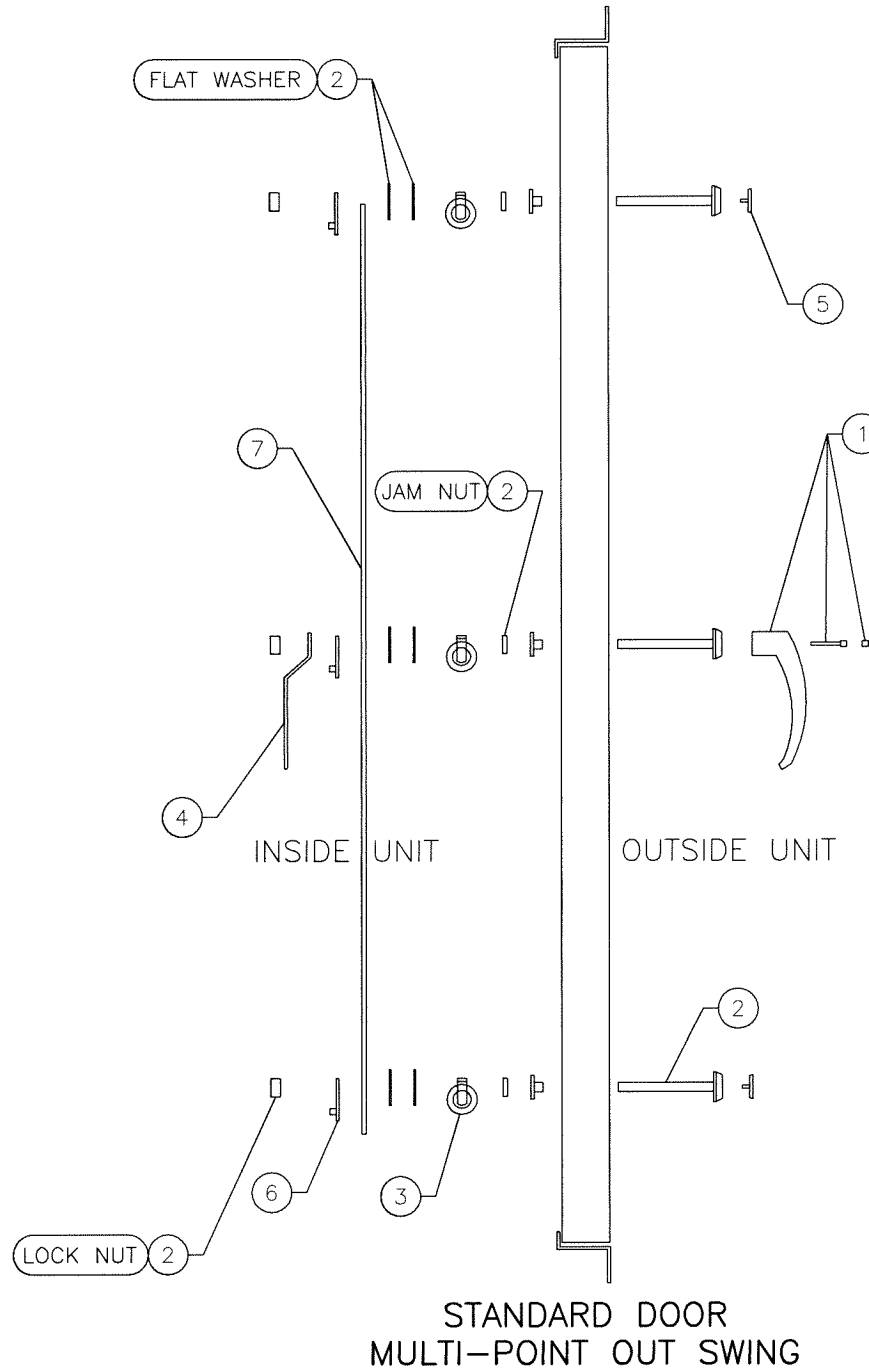
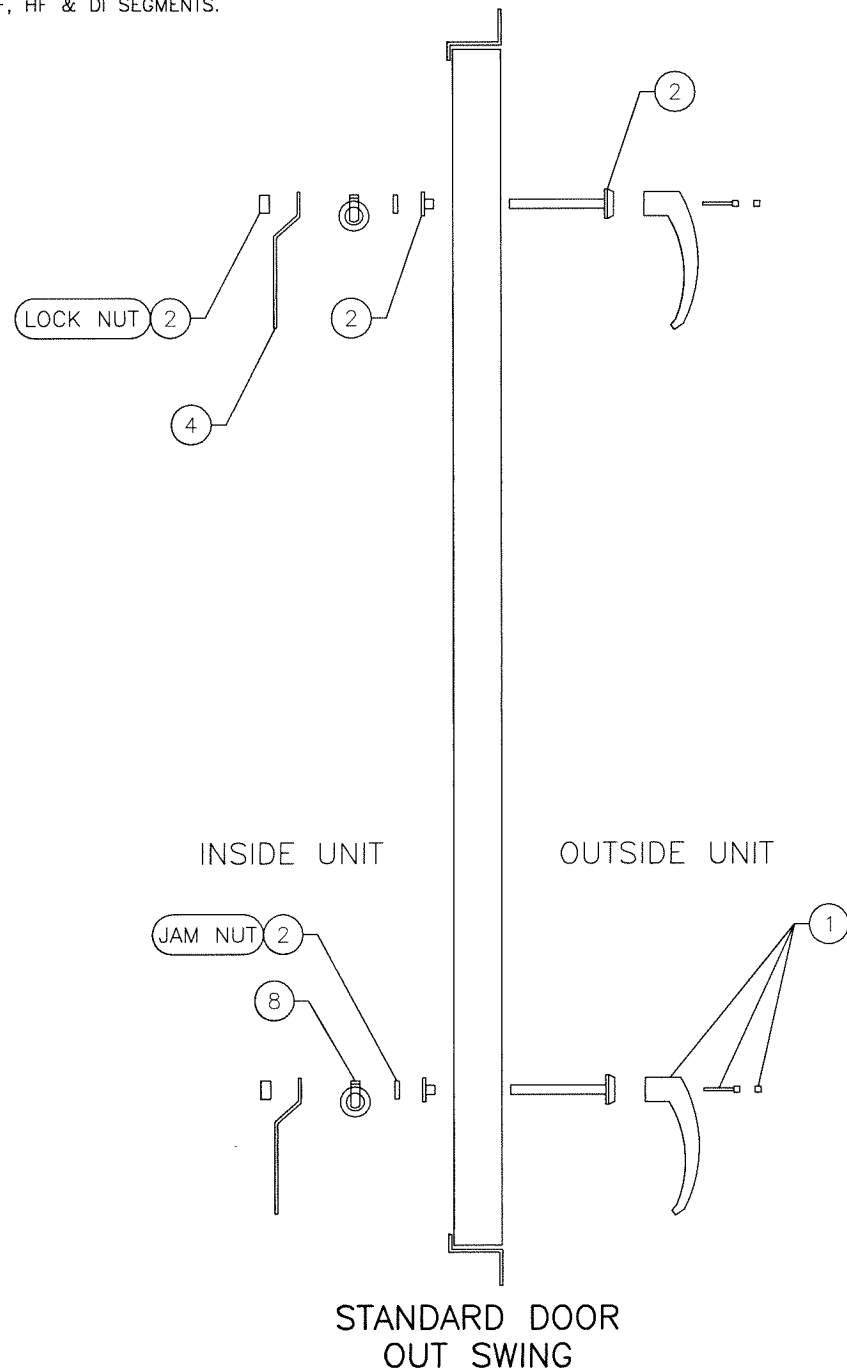
QTY	DOOR HEIGHT
2	20.88" - 68.88"
3	71.88" - 128.88"

ITEM	QTY	PART NO.	DESCRIPTION
STANDARD	1	**	034-12001-001 NL L-HANDLE W/SCREW&PLASTIC CAP
OPTIONAL	1	**	034-12001-007 KL L-HANDLE W/SCREW&PLASTIC CAP
OPTIONAL	1	**	034-12001-011 PL L-HANDLE W/SCREW&PLASTIC CAP
	2	**	034-12002-001 MECHANISM, LATCHING
	3	**	034-12002-011 CAM, ROLLER SNUB NOSE
OPTIONAL	4	**	034-12001-005 INSIDE HANDLE W/PLASTIC GRIP
	5	**	034-12002-007 COVER PLUG FOR LOCK
	6	**	034-12002-010 ADAPTER, LINKAGE
	7	**	086-02023-XXX ROD, 0.315" DIA XX LONG ZINC PLATED
	8	**	029-22088-001 CAM. ROLLER 0.708 DIA

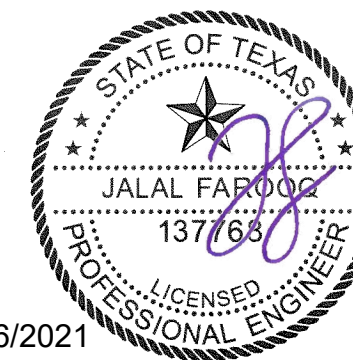
*NOTE:
 MULTIPLY QUANTITIES OF EACH ITEM ABOVE BY QUANTITY OF DOOR LATCHES BELOW TO GET PROPER QUANTITIES FOR THE VARIOUS DOOR HEIGHTS.

ROD LENGTH FOR DOOR HEIGHTS

DASH #	LENGTH	DOOR HEIGHT
001	10"	20.88"
002	13"	23.88"
003	16"	26.88"
004	19"	29.88"
005	22"	32.88"
006	25"	35.88"
007	28"	38.88"
008	31"	41.88"
009	34"	44.88"
010	37"	47.88"
011	40"	50.88"
012	43"	53.88"
013	46"	56.88"
014	49"	59.88"
015	52"	62.88"
016	55"	65.88"
017	58"	68.88"
018	61"	71.88"
019	64"	74.88"
020	67"	77.88"
021	70"	80.88"
022	73"	83.88"
023	76"	86.88"
024	79"	89.88"
025	82"	92.88"
026	85"	95.88"
027	88"	97.88"
028	91"	101.88"
029	94"	104.88"
030	97"	107.88"
031	100"	110.88"
032	103"	113.88"
033	106"	116.88"
034	109"	119.88"
035	112"	122.88"
036	115"	125.88"
037	118"	128.88"



LATCHING PARTS
 OUT SWING DOOR



Sealed: 7/6/2021

af c
AL-FAROOQ CORPORATION
 ENGINEERS & PRODUCT DEVELOPMENT
 9360 SUNSET DRIVE, SUITE 220
 MIAMI, FLORIDA 33173 (C.A.N. 3538)
 TEL. (305) 264-8100 FAX. (305) 262-6978
 COOLER 13-05YC

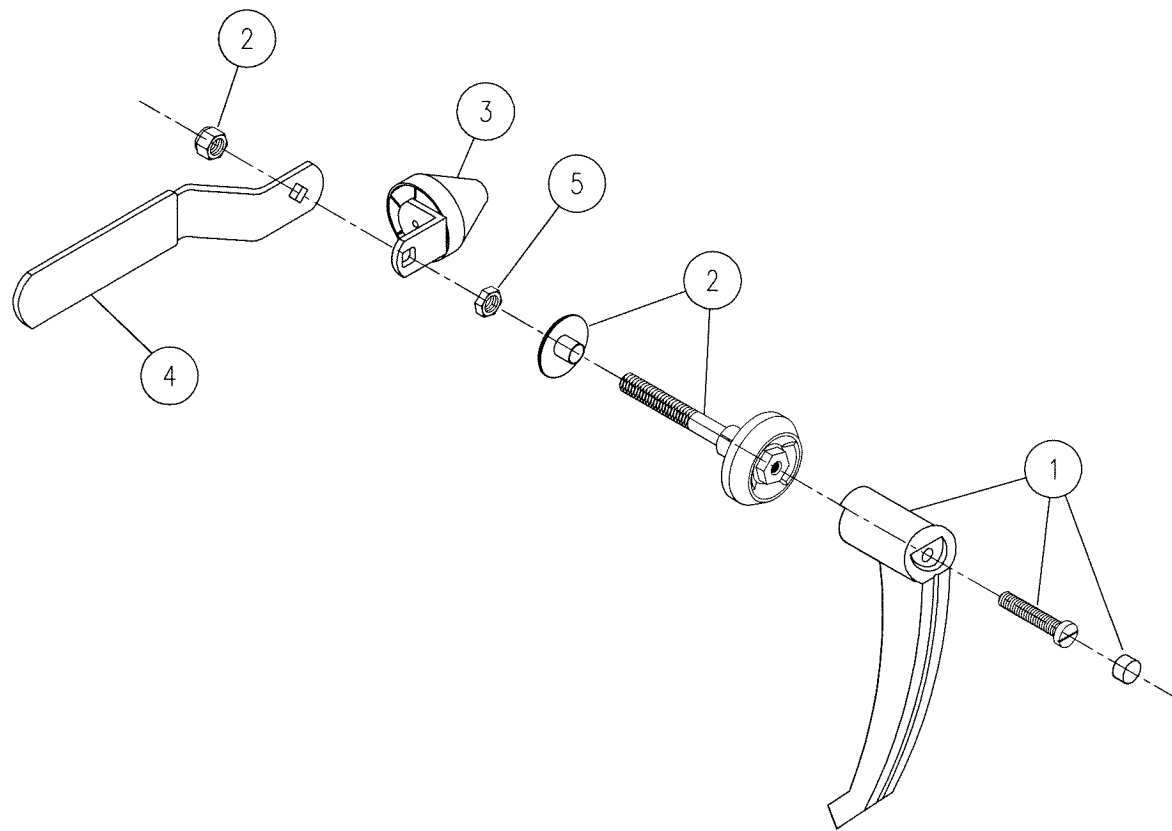
SOLUTION XT ROOFTOP AIR HANDLING UNIT
York/Johnson Controls Inc.
 100 JCI Way
 York, PA, 17406
 TEL. (717) 978-3326

revisions:

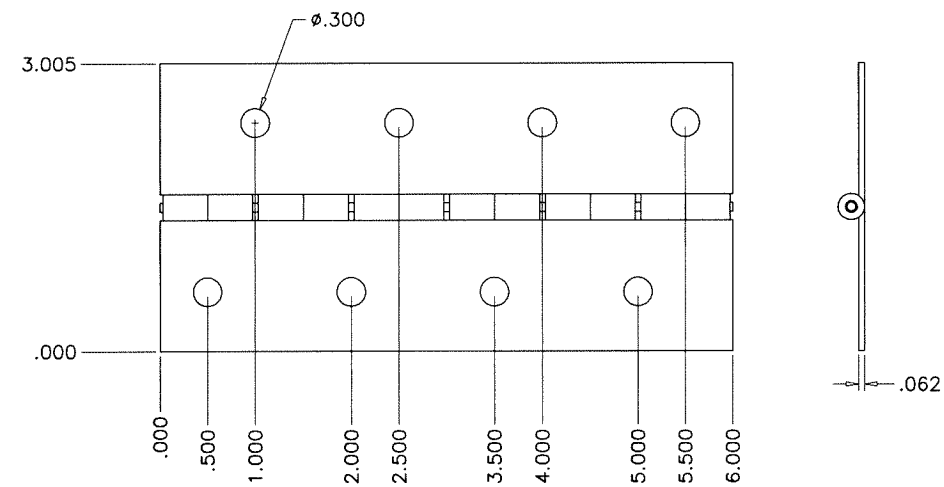
no	date	by	description

date: 11-19-13
 scale: -
 dr. by: TARIQ
 chk. by:

drawing no.
13-05
 sheet 14.1 of 16



Material: 16 GA, #304 Stainless Steel

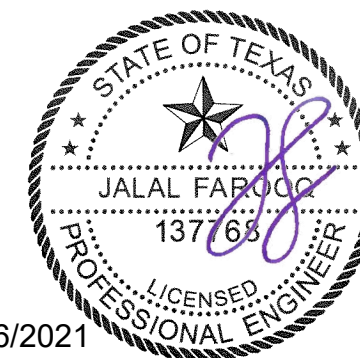


NOTES:
1. CLOCKWISE ROTATION IS SHOWN. MIRROR ASSY FOR COUNTER-CLOCKWISE ROTATION.

ITEM	PART NO.	DESCRIPTION	QTY/ ASSY	REF. DWG.
	391 20016 001	2" OS LATCH ASSY PLT		
1	029 23801 010	DOOR HANDLE 265076-00	1	
2	029 23801 012	DOOR LATCH HOUSING 265078-S50	1	
3	029 23801 013	DOOR ROLLER CAM 2321S07-R01	1	
4	029 23801 015	DOOR INSIDE HANDLE 265076-50	1	
5	021 30415 001	NUT,JAM,PLTD,.22THK,.38-16	1	

LATCH ASSEMBLY WITH PLATED FASTENERS
OUT SWING DOOR

HINGE



Sealed: 7/6/2021

af c
AL-FAROOQ CORPORATION
ENGINEERS & PRODUCT DEVELOPMENT
9360 SUNSET DRIVE, SUITE 220
MIAMI, FLORIDA 33173 (C.A.N. 3538)
TEL. (305) 264-8100 FAX. (305) 262-6978
COOLER\13-05YIC

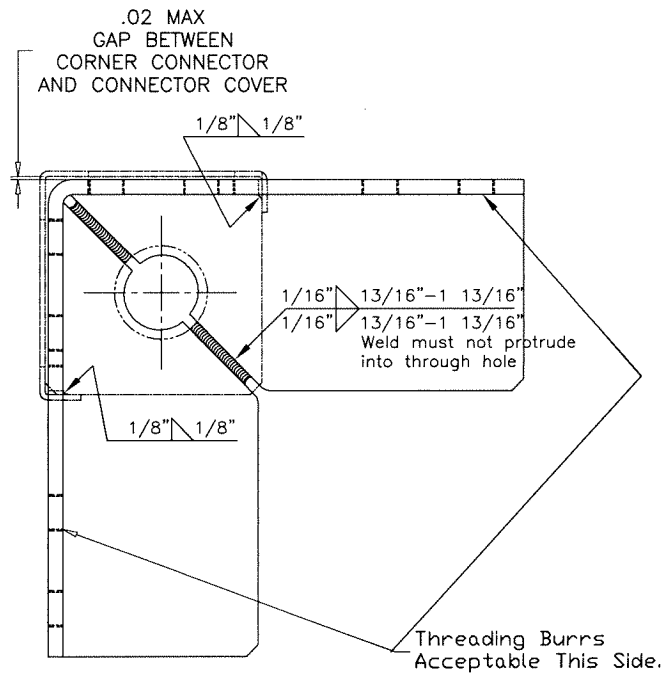
SOLUTION XT ROOFTOP AIR HANDLING UNIT
York/Johnson Controls Inc.
100 JCI Way
York, PA. 17406
TEL. (717) 978-3326

revisions:	no	date	by	description

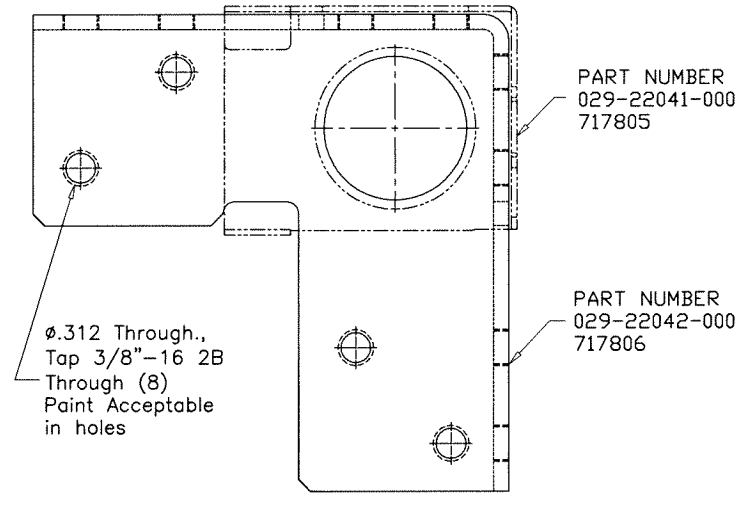
date: 11-19-13
scale: -
dr. by: TARIQ
chk. by:

drawing no.
13-05

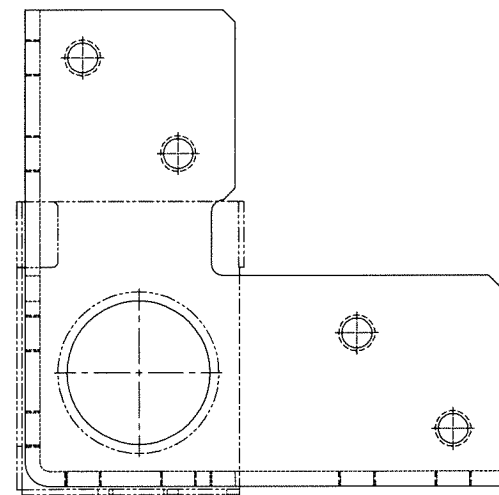
sheet 14.2 of 16



TOP VIEW



EXTERIOR SIDE VIEW



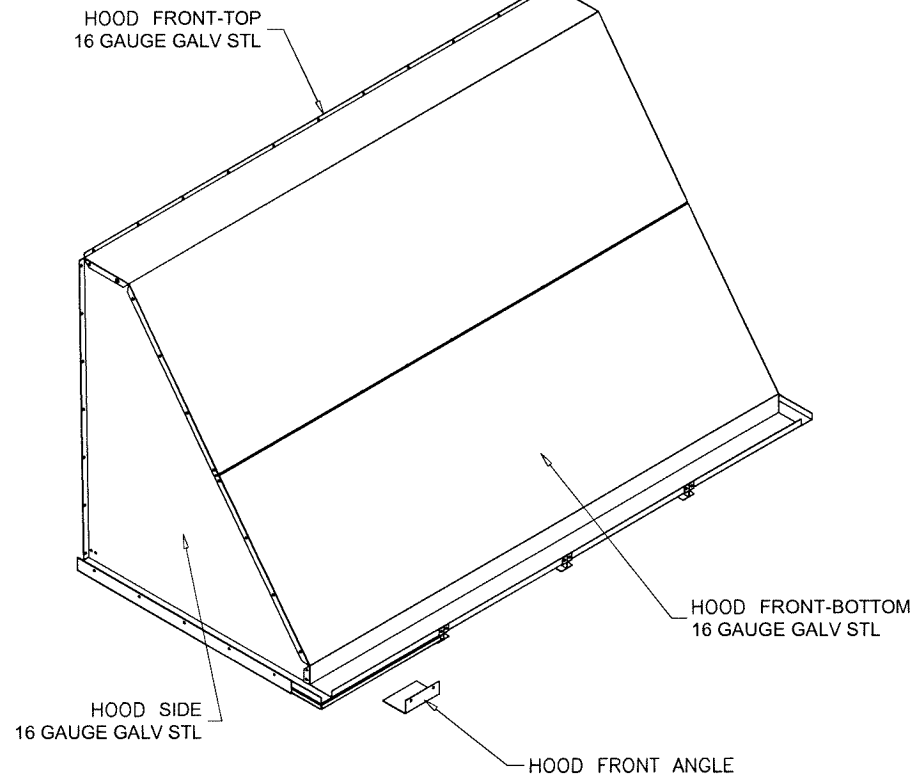
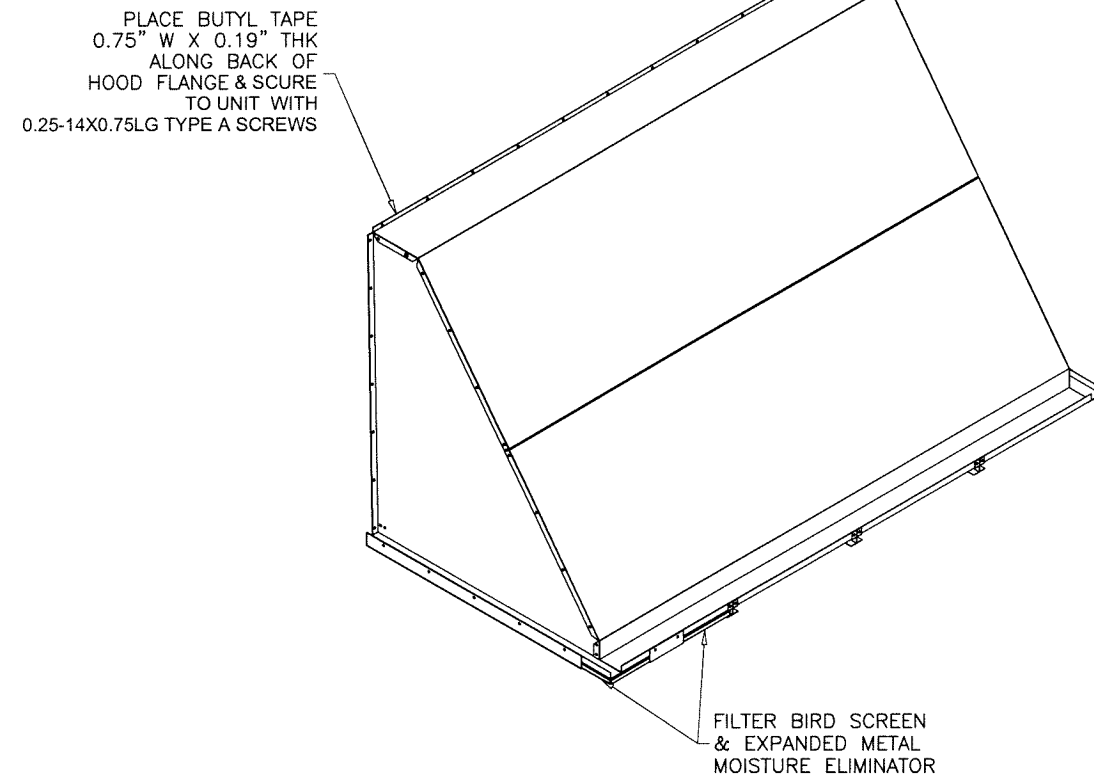
INTERIOR SIDE VIEW

CORNER CONNECTOR
DETAIL

1/2" = 1"

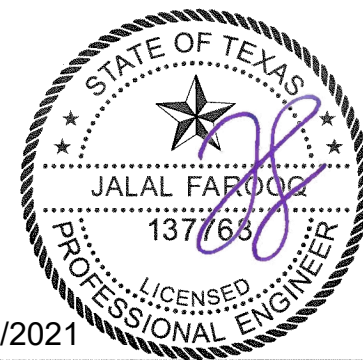
Notes:

- 1) Gap can not accept 1/2" wide feeler stock.
- 2) Finish - Anodized Silver Powder Coat Paint.
- 3) Sub-component dimensions are prior to paint.
- 4) 8 gage stamped and formed galvanized steel corner



OUTDOOR AIR
HOOD ASSEMBLY

1/2" = 1'-0"



Sealed: 7/6/2021

afc
AL-FAROOQ CORPORATION
ENGINEERS & PRODUCT DEVELOPMENT
9360 SUNSET DRIVE, SUITE 220 (C.A.N. 3538)
MIAMI, FLORIDA 33173 TEL. (305) 264-8100 FAX. (305) 262-6978
COOLER\13-05YIC

SOLUTION XT ROOFTOP AIR HANDLING UNIT
York/Johnson Controls Inc.
100 JCI Way
York, PA, 17406
TEL. (717) 978-3326

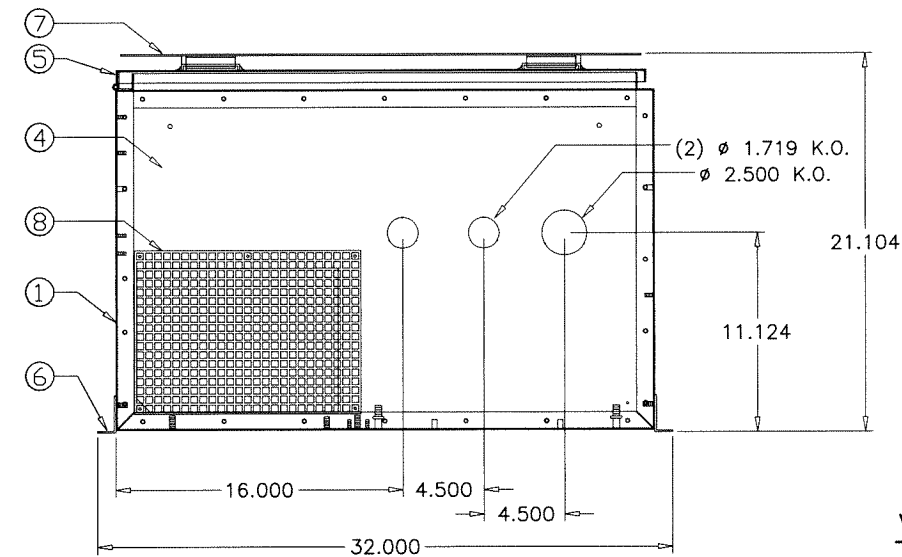
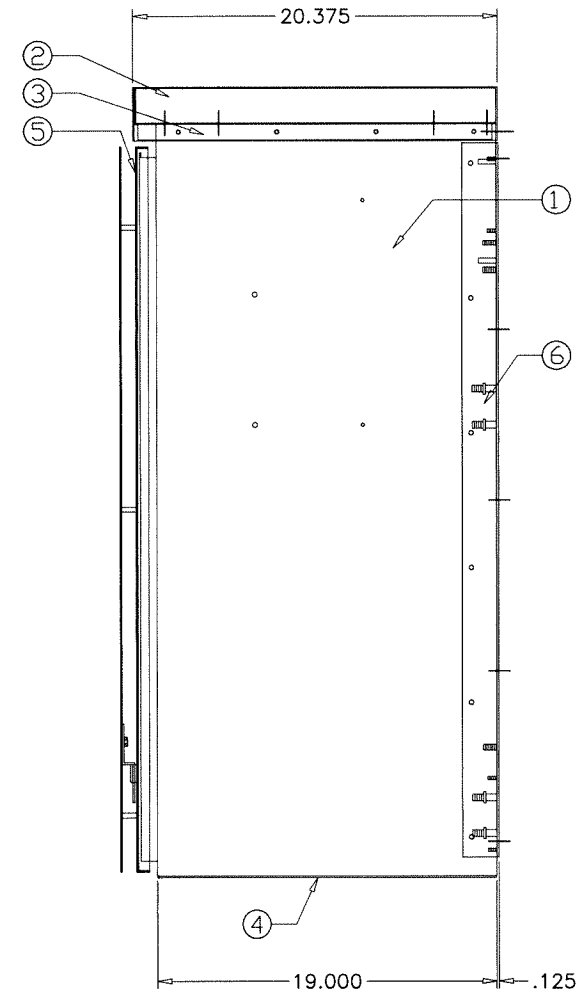
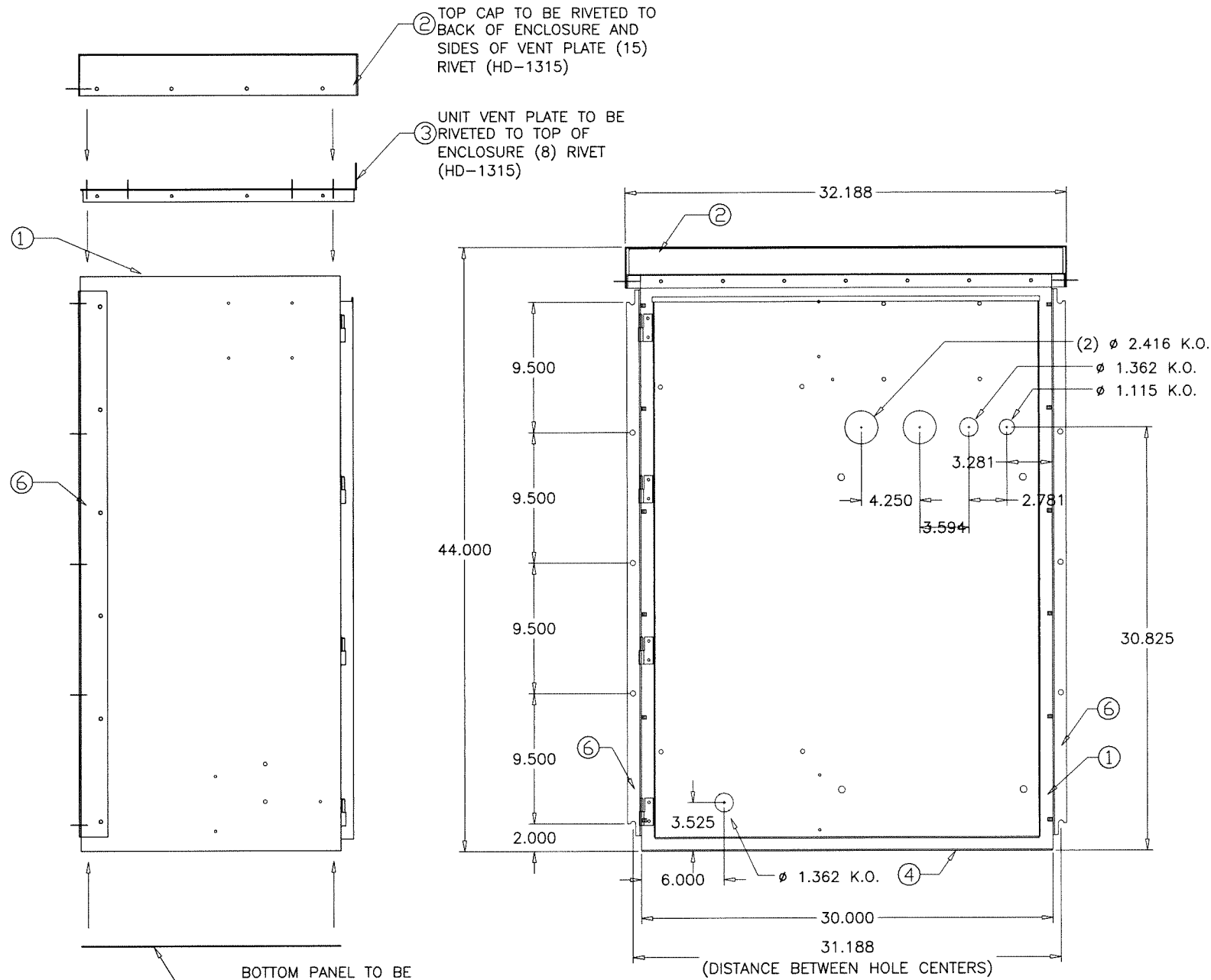
no	date	by	description

date: 11-19-13
scale: -
dr. by: TARIQ
chk. by:

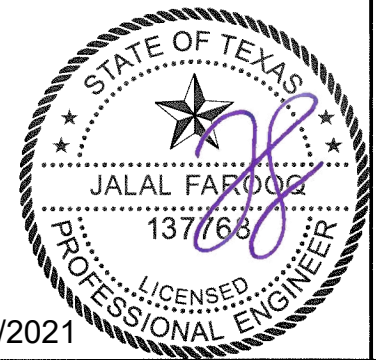
drawing no.
13-05

sheet 15 of 16

PARTS LIST			
ITEM	DRAWING NO.	ITEM DESCRIPTION	QTY.
1	207931	ENCLOSURE ASSEMBLY	1
2	207935	ENCLOSURE TOP CAP	1
3	207936	UNIT VENT PLATE	1
4	207937	BASE PANEL	1
5	207938	ENCLOSURE DOOR	1
6	207942	MOUNTING RAIL	2
7	207943	SUN SHIELD (DOOR)	1
8	207827	GRILLE	1



**VENTED NEMA 3R
ENCLOSURE ASSEMBLY**



Sealed: 7/6/2021

af c

AL-FAROOQ CORPORATION
ENGINEERS & PRODUCT DEVELOPMENT
9360 SUNSET DRIVE, SUITE 220
MIAMI, FLORIDA 33173
TEL. (305) 264-8100 FAX. (305) 262-6978
(C.A.N. 3538)

SOLUTION XT ROOFTOP AIR HANDLING UNIT

York/Johnson Controls Inc.
100 JCI Way
York, PA. 17406
TEL. (717) 978-3326

no.	date	description

date: 11-19-13
scale: 3/32" = 1"
dr. by: TARIQ
chk. by:

drawing no.
13-05

sheet 16 of 16

COOLER 13-05YIC