

DRAWING INDEX:

1. INDEX TO DRAWINGS AND NOTES.
2. 1606DHPM LOUVER- FLANGE FRAME SLEEVE MOUNT
3. 1606DHPM LOUVER- CONTINUOUS ANGLE MOUNT
4. 1606DHPM / DAMPER- FLANGE FRAME SLEEVE MOUNT
5. 1606DHPM / DAMPER- CONTINUOUS ANGLE MOUNT
6. 1606DHPM LOUVER- FLANGE FRAME SLEEVE MOUNT HEAD & SILL DETAIL
7. 1606DHPM LOUVER- CONTINUOUS ANGLE MOUNT HEAD & SILL DETAIL.
8. 1606DHPM LOUVER- BLADE SUPPORT DETAIL.
9. 1606DHPM LOUVER- FLANGE FRAME SLEEVE MOUNT JAMB DETAIL
10. 1606DHPM LOUVER- CONTINUOUS ANGLE MOUNT JAMB DETAIL.
11. 1606DHPM LOUVER- FLANGE FRAME SLEEVE MOUNT MULLION DETAIL.
12. 1606DHPM LOUVER- CONTINUOUS ANGLE MOUNT MULLION DETAIL.
13. 1606DHPM LOUVER / DAMPER FLANGE FRAME W/ SLEEVE & MULLION ANGLE MOUNT HEAD & SILL DETAIL.
14. 1606DHPM / DAMPER- FLANGE FRAME SLEEVE MOUNT JAMB AND MULLION DETAIL
15. 1606DHPM LOUVER / DAMPER CONTINUOUS ANGLE MOUNT JAMB AND MULLION DETAIL.
16. 1606DHPM LOUVER W/ AND W/O DAMPER- SLEEVE / CONTINUOUS MOUNT PART PROFILES.
17. 1606DHPM LOUVER W/ AND W/O DAMPER- SLEEVE / CONTINUOUS MOUNT PART PROFILES.
18. MULLION ANGLE BACK OF THE WALL MOUNT
19. 1606DHPM LOUVER W/ AND W/O DAMPER AVAILABLE SHAPES
20. 1606DHPM LOUVER W/ AND W/O DAMPER- SLEEVE / CONTINUOUS MOUNT BILL OF MATERIAL.
21. 1606DHP LOUVER W/ AND W/O DAMPER - NOTES AND FASTENER SCHEDULE



NOTES:

- 1) THE 1606DHPM HAS BEEN TESTED IN ACCORDANCE WITH THE MIAMI-DADE COUNTY PROTOCOLS TAS - 100 (A), TAS-201, 202, & 203 FOR LARGE MISSILE IMPACT, UNIFORM PRESSURE AND CYCLIC WIND PRESSURE.
- 2) THIS LOUVER SYSTEM IS APPROVED FOR APPLICATIONS WITH DESIGN PRESSURES OF +/- 150 PSF OR LESS
- 3) THIS LOUVER SYSTEM IS NON-BEARING AND IS NOT DESIGNED TO WITHSTAND BUILDING DEAD LOADS.
- 4) LOUVER ANCHORS ARE REVIEWED FOR ATTACHMENT INTO STEEL, CONCRETE, MASONRY, OR TIMBER SUBSTRUCTURE. MINIMUM EDGE DISTANCE AND EMBEDMENT REQUIREMENTS ARE SHOWN. NAILOR IND. DOES NOT DETERMINE THE STRUCTURE INTEGRITY OF THE SUBSTRUCTURE.
- 5) MAXIMUM SINGLE SECTION SIZE : 72" WIDE X 120" HIGH.
- 6) MAXIMUM ASSEMBLED LOUVER SIZE UNLIMITED WIDE X 120" HIGH. MAX. MULLION SPACING IS 72".

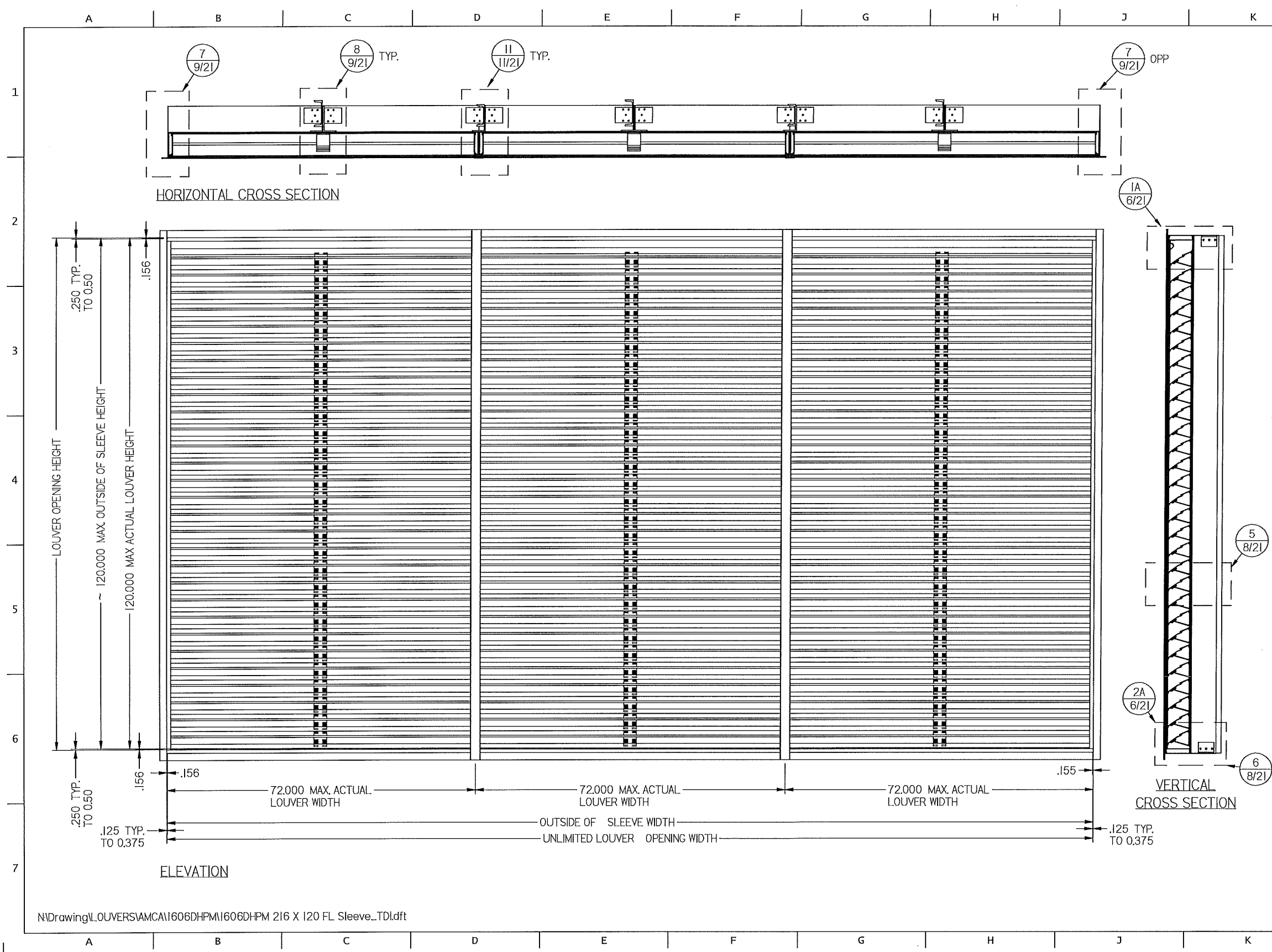
TESTS PERFORMED:

TAS-100 (A) WIND DRIVEN RAIN RESISTANCE
 TAS-201 LARGE MISSILE IMPACT
 TAS-202 UNIFORM STATIC AIR PRESSURE TEST
 TAS-203 CYCLIC WIND PRESUSRE TEST
 DESIGN PRESSURE RATING 150 PSF
 2018 IBC
 2018 IRC

N:\Drawing\L\OUVER\AMCA\1606DHPM\1606DHPM 216 X 120 FL Sleeve_TDL.dft

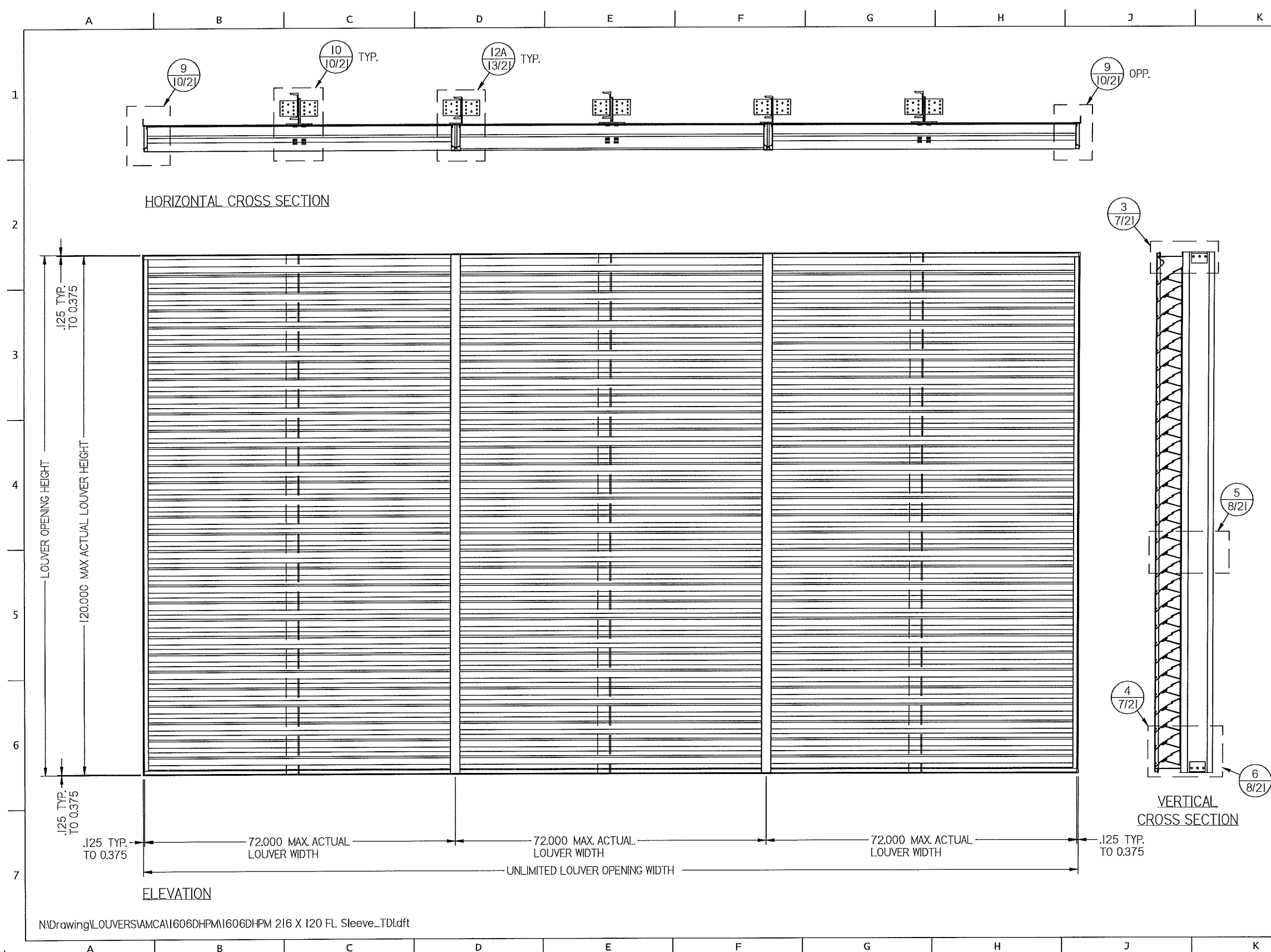
DWN BY: fcortinas DATE: 11/2/2020	CHK BY: Mastourian SCALE: NTS	SHEET: 1 OF 21 DWG. NO. 1606DHPM	REV B
 Nailor Industries Inc. 4714 Winfield Road Houston, TX 77039 www.nailor.com TEL: 281-590-1172 FAX: 281-590-3086		TITLE: 1606DHPM LOUVER W/ AND W/O DAMPER INDEX	
 BYRON BUELL HAGAN 69922 PROFESSIONAL ENGINEER STATE OF TEXAS		REV A_ON PAGE 7 OF 11; 11 OF 21; 12 OF 21; 14 OF 21; 15 OF 21; 16 OF 21; 20 OF 21 REV B_ON PAGE 1 OF 21, ADDED TESTS 2018 IBC, 2018 IRC DELETED NOTE #7	

Byron Buell Hagan
 11/2/20



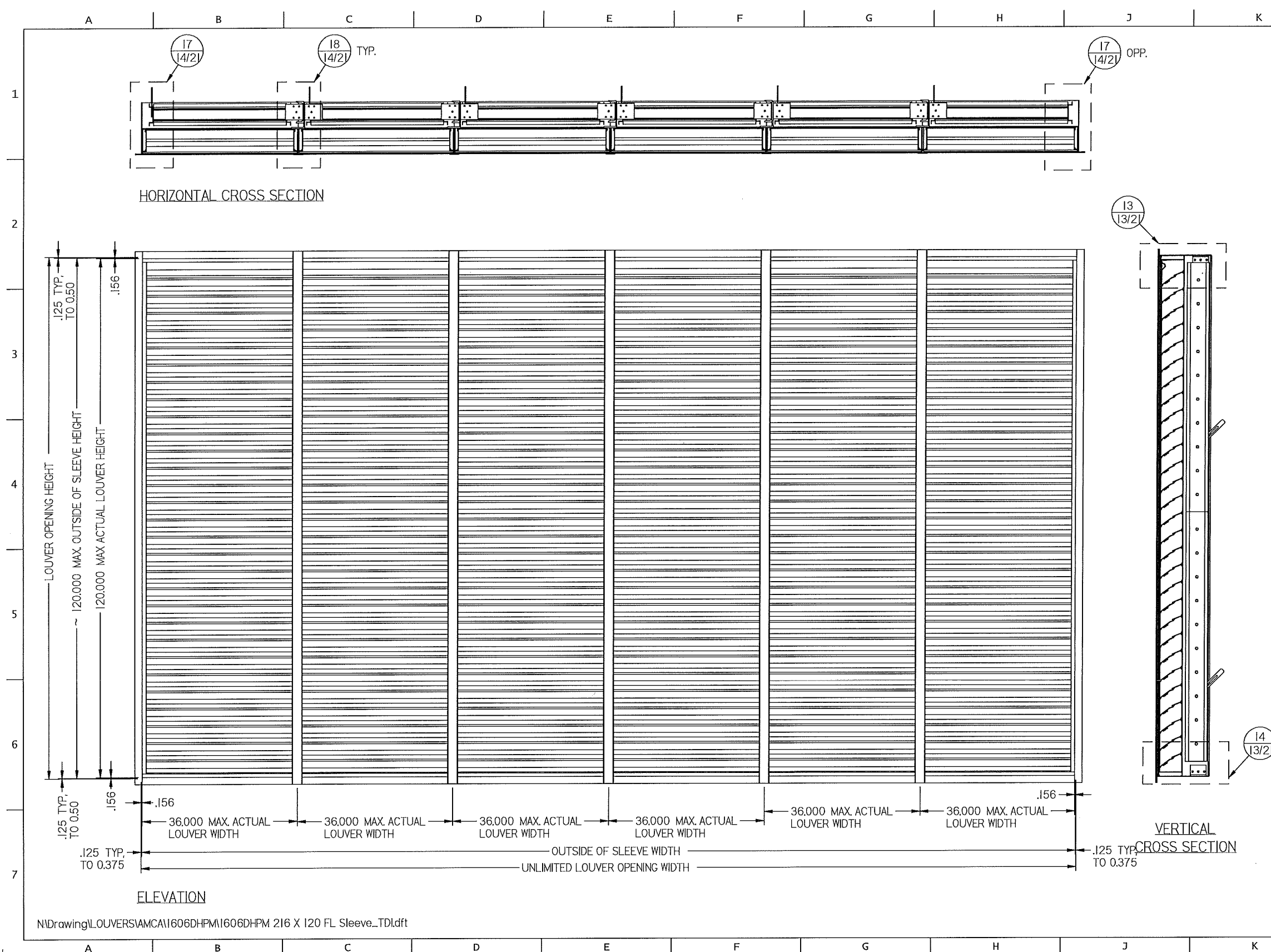
N:\Drawing\LOUVERS\AMCA\1606DHPM\1606DHPM 216 X 120 FL Sleeve_TDI.dft

<p>Nailor Industries Inc. 4714 Winfield Road Houston, TX 77039 www.nailor.com TEL: 281-590-1172 FAX: 281-590-3086</p>	DWN BY: fcartinas DATE: 11/2/2020	CHK BY: Mastourian SCALE: NTS	SHEET: 2 OF 21 DWG. NO. 1606DHPM
	TITLE: 1606DHPM LOUVER FLANGE FRAME SLEEVE MOUNT		REV. B
<p>BYRON BUELL HAGAN 69922 LICENSED PROFESSIONAL ENGINEER STATE OF TEXAS</p> <p><i>Byron Buell Hagan</i> 11/2/20</p>			



N:\Drawing\Louvers\AMCA\1606DHPM\1606DHPM 216 X 120 FL Sleeve_TDL.dft

DWN BY: fcortinas	CHK BY: Mastourian	SCALE: NTS	SHEET: 3 OF 21	REV	B
DATE: 11/2/2020				DWG. NO.	1606DHPM
Nailor Industries Inc. 4714 Winfield Road Houston, TX 77039 www.nailor.com TEL: 281-590-1172 FAX: 281-590-3086		TITLE: 1606DHPM LOUVER COUNTINOUS ANGLE MOUNT			
				11/2/20	



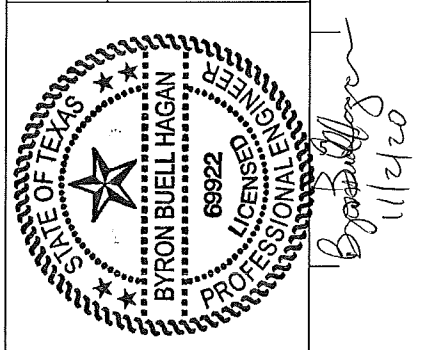
HORIZONTAL CROSS SECTION

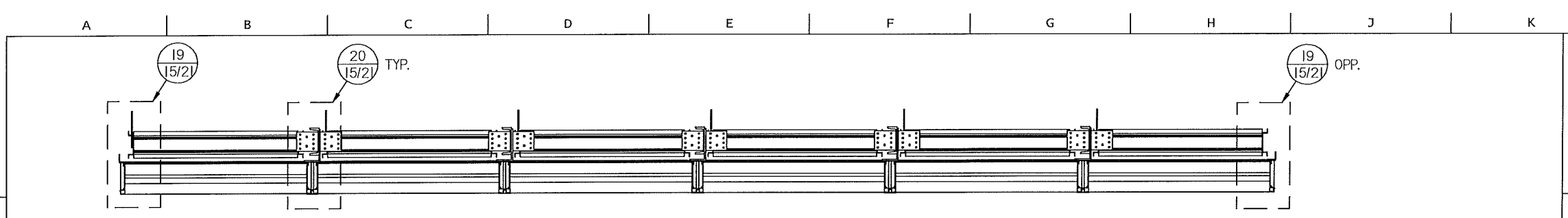
VERTICAL CROSS SECTION

ELEVATION

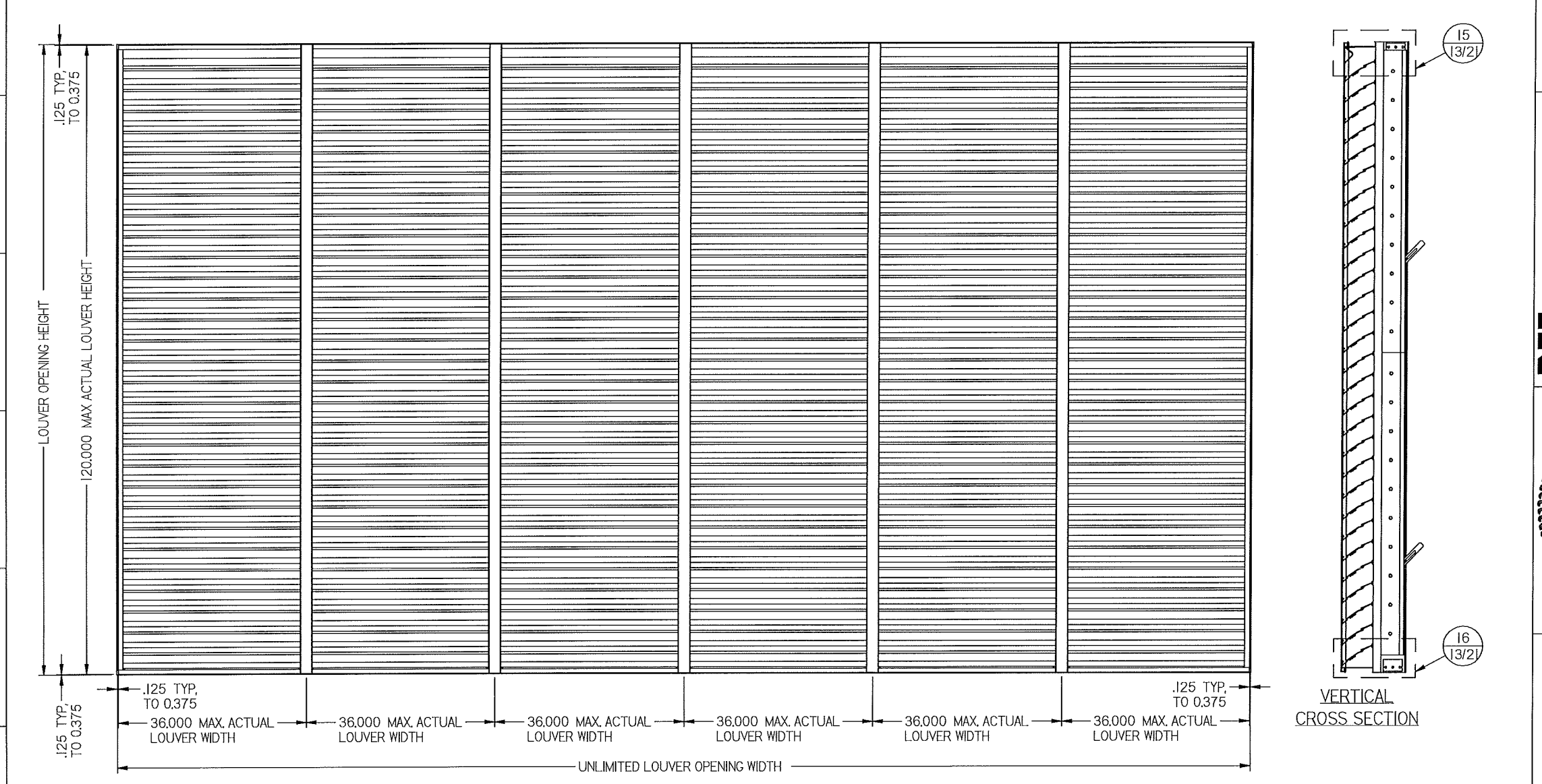
N:\Drawing\LOUVERS\AMCA\1606DHPM\1606DHPM 216 X 120 FL Sleeve_TDI.dft

DWN BY: fcortinas	CHK BY: MASTOURIAN	SCALE: NTS
DATE: 11/2/2020		
TITLE: 1606DHPM / DAMPER FLANGE FRAME SLEEVE MOUNT		SHEET: 4 OF 21
DWG. NO. 1606DHPM		REV. B





HORIZONTAL CROSS SECTION

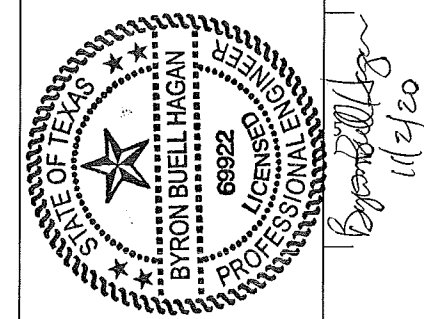


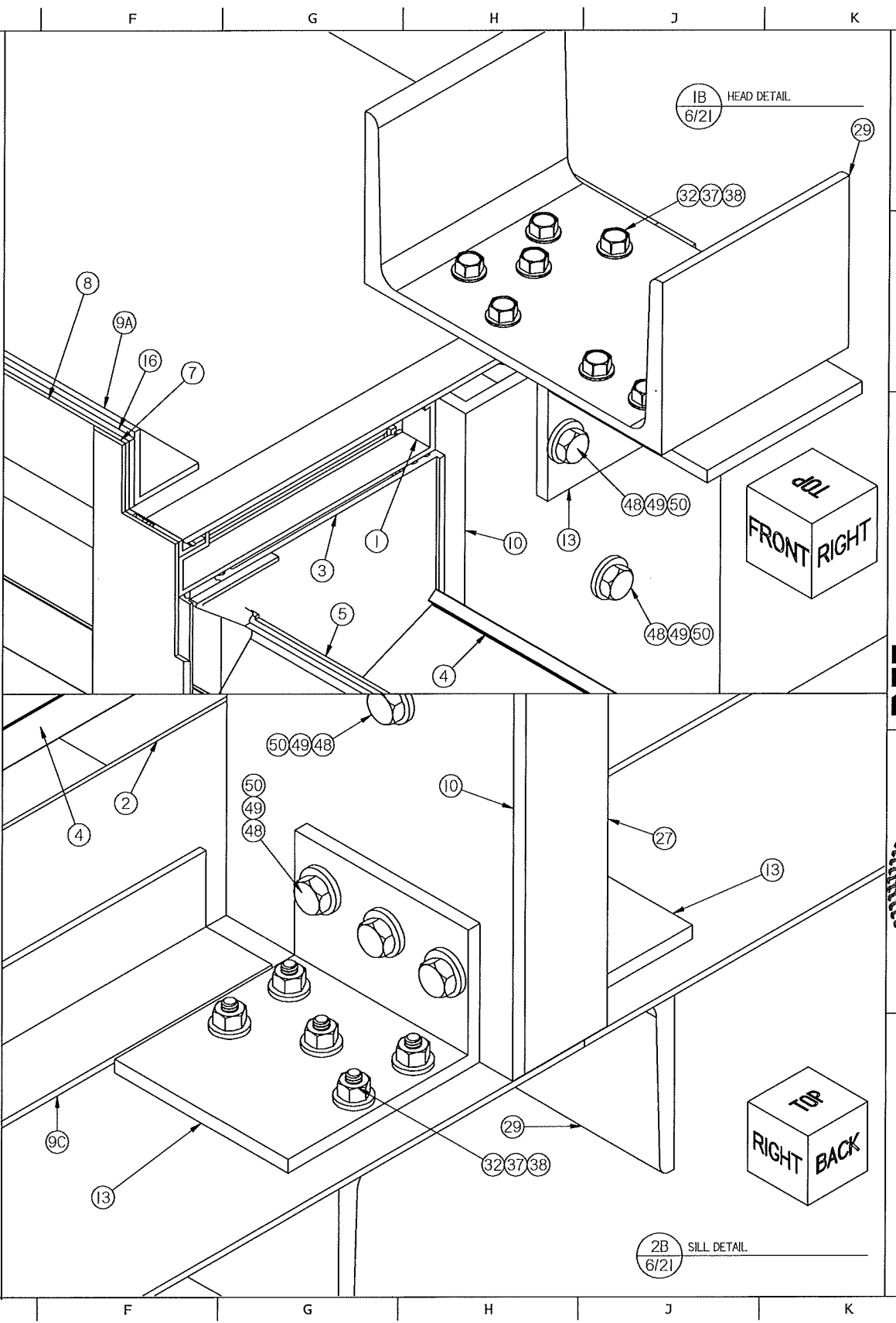
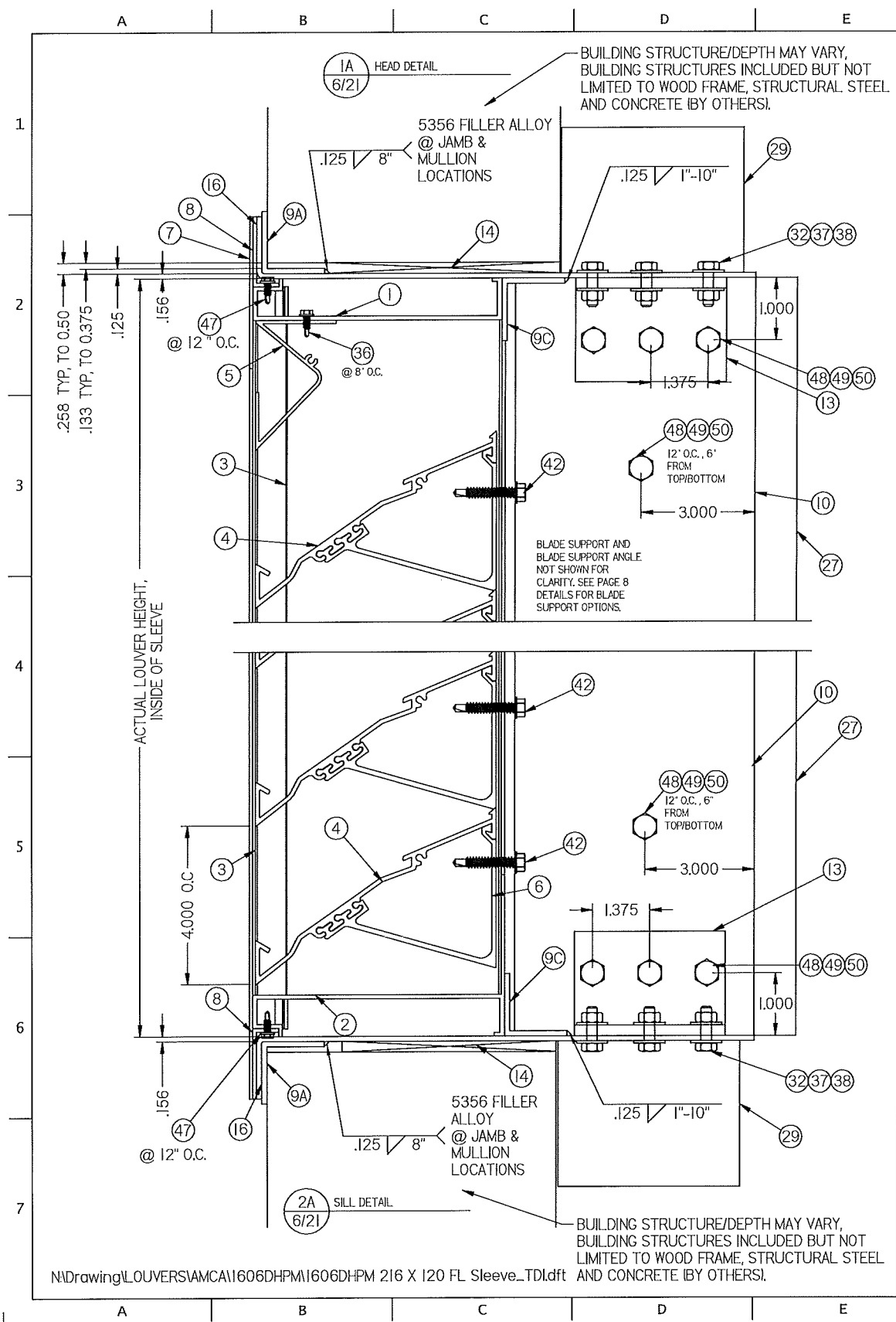
ELEVATION

VERTICAL CROSS SECTION

N:\Drawing\LOUVERS\AMCA\1606DHPM\1606DHPM 216 X 120 FL Sleeve_TDI.dft

 4714 Winfield Road Houston, TX 77039 www.nailor.com TEL: 281-590-1172 FAX: 281-590-3086	DWN BY: fcoartinas DATE: 11/2/2020	CHK BY: MAstourian SCALE: NTS
	TITLE: 1606DHPM / DAMPER CONTINUOUS ANGLE MOUNT	
SHEET: 5 OF 21		REV B
DWG. NO. 1606DHPM		

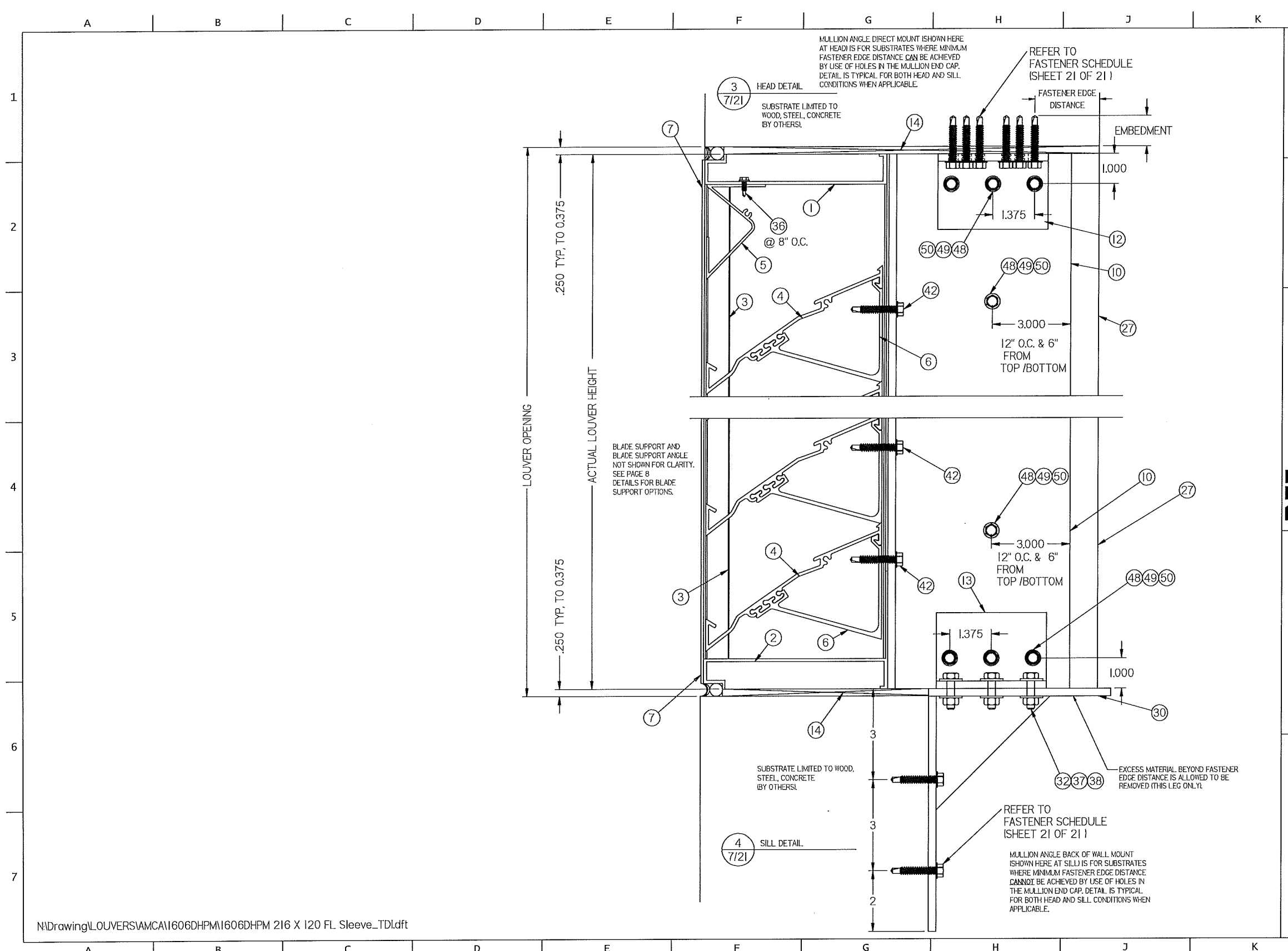




N:\Drawing\Louvers\AMCA\1606DHPM\1606DHPM 216 X 120 FL Sleeve_TDI.dft

DWN BY: fcortinas	CHK BY: Mastourian	SCALE: NTS	SHEET: 6 OF 21	REV B
DATE: 11/2/2020				
Nailor Industries Inc. 4714 Winfield Road Houston, TX 77039 www.nailor.com TEL: 281-590-1172 FAX: 281-590-3086		TITLE: 1606DHPM LOUVER FLANGE FRAME SLEEVE MOUNT HEAD & SILL DETAIL		

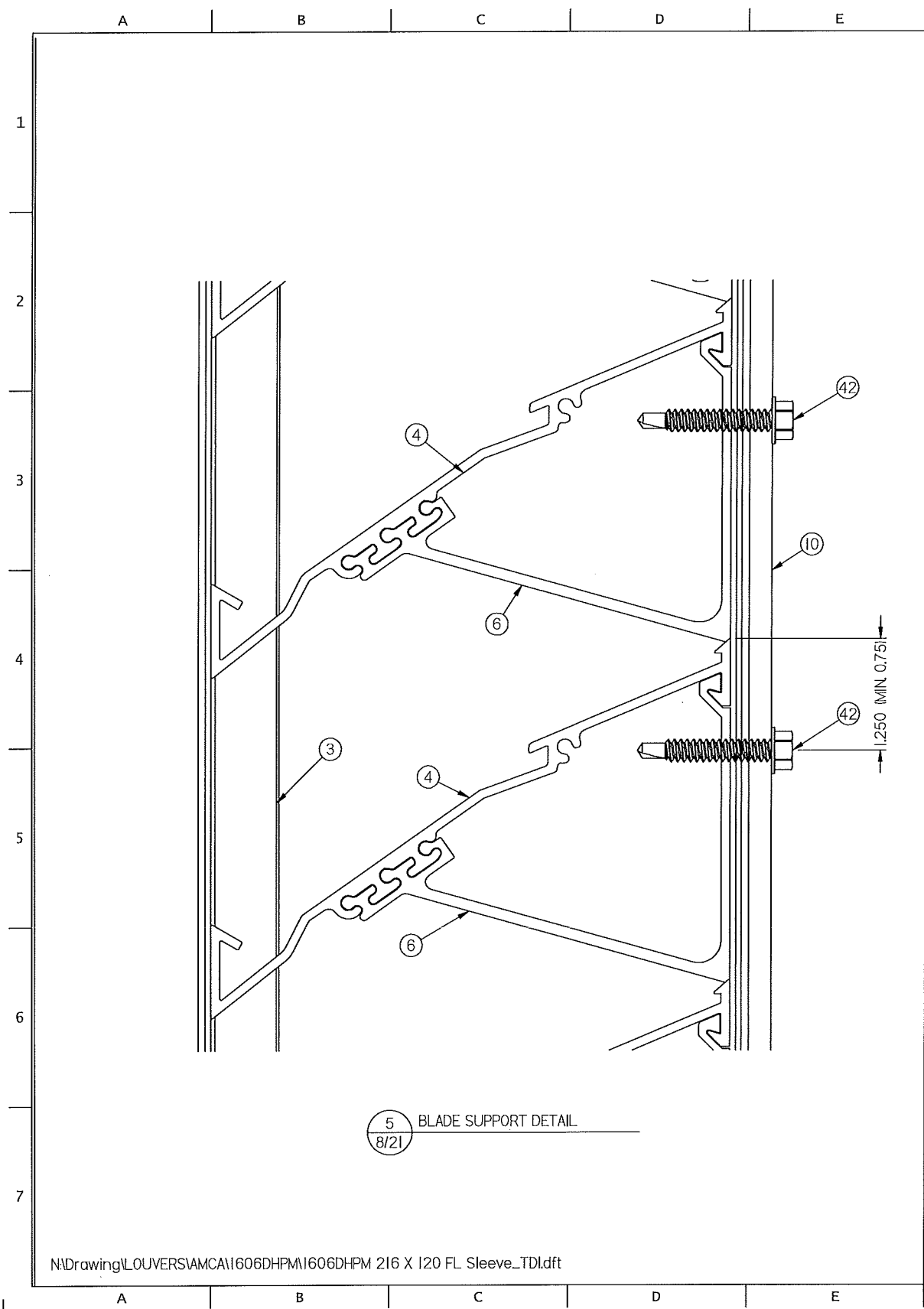
Byron Buell Hagan
11/2/20



N:\Drawing\LOUVERS\AMCA\1606DHPM\1606DHPM 216 X 120 FL Sleeve_TDI.dft

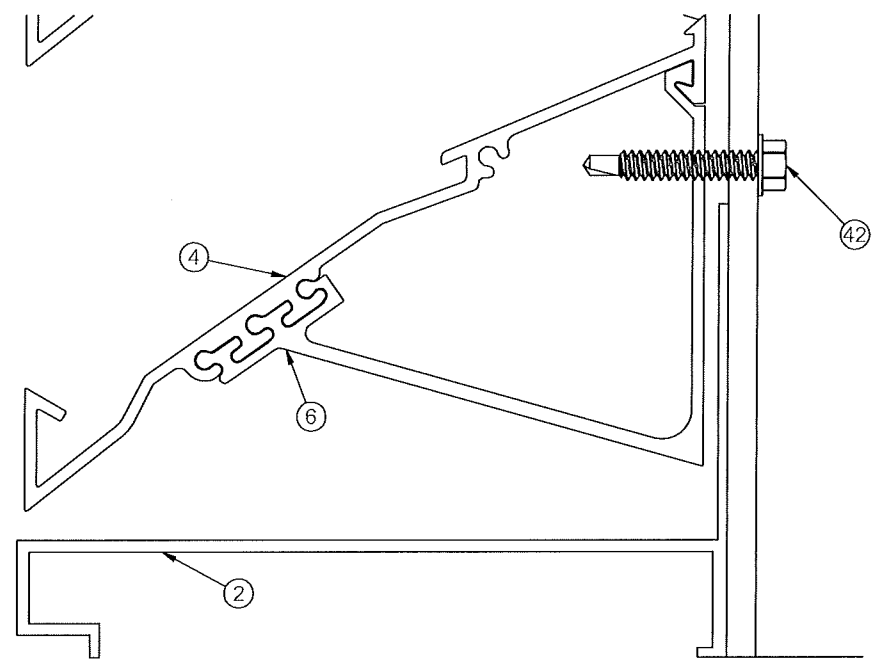
DWN BY: fcortinas DATE: 11/2/2020	CHK BY: Mastourian SCALE: NTS	SHEET: 7 OF 21 REV B
	DWG. NO. 1606DHPM	
TITLE: 1606DHPM LOUVER MULLION ANGLE MOUNT HEAD & SILL DETAILS		
Nalor Industries Inc. 4714 Winfield Road Houston, TX 77039 www.nalor.com TEL: 281-590-1172 FAX: 281-590-3086		
REV A: ADDED 3.000 DIM (3H); (5H)		





N:\Drawing\LOUVERS\AMCA\1606DHPM\1606DHPM 216 X 120 FL Sleeve_TDL.dft

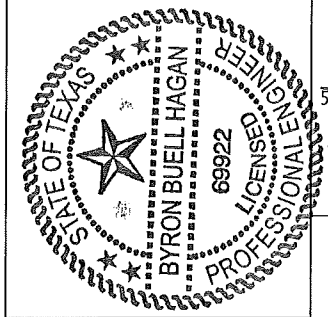
NOTE: THE BLADE SUPPORT ANGLE (ITEM 10 IS NOT SHOWN IN THE DETAILS IN ORDER TO IMPROVE CLARITY. THE BLADE SUPPORT ANGLE IS ATTACHED TO THE BLADE SUPPORT BRACE (ITEM 6). BLADE SUPPORT BRACKET 6 (SHOWN) IS ANY OF THE DRAWINGS FOR DETAIL 6.

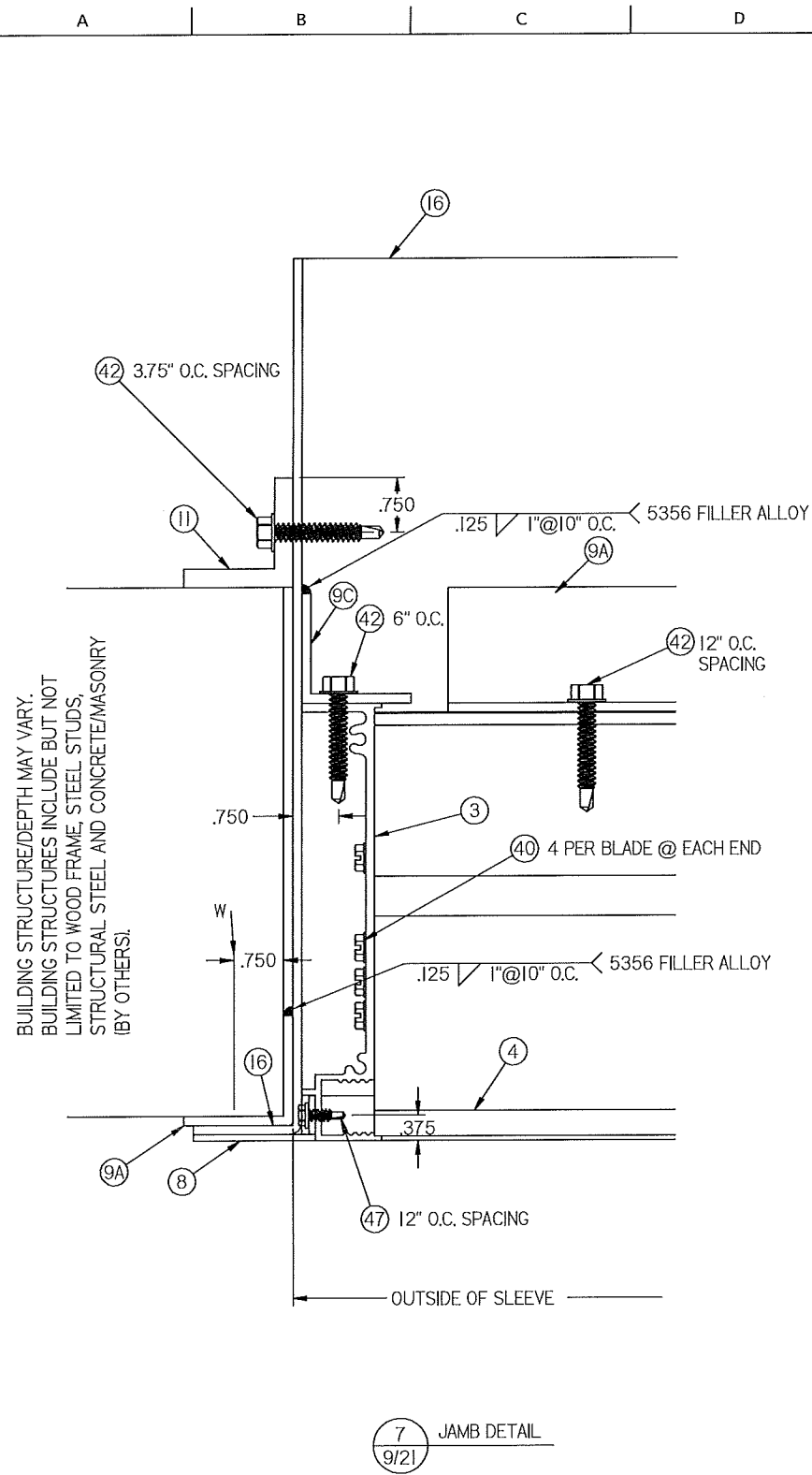


DWN BY: fcortinas	CHK BY: Mastourian
DATE: 11/2/2020	SCALE: NTS
SHEET: 8 OF 21	
DWG. NO. 1606DHPM	REV B

Nailor Industries Inc.
4714 Winfield Road Houston, TX 77039
www.nailor.com TEL: 281-590-1172 FAX: 281-590-3086

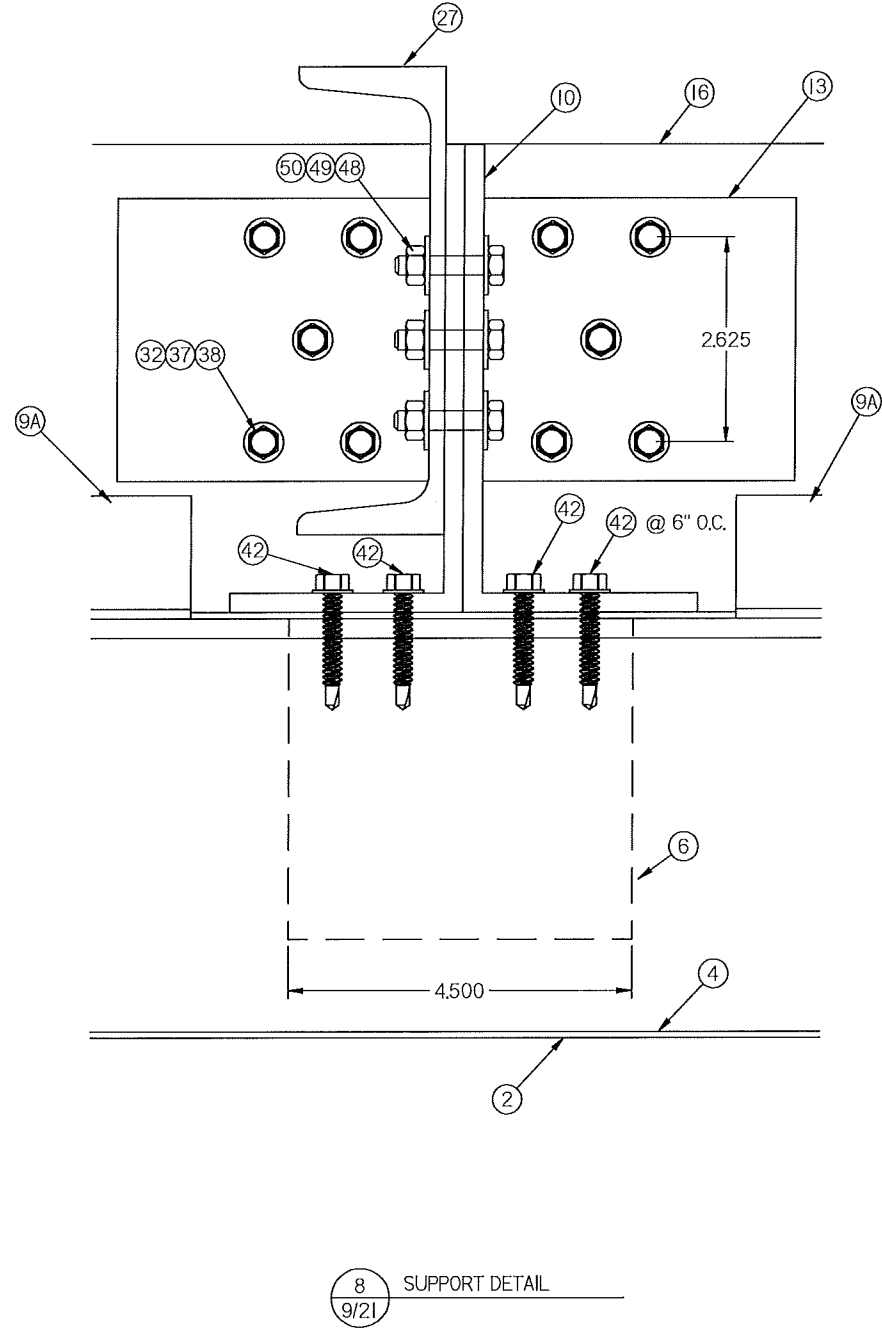
TITLE:
**1606DHPM LOUVER
BLADE SUPPORT DETAIL**





BUILDING STRUCTURE/DEPTH MAY VARY.
 BUILDING STRUCTURES INCLUDE BUT NOT
 LIMITED TO WOOD FRAME, STEEL STUDS,
 STRUCTURAL STEEL AND CONCRETE/MASONRY
 (BY OTHERS).

7 JAMB DETAIL
 9/21



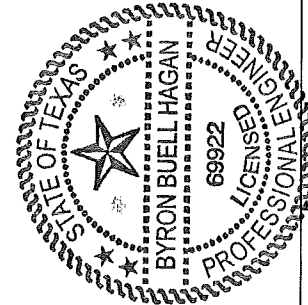
8 SUPPORT DETAIL
 9/21

N:\Drawing\LOUVERS\AMCA\1606DHPM\1606DHPM 216 X 120 FL Sleeve.TD\dft

DWN BY: fcortinas	CHK BY: Mastourian
DATE: 11/2/2020	SCALE: NTS
SHEET: 9 OF 21	
DWG. NO.	REV
1606DHPM	B

Nailor Industries Inc.
 4714 Winfield Road Houston, TX 77039
 www.nailor.com TEL: 281-590-1172 FAX: 281-590-3086

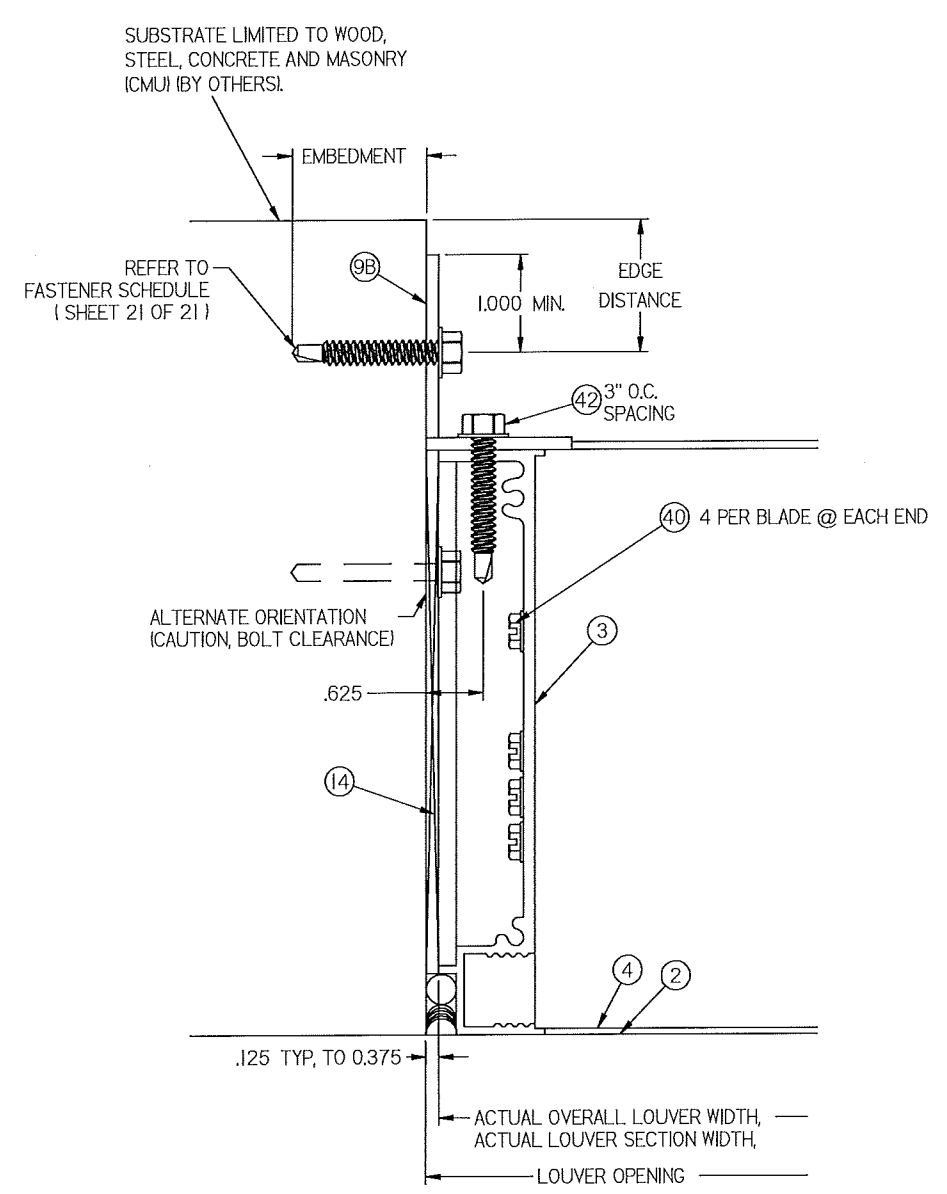
TITLE:
 1606DHPM LOUVER
 FLANGE FRAME SLEEVE MOUNT
 JAMB DETAILS



Byron Buell Hagan
 11/2/20

A B C D E F G H J K L

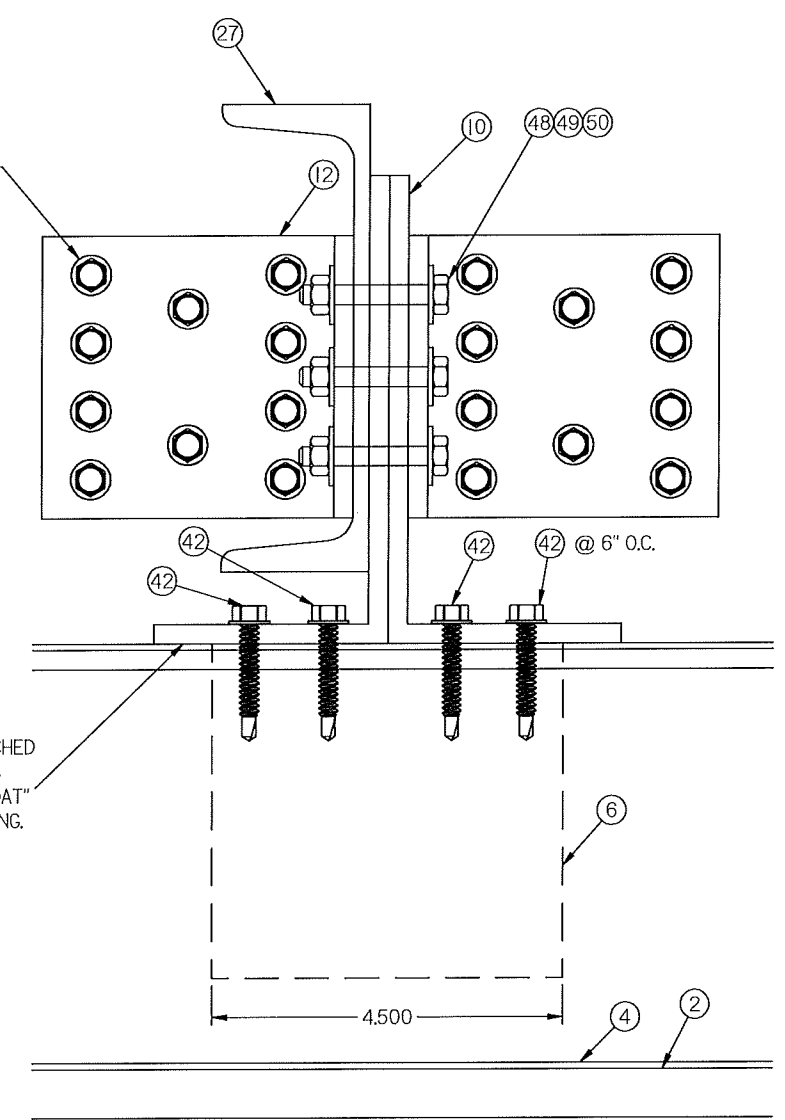
1
2
3
4
5
6
7



9 JAMB DETAIL
10/21

REFER TO FASTENER SCHEDULE (SHEET 21 OF 21)

SUPPORT NOT ATTACHED AT HEAD AND SILL AS TO ALLOW IT TO "FLOAT" DURING BLADE LOADING.

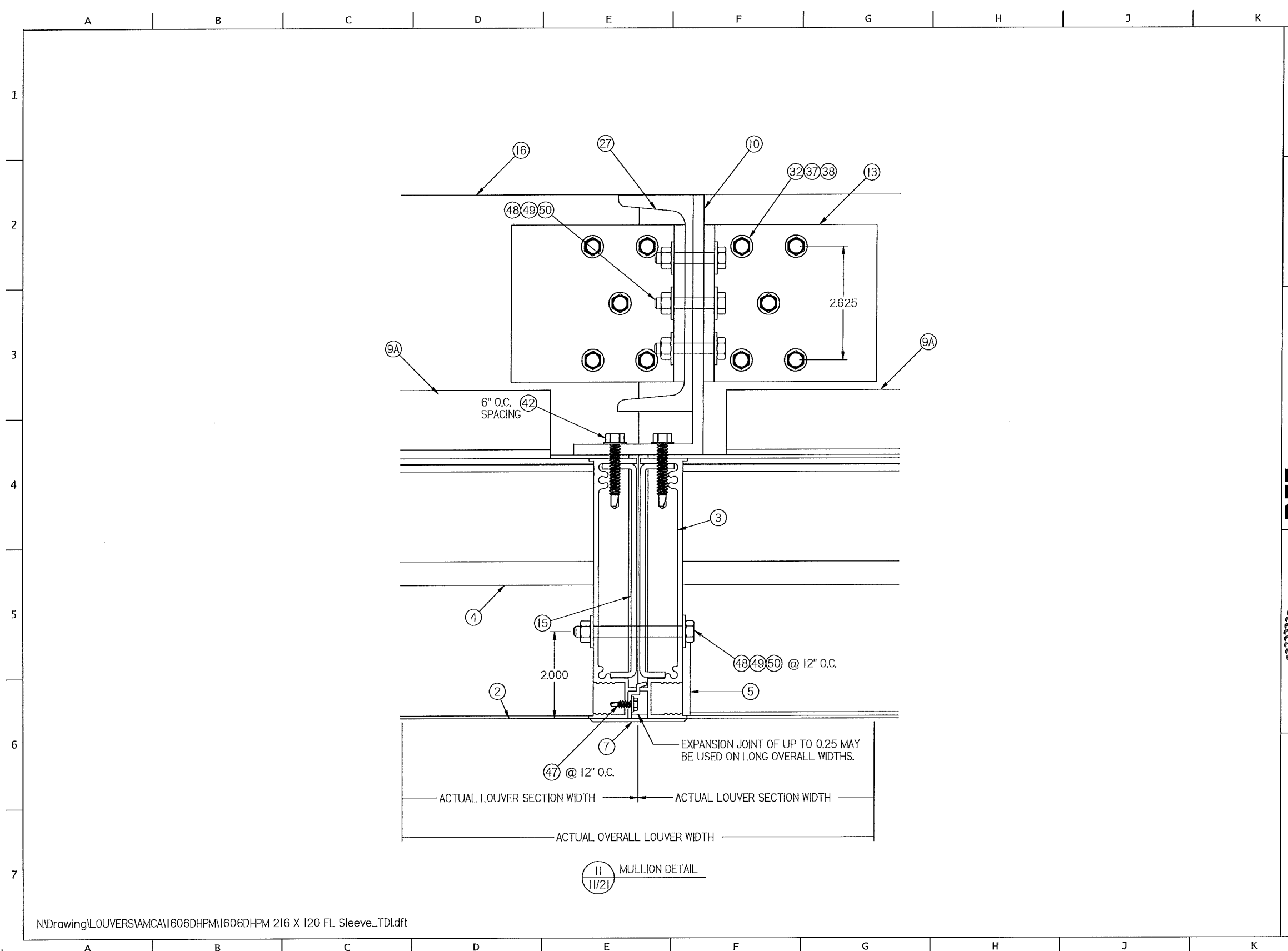


10 SUPPORT DETAIL
10/21


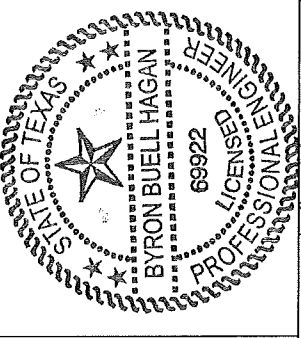
DWN BY: fcoortinas	CHK BY: Mastourian	SHEET: 10 OF 21
DATE: 11/2/2020	SCALE: NTS	
<p>Nailor Industries Inc. 4714 Winfield Road Houston, TX 77039 www.nailor.com TEL: 281-590-1172 FAX: 281-590-3086</p>		DWG. NO. 1606DHPM
<p>TITLE: 1606DHPM LOUVER COUNTINOUS ANGLE MOUNT JAMB DETAIL</p>		REV B

Byron Buell Hagan
11/2/20

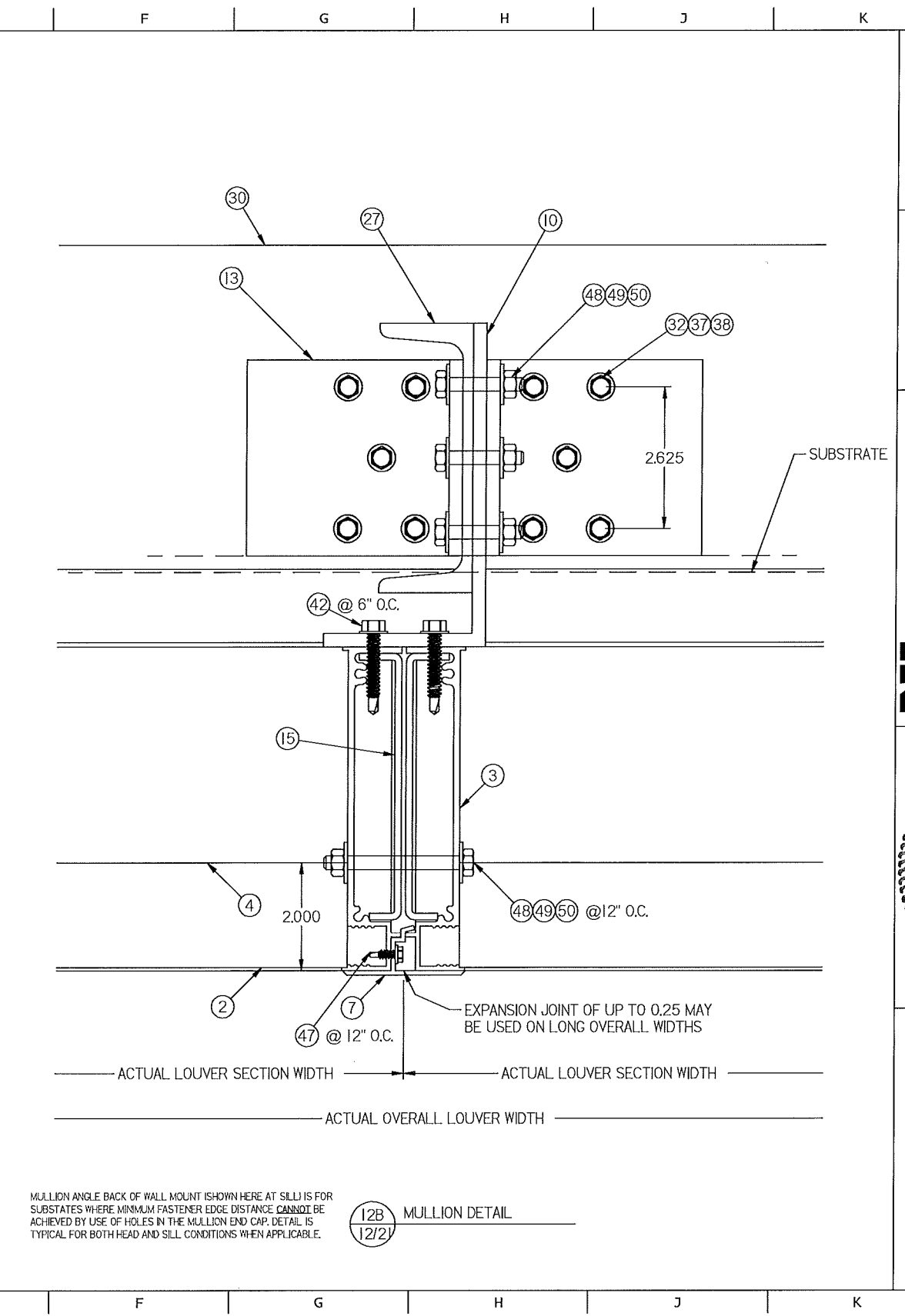
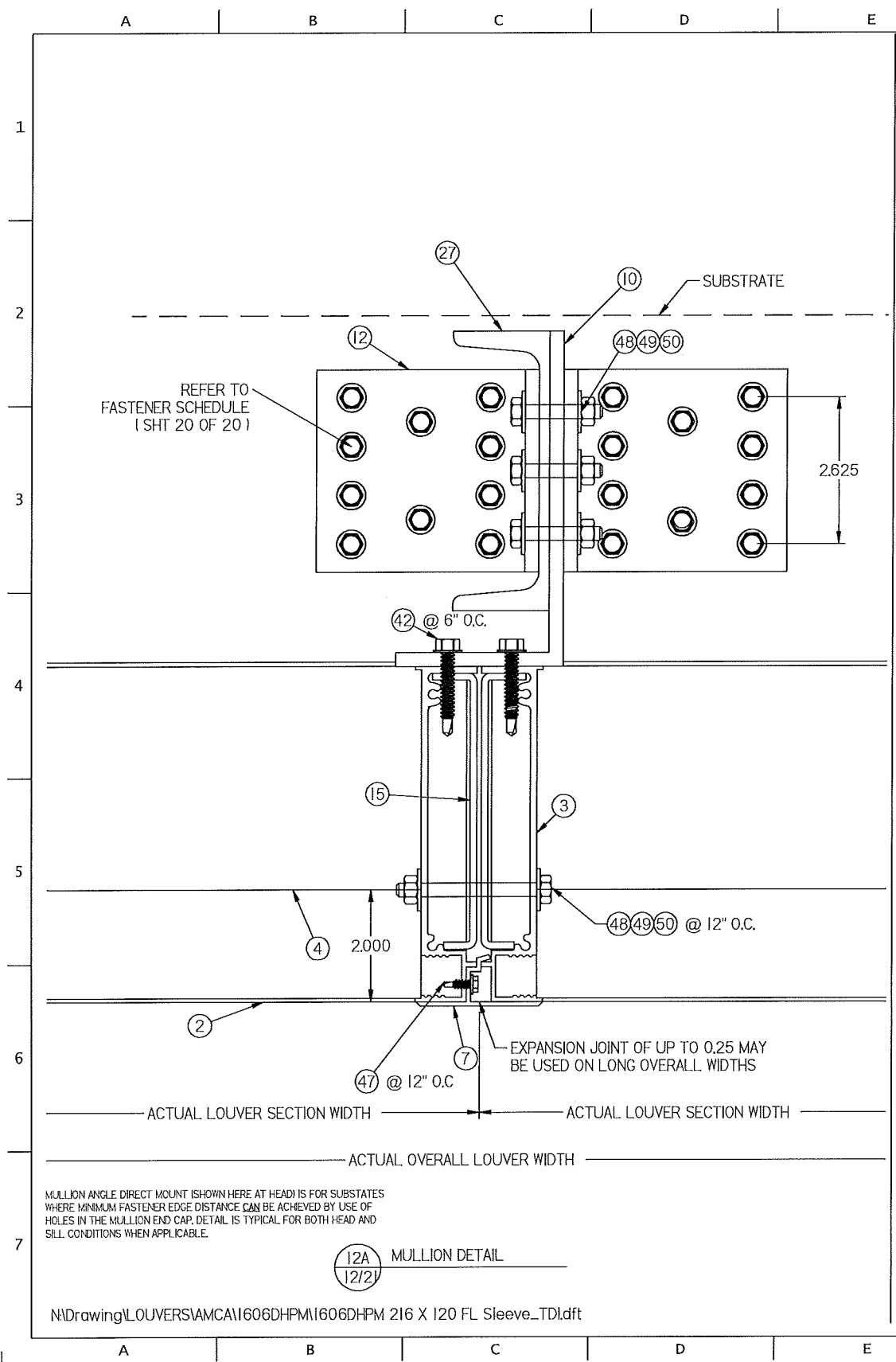
A B C D E F G H J K L



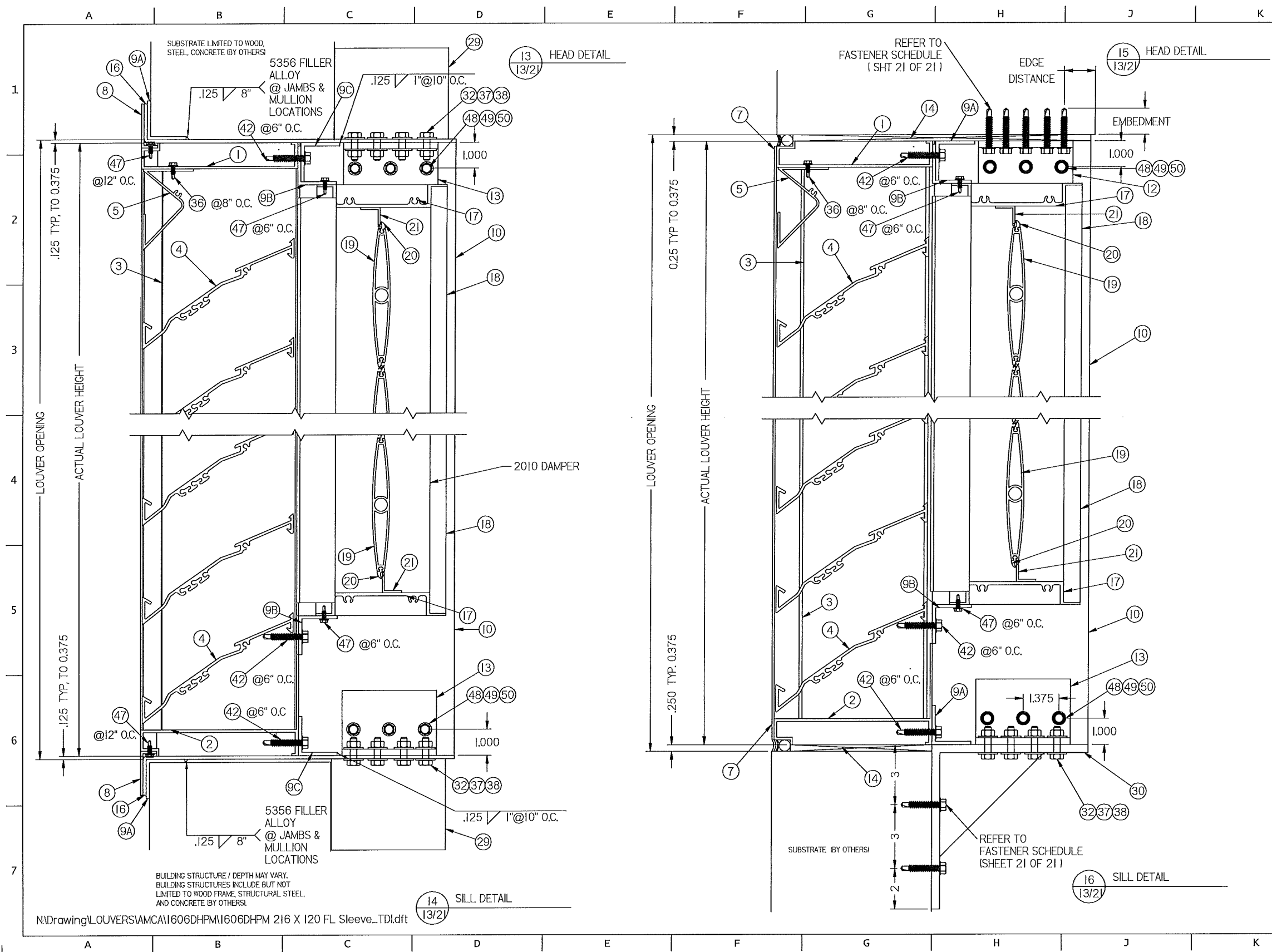
N:\Drawing\LOUVERS\AMCA\1606DHPM\1606DHPM 216 X 120 FL Sleeve_TDI.dft

 Nailor Industries Inc. 4714 Winfield Road Houston, TX 77039 www.nailor.com TEL: 281-590-1172 FAX: 281-590-3086	DWN BY: fcortinas DATE: 11/2/2020	CHK BY: MAstourian SCALE: NTS
	SHEET: 11 OF 21 DWG. NO. 1606DHPM	
TITLE: 1606DHPM LOUVER FLANGE FRAME SLEEVE MOUNT MULLION DETAIL		
		
REV A: ADDED 2.000 LOCATING DIM (6E)		

Byron Buell Hagan
11/2/20

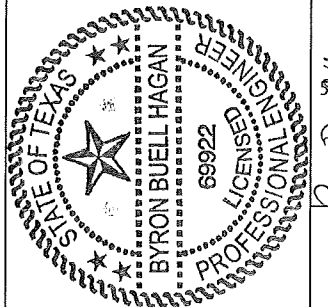


DWN BY: f cortinas	CHK BY: Mastourian	SCALE: NTS
DATE: 11/2/2020	SHEET: 12 OF 21	
Nalor Industries Inc. 4714 Winfield Road Houston, TX 77039 www.nalor.com TEL: 281-590-1172 FAX: 281-590-3086		DWG. NO. 1606DHPM
TITLE: 1606DHPM LOUVER COUNTINOUS ANGLE MOUNT MULLION DETAIL		
REV A: ADDED 2,000 LOCATING DIM (5C) (5G)		

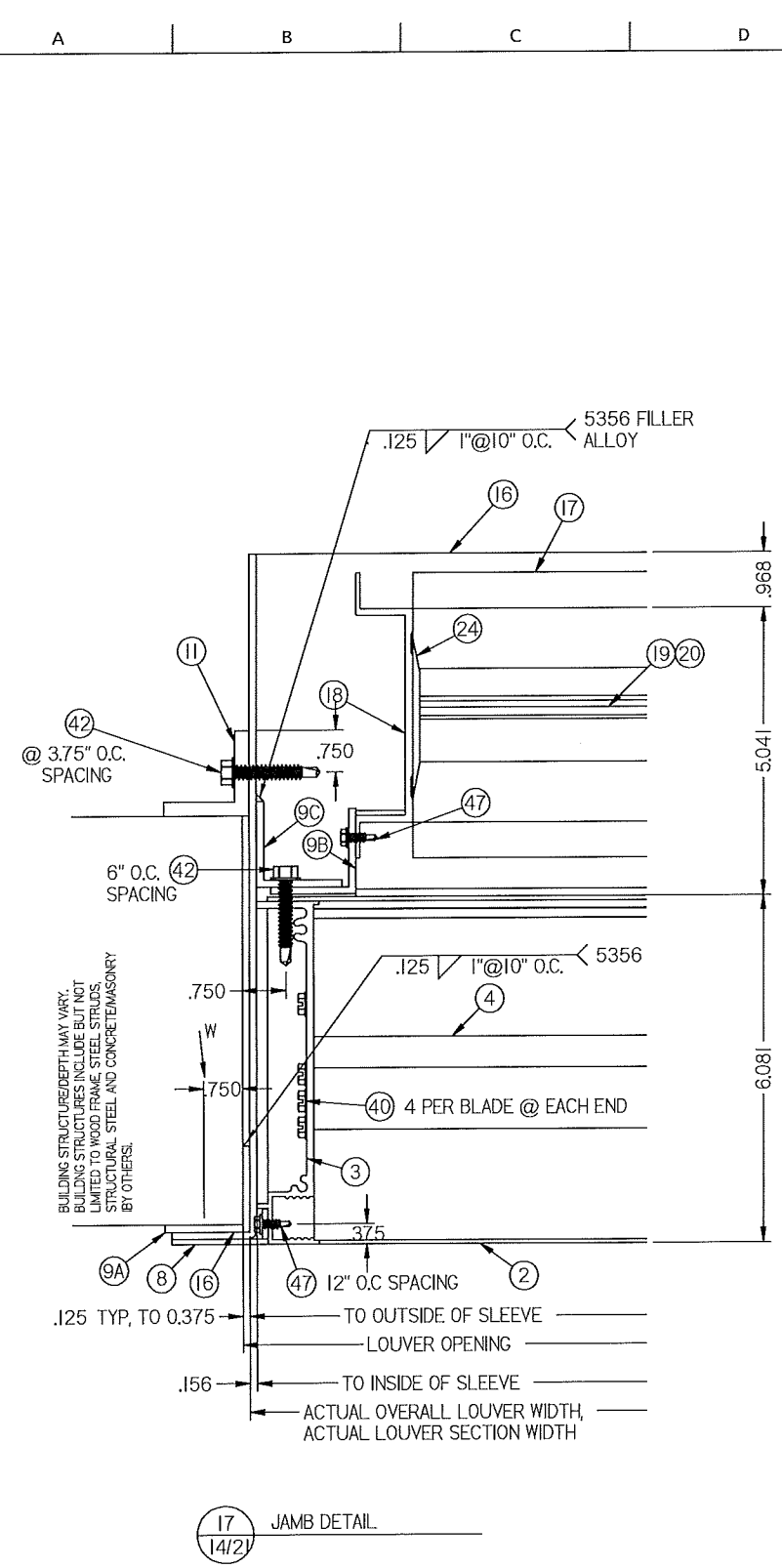


N:\Drawing\LOUVERS\AMCA\1606DHPM\1606DHPM 216 X 120 FL Sleeve_TDI.dft

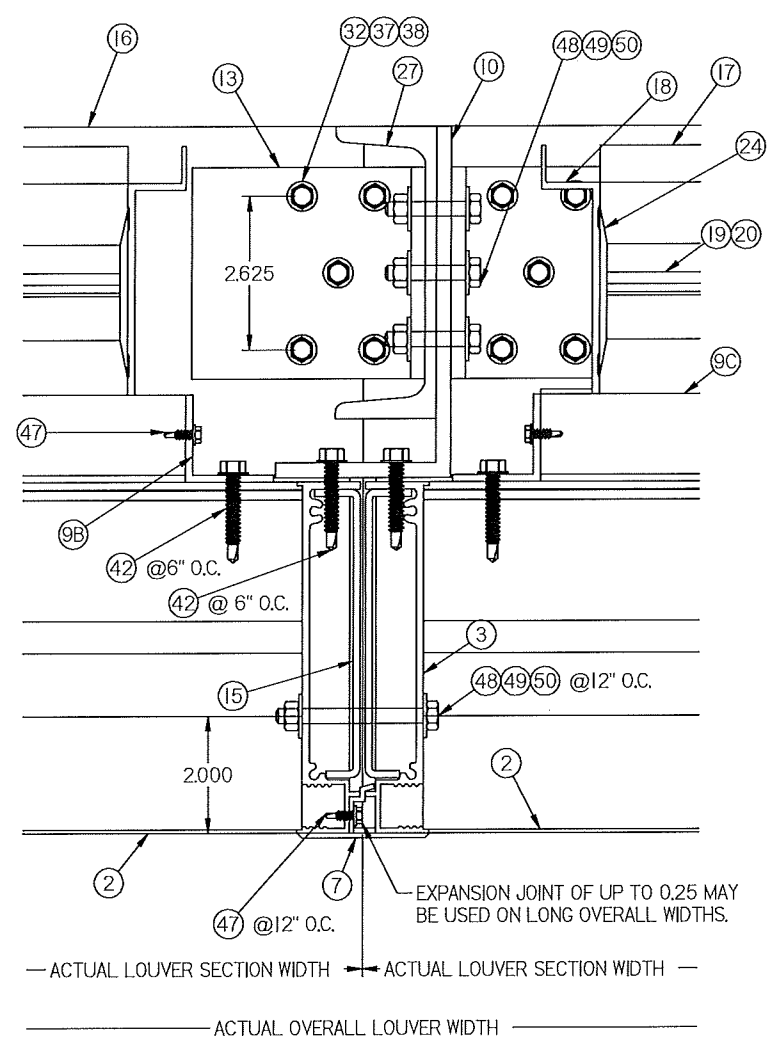
 4714 Winfield Road Houston, TX 77039 www.nailor.com TEL: 281-590-1172 FAX: 281-590-3086	DWN BY: fcortinas DATE: 11/2/2020	CHK BY: Mastourian SCALE: NTS
	TITLE: 1606DHPM LOUVER / DAMPER FLANGE FRAME W/SLEEVE MULLION ANGLE MOUNT HEAD & SILL DETAIL	
SHEET: 13 OF 21		
DWG. NO. 1606DHPM		REV B



Byron Buell Hagan
11/2/20


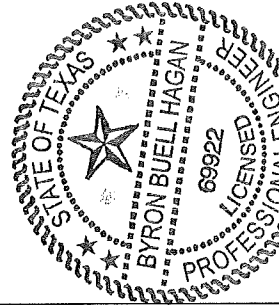


17 JAMB DETAIL
14/21



18 MULLION DETAIL
14/21

N:\Drawing\LOUVERS\AMCA\1606DHPM\1606DHPM 216 X 120 FL Sleeve_TDI.dft

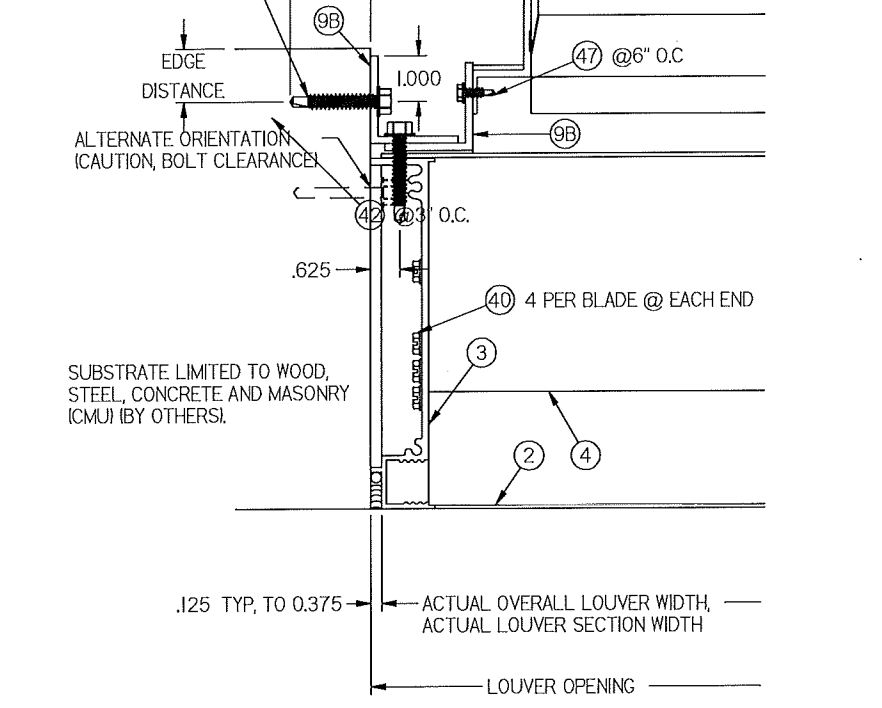
DWN BY: fcoortinas	CHK BY: Mastourian	SHEET: 14 OF 21	REV B
DATE: 11/2/2020	SCALE: NTS		
 Nailor Industries Inc. 4714 Winfield Road Houston, TX 77039 www.nailor.com TEL: 281-590-1172 FAX: 281-590-3086		DWG. NO. 1606DHPM	
TITLE: 1606DHPM LOUVER / DAMPER FLANGE FRAME SLEEVE MOUNT JAMB AND MULLION DETAIL			
			
REV A: ADDED 2,000 LOCATING DIM (5G)			

Byron Bujell Hagan
11/2/20

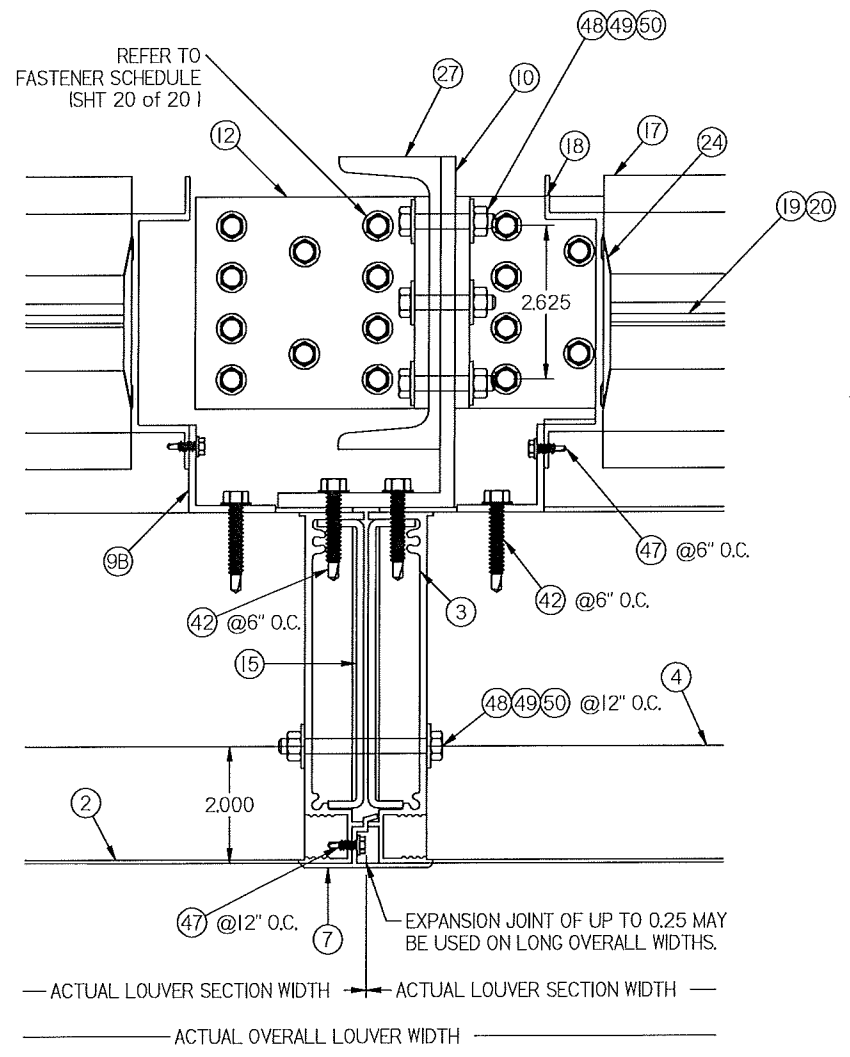
A B C D E F G H J K L

1
2
3
4
5
6
7

REFER TO FASTENER SCHEDULE (SHEET 21 OF 21)




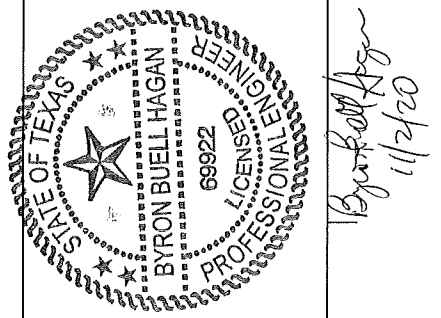
19 JAMB DETAIL
15/21

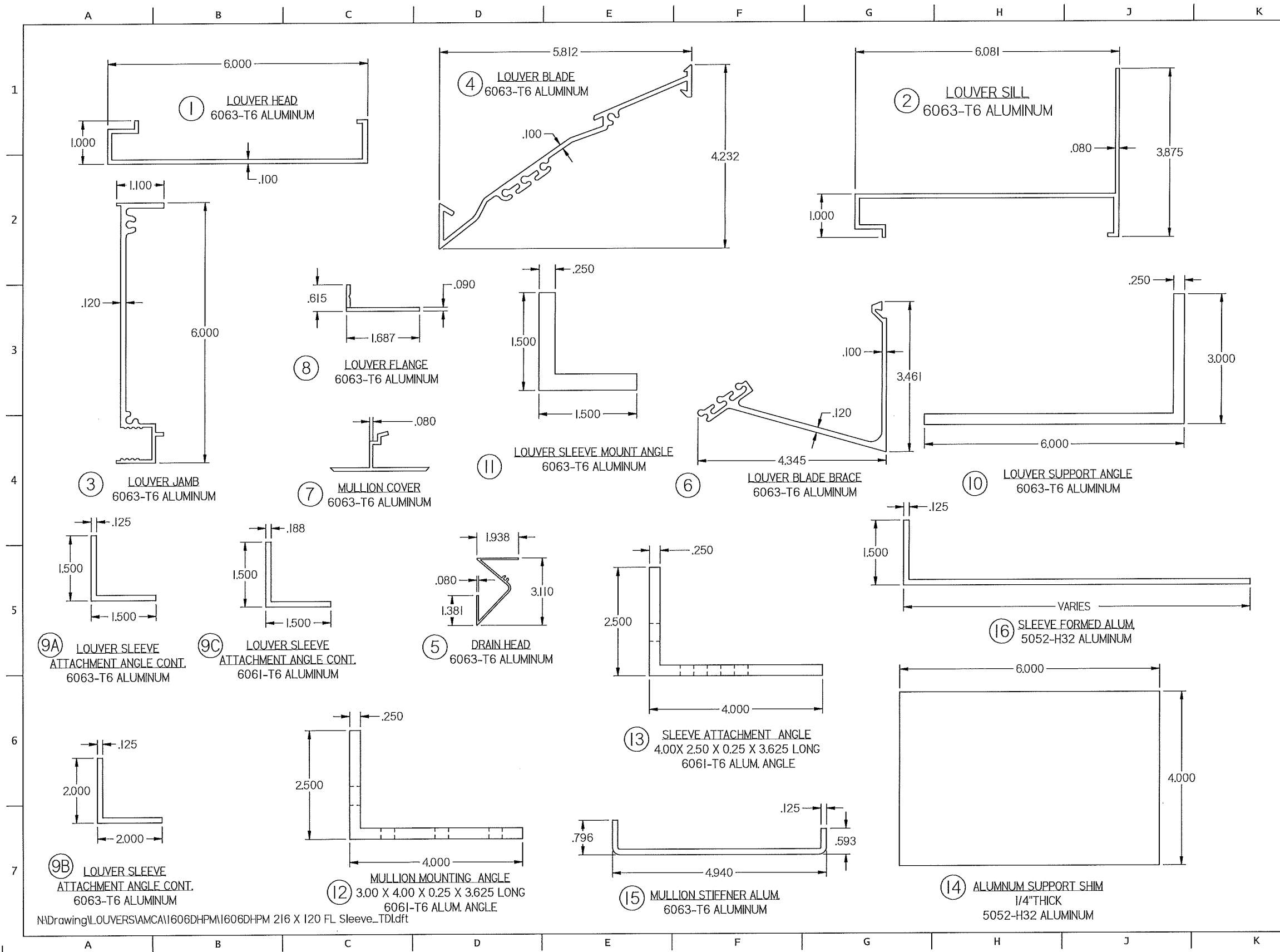


20 MULLION DETAIL
15/21

N:\Drawing\LOUVERS\AMCA\1606DHPM\1606DHPM 216 X 120 FL Sleeve_TDL.dft

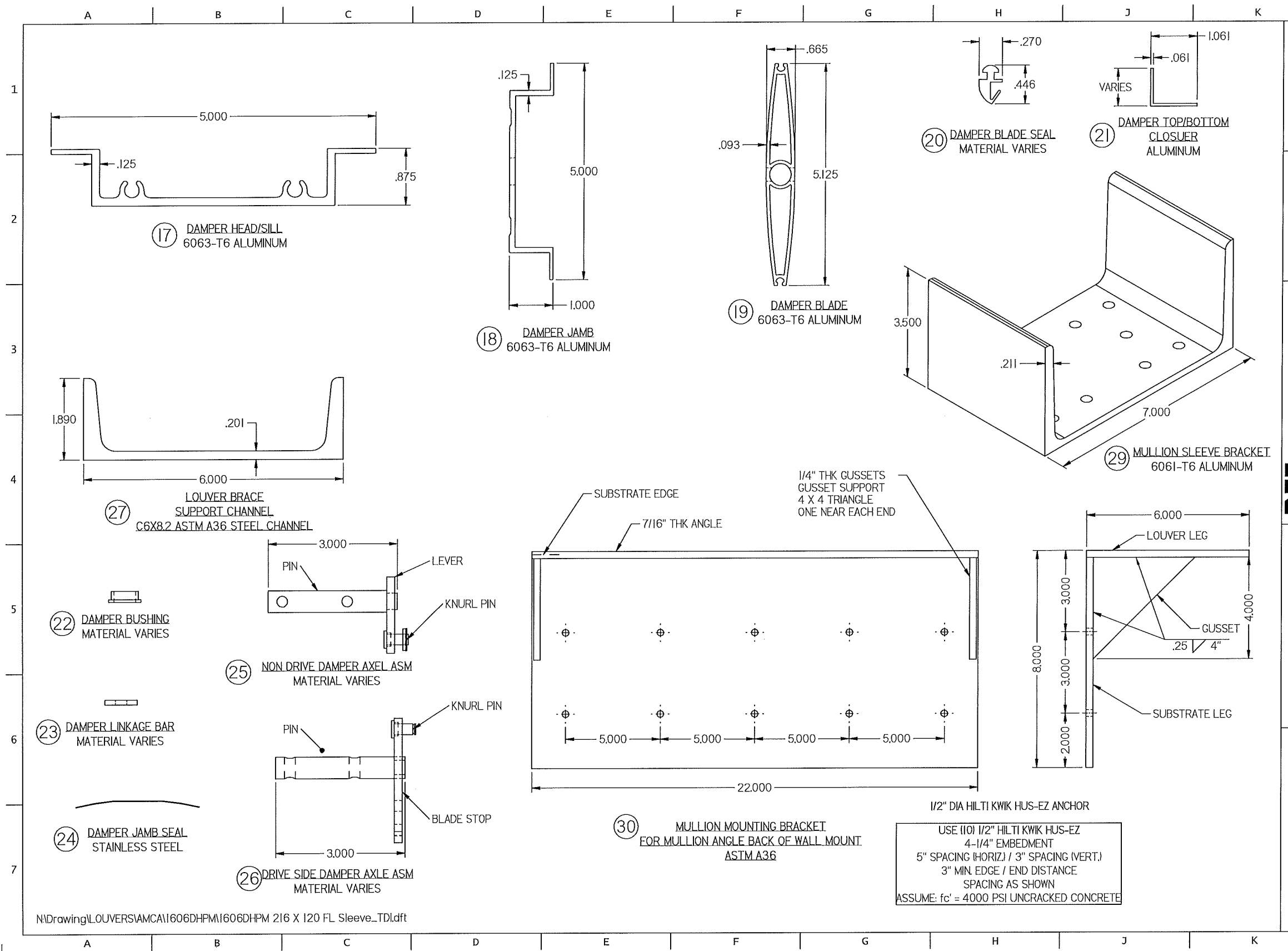
DWN BY: fcoartinas	CHK BY: Mastourian	SCALE: NTS
DATE: 11/21/2020		
 Nailor Industries Inc. 4714 Winfield Road Houston, TX 77039 www.nailor.com TEL: 281-590-1172 FAX: 281-590-3086		SHEET: 15 OF 21 DWG. NO. 1606DHPM
TITLE: 1606DHPM LOUVER / DAMPER CONTINUOUS ANGLE MOUNT JAMB AND MULLION DETAIL		
REV A: ADDED 2.000 LOCATING DIM (5G)		REV B





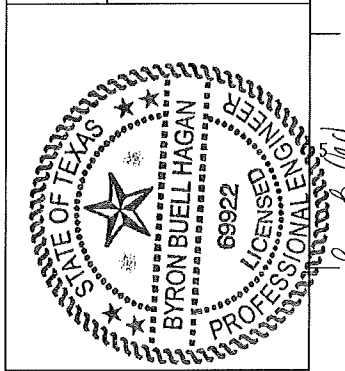
N:\Drawing\LOUVERS\AMCA\1606DHPM\1606DHPM 216 X 120 FL Sleeve_TDI.dft

CHK BY: MAstourian	SCALE: NTS	SHEET: 16 OF 21	REV B
DWN BY: fcoirtinas	DATE: 11/2/2020		
 4714 Winfield Road Houston, TX 77039 www.nailor.com TEL: 281-590-1172 FAX: 281-590-3086		TITLE: 1606DHPM LOUVER, W/ AND W/O DAMPER SLEEVE/CONTINUOUS MOUNT PART PROFILES	
		1606DHPM 11/2/20	
REV A: 2.500 WAS 3.000 (5E), (6C)			



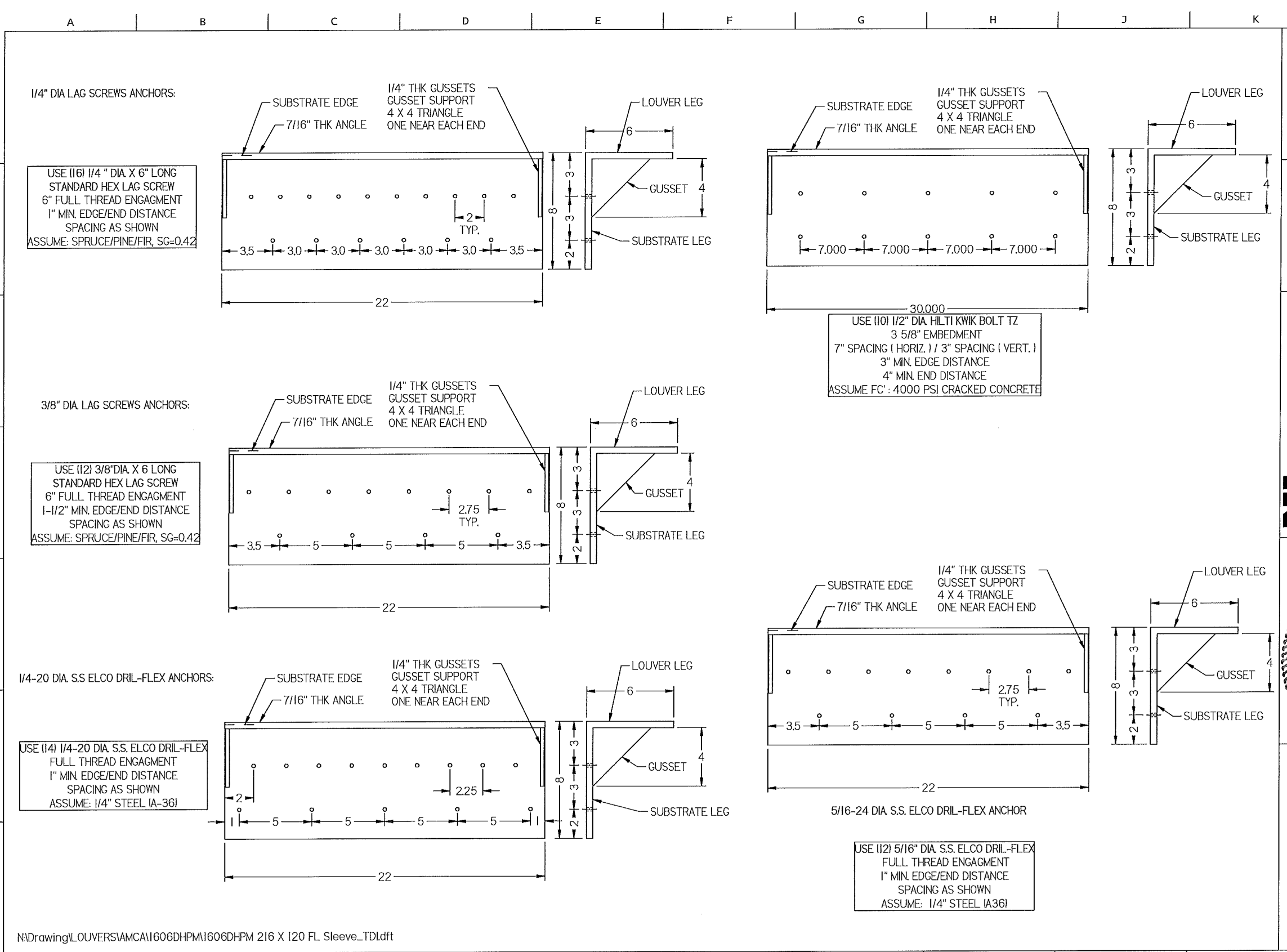
N:\Drawing\L\OUVERSVAMCA\1606DHPM\1606DHPM 216 X 120 FL Sleeve_TDI.dft

CHK BY: MASTOURIAN	SCALE: NTS	SHEET: 17 OF 21	REV	B
DWN BY: fcortinas	DATE: 11/2/2020		DWG. NO.	1606DHPM
Nailor Industries Inc. 4714 Winfield Road Houston, TX 77039 www.nailor.com TEL: 281-590-1172 FAX 281-590-3086		TITLE: 1606DHPM LOUVER W/ AND W/O DAMPER SLEEVE/CONTINUOUS MOUNT PART PROFILES		



Byron Buell Hagan
11/2/20

USE (10) 1/2" HILTI KWIK HUS-EZ
 4-1/4" EMBEDMENT
 5" SPACING (HORIZ.) / 3" SPACING (VERT.)
 3" MIN. EDGE / END DISTANCE
 SPACING AS SHOWN
 ASSUME: $f_c' = 4000$ PSI UNCRACKED CONCRETE



1/4" DIA LAG SCREWS ANCHORS:
 USE (16) 1/4" DIA X 6" LONG STANDARD HEX LAG SCREW 6" FULL THREAD ENGAGEMENT 1" MIN. EDGE/END DISTANCE SPACING AS SHOWN ASSUME: SPRUCE/PINE/FIR, SG=0.42

3/8" DIA. LAG SCREWS ANCHORS:
 USE (12) 3/8" DIA. X 6" LONG STANDARD HEX LAG SCREW 6" FULL THREAD ENGAGEMENT 1-1/2" MIN. EDGE/END DISTANCE SPACING AS SHOWN ASSUME: SPRUCE/PINE/FIR, SG=0.42

1/4-20 DIA. S.S. ELCO DRIL-FLEX ANCHORS:
 USE (14) 1/4-20 DIA. S.S. ELCO DRIL-FLEX FULL THREAD ENGAGEMENT 1" MIN. EDGE/END DISTANCE SPACING AS SHOWN ASSUME: 1/4" STEEL (A-36)

USE (10) 1/2" DIA. HILTI KWIK BOLT TZ 3 5/8" EMBEDMENT 7" SPACING (HORIZ.) / 3" SPACING (VERT.) 3" MIN. EDGE DISTANCE 4" MIN. END DISTANCE ASSUME FC: 4000 PSI CRACKED CONCRETE

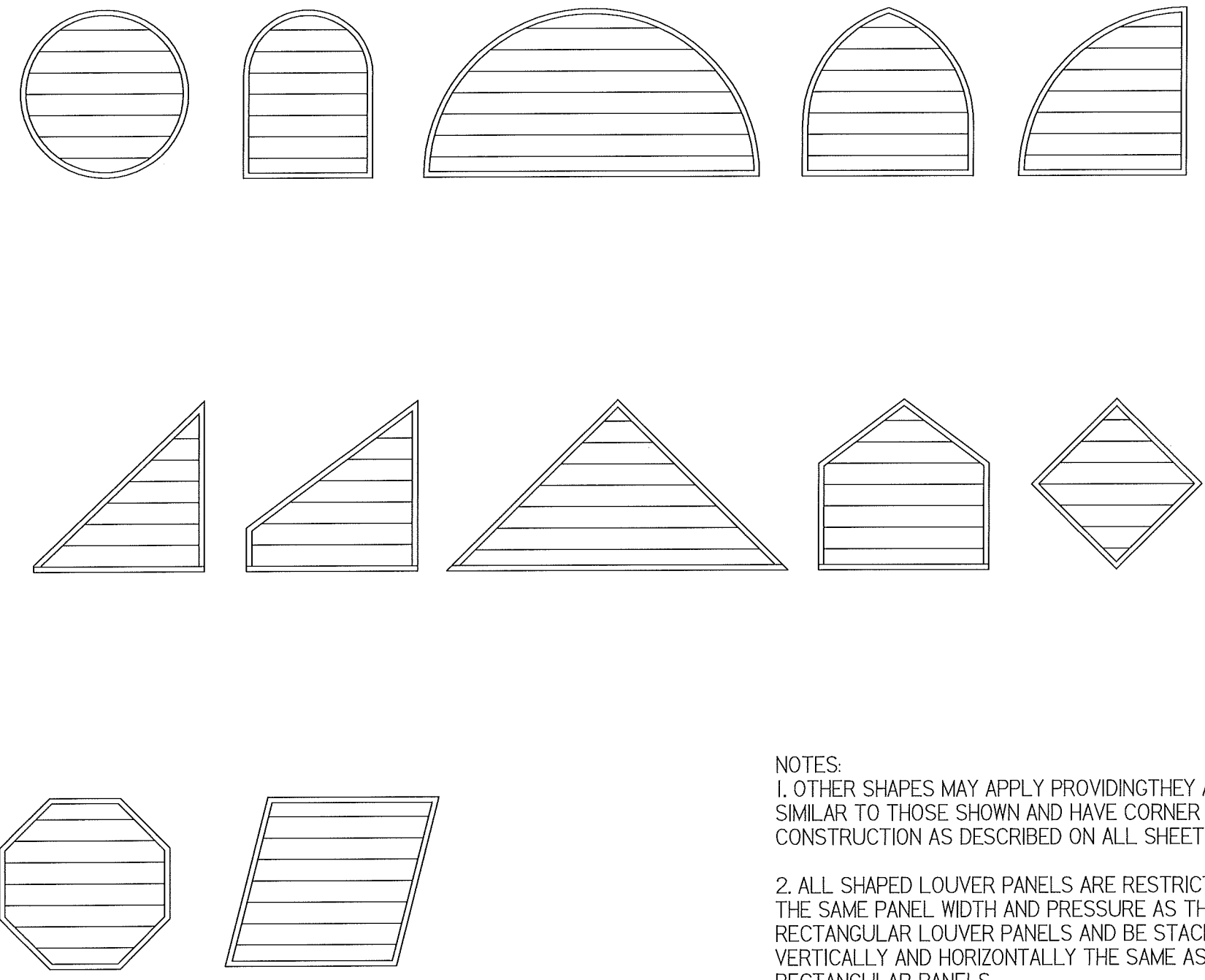
USE (12) 5/16" DIA. S.S. ELCO DRIL-FLEX FULL THREAD ENGAGEMENT 1" MIN. EDGE/END DISTANCE SPACING AS SHOWN ASSUME: 1/4" STEEL (A36)

CHK BY: Mastourian	SCALE: NTS	SHEET: 18 OF 21	REV B
DWN BY: fortinas	DATE: 11/2/2020		DWG. NO. 1606DHPM
4714 Winfield Road Houston, TX 77039 www.nailor.com TEL: 281-590-1172 FAX: 281-590-3086		TITLE: MULLION ANGLES BACK OF THE WALL MOUNT	

Byron Buell Hagan
 11/2/20

A B C D E F G H J K L

1
2
3
4
5
6
7



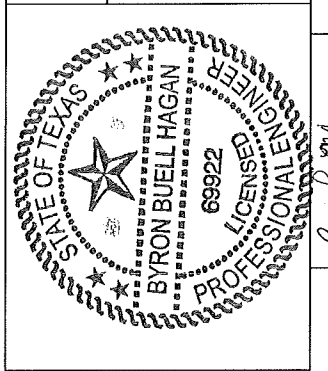
NOTES:
 1. OTHER SHAPES MAY APPLY PROVIDING THEY ARE SIMILAR TO THOSE SHOWN AND HAVE CORNER CONSTRUCTION AS DESCRIBED ON ALL SHEETS.
 2. ALL SHAPED LOUVER PANELS ARE RESTRICTED TO THE SAME PANEL WIDTH AND PRESSURE AS THE RECTANGULAR LOUVER PANELS AND BE STACKED VERTICALLY AND HORIZONTALLY THE SAME AS THE RECTANGULAR PANELS.
 3. WHEN SECTION EXCEED 36" IN LENGTH BLADE SUPPORT ANGLES AND BRACKETS ARE REQUIRED.

N:\Drawing\LOUVERS\AMCA\1606DHPM\1606DHPM 216 X 120 FL Sleeve_TDI.dft

A B C D E F G H J K L

DWN BY: fcortinas CHK BY: MStourian
 DATE: 11/2/2020 SCALE: NTS
 SHEET: 19 OF 21
 DWG. NO. 1606DHPM REV B

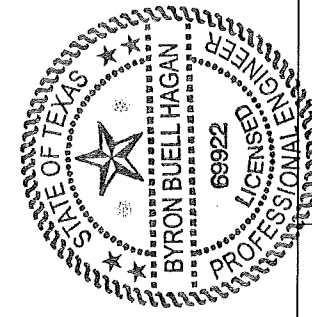
Nailor Industries Inc.
 4714 Winfield Road Houston, TX 77039
 www.nailor.com TEL: 281-590-1172 FAX: 281-590-3086
 TITLE: 1606DHPM LOUVER W/ AND W/O DAMPER AVAILABLE SHAPES



Byron Buell Hagan
 11/2/20

BILL OF MATERIALS			
ITEM	DESCRIPTION	MATERIAL	NOTES
1	C6-139 LOUVER HEAD	6063-T6 ALUMINIUM	
2	C6-140 LOUVER SILL	6063-T6 ALUMINIUM	
3	C6-141 LOUVER JAMB	6063-T6 ALUMINIUM	
4	C6-142 LOUVER BLADE	6063-T6 ALUMINIUM	
5	C6-168 LOUVER DRAIN	6063-T6 ALUMINIUM	
6	C6-143 LOUVER BLADE BRACE	6063-T6 ALUMINIUM	
7	C6-104 MULLION COVER	6063-T6 ALUMINIUM	
8	C6-096 LOUVER FLANGE	6063-T6 ALUMINIUM	
9A	C6-176 1 1/2 X 1 1/2 X 1/8 ANGLE CONT.	6063-T6 ALUMINIUM	USED AT HEAD/SILL/JAMB, OF LOUVER AND SLEEVE
9B	C6-160 2 X 2 X 1/8 ANGLE CONT.	6063-T6 ALUMINIUM	USE AS ATTACHMENT ANGLE
9C	1 1/2 X 1 1/2 X 3/16 ANGLE CONT.	6063-T6 ALUMINIUM	USE AS ATTACHMENT ANGLE
10	C6-161B 6 X 3 X 1/4 ANGLE	6063-T6 ALUMINIUM	USED AT BLADE SUPPORT AND JAMB SUPPORT
11	1 1/2 X 1 1/2 X 1/4 ANGLE	6063-T6 ALUMINIUM	USED AT HEAD/SILL/JAMB OF SLEEVE
12	4 X 2.50 X 1/4 X 3 5/8 LONG ANGLE	6063-T6 ALUMINIUM	USED AT HEAD/ SILL OF MULLION ATTACHMENT
13	4 X 2.50 X 1/4 X 3 5/8 LONG ANGLE	6063-T6 ALUMINIUM	USED AT HEAD/ SILL OF LOUVER SLEEVE ATTACHMENT
14	6 X 4 X 1/4 ALUMINIUM SUPPORT SHIM	6063-T6 ALUMINIUM	USED AT SILL FOR SUPPORT ANGLE
15	MULLION STIFFENER ALUM	6063-T6 ALUMINIUM	1/8 FORMED ALUM CHANNEL USED AT MULLION
16	FORMED SLEEVE 1/8 THK	5052-H32 ALUMINIUM	1/8 FORMED SLEEVE - DEPTH VARIES
17	B2-610 DAMPER HEAD/SILL	6063-T6 ALUMINIUM	
18	B2-609 DAMPER JAMB	6063-T6 ALUMINIUM	
19	B2-527 DAMPER BLADE	6063-T6 ALUMINIUM	
20	DAMPER BLADE SEAL	SILICONE / RUBBER TYPE	MATERIAL VARIES
21	DAMPER TOP/BOTTOM CLOSURE	ALUMINIUM	
22	DAMPER BUSHING	BRONZE / SS	
23	DAMPER LINKAGE BAR	SS	
24	DAMPER JAMB SEAL	SS	
25	NON DRIVE DAMPER AXEL ASM	SS	
26	DRIVE SIDE DAMPER AXLE ASM	SS	
27	C6X8.2 STEEL CHANNEL	ASTM A36	USED AT BLADE BLACE & MULLION
28			
29	7" X 21" ALUMINIUM SLEEVE BRACKET	6061-T6	MULLION SLEEVE BRACKET
30	MULLION MOUNTING ANGLE BRACKET	ASTM A36	MULLION MOUNTING
31	C6-180	SCREW,MTL,10-24X1,HEX	
32	C6-181	1/4 NYLON INSERT LOCKNUT	
33	C6-182	1/4-20x2-1/2 HEX CAP SCREW	
34	C6-183	WASHER,BONDED,10X1/2,SS	300 SERIES, SS COND. CW FY = 65 KSI
35	C6-184	SCREW,MTL,12-24-1-1/4,HEX	300 SERIES, SS COND. CW FY = 65 KSI
36	C6-185	1/4-20x1 HEX SCREW	300 SERIES, SS COND. CW FY = 65 KSI
37	C6-186	1/4 COMM. FLAT WASHER	300 SERIES, SS COND. CW FY = 65 KSI
38	C6-187	1/4-20x1 HEX CAP SCREW 18-8 SS	
39	C6-188	SCREW, MTL, HEX, 8 X 3/4	300 SERIES, SS COND. CW FY = 65 KSI
40	C6-189	SCREW, METAL, HW, 10-24 X 1-1/2,	300 SERIES, SS COND. CW FY = 65 KSI
41	C6-192	SCREW, MTL, HEX, 8 X 1-1/2,	300 SERIES, SS COND. CW FY = 65 KSI
42	C6-193	SCREW, METAL, HEX, 14 X 1-1/2	300 SERIES, SS COND. CW FY = 65 KSI
43	C6-194	SCREW, METAL, HEX, 12 X 1-1/2, SS	300 SERIES, SS COND. CW FY = 65 KSI
44	C6-195	1/4-20 X 1 1/4 HEX CAP SCREW 18-8 S/S	
45	C6-196	1/4-20 FIN. HEX NUT 18-8 S/S	
46	C6-197	1/4 LOCKWASHER 18-8 S/S	
47	C6-198	SCREW, MTL, HEX, 8 X 3/4,	300 SERIES, SS COND. CW FY = 65 KSI
48		3/8"-16 X 2 18-6 HEX HEAD BOLT SS	300 SERIES, SS COND. CW FY = 65 KSI
49		3/8-16 HEX LOCK NUT SS	300 SERIES, SS COND. CW FY = 65 KSI
50		3/8-FLAT WASHER SS	300 SERIES, SS COND. CW FY = 65 KSI

N:\Drawing\LOUVERS\AMCA\1606DHPM\1606DHPM 216 X 120 FL. Sleeve_TDL.dft

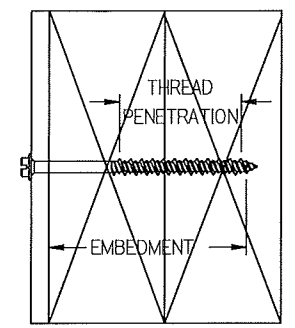
DWN BY: fcortinas DATE: 11/2/2020	CHK BY: Mastourian SCALE: NTS
	SHEET: 20 OF 21 DWG. NO. 1606DHPM
Nalor Industries Inc. 4714 Winfield Road Houston, TX 77039 www.nalor.com TEL: 281-590-1172 FAX: 281-590-3086	
TITLE: 1606DHPM LOUVER W/ AND W/O DAMPER SLEEVE / CONTINUOUS MOUNT BILL OF MATERIAL	
	
REV A: ITEM 12 & 13 4 X 2.50 WAS 4 X 3.00 (3A)	11/2/20

EMBEDMENT DEPTH IS EQUAL TO OVERALL LENGTH FOR CONCRETE /CMU FASTENERS. IF SHIMS ARE USED, FASTENER LENGTH MUST BE INCREASED BY THICKNESS OF SHIMS

LOUVER MODEL 1606DHPM FASTENER SCHEDULE

WOOD	STEEL STUD	STEEL	CONCRETE	CMU	MIN.	FASTENER TYPE	DIAMETER	# Rqd	CENTERS	EDGE	EMBEDMENT
JAMB ANGLE MOUNT FASTENER, WIDTH <= 72 INCHES											
X					SG 0.42	LAG SCREW (300 SERIES SS- COND. CW- Fy = 65ksi)	1/4"	1	3"	2"	2"
X					SG 0.42	LAG SCREW (300 SERIES SS- COND. CW- Fy = 65ksi)	3/8"	1	5"	2"	2"
	X				1/6 Gd.	ELCO DRILL-FLEX DRILLING SCREWS (300 SERIES SS- COND. CW- Fy= 65ksi)	1/4"	1	4-1/2"	2"	3 THREAD BEYOND SUBSTRATE
		X			A-36	ELCO DRILL-FLEX DRILLING SCREWS (300 SERIES SS- COND. CW- Fy= 65ksi)	1/4"	1	13-1/2"	2"	1/4"
		X			A-36	ELCO DRILL-FLEX DRILLING SCREWS (300 SERIES SS- COND. CW- Fy= 65ksi)	5/16"	1	16"	2"	1/4"
			X-CRACKED		4ksi	HILTI KWIK HUS-EZ	1/4"	1	5-3/4"	4"	1 5/8"
			X-CRACKED		4ksi	HILTI KWIK HUS-EZ	3/8"	1	8"	4"	1 5/8"
				X	1.5ksi	HILTI KWIK -CON II+	1/4"	1	4-3/4"	1-1/2"	1-3/4"
				X	1.5ksi	HILTI KWIK-BOLT 3+	3/8"	1	8"	4"	2-1/2"
MULLION ANGLE MOUNT FASTENERS, HEIGHT <= 120 INCHES											
X					SG 0.42	LAG SCREW (300 SERIES SS- COND. CW- Fy = 65ksi)	1/4"	10	VARIES	2"	4"
X					SG 0.42	LAG SCREW (300 SERIES SS- COND. CW- Fy = 65ksi)	1/2"	6	VARIES	2"	2"
		X			A-36	ELCO DRILL-FLEX DRILLING SCREWS (300 SERIES SS- COND. CW- Fy= 65ksi)	1/4"	4	VARIES	2"	1/4"
		X			A-36	ELCO DRILL-FLEX DRILLING SCREWS (300 SERIES SS- COND. CW- Fy= 65ksi)	5/16"	2	2-3/4"	2"	1/4"
			X-UNCRAKED		4ksi	HILTI KWIK BOLT 3 - C.S. **	3/8"	2	4"	7"	2-5/16"
			X-CRACKED		4ksi	HILTI KWIK BOLT TZ **	3/8"	2	4"	7"	4-7/16"
MULLION ANGLE MOUNT BACK OF WALL FASTENERS, HEIGHT <= 120 INCHES											
X					SG 0.42	LAG SCREW (300 SERIES SS- COND. CW- Fy = 65ksi)	1/4"	16	VARIES	1"	6"
X					SG 0.42	LAG SCREW (300 SERIES SS- COND. CW- Fy = 65ksi)	3/8"	12	VARIES	1-1/2"	6"
		X			A-36	ELCO DRILL-FLEX DRILLING SCREWS (300 SERIES SS- COND. CW- Fy= 65ksi)	1/4"	14	VARIES	1"	1/4"
		X			A-36	ELCO DRILL-FLEX DRILLING SCREWS (300 SERIES SS- COND. CW- Fy= 65ksi)	5/16"	12	VARIES	1"	1/4"
			X-UNCRAKED		4ksi	HILTI KWIK HUS-EZ **	1/2"	10	VARIES	3"	4-1/4"
			X-CRACKED		4ksi	HILTI KWIK BOLT TZ **	1/2"	10	VARIES	3"	3-5/8"

- GENERAL NOTES:**
- IT SHALL BE THE RESPONSIBILITY OF THE ENGINEER OF RECORD TO VERIFY THE STRUCTURAL INTEGRITY OF THE EXISTING STRUCTURE TO SUPPORT THE LOADS IMPOSED BY THE LOUVER(S).
 - THE 1606DHPM WITH /WITHOUT DAMPER HAVE BEEN DESIGNED AND TESTED IN ACCORDANCE WITH THE FLORIDA BUILDING CODE (FBC) AND TEST PROTOCOLS (TAS 100) WIND DRIVEN RAIN, (TAS-201 (IMPACT), TAS-202 (UNIFORM STATIC PRESSURE), AND TAS-203 (CYCLIC FATIGUE).
 - MAXIMUM SINGLE SECTION SIZE IS 72" WIDE X 120" HIGH.
 - MAXIMUM ASSEMBLED LOUVER SIZE IS UNLIMITED WIDE X 120" HIGH.
 - SECTIONS OR ASSEMBLIES MAY BE STACKED VERTICALLY PROVIDING A SUITABLE STRUCTURAL SUPPORT IS DESIGNED AND INSTALLED TO SUPPORT ALL LOADS TRANSFERRED FROM THE LOUVER.
 - CMU SHALL BE ASTM C90, TYPE II, 2,000 MIN PSI GROUT-FILLED.
 - THE SLEEVE MOUNT STYLE LOUVER UTILIZES AN ANCHORLESS INSTALLATION METHOD THAT DOES NOT REQUIRE THE USE OF FASTENERS INTO THE SUBSTRATE. IT MAY BE INSTALLED IN ANY SUBSTRATE THAT WILL WITHSTAND THE LOADS TRANSFERRED TO IT BY THE LOUVER. NAILOR IND. DOES NOT DETERMINE THE STRUCTURAL INTEGRITY OF THE SUBSTRATE STRUCTURE.
 - THE CONTINUOUS ANGLE MOUNT STYLE UTILIZES A CONTINUOUS JAMB ANGLE THAT IS ATTACHED TO THE SUBSTRATE BY FASTENERS. IT MAY BE INSTALLED IN CONCRETE, CMU, STEEL, OR WOOD ACCORDING TO THE FASTENER SCHEDULE. NAILOR IND. DOES NOT DETERMINE THE STRUCTURAL INTEGRITY OF THE SUBSTRATE STRUCTURE.
 - LOUVER ASSEMBLY IS QUALIFIED FOR A MAXIMUM DESIGN LOAD OF +/- 150 PSF.
 - LOUVER ASSEMBLY WITH AND WITHOUT DAMPER SHALL ONLY BE INSTALLED IN A LOCATION WHERE THE ROOM BEHIND THE LOUVER IS DESIGNED TO DRAIN WATER PENETRATING INTO THE ROOM AND THE ROOM WILL HOUSE WATER RESISTANT / WATER PROOF EQUIPMENT, COMPONENTS, AND / OR SUPPLIES.
 - INSTALLER TO PROVIDE SEPERATION OF DISSIMILAR MATERIALS AS REQUIRED.
 - THE 2020 DAMPER MAY BE OPERATED BY A MANUAL QUADRANT OR BY AN ELECTRIC OR PNEUMATIC ACTUATOR, THE DAMPER'S ACTUATOR IS NOT PART OF THIS APPROVAL, BUT SHALL BE CERTIFIED BY AN INDEPENDENT TESTING AGENCY.
 - FRAME CONSTRUCTION, HEAD AND SILL ARE SQUARE CUT, JAMBS ARE SQUARE CUT @ HEAD AND SILL. CORNERS ARE SECURED WITH (2) #10-24 X 1 1/2 HW, BLADES ARE SECURED TO JAMBS WITH (4) #10-24 X 1 1/2 HW, @ EACH END.
 - STEEL / STAINLESS-STEEL/ ALUMINIUM PARTS MAY BE MADE OUT OF ALTERNATE ALLOY THAT HAS EQUAL OR GREATER YIELD STRENGTH.
 - BLADE SUPPORT ANGLE AND BLADE SUPPORT BRACE ONLY REQUIRED WHEN ACTUAL LOUVER SECTION WIDTH IS GREATER THAN 36 INCHES.
 - THREAD PENETRATION LENGTH SIGNIFIES THE REQUIRED LENGTH OF THE THREADED PORTION OF THE FASTENER INTO THE WOOD SUBSTRATE PROVIDING FULL CONTACT WITH WOOD. LAG SCREW TIP CANNOT BE CONSIDERED PART OF THE THREADED PORTION OF THE SCREW. LAG SCREWS ARE NOT TO BE INSTALLED AT WOOD JOINTS/SPLICES WHERE THE LAG SCREW COULD FALL BETWEEN MEMEBERS.
- ** NOTE ENGINEER OF RECORD (EOR) IS RESPONSIBLE FOR DETERMINING IF CONCRETE IS TO BE CONSIDERED CRACKED OR UNCRACKED.



N:\Drawing\LOUVERS\AMCA\1606DHPM\1606DHPM 216 X 120 FL Sleeve.TD\dft

DWN BY: fcoirtinas	CHK BY: Mastourian	SCALE: NTS	SHEET: 21 OF 21	REV B
	DATE: 11/21/2020			
 4714 Winfield Road Houston, TX 77039 www.nailor.com TEL: 281-590-1172 FAX: 281-590-3086		1606DHPM LOUVER W/ AND W/O DAMPER NOTES AND FASTENER SCHEDULE		
		DWG. NO. 1606DHPM		

By: [Signature]
 11/21/20