

DRAWING INDEX


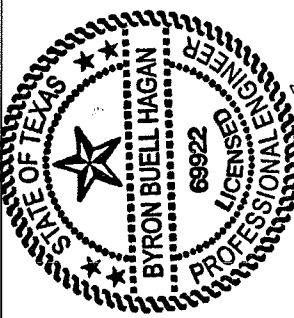
1. INDEX TO DRAWINGS AND NOTES
2. 1675WDVM LOUVER - ELAVATION
3. 1675WDVM LOUVER- HEAD AND SILL DETAIL
4. 1675WDVM LOUVER- SKINNY WALL APPLICATION HEAD AND SILL DETAIL.
5. 1675WDVM LOUVER - JAMB AND MULLION DETAIL
6. 1675WDVM LOUVER - BLADE STRAP DETAIL
7. 1675WDVM LOUVER - BAFFLE/ WEEP DETAIL
8. 1675WDVM LOUVER - SEALANT DETAIL
9. 1675WDVM LOUVER - PART PROFILES
10. 1675WDVM LOUVER - BILL OF MATERIAL AND GENERAL NOTES
11. 1675WDVM LOUVER - FASTENER SCHEDULE

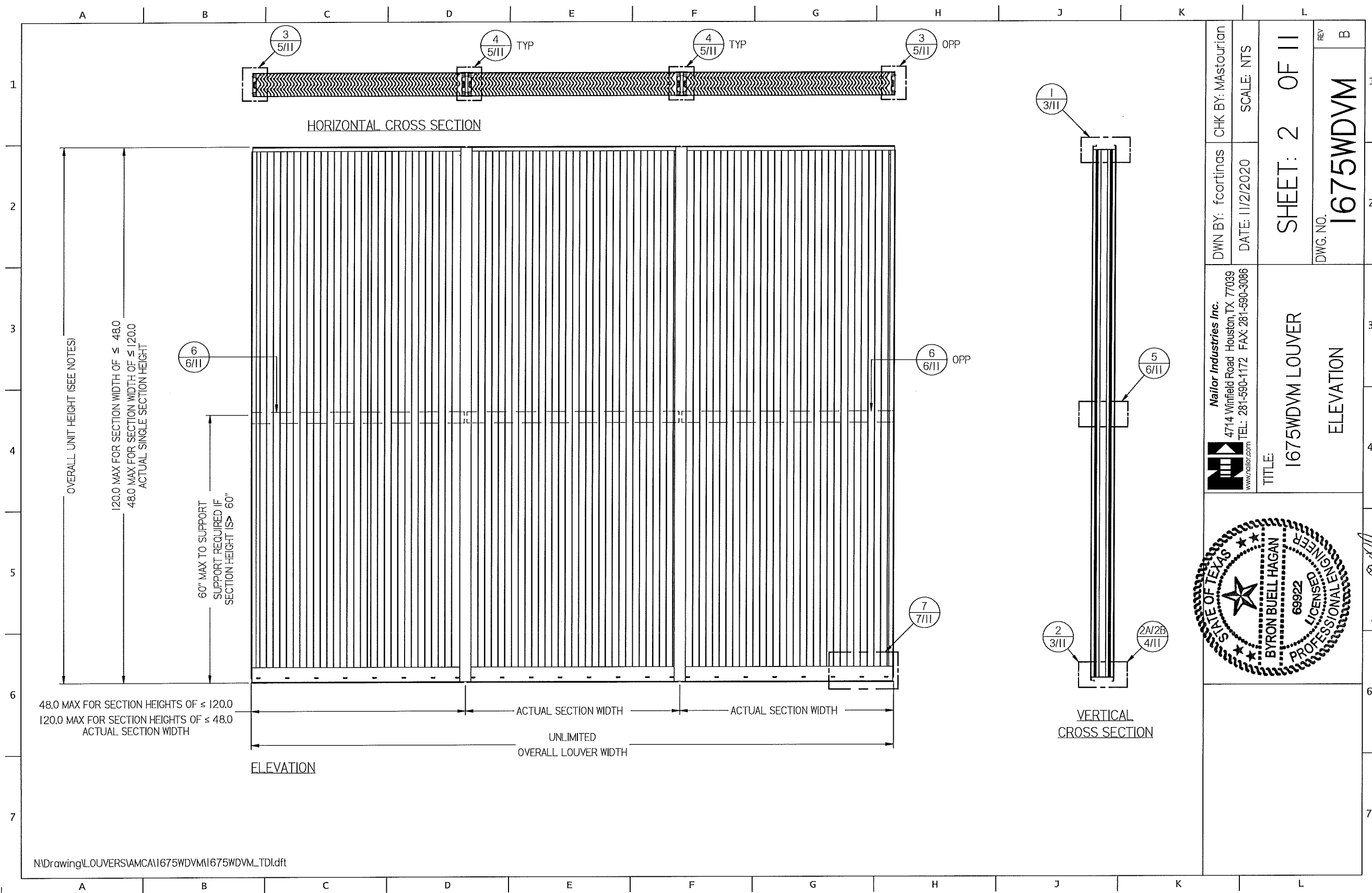
TESTS PREFORMED:  
 TAS-100 (A) WIND DRIVEN RAIN RESISTANCE  
 TAS-201 LARGE MISSILE IMPACT  
 TAS-202 UNIFORM STATIC AIR PRESSURE TEST  
 TAS-203 CYCLIC WIND PRESUSRE TEST  
 DESIGN PRESSURE RATING 150 PSF  
 2018 IBC  
 2018 IRC

NOTES:

1. THE 1675WDVM HAS BEEN TESTED IN ACCORDANCE WITH THE MIAMI-DADE COUNTY PROTOCOLS: TAS-100 A, TAS-201, TAS-202, & TAS-203 FOR WIND DRIVEN RAIN, LARGE MISSILE IMPACE, UNIFORM PRESSURE, AND CYCLIC WIND PRESSURE.
2. THIS LOUVER SYSTEM IS APPROVED FOR APPLICATIONS WITH DESIGN PRESSURES OF +/- 150 PSF OR LESS.
3. THIS LOUVER SYSTEM IS NON-BEARING AND IS NOT DESIGNED TO WITHSTAND BUILDING DEAD LOADS.
4. LOUVER ANCHORS ARE REVIEWED FOR ATTACHMENT INTO STEEL, CONCRETE, MASONRY, OR TIMBER STRUCTURE. MINIMUM EDGE DISTANCE AND EMBEDMENT REQUIREMENTS ARE SHOWN. NAILOR IND. DOES NOT DETERMINE THE STRUCTURE INTERGRITY OF THE SUBSTRUCTURE.
5. MAXIMUM SINGLE SECTION SIZE: 48" WIDE X 120" HIGH OR 120" WIDE X 48" HIGH.
6. MAXIMUM ASSEMBLED LOUVER SIZE UNLIMITED WIDE X 120" HIGH MAX. MULLION SPACING IS 48".

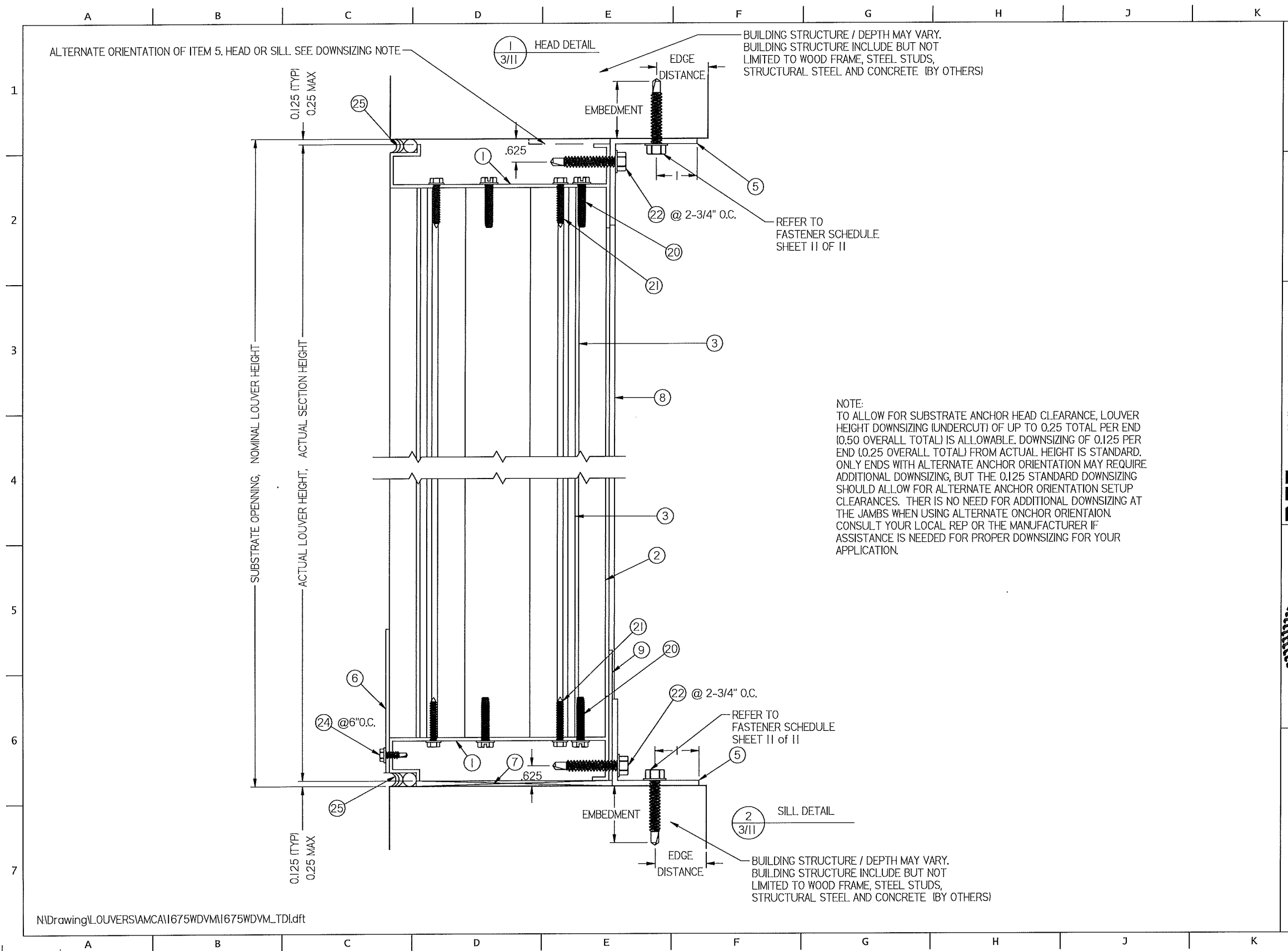
N:\Drawing\LOUVERS\AMCA\1675WDVM\1675WDVM\_TDI.dft

DWN BY: fcortinas DATE: 11/2/2020	CHK BY: Mastourian SCALE: NTS	SHEET: 1 OF 11	DWG. NO. <b>1675WDVM</b> REV B
 Nailor Industries Inc. 4714 Winfield Road Houston, TX 77039 TEL: 281-590-1172 FAX: 281-590-3086 www.nailor.com		TITLE: <b>1675WDVM LOUVER INDEX</b>	
		11/2/20 <i>Byron Buell Hagan</i>	
REV A ON PAGE 5 OF 11 REV B ON PAGE 1 OF 11 ADDED CODES 2018 IBC, 2018 IRC DELETED NOTE #7			



N:\Drawing\L\_OUVERS\AMCA\1675WDM\1675WDM.TD1.dft

DWN BY: fcoirtinas DATE: 11/2/2020	CHK BY: Mastourian SCALE: NTS	SHEET: 2 OF 11 REV B
	DWG. NO. 1675WDM	
Naylor Industries Inc. 4714 Winfield Road Houston, TX 77039 TEL: 281-590-1172 FAX: 281-590-3086 www.naylor.com		
TITLE: 1675WDM LOUVER		
ELEVATION		
11/2/20		



ALTERNATE ORIENTATION OF ITEM 5. HEAD OR SILL. SEE DOWNSIZING NOTE

1  
3/11 HEAD DETAIL

BUILDING STRUCTURE / DEPTH MAY VARY.  
BUILDING STRUCTURE INCLUDE BUT NOT LIMITED TO WOOD FRAME, STEEL STUDS, STRUCTURAL STEEL AND CONCRETE (BY OTHERS)

REFER TO FASTENER SCHEDULE SHEET 11 OF 11

NOTE:  
TO ALLOW FOR SUBSTRATE ANCHOR HEAD CLEARANCE, LOUVER HEIGHT DOWNSIZING (UNDERCUT) OF UP TO 0.25 TOTAL PER END (0.50 OVERALL TOTAL) IS ALLOWABLE. DOWNSIZING OF 0.125 PER END (0.25 OVERALL TOTAL) FROM ACTUAL HEIGHT IS STANDARD. ONLY ENDS WITH ALTERNATE ANCHOR ORIENTATION MAY REQUIRE ADDITIONAL DOWNSIZING, BUT THE 0.125 STANDARD DOWNSIZING SHOULD ALLOW FOR ALTERNATE ANCHOR ORIENTATION SETUP CLEARANCES. THERE IS NO NEED FOR ADDITIONAL DOWNSIZING AT THE JAMBS WHEN USING ALTERNATE ANCHOR ORIENTATION. CONSULT YOUR LOCAL REP OR THE MANUFACTURER IF ASSISTANCE IS NEEDED FOR PROPER DOWNSIZING FOR YOUR APPLICATION.

2  
3/11 SILL DETAIL

BUILDING STRUCTURE / DEPTH MAY VARY.  
BUILDING STRUCTURE INCLUDE BUT NOT LIMITED TO WOOD FRAME, STEEL STUDS, STRUCTURAL STEEL AND CONCRETE (BY OTHERS)

N:\Drawing\LOUVERS\AMCA\1675WDVM\1675WDVM.TDI.dft

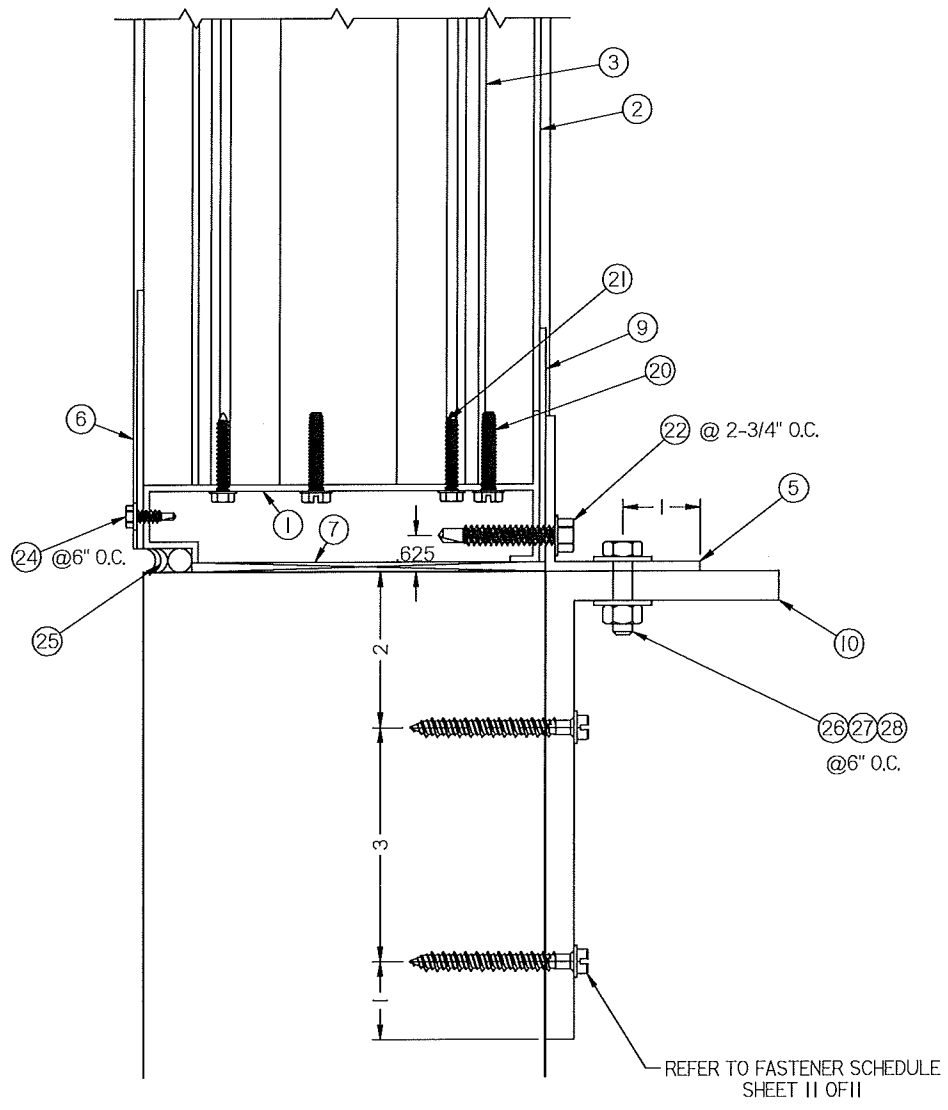
DWN BY: fcortinas DATE: 11/2/2020	CHK BY: Mastourian SCALE: NTS	SHEET: 3 OF 11 DWG. NO. 1675WDVM	REV B
	Naylor Industries Inc. 4714 Winfield Road Houston, TX 77039 TEL: 281-590-1172 FAX: 281-590-3086 www.naylor.com		
TITLE: 1675WDVM LOUVER HEAD AND SILL DETAIL			

A B C D E F G H J K L

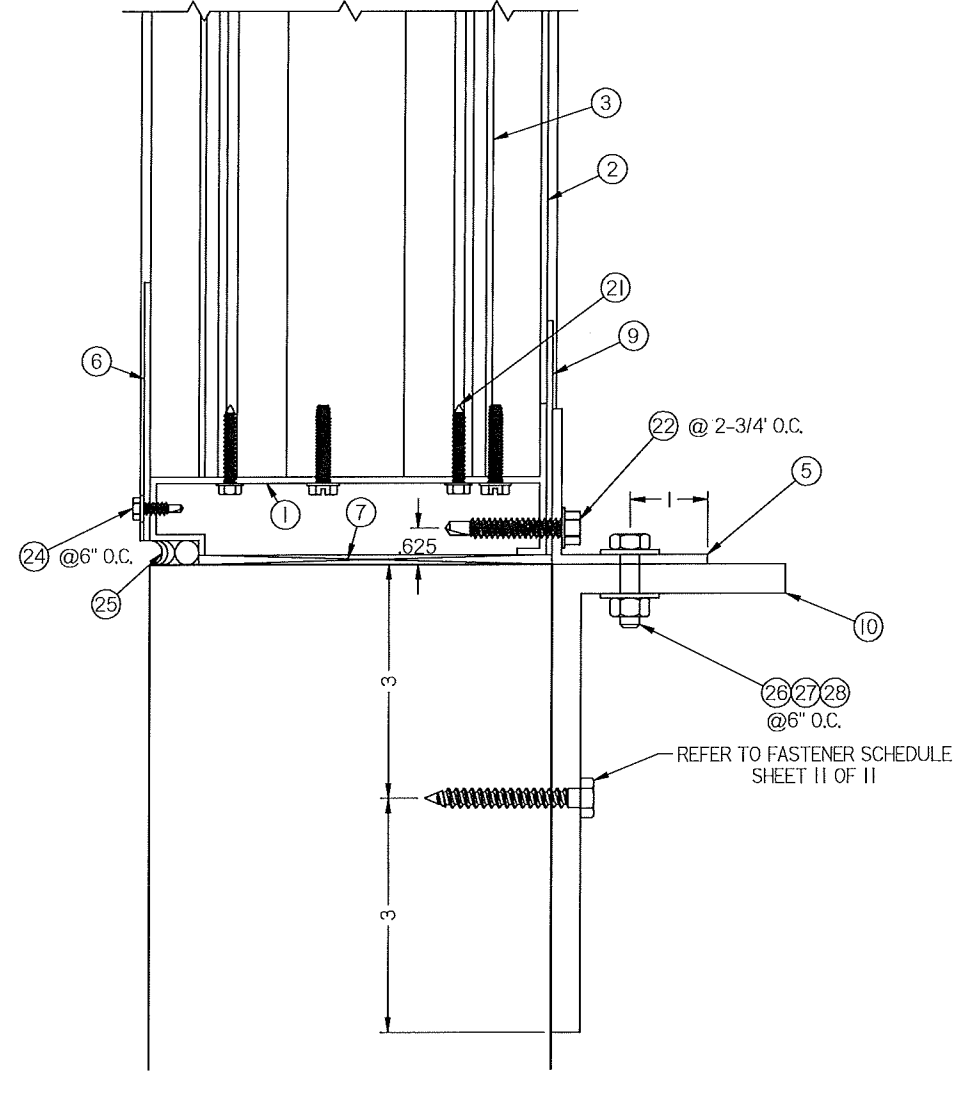
1  
2  
3  
4  
5  
6  
7

GROUT FILLED CMU  
(BY OTHERS)

WOOD / STEEL I6GA.  
STEEL A-36 / CONCRETE  
(BY OTHERS)



SILL DETAIL  
2A  
SKINNY WALL  
4/11



SILL DETAIL  
2B  
SKINNY WALL  
4/11

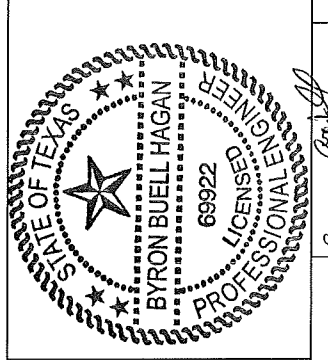
N:\Drawing\LOUVERS\AMCA\1675WDVM\1675WDVM\_TDI.dft

A B C D E F G H J K L

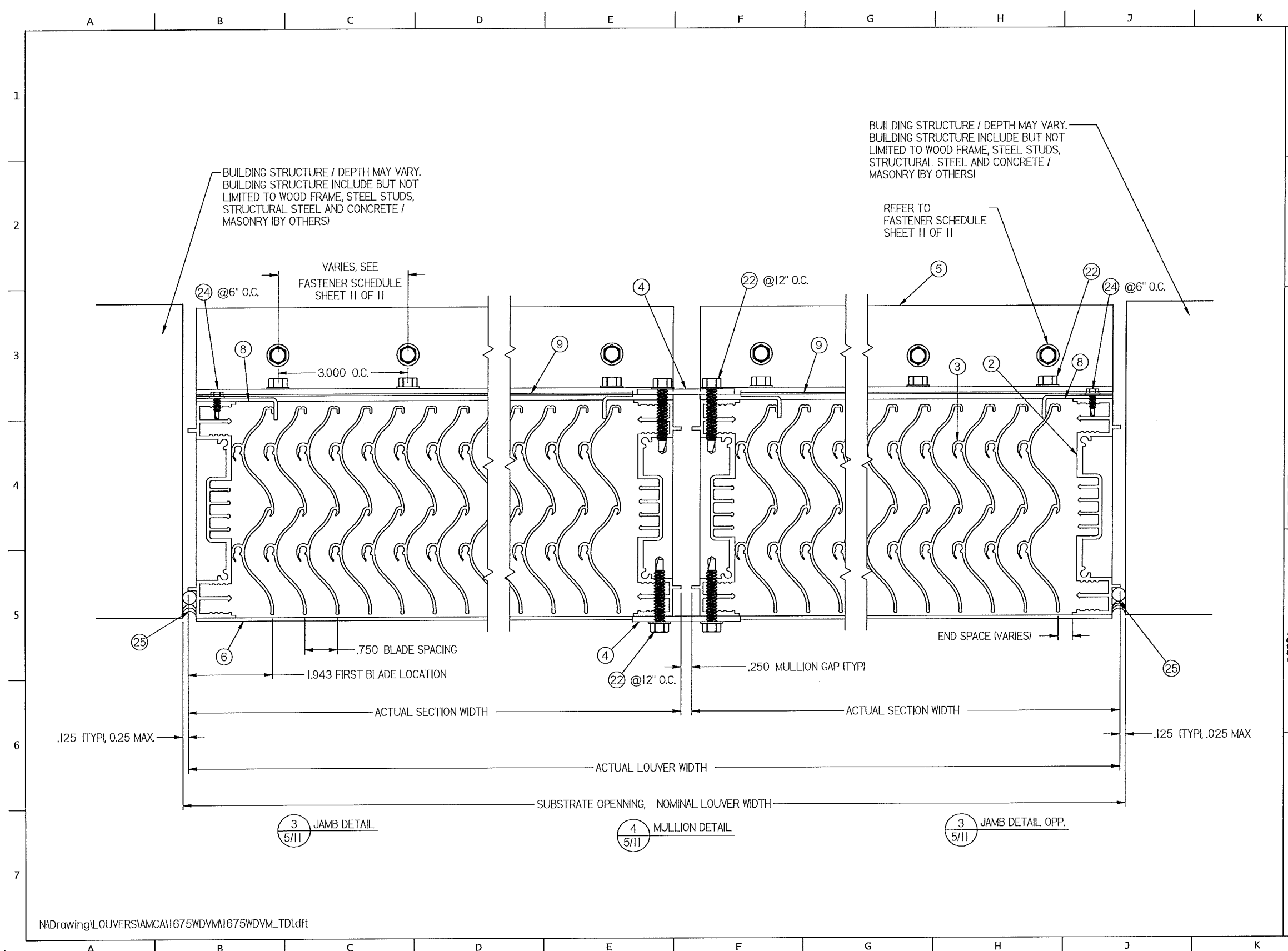
DWN BY: fcoartinas	CHK BY: Mastourian
DATE: 11/2/2020	SCALE: NTS
SHEET: 4 OF 11	
DWG. NO.	REV
1675WDVM	B

**Nailor Industries Inc.**  
 4714 Winfield Road Houston, TX 77039  
 TEL: 281-590-1172 FAX: 281-590-3086  
 www.nailor.com

TITLE:  
 1675WDVM LOUVER  
 SKINNY WALL APPLICATION  
 HEAD AND SILL DETAIL



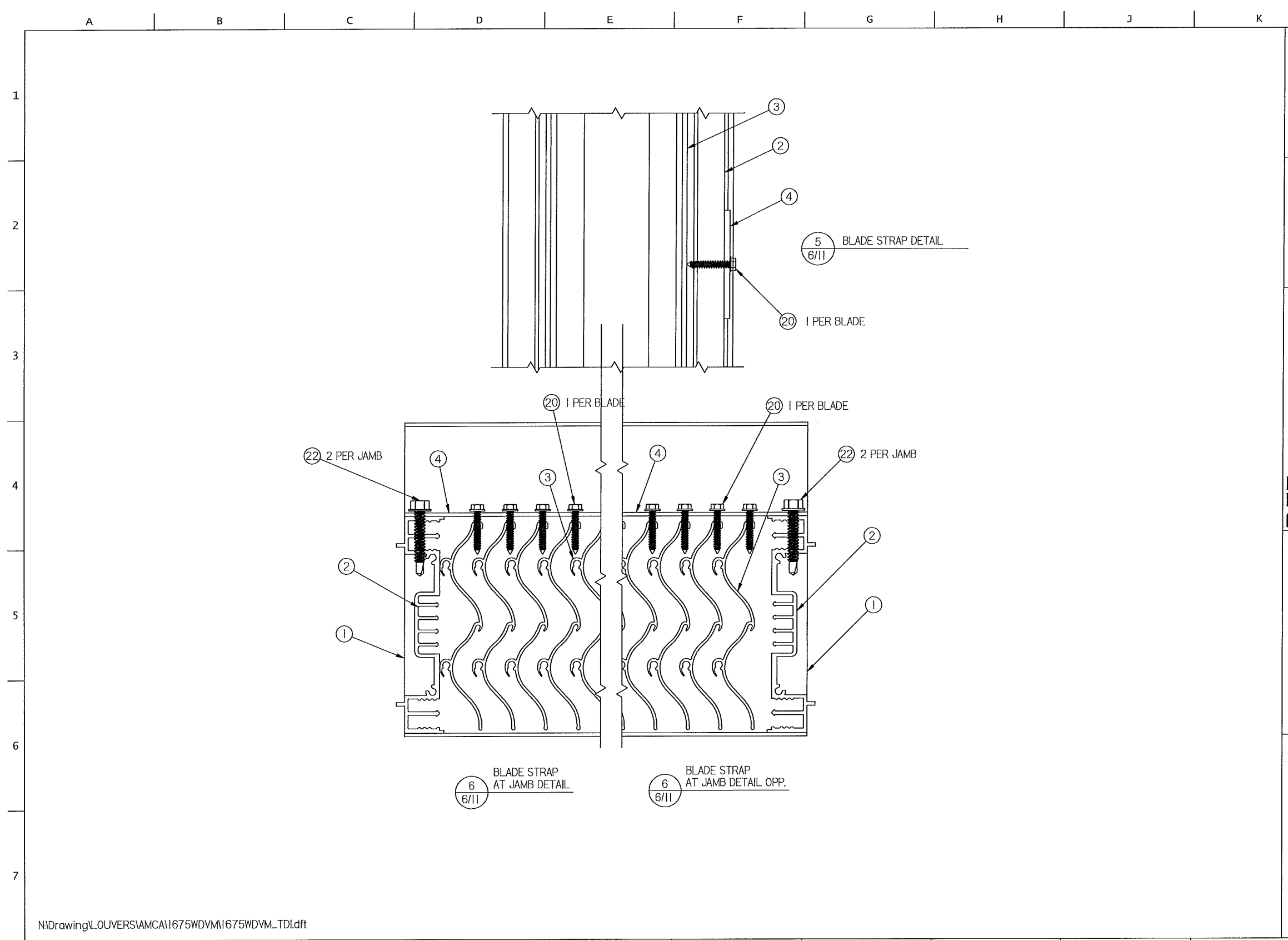
*Byron Buell Hagan*  
 11/2/20



N:\Drawing\LOUVERS\AMCA\1675WDM\1675WDM\_TDI.dft

DWN BY: fcartinas DATE: 11/2/2020	CHK BY: Mastourian SCALE: NTS	SHEET: 5 OF 11 DWG. NO. 1675WDM
	TITLE: 1675WDM LOUVER JAMB AND MULLION DETAIL	
Naylor Industries Inc. 4714 Winfield Road Houston TX 77039 TEL: 281-590-1172 FAX: 281-590-3086 www.naylor.com		
STATE OF TEXAS BYRON BUELL HAGAN 69922 LICENSED PROFESSIONAL ENGINEER		
REV A: ADDED 3.000 DIM (3C)		

*Byron Buell Hagan*

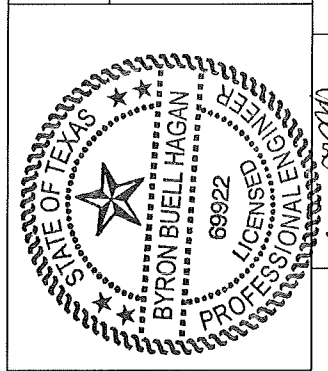


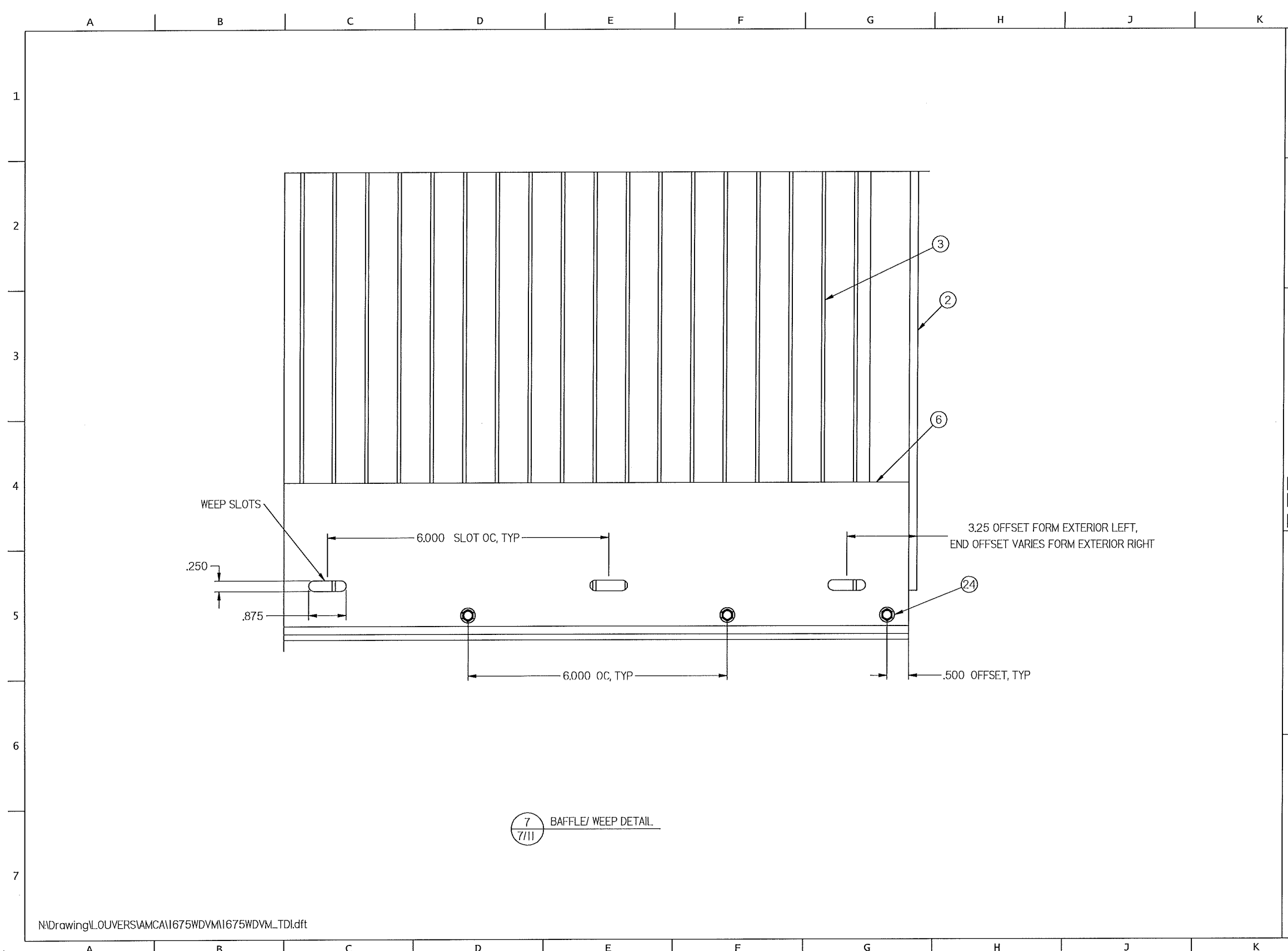
N:\Drawing\L\_OUVERS\AMCA\1675WDVM\1675WDVM\_TDI.dft

DWN BY: fcortinas	CHK BY: Mastourian
DATE: 11/2/2020	SCALE: NTS
SHEET: 6 OF 11	
DWG. NO. 1675WDVM	REV B

**Nailor Industries Inc.**  
 4714 Winfield Road Houston, TX 77039  
 TEL: 281-590-1172 FAX: 281-590-3086  
 www.nailor.com

TITLE: 1675WDVM LOUVER  
 BLADE STRAP DETAIL



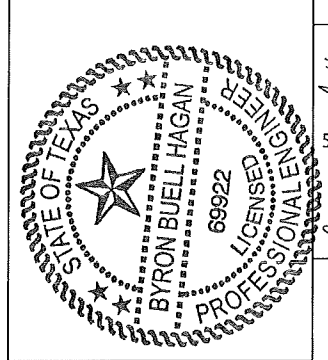


N:\Drawing\L\_OUVERS\AMCA\1675WDVM\1675WDVM\_TDI.dft

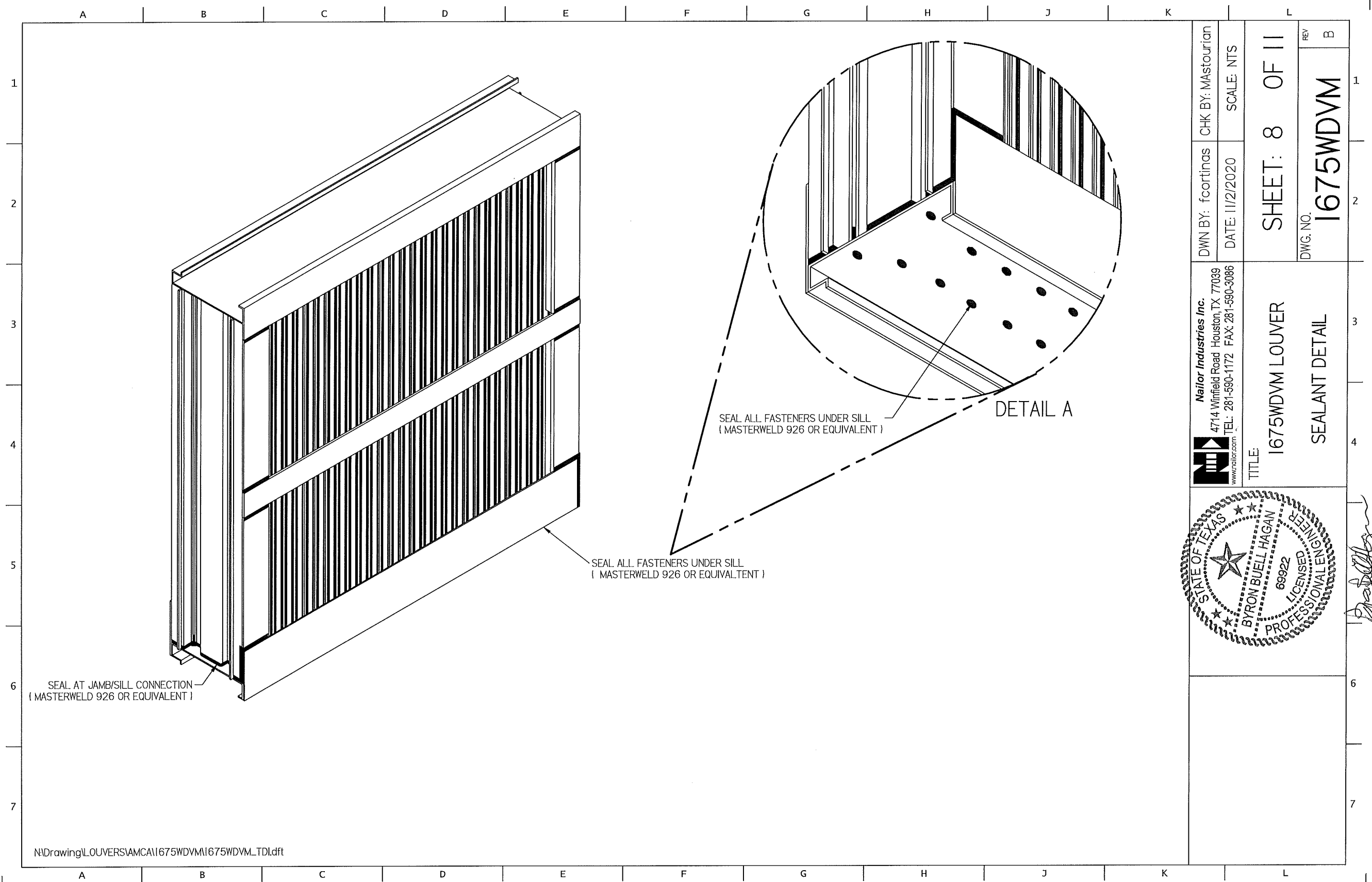
DWN BY: fcoirtinas	CHK BY: Mastourian
DATE: 11/2/2020	SCALE: NTS
SHEET: 7 OF 11	
DWG. NO.	REV
1675WDVM	B

**Mailor Industries Inc.**  
 4714 Winfield Road Houston, TX 77039  
 TEL: 281-590-1172 FAX: 281-590-3086  
 www.mailor.com


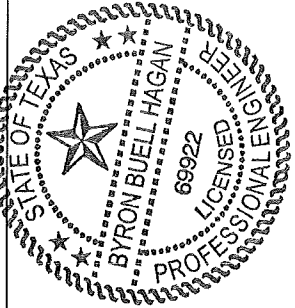
TITLE:  
 1675WDVM LOUVER  
 BAFFLE / WEEP DETAIL



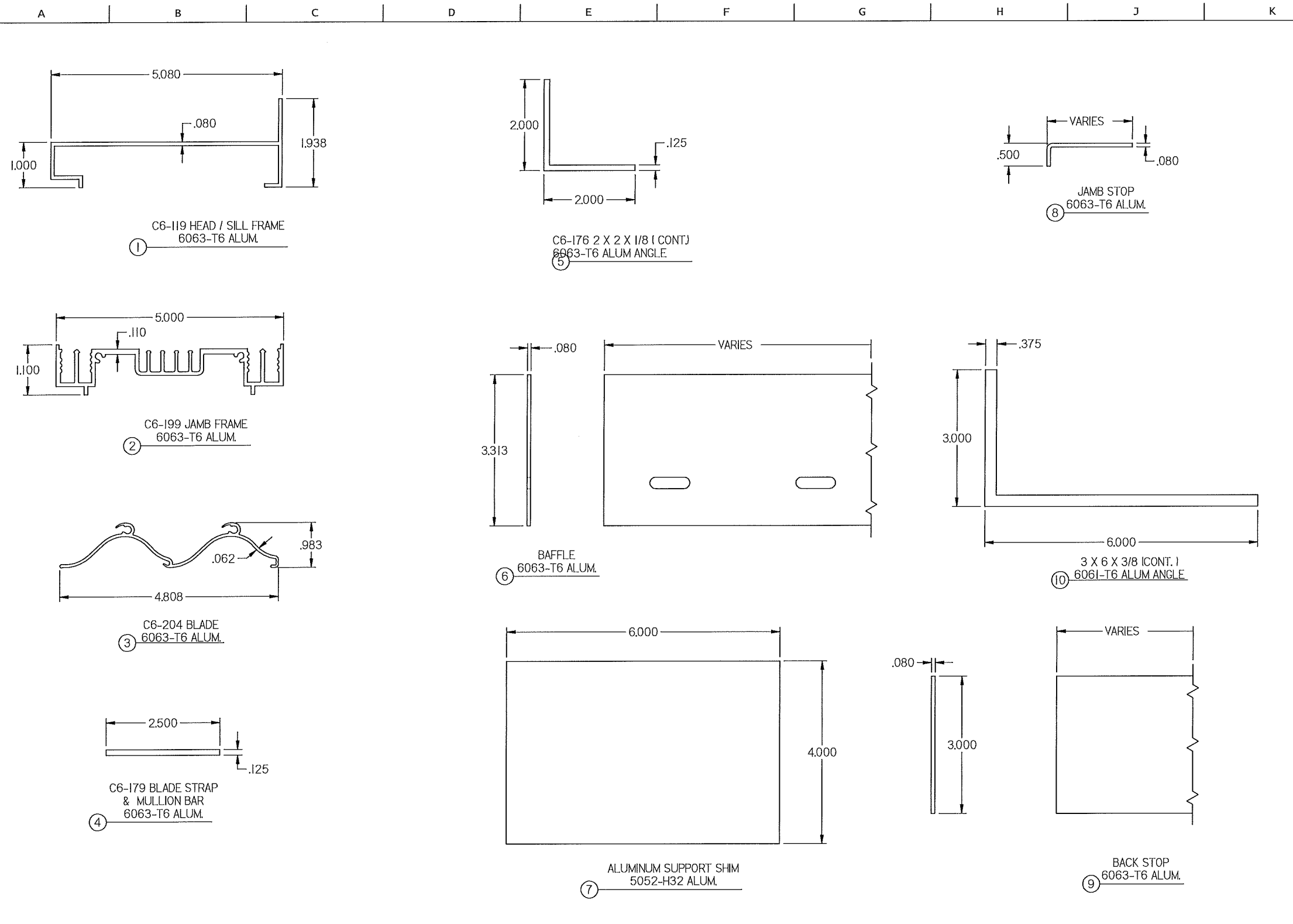
*Byron Buell Hagan*



N:\Drawing\LOUVERS\AMCA\1675WDVM\1675WDVM\_TDI.dft

 Nailor Industries Inc. 4714 Winfield Road Houston, TX 77039 TEL: 281-590-1172 FAX: 281-590-3086 www.nailor.com	DWN BY: fcoortinas DATE: 11/2/2020	CHK BY: Mastourian SCALE: NTS	SHEET: 8 OF 11 DWG. NO. 1675WDVM
	TITLE: 1675WDVM LOUVER SEALANT DETAIL		REV B
			<i>Byron Buell Hagan</i> 11/2/20



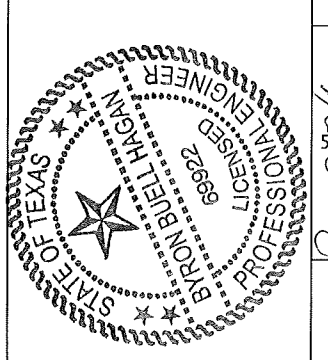


N:\Drawing\LOUVERSIAMCA\1675WDVM\1675WDVM\_TDI.dft

DWN BY: fcortinas	CHK BY: Mastourian	SCALE: NTS
DATE: 11/2/2020	SHEET: 9 OF 11	
DWG. NO. 1675WDVM		REV B

**Nalor Industries Inc.**  
 4714 Winfield Road Houston, TX 77039  
 TEL: 281-590-1172 FAX: 281-590-3086  
 www.nalor.com

**1675WDVM LOUVER**  
**PART PROFILES**



*Byron Bell Hagan*  
11/2/20

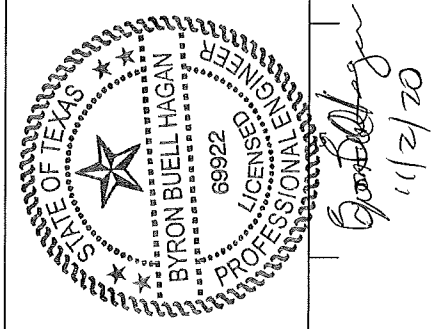
BILL OF MATERIAL				
ITEM.	INTERNAL ID	DESCRIPTION	MATERIAL	NOTES
1	1	C6-119	HEAD / SILL FRAME	6063-T6
	2	C6-199	JAMB FRAME	6063-T6
	3	C6-204	BLADE	6063-T6 .75" CENTERS/SPACING
	4	C6-179	BLADE STRAP / MULLION BAR	6063-T6 REQUIRED IF SECTION HEIGHT IS 60.0"
	5	C6-176	2 X 2 X 1/8 ANGLE ( CONT. )	6063-T6 AT HEAD AND SILL ONLY
	6	-	BAFFLE	6063-T6
2	7	-	ALUMINIUM SUPPORT SHIM	5052-H32 BY OTHERS , OPTIONAL, AS NEEDED ( 1/4" THICK MAX )
	8	-	JAMB STOP	6063-T6 VARIES AS NEED
	9	-	BACK STOP	6063-T6 VARIES WITH LOUVER WIDTH
	10	-	6 X3 X 3/8 ANGLE ( CONT. )	6061-T6 USED IN SKINNY WALL APPLICATION
	--			
	20	C6-189	SCREW,MACHINE , HW, #10-24 X 1 1/2, ZP	300 SERIES, SS COND CW 2 @ BLADE ENDS, AND BLADE STRAP ONE PER BLADE
3	21	C6-192	SCREW, MACHINE, MTL, HEX, #10 X 1 1/2, 410SS	300 SERIES, SS COND CW 2 @ FRAME CORNERS
	22	C6-193	SCREWM METAL, HEX, #14 X 1 1/2, 410SS	300 SERIES, SS COND CW @ HEAD AND SILL@ 2-3/4" O.C., AND @ BLADE STRAP 2 PER JAMBS
	24	C6-198	SCREW, MTL, HEX, #8 X 3/4, 410SS	300 SERIES, SS COND CW @ SILL AT BAFFLE @6"O.C. AND AT JAMB STOPS @ 6"O.C.
	25	-	SEALANT & BACKER ROD	VARIOUS BY OTHERS
	26	C6-181	1/4 NYLON INSERT LOCKNUT	STAINLESS
	27	C6-186	1/4 COMM"L FLAT WASHER	STAINLESS
4	28	C6-187	1/4-20 X 1 HEX CAP SCREW 18-8 SS	STAINLESS

GENERAL NOTES:

1. DUE TO PASSING TAS-100A, THE LOUVER IS DESIGNED TO PREVENT WIND DRIVEN RAIN FROM PENETRATING THE SPACE BEHIND THE LOUVER. AS SUCH, THE LOUVER MAY BE INSTALLED IN A LOCATION WHERE THE SPACE/ROOM BEHIND THE LOUVER IS NOT DESIGNED TO DRAIN WATER PENETRATING INTO THE ROOM OR THE ROOM WILL HOUSE NON-WATER RESISTANT/ PROOF EQUIPMENT, COMPONENTS, OR SUPPLIES.
2. INSTALLER TO PROVIDE SEPARATION OF DISSIMILAR MATERIALS AS REQUIRED. ALUMINUM DESIGN MANUAL (CHAPTER F) FOR DETAILS.
3. ALL ALUMINIUM, STAINLESS STEEL (SS), AND PLATED / COATED STEEL PARTS PROVIDED BY MANUFACTURER ARE INHERENTLY CORROSION RESISTANT OR HAVE A CORROSION RESISTANT COATING.
4. STEEL / STAINLESS, STEEL / ALUMINIUM PARTS MAY BE MADE OUT OF ALTERNATE ALLOY THAT HAS EQUAL OR GREATER YIELD STRENGTH. PART DIMENSIONS ARE MINIMUMS UNLESS DEFINED OTHER WISE.
5. THE INTERNAL ID# SHOWN ON PAGE 9 IS FOR FACTORY USE AND TRACKING PURPOSES ONLY AND MAY BE UPDATED AT ANY TIME. ANY UPDATES WILL NOT ALTER THE ITEM AS DESCRIBED HEREIN.

N:\Drawing\LOUVERS\AMCA\1675WDVM\1675WDVM.TDI.dft

DWN BY: fcortinas	CHK BY: MASTOURIAN	SCALE: NTS	SHEET: 10 OF 11	REV B
	DATE: 11/2/2020			
 Nailor Industries Inc. 4714 Winfield Road Houston, TX 77039 TEL: 281-590-1172 FAX: 281-590-3086 www.nailor.com		TITLE 1675WDVM LOUVER BILL OF MATERIAL GENERAL NOTES		



LOUVER MODEL 1675WDVM FASTENER SCHEDULE																
WOOD	STEEL STUD	STEEL	CONCRETE	CMU	SKINNY WALL	MIN.	FASTENER TYPE									
HEAD / SILL ANGLE FASTENER HEIGHTS <=120 INCHES							DIAMETER	# Rqd	O.C. SPACING	EDGE	EMBEDMENT					
X						SG 0.42	LAG SCREW (300 SERIES SS- COND. CW- Fy = 65ksi)					1/4"	1	2-3/4"	2"	3"
X						SG 0.42	LAG SCREW (300 SERIES SS- COND. CW- Fy = 65ksi)					3/8"	1	3	2"	3"
	X					16 Ga.	ELCO DRILL-FLEX DRILLING SCREWS (300 SERIES SS- COND. CW- Fy= 65ksi)					1/4"	1	2-1/2"	2"	3 THREADS BEYOND SUBSTRATE
		X				A-36	ELCO DRILL-FLEX DRILLING SCREWS (300 SERIES SS- COND. CW- Fy= 65ksi)					1/4"	1	8"	2"	1/4"
		X				A-36	ELCO DRILL-FLEX DRILLING SCREWS (300 SERIES SS- COND. CW- Fy= 65ksi)					5/16"	1	10"	2"	1/4"
			X-CRACKED			4ksi	HILTI KWIK HUS-EZ					1/4"	1	3-1/4"	4"	2-1/2"
			X-CRACKED			4ksi	HILTI KWIK HUS-EZ					3/8"		10"	4"	3-1/4"
X					X	SG 0.42	LAG SCREW (300 SERIES SS- COND. CW- Fy = 65ksi)					1/4"	1	3"	3"	3"
X					X	SG 0.42	LAG SCREW (300 SERIES SS- COND. CW- Fy = 65ksi)					3/8"	1	4"	3"	3"
	X				X	16 Ga.	ELCO DRILL-FLEX DRILLING SCREWS (300 SERIES SS- COND. CW- Fy= 65ksi)					1/4"	1	1"	3"	3 THREADS BEYOND SUBSTRATE
		X			X	A-36	ELCO DRILL-FLEX DRILLING SCREWS (300 SERIES SS- COND. CW- Fy= 65ksi)					1/4"	1	5"	3"	1/4"
		X			X	A-36	ELCO DRILL-FLEX DRILLING SCREWS (300 SERIES SS- COND. CW- Fy= 65ksi)					5/16"	1	6"	3"	1/4"
			X-CRACKED		X	4ksi	HILTI KWIK BOLT TZ					3/8"	1	6"	3"	2-3/8"
			X-CRACKED		X	4ksi	HILTI KWIK BOLT TZ					1/2"	1	8"	3"	2-3/8"
				X-GROUT FILLED	X	1.5ksi	ELCO AGGRE-GATORS (300 SERIES, SS- CON. CW - Fy= 65ksi)					1/4"	2	3"	2"	2"

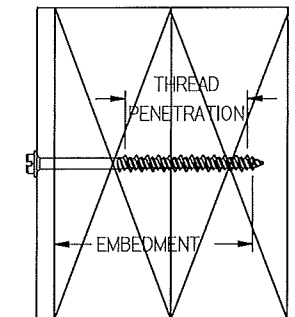
NOTE 1: CONCRETE MASONRY (CMU) SHALL BE > THE FOLLOWING, 6" WIDE, CMU CONFORMING TO ASTM C-90 FILLED WITH 4,747 KSI GROUT.

NOTE 2: CONCRETE MASONRY (CMU) SHALL BE > THE FOLLOWING, 6" WIDE, GRADE N, TYPE II, LIGHT-WEIGHT / MEDIUM-WEIGHT / NORMAL-WEIGHT CMU CONFORMING TO ASTM C-90. MORTAR MUST BE TYPE N.

NOTE 3: CONCRETE, STEEL, WOOD, MASONRY, CURTAIN WALL, STOREFRONT, AND ALL OTHER BUILDING SUBSTRATES ARE DESIGNED BY OTHERS.

NOTE 4: ENGINEER OF RECORD TO VERIFY THAT BUILDING SUBSTRATE CAN SUPPORT THE LOUVER REACTIONS.

NOTE 6: THREAD PENETRATION LENGTH SIGNIFIES THE REQUIRED LENGTH OF THE TREADED PORTION OF THE FASTENER INTO THE WOOD SUBSTRATE PROVIDING FULL CONTACT WITH THE WOOD. LAG SCREWS TIP CANNOT BE CONSIDERED PART OF THE THREADED PORTION OF THE SCREW. LAG SCREWS ARE NOT TO BE INSTALLED AT WOOD JOINTS / SPLICES WHERE THE LAG SCREW COULD FALL BETWEEN MEMBERS.



N:\Drawing\LOUVERS\AMCA\1675WDVM\1675WDVM.TDL.dft

CHK BY: Mastourian  
 DWN BY: fcortinas  
 DATE: 11/2/2020  
 SCALE: NTS  
 SHEET: 11 OF 11  
 DWG. NO. 1675WDVM  
 REV B

Nailor Industries Inc.  
 4714 Winfield Road Houston, TX 77039  
 TEL: 281-590-1172 FAX: 281-590-3086  
 www.nailor.com  
 TITLE: 1675WDVM LOUVER FASTENER SCHEDULE