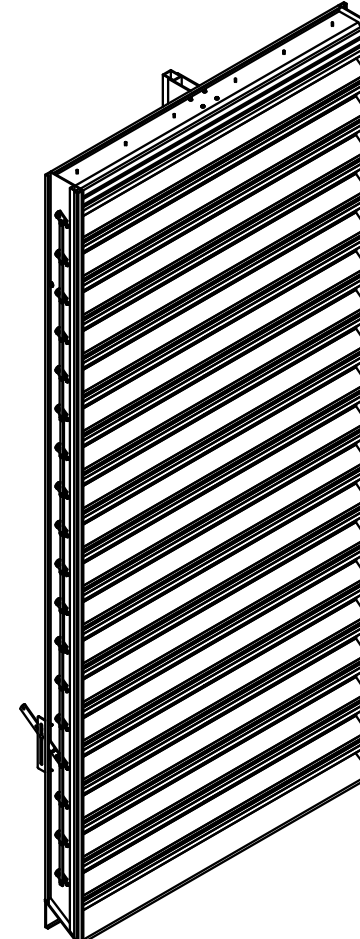


PARTS LIST FOR STANDARD CONSTRUCTION			
ITEM	DESCRIPTION	MATERIAL	ALLOY
1	HEAD FRAME	.125" THK EXTRUDED ALUM.	6063-T6
2	SILL FRAME	.125" THK EXTRUDED ALUM.	6063-T6
3	JAMB FRAME	.125" THK EXTRUDED ALUM.	6063-T6
4	FIXED BLADE	.080" THK EXTRUDED ALUM.	6063-T6
5	ADJUSTABLE BLADE	.070" THK EXTRUDED ALUM.	6063-T6
6	HIDDEN MULLION	.125" THK EXTRUDED ALUM.	6063-T6
7	BLADE BRACE	.080" THK EXTRUDED ALUM.	6063-T6
8	MULLION SUPPORT CHANNEL	.125" THK EXTRUDED ALUM.	6063-T6
9	MULLION SUPPORT	.125" THK EXTRUDED ALUM.	6063-T6
10	TOP BLADE STOP	.063" THK EXTRUDED ALUM.	6063-T6
11	BOTTOM BLADE STOP	.080" THK EXTRUDED ALUM.	6063-T6
12	BLADE STOP SEAL	.1875" X .50" - PARAFOAM 400	-
13	JAMB SEAL	.010" THK FORMED ALUM.	-
14	BLADE SEAL	SANTOPRENE 50 SHORE D	-
15	HAND QUADRANT PLATE	12 GA GALV STEEL	-
16	HAND QUADRANT ARM	10 GA GALV STEEL G60	-
17	TIE-BAR	1/2X12GA GALV	-
18	BEARING	.5" DIA SS	-
19	E SIDE LINKAGE CRANKARM ASSY	PLATED STEEL	-
20	F SIDE LINKAGE CRANKARM ASSY	PLATED STEEL	-
21	IDLER DRIVE AXLE	7/16" HEX STEEL ZINC PLATED	-
22	RETAINING RING: TRUARC E-50	ZINC YELLOW DICHROMATE PLATED	-
23	RETAINING RING: TRUARC E-25	ZINC YELLOW DICHROMATE PLATED	-
24	BLT CARR 1/4-20X1.00	ZINC COATED	-
25	WING NUT 1/4"-20	ZINC COATED	-
26	SCREW 8-18 X 3/4" LG HWH "AB" W/SEAL WASHER	410SS/ZINC COATED	-
27	SCREW 12-14 x 1" LG HWH "SDS"	410SS/ZINC COATED	-
28	SCREW 10-16 X 3/4" HWH "SDS"	410SS	-

ABBREVIATIONS:

CONT. - CONTINUOUS
 C-C - CENTER TO CENTER
 D - SUBSTRATE DEPTH
 DIM. - DIMENSION
 FLG. - FLANGE
 HDG - HOT DIPPED GALVANIZED
 H.V.B.S. - HIDDEN VERTICLE BLADE SUPPORT
 H.H.B.S. - HIDDEN HORIZONTAL BLADE SUPPORT
 HWH -HEX WASHER HEAD
 L.D. - LOUVER DIMENSION
 MAX. - MAXIMUM
 MIN. - MINIMUM
 NOM. - NOMINAL
 N.T.E. - NOT TO EXCEED
 N.T.S. - NOT TO SCALE
 O/C - ON CENTER
 OPP. - OPPOSITE
 R.O. - ROUGH OPENING
 REF. -REFERENCE
 S.S. - SHIP SECTION
 S.S.D. - SHIP SECTION DIMENSION
 S.D.S. - SELF DRILLING SCREW
 SIM. - SIMILAR
 STL - STEEL
 SUB. - SUBSTRATE
 TYP. - TYPICAL
 U.N.O. - UNLESS NOTED OTHERWISE



NOTES:

1. THE ELC6375DXD COMPLIES WITH THE REQUIREMENTS OF THE 2018 IBC. THE ELC6375DXD HAS BEEN TESTED IN ACCORDANCE WITH & QUALIFIED TO FLORIDA PROTOCOLS **TAS-201, 202, & 203** FOR LARGE MISSILE IMPACT, UNIFORM PRESSURE, CYCLIC WIND PRESSURE & **AMCA 550** FOR HIGH VELOCITY WIND DRIVEN RAIN.
2. QUALIFICATION TO **AMCA 550** ALLOWS THIS LOUVER TO BE INSTALLED IN A LOCATION WHERE THE ROOM BEHIND THE LOUVER IS NOT DESIGNED TO DRAIN WATER PENETRATING INTO THE ROOM & THE ROOM DOES NOT HOUSE WATER RESISTANT/WATER PROOF EQUIPMENT, COMPONENTS, OR SUPPLIES.
3. THIS LOUVER SYSTEM IS APPROVED FOR APPLICATIONS WITH DESIGN PRESSURES OF **+/- 110 PSF** OR LESS. THIS LOUVER SYSTEM IS NON-BEARING AND IS NOT DESIGNED TO WITHSTAND BUILDING DEAD LOADS.
4. RUSKIN DOES NOT DETERMINE THE STRUCTURAL INTEGRITY OF THE STRUCTURE. SUBSTRATE REQUIREMENTS GIVEN IN **TABLES 01 & 02** ON **SHEET 11** ARE AS NEEDED FOR ANCHORAGE ONLY.
5. MAXIMUM SINGLE SECTION SIZE IS **55" WIDE X 120" HIGH**. UNLIMITED WIDTH CAN BE ACCOMPLISHED BY PLACING SINGLE SECTIONS SIDE BY SIDE.
6. SECTIONS OR ASSEMBLIES MAY BE STACKED VERTICALLY PROVIDING A SUITABLE STRUCTURAL SUPPORT IS DESIGNED AND INSTALLED BY OTHERS TO SUPPORT ALL LOADS TRANSFERRED FROM THE LOUVER.
7. ALL WELDED ATTACHMENTS REQUIRE MIN. FILLER METAL OF 4043 ALUMINUM ALLOY WITH MIN. TENSILE STRENGTH OF 24 KSI.
8. PART NUMBERS WITH A SQUARE ARE **SHIPPED LOOSE**.

MULTI SECTION CONNECTION PARTS

ITEM	DESCRIPTION	MATERIAL	ALLOY
29	1/4-20 X 2.75" LG BOLT W/ WASHER & LOCKNUT	ZINC PLATED ASTM A307 GRADE A	-

INSTALLATION PARTS

ITEM	DESCRIPTION	MATERIAL	ALLOY
30	FORMED CLIP ANGLE 2" LG.	0.25" THK FORMED ALUM.	3003-H14
31	FORMED CLIP ANGLE 4" LG.	0.25" THK FORMED ALUM.	3003-H14
32	ALTERNATE ATTACHMENT ANGLE 2" LG.	0.25" THK EXTRUDED ALUM.	6063-T6
33	ALTERNATE ATTACHMENT ANGLE 4" LG.	0.25" THK EXTRUDED ALUM.	6063-T6
34	ALTERNATE FORMED CLIP ANGLE 2" LG.	0.25" THK FORMED ALUM.	3003-H14
35	ALTERNATE FORMED CLIP ANGLE 4" LG.	0.25" THK FORMED ALUM.	3003-H14
36	#10-16X1 1/2" LG "HWH" TYPE "SDS"	410SS	-
37	STANDARD CLIP ANGLE INSTALLATION SUBSTRATE FASTENER(REF TABLE 1/11)	VARIES	-
38	DOUBLE CLIP ANGLE INSTALLATION SUBSTRATE FASTENER(REF TABLE 2/11)	VARIES	-
39	3/8-16X1 1/2" BOLT W/NUT	ZINC PLATED ASTM A307 GRADE A	-

UNIVERSAL SLEEVE PARTS

ITEM	DESCRIPTION	MATERIAL	ALLOY
40	FRONT FLANGE UNIVERSAL SLEEVE	MIN. .125" THK FORMED ALUM.	5005-H34 OR 3003-H14
41	HEAD FRAME W/ INTEGRAL FLANGE	.125" THK EXTRUDED ALUM.	6063-T6
42	SILL FRAME W/ INTEGRAL FLANGE	.125" THK EXTRUDED ALUM.	6063-T6
43	JAMB FRAME W/ INTEGRAL FLANGE	.125" THK EXTRUDED ALUM.	6063-T6
44	CONT. RETAINING ANGLE	.250" THK EXTRUDED ALUM.	6063-T6
45	1/4-14 "HWH" TYPE "SDS"	410SS	-

DRAWING INDEX:

- SHEET 01** - NOTES, PARTS LIST & DRAWING INDEX
SHEET 02 - SINGLE SECTION & THEIR SECTION VIEWS
SHEET 03 - BASIC LOUVER CONNECTION DETAILS
SHEET 04 - ASSEMBLY 'A' & SECTION VIEWS
SHEET 05 - ASSEMBLY 'B' & SECTION VIEWS
SHEET 06 - STANDARD & ALTERNATE INSTALLATION DETAILS
SHEET 07 - ALTERNATE INSTALLATION DETAILS
SHEET 08 - ASSEMBLY 'C' UNIVERSAL SLEEVE
SHEET 09 - ASSEMBLY 'D' UNIVERSAL SLEEVE
SHEET 10 - UNIVERSAL SLEEVE ATTACHMENT DETAILS
SHEET 11 - SUBSTRATE FASTENER TABLES
SHEET 12 - PARTS (ITEMS 1 THRU 8)
SHEET 13 - PARTS (ITEMS 9 THRU 18)
SHEET 14 - PARTS (ITEMS 19 THRU 23)
SHEET 15 - PARTS (ITEMS 30 THRU 35)
SHEET 16 - PARTS (ITEMS 40 THRU 44)



MELISSA M. MASSAR, P.E.
 NO. 132158

Tolerances
 Unless Stated Otherwise
 Use WIQ-007, WIQ-008
 Fractions ±1/16
 Two Decimals ±0.020
 Three Decimals ±0.010
 Angle Dimensions ±2'

REV	DESCRIPTION	BY	CHK	APVD	ECN	DATE
A	REV'D ENGINEER OF RECORD, UPDATED INFO.	NS	MMM	MMM		12/11/20
AUTHOR	NS	10/10/2018	3900 Doctor Greaves Road, Grandview, MO 64030 PROPRIETARY & CONFIDENTIAL			
CHECKED	MMM	10/22/2018				
APPROVED	MMM	10/22/2018				
MATERIAL	EXTRUDED ALUMINUM	PRODUCT ELC6375DXD - EXTRUDED COMBINATION LOUVER				
TITLE NOTES, PARTS LIST & DRAWING INDEX						
SIZE	B	DWG NO	60-022427-00B		REV	A
SCALE	N.T.S.	INVENTOR	SHEET 1 OF 16			

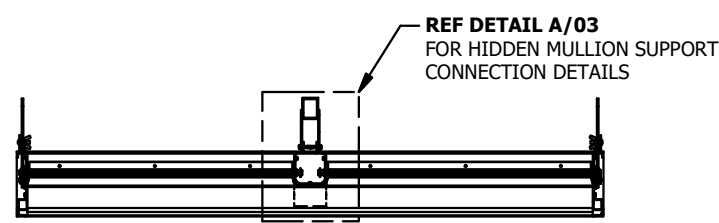


MELISSA M. MASSAR, P.E.
NO. 132158

REF DETAIL B/03
FOR HEAD CONNECTION
DETAILS

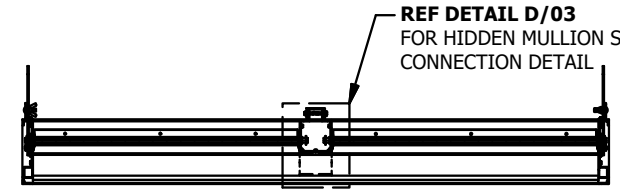
REFER DETAIL G/03
FOR QUAD ARM-JAMB
CONNECTION DETAIL

REF DETAIL C/03
FOR SILL CONNECTION
DETAILS



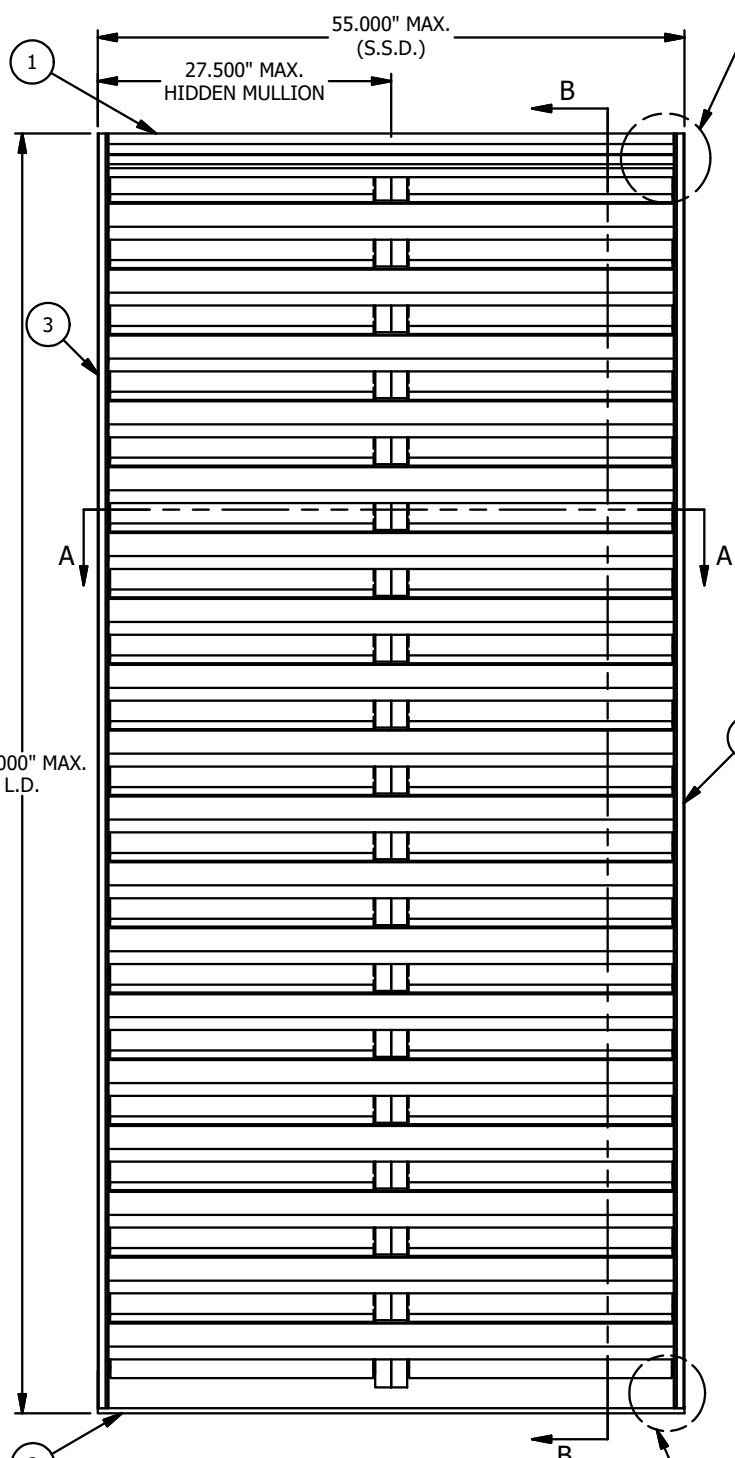
SECTION A-A

REF DETAIL A/03
FOR HIDDEN MULLION SUPPORT
CONNECTION DETAILS



SECTION C-C

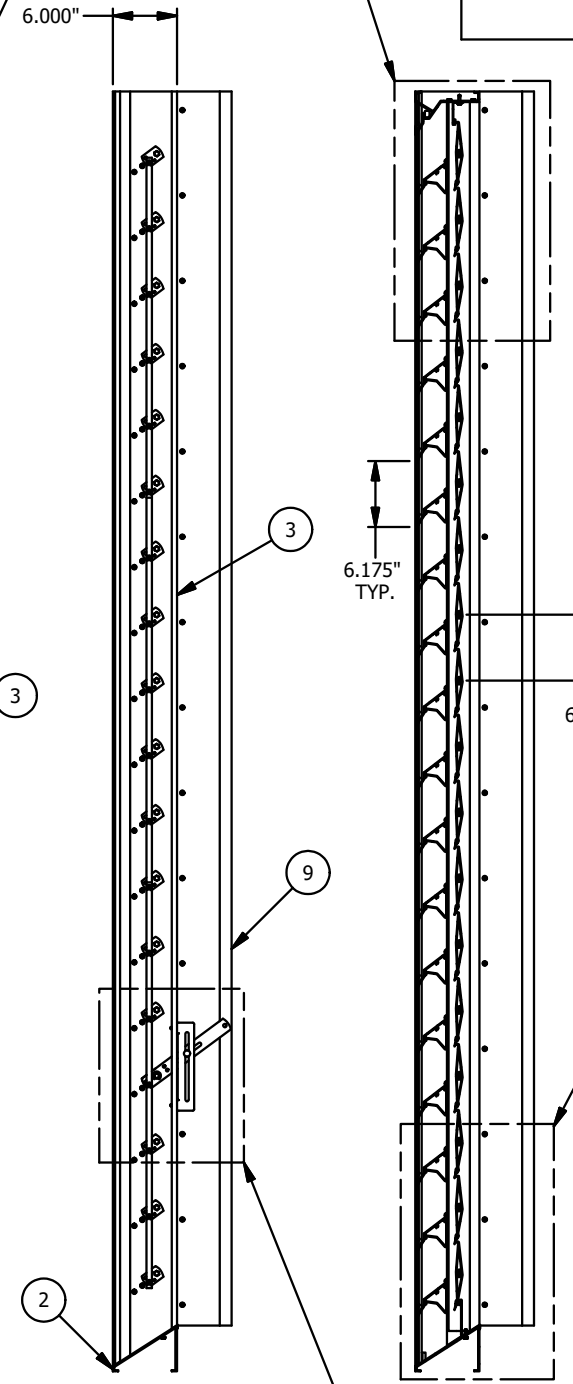
REF DETAIL D/03
FOR HIDDEN MULLION SUPPORT
CONNECTION DETAIL



SINGLE SECTION VIEWS
N.T.S.
LOUVER HEIGHT > 75.75"

REF DETAIL B/03
FOR HEAD CONNECTION
DETAILS

REF DETAIL F/03
FOR HEAD WELDMENT
& SEALANT DETAILS

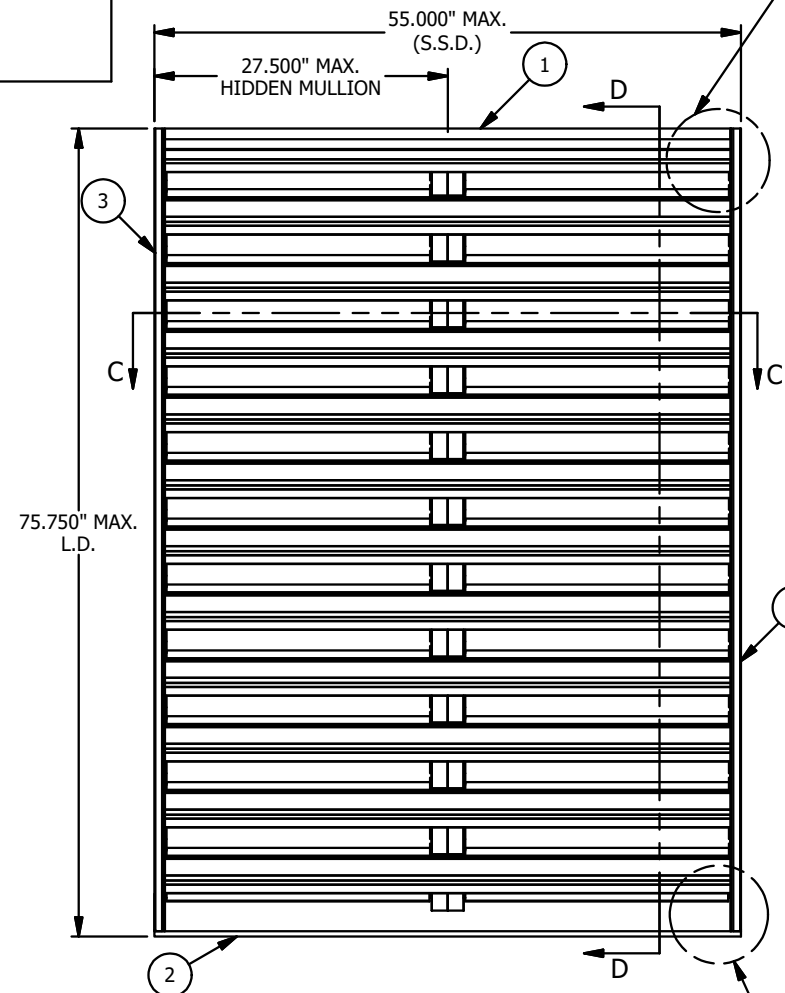


SIDE VIEW

SECTION B-B

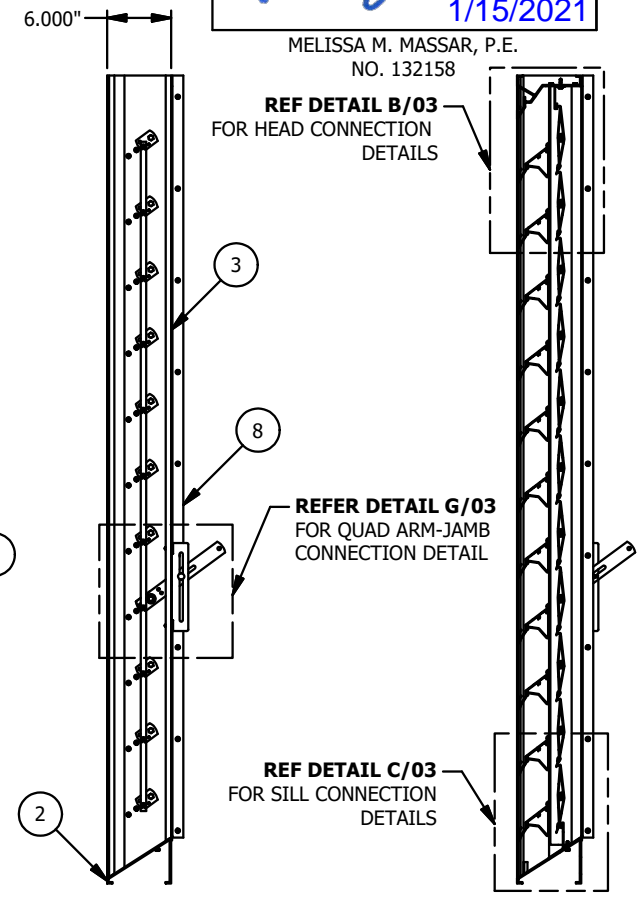
REF DETAIL E/03
FOR SILL WELDMENT
& SEALANT DETAILS

REFER DETAIL G/03
FOR QUAD ARM-JAMB
CONNECTION DETAIL



SINGLE SECTION VIEWS
N.T.S.
LOUVER HEIGHT ≤ 75.75"

REF DETAIL F/03
FOR HEAD WELDMENT
& SEALANT DETAILS

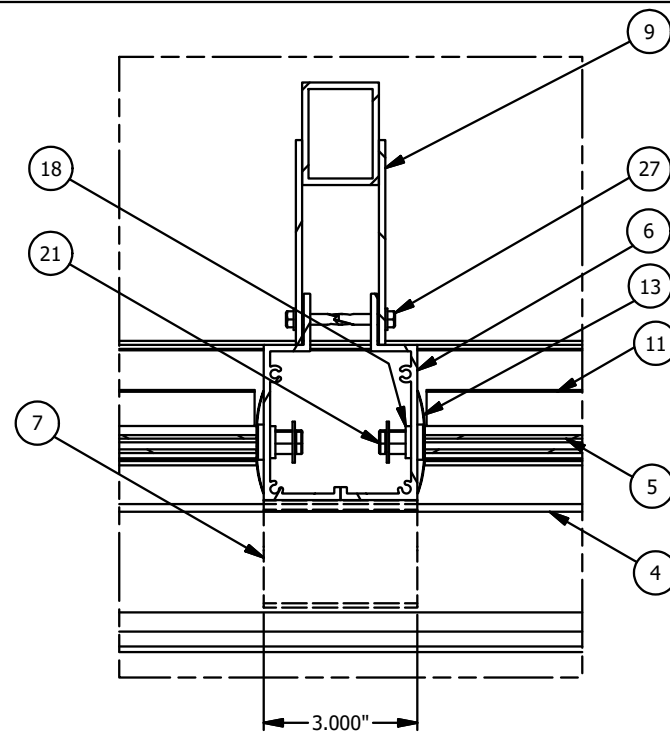


SIDE VIEW

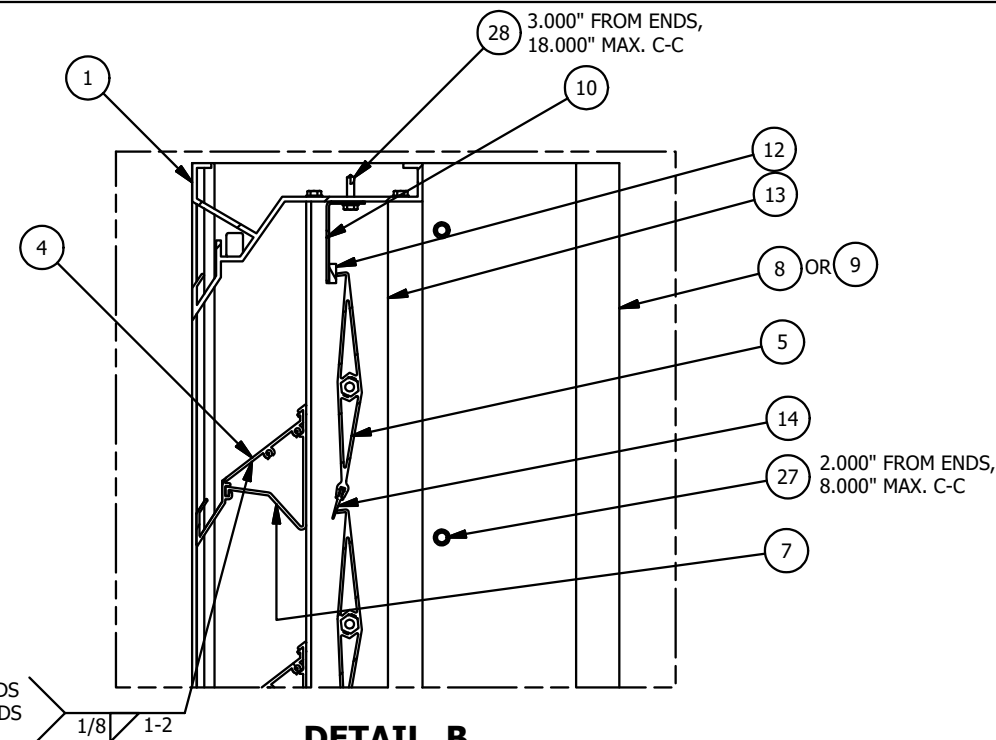
SECTION D-D

REF DETAIL E/03
FOR SILL WELDMENT
& SEALANT DETAILS

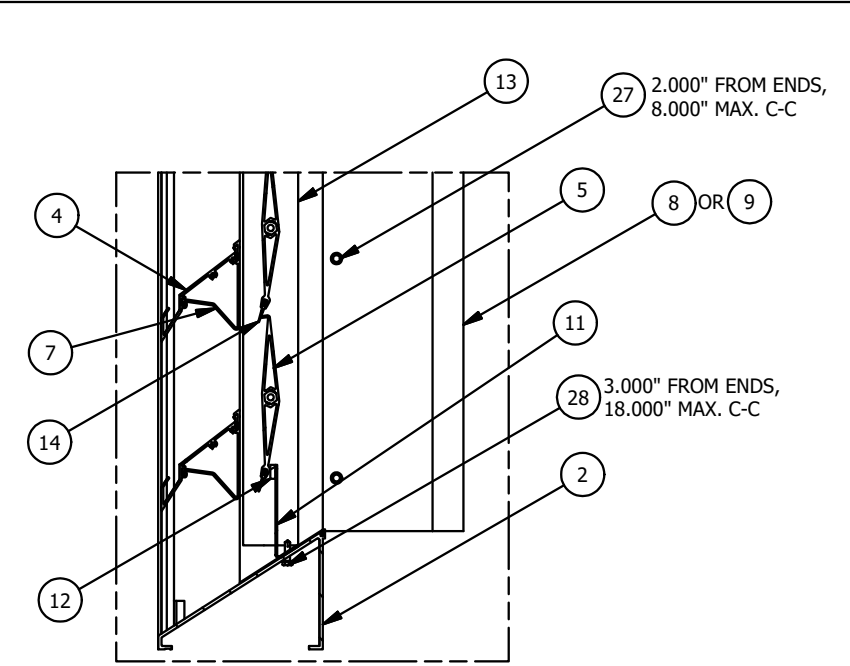
REV	DESCRIPTION	BY	CHK	APVD	ECN	DATE
A	REV'D ENGINEER OF RECORD, UPDATED INFO.	NS	MMM	MMM		12/11/20
AUTHOR	NS	10/10/2018	 3900 Doctor Greaves Road, Grandview, MO 64030 PROPRIETARY & CONFIDENTIAL			
CHECKED	MMM	10/22/2018				
APPROVED	MMM	10/22/2018				
MATERIAL	EXTRUDED ALUMINUM	PRODUCT ELC6375DXD - EXTRUDED COMBINATION LOUVER				
TITLE ASSEMBLY 'A', ASSEMBLY 'B' & SECTION VIEWS						
SIZE	B	DWG NO	60-022427-00B		REV	A
ECN		SCALE	N.T.S.		INVENTOR	SHEET 2 OF 16



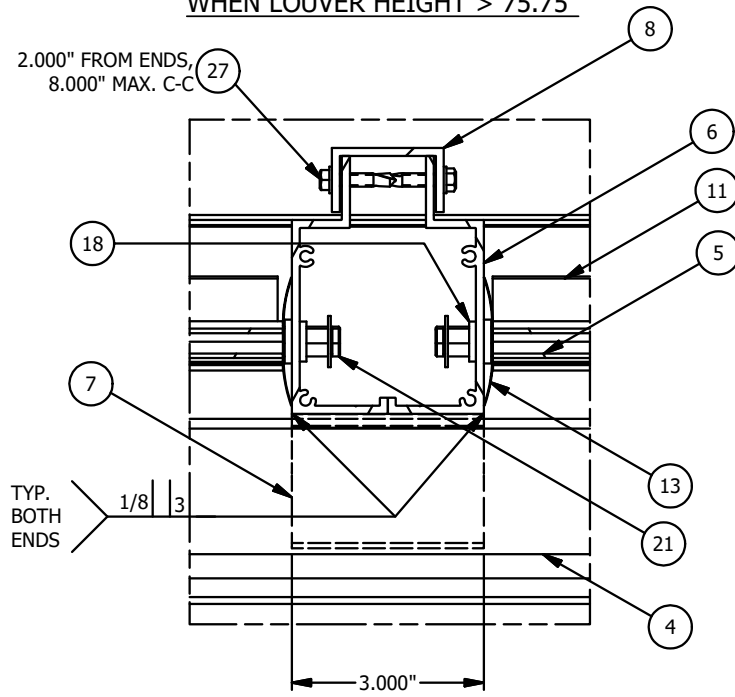
DETAIL A
HIDDEN MULLION SUPPORT CONNECTION DETAIL
WHEN LOUVER HEIGHT > 75.75"



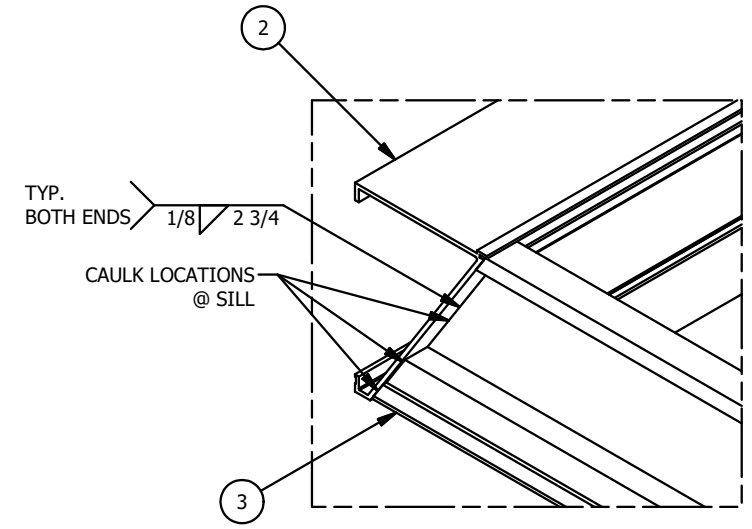
DETAIL B
HEAD CONNECTION DETAIL



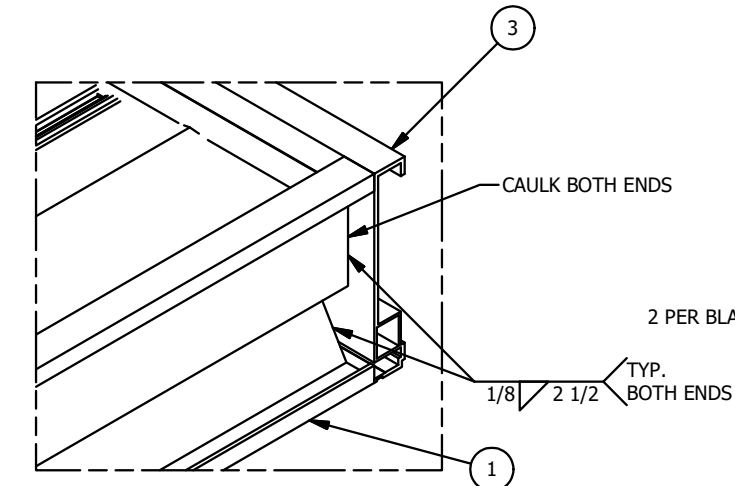
DETAIL C
SILL CONNECTION DETAIL



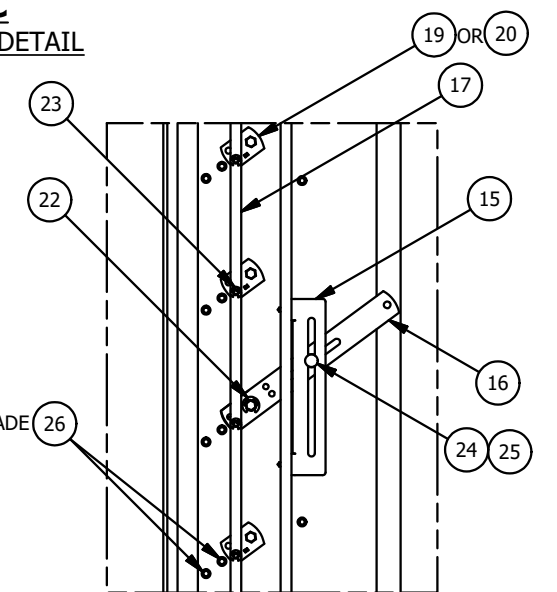
DETAIL D
HIDDEN MULLION SUPPORT CONNECTION DETAIL
WHEN LOUVER HEIGHT ≤ 75.75"



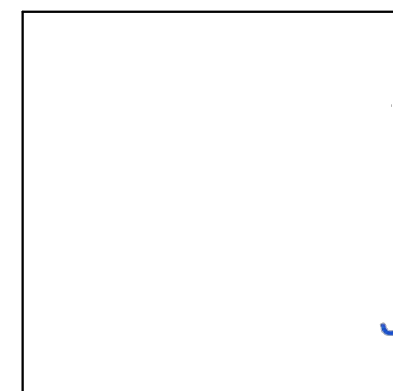
DETAIL E
SILL WELDMENT & SEALANT DETAILS



DETAIL F
HEAD WELDMENT & SEALANT DETAILS

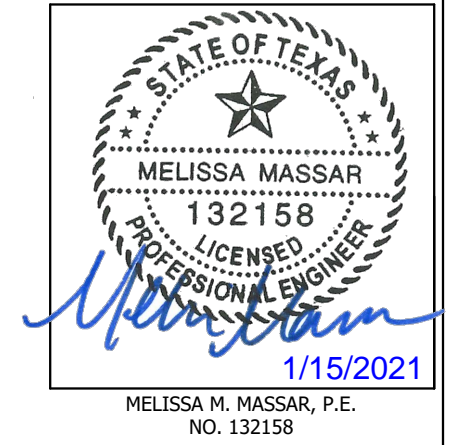


DETAIL G
QUAD ARM-JAMB CONNECTION DETAIL

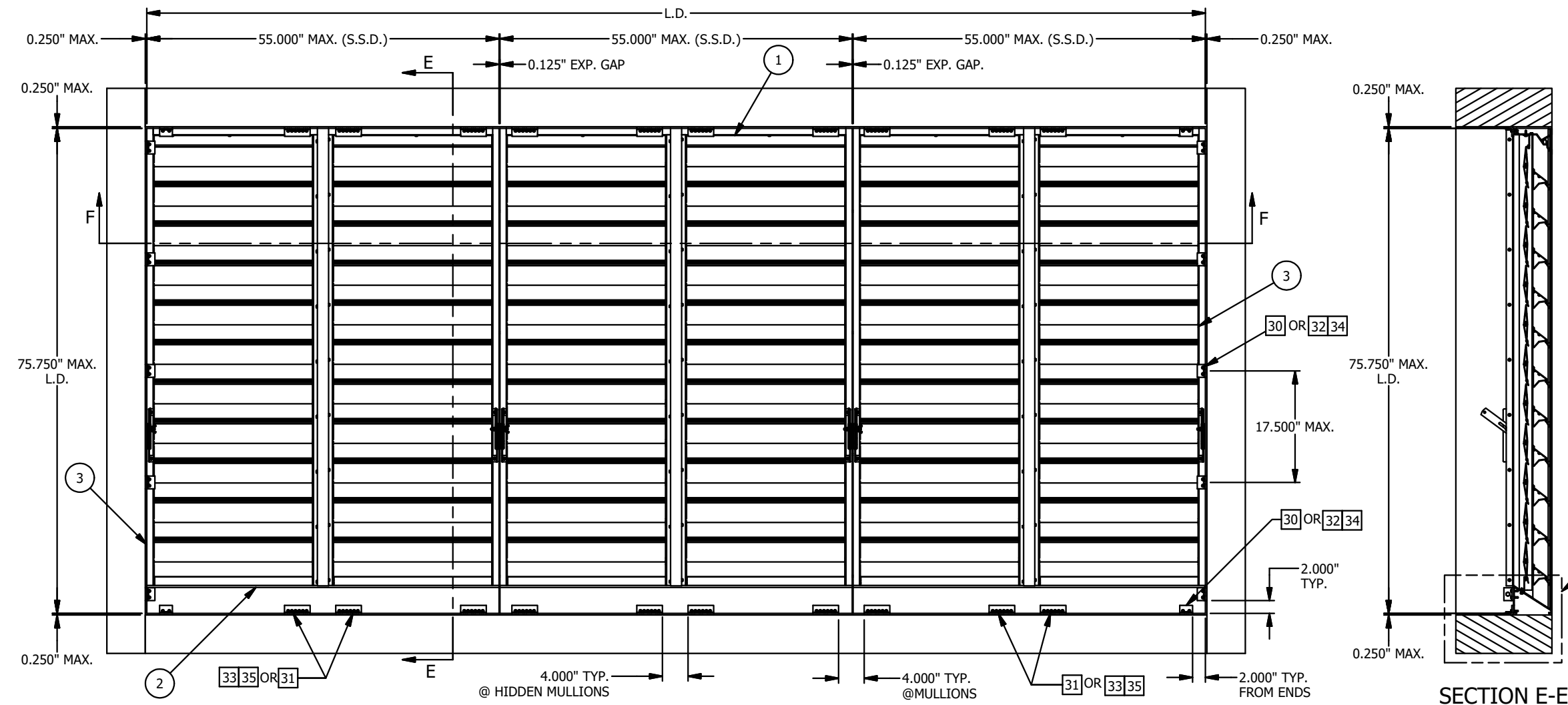


MELISSA M. MASSAR, P.E.
NO. 132158

REV	DESCRIPTION	BY	CHK	APVD	ECN	DATE
A	REV'D ENGINEER OF RECORD, UPDATED INFO.	NS	MMM	MMM		12/11/20
AUTHOR	NS	10/10/2018	3900 Doctor Greaves Road, Grandview, MO 64030 PROPRIETARY & CONFIDENTIAL			
CHECKED	MMM	10/22/2018				
APPROVED	MMM	10/22/2018				
MATERIAL EXTRUDED ALUMINUM		PRODUCT ELC6375DXD - EXTRUDED COMBINATION LOUVER				
TITLE BASIC LOUVER CONNECTION DETAILS						
SIZE B	DWG NO 60-022427-00B		REV A			
ECN	SCALE N.T.S.	INVENTOR		SHEET 3 OF 16		



MELISSA M. MASSAR, P.E.
NO. 132158

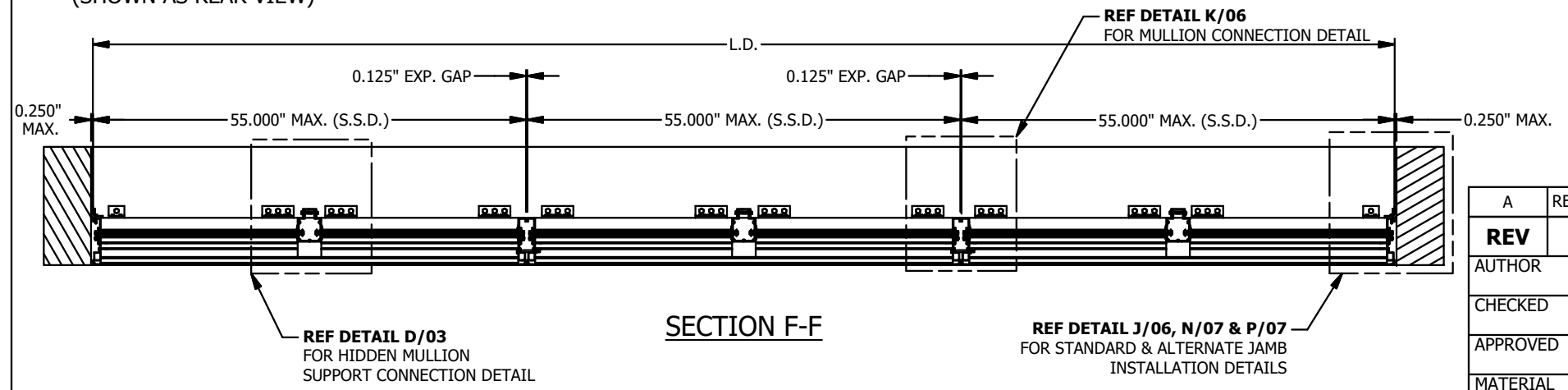


SECTION E-E

REF DETAIL H/06
FOR STANDARD HEAD/SILL
INSTALLATION DETAIL
REF DETAIL L/06 & M/06
FOR ALTERNATE HEAD/SILL
INSTALLATION DETAILS

ASSEMBLY 'A' & SECTION VIEWS

N.T.S.
MAX. SHIP SECTION : **55" W X 75.75" H** (REF SHEET 2 FOR SINGLE SECTION CONSTRUCTION)
(SHOWN AS REAR VIEW)

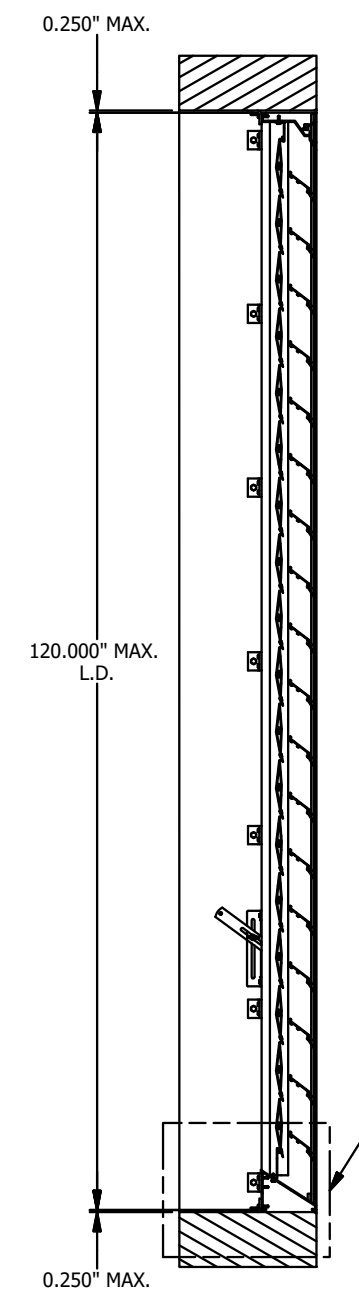
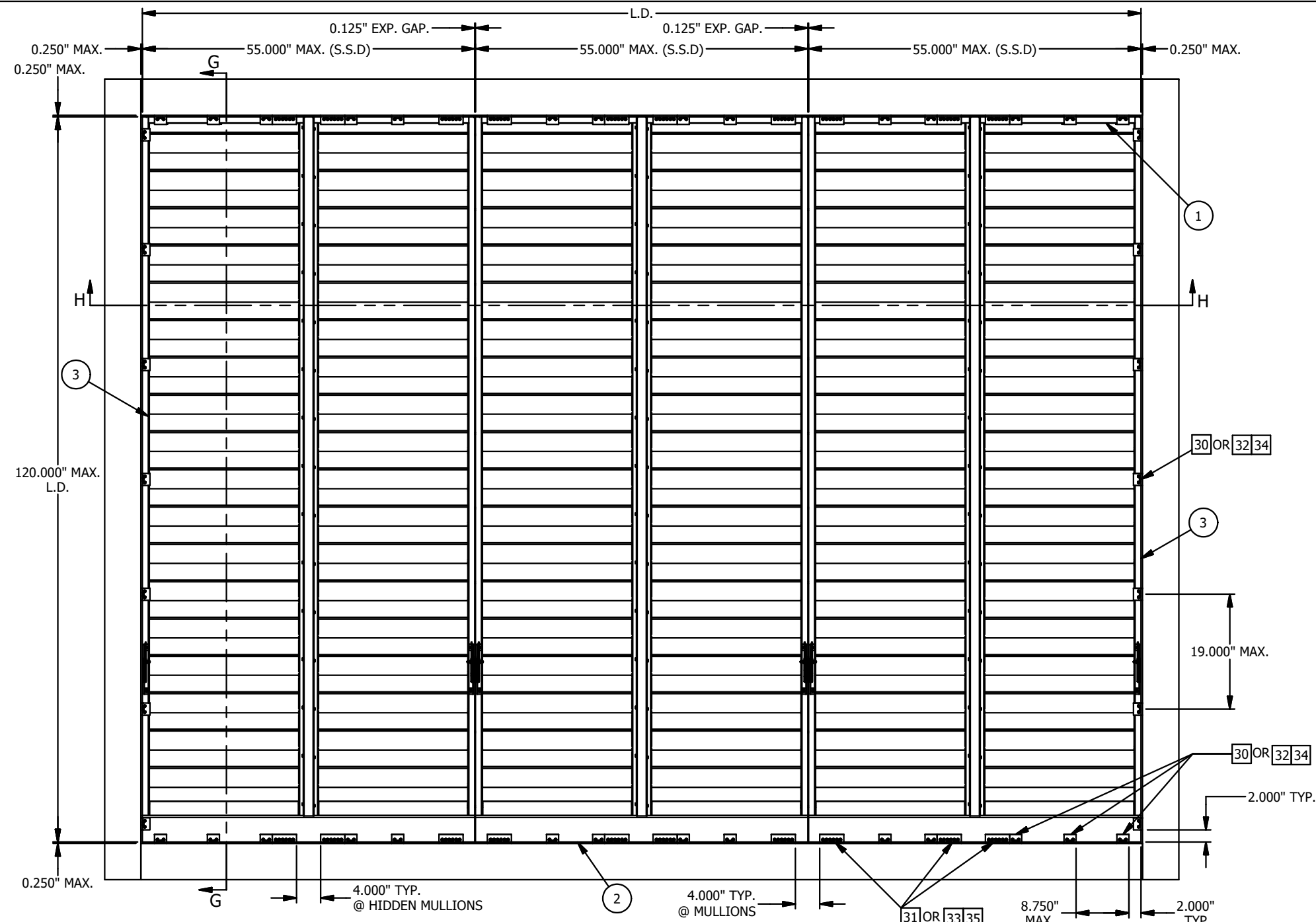


SECTION F-F

REF DETAIL D/03
FOR HIDDEN MULLION
SUPPORT CONNECTION DETAIL

REF DETAIL J/06, N/07 & P/07
FOR STANDARD & ALTERNATE JAMB
INSTALLATION DETAILS

A	REV'D ENGINEER OF RECORD, UPDATED INFO.	NS	MMM	MMM		12/11/20
REV	DESCRIPTION	BY	CHK	APVD	ECN	DATE
AUTHOR	NS	10/10/2018	 3900 Doctor Greaves Road, Grandview, MO 64030 PROPRIETARY & CONFIDENTIAL			
CHECKED	MMM	10/22/2018				
APPROVED	MMM	10/22/2018				
MATERIAL	EXTRUDED ALUMINUM	PRODUCT	ELC6375DXD - EXTRUDED COMBINATION LOUVER			
		TITLE	ASSEMBLY 'A' & SECTION VIEWS			
ECN		SIZE	B	DWG NO	60-022427-00B	REV
		SCALE	N.T.S.	INVENTOR		A
						SHEET 4 OF 16



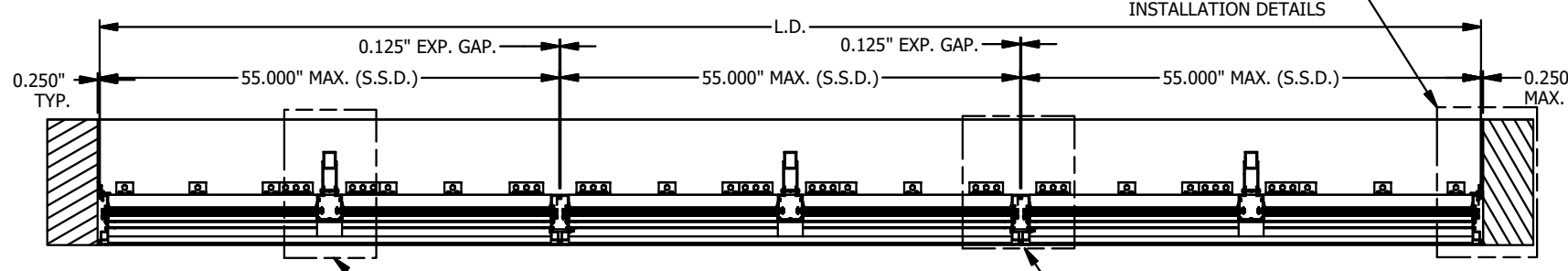
STATE OF TEXAS
 MELISSA MASSAR
 132158
 LICENSED PROFESSIONAL ENGINEER
Melissa Massar
 1/15/2021
 MELISSA M. MASSAR, P.E.
 NO. 132158

REF DETAIL H/06
 FOR STANDARD HEAD/SILL
 INSTALLATION DETAIL
 REF DETAIL L/06 & M/06
 FOR ALTERNATE HEAD/SILL
 INSTALLATION DETAIL

ASSEMBLY 'B' & SECTION VIEWS

N.T.S.
 MAX. SHIP SECTION : 55" W X 120" H (REF SHEET 2 FOR SINGLE SECTION CONSTRUCTION)
 (SHOWN AS REAR VIEW)

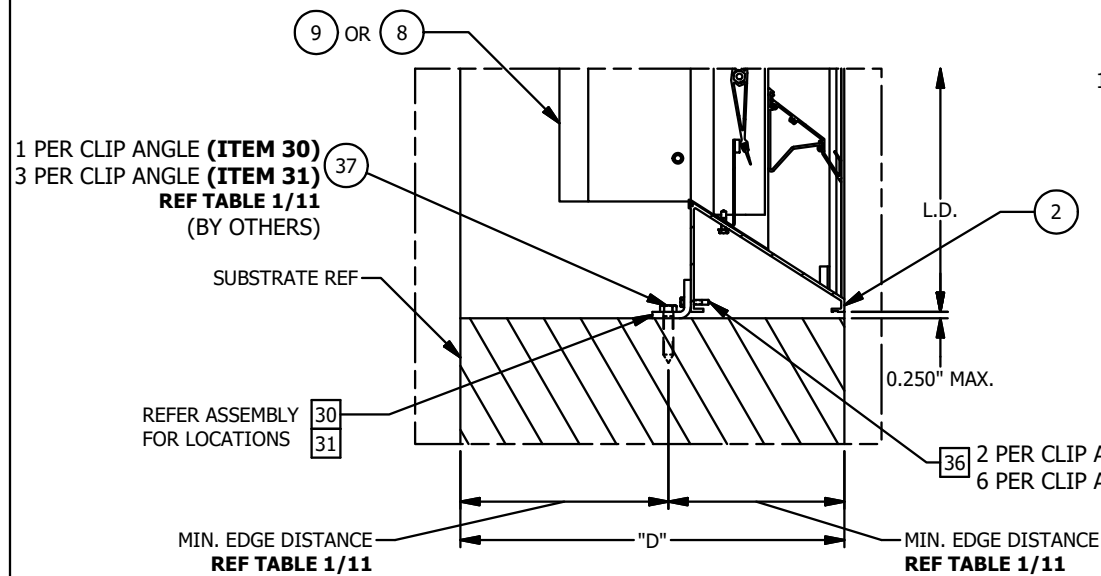
REF DETAIL J/06, N/07 & P/07
 FOR STANDARD & ALTERNATE JAMB
 INSTALLATION DETAILS



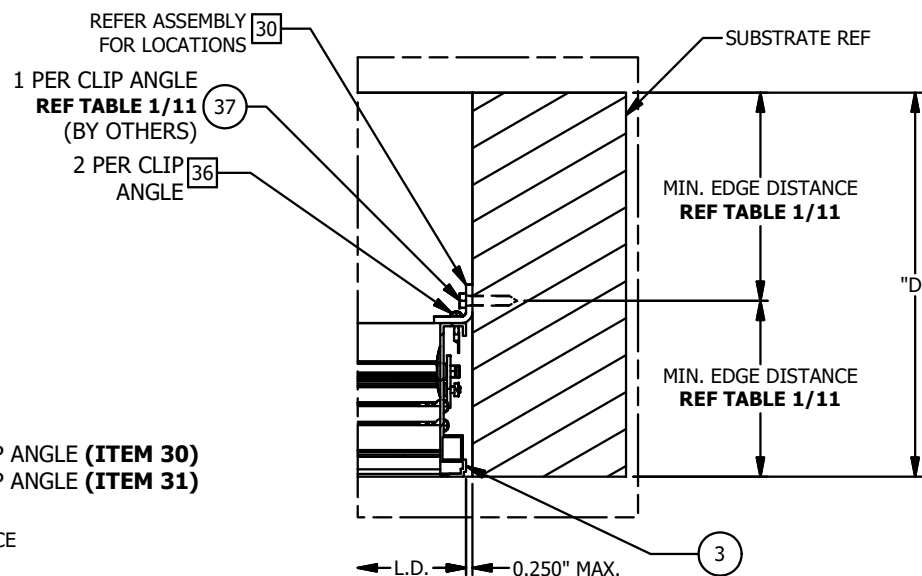
REF DETAIL A/03
 FOR HIDDEN MULLION SUPPORT
 CONNECTION DETAILS

REF DETAIL K/06
 FOR MULLION CONNECTION DETAIL

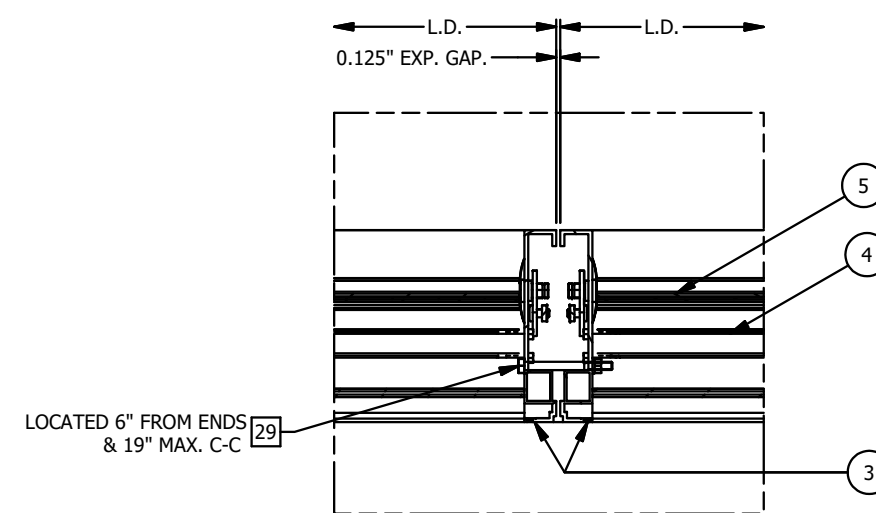
REV	DESCRIPTION	BY	CHK	APVD	ECN	DATE
A	REV'D ENGINEER OF RECORD, UPDATED INFO.	NS	MMM	MMM		12/11/20
AUTHOR	NS	10/10/2018	3900 Doctor Greaves Road, Grandview, MO 64030 PROPRIETARY & CONFIDENTIAL			
CHECKED	MMM	10/22/2018				
APPROVED	MMM	10/22/2018				
MATERIAL	EXTRUDED ALUMINUM	PRODUCT ELC6375DXD - EXTRUDED COMBINATION LOUVER				
TITLE ASSEMBLY 'B' & SECTION VIEWS						
SIZE B		DWG NO 60-022427-00B			REV A	
ECN		SCALE N.T.S.		INVENTOR		SHEET 5 OF 16



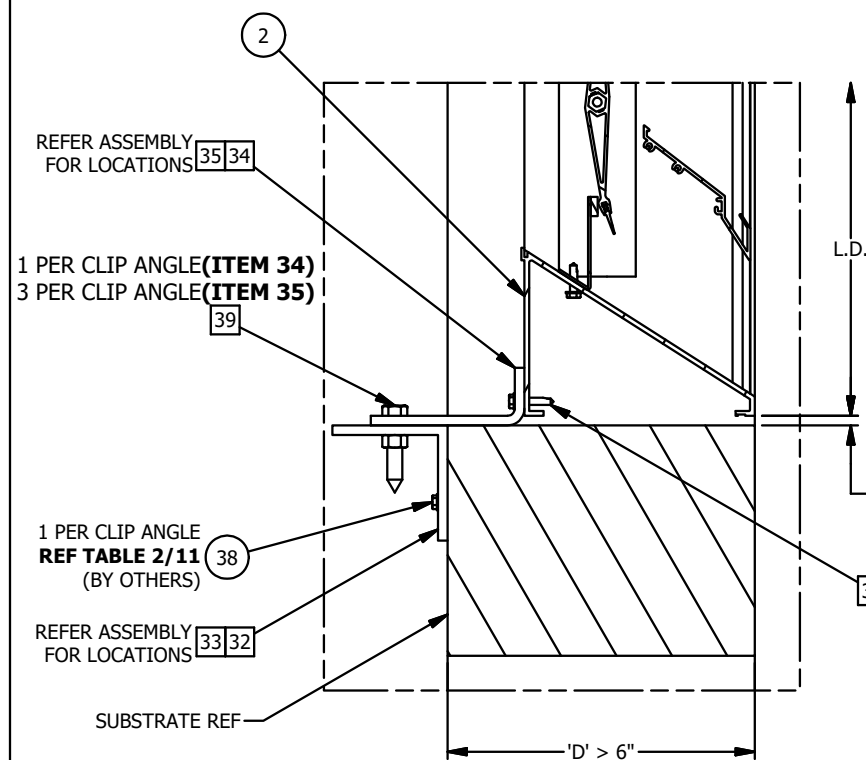
DETAIL H
STANDARD INSTALLATION DETAIL @ HEAD/SILL



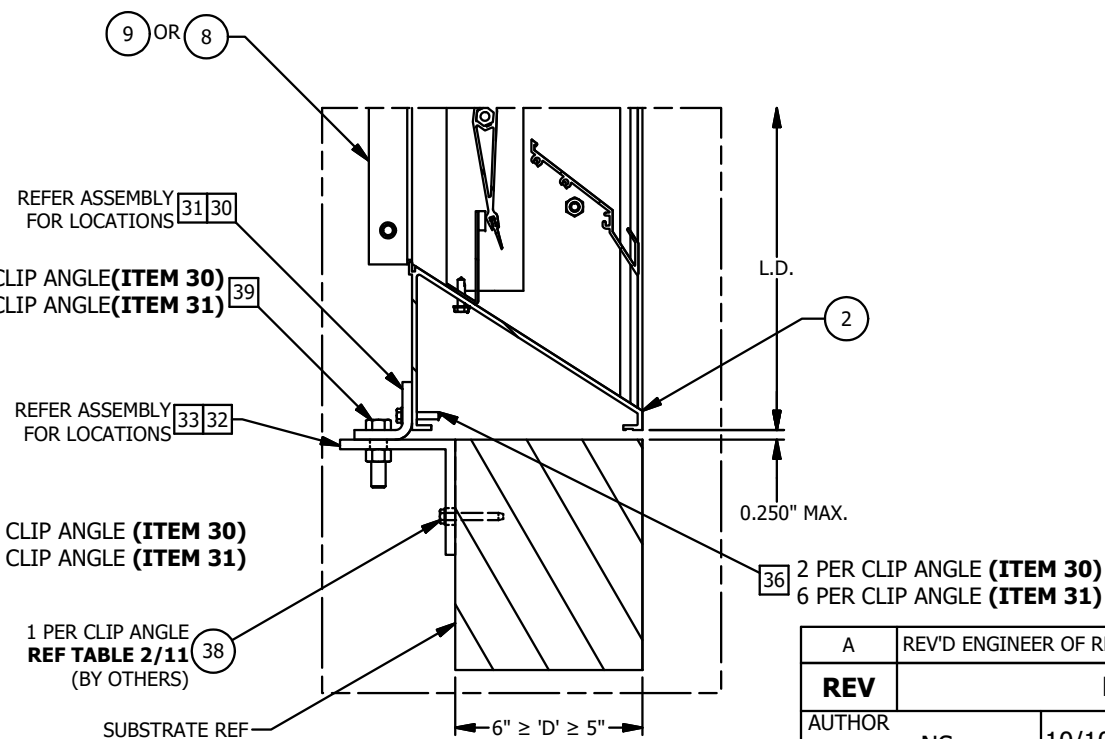
DETAIL J
STANDARD INSTALLATION DETAIL @ JAMB



DETAIL K
MULLION CONNECTION DETAIL
(CLIP ANGLES NOT SHOWN FOR CLARITY)



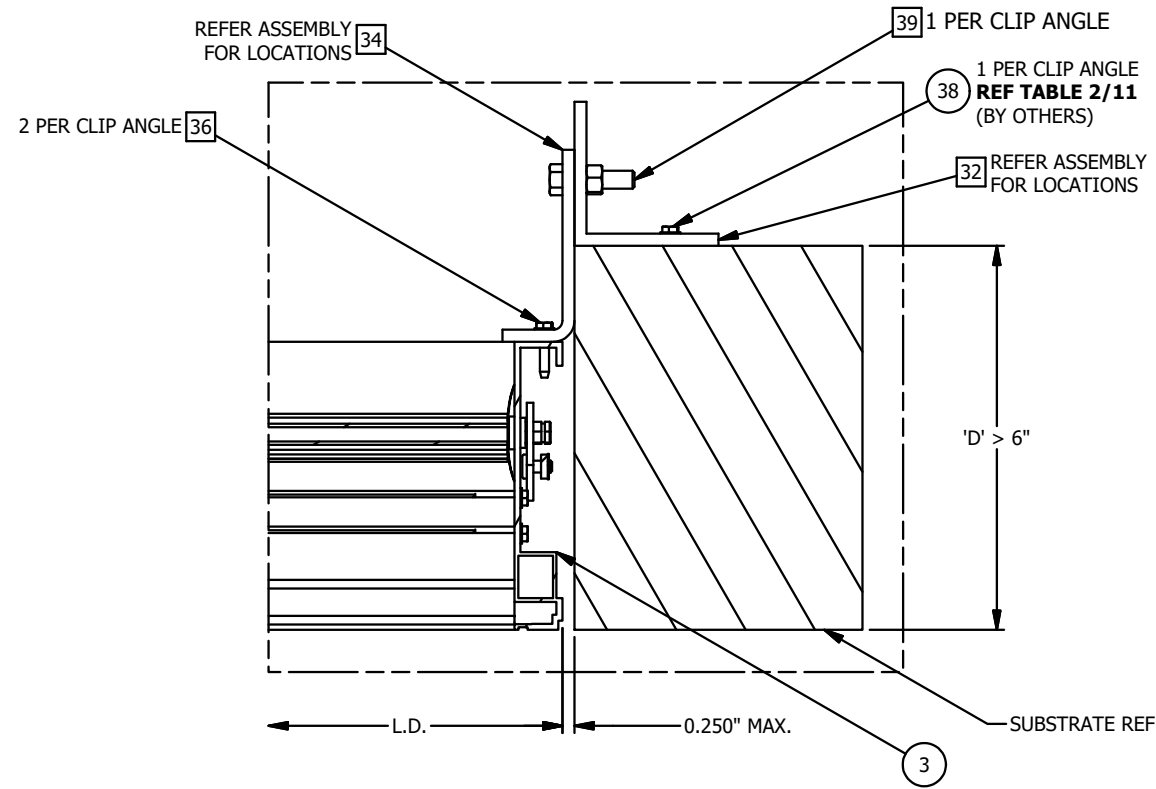
DETAIL L
ALTERNATE INSTALLATION DETAIL @ HEAD/SILL
USED WHEN MIN. EDGE DISTANCE PER TABLE 1/11
CANNOT BE MET



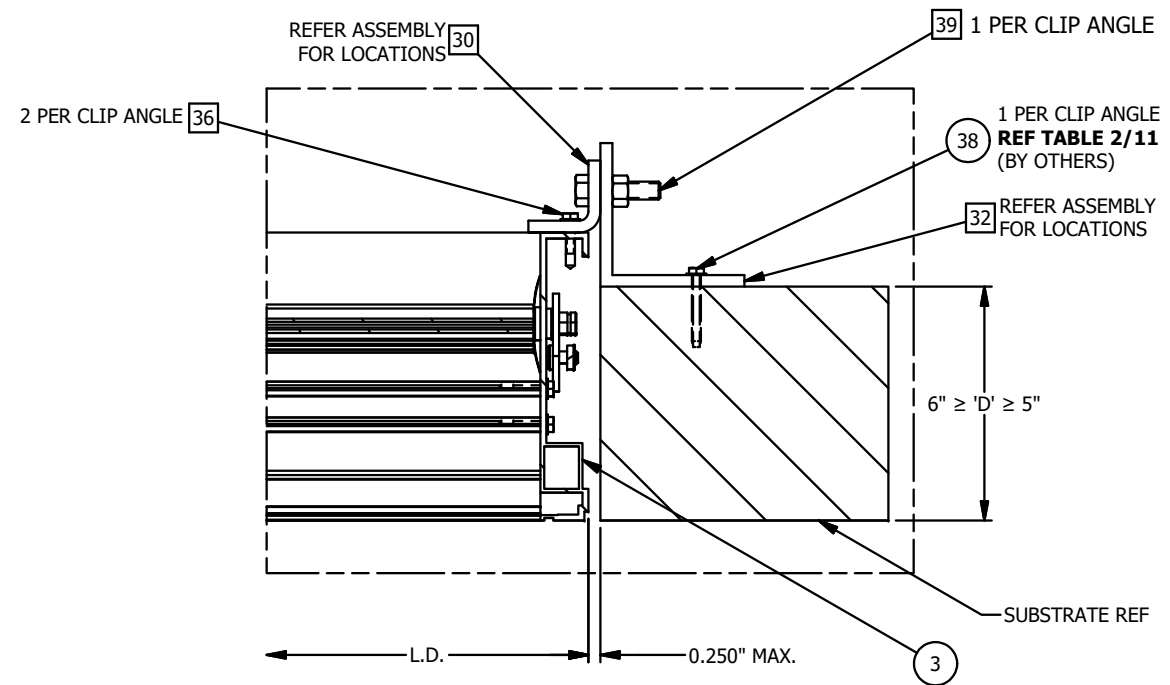
DETAIL M
ALTERNATE INSTALLATION DETAIL @ HEAD/SILL
USED WHEN MIN. EDGE DISTANCE PER TABLE 1/11
CANNOT BE MET

MELISSA M. MASSAR, P.E.
NO. 132158

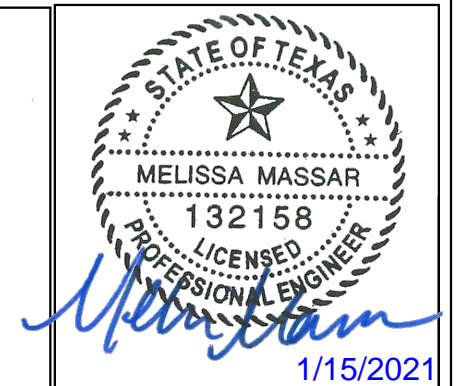
REV	DESCRIPTION	BY	CHK	APVD	ECN	DATE
A	REV'D ENGINEER OF RECORD, UPDATED INFO.	NS	MMM	MMM		12/11/20
AUTHOR	NS	10/10/2018	3900 Doctor Greaves Road, Grandview, MO 64030 PROPRIETARY & CONFIDENTIAL			
CHECKED	MMM	10/22/2018				
APPROVED	MMM	10/22/2018				
MATERIAL	EXTRUDED ALUMINUM	PRODUCT ELC6375DXD - EXTRUDED COMBINATION LOUVER				
TITLE STANDARD & ALTERNATE INSTALLATION DETAILS						
SIZE	B	DWG NO	60-022427-00B		REV	A
ECN		SCALE	N.T.S.		INVENTOR	SHEET 6 OF 16




DETAIL N
 ALTERNATE INSTALLATION DETAIL @ JAMB
 USED WHEN MIN. EDGE DISTANCE PER TABLE 1/11
 CANNOT BE MET

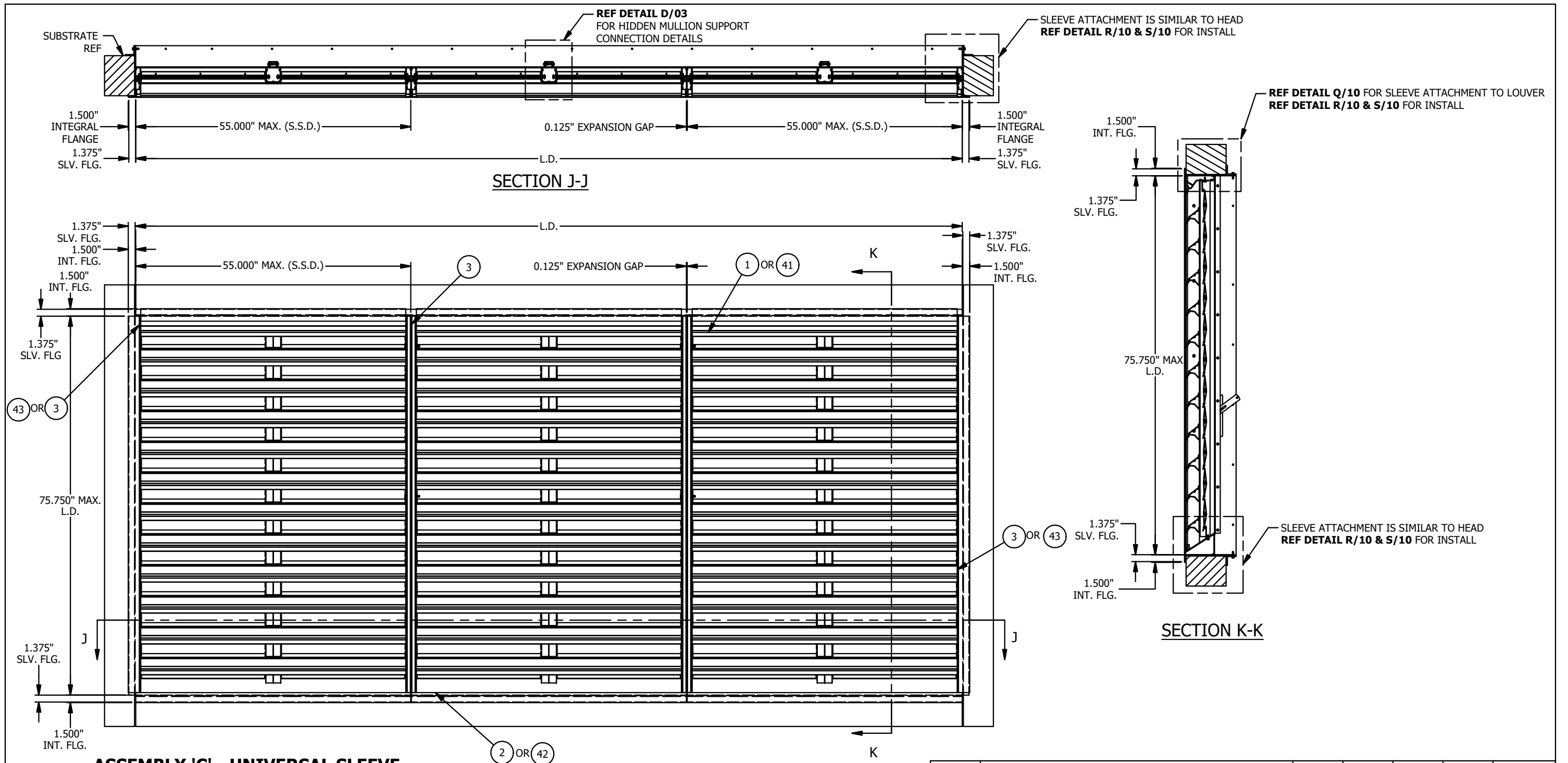


DETAIL P
 ALTERNATE INSTALLATION DETAIL @ JAMB
 USED WHEN MIN. EDGE DISTANCE PER TABLE 1/11
 CANNOT BE MET

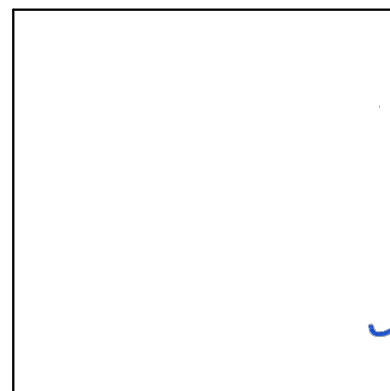


MELISSA M. MASSAR, P.E.
 NO. 132158

A	REV'D ENGINEER OF RECORD, UPDATED INFO.	NS	MMM	MMM		12/11/20
REV	DESCRIPTION	BY	CHK	APVD	ECN	DATE
AUTHOR	NS	10/10/2018	 3900 Doctor Greaves Road, Grandview, MO 64030 PROPRIETARY & CONFIDENTIAL			
CHECKED	MMM	10/22/2018				
APPROVED	MMM	10/22/2018				
MATERIAL	EXTRUDED ALUMINUM	PRODUCT	ELC6375DXD - EXTRUDED COMBINATION LOUVER			
		TITLE	ALTERNATE INSTALLATION DETAILS			
		SIZE	B	DWG NO	60-022427-00B	REV A
ECN		SCALE	N.T.S.	INVENTOR	SHEET 7 OF 16	



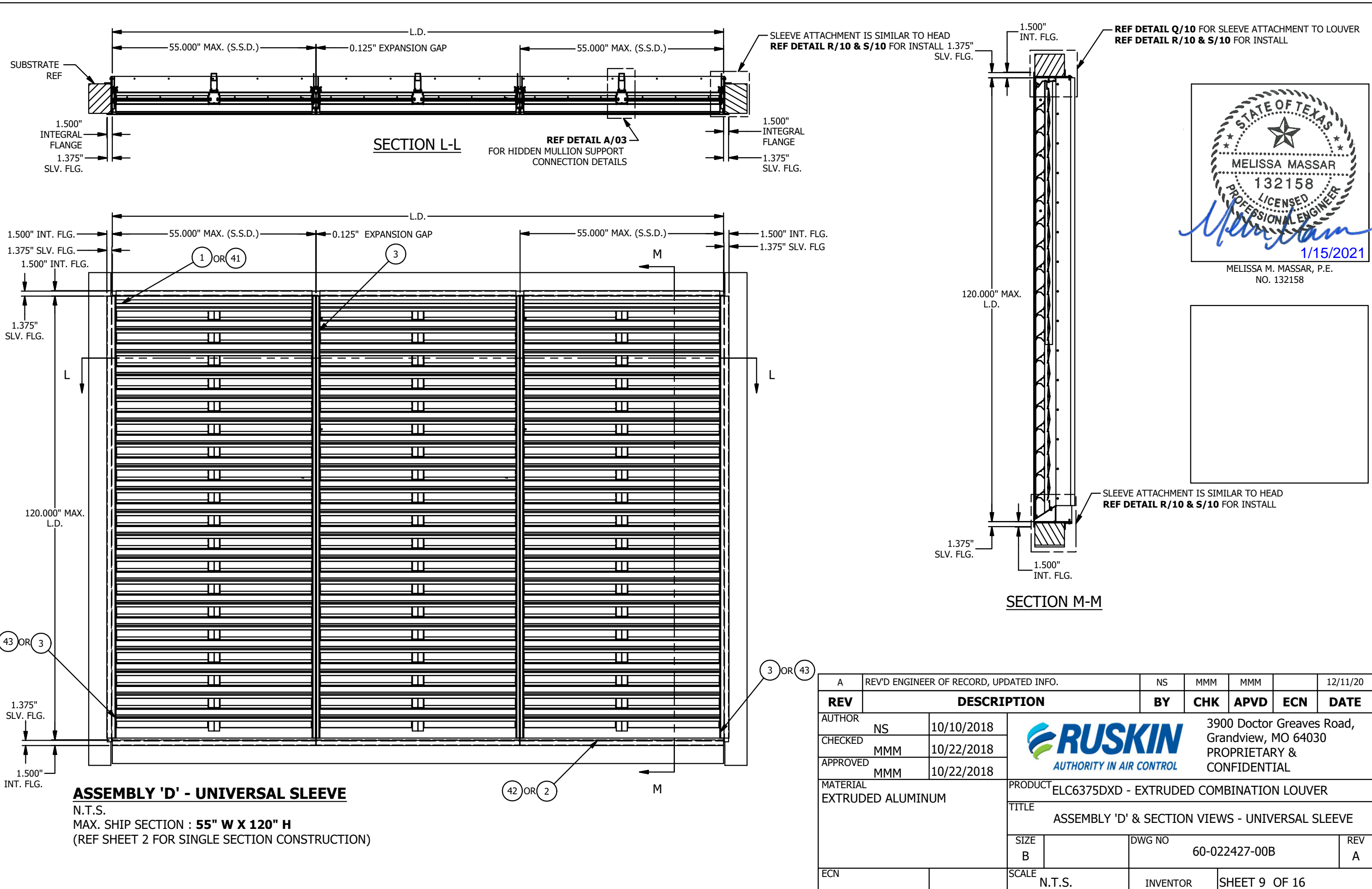
ASSEMBLY 'C' - UNIVERSAL SLEEVE
 N.T.S.
 MAX. SHIP SECTION : **55" W X 75.75" H**
 (REF SHEET 2 FOR SINGLE SECTION CONSTRUCTION)



Melissa Massar
 1/15/2021

MELISSA M. MASSAR, P.E.
 NO. 132158

A	REV'D ENGINEER OF RECORD, UPDATED INFO.	NS	MMM	MMM		12/11/20
REV	DESCRIPTION	BY	CHK	APVD	ECN	DATE
AUTHOR	NS	10/10/2018	 3900 Doctor Greaves Road, Grandview, MO 64030 PROPRIETARY & CONFIDENTIAL			
CHECKED	MMM	10/22/2018				
APPROVED	MMM	10/22/2018				
MATERIAL	EXTRUDED ALUMINUM	PRODUCT	ELC6375DXD - EXTRUDED COMBINATION LOUVER			
		TITLE	ASSEMBLY 'C' & SECTION VIEWS - UNIVERSAL SLEEVE			
SIZE	B	DWG NO	60-022427-00B		REV	A
SCALE	N.T.S.	INVENTOR	SHEET 8 OF 16			

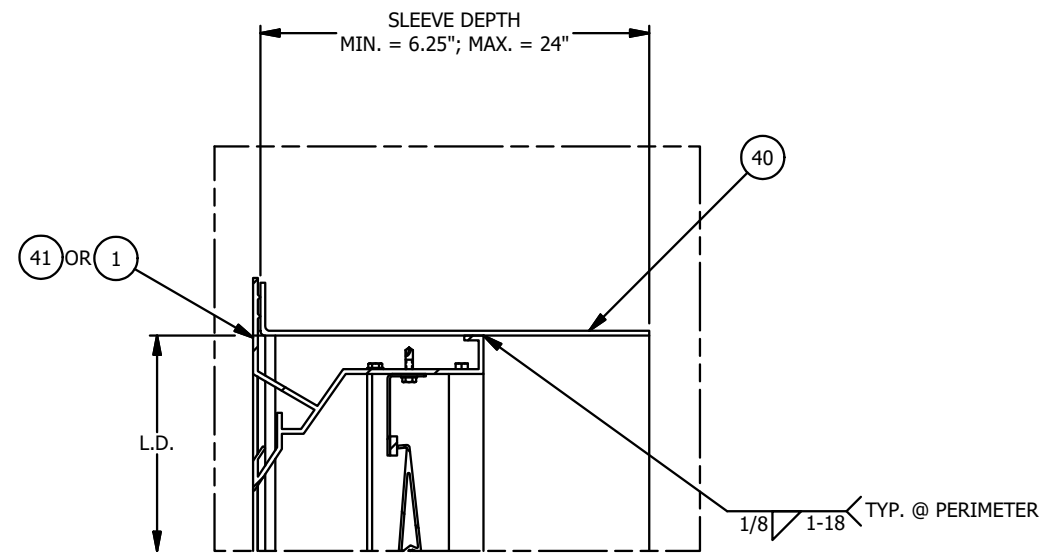


ASSEMBLY 'D' - UNIVERSAL SLEEVE
 N.T.S.
 MAX. SHIP SECTION : **55" W X 120" H**
 (REF SHEET 2 FOR SINGLE SECTION CONSTRUCTION)

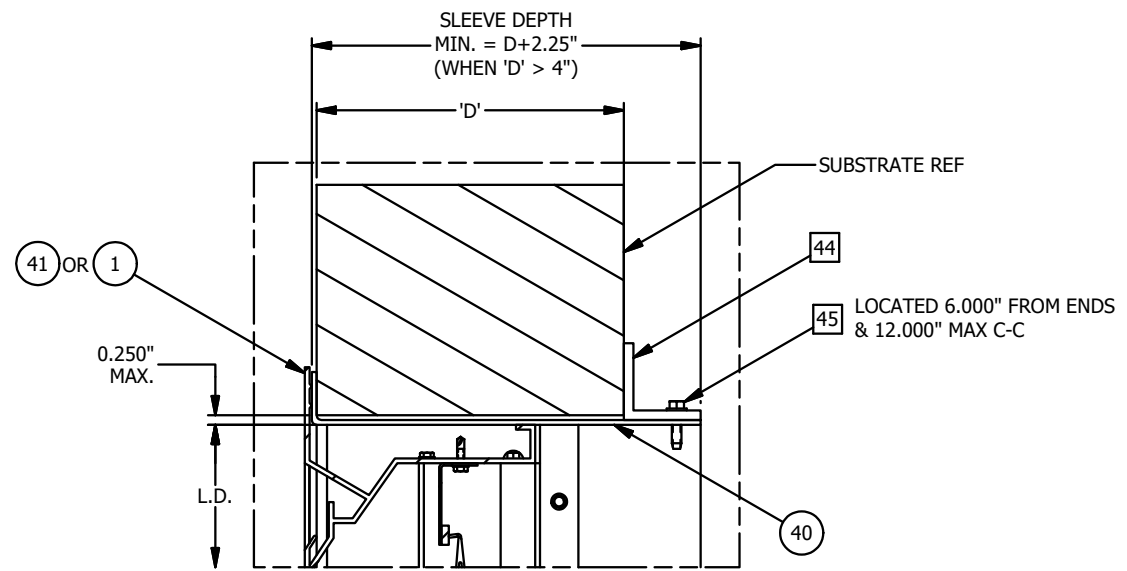
REV	DESCRIPTION	BY	CHK	APVD	ECN	DATE
A	REV'D ENGINEER OF RECORD, UPDATED INFO.	NS	MMM	MMM		12/11/20
AUTHOR	NS	10/10/2018	3900 Doctor Greaves Road, Grandview, MO 64030 PROPRIETARY & CONFIDENTIAL			
CHECKED	MMM	10/22/2018				
APPROVED	MMM	10/22/2018				
MATERIAL	EXTRUDED ALUMINUM	PRODUCT ELC6375DXD - EXTRUDED COMBINATION LOUVER				
TITLE ASSEMBLY 'D' & SECTION VIEWS - UNIVERSAL SLEEVE						
SIZE B		DWG NO 60-022427-00B			REV A	
ECN		SCALE N.T.S.		INVENTOR		SHEET 9 OF 16



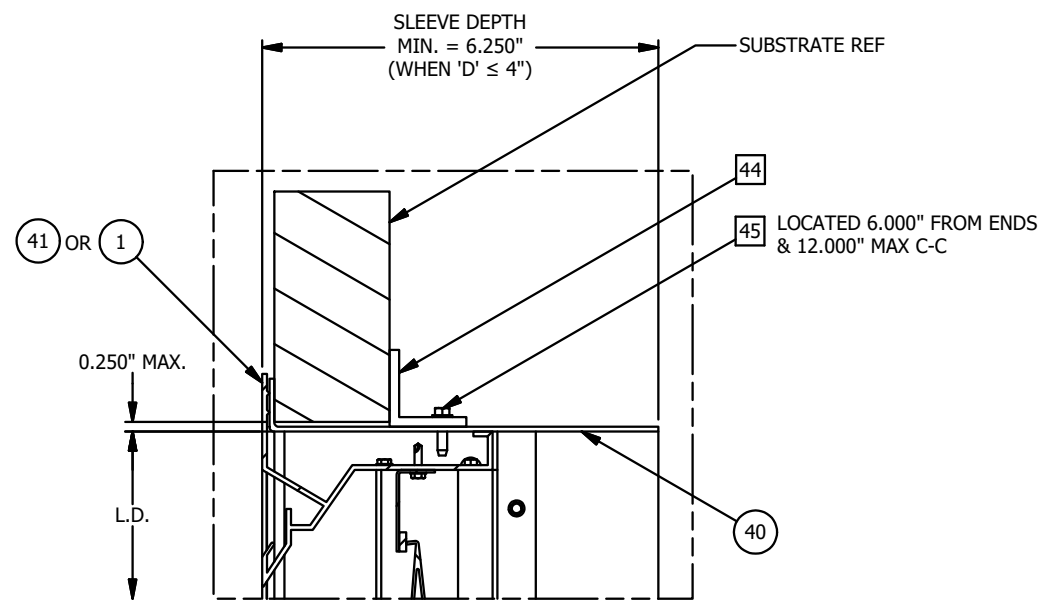
MELISSA M. MASSAR, P.E.
NO. 132158



DETAIL Q
UNIVERSAL SLEEVE WELDING DETAIL
(TYP. AT PERIMETER)



DETAIL R
UNIVERSAL SLEEVE CONNECTION DETAIL
(TYP. AT PERIMETER)



DETAIL S
UNIVERSAL SLEEVE CONNECTION DETAIL
(TYP. AT PERIMETER)

A	REV'D ENGINEER OF RECORD, UPDATED INFO.	NS	MMM	MMM		12/11/20
REV	DESCRIPTION	BY	CHK	APVD	ECN	DATE
AUTHOR	NS	10/10/2018	 3900 Doctor Greaves Road, Grandview, MO 64030 PROPRIETARY & CONFIDENTIAL			
CHECKED	MMM	10/22/2018				
APPROVED	MMM	10/22/2018				
MATERIAL	EXTRUDED ALUMINUM	PRODUCT	ELC6375DXD - EXTRUDED COMBINATION LOUVER			
		TITLE	UNIVERSAL SLEEVE ATTACHMENT DETAILS			
		SIZE	DWG NO	REV		
		B	60-022427-00B	A		
ECN		SCALE	INVENTOR	SHEET 10 OF 16		
		N.T.S.				

TABLE 01 - STANDARD CLIP ANGLE INSTALLATION SUBSTRATE FASTENER (ITEM 37) (BY OTHERS)

SUBSTRATE TYPE	MIN. SUBSTRATE REQUIREMENTS	FASTENER TYPE	MIN. EMBEDMENT	MIN. EDGE DISTANCE
WOOD	3" THICK, 0.42 SPECIFIC GRAVITY	3/8" DIA. BOLT W/NUT, MIN. A307 GRADE A	3 THREADS BEYOND NUT	2"
		3/8" DIA. LAG SCREW, 2" LONG, MIN. A307 GRADE A	1 3/4"	2"
STEEL	16 GA, 45 KSI TENSILE STRENGTH, 33 KSI YIELD STRENGTH	3/8" DIA. BOLT W/NUT, MIN. A307 GRADE A	3 THREADS BEYOND NUT	3/4"
		3/8" SELF TAPPING SCREW, CARBON STEEL	3 THREADS BEYOND SUBSTRATE	3/4"
CONCRETE	2500 PSI COMP. STRENGTH, UNCRACKED	1/4" DIA. HILTI KWIK BOLT 3, CARBON STEEL, W/WASHER	1 1/2"	3"

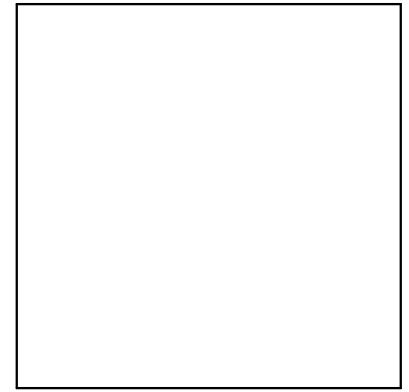
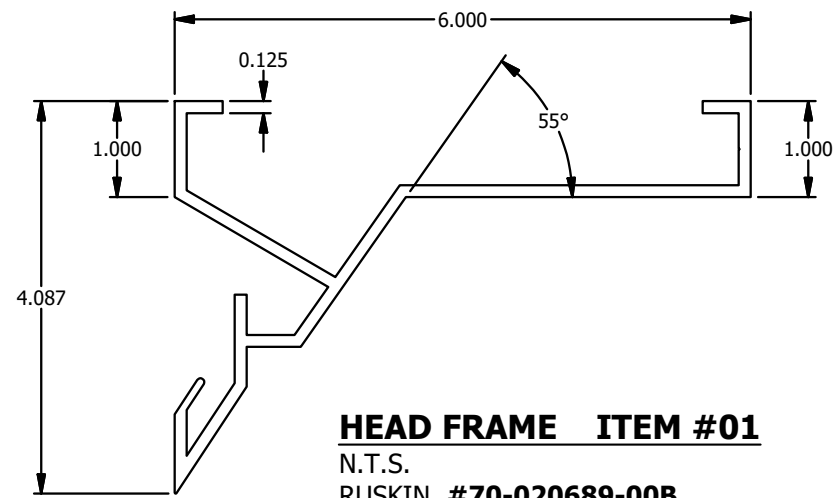


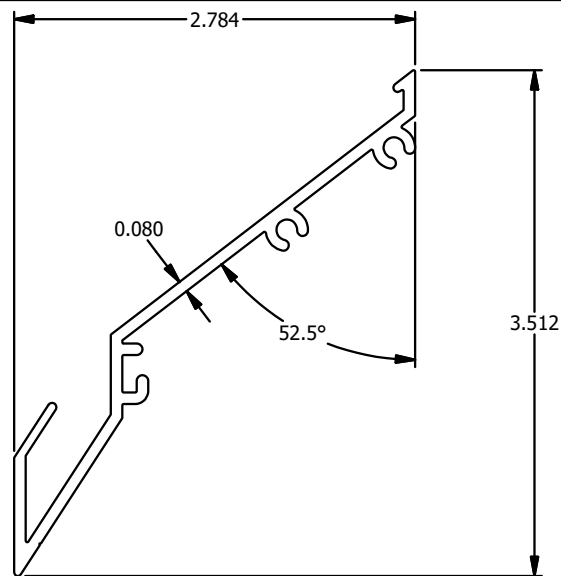
TABLE 02 - DOUBLE CLIP ANGLE INSTALLATION SUBSTRATE FASTENER (ITEM 38) (BY OTHERS)

SUBSTRATE TYPE	MIN. SUBSTRATE REQUIREMENTS	FASTENER TYPE	MIN. EMBEDMENT	MIN. WALL DEPTH
CONCRETE	2500 PSI COMP. STRENGTH, UNCRACKED	3/8" DIA. DEWALT SCREW-BOLT + SCREW ANCHOR, CARBON STEEL	3 1/4"	5"
GROUT FILLED CMU	ASTM C-90 BLOCK, 1500 PSI GROUT COMP. STRENGTH	3/8" DIA. DEWALT SCREW-BOLT + SCREW ANCHOR, CARBON STEEL	3 1/4"	6" NOM. (5.625" ACT.)

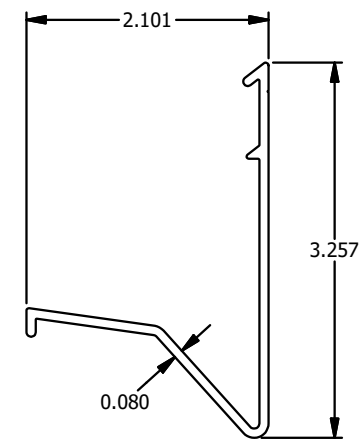
A	REV'D ENGINEER OF RECORD, UPDATED INFO.	NS	MMM	MMM		12/11/20
REV	DESCRIPTION	BY	CHK	APVD	ECN	DATE
AUTHOR	NS	10/10/2018	3900 Doctor Greaves Road, Grandview, MO 64030 PROPRIETARY & CONFIDENTIAL			
CHECKED	MMM	10/22/2018				
APPROVED	MMM	10/22/2018				
MATERIAL	EXTRUDED ALUMINUM	PRODUCT	ELC6375DXD - EXTRUDED COMBINATION LOUVER			
		TITLE	SUBSTRATE FASTENER TABLES			
SIZE	B	DWG NO	60-022427-00B		REV	A
ECN		SCALE	N.T.S.		INVENTOR	SHEET 11 OF 16



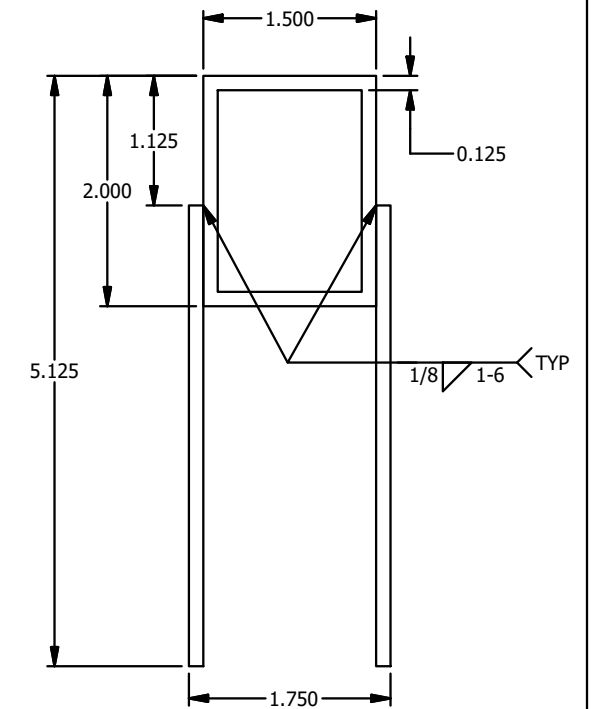
HEAD FRAME ITEM #01
N.T.S.
RUSKIN #70-020689-00B



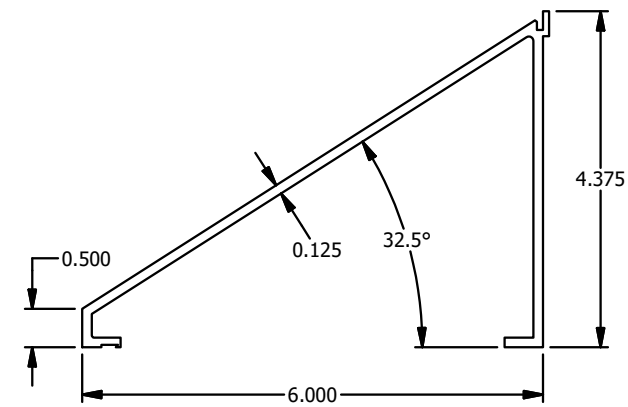
DRAINABLE FIXED BLADE ITEM #04
N.T.S.
RUSKIN #70-021718-00B



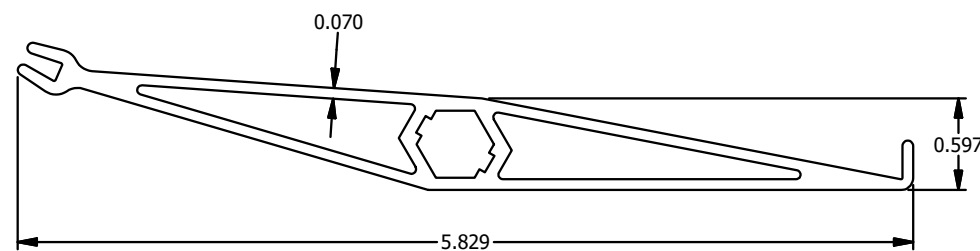
BLADE BRACE ITEM #07
N.T.S.
RUSKIN #70-021719-00B



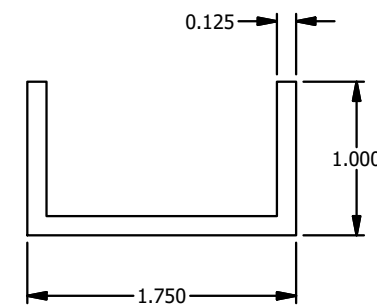
MULLION SUPPORT ITEM #09
N.T.S.



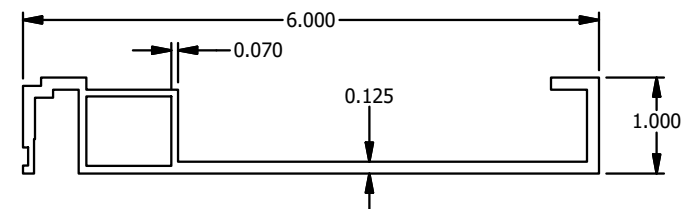
SILL FRAME ITEM #02
N.T.S.
RUSKIN #70-021130-00B



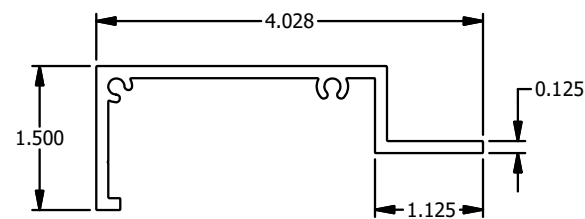
ADJUSTABLE BLADE ITEM #05
N.T.S.
RUSKIN #70-021027-00B



MULLION SUPPORT CHANNEL ITEM #08
N.T.S.
RUSKIN #70-021797-00B




JAMB FRAME ITEM #03
N.T.S.
RUSKIN #70-020691-00B

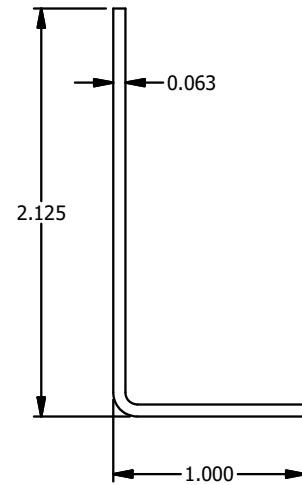


HIDDEN MULLION ITEM #06
N.T.S.
RUSKIN #70-021791-00B

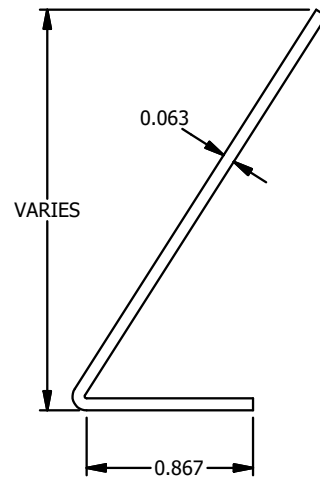


MELISSA M. MASSAR, P.E.
NO. 132158

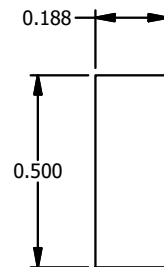
REV	DESCRIPTION	BY	CHK	APVD	ECN	DATE
A	REV'D ENGINEER OF RECORD, UPDATED INFO.	NS	MMM	MMM		12/11/20
AUTHOR	NS	10/10/2018	 3900 Doctor Greaves Road, Grandview, MO 64030 PROPRIETARY & CONFIDENTIAL			
CHECKED	MMM	10/22/2018				
APPROVED	MMM	10/22/2018				
MATERIAL EXTRUDED ALUMINUM		PRODUCT ELC6375DXD - EXTRUDED COMBINATION LOUVER				
TITLE ELC6375DXD - PARTS						
SIZE B		DWG NO 60-022427-00B			REV A	
ECN		SCALE N.T.S.		INVENTOR		SHEET 12 OF 16



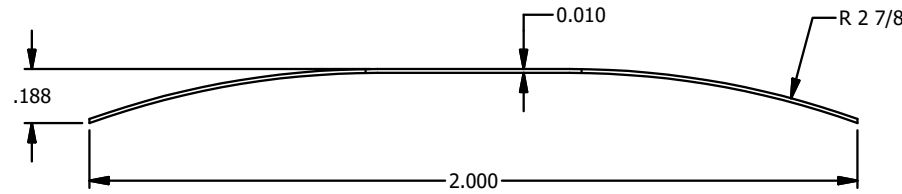
TOP BLADE STOP ITEM #10
N.T.S.
RUSKIN #70-007611-00B



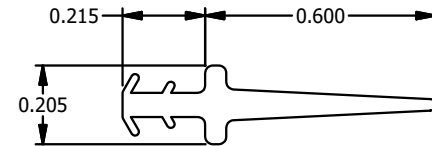
BOTTOM BLADE STOP ITEM #11
N.T.S.
RUSKIN #70-022225-00B



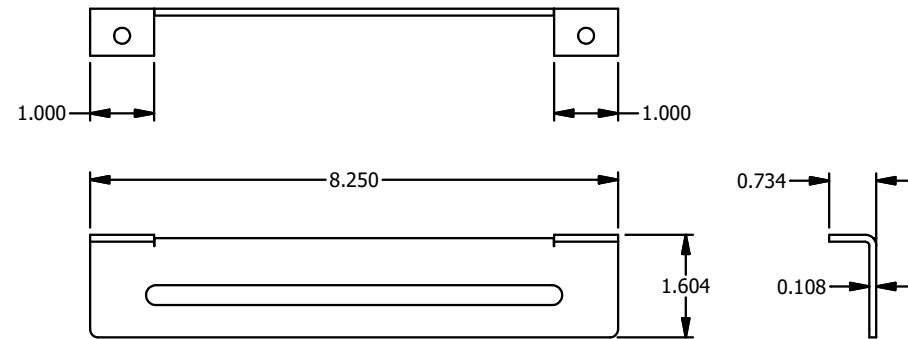
BLADE STOP SEAL ITEM #12
N.T.S.
RUSKIN #88-020135-00B



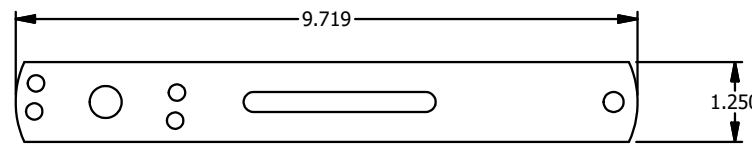
JAMB SEAL ITEM #13
N.T.S.
RUSKIN #80-020258-00B



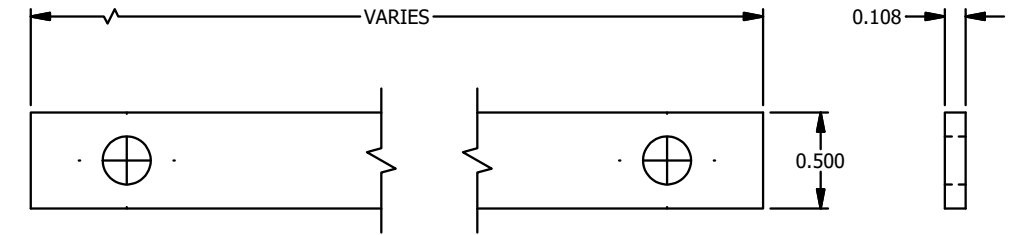
BLADE SEAL ITEM #14
N.T.S.
RUSKIN #80-015698-00B



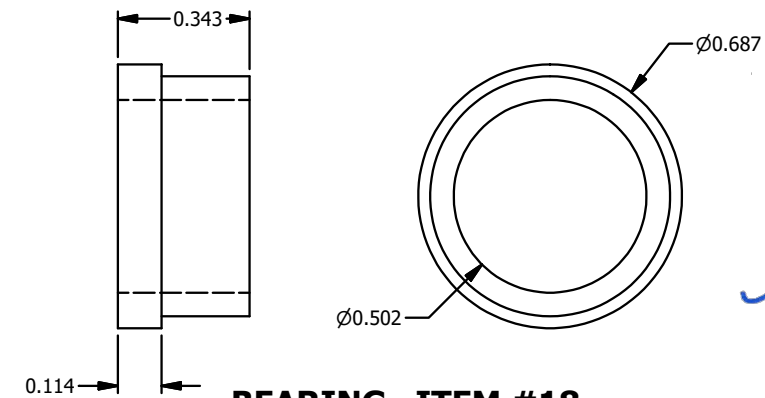
HAND QUADRANT PLATE ITEM #15
N.T.S.
RUSKIN #73-003023-01B



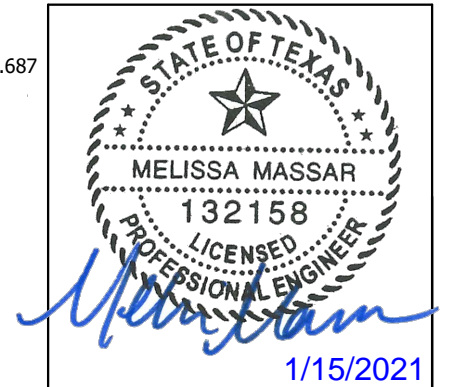
HAND QUADRANT ARM ITEM #16
N.T.S.
RUSKIN #73-003021-01B



TIE-BAR ITEM #17
N.T.S.

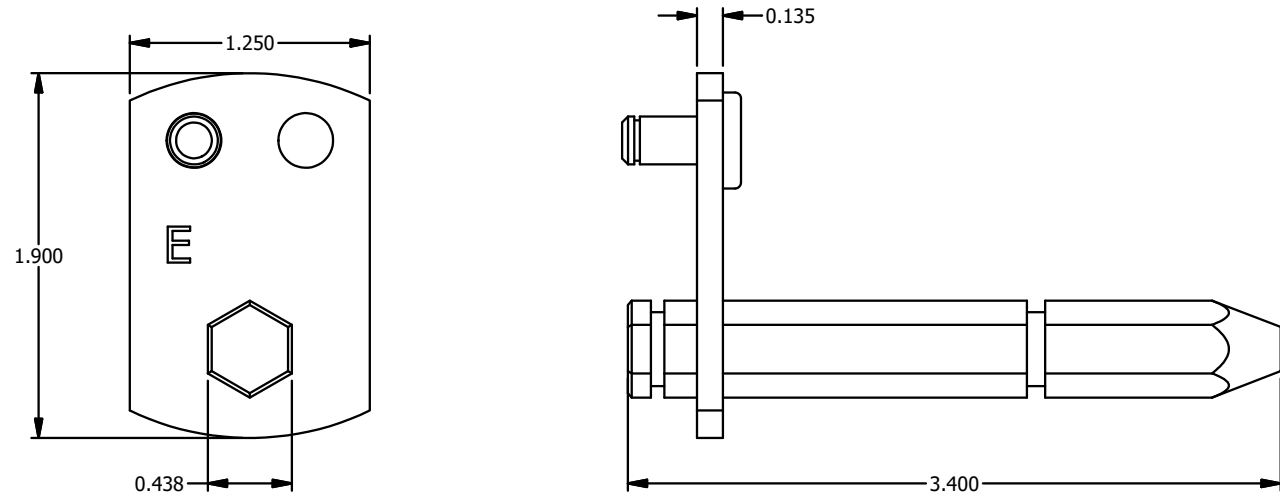


BEARING ITEM #18
N.T.S.
RUSKIN# 79-002082-03B



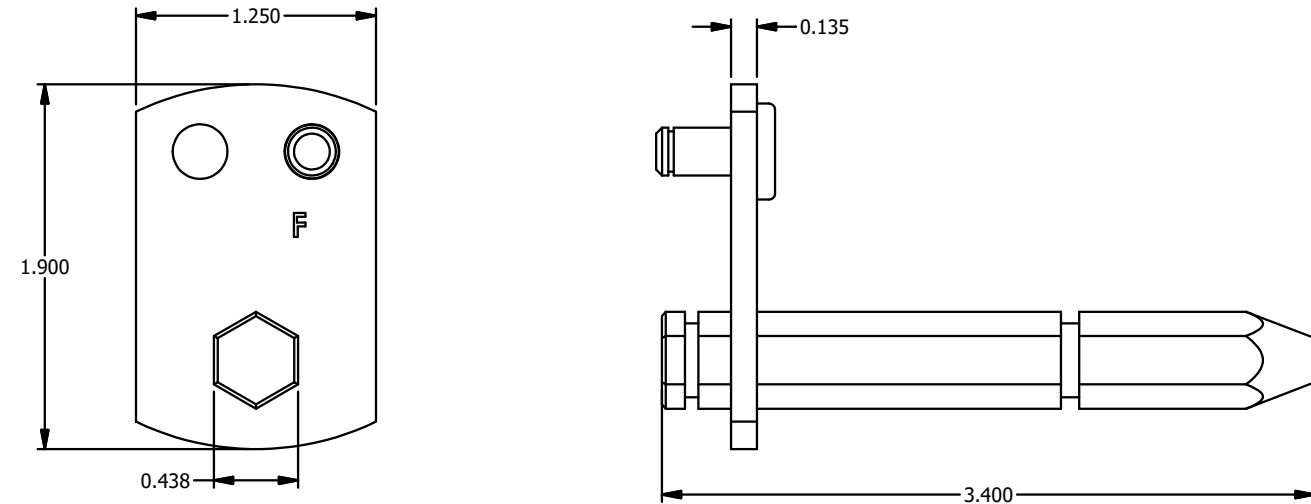
MELISSA M. MASSAR, P.E.
NO. 132158

A	REV'D ENGINEER OF RECORD, UPDATED INFO.	NS	MMM	MMM		12/11/20
REV	DESCRIPTION	BY	CHK	APVD	ECN	DATE
AUTHOR	NS	10/10/2018	 3900 Doctor Greaves Road, Grandview, MO 64030 PROPRIETARY & CONFIDENTIAL			
CHECKED	MMM	10/22/2018				
APPROVED	MMM	10/22/2018				
MATERIAL	EXTRUDED ALUMINUM	PRODUCT	ELC6375DXD - EXTRUDED COMBINATION LOUVER			
		TITLE	ELC6375DXD - PARTS			
		SIZE	B	DWG NO	60-022427-00B	REV
						A
ECN		SCALE	N.T.S.		INVENTOR	SHEET 13 OF 16



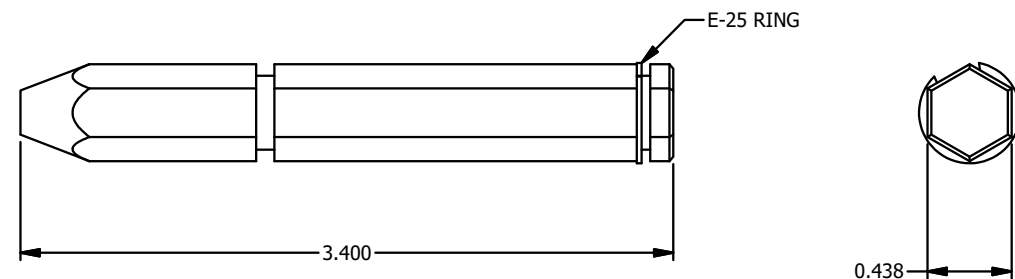
E-SIDE LINKAGE CRANK ARM ASSEMBLY ITEM #19

N.T.S.
RUSKIN# 77-000854-01B



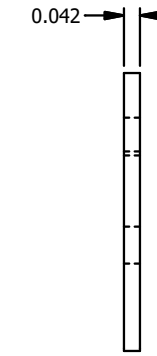
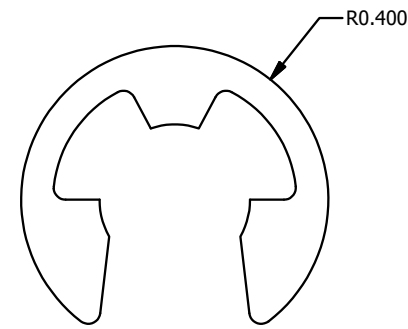
F-SIDE LINKAGE CRANK ARM ASSEMBLY ITEM #20

N.T.S.
RUSKIN# 77-002008-01B



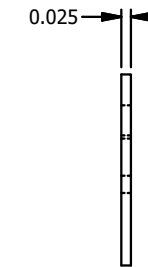
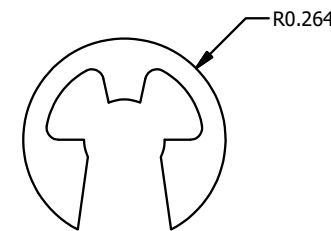
IDLER DRIVE AXLE ITEM #21

N.T.S.
RUSKIN# 77-007686-00A



RETAINING RING: TRUARC E-50 ITEM #22

N.T.S.
RUSKIN# 88-020103-01B

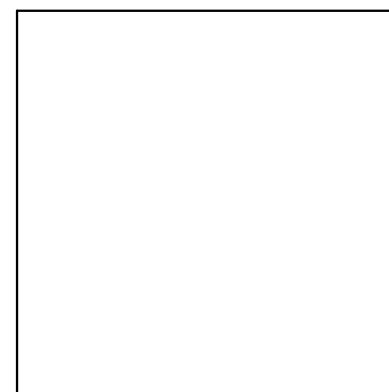
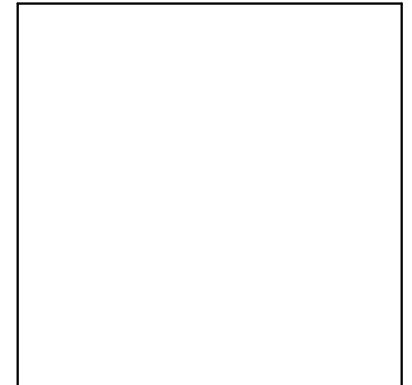


RETAINING RING: TRUARC E-25 ITEM #23

N.T.S.
RUSKIN# 88-020099-01A

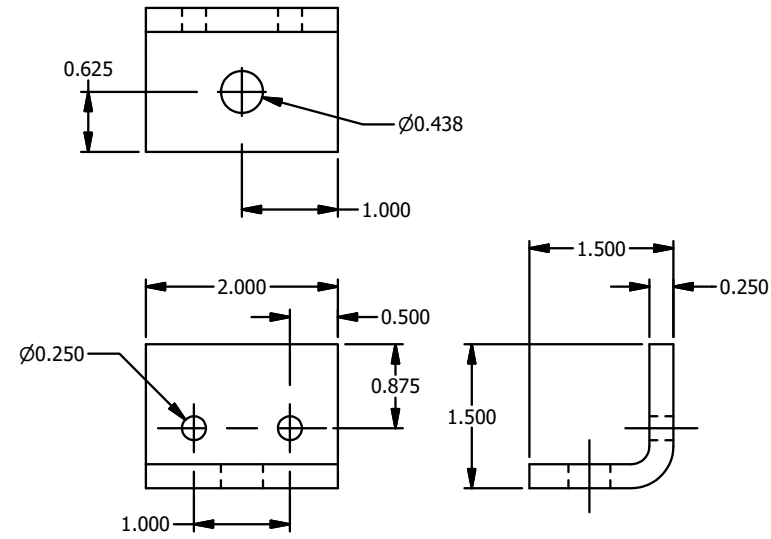


MELISSA M. MASSAR, P.E.
NO. 132158

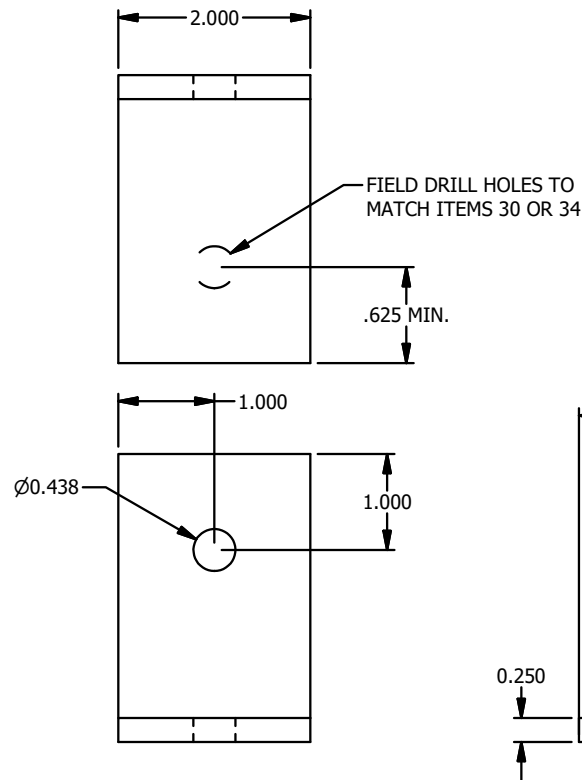


MELISSA M. MASSAR, P.E.
NO. 132158

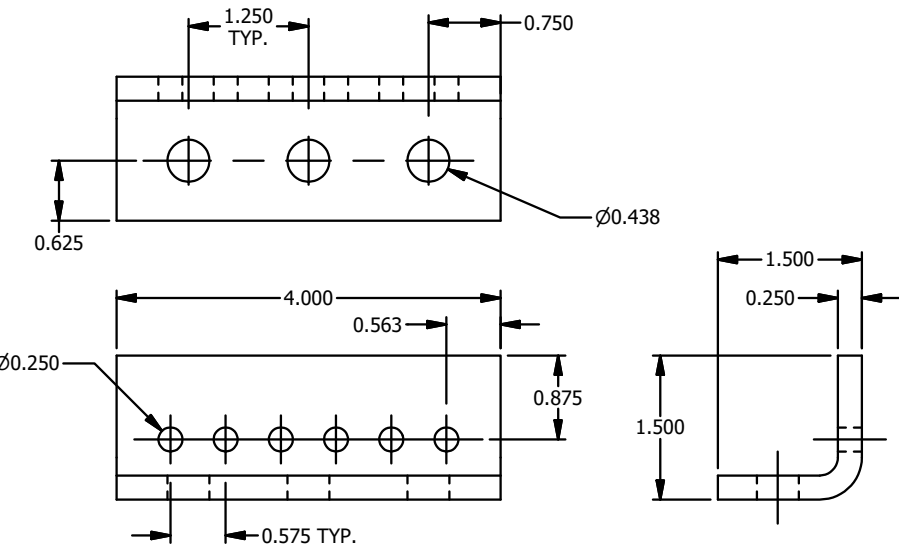
A	REV'D ENGINEER OF RECORD, UPDATED INFO.	NS	MMM	MMM		12/11/20
REV	DESCRIPTION	BY	CHK	APVD	ECN	DATE
AUTHOR	NS	10/10/2018	 3900 Doctor Greaves Road, Grandview, MO 64030 PROPRIETARY & CONFIDENTIAL			
CHECKED	MMM	10/22/2018				
APPROVED	MMM	10/22/2018				
MATERIAL	EXTRUDED ALUMINUM	PRODUCT	ELC6375DXD - EXTRUDED COMBINATION LOUVER			
		TITLE	ELC6375DXD - PARTS			
SIZE	B	DWG NO	60-022427-00B		REV	A
ECN		SCALE	N.T.S.		INVENTOR	SHEET 14 OF 16



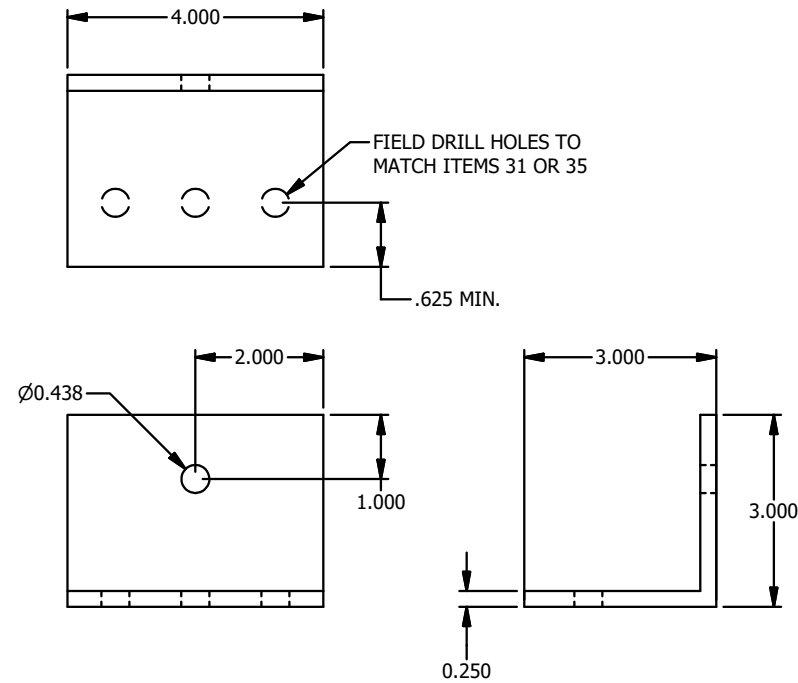
FORMED CLIP ANGLE, 2" LG ITEM #30
 N.T.S.
 RUSKIN# 85-021593-00B



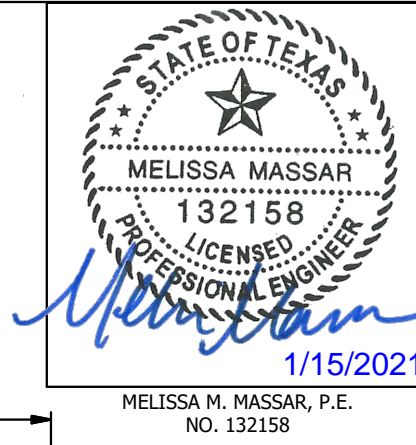
ALTERNATE ATTACHMENT ANGLE, 2" LG ITEM #32
 N.T.S.



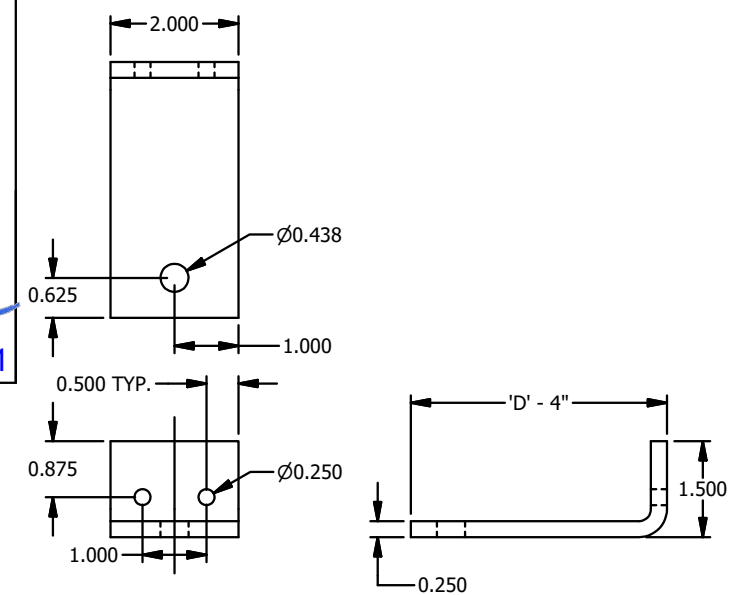
FORMED CLIP ANGLE, 4" LG ITEM #31
 N.T.S.
 RUSKIN# 85-021594-00B



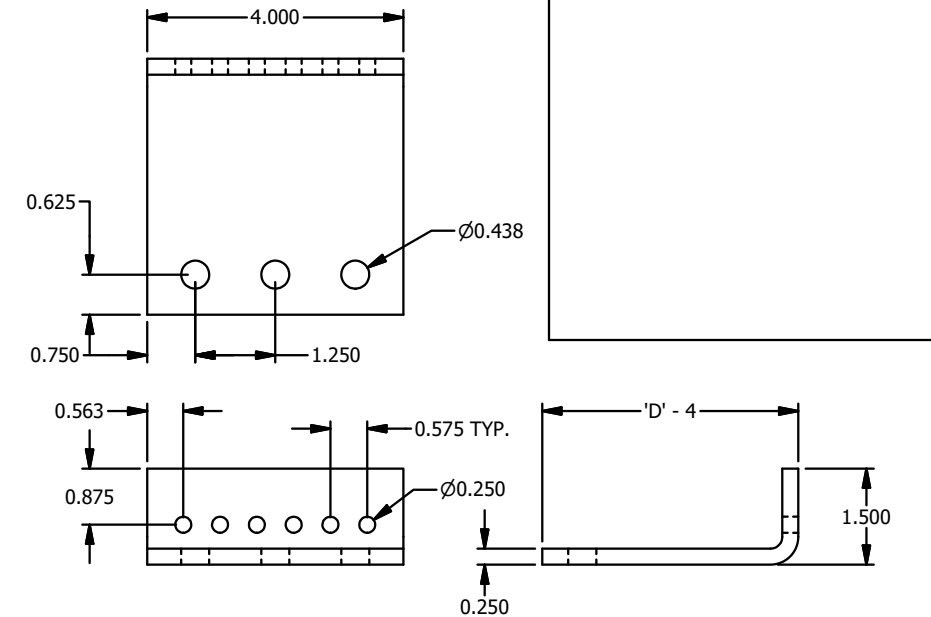
ALTERNATE ATTACHMENT ANGLE, 4" LG ITEM #33
 N.T.S.



MELISSA M. MASSAR, P.E.
 NO. 132158

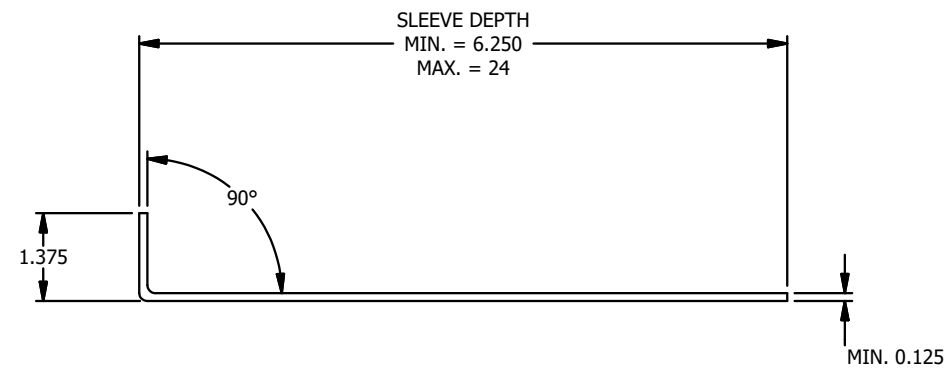


ALTERNATE FORMED CLIP ANGLE, 2" LG ITEM #34
 N.T.S.

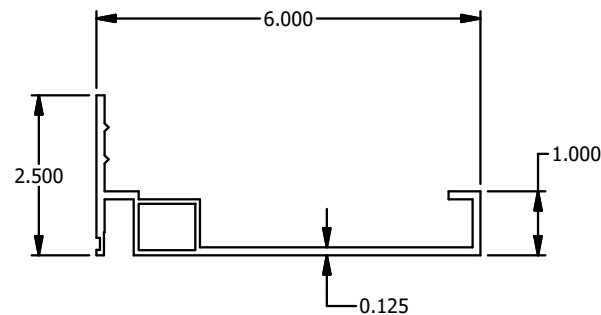


ALTERNATE FORMED CLIP ANGLE, 4" LG ITEM #35
 N.T.S.

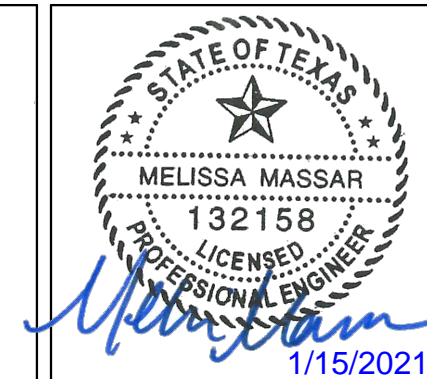
REV	DESCRIPTION	BY	CHK	APVD	ECN	DATE
A	REV'D ENGINEER OF RECORD, UPDATED INFO.	NS	MMM	MMM		12/11/20
AUTHOR	NS	10/10/2018	3900 Doctor Greaves Road, Grandview, MO 64030 PROPRIETARY & CONFIDENTIAL			
CHECKED	MMM	10/22/2018				
APPROVED	MMM	10/22/2018				
MATERIAL	EXTRUDED ALUMINUM	PRODUCT ELC6375DXD - EXTRUDED COMBINATION LOUVER				
TITLE ELC6375DXD - PARTS						
ECN		SCALE N.T.S.	DWG NO 60-022427-00B		REV A	
			INVENTOR	SHEET 15 OF 16		



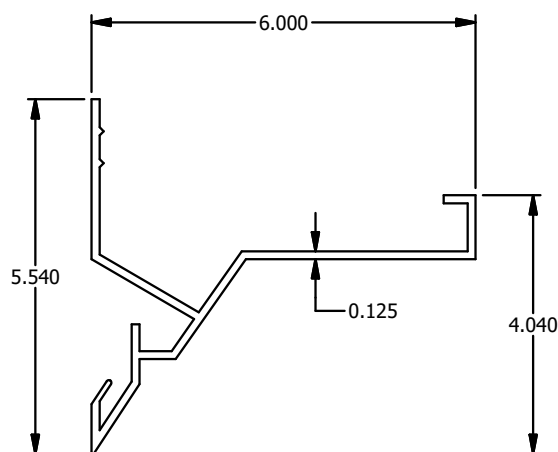
FRONT FLANGE UNIVERSAL SLEEVE ITEM #40
N.T.S.



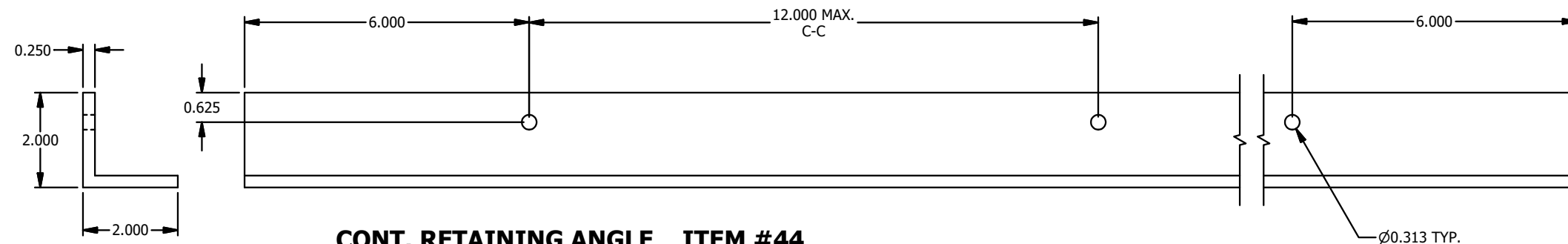
JAMB FRAME W/ INTEGRAL FLANGE ITEM #43
N.T.S.
RUSKIN #70-020840-00B



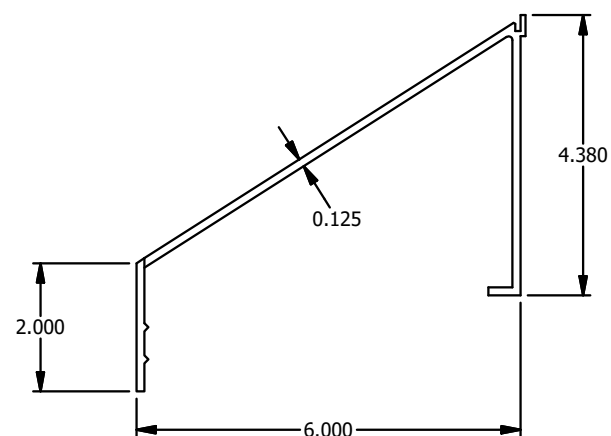
MELISSA M. MASSAR, P.E.
NO. 132158



HEAD FRAME W/ INTEGRAL FLANGE ITEM #41
N.T.S.
RUSKIN #70-020838-00B



CONT. RETAINING ANGLE ITEM #44
N.T.S.



SILL FRAME W/ INTEGRAL FLANGE ITEM #42
N.T.S.
RUSKIN #70-021129-00B

A	REV'D ENGINEER OF RECORD, UPDATED INFO.	NS	MMM	MMM		12/11/20
REV	DESCRIPTION	BY	CHK	APVD	ECN	DATE
AUTHOR	NS	10/10/2018				
CHECKED	MMM	10/22/2018				
APPROVED	MMM	10/22/2018				
MATERIAL	EXTRUDED ALUMINUM	PRODUCT	ELC6375DXD - EXTRUDED COMBINATION LOUVER			
		TITLE	ELC6375DXD - PARTS			
		SIZE	B	DWG NO	60-022427-00B	REV
						A
ECN		SCALE	N.T.S.	INVENTOR	SHEET 16 OF 16	



3900 Doctor Greaves Road,
Grandview, MO 64030
PROPRIETARY &
CONFIDENTIAL