

PARTS LIST			
ITEM #	DESCRIPTION	MATERIAL	ALLOY
1	HEAD FRAME	0.080" THK. EXTRUDED ALUM.	6063-T6
2	SILL FRAME	0.125" THK. EXTRUDED ALUM.	6063-T6
3	JAMB FRAME	0.080" THK. EXTRUDED ALUM.	6063-T6
4	DRAINABLE BLADE	0.080" THK. EXTRUDED ALUM.	6063-T6
5	BLADE BRACE	0.100" THK. EXTRUDED ALUM.	6063-T6
6	BLADE/MULLION SUPPORT ATTACHMENT ANGLE	0.125" THK. EXTRUDED ALUM.	6063-T6
7	3/8-16 X 1.500" LG A307 GRADE A HHB W/ WASHER & LOCKNUT	ZINC PLATED	-

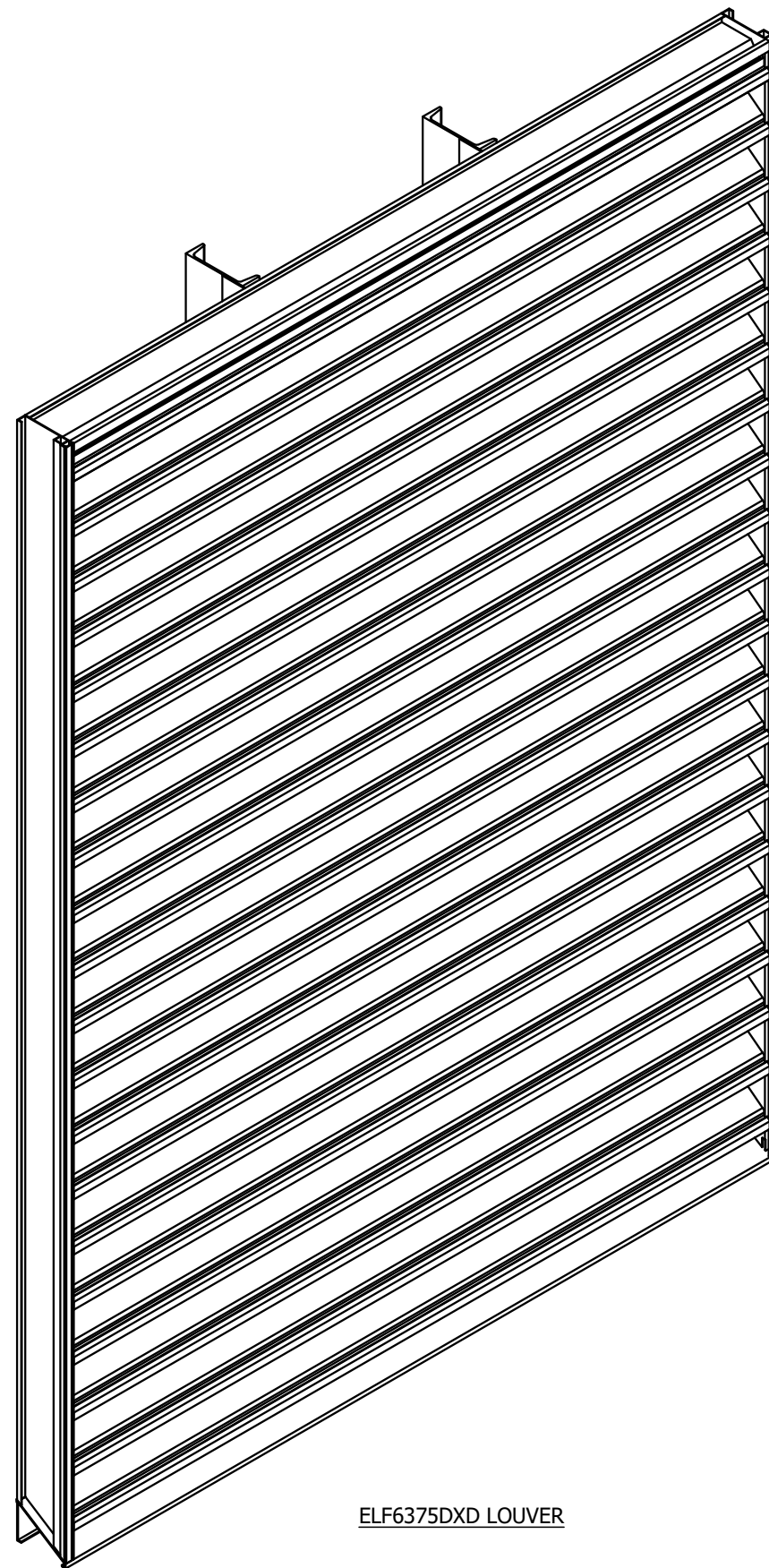
INSTALLATION PARTS			
ITEM #	DESCRIPTION	MATERIAL	ALLOY
8	ATTACHMENT CLIP ANGLE	0.250" THK EXTRUDED ALUM.	6063-T6
9	ALTERNATE CLIP ANGLE - FORMED	0.250" THK FORMED ALUM.	3003-H14
10	STRUCTURAL ATTACHMENT ANGLE, 18" LG.	0.500" THK A36 STL	-
11	ATTACHMENT ANGLE (CMU)	0.250" THK EXTRUDED ALUM.	6063-T6
12	SUPPORT ATTACHMENT PLATE	0.250" THK. A36 STL	-
13	SUPPORT ATTACHMENT PLATE (WOOD)	0.250" THK. A36 STL	-
14	SCREW #10-16 X 1.500" LG. HWH SDS	410SS/ZINC COATED	-
15	3/8-16 X 3.000" LG A307 GRADE A HHB W/ WASHER & LOCKNUT	ZINC PLATED	-
16	1/4-20 X 1.500" LG A307 GRADE A HHB W/ WASHER & LOCKNUT	ZINC PLATED	-
17	3/8-16 X 2.000" LG A307 GRADE A HHB W/ WASHER & LOCKNUT	ZINC PLATED	-
18	SUBSTRATE FASTENER (BY OTHERS)	VARIES (REF TABLE 1/08)	-

UNIVERSAL SLEEVE PARTS			
ITEM #	DESCRIPTION	MATERIAL	ALLOY
19	HEAD FRAME W/INTEGRAL FLANGE	0.125" THK. EXTRUDED ALUM.	6063-T6
20	SILL FRAME W/INTEGRAL FLANGE	0.125" THK. EXTRUDED ALUM.	6063-T6
21	JAMB FRAME W/INTEGRAL FLANGE	0.080" THK. EXTRUDED ALUM.	6063-T6
22	FRONT FLANGE UNIVERSAL SLEEVE	0.250" THK FORMED ALUM.	3003-H14
23	CONT. RETAINING ANGLE - HEAD/SILL	0.250" THK EXTRUDED ALUM.	6063-T6
24	CONT. RETAINING ANGLE - JAMBS	0.250" THK EXTRUDED ALUM.	6063-T6
25	US SUPPORT ATTACHMENT ANGLE, 5" LG.	0.250" THK EXTRUDED ALUM.	6063-T6
26	1/2-13 X 1.500" LG A307 GRADE A HHB W/ WASHER & LOCKNUT	ZINC PLATED	-
27	1/2-13 X 2.000" LG A307 GRADE A HHB W/ WASHER & LOCKNUT	ZINC PLATED	-
28	SCREW 1/4-20 X 1.000" LG. HWH SDS	410SS/ZINC COATED	-

H.V.B.S. / MULLION SUPPORTS OPTIONS BASED ON SECTION HEIGHT				
ITEM #	DESCRIPTION	LOUVER HEIGHT RANGE	MATERIAL	ALLOY
29	ANG 2 X 2 X .25	UP TO 27" TALL	A36 STEEL	-
30	CHAN C3 X 4.1	GREATER THAN 27" TO 74"	A36 STEEL	-
31	CHAN C4 X 5.4	GREATER THAN 74" TO 86"	A36 STEEL	-
32	CHAN C5 X 6.7	GREATER THAN 86" TO 99"	A36 STEEL	-
33	CHAN C6 X 8.2	GREATER THAN 99" TO 111"	A36 STEEL	-
34	CHAN C7 X 9.8	GREATER THAN 111" TO 119.75"	A36 STEEL	-

NOTES

- THE ELF6375DXD COMPLIES WITH THE REQUIREMENTS OF THE 2018 IBC. THE ELF6375DXD HAS BEEN TESTED IN ACCORDANCE WITH FLORIDA PROTOCOLS TAS-201, 202 & 203 FOR LARGE MISSILE IMPACT, UNIFORM PRESSURE AND CYCLIC WIND PRESSURE.
- THIS LOUVER SYSTEM IS APPROVED FOR APPLICATIONS WITH DESIGN PRESSURES OF **± 148 PSF OR LESS**.
- THIS LOUVER SYSTEM IS NON-BEARING AND IS NOT DESIGNED TO WITHSTAND BUILDING DEAD LOADS.
- IT SHALL BE RESPONSIBILITY OF PERMIT HOLDER/BUILDING DESIGN ENGINEER OF RECORD TO VERIFY THE STRUCTURAL INTEGRITY OF THE STRUCTURE TO SUPPORT THE LOADS IMPOSED BY THIS LOUVER SYSTEM.
- MAXIMUM SINGLE SECTION SIZE IS **87 7/8" WIDE X 119 3/4" HIGH**.
- MAXIMUM ASSEMBLED LOUVER SIZE : **UNLIMITED WIDE X 119 3/4" HIGH**. MAXIMUM MULLION SPACING IS **87 7/8"**.
- SECTIONS OR ASSEMBLIES MAY BE STACKED VERTICALLY PROVIDED A SUITABLE STRUCTURAL SUPPORT IS DESIGNED AND INSTALLED BY OTHERS TO SUPPORT ALL LOADS TRANSFERRED FROM THE LOUVER.
- THIS LOUVER SYSTEM IS TO BE INSTALLED IN LOCATIONS WHERE THE ROOM BEHIND THE LOUVER IS DESIGNED TO DRAIN WATER PENETRATING INTO THE ROOM AND THE ROOM WILL HOUSE WATER RESISTANT / WATER PROOF EQUIPMENT, COMPONENTS OR SUPPLIES.
- ALL CMU BLOCKS MUST BE GROUT FILLED. MIN. PRISM STRENGTH OF 1500 PSI AT TIME OF INSTALLATION. CMU BLOCKS MUST BE MIN. TYPE 1, GRADE N, LIGHT, MEDIUM OR NORMAL WEIGHT PER ASTM C90. GROUT AND MORTAR MUST COMPLY WITH FLORIDA BUILDING CODE.
- PART NUMBERS WITH SQUARE BALLOONS ARE **"SHIP LOOSE PARTS"**.
- ALL FASTENERS SHALL BE CORROSION RESISTANT.



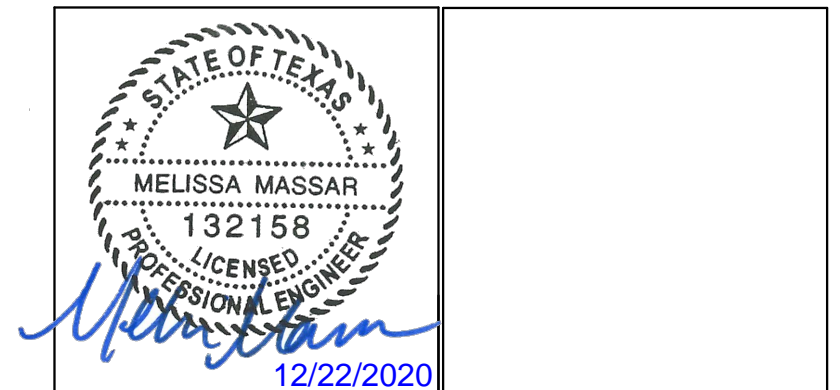
ELF6375DXD LOUVER

DRAWING SHEET INDEX:

- SHEET 01 - NOTES, PARTS LIST, DRAWING INDEX, ISO VIEW
- SHEET 02 - ASSEMBLY "A" - BASIC ASSEMBLY & WELDMENT DETAILS
- SHEET 03 - ASSEMBLY "A" - MULTI-SECTION 3X1
- SHEET 04 - ASSEMBLY "A" - METAL & CONCRETE INSTALL
- SHEET 05 - ASSEMBLY "A" - CMU INSTALL
- SHEET 06 - ASSEMBLY "A" - UNIVERSAL SLEEVE INSTALL
- SHEET 07 - ASSEMBLY "A" - INSTALLATION DETAILS @ JAMB
- SHEET 08 - ASSEMBLY "A" - WOOD INSTALL, SUBSTRATE FASTENER TABLE
- SHEET 09 - PARTS (ITEMS 1 THRU 6, 8 & 9)
- SHEET 10 - PARTS (ITEMS 10 THRU 13, 19 THRU 21)
- SHEET 11 - PARTS (ITEMS 22), SUPPOT ATTACHMENT PLATE - WELDMENT DETAIL
- SHEET 12 - PARTS (ITEMS 23 THRU 25, 28 THRU 33)

ABBREVIATIONS:

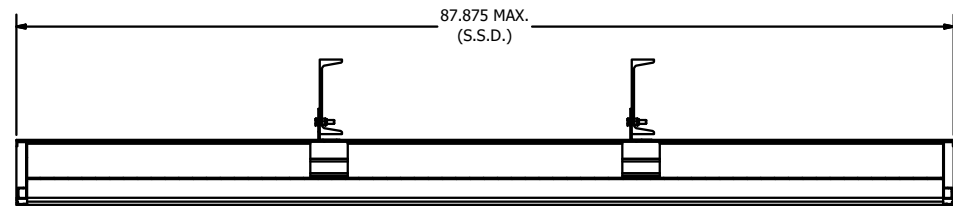
- CONT. - CONTINUOUS
- C-C - CENTER TO CENTER
- D - SUBSTRATE DEPTH
- DIM. - DIMENSION
- FLG. - FLANGE
- HVG - HOT DIPPED GALVANIZED
- H.V.B.S. - HIDDEN VERTICLE BLADE SUPPORT
- H.H.B.S. - HIDDEN HORIZONTAL BLADE SUPPORT
- HWH - HEX WASHER HEAD
- L.D. - LOUVER DIMENSION
- MAX. - MAXIMUM
- MIN. - MINIMUM
- NOM. - NOMINAL
- N.T.E. - NOT TO EXCEED
- N.T.S. - NOT TO SCALE
- O/C - ON CENTER
- OPP. - OPPOSITE
- R.O. - ROUGH OPENING
- REF. - REFERENCE
- S.S. - SHIP SECTION
- S.S.D. - SHIP SECTION DIMENSION
- S.D.S. - SELF DRILLING SCREW
- SIM. - SIMILAR
- STL - STEEL
- SUB. - SUBSTRATE
- TYP. - TYPICAL
- U.N.O. - UNLESS NOTED OTHERWISE



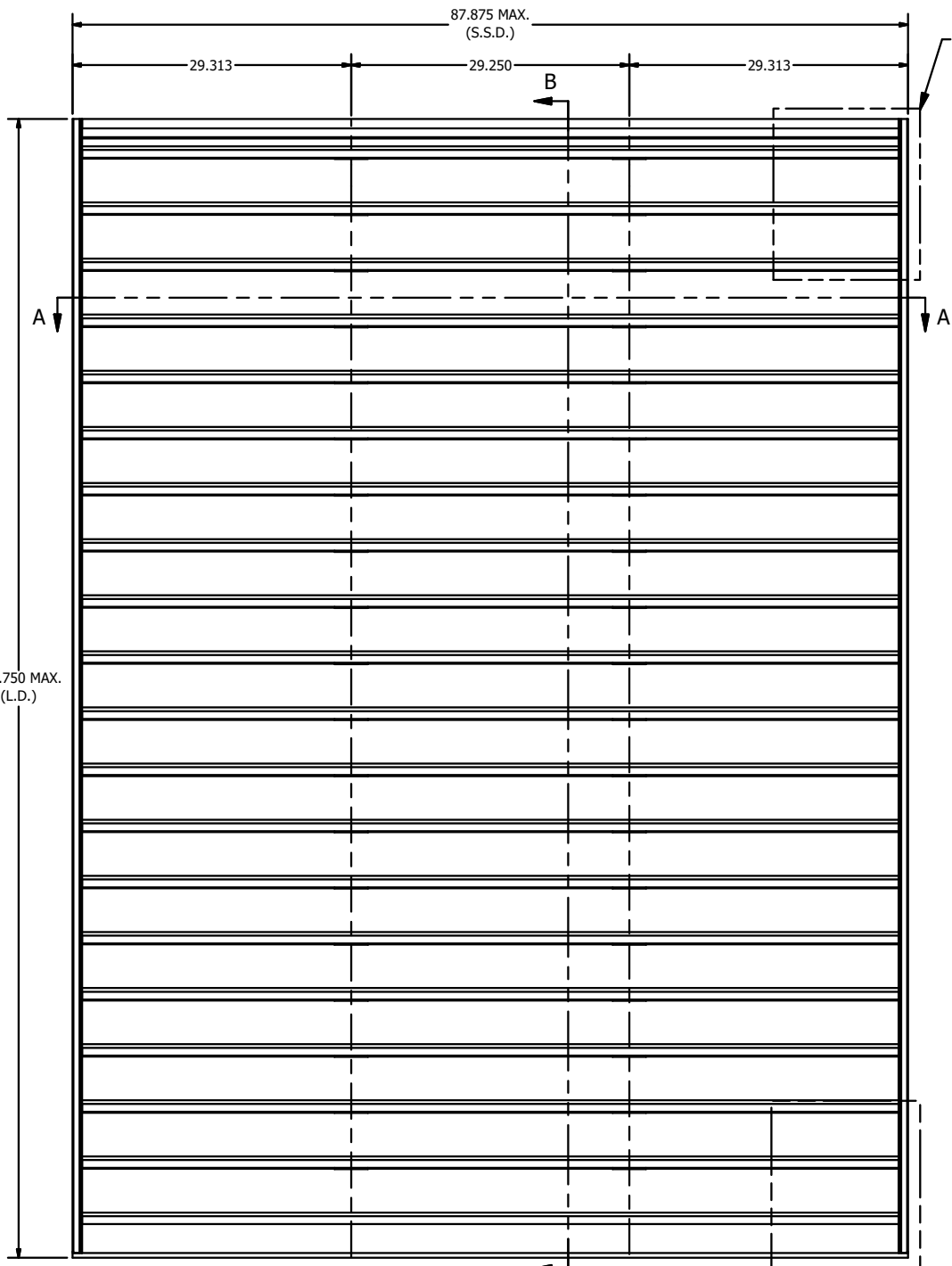
MELISSA M. MASSAR, P.E.
NO. 132158

REV	DESCRIPTION	BY	CHK	APVD	APVD	DATE
A	REV'D ENGINEER OF RECORD, UPDATED INFO.	NS	JDS	WRT	MMM	09/25/20
AUTHOR	DJR	2/17/2012	 3900 Doctor Greaves Rd, Grandview, MO 64030 PROPRIETARY AND CONFIDENTIAL			
CHECKED	DRP	3/23/2012	PRODUCT: ELF6375DXD - WIND-DRIVEN RAIN RESISTANT LOUVER TITLE: NOTES, PARTS LIST, DRAWING INDEX			
APPROVED	DRP	3/23/2012	SIZE	DWG NO	REV	
			D	60-022375-00B	A	
			SCALE	INVENTOR	SHEET	1 OF 12
			NONE			

Tolerances
Unless Stated Otherwise
Use WIQ-007, WIQ-008
Fractions ±1/16
Two Decimals ±0.020
Three Decimals ±0.010
Angle Dimensions ±2'

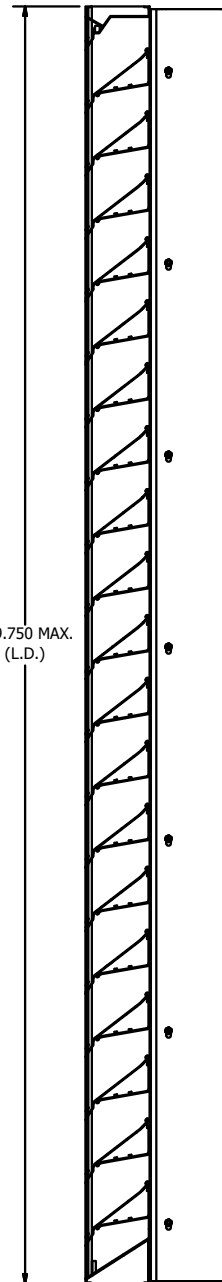


SECTION A-A



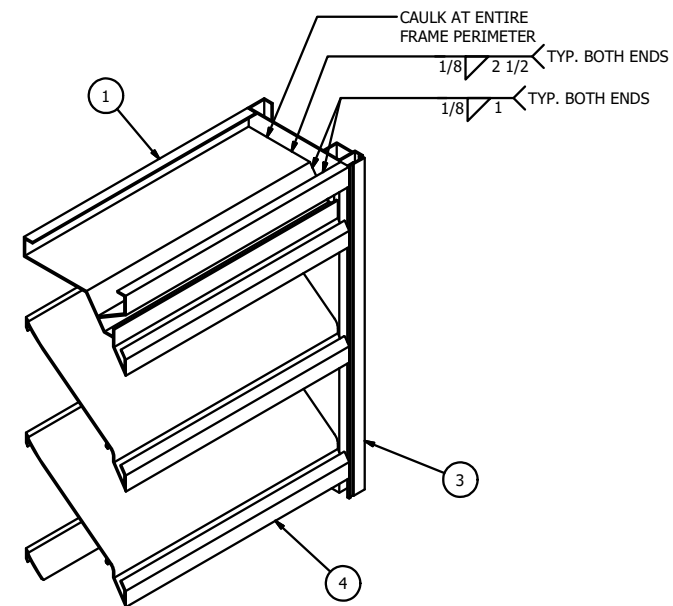
ASSEMBLY "A" - SINGLE SECTION VIEW
LOUVER SIZE - 87.875" W X 119 3/4" H

REF DETAIL A
FOR HEAD FRAME WELDMENT/SEALANT DETAIL

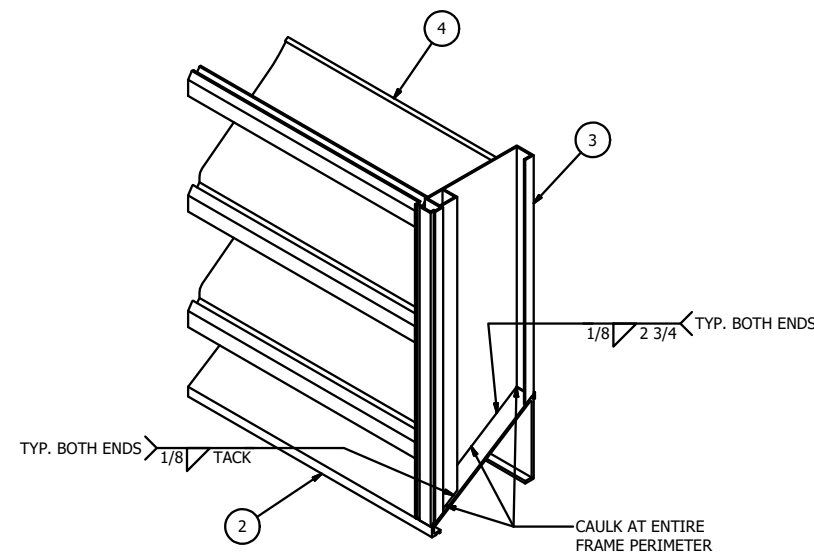


SECTION B-B

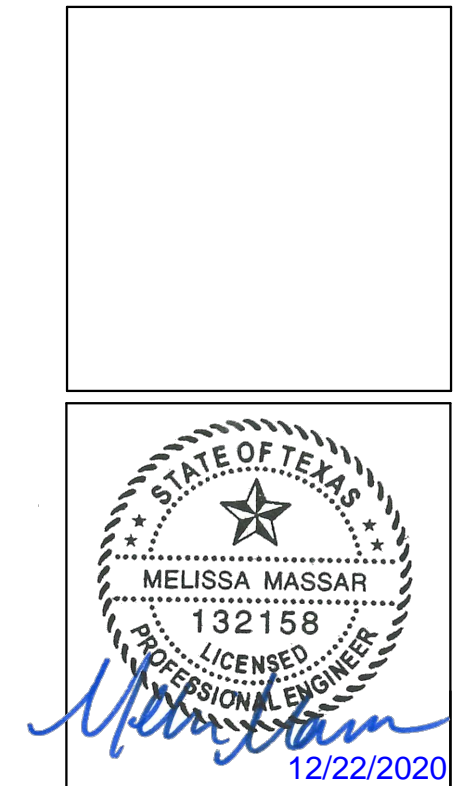
REF DETAIL B
FOR SILL FRAME WELDMENT/SEALANT DETAIL



DETAIL A
HEAD FRAME WELDMENT & SEALANT DETAIL



DETAIL B
SILL FRAME WELDMENT & SEALANT DETAIL



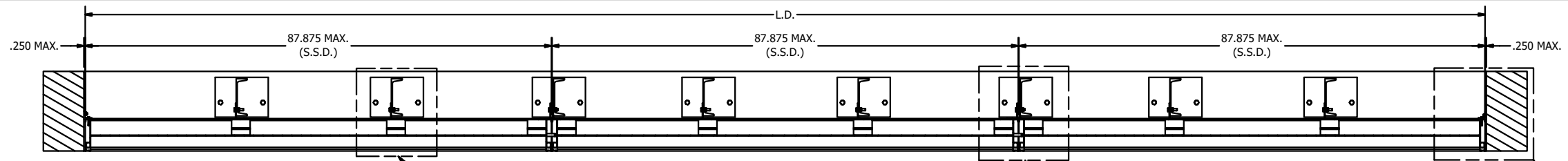
MELISSA M. MASSAR, P.E.
NO. 132158

Tolerances:
Unless Stated Otherwise
Use WIQ-007, WIQ-008
Fractions ±1/16
Two Decimals ±0.020
Three Decimals ±0.010
Angle Dimensions ±2'

A	REV'D ENGINEER OF RECORD, UPDATED INFO.	NS	JDS	WRT	MMM	09/25/20
REV	DESCRIPTION	BY	CHK	APVD	APVD	DATE
AUTHOR	DJR	2/17/2012				
CHECKED	DRP	3/23/2012				
APPROVED	DRP	3/23/2012				
APPROVED						
MATERIAL						
TITLE		ASSEMBLY "A" - BASIC ASSEMBLY & DETAILS				
SIZE	D	DWG NO	60-022375-00B		REV	A
ECN		SCALE	NONE	INVENTOR	SHEET 2 OF 12	

RUSKIN
AUTHORITY IN AIR CONTROL
3900 Doctor Greaves Rd,
Grandview, MO 64030
PROPRIETARY AND
CONFIDENTIAL

PRODUCT: ELF6375DXD - WIND-DRIVEN RAIN RESISTANT LOUVER

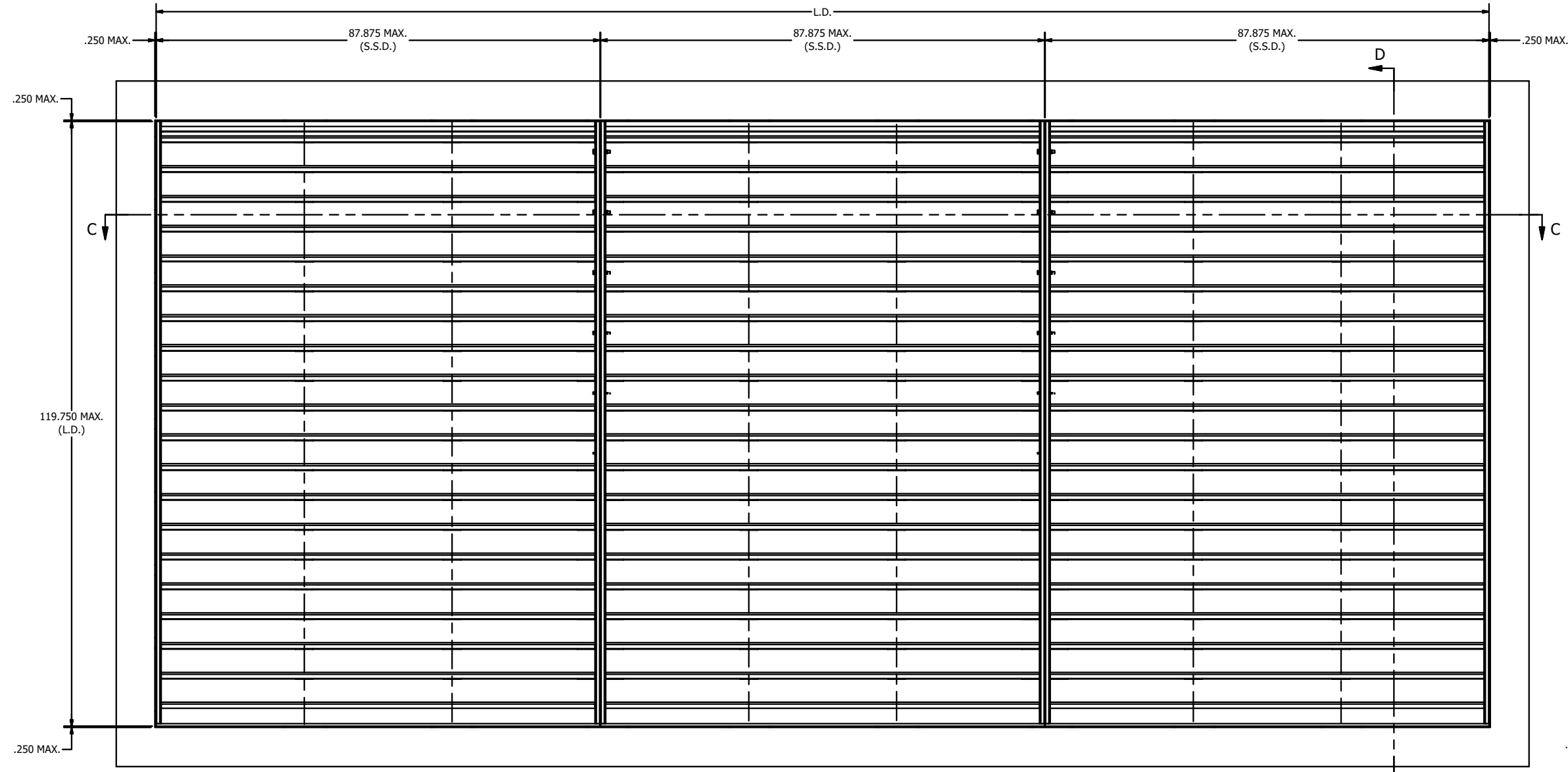


REF DETAIL D/04
FOR SUPPORT ATTACHMENT PLATE
INSTALLATION DETAIL @ HVBS - (METAL/CONCRETE)
REF DETAIL G/05 (CMU)
REF DETAIL L/06 (UNIVERSAL SLEEVE)
REF DETAIL R/08 (WOOD)

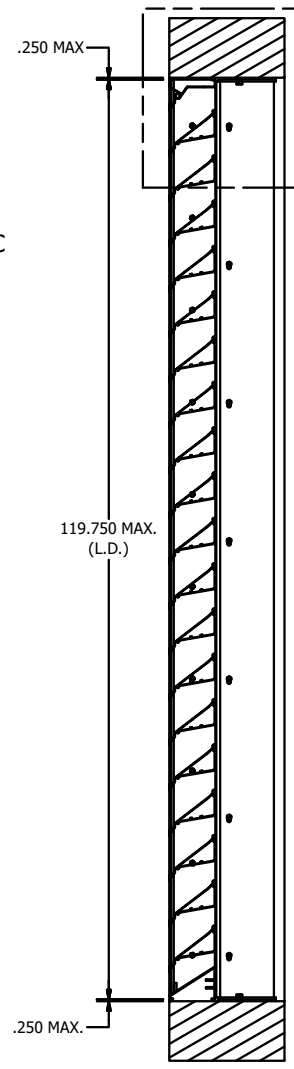
REF DETAIL E/04
FOR SUPPORT ATTACHMENT PLATE
INSTALLATION DETAIL @ MULLIONS - (METAL/CONCRETE)
REF DETAIL H/05 (CMU)
REF DETAIL M/06 (UNIVERSAL SLEEVE)
REF DETAIL S/08 (WOOD)

REF DETAIL N/07
FOR ATTACHMENT CLIP ANGLE
INSTALLATION DETAIL @ JAMBS
(WOOD/METAL/CONCRETE)
REF DETAIL P/07 (CMU)
REF DETAIL Q/07 (UNIVERSAL SLEEVE)

MELISSA M. MASSAR, P.E.
NO. 132158



REF DETAIL C/04
FOR SUPPORT ATTACHMENT PLATE
INSTALLATION DETAIL @ HEAD/SILL
(METAL/WOOD/CONCRETE)
REF DETAIL F/05
FOR SUPPORT ATTACHMENT PLATE
INSTALLATION DETAIL @ HEAD/SILL
(GROUT-FILLED CMU)
REF DETAIL J/06
FOR UNIVERSAL SLEEVE
WELDMENT DETAIL @ HEAD
REF DETAIL K/06
FOR SUPPORT ATTACHMENT PLATE
INSTALLATION DETAIL @ HEAD
(UNIVERSAL SLEEVE)

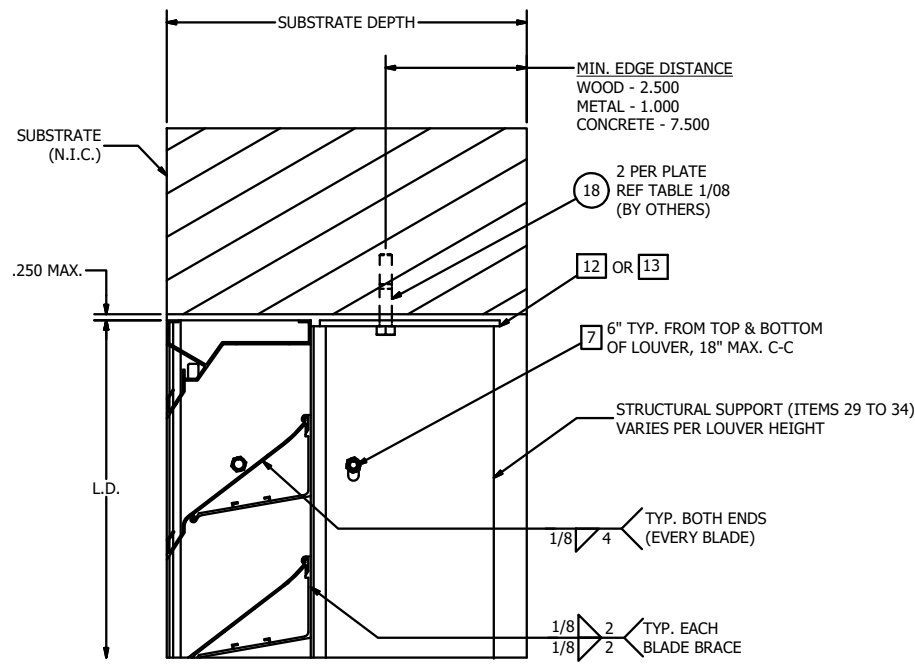


ASSEMBLY "A" - 3X1 MULTI SECTION VIEW
MAX. SHIP SECTION : **87.875" W X 119 3/4" H**

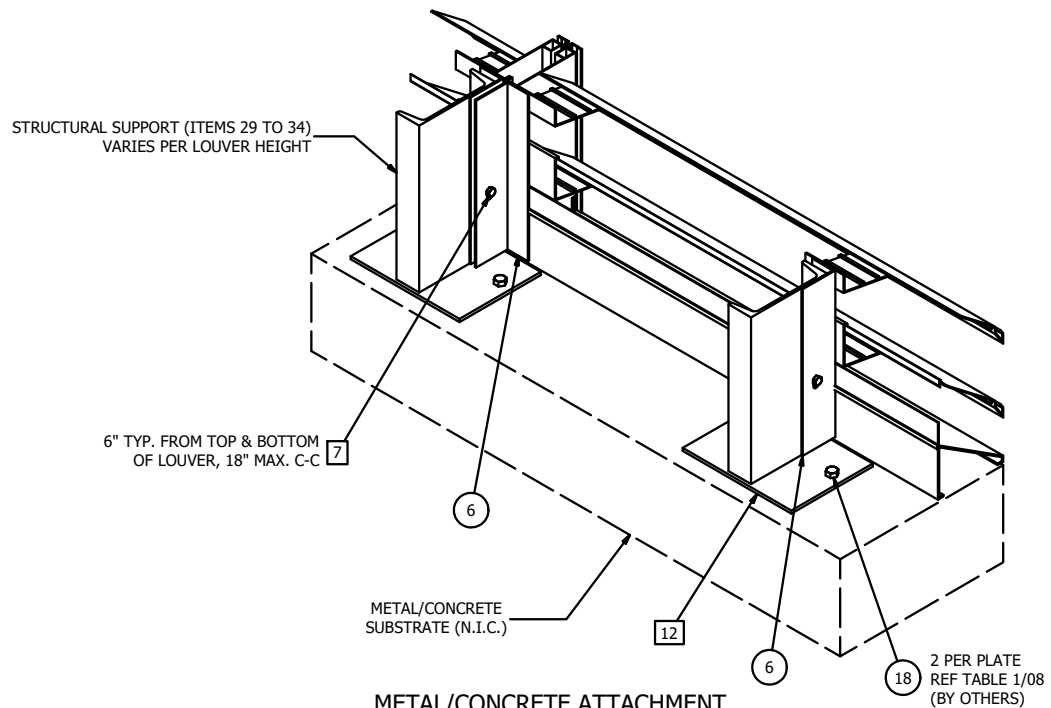
Tolerances
Unless Stated Otherwise
Use WIQ-007, WIQ-008
Fractions ±1/16
Two Decimals ±0.020
Three Decimals ±0.010
Angle Dimensions ±2'

A	REV'D ENGINEER OF RECORD, UPDATED INFO.	NS	JDS	WRT	MMM	09/25/20
REV	DESCRIPTION	BY	CHK	APVD	APVD	DATE
AUTHOR	DJR	2/17/2012				
CHECKED	DRP	3/23/2012				
APPROVED	DRP	3/23/2012				
APPROVED						
MATERIAL						
TITLE		ELF6375DXD - ASSEMBLY "A"				
SIZE	D	DWG NO	60-022375-00B		REV	A
SCALE	NONE	INVENTOR	SHEET 3 OF 12			

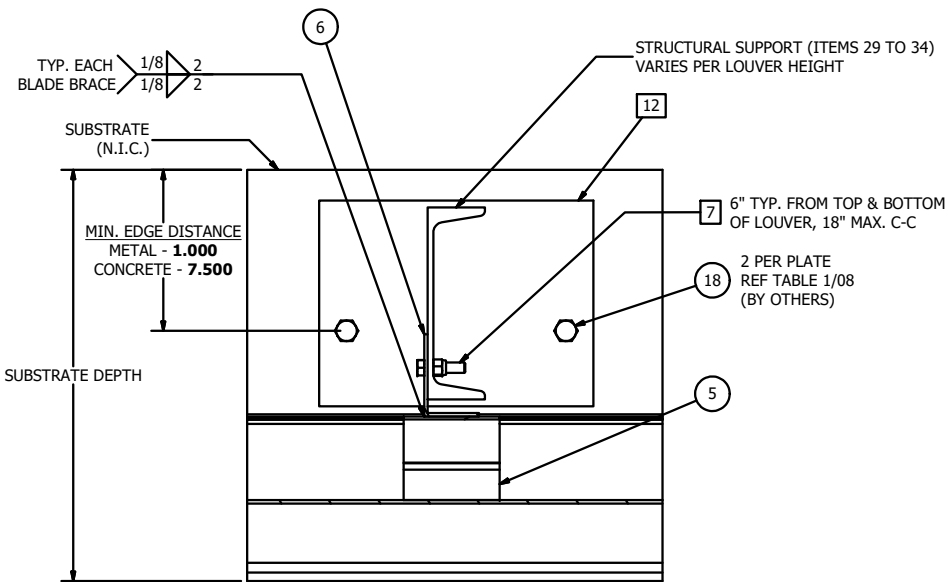




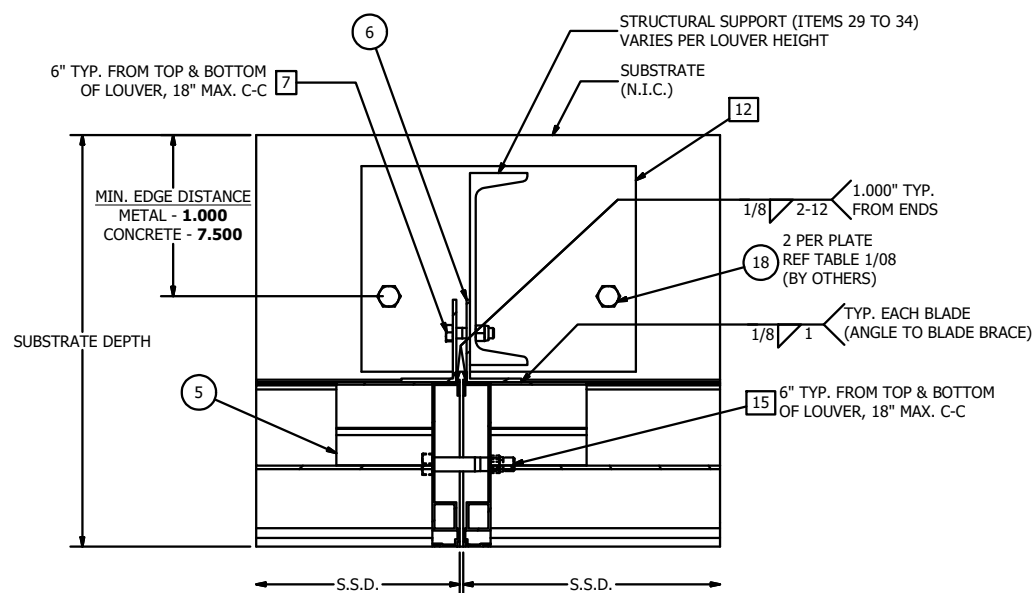
DETAIL C
SUPPORT ATTACHMENT PLATE INSTALLATION DETAIL @ HEAD (SILL SIM.)
(WOOD, METAL & CONCRETE SUBSTRATE ONLY)



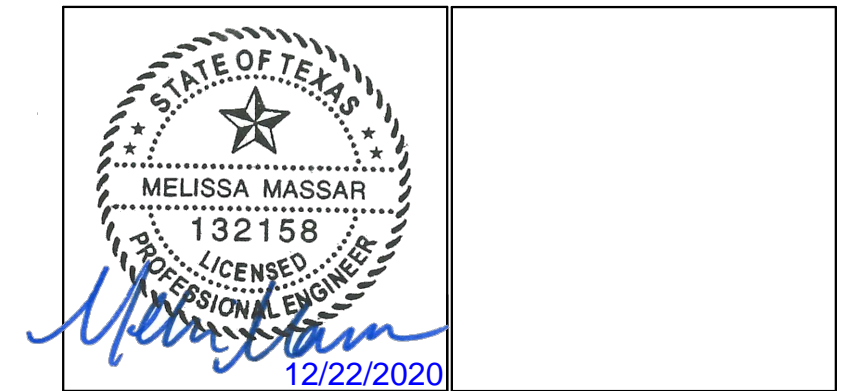
METAL/CONCRETE ATTACHMENT



DETAIL D
SUPPORT ATTACHMENT PLATE INSTALLATION DETAIL @ HVBS
(METAL & CONCRETE SUBSTRATE ONLY)



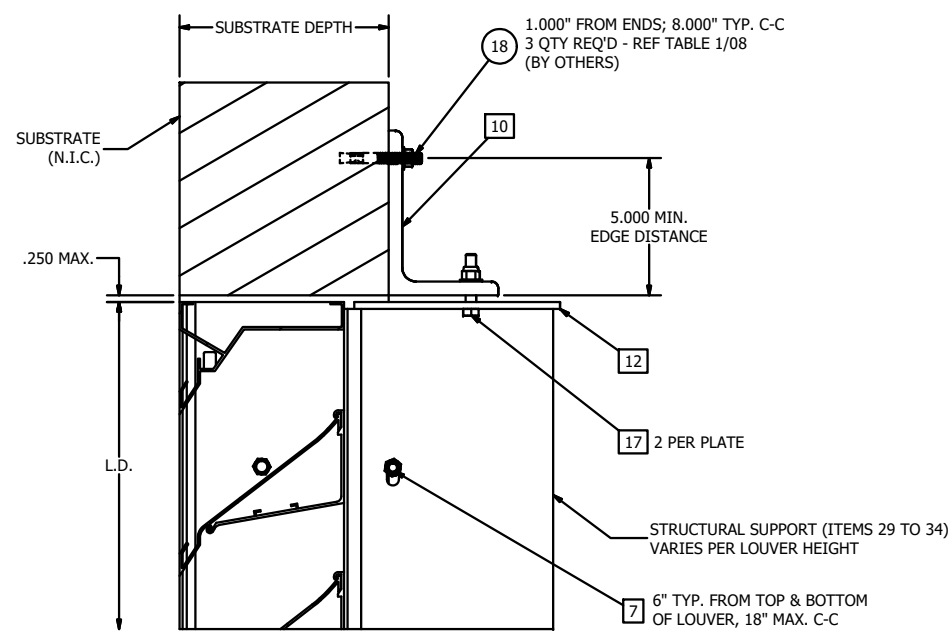
DETAIL E
SUPPORT ATTACHMENT PLATE INSTALLATION DETAIL @ MULLIONS
(METAL & CONCRETE SUBSTRATE ONLY)



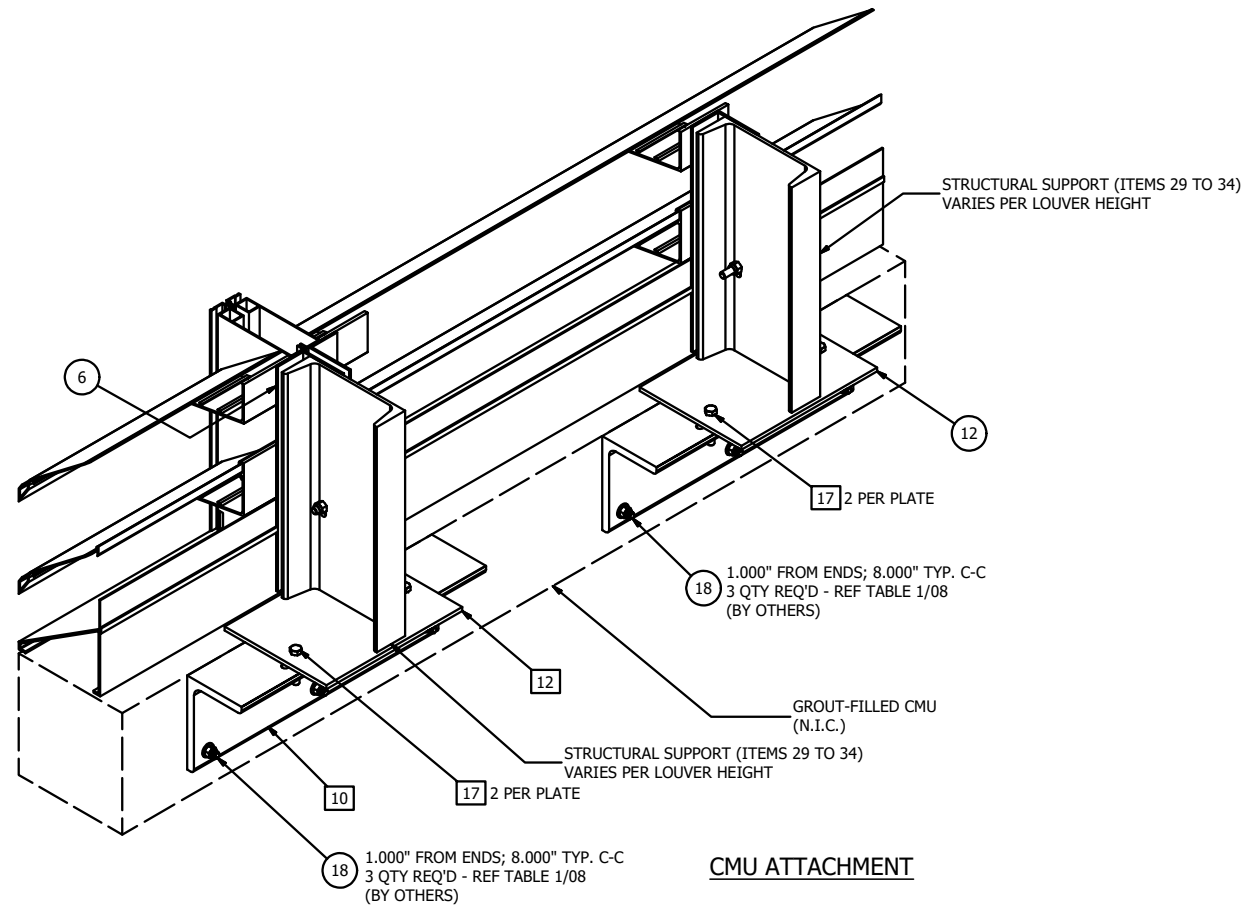
MELISSA M. MASSAR, P.E.
NO. 132158

Tolerances
Unless Stated Otherwise
Use WIQ-007, WIQ-008
Fractions ±1/16
Two Decimals ±0.020
Three Decimals ±0.010
Angle Dimensions ±2'

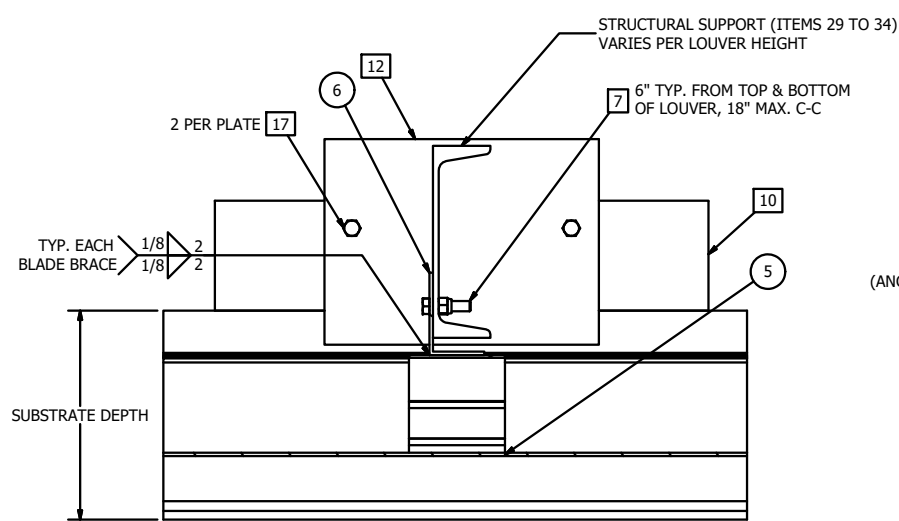
A	REV'D ENGINEER OF RECORD, UPDATED INFO.	NS	JDS	WRT	MMM	09/25/20
REV	DESCRIPTION	BY	CHK	APVD	APVD	DATE
AUTHOR	DJR	2/17/2012	 3900 Doctor Greaves Rd, Grandview, MO 64030 PROPRIETARY AND CONFIDENTIAL			
CHECKED	DRP	3/23/2012	PRODUCT: ELF6375DXD - WIND-DRIVEN RAIN RESISTANT LOUVER TITLE: ASSEMBLY "A" (METAL, CONCRETE INSTALL)			
APPROVED	DRP	3/23/2012	SIZE	DWG NO	REV	
MATERIAL			D	60-022375-00B	A	
ECN		SCALE	NONE	INVENTOR	SHEET 4 OF 12	



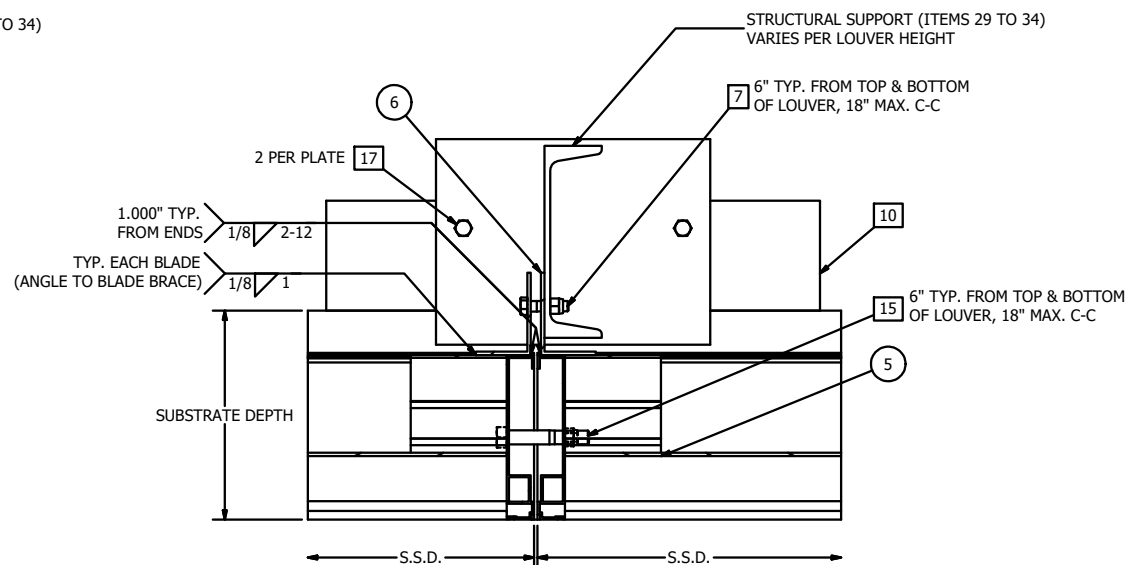
DETAIL F
SUPPORT ATTACHMENT PLATE INSTALLATION DETAIL @ HEAD (SILL SIM.)
(GROUT-FILLED CMU)



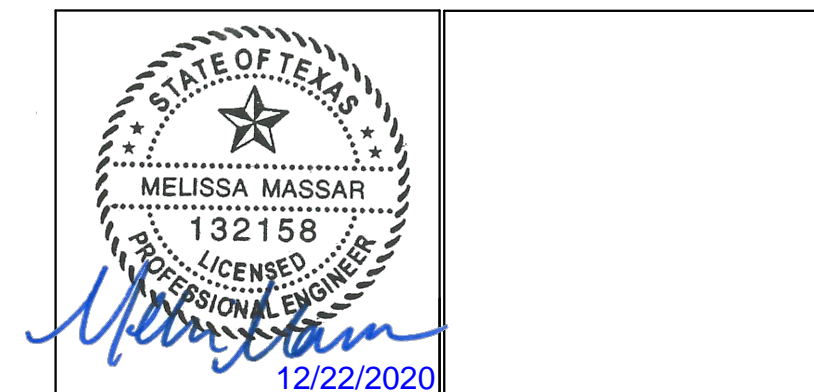
CMU ATTACHMENT



DETAIL G
SUPPORT ATTACHMENT PLATE INSTALLATION DETAIL @ HVBS
(GROUT-FILLED CMU)



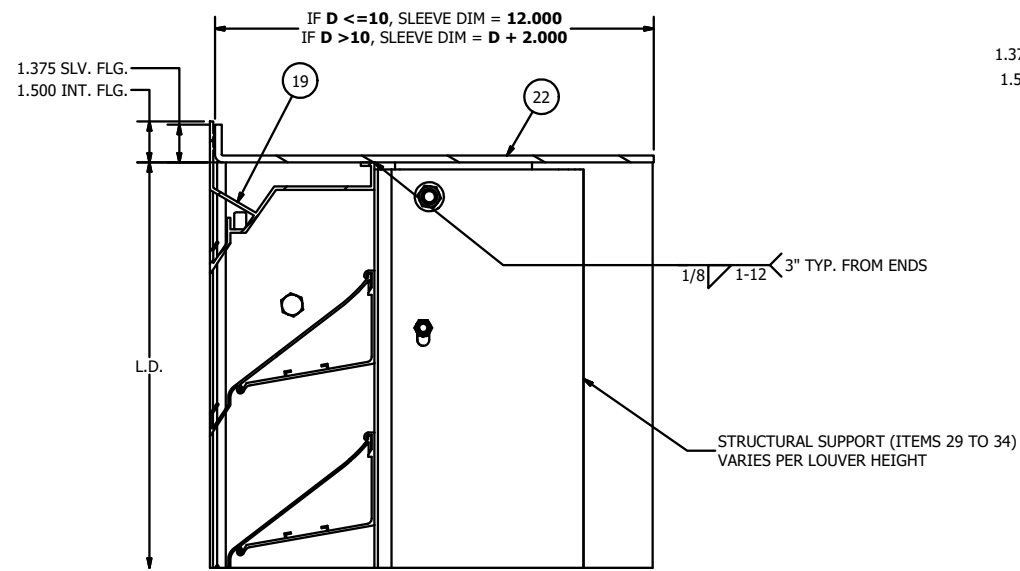
DETAIL H
SUPPORT ATTACHMENT PLATE INSTALLATION DETAIL @ MULLIONS
(GROUT-FILLED CMU)



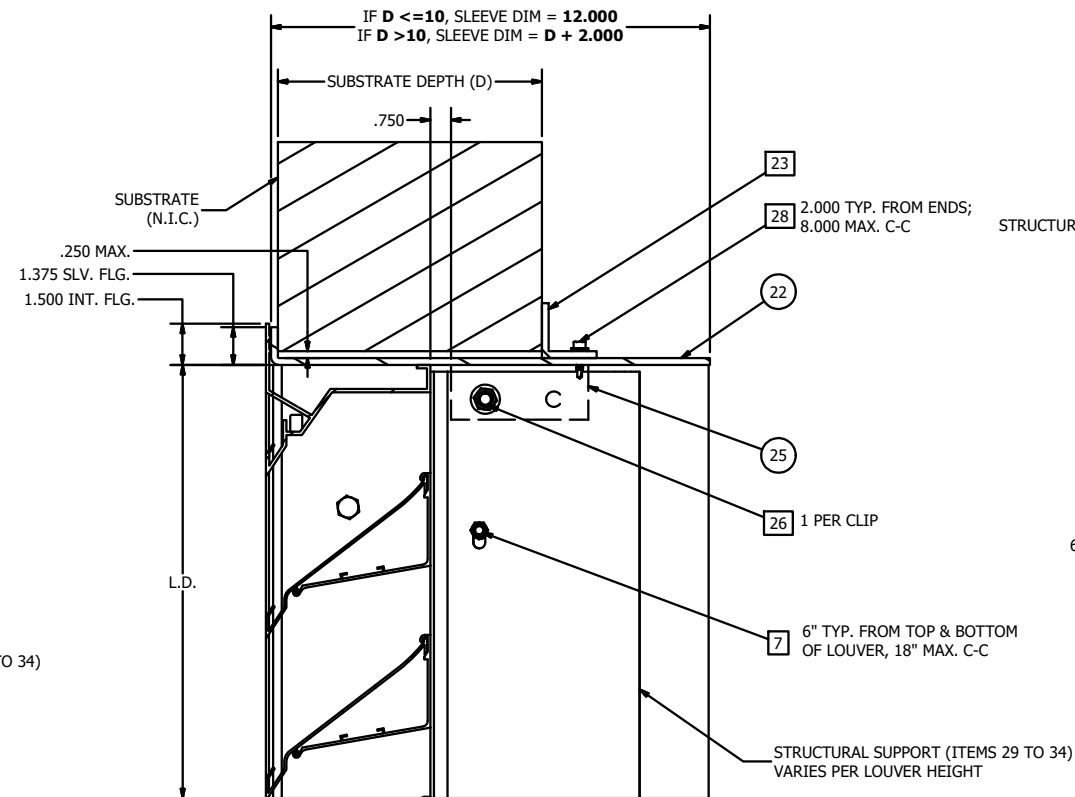
MELISSA M. MASSAR, P.E.
NO. 132158

Tolerances:
Unless Stated Otherwise
Use WIQ-007, WIQ-008
Fractions ±1/16
Two Decimals ±0.020
Three Decimals ±0.010
Angle Dimensions ±2'

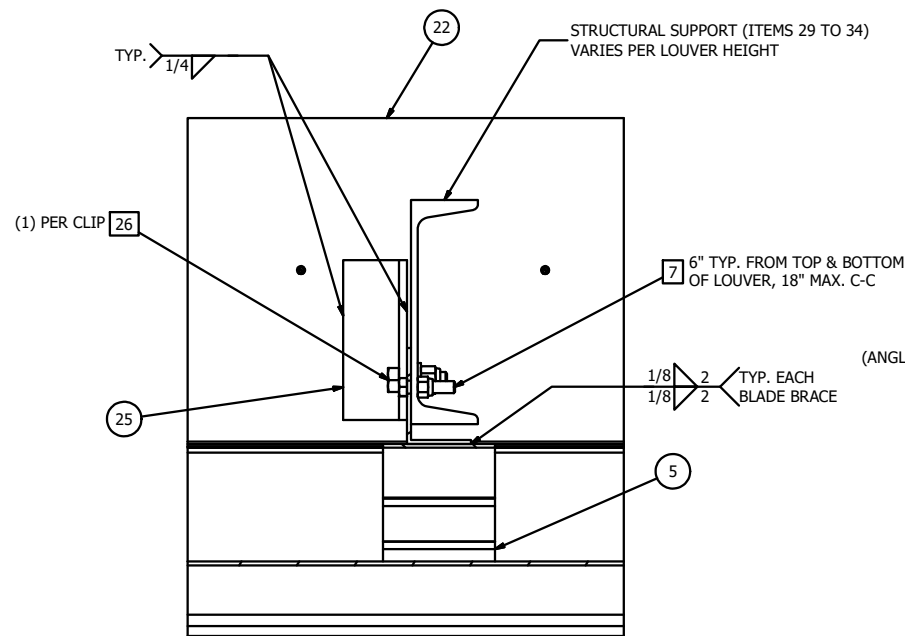
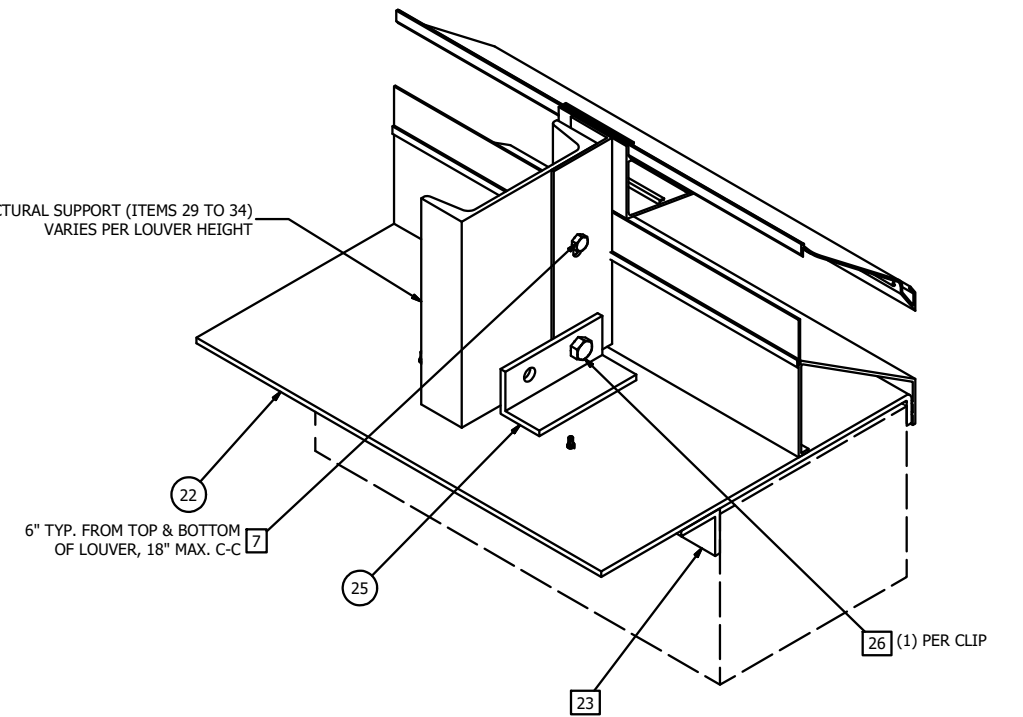
REV	DESCRIPTION	BY	CHK	APVD	APVD	DATE
A	REV'D ENGINEER OF RECORD, UPDATED INFO.	NS	JDS	WRT	MMM	09/25/20
AUTHOR	DJR	2/17/2012	3900 Doctor Greaves Rd, Grandview, MO 64030 PROPRIETARY AND CONFIDENTIAL			
CHECKED	DRP	3/23/2012	RUSKIN AUTHORITY IN AIR CONTROL			
APPROVED	DRP	3/23/2012	PRODUCT: ELF6375DXD - WIND-DRIVEN RAIN RESISTANT LOUVER			
TITLE		ASSEMBLY "A" - CMU INSTALL				
SIZE		DWG NO		REV		
D		60-022375-00B		A		
SCALE		NONE		INVENTOR SHEET 5 OF 12		



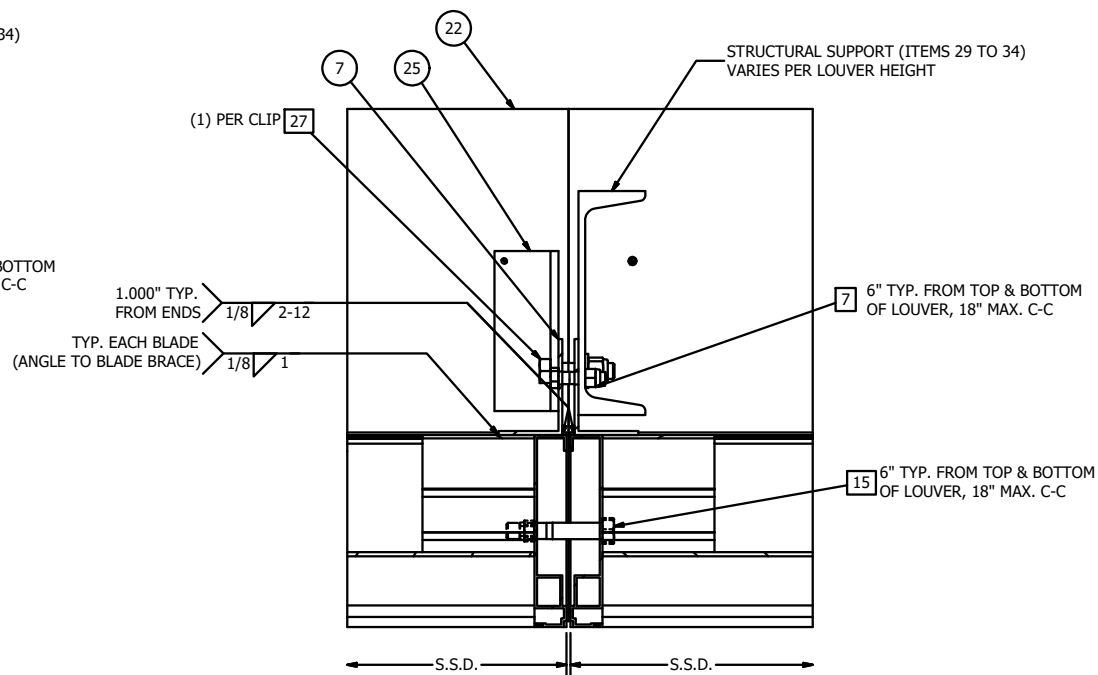
DETAIL J
UNIVERSAL SLEEVE WELDMENT DETAIL
(HEAD FRAME SHOWN, SILL FRAME SIMILAR)



DETAIL K
UNIVERSAL SLEEVE CONNECTION DETAIL
(HEAD FRAME SHOWN, SILL FRAME SIMILAR)



DETAIL L
UNIVERSAL SLEEVE SUPPORT ATTACHMENT ANGLE
INSTALLATION DETAIL @ HVBS



DETAIL M
UNIVERSAL SLEEVE SUPPORT ATTACHMENT ANGLE
INSTALLATION DETAIL @ MULLIONS



MELISSA M. MASSAR, P.E.
NO. 132158

Tolerances
Unless Stated Otherwise
Use WIQ-007, WIQ-008
Fractions ±1/16
Two Decimals ±0.020
Three Decimals ±0.010
Angle Dimensions ±2'

REV	DESCRIPTION	BY	CHK	APVD	APVD	DATE
A	REV'D ENGINEER OF RECORD, UPDATED INFO.	NS	JDS	WRT	MMM	09/25/20
1						
2						
3						
4						
5						
6						
7						
8						
9						
10						
11						
12						
13						
14						
15						
16						
17						
18						
19						
20						
21						
22						
23						
24						
25						
26						
27						
28						
29						
30						
31						
32						
33						
34						
35						
36						
37						
38						
39						
40						
41						
42						
43						
44						
45						
46						
47						
48						
49						
50						
51						
52						
53						
54						
55						
56						
57						
58						
59						
60						
61						
62						
63						
64						
65						
66						
67						
68						
69						
70						
71						
72						
73						
74						
75						
76						
77						
78						
79						
80						
81						
82						
83						
84						
85						
86						
87						
88						
89						
90						
91						
92						
93						
94						
95						
96						
97						
98						
99						
100						

RUSKIN
AUTHORITY IN AIR CONTROL

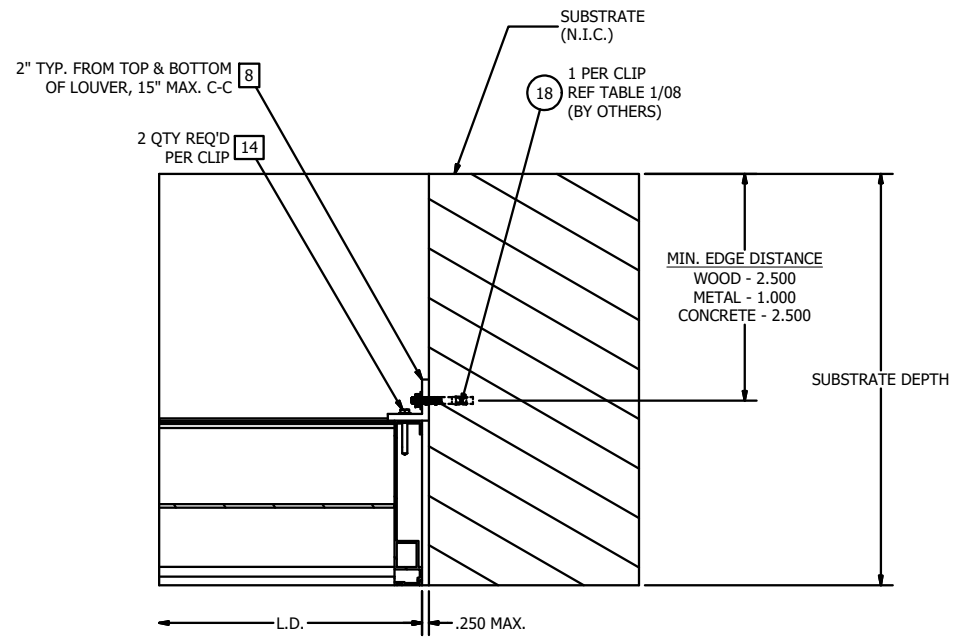
3900 Doctor Greaves Rd,
Grandview, MO 64030
PROPRIETARY AND
CONFIDENTIAL

PRODUCT: ELF637SDXD - WIND-DRIVEN RAIN RESISTANT LOUVER

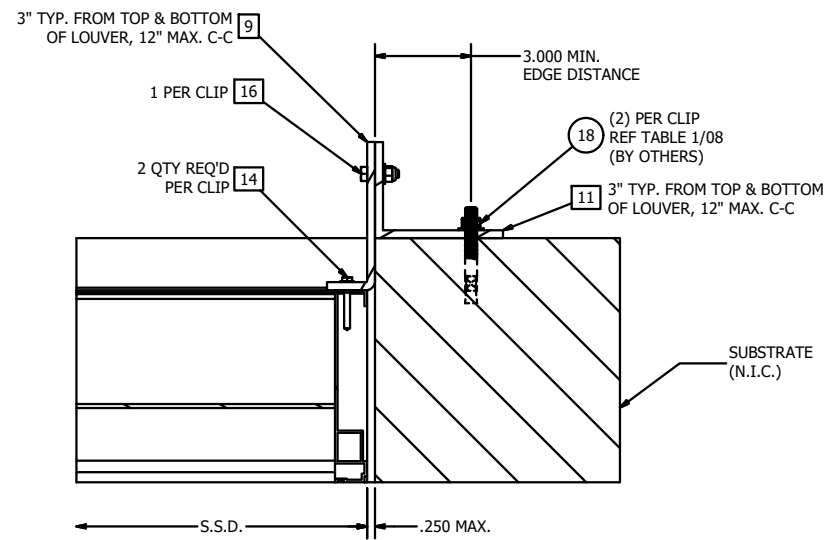
TITLE: ASSEMBLY "A" - UNIVERSAL SLEEVE INSTALL

SIZE: D DWG NO: 60-022375-00B REV: A

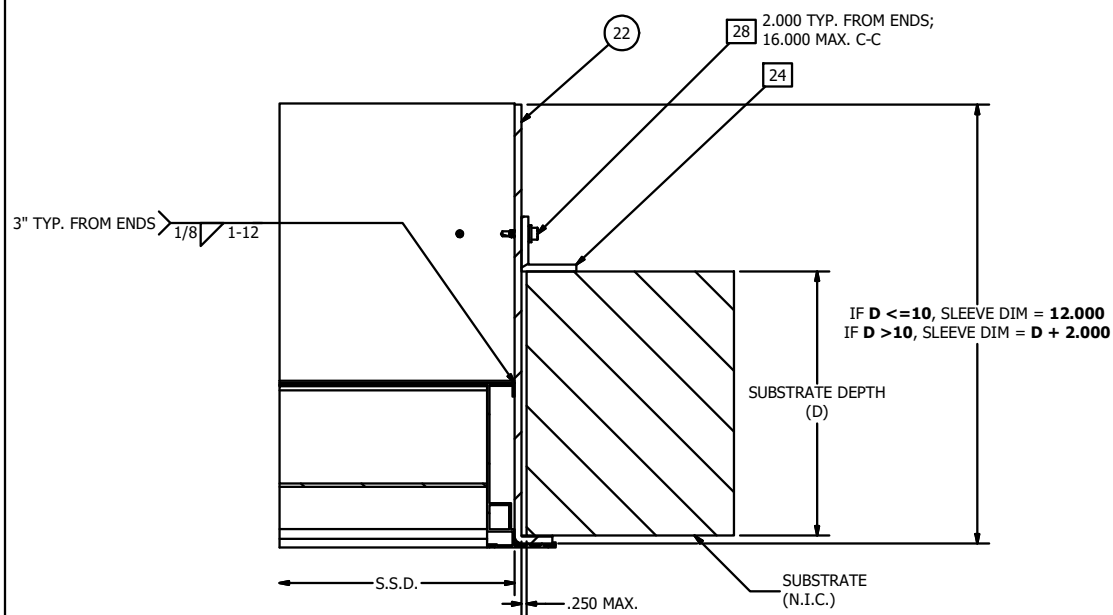
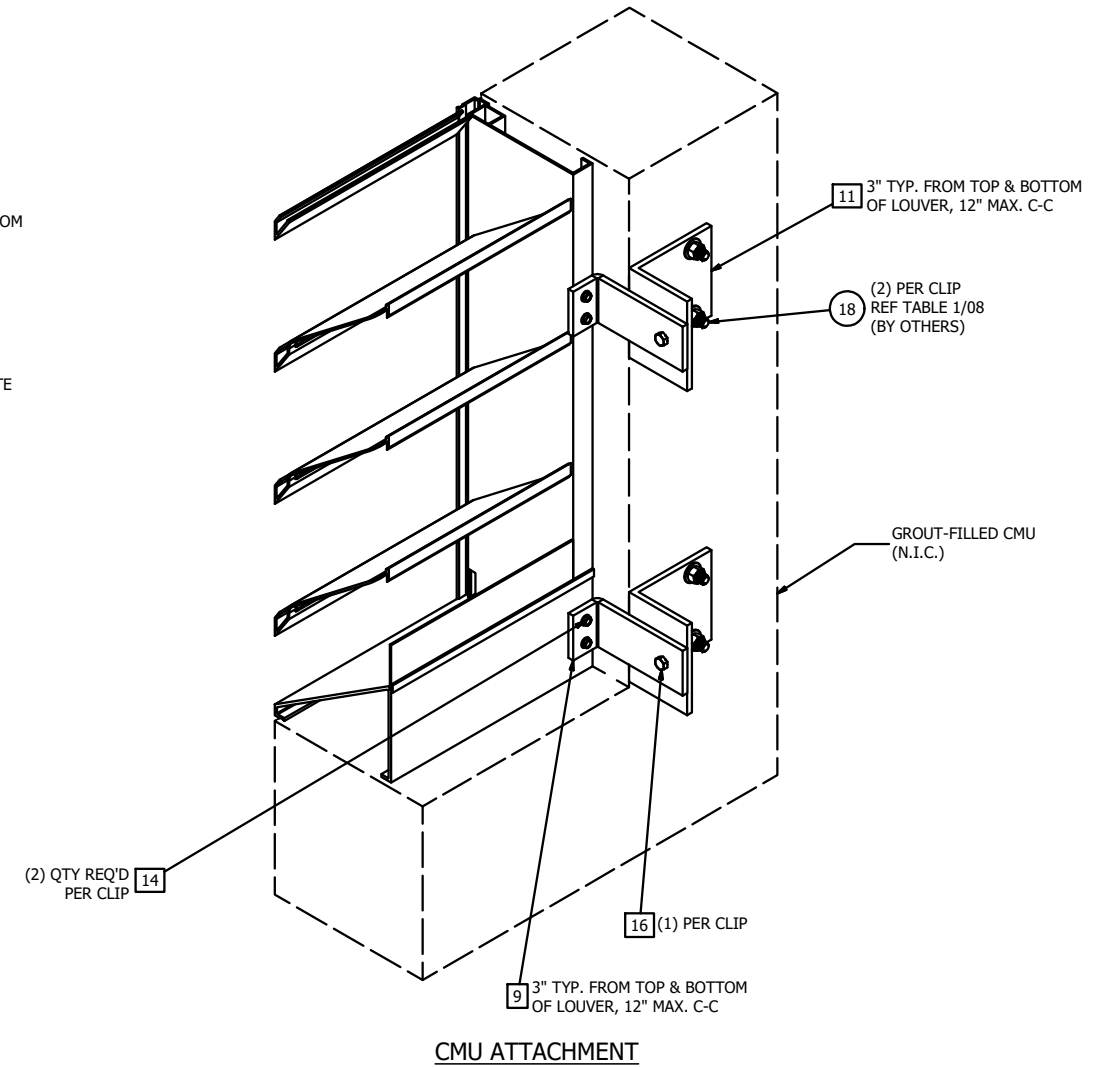
SCALE: NONE INVENTOR: SHEET 6 OF 12



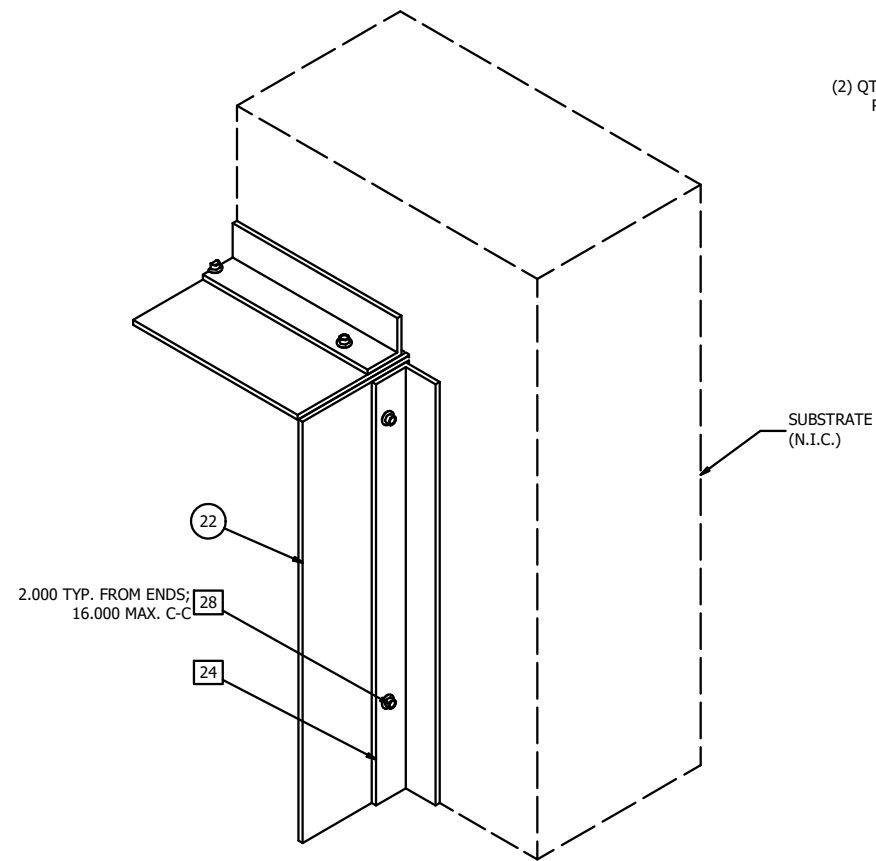
DETAIL N
ATTACHMENT CLIP ANGLE INSTALLATION @ JAMB FRAME
(WOOD, METAL & CONCRETE SUBSTRATE ONLY)



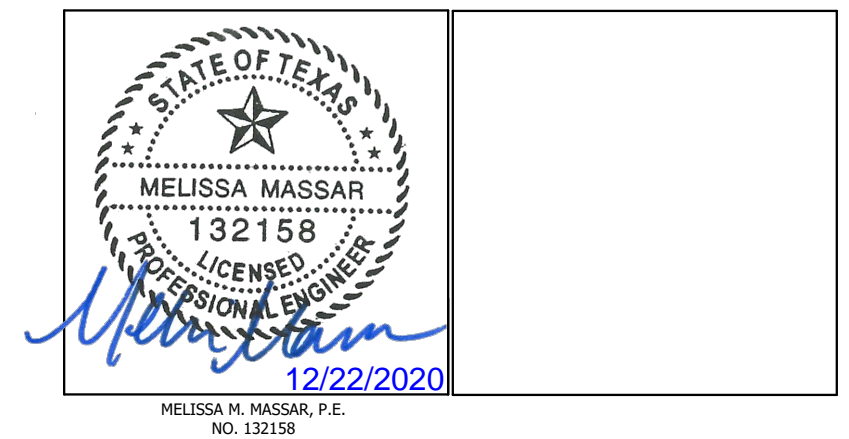
DETAIL P
ATTACHMENT CLIP ANGLE INSTALLATION @ JAMB FRAME
(GROUT-FILLED CMU)



DETAIL Q
UNIVERSAL SLEEVE WELDMENT/CONNECTION DETAIL
(JAMBS)



UNIVERSAL SLEEVE ATTACHMENT

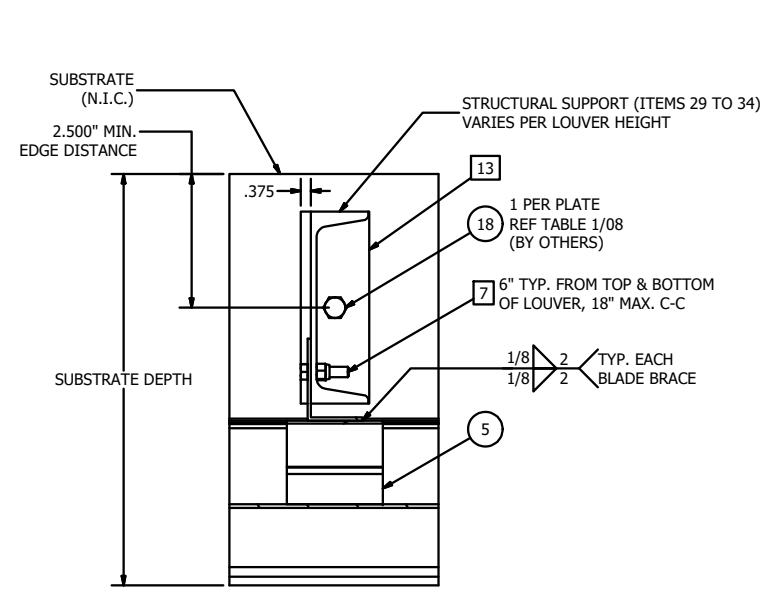


Tolerances
Unless Stated Otherwise
Use WIQ-007, WIQ-008
Fractions ±1/16
Two Decimals ±0.020
Three Decimals ±0.010
Angle Dimensions ±2'

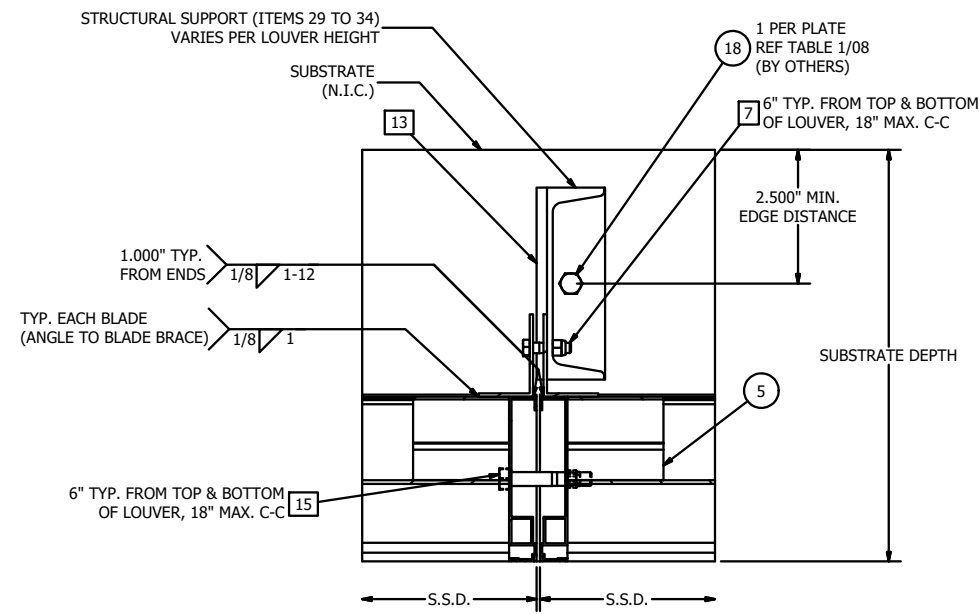
A	REV'D ENGINEER OF RECORD, UPDATED INFO.	NS	JDS	WRT	MMM	09/25/20
REV	DESCRIPTION	BY	CHK	APVD	APVD	DATE
AUTHOR	DJR	2/17/2012				
CHECKED	DRP	3/23/2012				
APPROVED	DRP	3/23/2012				
APPROVED						
MATERIAL						
TITLE		BASIC INSTALLATION DETAILS @ JAMB FRAME				
SIZE	D	DWG NO	60-022375-00B			
ECN		SCALE	NONE	INVENTOR	SHEET 7 OF 12	



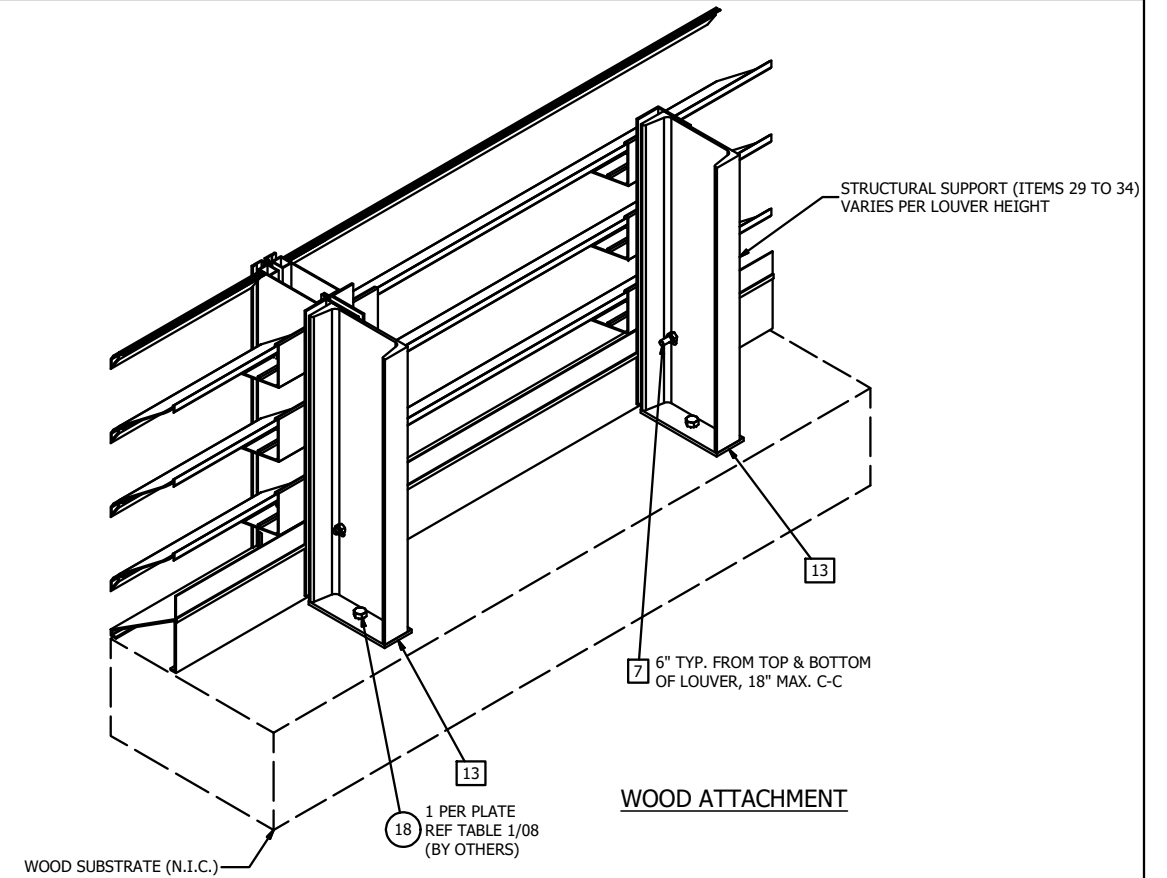
PRODUCT: ELF6375DXD - WIND-DRIVEN RAIN RESISTANT LOUVER



DETAIL R
SUPPORT ATTACHMENT PLATE INSTALLATION DETAIL @ HVBS
(WOOD SUBSTRATE ONLY)



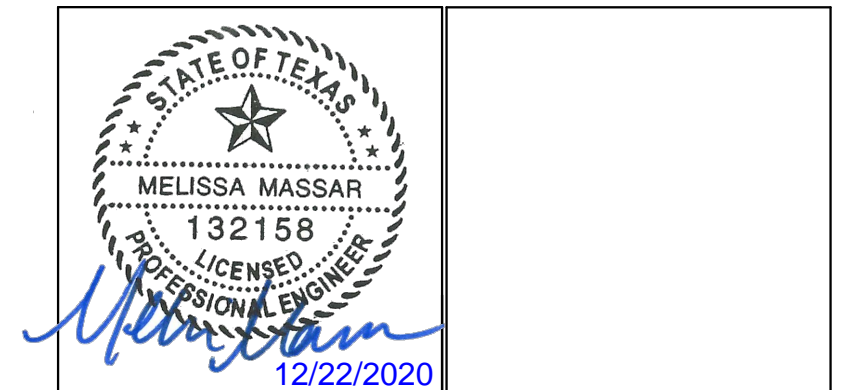
DETAIL S
SUPPORT ATTACHMENT PLATE INSTALLATION DETAIL @ MULLIONS
(WOOD SUBSTRATE ONLY)



WOOD ATTACHMENT

TABLE 01 - ELF6375DXD - WALL FASTENER TABLE (N.I.C.)

SUBSTRATE TYPE	MIN. SUBSTRATE REQUIREMENTS	LOCATION	FASTENER TYPE	MIN. EMBEDMENT	MIN. EDGE DISTANCE
WOOD	SPECIFIC GRAVITY = 0.4	JAMB	1/4" Ø BOLT, WASHER & LOCKNUT	NA	2 1/2"
		END PLATE	1/2" Ø A307 BOLT, WASHER & LOCKNUT	NA	2 1/2"
STEEL & ALUMINUM	STEEL - MIN. 14 GA ALUM. - MIN. 1/8" THICK	JAMB	1/4" Ø A307 BOLT OR TEK SCREW	NA	1"
		END PLATE	3/8" Ø A307 BOLT, LOCKNUT & WASHER	NA	1"
CONCRETE	3000 MIN. COMPRESSIVE STRENGTH	JAMB	1/4" Ø X 2 1/4" HILTI KWIK CON II+ W WASHER	1 3/4"	2 1/2"
		END PLATE	3/8" Ø HILTI KWIK BOLT TZ EXPANSION ANCHORS	2 1/2"	7 1/2"
GROUT FILLED CMU	ASTM C-90 BLOCK, 1500 PSI GROUT COMP. STRENGTH.	JAMB	1/4" Ø X 1 1/4" HILTI KWIK CON II+ (2) PER CLIP	1"	3"
		END PLATE	3/8" Ø HILTI KWIK BOLT III EXPANSION ANCHORS	2 1/2"	5"



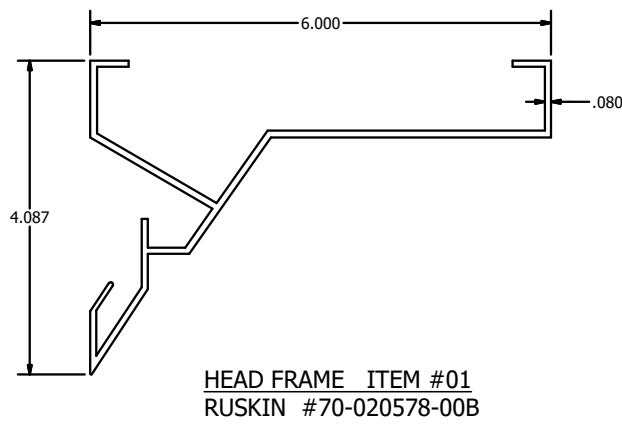
MELISSA M. MASSAR, P.E.
NO. 132158

REV	DESCRIPTION	BY	CHK	APVD	APVD	DATE
A	REV'D ENGINEER OF RECORD, UPDATED INFO.	NS	JDS	WRT	MMM	09/25/20
AUTHOR	DJR	2/17/2012				
CHECKED	DRP	3/23/2012				
APPROVED	DRP	3/23/2012				
APPROVED	DRP	3/23/2012				
MATERIAL						
TITLE	ASSEMBLY "A" (WOOD INSTALL), WALL FASTENER TABLE					
SIZE	D	DWG NO	60-022375-00B		REV	A
SCALE	NONE	INVENTOR	SHEET 8 OF 12			

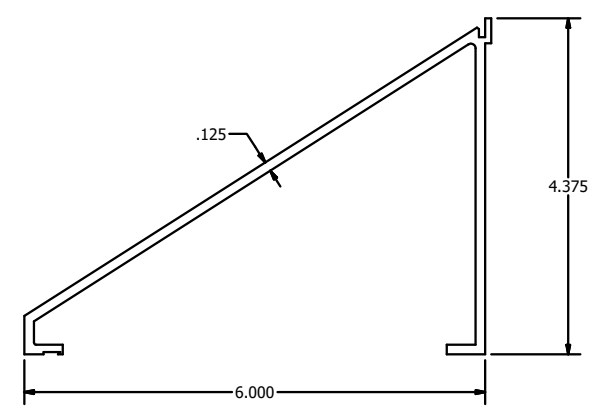
Tolerances
Unless Stated Otherwise
Use WIQ-007, WIQ-008
Fractions ±1/16
Two Decimals ±0.020
Three Decimals ±0.010
Angle Dimensions ±2'

RUSKIN
3900 Doctor Greaves Rd,
Grandview, MO 64030
PROPRIETARY AND
CONFIDENTIAL

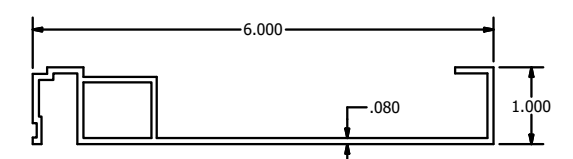
PRODUCT: ELF6375DXD - WIND-DRIVEN RAIN RESISTANT LOUVER



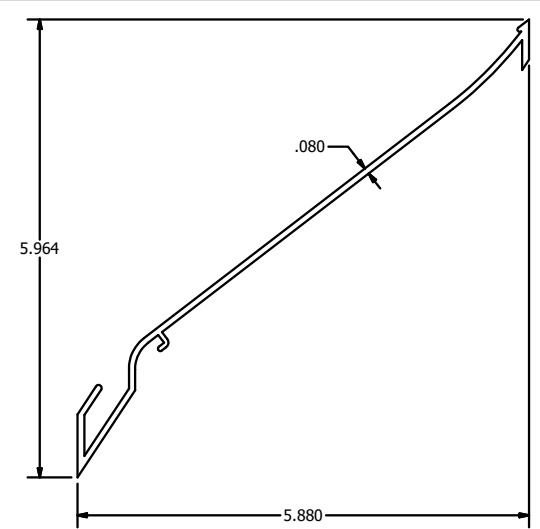
HEAD FRAME ITEM #01
RUSKIN #70-020578-00B



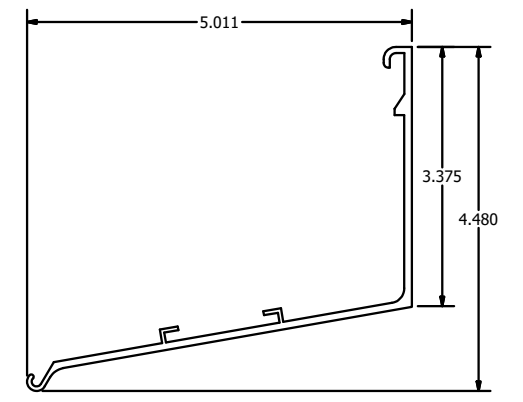
SILL FRAME ITEM #02
RUSKIN #70-021130-00B



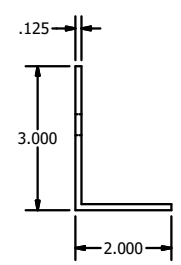
JAMB FRAME ITEM #03
RUSKIN #70-020382-00B



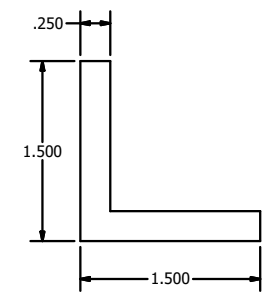
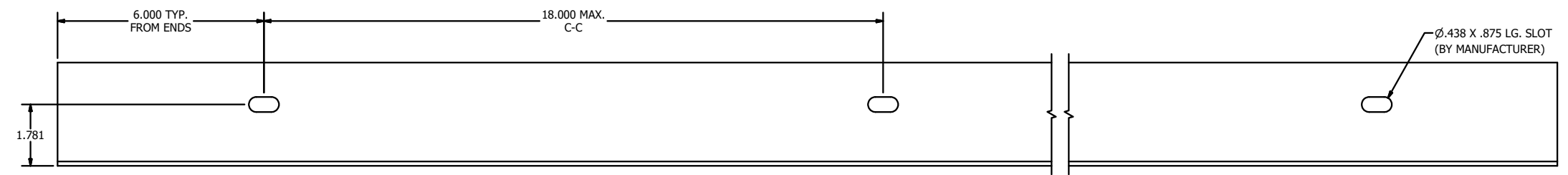
BLADE ITEM #04
RUSKIN #70-020560-00B



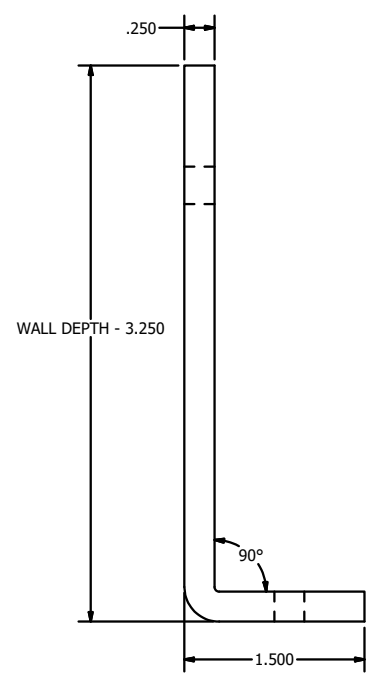
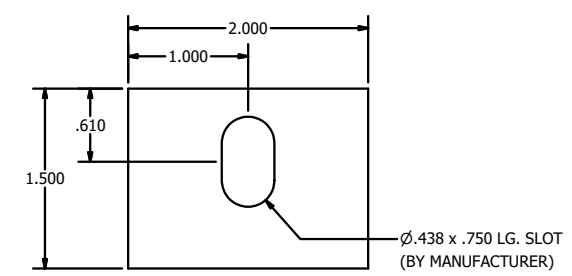
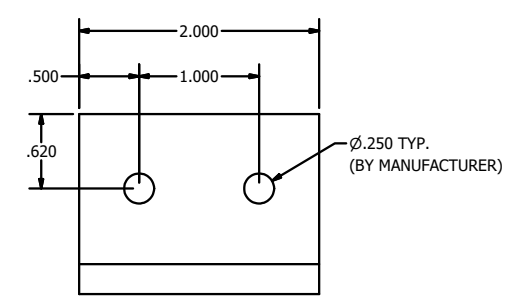
BLADE BRACE ITEM #05
RUSKIN #70-020568-00B



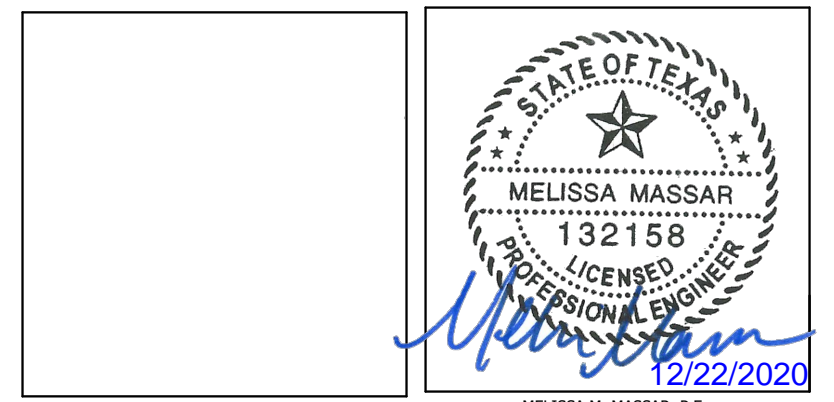
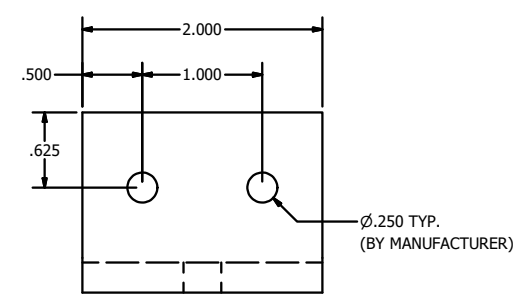
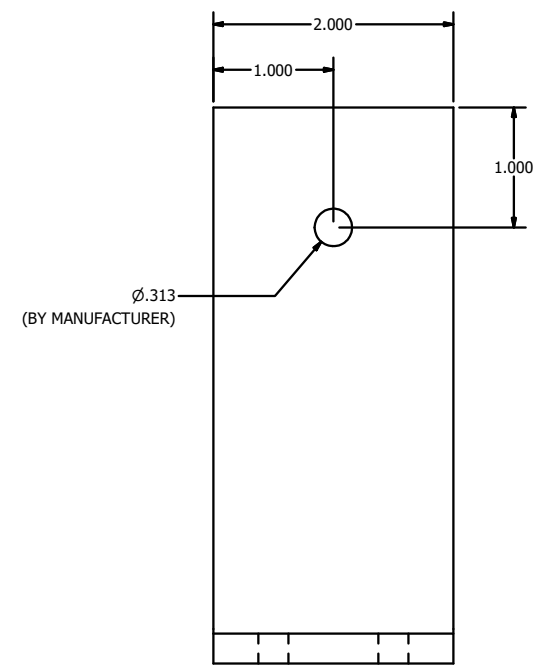
BLADE/MULLION SUPPORT ATTACHMENT ANGLE ITEM #6
RUSKIN #A1139



ATTACHMENT CLIP ANGLE ITEM #8
RUSKIN #85-021637-00B
(WOOD/METAL/CONCRETE)

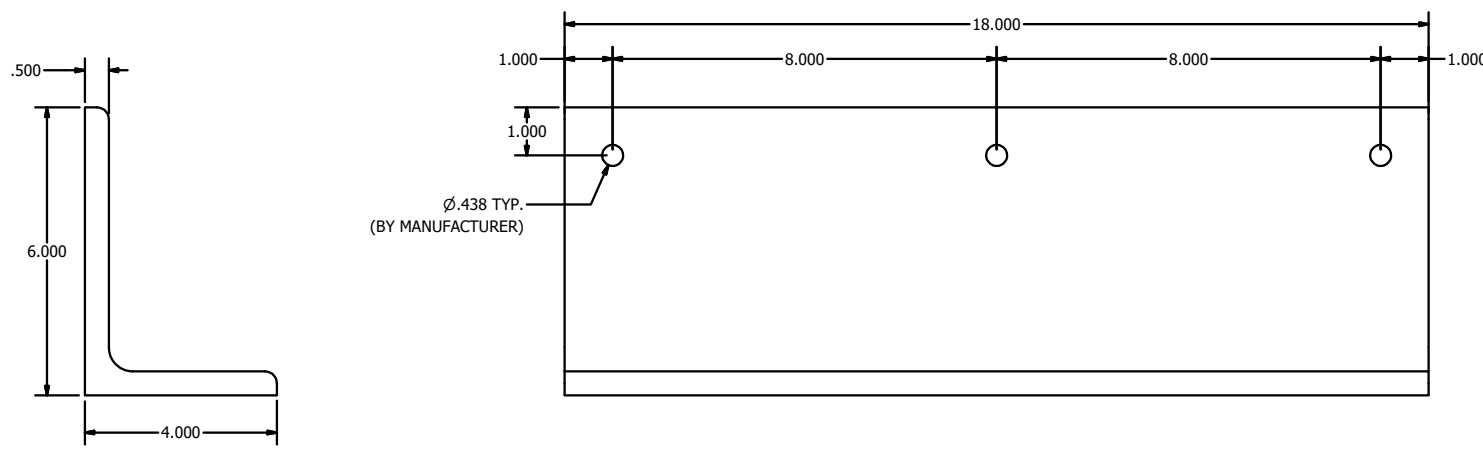


ATTACHMENT CLIP ANGLE - FORMED ITEM #9
RUSKIN #85-022236-00B
(6, 8, 10 & 12 IN GROUT-FILLED CMU)

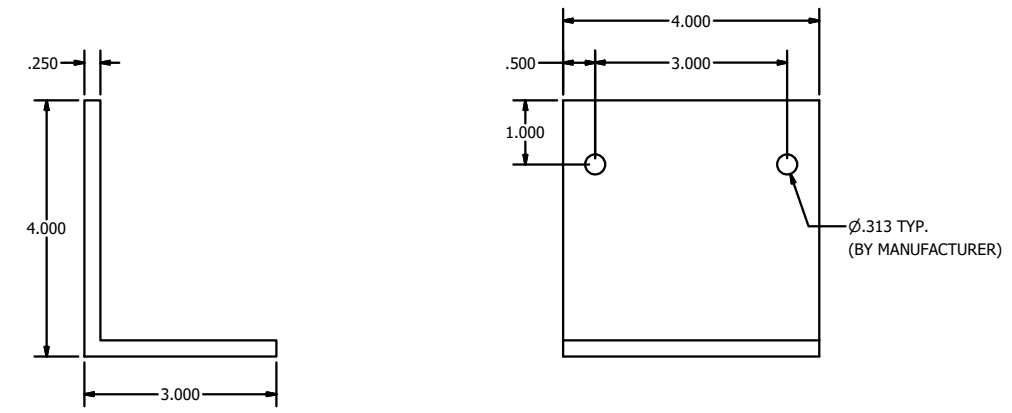


Tolerances
Unless Stated Otherwise
Use WIQ-007, WIQ-008
Fractions ±1/16
Two Decimals ±0.020
Three Decimals ±0.010
Angle Dimensions ±2'

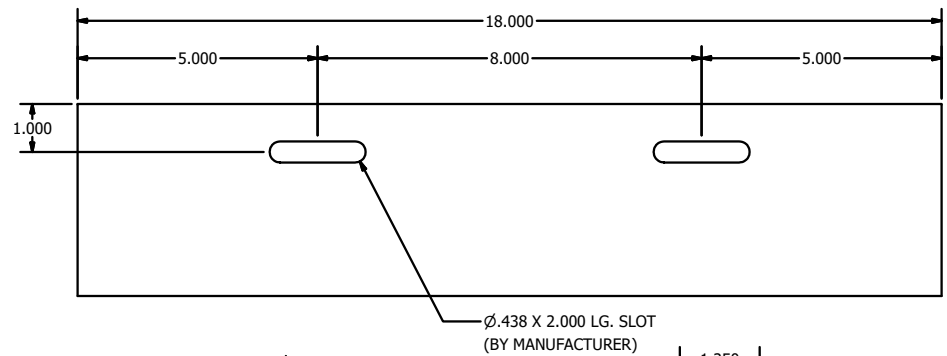
A	REV'D ENGINEER OF RECORD, UPDATED INFO.	NS	JDS	WRT	MMM	09/25/20
REV	DESCRIPTION	BY	CHK	APVD	APVD	DATE
AUTHOR	DJR	2/17/2012	3900 Doctor Greaves Rd, Grandview, MO 64030 PROPRIETARY AND CONFIDENTIAL			
CHECKED	DRP	3/23/2012	PRODUCT: ELF6375DXD - WIND-DRIVEN RAIN RESISTANT LOUVER TITLE: ELF6375DXD - PARTS			
APPROVED	DRP	3/23/2012	SIZE	DWG NO	REV	
MATERIAL			D	60-022375-00B	A	
ECN		SCALE	NONE	INVENTOR	SHEET 9 OF 12	



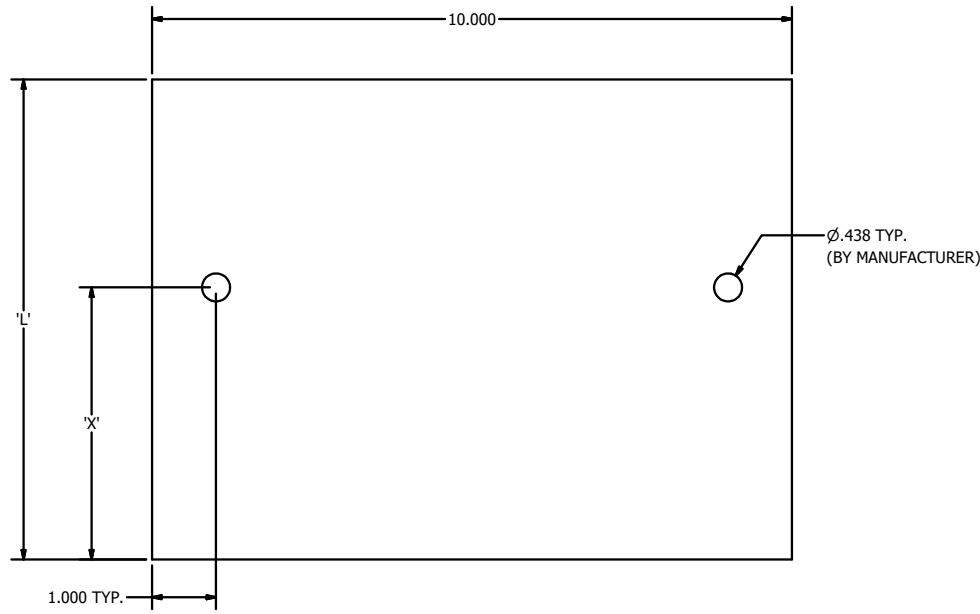
STRUCTURAL ATTACHMENT ANGLE, 18" LG. ITEM #10
 RUSKIN #85-022234-00B
 (6, 8, 10 & 12 IN GROUT-FILLED CMU)



ATTACHMENT ANGLE (CMU) ITEM #11
 RUSKIN #85-022130-00B
 (6, 8, 10 & 12 IN GROUT-FILLED CMU)

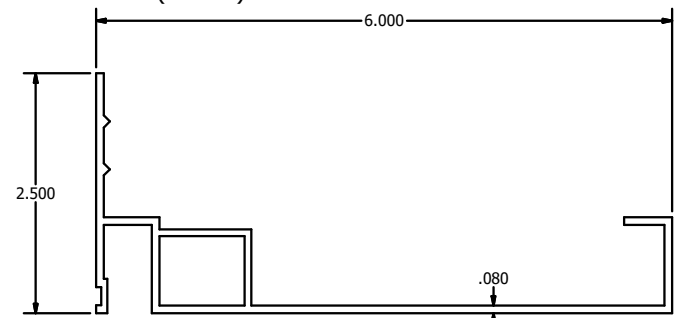
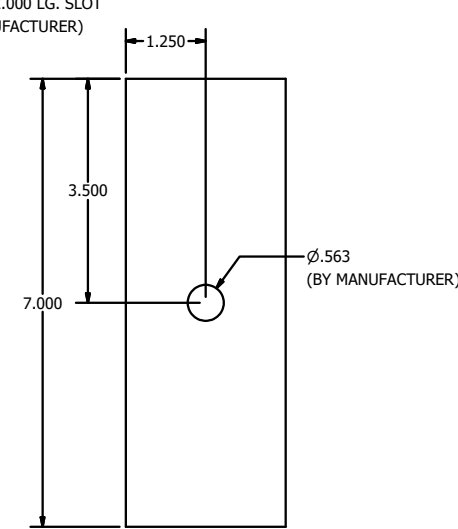


SUPPORT ATTACHMENT PLATE ITEM #13
 RUSKIN #85-023077-00B
 (WOOD)

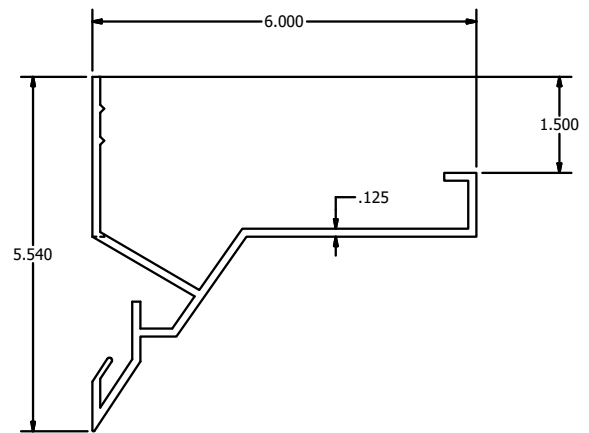


SUPPORT ATTACHMENT PLATE ITEM #12
 RUSKIN #85-022233-00B
 (METAL/CONCRETE/GROUT-FILLED CMU)

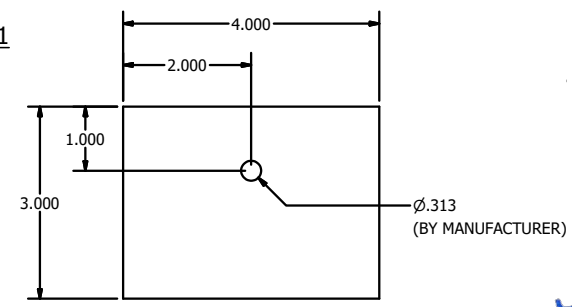
SUPPORT ATTACHMENT PLATE DIMENSION TABLE		
WALL TYPE	'L'	'X'
METAL/CONCRETE	7.500	2.750
6" CMU	7.500	2.250
8" CMU	7.500	4.250
10" CMU	7.500	6.250
12" CMU	9.500	8.250



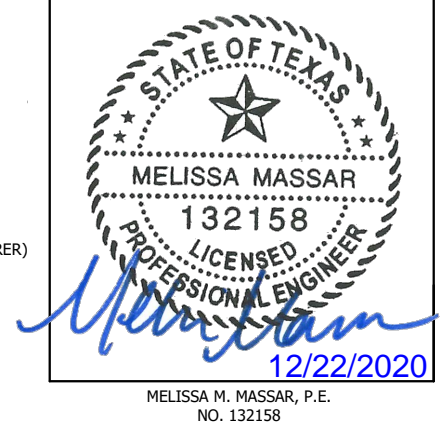
JAMB FRAME W/INTEGRAL FLANGE ITEM #21
 RUSKIN #70-020470-00B



HEAD FRAME W/INTEGRAL FLANGE ITEM #19
 RUSKIN #70-020838-00B



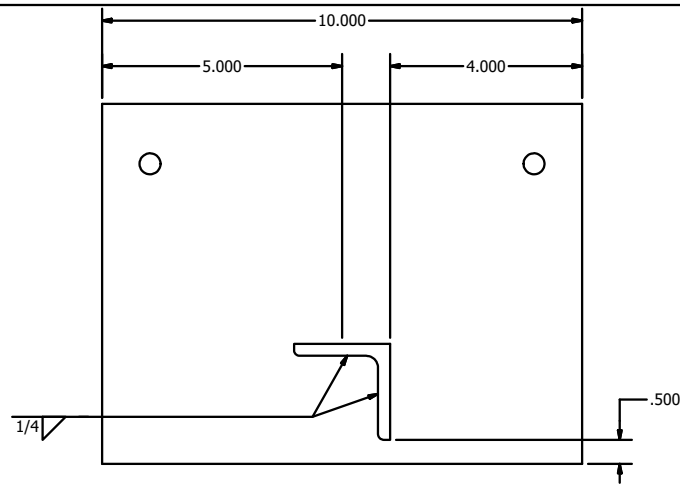
SILL FRAME W/INTEGRAL FLANGE ITEM #20
 RUSKIN #70-021129-00B



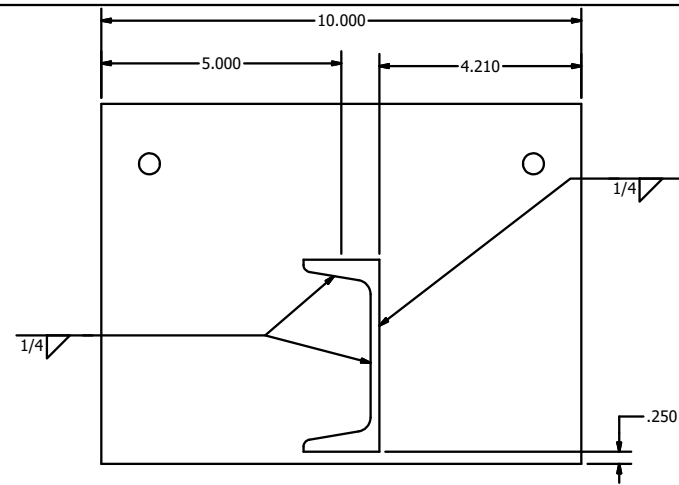
Tolerances:
 Unless Stated Otherwise
 Use WIQ-007, WIQ-008
 Fractions ±1/16
 Two Decimals ±0.020
 Three Decimals ±0.010
 Angle Dimensions ±2'

REV	DESCRIPTION	BY	CHK	APVD	APVD	DATE
A	REV'D ENGINEER OF RECORD, UPDATED INFO.	NS	JDS	WRT	MMM	09/25/20
1	DJR	2/17/2012				
2	DRP	3/23/2012				
3	DRP	3/23/2012				

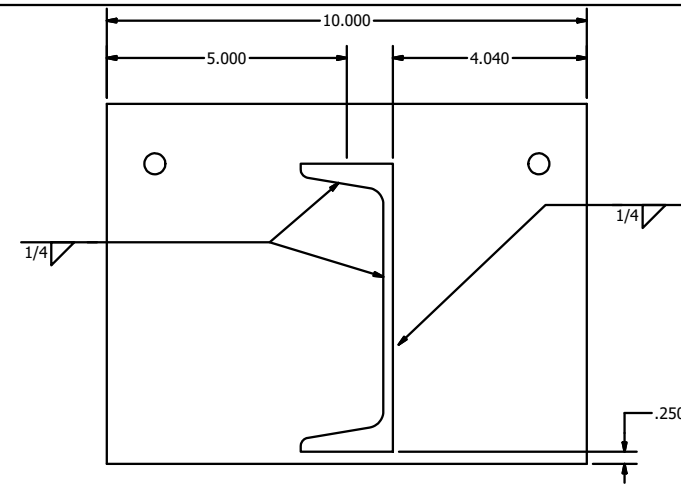
		3900 Doctor Greaves Rd, Grandview, MO 64030 PROPRIETARY AND CONFIDENTIAL	
PRODUCT: ELF6375DXD - WIND-DRIVEN RAIN RESISTANT LOUVER		TITLE: ELF6375DXD - PARTS	
SIZE	D	DWG NO	60-022375-00B
SCALE	NONE	INVENTOR	SHEET 10 OF 12



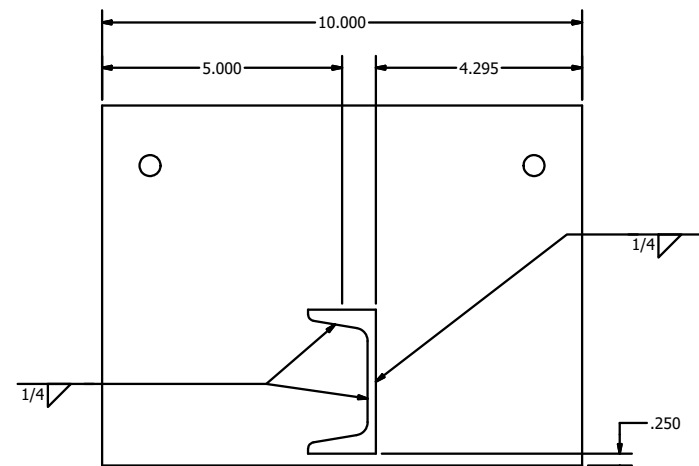
2X2X1/4 ANGLE W SUPPORT ATTACHMENT PLATE



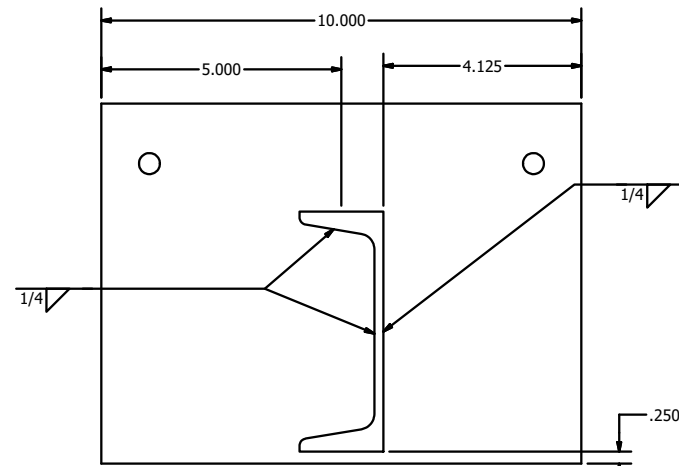
C4X5.4 CHANNEL W SUPPORT ATTACHMENT PLATE



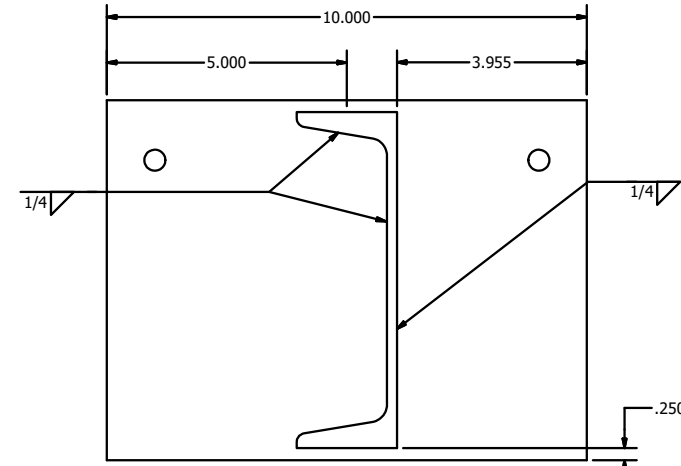
C6X8.2 CHANNEL W SUPPORT ATTACHMENT PLATE



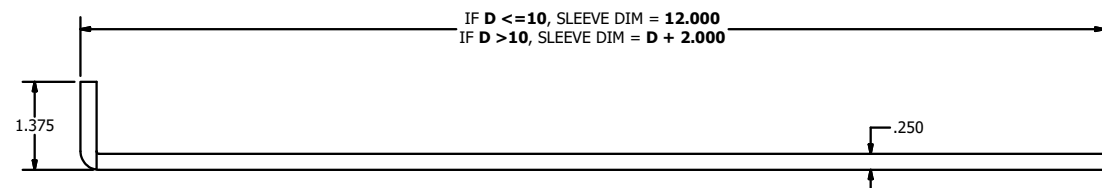
C3X4.1 CHANNEL W SUPPORT ATTACHMENT PLATE



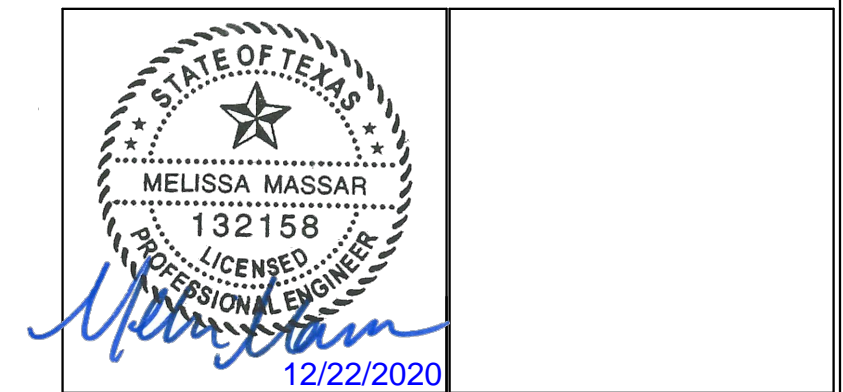
C5X6.7 CHANNEL W SUPPORT ATTACHMENT PLATE



C7X9.8 CHANNEL W SUPPORT ATTACHMENT PLATE



FRONT FLANGE UNIVERSAL SLEEVE ITEM #22



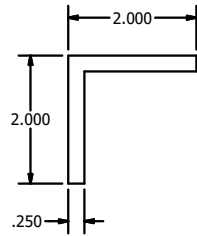
MELISSA M. MASSAR, P.E.
NO. 132158

A	REV'D ENGINEER OF RECORD, UPDATED INFO.	NS	JDS	WRT	MMM	09/25/20
REV	DESCRIPTION	BY	CHK	APVD	APVD	DATE
AUTHOR	DJR	2/17/2012				
CHECKED	DRP	3/23/2012				
APPROVED	DRP	3/23/2012				
APPROVED						
MATERIAL						
TITLE		ELF6375DXD - PARTS				
SIZE	D	DWG NO	60-022375-00B		REV	A
ECN		SCALE	NONE	INVENTOR	SHEET 11 OF 12	

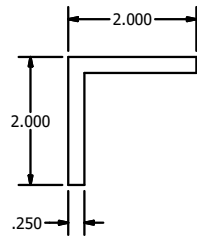
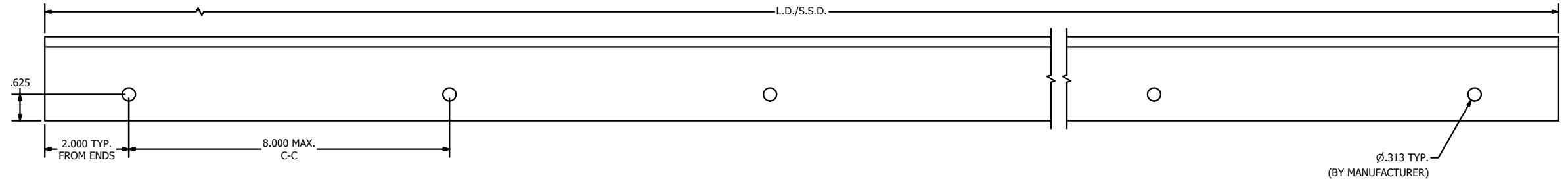
Tolerances
Unless Stated Otherwise
Use WIQ-007, WIQ-008
Fractions ±1/16
Two Decimals ±0.020
Three Decimals ±0.010
Angle Dimensions ±2'

RUSKIN
AUTHORITY IN AIR CONTROL
3900 Doctor Greaves Rd,
Grandview, MO 64030
PROPRIETARY AND
CONFIDENTIAL

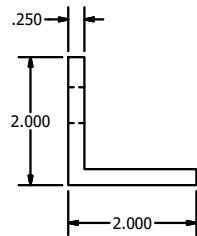
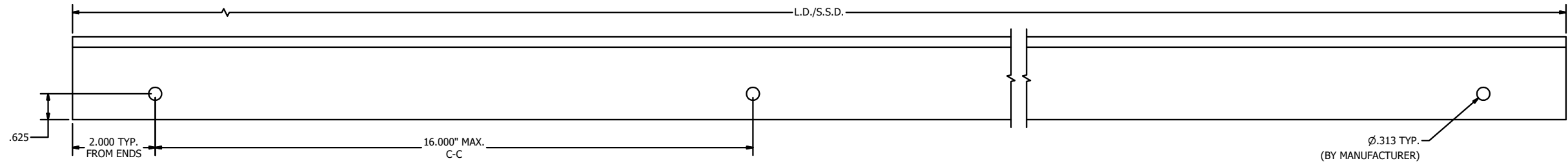
PRODUCT: ELF6375DXD - WIND-DRIVEN RAIN RESISTANT LOUVER



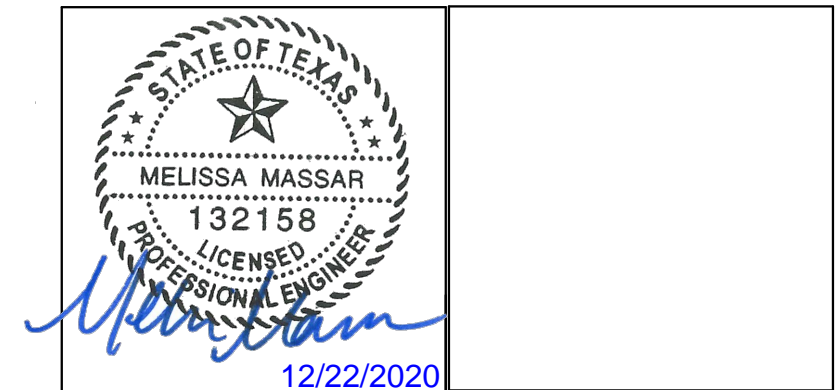
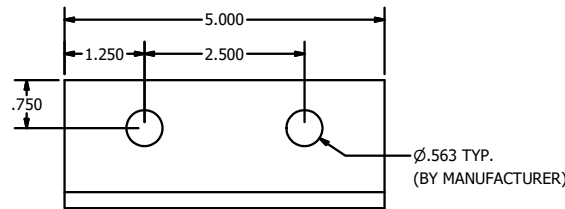
CONT. RETAINING ANGLE @ HEAD/SILL ITEM #23
RUSKIN #85-023096-00B



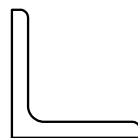
CONT. RETAINING ANGLE @ JAMBS ITEM #24
RUSKIN #85-023097-00B



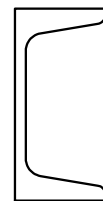
US - SUPPORT ATTACHMENT ANGLE ITEM #25
RUSKIN #85-022237-00B



MELISSA M. MASSAR, P.E.
NO. 132158



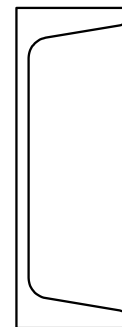
ANGLE 2 X 2 X 1/4 ITEM#29



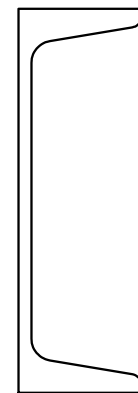
C3X4.1 ITEM #30



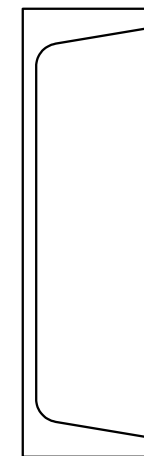
C4X5.4 ITEM #31



C5X6.7 ITEM #32



C6X8.2 ITEM #33



C7X9.8 ITEM #34

Tolerances
Unless Stated Otherwise
Use WIQ-007, WIQ-008
Fractions ±1/16
Two Decimals ±0.020
Three Decimals ±0.010
Angle Dimensions ±2'

A	REV'D ENGINEER OF RECORD, UPDATED INFO.	NS	JDS	WRT	MMM	09/25/20
REV	DESCRIPTION	BY	CHK	APVD	APVD	DATE
AUTHOR	DJR	2/17/2012	 3900 Doctor Greaves Rd, Grandview, MO 64030 PROPRIETARY AND CONFIDENTIAL			
CHECKED	DRP	3/23/2012	PRODUCT: ELF6375DXD - WIND-DRIVEN RAIN RESISTANT LOUVER TITLE: ELF6375DXD - PARTS			
APPROVED	DRP	3/23/2012	SIZE	DWG NO	REV	
			D	60-022375-00B	A	
MATERIAL		SCALE	NONE	INVENTOR	SHEET 12 OF 12	