

# KAWNEER COMPANY, INC.

## TRIFAB 601T STOREFRONT (IMPACT)



555 GUTHRIDGE CT  
NORCROSS, GA 30092  
PH: (770) 840-6431

TITLE: TRIFAB 601T STOREFRONT  
(IMPACT)

INSTALLATION & GENERAL NOTES

PREPARED BY:  
**BUILDING DROPS, INC.**  
398 E. DANIA BEACH BLVD., STE. 338  
DANIA BEACH, FL 33004  
PH: (954) 399-8478  
FAX: (954) 744-4738  
WEB: www.buildingdrops.com

**INSTALLATION NOTES:**

- ONE (1) INSTALLATION ANCHOR IS REQUIRED AT EACH ANCHOR LOCATION SHOWN.
- THE NUMBER OF INSTALLATION ANCHORS DEPICTED IS THE MINIMUM NUMBER OF ANCHORS TO BE USED FOR PRODUCT INSTALLATION.
- INSTALL INDIVIDUAL INSTALLATION ANCHORS WITHIN A TOLERANCE OF ±1/2 INCH OF THE DEPICTED LOCATION IN THE ANCHOR LAYOUT DETAIL (I.E., WITHOUT CONSIDERATION OF TOLERANCES). TOLERANCES ARE NOT CUMULATIVE FROM ONE INSTALLATION ANCHOR TO THE NEXT.
- SHIM AS REQUIRED AT EACH INSTALLATION ANCHOR WITH LOAD BEARING SHIM(S). MAXIMUM ALLOWABLE SHIM STACK TO BE 3/8 INCH. SHIM WHERE SPACE OF 1/16 INCH OR GREATER OCCURS. SHIM(S) SHALL BE CONSTRUCTED OF HIGH DENSITY PLASTIC OR BETTER.
- MINIMUM EMBEDMENT AND EDGE DISTANCE EXCLUDE WALL FINISHES, INCLUDING BUT NOT LIMITED TO STUCCO, FOAM, BRICK VENEER, AND SIDING.
- INSTALLATION ANCHORS AND ASSOCIATED HARDWARE MUST BE MADE OF CORROSION RESISTANT MATERIAL OR HAVE A CORROSION RESISTANT COATING.
- FOR HOLLOW BLOCK AND GROUT FILLED BLOCK, DO NOT INSTALL INSTALLATION ANCHORS INTO MORTAR JOINTS. EDGE DISTANCE IS MEASURED FROM FREE EDGE OF BLOCK OR EDGE OF MORTAR JOINT INTO FACE SHELL OF BLOCK.
- FOR MASONRY OR CONCRETE OPENINGS, A 1X WOOD BUCK MAY BE USED (OPTIONAL) AS LONG AS THE MINIMUM EMBEDMENT AND EDGE DISTANCE REQUIREMENTS ARE STILL MET WITHIN THE CORRESPONDING HOST SUBSTRATE. SEE GENERAL NOTE #3 ON SHEET 1 FOR MORE INFORMATION.
- INSTALLATION ANCHORS SHALL BE INSTALLED IN ACCORDANCE WITH ANCHOR MANUFACTURER'S INSTALLATION INSTRUCTIONS, AND ANCHORS SHALL NOT BE USED IN SUBSTRATES WITH STRENGTHS LESS THAN THE MINIMUM STRENGTH SPECIFIED BY THE ANCHOR MANUFACTURER.
- INSTALLATION ANCHOR CAPACITIES FOR PRODUCTS HEREIN ARE BASED ON SUBSTRATE MATERIALS WITH THE FOLLOWING PROPERTIES:
  - WOOD - MINIMUM SPECIFIC GRAVITY OF 0.42.
  - CONCRETE - MINIMUM COMPRESSIVE STRENGTH OF 3000 PSI.
  - MASONRY - STRENGTH CONFORMANCE TO ASTM C-90, WITH MINIMUM COMPRESSIVE STRENGTH OF 2000 PSI.
  - STEEL - MINIMUM YIELD STRENGTH OF 36 KSI. MINIMUM 12 GA. WALL THICKNESS.
  - ALUMINUM - MINIMUM 1/8 INCH THICK 6063-T5 ALUMINUM.

**GENERAL NOTES:**

- THE PRODUCT SHOWN HEREIN IS DESIGNED AND MANUFACTURED TO COMPLY WITH THE 2018 IBC, IRC AND HAS BEEN EVALUATED ACCORDING TO THE FOLLOWING:
  - AAMA 501-15
  - AAMA 1304-05
  - ASTM E283-04(12)
  - ASTM E330-14
  - ASTM E331-00(09)
  - ASTM E1886-13a
  - ASTM E1996-14a
- ADEQUACY OF THE EXISTING STRUCTURAL CONCRETE/MASONRY, 2X FRAMING AND METAL STUD FRAMING AS A MAIN WIND FORCE RESISTING SYSTEM CAPABLE OF WITHSTANDING AND TRANSFERRING APPLIED PRODUCT LOADS TO THE FOUNDATION IS THE RESPONSIBILITY OF THE ENGINEER OR ARCHITECT OF RECORD FOR THE PROJECT OF INSTALLATION.
- 1X AND 2X BUCKS (WHEN USED) SHALL BE DESIGNED AND ANCHORED TO PROPERLY TRANSFER ALL LOADS TO THE STRUCTURE. BUCK DESIGN AND INSTALLATION IS THE RESPONSIBILITY OF THE ENGINEER OR ARCHITECT OF RECORD FOR THE PROJECT OF INSTALLATION.
- THE INSTALLATION DETAILS DESCRIBED HEREIN ARE GENERIC AND MAY NOT REFLECT ACTUAL CONDITIONS FOR A SPECIFIC SITE. IF SITE CONDITIONS CAUSE INSTALLATION TO DEVIATE FROM THE REQUIREMENTS DETAILED HEREIN, A LICENSED ENGINEER OR ARCHITECT SHALL PREPARE SITE SPECIFIC DOCUMENTS FOR USE WITH THIS DOCUMENT.
- APPROVED IMPACT PROTECTIVE SYSTEM **IS NOT REQUIRED** ON THIS PRODUCT IN AREAS REQUIRING IMPACT RESISTANCE ON WIND ZONE 3 OR LESS.
- APPROVED IMPACT PROTECTIVE SYSTEM **IS REQUIRED** ON THIS PRODUCT IN AREAS REQUIRING IMPACT RESISTANCE ON WIND ZONE 4.
- FRAME MATERIAL: ALUMINUM 6063-T6
- ALL STRUCTURAL MATERIALS & DISSIMILAR METALS SHALL BE PROTECTED, TREATED, PAINTED, COATED, AND/OR ISOLATED AS REQUIRED IN THE APPLICABLE SECTIONS OF THE 2018 INTERNATIONAL BUILDING CODE AND REFERENCED DESIGN SPECIFICATIONS.
- GLASS MEET THE REQUIREMENTS OF ASTM E 1300 GLASS CHARTS. SEE SHEET 9 FOR GLAZING DETAILS.
- DOOR CONFIGURATIONS MAY UTILIZE BUTT HINGES AS DESCRIBED HEREIN OR CONTINUOUS HINGES INTERCHANGEABLY.
- ALLOWABLE CONFIGURATIONS: X (SINGLE DOOR) OR XX (DOUBLE DOOR) WITH OR WITHOUT TRANSOMS.

TABLE OF CONTENTS	
SHEET	SHEET DESCRIPTION
1	INSTALLATION & GENERAL NOTES
2	ELEVATIONS AND ANCHOR DETAILS
3	TYPICAL CONFIGURATIONS & ELEVATIONS
4	TYPICAL CONFIGURATIONS & ANCHOR LAYOUT
5	VERTICAL SECTIONS
6	VERTICAL SECTIONS
7	HORIZONTAL SECTIONS
8	MULLION DESIGN PRESSURE TABLES
9	GLAZING DETAILS
10	BILL OF MATERIALS & COMPONENTS

**INSTRUCTIONS:**

- STEP 1:** DETERMINE DESIGN WIND LOAD REQUIREMENT BASED ON WIND VELOCITY BLDG. HEIGHT, WIND ZONE USING APPLICABLE ASCE 7 STANDARD.
- STEP 2:** SEE CHARTS ON SHEET 9 FOR DESIGN LOAD CAPACITY OF DESIRED GLASS SIZE
- STEP 3:** CHECK MULLION CAPACITY FOR A GIVEN SPACING AND HEIGHT SINGLE SPAN ON SHEET 8
- STEP 4:** THE LOWEST VALUE RESULTING FROM STEP 2 AND 3 SHALL APPLY TO ENTIRE SYSTEM

REMARKS	BY	DATE

THE INSTALLATION DETAILS DESCRIBED HEREIN ARE GENERIC AND MAY NOT REFLECT ACTUAL CONDITIONS FOR A SPECIFIC SITE. IF SITE CONDITIONS CAUSE INSTALLATION TO DEVIATE FROM THE REQUIREMENTS DETAILED HEREIN, A LICENSED ENGINEER OR ARCHITECT SHALL PREPARE SITE SPECIFIC DOCUMENTS FOR USE WITH THIS DOCUMENT



HERMES F. NORERO, P.E.  
TEXAS P.E. No. 118471  
BUILDING DROPS, INC.  
398 E. DANIA BEACH BLVD. # 338  
DANIA BEACH, FL 33004  
TBPE FIRM No. 13734

DATE: **02.11.21**

DWG. BY: **ER**      CHK. BY: **HFN**

SCALE: **NTS**

DWG. #: **KAW017**

SHEET: **1** OF 10

3/21/2022 4:22 PM s:\projects\kawneer company\tdr-21-0118 -tdl-submittal\dwgs\1161517\kaw017.dwg

TITLE: TRIFAB 601T STOREFRONT  
(IMPACT)  
ELEVATIONS & ANCHOR LAYOUT

PREPARED BY:  
**BUILDING DROPS, INC.**  
398 E. DANIA BEACH BLVD., STE. 338  
DANIA BEACH, FL 33004  
PH: (954) 399-8478  
FAX: (954) 744-4738  
WEB: www.buildingdrops.com



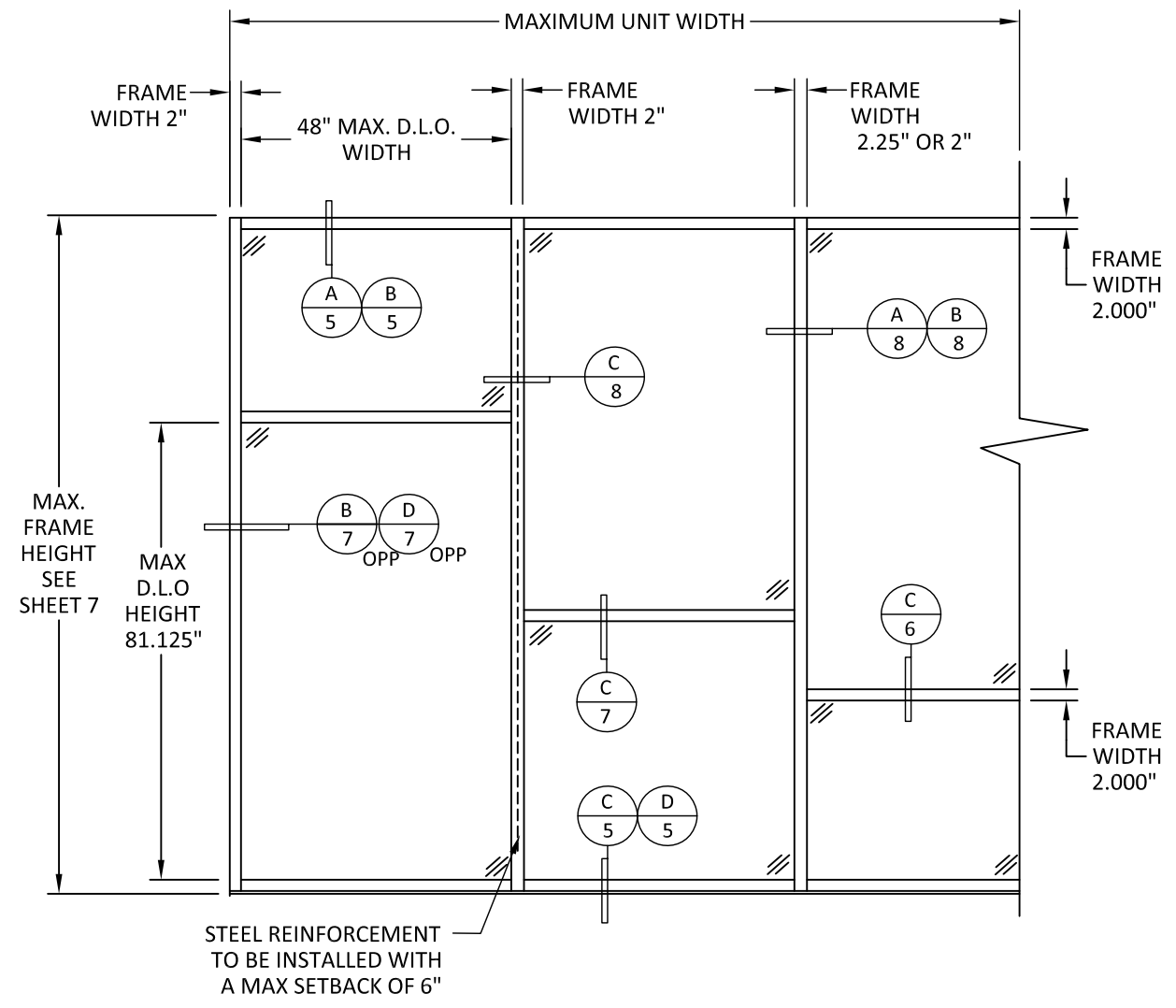
REMARKS	BY	DATE

THE INSTALLATION DETAILS DESCRIBED HEREIN ARE GENERIC AND MAY NOT REFLECT ACTUAL CONDITIONS FOR A SPECIFIC SITE. IF SITE CONDITIONS CAUSE INSTALLATION TO DEVIATE FROM THE REQUIREMENTS DETAILED HEREIN, A LICENSED ENGINEER OR ARCHITECT SHALL PREPARE SITE SPECIFIC DOCUMENTS FOR USE WITH THIS DOCUMENT

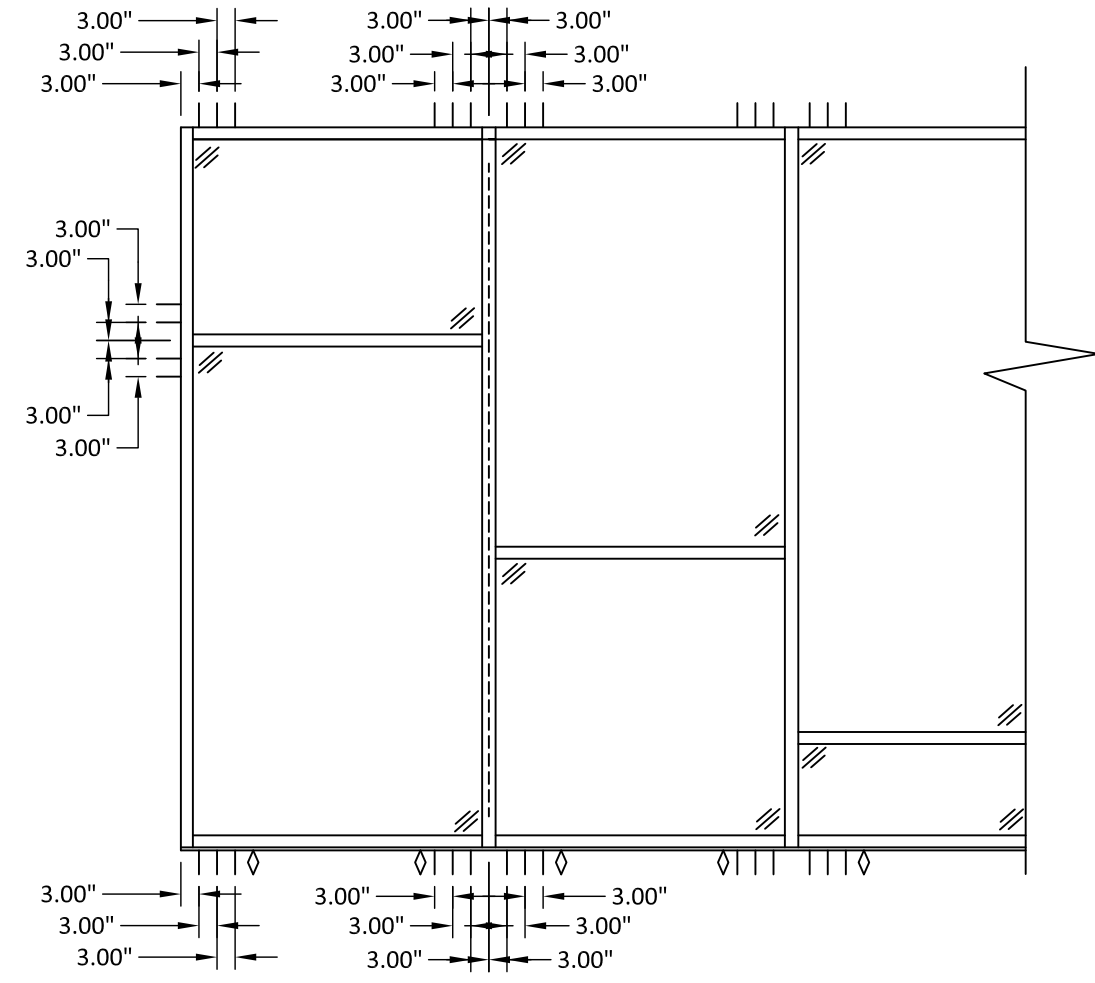


HERMES F. NORERO, P.E.  
TEXAS P.E. No 118471  
BUILDING DROPS, INC  
398 E. DANIA BEACH BLVD. # 338  
DANIA BEACH, FL 33004  
TBPE FIRM No. 13734

DATE:	02.11.21
DWG. BY:	ER
CHK. BY:	HFN
SCALE:	NTS
DWG. #:	KAW017
SHEET:	2



**ELEVATION**  
STORE FRONT SYSTEM



**ANCHOR LAYOUT**  
STORE FRONT SYSTEM

UNITS WITHOUT INTERMEDIATED MEMBER DON'T  
REQUIRED ANCHORS AT JAMBS  
◇ = EXTRA ANCHOR FOR WOOD SUBSTRATE

ANCHOR SCHEDULE				
ANCHOR DESCRIPTION	SUBSTRATE REQUIREMENTS	MIN. EMBEDMENT	MIN. EDGE DISTANCE	NOTES
#14 WOOD SCREW	MIN. S.G.= 0.42 WOOD	1-1/2"	1"	-
1/4" CONCRETE SCREW	CONCRETE F'C=3000 PSI MIN.	1-1/4"	2-1/2"	ELCO ULTRACONS, ITW RED-HEADS, HILTI KWIK-CON II.
1/4" CONCRETE SCREW	C-90 HOLLOW/FILLED BLOCK AT JAMBS F'M=2000 PSI MIN.	1-3/4"	2-1/2"	ELCO ULTRACONS, ITW RED-HEADS, HILTI KWIK-CON II.
1/4" DIA. SELF-DRILLING SCREWS (GRADE 5)	STEEL: 12 GA. MIN., Fy=36KSI MIN. ALUM: 1/8" MIN, 6063-T5 MIN	3 THREADS PENETRATION BEYOND METAL STRUCTURE	3/4"	STEEL IN CONTACT WITH ALUM. TO BE PLATED OR PAINTED

3/21/2022 4:22 PM

s:\projects\kawneer company\tdr-21-0118 -tdi-submittal\dwgs\116517\kaw017.dwg

TITLE: TRIFAB 601T STOREFRONT  
(IMPACT)

TYPICAL CONFIGURATIONS  
& ELEVATIONS

PREPARED BY:  
**BUILDING DROPS, INC.**  
398 E. DANIA BEACH BLVD., STE. 338  
DANIA BEACH, FL 33004  
PH: (954) 399-8478  
FAX: (954) 744-4738  
WEB: www.buildingdrops.com



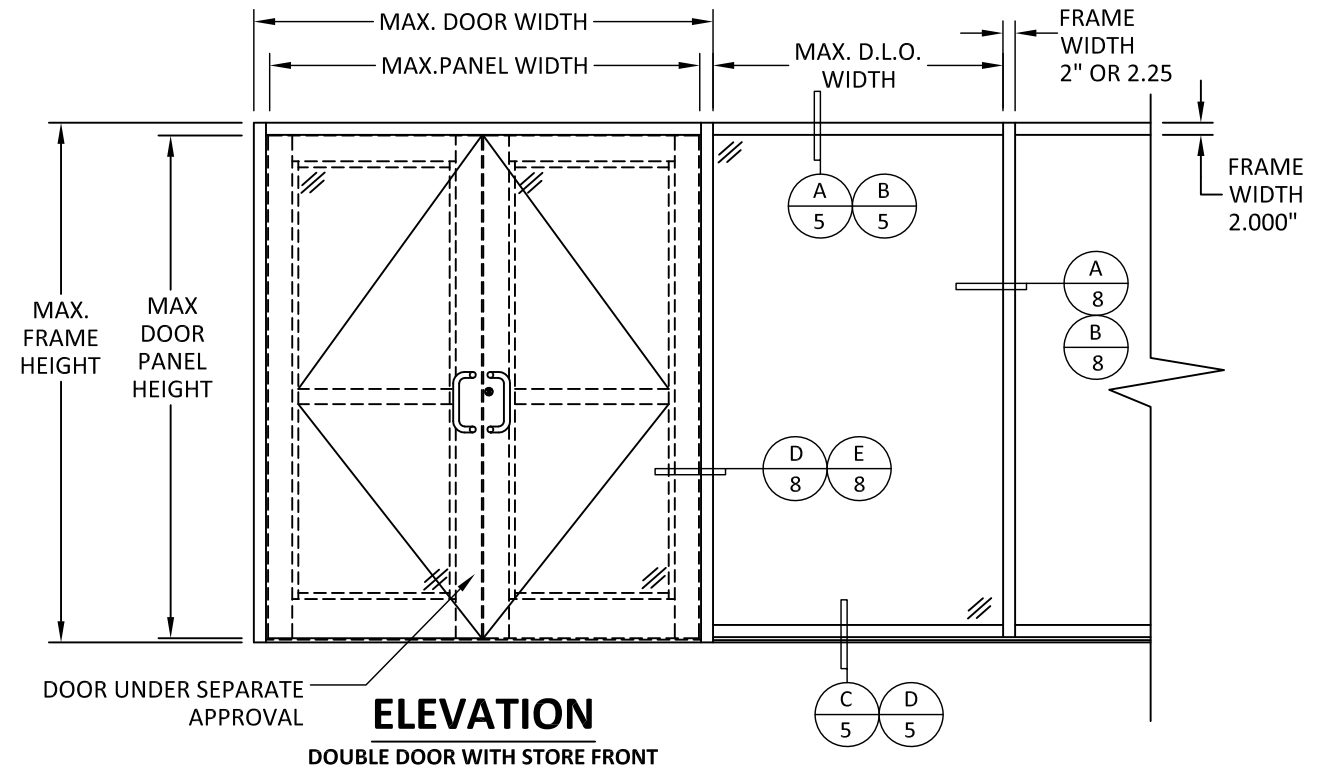
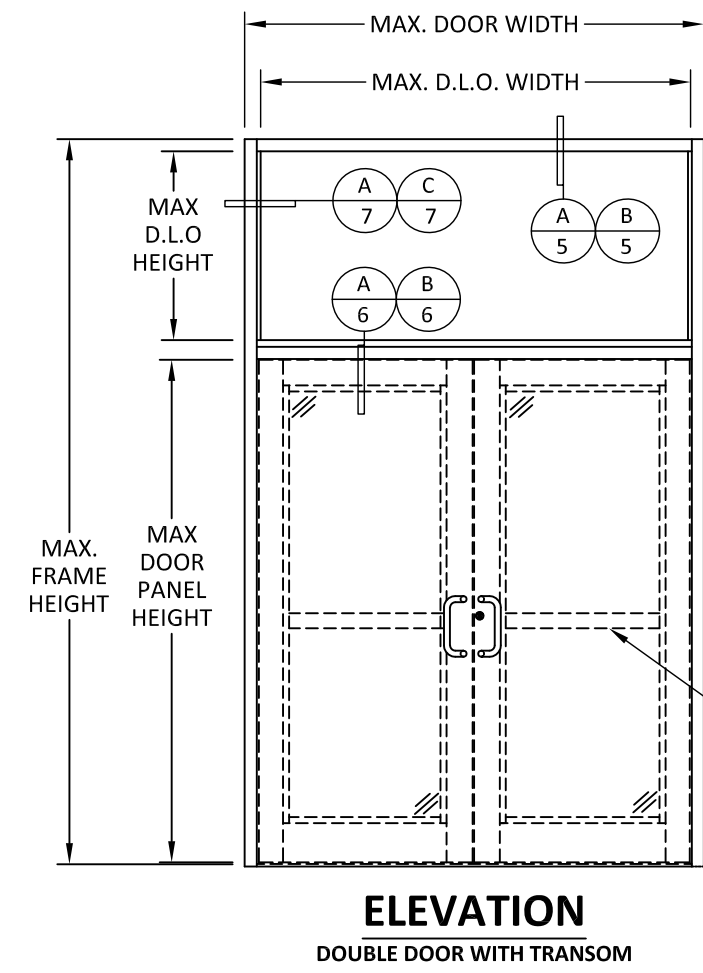
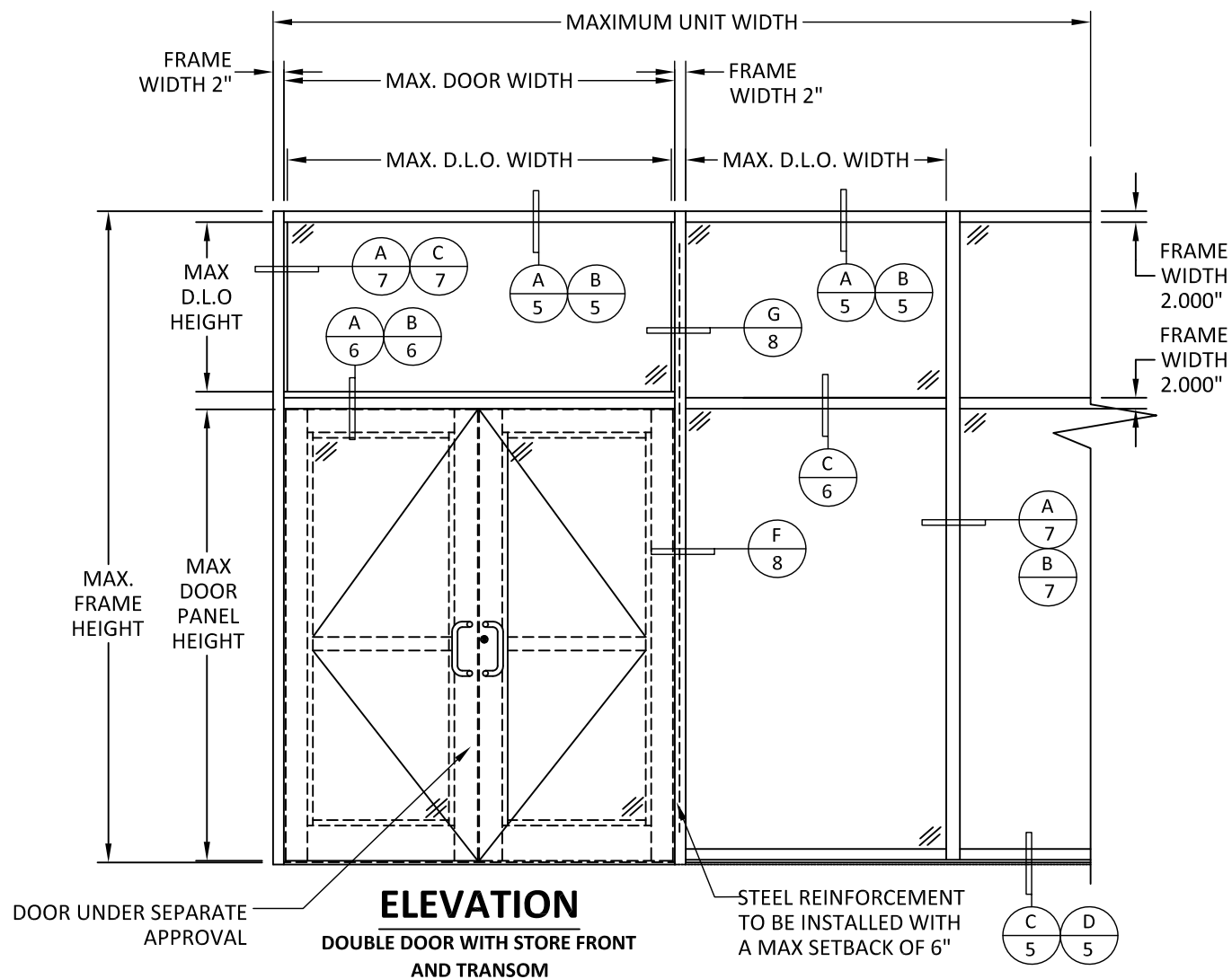
REMARKS	BY	DATE

THE INSTALLATION DETAILS DESCRIBED HEREIN ARE GENERIC AND MAY NOT REFLECT ACTUAL CONDITIONS FOR A SPECIFIC SITE. IF SITE CONDITIONS CAUSE INSTALLATION TO DEVIATE FROM THE REQUIREMENTS DETAILED HEREIN, A LICENSED ENGINEER OR ARCHITECT SHALL PREPARE SITE SPECIFIC DOCUMENTS FOR USE WITH THIS DOCUMENT



HERMES F. NORERO, P.E.  
TEXAS P.E. No. 118471  
BUILDING DROPS, INC  
398 E. DANIA BEACH BLVD. # 338  
DANIA BEACH, FL 33004  
TBPE FIRM No. 13734

DATE:	02.11.21
DWG. BY:	ER
CHK. BY:	HFN
SCALE:	NTS
DWG. #:	KAW017
SHEET:	3



3/21/2022 4:22 PM  
s:\projects\kawneer company\tdr-21-0118 -tdi-submittal\dwgs\116517\kaw017.dwg

TITLE: TRIFAB 601T STOREFRONT  
(IMPACT)

TYPICAL CONFIGURATIONS  
& ANCHOR LAYOUT

PREPARED BY:  
**BUILDING DROPS, INC.**  
398 E. DANIA BEACH BLVD., STE. 338  
DANIA BEACH, FL 33004  
PH: (954) 399-8478  
FAX: (954) 744-4738  
WEB: www.buildingdrops.com



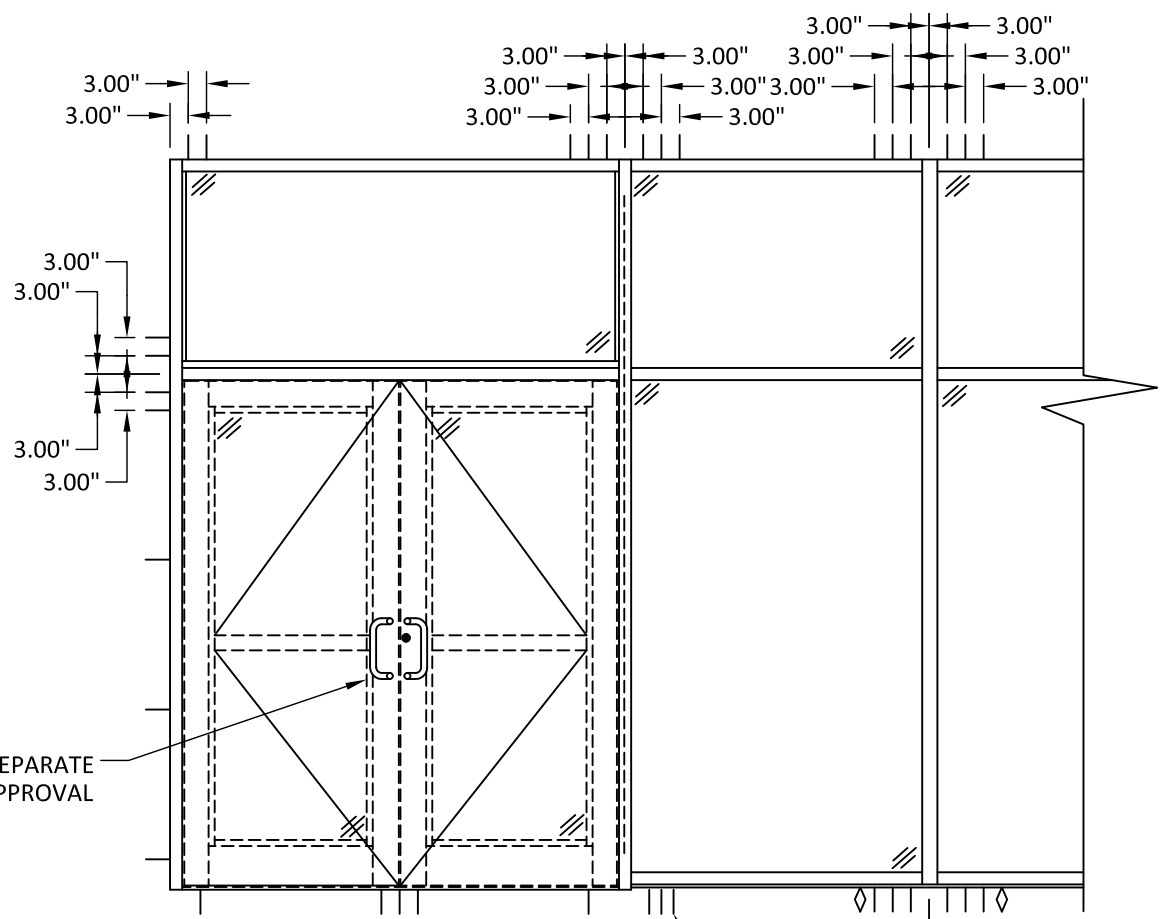
REMARKS	BY	DATE

THE INSTALLATION DETAILS DESCRIBED HEREIN ARE GENERIC AND MAY NOT REFLECT ACTUAL CONDITIONS FOR A SPECIFIC SITE. IF SITE CONDITIONS CAUSE INSTALLATION TO DEVIATE FROM THE REQUIREMENTS DETAILED HEREIN, A LICENSED ENGINEER OR ARCHITECT SHALL PREPARE SITE SPECIFIC DOCUMENTS FOR USE WITH THIS DOCUMENT



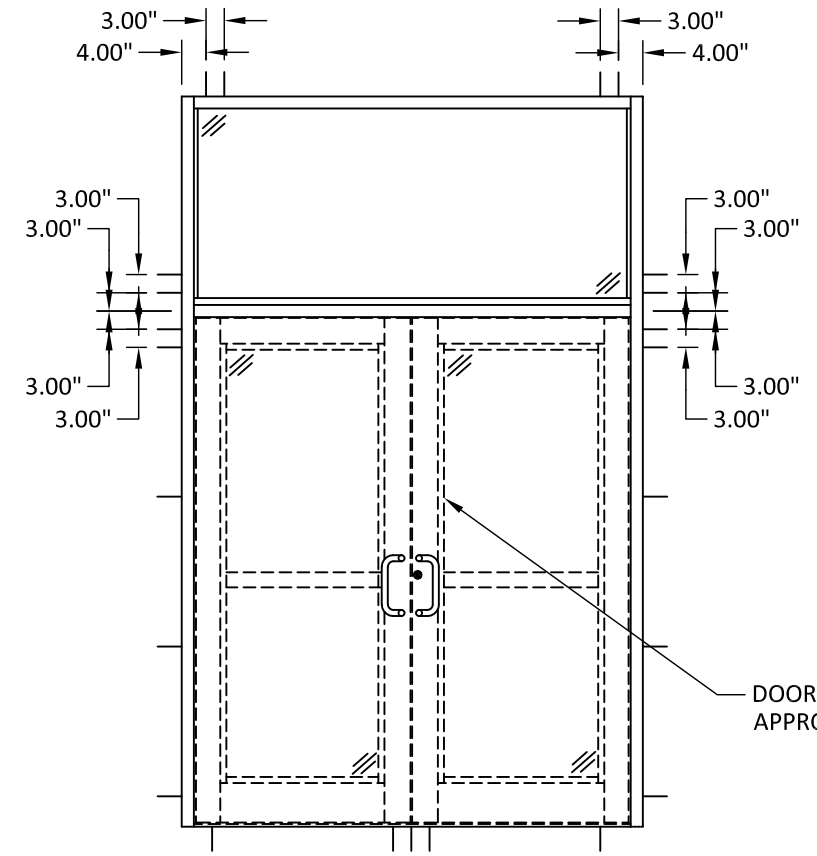
HERMES F. NORERO, P.E.  
TEXAS P.E. No. 118471  
BUILDING DROPS, INC  
398 E. DANIA BEACH BLVD. # 338  
DANIA BEACH, FL 33004  
TBPE FIRM No. 13734

DATE:	02.11.21
DWG. BY:	ER
CHK. BY:	HFN
SCALE:	NTS
DWG. #:	KAW017
SHEET:	4



**ANCHOR LAYOUT**  
DOUBLE DOOR WITH STORE FRONT  
AND TRANSOM

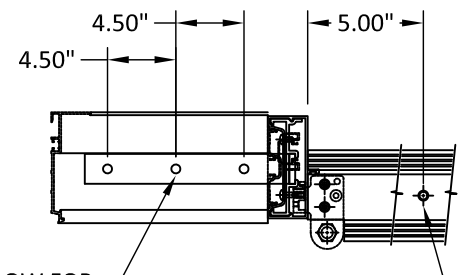
SEE DETAILS BELOW FOR  
ANCHORS MULLION AT DOOR



**ANCHOR LAYOUT**  
DOUBLE DOOR AND TRANSOM

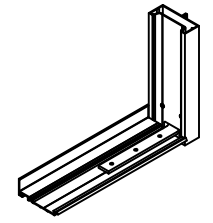
DOOR UNDER SEPARATE  
APPROVAL

DOOR UNDER SEPARATE  
APPROVAL

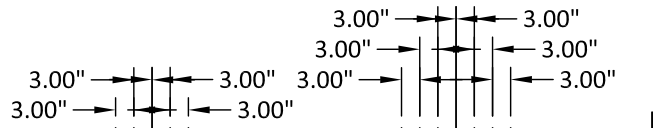


SEE TABLE BELOW FOR  
ANCHOR REQUIREMENTS  
AT DOOR MULLION

SEE ANCHOR SCHEDULE  
TABLE FOR DETAILS  
APPROVED ANCHOR



DOOR UNDER SEPARATE  
APPROVAL



**ANCHOR LAYOUT**  
DOUBLE DOOR WITH STORE FRONT

SEE DETAILS ON LEFT FOR  
ANCHORS MULLION AT DOOR

MULLION AT DOOR ANCHOR SCHEDULE				
ANCHOR DESCRIPTION	SUBSTRATE REQUIREMENTS	MIN. EMBEDMENT	MIN. SPACING	NOTES
3/8" CONCRETE SCREW	CONCRETE F'C=3000 PSI MIN.	2 1/4"	4 1/2"	SIMPSON POWER-BOLTS, ITW TRUBOLT WEDGE, HILTI KWIK-CON 3.

3/21/2022 4:22 PM s:\projects\kawneer company\tdr-21-0118 -tdi-submittal\dwgs\1161517\kaw017.dwg



TITLE: TRIFAB 601T STOREFRONT  
(IMPACT)

VERTICAL SECTIONS

PREPARED BY:  
**BUILDING DROPS, INC.**  
398 E. DANIA BEACH BLVD., STE. 338  
DANIA BEACH, FL 33004  
PH: (954) 399-8478  
FAX: (954) 744-4738  
WEB: www.buildingdrops.com



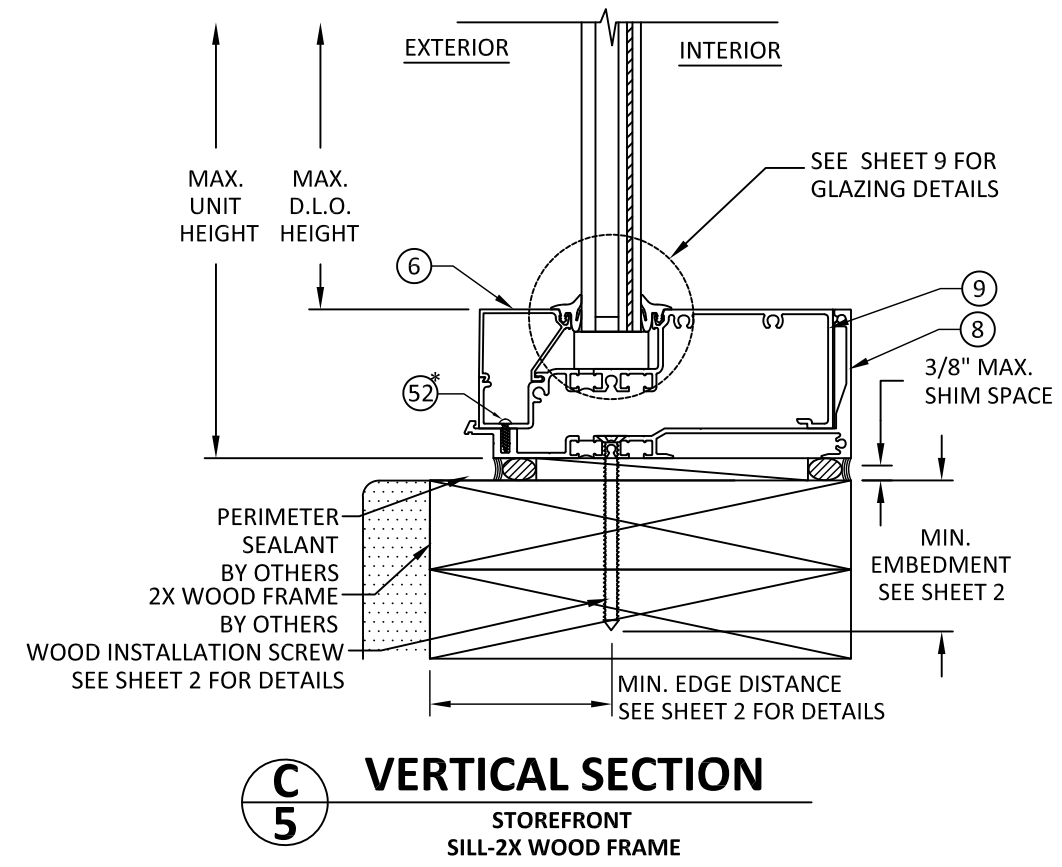
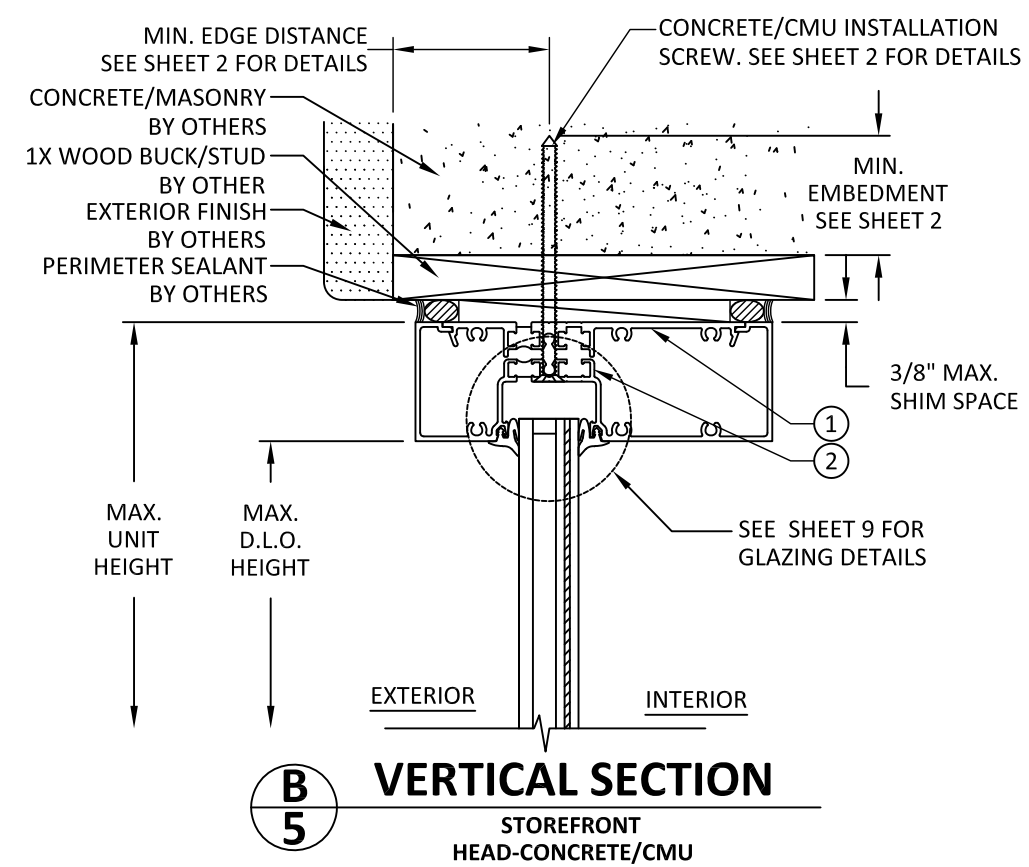
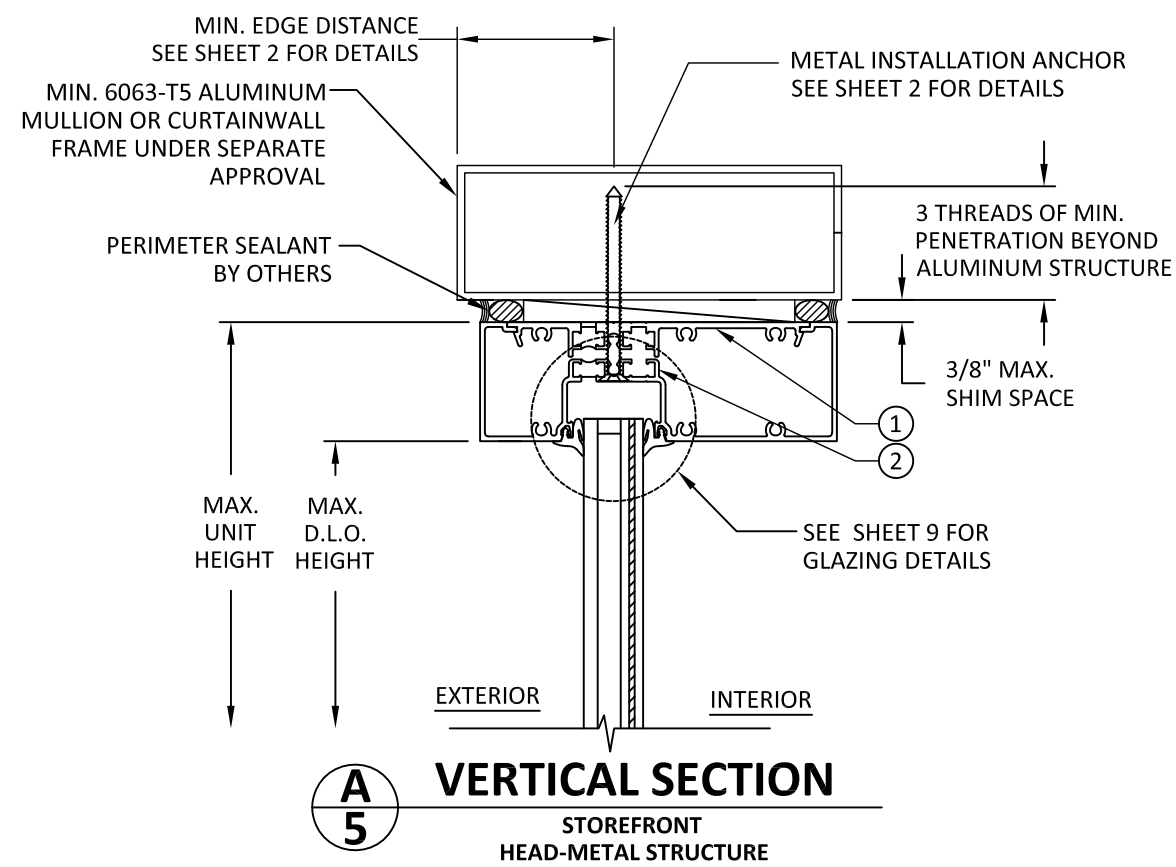
REMARKS	BY	DATE

THE INSTALLATION DETAILS DESCRIBED HEREIN ARE GENERIC AND MAY NOT REFLECT ACTUAL CONDITIONS FOR A SPECIFIC SITE. IF SITE CONDITIONS CAUSE INSTALLATION TO DEVIATE FROM THE REQUIREMENTS DETAILED HEREIN, A LICENSED ENGINEER OR ARCHITECT SHALL PREPARE SITE SPECIFIC DOCUMENTS FOR USE WITH THIS DOCUMENT

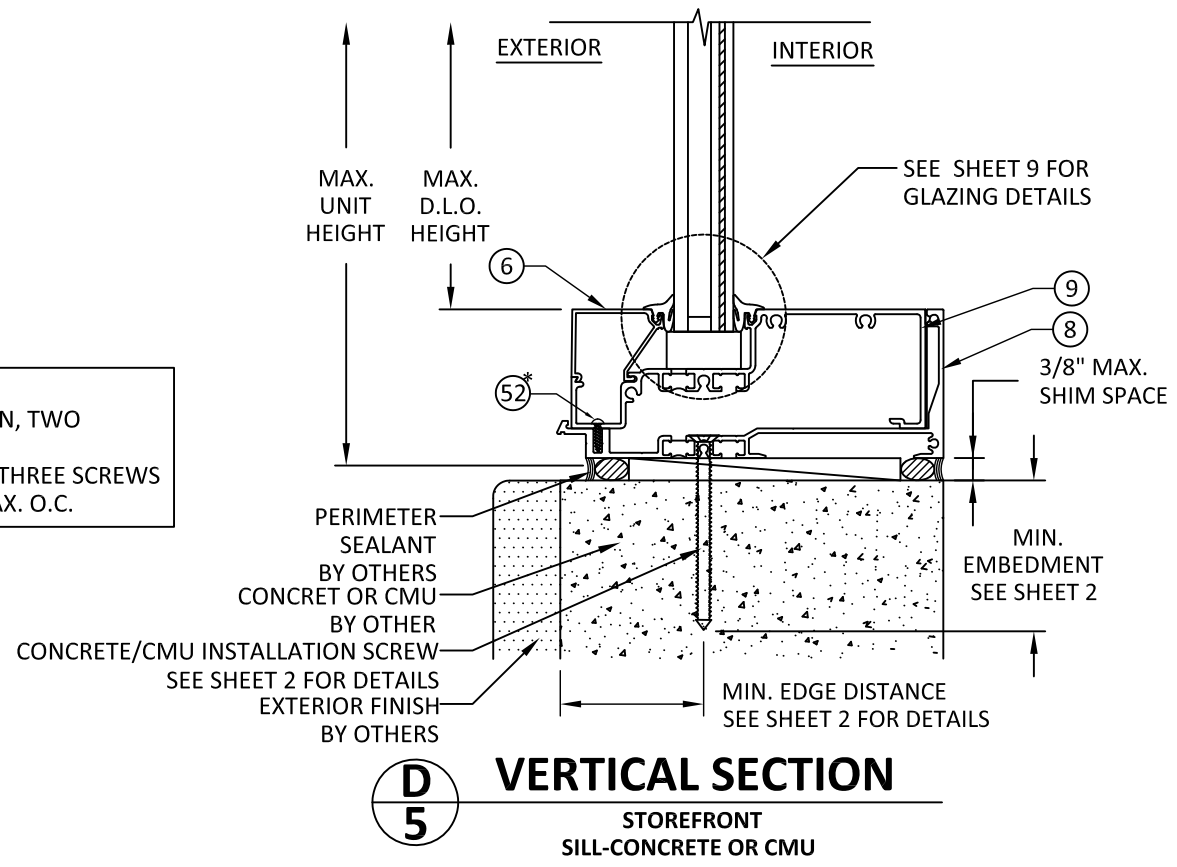


HERMES F. NORERO, P.E.  
TEXAS P.E. No. 118471  
BUILDING DROPS, INC  
398 E. DANIA BEACH BLVD. # 338  
DANIA BEACH, FL 33004  
TBPE FIRM No. 13734

DATE:	02.11.21	
DWG. BY:	ER	CHK. BY: HFN
SCALE:	NTS	
DWG. #:	KAW017	
SHEET:	5	



**\* ANCHOR #52 NOTES:**  
FOR INTERMEDIATE MULLION, TWO SCREWS.  
FOR DOOR JAMB MULLION, THREE SCREWS  
2" FROM EDGE AND 2.5" MAX. O.C.



3/21/2022 4:22 PM s:\projects\kawneer company\tdr-21-0118 -tdl-submittal\dwgs\1161517\kaw017.dwg

TITLE: TRIFAB 601T STOREFRONT  
(IMPACT)

VERTICAL SECTIONS

PREPARED BY:  
**BUILDING DROPS, INC.**  
398 E. DANIA BEACH BLVD., STE. 338  
DANIA BEACH, FL 33004  
PH: (954) 399-8478  
FAX: (954) 744-4738  
WEB: www.buildingdrops.com



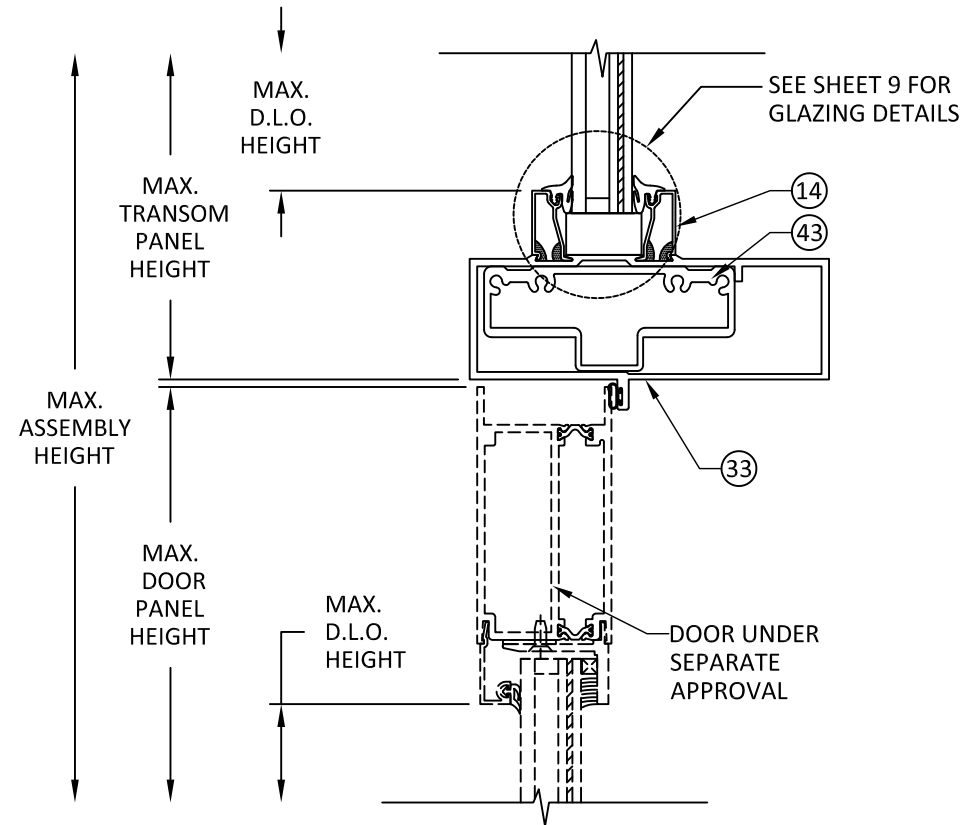
REMARKS	BY	DATE

THE INSTALLATION DETAILS DESCRIBED HEREIN ARE GENERIC AND MAY NOT REFLECT ACTUAL CONDITIONS FOR A SPECIFIC SITE. IF SITE CONDITIONS CAUSE INSTALLATION TO DEVIATE FROM THE REQUIREMENTS DETAILED HEREIN, A LICENSED ENGINEER OR ARCHITECT SHALL PREPARE SITE SPECIFIC DOCUMENTS FOR USE WITH THIS DOCUMENT

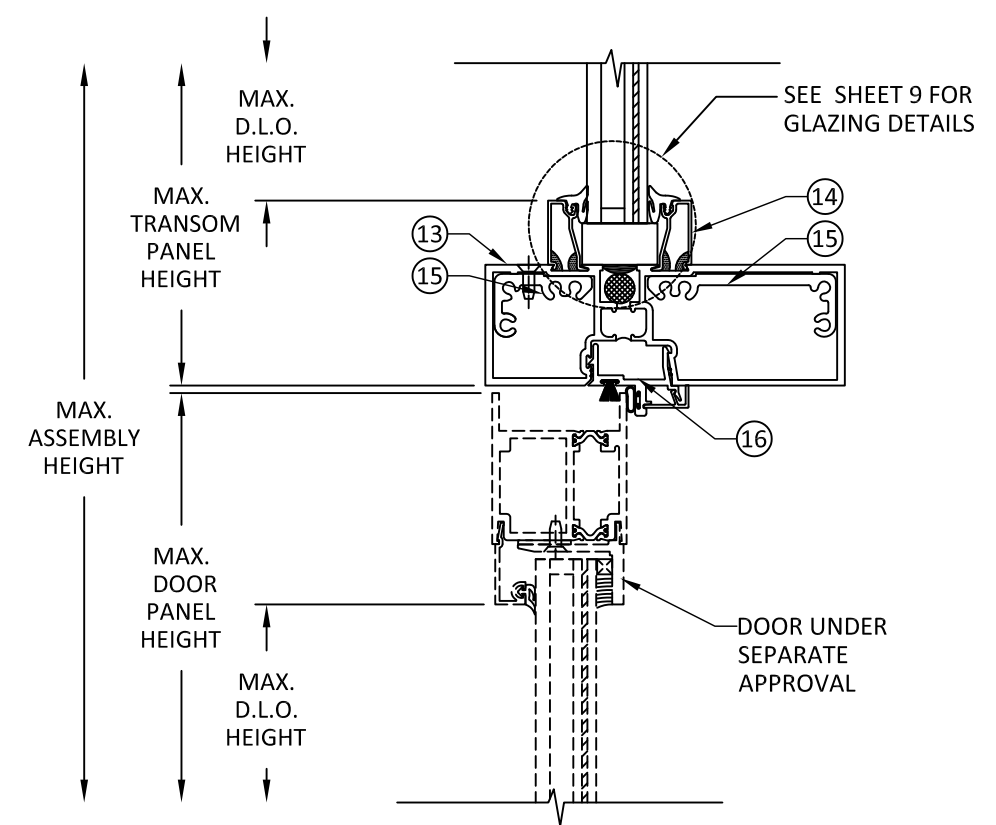


HERMES F. NORERO, P.E.  
TEXAS P.E. No 118471  
BUILDING DROPS, INC  
398 E. DANIA BEACH BLVD. # 338  
DANIA BEACH, FL 33004  
TBPE FIRM No. 13734

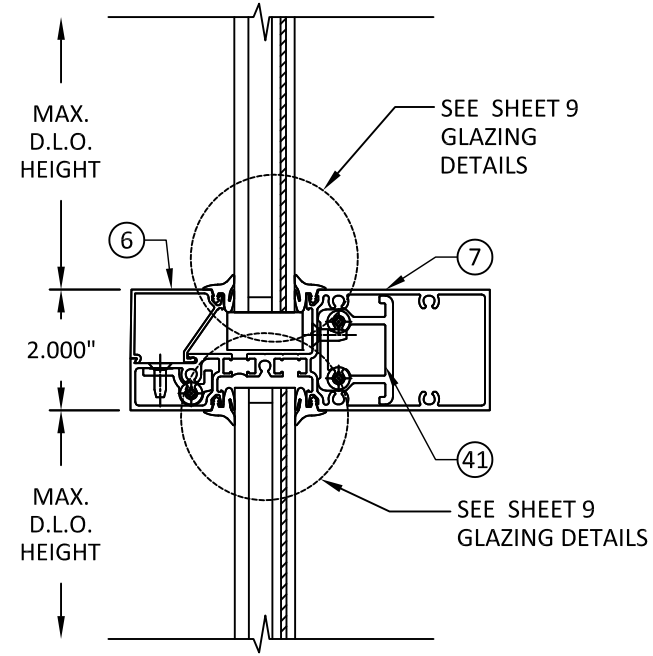
DATE:	02.11.21	
DWG. BY:	ER	CHK. BY: HFN
SCALE:	NTS	
DWG. #:	KAW017	
SHEET:	6	



**A**  
**6** VERTICAL SECTION  
AA425 DOOR WITH  
NON-THERMAL BROKEN FRAME AT TRANSOM  
MAX MULL. SPAN 72"



**B**  
**6** VERTICAL SECTION  
AA250 DOOR WITH  
THERMALLY BROKEN FRAME AT TRANSOM  
MAX MULL. SPAN 72"



**C**  
**6** VERTICAL SECTION  
HORIZONTAL MULLION  
MAX MULL. SPAN 48"

3/21/2022 4:22 PM

s:\projects\kawneer company\tdr-21-0118 -tdi\_submittal\dwgs\116517\kaw017.dwg

TITLE: TRIFAB 601T STOREFRONT  
(IMPACT)

HORIZONTAL SECTIONS

PREPARED BY:  
**BUILDING DROPS, INC.**  
398 E. DANIA BEACH BLVD., STE. 338  
DANIA BEACH, FL 33004  
PH: (954) 399-8478  
FAX: (954) 744-4738  
WEB: www.buildingdrops.com



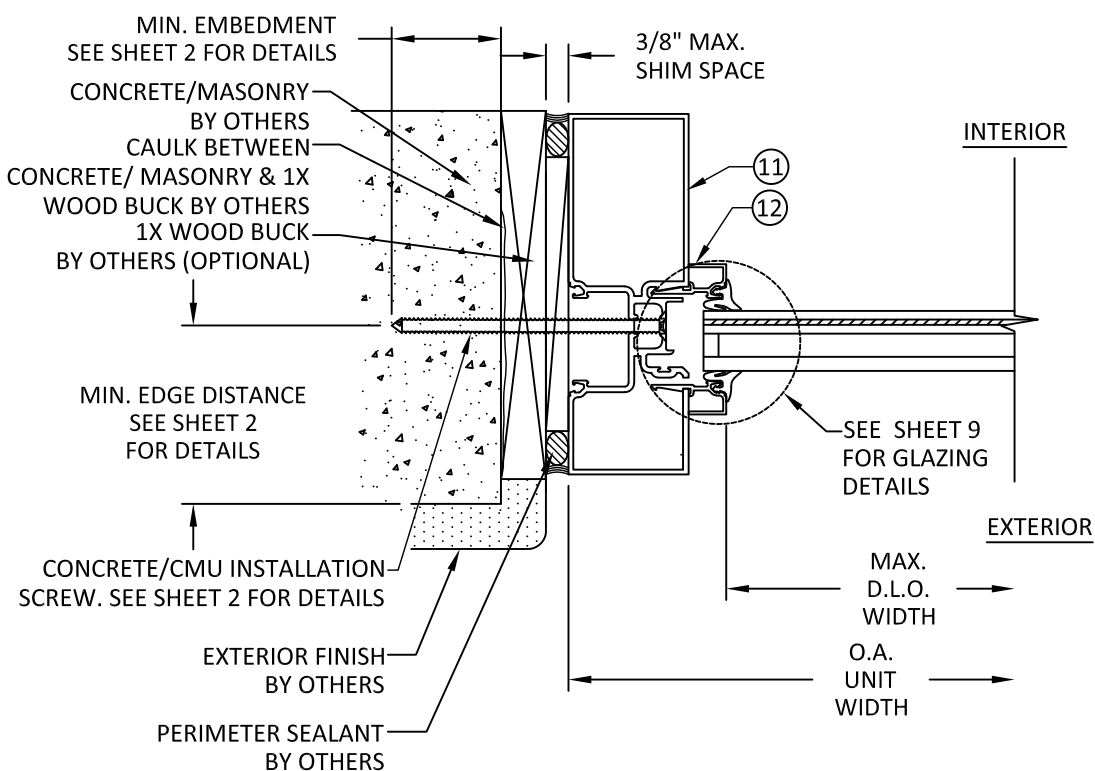
REMARKS	BY	DATE

THE INSTALLATION DETAILS DESCRIBED HEREIN ARE GENERIC AND MAY NOT REFLECT ACTUAL CONDITIONS FOR A SPECIFIC SITE. IF SITE CONDITIONS CAUSE INSTALLATION TO DEVIATE FROM THE REQUIREMENTS DETAILED HEREIN, A LICENSED ENGINEER OR ARCHITECT SHALL PREPARE SITE SPECIFIC DOCUMENTS FOR USE WITH THIS DOCUMENT

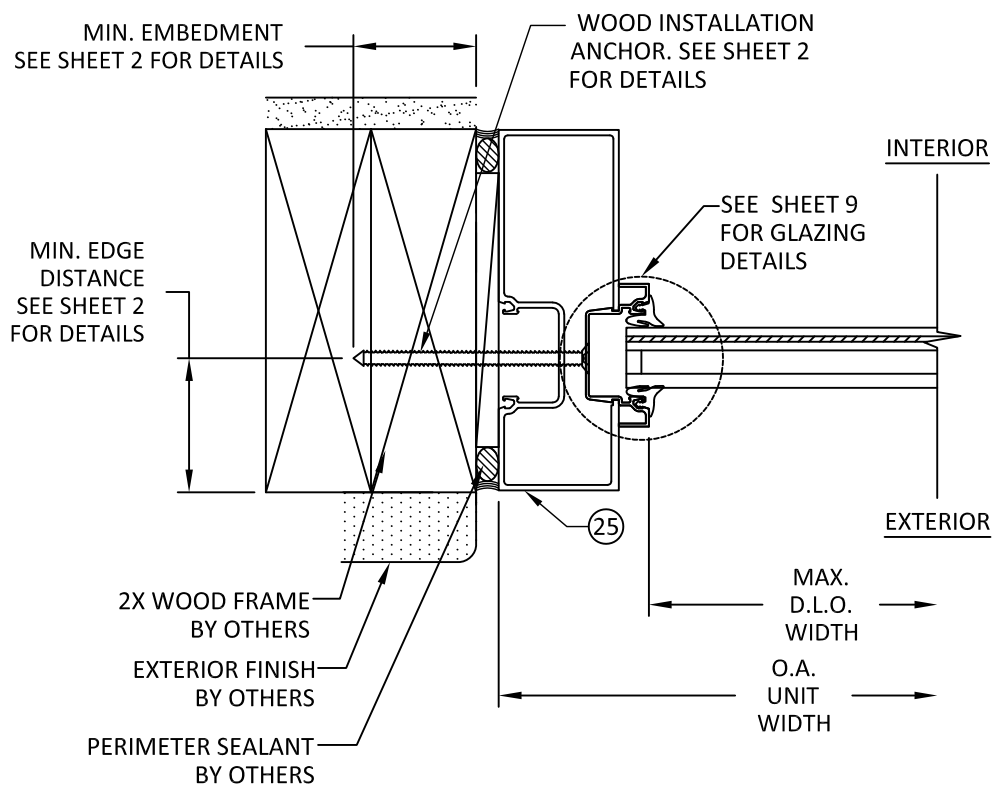


HERMES F. NORERO, P.E.  
TEXAS P.E. No. 118471  
BUILDING DROPS, INC  
398 E. DANIA BEACH BLVD. # 338  
DANIA BEACH, FL 33004  
TBPE FIRM No. 13734

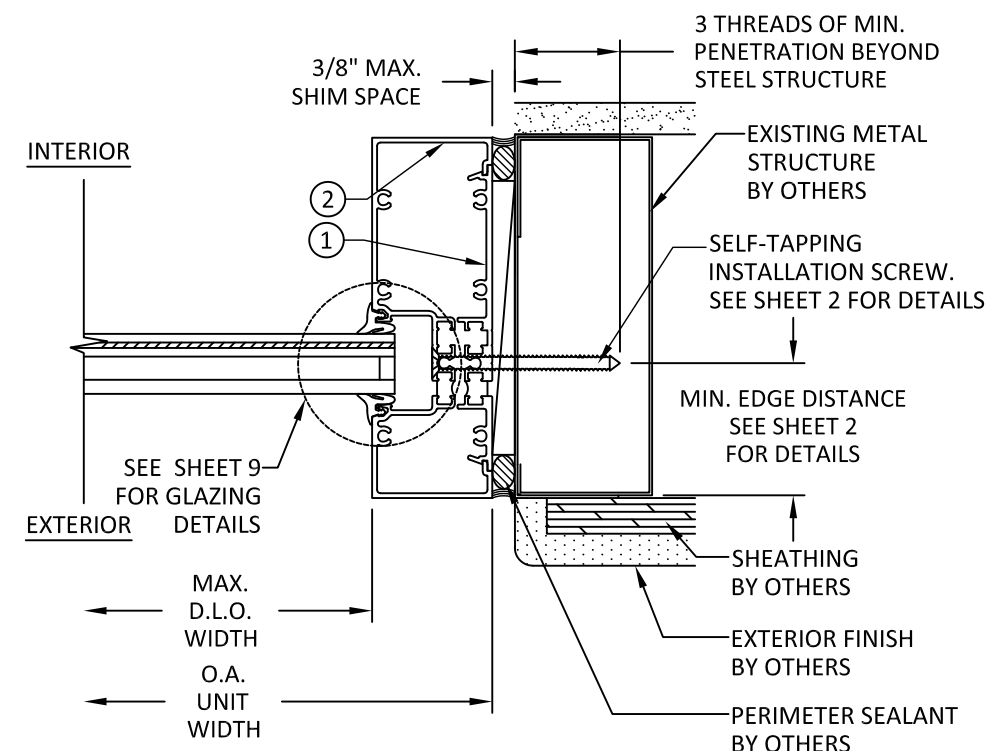
DATE:	02.11.21	
DWG. BY:	ER	CHK. BY: HFN
SCALE:	NTS	
DWG. #:	KAW017	
SHEET:	7	



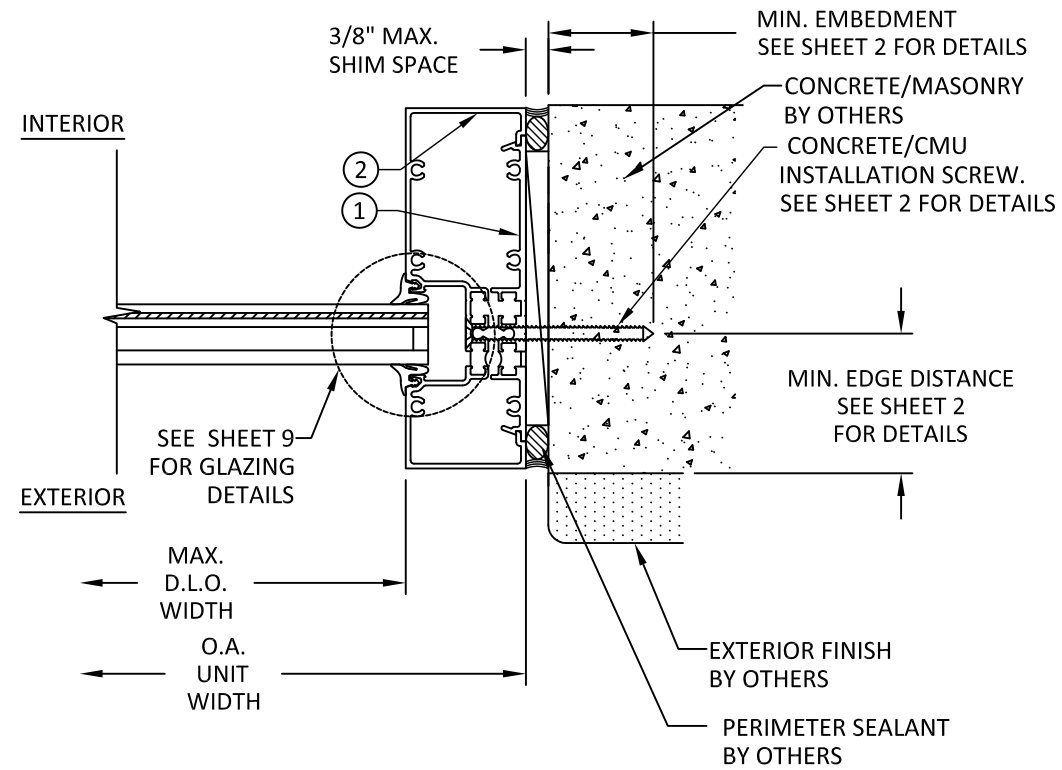
**A** HORIZONTAL SECTION  
**7** TRANSOM FRAME (THERMALLY BROKEN)  
JAMB-CONCRETE/MASONRY



**C** HORIZONTAL SECTION  
**7** TRANSOM FRAME (NON-THERMALLY BROKEN)  
JAMB - 2X WOOD FRAME



**B** HORIZONTAL SECTION  
**7** STOREFRONT  
JAMB-CONCRETE/MASONRY



**D** HORIZONTAL SECTION  
**7** STOREFRONT  
JAMB-CONCRETE/MASONRY

3/21/2023 4:22 PM

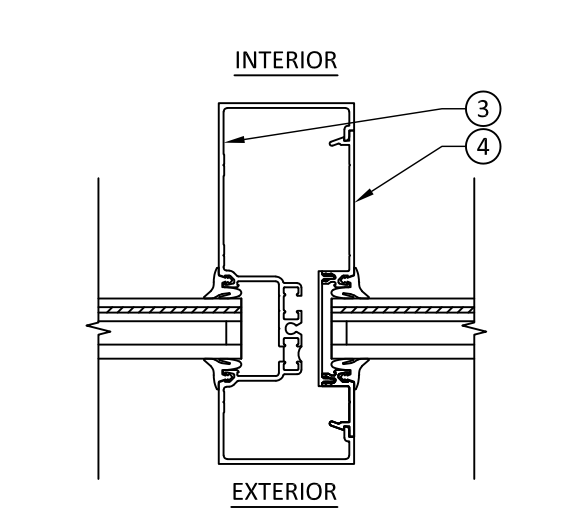
s:\projects\kawneer company\tdr-21-0118 -tdf-submittal\dwgs\1161517\kaw017.dwg



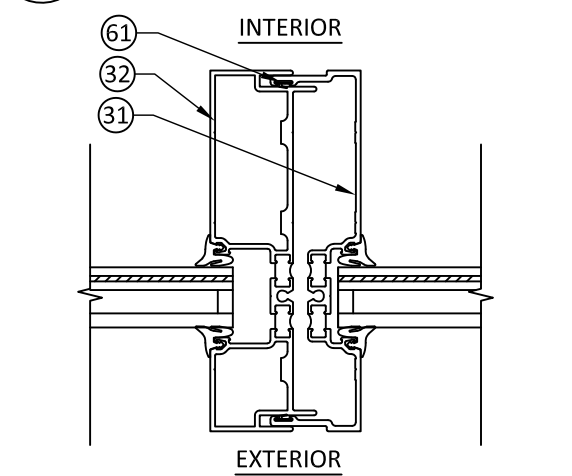
3/21/2022 4:22 PM

s:\projects\kawneer company\tdr-21-0118 -tdf-submittal\dwgs\1161517\kaw017.dwg

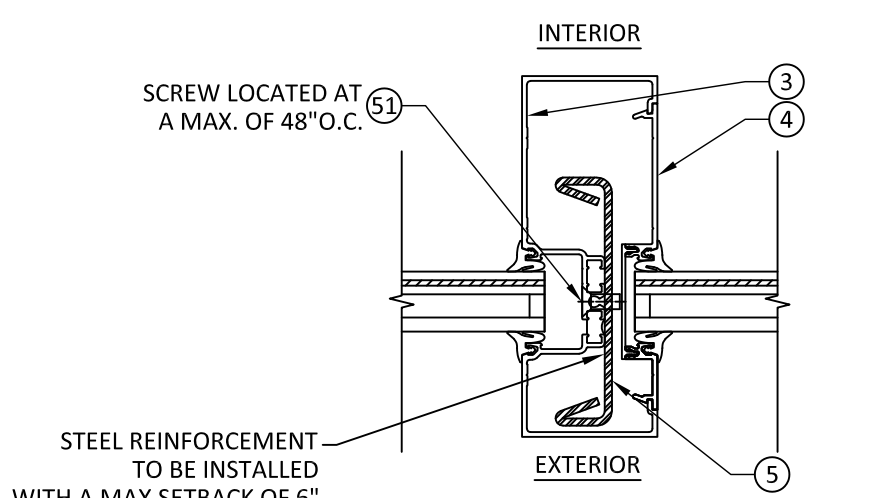
MULLION LOAD CAPACITY - ALLOWABLE DESIGN PRESSURE (PSF)				
NOMINAL DIMS.		MULLION 1	MULLION 2	MULLION 3
TRIBUTARY WIDTH (IN)	FRAME HEIGHT (IN)	EXT. (+) INT. (-)	EXT. (+) INT. (-)	EXT. (+) INT. (-)
50	120	--	45.0	45.0
44		--	45.0	45.0
36		45.0	45.0	45.0
50	108	--	45.0	45.0
44		--	45.0	45.0
36		45.0	45.0	45.0
60	96	--	45.0	45.0
56		--	45.0	45.0
50		45.0	45.0	45.0
44	84	45.0	45.0	45.0
36		45.0	45.0	45.0
68		--	45.0	45.0
60	72	--	45.0	45.0
56		45.0	45.0	45.0
50		45.0	45.0	45.0
44	60	45.0	45.0	45.0
36		45.0	45.0	45.0
74		--	45.0	45.0
68	60	45.0	45.0	45.0
60		45.0	45.0	45.0
56		45.0	45.0	45.0
50	60	45.0	45.0	45.0
44		45.0	45.0	45.0
36		45.0	45.0	45.0



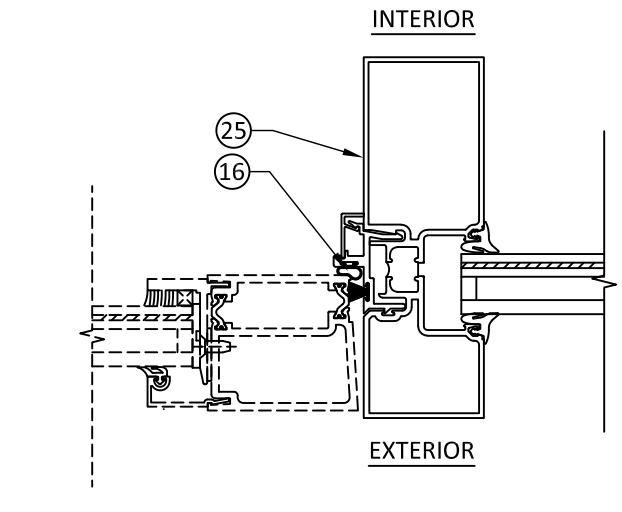
**A** HORIZONTAL SECTION  
8 MULLION OPTION 1



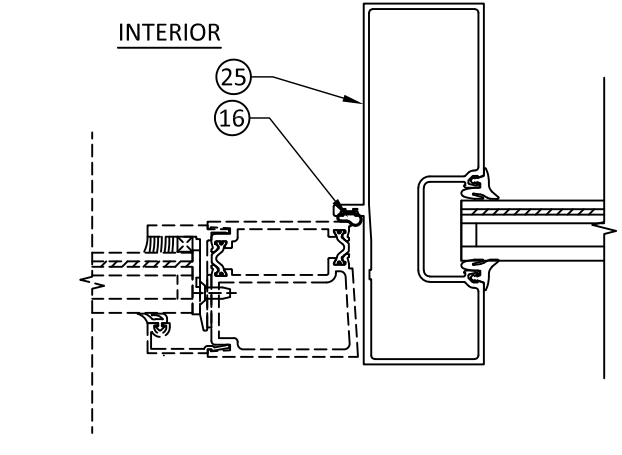
**B** HORIZONTAL SECTION  
8 MULLION 2



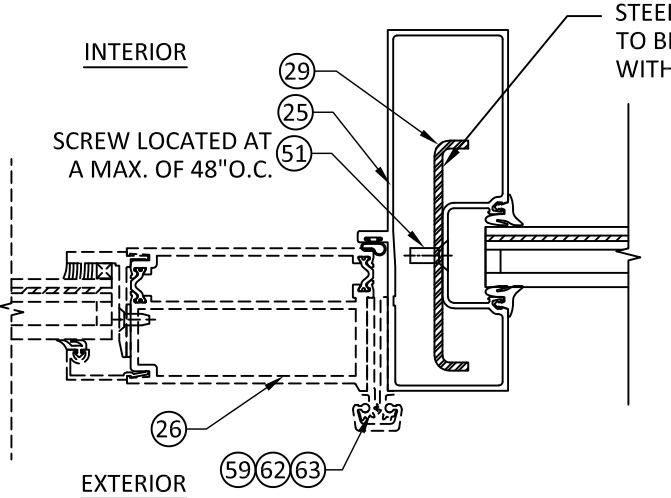
**C** HORIZONTAL SECTION  
8 MULLION 3



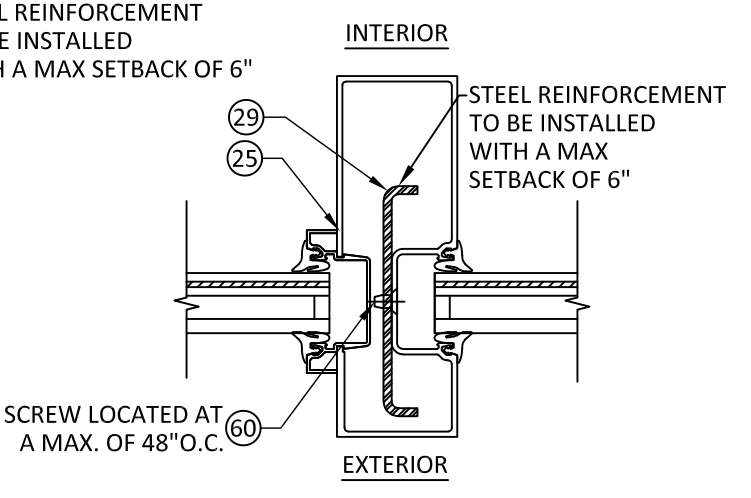
**D** HORIZONTAL SECTION  
8 MULLION 5 (THERMALLY BROKEN JAMB)  
TYPICAL FOR AA425 & AA250



**E** HORIZONTAL SECTION  
8 MULLION 5 (NON-THERMALLY BROKEN JAMB)  
TYPICAL FOR AA425 & AA250



**F** HORIZONTAL SECTION  
8 MULLION 6 (DOOR JAMBS)  
TYPICAL FOR AA425 & AA250



**G** HORIZONTAL SECTION  
8 MULLION 6 (DOOR JAMBS)  
REINFORCE TRANSOM

MULLION LOAD CAPACITY - ALLOWABLE DESIGN PRESSURE (PSF)			
NOMINAL DIMS.		MULLION 5	MULLION 6
TRIBUTARY WIDTH (IN)	FRAME HEIGHT (IN)	EXT. (+) INT. (-)	EXT. (+) INT. (-)
60	120	--	45.0
56		--	45.0
50		45.0	45.0
44	108	45.0	45.0
36		45.0	45.0
60		--	45.0
56	96	--	45.0
50		45.0	45.0
44		45.0	45.0
36	84	45.0	45.0
74		--	45.0
68		--	45.0
60	72	45.0	45.0
56		45.0	45.0
50		45.0	45.0
44	60	45.0	45.0
36		45.0	45.0
74		--	45.0
68	60	45.0	45.0
60		45.0	45.0
56		45.0	45.0
50	60	45.0	45.0
44		45.0	45.0
36		45.0	45.0



555 GUTHRIDGE CT  
NORCROSS, GA 30092  
PH: (770) 840-6431

TITLE: TRIFAB 601T STOREFRONT  
(IMPACT)

MULLION DESIGN  
PRESSURE TABLES

PREPARED BY:  
**BUILDING DROPS, INC.**  
398 E. DANIA BEACH BLVD., STE. 338  
DANIA BEACH, FL 33004  
PH: (954) 399-8478  
FAX: (954) 744-4738  
WEB: www.buildingdrops.com



REMARKS	BY	DATE

THE INSTALLATION DETAILS DESCRIBED HEREIN ARE GENERIC AND MAY NOT REFLECT ACTUAL CONDITIONS FOR A SPECIFIC SITE. IF SITE CONDITIONS CAUSE INSTALLATION TO DEVIATE FROM THE REQUIREMENTS DETAILED HEREIN, A LICENSED ENGINEER OR ARCHITECT SHALL PREPARE SITE SPECIFIC DOCUMENTS FOR USE WITH THIS DOCUMENT



HERMES F. NORERO, P.E.  
TEXAS P.E. No. 118471  
BUILDING DROPS, INC  
398 E. DANIA BEACH BLVD. # 338  
DANIA BEACH, FL 33004  
TBPE FIRM No. 13734

DATE:	02.11.21	
DWG. BY:	ER	CHK. BY: HFN
SCALE:	NTS	
DWG. #:	KAW017	
SHEET:	8	



TITLE: TRIFAB 601T STOREFRONT  
(IMPACT)

GLAZING DETAILS

PREPARED BY:  
**BUILDING DROPS, INC.**  
398 E. DANIA BEACH BLVD., STE. 338  
DANIA BEACH, FL 33004  
PH: (954) 399-8478  
FAX: (954) 744-4738  
WEB: www.buildingdrops.com



REMARKS	BY	DATE

THE INSTALLATION DETAILS DESCRIBED HEREIN ARE GENERIC AND MAY NOT REFLECT ACTUAL CONDITIONS FOR A SPECIFIC SITE. IF SITE CONDITIONS CAUSE INSTALLATION TO DEVIATE FROM THE REQUIREMENTS DETAILED HEREIN, A LICENSED ENGINEER OR ARCHITECT SHALL PREPARE SITE SPECIFIC DOCUMENTS FOR USE WITH THIS DOCUMENT



HERMES F. NORERO, P.E.  
TEXAS P.E. No 118471  
BUILDING DROPS, INC  
398 E. DANIA BEACH BLVD. # 338  
DANIA BEACH, FL 33004  
TBPE FIRM No. 13734

DATE: **02.11.21**

DWG. BY: **ER**      CHK. BY: **HFN**

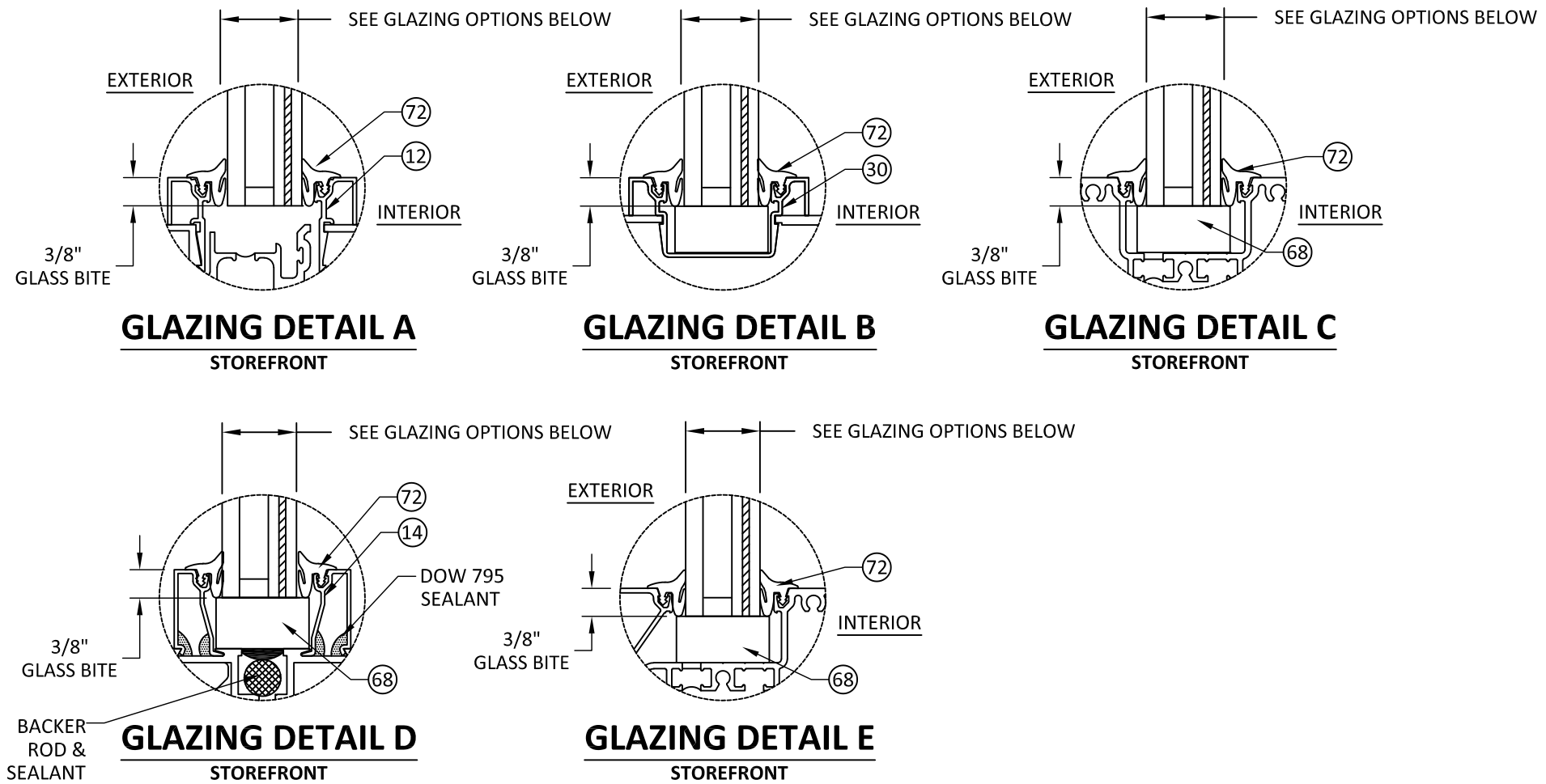
SCALE: **NTS**

DWG. #: **KAW017**

SHEET: **9**

OF 10

GLASS LOAD CAPACITY (PSF)		
NOMINAL DIMS.		GLASS OPTION 1 & 2
D.L.O. WIDTH 'a' (in.)	D.L.O. HEIGHT 'b' (in.)	EXT. (+) INT. (-)
30	117.125	45.0
24		45.0
36	105.125	45.0
30		45.0
24		45.0
36	93.125	45.0
30		45.0
24		45.0
48	81.125	45.0
42		45.0
36		45.0
30		45.0
24	69.125	45.0
54		40.0
48		45.0
42		45.0
36		45.0
30		45.0
24	45.0	

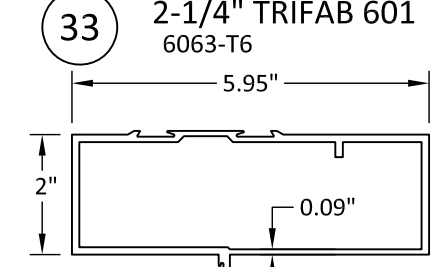
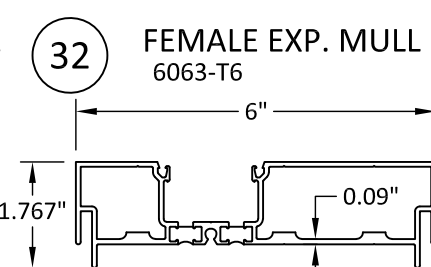
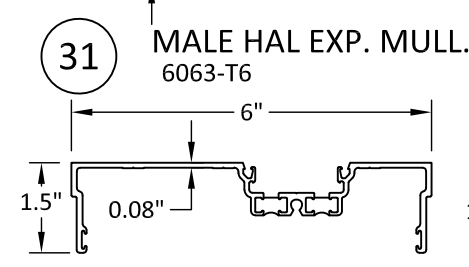
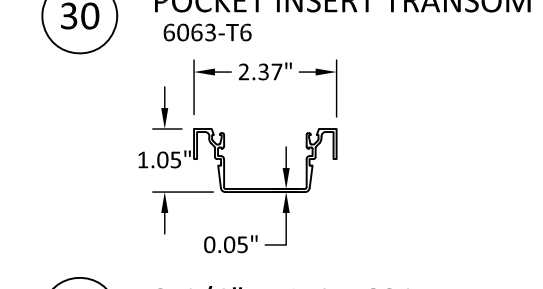
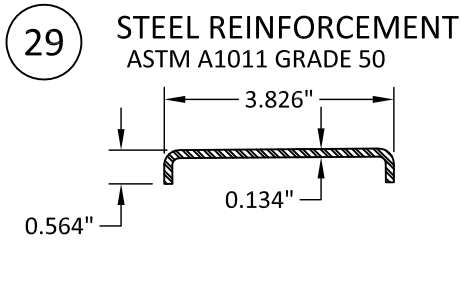
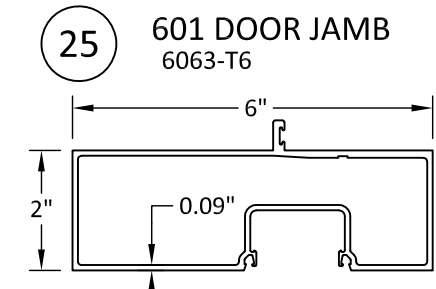
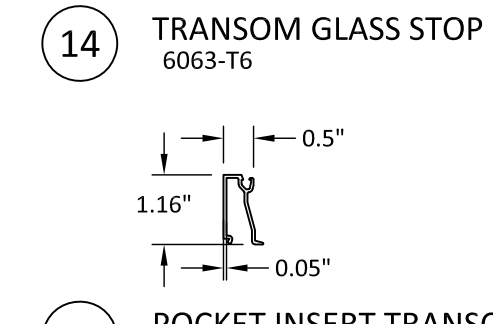
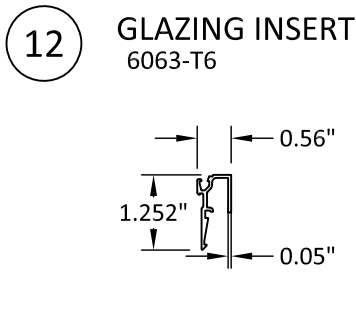
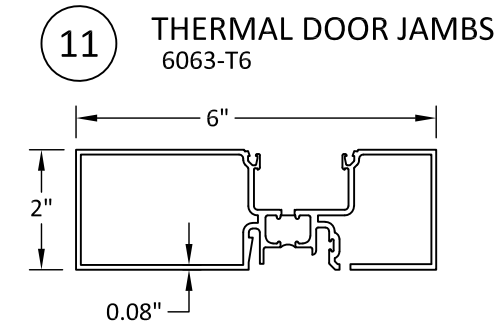
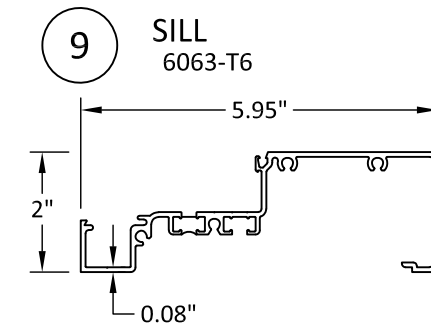
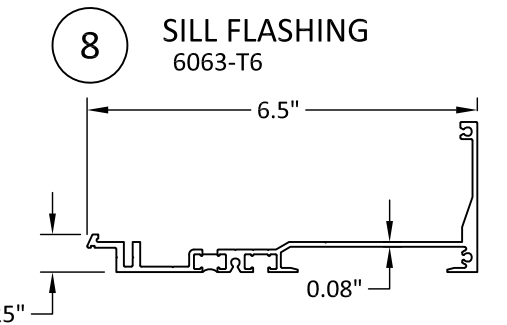
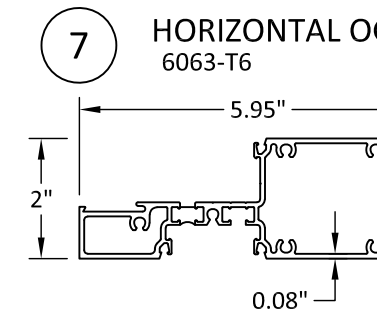
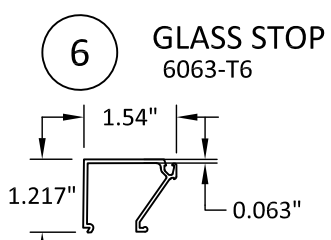
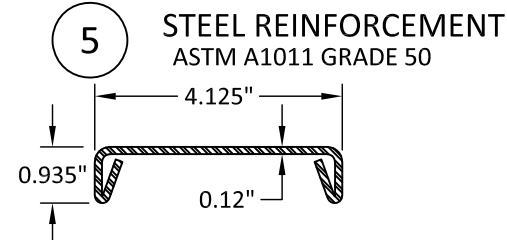
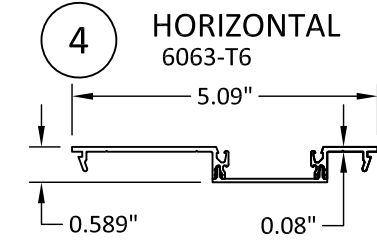
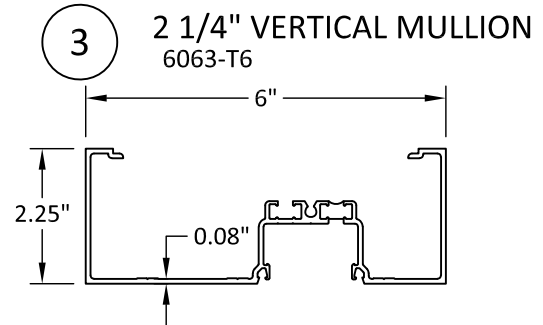
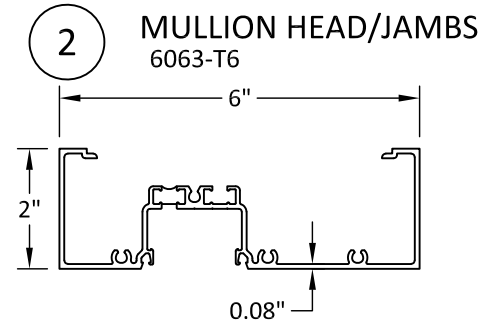
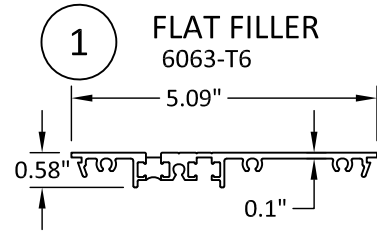


- GLAZING OPTIONS :**
- |                                                                                                                                                                            |                                                                                                                                                                       |
|----------------------------------------------------------------------------------------------------------------------------------------------------------------------------|-----------------------------------------------------------------------------------------------------------------------------------------------------------------------|
| 1. 1" IG LAMINATED GLASS CONSISTING OF:<br>1/4" TEMPERED GLASS<br>3/8" AIR SPACE<br>3/16" HEAT STRENGTHENED<br>0.090" SGP INTERLAYER BY KURARAY<br>3/16" HEAT STRENGTHENED | 2. 1" IG LAMINATED GLASS CONSISTING OF:<br>1/4" TEMPERED GLASS<br>3/8" AIR SPACE<br>3/16" HEAT STRENGTHENED<br>0.090" SAFLEX CP BY EASTMAN<br>3/16" HEAT STRENGTHENED |
|----------------------------------------------------------------------------------------------------------------------------------------------------------------------------|-----------------------------------------------------------------------------------------------------------------------------------------------------------------------|

- GLAZING NOTES:**
- GLASS TYPE AND THICKNESS COMPLY WITH ASTM E1300 REQUIREMENTS AS WELL AS APPLICABLE SAFETY GLAZING REQUIREMENTS PER THE 2018 IBC, IRC. THICKNESS, TEMPER, AND SAFETY GLAZING REQUIREMENTS SHALL BE REVIEWED ON A SITE SPECIFIC BASIS.
  - D.L.O. MAY NOT EXCEED MAX DIMENSIONS SHOWN ON ELEVATIONS.

**BILL OF MATERIAL**

ID NO.	PART NO.	DESCRIPTION	MATERIAL
1	601TCG216	FLAT FILLER	6063-T6 ALUMINUM
2	601TCG001	MULLION HEAD/JAMB	6063-T6 ALUMINUM
3	601TCG112	2-1/4" VERTICAL MULLION	6063-T6 ALUMINUM
4	601TCG002	POCKET FILLER	6063-T6 ALUMINUM
5	450110	STEEL REINFORCEMENT	ASTM A1011 GRADE 50
6	451CG004	GLASS STOP	6063-T6 ALUMINUM
7	601TCG021	HORIZONTAL OG	6063-T6 ALUMINUM
8	601TCG037	SILL FLASHING	6063-T6 ALUMINUM
9	601TCG014	SILL	6063-T6 ALUMINUM
10	601CG315	END DAM	1010-1020 H.R. STEEL
11	601136	THERMAL DOOR JAMB	6063-T6 ALUMINUM
12	452041	GLAZING INSERT	6063-T6 ALUMINUM
14	450022	TRANSOM BAR GLASS STOP	6063-T6 ALUMINUM
15	601CG527	T-BAR/HEADER CLIP PKG	VARIES
16	452138	THERMAL DOOR STOP ASS'Y	
25	601021	601 DOOR JAMB	6063-T6 ALUMINUM
29	575301	STEEL REINFORCEMENT	ASTM A1011 GRADE 50
30	451026	POCKET INSERT TRANSOM	6063-T6 ALUMINUM
31	601UTCG009	MALE HAL EXP. MULLION	6063-T6 ALUMINUM
32	601UTCG010	FEMALE HALP EXP. MULLION	6063-T6 ALUMINUM
33	601022	S/A T-BAT 2-1/4" TRIFAB 601	6063-T6 ALUMINUM
40	601CG528	SHEAR BLOCK	6063-T6 ALUMINUM
41	601CG526	SHEAR CBOL	VARIES
42	601CG524	SHEAR CBOL	VARIES
43	451548	WATER DEFLECTOR	VARIES
50	451T-CG-104	MULLION SCREW #12 X 1-1/8" PHTF	300 S.S.
51	128207	STEEL TO MULLION SCREW 1/4"-20 X 5/8" FHMS	300 S.S.
52	128369	SILL TO FLASHING SCREW 1/4"-20 X 7/16" PHTCMS	300 S.S.
53	028808	END DAM SCREW #12 X 1/2" PHTF	300 S.S.
57	027278	WEATHERING	PILE/POLYPROPYLENE
58	027215	WEATHERING	PILE/POLYPROPYLENE
59	050820	CONTINUOUS HINGE	6063 T6 ALUMINUM
60	028845	STEEL TO MULLION SCREW #12-20 X 3/8" FHMS	300 S.S.
61	027806	EXP. MULLION GASKET	TPV/POLYPROPYLENE
64	027563	WEATHERING	EPDM
65	575047	EXTERIOR GLASS STOP FOR DOOR	----
66	027394	SETTING BLOCK FOR DOOR	----
67	127171	3M VHB 7/8" SG TAPE G23F	----
68	----	STRUCTURAL SILICONE	----
69	575030	1" INTERIOR INFILL GLASS STOP	6063 T6 ALUMINUM
70	127095	FOAM SPACER	----
71	128910	FASTENER INTERIOR DOOR GLASS STOP	6063 T6 ALUMINUM
72	027074	STD. PUSH ON GASKET	DUROMETER EPDM
73	027073	SETTING BLOCK	----
75	027080	SETTING BLOCK	----



555 GUTHRIDGE CT  
NORCROSS, GA 30092  
PH: (770) 840-6431

TITLE: TRIFAB 601T STOREFRONT  
(IMPACT)

BILL OF MATERIALS & COMPONENTS

PREPARED BY:  
**BUILDING DROPS, INC.**  
398 E. DANIA BEACH BLVD., STE. 338  
DANIA BEACH, FL 33004  
PH: (954) 399-8478  
FAX: (954) 744-4738  
WEB: www.buildingdrops.com



REMARKS	BY	DATE

THE INSTALLATION DETAILS DESCRIBED HEREIN ARE GENERIC AND MAY NOT REFLECT ACTUAL CONDITIONS FOR A SPECIFIC SITE. IF SITE CONDITIONS CAUSE INSTALLATION TO DEVIATE FROM THE REQUIREMENTS DETAILED HEREIN, A LICENSED ENGINEER OR ARCHITECT SHALL PREPARE SITE SPECIFIC DOCUMENTS FOR USE WITH THIS DOCUMENT



HERMES F. NORERO, P.E.  
TEXAS P.E. No. 118471  
BUILDING DROPS, INC  
398 E. DANIA BEACH BLVD. # 338  
DANIA BEACH, FL 33004  
TBPE FIRM No. 13734

DATE:	02.11.21	
DWG. BY:	ER	CHK. BY: HFN
SCALE:	NTS	
DWG. #:	KAW017	
SHEET:	10	

3/21/2022 4:22 PM s:\projects\kawneer company\tdr-21-0118 -tdl\_submittal\dwgs\1161517\kaw017.dwg