

REVISIONS			
REV	DESCRIPTION	DATE	APPROVED
A	REMOVED 32\" CURB	04/15/11	R.L.

- NOTES:
- 1) THE PRODUCT SHOWN HEREIN IS DESIGNED AND MANUFACTURED TO COMPLY WITH REQUIREMENTS OF THE 2006 INTERNATIONAL BUILDING CODE AND 2006 INTERNATIONAL RESIDENTIAL CODE WITH TEXAS STATE MODIFICATIONS.
 - 2) WOOD FRAMING AND MASONRY OPENING TO BE DESIGNED AND ANCHORED TO PROPERLY TRANSFER ALL LOADS TO STRUCTURE. FRAMING AND MASONRY OPENING IS THE RESPONSIBILITY OF THE ARCHITECT OR ENGINEER OF RECORD.
 - 3) RESPONSIBILITY OF SELECTING FENESTRATION PRODUCTS TO MEET ANY APPLICABLE LOCAL LAWS, BUILDING CODES, ORDINANCES OR OTHER SAFETY REQUIREMENTS REST SOLELY WITH THE ARCHITECT, ENGINEER OF RECORD, BUILDING OWNER OR CONTRACTOR.
 - 4) APPROVED IMPACT PROTECTIVE SYSTEM IS NOT REQUIRED FOR THIS PRODUCT IN WIND BORNE DEBRIS REGIONS.
 - 5) UNITS MUST BE GLAZED WITH 1\" IGU CONSISTING OF A 3/16\" TEMPERED OUTBOARD LITE-AIR-LAMINATED INBOARD LITE CONSISTING OF 1/8\" TEMP - .090 SENTRY GLASPLUS INTERLAYER - 1/8\" TEMP PER ASTM E 1300.
 - 6) ALLOWABLE STRESS INCREASE OF 1/3 WAS NOT USED IN THE DESIGN OF THE PRODUCT SHOWN HEREIN. WIND LOAD DURATION FACTOR Cd=1.6 WAS USED FOR WOOD ANCHOR CALCULATIONS.
 - 7) FOR ANCHORING INTO WOOD FRAMING OR 2X BUCK USE 3/8\" LAG SCREW OF SUFFICIENT LENGTH TO ACHIEVE A 3\" MINIMUM EMBEDMENT INTO SUBSTRATE. LOCATE ANCHORS AS SHOWN IN ELEVATION AND INSTALLATION DETAILS.
 - 8) ALL FASTENERS TO BE CORROSION RESISTANT.
 - 9) INSTALLATION ANCHOR CAPACITIES FOR PRODUCTS HEREIN ARE BASED ON SUBSTRATE MATERIAL WITH THE FOLLOWING PROPERTIES:
A. WOOD - MINIMUM SPECIFIC GRAVITY OF G=0.42
 - 10) FOR APPROVED CONFIGURATIONS SEE SHEET 3. INDIVIDUAL PANELS MUST NOT EXCEED INDIVIDUAL PANEL SIZE OR MAXIMUM D.L.O. INDICATED HEREIN.
 - 11) FRAME MATERIAL TO BE ALUMINUM 6063-T6

PYRAMID ALUMINUM FIXED SKYLIGHT
PLAN VIEW

DESIGN PRESSURE RATING	IMPACT RATING
±65.0PSF	LARGE MISSILE IMPACT

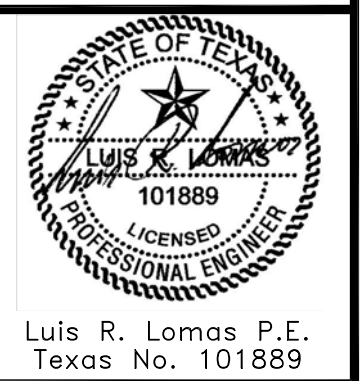
TABLE OF CONTENTS	
SHEET NO.	DESCRIPTION
1	PLAN VIEW AND GENERAL NOTES
2	ADDITIONAL ELEVATIONS
3	APPROVED CONFIGURATIONS
4 - 8	INSTALLATION DETAILS

SOLAR INNOVATIONS, INC.
234 EAST ROSEBUD ROAD
PINE GROVE, PA 17963

PYRAMID ALUMINUM FIXED SKYLIGHT
IMPACT RESISTANT
PLAN VIEW AND GENERAL NOTES

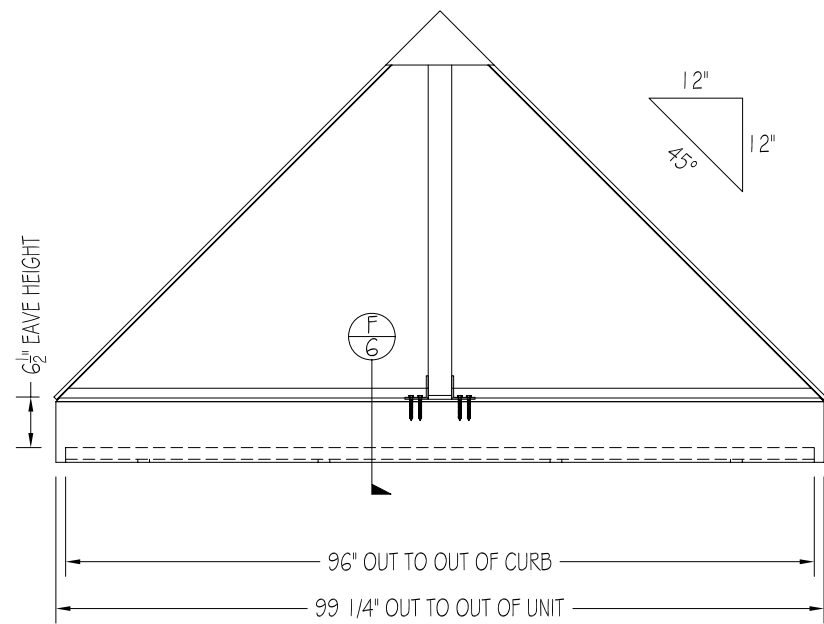
DRAWN: R.L.	DWG NO. 08-01068	REV A
SCALE NTS	DATE 08/04/10	SHEET 1 OF 8

SIGNED: 04/15/2011

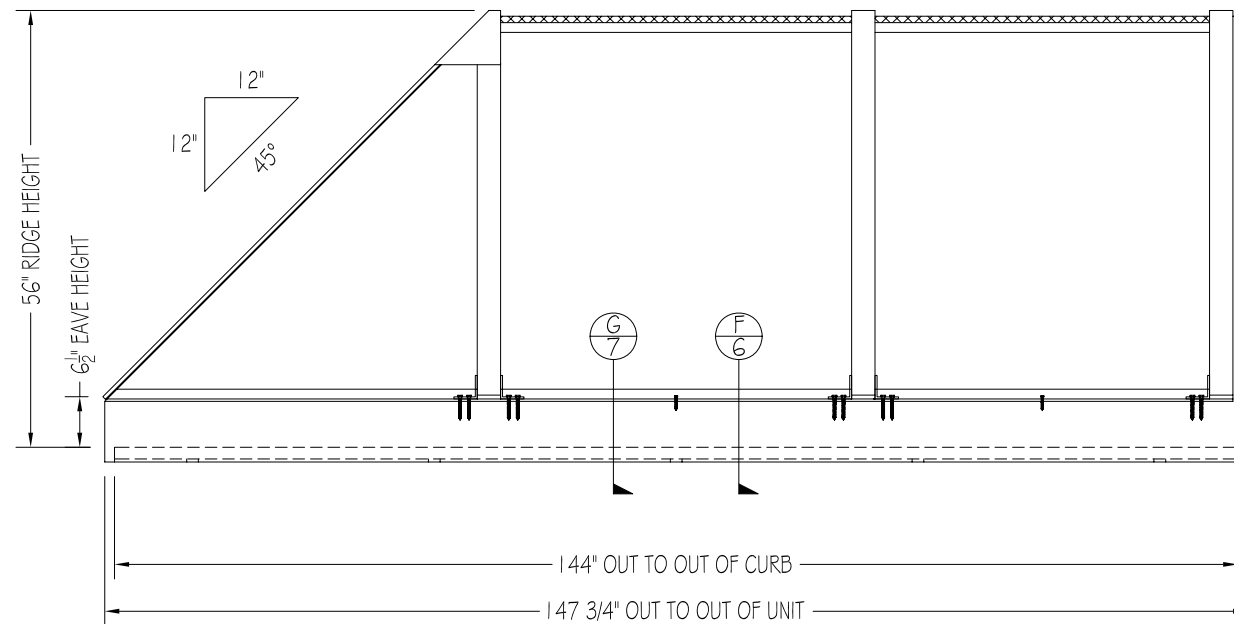


Luis R. Lomas P.E.
Texas No. 101889

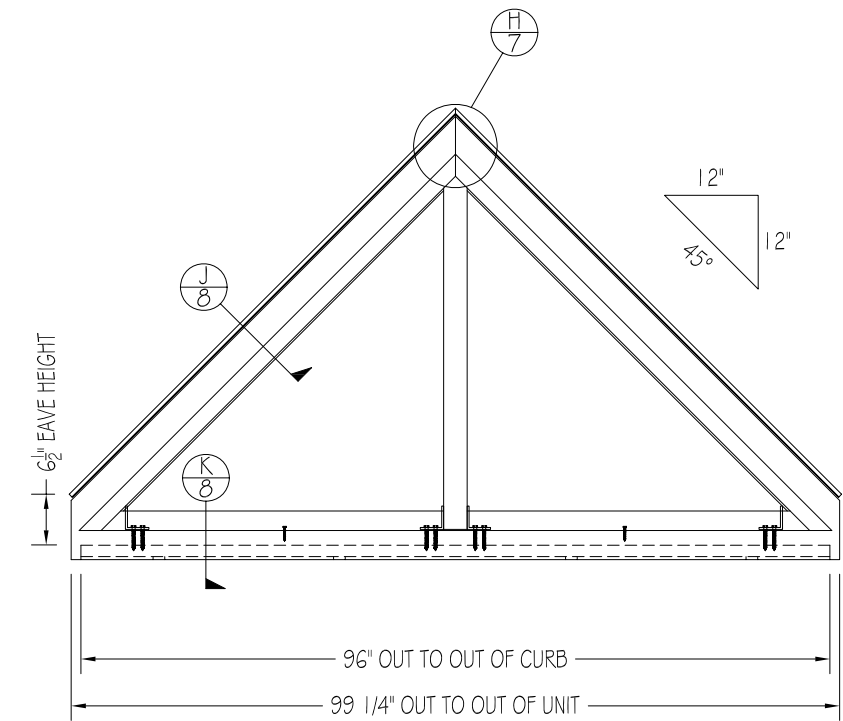
REVISIONS			
REV	DESCRIPTION	DATE	APPROVED
A	REMOVED 32" CURB	04/15/11	R.L.



FRONT ELEVATION



SIDE ELEVATION



REAR ELEVATION

SOLAR INNOVATIONS, INC.

234 EAST ROSEBUD ROAD
PINE GROVE, PA 17963

PYRAMID ALUMINUM FIXED SKYLIGHT
IMPACT RESISTANT
ADDITIONAL ELEVATIONS

DRAWN:

R.L.

DWG NO.

08-01068

REV

A

SCALE NTS

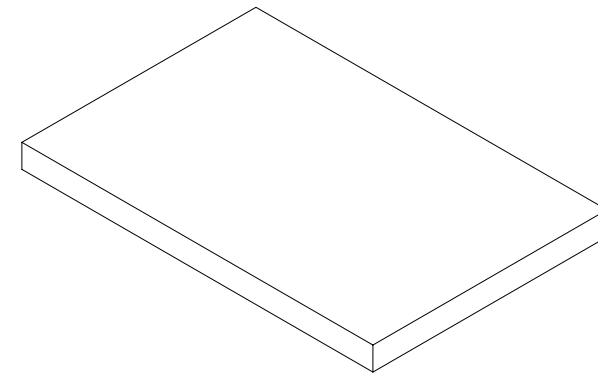
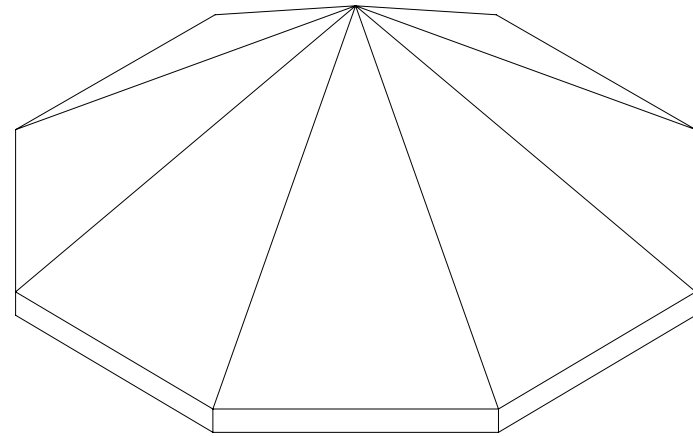
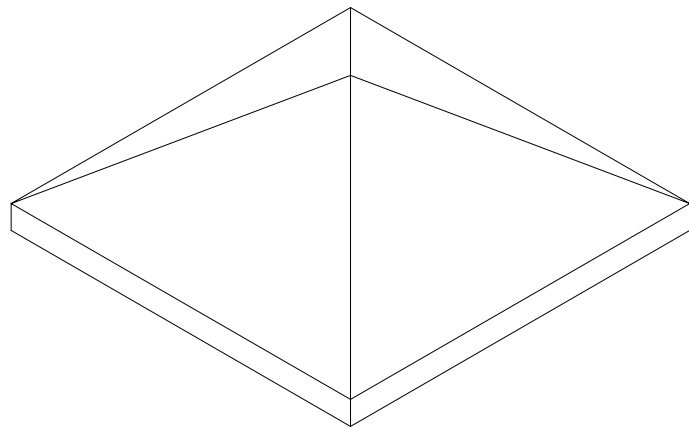
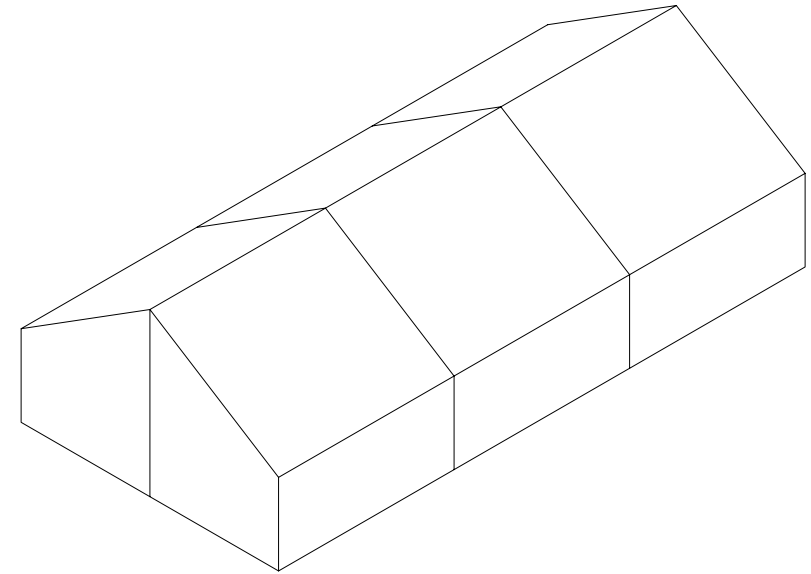
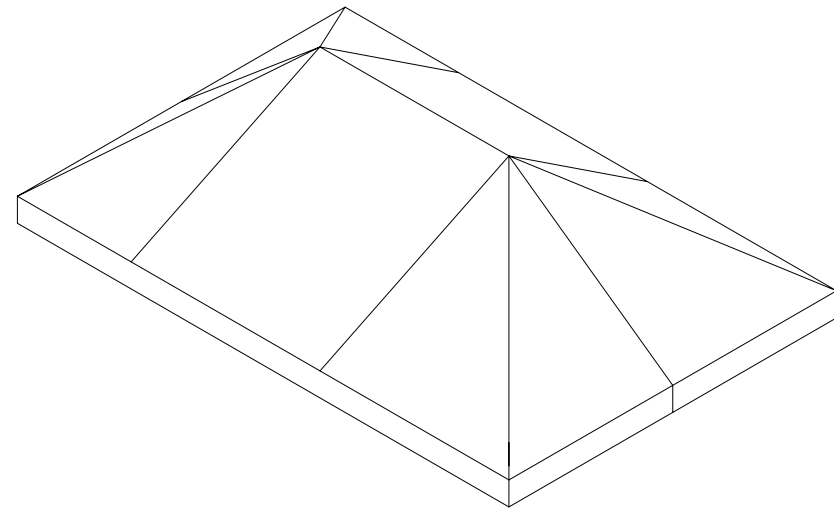
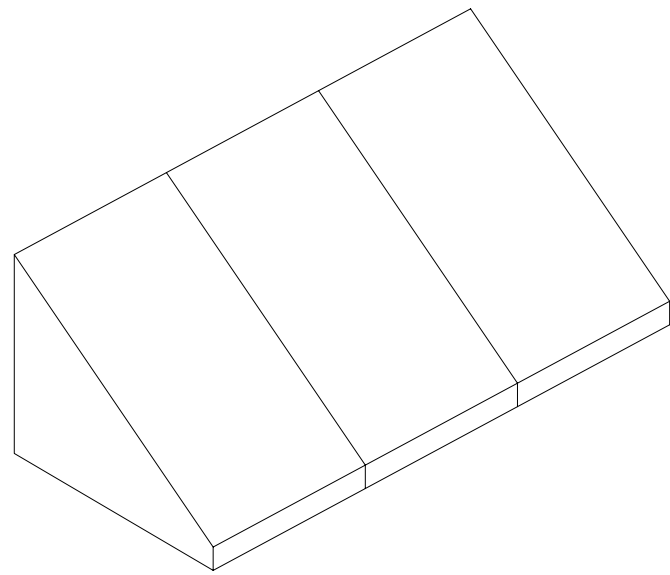
DATE 08/04/10

SHEET 2 OF 8



Luis R. Lomas P.E.
Texas No. 101889

REVISIONS			
REV	DESCRIPTION	DATE	APPROVED
A	REMOVED 32" CURB	04/15/11	R.L.



SOLAR INNOVATIONS, INC.
 234 EAST ROSEBUD ROAD
 PINE GROVE, PA 17963

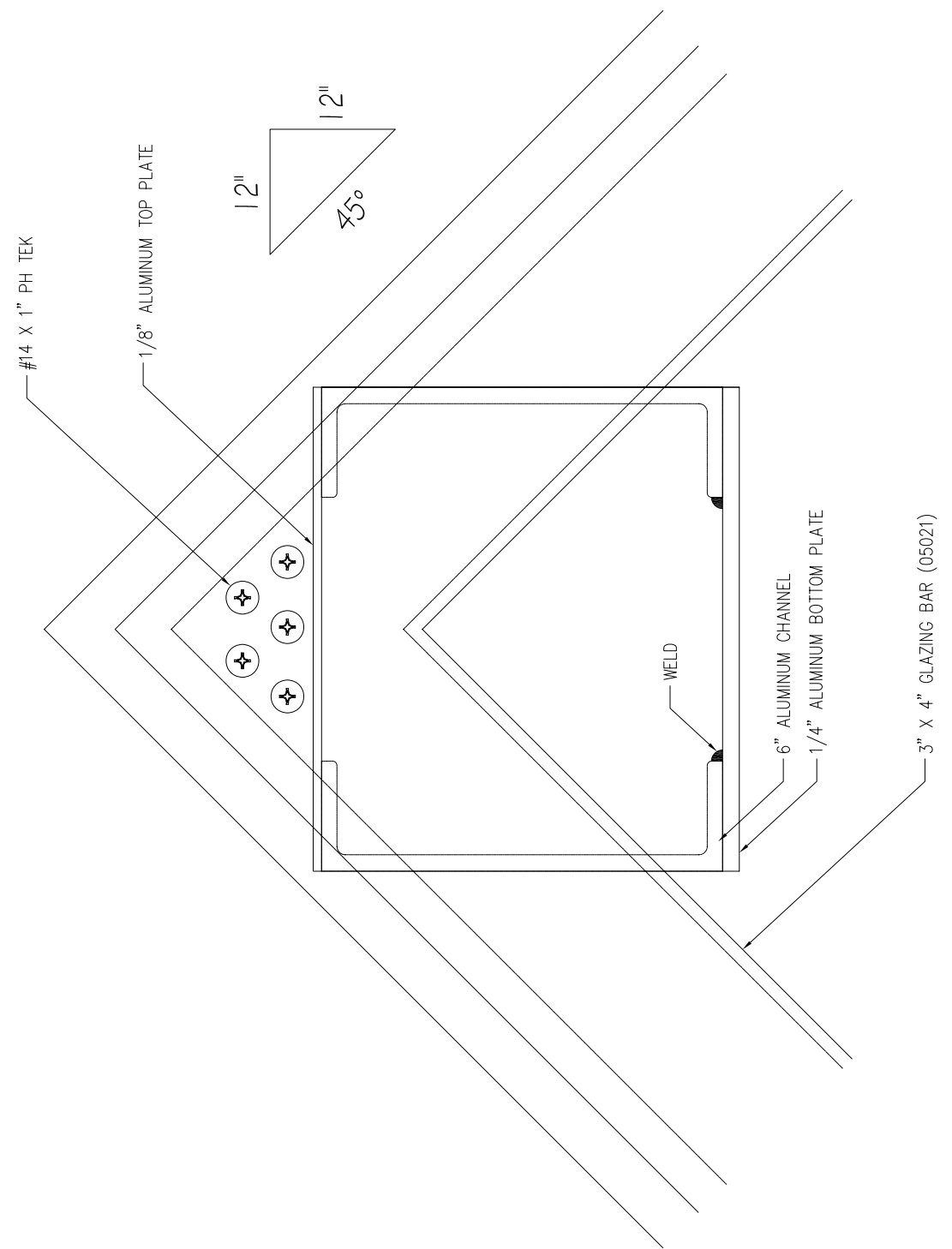
PYRAMID ALUMINUM FIXED SKYLIGHT
 IMPACT RESISTANT
 APPROVED CONFIGURATIONS

DRAWN: R.L.	DWG NO. 08-01068	REV A
SCALE NTS	DATE 08/04/10	SHEET 3 OF 8

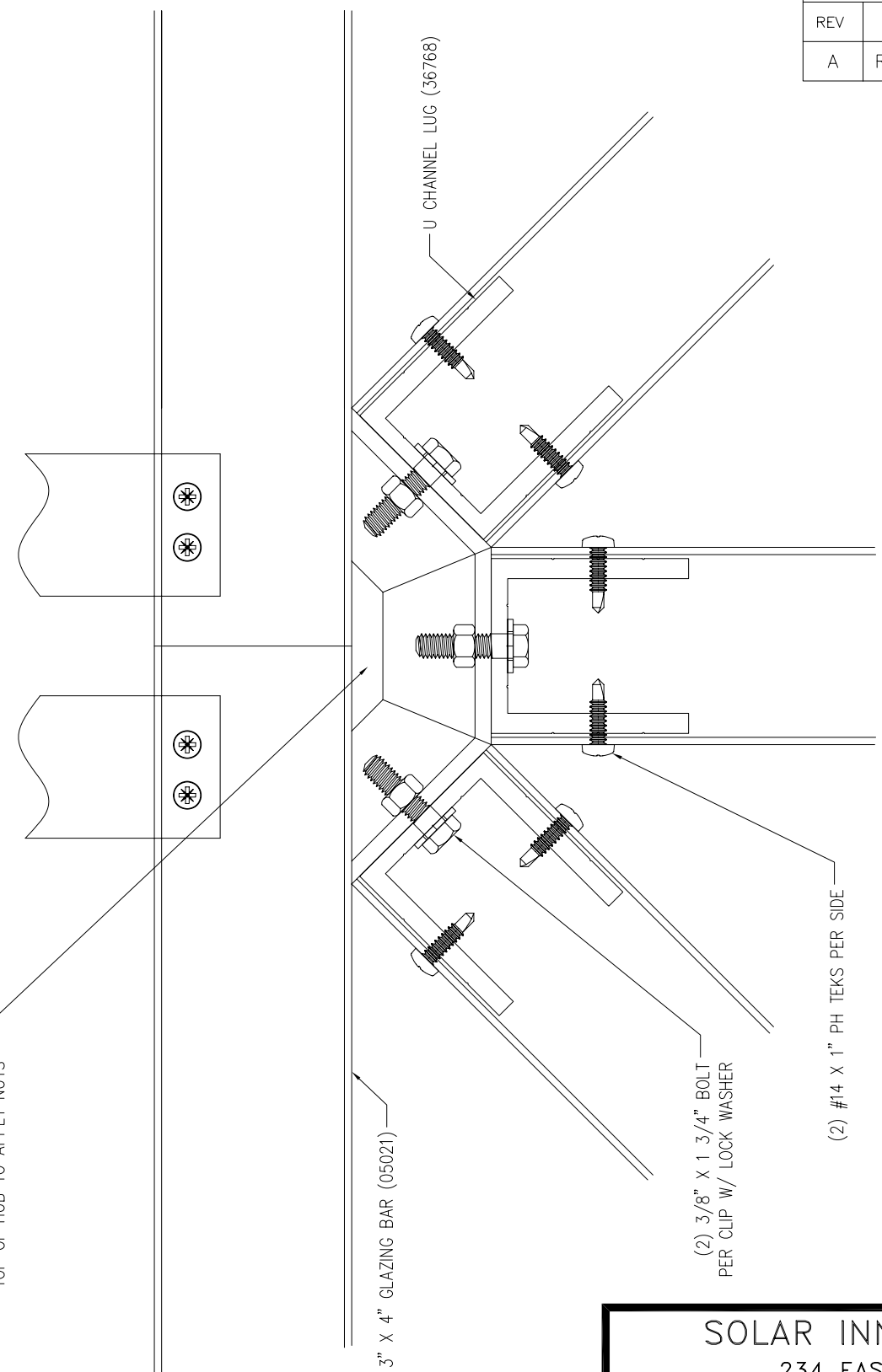


Luis R. Lomas P.E.
 Texas No. 101889

REVISIONS			
REV	DESCRIPTION	DATE	APPROVED
A	REMOVED 32" CURB	04/15/11	R.L.



NOTE: LEAVE ACCESS HOLE IN TOP OF HUB TO APPLY NUTS



DETAIL "A" HUB LAYOUT

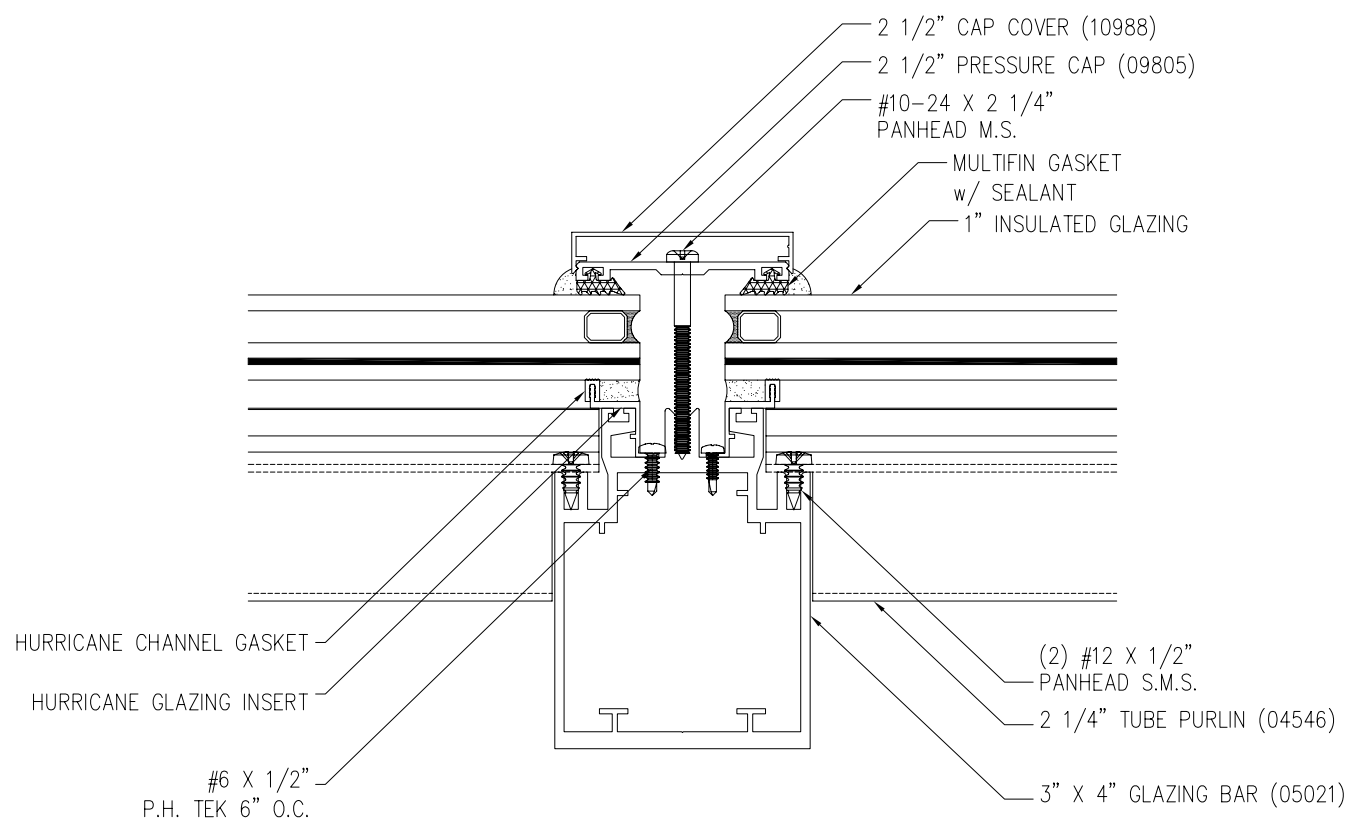
SOLAR INNOVATIONS, INC.
 234 EAST ROSEBUD ROAD
 PINE GROVE, PA 17963

PYRAMID ALUMINUM FIXED SKYLIGHT
 IMPACT RESISTANT
 INSTALLATION DETAILS

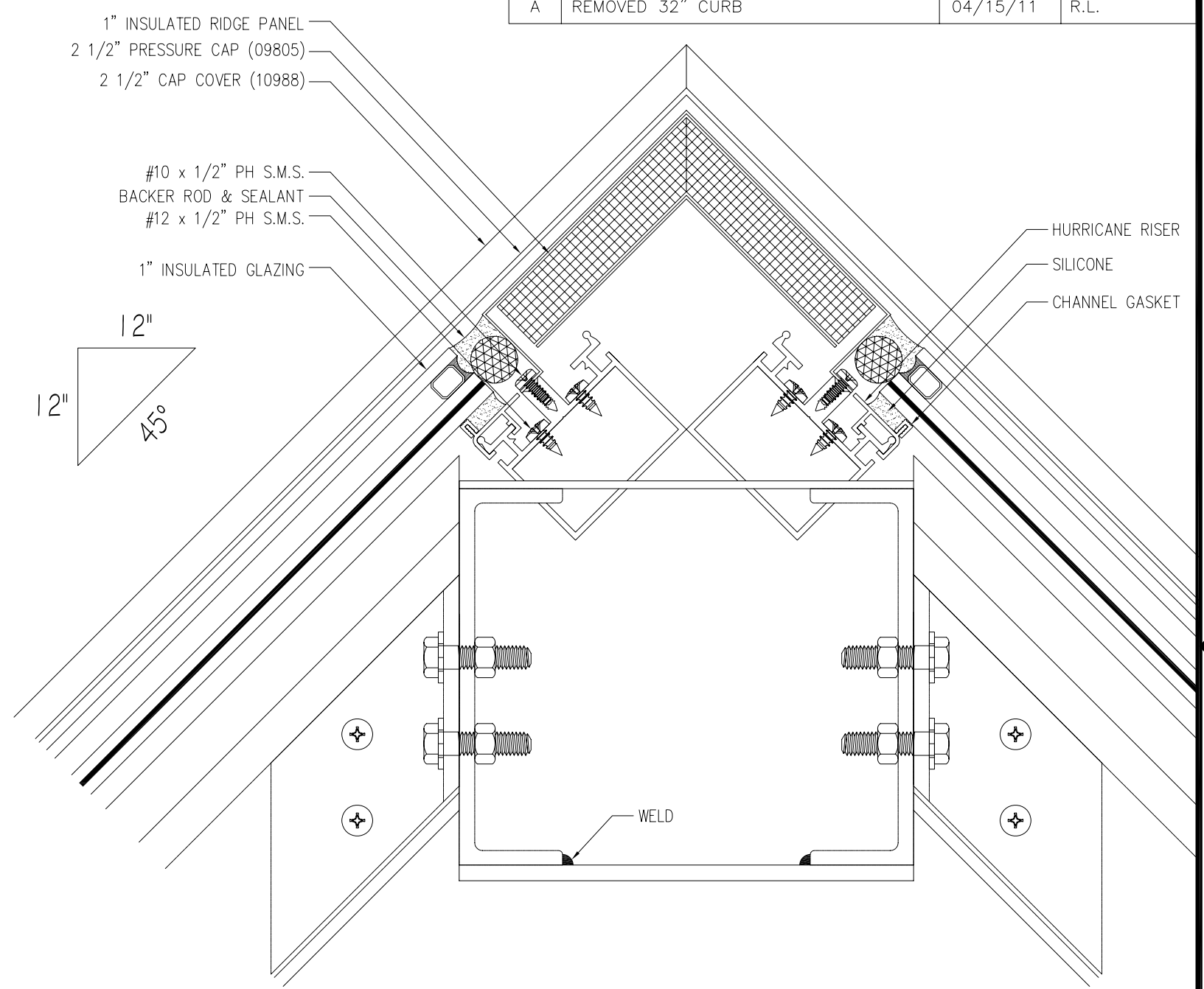
DRAWN: R.L.	DWG NO. 08-01068	REV A
SCALE NTS	DATE 08/04/10	SHEET 4 OF 8

Luis R. Lomas P.E.
 Texas No. 101889

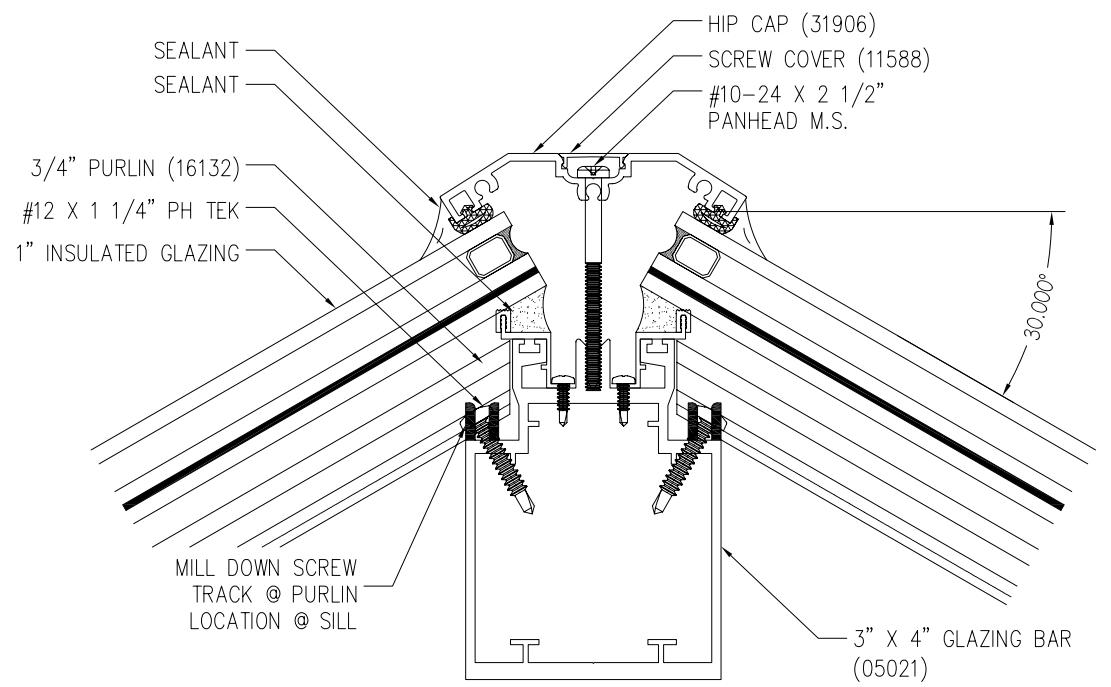
REVISIONS			
REV	DESCRIPTION	DATE	APPROVED
A	REMOVED 32" CURB	04/15/11	R.L.



SECTION "C"
3X4 GLAZING BAR DETAIL



SECTION "B"
RIDGE DETAIL



SECTION "D"
3X4 HIP RAFTER

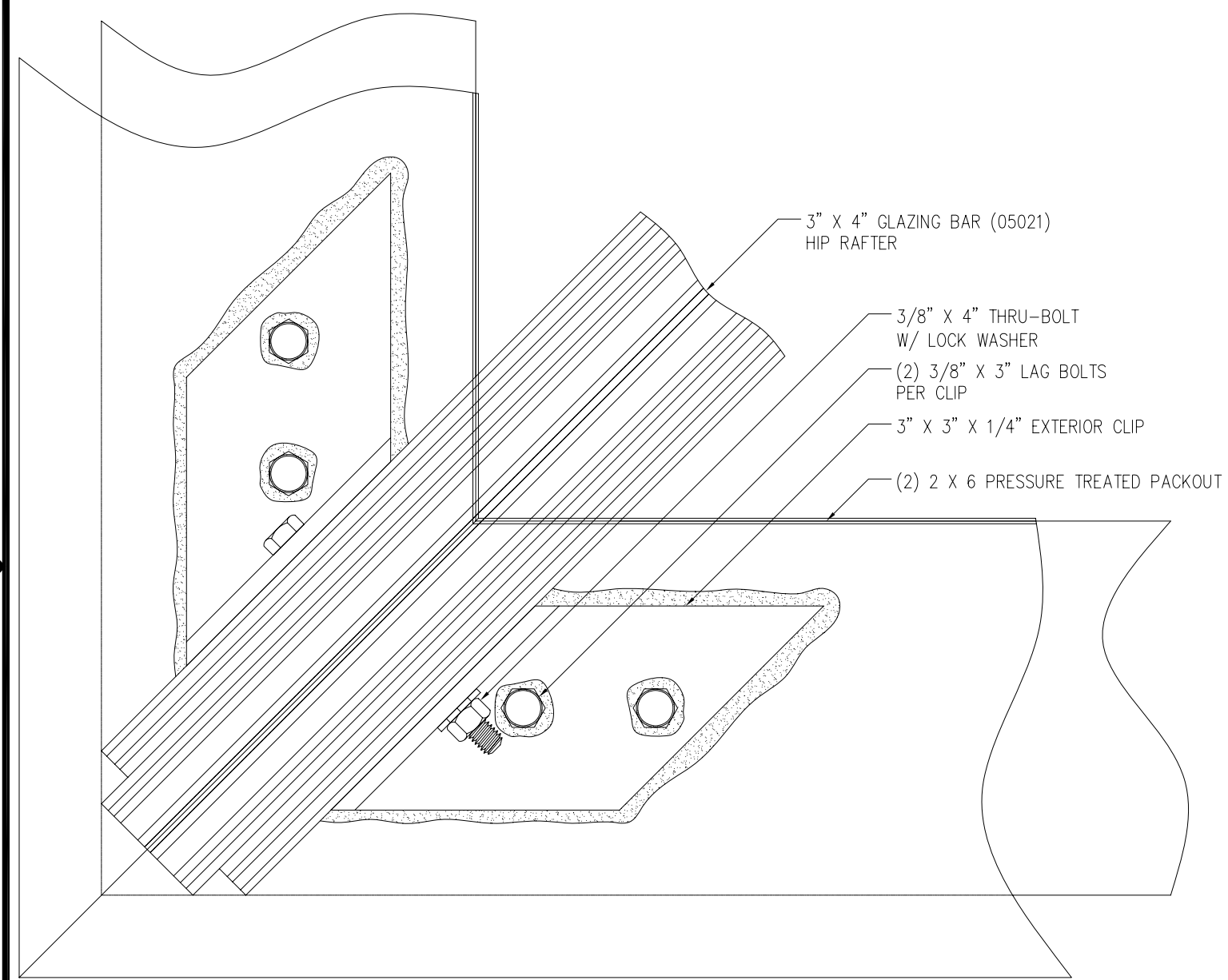
SOLAR INNOVATIONS, INC.
234 EAST ROSEBUD ROAD
PINE GROVE, PA 17963

**PYRAMID ALUMINUM FIXED SKYLIGHT
IMPACT RESISTANT
INSTALLATION DETAILS**

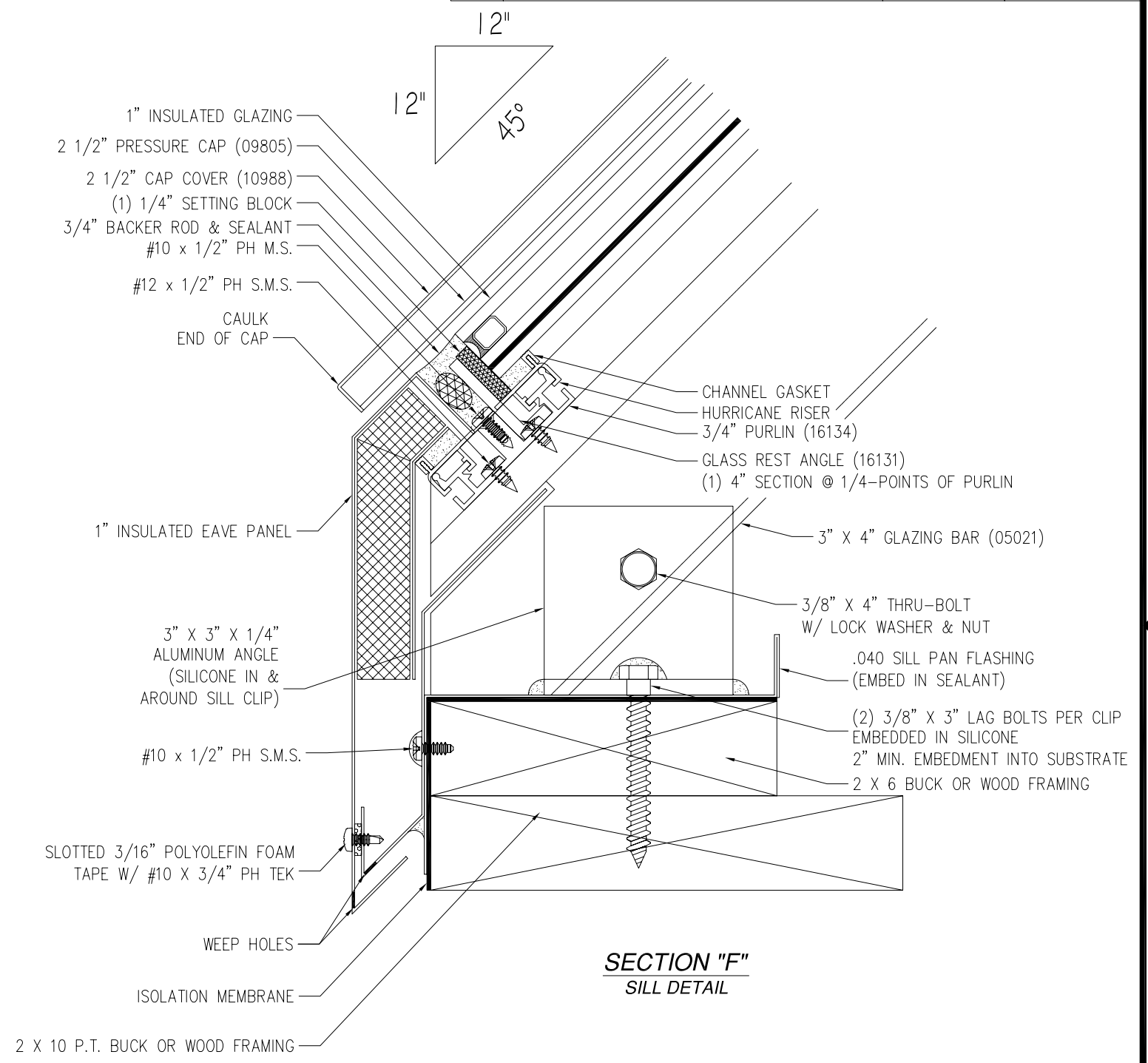
DRAWN: R.L.	DWG NO. 08-01068	REV A
SCALE NTS	DATE 08/04/10	SHEET 5 OF 8

Luis R. Lomas P.E.
Texas No. 101889

REVISIONS			
REV	DESCRIPTION	DATE	APPROVED
A	REMOVED 32" CURB	04/15/11	R.L.



VIEW "E"
HIP BAR PLAN VIEW



SECTION "F"
SILL DETAIL

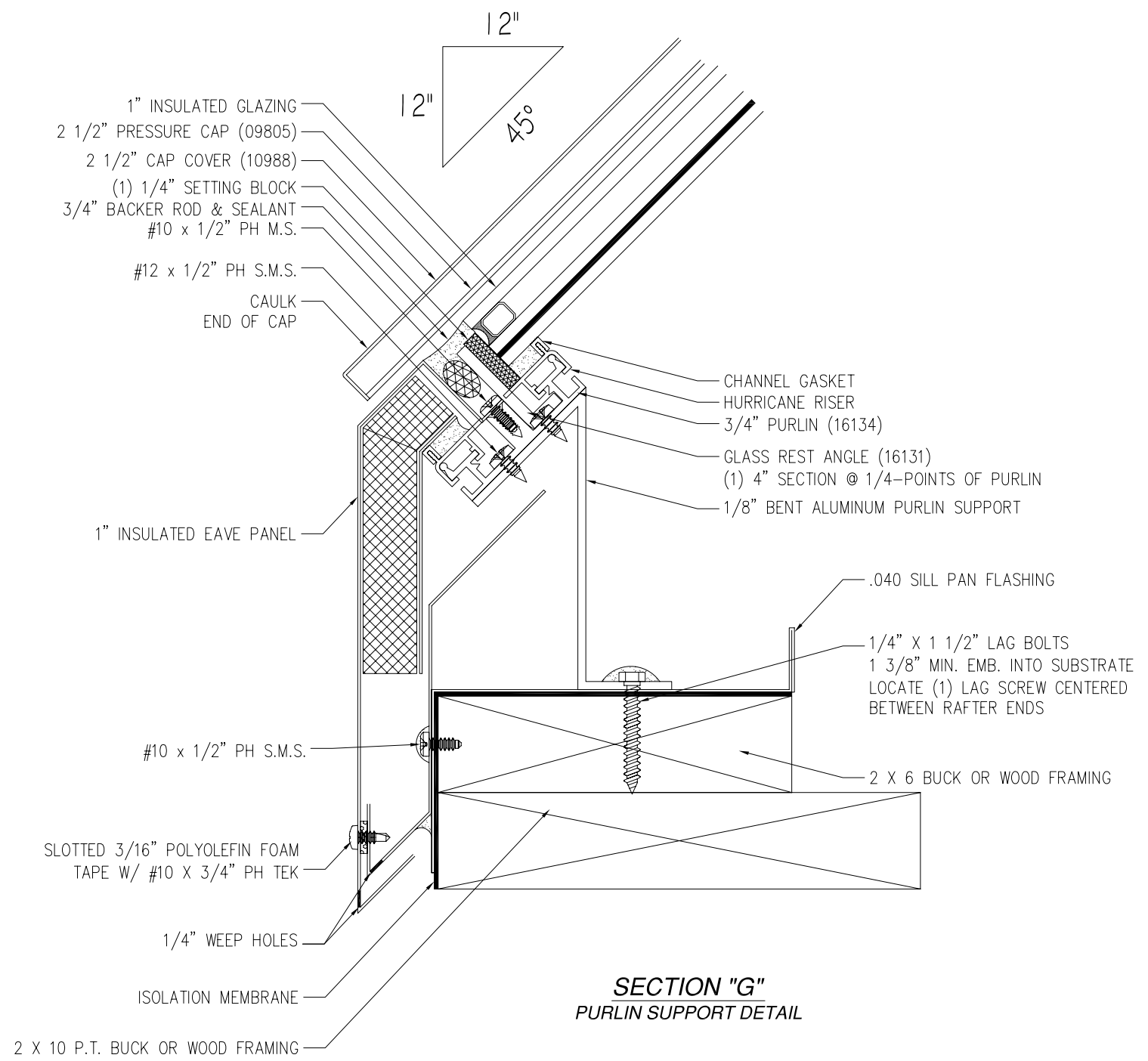
SOLAR INNOVATIONS, INC.
234 EAST ROSEBUD ROAD
PINE GROVE, PA 17963

**PYRAMID ALUMINUM FIXED SKYLIGHT
IMPACT RESISTANT
INSTALLATION DETAILS**

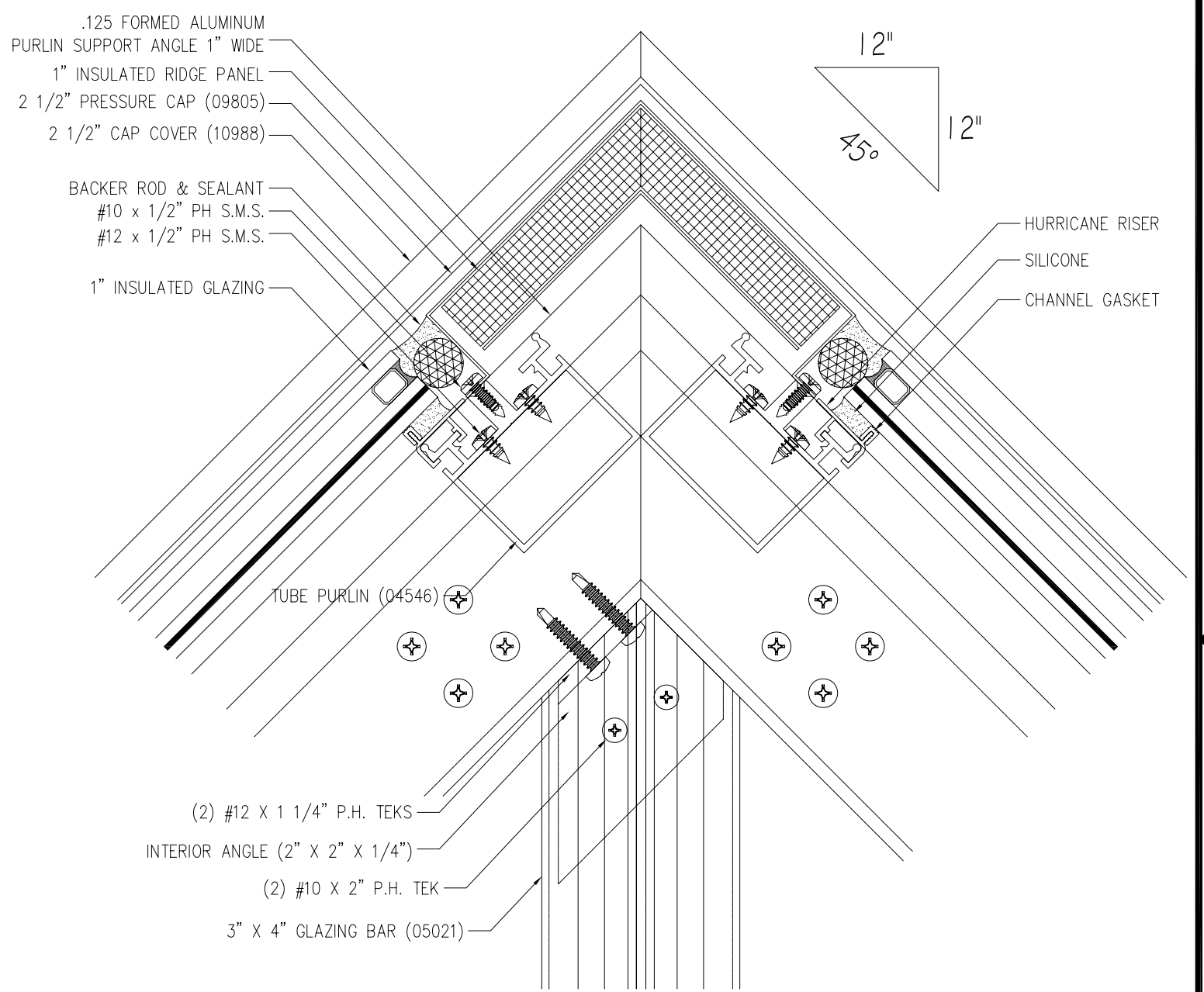
DRAWN: R.L.	DWG NO. 08-01068	REV A
SCALE NTS	DATE 08/04/10	SHEET 6 OF 8

Luis R. Lomas P.E.
Texas No. 101889

REVISIONS			
REV	DESCRIPTION	DATE	APPROVED
A	REMOVED 32" CURB	04/15/11	R.L.



SECTION "G"
PURLIN SUPPORT DETAIL



VIEW "H"
RIDGE DETAIL AT GABLE END

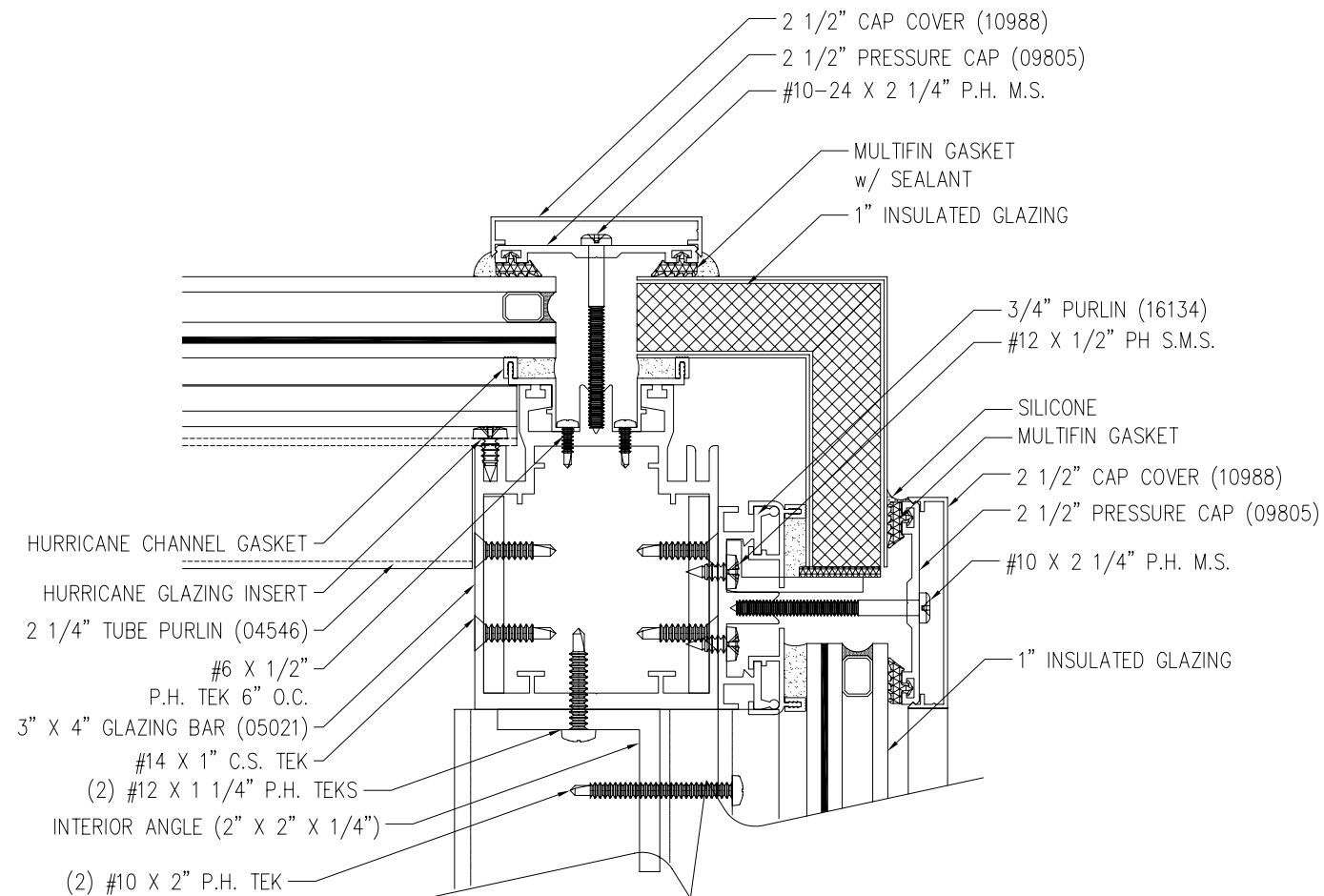
SOLAR INNOVATIONS, INC.
234 EAST ROSEBUD ROAD
PINE GROVE, PA 17963

**PYRAMID ALUMINUM FIXED SKYLIGHT
IMPACT RESISTANT
INSTALLATION DETAILS**

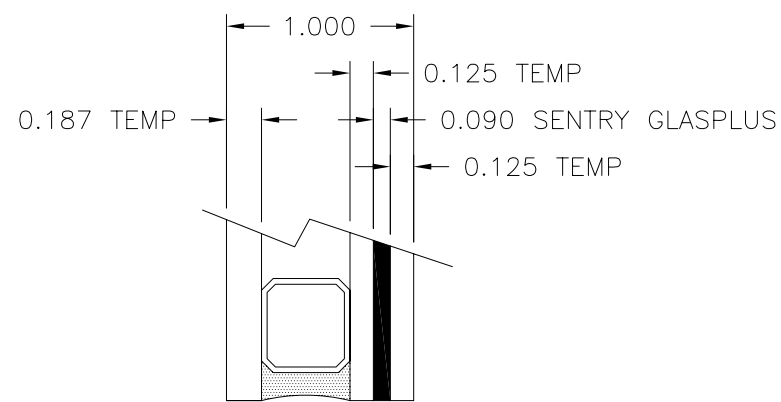
DRAWN: R.L.	DWG NO. 08-01068	REV A
SCALE NTS	DATE 08/04/10	SHEET 7 OF 8

Luis R. Lomas P.E.
Texas No. 101889

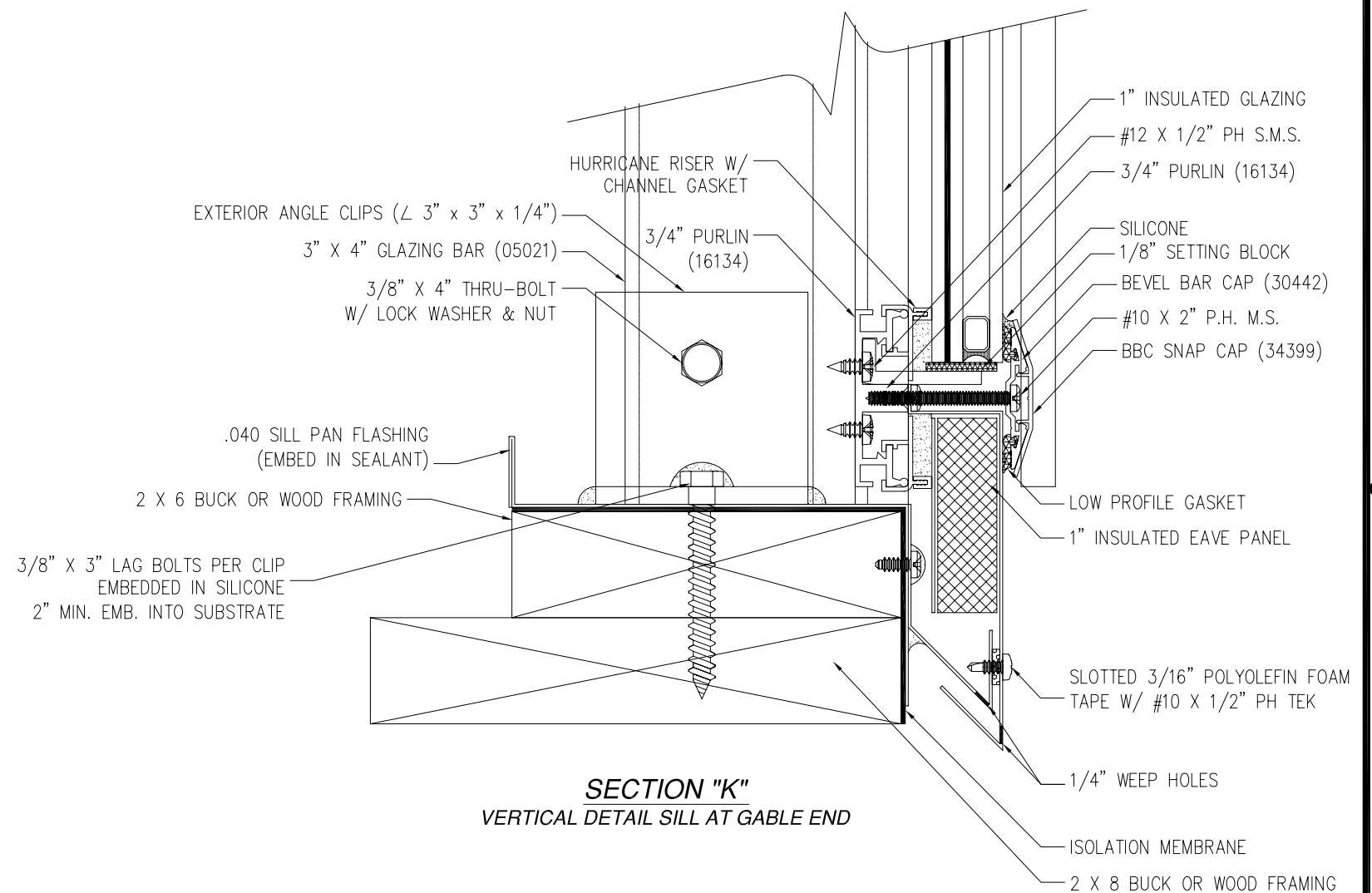
REVISIONS			
REV	DESCRIPTION	DATE	APPROVED
A	REMOVED 32" CURB	04/15/11	R.L.



SECTION "J"
VERTICAL DETAIL AT GABLE END



GLASS DETAIL



SECTION "K"
VERTICAL DETAIL SILL AT GABLE END

SOLAR INNOVATIONS, INC.
234 EAST ROSEBUD ROAD
PINE GROVE, PA 17963

PYRAMID ALUMINUM FIXED SKYLIGHT
IMPACT RESISTANT
INSTALLATION AND GLAZING DETAILS

DRAWN: R.L.	DWG NO. 08-01068	REV A
SCALE NTS	DATE 08/04/10	SHEET 8 OF 8



Luis R. Lomas P.E.
Texas No. 101889