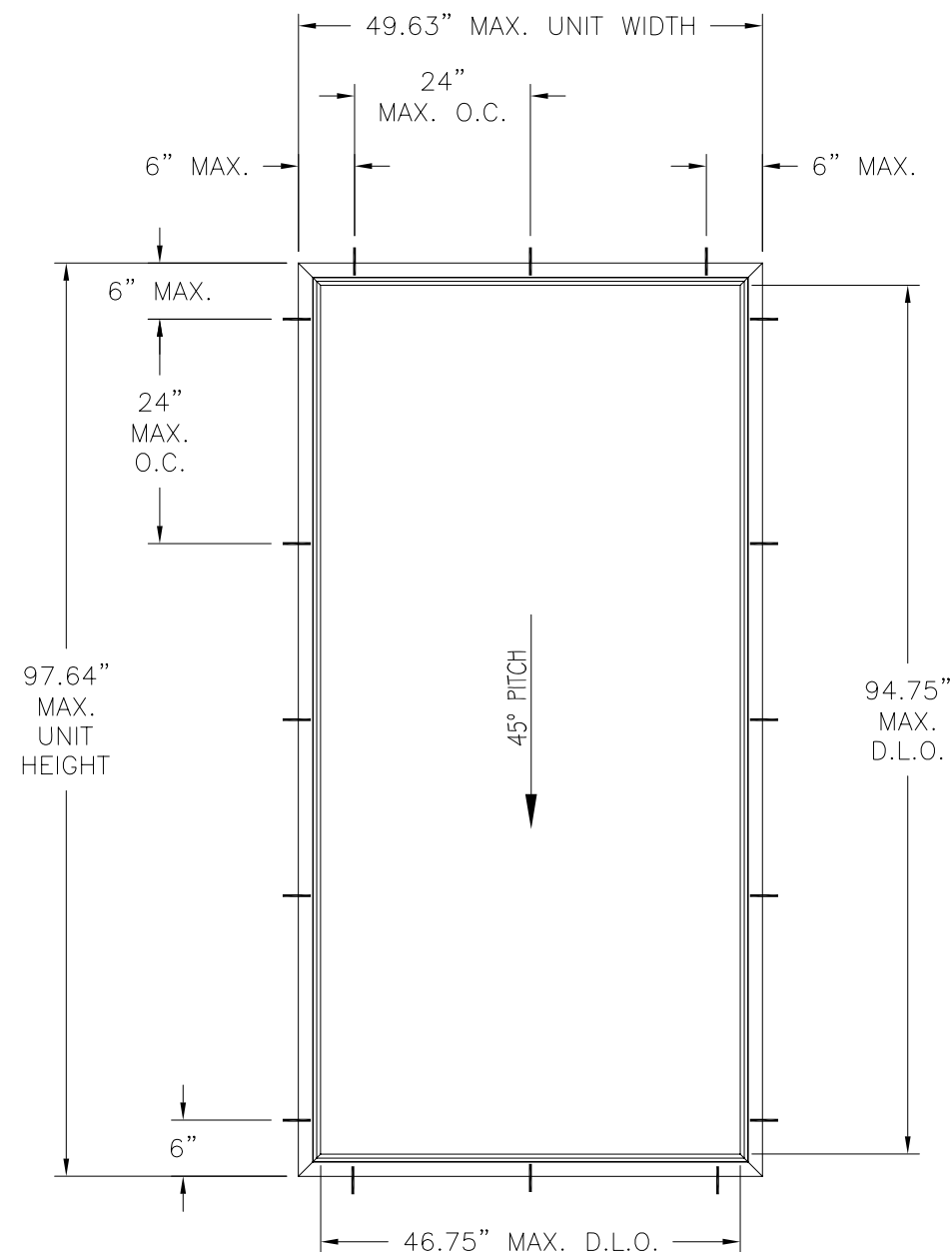


REVISIONS			
REV	DESCRIPTION	DATE	APPROVED



SIDE GLAZED SKYLIGHT
EXTERIOR VIEW

DESIGN PRESSURE RATING	IMPACT RATING
±65PSF	LARGE AND SMALL MISSILE IMPACT

NOTES:

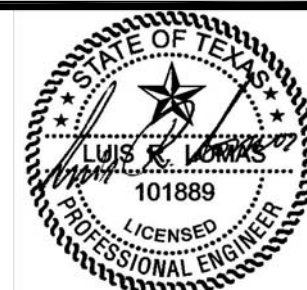
- 1) THE PRODUCT SHOWN HEREIN IS DESIGNED AND MANUFACTURED TO COMPLY WITH REQUIREMENTS OF THE 2006 INTERNATIONAL BUILDING CODE AND 2006 INTERNATIONAL RESIDENTIAL CODE WITH TEXAS STATE MODIFICATIONS.
- 2) WOOD FRAMING AND MASONRY OPENING TO BE DESIGNED AND ANCHORED TO PROPERLY TRANSFER ALL LOADS TO STRUCTURE. FRAMING AND MASONRY OPENING IS THE RESPONSIBILITY OF THE ARCHITECT OR ENGINEER OF RECORD.
- 3) 1X BUCK OVER MASONRY/CONCRETE IS OPTIONAL. WHERE 1X BUCK IS NOT USED DISSIMILAR MATERIALS MUST BE SEPARATED WITH APPROVED COATING OR MEMBRANE. SELECTION OF COATING OR MEMBRANE IS THE RESPONSIBILITY OF THE ARCHITECT OR ENGINEER OF RECORD.
- 4) APPROVED IMPACT PROTECTIVE SYSTEM IS NOT REQUIRED FOR THIS PRODUCT IN WIND BORNE DEBRIS REGIONS.
- 5) UNITS MUST BE GLAZED WITH 1" IGU CONSISTING OF A 3/16" TEMPERED OUTBOARD LITE - AIR - LAMINATED INBOARD LITE CONSISTING OF 3/16" ANN - .090 SENTRY GLASPLUS INTERLAYER - 3/16" ANN PER ASTM E 1300.
- 6) ALLOWABLE STRESS INCREASE OF 1/3 WAS NOT USED IN THE DESIGN OF THE PRODUCT SHOWN HEREIN. WIND LOAD DURATION FACTOR Cd=1.6 WAS USED FOR WOOD ANCHOR CALCULATIONS.
- 7) FOR ANCHORING INTO WOOD FRAMING OR 2X BUCKUSE 1/4" LAG SCREWS OF SUFFICIENT LENGTH TO ACHIEVE A 1 1/2" MINIMUM EMBEDMENT INTO SUBSTRATE. LOCATE ANCHORS AS SHOWN IN ELEVATION AND INSTALLATION DETAILS.
- 8) ALL FASTENERS TO BE CORROSION RESISTANT.
- 9) INSTALLATION ANCHOR CAPACITIES FOR PRODUCTS HEREIN ARE BASED ON SUBSTRATE MATERIAL WITH THE FOLLOWING PROPERTIES:
A. WOOD - MINIMUM SPECIFIC GRAVITY OF G=0.42
- 10) FRAME MATERIAL TO BE ALUMINUM 6063-T6 .060" THICK.

SOLAR INNOVATIONS, INC.

31 ROBERTS RD
PINE GROVE, PA 17963

SIDE GLAZED SKYLIGHT
IMPACT 49 5/8" x 97 5/8"
ELEVATION AND NOTES

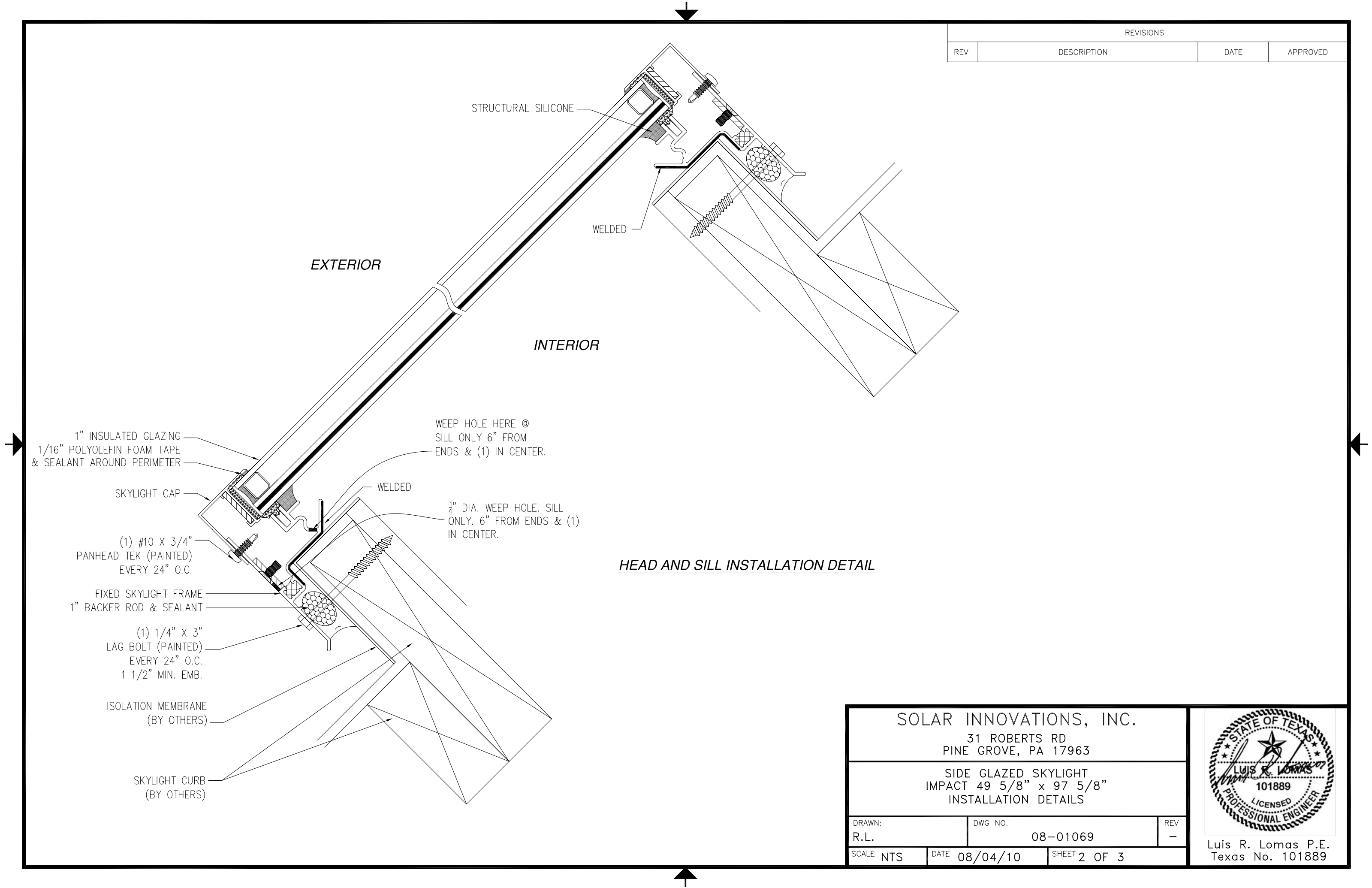
DRAWN: R.L.	DWG NO. 08-01069	REV -
SCALE NTS	DATE 08/04/10	SHEET 1 OF 3



Luis R. Lomas P.E.
Texas No. 101889

TABLE OF CONTENTS	
SHEET NO.	DESCRIPTION
1	ELEVATION AND GENERAL NOTES
2 - 3	INSTALLATION DETAILS

REVISIONS			
REV	DESCRIPTION	DATE	APPROVED



HEAD AND SILL INSTALLATION DETAIL

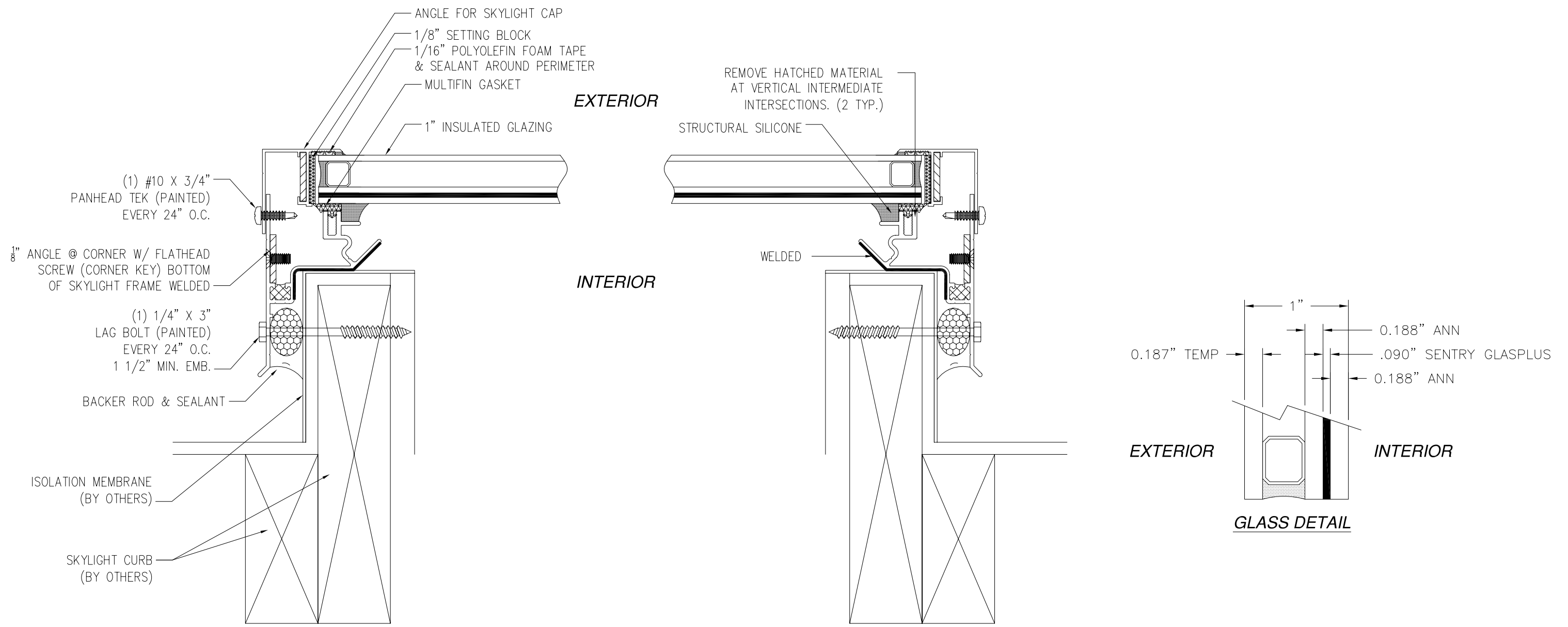
SOLAR INNOVATIONS, INC.
 31 ROBERTS RD
 PINE GROVE, PA 17963

SIDE GLAZED SKYLIGHT
 IMPACT 49 5/8" x 97 5/8"
 INSTALLATION DETAILS

DRAWN: R.L.	DWG NO. 08-01069	REV -
SCALE NTS	DATE 08/04/10	SHEET 2 OF 3

Luis R. Lomas P.E.
 Texas No. 101889

REVISIONS			
REV	DESCRIPTION	DATE	APPROVED



JAMBS INSTALLATION DETAIL

SOLAR INNOVATIONS, INC.
 31 ROBERTS RD
 PINE GROVE, PA 17963
 SIDE GLAZED SKYLIGHT
 IMPACT 49 5/8" x 97 5/8"
 INSTALLATION DETAILS

DRAWN: R.L.	DWG NO. 08-01069	REV -
SCALE NTS	DATE 08/04/10	SHEET 3 OF 3

STATE OF TEXAS
 LUIS R. LOMAS
 101889
 LICENSED PROFESSIONAL ENGINEER
 Luis R. Lomas P.E.
 Texas No. 101889