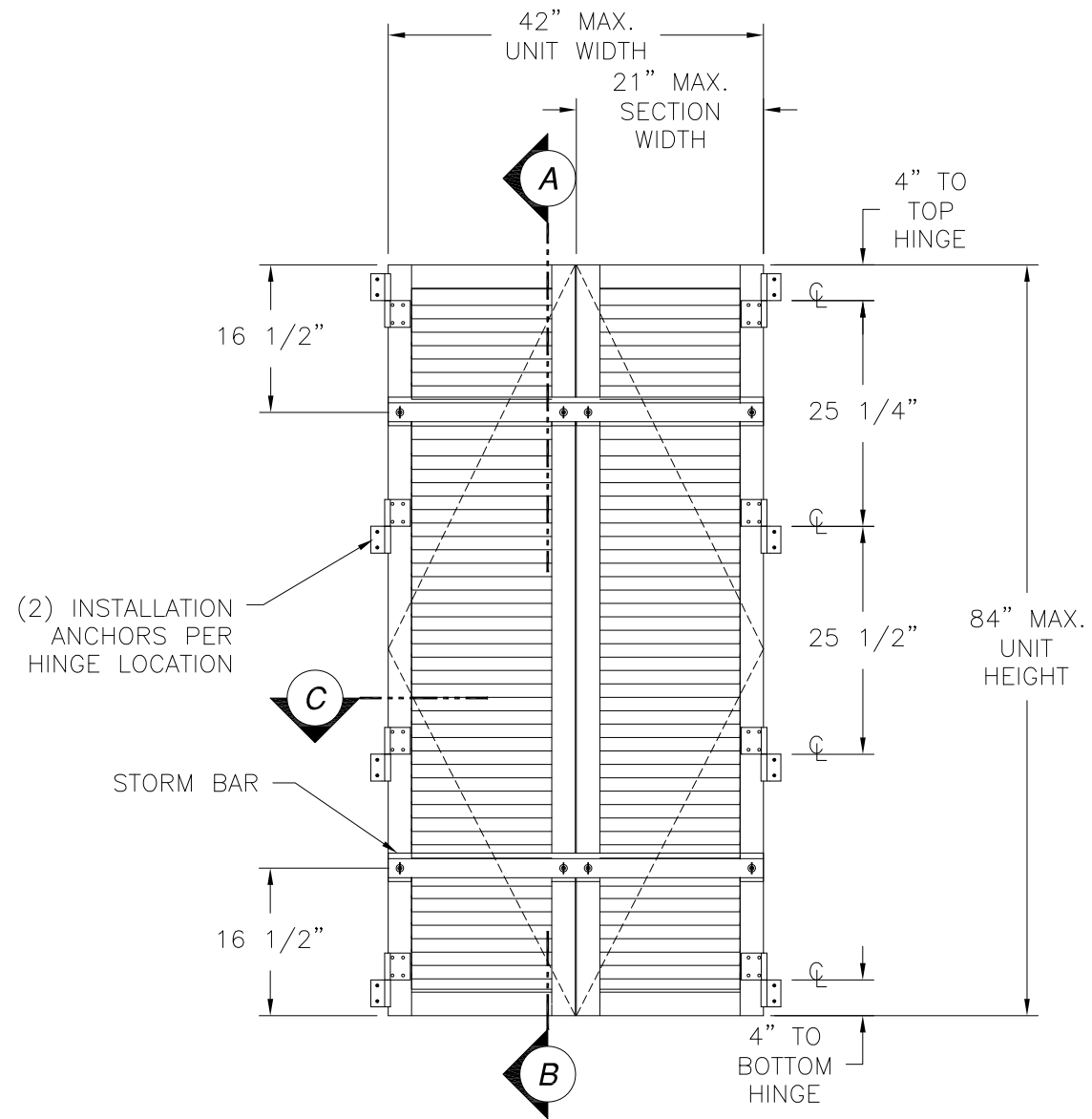


| REVISIONS | | | |
|-----------|-------------|------|----------|
| REV | DESCRIPTION | DATE | APPROVED |



NOTES:

- 1) THE PRODUCT SHOWN HEREIN IS DESIGNED AND MANUFACTURED TO COMPLY WITH REQUIREMENTS OF THE 2006 IBC AND 2006 IRC WITH STATE OF TEXAS MODIFICATIONS.
- 2) WOOD FRAMING AND MASONRY OPENING TO BE DESIGNED AND ANCHORED TO PROPERLY TRANSFER ALL LOADS TO STRUCTURE. FRAMING AND MASONRY OPENING IS THE RESPONSIBILITY OF THE ARCHITECT OR ENGINEER OF RECORD.
- 3) ALLOWABLE STRESS INCREASE OF 1/3 WAS NOT USED IN THE DESIGN OF THE PRODUCT SHOWN HEREIN. WIND LOAD DURATION FACTOR Cd=1.6 WAS USED FOR WOOD ANCHOR CALCULATIONS.
- 4) SHUTTER FRAME AND BLADES MATERIAL: ALUMINUM 6063-T6.
- 5) APPROVED IMPACT PROTECTIVE SYSTEM IS NOT REQUIRED FOR THIS PRODUCT IN WIND BORNE DEBRIS REGIONS.
- 6) FOR ANCHORING INTO MASONRY USE 1/4" ITW TAPCONS WITH SUFFICIENT LENGTH TO ACHIEVE A 1 1/4" MINIMUM EMBEDMENT INTO SUBSTRATE WITH 2 5/16" MINIMUM EDGE DISTANCE AND 1 3/4" MINIMUM SEPARATION. LOCATE ANCHORS AS SHOWN IN ELEVATIONS AND INSTALLATION DETAILS.
- 7) FOR ANCHORING INTO WOOD FRAMING OR 2X BUCK OR THROUGH BRICK VEENER INTO WOOD FRAMING OR 2X BUCK USE #10 WOOD SCREW WITH SUFFICIENT LENGTH TO ACHIEVE A 1 3/4" MINIMUM EMBEDMENT INTO SUBSTRATE. LOCATE ANCHORS AS SHOWN IN ELEVATIONS AND INSTALLATION DETAILS.
- 8) FOR ANCHORING INTO MASONRY/CONCRETE USE 1/4" TAPCON WITH SUFFICIENT LENGTH TO ACHIEVE A 1 1/4" MINIMUM EMBEDMENT INTO SUBSTRATE. LOCATE ANCHORS AS SHOWN IN ELEVATIONS AND INSTALLATION DETAILS.
- 9) ALL FASTENERS TO BE CORROSION RESISTANT.
- 10) INSTALLATION ANCHORS SHALL BE INSTALLED IN ACCORDANCE WITH ANCHOR MANUFACTURER'S INSTALLATION INSTRUCTIONS, AND ANCHORS SHALL NOT BE USED IN SUBSTRATES WITH STRENGTHS LESS THAN THE MINIMUM STRENGTH SPECIFIED BELOW:
 - A. WOOD - MINIMUM SPECIFIC GRAVITY OF G=0.42
 - B. CONCRETE - MINIMUM COMPRESSIVE STRENGTH OF 2,000 PSI.
 - C. MASONRY - STRENGTH CONFORMANCE TO ASTM C-90, GRADE N, TYPE 1 (OR GREATER).

COLONIAL STANDARD SHUTTER
EXTERIOR VIEW

| DESIGN PRESSURE RATING | IMPACT RATING |
|------------------------|--------------------------------|
| ±50PSF | LARGE AND SMALL MISSILE IMPACT |

MISSILE LEVEL D, WIND ZONE 4

SIGNED: 09/10/2014

| TABLE OF CONTENTS | |
|-------------------|----------------------------------|
| SHEET NO. | DESCRIPTION |
| 1 - 2 | ELEVATIONS, ANCHORING AND NOTES |
| 3 - 4 | BILL OF MATERIALS AND COMPONENTS |
| 4 - 5 | CROSS SECTIONS |
| 6 - 7 | INSTALLATION DETAILS |

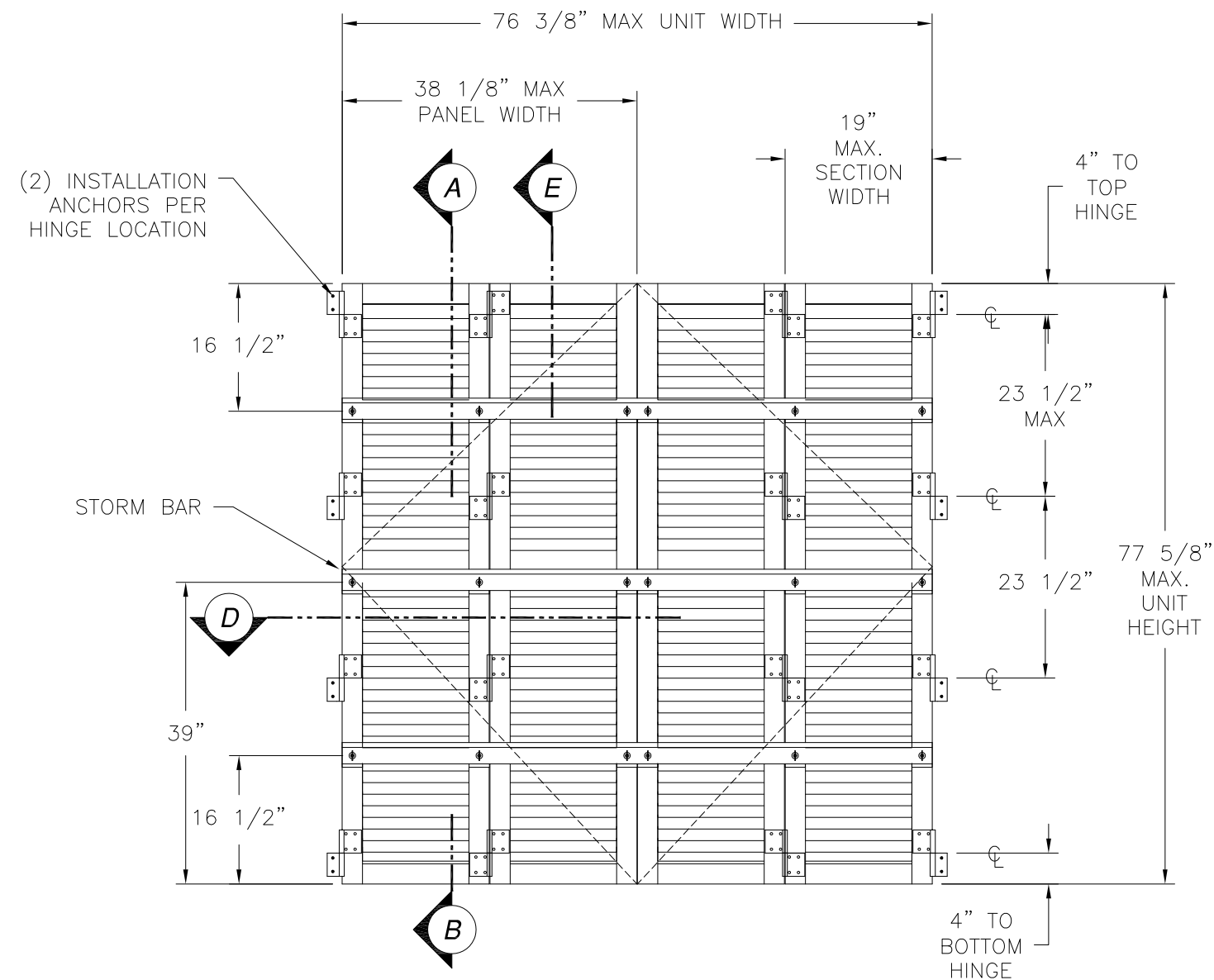
LAS ENTERPRISES
2413 L & A ROAD
METAIRIE, LA 70001

COLONIAL SHUTTER
BI-FOLD & STANDARD - LMI & SMI
STANDARD ELEVATION, ANCHORING & NOTES

| | | |
|----------------|---------------------|-----------------|
| DRAWN: V.L. | DWG NO. 08-02483 | REV - |
| SCALE NTS | DATE 09/08/14 | SHEET 1 OF 7 |

Luis R. Lomas P.E.
TX No.: 101889

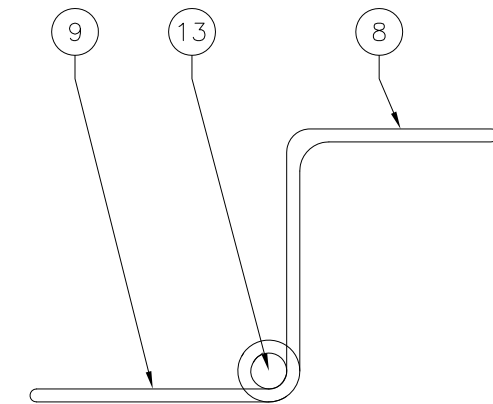
| REVISIONS | | | |
|-----------|-------------|------|----------|
| REV | DESCRIPTION | DATE | APPROVED |



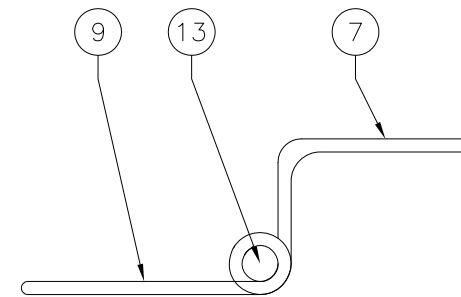
COLONIAL BI-FOLD SHUTTER
EXTERIOR VIEW

| | |
|------------------------|--------------------------------|
| DESIGN PRESSURE RATING | IMPACT RATING |
| ±50PSF | LARGE AND SMALL MISSILE IMPACT |

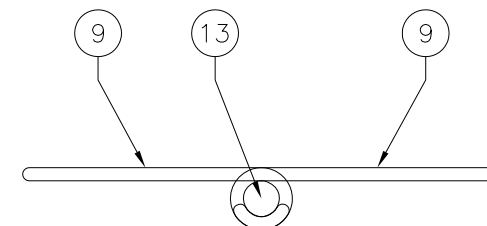
MISSILE LEVEL D, WIND ZONE 4



DOUBLE WALL HINGE ASSY



STANDARD WALL HINGE



BI-FOLD INTERIOR HINGE ASSY

SIGNED: 09/10/2014

LAS ENTERPRISES
2413 L & A ROAD
METAIRIE, LA 70001

COLONIAL SHUTTER
BI-FOLD & STANDARD - LMI & SMI
BI-FOLD ELEVATION, ANCHORING & NOTES

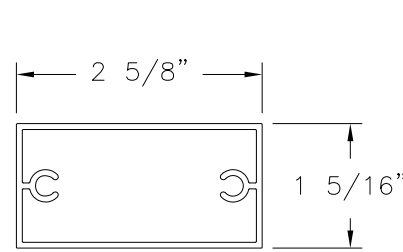
| | | |
|----------------|---------------------|--------------|
| DRAWN: V.L. | DWG NO. 08-02483 | REV - |
| SCALE NTS | DATE 09/08/14 | SHEET 2 OF 7 |



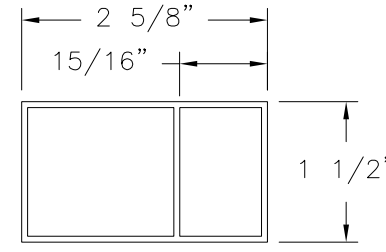
Luis R. Lomas P.E.
TX No.: 101889

| PARTS LIST | | | | |
|------------|-------------|----------------------------|------------------|------------------|
| NO. | PART NUMBER | DESCRIPTION | MANUFACTURER | MATERIAL |
| 1 | 11504A | FRAME TOP/BOTTOM | LAS ENTERPRISES | ALUMINUM 6063-T6 |
| 2 | 11761 | FRAME SIDE | LAS ENTERPRISES | ALUMINUM 6063-T6 |
| 3 | | CLIP | GENESIS TEK, LLC | DELIN POM |
| 4 | | BULLIT | GENESIS TEK, LLC | DELIN POM |
| 5 | 11759 | D/N COLBL W/SCREW COGS | LAS ENTERPRISES | ALUMINUM 6063-T6 |
| 6 | 11759 ALT | D/N COLBL W/O SCREW COGS | LAS ENTERPRISES | ALUMINUM 6063-T6 |
| 7 | 11404 | STANDARD WALL HINGE | LAS ENTERPRISES | ALUMINUM 6063-T6 |
| 8 | 11403 | BI-FOLD WALL HINGE | LAS ENTERPRISES | ALUMINUM 6063-T6 |
| 9 | 11405 | BI-FOLD INTERMEDIATE HINGE | LAS ENTERPRISES | ALUMINUM 6063-T6 |
| 10 | 12115 | F-TRACK | LAS ENTERPRISES | ALUMINUM 6063-T6 |
| 11 | | #14 x 2" PAN HEAD SMS | | |

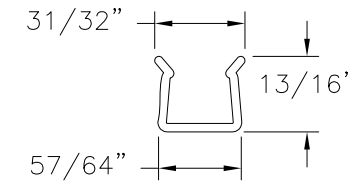
| REVISIONS | | | |
|-----------|-------------|------|----------|
| REV | DESCRIPTION | DATE | APPROVED |
| | | | |



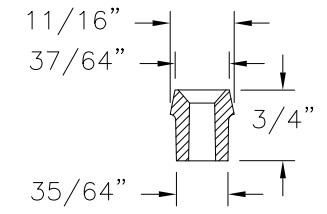
① **FRAME TOP/BOTTOM**
ALUMINUM 6063-T6 .063" THICK



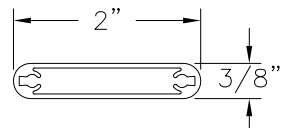
② **FRAME SIDE**
ALUMINUM 6063-T6 .063" THICK



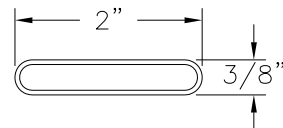
③ **CLIP**
DELIN POM .091" THICK



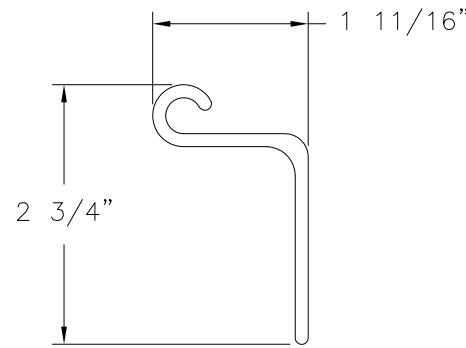
④ **BULLIT**
DELIN POM



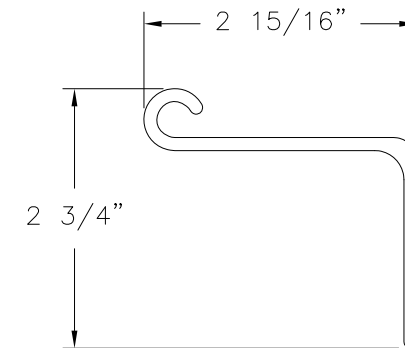
⑤ **D/N COLBL W/SCREW COGS**
ALUMINUM 6063-T6 .050" THICK



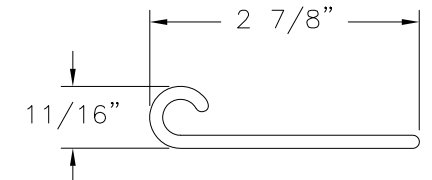
⑥ **D/N COLBL W/O SCREW COGS**
ALUMINUM 6063-T6 .055" THICK



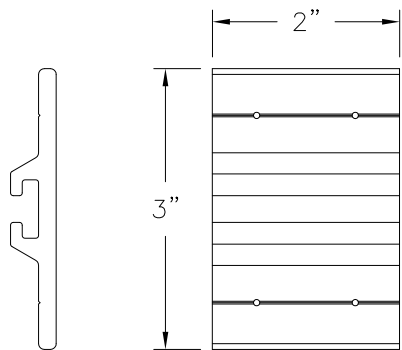
⑦ **STANDARD WALL HINGE**
ALUMINUM 6063-T6 .139" THICK



⑧ **DOUBLE WALL HINGE**
ALUMINUM 6063-T6 .139" THICK



⑨ **BI-FOLD INTERIOR HINGE**
ALUMINUM 6063-T6 .139" THICK



⑩ **F-TRACK**
ALUMINUM 6063-T6 .1875" THICK

LAS ENTERPRISES
2413 L & A ROAD
METAIRIE, LA 70001

COLONIAL SHUTTER
BI-FOLD & STANDARD - LMI & SMI
B.O.M. & COMPONENTS

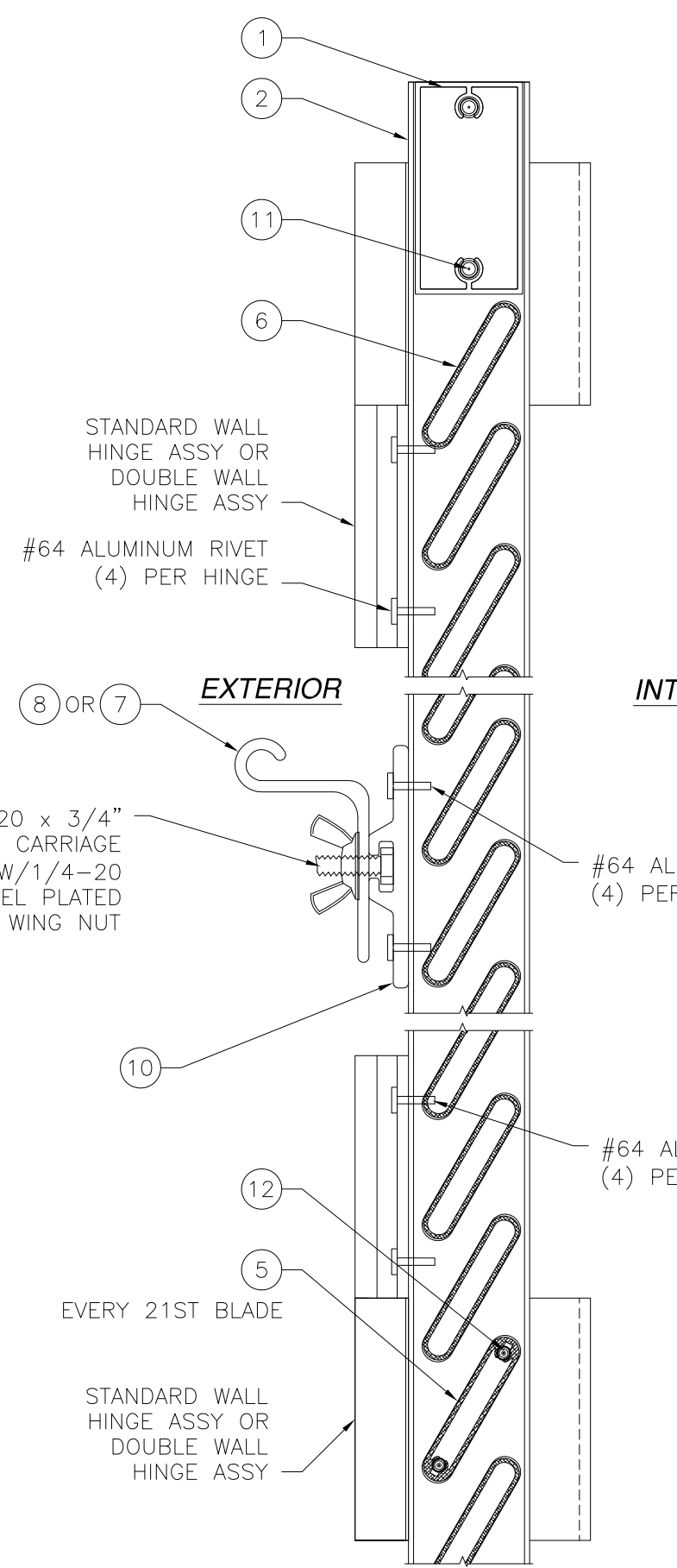
| | | |
|----------------|---------------------|--------------|
| DRAWN: V.L. | DWG NO. 08-02483 | REV - |
| SCALE NTS | DATE 09/08/14 | SHEET 3 OF 7 |

SIGNED: 09/10/2014

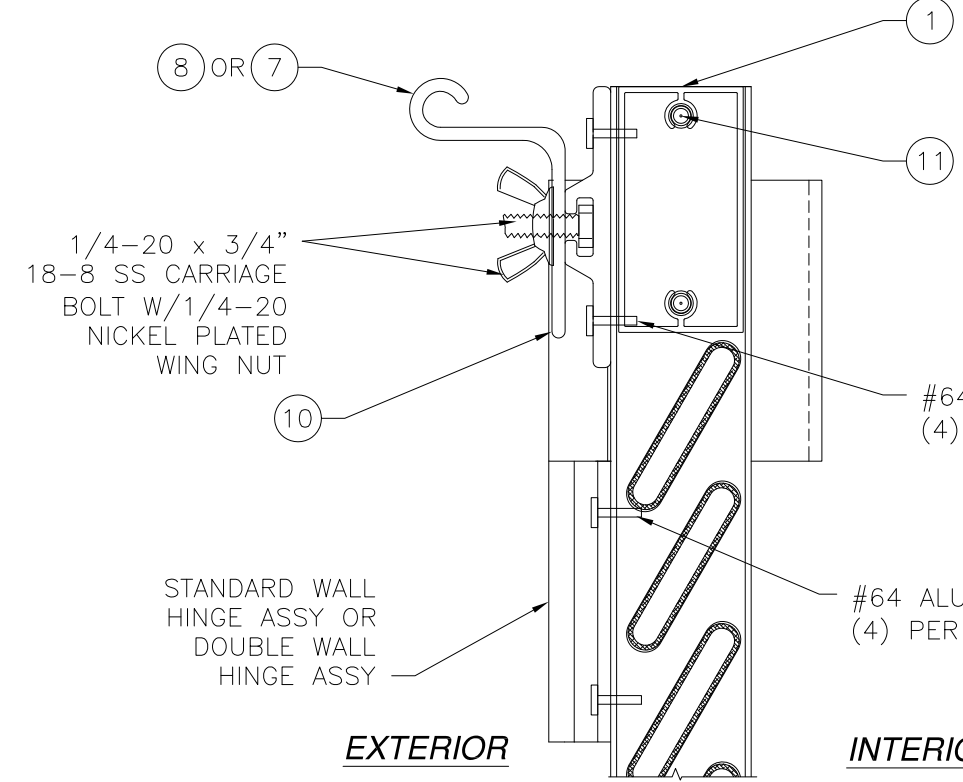


Luis R. Lomas P.E.
TX No.: 101889

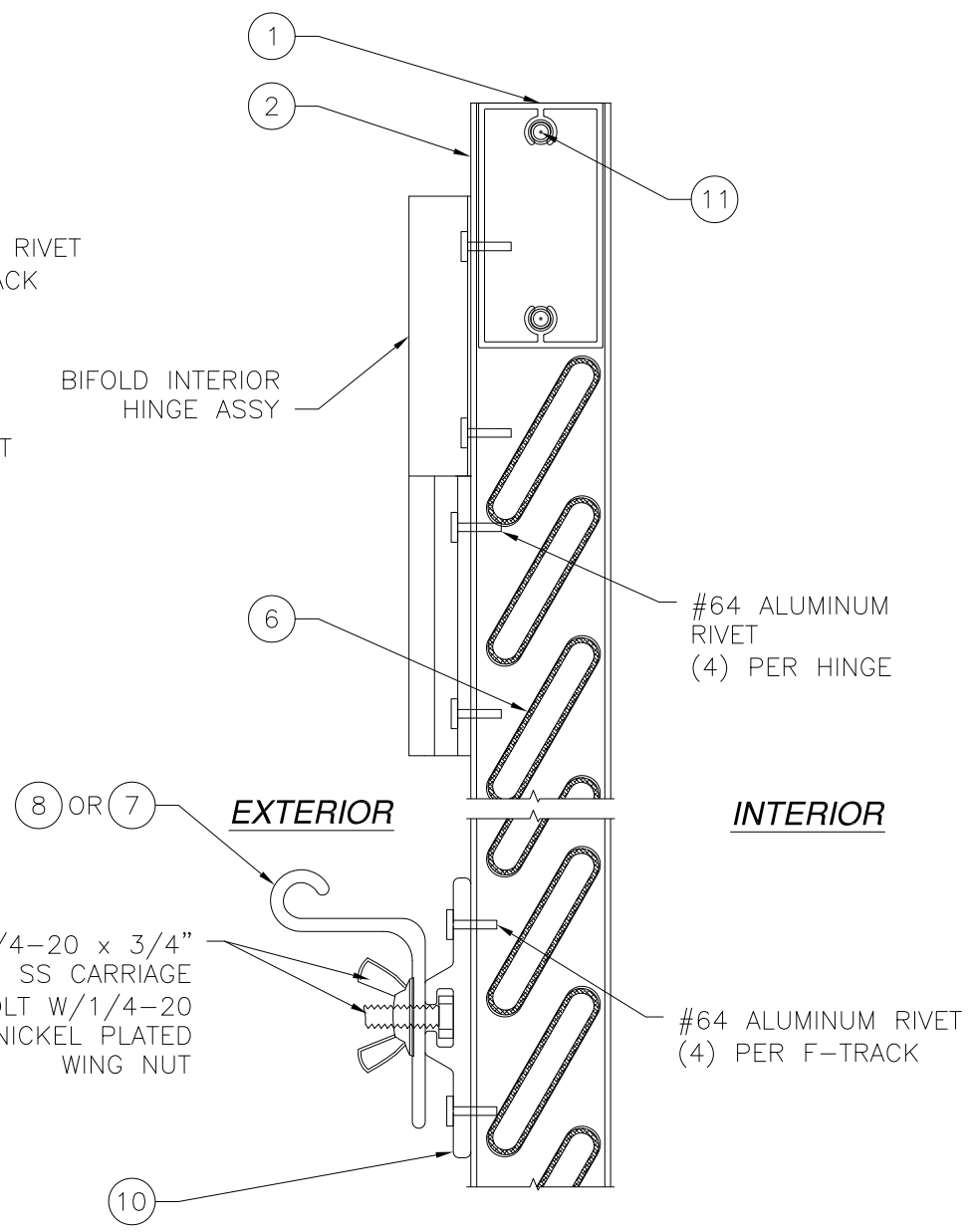
| REVISIONS | | | |
|-----------|-------------|------|----------|
| REV | DESCRIPTION | DATE | APPROVED |
| | | | |



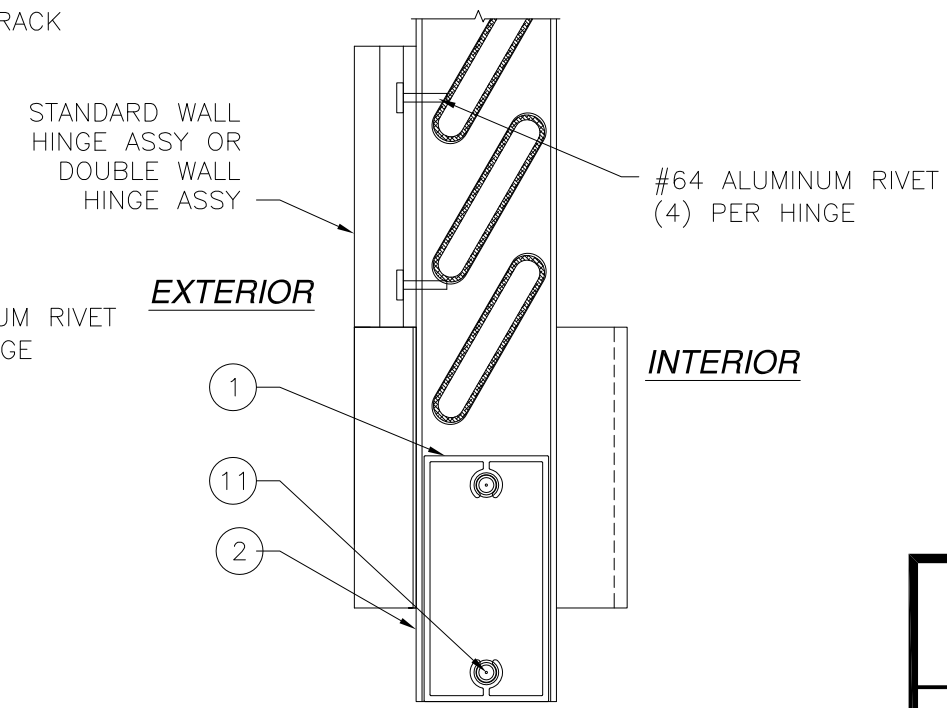
A VERTICAL CROSS SECTION
HEAD BI-FOLD AND STANDARD



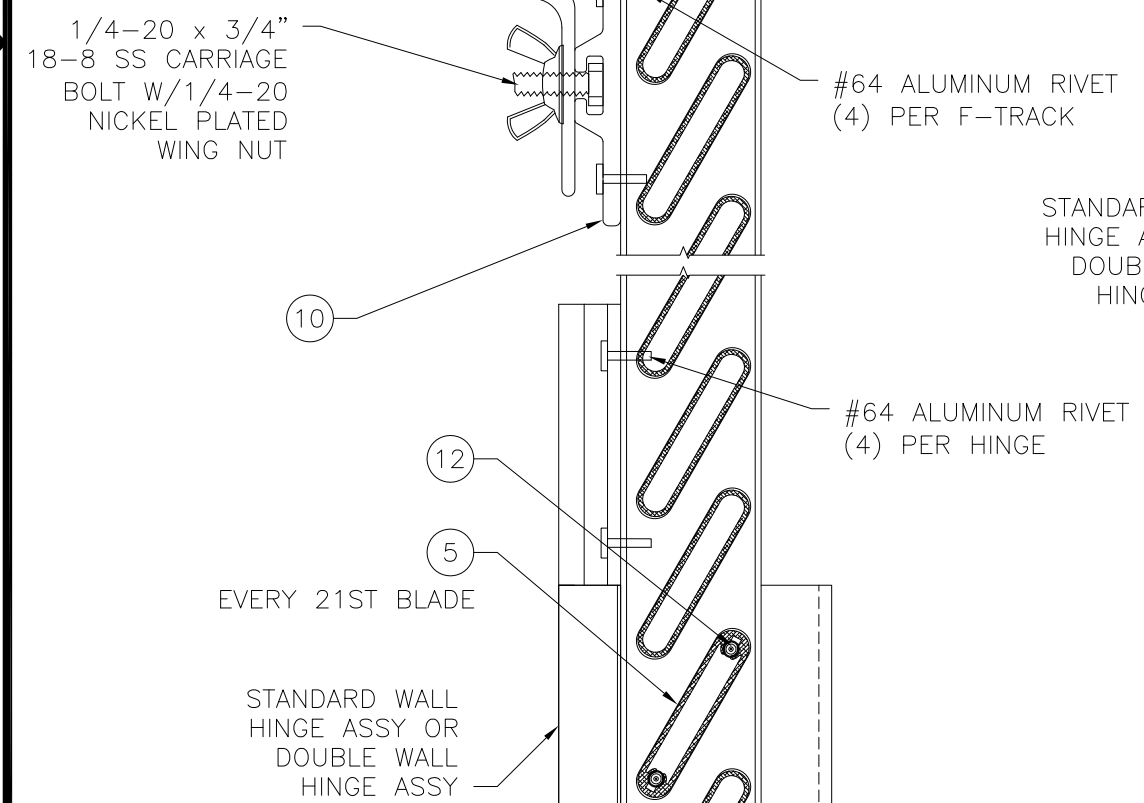
A VERTICAL CROSS SECTION
HEAD BI-FOLD AND STANDARD
WITH OPTIONAL F-TRACK



E VERTICAL CROSS SECTION
HEAD BI-FOLD



B VERTICAL CROSS SECTION
SILL BI-FOLD AND STANDARD



A VERTICAL CROSS SECTION
SILL BI-FOLD AND STANDARD

LAS ENTERPRISES
2413 L & A ROAD
METAIRIE, LA 70001

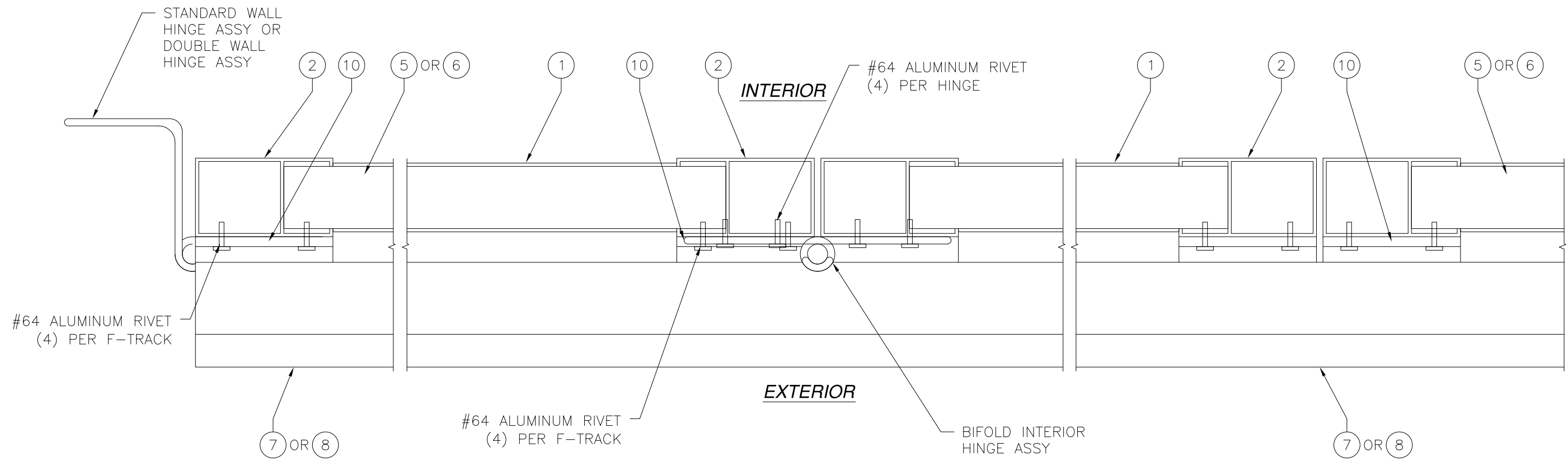
COLONIAL SHUTTER
BI-FOLD & STANDARD - LMI & SMI
VERTICAL CROSS SECTIONS

| | | |
|----------------|---------------------|-----------------|
| DRAWN: V.L. | DWG NO. 08-02483 | REV - |
| SCALE NTS | DATE 09/08/14 | SHEET 4 OF 7 |

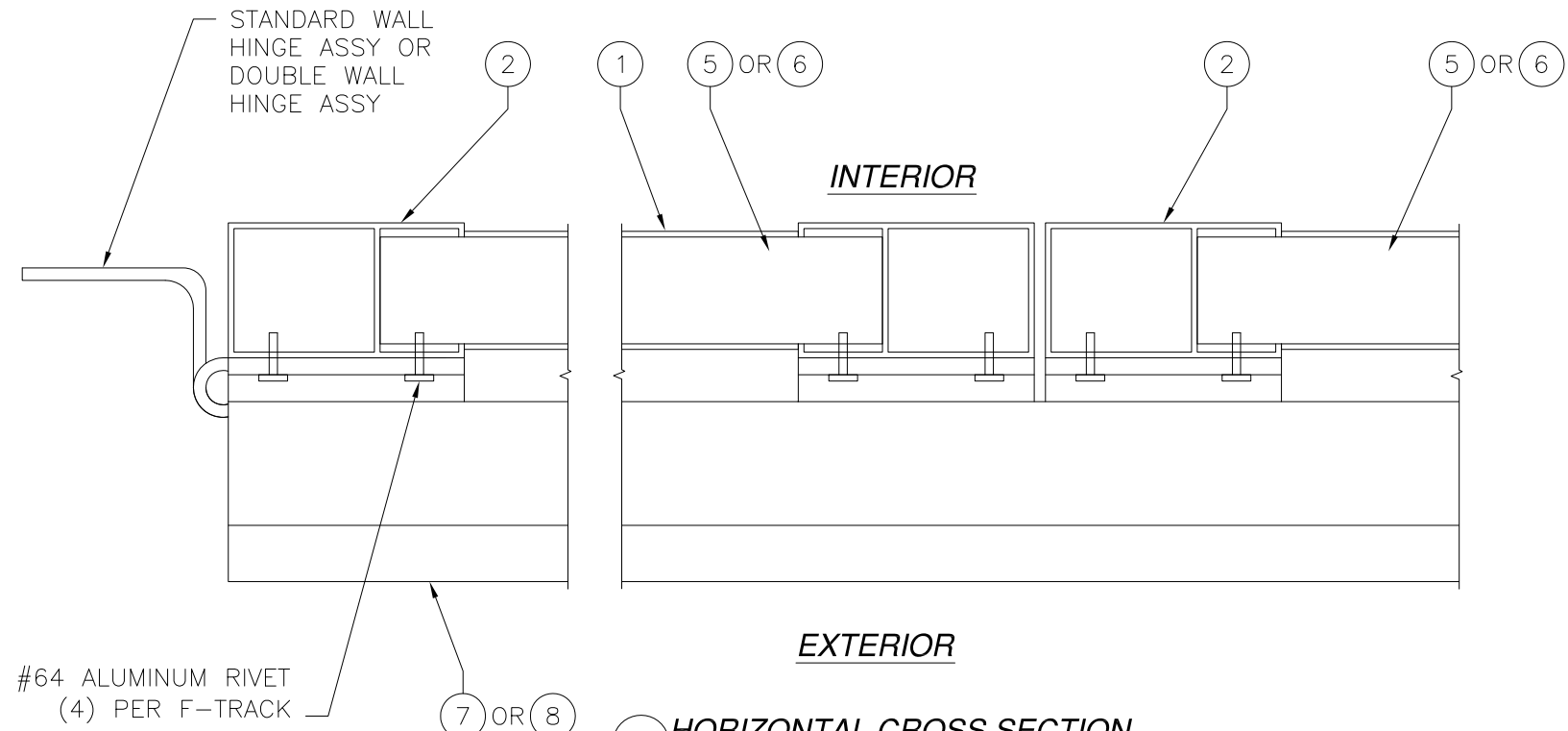
SIGNED: 09/10/2014

Luis R. Lomas P.E.
TX No.: 101889

| REVISIONS | | | |
|-----------|-------------|------|----------|
| REV | DESCRIPTION | DATE | APPROVED |
| | | | |



D HORIZONTAL CROSS SECTION
BI-FOLD SHUTTER



C HORIZONTAL CROSS SECTION
STANDARD SHUTTER

LAS ENTERPRISES
2413 L & A ROAD
METAIRIE, LA 70001

COLONIAL SHUTTER
BI-FOLD & STANDARD - LMI & SMI
HORIZONTAL CROSS SECTIONS

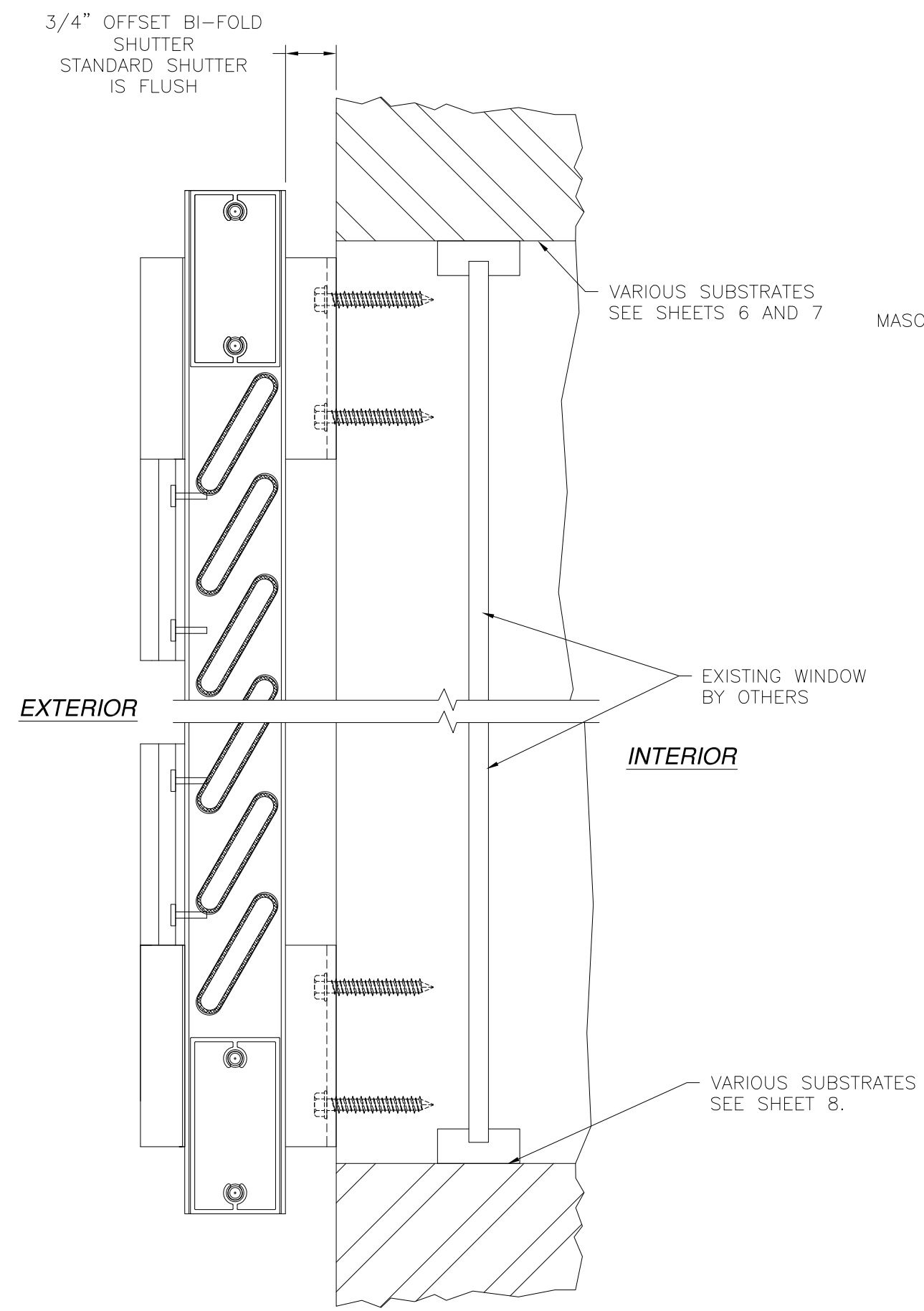
| | | |
|----------------|---------------------|--------------|
| DRAWN: V.L. | DWG NO. 08-02483 | REV - |
| SCALE NTS | DATE 09/08/14 | SHEET 5 OF 7 |

SIGNED: 09/10/2014

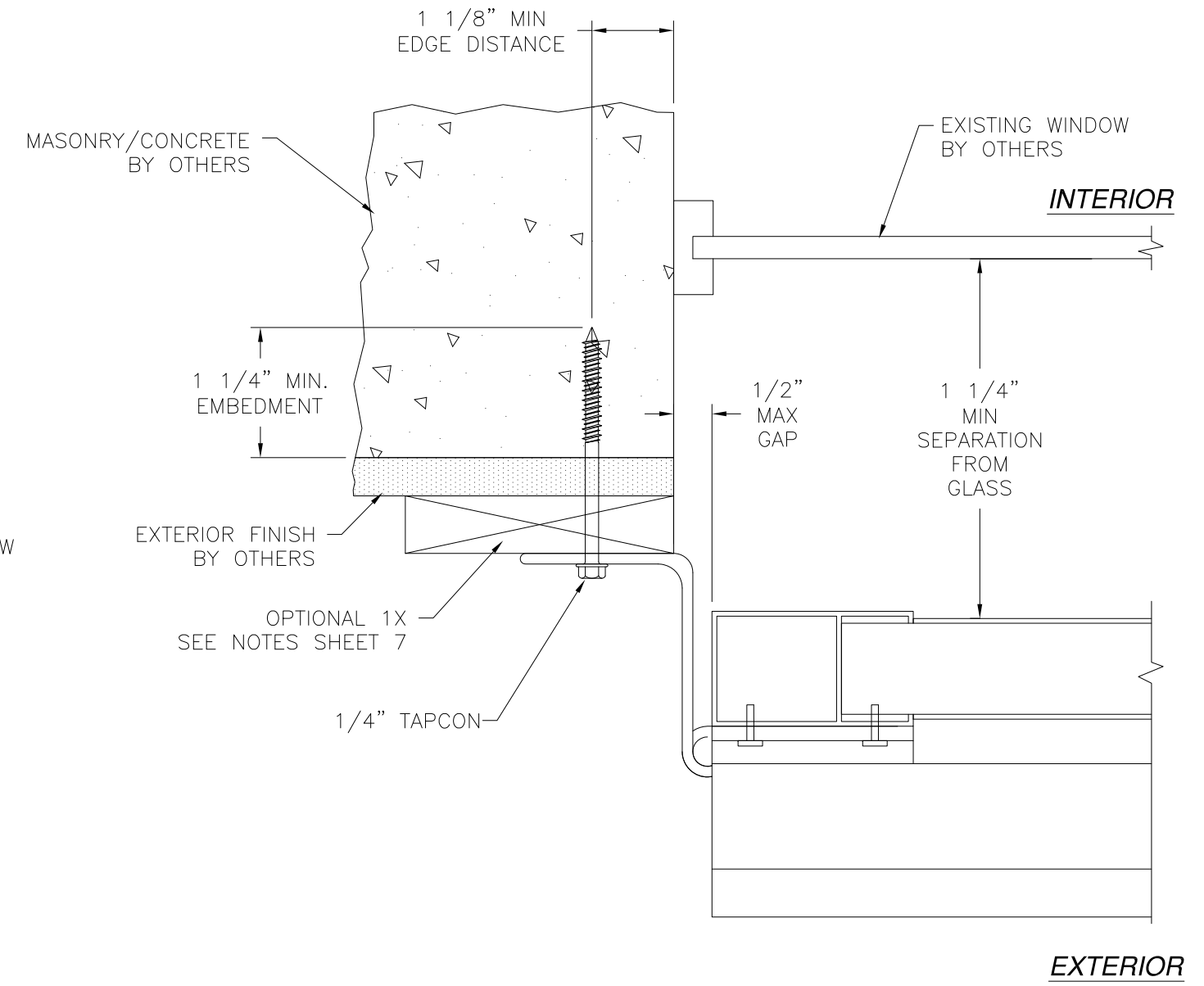


Luis R. Lomas P.E.
TX No.: 101889

| REVISIONS | | | |
|-----------|-------------|------|----------|
| REV | DESCRIPTION | DATE | APPROVED |
| | | | |



VERTICAL CROSS SECTION
 BI-FOLD SHUTTER SHOWN,
 STANDARD SHUTTER SIMILAR



HORIZONTAL CROSS SECTION
 MASONRY/CONCRETE INSTALLATION

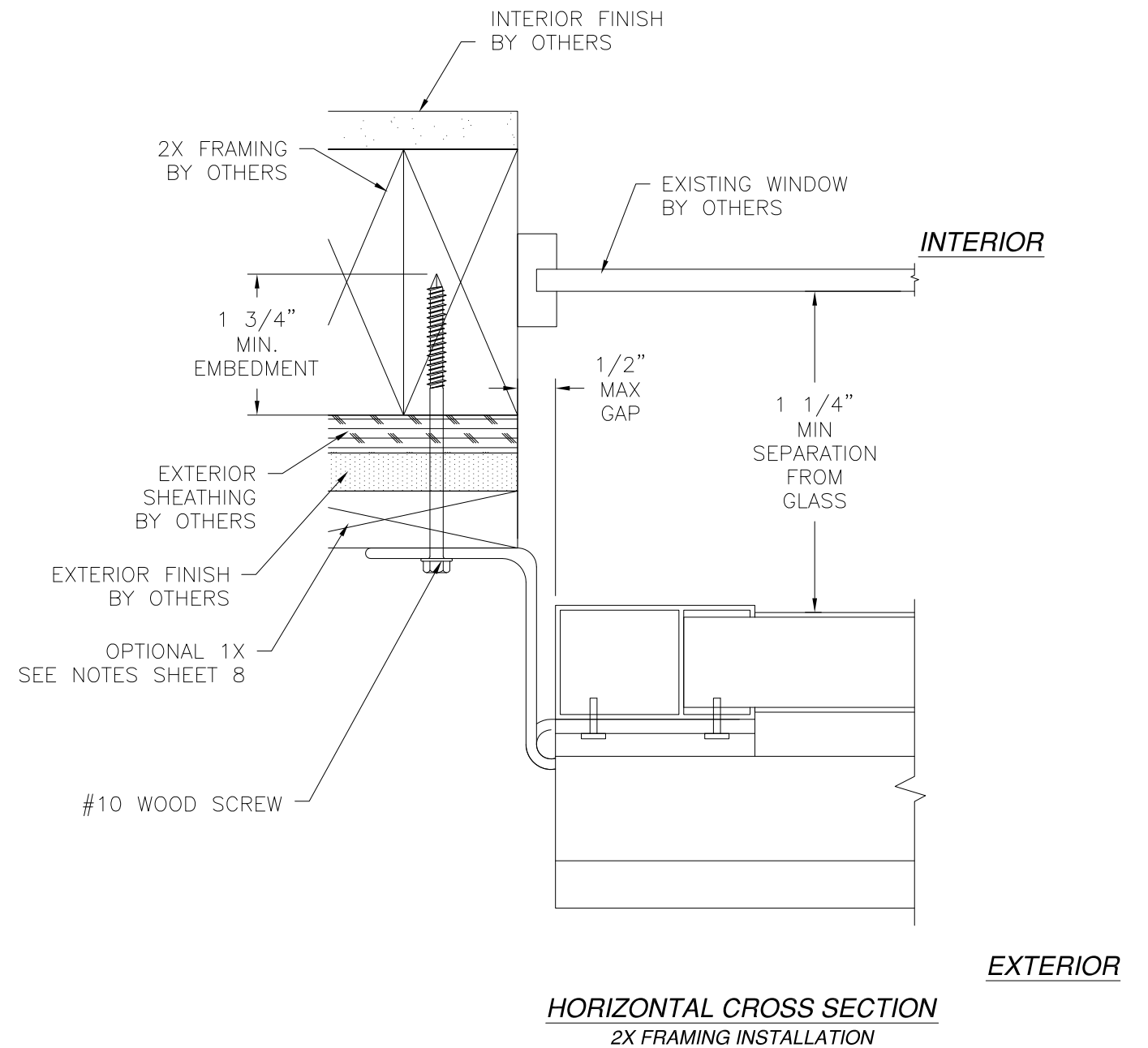
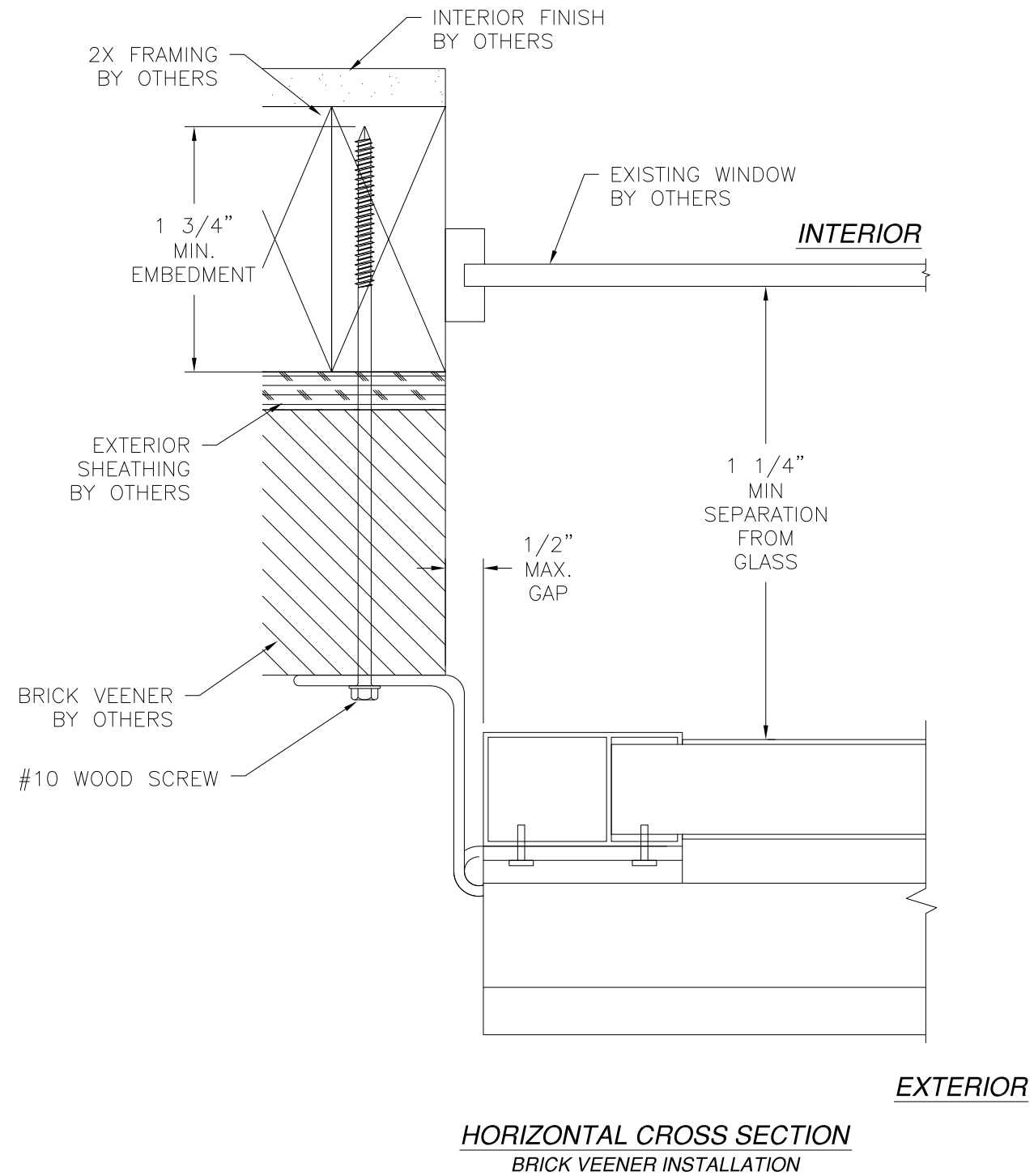
SIGNED: 09/10/2014

| | | |
|--|---------------------|--------------|
| LAS ENTERPRISES 2413 L & A ROAD METAIRIE, LA 70001 | | |
| COLONIAL SHUTTER BI-FOLD & STANDARD - LMI & SMI INSTALLATION DETAILS | | |
| DRAWN: V.L. | DWG NO. 08-02483 | REV - |
| SCALE NTS | DATE 09/08/14 | SHEET 6 OF 7 |



Luis R. Lomas P.E.
 TX No.: 101889

| REVISIONS | | | |
|-----------|-------------|------|----------|
| REV | DESCRIPTION | DATE | APPROVED |
| | | | |



NOTES:

- 1) 1X BUCK TO BE INSTALLED WHEN EXTERIOR FINISH IS NOT ABLE TO WITHSTAND LOAD FROM SHUTTER.
- 2) ANCHOR 1X BUCK TO 2X FRAMING USING #10 WOOD SCREWS WITH SUFFICIENT LENGTH TO ACHIEVE A 1 3/8" MINIMUM EMBEDMENT. LOCATE ANCHORS 4" FROM EACH CORNER AND 16" MAXIMUM O.C. THEREAFTER.
- 3) ANCHOR 1X BUCK TO MASONRY USING 3/16" TAPCONS WITH SUFFICIENT LENGTH TO ACHIEVE A 1 1/4" MINIMUM EMBEDMENT. LOCATE ANCHORS 4" FROM EACH CORNER AND 16" MAXIMUM O.C. THEREAFTER.

SIGNED: 09/10/2014

LAS ENTERPRISES
2413 L & A ROAD
METAIRIE, LA 70001

COLONIAL SHUTTER
BI-FOLD & STANDARD - LMI & SMI
INSTALLATION DETAILS

| | | |
|----------------|---------------------|--------------|
| DRAWN: V.L. | DWG NO. 08-02483 | REV - |
| SCALE NTS | DATE 09/08/14 | SHEET 7 OF 7 |



Luis R. Lomas P.E.
TX No.: 101889