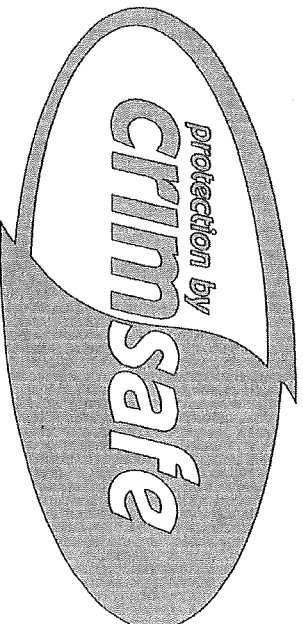


PATIO ENCLOSURE HURRICANE SCREEN

TEXAS DEPARTMENT OF INSURANCE (TDI)

BY

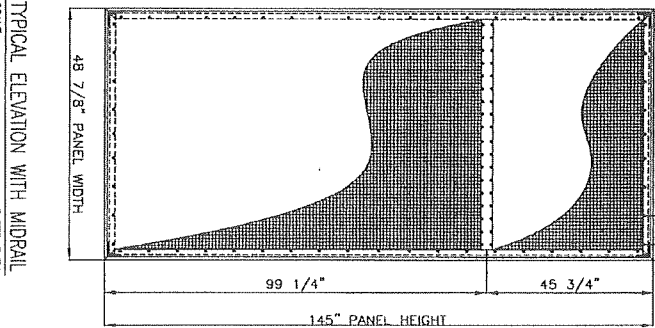
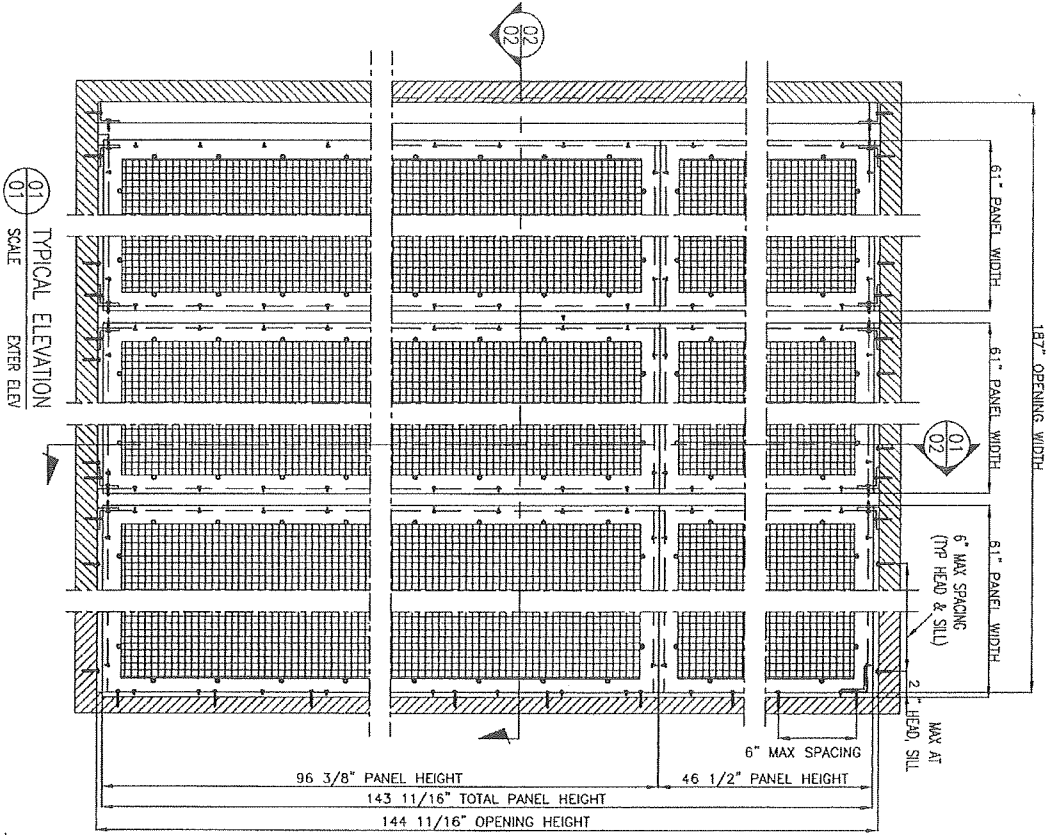


Crimsafe North America LLC
PO Box 2440 Eaton Park
FL 33840-2440
Phone: +1 863 510 0188
Fax: +1 863 665 0485



[Handwritten signature]

PATIO ENCLOSURE HURRICANE SCREEN



SYSTEM NOTES :

1. FRAME & PANEL CONSTRUCTION: EXTRUDED ALUMINUM FRAME CORNERS ARE MITERED, AND SCORED.
2. FRAME DOES NOT CONTAIN ANY HARDWARE.
3. MESH CONSTRUCTION: STAINLESS STEEL GRADE MESH IS MADE UP OF 304 \"HIGH TENSILE\" STAINLESS STEEL, WITH 4 0.035\" STRANDS ARRANGED 10 STRANDS BY 10 STRANDS PER SQUARE INCH. THE MESH INFORMATION IS DESCRIBED IN SHEET 4.
4. THE MESH IS ATTACHED ONTO THE MAIN FRAME BY A REMOVABLE ALUMINUM CLAMP WITH TAMPER RESISTANT SECURITY HEAD SCREW.

GENERAL NOTES :


1. THE WINDOW SCREEN SYSTEM DESCRIBED HEREIN HAS BEEN VERIFIED FOR COMPLIANCE IN ACCORDANCE WITH THE 2006 EDITIONS OF THE INTERNATIONAL BUILDING CODE (I.B.C.) AND THE INTERNATIONAL RESIDENTIAL CODE (I.R.C.) WITH THE 2006 TEXAS REVISION EFFECTIVE JANUARY 1, 2008. TESTING PROTOCOLS WERE IN ACCORDANCE WITH IAS 201, IAS 202, IAS 203.
2. POSITIVE AND NEGATIVE DESIGN PRESSURES SHALL BE CALCULATED IN ACCORDANCE WITH THE GOVERNING CODE.
3. INSTALLATION OF ALL UNITS SHALL ALLOW FOR RESPECTIVE MINIMUM SEPARATION FROM GLAZING AS NOTED ON THIS PAGE. REF. SECTION DETAILS FOR DESCRIPTION OF THIS DISTANCE.
4. THE SYSTEM DETAILED HEREIN IS GENERIC AND DOES NOT PROVIDE INFORMATION FOR A SPECIFIC SITE. FOR SITE CONDITIONS DIFFERENT FROM THE CONDITIONS DETAILED HEREIN, A PROFESSIONAL ENGINEER OR REGISTERED ARCHITECT SHALL PREPARE SITE SPECIFIC DOCUMENTS.
5. PERMIT HOLDER SHALL VERIFY THE ADEQUACY OF THE EXISTING STRUCTURE TO WITHSTAND SUPERIMPOSED LOADS.
6. PERIMETER SQUARE TUBE MAY BE ANCHORED TO VERTICAL FACE(TRACE MOUNT) OF HOST STRUCTURE.
7. SYSTEM MAY BE INSTALLED VERTICALLY OR HORIZONTALLY (AS SHOWN IN THIS PAGE).

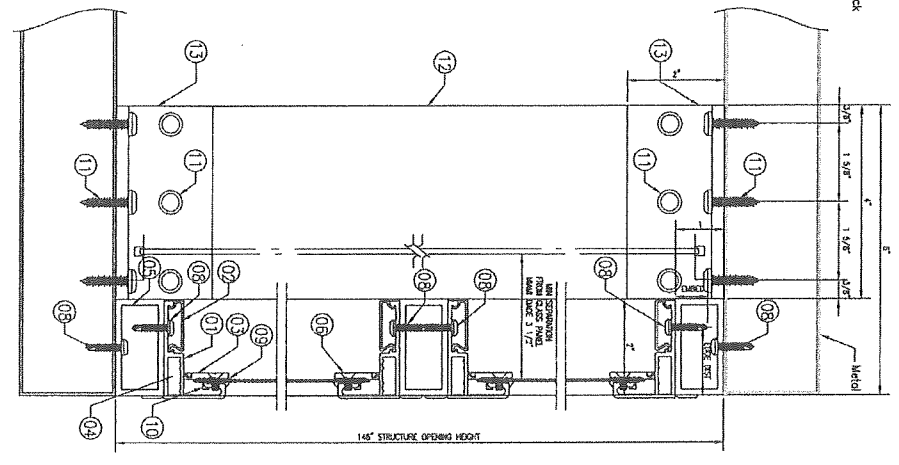
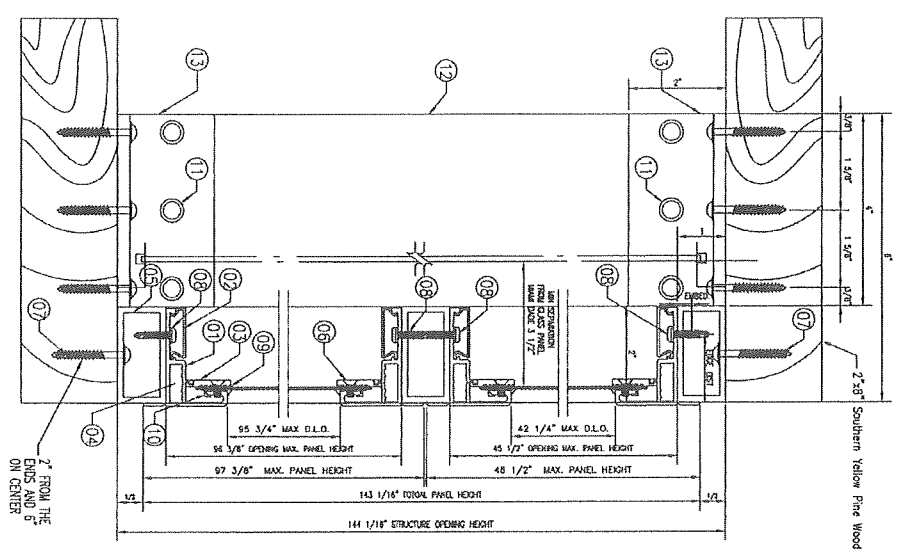
<p>MAXIMUM ALLOWABLE DESIGN PRESSURES:</p> <p>+50.0 PSF -50.0 PSF</p> <p>MIN SEPARATION FROM GLAZING: 3 1/2"</p>

ARCHITECTURAL TESTING INC TEST REPORT NUMBER: 98899.01-401-18

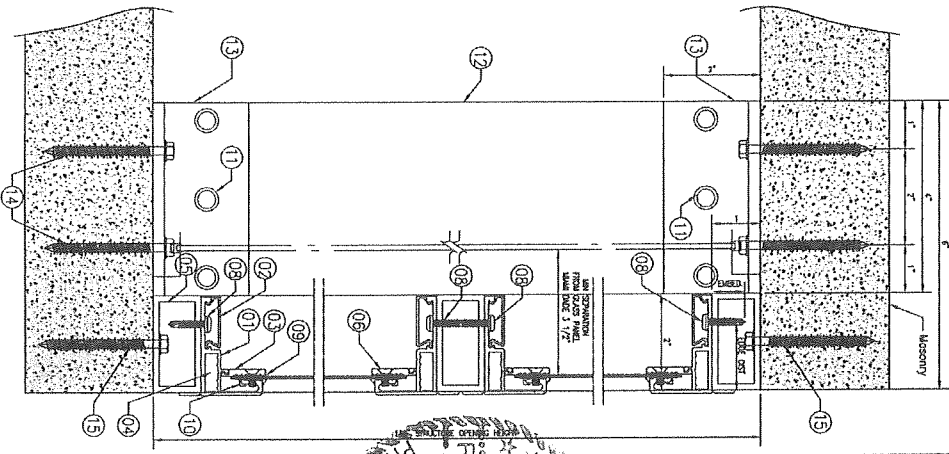
TYPICAL ELEVATION WITH MIDRAIL
SCALE: EXTER. ELEV.

ALL DIMENSION IN INCHES

<p>Manufacturer:</p>  <p>CrimSAFE North America PO Box 2440 Eaton Park FL 33840-2440 Phone: +1 863 510 0188 Fax: +1 863 665 0485</p>	<p>Product:</p> <p>PATIO ENCLOSURE HURRICANE SCREEN</p> <p>ROBERT L CLARK 74072 REGISTERED PROFESSIONAL ENGINEER STATE OF TEXAS 1997/14 1/11/12</p>	<p>Date: 2 Mar 2012 Scale: NA Design by: CRIMSAFE PRODUCT CONTROL DIVISION</p>	<p>Drawing Number MD-101-POE Sheet 1 of 4</p>
---	---	--	---



ATTACHMENT TO ALUMINUM
OR STEEL




ATTACHMENT TO HOLLOW
BLOCK OR CONCRETE

ANCHOR TABLE:

TYPE	STRUCTURE	MIN. EMBD.
3/16"	CONCRETE OR SOLID BLOCK WITH MIN. 2" EMB. DISTANCE 7" MIN. SPACING TO 6"	1 3/8"
#10 SELF DRILLING METAL SHEET SCREWS	ALUMINUM OR STEEL TRIMMING WITH MIN. 2" EMB. DISTANCE 1/2" MIN. SPACING TO 6"	1/8"
#10	WOOD /TRIM WITH MIN. 2" EMB. DISTANCE 1/2" MIN. SPACING TO 6"	1 3/8"

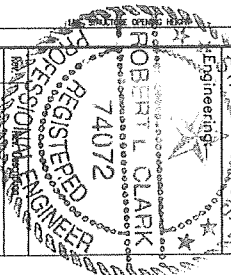
- 01 VERTICAL CROSS SECTION
- 02 SIDE FIX HURRICANE WINDOW

ALL DIMENSION IN INCHES

Manufacturer:

 Crimsafe North America
 PO Box 2440 Eaton Park
 FL 33840-2440
 Phone: +1 883 510 0188
 Fax: +1 883 885 0485

Product:

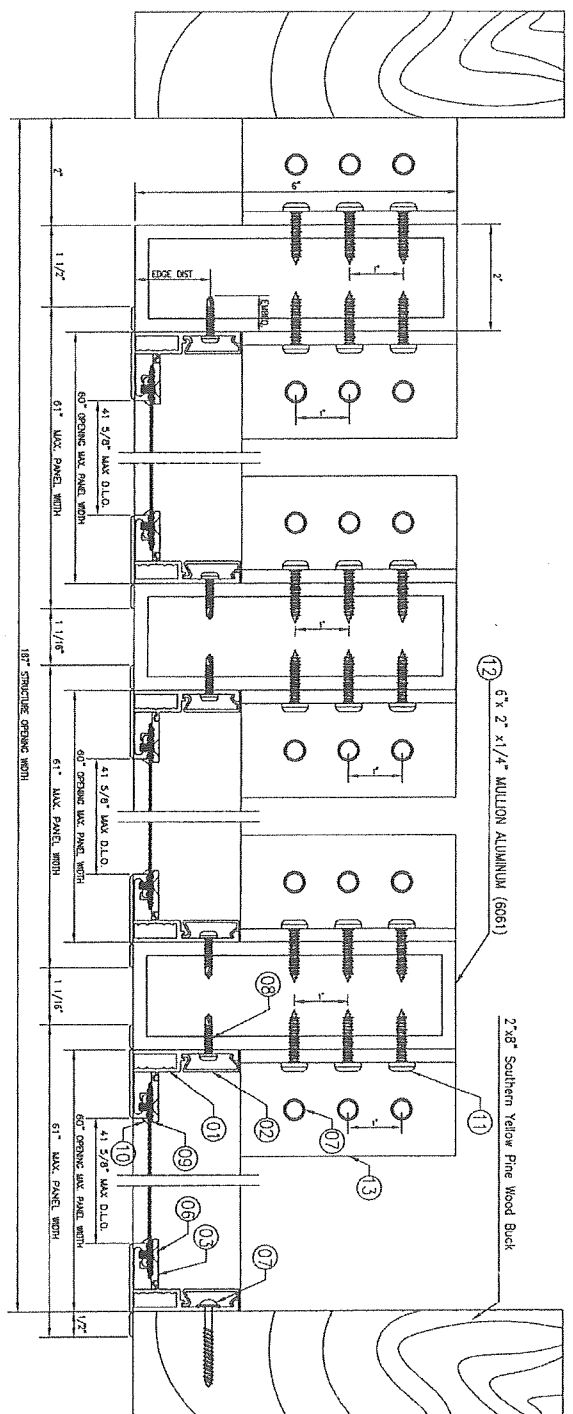
PATIO ENCLOSURE
 HURRICANE SCREEN



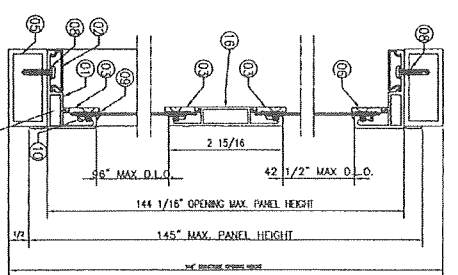
Date: 2 Mar 2012
 Scale: NA
 Design by: CRIMS SAFE
 PRODUCT CONTROL DIVISION

Drawing Number
 MD-101-POE

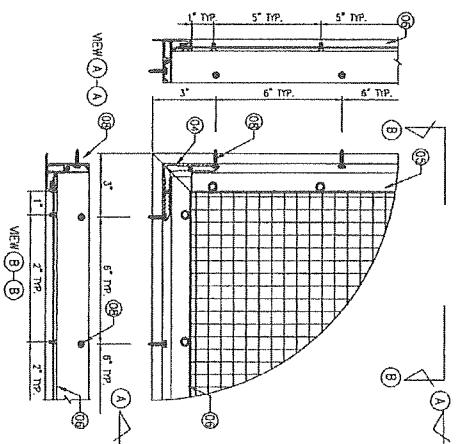
Sheet
 2 of 4



02 HORIZONTAL CROSS SECTION
02 SIDE FIX HURRICANE WINDOW



MIDRAIL SECTION DETAILS



CORNER CONSTRUCTION DETAIL
ELEVATION

ANCHOR TABLE:

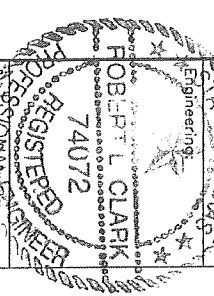
TYPE	STRUCTURE	MIN EMBD.
3/16"	CONCRETE OR HOLLOW BLOCK WITH MIN EDGE DISTANCE 2" WITH SCREEN SPACING OF 6"	1 3/8"
#10 SELF TAPPING STEEL SHEET	ALUMINUM OR STEEL FINISH WITH MIN EDGE DISTANCE 1/2" WITH SCREEN SPACING OF 6"	1/8"
#10	WOOD /MASONRY WITH MIN EDGE DISTANCE 1/2" WITH SCREEN SPACING OF 6"	1 3/8"

ALL DIMENSION IN INCHES

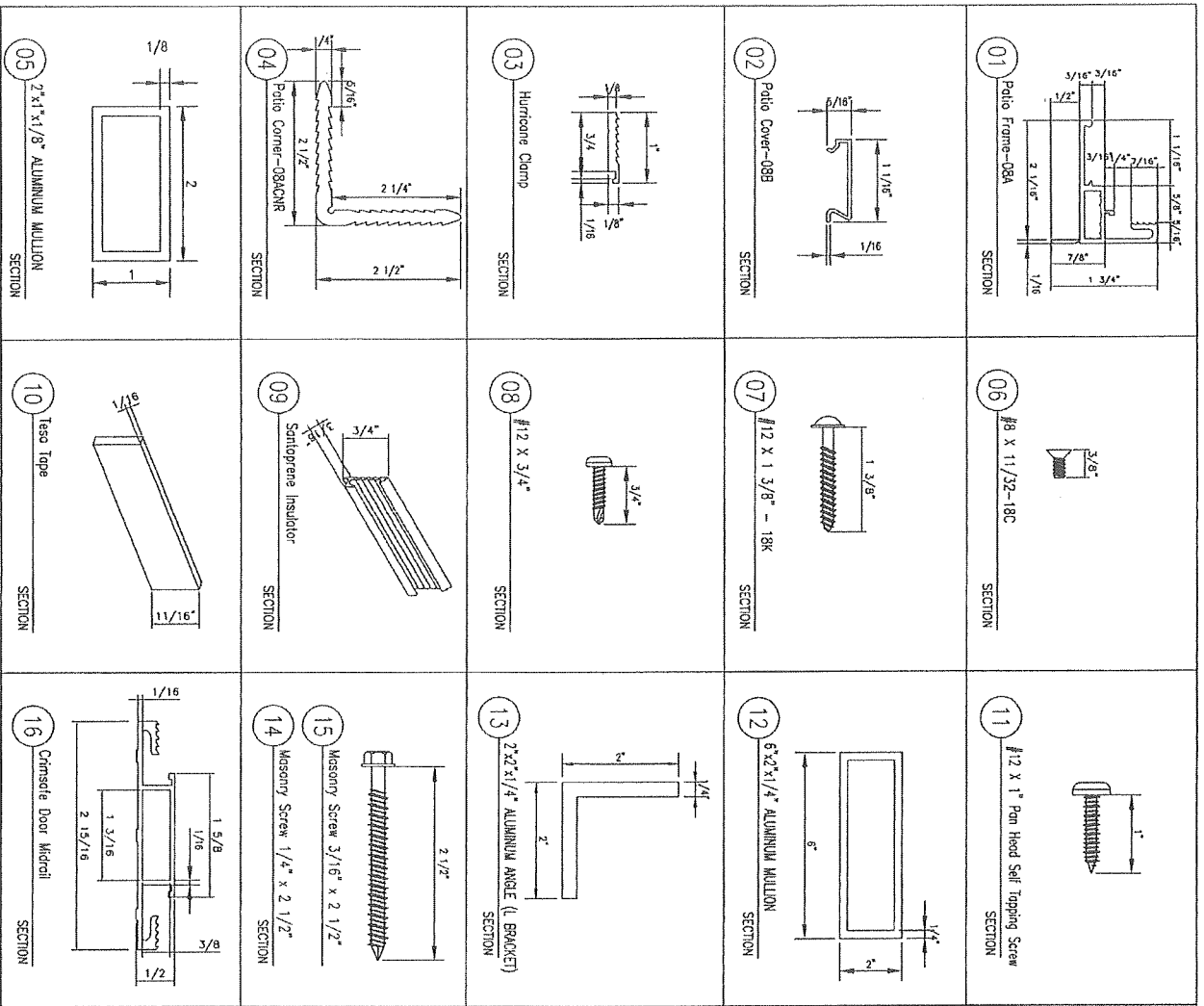


Manufacturer:
Crimsafe North America
PO Box 2440 Eaton Park
FL 33840-2440
Phone: +1 863 510 0188
Fax: +1 863 665 0485

Product:
PATIO ENCLOSURE
HURRICANE SCREEN



Date: 2 Mar 2012
Scale: NA
Design by: CRIMSAFE
Product CONTROL DIVISION
Drawing Number MD-101-POE
Sheet 3 of 4



BILL OF MATERIAL			
ITEM	DESCRIPTION	MATERIAL	QTY
01	Patio Frame-084	6063-T5	24
02	Patio Cover-088	6063-T5	24
03	Hurricane Clamp	6063-T5	24
04	Patio Corner-084CNR	6063-T5	24
05	2" x 1 1/8" ALUMINUM MULLION	6061	9
06	#8 x 1 1/32-18C	STAINLESS STEEL	240
07	#12 x 1 3/8" Timber Screws 18K	STAINLESS STEEL	81
08	#12 x 3/4"	STAINLESS STEEL	240
09	Santoprene Insulator	Santoprene	24
10	Tesa Tape	-	24
11	#12 x 1" Pan Head Self Tapping Screw	STAINLESS STEEL	36
12	6" x 2" x 1/4" ALUMINUM MULLION	6061	3
13	2" x 2" x 1/4" ALUMINUM ANGLE (L BRACKET)	6061	12
14	Masonry Screw 3/16" x 2 1/2"	STAINLESS STEEL	36
15	Masonry Screw 1/4" x 2 1/2"	STAINLESS STEEL	36
16	Crimsafe Door Microfil	6061	1

ANCHOR NOTES:

1. ANCHOR NOTES SHALL BE AS LISTED IN APPROPRIATE ANCHOR SCHEDULE AND SPACED EVEN ON SPACED 1' DISTANCES.
2. ANCHORS SHALL BE INSTALLED IN ACCORDANCE WITH MANUFACTURER'S RECOMMENDATIONS. MINIMUM EMBEDMENT DEPTH AND EDGE DISTANCES SHALL APPLY AS NOTED IN APPROPRIATE ANCHOR SCHEDULE.
3. STEEL MAY BE INSTALLED TO CONCRETE, HOLLOW BLOCK, WOOD, STEEL, OR AN APPROVED LIGHT RESISTIVE ALUMINUM FRAME OR ALUM 6061-T5 (W/1). FRAME SHALL BE INSTALLED PER RESPECTIVE APPROVAL DOCUMENTATION.
4. THESE ANCHOR SCHEDULES IS WOOD FRAMING. DO NOT CHANGE LUMBER TYPE, SIZE, OR SPACING THAT EXCEEDS THE MINIMUM REQUIREMENTS. WOOD FRAMING LEADERS NOT ROUNDED.
5. WHERE WOOD SCREWS FACTORY TO WOODEN FACE OF STUD FRAMING, FASTENERS SHALL BE LOCATED IN CENTER OF NOMINAL (W/1) WOOD STUD (1/8" MIN. EDGE DISTANCE IS ACCEPTABLE FOR WOOD FRAMING), AND SHALL PENETRATE 1 1/2" MIN WOOD STUD SHALL BE SMOOTH RITE GLEAS OR GREASER DESIGN. WOOD SCREWS SHALL HAVE PHILIPS PAN HEAD OR HEX HEAD.
6. MINIMAL EMBEDMENT AND EDGE DISTANCE EXCLUDES STUDS, POLE, BLOCK, AND OTHER WALL FINISHES.
7. ALL SCREWS IN ALUMINUM SHALL BE INSTALLED WITH FULL THREAD PROTECTION AND MINIMUM 60° EDGE DISTANCE TO APPROVED 6061-T5 (W/1) ALUMINUM FRAME (0.125" MIN THICKNESS).

$\phi = 0.035"$

WEFT = 10 STRANDS FOR 1"
WARP = 10 STRANDS FOR 1"
SCREEN INFORMATION
ALL DIMENSION IN INCHES



Manufacturer:
Crimsafe North America
PO Box 2440 Eaton Park
FL 33584-02440
Phone: +1 863 510 0188
Fax: +1 863 665 0485

Product:
PATIO ENCLOSURE
ALUMINUM SCREEN

REGISTERED PROFESSIONAL ENGINEER
STATE OF FLORIDA
ROBERT L. CLARK
74072

Date: 2 Mar 2012
Scale: NA
Design by: CRIMS SAFE
PRODUCT CONTROL DIVISION

Sheet
4 of 4

Drawing Number
MD-101-POE