

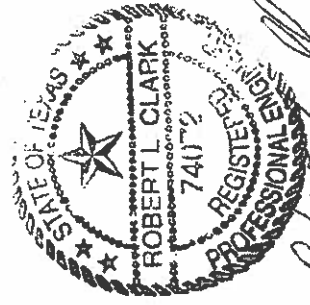
BUILD OUT WINDOW HURRICANE SCREEN

TEXAS DEPARTMENT OF INSURANCE (TDI)

BY



Crimsafe North America
PO Box 2440 Eaton Park
FL 33840-2440
Phone: +1 863 510 0188
Fax: +1 863 665 0485



Robert L. Clark
7/1/04

BUILD-OUT WINDOW HURRICANE SCREEN

MAXIMUM ALLOWABLE DESIGN PRESSURES:

+75.0 PSF

-75.0 PSF

MIN. SEPARATION FROM GLAZING:

3"

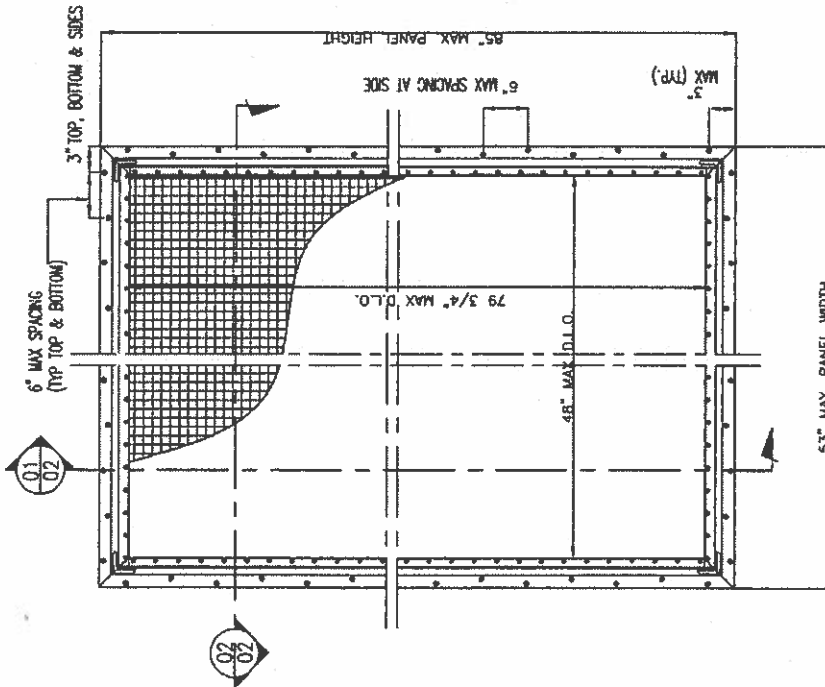
GENERAL NOTES :

1. THE WINDOW SCREEN SYSTEM DESCRIBED HEREIN HAS BEEN VERIFIED FOR COMPLIANCE IN ACCORDANCE WITH THE 2006 EDITIONS OF THE INTERNATIONAL BUILDING CODE (I.B.C.) AND THE INTERNATIONAL RESIDENTIAL CODE (I.R.C.) WITH THE 2006 TEXAS REVISION EFFECTIVE JANUARY 1, 2008. TESTING PROTOCOLS WERE IN ACCORDANCE WITH TAS 201, TAS 202, TAS 203.

2. POSITIVE AND NEGATIVE DESIGN PRESSURES SHALL BE CALCULATED IN ACCORDANCE WITH THE GOVERNING CODE.
3. INSTALLATION OF ALL UNITS SHALL ALLOW FOR RESPECTIVE MINIMUM SEPARATION FROM GLAZING AS NOTED ON THIS PAGE. REF SECTION DETAILS FOR DESCRIPTION OF THIS DISTANCE.

4. THE SYSTEM DETAILED HEREIN IS GENERIC AND DOES NOT PROVIDE INFORMATION FOR A SPECIFIC SITE. FOR SITE CONDITIONS DIFFERENT FROM THE CONDITIONS DETAILED HEREIN, A PROFESSIONAL ENGINEER OR REGISTERED ARCHITECT SHALL PREPARE SITE SPECIFIC DOCUMENTS.

5. PERMIT HOLDER SHALL VERIFY THE ADEQUACY OF THE EXISTING STRUCTURE TO WITHSTAND SUPERIMPOSED LOADS.



(01/01) TYPICAL ELEVATION
SCALE EXTER ELEV

ALL DIMENSION IN INCHES

6. PERIMETER SQUARE TUBE MAY BE ANCHORED TO VERTICAL FACE(FACE MOUNT*) OF HOST STRUCTURE.
7. SYSTEM MAY BE INSTALLED VERTICALLY OR HORIZONTALLY (AS SHOWN IN THIS PAGE).

SYSTEM NOTES :

1. FRAME & PANEL CONSTRUCTION: EXTRUDED ALUMINUM FRAME CORNERS ARE MITERED, AND SCREWED.
2. FRAME DOES NOT CONTAIN ANY HARDWARE.
3. MESH CONSTRUCTION: STAINLESS STEEL GRADE MESH IS MADE UP OF 304 "HIGH TENSILE" STAINLESS STEEL, WITH # 0.035" STRANDS ARRANGED 10 STRANDS BY 9.5 STRANDS PER SQUARE INCH THE MESH INFORMATION IS DESCRIBED IN SHEET 4.
4. THE MESH IS ATTACHED ONTO THE MAIN FRAME BY A REMOVABLE ALUMINUM CLAMP WITH HAMPER RESISTANT SECURITY HEAD SCREEN.



Manufacturer:



Crimsafe North America
PO Box 2440 Eaton Park
FL 33840-2440
Phone: +1 863 510 0188
Fax: +1 863 865 0485

Product:

BUILD OUT WINDOW HURRICANE SCREEN

Engineering:

Rev. Description

Date: 12 May 2010
Scale: NA
Design by: CRIMS SAFE

PRODUCT CONTROL DIVISION

Drawing Number
MD-500-BOW

Sheet
1 of 4

Manufacturer:



Crimsafe North America
 PO Box 2440 Eaton Park
 FL 33840-2440
 Phone: +1 863 510 0188
 Fax: +1 863 665 0485

Product:

**BUILD OUT WINDOW
 HURRICANE SCREEN**

Engineering:

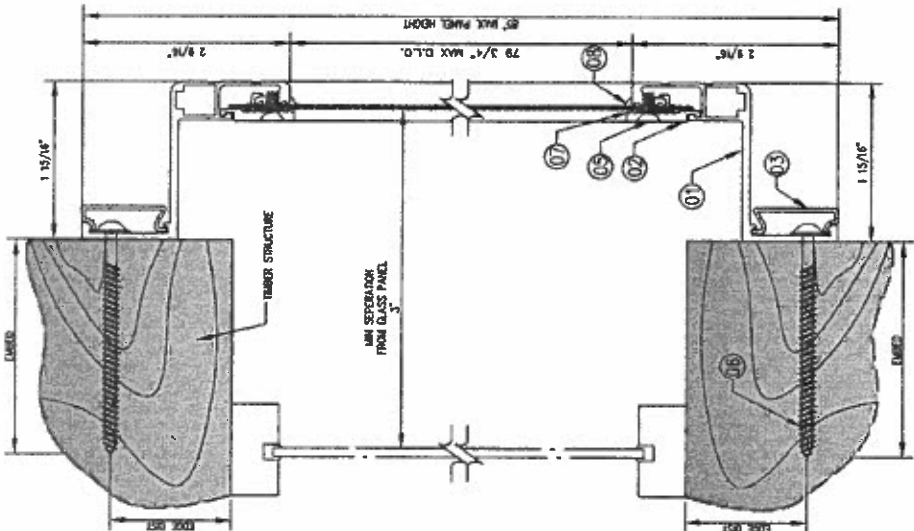
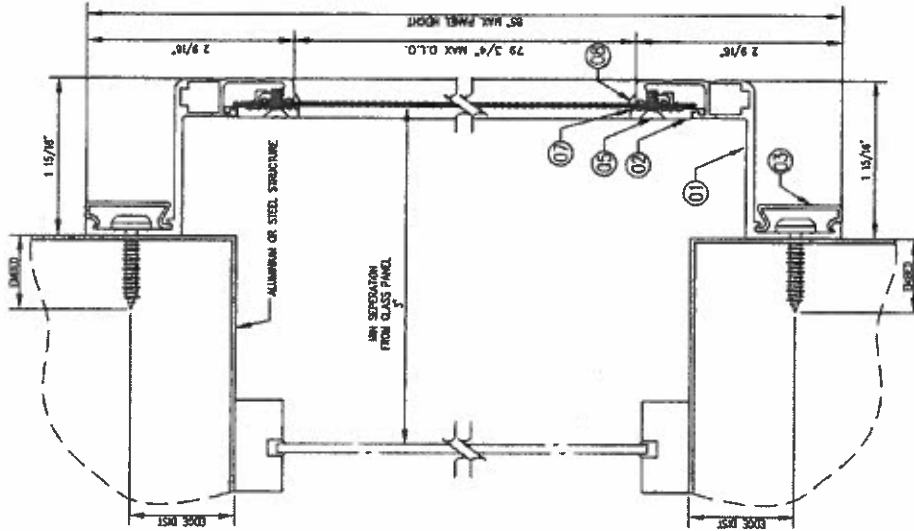
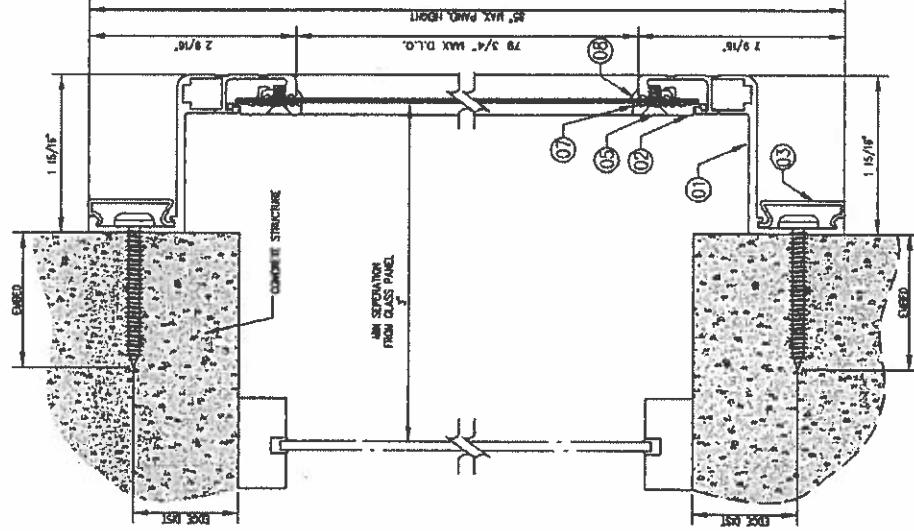
Rev. Description

Date: 12 May 2010
 Scale: NA
 Design by: CRIMSsafe

PRODUCT CONTROL DIVISION

Drawing Number
 MD-500-BOW

Sheet
 2 of 4



ATTACHMENT TO WOOD

ATTACHMENT TO ALUMINUM OR STEEL

ATTACHMENT TO CONCRETE

ANCHOR TABLE:

TYPE	STRUCTURE	MIN. EMBD.
1/4" X 2 1/4" TAPCONS	CONCRETE OR HOLLOW BLOCK WITH MIN. EDGE DISTANCE 1 3/16". MIN. SOCKET SPACING OF 6"	1 3/8"
#12 S&W DRILLING Steel Weld Screws	ALUMINUM OR STEEL FRAMING WITH MIN. WALL THICKNESS OF 1/4" AND EDGE DISTANCE 1 3/16". MIN. SOCKET SPACING OF 6"	3/4"
#10 X 2 3/4"	WOOD FRAMING WITH MIN. EDGE DISTANCE 1 3/16". MIN. SOCKET SPACING OF 6"	1 3/8"

01 VERTICAL CROSS SECTION
02 SIDE FIX HURRICANE WINDOW



Installation shown is for wood frame, concrete, CMU, aluminum and steel tubes as similar.

ALL DIMENSION IN INCHES

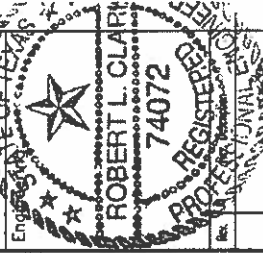
Manufacturer:



Crimsafe North America
 PO Box 2440 Eaton Park
 FL 33840-2440
 Phone: +1 863 510 0188
 Fax: +1 863 665 0485

Product:

**BUILD OUT WINDOW
 HURRICANE SCREEN**

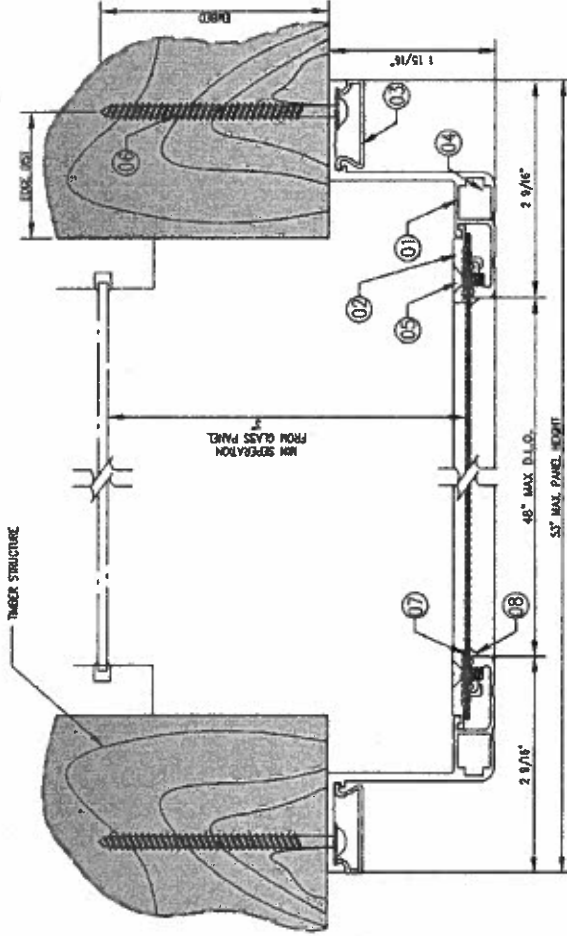


Date: 12 May 2010
 Scale: NA
 Design by: CRIMS SAFE

PRODUCT CONTROL DIVISION

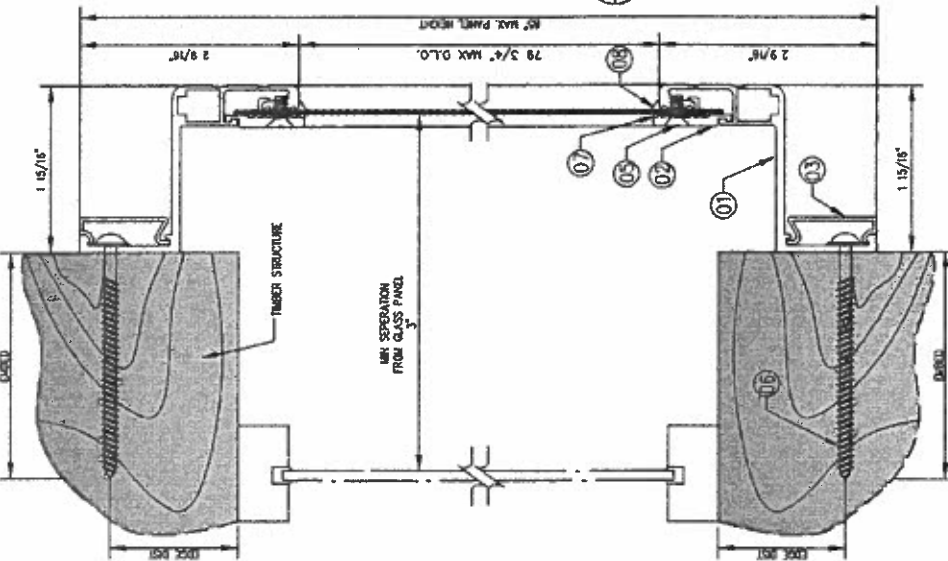
Drawing Number
 MD-500--BOW

Sheet
 3 of 4



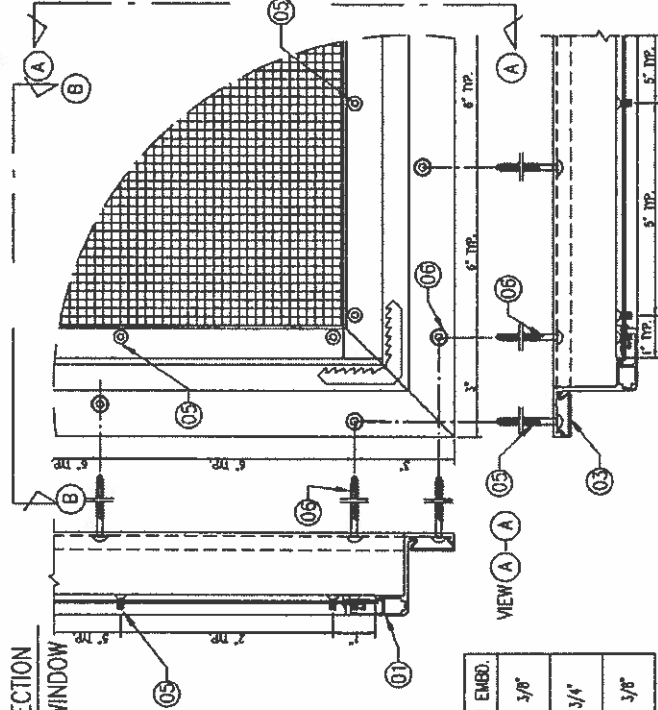
01 HORIZONTAL CROSS SECTION

02 SIDE FIX HURRICANE WINDOW



01 VERTICAL CROSS SECTION

02 SIDE FIX HURRICANE WINDOW



VIEW (B)-(B) ALL DIMENSION IN INCHES

ANCHOR TABLE:

TYPE	STRUCTURE	MIN. EMBD.
1/4" X 2 1/4" HIPSONS	CONCRETE OR HOLLOW BLOCK WITH MIN. EDGE DISTANCE 1 5/16". WITH SCREEN SPACING OF 6"	1 3/8"
#12 Gal. Inching Steel Weld Screen	ALUMINUM OR STEEL FRAMING WITH MIN. WALL THICKNESS OF 1/4" AND EDGE DISTANCE 1 5/16". WITH SCREEN SPACING OF 6"	3/4"
#10 X 2 3/4"	WOOD / FIBER WITH MIN. EDGE DISTANCE 1 5/16". WITH SCREEN SPACING OF 6"	1 3/8"

Installation shown is for wood frame, concrete, CMU, aluminum and steel tubes as similar.

Manufacturer:



Crimsafe North America
PO Box 2440 Eaton Park
FL 33840-2440
Phone: +1 863 510 0188
Fax: +1 863 665 0485

Product:

**BUILD OUT WINDOW
HURRICANE SCREEN**

Engineering:

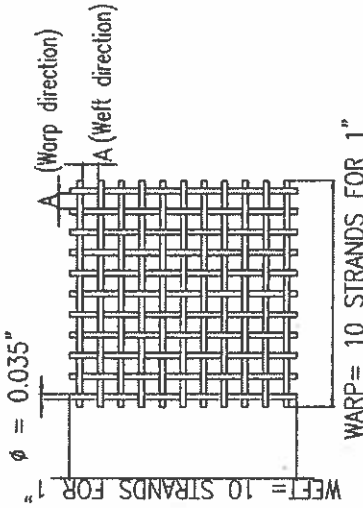
Rev. Description

Date: 12 May 2010
Scale: NA
Design by: CRIMSsafe

PRODUCT CONTROL DIVISION

Drawing Number
MD-500--BOW

Sheet
4 of 4



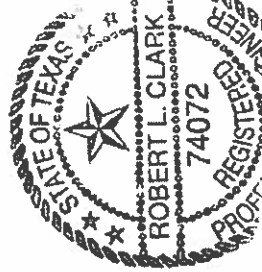
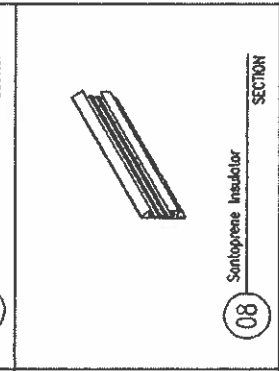
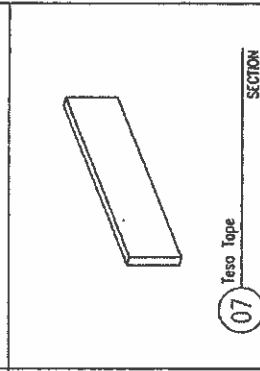
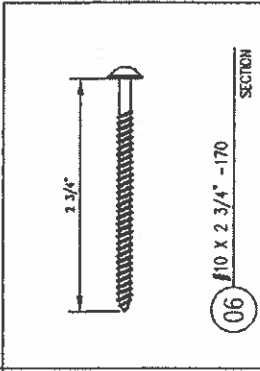
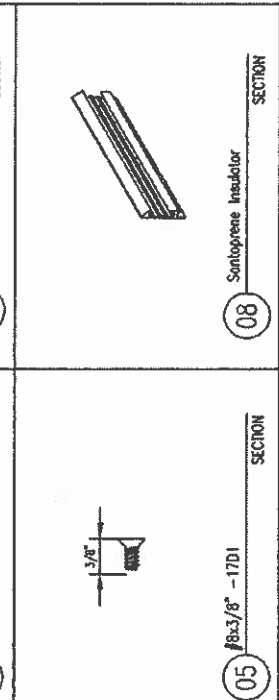
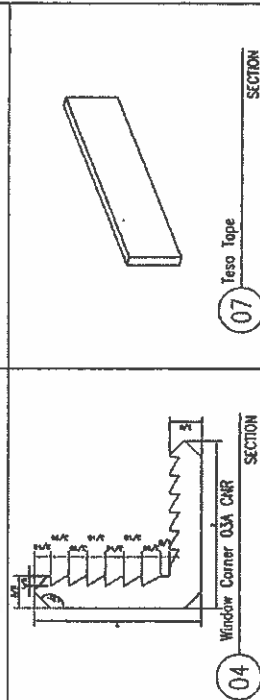
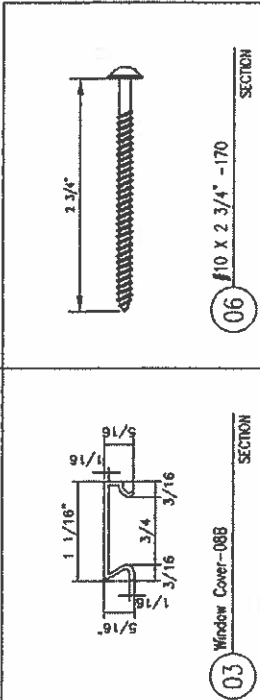
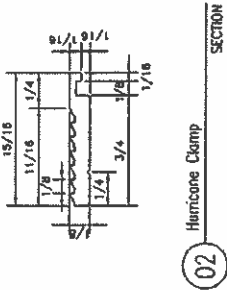
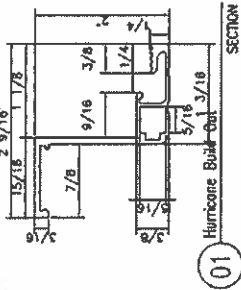
SCREEN INFORMATION

ANCHOR NOTES:

1. ALLOWABLE ANCHORS SHALL BE AS LISTED IN APPROPRIATE ANCHOR SCHEDULE AND SPACED SHOWN ON SHEET 1 ELEVATIONS.
2. ANCHORS SHALL BE INSTALLED IN ACCORDANCE WITH MANUFACTURER'S RECOMMENDATIONS. MINIMUM EMBEDMENT DEPTHS AND EDGE DISTANCES SHALL APPLY AS NOTED IN APPROVALS
3. SYSTEM MAY BE INSTALLED TO CONCRETE, HOLLOW BLOCK, WOOD, STEEL OR AN APPROVED IMPACT RESISTANT ALUMINUM FRAME OF ALLOY 6063-T5 (MIN). FRAME SHALL BE INSTALLED PER RESPECTIVE
4. WHERE EXISTING STRUCTURE IS WOOD FRAMING, EXISTING CONDITIONS MAY VARY, FIELD VERIFY THAT FASTENERS ARE INTO ADEQUATE WOOD FRAMING MEMBERS, NOT PLYWOOD.
5. WHERE WOOD SCREENS FASTEN TO WARROR FACE OF STUD FRAMING, FASTENER SHALL BE LOCATED IN CENTER OF NOMINAL (MIN) WOOD STUD (3/4". EDGE DISTANCE IS ACCEPTABLE FOR WOOD FRAMING), AND SHALL PENETRATE 1.5" MIN. WOOD STUD SHALL BE "SOUTHERN PINE C-0.55 OR GREATER DENSITY, WOOD SCREW SHALL HAVE PHILLIPS
6. MINIMUM EMBEDMENT AND EDGE DISTANCE EXCLUDES STUCCO,
7. ALL SCREWS TO ALUMINUM SHALL BE INSTALLED WITH FULL HEAD PENETRATION AND MINIMUM 0.5" EDGE DISTANCE TO APPROVED 6063-T5 (MIN) ALUMINUM FRAME (0.125" MIN THICKNESS).

ALL DIMENSION IN INCHES

BILL OF MATERIAL			
ITEM	DESCRIPTION	MATERIAL	QTY
01	Hurricane Build Out	6063-T5	4
02	Hurricane Clamp	6063-T5	4
03	Window Cover-088	6063-T5	4
04	Window Corner 03A CHR	6063-T5	4
05	#6x3/8" -17D1	STAINLESS STEEL	50
06	#10 X 2 3/4" -170	STAINLESS STEEL	45
07	Tesa Tape	-	4
08	Sontoprene Insulator	Sontoprene	4



11/8/12