

| MINIMUM SEPARATION FROM GLASS  |     |  |        |
|--|-----|--|--------|
| SEPARATION REQD. DUE TO WIND LOAD  |     | SEPARATION REQD. DUE TO LARGE MISSILE IMPACT |        |
| SHUTTER SPAN = H =   | IN. | FOR SLAT SPANS UPTO                          |        |
| DESIGN LOAD = Pd =   | PSF |  |        |
| FACTOR = K = Pd/100 =  | IN. | 96"  | 2-1/8" |
| READING FROM SPAN D. CURVE = D =   | IN. | 120"   | 3"     |
| DEFLECTION AT Pd = K*D =   | IN. | 150"   | 3-1/4" |
| MIN. SEPARATION REQD. = K*D+1" =   | IN. |  |        |
| FOR INSTALLATIONS UPTO 30' OF GRADE USE MAXIMUM OF WIND LOAD OR IMPACT LOAD REQUIREMENTS SHOWN ABOVE |     |  |        |
| FOR INSTALLATIONS ABOVE 30' OF GRADE IGNORE LARGE MISSILE IMPACT REQUIREMENT.                        |     |  |        |
| NOTE: NO PART OF SHUTTER SHALL BE UNDER 30' ABOVE GRADE TO WAIVE LARGE MISSILE IMPACT REQUIREMENT.   |     |  |        |

LARGE MISSILE IMPACT RESISTANT PRODUCT  
COMPLY WITH TAS 202, 201 AND 203 OF FBC.

**GENERAL NOTES**

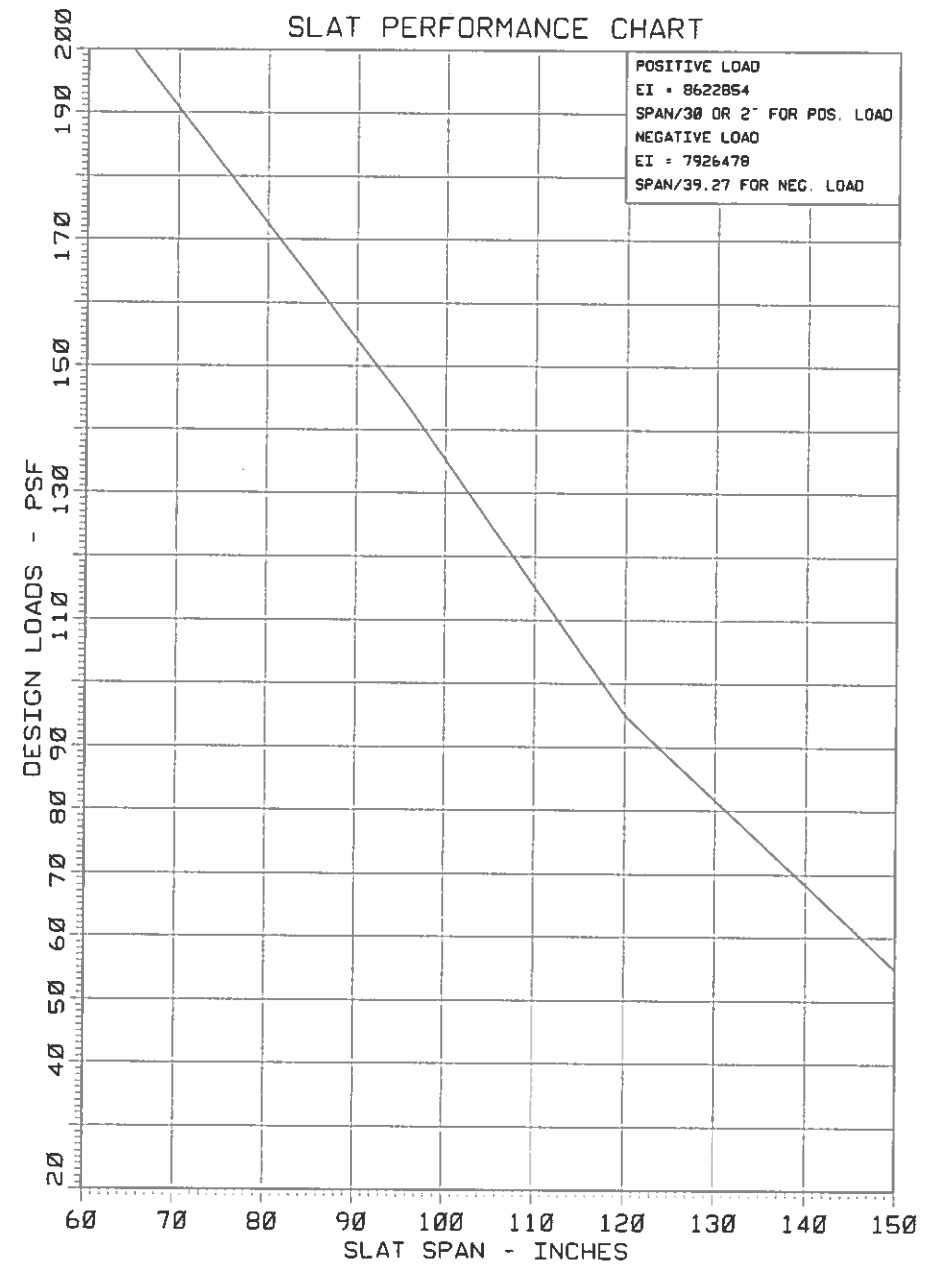
1. THIS PRODUCT HAS BEEN DESIGNED AND TESTED TO COMPLY WITH THE REQUIREMENTS OF THE 2006 INTERNATIONAL RESIDENTIAL CODE (IRC) AND 2006 INTERNATIONAL BUILDING CODE (IBC) WITH TEXAS REVISIONS. TESTING PERFORMED IN ACCORDANCE WITH FLORIDA PROTOCOLS TAS201, 202 & 203.
2. DESIGN CRITERIA FOR ALUMINUM, MINIMUM MECHANICAL PROPERTIES, AND SAFETY FACTORS ARE IN ACCORDANCE WITH THE "ALUMINUM CONSTRUCTION MANUAL" LATEST EDITION.
3. ALUMINUM ALLOYS: ALL EXTRUSIONS SHALL BE ALLOY AS SHOWN
4. STEEL SURFACES TO BE PLACED IN CONTACT WITH ALUMINUM SHALL BE GIVEN ONE COAT OF ZINC CHROMATE PRIMER IN ACCORDANCE WITH FEDERAL SPEC. NO. TTP-645, OR BE GALVANIZED.
5. ANCHORS SHALL BE AS SHOWN ON DETAILS. ANCHOR EMBEDMENT TO BASE MATERIAL SHALL BE BEYOND WALL DRESSING OR STUCCO.
6. ALL BOLTS SHALL BE STAINLESS STEEL, ALUMINUM ALLOY 2024-T4 OR 7075-T6, OR PLATED STEEL. WING NUTS TO BE OF ZINC ALLOY.
7. DESIGN CRITERIA FOR SLATS: MAX DEFLECTION  $\leq$  THE LESSER OF L/30 OR 2".
8. ANCHORING OR LOADING CONDITIONS OTHER THAN THOSE SHOWN IN THESE DETAILS ARE NOT PART OF THIS APPROVAL.
9. A LOAD DURATION INCREASE IN ALLOWABLE STRESS IS USED IN DESIGN OF ANCHORS INTO WOOD ONLY.

**PRODUCT MARKING**

A LABEL SHALL BE AFFIXED ON LOCKING MEMBER OF UNIT ABOVE LOCK WITH THE FOLLOWING STATEMENT.

JUPITER INDUSTRIES LLC  
12311 CRYSTAL COMMERCE LOOP, UNIT #1  
FORT MYERS, FL. 33966  
TDI PRODUCT EVALUATION  
FLORIDA BUILDING COMMISSION

FOR INSTALLATION DETAILS SEE SHEETS 3 THRU 6.



USE SLAT PERFORMANCE CHART TO VERIFY SLAT CAPACITY FOR THE REQUIRED DESIGN LOAD FOR THE PARTICULAR LOCATION.

DESIGN LOADS SHALL BE CALCULATED AS PER REQUIREMENTS OF ASCE 7-10.

JAVAD AHMAD  
TEXAS PE # 106516

*[Signature]*

OCT 21 2013

afC

AL-FAROOQ CORPORATION

ENGINEERS & PRODUCT DEVELOPMENT  
1235 S.W. 87 AVE  
MIAMI, FLORIDA 33174  
TEL (305) 264-8100 FAX (305) 262-6978

---

REGENCY ALUMINUM ACCORDION SHUTTER

JUPITER INDUSTRIES LLC

12311 CRYSTAL COMMERCE LOOP, UNIT #1  
FORT MYERS, FL. 33966  
TEL. (239) 225-9041 FAX. (239) 225-0923

---

|            |    |      |    |             |
|------------|----|------|----|-------------|
| revisions: | no | date | by | description |
|            |    |      |    |             |

---

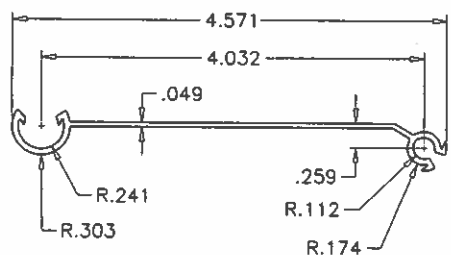
date: 10-03-13  
scale: 1/2" = 1"  
dr. by: HAMID  
chk. by:

---

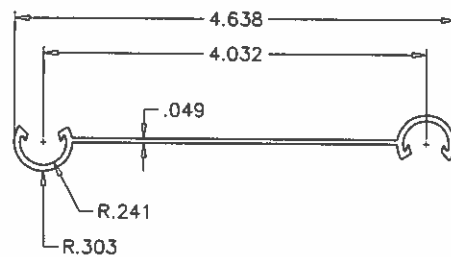
drawing no.  
**13-04**

sheet 1 of 7

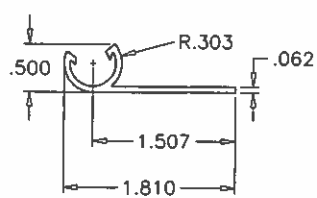
ACCORDION/13-04J1



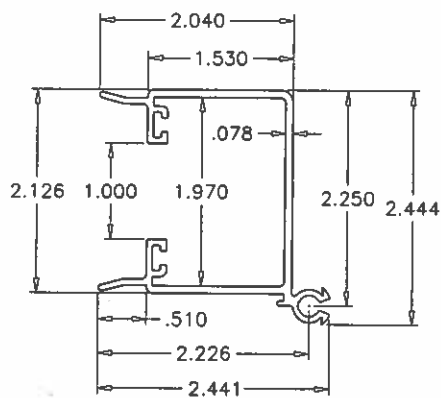
**SLAT**  
6063-T6



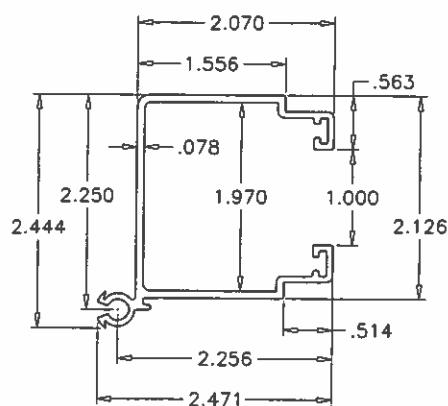
**FLOATER SLAT**  
6063-T6



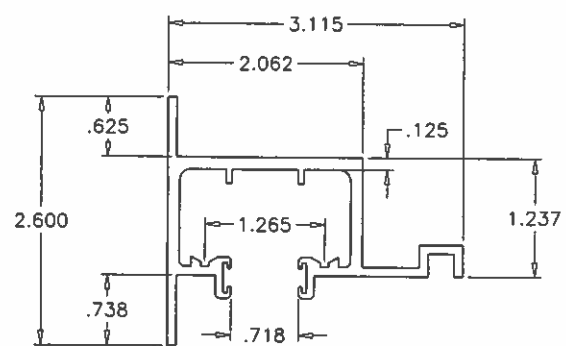
**FEMALE END SLAT**  
6063-T6



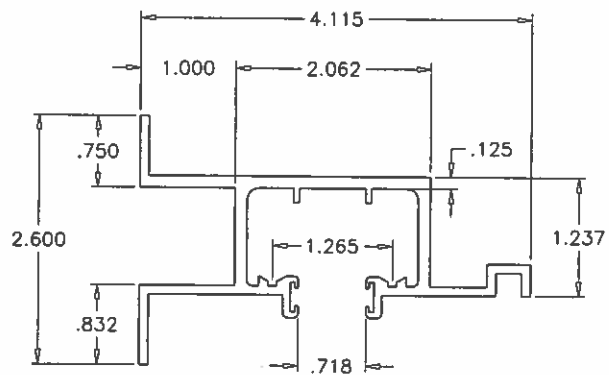
**FEMALE LOCKING SLAT**  
6063-T6



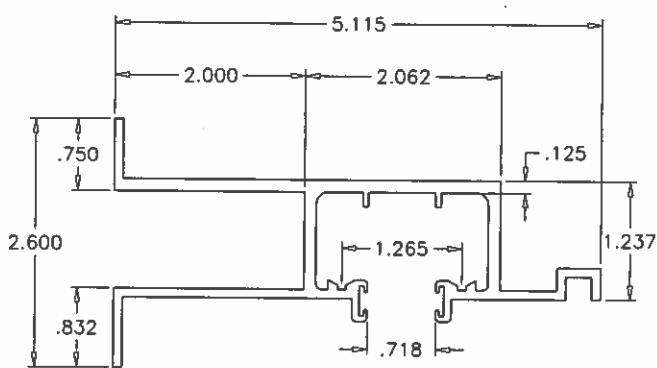
**MALE LOCKING SLAT**  
6063-T6



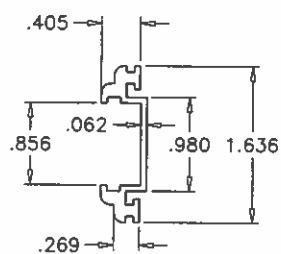
**WALL HEADER**  
6063-T6



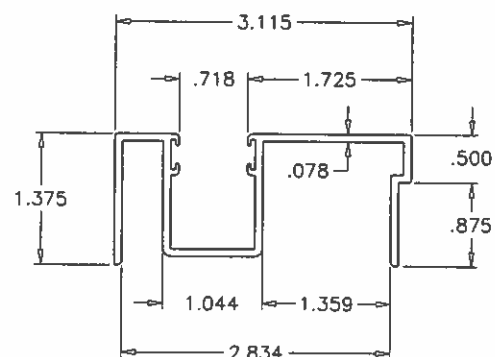
**1" BUILT-OUT WALL HEADER**  
6063-T6



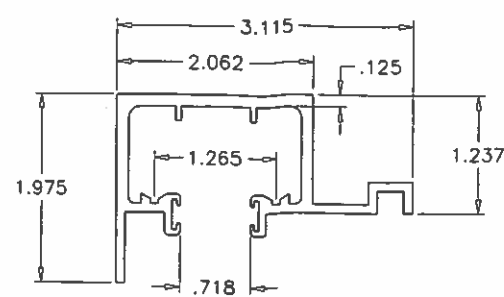
**2" BUILT-OUT WALL HEADER**  
6063-T6



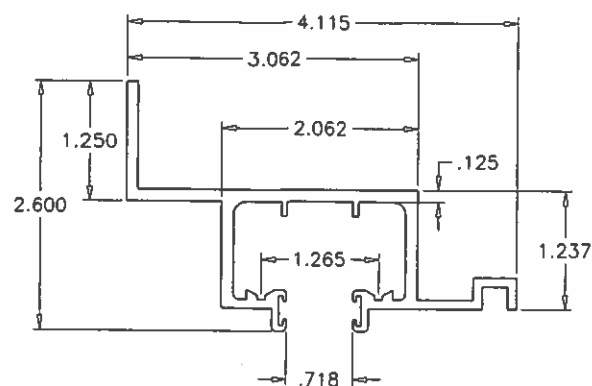
**LOCKING SLAT INSERT**  
6063-T6



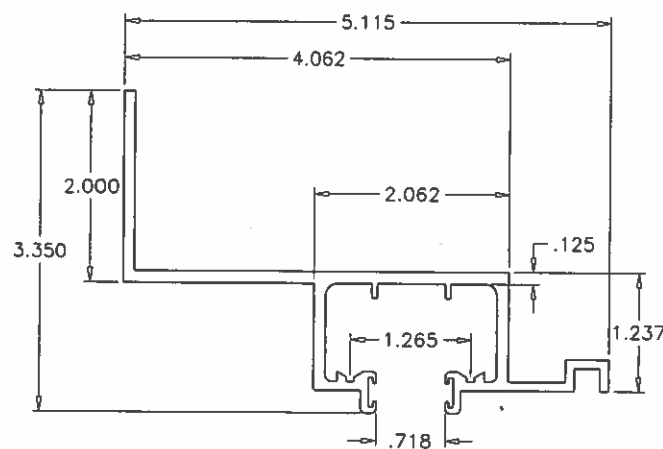
**BOTTOM SILL TRACK**  
6063-T6



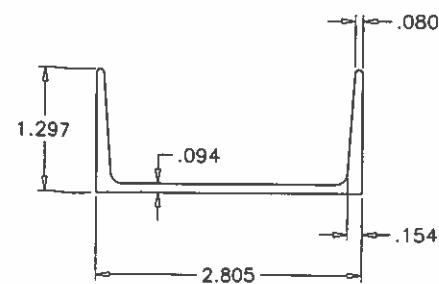
**CEILING HEADER**  
6063-T6



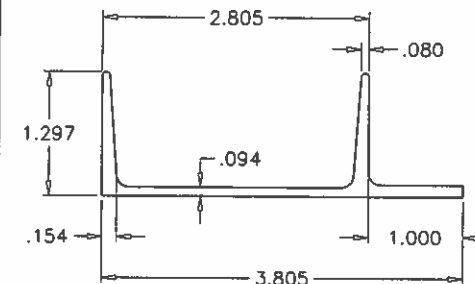
**ALT. 1" BUILT-OUT WALL HEADER**  
6063-T6



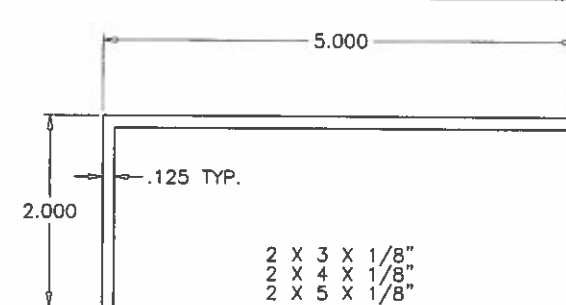
**ALT. 2" BUILT-OUT WALL HEADER**  
6063-T6



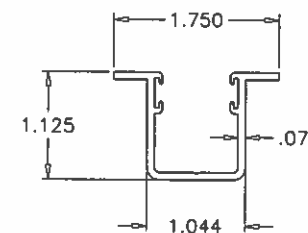
**BOTTOM TRACK ADAPTER**  
6063-T6



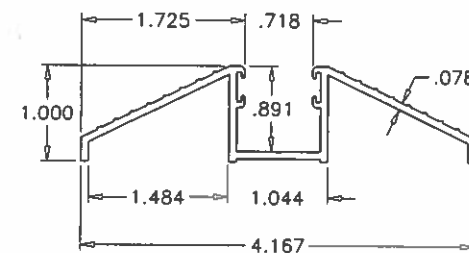
**ALT. BOTTOM TRACK ADAPTER**  
6063-T6



**BUILT-OUT ANGLES**  
6063-T6



**EMBEDDED TRACK**  
6063-T6



**THRESHOLD TRACK**  
6063-T6

**af c**  
**AL-FAROOQ CORPORATION**  
ENGINEERS & PRODUCT DEVELOPMENT  
1235 S.W. 87 AVE  
MIAMI, FLORIDA 33174  
TEL. (305) 264-8100 FAX. (305) 262-6978  
ACCORDION/13-04J1

'REGENCY' ALUMINUM ACCORDION SHUTTER  
**JUPITER INDUSTRIES LLC**  
12311 CRYSTAL COMMERCE LOOP, UNIT #1  
FORT MYERS, FL. 33966  
TEL. (239) 225-9041 FAX. (239) 225-0923

| no | date | description |
|----|------|-------------|
|    |      |             |
|    |      |             |
|    |      |             |
|    |      |             |

date: 10-03-13  
scale: 1/2" = 1"  
dr. by: HAMID  
chk. by:

JAVAD AHMAD  
TEXAS PE # 106516  
OCT 21 2013  
*[Signature]*

drawing no.  
**13-04**  
sheet 2 of 7

**WALL MOUNTS**

| ANCHOR TYPE | CHART TO USE |       |      |       |
|-------------|--------------|-------|------|-------|
|             | CONC.        | BLOCK | WOOD | METAL |
| A           | 8            | 6     | -    | -     |
| B           | 8            | 6     | -    | -     |
| C           | 8            | 4     | -    | -     |
| D           | 8            | 5     | -    | -     |
| E           | -            | -     | 8    | -     |
| F           | -            | -     | -    | 5     |

**INSIDE MOUNTS**

| ANCHOR TYPE | CHART TO USE |       |      |       |
|-------------|--------------|-------|------|-------|
|             | CONC.        | BLOCK | WOOD | METAL |
| A           | 4            | 2     | -    | -     |
| B           | 5            | 2     | -    | -     |
| C           | 5            | 1     | -    | -     |
| D           | 4            | 2     | -    | -     |
| F           | -            | -     | 3    | -     |
| G           | -            | -     | -    | 3     |

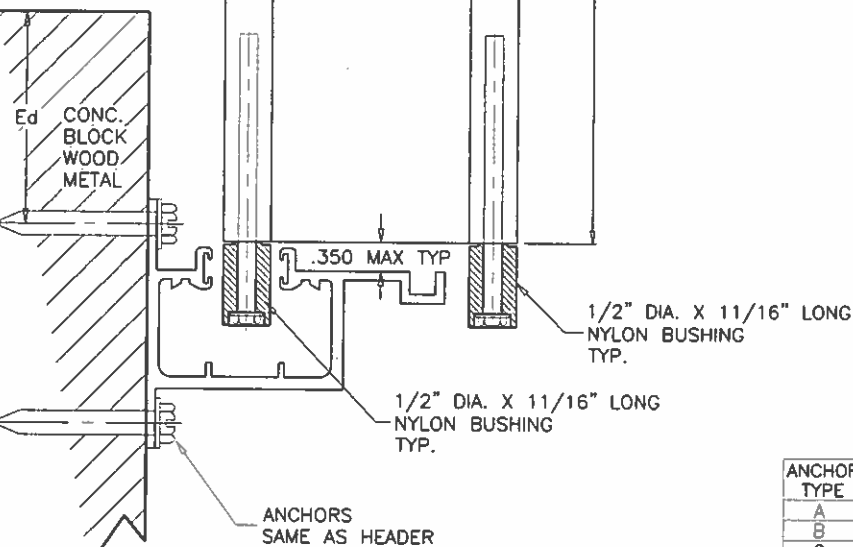
2-1/2" STAGGERED  
 1/2" DIA. X 1/2" LONG NYLON BUSHING TYP.  
 #14 X 2-3/4" ST/ST SCREWS TYP.

NYLON WHEELS IN METALLIC BUSHING TYP.

1/2" DIA. X 11/16" LONG NYLON BUSHING TYP.

SLAT SPAN  
 SEE CHART ON SHEET 1

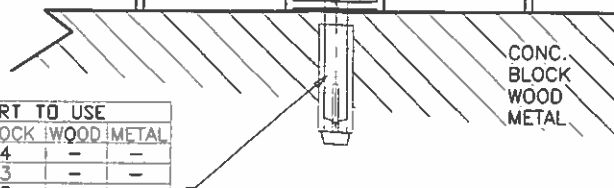
**SECTION A-A**



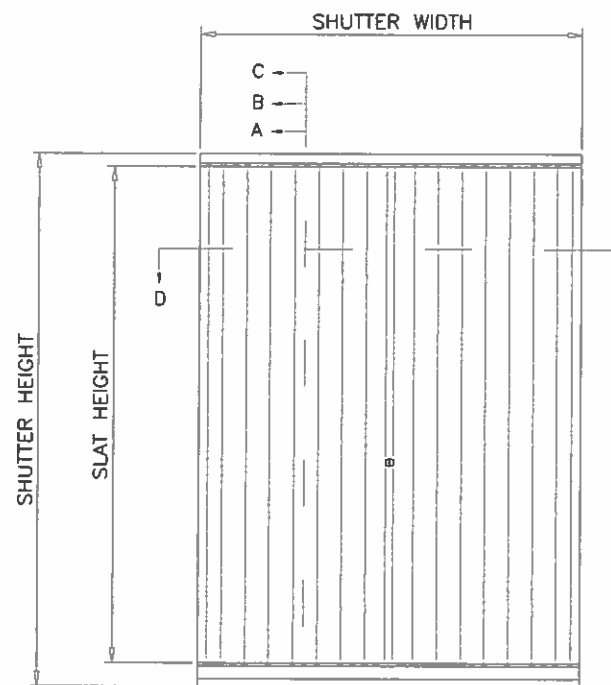
ANCHORS SAME AS HEADER

| ANCHOR TYPE | CHART TO USE |       |      |       |
|-------------|--------------|-------|------|-------|
|             | CONC.        | BLOCK | WOOD | METAL |
| A           | 6            | 4     | -    | -     |
| B           | 7            | 3     | -    | -     |
| C           | 6            | 3     | -    | -     |
| D           | 5            | 4     | -    | -     |
| E           | -            | -     | 4    | -     |
| G           | -            | -     | -    | 5     |

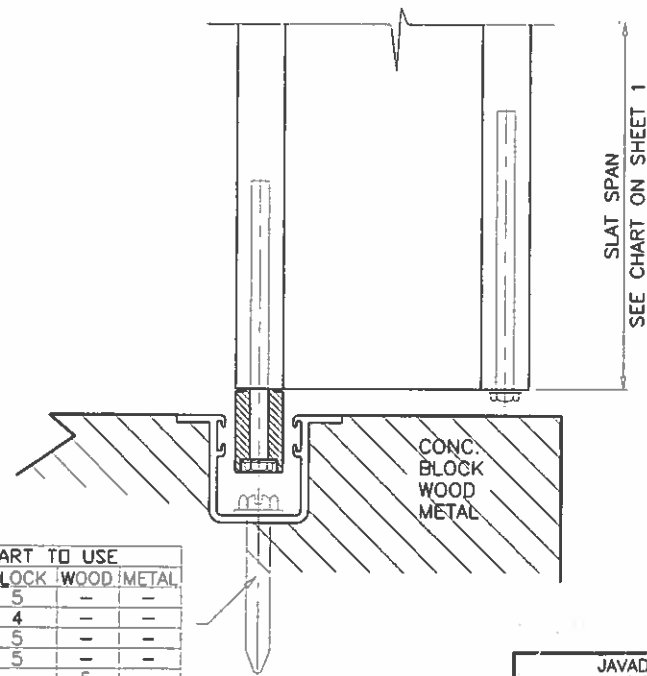
**SECTION B-B**



| ANCHOR TYPE | CHART TO USE |       |      |       |
|-------------|--------------|-------|------|-------|
|             | CONC.        | BLOCK | WOOD | METAL |
| A           | 7            | 5     | -    | -     |
| B           | 8            | 4     | -    | -     |
| C           | 8            | 5     | -    | -     |
| D           | 7            | 5     | -    | -     |
| E           | -            | -     | 5    | -     |
| G           | -            | -     | -    | 7     |



**TYPICAL ELEVATION**



SLAT SPAN  
 SEE CHART ON SHEET 1

FOR GENERAL NOTES AND EXTRUSION DETAILS SEE SHEETS 1 & 2.  
 FOR WOOD INSTALLATIONS SEE SHEET 6.

Ed = TYPICAL EDGE DISTANCE  
 CONC. & BLOCK = 12d (12 ANCHOR DIAMETERS)  
 WOOD = 5d  
 FOR LESSER EDGE DISTANCES SEE SHEET 7 OF 7.

HEADER AND SILL DETAILS CAN BE USED IN ANY COMBINATIONS.

ANCHORS: EMBEDMENT & EDGE DISTANCES SHOWN ARE BEYOND THE WALL & FLOOR COVERING (STUCCO, TILES, ETC.)

JAVAD AHMAD  
 TEXAS PE # 106516  
 OCT 21 2013

**afC**  
**AL-FAROOQ CORPORATION**  
 ENGINEERS & PRODUCT DEVELOPMENT  
 1235 S.W. 87 AVE  
 MIAMI, FLORIDA 33174  
 TEL. (305) 264-8100 FAX. (305) 262-6978

'REGENCY' ALUMINUM ACCORDION SHUTTER  
**JUPITER INDUSTRIES LLC**  
 12311 CRYSTAL COMMERCE LOOP, UNIT #1  
 FORT MYERS, FL. 33966  
 TEL. (239) 225-9041 FAX. (239) 225-0923

| revisions: | no | date | by | description |
|------------|----|------|----|-------------|
|            |    |      |    |             |

date: 10-03-13  
 scale: 1/2" = 1"  
 dr. by: HAMID  
 chk. by:

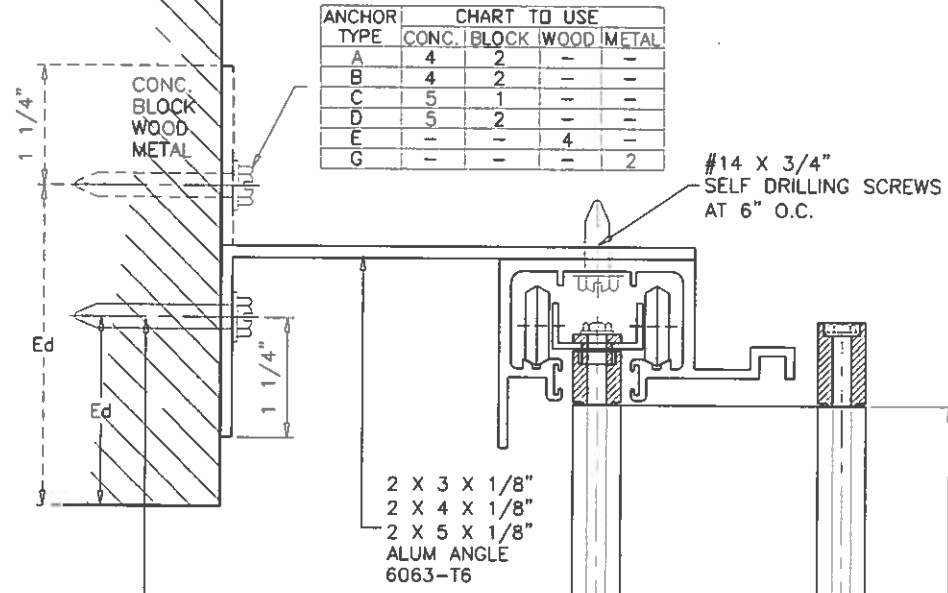
drawing no.  
**13-04**  
 sheet 3 of 7

ACCORDION/13-04JI

**BUILT-OUT CONDITION**

**BUILT-OUT HEADER**

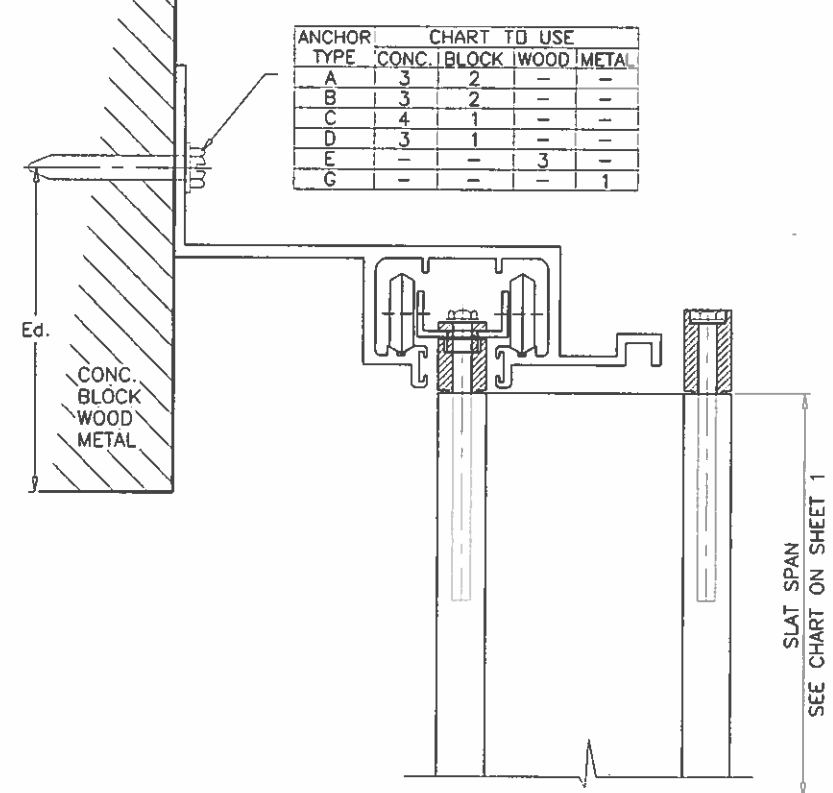
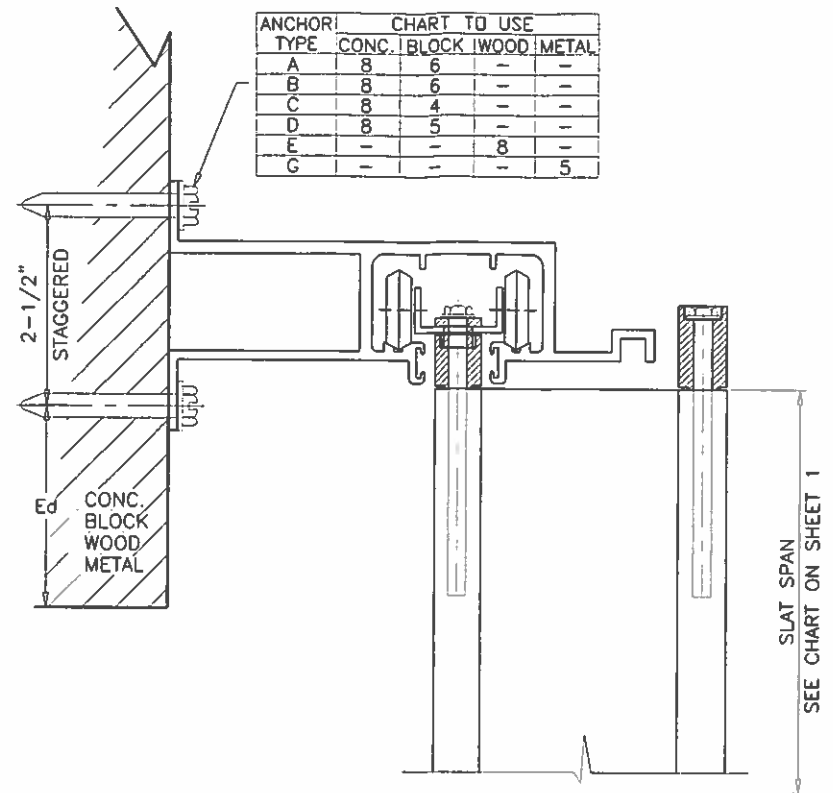
**ALT. BUILT-OUT HEADER**



| ANCHOR TYPE | CHART TO USE |       |      |       |
|-------------|--------------|-------|------|-------|
|             | CONC.        | BLOCK | WOOD | METAL |
| A           | 4            | 2     | -    | -     |
| B           | 4            | 2     | -    | -     |
| C           | 5            | 1     | -    | -     |
| D           | 5            | 2     | -    | -     |
| E           | -            | -     | 4    | -     |
| G           | -            | -     | -    | 2     |

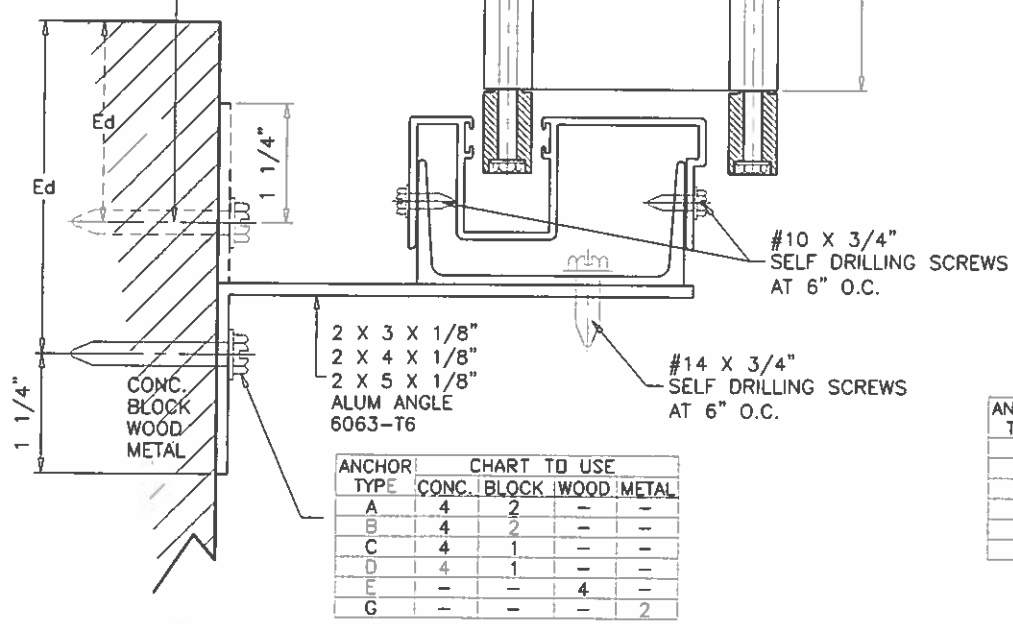
| ANCHOR TYPE | CHART TO USE |       |      |       |
|-------------|--------------|-------|------|-------|
|             | CONC.        | BLOCK | WOOD | METAL |
| A           | 8            | 6     | -    | -     |
| B           | 8            | 6     | -    | -     |
| C           | 8            | 4     | -    | -     |
| D           | 8            | 5     | -    | -     |
| E           | -            | -     | 8    | -     |
| G           | -            | -     | -    | 5     |

| ANCHOR TYPE | CHART TO USE |       |      |       |
|-------------|--------------|-------|------|-------|
|             | CONC.        | BLOCK | WOOD | METAL |
| A           | 3            | 2     | -    | -     |
| B           | 3            | 2     | -    | -     |
| C           | 4            | 1     | -    | -     |
| D           | 3            | 1     | -    | -     |
| E           | -            | -     | 3    | -     |
| G           | -            | -     | -    | 1     |



| ANCHOR TYPE | CHART TO USE |       |      |       |
|-------------|--------------|-------|------|-------|
|             | CONC.        | BLOCK | WOOD | METAL |
| A           | 5            | 3     | -    | -     |
| B           | 5            | 4     | -    | -     |
| C           | 6            | 2     | -    | -     |
| D           | 5            | 2     | -    | -     |
| E           | -            | -     | 5    | -     |
| G           | -            | -     | -    | 3     |

| ANCHOR TYPE | CHART TO USE |       |      |       |
|-------------|--------------|-------|------|-------|
|             | CONC.        | BLOCK | WOOD | METAL |
| A           | 4            | 2     | -    | -     |
| B           | 5            | 3     | -    | -     |
| C           | 5            | 1     | -    | -     |
| D           | 5            | 2     | -    | -     |
| E           | -            | -     | 5    | -     |
| G           | -            | -     | -    | 2     |



| ANCHOR TYPE | CHART TO USE |       |      |       |
|-------------|--------------|-------|------|-------|
|             | CONC.        | BLOCK | WOOD | METAL |
| A           | 4            | 2     | -    | -     |
| B           | 4            | 2     | -    | -     |
| C           | 4            | 1     | -    | -     |
| D           | 4            | 1     | -    | -     |
| E           | -            | -     | 4    | -     |
| G           | -            | -     | -    | 2     |

| ANCHOR TYPE | CHART TO USE |       |      |       |
|-------------|--------------|-------|------|-------|
|             | CONC.        | BLOCK | WOOD | METAL |
| A           | 5            | 3     | -    | -     |
| B           | 5            | 2     | -    | -     |
| C           | 5            | 2     | -    | -     |
| D           | 4            | 2     | -    | -     |
| E           | -            | -     | 4    | -     |
| G           | -            | -     | -    | 3     |

**ADJUSTABLE SILL**

| ANCHOR TYPE | CHART TO USE |       |      |       |
|-------------|--------------|-------|------|-------|
|             | CONC.        | BLOCK | WOOD | METAL |
| A           | 3            | 1     | -    | -     |
| B           | 3            | 1     | -    | -     |
| C           | 3            | 1     | -    | -     |
| D           | 3            | 1     | -    | -     |
| E           | -            | -     | 2    | -     |
| G           | -            | -     | -    | 1     |

**ALT. ADJUSTABLE SILL**

**SECTION C-C**

HEADER AND SILL DETAILS CAN BE USED IN ANY COMBINATIONS.

JAVAD AHMAD  
TEXAS PE # 106516  
2.1.2013

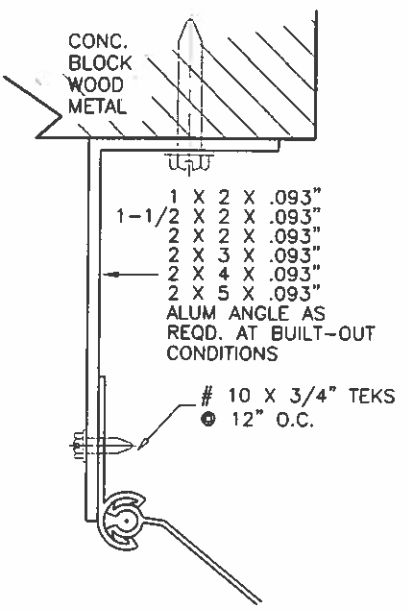
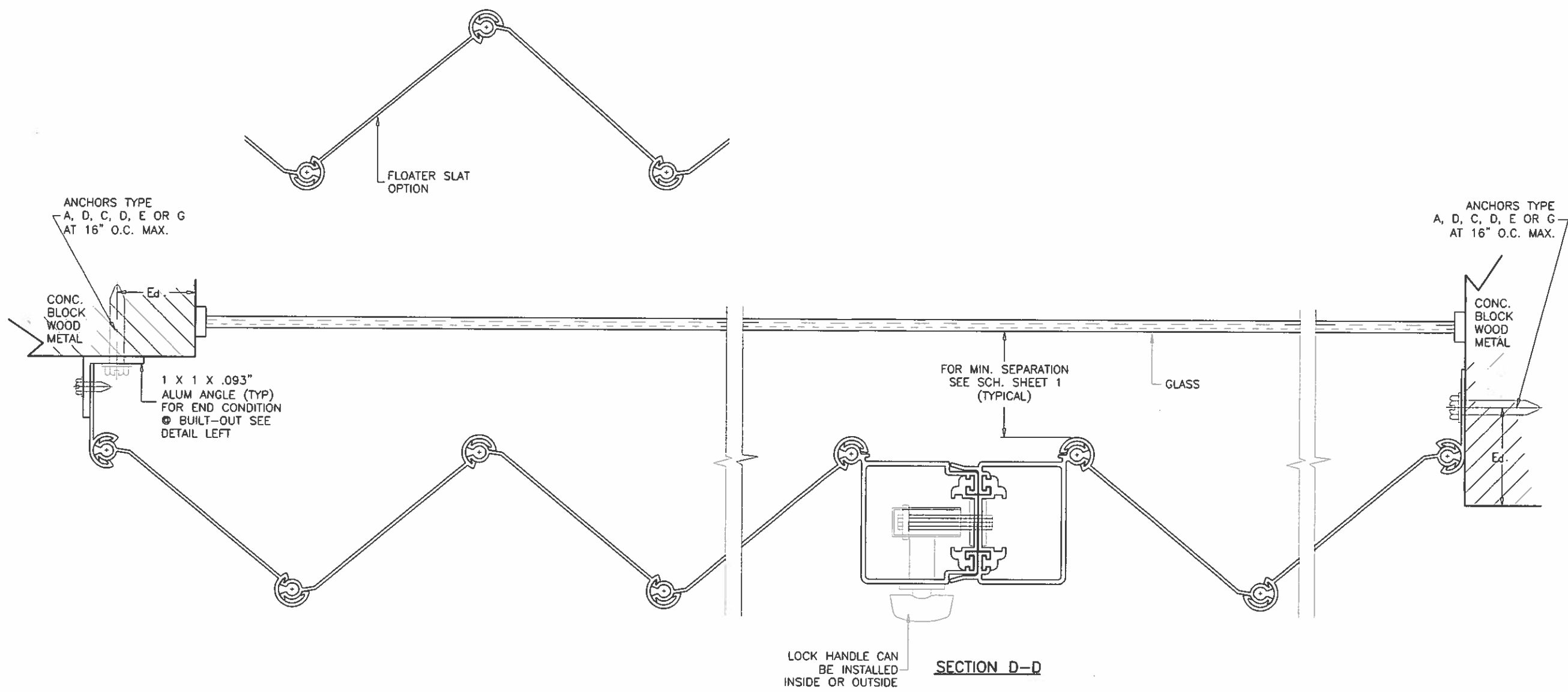
**af c**  
**AL-FAROOQ CORPORATION**  
 ENGINEERS & PRODUCT DEVELOPMENT  
 1235 S.W. 87 AVE  
 MIAMI, FLORIDA 33174  
 TEL. (305) 264-8100 FAX. (305) 262-6978  
 ACCORDION/13-04J1

REGENCY ALUMINUM ACCORDION SHUTTER  
**JUPITER INDUSTRIES LLC**  
 12311 CRYSTAL COMMERCE LOOP, UNIT #1  
 FORT MYERS, FL. 33966  
 TEL. (239) 225-9041 FAX. (239) 225-0923

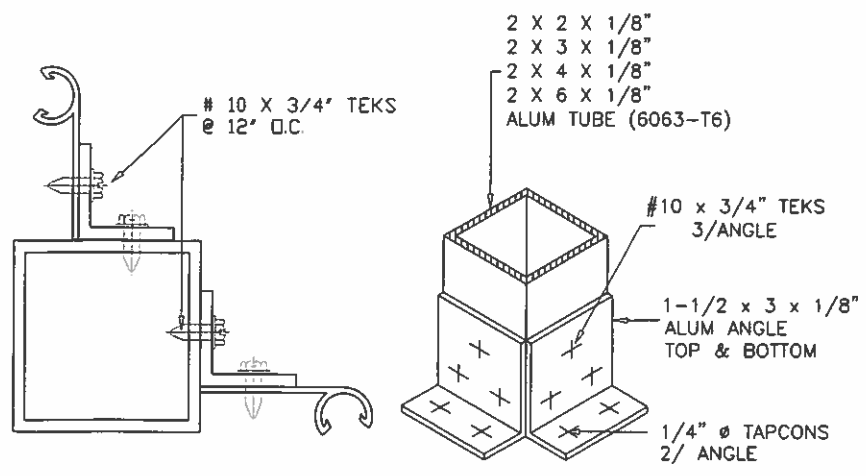
| revisions: | no. | date | by | description |
|------------|-----|------|----|-------------|
|            |     |      |    |             |

date: 10-03-13  
 scale: 1/2" = 1"  
 dr. by: HAMID  
 chk. by:  

drawing no. **13-04**  
 sheet 4 of 7



**END CONDITION AT BUILT-OUT**



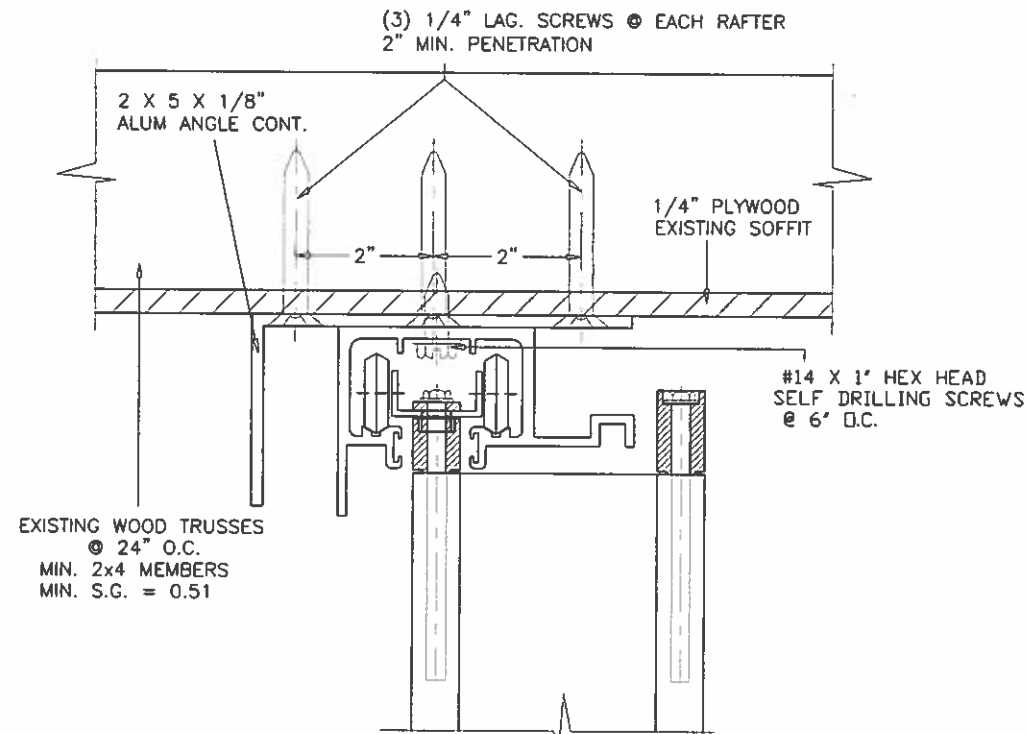
**FIXED CORNER DETAIL**

JAVAD AHMAD  
 TEXAS PE # 106516  
 OCT 21 2013  
 [Signature]

| revisions: |                     |
|------------|---------------------|
| no         | date by description |
|            |                     |
|            |                     |
|            |                     |
|            |                     |

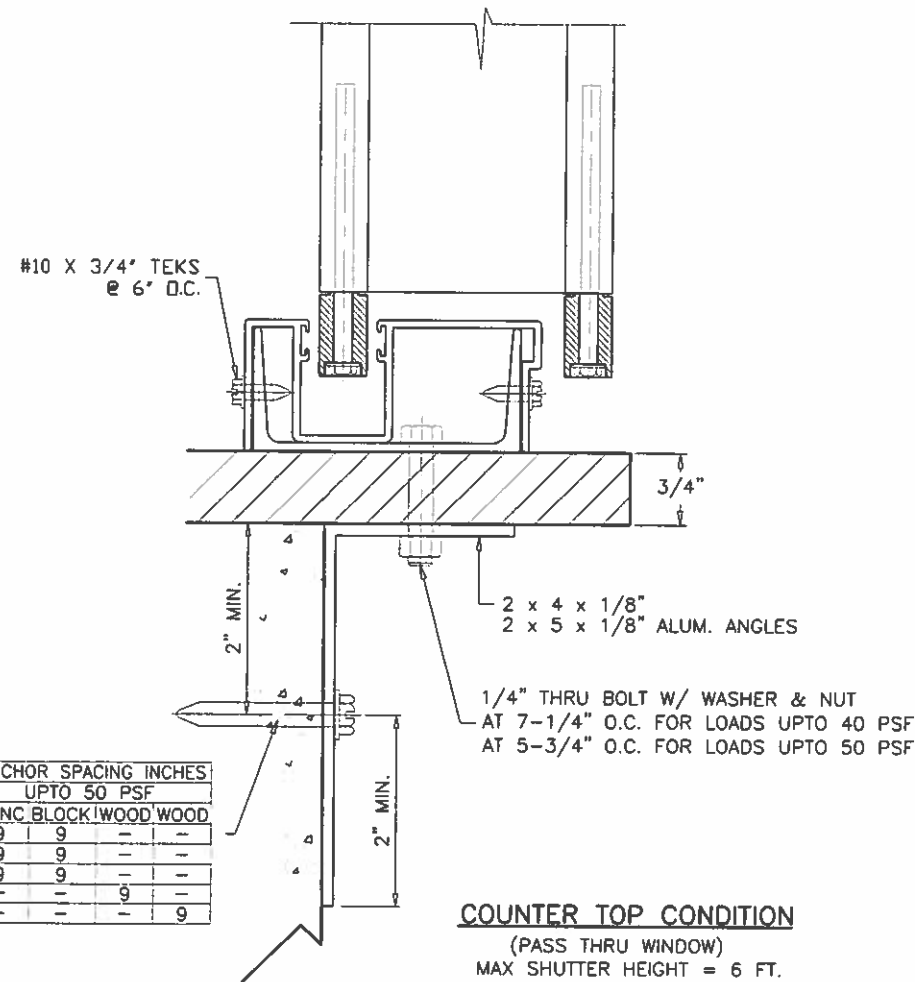
  

|                   |                  |               |          |
|-------------------|------------------|---------------|----------|
| date: 10-03-13    | scale: 1/2" = 1" | dr. by: HAMID | chk. by: |
| drawing no. 13-04 |                  | sheet 5 of 7  |          |



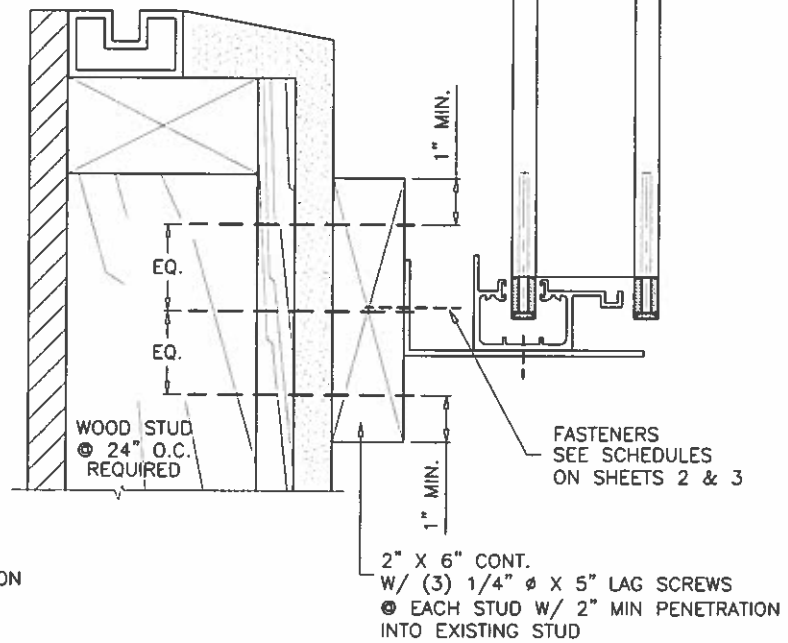
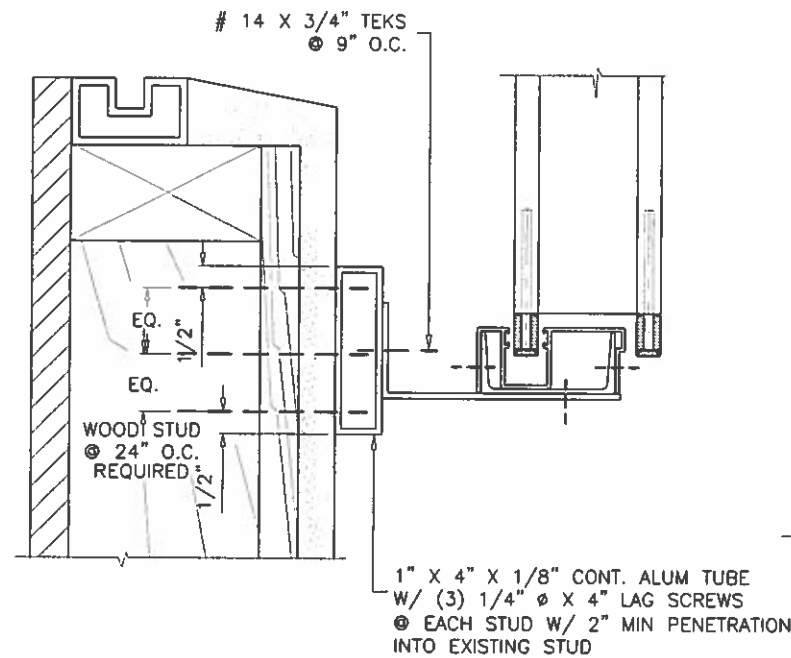
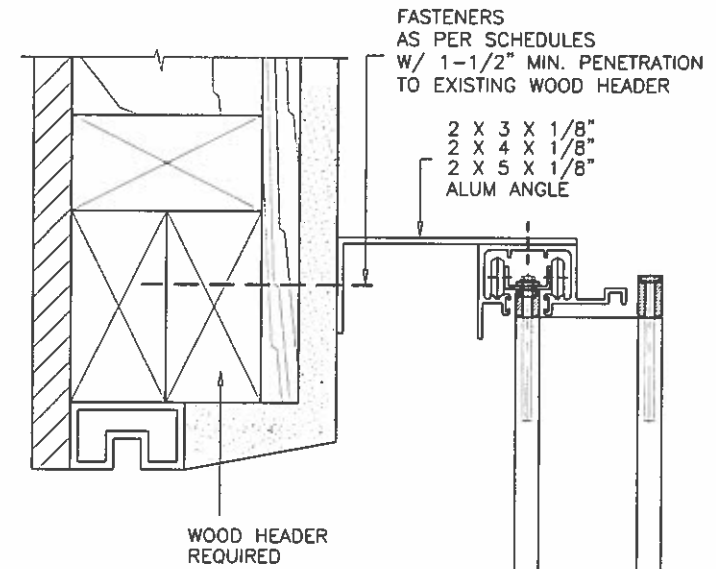
**HEADER CONNECTION TO WOOD TRUSSES**

FOR SHUTTER HEIGHT OF 72" MAX. DESIGN LOAD = 70 PSF  
 FOR SHUTTER HEIGHT OF 84" MAX. DESIGN LOAD = 60 PSF  
 FOR SHUTTER HEIGHT OF 96" MAX. DESIGN LOAD = 52 PSF  
 FOR SHUTTER HEIGHT OF 108" MAX. DESIGN LOAD = 46 PSF



**COUNTER TOP CONDITION**  
 (PASS THRU WINDOW)  
 MAX SHUTTER HEIGHT = 6 FT.

| ANCHOR TYPE | ANCHOR SPACING INCHES |                    |
|-------------|-----------------------|--------------------|
|             | UPTO 50 PSF           | CONC. BLOCK / WOOD |
| A           | 9                     | 9                  |
| B           | 9                     | 9                  |
| C           | 9                     | 9                  |
| E           | 11                    | 9                  |
| G           | 11                    | 9                  |



FOR SHUTTER HEIGHT OF 84" MAX. DESIGN LOAD = 60 PSF  
 FOR SHUTTER HEIGHT OF 96" MAX. DESIGN LOAD = 52 PSF  
 FOR SHUTTER HEIGHT OF 108" MAX. DESIGN LOAD = 46 PSF  
 FOR SHUTTER HEIGHT OF 120" MAX. DESIGN LOAD = 42 PSF

**INSTALLATION DETAIL ON EXISTING WOOD BUCKS** SCALE: 1/4"=1"

ABOVE DETAILS SHOWS CONNECTION OF 2X4 BUCK & 1X4 ALUM TUBE TO WOOD STUDS TO PROVIDE A CONTINUOUS SURFACE FOR SHUTTER INSTALLATION.

FOR INSTALLATION DETAILS OF HEADER/SILL TO CONTINUOUS WOOD MEMBERS SEE SHEETS 3 THRU 4.

**af c**  
**AL-FAROOQ CORPORATION**  
 ENGINEERS & PRODUCT DEVELOPMENT  
 1235 S.W. 87 AVE  
 MIAMI, FLORIDA 33174  
 TEL. (305) 264-9100 FAX. (305) 262-6978  
 ACCORDION/13-04J

REGENCY ALUMINUM ACCORDION SHUTTER  
**JUPITER INDUSTRIES LLC**  
 12311 CRYSTAL COMMERCE LOOP, UNIT #1  
 FORT MYERS, FL. 33966  
 TEL. (239) 225-9041 FAX. (239) 225-0923

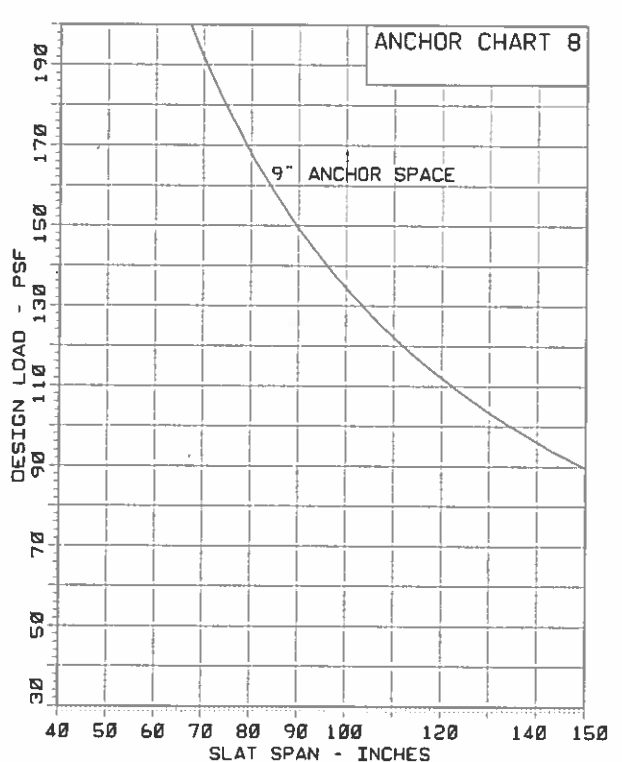
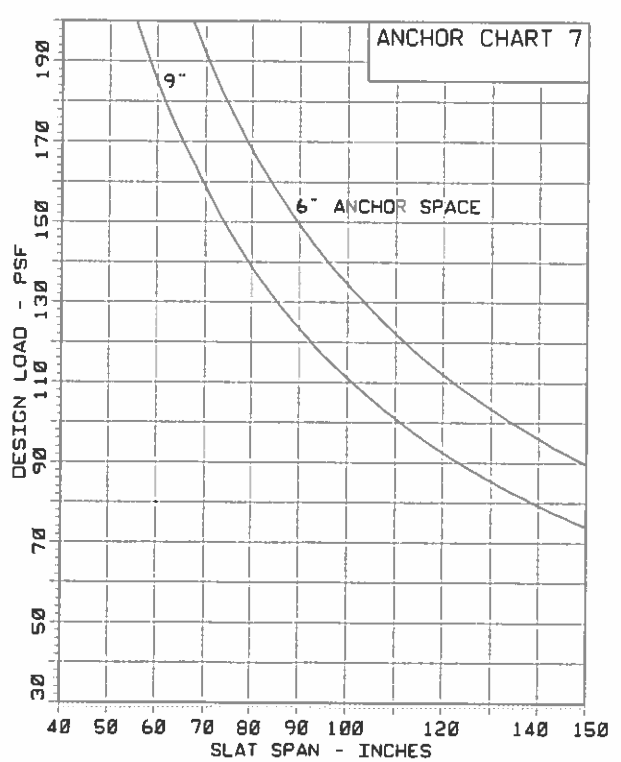
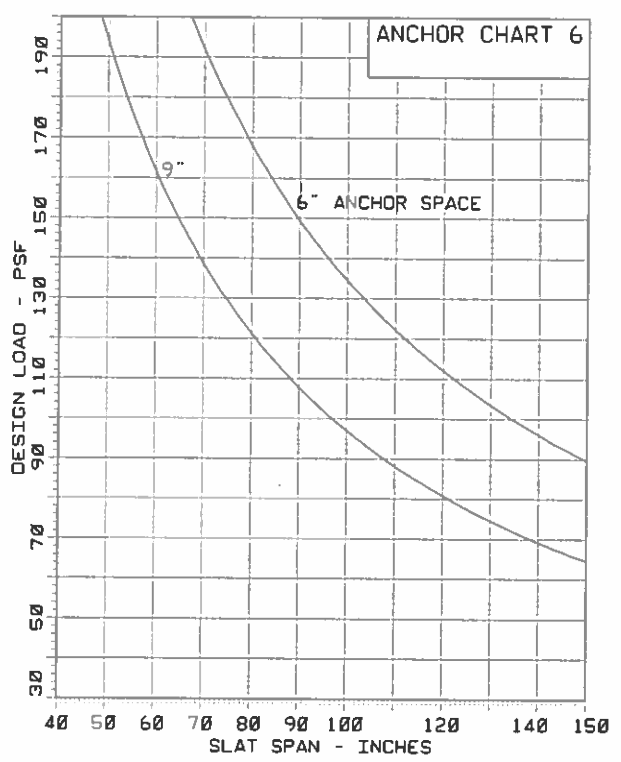
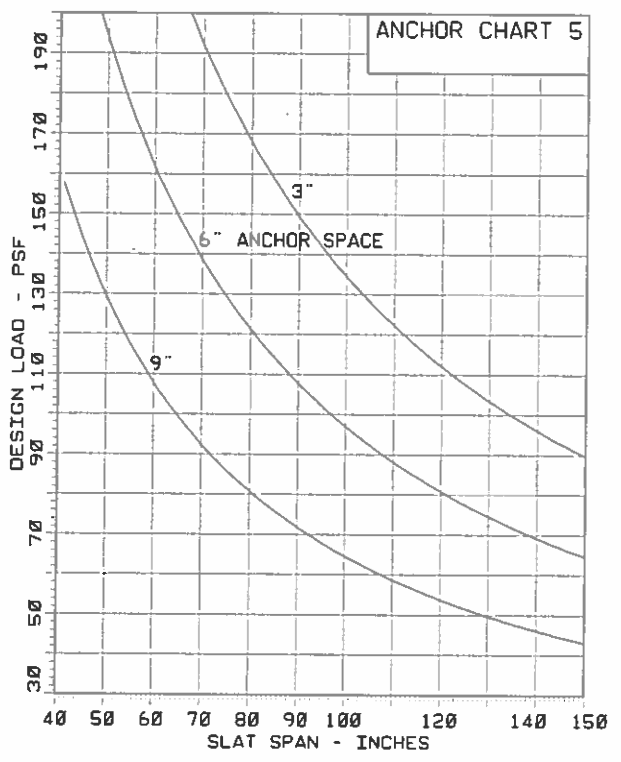
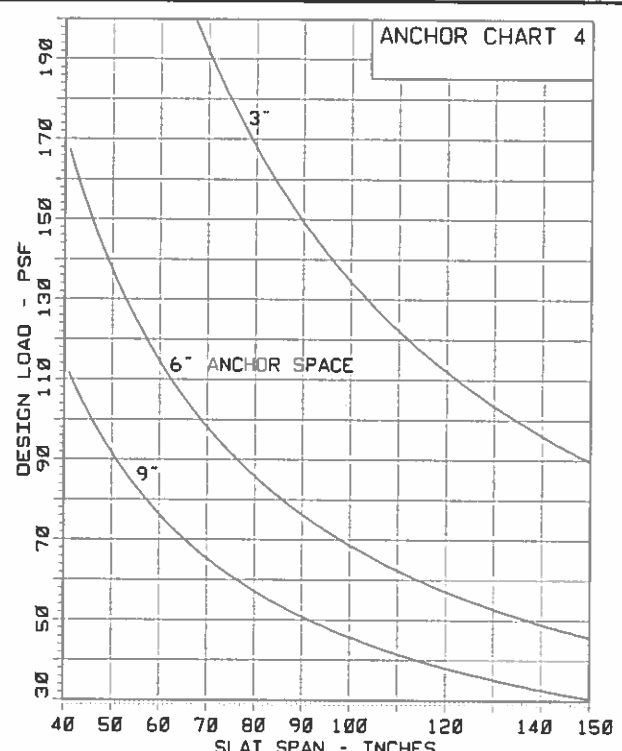
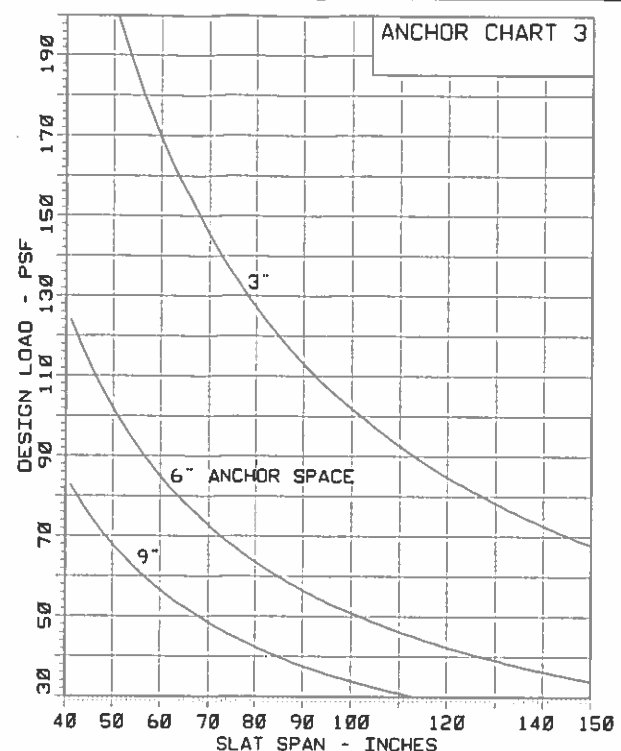
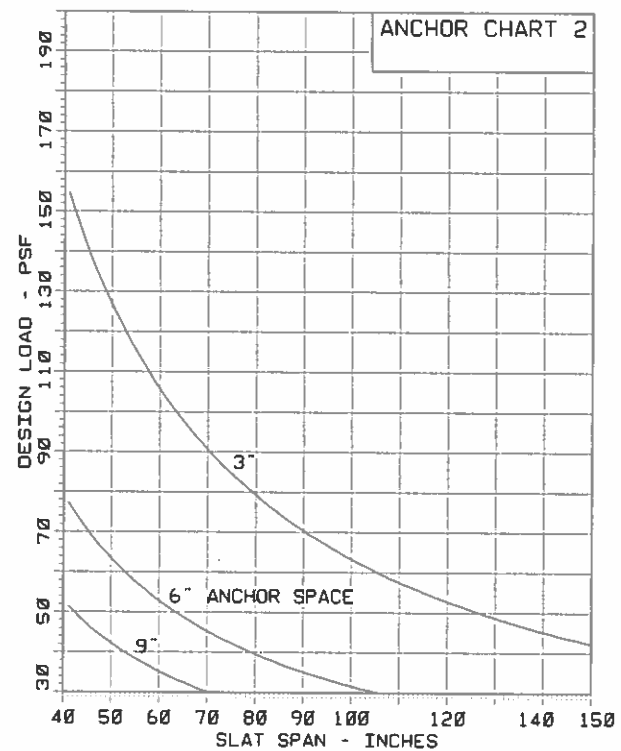
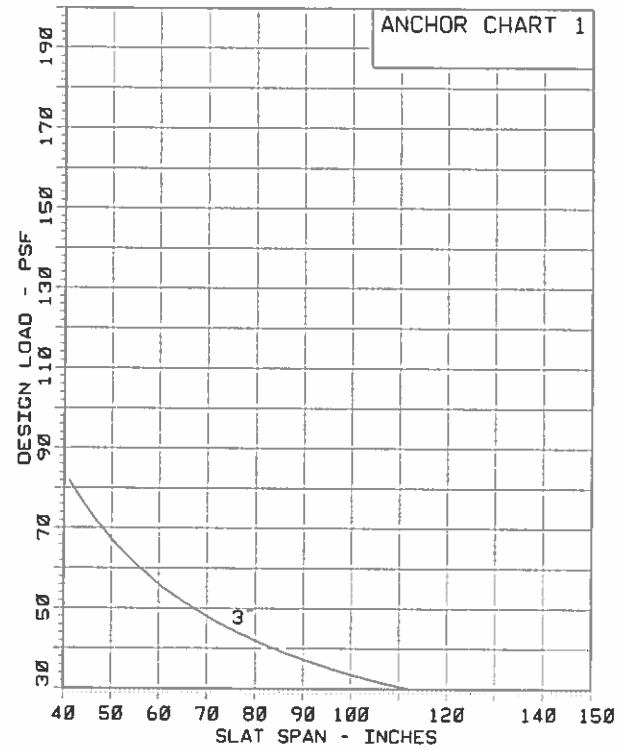
| revisions: | no. | date | by | description |
|------------|-----|------|----|-------------|
|            |     |      |    |             |

date: 10-03-13  
 scale: 1/2" = 1"  
 dr. by: HAMID  
 chk. by:

drawing no.  
**13-04**  
 sheet 6 of 7

JAVAD AHMAD  
 TEXAS PE # 106516

OCT 21 2013



**TYPICAL ANCHORS:**

- ANCHOR **(A)** = 1/4" DIA. ULTRACON (BY ELCO)  
1-3/4" EMBEDMENT INTO 3000 PSI CONC.  
1-1/4" EMBEDMENT INTO C-90 BLOCK
- ANCHOR **(B)** = 5/16" DIA. ULTRACON (BY ELCO)  
1-3/4" EMBEDMENT INTO 3000 PSI CONC.  
1-1/4" EMBEDMENT INTO C-90 BLOCK
- ANCHOR **(C)** = 1/4" DIA. TAPCON (BY ITW)  
1-3/4" EMBEDMENT INTO 3000 PSI CONC.  
1-1/4" EMBEDMENT INTO C-90 BLOCK

- ANCHOR **(D)** = 1/4" RAWL CALK-IN (BY POWERS)  
TOTAL ANCHOR BODY INTO 3000 PSI CONC.  
OR C-90 BLOCK
- ANCHOR **(E)** = 1/4" DIA. LAG SCREWS  
1-1/2" MIN PENETRATION INTO WOOD(S.G.=0.55)
- ANCHOR **(G)** = 1/4" DIA. KWIK-FLEX SELF DRILLING SCREWS  
INTO METAL STRUCTURES  
(STEEL OR ALUMINUM 1/8" MIN. THICK.)

NOTE: ANCHORS EMBEDMENT SHOWN IS BEYOND WALL & FLOOR COVERINGS (STUCCO, TILES, ETC.)

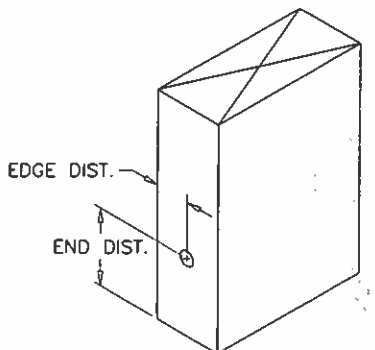
**FASTENER SPACING IN MASONRY**

CHARTS ARE BASED ON TYPICAL EDGE DISTANCE = 12d.  
FOR LESSER EDGE DISTANCE DECREASE SPACING BY  
MULTIPLYING WITH THE FACTOR BELOW

| EDGE DIST. | 12d=3" | 10d=2-1/2" | 8d=2" | 6d=1-1/2" | 5d=1-1/4" |
|------------|--------|------------|-------|-----------|-----------|
| FACTOR     | 1.00   | 0.86       | 0.71  | 0.57      | 0.50      |

EXAMPLE: FOR 3" EDGE DIST. SPACING = 12" O.C. (FROM CHART)  
FOR 2" EDGE DIST. SPACING = 12 X .71 = 8.5 O.C.

TYPICAL EDGE DISTANCE IN WOOD = 3/4"  
TYPICAL END DISTANCE IN WOOD = 1"  
NO REDUCTION FACTOR IS REQUIRED



USE CHARTS 1 THRU 8 TO VERIFY ANCHOR REQUIREMENTS AND STRESS LIMITATIONS OF LOAD/SPAN COMBINATIONS FOR HEADER AND SILL.

JAVAD AHMAD  
TEXAS PE # 106516

OCT 2 2013

**af c**

**AL-FAROOQ CORPORATION**  
ENGINEERS & PRODUCT DEVELOPMENT  
1235 S.W. 87 AVE  
MIAMI, FLORIDA 33174  
TEL. (305) 264-8100 FAX. (305) 262-6978

ACCORDION/13-04JI

'REGENCY' ALUMINUM ACCORDION SHUTTER

**JUPITER INDUSTRIES LLC**  
12311 CRYSTAL COMMERCE LOOP, UNIT #1  
FORT MYERS, FL. 33966  
TEL. (239) 225-9041 FAX. (239) 225-0923

revisions:

| no | date | by | description |
|----|------|----|-------------|
|    |      |    |             |

date: 10-03-13  
scale: 1/2" = 1"  
dr. by: HAMID  
chk. by:

drawing no.  
**13-04**

sheet 7 of 7