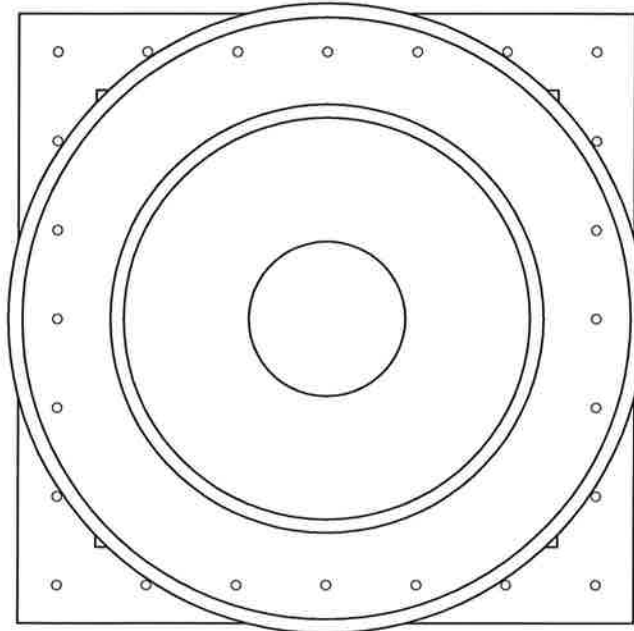


Large Missile Impact Resistant
 Max rated design pressure : +53.0 / -112.0 PSF



Plan View
General Notes:
 1. Product evaluated in accordance with requirements of 2006 International Building Code and ASCE 7-05.

2. Roof structure must be designed for weight of unit and wind load reactions transferred from the unit.

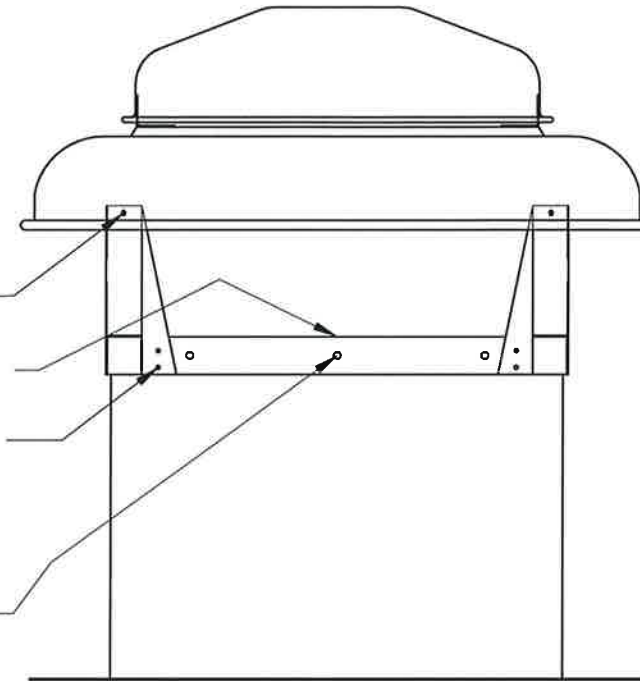
3. Product evaluated for the structural capacity of the exterior housing only. Interior mechanisms and/or electrical components have not been evaluated.

4. All fasteners must be corrosion resistant.

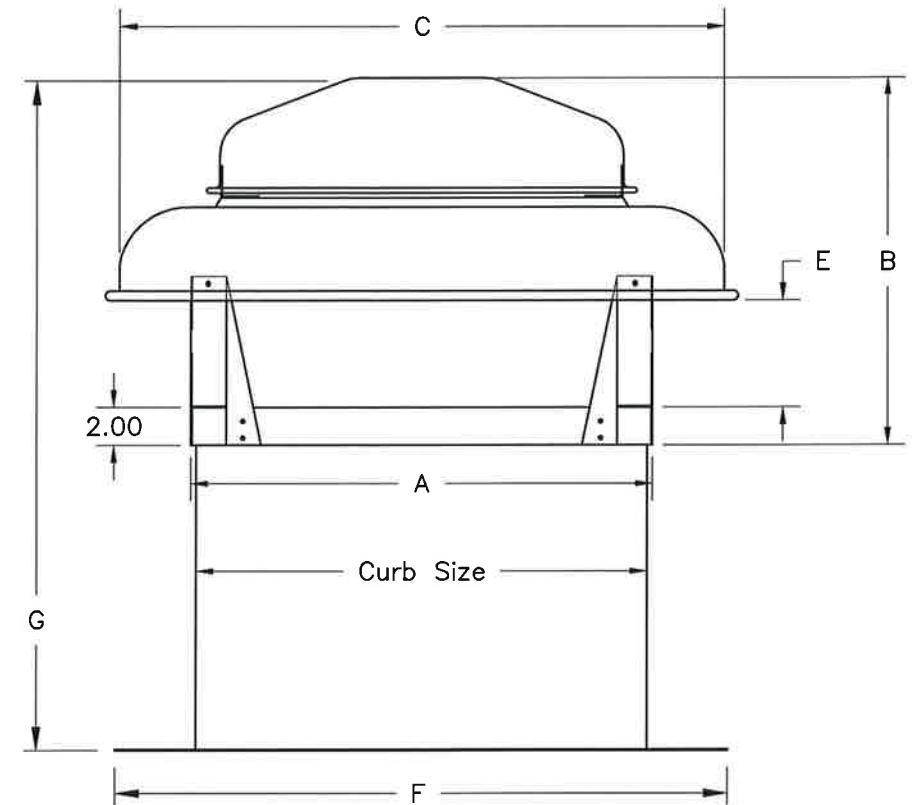
Joseph A. Reed, PE
 TX PE 100777
 Architectural Testing, Inc.
 TX Firm F-11869
 130 Derry Ct.
 York, PA 17404
 717-764-7700
 Project No.: E8434.03-122-34



- 4 x 1/4"-20x3/4" HWH bolts
- Windband to Curb Welded
2" welds on 6" centers
- 16 x 3/16" Aluminum Rivets
- Fan curb to Roof curb connection
1/4" sheet metal screws on minimum 6" centers



Elevation View



| Model | Fan Dimensions (Inches) | | | | | | | Curb Dimensions | | | Fan + Curb Weight (lbs.) |
|-------|-------------------------|-------|-------|------|------|-------|-------|-----------------|-------------|------------------|--------------------------|
| | A | B | C | D | E | F | G | Curb Size | Curb Height | Curb Material | |
| 60 | 13.50 | 9.00 | 18.25 | 2.00 | 0.00 | 21.50 | 49.00 | 13.20 | 8 to 42 | 18 ga. G90 galv. | 46 |
| 70 | 13.50 | 9.00 | 18.25 | 2.00 | 0.00 | 21.50 | 49.00 | 13.20 | 8 to 42 | 18 ga. G90 galv. | 46 |
| 80 | 13.50 | 9.00 | 18.25 | 2.00 | 0.00 | 21.50 | 49.00 | 13.20 | 8 to 42 | 18 ga. G90 galv. | 46 |
| 100 | 16.00 | 13.25 | 21.12 | 2.00 | 3.81 | 24.00 | 53.25 | 15.70 | 8 to 42 | 18 ga. G90 galv. | 51 |
| 110 | 16.00 | 13.25 | 21.12 | 2.00 | 3.81 | 24.00 | 53.25 | 15.70 | 8 to 42 | 18 ga. G90 galv. | 52 |
| 118 | 21.00 | 16.38 | 27.75 | 2.00 | 4.81 | 29.00 | 56.38 | 20.70 | 8 to 42 | 18 ga. G90 galv. | 75 |
| 126 | 21.00 | 16.38 | 27.75 | 2.00 | 4.81 | 29.00 | 56.38 | 20.70 | 8 to 42 | 18 ga. G90 galv. | 76 |
| 135 | 21.00 | 16.38 | 27.75 | 2.00 | 4.81 | 29.00 | 56.38 | 20.70 | 8 to 42 | 18 ga. G90 galv. | 82 |
| 145 | 21.00 | 16.38 | 27.75 | 2.00 | 4.81 | 29.00 | 56.38 | 20.70 | 8 to 42 | 18 ga. G90 galv. | 96 |
| 163 | 24.00 | 18.12 | 31.63 | 2.00 | 5.56 | 32.00 | 58.12 | 23.70 | 8 to 42 | 18 ga. G90 galv. | 139 |
| 171 | 24.00 | 18.12 | 31.63 | 2.00 | 5.56 | 32.00 | 58.12 | 23.70 | 8 to 42 | 18 ga. G90 galv. | 148 |

DWG NO. 686739 Sheet 1/3

TITLE Exhaust Ventilator Model PRN

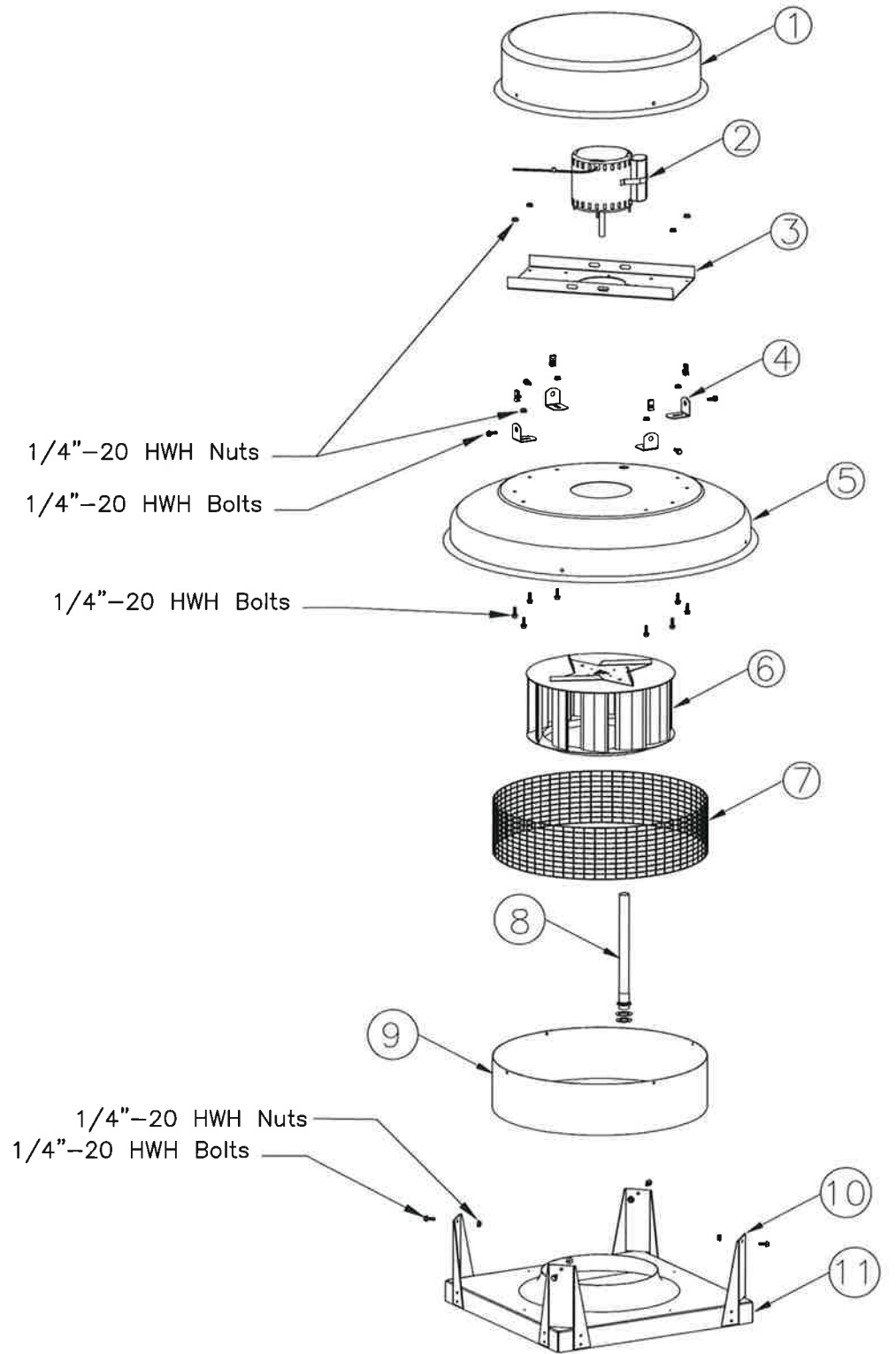
MAT'L
 DRAFTER TCR DATE 04/12/10
 DESIGN ENG. TCR 04/12/10 RELEASED
 CHKD BY MFG. SCALE NTS

| LET. | REVISION RECORD | BY | CKD. | DATE |
|------|--|-----|------|---------|
| A | REVISED FOR FLORIDA BUILDING CODE 2010 | BPF | TCR | 7/10/12 |
| B | REVISED FOR FLORIDA BUILDING CODE 2014 | TCR | TGB | 5/28/15 |
| C | REVISED FOR 42" TALL CURBS | TCR | TGB | 6/29/15 |
| D | WOOD SCREW PENETRATION AND CONCRETE STRENGTH | TCR | TGB | 3-6-17 |
| | | | | |
| | | | | |
| | | | | |

ACME Engineering & Manufacturing Corp
 1820 N. York St.
 Muskogee, OK 74403
 918-682-7791

| Item# | Qty. | Item | Size | 60-70-80 | 100 | 110 | 118 | 126 |
|-------|------|-------------------------|------|------------------|------------------|------------------|------------------|------------------|
| 1 | 1 | Motor Cover | | .050" aluminum | .050" aluminum | .050" aluminum | .050" aluminum | .050" aluminum |
| 2 | 1 | Motor | | | | | | |
| 3 | 1 | Motor Mount | | 18 ga. G90 galv. | 18 ga. G90 galv. | 18 ga. G90 galv. | 14 ga. G90 galv. | 14 ga. G90 galv. |
| 4 | 4 | Small Hood Bracket | | .080" aluminum | .080" aluminum | .080" aluminum | .080" aluminum | .080" aluminum |
| 5 | 1 | Hood | | .050" aluminum | .050" aluminum | .050" aluminum | .050" aluminum | .050" aluminum |
| 6 | 1 | Impeller | | | | | | |
| 7 | 1 | Birdscreen | | 19 ga. wire mesh | 19 ga. wire mesh | 19 ga. wire mesh | 19 ga. wire mesh | 19 ga. wire mesh |
| 8 | 1 | Wiring Post | | 1/2" EMT | 1/2" EMT | 1/2" EMT | 1/2" EMT | 1/2" EMT |
| 9 | 1 | Windband | | .080" aluminum | .080" aluminum | .080" aluminum | .080" aluminum | .080" aluminum |
| 10 | 4 | Hood Supports | | .080" aluminum | .080" aluminum | .080" aluminum | .080" aluminum | .080" aluminum |
| 11 | 1 | Curb & Orifice Assembly | | .050" aluminum | .050" aluminum | .050" aluminum | .050" aluminum | .050" aluminum |

| Item# | Qty. | Item | Size | 135 | 145 | 163 | 171 |
|-------|------|-------------------------|------|------------------|------------------|------------------|------------------|
| 1 | 1 | Motor Cover | | .050" aluminum | .050" aluminum | .050" aluminum | .050" aluminum |
| 2 | 1 | Motor | | | | | |
| 3 | 1 | Motor Mount | | 14 ga. G90 galv. | 14 ga. G90 galv. | 14 ga. G90 galv. | 14 ga. G90 galv. |
| 4 | 4 | Small Hood Bracket | | .080" aluminum | .080" aluminum | .080" aluminum | .080" aluminum |
| 5 | 1 | Hood | | .050" aluminum | .050" aluminum | .050" aluminum | .050" aluminum |
| 6 | 1 | Impeller | | | | | |
| 7 | 1 | Birdscreen | | 19 ga. wire mesh | 19 ga. wire mesh | 19 ga. wire mesh | 19 ga. wire mesh |
| 8 | 1 | Wiring Post | | 1/2" EMT | 1/2" EMT | 1/2" EMT | 1/2" EMT |
| 9 | 1 | Windband | | .080" aluminum | .080" aluminum | .080" aluminum | .080" aluminum |
| 10 | 4 | Hood Supports | | .080" aluminum | .080" aluminum | .080" aluminum | .080" aluminum |
| 11 | 1 | Curb & Orifice Assembly | | .050" aluminum | .050" aluminum | .050" aluminum | .050" aluminum |



Joseph A. Reed, PE
 TX PE 100777
 Architectural Testing, Inc.
 TX Firm F-11869
 130 Derry Ct.
 York, PA 17404
 717-764-7700
 Project No.: E8434.03-122-34

DWG NO. 686739 Sheet 2/3

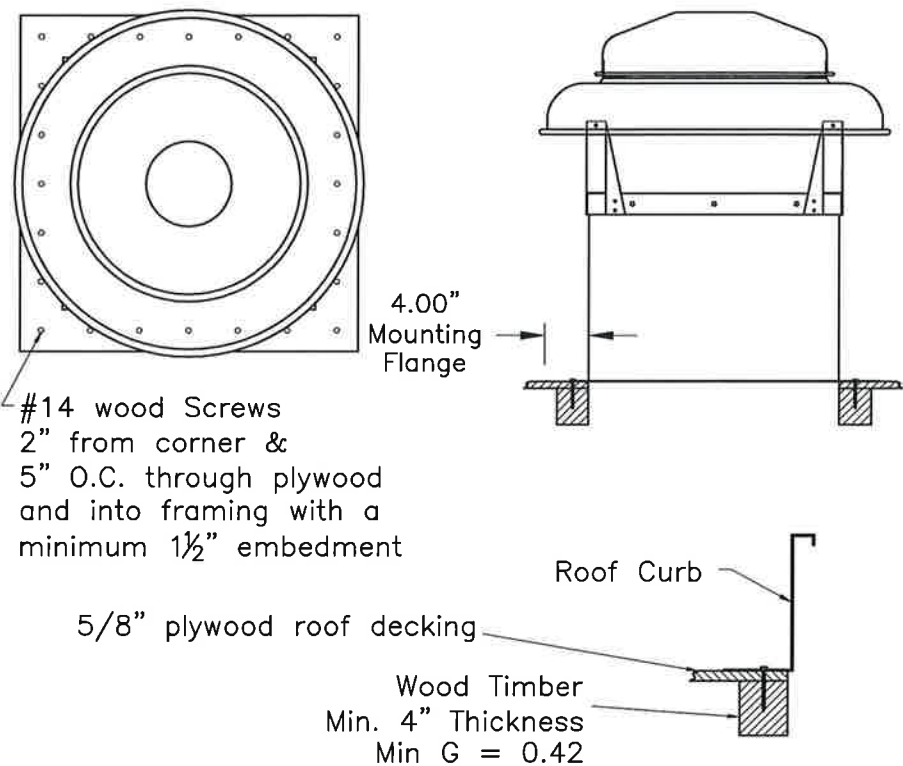
TITLE Exhaust Ventilator Model PRN

MAT'L
 DRAFTER TCR DATE 04/12/10
 DESIGN ENG. TCR 04/12/10 RELEASED
 CHKD BY MFG. SCALE NTS

| LET. | REVISION RECORD | BY | CKD. | DATE |
|------|--|-----|------|---------|
| A | REVISED FOR FLORIDA BUILDING CODE 2010 | BPF | TCR | 7/10/12 |
| B | REVISED FOR FLORIDA BUILDING CODE 2014 | TCR | TGB | 5/28/15 |
| C | REVISED FOR 42" TALL CURBS | TCR | TGB | 6/29/15 |
| D | WOOD SCREW PENETRATION AND CONCRETE STRENGTH | TCR | TGB | 3-6-17 |
| | | | | |
| | | | | |
| | | | | |

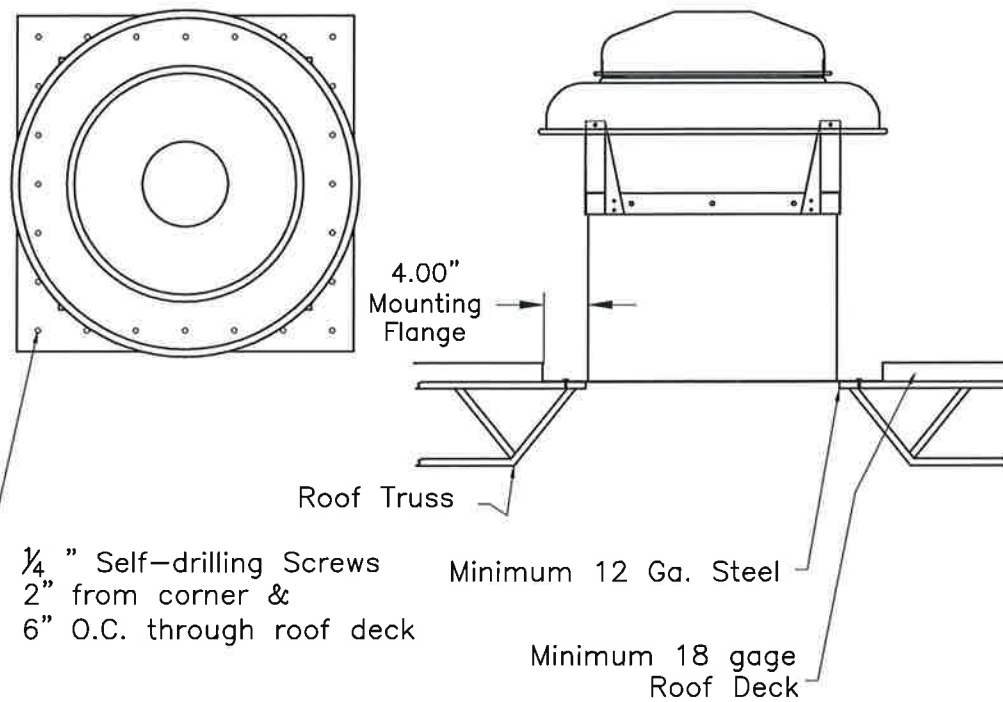
ACME Engineering & Manufacturing Corp
 1820 N. York St.
 Muskogee, OK 74403
 918-682-7791

Large Missile Impact Resistant
 Max rated design pressure : +53.0 / -112.0 PSF



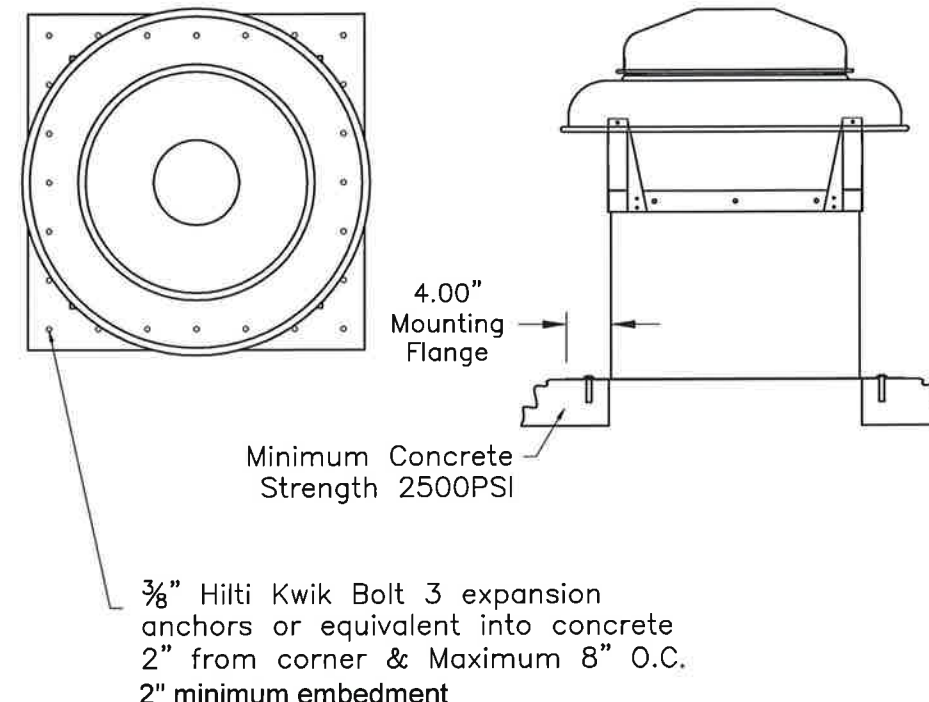
Plan View Elevation View

Wood Deck Installation



Plan View Elevation View

Metal Building Installation



Plan View Elevation View

Concrete Deck Installation



Joseph A. Reed, PE
 TX PE 100777
 Architectural Testing, Inc.
 TX Firm F-11869
 130 Derry Ct.
 York, PA 17404
 717-764-7700
 Project No.: E8434.03-122-34

| MODEL | MOUNTING FLANGE DIMENSIONS | INSTALLATION TYPE / FASTENER COUNT | | |
|-------|----------------------------|------------------------------------|----------------|---------------|
| | | WOOD DECK | METAL BUILDING | CONCRETE DECK |
| 60 | 21.50 X 21.50 | 16 | 16 | 12 |
| 70 | 21.50 X 21.50 | 16 | 16 | 12 |
| 80 | 21.50 X 21.50 | 16 | 16 | 12 |
| 100 | 24.00 X 24.00 | 16 | 16 | 12 |
| 110 | 24.00 X 24.00 | 16 | 16 | 12 |
| 118 | 29.00 X 29.00 | 20 | 20 | 12 |
| 126 | 29.00 X 29.00 | 20 | 20 | 12 |
| 135 | 29.00 X 29.00 | 20 | 20 | 12 |
| 145 | 29.00 X 29.00 | 20 | 20 | 12 |
| 163 | 32.00 X 32.00 | 24 | 24 | 16 |
| 171 | 32.00 X 32.00 | 24 | 24 | 16 |

DWG NO. 686739 Sheet 3/3

TITLE Exhaust Ventilator Model PRN

MAT'L
 DRAFTER TCR DATE 04/12/10
 DESIGN ENG. TCR 04/12/10 RELEASED
 CHKD BY MFG. SCALE NTS

| LET. | REVISION RECORD | BY | CKD. | DATE |
|------|--|-----|------|---------|
| A | REVISED FOR FLORIDA BUILDING CODE 2010 | BPF | TCR | 7/10/12 |
| B | REVISED FOR FLORIDA BUILDING CODE 2014 | TCR | TGB | 5/28/15 |
| C | REVISED FOR 42" TALL CURBS | TCR | TGB | 6/29/15 |
| D | WOOD SCREW PENETRATION AND CONCRETE STRENGTH | TCR | TGB | 3-6-17 |
| | | | | |
| | | | | |
| | | | | |

ACME Engineering & Manufacturing Corp
 1820 N. York St.
 Muskogee, OK 74403
 918-682-7791